

Emergency Plan of Action (EPoA)

Italy, Sardinia: Wildfires

DREF Operation n°	MDRIT003	Glide n°:	WF-2021-000103-ITA
Date of issue:	10 August 2021	Expected timeframe:	4 months
		Expected end date:	31 December 2021
Category allocated to the disaster: Yellow			
DREF allocated: CHF 208,280			
Total number of people affected:	11,600	Number of people to be assisted:	600 (200 families) to be supported through this DREF operation (1,500 people supported by the whole NS response)
Provinces affected:	1 Region, 5 Provinces	Provinces/Regions targeted:	1 Region, 5 Provinces
Host National Society presence: <ul style="list-style-type: none"> - Sardinia Regional Branch with 4 Staff, 6 Local Branches, 31 Stations for a total of 1,760 Volunteers - National Rapid Response Unit, with 6 Staff 			
Red Cross Red Crescent Movement partners actively involved in the operation: IFRC			
Other partner organizations actively involved in the operation: The EU Civil Protection Mechanism (UCPM), The Italian Civil Protection Department, National Fire and Rescue Corps, The Regional Emergency Agency			

A. Situation analysis

Description of the disaster

On Sunday 25 July, the President of the Autonomous Region of Sardinia Island, (with its Resolution of 25 July 2021, officially declared the State of Emergency, due to several forest and wild-to-urban interface fires, spread across 5 of the 7 Provinces of the Region.

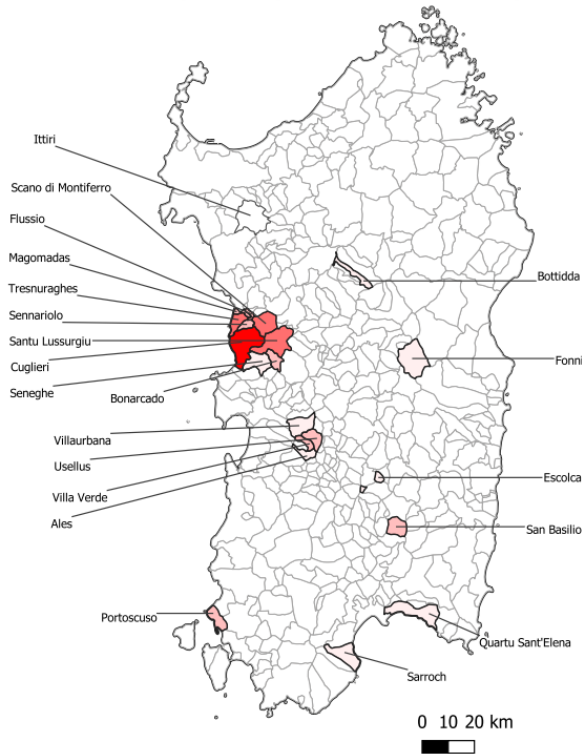
At present, both the containment operation and the damage assessment are still in progress, roughly 20,000 ha of scrub, firm and cultivated land and wood are affected by fire and there are about 1,500 displaced people, and 578 farms involved (and about 100 farms heavily involved). (data coming from initial assessment, rapid assessment is ongoing, in coordination with regional and local authorities).



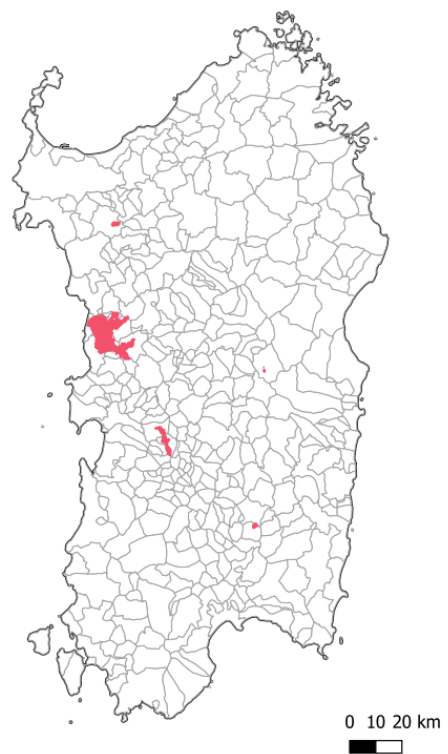
Photo 1. Wildfire in Montiferru. Source: [fanpage.it](https://www.fanpage.it)

Unfortunately, the actual (data from Copernicus and ECMWF) forecast for the next 7 days is not reassuring; a sack of hot air from Africa will cause high temperatures (between 19°C to 35°C) and sustained ventilation from the southern quadrant of the island. Other Regions in Italy are also suffering forest fires (e.g. Sicily and Abruzzo).

Affected municipalities (VIIRS n° forest fires)



Burnt areas (MODIS)

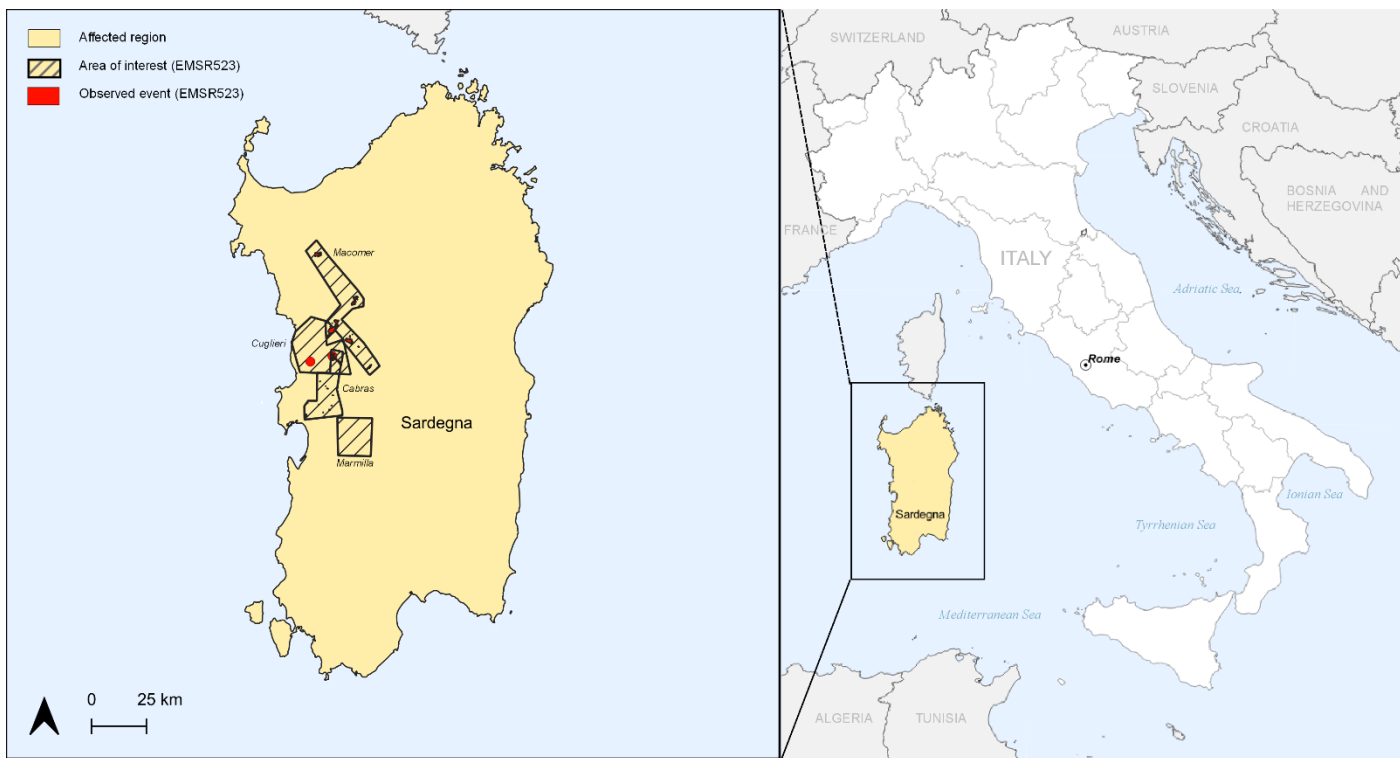


Forest and interface fire was probably originated in the late afternoon of 23 July 2021 from a car (probably broken down), temporarily abandoned along the SP15 in the municipality of Bonarcado (Oristano province). Initially tamed (after having destroyed 20 ha of scrubland) by the intervention of the aerial firefighting aircrafts of Sardinia Region, the fire spread further for over than 50 km in the area of Montiferru (Oristano province), due to the strong hot wind of Scirocco and high temperatures.

The following day the situation rapidly degenerated: two new outbreaks in the area of Escovedu-Mogorella, and Usellus, which reached Villaurbana, were immediately tamed. These two new outbreaks were probably malicious in nature (investigations are underway conducted by the regional investigative unit of the Forestry Corps). In particular, Usellus outbreak damaged numerous farms and forestry sites, at the same time causing very serious damage to the forest ecosystem.

Containment operations - which included the joint intervention of firefighters, foresters, volunteers, eight rotary-wing and five fixed-wing aircraft - had to extinguish several outbreaks during the following days, requiring an enormous effort that included the international assistance and the deployment of Firefighting Aerial Assets (Canadair) from France and Greece (in the framework of the Unional Civil Protection Mechanism).

In the following days the situation has not improved, numerous outbreaks continued further affecting local communities.



Croce Rossa Italiana

**Italy, Wildfires
Disaster Relief Emergency Fund**

MDRIT003
WF-2021-000103-ITA
2021/08/03
Map data source: ICRC, Copernicus (EMSR523)
DCC | IM | BUD



The maps used do not imply the expression of any opinion on the part of the International Federation of Red Cross and Red Crescent Societies or National Societies concerning the legal status of a territory or of its authorities.

Summary of the current response

Overview of Host National Society Response Action

The Italian Red Cross has been responding to the wildfires in Sardinia since the beginning of the emergency, mobilising their local, regional and national resources, with about 250 Volunteers and Staff, 16 long trucks, 3 minivans, 10 vans, 1 tanker (water), 6 ambulances involved and providing the following services,

- support some 1500 evacuees (evacuating people – particularly older people, dependents, using vehicles and teams -, distributing relief aids, establishing and managing staging areas),
- establishing emergency warehouses in Cuglieri,
- providing support to the fire brigades (through emergency medical services and logistics support, and water-tank truck),
- transferring and distributing fodder for the cattle (the RC National response capacity is active, logistically supporting delivery from mainland to Sardinia, through its Emergency Response Centre network), more than 170,000 tons of fodder delivered.

The Head of Emergency and Rescue Operations of ItRC is part of the inter-agency coordinating body established at National and Regional branch level, with the Regional Branch being in close coordination with the regional and Local Authorities. Both national and regional operations are overseen by ItRC National Emergency Operation Centre in close contact with the Civil Protection Department.

Overview of non-RCRC actors in country



Photo 2. Firefighting aircraft (Canadair CL415) dropping water on wildfires in Abbasanta. Source: Sardinia Regional Government

Italian and Regional Civil Protection Department

More than 7,500 volunteers and staff, 5 aerial forest firefighting planes (Canadair), 14 firefighting helicopters had been deployed in the area to counter the spreading of the wildfire. The National Fire and Rescue Corps deployed 66 men and 27 vehicles, to support wildfire fighting and try to avoid or minimise urban interface fire.

The Regional Civil Protection Agency declared the state of emergency, granting additional authority and capacities to both the regional coordination and the local coordination.

Union Civil Protection Mechanism

In response to Italy's request for assistance through the EU Civil Protection Mechanism, the EU mobilised support from France and Greece. The two countries deployed two aerial forest firefighting planes (Canadair) each. The planes offered by France come from the European Civil Protection Pool, whereas the ones offered by Greece are part of the rescEU assets.

Needs analysis, targeting, scenario planning and risk assessment

Needs analysis

The Initial Assessment is providing key figures in term of total numbers of people in needs (1,500 of 11,600 people affected), properties lost (220 houses), economic losses (100 farms destroyed or several damaged of about 578 farms involved, 20,000 ha of terrain burnt).

The rapid assessment and sectoral in-depth assessment are ongoing, in a joint and coordinated way with the local emergency management authorities, and in coordination with fire containment operations. As soon as the assessment will be completed, which is planned by 15 August 2021 - a more precise picture will be shared.

The main issues are related to the lost or severely damaged livelihoods. The economics in the area mainly depends on agriculture and farming. Many agricultural businesses and private properties have been damaged by the fires. Many survivors lost their means of earning with the field of crops and fodder burnt, farms and cattle burnt or smoked. Most of the farms are house farms.

In addition, the COVID-19 pandemic has increased the burden on the communities under the impact of the economic crisis (reduced touristic capacities, difficulties in commerce...). All of the above has dramatically affected society's capacity to cope with the crisis, knowing that these communities are living in an emergency since March 2020.

Targeting

The response operation is under the umbrella and the overall coordination of the Civil Protection Authorities, both at National and Regional Level. The Italian Civil Protection Department is coordinating all the national and international actions, where regional authorities and Local authorities identified resources and area of intervention.

The Italian Red Cross is responding as operational structure of the Civil Protection System and based on the initial assessment the operation will focus on all the 15 municipalities hit by the fires (with major focus on the Oristano Province – the most affected area -). The operation addresses the needs of about 100 farms, farmers and workers and 200-220 households in the area. Target groups will be properly identified during in-depth sectoral assessment, with the following set of criteria, in order to prioritise access to the most vulnerable.



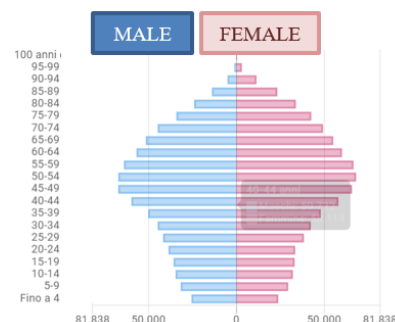
The targeting action is aimed to support farmers and farmhouses (houses linked to the farm with stockyards attached), of the rural area, in all the towns affected by the disaster. It has been decided to support this particular target group due to the fact they are the most affected people in the area. Farmers and workers are those suffering the most from the disaster having both houses and livelihoods affected by the event (evacuated tourists are not in need of mid to long term support and immediate evacuation had been granted, other people affected did not suffered damages to their livelihoods). The farmhouses are a basic element of the rural economics of Sardinia, where small companies are composed by the farmers and their families. Aiming the rural communities we support both classic shelter assistance (housing) and economic recovery and livelihoods, supporting those households that cannot just be evacuated to hotels, due to the fact they cannot leave their working place.

Families	Farms
<ul style="list-style-type: none"> - Families that are directly affected by the wildfires. - Families with lost or severely damaged livelihoods - Poor economic status of the household. - Families that are identified for assistance by the detailed assessments. - Families who are not included in similar programs 	<ul style="list-style-type: none"> - Farmers whose livelihoods have been destroyed - Farmers and families whose livelihoods have been affected. - Farmers with farmhouses damaged or destroyed (dependant on the degree of damage suffered). - Economic status of the household. - People identified by the detailed assessments. - Farmers who are not included in similar programs

Estimated disaggregated data for population targeted.

Sardinia Region distribution for age and sex is the following (data coming from ISTAT, the National Italian Statistic Institute and based on the last Census), the most of the people in need are adult or older people.

The data initially acquired are focussing on having an overall picture, so the population affected is mainly in its working age (or in its late working age).



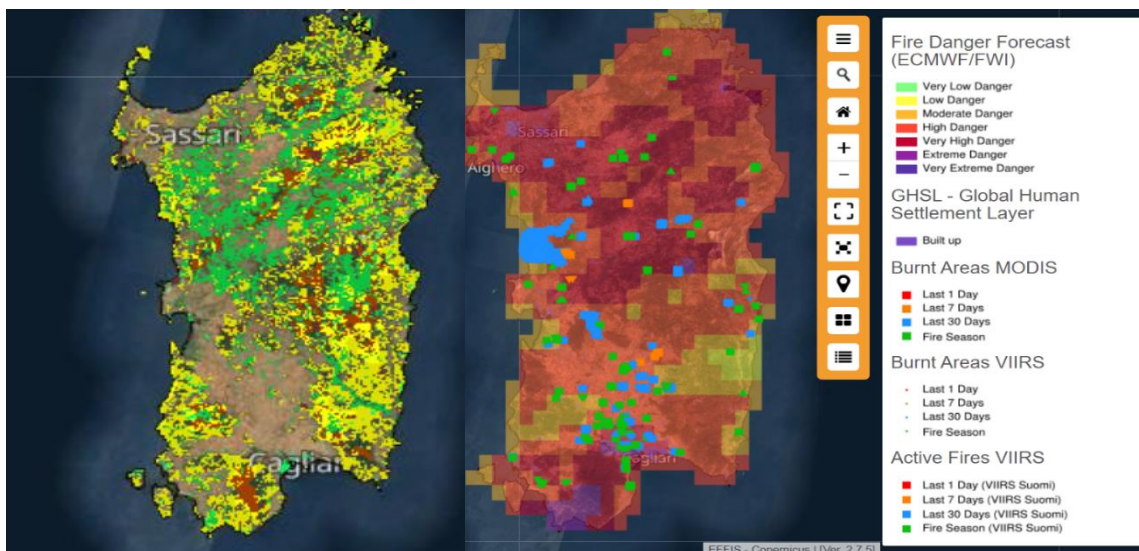
Scenario planning

Scenario	Humanitarian consequence	Potential Response
Fire suppression and access to the whole area (more likely)	People can gradually recover their houses and restart their livelihoods	Shelter and livelihood support
Wildfire outbreaks continue, but are properly contained	People can gradually recover their houses and restart their livelihoods, where wildfires are not menacing their lives	Shelter and livelihood support where possible, management of staging areas and camps, support to fire brigades
New wildfire outbreaks uncontained	People cannot recover, further destruction in the area	Shelter and livelihood support where possible, management of staging areas and camps, support to fire brigades
COVID-19 variant Delta will increase multi-hazard needs	Contagion will spread again adding a new level of complexity having the need to counter COVID-19 situations in staging areas.	Deployment of additional field medical emergency structures, with biocontainment capacities, in support to the Regional Health Services. 2 Field Medical COVID-19 Clinics are stored in Rome and 1 additional in Avezzano Warehouse for rapid deployment

Operation Risk Assessment

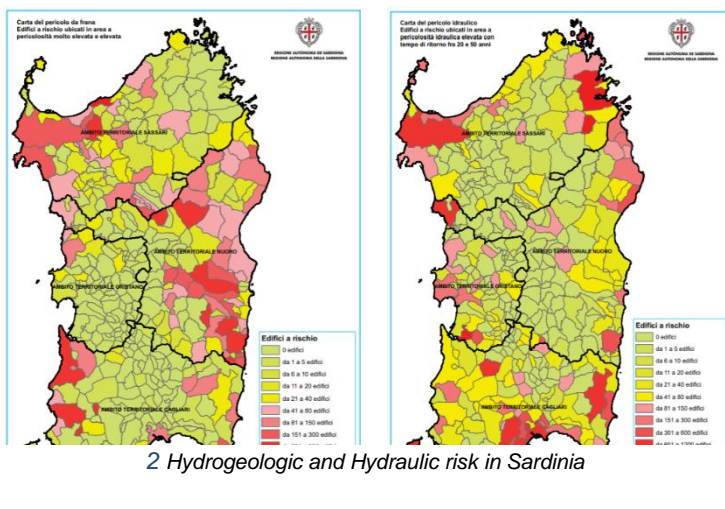
The evolution of the fire-season with additional outbreaks in the area resulting in the need to enlarge the operation and to protect the already damaged properties.

The picture below shows the fuel distribution in the Region, compared with the burnt areas and the forecasted warning for future events



1 Source: EFFIS European Forest Fire Information System - Copernicus

Mid-term risk assessment involves, other than forest fires:



2 Hydrogeologic and Hydraulic risk in Sardinia

- potential negative evolution of COVID-19 situation, with consequential need to increase distances and ensure isolation of the affected people is likely, considering the trend in the region. This element can both affect the operation, but more widely the whole regional capacities, requiring a quick re-routing of ItRC assets and potential deployment of additional resources from the mainland.

- potential impact of floods and hydro-geological events due to heavy rains, from September to November 2021.

National Society responses to COVID-19 are supported through the [IFRC global appeal](#), which will facilitate supporting them to maintain critical service provision, while adapting to COVID-19. This DREF operation is aligned with and will contribute to the current global strategy and regional Emergency Plan of Action for COVID-19 developed by the IFRC Regional Office for Europe, in coordination with global and regional partners. IFRC continues to assess how emergency operations in response to disasters and crisis should adapt to this crisis and provide necessary guidance to its membership on the same. The NS will keep monitoring the situation closely, focusing on the health risks, and revise accordingly if needed taking into consideration the evolving COVID-19 situation and the operational risks that might develop, including operational challenges related to access to the affected population, availability of relief items and procurement issues, and movement of NS volunteers and staff as well as international staff. For more information, please consult [the COVID-19 operation page on the IFRC GO platform](#).

B. Operational strategy

Overall Operational objective:

The overall objective of this operation is to contribute to the provision of humanitarian assistance to about 100 farms, total of 200 families/ 600 people (average of 3 people per family), mainly owners and workers in the affected farms and living in the farmhouses), considering both those supported by shelter and/or by livelihoods activities, according to the specific needs. The operation aims to reach the people in need of livelihoods and shelter support, mainly through Voucher Assistance and initial emergency in-kind distribution of fodder (to support cattle).

The operation is structured in the following phases:

Phase	Description	Timing (months)
1. Assessment	Rapid and detailed assessment focussing on damage analysis and targeting of the beneficiaries. CEA to better shape aid provided Data disaggregated (SADD) and analyse accordingly.	August
2. In-kind distribution and procurement	Addressing immediate needs through provisioning for lost sources of income to meet basic needs (distribution of essential cattle items and fodder) Tendering and Contracting financial service provider for the voucher programme	August - September
3. Voucher distribution	Distribution of the vouchers ¹ to the targeted population, through local Red Cross capacities (Branches and Stations), under national coordination (including the use of centralised data systems like the database developed for the COVID-19 EA, national GIS and data collection platforms...)	October - November
4. Evaluation of the effects	Continuous assessment operation and M&E action to evaluate the effects of the operation Through the ItRC call centre (800065510) a 24/7 capacity to receive feedbacks from the counterpart will be active	November
5. Exit strategy	Transfer to the local and regional authorities for the mid to long-term support and rehabilitation	November

Cost of the Life in Sardinia and other specific costs.

Decisions based on vouchers are also considering the cost of the life in Sardinia, as benchmark for defining the base of the operation, here below a quick reference table, sources are the National Institute for Statistics or primary data collection.

The value of the vouchers has been estimated taking all these indicative costs in mind and considering an average gross monthly income of about 2,000 EUR/ household (the action is providing to 1 household about 600 EUR in 4 months, plus the in-kind support, therefore the support provided through the DREF covers around the 10% of their regular income.

Item	Cost
Rent an apartment (1 bedroom) for 1 month	400 to 600 EUR
House in Sardinia (1 bedroom) – rural house	40,000 EUR avg. cost of 1,500 EUR sqm
1l of milk	1.06 EUR
500g of bread	1.79 EUR
1kg of local cheese	12.88 EUR
1kg of meet (beef)	14.13 EUR
Avg. cost for technical services (plumber/electrician)	50 EUR per working hour
Costs of construction material and services	There is a specific document issued by the region defining referral costs
Avg. gross salary p.a.	17,270 EUR
Health expenses p.a. per capita	1,885 EUR
Avg. cost Fodder bale (400kg)	35 EUR
Avg fodder consumption (sheep – Sardinian species)	615 kg per year 51 kg per month 1.7 kg per day

¹ It has been chosen to organise a vouchers distribution due to accountability and legal needs. The Italian Red Cross is experienced in vouchers-based action (also considering the recent COVID-19 EA). Distribution of cash has blockages at legal and procedural level.

Other Sectors

Health services and emergency medical services, as well as technical rescue are not considered in this DREF. Those services, including MPHSS, medical visits or rescue services are under the Regional Government authority and budget, and organised by the ItRC under specific contract with the Regional Health Services.

Human Resources

The ItRC has deployed its volunteers in different branches since the beginning of the response operations. As the rapid needs assessment has been done identifying the imminent needs and interventions a mobilisation plan will be prepared, in case of need to support regional capacities. Support to the assessment could be provided remotely if not physical deployment is needed, reducing logistics costs.

Logistics and supply chain

Logistics will mainly support in-kind distribution and it should consider transfer of trucks and fodder from the peninsula to the island.

Notes: the in-kind distribution of fodder from the mainland is needed due to the extensive damage to local grass fields and crops. The operation aims to reduce logistics costs and localise the action as much as possible, but the availability of the goods is a fundamental and necessary milestone.

Communications (Press)

Information on the operation will be disseminated by the ItRC through web and social media, and in coordination with the Civil Protection authorities in order to highlight the response to the humanitarian needs and the evolving and emerging humanitarian concerns. Information will also be shared via the IFRC Go Platform.

Community Engagement and Accountability (CEA)

CEA is integrated throughout the intervention to ensure maximum and meaningful participation of affected communities. The ItRC can count on its nation-wide network of 670 local branches and more than 1,400 stations to support CEA in every action. A national free-toll telephone number (800065510) is 24/7 accessible and will be also used as a feedback mechanism. Local assessment teams will ensure accountability of the operation by addressing potential complaints/feedback from the target households and non-target communities.

Safety and Security

All ItRC Volunteers and staff are properly trained, equipped and insured. Health and safety procedures are in place according to the Italian Law (L.81/2008) and specific COVID-19 Standard Operating Procedures (SOPs) have been issued in February 2020 (and regularly updated according to the Ministry of Health guidance), to reduce probability of contagion during response operations.

No specific security issues are considered, CEA is fundamental to reduce potential incidents (mainly verbal assaults can be expected) with the affected population.

Emergency Medical Service, Fire and Rescue services, police are all responding services available and well operational in the area.

Planning, Monitoring, Evaluation and Reporting (PMER)

ItRC will be monitoring the intervention to ensure a detailed feedback on activities identified, according to the indicator defined.

The monitoring and evaluation process will be as a following:

- Baseline survey whenever possible
- Post-distribution monitoring questionnaire
- Hotline: Provide contact details of the relevant program head where affected persons can ask for support.
- End line to measures changes in project impact and outcome indicators over the life of the project, in order to assess the extent to which project objectives have been achieved and determine how the intervention contributed to achieving the project goal
- Lesson learning exercise to gather operational learning and improve future response efforts

Administration and Finance

ItRC will be responsible for managing the funds in accordance with standards practices for IFRC on operational transfers.

A dedicated team will follow both Admin & Finance and PMER actions.

C. Detailed Operational Plan



Shelter

People targeted: 200 families, about 600 people

Requirements (CHF): 74,427

Needs analysis: *Considering that most of the people living in the area is living and working in agriculture and farm industries, particularly in farmhouses, it has been initially assessed to have compounding needs for both shelter and livelihoods. Initial assessment confirmed damages to properties, both houses and farm (including farmhouses), in the whole affected areas, for about 220 damaged buildings (in about 100 farms and involving about 200 families). Support is needed to ensure possibility for the evacuees to support (through temporary measures, envisaging proper reconstruction) quick recovery of their houses and proper business continuity in order to minimise the impact of the event.*

The strategy is to address local needs providing basic means for repairing the farmhouses, as an emergency measure to be complemented with a mid to long term support from the regional government and governmental rehabilitation actions. Through this DREF, the supported population will have the possibility to meet their immediate needs, by using the **vouchers to support purchases of construction material and/or professional services for providing emergency fixing or repair of their farmhouses**.

Risk analysis:

Immediate: evolution of the fire-season with additional outbreaks in the area resulting in the need to enlarge the operation and to protect the already damaged properties

Mid-term: potential negative evolution of COVID-19 situation, with consequential need to increase distances and ensure isolation of the affected people is likely, considering the trend in the region. Potential impact of floods and hydro-geological events due to heavy rains, in September – November 2021. Delays in receiving long-term financial or technical support by the regional services

Population to be assisted: *The strategy adopted is to use voucher action, with vouchers restricted² to buy construction material or building/technical services (e.g. plumber, electrician...) to ensure both possibility for the targeted people to receive a more effective aid (according to the specific need). Vouchers will be distributed will have a nominal value around 100 EUR each ³(about 108 CHF, it is envisaged a fluctuation of about 6,5%) and distributed according to the damage suffered and the criteria exposed below. In a one-shot voucher distribution action, each family will receive a number of vouchers defined according to the damage suffered and their recovery capacity. The value of the voucher will consider the average cost of life (that, according to the Italian Statistic Institute, is adapted to the cost for purchasing goods in-country) and costs of goods and services and ItRC will ensure harmonisation and coordination with the Local and Regional Authorities.*

² The restrictions for the use of the vouchers are defined during the tendering process, as per the action organised for the COVID-19 EA. Specific monitoring of the distribution of the voucher will be done through ItRC National databases and mobile data collection tools.

³ The amount of a single voucher had been calculated in order to provide enough flexibility to both the beneficiary, in selecting how to distribute different purchases and the ItRC to have flexibility in adapting the aid provided to each beneficiary considering specific needs

The vouchers will be distributed once-off through the Local Branches and in coordination with the respective town-hall Emergency Operation Centres, considering the following criteria:

- Families directly affected by the wildfires, with farmhouses damaged (dependant on the degree of damage suffered).
- Families whose livelihoods have been affected.
- Economic status of the household.
- Families identified by the detailed assessments.
- Families who are not included in similar programs

Programme standards/benchmarks: ItRC will ensure alignment and coordination with the Regional and Local Authorities (Mayor), national laws in terms of civil protection and aid (including economic aid) will be respected. Reference and adherence to SPHERE⁴ standard will be granted, when National references are not available, and adapted considering the average cost-of-life.

P&B Output Code	Shelter Outcome 1: Communities in disaster and crisis affected areas restore and strengthen their safety, well-being and longer-term recovery through shelter and settlement solutions	% of families that report that the vouchers received was sufficient to cover temporary and emergency shelter needs (Target: 80%)															
	Shelter Output 1.1: Shelter and settlements and basic household items assistance is provided to the affected families.	# of families that received vouchers for shelter needs (Target: 200)															
	Activities planned Week	1	2	3	4	5	6	7	8	9	10	11	12	13	14	15	16
AP005	Assessment of shelter needs, capacities and gaps																
AP005	Identification of caseloads and verification of affected people in different target groups – inclusion factors integrate gender, diversity and disability in the response																
AP005	Coordination with other relevant sectors for integrated programming																
AP005	Coordination with government and other stakeholders																
AP005	Analysis of the local market to identify availability/access to shelter and household items (can be two separate activities)																
AP005	Design and implementation of the shelter assistance (through the provision of Voucher Assistance and technical support when needed) to meet shelter needs to the affected population																
AP005	Monitoring and Evaluation of the shelter support provided																

⁴ If and where there are no specific laws nor regulation or regulatory principles, SPHERE standards are considered an authoritative source to have minimum standards that can be adapted to consuetudinary elements, average cost-of-life, cost of the goods... Of course, local, regional and national regulations are providing the main guidance (e.g. some repair works have to be certified by professionals, like electric wirings, or ceilings), where other may be self-made.



Livelihoods and basic needs

People targeted: 100 farms / 200 families about 600 people

Requirements (CHF): 104,197

Needs analysis: *Through the Initial Assessment about 100 farms have been identified as damaged or heavily damaged, with consequential losses and heavy losses of cattles and fodder. The wildfire also destroyed field, grass and crops, leaving the farmers without means of earning or with no possibility to feed their cattle. This situation, linked with the destruction of the farms is a direct and immediate need caused from the impact of the wildfire, as both direct (destruction) and indirect (economic damages due to losses of heads of cattle or crops).*

Disaster has severely affected the livelihoods and income generating capabilities of the victims. Distribution of essential items and vouchers will allow achieving DREF operational objectives

Risk analysis:

immediate: evolution of the fire-season with additional outbreaks in the area resulting in the need to enlarge the operation and to protect the already damaged properties

mid-term: potential negative evolution of COVID-19 situation, with consequential need to increase distances and ensure isolation of the affected people is likely, considering the trend in the region. Potential impact of floods and hydro-geological events due to heavy rains, in September – November. Delays in receiving long term financial or technical support by the regional services

Population to be assisted: *The targeted people will receive emergency in-kind support and a one-shot voucher action. The strategy adopted is to use 1 voucher action, with vouchers restricted⁵ to buy specific fodder according to the farm needs (dependant on the type of cattle...) to ensure both possibilities for the targeted people to receive a more effective aid to protect their livelihoods (according to the specific need). Vouchers will be distributed will have a nominal value around 100 EUR each ⁶(about 108 CHF, it is envisaged a fluctuation of about 6,5%) and distributed according to the damage suffered and the criteria exposed below. The value will consider the average cost of life and the Italian Red Cross will ensure harmonisation and coordination with the Local and Regional Authorities.*

The vouchers will be distributed once off through the Local Branches and in coordination with the respective town hall Emergency Operation Centres, considering the following criteria:

- People in need (farmers and families) that are directly affected by the wildfires, losing assets and/or cattle, as owner of the farms
- People in need (farmers and families) with lost or severely damaged livelihoods, also indirectly affected by the disaster (e.g. workers of a damaged farm)
- Poor economic status of the household.
- People in need (farmers and families) that are identified for assistance by the detailed assessments.
- People in need (farmers and families) who are not included in similar programs

⁵ The restrictions for the use of the vouchers are defined during the tendering process, as per the action organised for the COVID-19 EA. Specific monitoring of the distribution of the voucher will be done through ItRC National databases and mobile data collection tools.

⁶ The amount of a single voucher had been calculated in order to provide enough flexibility to both the beneficiary, in selecting how to distribute different purchases and the ItRC to have flexibility in adapting the aid provided to each beneficiary considering specific needs

Programme standards/benchmarks: ItRC will ensure alignment and coordination with the Regional and Local Authorities (Mayor), national laws in terms of civil protection and aid (including economic aid) will be respected.
Reference and adherence to SPHERE standard will be granted, when National references are not available, and adapted considering the average cost-of-life and the impact provided, in terms of livelihoods recovery.

P&B Output Code	Livelihoods and basic needs Outcome 1: Communities, especially in disaster and crisis affected areas, restore and strengthen their livelihoods	<i>% of farms that report that the vouchers received for farming assets were sufficient to provide an emergency and temporary support (Target: 80%)</i>															
P&B Output Code	Livelihoods and basic needs Output 1.1: Household livelihoods security is enhanced through food production, increased productivity and post-harvest management (agriculture-based livelihoods)	<i># of families provided with fodder supply (Target: 100 farms/200 families) # of trainings conducted (Target: 15) # of people participating on trainings (target: 200 people - 1 per farm)</i>															
	Activities planned Week	1	2	3	4	5	6	7	8	9	10	11	12	13	14	15	16
AP009	Availing farming inputs (seeds, tools...) through voucher																
AP009	Restocking of fodder supply in-kind (immediate in-kind operation to provide fodder bales to the farmers)																
AP010	Training on good practices for supporting the protection of the livelihoods in case of forest fire.																

Strategies for Implementation

Requirements (CHF): 29,656

P&B Output Code	S1.1: National Society capacity building and organizational development objectives are facilitated to ensure that National Societies have the necessary legal, ethical and financial foundations, systems and structures, competences and capacities to plan and perform	<i># of Volunteers deployed in the operation (Target: 100)</i>															
P&B Output Code	Output S1.1.4: National Societies have effective and motivated volunteers who are protected⁷																
	Activities planned Week	1	2	3	4	5	6	7	8	9	10	11	12	13	14	15	16
AP040	Provide complete briefings on volunteers' roles and the risks they face																

⁷ Consider that all the ItRC Volunteers are insured, trained for Health & Safety issues (according to National Health&Safety Law 81/2008), trained for the specific activities, properly equipped. This voice is considering only specific actions for briefing, debriefing, instructions related to this operation.

AP040	Provide psychosocial support to volunteers (in case of need) ⁸																	
AP040	Ensure volunteers are aware of their rights and responsibilities																	
P&B Output Code	Output S2.1.3: NS compliance with Principles and Rules for Humanitarian Assistance is improved	# monthly reports submitted (Target: 4) # of local key informants consulted (Target: 20) # of communication products disseminated (Target: 4)																
	Activities planned Week	1	2	3	4	5	6	7	8	9	10	11	12	13	14	15	16	
AP049	Ensure that the Principles and Rules, Emergency Response Framework and Emergency Appeal and DREF procedures are well understood and applied																	
AP053	Communication work																	
AP084	Methods are put in place to ensure communities can participate in the response and influence decision-making																	
AP084	Community communication activities ensure people are kept informed of operational plans and progress and have they information they need about the response																	
AP084	Community feedback systems (including rumour and/or perception tracking) are established, and feedback acted upon and used to improve the operation																	
AP084	Exit strategy developed that includes community consultation and sharing of the final evaluation results with the community																	
P&B Output Code	Output S2.1.4: Supply chain and fleet services meet recognized quality and accountability standards	# of vehicles used in the operation (Target: 10) # of tons of goods received (Target: 100)																
	Activities planned Week	1	2	3	4	5	6	7	8	9	10	11	12	13	14	15	16	
AP050	Warehousing, goods reception, forwarding, fleet, fuel costs																	
P&B Output Code	Output S2.2.5: Shared services in areas such as IT, logistics and information management are provided	# of vehicles/travel (Target: 10) # of IM / remote support teams "deployed" (Target: 1 team) # of IM products prepared (Target:5)																
	Activities planned Week	1	2	3	4	5	6	7	8	9	10	11	12	13	14	15	16	
AP052	National Logistics and Information Management capacities are provided to support assessment and operations																	
P&B Output Code	Output S3.1.2: IFRC produces high-quality research and evaluation that informs advocacy, resource mobilization and programming.	# of Assessment reports produced (Target: 1) # of Market assessment reports produced (Target: 2)																
	Activities planned Week	1	2	3	4	5	6	7	8	9	10	11	12	13	14	15	16	

⁸ This activity is only for internal support, MHPSS operations for the general public are managed by the Health Services

D. Budget

The total budget for this DREF operation is **CHF 208,280**. [Please click here to see the budget](#).

For further information, specifically related to this operation please contact:

In the Italian Red Cross National Society

- **Secretary General: Cecilia Crescioli**, cecilia.crescioli@cri.it, +390655100500
- **Operational coordination:**
Ignazio Schintu, Head of Emergency and Rescue Operations, Ignazio.schintu@cri.it, +393346519283
Lorenzo S. Massucchielli, Head of Emergency Planning, Lorenzo.massucchielli@cri.it, +393929013688
Davide Del Brocco, Head of EA Project Unit, Davide.delbrocco@cri.it, +393391245323

In the IFRC

- **Alma Alsayed**, Operations Coordinator, alma.alsayed@ifrc.org
- **Antoine Belair**, Head of Disasters Climate and Crises (a.i.), Antoine.BELAIR@ifrc.org, +41227304281

In IFRC Geneva

- **Eszter Matyeka**, DREF senior officer, eszter.matyeka@ifrc.org

For IFRC Resource Mobilization and Pledges support

- **Andrej Naricyn**, Head of Partnerships and Resource Development, Andrej.NARICYN@ifrc.org

For Performance and Accountability support (planning, monitoring, evaluation and reporting enquiries)

- **David Kohlmann**, PMER Manager a.i., david.kohlmann@ifrc.org

How we work

All IFRC assistance seeks to adhere to the **Code of Conduct** for the International Red Cross and Red Crescent Movement and Non-Governmental Organizations (NGO's) in Disaster Relief and the **Humanitarian Charter and Minimum Standards in Humanitarian Response (Sphere)** in delivering assistance to the most vulnerable. The IFRC's vision is to inspire, encourage, facilitate and promote at all times all forms of humanitarian activities by National Societies, with a view to preventing and alleviating human suffering, and thereby contributing to the maintenance and promotion of human dignity and peace in the world.

DREF OPERATION

MDRIT003, ITALY, SARDINIA WILDFIRES 2021

08/08/2021

Budget by Resource

Budget Group	Budget
Seeds & Plants	26,879
Cash Disbursement	129,017
Relief items, Construction, Supplies	155,895
Distribution & Monitoring	6,451
Transport & Vehicles Costs	8,064
Logistics, Transport & Storage	14,514
National Society Staff	8,601
Volunteers	5,913
Personnel	14,514
Workshops & Training	1,075
Workshops & Training	1,075
Travel	3,118
Financial Charges	6,451
General Expenditure	9,569
DIRECT COSTS	195,568
INDIRECT COSTS	12,712
TOTAL BUDGET	208,280

Budget by Area of Intervention

AOF2 Shelter	74,427
AOF3 Livelihoods and Basic Needs	104,197
SFI1 Strengthen National Societies	573
SFI2 Effective International Disaster Management	20,610
SFI4 Ensure a strong IFRC	8,473
TOTAL	208,280

