

# Emergency Plan of Action (EPoA)

## North Macedonia: Wildfires

DREF n°	MDRMK009	Glide n°:	WF-2021-000109-MKD
Date of issue:	20 August 2021	Expected timeframe:	4 months
		Expected end date:	31 December 2021
Category allocated to the disaster: <b>Yellow</b>			
DREF allocated: CHF 494,365			
Total number of people affected:	80,000	Number of people to be assisted:	12,612 (4,204 families) <i>In addition to approx. 3,000 fire fighters and community volunteers.</i>
Provinces affected:	Kochani, Kumanovo, Valandovo, Bitola, Prilep, Shtip, Berovo, Delchevo, Skopje, Radovish, Kichevo, Veles, Kriva Palanka and Probishtip	Provinces/Regions targeted:	Kochani, Kumanovo, Valandovo, Bitola, Prilep, Shtip, Berovo, Delchevo, Skopje, Radovish, Kichevo, Veles, Kriva Palanka and Probishtip
<b>Host National Society presence:</b> HQ and 14 RC branches supported by 300 <sup>1</sup> volunteers and staff are implementing the operation			
<b>Red Cross Red Crescent Movement partners actively involved in the operation:</b> International Federation Red Cross Red Crescent Societies (IFRC)			
<b>Other partner organizations actively involved in the operation:</b> Fire Brigade, Crisis Management Center, Directorate for Protection and Rescue, the Army, Police, Ministry of Health			

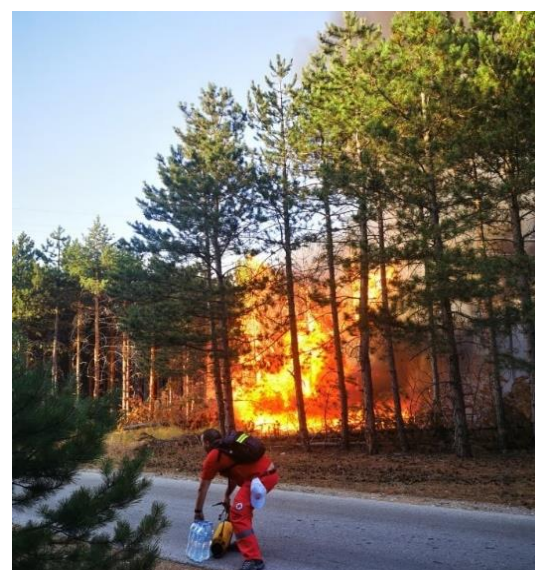
## A. Situation analysis

### Description of the disaster

Starting from 30 July 2021, the Republic of North Macedonia was hit by a heat wave that resulted in severe fires in several regions in the country. The fires have been raging for 16 days and are still not under control despite the enormous efforts of the state institutions responsible for crisis management as well as the local population. According to forecasts, the extremely hot weather is expected to continue until 25 August.

The hot weather and high temperatures resulted in intensive recurring fires in many regions in the country in the last 12 days. The severe fires in numerous regions resulted in devastation of forests, fertile land, crops and property of the population. One casualty and several injured persons (inhaling smoke) have been reported. Numerous houses as well as other facilities have burnt down and were damaged in many villages.

On 4 August 2021, the Government of the Republic of North Macedonia declared a state of crisis on the whole territory of the country for a period of 30 days. This is the trigger date for this DREF operation. There are still active fires in 3 locations as of 18 August. The situation cannot be predicted and may develop in different directions. The declared emergency situation in the country is currently until 30 August, with a possibility to be prolonged.



RCRNM volunteer providing support in the region of Kochani. Photo: RCRNM

<sup>1</sup> 142 volunteers were involved in the initial phase of the operation. Total of 300 volunteers that will be involved in the coming few weeks (142 +158)

The most affected regions are as follows: Strumica, Kochani, Kumanovo, Gevgelija, Valandovo, Bitola and Prilep, Shtip, Berovo, Pehchevo, Delchevo, Skopje, Radovish, Ohrid, Kriva Palanka, Veles.



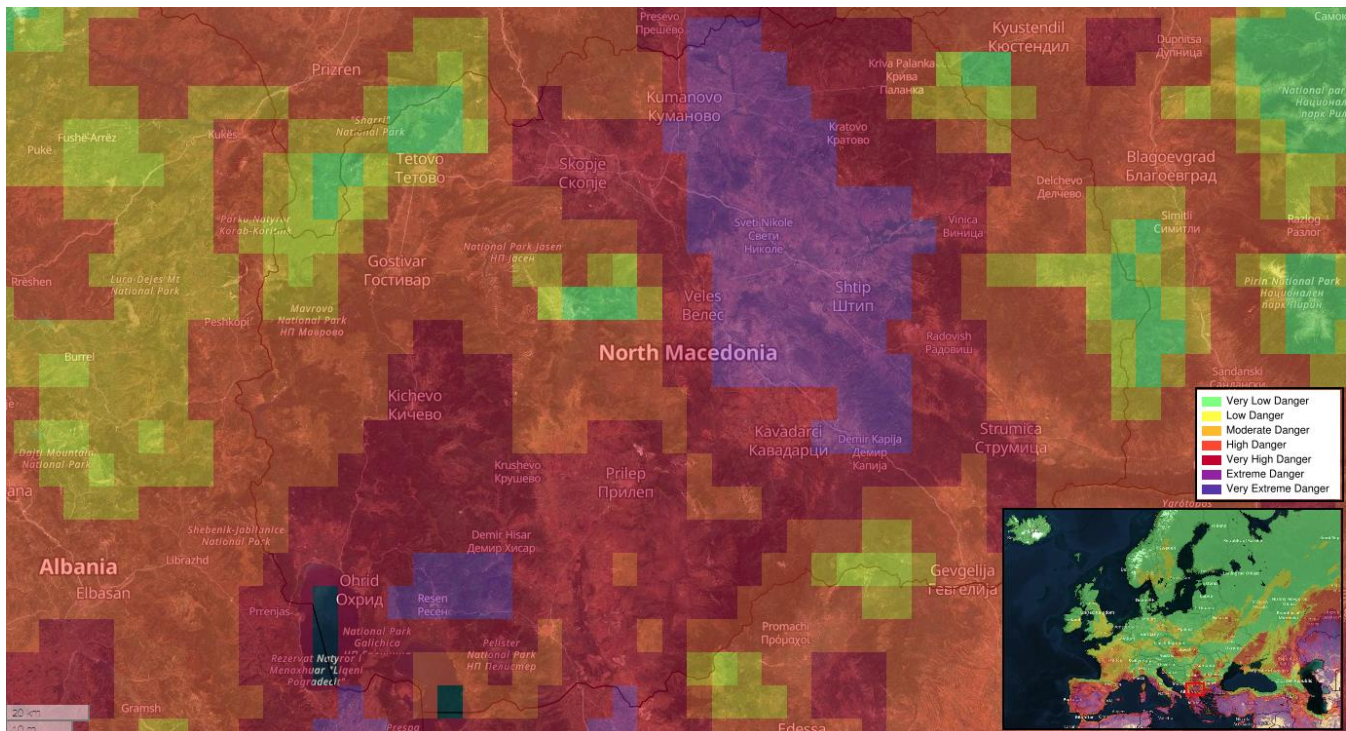
The crisis management system of the country is coordinating efforts to put out the fires and to assist the affected population. Response teams from the Fire Brigade, the Crisis Management Centre, the Directorate for Protection and Rescue, the Army, and the Red Cross of the Republic of North Macedonia are coordinating efforts in the field in order to cope and respond to the crisis situation. However, due to the limited resources of the state for dealing with fires (no air tractors and only two army helicopters available for firefighting), an expansion of wildfires was observed almost on the whole territory of the country.

The Red Cross of the Republic of North Macedonia (RCRNM) with all material and human resources, in frames of its possibilities, is participating in the overall efforts of the state authorities to respond to the crisis situation. The overall Red Cross operation is coordinated by the RCRNM Operational Centre which is responsible for coordination of the activities of the national society with the state authorities and the Red Cross branches.

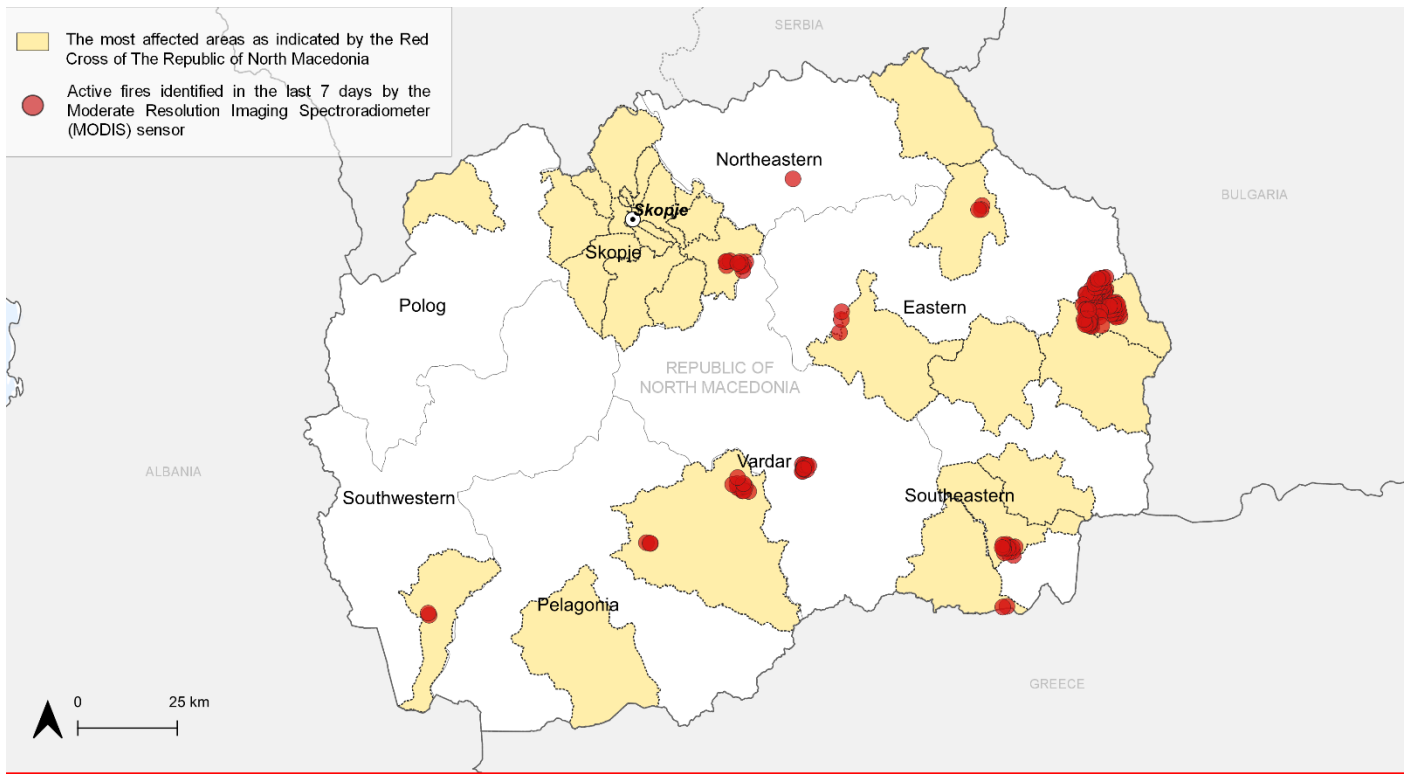
Map 1: Location of the Red Cross mobile teams for first aid and logistical support

The Head of the RCRNM Operational Centre participates on daily basis in the coordination meetings of the Centre for Crisis Management in order to coordinate the work of the National Society with the state agencies working in the field on national and local level.

The weather forecast for the forthcoming days is extreme high temperatures with +40°C, which means that the situation with the raging fires would continue during the whole month of August.



Map 2: Fire Weather Index/Fire Danger forecast (19.08.2021), source EFFIS



**North Macedonia, Wildfires  
Disaster Relief Emergency Fund**

MDRMK009  
WF-2021-000109-MKD  
2021/08/10  
Map data source: ICRC, NASA FIRMS, NTES  
DCC | IM | BUD



*The maps used do not imply the expression of any opinion on the part of the International Federation of Red Cross and Red Crescent Societies or National Societies concerning the legal status of a territory or of its authorities.*

**Map 3: Areas affected and active fires**

**Summary of the current response**

**Overview of Host National Society Response Action**

Red Cross of the Republic of North Macedonia is in process of providing immediate support to the state emergency response teams since the onset of fires. RCRNM teams are providing support in putting out fires, particularly providing assistance to the firefighting teams and the local population through food and drinking water provision and the National Society is also conducting a field assessment and collecting and processing information obtained from the Red Cross branches and the state institutions, as well as conducting needs assessment. The RCRNM volunteers also helped extinguish fires. In the disaster-affected regions, the branches of the RCRNM mobilized the emergency response teams, accompanied by the RCRNM staff from the HQ and the branches and they are in the field with the representatives of the state institutions providing logistics support and distributing water, food and hygiene parcels, sandwiches, blankets, mattresses, bedding, kitchen sets and other necessary items. The RCRNM teams also provide first aid support to the firefighting teams.



Red Cross of RNM volunteers providing support around the village of Chelopek, Kumanovo region. *Photo: RCRNM*

Affected populations were not evacuated from the regions but are staying temporarily in other houses in villages, with their relatives or friends, due to fear of endangered wellbeing in the period of the fires. Most of them stayed in other houses for security reasons when the fires were devastating the immediate surroundings of the villages. This figure amounts to the total figure of assisted 1,204 families. No collective evacuation centres were operated by the government.

**List of branches and number of staff and volunteers active in the field since 2 August, supporting fire-fighters, conducting assessment and distribution:**

TABLE 1. OVERVIEW OF INITIAL RESPONSE OF THE RCRNM IN THE AFFECTED REGIONS BY THE WILDFIRES								
Initial Disaster assessment			Phase 1 Distribution RCRNM stocks distributed for replenishment					
Affected Regions	Affected villages	No. of families targeted (Phase 1 + 2)	Food parcels	Hygiene parcels	Blankets	Mattresses	Kitchen sets	Bedding
<b>Berovo</b>	Pehcevo, Umlena Macevo, Budinarci Vladimirovo, Robovo	824	520	520	50	52	20	52
<b>Bitola</b>	Staravina, Skocivir Iveni	26	27	27	0	15	0	15
<b>Veles</b>	Vladilovci, Krajnici	25	0	0	0	0	0	0
<b>Delcevo</b>	Nov Istevnik Star Istevnik, Razlovci Treboviste	655	62	62	400	25	0	25
<b>Kriva Palanka</b>	Otosnica, Radibus Drenak, German Kiselica, Dolno Varoviste, Tlimici Konopnica	827	250	250	120	50	5	50
<b>Kocani</b>	Kocani (Velsko maalo, Drachevik I Bejrut)) Kostin Dol, Beli	568	100	100	400	165	3	165
<b>Valandovo</b>	Marvinci, Brajkovci Kazandol, Balinci	175	0	0	0	0	0	0
<b>Kumanovo</b>	Celopek, Murgash Zubovce, Nukljane Jacince, Klecovce Stepance, Zeluvin Malotino, Kokino Dovezence, Cetirce	296	140	140	420	69	10	69
<b>Prilep</b>	Nikodin Toplica Rakle	15	0	0	0	0	0	0
<b>Probishtip</b>	Tatomir, Zivalevo Konjuh	66	5	5	0	2	0	2
<b>Radovis</b>	Damjan, Pogulevo	24	0	0	0	0	0	0
<b>Kicevo</b>	Gresnica, Devic, Slatina	77	0	0	0	0	0	0
<b>Shtip</b>	Bogoslovec, Dobrshani Dragoevo, Shtip Krivi dol	25	25	25	0	11	3	11
<b>Skopje</b>	Pobozje, Raovic Bukovic, Kopanica, Divlje Krushje, Gradmanci Agino selo (rafinerija) Chajlane, Semeniste Sonje	601	75	75	0	115	9	115
<b>Total</b>		<b>4,204</b>	<b>1,204</b>	<b>1,204</b>	<b>1,390</b>	<b>504</b>	<b>50</b>	<b>504</b>

**Overview of distributed assistance of the Red Cross of RNM to firefighting teams in the affected regions:**

<b>TABLE 2. OVERVIEW OF DISTRIBUTED SANDWICHES AND WATER FROM THE RED CROSS FOR FIREFIGHTERS IN THE AFFECTED REGIONS</b>		
<b>Region</b>	<b>Water bottles 0,5 l</b>	<b>Sandwiches</b>
Berovo	7,120	420
Bitola	256	120
Veles	263	0
Delcevo	5,895	498
Kriva Palanka	4,200	125
Kocani	2,592	0
Valandovo	211	0
Kumanovo	6,700	120
Prilep	2,895	0
Probishtip	268	0
Radovis	364	0
Kicevo	112	0
Shtip	562	246
Skopje	8,596	471
<b>Total</b>	<b>40,034</b>	<b>2,000</b>

Total of 550 protective sets (masks, gloves and hand sanitizers) for Red Cross mobile teams were used during the first phase of the operation for protection from COVID-19 and smoke inhalation.

On 4 August 2021, RCRNM developed a Plan for Emergency response in case of fires. In accordance with the Plan the RCRNM has the following human resources (HQ and branches) on standby as emergency response teams to assist the firefighters and the local population to cope with the raging fires:

- Logistics/ Distribution/Assessment Team members – 431 persons
- First Aid Team members – 120 persons
- PFA Team members – 128 persons

The RCRNM opened 5 SOS telephone lines for the provision of psychological first aid (PFA) for the affected population from the fires. PFA is provided by the RC trained volunteers. Total of 10 RC volunteers provided online support for all interested persons affected by the fires and they provided tips for coping with the situation that threatened the well-being of the citizens. The opened telephone lines were divided into regions and municipalities. The telephone lines remain operational.

The RCRNM has signed agreement for cooperation with the Chamber of Psychologists and both organizations agreed to provide support with PSS/PFA team presence in the field for people that would require such support.

**Overview of active volunteers and staff of the RCRNM in the fire-affected regions for Phase 1 response**

<b>RC Branch / unit</b>	<b>Number of volunteers/staff active</b>	<b>RC Vehicles</b>
National Emergency Response Team	12	6
Kochani	10	1
Kumanovo	16	3
Kriva Palanka	9	1
Delchevo	28	3
Veles	8	1
City of Skopje	14	4
Shtip	9	1
Berovo	7	4

Bitola	5	2
Valandovo	6	1
Probishtip	2	1
Sveti Nikole	2	1
Kichevo	2	1
Strumica	2	1
Gevgelija	2	1
Prilep	4	1
Radovish	4	1
<b>Total of 13 RC branches and National ERU</b>	<b>Total of 142 volunteers and staff</b>	<b>34 RC vehicles</b>

As of 13 August 2021, total of 142 volunteers and staff were active on the field providing emergency support in the fire-affected regions. Total of 34 RCRNM vehicles were used on daily basis in the response operation, depending on the needs in the fire-affected regions.

### Overview of Red Cross Red Crescent Movement Actions in country

The International Federation of Red Cross and Red Crescent Societies (IFRC) is in constant contact with the RCRNM and prepared to support the National Society efforts in terms of replenishment of the stock reserves and provision of required immediate assistance to the affected population from the fires. At this stage, no other RCRC National Societies' are involved in the operation.

### Overview of other actors' actions in country

In the past week the Red Cross of the Republic of North Macedonia was in constant communication and coordination with the state institutions on central and local level.

The overall coordination of the emergency situation due to the heatwave and fires in the country is coordinated by the Crisis Management Centre. The response operation is supported by the national and local teams of the Fire Brigade, Crisis Management Center, Directorate for Protection and Rescue, the Army, and the Red Cross of the Republic of North Macedonia, Ministry of Health and other responsible institutions and the local population.

Firefighters and local population are fighting the fires around the clock in various regions of the country. However, due to limited specialized firefighting equipment, wildfires continue to spread throughout the country. The state has three firefighting aircrafts, but they are not in operation (service required) and the only air support for firefighting is provided by two army helicopters. EU Civil Protection has been activated.

The State Assessment Team (comprised of the Deputy Managers of Crisis Management Centre, Directorate for Protection and Rescue, the Deputy Chief of Staff of the Army, the Director for Military Intelligence and the Adviser of the Cabinet of the President of the Republic of Macedonia) in a session held on 4 August, proposed the Government of the Republic of North Macedonia to declare a state of crisis on the whole territory of the country for a period of 30 days, which was declared by the Government the same day.



*Red Cross of RNM volunteers providing support around the village of Budinarci, Berovo region. Source: RCRNM*

As of 4 August, the country also has international assistance from Serbia, Bulgaria, Slovenia, Austria and Romania and Montenegro, which are assisting with the firefighting operation with aircraft, equipment, vehicles, and human resources.

## **Needs analysis, targeting, scenario planning and risk assessment**

### **Needs analysis**

The National Society is in the process of conducting detailed assessment in the field. The emerging needs for the days to come will be provision of humanitarian assistance for the affected population comprised of food and hygiene parcels, water, blankets, bedding and mattresses, and disinfectants. Immediate health needs are covered by the Ministry of Health of RNM.

The Initial Assessment indicates that out of the 80,000 people living in the affected areas, the fire affected a total of 4,204 families. The fires are expected to have a long-lasting impact on the overall population in the fire-affected regions due to the devastated environment, crops and the livelihood of the people. The drinking water sources are not affected so far and they are monitored by the state responsible institutions.

The rapid assessment and sectoral in-depth assessment are ongoing, in a joint and coordinated way with the local emergency management authorities, and in coordination with fire containment operations. As soon as the assessment will be completed - a more precise picture will be shared.

The main issues are related to the loss or severely damaged livelihoods. The economics in the area mainly depend on agriculture and farming. The wildfires burnt over 10,000 ha of forests and crops. Many agricultural businesses and private properties have been damaged by the fires. Many people lost their means of income with the field of crops burnt, farms and cattle burnt or smoked.

### **Targeting**

The overall response operation is coordinated by the Centre for Crisis Management both at national and regional level. The RCRNM as part of the national system for crisis management is providing assistance and support to the firefighting teams and immediate assistance to the affected population.

In the first phase, the RCRNM branches in the affected regions distributed material assistance comprised of food parcels, hygiene parcels, blankets, mattresses, bedding and kitchen sets to 1,204 households. The targeted families covered in the initial stage of the operation are those families that evacuated their houses because of the vicinity of the fires and are temporarily staying, mainly relatives in the same communities but in safer locations.

In the second phase following the natural disaster, the RCRNM will focus on provision of assistance to the other families affected by the fires, who suffered significant material damage on their property and crops as an immediate assistance to cope with the emergency in the initial period after the disaster. The operation will address the needs of 3,000 households in the fire-affected areas. All the households will receive food and hygiene parcels. Household items will be prioritized based on the following criteria:

- Households that have their houses totally destroyed (approx. 10 HH at present)
- Households that have significant damage to their properties and needed to replace those items.
- Those who left their houses temporarily and have been hosted by relatives (mostly the phase 1 figures).
- Some blankets have been also offered to firefighters, based on the need.

As for the total targeted population, for example, food and hygiene parcels, including the criteria mentioned above plus also the following:

- Households that had their sources of income impacted.
- Households that lost their fields/ crops due to the fire.
- Households that have lost their livestock/ or had their burned barns.

All the categories above are expected to have less income in the next few months; therefore the basic food and hygiene items were considered good immediate support that will be beneficial to all.

The RCRNM also plans to provide direct support for the firefighting teams comprised of logistics support, first aid, PFA, sandwiches and water. The RCRNM plans to involve up to 300 RC volunteers for implementation of the DREF operation within a period of 4 months. The National Society also plans to conduct training on firefighting for 30 RC volunteers from the local RC branches in order to enhance local emergency response capacities for coping with wildfires on local level.

The RCRNM anticipate that relief distribution is expected to be followed by cash distributions by the government to support recovery.

## Scenario planning

Scenario	Humanitarian consequence	Potential Response
Fires are contained and there is access to the whole area	People can gradually recover economically and restart normal life	Recovery and livelihood support.
Wildfire outbreaks continue due to high temperatures	The devastating fires might have a significant impact on the environment and on the overall wellbeing of the population and the economy in the affected regions.	Shelter and livelihood support where possible. Provided assistance to the overall efforts of the state crisis management system.
COVID-19 variant Delta will increase multi-hazard needs	The virus will spread again adding a new level of complexity having the need to counter COVID-19 situations in the affected areas.	Deployment of additional medical emergency structures, with biocontainment capacities, in support to the health authorities.

## Operation Risk Assessment

- The high temperatures are expected to continue with possible additional fire outbreaks in the country which may require expansion of the operation in other parts of the country and protection of the already affected areas.
- Potential negative evolution of the COVID-19 situation, with consequential need to increase distances and ensure isolation of the affected people is likely, considering the trend in the region. This element can both affect the operation, but more widely the whole regional capacities, requiring a quick re-routing of RCRNM assets and potential deployment of additional resources.
- Potential impact of floods and hydro-geological events in case of heavy rains in the areas around the fire affected regions as a result of forests that provided natural protection for the settlements below the mountains.

National Society response to COVID-19 is supported through the [IFRC global appeal](#), which will facilitate supporting them to maintain critical service provision, while adapting to COVID-19. This DREF operation is aligned with and will contribute to the current global strategy and regional Emergency Plan of Action for COVID-19 developed by the IFRC Regional Office for Europe, in coordination with global and regional partners. IFRC continues to assess how emergency operations in response to disasters and crisis should adapt to this crisis and provide necessary guidance to its membership on the same. The NS will keep monitoring the situation closely, focusing on the health risks, and revise accordingly if needed taking into consideration the evolving COVID-19 situation and the operational risks that might develop, including operational challenges related to access to the affected population, availability of relief items and procurement issues, and movement of NS volunteers and staff as well as international staff. For more information, please consult [the COVID-19 operation page on the IFRC GO platform](#).

## B. Operational strategy

### Overall Operational objective:

The overall objective of this operation is to contribute to the provision of humanitarian assistance to total of 4,204 families affected by the wildfires, (average of 3 members per family). This includes the replenishment of relief items distributed in the first phase of the operation for 1,204 affected families and the second part of the operation targets additional 3,000 families with relief support).

The operation also aims to continue to provide basic support for some 3,000 firefighters and community volunteers on the ground as well as operational support for the RCRNM volunteers and staff operating on the ground.

Phase	Description	Timing (months)
1. Assessment	Rapid and detailed assessment focusing on damage analysis and targeting of the people assisted.	August
	Conducting procurement process.	September – October



2. Procurement and in-kind distribution	Distribution of material assistance for addressing immediate needs of affected families from the fires (hygiene and food parcels and bedding, and other planned items).	
3. Support for firefighting teams	Recruitment of volunteers for participating in emergency response operation. Procurement of uniforms, and other operational needs for functioning of the RC ERU teams to provide support to firefighting teams. Procurement and distribution of water and sandwiches for firefighting field operation.	August - September
4. Capacity building	Translation and printing of the DREF Guidelines 2020. Conducting training for firefighting for RC volunteers to provide support on local level during the operations.	September
5. Monitoring and Evaluation of the effects	Continuous assessment operation and M&E action to evaluate the effects of the operation. Obtaining feedback from the RC branches, partner organizations and beneficiaries.	August - December
6. Exit strategy	Transfer to the local and regional authorities for the mid to long-term support and rehabilitation.	December

### Planned support for the affected families from fires

The RCRNM aims to support 4,204 affected families with material assistance comprised of food parcels, hygiene parcels, baby parcels, mattresses, blankets, kitchen sets, bedding sets.

The RCRNM also aims to continue the support for the firefighting teams operating in the field with bottled water and sandwiches.

	Planned support for the second phase of the operation <sup>2</sup>	Quantity
1	Family food parcels	3,000
2	Hygiene parcels	3,000
3	Baby parcels	200
4	Mattresses	500
5	Blankets	3,000
6	Kitchen sets	100
7	Bedding sets	1,000
8	Bottled water for firefighting teams 0,5 l	40,000
9	Sandwiches for firefighting teams	1,500

The assistance in-kind is procured with declarations for quality from the providers.

**Contents of the food and hygiene parcels distributed to date has reached 1,204 families and for an additional 3,000 planned target families to be covered in the second phase of the operation. These are standard family size parcels used by the National Society in previous operations.**

<sup>2</sup> Blankets, mattresses, bedding sets, kitchen sets are not for all targeted people but will be distributed based on the needs assessment (some families don't need these items).

FOOD PARCEL		HYGIENE PARCEL	
Composition:	Quantity		Quantity
Flour type 400 5kg	1	Detergents for machine wash 3 kg.	1
Sugar 900 gr.	1	Shampoo for hair 1 lit.	2
Salt 1kg	1	Toilet soap 100 gr.	1
Rice 1kg	1	Toilet paper 4/1 rolls	1
Beans 1 kg.	1	Sanitary pads 10/1 pack	2
Cooking oil 1 lit.	2	Toothpaste 100 ml.	2
Tinned fish 100 gr.	6	Shaving cream 60 ml.	1
Ready to eat canned food 400 gr.	4	Shaving razors 5/1	1
Pasta 400 gr	2	Dishwashing liquid 0.500 ml.	1
Filter tea 20/1	2	Wet wipes 100/1	4
Card box, with printed logo	1	Toothbrush	1
		Card box, with printed logo	

1 hand sanitizer and 5 gas masks and 1 more additional soap will be added to the newly procured hygiene parcels.

BABY PARCEL	
Composition:	Quantity
Baby diapers (120 pieces)	1
Baby shampoo (1 l.)	1
Baby soap (50 gr.)	1
Baby lotion	1
Wet tissues (72 pieces)	2

#### First Aid kit for volunteers

##### Contents

- Cotton wool
- Bandages
- Triangular bandages
- Adhesive tape
- Foil blanket
- Safety pins
- Scissors and protective razor
- Sterile gloves
- Special handkerchief for PCR

100 First Aid kits will be procured for RC volunteers working on the field in order to be able to administer first aid to injured people in fire-affected areas.

#### The composition of the uniform set for RC volunteers and staff is as follows:

- T-shirt
- Shirt
- Field shoes
- Pants
- Softshell jacket
- RC vest
- Fluorescent vest

#### Human Resources

The RCRNM deployed its staff and volunteers from the national headquarters and branches from the onset of the wildfires in North Macedonia.

In the first phase of the disaster, until 19 August 2021, a total of 142 staff and volunteers were active on the ground. Depending on the development of the situation and the subsequent needs, the National Society will deploy additional human resources to meet the operational needs in the affected regions.

Due to the high temperatures, it is difficult to predict how the situation will develop. If the situation deteriorates and fires continue to spread, the RCRNM teams will continue to provide support to the firefighting teams and the local population.

Total available human resources of the National Society (HQ and branches) in accordance with the Plan for emergency response in case of fires is as follows:

Logistics/ Distribution/Assessment Team members – 431 persons

First Aid Team members – 120 persons

PFA Team members – 128 persons

### **Logistics and supply chain**

Logistics will support the procurement of goods, packing of goods, transport and in-kind distribution. The procurement of the required products for making the parcels within this operation will be done in compliance with the procedure for procurements of the RCRNM and the IFRC procurement guidelines. The stocks will be placed in the RCRNM central warehouse in Skopje. The distribution process will be organized with Red Cross vehicles and will be done through the Red Cross branches of RNM.

### **Communications (Press)**

Information on the operation will be disseminated by the RCRNM through web and social media, and in coordination with the state authorities in order to highlight the response to the humanitarian needs and the evolving and emerging humanitarian concerns. Information will also be shared via the IFRC GO Platform.

### **Community Engagement and Accountability (CEA)**

CEA is integrated throughout the intervention to ensure maximum and meaningful participation of affected communities. The RCRNM has 33 RC branches and city organization in the capital Skopje which will support CEA throughout the operation. The National Society will use its branch feedback mechanisms to monitor and evaluate the situation. RC branches on monthly basis will ensure accountability of the operation by addressing potential complaints/feedback from the target households and communities.

### **Safety and Security**

The volunteers and staff of the RCRNM are properly trained, equipped and insured. Health and safety procedures are in place and specific COVID-19 Standard Operating Procedures (SOPs) have been followed (and regularly updated according to the Ministry of Health guidance), to reduce probability of contagion during response operations.

### **Planning, Monitoring, Evaluation and Reporting (PMER)**

The RCRNM will be monitoring the intervention to ensure a detailed feedback on activities identified, according to the indicator defined. Monitoring and evaluation will be part of the process to ensure efficient implementation of the EPoA. Lesson learned exercise will be conducted at the end of the operation to gather operational learning and improve future response efforts. Reports will be produced in accordance with the provided guidelines by the assigned project coordinator.

### **Administration and Finance**

The Red Cross of RNM will be responsible for managing the funds in accordance with standards practices for IFRC on operational transfers. A dedicated team will follow both Admin & Finance and PMER actions.

## C. Detailed Operational Plan



### Shelter

People targeted: 4,390 persons

Male: 2,300

Female: 2,090

Requirements (CHF): 110,553

**Needs analysis:** The Initial Assessment indicates that the fire affected total of 4,390 persons in terms of shelter needs in the fire-destroyed regions. In the initial phase, total of 1,390 persons were supported with household items (blankets, mattresses, bedding and kitchen sets). The effects of the fires are expected to be felt by the overall population in the fire-affected regions due to the devastated environment, crops and the livelihood of the people.

**The strategy:** In the first phase, the assistance of household items, comprised of blankets, mattresses, bedding and kitchen sets, was provided to 1,390 people staying with their relatives and firefighters, and in the second phase additional 3,000 persons will be granted this assistance comprised of basic items. This emergency distribution will be complemented with a mid- to long-term support from the state authorities for damage compensation and rehabilitation.

**Risk analysis:** Immediate: additional outbreaks in the area resulting in the need to enlarge the operation and to protect the already damaged properties. The potentially negative evolution of the COVID-19 situation, with consequential need to increase social distancing (affecting distribution timing and cost) and to ensure isolation of the affected people is likely, considering the trend in the region. Potential impact of floods and hydro-geological events due to heavy rains in the fire affected areas, in September – November 2021. Delays in receiving long-term financial or technical support from the state authorities.

**Population to be assisted:** The strategy adopted is to distribute material assistance to most vulnerable people in the second phase comprised of 3,000 blankets, 500 mattresses, 1,000 bedding and 100 kitchen sets for approximately 3,000 people in the affected regions, among which firefighters. The assistance will be distributed by Red Cross vehicles and volunteers as an immediate support. The selection criteria is still under development and it will be based on the ongoing assessment,

**Programme standards/benchmarks:** RCRNM will ensure alignment and coordination with the national and local authorities. SPHERE standards will be followed.

P&B Output Code	<b>Shelter Outcome 1: Communities in disaster and crisis affected areas restore and strengthen their safety, well-being and longer-term recovery through shelter and settlement solutions</b>						% of people who received household items report that their basic needs were met (Target: 80%)										
	<b>Shelter Output 1.1: Shelter and settlements and basic household items assistance is provided to the affected families.</b>						# of people that received household items (Target: 4,390)										
	Activities planned Week	1	2	3	4	5	6	7	8	9	10	11	12	13	14	15	16
AP005	Assessment of shelter needs, capacities and gaps																



Livelihoods and basic needs Outcome 1: Communities, especially in disaster and crisis affected areas, restore and strengthen their livelihoods		% of people who report that the food aid received was sufficient to cover their immediate basic needs (Target: 80%)															
P&B Output Code	Livelihoods and basic needs Output 1.2: Basic needs assistance for livelihoods security including food is provided to the most affected communities	# of people that received food parcels (Target: 12,612) # of firefighters that received sandwiches (Target: 1,500)															
	Activities planned Week	1	2	3	4	5	6	7	8	9	10	11	12	13	14	15	16
AP008	Conducting procurement procedure for 4,204 food parcels (replenishment included)																
AP008	Distribution of 3,000 food parcels to vulnerable families affected by the fires.																
AP008	Procurement and distribution of 1,500 sandwiches for firefighters, plus reimbursement of funds for already distributed sandwiches in the first phase.																
P&B Output Code	Livelihoods and basic needs Output 1.4: Community awareness activities on livelihoods strengthening and protection are carried out with target communities and public actors.	# of people that were reached with awareness-raising activities (Target:50,000)															
	Activities planned Week	1	2	3	4	5	6	7	8	9	10	11	12	13	14	15	16
AP010	Development and distribution of public awareness-raising materials (50,000 fliers) on protection from fires and protection of the environment																



## Health

**People targeted: 800**

Male: 400

Female: 400

**Requirements (CHF): 9,905**

**Needs analysis:** The emergency also has a negative impact on the psychosocial well-being of the people and might deteriorate the health of the affected population, particularly in terms of COVID-19. First aid activities are required for firefighters and the local population fighting the fires. Transfer to medical institutions and health care services continues to be provided by the health service providers.

**Risk analysis:** Immediate: additional outbreaks in the area resulting in the need to enlarge the operation and to protect the already damaged properties. Safety of RC volunteers due to COVID-19 pandemic. Mid-term: potential negative evolution of COVID-19 situation, with consequential need to increase distances and ensure isolation of the affected people is likely, considering the trend in the region. Potential impact of floods and hydro-geological events due to heavy rains in the fire affected areas, in September – November 2021. Delays in receiving long-term financial or technical support from the state authorities.

**Population to be assisted:** The target population is 500 people that experiences psychosocial consequences from the disaster and 300 injured people from the fires that require first aid assistance, as detected in the initial assessment.

**Programme standards/benchmarks:** SPHERE standards will be followed.

P&B Output Code	Health Outcome 2: The immediate risks to the health of the affected populations are reduced through improved access to medical treatment	# of first aid kits distributed (Target: 100) # of people that received first aid assistance (Target: 300)															
	Health Output 2.1: Improved access to health care and emergency health care for the targeted population and communities.																
	Activities planned Week	1	2	3	4	5	6	7	8	9	10	11	12	13	14	15	16
AP022	Procurement of 100 First Aid kits for RC volunteers to respond to emergency needs of the firefighters and affected population as a result of fires																
AP022	First aid response activities are provided to some 300 injured people																
P&B Output Code	Health Outcome 4: Transmission of diseases of epidemic potential is reduced	# of RC personnel tested for COVID-19 (Target: 300)															
	Health Output 4.1: Community-based disease control and health promotion is provided to the target population																
	Activities planned Week	1	2	3	4	5	6	7	8	9	10	11	12	13	14	15	16
AP021	300 COVID-19 rapid tests for RC personnel and volunteers are provided for the workshop participants as well as for field activities of RC personnel. 40 PCR tests will be conducted in authorized laboratories in case of need for RC personnel.																
P&B Output Code	Health Outcome 6: The psychosocial impacts of the emergency are lessened	# of people that received PSS on the RC SOS telephone lines (Target:500)															
	Health Output 6.1: Psychosocial support provided to the target population as well as to RCRC volunteers and staff																
	Activities planned Week	1	2	3	4	5	6	7	8	9	10	11	12	13	14	15	16
AP023	Provide PSS to people affected by the fires through 5 SOS lines																
AP023	Provide PFA to RC personnel and people in the field in cooperation with the Chamber of Psychologists																



## Water, sanitation and hygiene

People targeted: 12,612 persons and firefighters

Male: 11,500

Female: 5,112

Requirements (CHF): 111,492

**Needs analysis:** The Initial Assessment indicated that the fire affected total of 4,204 families in 14 fire-destroyed regions, with consequential losses on their personal property. The distribution of essential hygiene items will allow certain material assistance for the most affected families in order to cover their immediate hygiene needs and good health. Total of 1,204 family hygiene parcels were distributed in the first phase of the operation to 3,612 people. The Red Cross distributed 40,000 bottles (0.5l) with water to firefighting teams and local population. Protective equipment and uniforms will be provided to RC volunteers in order to successfully implement the operation in the field.

**Risk analysis:** Immediate: additional outbreaks in the area resulting in the need to enlarge the operation and to protect the already damaged properties. Mid-term: potential negative evolution of COVID-19 situation, with consequential need to increase distances and ensure isolation of the affected people is likely, considering the trend in the region. Potential impact of floods and hydro-geological events due to heavy rains in the fire affected areas, in September – November 2021. Delays in receiving long-term financial or technical support from the state authorities.

**Population to be assisted:** The targeted 9,000 people (3,000 families) in the second phase of the operation will receive emergency hygiene parcels as an assistance to overcome this challenging period. This is an initial assessment to be followed by substantial state support once the assessment of the damage is being done and funds are allocated for assistance to the affected population. Additional 40,000 bottles (0.5l) with water are foreseen to be provided to fire-fighting teams and local population in case of expansion of fires.

**Programme standards/benchmarks:** RCRNM will ensure alignment and coordination with the national and local authorities. Adherence to SPHERE standards will be ensured.

P&B Output Code	WASH Outcome 1. Immediate reduction in risk of waterborne and water related diseases in targeted communities						% of affected families covered by hygiene kit distributions										
	WASH Output 1.5: Hygiene-related goods (NFIs) which meet SPHERE standards and training on how to use those goods is provided to the target population						# of people that received hygiene parcels (Target: 12,612) # of firefighters that received water (Target: 3,000)										
	Activities planned Week	1	2	3	4	5	6	7	8	9	10	11	12	13	14	15	16
AP030	Assessment of hygiene needs and identification of most vulnerable families affected	■	■	■	■	■	■										
AP030	Conducting procurement procedure for 4,204 hygiene parcels (replenishment included)	■	■	■	■	■	■	■	■								
AP030	Distribution of 3,000 hygiene parcels to vulnerable families affected by the fires.					■	■	■	■	■	■	■					
AP030	Conducting procurement of 80,034 bottles (0.5 l) of water for firefighters, (replenishment included).	■	■	■	■	■	■										



AP030	Distribution of 40,000 bottles (0.5 l) of water for firefighters																		
	Conducting procurement and distribution of baby hygiene parcels																		

## Strategies for Implementation

Requirements (CHF): CHF 97,754

P&B Output Code	S1.1: National Society capacity building and organizational development objectives are facilitated to ensure that National Societies have the necessary legal, ethical and financial foundations, systems and structures, competences and capacities to plan and perform	# of volunteers involved in the operation (Target: 300)															
	Output S1.1.4: National Societies have effective and motivated volunteers who are protected	# of volunteers insured in the operation (Target: 300) # of volunteers trained (Target: 30) # of RC representatives participating in the lessons learned workshop (Target: 20)															
	Activities planned Week	1	2	3	4	5	6	7	8	9	10	11	12	13	14	15	16
AP040	Ensure that 300 volunteers are insured																
AP040	Provide complete uniforms for volunteers and backpacks for firefighting																
AP040	Provide psychosocial support to volunteers																
AP040	Ensure volunteers are aware of their rights and responsibilities																
AP040	Ensure volunteers' safety and wellbeing																
AP040	Training for 30 volunteers on firefighting																
AP040	Lessons learned workshop for 20 RC representatives involved in the operation																
P&B Output Code	Output S2.1.3: NS compliance with Principles and Rules for Humanitarian Assistance is improved	# of functional feedback mechanisms in place (Target: TBC)															
	Activities planned Week	1	2	3	4	5	6	7	8	9	10	11	12	13	14	15	16
AP049	Ensure that the Principles and Rules, Emergency Response Framework and Emergency Appeal and DREF procedures are well understood and applied																
AP049	Principles and Rules are reflected in the contingency plans of the National Society.																
AP084	Community communication activities ensure people are kept informed of operational plans and progress and have they information they need about the response																

AP084	Community feedback systems (including rumour and/or perception tracking) are established, and feedback received from the RC branches and acted upon and used to improve the operation																	
P&B Output Code	<b>Output S2.1.4: Supply chain and fleet services meet recognized quality and accountability standards</b>	<i>During the lessons learned exercise, conclusions and recommendations are derived for improvement of future operations discussed (Target: Yes)</i>																
	Activities planned Week / Month	1	2	3	4	5	6	7	8	9	10	11	12	13	14	15	16	
AP050	Warehouse insurance, servicing of field vehicles used in the operation, goods reception, insurance of vehicles, fleet maintenance, and fire distinguishers																	
P&B Output Code	<b>Output S4.1.3: Financial resources are safeguarded; quality financial and administrative support is provided contributing to efficient operations and ensuring effective use of assets; timely quality financial reporting to stakeholders</b>	<i># of financial reports submitted on time (Target: 2)</i>																
	Activities planned Week	1	2	3	4	5	6	7	8	9	10	11	12	13	14	15	16	
AP064	Salary for DREF Coordinator, Finance Assistant and Reporting Officer are supported																	
AP065	The Office costs for HQ and 10 operating Branches are supported																	

## D. Budget

The total budget for this DREF operation is **CHF 494,365**. [Please click here to see the budget.](#)

**For further information, specifically related to this operation please contact:**

**In the Red Cross of the Republic of North Macedonia**

- Secretary General: **Sait Saiti**; Email - [saiti@redcross.org.mk](mailto:saiti@redcross.org.mk), Tel. +389 72214554
- Operational coordination: **Ali Samet**, DREF Coordinator, Email - [samet@redcross.org.mk](mailto:samet@redcross.org.mk)  
Tel. +389 71 223894

**In the IFRC Regional Office for Europe**

- **Agnes Rajacic**, Senior Officer, Email: [agnes.rajacic@ifrc.org](mailto:agnes.rajacic@ifrc.org)
- **Alma Alsayed**, Operations Coordinator, Email: [alma.alsayed@ifrc.org](mailto:alma.alsayed@ifrc.org)
- **Andreas Weissenberg**, Head of DCC, email: [andreas.weissenberg@ifrc.org](mailto:andreas.weissenberg@ifrc.org)

**In IFRC Geneva**

- **Eszter Matyeka**, DREF Senior Officer, [eszter.matyeka@ifrc.org](mailto:eszter.matyeka@ifrc.org)
- **Antoine Belair**, Senior Officer, Operations Coordination, email: [antoine.belair@ifrc.org](mailto:antoine.belair@ifrc.org)

**For IFRC Resource Mobilization and Pledges support:**

- **Andrej Naricyn**, Head of Partnerships and Resource Development, [andrej.naricyn@ifrc.org](mailto:andrej.naricyn@ifrc.org)

## How we work

All IFRC assistance seeks to adhere to the **Code of Conduct** for the International Red Cross and Red Crescent Movement and Non-Governmental Organizations (NGO's) in Disaster Relief and the **Humanitarian Charter and Minimum Standards in Humanitarian Response (Sphere)** in delivering assistance to the most vulnerable. The IFRC's vision is to inspire, **encourage, facilitate and promote at all times all forms of humanitarian activities** by National Societies, with a view to **preventing and alleviating human suffering**, and thereby contributing to the maintenance and promotion of human dignity and peace in the world.

**DREF OPERATION**

MDRMK009 NORTH MACEDONIA:WILDFIRES

8/20/2021

**Budget by Resource**

Budget Group	Budget
Clothing & Textiles	107,496
Food	114,511
Water, Sanitation & Hygiene	101,262
Medical & First Aid	8,225
Teaching Materials	2,500
Utensils & Tools	6,000
<b>Relief items, Construction, Supplies</b>	<b>339,995</b>
Storage	2,138
Transport & Vehicles Costs	26,900
<b>Logistics, Transport &amp; Storage</b>	<b>29,038</b>
National Society Staff	41,000
Volunteers	23,450
<b>Personnel</b>	<b>64,450</b>
Workshops & Training	14,850
<b>Workshops &amp; Training</b>	<b>14,850</b>
Travel	2,000
Information & Public Relations	1,060
Office Costs	2,800
Communications	4,000
Financial Charges	6,000
<b>General Expenditure</b>	<b>15,860</b>
DIRECT COSTS	464,193
INDIRECT COSTS	30,173
<b>TOTAL BUDGET</b>	<b>494,365</b>

**Budget by Area of Intervention**

AOF2 Shelter	110,553
AOF3 Livelihoods and Basic Needs	164,661
AOF4 Health	9,905
AOF5 Water, Sanitation and Hygiene	111,492
SFI1 Strengthen National Societies	90,299
SFI2 Effective International Disaster Management	2,130
SFI4 Ensure a strong IFRC	5,325
<b>TOTAL</b>	<b>494,365</b>

