


www.ifrc.org
Saving lives,
changing minds.

Emergency Plan of Action (EPoA)

Myanmar: Flood

 International Federation
of Red Cross and Red Crescent Societies

DREF Operation	MDRMM017	Glide n°:	FL-2021-000128-MMR
For DREF; Date of issue:	01/09/2021	Expected timeframe:	4 months
		Expected end date:	23/12/2021
Category allocated to the of the disaster or crisis: Yellow			
DREF allocated: CHF 150,134			
Total number of people affected:	TBT	Number of people to be assisted:	1500 HHs (6,750 individuals)
Region affected from previous flood/likely to be affected	Shan (East), Rakhine and Tanintharyi / Magway, Mandalay, Kayin, Mon, Kachin, Sagaing, Chin	Regions targeted:	5
Host National Society presence: The Myanmar Red Cross Society (MRCS) is the nation's largest humanitarian organization and works through 330 branches covering all 17 regions and states. MRCS has 700 staff and 44,000 volunteers. This includes 1,827 Emergency Response Teams (ERT) members, of which 4,000 are the active Red Cross volunteers in the communities and township levels. MRCS also has 59 Red Cross volunteers in Public Health in Emergency (PHiE) level A (57) and level B (2), 290 in Epidemic Control for Volunteers (ECV) and nationwide 1,827 Emergency Response Teams (ERT) trained members ready for response to enhancing the overall capacity of the National Society to prepare for and respond to crisis situations.			
Red Cross Red Crescent Movement partners actively involved in the operation: MRCS will lead the overall response operation. This action is supported by the International Federation of Red Cross and Red Crescent Societies (IFRC) however, some specific affected regions may also support from the International Committee of the Red Cross (ICRC).			
Other partner organizations actively involved in the operation: Weather forecasts are monitored through Department of Meteorology and Hydrology (DMH) and Department of Social Welfare are part of the preparedness, response and early warning information sharing. Likewise, Department of Disaster Management (DDM) is leading the coordination of the response in which MRCS has established strong coordination. Humanitarian Country Team (HCT) coordinates inter-agency emergency response through UNOCHA. OCHA is coordinating through the Emergency Response Preparedness Working Group (ERPWG).			

A. Situation analysis

Description of the disaster

According to the latest update from DMH, monsoon flooding has hit the lower part of Myanmar following heavy rainfall since the third week of July. The flood has been affecting thousands of households in Shan (East), Kayin, Mon, Rakhine, Mandalay and Tanintharyi. The Department of Meteorology and Hydrology (DMH) Myanmar reported that the low-pressure area over the North Bay of Bengal persists and will remain until October 2021.

Since, 30 June 2021, the DMH has been issuing flood advisory warnings and warnings regarding weather systems impacting major rivers and their water level. As weather systems come closer and more information on the expected impact becomes available, public warnings on flooding and landslides are being disseminated. Myanmar's DMH have reported heavy rain since 25 July 2021, with many areas affected by flood. Since mid-July, people and communities have been impacted by ongoing and recurring floods across Myanmar which requires local level response.

The monsoon weather system is strong and active, and on [24 August, DMH forecast](#) predicted water levels may exceed the danger level of major rivers and river dams such as Ayeyarwady River and Sittoung River that are currently in critical situation and could have the ability to impact the most at-risk areas. As of 25 August, the Thanlwin River has exceeded the danger zone (see in Annex forecast).¹ There are concerns that the weather system, fluvial floods, and flash floods could cause damage in communities across several regions, particularly in Shan (East), Kayin, Mon, Rakhine, Tanintharyi, Magway, Mandalay, Kachin, Sagaing and Chin regions. Some of these areas have experienced previous devastation by the [flood in 2015](#) and 2017, with response carried out via operation by [IFRC EA MDRMM006](#). It is estimated more than 1.6 million vulnerable people² are likely to be impacted by sessional monsoon related disasters.

In addition, Myanmar's coastline is susceptible to severe cyclones which form in the Bay of Bengal, which has two cyclone seasons: April to May and October to November. Considering this, it is crucial to support MRCS in its capacity to respond timely and effectively to concurrent disasters.

DMH forecasts that the monsoon season will continue until October with medium to heavy rainfall and it is likely that Myanmar will experience new floods, in addition to probable increased severity impacts. In order to better prepare for the potential impacts of the ongoing monsoon season and to allow the National Society to support local authorities' preventative evacuation and initiate immediate disaster response, MRCS together with the support from IFRC CD has requested an imminent crisis DREF allocation fund amount of CHF 150,000. This DREF will help MRCS to prepare and respond to the monsoon season and the high probability disasters that will impact the Myanmar people.

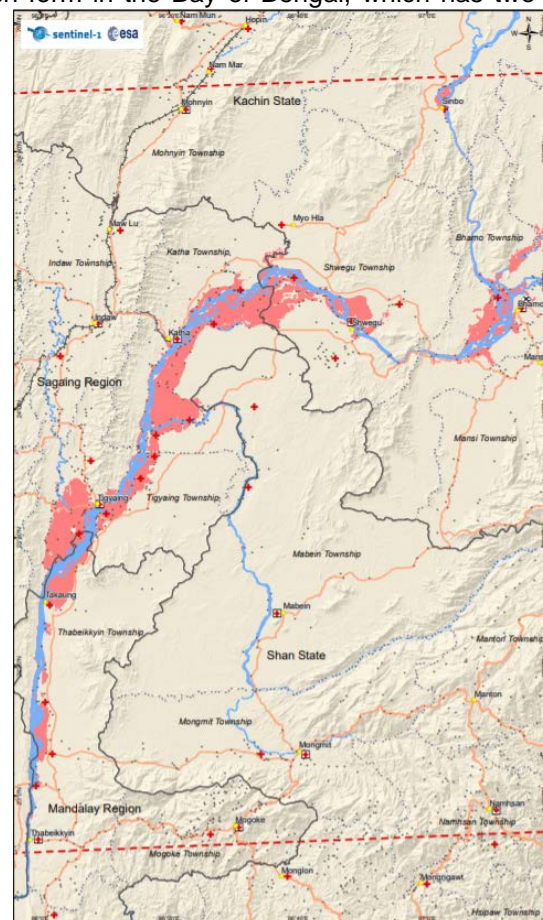
This plan, funded by DREF, details the actions to be taken in view of the upcoming increased rains expected through the procurement of relief items (stocks), mobilization of assets, and personnel (staff and volunteers), preventative evacuations, rapid needs assessments, and distribution of essential household and emergency shelter items if required. This Emergency Plan of Action (EPOA) and operations budget will be revised as the situation evolves and scale of disaster changes.

Compounding Risk Factors

1. Ongoing impacts of Civil Unrest in Myanmar since 1 February 2021.

This ongoing crisis has proliferated nationwide civil unrest with significant humanitarian implications.

- Basic services including transport, health and banking are affected.
- Cash based relief assistance is currently not feasible due to sustained disruptions to the banking sector.



Probable flooding areas in coming months. (Source: MIMU)

¹ <https://www.moezala.gov.mm/flood-bulletin%20>

² <https://themimu.info/vulnerability-dashboard>

- Internationally procured Disaster Preparedness (DP) stock items, require longer lead times due to limited border access and customs delays, linked primarily to the Myanmar civil unrest, but also more recently by COVID-19 pandemic.
2. Ongoing impacts of COVID-19 and a recent renewed outbreak at a national scale, resulting in reduced movement of both people and relief items.
 3. Reduced response capacity at a national scale. This situation places additional pressure and expectation on MRCS as a primary responder to people affected by seasonal disaster events from small, medium to large scale scenarios.

Summary of the current response

Overview of Host National Society Response Action

In accordance with the MRCS, the Emergency Operation Centre (EOC) is following standard operating procedures (SOP) of emergency response. The EOC unit monitors seasonal forecasting and daily weather updates with the DMH for dissemination to the EC, SG Office, MRCS' Departments, EOC page, EOC group, ERT groups, Region /State Red Cross Supervisory Committee and Branches within established timeframes. The EOC also manages daily data collection and consolidation to inform planning, as well as to prepare situational reports for response planning and coordination purposes.



MRCS Volunteers providing support in evacuating the affected people. (Photo: MRCS)

MRCS National Headquarters (NHQ) has begun advancing to fill the stock gap and relief funding to branches to ensure they are ready to respond through the delivery of services such as – first aid, search and rescue, distribution of food and drinking water, as well NFIs such as Hygiene Kits/Parcels, Family Kits, Dignity Kits, Mosquito Nets, Tarpaulin, Kitchen and Cooking Sets. MRCS branches in areas most likely to be affected are communicating with community volunteers. The emergency response team/centre is on heightened alert and coordinating the response with the Department of First Aid and Social Services. Considering the COVID-19 situation, MRCS is also distributing face masks and hand sanitizer in close coordination with most of the five affected regions/states.

Response to date:

- Total of 148 RCVs (22% female) have provided assistance to a total of 24 townships.
- 2,962 HHs (13,003 individual) evacuated to emergency centre.
- NFIs (Hygiene Kits/Parcels, Family Kits, Dignity Kits, Mosquito Nets, Tarpaulin, Kitchen and Cooking Sets) distributed to 550 HHs.

Overview of Red Cross Red Crescent Movement Actions in country

MRCS will lead the overall response operation by maintaining close coordination with in-country Movement partners and continues to provide updates. IFRC, the International Committee of the Red Cross (ICRC) and other Movement partners (American Red Cross, Danish Red Cross, German Red Cross, Finnish Red Cross, Norwegian Red Cross, Swedish Red Cross and Qatar Red Crescent) are present in the country.

MRCS host Movement coordination meetings and Operational meetings to share information with partners. IFRC Country Delegation (CD) is supporting MRCS in disseminating updates to Movement partners in-country and coordinating with the IFRC Asia Pacific Regional Office (APRO) in Kuala Lumpur in accordance with the IFRC Secretariat's Emergency Response Framework. As well as prepare for the current Monsoon season, incorporating updates to internal and external partners and support with pre-positioned stock and overall disaster preparedness activities.

IFRC CD and MRCS are also coordinating closely with ICRC to respond in conflict affected states of Rakhine, Chin, Kachin and Shan, focusing on the new conflict dynamics / humanitarian needs, as well as offering support to the scale up of the prevention and response to the third wave of COVID-19. Additional tripartite coordination mechanisms are in

place for Leadership, Security Cell and Communications. Tripartite Leadership meetings with MRCS, ICRC and IFRC are supporting coordination in key response areas and guiding strategic engagement in a highly complex operating environment.

Overview of other actors' actions in country

MRCS, along with IFRC is represented in the Humanitarian Country Team (HCT), cluster and the UN Myanmar Humanitarian Fund (MHF) Advisory Board and participates in key clusters. MRCS is co-lead of the Cash Working Group. Strategies for engagement with relevant Ministries under the new administration are under consideration, to ensure that critical and lifesaving activities can continue, while minimizing forms of engagement at risk of politicization.

As an auxiliary to the public authorities, MRCS maintains a strong relationship and collaboration with DMH, Township Disaster Management Committees, State and Regional authorities. Additionally, MRCS and IFRC engage on ongoing disaster preparedness coordination as members of the OCHA led Emergency Response Preparedness Working Group (ERP-WG). In late July 2021, MRCS presented to the ERP-WG on Monsoon preparedness capacity and response, incorporating COVID-19 operational provisions.

From late July to mid-August 2021, MRCS/IFRC shared a series of three partner updates on preparedness and response with topics such as the flood impacts including damaged assessment data, number of emergency evacuation centres, direct and immediate needs, water level reporting and information on risk areas, as well as MRCS response activities with number of people reached over the 2–3-week period. These updates incorporated detailed township level data consolidated by the MRCS EOC and the updates were shared with RCRC partners working in country, as well as OCHA and IFRC regional office in KL.

Needs analysis, targeting, scenario planning and risk assessment

Needs analysis

Based on previous experience of responding to similar flood or monsoon weather related disasters, it can be anticipated that river floods and flash floods are highly likely and will result in direct needs related to essential household and emergency shelter items, and water, sanitation and hygiene (WASH) support. The overall impact will be known once the flood or climatic disaster occur, and the needs are determined following the completion of the rapid needs assessments on the event.

The DMH is forecasting the monsoon season will continue until October and most likely severely impact the Shan (East), Tanintharyi, Magway, Mandalay, Kayin, Mon, Kachin, Sagaing, Chin regions. Statistics³ from these regions show over 1.6 million people are at risk of compounded disaster events such as floods and/or cyclones, which can result in further displacements, casualties, damage to housing and infrastructure, and loss of lives.

Table 1 below exhibits the multidimensional variables that influence the level of vulnerability of most regions that are or will likely to be impacted by future floods or any climatic disasters, including poverty incidence and shelter construction typologies. For instance, Shan state has a poverty incidence of 46%. Whereas Mandalay region has the highest number (i.e., 2,811,031) of houses with light roof/wall and hut/salvaged material, construction typologies most vulnerable to extreme weather events. Similarly, the average poverty incidence of nine most likely affected areas is 31.52%. Overall, the table presents how families from Shan, Sagaing, Mon, Mandalay, Kachin and Kayain states are most vulnerable and may need more shelter assistance along with WASH and Health services.

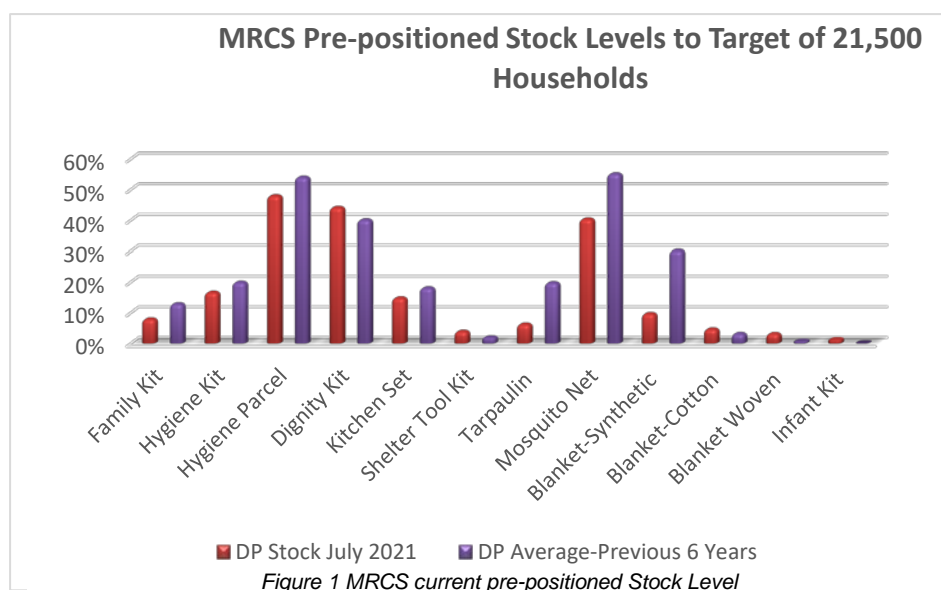
³ <https://themimu.info/vulnerability-dashboard>

Tab 1. Socioeconomic situation of areas where monsoon might hit.

States/Region	#HHs	#Popln	Children U5	Poverty incidence among pop %	Magnitude of poor ppl	Light roof/ light wall	Hut/salvage material	Owner/ being amortized
Kachin State	302 429	1 969 047	186 279	28,60 %	563 147	720 282	35 018	224 346
Kayin State	228 868	1 430 000	176 520	17,40 %	248 820	243 343	12 028	266 451
Chin State	91 121	478 801	65 940	73 %	349 525	590 934	1 138	80 752
Sagaing Region	993 926	5 325 350	476 750	15 %	798 803	936 985	29 506	1 022 070
Tanintharyi Region	287 034	1 426 426	144 880	33 %	470 721	208 580	12 445	217 950
Magway Region	838 365	6 165 723	1 057 178	27 %	1 664 745	796 116	24 795	850 749
Mandalay Region	1 369 559	6 168 225	530 820	27 %	1 665 421	1 110 834	34 776	1 114 411
Mon State	399 556	1 889 274	196 000	16,30 %	307 952	315 507	14 929	372 314
Shan State	1 123 111	6 477 000	569 301	46 %	3 005 328	762 317	14 522	1 019 384
Total	5 633 969	31 329 846	3 403 668	31.52%	9 074 461	5 684 898	179 157	5 168 427

Source: Department of Statistics, 2014 -2016?

In contrast, the current status of available Disaster Preparedness (DP) stocks across MRCS's 23 operational warehouses, is very low. MRCS aims to maintain a supply of relief items to assist 21,500 households (approximately 100,000 people) in the event of a disaster. Figure 1 below shows the current overall stock levels are less than 20% of the target pre-positioned stock levels that includes essential items such as tarpaulin (7%), Hygiene kits (17%) and Family kits and Shelter Tool Kits which contain items of shelter, clothing and hygiene, representing a comprehensive support package are at only 8%, far below comparative levels to previous year. The minimum operational requirements to meet the needs of those affected in case of disaster.



Consideration has been given to the other most recent operation that is affecting these areas and MRCS is responding with the support of IFRC: Civil Unrest and COVID-19 operation. This year's seasonal monsoon is particularly characterised by the significant number of landslides. The heavy rains and flooding caused multiple landslides across the region that accounted for most of the casualties with a dozen deaths recorded. MRCS, in collaboration with the authorities will prioritize efforts to mitigate this impact through preparedness and risk reduction interventions, as well as search and rescue services and providing assistance.

In considering the above factors and based on IFRC CD readiness plan to scale up the DP stocks, support the NS, and fill the gaps of relief items to meet the minimum target in case of disaster, two mobilization table have been opened, with one mobilization table open for DP stock specifically. While the mobilization table is in progress, this DREF will compliment support to NS in DP stocks focusing on tarpaulins, blankets, mosquito nets, Shelter tool kits and family kits. If no disaster occurs during the DREF time frame, the relief items will be prepositioned, in line with the imminent DREF procedure and policies of 'no regrets.

Targeting

MRCS aims to provide emergency assistance to a minimum of 10% of the affected population in all its response operations. In this current Monsoon season, widespread displacement linked to further floods and cyclones is likely to occur. Either event may result in additional displacement, in which case, responding Red Cross township branches will require timely access to key DP stock items including Family Kits, Tarpaulins, Mosquito Nets, Blankets, Hygiene Kits and Shelter tool Kits.

With this plan, the DP stock levels of MRCS will increase by at least 5% from current levels and reach to approximately 25%.

MRCS always ensures that its response and programmes are aligned with its own as well as IFRC's commitment to gender and diversity, focusing on and targeting women/child-headed households, pregnant or lactating women; persons with disability and chronic illness; families with persons with disability, elderly, families with children under five years old, families that have not received any/or sufficient assistance from the other organizations, as well as those belonging to socially vulnerable families and who lack relevant resources to cope with the basic humanitarian needs on their own.

This plan targets geographical areas in regions which have been identified as most likely to be affected by flood or climatic disaster. These include Kachin, Mon, Shan, Rakhine, Tanintharyi and Ayeywaddy. For cyclone impacts, Rakhine, Ayeywady and Tanintharyi are likely to be the most affected. Flood affected regions include Magway, Mandalay, Kayin Mon, Kachin, Sagaing, and Chin.

The impact of flood will depend on the targeting. It may be necessary to change the targeting and include other regions based on the affected population's level of vulnerability and coping capacity.

Estimated disaggregated data for population target

Category	Estimated % of target group	% Female	% Male
Young Children (under 5 years)	8%	4%	4%
Children (5-17yrs)	26%	13%	13%
Adults (18-49 yrs)	42%	22%	20%
Elderly (>50 yrs)	17%	9%	8%
People with disabilities	7%	4%	3%

Scenario planning

Scenario	Humanitarian consequence	Potential Response
<p>Floods</p> <p>During the months of September and October (late Monsoon period), the water levels of major rivers may exceed danger level.</p>	Medium	<p>Early Warning and information dissemination.</p> <p>Support for evacuation (in coordination with local agencies).</p>
<p>Rapid needs assessments confirm more extensive damage than anticipated, and the response required exceeds the resources available through the DREF.</p>	Medium	<p>Request 2nd allocation from DREF to expand the operation and support more immediate response activities; and mobilization of funds for basic support to self-recovery.</p>
<p>For late Monsoon Season, from 1 September, three Low Pressure Areas may form over the Bay of Bengal, and one may further intensify into the Depression. More weather disturbances will impact the same geographical areas affected by cyclone causing increased flooding and landslides.</p>	High	<p>Continuous monitoring of weather systems and contingency planning with MRCS chapters in the affected areas to aid activities that can be initiated as quickly as possible to lessen the impact of Cyclone hazards. Expand the operation under an Emergency Appeal with the</p>

		inclusion of early recovery activities over a longer period.
--	--	--

Operation Risk Assessment

Possible operational risks are shown below:

- There is potential for compounding climatic disasters, which could lead to flooding and increased risk of land and rockslides, exacerbating the humanitarian situation for the affected families. Such impacts could also exacerbate mobility and access if bridges and roads become blocked.
- The security risk posted by armed/non-state actors in the target affected areas are regarded as low to medium and is not expected to impact the implementation of the DREF operation or access by IFRC/MRCS personnel.
- The CDM and associated context is directly impacting on supplies of goods and materials, as well as posing a risk for financial transactions for payment of suppliers and financial transfers. This might delay or hamper the procurement of relief items resulting in further depleting critical stock levels.
- MRCS RCVs and staffs might get positive form COVID-19 while involving in operation such as distributing relief items in mass.

B. Operational strategy

Overall Operational objective:

This DREF operation aims to reduce the impact on communities living in risk areas that are most likely to be affected by the incoming flood and cyclone events during the monsoon season. Impact reductions will be achieved by increasing the MRCS pre-positioning stock capacity to respond to affected people's immediate humanitarian needs.

Summary of proposed strategy:

- Support local authorities' preventative evacuations from high-risk areas.
- Pre-positioning of essential shelter, WASH and health items - mobilized from central warehouse to strategic warehouse.
- Support the mobilization of frontliners: personnel to conduct search and rescue, first aid and other welfare services (e.g., Mental Health and Psychosocial Support (MHPSS), child friendly spaces and restoring family links (RFL)).
- Conduct rapid needs assessment to determine the revision of the operational strategy.
- Prevention of COVID-19 transmission among the affected population will be addressed through supplementary COVID kits including masks and hand sanitizers for affected people.

The operation will be underpinned by a commitment to quality programming that involves:

- Continuous monitor and in-depth assessments as well as analyses to inform the design and ongoing implementation of the operation.
- Safety of RCV and MDRC staff regarding the risk of COVID-19 is ensured through provision of personal protective equipment (PPE) and measures.
- Establishment of mechanisms and interconnectedness with ongoing Civil Unrest operation to enhance the RCVs and staff's capacity in response.
- Market assessments will be considered based on the needs and feasibility.
- Management and delivery of the programme will be informed by appropriate monitoring and evaluation.

Human resources

All relief activities will be implemented by utilizing existing staff and Red Cross volunteers and NDRT from other branches, if they are needed. IFRC CD will support MRCS in providing technical and support service staff as required to ensure accountability and compliance with regard to the operation. In addition, provision has been made for IFRC rapid response personnel to provide surge support to the IFRC CO if required in future.

Communications

MRCS communications team will ensure that Red Cross Red Crescent response efforts are effectively communicated and visible amongst its key public audiences, and in a timely manner. MRCS staff and volunteers across the country are actively communicating through its own networks.

A composite team of MRCS, IFRC and ICRC communications officers will work together to ensure regular communication. In order to ensure the correct positioning of the National Society, the communication strategy should ensure the production of the following products:

- Key messages
- Reactive lines
- Documentation of the response action

APRO is supporting and will support on various activities aimed to inform the public, the national and international media on the situation, needs on the ground and on the humanitarian response.

Community Engagement and Accountability (CEA)

Community engagement and accountability and feedback/response mechanisms will be integrated into the operation to ensure that affected populations have direct access to information on the nature and scope of services provided by MRCS, together with processes that will enable community participation and ease of providing feedback and giving responses. A community committee will be formed to support community engagement as they are direct representatives from their own communities. The community can directly provide feedback to members, which are essential for continuous improvements of the programme implementation.

Planning, monitoring, evaluation, & reporting (PMER)

MRCS will oversee all monitoring, evaluation and reporting aspects of the DREF. IFRC through its Country Delegation will also provide technical assistance to ensure the effective implementation. A final report will be published after the end of the operation. Review and lessons learnt workshop will be organized by IFRC and MRCS to reflect on the DREF request and implementation challenges to take stock of that for future responses.

MRCS State/Region Red Cross Supervisory Committee (RCSC) engage in weekly review meetings with the MRCS national headquarters Secretary General Unit (SGU).

Logistics and supply chain management

Logistics activities aim to effectively manage the supply chain, including procurement, customs clearance, fleet, storage and transport to distribution sites in accordance with the operation's requirements and aligned to IFRC's logistics standards, processes and procedures. Logistics support for this operation is being provided through the strong capacity of the MRCS logistics built over the last years, supported by an experienced IFRC CD logistics team.

The main supply chain strategy to meet immediate operational needs is to procure and relocate required relief items, including blankets, tarpaulins, mosquito nets, shelter tool kits and family kits. IFRC CD is supporting MRCS to mobilize, and transport needed equipment and relief items to the affected areas. Items with the local specification to meet local cultural context will procure locally i.e., Shelter tool kits and family kits that will meet the IFRC standard and international procurement will be done by IFRC Global Humanitarian Services & Supply Chain Management, Asia Pacific (GHS&SCM-AP) Unit based in Kuala Lumpur Malaysia. Local procurement will be done by the Logistics Department of MRCS with the support of IFRC CD. Based on pre-market assessment that was carried out by WFP, IFRC and other external partners, the mentioned items for this operation such as shelter tool kits and family kits will be procured locally, and it is viable to do so. Any required additional technical support to the procurement will be provided by the IFRC GHS&SCM – AP Unit in Kuala Lumpur.

Logistics support for this operation may be provided through the regional office GHS and SCM-Ap unit to strengthen the capacity of the MRCS logistics and supported by an experienced IFRC CD logistics team.

Existing warehouse capacity of the MRCS is enough to meet planned operational needs and at this stage there is no need to rent additional warehouse space. IFRC CD can extend its fleet support by making its vehicles available for this operation as and if required. IFRC GHS&SCM-AP unit will provide technical support to MRCS and IFRC CD as needed.

However, given the current challenges to the banking and finance as well as the transport sector, payment of suppliers and transport of goods are key planning challenges which may delay the procurement processes. IFRC logistics and finance teams in country are working closely with their MRCS counterparts in actively planning to identify and address these challenges in delivering the emergency response. The logistic cluster is not activated, though it is carrying out the normal practice coordination and analysis meeting with partners such as UNOCHA, UN Security Operations Centre (SOC), HCT, UNICEF, Save the Children, Oxfam and INGO platform.

Security

The MRCS security framework will apply to all staff and volunteers throughout the DREF operation duration. All MRCS staff and branch volunteers are encouraged and will be supported to get orientation on Stay Safe course and Seven Fundamental Principles. MRCS is encouraged to remind all actors more often on RCRC role and principles, especially on Neutrality, Impartiality and Humanitarian Action (NIHA). MRCS is encouraged to maintain communication with all stakeholders with a goal to ensure high level of acceptance and access. Staff and volunteers are to be aware of the security status and briefed on reactions in emergency.

IFRC and ICRC are monitoring the security context through the provision of technical safety and security input and support MRCS, as needed, during the humanitarian response. IFRC staff in the Country is under heightened security measures according to the CD (Country Delegation) security plans. Any required additional technical support will be provided through Regional/Global Security Unit.

In case of need IFRC personnel including surge support and integrated PNS to be deployed to the area, the existing IFRC security framework will apply, (country security plan, including security regulations, contingency plans for medical emergencies, relocation and critical incident management management). All staff and volunteers must complete the IFRC Stay Safe e-learning courses, i.e., Stay Safe Personal Security, Stay Safe Security Management and Stay Safe Volunteer Security online training.

Duty of Care

Teams will adhere and practice all precautionary measures outlined in the safe and best practice and similar response guide for Disaster response. The MRCS volunteers will be insured. The volunteers will also have access to psychosocial support and the security of the volunteers will always be a priority throughout the operation. A specific supervision and PSS mechanisms for RCV is establish in each township under the EC member of branch where NHQ Heath department is leading the services as well as MRCS SG unit monitor the situation. The operation will be delivered in a manner that minimizes the risk of COVID-19 transmission.

C. Detailed Operational Plan



Shelter

People targeted: 6,750 people (1,500 HH)

Male: 3,252

Female: 3,497

Requirements (CHF): 133,321.34

Sector	Need Analysis	Population to be assisted (the number, location etc.)
Shelter	Based on previous experience of responding to similar flood and cyclone; essential household items may be lost; people's homes damaged or destroyed.	Essential household items including tarpaulin, blankets and family kits ⁴ will be pre-positioned ready for immediate distribution (if required) to 1,500 HHs 1500 STK (Shelter tool kit) will be pre-positioned ready for immediate distribution (if required).

Programme standards/benchmarks: Programme standards/benchmarks: Sphere Standards - Section 7 - Shelter and Settlements

P&B Output Code	Shelter Outcome 1: Communities in disaster and crisis affected areas restore and strengthen their safety, well-being and longer-term recovery through shelter and settlement solutions	1500 HHs targeted with shelter and settlement solution in the affected area															
	Shelter Output 1.1: Shelter and settlements and basic household items assistance is provided to the affected families.	1500 households targeted with essential household items															
Activities planned	Month	1	2	3	4												
AP005	Pre-position essential household items and emergency shelter items in areas most likely to be affected		x	x													
AP005	Coordination with relevant sectors, the government, and other stakeholders	x	x	x													
AP005	Based on risk-information, mobilize and stock essential household items and emergency shelter assistance to areas most likely to be affected	X	X	X													
AP005	Market assessment to identify availability/access to shelter and household items	X															

⁴⁴ Items that contained inside family kit are: Male and female clothes, Boys and girls school uniform, mosquito nets, 2 blankets, 2 traps, Rope, Kitchen Set and a box.

AP005	Pre-positioning of Trap	X	X	X														
AP005	Pre-position of Blankets	X	X	X														
AP005	Pre-position of STK	X	X	X														
AP005	Pre-position of Family Kits	X	X	X														
AP005	Logistics Cost (Hauling, fleet, handling cost, custom cost etc)	X	X	X														
AP005	Evaluation of the support provided				X													



Health

People targeted: 6,750 people (1,500 HH)

Male: 3252

Female: 3497

Requirements (CHF): 3,150

Sector	Need analysis	Assistance planned and population to be assisted
Health	Based on previous experience of responding to similar flood and cyclone caused by associated heavy rainfall. Potential flooding can increase the risk of water and vector borne diseases, including dengue and malaria. It is anticipated that insecticide-treated mosquito nets will be required as a preventative measure. - Additionally, impacts could result in loss of life, leaving people in traumatized.	Provide rapid medical management of injuries and diseases through MRCS branches and Welfare Desks – at evacuation centres. 1500 families will be provided with mosquito nets (part of the standard non-food item package)

Programme standards/benchmarks: Sphere Standards, Psychosocial Support in Emergencies Guidelines, and UNICEF/WHO Standards as per local MOH guidelines

P&B Output Code	Health Outcome 4: Transmission of diseases of epidemic potential is reduced																<i>7,500 people reached through NS emergency health management programmes</i>			
	Health Output 4.2: Vector-borne diseases are prevented																<i>A health assessment carried (part of RNA)</i>			
	Activities planned	Month	1	2	3	4	5	6	7	8	9	10	11	12	13	14	15	16		

AP021	Pre-position mosquito nets in the areas most likely to be affected	x	x	x															
-------	--	---	---	---	--	--	--	--	--	--	--	--	--	--	--	--	--	--	--

Strategies for Implementation

Requirements (CHF):13,663

P&B Output Code	Output S2.1.3: NS compliance with Principles and Rules for Humanitarian Assistance is improved	<i>DREF procedures are applied during the implementation of the operation</i>																	
	Activities planned	Month	1	2	3	4													
AP049	Ensure that the Principles and Rules, Emergency Response Framework and Emergency Appeal and DREF procedures are well understood and applied	x	x	x															
P&B Output Code	Output S2.1.6: Coordinating role of the IFRC within the international humanitarian system is enhanced	<i>A coordinated and strategic response plan according to humanitarian minimum standards is adopted by actors</i>																	
	Activities planned	Month	1	2	3	4													
AP049	Support advocacy on behalf of the shelter cluster	x	x	x															
	Outcome S3.1: The IFRC secretariat, together with National Societies uses their unique position to influence decisions at local, national and international levels that affect the most vulnerable	<i>IFRC and MRCS participate in local, national and international dialogues/meetings</i>																	
	Output S3.1.1: IFRC and NS are visible, trusted and effective advocates on humanitarian issues	<i># of communications materials produced (social media, media articles, interviews, etc.) to share information about the operation.</i>																	
	Activities planned	Month	1	2	3	4													
AP053	Communications work of MRCS is supported by the IFRC CD and APRO	x	x	x	x														
P&B Output Code	Output S3.1.2: IFRC produces high-quality research and evaluation that informs advocacy, resource mobilization and programming.	<i># of post-distribution visits to affected communities.</i>																	
	Activities planned	Month	1	2	3	4													
AP055	Post-distribution monitoring visits to affected communities (if required)	x	x	x	x														
AP055	A Lesson learned workshop will be conducted				x														
P&B Output Code	Outcome S4.1: The IFRC enhances its effectiveness, credibility and accountability	<i>Effective performance of staff supported by HR procedures</i>																	
P&B	Output S4.1.4: Staff security is prioritised in all IFRC activities	<i>Staff security is prioritised in all IFRC activities.</i>																	

Output Code	Activities planned	Month	1	2	3	4												
AP066	IFRC country office security focal person provides updates to MRCS and coordinates with PNSs and the ICRC		x	x	x	x												

Funding Requirements

International Federation of Red Cross and Red Crescent Societies

*all amounts in
Swiss Francs
(CHF)*

DREF OPERATION

MDRMM017 Myanmar - Flood

28/8/2021

Budget by Resource

Budget Group	Budget
Shelter - Relief	79,011
Clothing & Textiles	9,900
Other Supplies & Services	35,161
Relief items, Construction, Supplies	124,071
Distribution & Monitoring	10,000
Transport & Vehicles Costs	3,000
Logistics, Transport & Storage	13,000
National Society Staff	1,200
Volunteers	1,200
Personnel	2,400
Workshops & Training	1,200
Workshops & Training	1,200
Financial Charges	300
General Expenditure	300
DIRECT COSTS	140,971
INDIRECT COSTS	9,163
TOTAL BUDGET	150,134

Reference documents



Click here for:

- Previous Appeals and updates
- Emergency Plan of Action (EPoA)

For further information, specifically related to this operation please contact:

In Myanmar Red Cross Society

- Prof. Dr. Htin Zaw Soe, secretary general; phone: +95 9 973 101 474; email: htinzawsoe@redcross.org.mm
- Daw San Maw, Director of DM department; phone: +95 9 9771 5665; email: sansanmaw@redcross.org.mm

In IFRC Asia Pacific Regional Office, Kuala Lumpur

- Gwendolyn Pang, Deputy regional director; email: Gwendolyn.pang@ifrc.org
- Jessica Lee Letch, Head of Disaster, Climate and Crisis Unit (acting), email: jessica.letch@ifrc.org
- Tarsilla Lehmann, Operations coordinator; email: opscoord.southeastas@ifrc.org
- Siokkun Jang, logistics manager, regional logistics unit; email: siokkun.jang@ifrc.org
- Antony Balmain, regional communications manager; email: antony.balmain@ifrc.org

In the IFRC Myanmar Country Office

- Joy Singhal, Head of Country office; email: Joy.Singhal@ifrc.org
- Katherine Anne Richardson Bunbury; acting project coordinator; email: katherine.bunbury@ifrc.org
- Rajeev K.C., Disaster Risk Management Delegate, Rajeev.kc@ifrc.org

In IFRC Geneva

- Christina Duschl, senior officer, operations coordination; email: christina.duschl@ifrc.org
- Karla Morizzo, senior DREF officer; email: karla.morizzo@ifrc.org
- Eszter Matyeka, senior officer, DREF; email: eszter.matyeka@ifrc.org

For Performance and Accountability support (planning, monitoring, evaluation and reporting enquiries)

- Fadzli Saari, Acting PMER Manager; Fadzli.saari@ifrc.org

How we work

All IFRC assistance seeks to adhere to the **Code of Conduct** for the International Red Cross and Red Crescent Movement and Non-Governmental Organizations (NGO's) in Disaster Relief and the **Humanitarian Charter and Minimum Standards in Humanitarian Response (Sphere)** in delivering assistance to the most vulnerable. The IFRC's vision is to inspire, **encourage, facilitate and promote at all times all forms of humanitarian activities** by National Societies, with a view to **preventing and alleviating human suffering**, and thereby contributing to the maintenance and promotion of human dignity and peace in the world.

The IFRC's work is guided by Strategy 2020 which puts forward three strategic aims:



Save lives,
protect livelihoods,
and strengthen recovery
from disaster and crises.

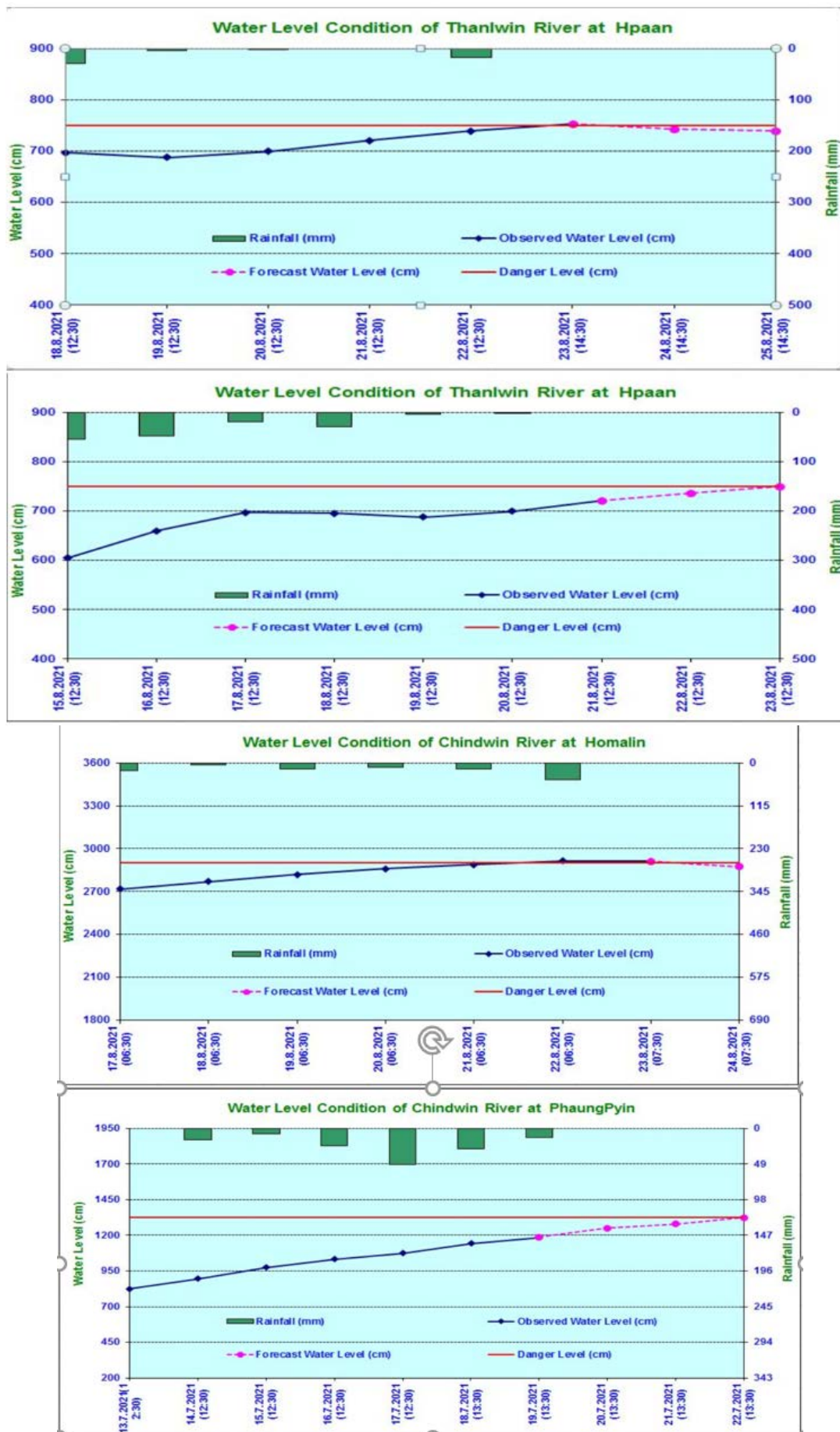


Enable **healthy**
and **safe** living.



Promote social inclusion
and a culture of
non-violence and **peace.**

Annex 1. Major rivers water levels are exceeding the danger level and others are flowing the paths. For more detail refer to [River water level and warning](#)



Map of the affected areas

