

www.ifrc.org  
Saving lives,  
changing minds.

# Emergency appeal operation update

## Sri Lanka: Support for internally displaced people

 International Federation  
of Red Cross and Red Crescent Societies

**Emergency appeal n° MDRLK002**  
**Glide n° FL-2010-000253-LKA**  
**Operation update n°13**  
**30 June 2013**

**Period covered by this Ops Update:**  
1 December 2012 to 31 May 2013

**Appeal target (current):** CHF 23.3 million.

**Appeal coverage:** 45 per cent based on current revised appeal budget.

[<click here to go directly to the updated donor response report, or here to link to contact details >](#)

#### Appeal history:

- [Emergency Appeal](#): This was initially launched on 12 April 2010 for CHF 3.6 million as a preliminary basis to support 5,000 families of internally displaced persons (IDPs) in Sri Lanka for 24 months.
- [Revised Emergency Appeal](#): This was launched on 8 July 2011 for CHF 6.1 million to support to assist 7,000 families (35,000 people) for 36 months.
- [2<sup>nd</sup> Revised Emergency Appeal](#): This was launched on 20 September 2012 for CHF 23.3 million in cash, kind, or services to support to assist at least 20,000 families (100,000 people) for 67 months with expected completion by end of October 2015. A Final Report will be made available by January 2016 (three months after the end of the operation). The revised appeal looking forward to;
  - a. **Fulfil existing funding gap** - In order to be in line with the Government directive, Red Cross Post Conflict Recovery Programme (RC PCR) increased the total value of the housing grant per beneficiary family from LKR 360,000 to LKR 550,000 while keeping the number of instalments and works to be carried unchanged.
  - b. **Provide same integrated package to the families under [Indian Housing project \(IHP\)](#)** – The International Federation of Red Cross and Red Crescent Societies (IFRC), with Sri Lanka Red Cross Society (SLRCS) as its implementing partner, is executing construction and repair of 16,800 houses with water and sanitation (WatSan) facilities under IHP funded by the Government of India (GoI). Additional funds are required to ensure the same integrated package under the standardised RC PCR to these 16,800 families.
  - c. **Fulfil unmet needs** – After three years since the end of the conflict, there remains a huge gap and unmet needs of the communities who are being resettled, mainly shelter, water and sanitation, health and care, and community infrastructure.
  - d. **Extend present software programme** – The current activities with civil society through the existing



A newly constructed house in Irranai Illupaikulum, Madu, Mannar under Indian Housing Project. **Photo:** Mukesh Singh/IFRC.

'Volunteers in Action (VIA)' programme is being extended to all districts in the north.

### Summary:

Red Cross Post Conflict Recovery Programme (RC PCRP) in Sri Lanka, which is being implemented by Sri Lanka Red Cross Society (SLRCS) since April 2010, having a partnership with International Federation of Red Cross and Red Crescent Societies (IFRC) and other Movement and non-Movement partners. It primarily supports people who have been displaced due to the conflict and resettled at present. The entire programme follows the owner-driven approach and direct-beneficiary cash transfer mechanism, in order to empower beneficiaries and improve the sense of community ownership. Construction of new houses and repairing damaged houses is the key constituent of the programme, while other components (community infrastructure, water and sanitation, livelihoods, health care, disaster management and organizational development) complement the sustainability and the resilience of the community. With the latest revision of the Emergency Appeal, number of benefitting families increased significantly, targeting 20,000 families in the north by strengthening the shelter and livelihood components and socio-economic infrastructure in a more efficient and effective manner, while adhering to the same framework of the existing operation.

### Our Partners:

The programme is an integrated movement intervention with overall coordination of IFRC and implemented by SLRCS with the support of Red Cross (table 2) and non-Movement partners.

**Table 1: Summary of Supports from Red Cross partners**

Type of support	Partners
Multilateral	Australian Red Cross (ARC), Canadian Red Cross (CRC), Hong Kong branch of the Red Cross Society of China, Irish Red Cross (IRC), Korean Red Cross, Monaco Red Cross and United Arab Emirates Red Crescent
Bilateral	Australian Red Cross (ARC), German Red Cross (GRC), Japanese Red Cross Society (JRCS), Norwegian Red Cross (NRC) and Taiwan Red Cross Organization (TRCO)

Meanwhile the Government of India (GoI) is the major donor to the programme from July 2012. All the Movement partners are supporting all the components of RC PCRP, while GoI is supporting only shelter and water and sanitation (WatSan) components. SLRCS and IFRC are advocating to partners such as International Committee of Red Cross (ICRC), GRC, CRC, NRC, JRCS and TRCO to have joint plans for core programmes.

## The situation

For nearly three decades, Sri Lanka has been scarred by a bitter war and in May 2009, the Government of Sri Lanka announced a decisive military victory over the Liberation Tigers of Tamil Eelam (LTTE or Tamil Tigers). All the districts of the Northern Province affected by the conflict, the entire Kilinochchi and Mullaitivu districts were fully deserted displacing all the inhabitants and there were partial displacements in Mannar, Vavuniya and Jaffna districts. Between 2006 and February 2009, over 281,000 people became internally displaced. This was in addition to over 214,000 people who had been displaced before 2006, meaning that over half a million people had been displaced by the conflict. As a result, the situation in the north of Sri Lanka was critical for the affected people at the end of the war, who lost almost everything including accessibility and availability of shelter, water and sanitation, health care, livelihood and other basic services and facilities.

Over the past four years, the government and partners have committed significant resources to help former IDPs return to their home areas and rebuild their lives post-displacement. The Joint Humanitarian and Early Recovery Update ([JH-ERU](#))<sup>1</sup> (November - December 2012, report no. 48) reveals, by the end of December 2012, 467,533

<sup>1</sup> This report indicates the UN and NGO partner response to continuing humanitarian needs and early recovery concerns, in support to the Sri Lankan government's efforts to rebuild the former conflict-affected regions. Activities show progress towards the sectoral priorities and goals described in the 2011 joint plan for assistance.

people (140,725 families) had returned to the Northern Province. This figure includes 267,865 people (80,292 families) displaced after April 2008 and 199,668 people (55,273 families) displaced before April 2008. With the closure of Menik Farm IDP camp in Vavuniya district, there are no 'new IDPs' living in camps in the country. An additional 5,785 IDPs (1,592 families) from the protracted or long-term caseload, displaced prior to April 2008, remained in welfare centres in Jaffna and Vavuniya districts.

### Need, government plan and the gap of assistance

The challenges in post conflict rebuilding in poverty reduction, provide education and employment opportunities, improve health and nutrition, livelihood support and infrastructure development are still remain at a significant level. The Joint Plan of Assistance (JPA) 2011 provided a framework for meeting immediate needs while linking interventions to the early- and medium-term recovery efforts, including the priorities of building shelters and homes, supporting agriculture, food security and livelihood recovery. Then in 2012, [Joint Plan for Assistance Northern Province 2012](#) had been done continuing the strong partnerships made between the Government, UN, I/NGOs and IOs during the 2011. Building upon good practices and lessons learned, discussions have taken place between the Presidential Task Force for Resettlement, Development and Security in the Northern Province (PTF), and respective stakeholders to determine the most urgent areas per sector for humanitarian intervention in 2012.

Government and humanitarian actors' estimation of the total houses in need of reconstruction is 143,268 in the north of Sri Lanka (table 2), excluding more than 100,000 families scheduled for return from India and other countries over the next years.

**Table 2: Distribution of houses damaged and progress of the shelter assistance in the Northern Province**

	District	Total houses Damaged	Commitment				Total Outstanding
			New	Repair	Core house	Total	
1	Vavuniya	14,640	5,870	284	89	6,243	8,397
2	Killinochchi	34,445	12,957	3,084	386	16,427	18,018
3	Mullaithivu	29,804	10,144	3,242	187	13,573	16,231
4	Mannar	25,071	7,133	233	100	7,466	17,605
5	Jaffna	39,308	10,202	33	159	10,394	28,914
	<b>Total</b>	<b>143,268</b>	<b>46,306</b>	<b>6,876</b>	<b>921</b>	<b>54,103</b>	<b>89,165</b>

*Data Compiled by: UN - HABITAT (Data source: Directors Planning, Directors - NEHRP and Respective agencies)*

Out of the total commitment of 54,103 houses by donors on housing assistance, 32, 441 houses had completed by now, 14, 010 in progress and the rest to be started. This includes 17,904 houses started with GoI funds and the rest of 21,096 houses (of the total of 39,000 houses) to be started by the four implementing agencies, including IFRC. The coverage by donors on shelters is still very low - with committed funding for building or repairing sufficient only for 75,199 (52.5 per cent) houses only (54,103 + 21,096), which is nearly a half of the need.

Refer to the [Revised Emergency Appeal](#) for more information.

The 2012 Joint Plan of Assistance for the Northern Province (JPA) remains underfunded at US\$ 33 million, or 23 per cent of the total request of US\$ 147 million for the humanitarian response in the Northern Province. The total humanitarian funds received during 2012 are US\$53.6 million with US\$20.4 million received outside the JPA (Refer to the [Financial Tracking Service](#) for more details). With this situation all the actors involved in the humanitarian assistance face a huge funding gap to assist those people in need.

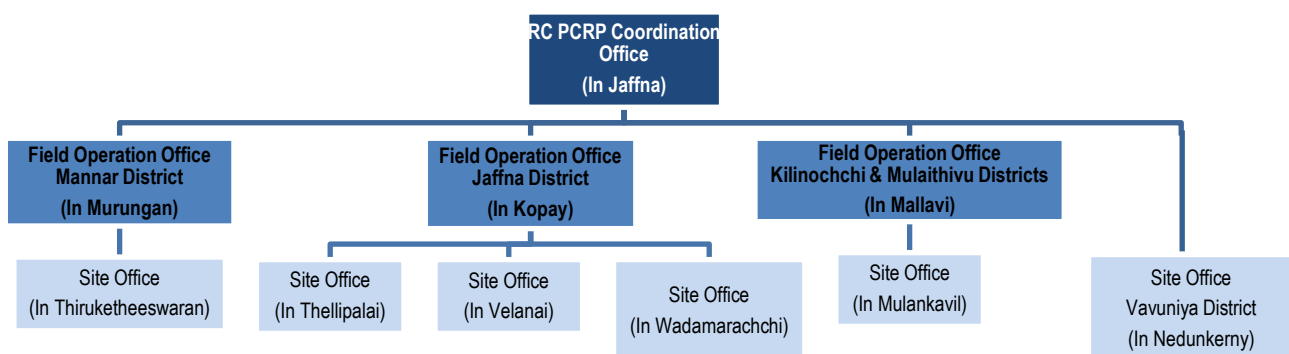
## Coordination and partnerships

An early recovery coordination mechanism led by the government has been in place since the end of the war and was further strengthened and streamlined through the establishing of PTF for national recovery

coordination. SLRCS, mandated as an auxiliary to government in humanitarian assistance, does coordination work at all levels with government authorities. The entire programme is carrying out assessments and consultations with the government authorities and representatives such as Government Agent, District Secretary, and Grama Niladhari. The PTF adopted the 'who does what where ([3W](#)) online system' as the primary monitoring tool to track the progress. Following the launch of the JPA in 2011, this 3W tool is being used as an effective monitoring tool to track progress of the humanitarian and early recovery efforts across the Northern region.

RC PCRP is implemented by SLRCS with the overall coordination of IFRC, as an integrated programme with the support of Red Cross and non Red Cross partners (please refer to the summary section above). RC PCRP coordination office was established in Vavuniya in July 2010 and then moved to Jaffna in April 2013, from where the IFRC and SLRCS are operating at present. Field staff deployed in project sites and is based in three field operation offices and six site offices (Thiruketheeswaran and Velanai offices are in process) covering entire Northern Province for efficient and effective implementation of the programme.

**Figure 1: RC PCRP Office structure at present**



Existing Rural Development Societies (RDS) of the villages takes the leading role in community level, organizing community meetings and activities, to facilitate the programme staff for field level activities. RDSs are being engaged in the process from the beginning to end in each and every step of the implementation. They are the community representatives, with whom the needs, issues and concerns of the communities are discussed. Transparent and effective relationship and coordination are maintained with government authorities from the ground to national level. Furthermore, the programme shares the experiences and coordinates with other partners at divisional and district level cluster meeting and other forums.

## Red Cross Post-Conflict Recovery Programme

### Overview

The RC PCRP is implemented as an integrated programme to support resettling communities within a comprehensive package of shelter, water and sanitation, livelihood, health and care, disaster management, community infrastructure and organizational development. Construction of new houses following the owner-driven approach is the key constitute of the programme, while other components complement the sustainability and the resilience of the community. RC PCRP is advocating for the most vulnerable in their rebuilding process. Moreover, it provides complementary assistance to the government and other agencies' ongoing efforts to the sustainable rehabilitation and reconstruction in the north of Sri Lanka, and ensures strong communication and coordination with other stakeholders to minimize the risk of both duplication and gaps.

At the same time, while supporting 2,946 families with RCRC funds (1,347 through Emergency Appeal funds), the programme expanded further to cater to the increasing needs of the resettling communities. RC PCRP entered a new partnership with the Government of India (GoI) from 13 July 2012, and receiving funding for construction of 14,000 new houses and repair of 2,800 houses (total of 16,800). This component is referred as [Indian Housing Project \(IHP\)](#) of RC PCRP. With that, IFRC is currently one of four implementing agencies selected by the GoI to construct and repair 39,000 housing units in the Northern Province of Sri Lanka; part of the overall commitment of 50,000 houses announced by the GoI in June 2010. This Project aims to contribute to the sustainable rehabilitation of Internally Displaced Persons (IDPs) and reconstruction in the Northern and Eastern Provinces of Sri Lanka. It primarily supports people who have been displaced as a result of the conflict to re-build their houses.

Through this additional assistance a total of 19,746<sup>2</sup> families (2,946 families with Red Cross support and 16,800 families with GoI support) get assistance to build their homes, which is 13.8 per cent of the total need of 143,268 houses. With the demand for improved housing, the programme is expected to expand further for rebuilding process upon available funding.

Since the inception of the programme, Kilinochchi and Mullaitivu branches of the SLRCS have been re-established, electing their governance and deploying key staff. The evolving RC PCRP has been able to attract youth and professionals of the area helping to re-establish a strong Red Cross volunteer network. To strengthen the volunteer network and provide integrated assistance to the community a programme called 'Volunteers in Action (VIA)' is introduced. VIA programme, is an innovative approach combining the software components of the programme to develop multi-skilled volunteers, and aims to harness volunteer action for the holistic development of the communities. The VIA programme launched its activities in Kilinochchi and Mullaitivu at the start, and now expanded in to entire northern province for the delivery of core programmes, while mobilizing volunteers and communities. Fifty volunteers from each of Killinochchi and Mullaitivu branches were trained as 'multi skilled volunteers' through VIA programme from March 2011 to May 2013. These volunteers plans, organizes and implements the branch activities with the communities (community services, first aid services, hygiene promotion activities, PSP activities, celebrate international days).

A total of six community assessment workshops conducted, three each in Kilinochchi and Mullaitivu districts and subsequently, integrated community plans (health, livelihood, WatSan and infrastructure) were developed for those areas (Kilinochchi – one year, Mullaitivu - six months). Those are being implemented by the volunteers of Kilinochchi and Mullaitivu branches, with the support of VIA programme of PCRP.

## Programme monitoring and evaluation

A base line survey is carried out at the initial stage of the programme, which is a very important tool to measure the outcome of the interventions. The programme will administer the same questionnaire with the beneficiary families, three months after the completion as an end line survey.

The operation management team maintains and implements regular monitoring mainly through an electronic database to follow all the vital milestones of the programme and putting in transparency and accountability to the programme. Operational implementation and coordination meetings take place periodically as planned, including monthly and quarterly meetings. IFRC monitoring system, IFRC monthly management update, PCRP quarterly update, periodical operations updates, biweekly and quarterly reports of IHP provide enough support to the monitoring mechanism. Additionally, IFRC receive reports from the field and undertake regular visits and/or spot-checks. This helps to identify and, where possible and necessary, resolve any problems. Regular and ad hoc reports provide necessary information in relation to the progress of the operation; and any changes in the situation during the reporting period and any particular problem, constraint or unmet need. Technical support and quality assurance is supported by programme partners within the management team and with technical departments of national headquarters and PNS teams in Colombo and field. IFRC delegation supported by Asia

<sup>2</sup> Of the total 19,764 houses, the IFRC will support through this Emergency Appeal 18,147 families with shelter assistance.

Pacific disaster management unit ensures the implementation of operational reviews and evaluation as set in the plan of action.

An overall external evaluation will be commissioned after final completion of the programme. Resources needed would be shared between all partners involved. The wide-scale evaluation is vital at the end of the operation to ensure institutional learning.

## Progress towards planned outcomes

Shelter	
<b>Outcome: 18,159 affected families (90,800 beneficiaries) in northern districts have safe and adequate shelter and settlement solutions through the provision of cash grants and guidance on improved building techniques.</b>	
Outputs (expected results)	Activities planned
Repair and constructed permanent houses by engaging beneficiaries in the construction process.	<ul style="list-style-type: none"> <li>• Selection of sites and beneficiaries.</li> <li>• Strengthening of community based organizations to involve in addressing community issues and resolving constraints.</li> <li>• Setting up contract mechanisms and instalment systems.</li> <li>• Initiate 18,159 house constructions/repairs.</li> <li>• Execution of community contracts for the construction of community infrastructure.</li> <li>• Monitor and technical verification of progress.</li> </ul>

### Progress:

**Implementation of the construction of 1,355 housing units and the repairing of 4 housing units with emergency appeal fund (multilateral funding)**

During the reporting period, 378 houses were completed, totalling 826 houses (60.8 per cent of the total). Some 521 houses are in progress and 12 houses were not started in Vavuniya North under HKRC fund, since those families given by the government are not resettled until now. With that emergency appeal supports 1,347 families (1,359 deducts 12) under the shelter component at the moment.

**Table 3: Summary of distribution of shelter support and its progress with the Emergency Appeal fund**

District	DS Division	No. of houses			Progress since appeal			No. of houses completed during reporting period
		New	Repairs	Total	Completed	Ongoing	Not Started	
Kilinochchi	Karachchi	300	0	300	280	20	0	7
	Poonakary	300	0	300	131	169	0	102
Jaffna	Maruthankerny	485	4	489	318	171	0	177
	Kareinagar	70	0	70	44	26	0	39
Vavuniya	Vavuniya North	200	0	200	53	135	12	53
<b>TOTAL</b>		<b>1,355</b>	<b>4</b>	<b>1,359</b>	<b>826</b>	<b>521</b>	<b>12<sup>3</sup></b>	<b>378</b>

**Implementation of the construction of 1,291 housing units and the repairing of 326 housing units by the Red Cross Red Crescent Movement (bilateral funding)**

In addition to the houses funded multilaterally by IFRC Emergency Appeal, GRC, TRCO, JRCS and NRC are supporting bilaterally 1,617 families to rebuild or repair their houses. 18 of the total houses were discontinued in Mullaitivu and Mannar since the families were unable to complete their houses during the project period due to some issues beyond the programme limits. With that the total under bilateral support is 1,599 families at present.

<sup>3</sup>Families in the government list are not permanently resettled in the village so far and now due to time limits the number of beneficiary has been limited to 188 only.

**Table 4: Summary of distribution of shelter support and its progress with the RCRC fund**

District	DS Division	RCRC Donor	No. of houses			Progress since appeal			Present status
			New	Repairs	Total	Completed	Ongoing	Not Completed	
Kilinochchi	Karachchi	GRC	300	0	300	300	0	0	Completed
Mullaithivu	Maritemapattu	GRC	299	326	625	621	0	4	Completed
		TRCO	58	0	58	32	26	0	Ongoing
	Oddusuddan	GRC	150	0	150	41	109	0	Ongoing
		JRCS	240	0	240	204	36	0	Ongoing
	Welioya	GRC	50	0	50	13	37	0	Ongoing
Mannar	Madu	NRC	194	0	194	180	0	14	Completed
<b>TOTAL</b>			<b>1,291</b>	<b>326</b>	<b>1,617</b>	<b>1,391</b>	<b>208</b>	<b>18</b>	

A total of 2,946 families (EA - 1,347 and PNS – 1,599) are in the programme constructing/repairing their permanent houses with Red Cross movement support at present. This excludes the number of beneficiary who have either not started (12) or not completed their houses (18).

#### Implementation of construction of 16,800 housing units with Government of India (GoI) fund

This component of RC PCRP commenced in July 2012 and the project was officially launched on 2 October 2012. Beneficiary assessment was done to select the most vulnerable families and as of 31 May, a total of 8,754 families have been identified and approved as eligible families to receive assistance. Out of that, 5,281 families are in the process of constructing new houses and repairing damaged houses and 16 houses had been completed by now (table 5).

**Table 5: Summary of distribution of shelter support and its progress with GoI funds (cumulative)**

District	Planned no. of families	No. of families identified and approved as eligible families to receive assistance	No. of houses		
			New constructions		Repairs
			Ongoing	Completed	Ongoing
Jaffna		2,651	2,216	5	9
Mannar		4,150	1,319	8	0
Mulathivu		927	891	2	0
Killinochchi		1,026	846	1	0
<b>TOTAL</b>	16,800 <sup>4</sup>	8,754	5,272	16	9
<b>TOTAL (repair + construction)</b>			<b>5,297</b>		

Of the total targeted 18,159 affected families (90,800 beneficiaries) in northern districts who lost their houses, some 842 families (EA fund: 826 and GoI fund: 16) enjoy their newly constructed houses, while 5,489 families (EA fund: 208 and GoI fund: 5,281) are presently rebuilding their new homes by themselves. These shelter initiative not only provide a protection and improve their living standards, but also offer them a sense of respect and dignity.

The RC PCRP technical team members provides regular support to beneficiaries ensuring the use of quality construction materials, technical advice and supervision of entire construction phase to ensure quality and safety of houses. The construction of houses is being closely monitored by the monitoring officers with periodic visits and guidance from the senior management and other operation team members. In addition, RC PCRP also receives guidance and advises from technical departments in Delhi, Kuala Lumpur and Geneva. During this period, the head of regional delegation, Mr. Azmat Ulla visited Northern Province in January 2013 followed by Patrick Elliott, Shelter Coordinator of Asia Pacific zone (Disaster Management Unit) and Sandra D'Urzo, senior officer at shelter department in IFRC Geneva in February and March 2013, respectively. They reviewed the shelter component and suggestions and recommendations were given based on their observations and findings, for the successful delivery of the programme. Similarly, the RC PCRP also receives support and advises from the partners national society on regular basis. During this period, Gro Annett, of the Norwegian Red Cross visited in January and discussed the phasing out of the ongoing housing project in Mannar. Later, in May, Laurent Viot of CRC visited the Northern Province and observed the grievance redressal process of Indian housing project including meeting beneficiaries and observing ongoing housing construction.

<sup>4</sup> The exact breakdown of planned number of families will be provided in the next update.

Besides the internal monitoring, Government of India monitoring team made a monitoring visit to IHP sites in Killinochchi and Jaffna in April 2013. Further, six members of parliament of Gol and two high level officials from ministry of external affairs of Gol also visited the project in the same month for monitoring.

### Community Infrastructure

Three projects are ongoing in Krishnapuram, Ampalkulam and Selvanagar GN divisions in Killinochchi under community infrastructure. In Krishnapuram and Ampalkulam, finishing work of the community halls are ongoing. Improvements to the Selvanagar government school, the construction of six urinals (three boys and three girls), repairing septic tank and soakage pit of the old toilet are ongoing at current and construction of fence of 470 ft<sup>2</sup> has been completed .

### Challenges:

- The beneficiaries who started constructing houses more than 500 sq ft often get stuck mid-way through the construction as they cannot afford their contributions to complete the house. This resulted in some delays under Red Cross funded housing programme. This group of beneficiaries are being followed regularly and provided required support to speed up the completion of houses. Under Gol funded housing programme, this has been taken as a key lesson and beneficiaries have been advised to first focus on meeting the minimum requirements. However, it is expected that there will be a group of particularly vulnerable households who will struggle to make their contribution to complete the house.
- A considerable number of people in the Northern Province do not possess legal documents to prove their ownership of land, identity etc., resulting in delays for beneficiary selection and prioritization
- Some of the beneficiaries in the government list are not permanently resettled and SLRCS had to request for new lists. This is the key issue which delayed beneficiary identification and housing construction timeline. Due to that reason planned 200 families had to reduce to 188 in Vavuniya North under HKRC.
- The beneficiary selection process of the IHP is very time consuming due to different interests and delays by the stakeholders (including local government) involved in the process, which need more human resources in order to complete the project in time. The programme team is working on mobilizing its available resources at its best.
- Skilled labour on masonry and carpentry is a limiting resource with the increasing demand. SLRCS is in the process of conducting training and capacity building for local people to increase the skilled labour force that may assist in speeding up the housing construction. Although training is in the pipeline, this remain a challenge as many of the affected people are yet to recover to take on training.
- Escalation of prices of building materials in the market due to the high demand and short supply such as sand and timber is hampering the implementation of the construction and repairing of houses. SLRCS is closely monitoring this inflation with the local authority and how it impacts on the ability of the beneficiaries to complete their houses.
- The previous two points both directly impact on quality so again SLRCS are monitoring this situation and how it impacts on the ability of beneficiaries to achieve the quality of materials and construction required.
- Beneficiary is sometimes not available in the site, due to livelihood activities. Therefore taking photographs and signature delays the whole process
- Difficulties in accessing interior locations due to poor road networks, especially during bad weather condition.

### Health and care

**Outcome: The health risks on the affected population are reduced through the provision of health promotion and disease prevention 20,000 families (100,000 beneficiaries) in northern districts.**

Outputs (expected results)	Activities planned
Enhanced knowledge and improved health practices in targeted communities through health promotion and prevention interventions.	<ul style="list-style-type: none"> <li>• Conduct community assessments in selected areas to map the most acute health needs and develop and implement community plans with the full participation of the community.</li> <li>• Conduct relevant information, education and communication campaigns to increase awareness on identified health issues through</li> </ul>

	<p>various mediums including media, cultural art forms, posters, and billboards.</p> <ul style="list-style-type: none"> <li>• Conduct health awareness events in communities, emphasizing nutrition, disease control (mosquito-borne, water-borne, HIV/AIDS, diabetes/high blood pressure), hygiene and blood donor recruitment.</li> <li>• Identify and train community volunteers using the CBHFA training manual for volunteers.</li> <li>• Deliver community-based first aid training to community members.</li> <li>• Train 1,000 people in first aid and equip them to provide first aid in their communities.</li> </ul>
Improved preparedness and response mechanisms in the target communities to better respond to health in emergencies and epidemics.	<ul style="list-style-type: none"> <li>• Conduct dengue preparedness and response interventions in target communities.</li> <li>• Revise and update SLRCS contingency plans for responding to rapidly emerging epidemics/outbreaks during the course of the year.</li> <li>• Revise and update national disaster response team, branch disaster response team training curriculum by including relevant health topics in an integrated manner with disaster management unit.</li> </ul>
Psychosocial support is provided to affected population	<ul style="list-style-type: none"> <li>• Train 100 staff and volunteers of SLRCS on psychosocial support.</li> <li>• Provide psychosocial support to returning population.</li> </ul>
Enhanced SLRCS profile and capacity at all levels to deliver effective health interventions.	<ul style="list-style-type: none"> <li>• Print and distribute CBHFA volunteer manuals in target branches.</li> <li>• Expand the number of trained community volunteers in target branches.</li> <li>• Establish a system of regular activity reporting in the field, project monitoring, donor reporting and information dissemination.</li> <li>• Strengthen monitoring and reporting systems in the branches.</li> <li>• Produce appropriate volunteer protection and visibility materials for SLRCS.</li> <li>• Document and share best practices and lessons learnt from the SLRCS's work in the communities.</li> </ul>

### Progress:

Ten communities in all five districts (two communities each selected as most vulnerable), in the Northern Province, received basic first aid trainings in commemoration of world first aid day. All the trainings were enlightened by an activity of Youth as Agents of Behavioural Change (YABC) tool kit and conducted by the YABC peer educators of the respective branches. As a result of the series of basic first aid, advanced first aid and ToT on first aid trainings conducted, 12 number of first aid instructors (10 males and 2 females) are in the north, attached to Red Cross Branches at the moment. The progress of trainings within the community people has built on sustainability in capacity building whereby these community trainers are well-prepared to train others on first aid and further expanded SLRCS pool of first aid trainers in the north.

**Table 6: Summary of persons trained in health and care**

Training/ workshop/ activity	No. of trainings	No. of persons trained			Participants	
		Male	Female	Total		
Conducted before reporting period	Basic first aid	26	170	466	636	Staff, volunteers, school teachers, students, community police workers, community members, PCRPF beneficiaries
	Advanced first aid	1	14	14	28	Participants qualified through basic first aid training
	Training of Trainers (ToT) on first aid	1	11	5	16	Persons qualified through advanced first aid training
	Community-	3	10	80	90	Staff, volunteers

	based health and first aid (CBHFA)					
	Psychosocial support programming (PSP) 2011	1	6	21	27	Staff, volunteers
	PSP follow-up workshop	2	4	14	18	Participants of 2011 PSP training
	PSP activity	1	36	0	36	Children of Kanthi Children's Home, Kilinochchi.
Conducted during reporting period	Basic first aid	4	12	76	88	Students, community members, PCRCP beneficiaries
	Training of Trainers (ToT) on first aid	1	10	2	12	Persons qualified through advanced first aid training
	PSP activity	1	1	16	17	Children of 'Paari Childrens' home, Mulathivu

Volunteers of the Mulathivu branch conducted a PSP activity in 'Paari children's home' in February 2013. It comprised of games, two activities of YABC tool kit, a drawing competition and an exhibition with children. Finally gifts and donations were awarded. This was conducted as the first activity of the prepared action plan by the volunteers, at the PSP follow-up workshop. Volunteers are planning to carry out other activities in the plan, as well, in future which greatly help to psychological wellbeing of the conflict affected communities.

As an outcome of the above trainings, these trained people are expected to support the communities in addressing health needs and priorities, since there is a present gap in disease surveillance, prevention and control, preventive health, maternal and child health and nutrition in the North. Simultaneously, these trainings would strengthen the SLRCS's capacity in serving the most vulnerable people in health and care services.

### Water, sanitation, and hygiene promotion

**Outcome: The risk of water and sanitation related diseases has been reduced through the provision of safe water, adequate sanitation and hygiene promotion for up to 20,000 families (or 100,000 beneficiaries) in northern districts.**

Outputs (expected results)	Activities planned
Increased access to safe drinking water and basic sanitation	<ul style="list-style-type: none"> <li>• Construct and repair 18,147 household latrines in conjunction with the permanent shelter construction.</li> <li>• Construction and repair of 41 communal school water and sanitation systems.</li> <li>• Construct public drinking water wells.</li> <li>• Construct/repair individual household wells.</li> <li>• Distribute 20,000 ceramic household water filters; with training, one per family<sup>5</sup> in targeted communities to produce safe drinking water.</li> <li>• Execute community contracts for reconstruction of water supply infrastructure (including training on repair maintenance of the infrastructure).</li> </ul>
Knowledge of good hygiene behaviours has increased in target population.	<ul style="list-style-type: none"> <li>• Baseline of hygiene knowledge and practices.</li> <li>• Training of community volunteers in hygiene promotion through participatory hygiene and sanitation transformation (PHAST).</li> </ul>

<sup>5</sup> In the lessons learnt following 2004 tsunami by SLRCS distributing ceramic household water filters, it was documented that for larger households, one filter may not provide sufficient safe drinking water. However, due to limited resources, SLRCS will continually increase the support in this component when additional resources are made available.

	<ul style="list-style-type: none"> <li>• Develop/revise and print relevant IEC materials to be used.</li> <li>• Conduct hygiene promotion activities linked with water supply and sanitation hardware through the trained volunteers.</li> <li>• Hygiene promotion for school children through child hygiene and sanitation transformation (CHAST).</li> <li>• Conduct household level monitoring and an endline assessment to evaluate level of improvement in hygiene knowledge.</li> </ul>
--	---

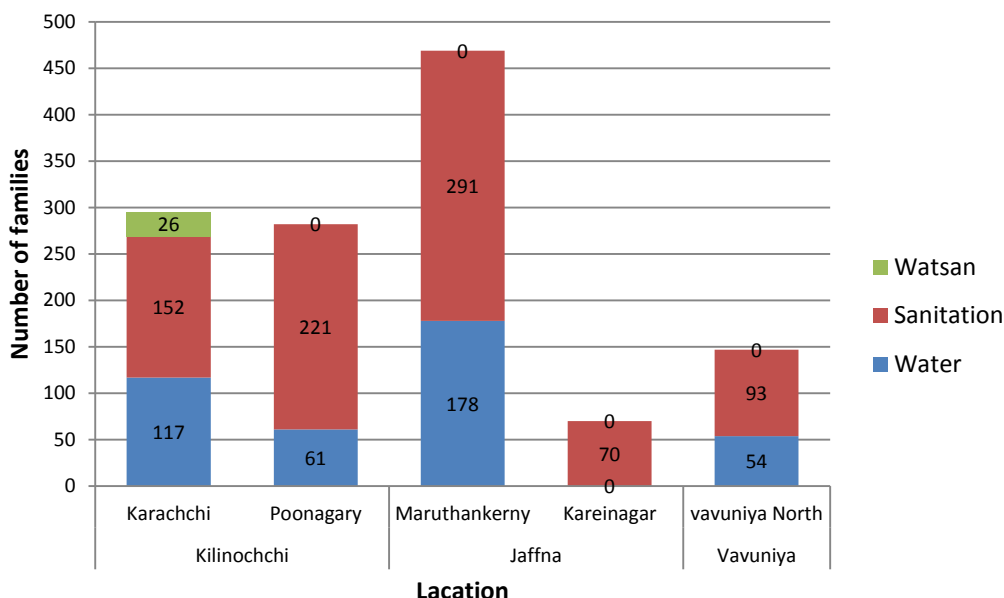
### Progress:

Water and sanitation activities are being implemented in conjunction with housing construction. The priority is given for the sanitation component (construction of the toilet) and if that is already been addressed, the funds are then used for the improvements of water supply; including construction and repairing of individual household wells and provision water supply for individual use. Of those 1,359 families in the programme with EA funds, 1,248 families had received the WatSan grant since appeal to construct/repair individual household WatSan infrastructure, where all projects are ongoing at the moment, and is nearly completion (table 7). Construction of the toilets with Gol funds are going in line with housing construction, since families get an inclusive package of housing and watsan together. Currently 16 toilets completed and 5,281 ongoing with Gol funds. Construction is being monitored by technical officers and monitoring officers to ensure good construction quality.

**Table 7: Present status of WatSan component of the programme with EA fund**

District	No. of families				
	in the program	received grant since appeal	received grant during reporting period	to be received the grant	discontinued/ not started
Kilinochchi	600	578	214	22	0
Jaffna	559	537	83	22	0
Vavuniya	200	148	148	40	12
<b>TOTAL</b>	<b>1,359</b>	<b>1,263</b>	<b>445</b>	<b>84</b>	<b>12</b>

**Figure 2: WatSan grant utilization by the benefiting families with the IFRC EA fund**



Out of planned 1,359 families, 1,263 families received grants under IFRC EA support, majority (827 families) utilized funds to construct/ repair toilets, some (410 families) to improvements to water supply and the rest (26 families) to improve both water and sanitation components. A total of 1,304 families received ceramic water filters with training on use and maintenance to ensure safe drinking water. Upon receiving the WatSan

assistance through PCRPs, those benefitting families received the access safe and adequate water and sanitation which is a fundamental human right and essential to life, health and dignity.

The action plan developed by the volunteers at the hygiene promotion trainings (to conduct hygiene promotion activities linked with water supply and sanitation hardware) were executed during the reporting period by those trained volunteers. Two school hygiene promotion activities were conducted in commemoration of World Water Day on 22 March. Two drinking water wells in one school in Kilinochchi were cleaned by Red Cross volunteers with the support of students and 20 numbers of fruit trees were planted in the other school in Vavuniya. Later on 21 May another hygiene promotion activity was conducted by Mulathivu branch volunteers in line with renovation of water system in the Oddusudan School, Mulathivu with PCRPs support (See table 8). Moreover a hygiene promotion campaign was conducted during the reporting period for 183 families of Ponnagary (73), Uppumaveli (48), Mulliyawalai (68) villages of Mullaitivu district, where the trained volunteers (Male: 1, Female: 10) of Mullaitivu branch conducted a house to house campaign of one week and promoted good hygiene behaviours and dengue prevention.

**Table 8: Summary of persons trained in WatSan**

Training/ workshop/ programme		No. of activities	No. of persons trained			Participants	Conducted by
			Male	Female	Total		
Conducted before reporting period	Training on well cleaning	1	6	14	20	Volunteers	ICRC
	Hygiene promotion	2	5	36	41	Volunteers	IFRC
Conducted during reporting period	Hygiene promotion	3	65	60	125	School students Of Kilinochchi, Vavuniya & Mulathivu	Volunteers of Kilinochchi, Vavuniya & Mulathivu branches

Construction and repair of water and sanitation infrastructure in 'Oddusuddan Maha Vidyalayam' (government school) to provide drinking and utility water supply for the school children is ongoing at the moment. Renovation of overhead water tank had completed by School Development Society, while renovation of two wells are under construction. Construction work is being done by School Development Societies, where the technical support is given by the programme, following owner driven approach. Hygiene promotion activities are ongoing by the trained volunteers, following hardware improvements.

Initial need assessment for water and sanitation assistance has been done in additional six schools in Vavuniya north up on the request made by school authorities through DS. Out of this, it was suggested to construct tube wells in three schools and renovate the tube well in one school, and required approvals are being taken at the moment.

### Livelihood Support

**Outcome: To assist 20,000 displaced families (100,000 beneficiaries) in replacing, repairing, re-establishing and strengthening their household income through the provision of cash grants and guidance on sustainable livelihood interventions.**

Outputs (expected results)	Activities planned
Improved livelihoods for the most vulnerable of the affected Population	<ul style="list-style-type: none"> <li>Assess the livelihood needs of some 20,000 displaced families (100,000 beneficiaries) within re-settled population.</li> <li>Provide grants/resources to enable households to re-establish and strengthen their livelihoods such as farming, livestock rearing, fishing and microenterprise.</li> </ul>
Sustainably improved community livelihood	<ul style="list-style-type: none"> <li>Conduct household livelihood surveys to identify needs of the families in order to provide them the necessary skills and to facilitate</li> </ul>

capacities	<p>access to government and other institutions for assistance on skills acquisition.</p> <ul style="list-style-type: none"> <li>• Assist in establishing model farms on gardening.</li> <li>• Beneficiary training on agriculture and integrating farm and composting practices, livelihood skills and vocation training on different trades.</li> </ul>
------------	--

**Progress:**

After successful submission of livelihood proposals by each family of the programme, 1,315 families (97 per cent of the planned 1,359 families) received a cash grant of LKR 35,000 (CHF 252) in two instalments (table 9). The family made use of the grant for their livelihood based on the livelihood proposals submitted by each family during the assessment period. Additionally they received livelihood trainings for their respective area of livelihood such as fisheries, agriculture, livestock and tailoring during the reporting period (table 10).

**Table 9: Present status of the livelihood component of the programme**

District	DS Division	No. of families In the program	Since appeal		During reporting period			Present status
			1 <sup>st</sup> instalment received	2 <sup>nd</sup> instalment received	1 <sup>st</sup> instalment received	2 <sup>nd</sup> instalment received	Not started	
Kilinochchi	Karachchi	300	300	300	0	1	0	Completed
	Poonakary	300	300	282	2	66	0	Ongoing
Jaffna	Maruthankerny	489	480	478	0	73	0	Ongoing
	Kareinagar	70	70	70	70	58	0	Completed
Vavuniya	Vavuniya North	200	188	185	136	185	12	Ongoing
<b>TOTAL</b>		<b>1,359</b>	<b>1,338</b>	<b>1,315</b>	<b>208</b>	<b>383</b>	<b>12</b>	

**Table 10: Summary of the persons trained on livelihood**

Training/workshop	No. of workshops	No. of persons trained			Participants	
		Male	Female	Total		
Conducted before reporting period	Training on monitoring livelihood grant	1	2	5	7	Volunteers and community mobilizers
	Introductory Livelihood workshops	16	562	286	1,048	Beneficiaries of Krishnapuram, Ampalkulam, Selvanagar, Thiruvaiaru, Thirunagar, Maruthankerny, Championpattu North, Championpattu South, Kudaruppu, Kiranchi West, Kiranchi East, Pokkaruppu, Mulliyan, Vathirayan, Uduthurai, Aliyawalai, Vettilakerny, Mamadu, Paranthan and Sinnadampan villages
	Livelihood training	1	12	6	18	PCRP staff
Conducted during reporting period	Livelihood/ carrier guidance workshop	2	2	36	38	Red Cross volunteers of the Kilinochchi and Mulathivu branches
	Livelihood trainings	33	400	305	465	PCRP beneficiaries
	Business idea generation workshop	1	3	7	10	PCRP beneficiaries
	Artisan trainings	2	0	50	50	Youth and community members of Mullaithivu (Weliyoa) and Vavuniya (Cheddikulam)

Series of trainings started and completed during this period, mainly focusing on the skill development linked to the current and potential livelihoods. PCRCP beneficiaries received skills and knowledge on their livelihoods throughout a total of 33 livelihood trainings, under fisheries (5), livestock (4), tailoring (2), small business (6), home gardening (13), model gardens (2) and crab cultivation (one). Further they received business ideas through a business idea generation workshop, which supported to brainstorm them to become entrepreneurs.



Beneficiaries are in the process of converting an unused boat to crab cages for cultivation at the training. **Photo:** SLRCS.

Furthermore, artisan trainings under IHP for the youth are ongoing to increase workforce of masons and carpenters and meet the increasing demands of such skilled persons for ongoing housing projects in the north. Training of the 1<sup>st</sup> batch of artisans started in March 2013, due to complete in July 2013. This consists of two trainings in Welioya and Cheddikulam on masonry and carpentry. At the end of July 2013, training of the 2<sup>nd</sup> batch of artisans is scheduled to commence in four districts (Jaffna, Mannar, Kilinochchi and Vavuniya) for masonry, carpentry, plumbing and house wiring for 200 persons. Discussions are ongoing with vocational training service providers and other relevant government authorities, including Governors' office of the Northern Province.

A livelihood carrier guidance workshop was conducted to the Red Cross volunteers of the Kilinochchi and Mulathivu branches celebrating international Volunteers Day. Objective was to set goals for future career prospects, to increase self-awareness of their skills, competencies, perception and attitudes, to develop self-confidence to take future challenges, to develop a personal career development plan for each participant to achieve their expectations. Simultaneously, the programme staff and volunteers also received livelihood trainings, which support to accomplish their tasks efficiently and effectively.

The cash grants followed by livelihood trainings, enhanced the income, while providing employment opportunities to the communities, Since the livelihood component of the PCRCP was demand-driven and participatory, with community-led approaches, it is being successful in delivering its outcomes. It enhances the flexibility and decentralization of livelihood support to better suit local opportunities and address needs, to counteract with problems associated with weak or destroyed formal institutions supporting livelihoods, while empowering communities in their relations with community based organizations and government to meet livelihood needs and enhancing the purchasing power capacity of local markets.

The Recovery Coordinator from the Asia Pacific zone office visited the programme areas in and observed the livelihood component of the PCRCP. The livelihood component was reviewed by him and later recommendations were given to strengthen its contribution to restoring and strengthening the livelihoods of those being assisted.

As of revised emergency appeal, it is being planned to assist additional 16,800 families with livelihood grants who are currently receiving housing assistance funded by Government of India. However, the response from partners and donors are very minimal. To address this gap, a proposal was submitted to Australian Red Cross during the reporting period, responding to the shared opportunity for a funding proposal for livelihood. This has been submitted to Department of Immigration and Citizenship (DIAC) by the Australian Red Cross, where the proposal was given a good review, but not succeeded.

#### **Challenges:**

- Lack of well-established markets for improved productive inputs, such as hybrid and adaptable crop varieties and extension and support service facilities to introduce modern and advance techniques, particularly for the agriculture and livestock sector hinder the potential of high productivity.
- Physical access to some agricultural lands in the area is restricted due to land mines which are yet to be cleared.

Lack of interested people to whom RC PCRCP can provide skill-based training in order to increase skilled workforce in Northern Province of Sri Lanka such as masons and carpenters. It is envisaged that sooner or

later, there will be shortage of skilled masons and carpenters due to which the ongoing Indian housing project's construction works may affect directly, delaying the overall construction as planned and agreed with Gol. However the RC PCRP is working with different organizations including the government of Sri Lanka to identify and encourage some people to be trained in different areas.

Disaster Management	
<b>Outcome: Local communities are fully aware of local risks and resources available and are prepared and equipped to respond to disasters. Number of families targeted is 20,000 displaced families (100,000 beneficiaries)</b>	
Outputs (expected results)	Activities planned
Communities are educated in safe behaviours and principles and values	<ul style="list-style-type: none"> <li>Develop/conduct awareness raising activities on mine and other risks (information, education and communication material development, school level competitions, humanitarian values).</li> <li>Support school children with recreational activities/facilities.</li> </ul>
Disaster response tools, mechanisms and systems are established in northern districts with adequate capacities to deliver services	<ul style="list-style-type: none"> <li>Formation and training of local disaster response teams.</li> <li>Provision of standard equipments.</li> <li>Develop local contingency plans for the identified risks/hazards.</li> <li>Facilitate coordination with government disaster response mechanisms.</li> </ul>
Skilled human resources base is established in northern branches to carry out disaster management activities	<ul style="list-style-type: none"> <li>Conduct disaster management training for staff and volunteers.</li> </ul>

### Progress:

Contingency plan of the Kilinochchi branch was developed in their contingency planning workshop in April 2013 and developed the plan for the identified risk/hazard, which is flood. Governance, volunteers and management staff of the Kilinochchi Branch have participated in the workshop. Alongside it, the Branch Disaster Response Training (BDRT) was also conducted and the branch is fully equipped to respond to an emergency situation due to floods. Meanwhile, all PCRP staff received MRE training and are equipped with required knowledge and skills on mine risks to perform their duties with minimum risks.



BDRT members of the kilinochchi branch conducting the assessment at the simulation during the training. **Photo:** SLRCS.

**Table 11: Summary of persons trained in disaster management**

	Training	No. of trainings	No. of persons trained			Participants
			Male	Female	Total	
Conducted before reporting period	Mine Risk Education (MRE)	5	29	58	87	Staff, volunteers
	Basic Disaster Management	3	12	62	74	Staff, volunteers
	Branch Disaster Response Team (BDRT) – Mullaitivu	1	12	19	31	Branch governance, government officials of Disaster Management Centre, staff, volunteers
	Contingency planning	1	8	6	14	Governance, management

	workshop – Mullaithivu					staff and volunteers of Mullaithivu branch
	Workshop on communication in emergencies	1	19	3	22	Staff
Conducted during reporting period	MRE	3	118	10	128	PCRP staff
	BDRT training – Kilinochchi	1	18	13	31	Volunteers, branch governess, officials from government, SLRCS staff
	Contingency Plan Development Workshop – Kilinochchi	1	14	4	18	Governance, management staff and volunteers of Kilinochchi branch

## Organizational development

**Outcome: Branch-level structures in Kilinochchi and Mullaithivu districts are able to provide effective support for local population to improve community resilience, to develop healthy lifestyles, prepare for disasters and respond to emergencies.**

(expected results)	Activities planned
Developed SLRCS local structures to facilitate community-level service delivery mechanisms in northern districts.	<ul style="list-style-type: none"> <li>Establish/reactivate SLRCS structures to support volunteer work of units and divisions.</li> <li>Orientation and support for divisional governance on the Red Cross Red Crescent Movement and constitution, policies and management manuals.</li> <li>Introduction and assistance for health and disaster management in implementing volunteer management systems at divisional level.</li> <li>Develop leadership capacity, awareness on good governance among the divisional level leaders.</li> <li>Support and training on project management and budgeting.</li> <li>Awareness on SLRCS systems and procedures (finance, planning, activity implementation, reporting, and others) for divisions.</li> <li>Support in formation of divisional health and DM volunteer action groups and induction trainings.</li> <li>Support for conducting integrated assessments.</li> <li>Support for initiation of community services.</li> <li>Support for development of fundraising and income-generation plans for divisions.</li> <li>Support community committees in raising common concerns, working to minimize impacts and participate in Red Cross activities.</li> <li>Accreditation of the beneficiary committees as Red Cross units/divisions</li> </ul>

### Progress:

The programme is in the process of strengthening of SLRCS's organizational capacity, mainly in Kilinochchi and Mullaithivu districts. This includes mobilizing the appropriate skills and competencies in branch staff and volunteers to provide services to local communities, strengthening the SLRCS branch structures, and maintaining the branch capacities to ensure delivery of services to communities in the longer run. Furthermore, the programme extended support to Mannar, Vavuniya and Jaffna branches during the reporting period.

**Table 12: Summary of persons trained under organizational development**

Training/workshop		No. of workshops	No. of persons trained			Participants
			Male	Female	Total	
Conducted	Training on Baseline	1	6	3	9	PCRP Staff

before reporting period	survey					
	Social mobilization workshop	1	-	-	-	PCR Staff
	Training of YABC peer educators	1	14	8	22	PCR Staff and volunteers
	YABC review workshop	1	6	6	12	YABC peer educators of 2010 training
	Red Cross Dissemination workshop	5	25	82	107	PCR Staff and volunteers
	Basic digital photography workshop	1	24	6	30	PCR Staff
	Social media workshop	1	15	5	20	PCR Staff
	Gender equity training	1	13	5	19	PCR Staff
	Workshop on beneficiary communication	1	19	3	22	PCR Staff
Conducted during reporting period	Workshop on beneficiary communication	1	13	2	15	PCR Staff
	Workshop on IHP	4	76	12	88	PCR Staff
	Refresher Workshop on IHP	3	114	11	125	
	Workshop on RCIMS	4	86	10	76	PCR Staff
	Volunteer capacity building workshop	2	17	11	28	Volunteers of Kilinochchi and Jaffna branches

A mini marathon (road race) event was conducted by Kilinochchi branch in April to select the participants for national marathon event that was conducted to commemorate the World Red Cross Day.

Two workshops on beneficiary communication were conducted (one in reporting period) aiming to further increase the quality of the services by catering to the real needs on the ground by engaging with communities and listening to their concerns and requirements and making necessary programme adjustments to deliver better services. Louise Taylor, Beneficiary Communication Advisor from South Asian Regional Delegation (SARD) held the workshop with field staff (monitoring officers, technical officers and engineers) to plot the communications activities, identify gaps and brainstorm effective feedback for beneficiaries' concerns. Later she visit project site to discuss with beneficiaries and understand the status and needs of beneficiary communication.

Seven workshops on IHP were conducted to provide knowledge and skills to PCR staff to perform the job efficiently and effectively and to give technical understanding/clarity on construction. One training was also organized on for all database officers on Red Cross Information Management System (RCIMS), new data base system and three trainings were completed in Jaffna, Killinochchi and Vavuniya for all PCR staff involved. RCIMS database has been finalized based on final comments and feedback from all concerned.

## Communications – Advocacy and Public information

A number of activities under communication and visibility are being carried out in the programme in different levels i.e. (1) Internal, (2) External and (3) Beneficiary level.

**Table 13: Types of communication and our activities**

Level		Activities	Present status
1	Internal communication	R CIMS	To be set up and in the process
		News line on the computer screen	Executing
		Event calendar (calendar.redcross.lk)	Executing

2	External Communication	Radio programme (Hour for Humanity)	Executing
		R CIMS	in process
		Web stories	Executing
		Press release	Continued
		Social media platform (face book, twitter, You tube, flicker)	Executing
		SLRCS Newsletter (Quarterly)	Executing
		IHP news letter	Under discussion and to be led by HCI
		Media visit	Periodic – in progress
3	Beneficiary communication	Flyers	Executing
		IHP hand book	Executing
		Flip chart on construction	Executing
		Call centre	in process
		Sign boards	Executing
		Radio programme (Hour of Humanity)	Executing
		Community meetings (Mass meetings, Grievance meetings, Community meetings)	Executing
		Beneficiary log books	Executing
		House to house monitoring visits	Executing

**Red Cross Information Management System (R-CIMS):** A new database has been developed recently meeting the requirement of High Commission of India for managing and tracking the progress of IHP. This database has been developed in consultation and feedback from RC PCR team.

**Website stories:** Published and ongoing.

- [A love story transcending hope through the test of time](#)
- [Red Cross collaboration with Government of India helps families build or repair homes](#)
- [A time to rebuild following years of terrible conflict](#)
- [Building a better future in Sri Lanka](#)
- [Video web stories](#)

**Radio show Hour for Humanity:** The radio is the most accessible medium of communication in the Northern Province and we estimate an audience of at least 500,000 people. All radio shows are uploaded on [SLRCS You Tube site](#) as well as on the [SLRCS web site](#).



SLRCS volunteers hosting the community radio show – Hour of humanity. **Photo:** IFRC.

**Newsletter:** Newsletters published by the Sri Lanka Red Cross every three months have a page dedicated to the IDP programme. The last two issues have focused on the progress under the housing project and feature some human interest stories too.

**Social Media:** Photos and updates from the field disseminated via Facebook, twitter and blogs. Links to the articles written by IFRC HoD:

- [13 July 2012](#)
- [1 October 2012](#)
- [3 October 2012](#)
- [24 October 2012](#)
- [2 February 2013](#)

**Case studies and videos:** Had started shooting a documentary about the Indian Housing Project. The documentary aims at highlighting the progress to date, and the impact the project is making.

---

## Contact information

**For further information specifically related to this operation please contact:**

### Sri Lanka Red Cross Society:

- Tissa Abeywickrama, Director General, phone: +94 77 751 0706; email: [tissa.abeywickrama@redcross.lk](mailto:tissa.abeywickrama@redcross.lk)

### IFRC Sri Lanka country office:

- Bob McKerrow, Head of Office, phone: +94 77 326 1750; [bob.mckerrow@ifrc.org](mailto:bob.mckerrow@ifrc.org)
- Mukesh Singh, Head of Sub Office, phone: +94 77 342 8599; [mukesh.singh@ifrc.org](mailto:mukesh.singh@ifrc.org)

### IFRC South Asia regional office:

- Enkas Chau, Acting Head of Regional Office, phone: +91 11 26154021-24, email: [enkas.chau@ifrc.org](mailto:enkas.chau@ifrc.org)

### IFRC Asia Pacific zone office:

- Mathew Schraeder, Operations Coordinator, phone: +603 9207 5735, mobile: +6019 6200 758, email: [mathew.schraeder@ifrc.org](mailto:mathew.schraeder@ifrc.org)
- Al Panico, Head of operations, phone: + 603 9207 5704, email: [al.panico@ifrc.org](mailto:al.panico@ifrc.org)
- Sharil Dewa, Acting Head of planning, monitoring, evaluation and reporting (PMER), phone: +603 9207 5772, email: [sharil.dewa@ifrc.org](mailto:sharil.dewa@ifrc.org)  
Please send all funding pledges to [zonerm.asiapacific@ifrc.org](mailto:zonerm.asiapacific@ifrc.org)
- Florent Chane, Zone logistics coordinator, phone: +603 9207 5752, mobile: +6012 298 9752, email: [florent.chane@ifrc.org](mailto:florent.chane@ifrc.org)



1. [Click here for financial](#)
  2. [Click here to return to the title page](#)
- 

## How we work

All IFRC assistance seeks to adhere to the Code of Conduct for the International Red Cross and Red Crescent Movement and Non-Governmental Organizations (NGO's) in Disaster Relief and the Humanitarian Charter and Minimum Standards in Disaster Response (Sphere) in delivering assistance to the most vulnerable.

The IFRC's vision is to inspire, encourage, facilitate and promote at all times all forms of humanitarian activities by National Societies, with a view to preventing and alleviating human suffering, and thereby contributing to the maintenance and promotion of human dignity and peace in the world.

[www.ifrc.org](http://www.ifrc.org)  
Saving lives, changing minds.



The IFRC's work is guided by Strategy 2020 which puts forward three strategic aims:

1. Save lives, protect livelihoods, and strengthen recovery from disaster and crises.
2. Enable healthy and safe living.
3. Promote social inclusion and a culture of non-violence and peace.

## Disaster Response Financial Report

MDRLK002 - Sri Lanka - Support for IDP

Timeframe: 12 Apr 10 to 31 Oct 15

Appeal Launch Date: 12 Apr 10

Interim Report

### Selected Parameters

Reporting Timeframe	2010/4-2013/4	Programme	MDRLK002
Budget Timeframe	2010/4-2015/4	Budget	APPROVED
Split by funding source	Y	Project	*

All figures are in Swiss Francs (CHF)

## I. Funding

	Raise humanitarian standards	Grow RC/RC services for vulnerable people	Strengthen RC/RC contribution to development	Heighten influence and support for RC/RC work	Joint working and accountability	TOTAL	Deferred Income
<b>A. Budget</b>		23,364,593				23,364,593	
<b>B. Opening Balance</b>		0				0	
<b>Income</b>							
<u>Cash contributions</u>							
Australian Red Cross		4,239,671				4,239,671	
Australian Red Cross (from Australian Government*)		65,078				65,078	
China Red Cross, Hong Kong branch		1,576,301				1,576,301	
India Government		1,416,555				1,416,555	5,656,319
Irish Red Cross Society		617,513				617,513	
Red Crescent Society of the United Arab Emirates		11,547				11,547	
Red Cross of Monaco		22,196				22,196	
Spanish Red Cross		139,279				139,279	
The Canadian Red Cross Society		1,356,668				1,356,668	
The Republic of Korea National Red Cross (from Republic of Korea - Private Donors*)		1,073,853				1,073,853	
<b>C1. Cash contributions</b>		<b>10,518,661</b>				<b>10,518,661</b>	<b>5,656,319</b>
<u>Other Income</u>							
Sundry Income		50				50	
<b>C4. Other Income</b>		<b>50</b>				<b>50</b>	
<b>C. Total Income = SUM(C1..C4)</b>		<b>10,518,711</b>				<b>10,518,711</b>	<b>5,656,319</b>
<b>D. Total Funding = B + C</b>		<b>10,518,711</b>				<b>10,518,711</b>	<b>5,656,319</b>

\* Funding source data based on information provided by the donor

## II. Movement of Funds

	Raise humanitarian standards	Grow RC/RC services for vulnerable people	Strengthen RC/RC contribution to development	Heighten influence and support for RC/RC work	Joint working and accountability	TOTAL	Deferred Income
<b>B. Opening Balance</b>		0				0	
<b>C. Income</b>		10,518,711				10,518,711	5,656,319
<b>E. Expenditure</b>		-8,565,175				-8,565,175	
<b>F. Closing Balance = (B + C + E)</b>		<b>1,953,536</b>				<b>1,953,536</b>	<b>5,656,319</b>

## Disaster Response Financial Report

MDRLK002 - Sri Lanka - Support for IDP

Timeframe: 12 Apr 10 to 31 Oct 15

Appeal Launch Date: 12 Apr 10

Interim Report

### Selected Parameters

Reporting Timeframe	2010/4-2013/4	Programme	MDRLK002
Budget Timeframe	2010/4-2015/4	Budget	APPROVED
Split by funding source	Y	Project	*

All figures are in Swiss Francs (CHF)

### III. Expenditure

Account Groups	Expenditure						TOTAL	Variance
	Budget	Raise humanitarian standards	Grow RC/RC services for vulnerable people	Strengthen RC/RC contribution to development	Heighten influence and support for RC/RC work	Joint working and accountability		
	A					B	A - B	
<b>BUDGET (C)</b>			<b>23,364,593</b>			<b>23,364,593</b>		
<b>Relief items, Construction, Supplies</b>								
Construction - Housing	4,972,950		4,606,145			4,606,145	366,805	
Construction - Facilities	249,999		17,429			17,429	232,571	
Clothing & Textiles	639		712			712	-73	
Water, Sanitation & Hygiene	949,854		149,761			149,761	800,093	
Medical & First Aid			1,080			1,080	-1,080	
Teaching Materials	1,833						1,833	
Utensils & Tools	25,000		12,570			12,570	12,430	
Other Supplies & Services	5,606,807		757			757	5,606,050	
Cash Disbursement			60,745			60,745	-60,745	
<b>Total Relief items, Construction, Sup</b>	<b>11,807,082</b>		<b>4,849,198</b>			<b>4,849,198</b>	<b>6,957,884</b>	
<b>Land, vehicles &amp; equipment</b>								
Vehicles	186,550		163,423			163,423	23,127	
Computers & Telecom	32,994		42,910			42,910	-9,916	
Office & Household Equipment	20,617		14,333			14,333	6,284	
Others Machinery & Equipment	3,000						3,000	
<b>Total Land, vehicles &amp; equipment</b>	<b>243,161</b>		<b>220,666</b>			<b>220,666</b>	<b>22,495</b>	
<b>Logistics, Transport &amp; Storage</b>								
Distribution & Monitoring	1,000		170			170	830	
Transport & Vehicles Costs	541,827		176,807			176,807	365,020	
Logistics Services	65,881		3,136			3,136	62,745	
<b>Total Logistics, Transport &amp; Storage</b>	<b>608,708</b>		<b>180,114</b>			<b>180,114</b>	<b>428,594</b>	
<b>Personnel</b>								
International Staff	558,000		368,539			368,539	189,461	
National Staff	730,401		285,719			285,719	444,682	
National Society Staff	3,087,770		746,587			746,587	2,341,183	
Volunteers	623		4,357			4,357	-3,734	
<b>Total Personnel</b>	<b>4,376,794</b>		<b>1,405,202</b>			<b>1,405,202</b>	<b>2,971,592</b>	
<b>Consultants &amp; Professional Fees</b>								
Consultants	259,967		121,964			121,964	138,003	
Professional Fees	74,116		56,509			56,509	17,607	
<b>Total Consultants &amp; Professional Fees</b>	<b>334,083</b>		<b>178,474</b>			<b>178,474</b>	<b>155,609</b>	
<b>Workshops &amp; Training</b>								
Workshops & Training	541,665		143,651			143,651	398,014	
<b>Total Workshops &amp; Training</b>	<b>541,665</b>		<b>143,651</b>			<b>143,651</b>	<b>398,014</b>	
<b>General Expenditure</b>								
Travel	64,020		18,959			18,959	45,061	
Information & Public Relations	542,334		82,503			82,503	459,831	
Office Costs	346,736		159,480			159,480	187,256	
Communications	132,702		23,495			23,495	109,207	
Financial Charges	240,310		147,476			147,476	92,834	
Other General Expenses	2,142,345		314,908			314,908	1,827,437	
Shared Office and Services Costs	501,581		192,225			192,225	309,356	
<b>Total General Expenditure</b>	<b>3,970,028</b>		<b>939,045</b>			<b>939,045</b>	<b>3,030,982</b>	
<b>Contributions &amp; Transfers</b>								
Cash Transfers National Societies	31,661		31,661			31,661	0	
<b>Total Contributions &amp; Transfers</b>	<b>31,661</b>		<b>31,661</b>			<b>31,661</b>	<b>0</b>	

**Disaster Response Financial Report**

MDRLK002 - Sri Lanka - Support for IDP

Timeframe: 12 Apr 10 to 31 Oct 15

Appeal Launch Date: 12 Apr 10

Interim Report

**Selected Parameters**

Reporting Timeframe	2010/4-2013/4	Programme	MDRLK002
Budget Timeframe	2010/4-2015/4	Budget	APPROVED
Split by funding source	Y	Project	*

All figures are in Swiss Francs (CHF)

**III. Expenditure**

Account Groups	Budget	Expenditure					TOTAL	Variance
		Raise humanitarian standards	Grow RC/RC services for vulnerable people	Strengthen RC/RC contribution to development	Heighten influence and support for RC/RC work	Joint working and accountability		
	A					B	A - B	
<b>BUDGET (C)</b>			<b>23,364,593</b>			<b>23,364,593</b>		
<b>Operational Provisions</b>								
Operational Provisions			63,739			63,739	-63,739	
<b>Total Operational Provisions</b>			63,739			63,739	-63,739	
<b>Indirect Costs</b>								
Programme & Services Support Recover	1,424,357		520,764			520,764	903,593	
<b>Total Indirect Costs</b>	1,424,357		520,764			520,764	903,593	
<b>Pledge Specific Costs</b>								
Pledge Earmarking Fee			28,561			28,561	-28,561	
Pledge Reporting Fees	27,054		4,100			4,100	22,954	
<b>Total Pledge Specific Costs</b>	27,054		32,661			32,661	-5,607	
<b>TOTAL EXPENDITURE (D)</b>	<b>23,364,593</b>		<b>8,565,175</b>			<b>8,565,175</b>	<b>14,799,418</b>	
<b>VARIANCE (C - D)</b>			<b>14,799,418</b>			<b>14,799,418</b>		