

www.ifrc.org  
Saving lives,  
changing minds.

## Emergency Plan of Action (EPoA) Georgia: Floods

 International Federation  
of Red Cross and Red Crescent Societies

<b>DREF Operation n°</b>	<b>MDRGE015</b>	<b>Glide n°:</b>	<b>FL-2021-000152-GEO</b>
<b>Date of issue:</b>	<b>8 October 2021</b>	<b>Expected timeframe:</b>	<b>3 months</b>
		<b>Expected end date:</b>	<b>31 December 2021</b>
<b>Category allocated to the disaster: <span style="color: yellow;">Yellow</span></b>			
<b>DREF allocated: CHF 176,860</b>			
<b>Total number of people affected:</b>	<b>1,780</b>	<b>Number of people to be assisted:</b>	<b>1,780</b>
<b>Provinces affected:</b>	Adjara Autonomous Republic, Guria Region	<b>Provinces/Regions targeted:</b>	Adjara Autonomous Republic (Kobuleti, Batumi and Khelvachauri Municipalities); Guria Region (Lanchkhuti and Ozurgeti Municipalities)
<b>Host National Society presence:</b> GRCS DM Department, 15 staff members and 48 volunteers across three branches in Batumi, Ozurgeti and Lanchkhuti municipalities. In total, 39 branches country-wide, including 4,500 active volunteers and 198 staff.			
<b>Red Cross Red Crescent Movement partners actively involved in the operation:</b> IFRC Country Cluster Delegation for South Caucasus.			
<b>Other partner organizations actively involved in the operation:</b> Emergency Management Service of Ministry of Interior, municipal authorities			

## A. Situation analysis

### Description of the disaster

During 22-24 September 2021, heavy rains seriously affected five municipalities in the western part of Georgia, in the Autonomies Republic of Adjara and Guria region. The total population in five affected municipalities stands at 195,193, of which 1,780 people (445 household) were heavily affected. The volume of rainfall, in addition to the subsequent landslides, exceeded the capacity of the households to respond in a timely manner and prevent the damages to their properties. Based on the information received from the GRCS branches and volunteers involved in the immediate response activities, as well as from the local authorities of the affected municipalities, the heavy rain caused severe damages of roofs, ground/first floors, basements, and entrances of residential buildings. The flooding of the ground floors and basements further led to the damage to both short- and medium-term food and non-food stocks of the affected families.



Image 1: Flooded street in Khelvachauri © [Netgazeti](#)

The heavy rain also activated the landslides in the rural areas of the affected municipalities. Houses of 20 households in the Autonomous Republic of Adjara and 5 households in Guria region were destroyed. The Government ensured the evacuation of these families and accommodated them in the safe space/shelter immediately. Only one casualty of the disaster was reported: a woman whose house was affected by the landslide was injured and was provided necessary medical care immediately.

The flooding and landslides are also found to have made significant damages to the agricultural land plots and fruit orchards of the local population. It is noteworthy, that subsistence and commercial agriculture are primary sources of income of rural households in Georgia, including the Autonomous Republic of Adjara and Guria region<sup>1</sup>. The damage caused by the disaster is foreseen to have a detrimental effect on the longer-term livelihoods of the people affected.

Special commission established by the Government of Georgia is calculating the damage caused by the heavy rain, flooding and the landslide in the municipalities of Georgia. The public authorities plan to repair the roads and infrastructure, as well as residential buildings damaged as a result of the disaster and provide longer-term housing to the families whose homes were completely destroyed. However, due to the fact that the assessment of damages is a lengthy process, and the affected population is in urgent need of food and household items. Flooding has increased the indoor humidity in the affected houses, hence it has become more difficult for the affected population to ensure proper heating; hence the affected population have requested warm blankets due to the approaching colder season, and kettles for boiling water and preparation of hot meals and beverages. The public authorities approached the GRCS with an official request to provide immediate humanitarian aid (food and non-food items) to the affected households.

## Summary of the current response

### Overview of Host National Society Response action

GRCS is the largest humanitarian organization in Georgia with 39 branches nationwide and over 4,500 active volunteers. It has an auxiliary role to the public authorities in the humanitarian field and is mandated to coordinate the civil society sector before, during and after emergency situations in the country.

The GRCS fulfills its auxiliary role and its role as the leading humanitarian organization being included in the Civil Safety National Plan of Georgia. Georgia Red Cross Society is actively working with the local authorities and central Government, especially with the Emergency Management Service of Georgia at local and central levels, on coordination of the response efforts. The assessment of the situation in affected communities is conducted together with the local authorities and the methods and the types of assistance are jointly identified. The National Society is working with the local authorities on a regular basis and active communication is maintained for information sharing and exchange from both sides.



Image 2: Photo taken by GRCS staff member in an affected household in Batumi

Within the framework of the DRR projects, Disaster Response Volunteer Teams were established and trained for emergency response in the affected communities. Cooperation was strengthened with the local authorities and other key stakeholders. The volunteer teams were actively involved in annual simulation exercises together with the local authorities before the pandemic outbreak in Georgia. Besides, GRCS has been actively working with the local population and the stakeholders through regular awareness-raising activities (trainings, workshops, distribution of booklets, leaflets, and etc.). These activities have facilitated the rapid response at community level. Based on this experience, the volunteer teams were mobilized to inform the most vulnerable households about the weather forecast and supported them to undertake risk reduction measures prior to the disaster, and followed by the rapid assessment and the provision of PFA. Due to the COVID-19 pandemic, resources and capacities of the NS were already exhausted, which limited the scale of awareness interventions.

Moreover, the GRCS conducted two rounds of the Preparedness for Effective Response (PER) exercises through which the main needs, gaps and the next steps of the GRCS plan of action were identified. The main needs identified include the elaboration of the contingency plan and standard operating procedures (SOPs) for the better preparedness of the NS during emergency.

<sup>1</sup> <https://agenda.ge/en/news/2021/2760>, <https://agenda.ge/en/news/2021/2977>

GRCS operates local branches in three affected Municipalities (Batumi, Ozurgeti and Lanchkhuti municipalities) in both affected regions. Batumi branch is coordinating response activities and the volunteer groups in the neighboring Kobuleti and Khelvachauri municipalities (which are also located in the Autonomous Republic of Adjara). In total, the branches have six staff members and 800 registered volunteers of which 200 are active. These 200 volunteers have been trained in Disaster Management, First Aid, PSS including PFA, and needs assessments.

Availability of the network of trained volunteers allowed the GRCS' DM Department to immediately deploy its volunteer teams to the affected locations; a total of 48 branch volunteers were deployed to undertake disaster risk reduction and awareness raising activities to prepare the most vulnerable households for the imminent weather, to conduct a rapid assessment and to participate in the emergency response activities in the affected places. GRCS volunteers also provided Psychological First Aid (PFA) to the affected population; up to 90 people have received PFA in the targeted regions. The mobilized volunteers are maintaining regular communication with relevant structures and the local population to support them in case of need.

While there is limited danger of the spread of water-borne diseases, the GRCS First Aid (FA) volunteers are on standby to deliver FA in case of need. Despite limited risk of water-borne diseases, evidence suggests that such diseases come after the water recedes, which can contaminate the drinking water sources; therefore, activities will be undertaken to monitor reporting of water-borne diseases.

The GRCS DM Department in cooperation with the GRCS branches conducted the rapid needs assessment, during which the abovementioned 48 volunteers collected assessment data through household visits and key informant interviews in the affected areas of Batumi, Khelvachauri, Kobuleti, Lanchkhuti and Ozurgeti.

### **Overview of Red Cross Red Crescent Movement Actions in country**

The GRCS is the largest humanitarian organization in Georgia with countrywide presence and coverage through its 39 branches and over 4,500 active volunteers. It has an auxiliary role to the Government in the humanitarian field and is mandated to coordinate the civil society sector before, during and after emergencies. The GRCS operates local branches in 3 affected municipalities out of five. A total of 48 volunteers of the GRCS were deployed to conduct a rapid needs assessment and to provide PFA in the affected areas.

The GRCS maintains close coordination with the in-country Movement Partners, including the IFRC, ICRC and the Austrian Red Cross. By this time, no support to the affected population is foreseen from the partner National Societies in Georgia.

The IFRC Country Cluster Delegation for South Caucasus is based in Tbilisi, Georgia, in which 5 staff members are employed: Head of Delegation, Programme Coordinator, PMER Officer, Health Officer, Finance and Admin, and HR and Admin. The GRCS works closely with the IFRC Country Cluster Delegation to prepare for the DREF operation, and relies on technical support for planning, implementation and monitoring of the operation.

### **Overview of other actors in country**

In accordance with the Civil Safety National Plan, the GRCS takes a leading role among external NGOs and maintains close communication with the relevant non-state actors in Georgia (Save the Children, ASB, CENN, People in Need, Caritas, Salvation Army, etc.). Currently, no other NGOs are involved in the response to the needs of the affected population due to limited funding available and absence of disaster response projects.

The Emergency Management Service (EMS) under the Ministry of Interior in Georgia is actively involved in the disaster response and works to ensure the uninterrupted functioning of the critical infrastructure in the affected municipalities. Response works include the cleaning and restoration of the damaged areas, properties, and infrastructure in the immediate aftermath of the emergency.

GRCS has maintained and will continue close coordination and information sharing with the Emergency Management Service of Georgia and the local authorities during the whole DREF operation.

## Needs analysis, targeting, scenario planning and risk assessment



Image 3: GRCS volunteer conducts rapid needs assessment. Taken by Lanchkhuti volunteer Salome Dolidze

The needs analysis is based on initial findings from the rapid needs assessment, which was conducted during the first 72 hours after the disaster by a team of 48 local volunteers in the affected areas jointly with the local authorities. During the rapid assessment process, approximately 20% of the affected population were interviewed via household visits and key informant interviews. The GRCS is also receiving frequent updates and information from the local authorities and the Governor's offices of the targeted areas.

During the rapid assessment of the needs of the affected households, the volunteers observed the conditions of the affected households and conducted interviews with families using the needs assessment forms developed by the GRCS in a coordination with the key stakeholders.

Based on the rapid assessment findings, the main urgent needs of the households revolve around livelihood and basic needs support where approximately 95% of the interviewed households mentioned basic food and hygiene items as the most urgent support needed. The findings have further been verified by cross-checking with the local authorities' assessments. It is worth noting that the findings are further complemented by the official request received by the GRCS from the public authorities in which the GRCS is urgently asked to provide immediate humanitarian aid (food and non-food items) to the affected households.

Due to the damages caused by the disaster, and as the weather conditions have significantly deteriorated over past several weeks in Georgia and the temperature has dropped, the majority of the affected households report being in need of warm blankets and kettles for boiling water.

It is also noteworthy that the disaster occurred during the fourth wave of COVID-19 pandemic in Georgia. The flu season is also approaching. Damage to the hygiene stocks of the affected population increases the risks of their exposure to COVID-19 virus and the seasonal flu. Therefore, they are facing an urgent need of essential hygiene items to be able to protect themselves from COVID-19, as well as other infectious and viral diseases.

Based on the information obtained by the Georgia Red Cross local branch staff and volunteers in coordination with the local government, a total of 445 households (1,780 people) were affected by the disaster in the following municipalities:

Affected Municipality	Total population	Number of most affected people <sup>2</sup>	Number of most affected households
Batumi	155,000	480	120
Kobuleti	27,546	340	85
Khelvachauri	6,143	360	90
Lanchkhuti	6,395	400	100
Ozurgeti	14,672	200	50
<b>Total</b>	<b>195,193</b>	<b>1,780</b>	<b>445</b>

Based on the key informant interviews and consultations with the local authorities, it is foreseen that the local authorities will recover the damaged houses and agricultural lands. The household visits and observations during the rapid assessment showed that the heavy rain and the landslide have caused severe damages to basements and ground floors of the houses, where majority of people keep their household food and hygiene stocks. The Government already provided safe shelter for 25 households in Adjara and Guria. While there are still uncertainties with the timeframe of the agricultural recoveries, the urgent and unmet needs of the affected population are basic food and non-food items.

Multiple evidence suggests that similar disasters have a significant impact on the mental health of the affected population. As mentioned above, the trained GRCS volunteers have been providing PFA to the affected population since the onset of the disaster. Throughout the DREF operation, the GRCS will extend its MHPSS activities proactively to the affected population. The leaflets promoting the GRCS PFA/PSS service through its hotline, including the hotline

<sup>2</sup> Estimated 4 people per household.

number, will be disseminated during distribution of food and non-food items and the targeted households will be encouraged to address the GRCS for mental and psychosocial support.

It is noteworthy, that currently the COVID-19 epidemiological situation in the country is unfavorable, with 618,620 COVID-19 cases reported in total and 867 during past 24 hours (as of 4 October 2021)<sup>3</sup>. Volunteers are properly equipped with PPE and follow all the necessary measures recommended by WHO, National Center for Disease Control, IFRC and the GRCS. However, there is still a need of additional personal protective equipment (face masks, shields, gloves, hand sanitizers etc.) to ensure the safety and decrease the risks of exposure to the virus of the volunteers and targeted population during the response activities due to the COVID-19 pandemic in the country.

### Targeting

The GRCS aims to target 1,780 most affected people in the five affected municipalities, whose houses and food and non-food stocks were damaged as a result of the disaster. The targeted households have not received any assistance/compensation from the public authorities and non-state actors. Targeting is based on assessment in coordination with the local authorities.

### Scenario planning

**Likelihood:** rare (1); unlikely (2); possible (3); likely (4); almost certain (5)

**Impact:** negligible (1); minor (2); moderate (3); major (4); severe (5)

Scenario	Likelihood	Impact	Humanitarian Consequence	Potential Response
<b>Increased rainfall in the coming days or weeks</b>	4	4	The situation will worsen, and will cause more damage to the households in the targeted municipalities. The rain can affect other municipalities as well. The heavy rains will increase the risks of landslides as well.	GRCS will put efforts in mobilizing more resources for providing the necessary support and timely response.
<b>People remain without basic needs (food, and non-food items) for weeks or months</b>	1	4	This will create additional problems for the local population and the Georgia Red Cross Society. However, this scenario is unlikely.	GRCS will maintain communication with local people in need to inform them about planned assistance to come. There are also coping mechanisms in the community when people are providing available support to each other during emergencies.
<b>Lockdown due to COVID-19</b>	2	4	Prices of the food and non-food items are increased. Local population is isolated and their access to essential food and non-food items is decreased.	Volunteer groups will visit the affected households and provide necessary basic food and non-food items. The volunteers will visit to the elderly with their daily chores and errands, i.e. shopping for supplies. Special protection should be provided to the volunteers during the response activities. Besides, the process of distribution of aid will be changed to 'no-contact' – e.g. volunteers will leave the aid parcels at the doors of the targeted household.

<sup>3</sup> <https://stopcov.ge/>

## Operation Risk Assessment

GRCS has a high reputation and a trust, good cooperation and partnership with the authorities, key stakeholders, and the local population Georgia wide. The situation with the COVID-19 pandemic can affect the overall implementation of planned response activities. The following risks have been registered for the response on the following scale:

**Likelihood:** rare (1); unlikely (2); possible (3); likely (4); almost certain (5)

**Impact:** negligible (1); minor (2); moderate (3); major (4); severe (5)

Risk	Likelihood	Impact	Explanation & Mitigation Strategy
GRCS Staff and Volunteers are exposed to COVID-19	2	4	PPEs and SoPs are in place for the GRCS staff and volunteers. Distribution process will be organized by door-to-door rather than public areas, which allows for physical distancing. The stores are open and there are no difficulties in procuring the required products. GRCS staff and volunteers have received all necessary/relevant trainings to ensure safety during response activities.
People are frustrated that they do not receive support	2	4	Clear targeting criteria will be communicated and coordinated through relevant and appropriate channels of communication.
Complaints towards GRCS is published in media	2	4	GRCS will systematically log feedback and complaints and will act accordingly to respond to the sensitive complaints.
Challenges related to dealing with the expectations of the affected communities due to limited funds	3	3	GRCS will design a communication plan to manage expectations of the local population. GRCS will map other available services and refer the affected population to relevant state and non-state services.

## B. Operational strategy

### Overall operational objective

The overall objective of the operation is to provide relief assistance to 445 affected households (1,780 people) in two regions, whose houses were flooded or affected by landslide and whose food and non-food stocks were damaged, through the distribution of food and non-food items. The MHPSS needs of the affected individuals will be met through raising their awareness about the GRCS's PFA/PSS service through its hotline.

The operational strategy builds on the rapid needs assessment, its observations and findings, as well as the lessons learned from the previous DREF operations, collected through the Lessons Learned Workshops and monitoring. It is noteworthy that the lessons learned exercises and the experience accumulated throughout previous DREF operations have clearly demonstrated the importance and relevance of provision of basic food and non-food items to the people affected by similar disasters.

All targeted households will receive assistance. Targeting will be based on damage and needs assessment and coordination with the local authorities.

It is worth nothing that while the GRCS has accumulated significant experience of provision of CVA during the emergency response activities, within this operation the CVA modality will not be used with the reason being twofold. Firstly, the Municipal Elections 2021 were held on 2 October 2021 and the Runoff Elections will be held on 30 October 2021; during the pre-election period, providing cash assistance bears significant risks, as it may be perceived as voter bribery. Secondly, based on a CVA feasibility study conducted by IFRC and GRCS in 2020, cash-based assistance is accepted as response modality by the Georgian Government; however, there are certain limitations concerning the eligibility of the cash assistance. People who are receiving social assistance or are registered in the Governmental protection schemes are obliged to indicate the cash assistance in the income tax statement, which than counts as income. For that, affected people are reluctant to accept cash assistance. The assessment on the ground showed, that cash assistance as such is not the most preferred response option due to people's reluctance and not clear known

Governmental policies regarding cash assistance. Hence, the GRCS decided to provide in-kind assistance, including the food and non-food items.

### Proposed strategy:

GRCS is implementing the following activities within the DREF operation:

- Detailed needs assessment and finalization of lists of targeted people specifying further the extent and scope of damages jointly with local authorities.
- Local procurement of aid items; hygiene items, household items and food.
- Distribution of hygiene kits (a one-off distribution of four months' supply of hygiene items) to 445 households (1,780 people), accompanied by the health and hygiene promotion activities (on COVID-19 safety and prevention).
- A one-off distribution of household items, including the blankets and kettles.
- Distribution of food parcels (a one-off distribution of four months' supply of food items) to 445 households (1,780 people). The composition of a food parcel was developed in compliance with the SPHERE standards. The monetary value of a single food parcel is GEL 360 (about CHF 107).
- The distribution of food and non-food items will be accompanied by awareness raising (through face-to-face conversations) of the affected population on health and hygiene topics, and protection of household and livelihoods assets (e.g. risks of storing the long-term stocks of food and non-food items in the basement).
- During the distribution of food and non-food items the engaged staff and volunteers will disseminate informational leaflets promoting the GRCS' PSS/PFA service through its hotline, including the hotline number.
- Regular monitoring of activities jointly by GRCS and IFRC
- Post-distribution monitoring to measure the satisfaction of the targeted people with the support provided, the GRCS service, the registration process and the distributions.
- A participatory lessons learned workshop will be conducted to measure the relevance, effectiveness and efficiency of the DREF operation.

### Content of relief items:

Table 1		Table 2		Table 3	
Content of food parcels (per household)		Content of hygiene kits (per household) (NS standard kit) and livelihood items		Household Items: Clothing and Textile (per household)	
Content of food parcel	Quantity	Items	Quantity	Item	Quantity
Flour (1 kg)	5 Units	Face mask	60 pcs	Blanket	2
Salt (1 kg)	1 Unit	Toothpaste	2 pcs	Kettle	1
Sugar (800 gr)	2 units	Toothbrush	4 pcs		
Rice (800 gr)	12 units	Toilet paper	8 rolls		
Tea	3 packs	Liquid Soap (400 gr)	2 pcs		
Pasta 500 gr	24 packs	Dishwashing liquid (500 mg)	2 pc		
Buckwheat (800 gr)	6 packages	Baby Soap	2 Pc		
Oil (1 liter)	1 unit	Wet wipes	1 Pc		
Lentils (800 g)	10 units				

The food parcel composition meets the International Minimum Standard of energy (KCAL) per day per person, and has been developed with due consideration of the local cultural aspects. The parcel is designed by local staff based on community feedback and in consultation with a local nutritionist.

### Human Resource

The GRCS will continue to mobilize its existing volunteers from the affected communities. Local branches and the GRCS DM staff will ensure the proper implementation of the operation. The IFRC Country Cluster Delegation for South

Caucasus will provide technical support to the planning and the implementation of the DREF operation, on a programmatic level as well as with finance and administration.

### **Logistics and supply chain**

The GRCS has a logistics department and procurement guidelines in place which are in full compliance with the IFRC procurement standards and the local legal requirements. The procurement will be done locally and is expected to take two to four weeks. It is worth noting that the GRCS supply chain have recently been improved based on lessons learned from previous operations and of which this DREF operation will take account to ensure timeliness and impact of the DREF support. This includes smooth facilitation of the support from tendering, procurement, warehouse service/packing, delivering items to the sites, distributions, followed by timely post-distribution monitoring.

### **Communications**

Integral part of the communication plan is communication to the affected population to ensure that the targeted people are well informed about the activities and their possibilities to relay their feedback and concerns related to the DREF operation and the support provided.

The visibility of GRCS and IFRC activities and strengthening of the National Society's image will be ensured by maximizing the visibility of National Society through appropriate branding of volunteers and staff, local press releases, local media field visits, relief distributions, visits to the affected people, monitoring and evaluation by staff and trained volunteers of the Red Cross branches.

COVID-19 related informational materials, phone cards, local internet vouchers will be provided to the volunteers.

### **Planning, Monitoring, Evaluation and Reporting (PMER)**

GRCS and the IFRC Country Cluster Delegation for Southern Caucasus (based in Tbilisi) will jointly monitor the action. Activity-based monitoring measures will be undertaken, as well as the timely post-distribution monitoring to examine the satisfaction of the targeted people with the support provided, the GRCS service, the registration and the distribution process. A participatory lessons learned workshop will also be conducted to examine the relevance, effectiveness and efficiency of the DREF operation.

### **Community Engagement and Accountability (CEA)**

Communication and participation of the affected people has been ensured with the strong presence of the local GRCS branches in the affected areas. The GRCS volunteer teams were mobilized prior to the disaster to inform the most vulnerable households about the weather forecast and to supported them to undertake risk reduction measures prior to the disaster. The DREF operation is based on assessment findings in which the primary source of information is accumulated from the affected people with inclusion and participation of the targeted areas.

Throughout the operation it will be ensured that people affected by the flooding and in areas where the Georgia Red Cross is carrying out distributions are consulted prior to those distributions and understand why the items are distributed, to whom, and based on which criteria. Appropriate channels and opportunities will be provided to the community members and the targeted population to ask questions, receive answers and to give feedback. In all activities, local branch representatives will be fully involved and coordinate all activities with the local authorities and relevant local representatives.

A well-functioning feedback and complaints mechanism established which allows the GRCS to provide relevant, timely and reliable information based on the main information needs of targeted population. Face-to-face interactions with the targeted people through household visits, community meetings, as well as the GRCS hotline service will be utilized as the primary feedback channels within the operation. The post-distribution monitoring process will also be used to ensure strong emphasis on community participation and feedback.

### **Protection, Gender and Inclusion (PGI)**

The intervention will be based on the IFRC's minimum standards to Protection, Gender and Inclusion in emergencies. The distributions will be centered around dignity, access, participation, and safety (DAPS principles). As there is a general lack of information about available support from the Government and how to access it, information accessibility will be of key concern throughout the response in parallel with CEA, as well as physical accessibility to ensure inclusive distributions.

Further, due to the worsening of people's socio-economic situation, coordination with livelihood and basic needs interventions will be necessary to guarantee that people at risk of SGBV or exploitation are linked to economic

opportunities and interventions. It is known that the risk of Intimate partner violence (IPV) can increase due to reduction of livelihood resources and deterioration of financial burden, leading to tensions and aggressive behaviors, mainly against women and older people.

### **Information Technologies (IT)**

GRCS webpage and FB page will be actively used for the information sharing with the public on DREF activities, photos, and other relevant materials. GRCS has a professional IT focal point which will provide support as needed. Tablets and smartphones will be utilized for monitoring purposes and for collecting feedback to facilitate smooth and timely analysis and response.

### **Security**

The area of the operation does not have any major security issues. Cooperation with local authorities will ensure the safety and security at the distribution points. GRCS will work with the local population and all key stakeholders to follow the rules and procedures set forth by the National Disease Control Center, WHO, and IFRC.

### **Administration and Finance**

GRCS Finance Department will follow the financial component implementation and will provide inputs for the development of the final report. Administration and finance will further be supported by the IFRC Country Cluster Delegation for South Caucasus.

## C. Detailed Operational Plan



### Water, sanitation, and hygiene

People targeted: 1,780

Male: 795

Female: 985

Requirements (CHF): 62,636

**Needs analysis:** Based on the needs assessment and request from the local authorities, hygiene parcels will be distributed to the affected population.

**Population to be assisted:** 445 affected households (1,780 people) will receive hygiene kits, containing four months' supply of hygiene items.

**Programme standards/benchmarks:** While providing assistance, GRCS will adhere to international Sphere standards.

P&B Output Code	WASH Outcome1: The risk of water and sanitation related diseases has been reduced through provision of appropriate sanitation and hygiene items to the affected population.	% of people who report through the satisfaction survey that the hygiene items received were relevant for their needs (target: 70%)											
	Output 1.1. Hygiene needs of the most affected population by the floods are improved.	# of people provided with hygiene kits (target: 1,780) # of households provided with hygiene sets (target: 445) # of people surveyed for post-distribution monitoring (target: 235)											
	Activities planned /Week	1	2	3	4	5	6	7	8	9	10	11	12
AP029	Detailed assessment to identify areas for intervention	x	x	x									
AP029	Procurement of hygiene parcels		x	x	x	x	x						
AP029	Procurement of Clothing and Textiles		x	x	x	x	x						
AP029	Distribution of hygiene parcels			x	x	x	x	x					
AP029	Distribution of Clothing and Textiles			x	x	x	x	x					
AP029	Awareness raising for hygiene promotion and health activities (COVID-19)			x	x	x	x	x					
AP029	Monitoring of the distribution			x	x	x	x	x					
AP029	Post-distribution monitoring survey conducted			x	x	x	x	x					



## Livelihoods and basic needs

**People targeted:** 1780

Male: 795

Female: 985

**Requirements (CHF): 83,510**

**Needs analysis:** Based on the need's assessment and requests from the local authorities, 445 households need basic food items.

**Population to be assisted:** 445 affected families (1,780 people) will receive four months' supply of food items

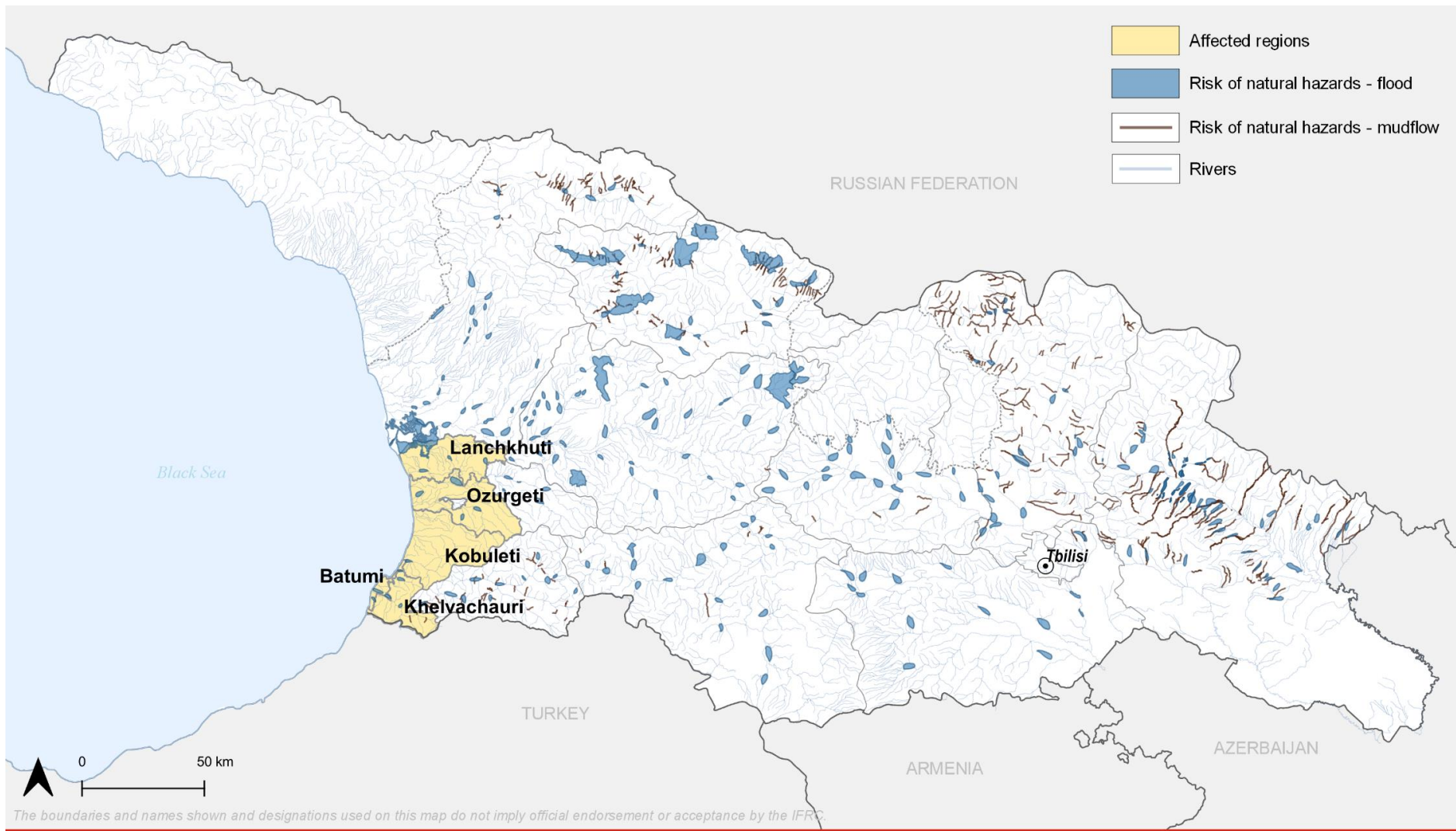
**Programme standards/benchmarks:** While providing assistance, GRCS will adhere to international Sphere standards.

P&B Output Code	Livelihoods and basic needs Outcome 1: Communities, especially in disaster and crisis affected areas, restore, and strengthen their livelihoods	% of people who report during the satisfaction survey that the food items received where matching their needs (target: 70%)											
	Livelihoods and basic needs Output 1.2: Basic needs assistance for livelihoods security including food is provided to the most affected communities	# of households provided with emergency food parcels (target: 445) # of people provided with emergency food parcels (target: 1,780) # of people surveyed for post-distribution monitoring (target: 235)											
	Activities planned /Week	1	2	3	4	5	6	7	8	9	10	11	12
AP008	Detailed assessment of the basic food needs of the affected population	x	x	x									
AP008	Procurement of food parcels, blankets, and kettles		x	x	x	x	x						
AP008	Distribution of food parcels, blankets, and kettles			x	x	x	x						
AP008	Monitoring of the distribution			x	x	x	x	x	x	x	x	x	x
AP008	Post-distribution monitoring survey conducted			x	x	x	x						

## Strategies for Implementation

Requirements (CHF): 30,714

P&B Output Code	S1.1: National Society capacity building and organizational development objectives are facilitated to ensure that National Societies have the necessary legal, ethical, and financial foundations, systems and structures, competences and capacities to plan and perform													
	Output S1.1.4: National Societies have effective and motivated volunteers who are protected	% of local volunteers who are mobilized and involved in the response activities (target 80%) % of volunteers properly trained for the implemented field activities (target 100%)												
	Activities planned /Week	1	2	3	4	5	6	7	8	9	10	11	12	
AP040	Activate volunteers for the implementation of the plan	x	x	x										
AP040	Procurement of the PPE for volunteers		x	x	x	x								
AP040	Insuring volunteers	x	x	x	x	x	x	x	x	x	x	x	x	
AP040	Deploy staff experts for the implementation of the plan	x	x	x	x	x	x	x	x	x				
AP040	Conduct regular monitoring of the implementation	x	x	x	x	x	x	x	x	x	x	x	x	
AP040	Conduct an evaluation of the implemented activities											x	x	
P&B Output Code	OutcomeS2.1: Effective and coordinated international disaster response is ensured													
	Output S2.1.1: Effective response preparedness and NS surge capacity mechanism is maintained	- Number of IFRC monitoring visits (target:2) - Operational review is conducted: Yes - Post-distribution monitoring/ satisfaction survey is conducted (target: 2)												
	Activities planned /Week	1	2	3	4	5	6	7	8	9	10	11	12	
AP046	IFRC Monitoring				x	x			x	x				
AP042	Lessons Learned Workshop											x	x	
P&B Output Code	Output S2.1.4: Supply chain and fleet services meet recognized quality and accountability standards													
	Activities planned /Week	1	2	3	4	5	6	7	8	9	10	11	12	
AP050	Warehousing, goods reception, forwarding, fleet, fuel costs (not related to a specific area of focus)	x	x	x	x	x	x	x	x	x	x	x	x	



### Georgia, Floods Emergency Relief Disaster Fund

MDRGE015  
FL-2021-000152-GEO

2021/09/29  
Map data source: ICRC, GeoNode/Sustainable Caucasus  
DCC | IM | BUD



## D. BUDGET

The budget of this DREF operation is **CHF 176,860** [Please click here to see the budget.](#)

---

### Contact information

For further information, specifically related to this operation please contact:

#### In the Georgia Red Cross Society

- **Nino Osepaishvili**, Secretary General  
phone: +995593991525; email: [nosepaishvili@redcross.ge](mailto:nosepaishvili@redcross.ge)
- **Kakhaber Mamuladze**, Deputy Secretary General/Head of Disaster Management Department  
phone: +995577230026; email: [dm@redcross.ge](mailto:dm@redcross.ge)

#### In the IFRC Regional Office for Europe

- **Agnes Rajacic**, Senior Disaster Management Officer;  
phone: +36 1 888 4537; email: [agnes.rajacic@ifrc.org](mailto:agnes.rajacic@ifrc.org)
- **Andreas Weissenberg**, Head of DCC, [andreas.weissenberg@ifrc.org](mailto:andreas.weissenberg@ifrc.org)

#### In the IFRC Secretariat, Geneva

- **Antoine Belair**, Senior Officer, Ops. Coordination, [antoine.belair@ifrc.org](mailto:antoine.belair@ifrc.org), phone: +41 79 708 314
- 

## How we work

All IFRC assistance seeks to adhere to the **Code of Conduct** for the International Red Cross and Red Crescent Movement and Non-Governmental Organizations (NGO's) in Disaster Relief and the **Humanitarian Charter and Minimum Standards in Humanitarian Response (Sphere)** in delivering assistance to the most vulnerable. The IFRC's vision is to inspire, **encourage, facilitate and promote at all times all forms of humanitarian activities** by National Societies, with a view to **preventing and alleviating human suffering**, and thereby contributing to the maintenance and promotion of human dignity and peace in the world.

# DREF OPERATION

MDRGE015 - Georgia - Floods

10/8/2018

## Budget by Resource

Budget Group	Budget
Distribution & Monitoring	1,931
<b>Logistics, Transport &amp; Storage</b>	<b>1,931</b>
Professional Fees	3,157
<b>Consultants &amp; Professional Fees</b>	<b>3,157</b>
Workshops & Training	1,634
<b>Workshops &amp; Training</b>	<b>1,634</b>
Financial Charges	1,485
<b>General Expenditure</b>	<b>1,485</b>
Cash Transfers National Societies	157,859
<b>Contributions and Transfers</b>	<b>157,859</b>
DIRECT COSTS	166,066
INDIRECT COSTS	10,794
<b>TOTAL BUDGET</b>	<b>176,860</b>

## Budget by Area of Intervention

AOF3 Livelihoods and Basic Needs	83,510
AOF5 Water, Sanitation and Hygiene	62,636
SF11 Strengthen National Societies	23,714
SF12 Effective International Disaster Management	2,056
SF14 Ensure a strong IFRC	4,944
<b>TOTAL</b>	<b>176,860</b>

