

(Revised) Appeal №: MDR65003	To be assisted: approximately 73,000 people (out of initial total of 100,500 ¹)	Appeal launched: 13 March 2020
	DREF allocated: 500,000 Swiss francs (fully reimbursed)	Revision n° 3 issued: 25 October 2021
Glide №: CE-2020-000036-GRC	Total funding requirements: 12 million² Swiss francs (increased from 11 million Swiss francs)	Appeal ends: 30 September 2022 (original timeframe: 31 December 2021)
	Funding gap: 4.8 million Swiss francs	Extended by 9 months

Originally focusing on population movement to Greece and Turkey in 2020, the revision of this Emergency Appeal is reflecting the **phasing out of the Turkey component**³ of this operation while expanding support to the **Hellenic Red Cross (HRC)** to continue delivering assistance and support to some **73,000 people** for an **additional 9 months**. This revised Emergency Appeal seeks to cover a funding gap of 4.8 million Swiss Francs to enable the International Federation of Red Cross and Red Crescent Societies (IFRC) to support HRC with a focus on the following sectors of intervention and enabling actions: **Shelter, Livelihoods and basic needs, Health (including Basic Psychosocial Support), Water, Sanitation and Hygiene (WASH), Protection Gender and Inclusion (PGI), Migration and National Society strengthening.**

This Emergency Appeal revision and timeframe extension is mainly to address the current situation in both the mainland and the islands in Greece, the limited resources available from various stakeholders to support migrant needs, and the capacity of IFRC and HRC to respond to the needs of migrants and refugees in the country. The nine-month extension (extending the operation until September 2022), will allow for the continuation of urgently needed assistance, while also building the foundations of a transition from emergency response to longer-term programming aimed at meeting



Kara Tepe II RIC, Mobile Health Unit, Lesvos Island, Greece, Photo credits: HRC

¹ 73,000 continue to be assisted in Greece and an estimated 27,500 people were reached by the concluded activities in Turkey


² Comprising of a funding ask of CHF 11.4 million for ongoing and future activities in Greece, and CHF 400k already raised for the concluded activities in Turkey.

³ The name of the operation has also been revised from "Turkey-Greece and other countries: Population Movement" to "Greece: Population Movement".

the protracted needs of migrants and refugees in Greece⁴. Additionally, the operational plan also contains reinforced preparedness activities in Greece for **scenarios linked to the situation in Afghanistan**.

The planned response will be adjusted based on further developments as required. The **Revised Emergency Plan of Action (EPOA)** will be available soon.

EVENTS TO DATE

- 
- End of February 2020:** The Turkish government announces that it will no longer stop refugees from attempting to cross by land or by sea into Europe. After this announcement, thousands of migrants congregate at the land border between Turkey and Greece. In response, the government of Greece and the EU step up border security
 - Early March 2020:** The IFRC President visits Greece to assess the scope of needs with the Hellenic Red Cross and raise attention to the critical situation of migrants and refugees in the country. CHF 500,000 are allocated from the IFRC's Disaster Relief Emergency Fund (DREF) as a loan to the Emergency Appeal launched the same day for CHF 20 million
 - 27 March 2020:** Following the announcement of the global COVID-19 pandemic, the Turkish government evacuates all remaining migrants at the border to reception centres or quarantine facilities as needed. As a result, the target population for this operation is drastically reduced
 - 12 August 2020:** IFRC issues the [revised Emergency Appeal](#) for CHF 7.3 million to continue assisting 55,500 people in Greece and Turkey.
 - 8-9 Sep 2020:** Fire destroys Moria camp on Lesbos Island in Greece, leaving some 11,000 migrants without shelter and basic lifesaving services.
 - 8 October 2020:** IFRC issues the revised Emergency Appeal no 2. for **CHF 11 million** (increased from CHF 7.3 million) to accommodate the response in Lesbos and continue assisting **66,000** people in Greece and Turkey.
 - August-September 2021:** Following the withdrawal of US troops from Afghanistan and the formation of a new government, scenarios around population movements out of Afghanistan are considered for revising preparedness plans, including in Greece.
 - 25 October 2021:** IFRC issues the revised Emergency Appeal no 3. for **CHF 12 million** to continue assisting **73,000** people in **Greece until September 2022, prepare for potential influx of people coming from Afghanistan and close the Turkey component of the EA.**

Situation overview

Overall Situation: Greece

General overview

In the first half of 2021, the recorded number arrivals of migrants to Greece was considerably lower than in previous years, mainly due to COVID-19 restrictions and strict nationwide lockdowns. As of 19 September 2021, the total number of arrivals to Greece was 5,786 with more arrivals by land (3,678) than by sea (2,108). The most common nationalities among newly arrived groups have been Afghanistan, Somalia and the Democratic Republic of Congo. Children represent over one-third of arrivals in 2021.

⁴ The migration program will be integrated into IFRC Greece the Country Operational Plan in line with the [IFRC three-year route-based approach to the humanitarian assistance and protection for people on the move](#) which aims at increasing IFRC's humanitarian assistance to migrants, displaced people and host communities on the migration routes of greatest humanitarian concern spanning Africa, the Middle East and Europe.



MAP 1. NUMBER OF ARRIVALS IN GREECE IN 2021, AS OF 3 OCTOBER 2021; SOURCE: IOM.

On 8 September 2020, a fire engulfed the Moria reception center on the Greek island of Lesvos. More than 11,000 people were transferred to a temporary camp where conditions were inadequate and unsafe to host vulnerable people. As of 20 August 2021, [4,254](#)⁵ people were still hosted in the Mavrovouni (Kara Tepe) camp while the Greek government is speeding up the necessary works and technical interventions to improve living conditions ahead of winter.

According to the MoMA (Ministry of Migration and Asylum) data (updated in July 2021) a total of 46,380 asylum seekers are hosted in refugee accommodation centers all over Greece. Some 6,600 refugees and asylum seekers currently reside on the Aegean islands. Of those, some 4,700 (71%) reside in the permanent and temporary Reception and Identification Centers (RICs). As of September 2021, Greece has granted asylum to 103,136⁶ people.

Decongestion of the islands remain a priority for the Greek government and the population in the Reception and Identification Centers (RICs) has dropped significantly. Although RICs are operating below capacity (for instance, Lesvos RIC is currently below 4,000 migrants) there remain real concerns about the living conditions of their residents. The hot spot approach⁷ has been reinforced through the EU Migration Pact and the new concept of closed and controlled camps known as Multi-Purpose Reception and Identification Centres (MPRICs)⁸.

While new arrivals remain minimal due to current border controls in place, concerns remain around the possibility of a new movement of Afghan refugees to Greece or through the migratory/transit route in Greece. On 27 September, IFRC launched [the Regional Population Movement – Afghanistan Emergency Appeal](#) where possible

⁵ <https://tinyurl.com/rfnw5zdy>

⁶ <https://data2.unhcr.org/en/documents/details/88966>

⁷ The 'hotspot approach' has been envisaged as a model of operational support by the EU agencies to the Member States such as Italy and Greece to facilitate the swift identification, registration, and fingerprinting of migrants arriving in Europe. In Greece, this approach is closely intertwined with the implementation of the EU-Turkey Statement (also known as the 'Deal'). Nearly 10,000 people are currently being held in five Greek islands 'hotspots', also known as Reception and Identification Centres (RICs).

⁸ The European Commission is supporting Greece with funds, to build closed and controlled camps known as Multi-Purpose Reception and Identification Centres (MPRICs), which are meant to provide a higher standard of accommodation than previous camps had, with portable cabins, running water, separated areas and, above all, more security. Samos camp, inaugurated at the end of September, is the first out of five MPRICs that the EU is building on east Aegean.

scenarios affecting neighboring regions are considered. In parallel, and in line with these preparedness efforts, the IFRC Country Delegation in Greece is working closely with the National Society to ensure preparedness measures are in place in the event of a new large-scale migration movement to Greece, partially through this Emergency Appeal funded operation.

Ensuring an effective response operation during the COVID-19 pandemic has required significant program adjustments, both in terms of programming and duty of care to the people targeted, volunteers, and staff. Despite the overall lockdown restrictions and challenges ranging from procurement of adequate Personal protective equipment and ensuring social distancing in crowded settings, many **urgent operational priorities were achieved as planned** (please refer to Red Cross Red Crescent response to date section for more details).

TURKEY – (activities considered under this Emergency Appeal are now concluded)

Starting from 27 March 2020, due to the evacuation of migrants from the Turkey side of the Greece-Turkey border area following the COVID-19 outbreak, it has not been possible to continue providing services on the ground.

Following these events, the Turkish Red Crescent focused its efforts on implementing preparedness activities in case of increased arrival and any possible mass crossings especially during the warmer months along the Greece-Turkey border as well as the Syria-Turkey borderline. Since April 2020, there has been very limited migratory movements along the mentioned border areas, and as of September 2021, there are no indications that circumstances similar to the ones of 2020 will re-emerge, therefore, it has been decided to conclude all operational activities after a sustained period of focused preparedness.

Summary of Red Cross Red Crescent response to date



MAP 2 GREECE AND TURKEY – OVERVIEW OF THE RESPONSE

GREECE

The **Hellenic Red Cross (HRC)** set up three mobile units near the Kastanies border in Evros to provide first aid and health-related services during the initial phase of the operation in March 2020⁹. At the request of the authorities, the HRC is currently operating mobile health units in four migration centres, three on the mainland, in Kleidi/Serres, New Malakasa, and Ritsona, and in Kara Tepe II Camp on *Lesvos Island* to provide general medical services and adequate medicine on a daily basis to all vulnerable migrants and refugees. In addition, the HRC is planning to extend its services to Nea Kavala Camp, with the same Mobile Health Unit (MHU) operating currently in Serres due to increased needs. HRC staff and volunteers are also conducting temperature checks for new arrivals as well as support to the National Public Health Authority for COVID-19 vaccination promotion, information, and interpretation for the patients' medical history and risks assessment.

Following the devastating fire that ripped through the Reception and Identification Centre in Moria, on the island of Lesvos in September 2020, Greek authorities set up a new temporary camp for migrants and refugees at Kara Tepe. HRC together with German and Danish Red Cross provided relief items, hygiene kits and tents to accommodate people in the new camp. HRC deployed a mobile health to provide medical support and immediate first aid to the residents of Kara Tepe as well as a restoring family links team in coordination with the International Committee of the Red Cross (ICRC), to assist those affected in communicating with their loved ones, providing stations for charging of mobile phones and access to Wi-Fi.

HRC is continuing to operate and provides services for vulnerable migrants and refugees in urban centres including 2 Multifunctional Centres (MFC) in Athens & Thessaloniki, a Mobile Health Unit in Athens, the Accompanied Referrals Programme¹⁰ (ACCREF) in Athens and their five Unaccompanied Minor Centres in Athens, Volos and Kalavrita, and Educational Health stations in Ambelokipoi and Kallithea.

Finally, HRC with the support of the IFRC, is conducting Cash Transfer assistance in the island of Lesvos, planned for 400 households in total.

Highlights of the Hellenic Red Cross response in Lesvos:



Cash assistance provided to **262 households** from the Lesvos local community.

7,350 individuals, residents of the Kara Tepe Reception and Identification Centre (RIC), reached with **WASH services**.



Hygiene kits distributed to **5,148 migrants** in the Kara Tepe RIC.



Out of the total 240 **tents** set up in the Kara Tepe RIC **151 still being used**.

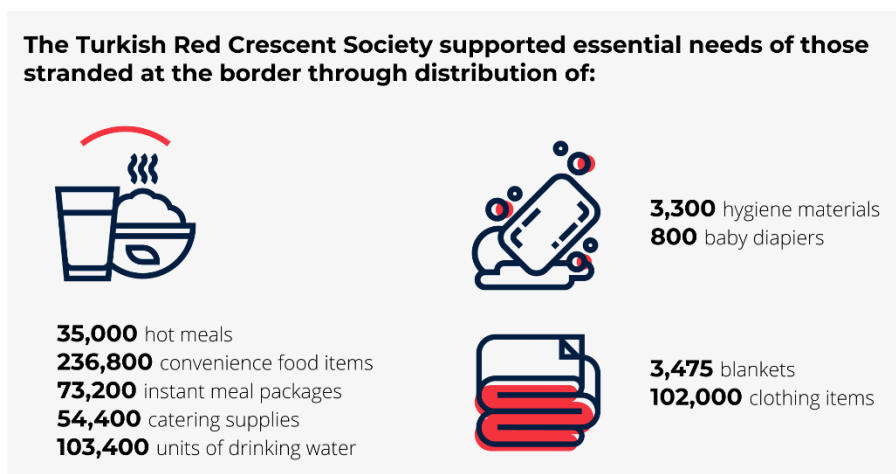
⁹ At the end of February 2020, the Turkish government announced that it would no longer stop refugees from attempting to cross by land or by sea into Europe. Since the announcement thousands of migrants were congregating at the land border between Turkey and Greece. In response, the government of Greece and the EU stepped up border security.

¹⁰ ACCREF is a team of cultural mediators trained on the Greek public health system structure and procedures, health terminology, interpretation and cultural mediation skills and detection of protection cases and support the migrants and refugees by guiding them through the relevant processes, reducing language barriers and building self-confidence and independence. The ACCREF Service of the Nursing Division also adapted its operation to the new needs of the pandemic with the provision of not only telephone interpretation to refugees and migrants hospitalized, but also interpretation with physical presence in the Health Services of the HRC. It has also expanded its opening hours to a 12-hour telephone support.

TURKEY - As of September 2021, all activities under this Emergency Appeal have been concluded

Prior to the evacuation of migrants to camps and reception centres on 27 March 2020, the Turkish Red Crescent Society (TRCS) supported essential needs of those stranded at the border through distribution of some 35,000 hot meals, 236,800 convenience food items, 73,200 instant meal packages, 54,400 catering supplies, and 103,400 units of drinking water. The National Society also distributed 3,475 blankets, 3,300 hygiene materials, over 800 baby diapers, and some 102,000 items of clothing. At the Pazarkule border crossing in Edirne, a mobile child-friendly space (CFS) was set up with games, painting and music activities, reaching some 920 children. Under Restoring Family Links (RFL), information activities were conducted in Arabic, Farsi and English through the distribution of brochures and support kits. TRCS also assisted 110 migrants requiring specific RFL services. Up to 1,755 people were provided with phone-charging facilities to communicate with their families. Up to 75 Psychosocial Support (PSS) sessions were also held in support of the migrant population requiring PSS services.

TRCS staff were trained or provided refresher training by the Public Health and Psychosocial Services department to ensure capacity for service delivery. In terms of community engagement and accountability (CEA), TRCS staff and volunteers disseminated information using brochures; face-to-face interaction, and on-the-spot briefings on health and safety as appropriate to the situation. They also interacted with community leaders to raise awareness of the situation. Under this appeal's plan and through its funding, IFRC supported the provision of masks and gloves and hygiene equipment, refreshments, fuel and maintenance of vehicles, accommodation for field staff/volunteers and migrants and refugees, and transport costs for migrants and refugees.



However, with the evacuation and the radical change in numbers of people at the border, TRCS was compelled to revise its response plans. Given the traditional increase of migration towards Europe during warmer months, and the easing of government restrictions on movement in Turkey due to COVID-19, as well as the continuing conflict in Syria and in case of new influx of people into Turkey from Syria, TRCS' revised focus moved towards ensuring preparedness for needs that could emerge for migrants moving towards Europe, as well as anticipated new arrivals from Syria into Turkey.

Preparedness and response activities to support migrants in Turkey (including potential Afghan refugees) are included in the IFRC Country Operation Plan for 2022. TRCS with the support of IFRC is focusing on contingency planning and increasing its preparedness and response capacity. Activities include preparation of emergency kits; strengthening coordination; enhancing protection; awareness raising and capacity building; know-how building and documentation; and advocacy.

A. THE OPERATIONAL STRATEGY

Key operational changes

The 9 months extension will allow the continuation of urgently needed assistance, while also building the foundations of a transition towards longer-term programming aimed at meeting the needs of migrants and refugees in an increasingly protracted situation. It will:

1. Ensure the continuation of migrants' support activities funded by the EA since 2020 in 4 camps: Mavrovouni Kara Tepe II camp in Lesvos Island, and Malakasa, Ritsona and Serres/Kleidi camps on the mainland.
2. Ensure the continuation of the Multi-functional Centres (MFC) in Athens and Thessaloniki, 5 Unaccompanied Minors Centres in Athens, Volos and Kalavrita, 2 Educational Health Stations in Athens (Ambelokipoi and Kallithea)¹¹ and ACCREF.
3. Ensure the continuation of the provision of health services through Mobile Health Units (MHU) in four migrant camps in mainland Greece (Ritsona, New Malakasa, and Serres/Kleidi), in the temporary Kara Tepe II camp on Lesvos Island and in urban area of Athens, expand the provision of health services, according to the needs, in the new Multi-Purpose Reception and Identification Centre in Samos, and plan to operate and provide similar services in Nea Kavala Camp, with the same MHU operating currently in Serres due to increased needs.
4. Allow to develop a comprehensive programmatic and resourcing strategy to address the protracted nature of the situation.
5. Enable analysis, contingency planning and prepositioning of relief items to anticipate a humanitarian response in relation to the deteriorating humanitarian situation in Afghanistan.

Needs assessment and targeting

During 2021, the humanitarian needs of migrants in Greece remain significant in various areas, including provision of shelter and winterization, health activities, drinking water in the camps, as well as lack of showers, latrines and hand-washing facilities, shortage of hygiene items, water tanks and lack of proper sewage management. Mental health services continue to be necessary as limited PSS activities or facilities are available.

The situation on the islands remains extremely alarming, despite the decrease in the levels of overcrowding in camps. Reception conditions prevailing in particular in the hotspot facilities remain dire. While the living conditions have been improved on the Aegean islands (i.e. Kara Tepe II, Lesvos), the main concern remains for the new model of closed and controlled camps (Samos and other 4 planned to be opened).

The decongestion of the islands combined with the lack of planning and new reception sites, as well as the COVID-19 lockdown measures resulted to the deterioration of conditions in camps located in the mainland. Around 40,000 people are hosted in overcrowding conditions, (Elaionas and Malakasa) isolated from the local communities (Ritsona, Koutsohero) and lacking essential services such as health services, water and proper sanitation.

Assessments conducted by the IFRC and HRC on the island of Lesvos have highlighted the difficult living conditions and challenges for persons with specific needs, such as with serious/chronic illnesses, persons with impairments and disabilities. Health services, first aid and mental health support have also been identified as key needs of the migrants living in the area of Kara Tepe (Mavrovouni) Camp.

In the second quarter of 2021, changes in the migrant's reception framework led to the closure of five Open Accommodation Sites (OAS) and the termination of the emergency hotel accommodation programmes for refugees and migrants. The Ministry of Migration and Asylum (MoMA) amended the financial assistance scheme

¹¹ EHSs are primary health care centres for migrants and refugees, unaccompanied minors and those without social security. They also assist the local population, including those on low incomes like pensioners. Their services include vaccinations, referrals to medical specialists, mother and childcare, provision of medicines and medical consultations.

to be limited to those physically present within the OAS, RICs, and Emergency Support to Integration and Accommodation (ESTIA) programmes. This amendment came into effect on 1 July, leaving a considerable number of self-settled asylum seekers unable to access such assistance.

Destitution and homelessness among refugee population still remain matters of concern especially following the decision of the Greek government in the first quarter of 2020 to stop offering accommodation and cash assistance once status has been granted. Limited integration and self-reliance opportunities mean that this leaves many recognized refugees destitute. This protection cuts will intensify the role that the HRC has to play within the Greek Society especially via the Multifunctional Centres in Athens and Thessaloniki.

The recent developments in Afghanistan have raised concerns about possible new arrivals to Greece and put Afghan nationals in Greece under growing pressure. The possibility of an increased number of arrivals has led to a particularly tense atmosphere for Afghan migrants and refugees and host communities in the islands. Action is needed to address the understandable concerns of local communities hosting refugees and migrants to avoid social tensions rising further. IFRC is closely monitoring the situation in Afghanistan and the region, with the view to ensuring appropriate contingency plans are in place to respond to new needs surfacing in Greece. An increased cross-border movement from Afghanistan is a potential scenario which on the medium term can also have an impact on the contexts along the way to Europe, including Greece. At the same time, careful attention to the changing needs of those already in Greece remains a priority.

Targeting

In Greece, the definition of target groups varies along with the nature of the activities and services provided. The selection of specific camps has been done in close dialogue with the Greek authorities, based on urgent needs and gaps in service delivery. The mobile health units cater for all migrants and refugees, while also providing special clinics for women and children. Health & hygiene promotion and distribution of hygiene kits has been provided for the entire population in the selected camps (New Malakasa, Kleidi/Serres, Ritsona, Samos and Kara Tepe on Lesbos Island).

The centres for unaccompanied minors cater for those who have been allocated a space following established national protocols. There are currently 65 long-term accommodation centres for unaccompanied minors in Greece, five of which are operated by the Hellenic Red Cross. Main countries of origin of UAM in Greece include Afghanistan (32%), Pakistan (22%) and Syria (12%).

The services provided at the Multifunctional Centres in Athens and Thessaloniki are accessible to all migrants and refugees; they can either make an appointment or drop in during opening hours. Last but not least, helplines are open to all and operate in a wide range of languages offering a variety of services, including information provision, interpretation and targeted referrals.

The target group added/estimated through this revision includes 4,000 migrants as of mid-September 2021, accommodated in the new Kara Tepe camp in Lesbos¹². Additionally, 400 vulnerable Households from the host community surrounding the camps on Lesbos will be targeted with multipurpose cash assistance, out of which 262 will receive cash transfer for 3 months (Sept-Oct-Nov 2021). HRC will continue to provide cash assistance for the most vulnerable aiming to reach the initial target of 400 HH by the end of June 2022.

¹² Detailed information regarding the situation in Kara Tepe/ Moria in October 2020

<https://reliefweb.int/sites/reliefweb.int/files/resources/Greece%20Update%2C%20Moria%20Fire%20Emergency%2C%202%20October%2020.pdf>

Coordination and partnerships

HRC is an active participant in several coordination mechanisms and networks that function on a national or regional basis, such as the national Protection Working Group, the Communication with Communities Working Group, the Child Protection sub-Working Group as well as in local coordination working groups that take place in the camps where HRC is operational. IFRC ensures continuous coordination and communication with partner National Societies active in Greece (including Austrian Red Cross, British Red Cross, German Red Cross, Netherlands Red Cross, and Norwegian Red Cross). At the new Kara Tepe temporary reception centre, all activities are closely coordinated with the Greek authorities, who lead coordination meetings with all actors on daily basis. In addition, formal and informal sector coordination meetings are organised with the support of major humanitarian actors active in each sector. Elsewhere, all migration services provided by the HRC are closely coordinated with the Greek authorities at national and local level, and mobile health units are deployed to migrant centres at the explicit request of the Ministry of Migration and Asylum.

At the operational level activities in each camp are also closely coordinated with IOM, which is supporting the Greek authorities in providing site management support with several partner organizations. In addition, there is close cooperation with UNHCR, especially in the framework of the ongoing cash program across all sites in Northern Greece and urban Thessaloniki. IFRC also coordinates regularly with the other NGOs collaborating in the migration programs, such as CRS and Metadrassi.

Turkey/ Greece Coordination

While activities in Turkey related to the Emergency Appeal have been concluded, IFRC country offices in Turkey and Greece together with the regional office in Budapest naturally continue to exchange information regarding the border situation, and changes in cross-border migratory movements. The IFRC supports the efforts of both National Societies to work more closely together to respond more appropriately and effectively should the situation shift. Beyond regular communication, efforts include situation analysis, identifying risks and providing early alerts, and drawing on best practices and lessons learned regarding operational issues, building on the 2020 HRC TRCS partnership agreement to further strengthen ongoing dialogue and to promote mechanisms for operational collaboration, contingency planning and exchange of experience.

Capacity analysis of the National Society in the country, risk analysis and scenario planning

Overview of the Hellenic Red Cross

Established in 1877, the Hellenic Red Cross (HRC) is the largest humanitarian organization in Greece, with 8 branches throughout the country, some 430 staff and around 5,000 active volunteers. It has a wide range of activities in the areas of health, social care, migration, search and rescue, disaster preparedness and response, restoring family links, and volunteer training. HRC formally adopted its Strategy 2020-2025 which sets out objectives and priorities for the next period. It focuses on humanitarian work across programme areas, such as primary health care, social care, migration, crisis & disaster management, protection, and community engagement and accountability, as well as organizational development, including structural reorganization, operational strengthening, capacity building and financial sustainability.

The Hellenic RC continues to operate vital mobile health units in migrant centres on the mainland, including Kleidi/Serres, Malakasa and Ritsona camp from early 2021, as well as on Lesbos (Mavrovouni), to cover the needs of newly arrived migrants. Following a specific request from the public authorities, preparations are well underway to provide similar services on Samos Island once the new Reception and Identification Centre (RIC) there is operational. Following the devastating fire which ripped through the Reception and Identification Centre in Moria and completely destroyed the camp, the HRC immediately mobilized its Lesbos branch and sent an assessment team from its national headquarters.

Furthermore, HRC runs two Educational Health Stations (EHS) in Athens. EHS are primary health care centres for migrants and refugees, unaccompanied minors and those without social security. It also assists the local population, including those on low incomes like pensioners. Its services include vaccinations, referrals to medical specialists, mother and childcare, provision of medicines and medical consultations.

The HRC Mobile Health Units provide general medical services daily to all vulnerable migrants and refugees. Services typically include a general pathological clinic with a general practitioner and nurses, a nursing station for the triage and monitoring of chronic patients, a pediatric clinic staffed with a pediatrician and nurses, a gynecology clinic and a dental clinic. The medical teams are supported by interpreters in key languages including Arabic, Farsi and French.

Scenario planning

The migration context in the region is both highly complex and volatile, and any scenario planning must consider a wide range of internal and external factors which may affect both the number and composition of people on the move as well as their main humanitarian needs. It must take into account current and potential future trends in the Eastern Mediterranean, geopolitical developments both in the European Neighbourhood and further afield, policy changes at national and regional levels, and the humanitarian space to access and support migrants.

In addition, the COVID-19 pandemic has already had a major impact on migration flows and access to services, while the socioeconomic impact is likely to be severe. Against this background National Societies must prepare for different scenarios and changing roles and expectations through a mix of strategic analysis and dialogue as well as contingency planning.

The National Societies' response to COVID-19 is supported through the IFRC global appeal, which is facilitating and supporting them to maintain critical service provision. IFRC continues to assess how emergency operations in response to disasters and crises should adapt to the pandemic and provides necessary guidance to its membership accordingly. National Societies take into consideration the evolving COVID-19 situation and the operational risks that might evolve and develop, including operational challenges related to timely access to the affected population, availability of items, procurement issues, and movement of National Societies volunteers and staff. For more information, please consult the COVID-19 operation page IFRC Go platform.

Operation Risk Assessment

Potential risk	Country	Probability	Mitigation measures
Increase of irregular migration in the coming year, particularly from Afghanistan and the neighboring countries	General	Moderate	Anticipating the context and preparing for new arrivals through proper contingency planning with local actors in Greece.
The COVID-19 pandemic continues to spread (including through new variants), and as a result, movement of people is further curbed by authorities	General	High	Updating Business Continuity Planning documents, continue to raise awareness of applicable measures. HRC to continue to conduct risk communication and community engagement measures and distribute protective equipment and essential supplies to vulnerable groups. HRC to continue to monitor and adjust its operations to address emerging needs.
Rise in community tensions and increased security risks.	Greece	Medium	Scale up CEA activities and information & awareness sessions with migrant and host communities. CASH activities for host communities and establishment of Humanitarian Service Points

B. PROPOSED AREAS OF INTERVENTION

As operations in Turkey have been concluded, the below list of activities describes operations in Greece exclusively. For a detailed description of concluded activities, please see the revised Emergency Plan of Action, the upcoming Operation Update and Final report, and the previous Operations Update¹³.

STRATEGIC SECTORS OF INTERVENTION



Health

People targeted: **30,775** (revised from 20,550)¹⁴

Requirements (CHF): **3,900,000**

Proposed intervention

Needs analysis

The Hellenic Red Cross has been requested by the Ministry of Migration and Asylum to deploy mobile health units, to cover the basic health care needs in recently established migration centres. With the aim of improving the health condition of vulnerable migrants and curb the spread of COVID-19, by providing ongoing general health services, HRC is assisting the migrant vulnerable population through **Health Teams** operating in the camps of: **Lesvos Island (Kara Tepe II)** and **Samos Island**, and on mainland in **Ritsona, New Malakasa and Serres/Kleidid** camps and planned to expand in Nea Kavala camp as well as in Attica with an urban Mobile Health Unit and two Educational Health Stations. Where needed, psychosocial support and/or referrals are being conducted. In addition, it supports migrants and refugees in urban areas for accessing public health services through accompanying them and providing interpretation services where needed (ACCREF).

Activities carried out and planned

- Provide primary health care services through Mobile Health Units in reception centres: New Malakasa, Serres, Ritsona, Lesvos Island (Kara Tepe II RIC) (**Ongoing**) and Samos (**New**). and planned in Nea Kavala Camp, with the same MHU operating currently in Serres due to increased needs. (**New**)
- COVID-19 awareness activities in the camp and promoting prevention measures, risk communication, supporting National Public Health Authority (EODY) in the COVID-19 vaccination campaign in the camps by providing the beneficiaries assisted by MHU with information about COVID-19 vaccination, preparing the lists for COVID-19 vaccination in some of the camps, as well as assisting beneficiaries with interpretation regarding their medical history and potential risk related to vaccination. (**Ongoing**)
- Ensure safe, sectoral referral mechanisms are in place for the most vulnerable people among the affected population. (**Ongoing**)
- Provide basic psychological first aid trainings to all staff and volunteers actively involved in the operation and in contact with beneficiaries – with a primary focus on Lesvos. (**Ongoing**)
- Provide primary health care through two educational health stations in Ambelokipi & Kallithea (**Ongoing**) and provide primary health care through a Mobile Health Unit in Attica urban area (**Ongoing**)
- Support migrants in accessing public health system through interpretation (**Ongoing**)
- **Provide Mental Health and Psycho-Social Support** (MHPSS, including Psychological First Aid (PFA) and referrals through mobile health units and core migration services. (**Ongoing**)
- Mainstream PGI and CEA and provide adequate response in case of identification (**Ongoing**)

¹³ The Operations Update no. 2 published on 22 February 2021 is available [here](#).

¹⁴ The initial targeted population at the beginning of the operation on 13 March 2020 was 20,550 people, and this has been overachieved: the total population reached until July 2021 is 23,466. The number of people targeted is thus being revised.

- **Provide Community Engagement and Accountability (CEA)** assistance in Lesvos and Ritsona. HRC has developed a feedback mechanism which is now available as a **standard feedback mechanism** in all Health programmes under EA. **(Ongoing)**; approximately 6,000 beneficiaries-residents of the Kare Tepe RIC have been reached with life-saving information and feedback mechanisms - **(Ongoing)**
- Satisfaction Survey is conducted on a monthly basis on beneficiaries visiting *the MHU in Lesvos*, Malakasa, Athens and Kallithea Nursing Station and Accompanied Referral programme (ACCREF) **(Ongoing)**
- Health assistance and health related services are planned to continue to be provided through mobile health units (MHU) **(Ongoing)**



Water, Sanitation and Hygiene

People targeted: 19,350 (revised from 12,900)

Requirements (CHF): 3,000,000

Proposed intervention

Needs analysis The Hellenic Red Cross will continue to distribute key hygiene items for all migrants and refugees in selected facilities, according to needs identified. It also organizes regular health & hygiene promotion including handwashing, oral hygiene, food hygiene, breastfeeding, environmental hygiene and waste management through its mobile health units in sites and shelters and educational health stations. The hygiene promotion sessions are delivered for specific groups (sex, age, language appropriate composition), After Moria fires in Lesvos camp in September 2020, WASH assistance has been provided jointly by IFRC Greece CO and the German Red Cross with the purpose of improving the living conditions of the migrant population in the camp. 7,350 beneficiaries, residents of the Kare Tepe RIC, have been reached with WASH services.

Water trucking and water distribution, shower facilities management, hand washing stations, hygiene promotion, have been provided in the camp until end of March 2021 and handed over to other actors in the field UNICEF and Watershed NGO for maintenance and continuation of the activities.

Activities carried out and planned:

- Water trucking - Drinking Water and Warm Water provided daily in the camp for 6 months (October 2020-March 2021) - **(Completed)**
- Development and implementation of hot shower facilities to support people to overcome the winter; **(Completed)**, showers for people with special needs **(Completed)**, providing baby bathing facilities in the female and male shower facilities. **(Completed)**
- Shower Facility Management: Up to 104 residents volunteering for the Red Cross were trained to run the shower facilities (providing beneficiaries with all necessary products, ensuring the showers are clean and function properly, etc.) **(Completed)**
- Providing Hand washing stations: 8 residents volunteers were trained to maintain, refill, monitor and run the handwashing stations around the camp. Regular handwashing sessions were conducted by the team as well, especially for children. **(Completed)**
- Hygiene Promotion: Up to 30 Camp residents volunteering for the Red Cross were trained as Hygiene Promoters covering all different communities in the camp. All HP material was developed in cooperation with the team and the communities. Artists from the camp have turned the key messages through drawings onto the paper. These works were printed on banners and hang throughout the camp for communication - **(Completed)**. Hygiene promotion will continue to be provided in the camps by HRC **(Ongoing)**.



Migration

People targeted: 55,000 (revised from 38,650)

Requirements (CHF): 2,100,000

Proposed intervention

Needs analysis

In addition to the specific health, WASH and PGI activities described and aimed at vulnerable migrants and refugees, the Hellenic Red Cross is also extending its well-established core migration activities to deal with additional needs and demands. The two Multifunctional Centres in Athens and Thessaloniki provide a centrally located and accessible entry point to Red Cross services for migrant communities; these include orientation sessions, help desk, social case work services, support in restoring family links, protection, accompaniment in accessing public services, multi-cultural dialogue and exchange, and language training.

The Hellenic Red Cross manages five accommodation centres for unaccompanied minors between 15 to 18 years old - one in Volos, three in Athens and one in Kalavrita - with a total capacity of 154 spaces. The centres provide accommodation, catering, personal hygiene items, clothing and footwear, as well as access to health and education services, psychosocial support, counselling and legal assistance, remedial teaching, learning Greek, and interpretation.

The migration context is evolving constantly and often rapidly in Greece and the wider region, and the Hellenic Red Cross will remain flexible and adjust its programs and services accordingly both to short-term operational demands and longer-term trends and changing needs.

The Social Welfare Sector of the Hellenic Red Cross runs programmes for the refugee population living in Greece focusing on two main pillars: reception and integration.

Activities carried out and planned

- Support migrants and refugees in Red Cross Multi-Functional Centres in urban areas in Thessaloniki and Athens through the provision of information, referrals, legal aid, case management, social work, integration activities, language training, help desks and mobile helplines **(Ongoing)**
- Support Unaccompanied Minors in five locations through Child Protection, recreational activities and material support **(Ongoing)**
- Accompany individual migrants and refugees accessing public health services through cultural mediation and translation (ACCREF) **(Ongoing)**
- Promote strategic review of current and future migration services provided by Hellenic RC in view of changing context **(Ongoing)**



Shelter and essential household items

People targeted: 4,440 (revised from 1,440)

Requirements (CHF): 1,000,000

Proposed intervention

Needs analysis

In Greece, shelter support (including winterisation items) has been provided in the new Kara Tepe camp on Lesbos to respond to the request of the Greek authorities. After Moria fires, a total number of 1,440 people were assisted with accommodation in tents provided by the German RC. Due to dire living conditions in the camp, especially during cold season, and with the accumulated delays in the construction of the new camp, which is estimated now to be open in spring 2022, authorities decided to undergo construction works aiming at improving the infrastructure of the current camp to offer better living conditions for the population that will be there for another winter.

Activities carried out and planned

- Lesbos Island: Provide 500 tents plus winterisation kits such as pallets for flooring, etc. **(Completed)**
- Replenishment of stock of blankets and sleeping bags for winterisation purposes. **(Completed)**
- Relief items to be stored (for 1,000 HHs) as reserve in HRC Athens warehouse to be dispatched in case of need to support the potential influx of the population in the camps with essential household items **(New)**



Livelihoods and basic needs

People targeted: 400 HHs (approximately 1,000 people)

Requirements (CHF): 310,000

Proposed intervention

Needs analysis

Hellenic Red Cross is providing Cash Assistance to the most vulnerable households from local community in Lesbos to address the socio-economic impact of the Covid-19 pandemic addressing the specific needs of the host communities surrounding previous Moria and current Kara Tepe II refugee camp.

Activities carried out and planned

- Provision of Multipurpose cash assistance to 400 vulnerable Households (HHs) and/or individuals selected according to strict criteria in local communities on Lesbos Island. **(Ongoing)**



Protection, Gender and Inclusion

People targeted: 6,000

Requirements (CHF): 150,000

Proposed intervention

Needs analysis

The Hellenic Red Cross has integrated protection, gender and inclusion as cross-cutting issues throughout its programmes and services. Last year alone more than 364 staff and volunteers were trained on protection principles (dignity, access, participation and safety), child protection policy and sexual and gender-based violence. They received appropriate guidance on how to address and manage protection concerns and risks and are able to identify and assess migrants and refugees with special needs through protection outreach, support and referral. An experienced IFRC PGI officer was supporting Hellenic Red Cross in Review PGI tools, protocols and related monitoring across programmes for the period: May 2020-March 2021

Activities carried out and planned:

- Identify and assess migrants and refugees with special needs through protection outreach, support and referral **(Ongoing)**
- PGI mainstreaming and capacity building for staff and volunteers **(Ongoing)**, PGI Awareness raising and production of relevant material addressing the target population **(Ongoing)**, review PGI tools, protocols and related monitoring across programmes. **(Ongoing)**
- (Lesvos): Conduct a joint in-depth PGI assessment (HRC and IFRC) of specific needs of the affected population. **(Completed)**
- (Lesvos): Integrate PGI minimum standards on IFRC/HRC planned operations and activities in the new Kara Tepe camp (e.g. WASH and hygiene promotion, shelter, health, NFI distribution) **(Ongoing)**
- Support sectoral teams to include measures to enable protection and safe access to services. **(Completed)**

ENABLING ACTIONS

Strengthening National Societies

Requirements (CHF): 700,000

For the current operation, the main focus in Greece has been supporting the Hellenic Red Cross in strengthening its capacity for crisis response, including contingency planning and increasing the capacity of the National society fleet through purchasing a new vehicle. Technical staff based in the IFRC Greece country office as well as Regional Office for Europe (such as Disaster and Crisis, Information Management, Community Engagement and Accountability, Protection, Gender and Inclusion, Planning Monitoring Evaluation and Reporting, National Society Development, Youth and Volunteering and Health specialists) will continue supporting the National Society in the development and implementation of the operation through the provision of technical advice, methodological tools, training, when necessary.

Activities carried out and planned

- Update contingency plans for population movement **(new)** and pandemics **(Ongoing)**
- Carry out formal Preparedness for Effective Response (PER) review and support follow up and capacity development activities in selected branches (such as Lesvos) **(planned)**
- Support HRC to have capacity to ensure the mental and emotional well-being of frontline staff and volunteer using the Caring for Staff and Volunteer Approach (developed by IFRC Reference Centre for

Psychosocial Support) with a primary focus on the operations in the camps (Lesvos, Serres, Malakasa, Samos and Nea Kavala). **(new)**

- Procure light 2.5 MT and 7 MT truck for relief distributions, repair 12 MT truck and ensure maintenance and support **(Ongoing)**
- Contribute to programme management capacity at Hellenic Red Cross HQ, including migration, finance, procurement, HR and admin functions related to the current operation and including active engagement of relevant branches. **(Ongoing)**

Strengthening Coordination and Accountability

Requirements (CHF): 620,000

The National Society and IFRC operational and administrative support and office costs are included in the operational budget. The management of the Emergency Appeal will be supported by the IFRC in terms of transparency and overall coordination. Surge support to the country office in Greece will be ensured as needed in the areas of CEA, migration, IM, disaster and crisis preparedness and for overall operation coordination.

Activities carried out and planned

- Ensure effective IFRC support in management, finance and admin areas **(Ongoing)**
- Carry audit project financial audit **(Planned)**
- Carry out final evaluation of the operation **(Planned)**
- Surge Deployment for an Ops Manager to Greece **(Completed)**
- Recruitment of a long-term programme coordinator at Greece country office **(Completed)**
- Recruit WASH coordinator for Lesvos response **(Completed)**
- Translate/adapt CEA and PGI guides and tools and facilitate CEA training for staff and volunteers **(Ongoing)**.

Security:

The IFRC security plans will apply to all IFRC staff throughout. IFRC has conducted a country Security Risk Assessment for its operations country-wide which includes and affects any staff deployment; risk mitigation measures have been identified and implemented. All IFRC personnel, and RC/RC staff and volunteers have been encouraged to complete the IFRC Stay Safe e-learning courses, i.e., Stay Safe Personal Security, Stay Safe Security Management and Stay Safe Volunteer Security online training.

Influencing others as strategic partners

Requirements (CHF): 220,000

IFRC is continuing this work through ongoing humanitarian diplomacy, joint advocacy with the HRC, strengthened communication and influencing strategies, promoting digital transformation and ensuring a strong IFRC network voice at major inter-governmental and inter-agency events.

Activities carried out and planned

- Support HRC with communications and public advocacy resources and advice to increase impact, public trust and understanding of its role and activities **(Planned)**
- Development of persuasive evidence for Humanitarian Diplomacy and public influencing **(Planned)**
- Develop harmonized information management tools, indicators, planning and reporting systems for migration programmes (Protection Roadmap, PSEA, PGI training and support materials, Child protection) **(Ongoing)**
- Contribute to long-term resource mobilization, communication and strategic positioning for migration programmes **(Planned)**

C. FUNDING REQUIREMENTS

GREECE – POPULATION MOVEMENT

Funding requirements - summary

Area of Intervention	Needs in CHF
SHELTER	1,000,000
LIVELIHOODS AND BASIC NEEDS	310,000
HEALTH	3,900,000
WATER, SANITATION AND HYGIENE	3,000,000
PROTECTION, GENDER AND INCLUSION	150,000
MIGRATION	2,100,000
STRENGTHEN NATIONAL SOCIETIES	700,000
STRENGTHENING COORDINATION AND ACCOUNTABILITY	620,000
INFLUENCE OTHERS AS LEADING STRATEGIC PARTNERS	220,000
TOTAL FUNDING REQUIREMENTS	12,000,000

all amounts in Swiss Francs (CHF)

Contact information

For further information, specifically related to this operation please contact:

In the Hellenic Red Cross Society

- **Head Director:** Angelica Fanaki, HRC International Cooperation, Organisational Development & Programs Sector, M + 30 6936695925, angelica.fanaki@redcross.gr

In the Turkish Red Crescent Society

- **Programme Coordinator:** Kamil Erdem Güler, Community-based Migration Programme, M +90 312 293 6033, kamil.guler@kizilay.org.tr

In the IFRC

IFRC Country Office, Turkey

- **Ruben Cano**, Head of Country Office, M: +34 605 750 026, ruben.cano@ifrc.org;
- **Shafiquzzaman Rabbani**, Programme Coordinator, M: +90 537 395 2845, shafiquzzaman.rabbani@ifrc.org

IFRC Country Office, Greece

- **Jessie Catherine Thomson**, Head of Country Office, M: + 30 6957508929, jessie.thomson@ifrc.org
- **Lorenzo Violante** Programme Coordinator, Email: lorenzo.violante@ifrc.org

IFRC Regional Office for Europe:

- **Alma Alsayed**, Operations Coordinator, Regional Office for Europe, M +36 70 430 6511, alma.alsayed@ifrc.org
- **Andreas Weissenberg**, Head of Disaster and Crisis. (Prevention, Response and Recovery), andreas.weissenberg@ifrc.org
- **Andrej Naricyn**, Head of Partnerships and Resource Development, andrej.naricyn@ifrc.org

IFRC Geneva:

- **Antoine Belair**, Senior officer - Operations Coordination, Disaster and Crises (Prevention, Response and Recovery); email: antoine.belair@ifrc.org

Reference documents

↳ Click here for:

- A. [Previous Appeals and updates](#)

How we work

All IFRC assistance seeks to adhere the **Code of Conduct** for the International Red Cross and Red Crescent Movement and Non-Governmental Organizations (NGO's) in Disaster Relief, the **Humanitarian Charter and Minimum Standards in Humanitarian Response (Sphere)** in delivering assistance to the most vulnerable, to **Principles of Humanitarian Action** and **IFRC policies and procedures**. The IFRC's vision is to inspire, encourage, facilitate and promote at all times all forms of humanitarian activities by National Societies, with a view to preventing and alleviating human suffering, and thereby contributing to the maintenance and promotion of human dignity and peace in the world.

Jagan Chapagain

Secretary General
