


www.ifrc.org
Saving lives,
changing minds.

Operation Update Report

Kenya Drought and Food Security

 International Federation
of Red Cross and Red Crescent Societies

Appeal No: n° MDRKE049	Operations Update n° 1 Date of issue: 17/11/2021	Timeframe covered by this update: 12/08/2021 – 20/10/2021
	Operation start date: 12/08/2021	Operation timeframe: 18 months End date: 09/03/2023
Glide No: DR-2021-000111-KEN	IFRC Funding requirements: CHF 8,000,000	DREF amount initially allocated: CHF 369,354
Red Cross Red Crescent Movement partners currently actively involved in the operation: International Federation of Red Cross and Red Crescent Societies (IFRC), British Red Cross, Danish Red Cross, Finnish Red Cross, Italian Red Cross and Norwegian Red Cross Society.		
Other partner organizations actively involved in the operation: National and County Government line ministries and agencies, National Disaster Operations Centre, the National Disaster Management Unit, the National Drought Management Authority, WFP.		

Please click [here](#) for the Interim Financial Report and [here](#) for the Contacts

A. SITUATION ANALYSIS

Description of the disaster

According to the latest [Famine, Early Warning Systems Network](#) updates the Horn of Africa region faces its third consecutive below-average rainfall season since late 2020, which will likely intensify ongoing drought and significantly worsen food insecurity through at least mid-2022. Based on rainfall estimates through October, the delayed start of October-December short rains is likely to place October 2021 to be among the driest on record in eastern Kenya. The cumulative rainfall is likely to be less than 60 percent of average in northern and eastern Kenya, and 60-75 percent of average in central Kenya.

According to the latest [Integrated Food Security Classification](#) analysis (IPC) an estimated 2.1 million people (14% of the population in Arid and Semi-Arid Lands (ASAL)) are experiencing high levels of acute food insecurity (IPC Phase 3 or above) between July and October 2021. In the projection period (November 2021 to January 2022), the population in Crisis (IPC Phase 3 or above) is also expected to increase to 2.4 million people. This will include an estimated 368,000 people in Emergency (IPC Phase 4) and 2 million people in Crisis (IPC Phase 3), Most of the population affected are in eight counties: Baringo, Garissa, Isiolo, Mandera, Marsabit, Tana River, Turkana and Wajir, which are regions with predominantly pastoral livelihoods.



*Drought Assessment in Northern Kenya,
Photo courtesy of KRCS*

On September 8th, the Government of Kenya declared the drought a national disaster and instructed The National Treasury and the Ministry of Interior and Coordination of National Government to spearhead Government efforts to assist affected households including water and relief food distribution as well as livestock uptake. The Government also noted that more details of the comprehensive drought mitigation measures would be unveiled in due course.

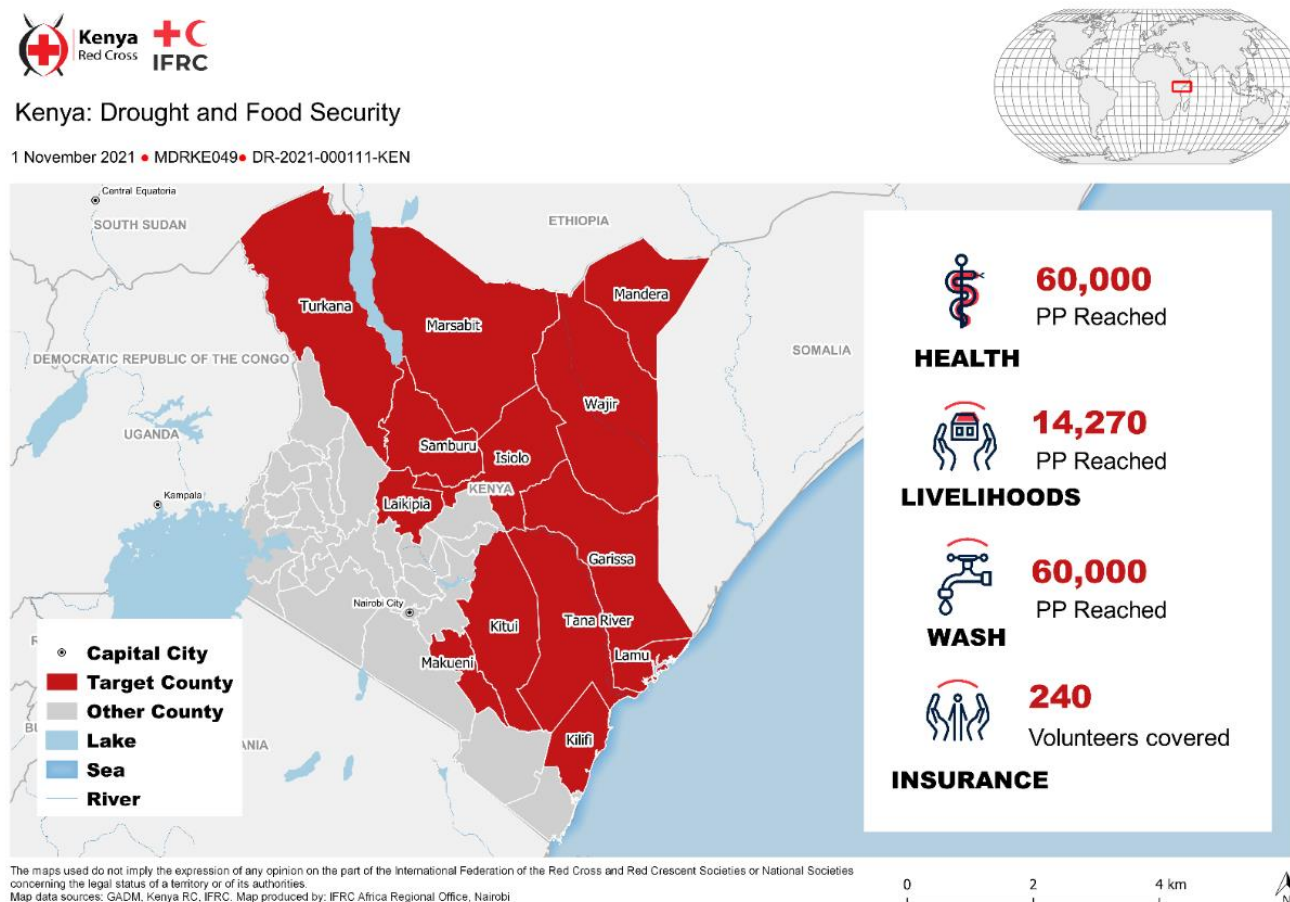
The above highlights the urgent and critical need for further funding to be able to appropriately and timely respond to critical needs and mitigate the impacts of the expected prolonged drought conditions. To date, the Emergency Appeal, which seeks CHF 8 million, is only 8% funded. The dire food insecurity situation is projected to persist until at least into the first quarter of 2022, especially in marginal agricultural and pastoral areas.

Summary of current response

Overview of Host National Society

A DREF was launched on August 17 and subsequently scaled up to an Emergency Appeal on September 09, 2021.

Overview of the activities carried out during the reporting period with support from Emergency Appeal and Bilateral funding are shown in the infographic:



Overview of Red Cross Red Crescent Movement in-country

The IFRC with the support of the Canadian Red Cross supported KRCS in conducting a Food Insecurity and Livelihoods assessment in Mandera, Kilifi, Samburu, Turkana, and Makueni countries. The assessment was finalised by the end of October and will inform upcoming implementation. The British Red Cross has pledged to support Food Security and Cash interventions in Makueni and Samburu counties. KRCS are coordinating with ICRC regarding support for Cash, WASH and Health interventions in Mandera and Garissa Counties.

The IFRC and Kenyan Red Cross would like to thank the following partners for their contributions to the Emergency Appeal: Canadian Red Cross, Finnish Red Cross, Japanese Red Cross, and Netherlands Red Cross, and British Red Cross for their bilateral contributions.

Overview of other actors' actions in-country

Other actors have been undertaking actions to support affected communities in the counties. Specific actions undertaken include:

- Following the declaration of drought as a national emergency, the government announced the release of 2 billion KES (approximately 18 million USD) to mitigate the impact of the drought, in addition to the 1.7 billion KES (approximately 15.3 million USD) earlier announced for food assistance.
- The National Government has rolled out general food distribution in affected counties of Wajir, Marsabit, Turkana, Baringo, Mandera, Garissa, Samburu, Isiolo, Lamu, Kitui, Makueni, Kwale and Kilifi

- Across Turkana, Marsabit, Wajir, and Mandera counties, over 100,000 food-insecure households continue to receive bi-monthly cash transfers equivalent to 40 percent of 2100 kcal daily requirement through NDMA's Hunger Safety Net Programme (HSNP) (with each household receiving KES 5,400 every two months).
- The county governments of Turkana, Marsabit, Mandera, Wajir, and Baringo have been undertaking in-kind food distribution targeting areas where IPC 3 and IPC 4 outcomes are being reported. Food distribution has supported communities to cope with the negative effects of the ongoing drought and food insecurity situation.

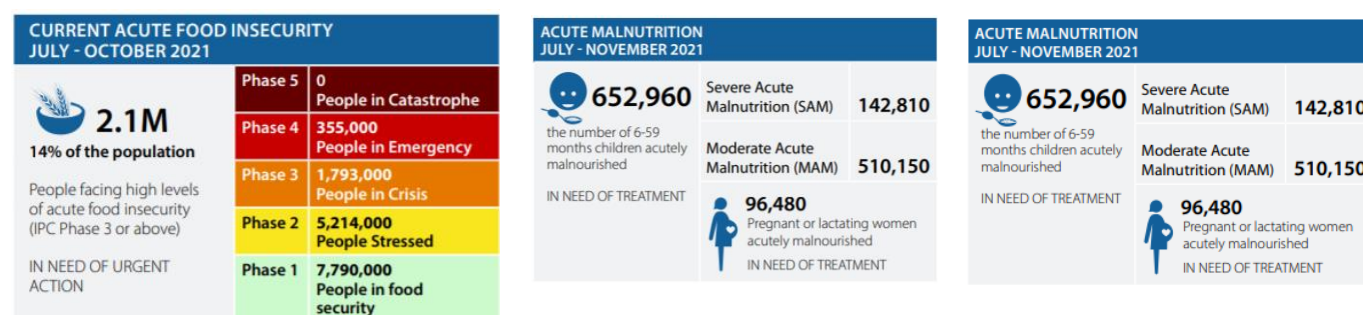
A [FLASH Appeal](#) was launched in September from Oct to Dec 2021. \$139.5 million was requested by humanitarian organizations through the Appeal, upwards of \$28.5 million has already been mobilized by international partners, including a \$5 million contribution from the United Nations Central Emergency Response Fund (CERF). With basic needs identified as:

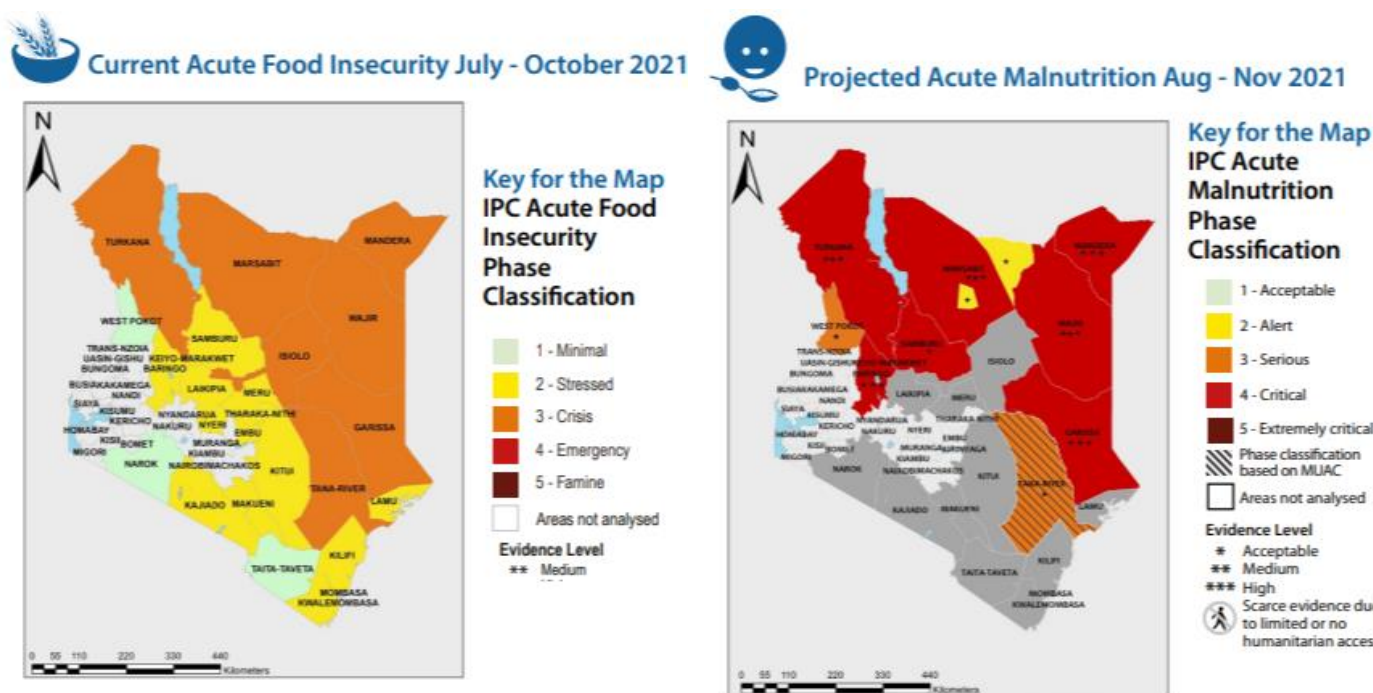
- There are now at least 2.1 million people who are severely food insecure and adopting irreversible coping strategies to meet their minimum food needs, and this is expected to rise to nearly 2.4 million people from November 2021.
- Livelihoods have been severely impacted by the multiple shocks that communities have endured over the past year
- Over 465,200 children under 5 and over 93,300 pregnant or lactating women are acutely malnourished in the ASAL region
- Access to water is an urgent concern for both humans and livestock
- With pastoralists having to walk long distances in search of water, food and forage for their livestock, tensions among communities have risen and an increase in inter-communal conflict has been reported
- Women, children and elderly people are often left behind in their villages, as men travel to access water, food and forage, heightening the risks of family separation, violence, exploitation, abuse and school dropouts
- Most ASAL areas have reported disease outbreaks, including due to reduced availability of safe water sources and lack of access to improved sanitation and hygiene services
- Looking ahead, with the 2021 short showers of rain expected to be below average, the drought crisis is expected to escalate. It is therefore imperative to act now.

Other actions include WFP supporting households with food assistance in Turkana, Marsabit, Garissa, Mandera and Baringo counties. The [Kenya Food Security Outlook October 2021 to May 2022](#) reports that due to funding shortfalls, WFP is reducing food rations from 60 percent to 52 percent of the daily 2100 kcal full ration for 440,000 refugees in Kenya from October through December. Multiple other agencies are supporting and being coordinated via the OCHA and the Kenya Humanitarian Partnership Team (KHPT) and reported here [Kenya - Arid and semi-arid lands drought response dashboard \(January - September 2021\)](#).

Needs analysis

According to the latest [Kenya Food Security Outlook October 2021 to May 2022](#) and the latest [IPC analysis for Kenya](#):





- In the pastoral areas, declining forage and water resources continue to intensify atypical livestock migration as herders search for better rangeland resources. Increased trekking distances to water and poor pasture conditions are resulting in declining livestock body conditions and increased reports of resource-based conflicts.
- As household food stocks dwindle in the marginal agricultural areas, the late onset of the short rains has delayed land preparation and planting and reduced household access to income from agricultural labor.
- Poor households are likely to increase their reliance on casual labor, petty trade, and the sale of firewood/charcoal to earn income, but increased competition and high staple food prices will likely limit household purchasing power.
- Household water availability continues to decline as return trekking distances increase and water resources gradually get depleted. Household return trekking distances range from 8.4-14 kilometers, except in Isiolo, where the return trekking distance is 4.1 kilometers.

The key findings of the KRCS Food Security & Livelihoods (FSL) Assessment carried out in the affected counties of Makueni, Samburu, Kilifi, Mandera, and Turkana are below and included in Section C:

Livelihoods and Basic Needs:

- The three key indicators that the assessment followed were food consumption score (FCS), coping strategies index (CSI) and household dietary diversity score (HDDS). The FCS as measured during the September assessment puts a total of 12% of the population in the food security poor category and 43% in the borderline category.
- The assessment showed that the means of livelihood have been heavily degraded. Due to the ongoing drought, in places, there is a total crop failure, and their livestock is experiencing emaciation and deaths.
- The assessment showed that other livelihood strategies have been adopted as coping mechanisms by the pastoralist communities, such as charcoal burning and firewood selling as socio-economic activities. Farm labour opportunities are not available as there is no work ongoing in the fields. Most of the households have reduced the number of eating in a day even to the extent of not eating for a whole day or even more days.



Walking long distances in search of water and pasture in intense dry heat is taking a toll on animals. Many Camels, goats and cattle are collapsing to death along the way.

Health:

- According to the FSL Assessment Report, there have been substantive shortages of therapeutic and supplementary commodities in the year ending 2020 as a result of the COVID-19 pandemic. This has then led to stunting growth rate is at 23%, Global Acute Malnutrition (GAM) rates at 25.6% and the underweight is at more than 33%.
- Most ASAL areas have reported disease outbreaks, due to reduced availability of safe water sources and lack of access to improved sanitation and hygiene services. Since 23 May 2021, at least 36 suspected cases of cholera have been reported in Garissa (Dadaab Refugee Camp) and Turkana counties according to WHO, in addition to active outbreaks of measles in endemic areas of West Pokot and Garissa, and a new flare-up of vector-borne kala-azar in Wajir since January 2021. Upper respiratory tract infections have steadily increased across all drought-affected areas since January and malaria is rising in Turkana and Samburu counties (OCHA).
- There is a need for community-based active disease surveillance, hygiene and sanitation promotion in communities, health outreach and screening to avert any possible outbreak of diseases or to address an increase in Non-Communicable Disease (NCD) incidence as well as coordinate the much needed MHPSS support. Furthermore, integration of nutrition services in integrated health centres for Under 5s and Pregnant and Lactating Women should be scaled up, alongside promotion of Infant and Young Child Feeding practices and breastfeeding continuity and ensure appropriate nutrition for pregnant women, individuals with special nutrition needs like older persons above 60 years, persons living with HIV, persons affected by NCDs like diabetes, hypertension, chronic obstructive pulmonary diseases and cancer) and persons with disabilities

WASH:

- Household water availability remains constrained following the low recharge of most open water sources such as rivers, ponds, water pans, and dams. According to the NDMA [Drought Bulletin for September 2021](#), there has been increased drying out of 57 strategic water boreholes. In the pastoral areas, surface water sources have dried up, with groundwater sources and rivers currently the only available sources for households ([FEWS.net](#)).in the surrounding areas There is a need for assessment and rehabilitation of community water systems that are broken down and have adequate capacities to serve in areas affected by drought to ensure that communities have to access to safe water. Affected communities require distribution of water treatment chemicals to promote household water treatment and prevent outbreaks of waterborne diseases.



Community members walk long distances and sometimes the animals are weak from thirst and have to be dragged to the water points

- Trekking distances to and from water sources for both livestock and communities have increased significantly especially in Samburu, Isiolo, Mandera, Tana River, Turkana, Mandera, Wajir, Garissa and Baringo counties.
- Pasture and browse conditions are poor with Marsabit, Turkana, Kilifi, Tana River, Isiolo and Samburu counties among the worst affected, where pastoral livelihood zones are at alert to alarm phase, trending to a worsening situation.

Protection, Gender and Inclusion:

- Due to increasing protection risks for communities including special groups such as women who face a heightened risk of sexual exploitation and abuse, there is a need for gender and protection to be mainstreamed into the proposed action by ensuring the selection criteria is based on vulnerabilities such as disabilities, age, gender and health conditions of the drought-affected communities to protect affected communities.

Targeting

Through this reporting period, KRCS aimed to support the four (4) affected counties; **Turkana, Garissa, Wajir and Marsabit** which have at least 5% (60,000 people 10,000 HH) of their population in IPC 4. Assistance has targeted the worst affected sub-counties in the above-affected counties which are currently not supported by any partner. Specific sub-counties to be supported will be reached through discussion with the County Steering Group (CSG). KRCS conducted gap analysis taking into consideration actions by other actors targeted populations not covered by other assistance. Specific sub-counties to be targeted include Turkana North and Turkana East in Turkana County, Lagdera in Garissa County, Eldas, Wajir West and Wajir South in Wajir county, and Laisamis, and North Horr in Marsabit county. Most of the population in these sub-counties are livestock farmers who depend on good milk and meat production. These sub-counties are among the worst affected areas in the targeted counties with IPC 4 levels.

Beneficiary identification and selection processes have been community-centred and led. The process has ensured the use of selection criteria that are inclusive and only the most vulnerable and deserving communities are reached. Community committees have been involved through the process of setting out the beneficiary selection criteria and choosing the beneficiaries, to ensure that only the most vulnerable person/households benefit. Through a community-based targeting approach KRCS targeted the most vulnerable for cash transfers. These have included widows or divorced women heads of households with children under 5 years; pregnant or lactating mothers with children under 5 years; widows or divorced women-headed families with no source of income; families with severely malnourished children or children (under 5 years); households headed by people living with disabilities with no source of income; and children-headed households. Due to the continuing COVID-19 Pandemic in Kenya, KRCS staff and volunteers have ensured full compliance with the ministry of health guidelines and protocols to curb the spread of the virus.



Rehabilitated water systems in Garissa County with additional water storage facilities.

National Society Development

The effective response of Kenya RCS is highly dependent on the strength and capacity of its operational and coordination systems including strength of its branches. This include capacity of responders who are volunteers and youth members of the movement whose capacity is key to delivery of effective humanitarian services. To enhance this capacity, Kenya RCS will train, insure and motivate its volunteers during the response to ensure their enhanced capacity and duty of care. Kenya RCS will also conduct workshops for its governance structure at the branches to ensure that they are able to effectively execute their oversight role over management and operations for continued accountability. Kenya RCS also plan to enhance its infrastructural establishment in the respective branches and establish systems that will enhance the branches responsiveness during and after current intervention.

Operation Risk Assessment

Conflict and security: Across all counties, there is intra-and inter-county migration to areas with better forage and water resources. In some cases, cross-border migration has resulted in conflicts over resources. The most significant incidences of conflict were along the border of Wajir and Isiolo. However, in Turkana and Marsabit separate incidences of since March and June, respectively, has displaced over 6,000 households, closed schools and health facilities (80 percent of facilities have reopened). There have also been reports of cattle rustling and banditry across pastoral areas.

Atypical livestock migration is expected to intensify from September through October and from December until the beginning of the 2022 March to May long rains. The intensified migration is expected to increase incidences of resource-based conflicts that will disrupt market functions, schooling activities, access to health facilities and services and disrupt livelihood activities ([FEWS.net](https://www.fews.net)). Sporadic conflict in some counties (Baringo, Marsabit and Isiolo) has also disrupted livelihoods and contributed to food insecurity, and scarcity of water is raising concern of the potential for increased resource-based conflicts between communities.

The security situation in the targeted counties should be continuously monitored, to ensure the safety of staff, volunteers and the targeted communities.

COVID-19 Pandemic: The COVID-19 pandemic continues to pose a threat to the general population of Kenya, as well as an operational risk to staff, volunteers and targeted communities of this Emergency Appeal intervention. The fourth wave, which peaked in August 2021 is currently at its lowest rate of transmissions since its upsurge. As of October 02, 2021, there have been a total of 253,310 confirmed cases in Kenya ([WHO](https://www.who.int)). According to the Ministry of Health [Immunization Status Update](#) from October 31st, a total of 5,321,880 vaccine doses have been administered, meaning that 6% of the adult population of Kenya has been fully vaccinated.

Operational capacity risk: The response will be implemented concurrently with the other response activities that Kenya RCS are currently involved in such as COVID-19, floods, conflicts and other response activities which is likely to put a lot of pressure on the National Society systems. In mitigation of such risks, the National Society integrates its response activities to its core systems such that any capacity requirement and pressure will easily be absorbed.

B. Operational strategy

KRCS aims to support 500,000 people (100,000 households) in the most affected counties which have at least 5% of their population in IPC 4 as per the Kenya Food Security Steering Group classification. Assistance will be targeted at the worst affected sub-counties in the above-affected counties which are currently not supported by any partner.

As income to the Appeal and bilateral funding is limited KRCS are prioritising their sectoral areas and locations of intervention through coordination with the national sector-specific action plans and continue to review their strategy based on information from forecasts by the Kenya Meteorological Department (KMD), Kenya Food Security Steering Group (KFSSG) Long and Short Rains Impact Assessments, the National Drought Management Authority (NDMA) Bulletins, and nutrition sector Standardized Monitoring and Assessment in Relief and Transition (SMART) Survey reports.

KRCS will:

- Participate in nutrition SMART surveys, as well as Long Rains Impact Assessment for the March April May Rains 2021.
- Monitor drought situation and undertake relevant detailed assessments, in areas showing rapid deterioration in the drought situation.
- Continue to coordinate with the two levels of government and update the Movement partners on the progress being made in curbing the effects of drought.
- Support Capacity Strengthening of the branches where the responses will be coordinated from.

Currently based on the income to date KRCS have prioritised Wajir, Kilifi and Garissa Counties.

C. DETAILED OPERATIONAL PLAN

Livelihoods and basic needs		
People reached: 15,000		
Male: 7,350		
Female: 7,650		
Outcome 1: Communities, especially in disaster and crisis-affected areas, restore and strengthen their livelihoods		
Indicators:	Target	Actual
Number of people reached with livelihoods and basic needs support	25,000 HH / 125,000 ppl	3,000 HH / 15,000 ppl
Output 1.1: Basic needs assistance for livelihoods security including food is provided to the most affected communities		
Indicators:	Target	Actual
Number of counties that have conducted inception meetings	12 counties	3
Number of people reached through cash assistance	15,000 HH	2,000 HH
Number of people that have received in-kind food distributions, when cash assistance has not been feasible	10,000 HH	1,000 HH
Output 1.3: Household livelihoods security is enhanced through food production and income-generating activities		
Indicators:	Target	Actual
Number of households that have received drought-tolerant seeds	6000 HH	Subject to funding
Number of counties conducting periodic disease surveillance, treatment, and vaccination of livestock	10 counties	Subject to funding
Progress towards outcomes		
County Inception Meetings: Three counties of Wajir, Kilifi and Garissa have so far conducted inception meetings, however, the remaining nine counties are yet to conduct these meetings based on the availability of funding. It is important to note that if the inception meetings are conducted yet the implementation delays due to inadequate funds, it may result in mistrust between the stakeholders/partners and the community members, which is why inception meetings are pending further funding.		
Assessment: With support from IFRC, the KRCS undertook food security and livelihood assessment in Mandera, Kilifi, Samburu, Turkana and Makuani Counties targeting the sub-counties with alarming drought situations. The teams in each of the counties were composed of KRCS volunteers, staff and government staff who were engaged to		

conduct Focus Group Discussion (FGDs) and household Interviews and Key informant interviews. The assessment was finalised by the end of October, and the key findings have been presented in the needs assessment above.


Cash assistance: Direct cash assistance (KSH 5,000 per HH) to improve the purchasing power amongst food insecure households to increase access to food (increase meal frequency). KRCS has done an assessment and distributed cash to 2,000 households in three counties: 500 in Wajir, 750 in Kilifi and 750 in Garissa counties.

During the various food security assessments, communities expressed a clear preference for cash as the most effective modality to deliver assistance due to its flexibility, offering communities choice, ability to enhance other economic activities due to the multiplier effect, its ability to support communities to repay any debts they have with shop owners and supporting savings by communities aside from supporting the immediate community needs. Cash feasibility was done in the three counties before targeting and registration was done to the communities. KRCS has plans to continuously assess the rest of the counties which are drought-stricken.

In-Kind food distribution is carried out in areas where cash is not feasible. These areas had no markets where the community could buy commodities in case cash assistance was there and also, they were so remote for them to access cash transfer values. This targeted 1,000 households from two counties, Turkana and Lamu counties, that targeted vulnerable communities with the elderly, pregnant and lactating mothers, people living with disabilities and the poor in the community. Commodities distributed included cereals (mainly rice or maize meal), pulses (pulses mainly green grams or beans), cooking oil and salt. Each family was entitled to the ration which represented 50% of the household food ration per month, comprising of Cereals – 41kg per household; Pulses – 7kg per household; Cooking Oil – 3 litres; Salt – 0.5kg. These foods were distributed during September and early October to the communities since they are still experiencing the effects of drought. The challenge with the food distribution were the transportation of food commodities to these remote areas with poor road networks, however, the KRCS fleet has trucks that were able to get to these areas although this slows down the response time.

For the upcoming months, the prioritized activities are market assessment & CVA targeting 15,000HH in Kilifi, Isiolo, Garissa, Wajir, Marsabit, Samburu and Mandera. In-kind food distribution targets additional 20,000 households in areas where cash is not feasible.

Community Engagement and Accountability (CEA): KRCS has a complaints and feedback handling guideline that is operational during the responses and throughout interventions. The channels used to raise complaints include the toll-free line set up at the KRCS headquarters, regular community review meetings with the community and dedicated phone lines at the county branches and community focal points. The communities have indicated that they prefer the toll-free line and community review physical meetings with the project officers and focal persons.

	Health People reached: 756 Male: 370 Female: 386	
Outcome 1: The immediate risks to the health of affected populations are reduced		
Indicators:	Target	Actual
Number of people reached with health interventions	100,000 HH / 500,000 ppl	756
Output 1.1: The health situation and immediate risks are assessed using agreed guidelines		
Indicators:	Target	Actual
Number of counties that have conducted health assessments and risk mapping	12 counties	1 county
Number of counties that have received contingency plans and engaged in coordination meetings	12 counties	Pending income from EA
Number of response coordination meetings conducted	6	Pending income from EA
Output 5.2: Acute malnutrition cases are managed in the community, with referrals established for severe cases.		
Indicators:	Target	Actual
Number of people reached with nutrition interventions	10,000 HH / 60,000 ppl	756 ppl and still ongoing

Health Output 1.3: Community-based disease prevention and health promotion is provided to the target population		
Indicators:	Target	Actual
Number of volunteers trained communicable disease (malaria, dengue, kalazar, cholera, covid 19) coordination	160 volunteers	Pending income from EA
Health Output 1.3: Community-based disease prevention and health promotion is provided to the target population		
Indicators:	Target	Actual
Number of community mental health and psychosocial support sessions conducted	30 sessions	Pending income from EA
Health Output 1.5: Acute Malnutrition is addressed in the target population		
Indicators:	Target	Actual
Number of health outreach sessions conducted	72 sessions	4 sessions
Number of CHVs sensitised on using family MUAC	30 per county	Pending income from EA
Number of caregivers trained and sensitised on using family MUAC	30 per county	Pending income from EA
Number of GOK staff sensitised on integrated management of acute malnutrition	3 staff	Pending income from EA
Number of county team staff that has been sensitized in maternal, infant, and young child nutrition in emergencies	90 staff	Pending income from EA
Number of malnutrition cases referred to health facilities	180 cases	Pending income from EA
Health Output 1.6: Minimum initial maternal and neonatal health services provided to target population		
Indicators:	Target	Actual
Number of counties where health care workers have been oriented on MISP	3 counties	Pending income from EA
Progress towards outcomes		
<p>KRCS is and will be conducting health outreaches in Wajir County until the end of November to support the county government in screening and admission of children with acute malnutrition. Wajir county conducted rapid health assessments in Wajir sub-counties which include Eldas, Wajir West, Wajir East and Wajir South. The data collected was mainly through the key informant and it's currently being administered to the Sub- County coordinators, FGD group for mothers with children below 5 years. The targeting is mainly only on households that are affected by drought. Data collection is mainly on nutrition, SGBV and non-communicable diseases. One of the main issues picked during the targeting is that most of the breastfeeding mothers affected by drought are still not able to practice exclusive breastfeeding to children below 6 months as they have to leave their siblings when in search of daily meals and water for the family.</p> <p>In addition, KRCS is still conducting health sensitization to health care workers on MOH guidelines and protocols for prevention and control of county-specific epidemics to 21 Male, and 36 females making a total of 57 health care workers. The exercise is still ongoing and will be supported until 30th October 2021. However, there is need to expand these activities to other counties affected by drought. The target and key participants are public health officers, health facilities in charge and community health assistants. KRCS since the start of the DREF has conducted sensitization of 33 County teams members on maternal infant and Young Child Nutrition in Emergencies in two sub-counties of Wajir South.</p> <p>The health facilities from the month of August have been mapping out high risk areas in terms of disease outbreak and continuous monitoring and surveillance have been activated. In continued partnership, KRCS with other stakeholders, which include the local administration, health facilities in-charge, religious leaders, community health assistants and police officers will also be conducting a continuous sensitization on SGBV. This health assessment and risk mapping is expected to be upscaled to the remaining counties as KRCS keeps receiving more funding for the partners supporting this drought operation.</p>		



Water, sanitation and hygiene

People reached: 60,000

Male: 29,400

Female: 30,600

Outcome 1: Immediate reduction in risk of waterborne and water related diseases in targeted communities

Indicators:	Target	Actual
Number of people reached with WASH services	100,000 HH / 500,000 ppl	12,000 HH / 60,000 ppl

Output 1.1: Hygiene promotion activities that meet SPHERE standards in terms of the identification and use of hygiene items provided to the target population

Indicators:	Target	Actual
Number of trainer of trainees trained in Hygiene promotion in Emergencies methods	20 trainers	Pending funding from EA
Number of CHVs trained in hygiene and sanitation promotion	30 per county	Pending funding from EA

Output 1.2: Hygiene related goods (NFIs) which meet SPHERE standards are provided to the target population

Indicators:	Target	Actual
Percentage of households who have received Point of Use water treatment chemicals	100%	1%
Number of community trainings conducted on Point of Use water treatment chemicals	56	Pending funding from EA
Number of women and girls who have received sanitary materials	7,200	Pending funding from EA

Outcome 2: Improved access to safe water by communities

Indicators:	Target	Actual
Number of people accessing safe water	100,000 HH / 500,000 ppl	25,000 HHs

Output 2.1: Community managed water sources giving access to safe water is provided to target population

Indicators:	Target	Actual
Number of assessments and appraisals of water systems	20	5
Number of key water supply schemes rehabilitated	56	Pending funding from EA

Progress towards outcomes

KRCS carried out drought assessments in 5 counties, namely Kilifi, Mandera, Turkana, Samburu and Makueni. The assessment established the need to rehabilitate and appraise water points to be 23. Currently there are 4 complete rehabilitated water points in Garissa and Wajir. There are three boreholes still being rehabilitated in the two counties. The assessment has been able to establish gaps in the water points where need to be cleaned and flushed, solar pump equipping testing and solarization. Additional rehabilitation of the boreholes and shallow wells will be distributed in the counties of Wajir, Garissa, Kilifi and Taita Taveta.

A total of 1,116 households in Wajir were given water treatment chemicals. There are ongoing activities around community sensitization on hygiene and sanitation. The rehabilitated water points in Garissa and Wajir is also able to reach and assist livelihood of about 25,000 people in the two counties. Through Hygiene promotion KRCS has been able to sensitize a population of 28,000 people. Across the country through in-kind food distribution KRCS is also ensuring that the food distribution is also supported by hygiene creation, provision of water and distribution of water treatment chemicals. Through this KRCS has so far reached 12,000HHs (60,000 people) across the country.



Team conducting a visit and assessment to one of the dried water pans in Kilifi



Team conducting a visit and assessment in Garissa County

Cash transfer beneficiaries



Abdi's family was beneficiaries of a cash transfer from KRCS and they can now buy food for 2 months. They were among 750 families that benefitted from this support.



A mother prepares a meal for her family, after receiving financial support from KRCS

KRCS supported the rehabilitation of borehole water systems in Garissa County in September



Additional tanks for water storage have been installed after rehabilitation of water system in Dertu location, Dadaab Sub County.



Halima says that she is glad there is no congestion at the water. 'My home is far and I would come for water and wait for a long time, but now I return home on time'.



Protection, Gender and Inclusion

People reached: 15,000

Male: 7,350

Female: 7,650

Outcome 1: Communities identify the needs of the most vulnerable and particularly disadvantaged and marginalized groups, as a result of inequality, discrimination and other non-respect of their human rights and address their distinct needs

Indicators:	Target	Actual
Number of people supported through PGI	100,000 HH / 500,000 ppl	15,000 ¹

Output 1.1: Programmes improve equitable access to basic services, considering different needs based on gender and other diversity factors

Indicators:	Target	Actual
# of trainers trained on PGI and PSEA	10	Pending funding from EA

Output 1.2: Programmes and operations prevent and respond to sexual- and gender-based violence and other forms of violence especially against children.

Indicators:	Target	Actual
Number of people reached with communication on non-violence and peace, including SGBV and child protection	100,000 HH / 500,000 ppl	Pending funding from EA
Number of volunteers, staff and contractors who sign, are screened for, and are briefed on child protection policy/guidelines	396	396

Progress towards outcomes

KRCS personnel, including volunteers, staff and contractors have signed the PSEA policy which is usually accompanied by the contracts of engagement. Before they sign these documents, they are briefed on child protection policy/guidelines. Further activities, such as training of trainers and communication activities are pending funding from EA.

¹ Through the multipurpose cash transfer program.

Disaster Risk Reduction		
People reached: 0 Male: 0 Female: 0		
Outcome 1: Communities in high-risk areas are prepared for and able to respond to disaster		
Indicators:	Target	Actual
Number of people reached with DRR activities	12,000 HH	Pending funding from EA
Output 1.1: Communities take active steps to strengthen their preparedness for timely and effective response to disasters.		
Indicators:	Target	Actual
Number of counties with developed and implemented community plans of action	12	2
Number of counties with Early Action and Early Warning systems	12	2
Progress towards outcomes		
Activities are pending funding from EA. The only county that has developed early action and early warning system are West Pokot and Tana River. However due to the limitation of funds they have not been able to implement the system.		

ENABLING ACTIONS

Strengthen National Society		
Outcome S1.1: National Society capacity building and organizational development objectives are facilitated to ensure that National Societies have the necessary legal, ethical and financial foundations, systems and structures, competences and capacities to plan and perform.		
Indicators:	Target	Actual
Number of volunteers insured	360	360
Output S1.1.4: National Societies have effective and motivated volunteers who are protected		
Indicators:	Target	Actual
Number of volunteers engaged in the operation	360	360
Progress towards outcomes		
360 KRCS volunteers have been engaged in the response. KRCS volunteers conducted focus group discussion targeting displaced population and host community as well as household visits to affected population to consult the affected population on their needs, as part of the needs assessment and community sensitization on KRCS complaints and feedback mechanism has been done. Feedback mechanisms include feedback desk in temporary camps as well as the KRCS tollfree hotline. A CEA refresher training is being planned for volunteers.		

Influencing others as strategic partners		
Output: NS compliance with Principles and Rules for Humanitarian Assistance is improved		
Indicators	Target	Actual
# of workshops conducted for governance and management	2	Pending funding from EA
Output: Coordinating role of the IFRC within the international humanitarian system is enhanced		
Indicators	Target	Actual
Work in coordination with movement partners and organizations	3 partners engaged	3 partners engaged
Output: In the context of large-scale emergencies the IFRC, ICRC and NS enhance their operational reach and effectiveness through new means of coordination		
Indicators	Target	Actual

SMCC and movement coordination (monthly)	18 months	Pending funding from EA
Output: IFRC and NS are visible, trusted and effective advocates on humanitarian issues		
Indicators	Target	Actual
Information on the EA published	3	Pending funding from EA
Progress towards Outcome		
<p>During all the major activities in the field like in-kind food distribution and cash transfer, KRCS has been conducting documentation both internally and externally through the local media using Royal Media and Nation Media group. The beneficiary who received cash will be sharing their story to the KRCS and IFRC public relations in every intervention done. KRCS will be doing more of write ups and human interesting stories while the media houses will be doing more of external video publications.</p> <p>KRCS has collaborated and coordinated with the Canadian Red Cross and IFRC in undertaking a Food Insecurity and Livelihoods assessment, and further engaged and coordinated with the British Red Cross on support for Food Security and Cash interventions, and the ICRC on support for Cash, WASH and Health interventions related to the drought and hunger crisis</p> <p>Tweets shared in the last week. https://twitter.com/MukhieOmer/status/1455177217072406540 https://twitter.com/IFRCAfrica/status/1457617441769537538 https://twitter.com/IFRCAfrica/status/1456220691141996545 https://twitter.com/IFRCAfrica/status/1454013352997531649 https://twitter.com/KenyaRedCross/status/1453724819397046273 https://twitter.com/KenyaRedCross/status/1453725114491564041</p>		

D. Financial Report

Please find attached the latest Financial Report. Of the total Emergency Appeal budget figure of CHF 8,000,000, to date, CHF 615,176 has been received, coverage of 7.69%. **Further funding contributions are very urgently needed.**

Reference documents



Click here for:

- [Emergency Plan of Action \(EPoA\)](#)
- [Emergency Appeal](#)

For further information, specifically related to this operation please contact:**In Kenya Red Cross Society**

- **Secretary General** Dr. Asha Mohammed. Mobile: +254 701812658. E-mail: mohammed.asha@redcross.or.ke
- **Head of Disaster Management:** Elijah Muli. Mobile: +254 721418841. E-mail: elijah.muli@redcross.or.ke

IFRC Country Cluster Delegation

- **Head of IFRC Country Cluster Delegation for Kenya and Somalia:** Mohamed Babikar. Mobile: +254 110843974. Email: mohamed.babiker@ifrc.org

In the IFRC

- **Head of DCPRR:** Adesh Tripathee. Mobile: +254 731067489. Email: adesh.tripathee@ifrc.org

For IFRC Resource Mobilization and Pledges support:

- **Head of Partnerships and Resource Development Regional Office for Africa:** Louise Daintrey-Hall. Mobile: +254 110843978. Email: louise.daintrey@ifrc.org

For In-Kind donations and Mobilization table support:

- **Head of Africa Regional Logistics Unit:** Rishi Ramrakha. Mobile: +254 733888022. Email: rishi.ramrakha@ifrc.org

For Performance and Accountability support:

- **PMER Manager:** Philip Kahuho. Mobile: +254 732232081. Email: philip.kahuho@ifrc.org

How we work

All IFRC assistance seeks to adhere to the **Code of Conduct** for the International Red Cross and Red Crescent Movement and Non-Governmental Organizations (NGO's) in Disaster Relief and the **Humanitarian Charter and Minimum Standards in Humanitarian Response (Sphere)** in delivering assistance to the most vulnerable. The IFRC's vision is to inspire, **encourage, facilitate and promote at all times all forms of humanitarian activities** by National Societies, with a view to **preventing and alleviating human suffering**, and thereby contributing to the maintenance and promotion of human dignity and peace in the world.

The IFRC's work is guided by Strategy 2020 which puts forward three strategic aims:



Save lives,
protect livelihoods,
and strengthen recovery
from disaster and crises.



Enable **healthy**
and **safe** living.



Promote **social inclusion**
and a culture of
non-violence and **peace**.

Emergency Appeal

INTERIM FINANCIAL REPORT

Selected Parameters			
Reporting Timeframe	2021/8-2021/10	Operation	MDRKE049
Budget Timeframe	2021/8-2023/3	Budget	APPROVED

Prepared on 17 Nov 2021

All figures are in Swiss Francs (CHF)

MDRKE049 - Kenya - Drought Hunger Crisis 2021

Operating Timeframe: 12 Aug 2021 to 09 Mar 2023; appeal launch date: 09 Sep 2021

I. Emergency Appeal Funding Requirements

Thematic Area Code	Requirements CHF
AOF1 - Disaster risk reduction	208,000
AOF2 - Shelter	0
AOF3 - Livelihoods and basic needs	4,500,000
AOF4 - Health	754,000
AOF5 - Water, sanitation and hygiene	878,000
AOF6 - Protection, Gender & Inclusion	126,000
AOF7 - Migration	0
SFI1 - Strengthen National Societies	726,000
SFI2 - Effective international disaster management	0
SFI3 - Influence others as leading strategic partners	158,000
SFI4 - Ensure a strong IFRC	650,000
Total Funding Requirements	8,000,000
Donor Response* as per 17 Nov 2021	615,176
Appeal Coverage	7.69%

II. IFRC Operating Budget Implementation

Thematic Area Code	Budget	Expenditure	Variance
AOF1 - Disaster risk reduction	277,350	11	277,339
AOF2 - Shelter	0	0	0
AOF3 - Livelihoods and basic needs	0	368,636	-368,636
AOF4 - Health	32,462	0	32,462
AOF5 - Water, sanitation and hygiene	44,837	0	44,837
AOF6 - Protection, Gender & Inclusion	0	0	0
AOF7 - Migration	0	0	0
SFI1 - Strengthen National Societies	11,837	0	11,837
SFI2 - Effective international disaster management	0	0	0
SFI3 - Influence others as leading strategic partners	0	0	0
SFI4 - Ensure a strong IFRC	2,870	198	2,672
Grand Total	369,354	368,844	510

III. Operating Movement & Closing Balance per 2021/10

Opening Balance	0
Income (includes outstanding DREF Loan per IV.)	984,530
Expenditure	-368,844
Closing Balance	615,686
Deferred Income	0
Funds Available	615,686

IV. DREF Loan

* not included in Donor Response	Loan :	369,354	Reimbursed :	0	Outstanding :	369,354
----------------------------------	--------	---------	--------------	---	----------------------	----------------

Emergency Appeal

INTERIM FINANCIAL REPORT

Selected Parameters			
Reporting Timeframe	2021/8-2021/10	Operation	MDRKE049
Budget Timeframe	2021/8-2023/3	Budget	APPROVED

Prepared on 17 Nov 2021

All figures are in Swiss Francs (CHF)

MDRKE049 - Kenya - Drought Hunger Crisis 2021

Operating Timeframe: 12 Aug 2021 to 09 Mar 2023; appeal launch date: 09 Sep 2021

V. Contributions by Donor and Other Income

Opening Balance							0
Income Type	Cash	InKind Goods	InKind Personnel	Other Income	TOTAL	Deferred Income	
DREF Allocations				369,354	369,354		
Finnish Red Cross	107,336				107,336		
Japanese Red Cross Society	40,057				40,057		
The Canadian Red Cross Society (from Canadian Gov	183,308				183,308		
The Netherlands Red Cross (from Netherlands Govern	284,475				284,475		
Total Contributions and Other Income	615,176	0	0	369,354	984,530	0	
Total Income and Deferred Income					984,530	0	