


Emergency Plan of Action (EPoA)

Indonesia: Semeru Volcano Eruption



DREF Operation	MDRID023	Glide n°:	VO-2021-000194-IDN
Date of issue:	17 December 2021	Expected timeframe:	6 months
		Expected end date:	30 June 2022
Category allocated to the of the disaster or crisis: Yellow			
DREF allocated: CHF 325,368			
Total number of people affected:	10,965 people	Number of people to be assisted:	10,965 people
Provinces affected:	East Java	Provinces/Regions targeted:	Lumajang District
Host National Society(ies) presence: The Indonesian Red Cross Society (Palang Merah Indonesia – PMI) is Indonesia's largest humanitarian organization. PMI works through 34 provincial chapters and 474 district branches covering all major cities and administrative districts in the country. PMI has approximately 1.5 million volunteers and supporters nationwide.			
Red Cross Red Crescent Movement partners actively involved in the operation: PMI will lead the overall response operation. This action is supported by the International Federation of Red Cross and Red Crescent Societies (IFRC).			
Other partner organizations actively involved in the operation: At the national level, government response is coordinated by the National Board for Disaster Management (<i>Badan Nasional Penanggulangan Bencana – BNPB</i>). On the field, the response is led by the Regional Disaster Management Agency (<i>Badan Penanggulangan Bencana Daerah – BPBD</i>) of East Java Province, Lumajang District and Malang District. Other government agencies involved include the National Search and Rescue Agency (<i>Badan SAR Nasional – BASARNAS</i>), the National Armed Forces (<i>Tentara Nasional Indonesia – TNI</i>), Regional Office of Social Affairs (<i>Dinas Sosial – DINSOS</i>), and the National Police (<i>Kepolisian Republik Indonesia – POLRI</i>). Besides government agencies, there are 448 non-government and community-based organization present on the field.			

A. Situation analysis

Description of the disaster

Lumajang District, East Java Province

On Saturday, 4 December 2021, at 14.50 Western Indonesia Time (*Waktu Indonesia Barat – WIB (GMT+7)*), Mount Semeru Observation Post at Gunung Sawur Post reported flood lava vibrations or hot cloud avalanches of Mount Semeru, located on the border of Lumajang and Malang districts in East Java Province. The avalanches recorded with maximum amplitude of 20 millimetres – 25 millimetres Seismographs for 5160 seconds. Hot and volcanic ashes blown towards Southwest from the crater. Mount Semeru was at alert level 2 (advisory, **waspada**) prior to the lava vibrations and still remains at level 2. As of 9 December 2021, Centre of Volcanic and Geology Disaster Mitigation or *Pusat Vulkanologi dan Mitigasi Bencana Geologi (PVMBG)*, reported 9 eruptions following the main eruption on Saturday with maximum amplitude ranging from 22-37 mm, occurring between 200-240 seconds.

Centre of Vulcanology and Geology Disaster Mitigation (*Pusat Vulkanologi dan Mitigasi Bencana Geologi* or PVMBG) instructed the communities to stay clear of a 5-kilometre radius around Mount Semeru and to stay vigilant for cold-lava flows especially around the river-basin flowing from Mount Semeru. Based on observations, hot avalanches have stopped due to rain around the peak of Mount Semeru's lava dome. PVMBG has warned the public of the dangers of exposure to volcanic materials, such as eye injuries, suffocation, and respiratory problems. As of 9 December 2021, 3 districts in East Java Province namely Lumajang district, Malang district and Blitar district have been affected by the hot ash and lava avalanches. Causing injuries to 144 people (32 severely injured and 82 mildly injured, 9 people missing, 43 fatalities and displacing 6,586 people to 125 evacuation location). Most of the evacuation centres are established in open spaces while some of the offices of public authorities and community centres are also used as evacuation centres. All the evacuation centres are managed by BPBD. The National Water Company is assigned to provide potable water. Ministry of Public Work and Housing set up emergency latrines, Ministry of health with the support from local community health centre is providing health services and referral services and Field kitchen made available by Ministry of Social Affairs at each of the evacuation centre. Various non-governmental organizations, and community-based organizations¹ also providing services and in-kind donations at the evacuation centres. The table below provides further details regarding the evacuation centres.

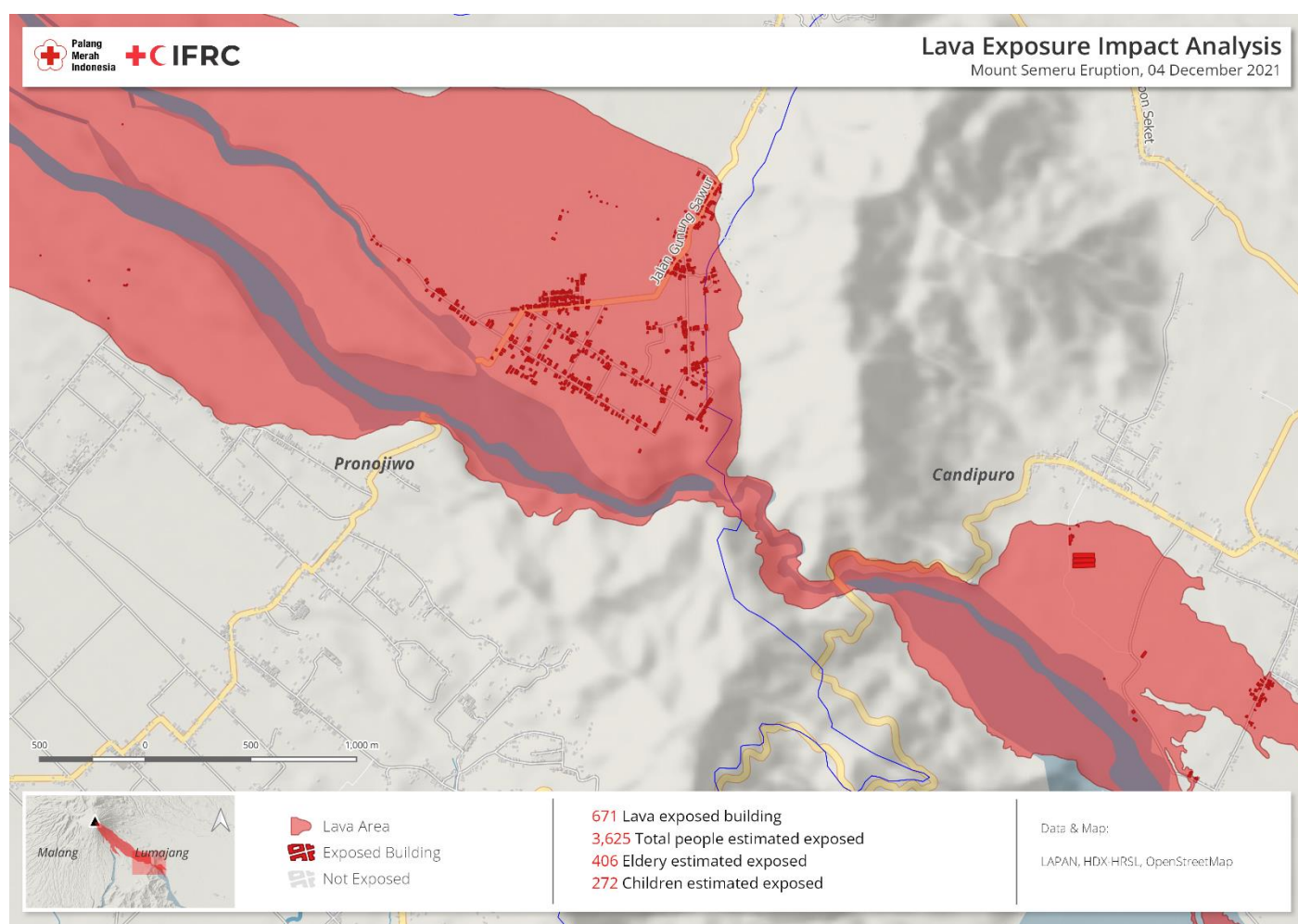
District	# of evacuation centre	Number of Evacuees
Lumajang District	125	6,542
Pronojiwo sub-district	10	525
Candipuro sub-district	10	2,331
Pasirian sub-village	4	1,307
Lumajang sub-district	11	335
Tempeh sub-district	12	640
Sukodono sub-district	9	204
Sumbersuko	9	302
Yosowilangun	8	89
Jatiroto	3	59
Rowokangkung	4	37
Ranuyoso	1	26
Gucialit	3	11
Pasrujamber	2	212
Kunir	8	127
Tekung	3	67
Senduro	4	66
Padang	3	62
Kadungjajag	7	50
Klakah	5	45
Randuagung	7	24
Tempusari	2	23
Malang District	1	24
Jabung sub-district	1	24
Blitar District	1	20
Kanigoro sub-district	1	20
TOTAL	127	6,586

BNPB recorded 2,970-unit houses, 31 public facilities, 42 schools, 1 health facilities, 12 praying houses and 1 bridge damaged by the hot ashes and avalanches. Communities also lost their livestock such as cow, goat and chickens and

¹ <https://docs.google.com/spreadsheets/d/1AGFa0V59hSd0SeFqs8Ov-9-ofLHLPv/edit#gid=1830322517>

agricultural stock such as rice, corn and vegetables. Heavy rainfall hampered the evacuation, search, and rescue efforts for the first 2 days after the eruption. There was 1 mining location with 8 people isolated due to the mud and debris cut-off road access to the area. However, all isolated people were rescued on 7 December 2021, and all reported safe and well.

Responding to the situation, Lumajang District government has declared a disaster emergency alert (*Tanggap Darurat Bencana*) within its administrative area for 1-month starting from 4 December 2021 to 3 January 2022 based on Decree Number 188.45/525/427.12/2021. The Government of Indonesia through provincial ministries, police and military services have responded to the situation have dispatched logistical support and aid to East Java. Various individual donors, non-government and community-based organizations are providing services at the evacuation zone. Immediate and logistical needs are covered and sufficient through the 1-month emergency phase. BNPB has instructed all humanitarian actors and stakeholders to start planning for the post-emergency phase and preparedness for another eruption. Thus far, there are no active COVID-19 cases in Lumajang, Malang and Blitar districts. However, COVID-19 still poses a risk considering there are 30 active cases and 2 fatalities across East Java province as of 9 December 2021.



Mount Semeru Lava Flow and the affected communities in Pronojiwo Sub-district. (Photo: IFRC)

Summary of the current response

Overview of Host National Society Response Action

PMI NHQ has dispatched logistical support in the form of:

- 300 hygiene kits (consist of bath soap, washing soap, shampoo, tooth paste and tooth brush, tampons, towel and a container box) , 300 family kits (consist of bath soap, washing soap, shampoo, toothpaste and tooth brush, towel, dish soap, water dipper, plastic plate and cup, stainless eating utensil, candles, table mop, flip flop, sarong, garbage bag and a container), 20,000 cloth face mask, 50,000 surgical mask, 9,600 face masks for children, 200 face shield, 100 mattresses, 300 blanket, 300 tarpaulins, 6 emergency tents, 350 clothes, 10 portable latrines, 11 water trucks and 2 Haggglunds to support search and rescue efforts.
- Emergency response operational funds in the amount of IDR 100,000,000 and procuring 100 unit of water tank locally.
- Mobilized 1 staff to support assessment, coordination (internal and external) and planning between affected branches.



PMI Malang district evacuating and providing health service to vulnerable group. (Photo: PMI Malang District)

PMI Lumajang, Malang and Blitar district response teams have been on the ground since the day of the eruption to conduct assessment, support evacuation efforts and deploying field kitchen. As of Friday, 10 December 2021, PMI mobilized 191 personnel (among which 165 volunteers and 26 staff) along with 32 operational equipment, 1 pickup truck, 4 logistical truck, 10 water trucks, 5 field kitchens, 4 ambulances, 1 emergency warehouse and 1 command post to respond to the situation and provide services to the affected communities such as:

- Needs and impact assessment
- Household and food items distribution
- First-aid and basic health services
- Provision of water (water trucking activity) and distribution of 39,200 litre of water
- Distribution of water containers
- Distribution of hygiene kits
- Hygiene promotion
- Provision of meal package (Field kitchen)
- Construction of Emergency shelter

Overview of Red Cross Red Crescent Movement Actions in country

IFRC Country Cluster Delegation (CCD) for Indonesia and Timor-Leste consists of a head of CCD and technical capacities in disaster management, shelter, health, water, sanitation, and hygiene (WASH), national society development, communication, community engagement and accountability (CEA), support services in finance, human resources, and administration. The partnering national societies present in country include American Red Cross, Japanese Red Cross Society, Turkish Red Crescent, and Qatari Red Crescent. The International Committee of the Red Cross (ICRC) is also present in the country to offer its services if required.

IFRC team is monitoring the current situation with the disaster and other public health risks, including to the transmission rates of COVID-19 in the affected area. Further, the health team is monitoring national epidemiological data, health indicators, disaster and disease patterns for analysis and early detection of public health concerns, disease outbreaks or epidemics, in order to facilitate the identification of necessary readiness and response actions to be taken through the Emergency Plan of Action (EPoA).

Overview of other actors' actions in country

At national level, BNPB oversees and coordinates government's response to the eruption. A press conference was held and led by the Head of BNPB on the situational update and the response plan. In summary, the Government of Indonesia will provide immediate relief and support to the affected families such as:

- Dispatching relief and aid items to Lumajang, Malang and Blitar district
- For heavily damaged and completely destroyed houses, the government will provide *Dana Tunggu Hunian* or Housing Compensation funds for IDR 600,000 (approximately CHF 40) per household per month for 6 months
- The Government is planning to relocate 2000 household who used to live in disaster prone area (red zone) to a new location.

As instructed by the President of The Republic of Indonesia, the head of BPNB visited Lumajang on 6 December 2021 whereas the President visited the affected area later on 7 December 2021 along with the Governor of East Java province, Lumajang Head of Regent. Representatives from the Ministry of Social Affairs also visited the affected area on 6 December 2021. Following the visit, BNPB delivered 1,347 food and side dishes package, 2,000 blankets, 900 mattresses, 20,000 Facemasks (type KF 94) and 2 emergency tents². At the field level response is being coordinated by the regional disaster management agency (*Badan Penanggulangan Bencana Daerah – BPBD*) of East Java Province and Lumajang, Malang and Blitar District. Each of the affected BPBD Districts oversees evacuation efforts and distribution of relief items as well as liaising with other stakeholders.

Besides Government agency and organizations, there are 448 organizations with approximately 2,452 personnel identified in the field³. Services provided such as:

- Search and Rescue
- Health in Emergency
- Camp management
- Provision of food and donations including water
- Logistics
- Construction of emergency shelter and distribution of shelter material
- Education and Child Protection

Needs analysis, targeting, scenario planning and risk assessment

Needs analysis

The initial needs assessment from PMI and BPBD have determined that the primary needs are emergency relief supplies such as emergency shelter food and water, family kits, hygiene kits, clean water, baby kits, face masks, blankets, tarpaulins, and mattresses. Access to the affected area has been covered by ash, mud, and debris. Search and rescue team are struggling to reach several areas in Lumajang district. Heavy rain has also turned all the volcanic ash to mud and is increasing the risk of landslide and collapse of bridge or houses. In total, 6,586 people have been displaced in 125 evacuation centres in 3 affected districts. Some of the evacuated households may return to their houses after post-eruption debris cleaning is concluded. However, as the government is planning to reallocate 2000 households (approx. 10,965) to a new safer location, some of these households might occupy the evacuation centre or have to stay at rented accommodation for an extended period of time. Currently, the government are still do the assessment and coordinating with the ministry of public works and housing to determine which household that will be reallocated to new location.

Along with the relocation plan the government will provide *Housing Compensation funds* in the amount of IDR 600,000 or approximately CHF 40 for the next 6-months to the displaced households as support while they are waiting for the government to support construction of new permanent houses. Aside from the compensation funds, there is as of yet no clear strategy to support displaced households with transitional shelter solutions.

Besides losing their houses and belongings, livelihoods have been impacted as most of the community in Lumajang, Malang and Blitar rely on agriculture and livestock product, which have been adversely affected by volcanic ash and lava avalanches. Based on initial assessment and coordination between organizations, markets are still functioning in Lumajang, Malang and Blitar area. Even though smaller market located near the crated are destroyed and not functioned as the government ban any activities in the red zone. However, goods and supply are available at neighbouring markets. Further market assessment is still ongoing to determine detailed needs, availability, market capacity and MEB in Lumajang districts. At the moment the Cash National Cash Working Group has developed National Minimum

² BNPB official twitter page: https://twitter.com/BNPB_Indonesia/status/1467326609233354754. Last accessed: 10 December 2021.

³ BNPB desk Relawan: <https://deskrelawanpb.bnppb.go.id/semeru/>. Last accessed: 10 December 2021.

Expenditure Basket for Indonesia. Even though the documents are not final yet, the document can be used as references whilst waiting for robust assessment result

Post-eruption debris cleaning is essential in order to regain road access into the affected area. Based on initial assessments, sections of the water pipeline in Lumajang district have been destroyed or damaged due to the debris and hot ashes. Besides the water pipeline, household well and water tanks are covered and contaminated by volcanic ashes. Even though, water can be transported from the neighbouring districts, rehabilitating water system in Lumajang district might need a substantial amount of time and effort.

At the evacuation centre, BPBD also stresses that existing evacuation centres are not adhering to health guidelines and recommendations. Especially during the COVID-19 pandemic, maintaining health and hygiene are essential in curbing the spread of the disease. Thus, there is a need to provide technical guidance on COVID-19 for personnel and volunteers on the field and community sensitization and awareness for the evacuees and villagers nearby.

Targeting

PMI will continue distributing household items such as hygiene kits, family kits, facemasks, tarpaulins, sleeping mats and blankets. Along with the household items, PMI has set up and will continue to operate 100 water tendons in 3 affected areas. PMI will continue providing Psychosocial Support and conducting health awareness and hygiene awareness sessions at the evacuation centre and to the community in neighbouring villages (Approximately 10,965 people). Hence, with implementing community-based soft activities such as PSS, hygiene and sanitation promotion, protection, gender, and inclusion activities, and health awareness rising initiatives, PMI will reach to a total of 10,965 people in three target districts. This is while out of this total target (10,965), PMI will assess and identify 500 most vulnerable households to provide them with multipurpose cash grant assistance.

PMI will reach up to 500 household or 2,500 individuals in the most affected villages in Lumajang, Blitar, and Mulang districts, which include all affected 21 sub-districts. This will complement the Shelter Compensation fund in the amount of IDR 600,000 or approximately CHF 40 to cover. As the compensation fund can be used to cover temporary sheltering cost such as rents and etc, PMI would complement the support by providing multipurpose cash in the amount of IDR 1,335,000 or CHF 89 per month for 3 months for multipurpose needs. On the other hand, PMI will support the community to rehabilitate damaged water pipeline in the area. To complement the water pipeline, Hygiene promotion will be conducted to the community. PMI is prioritizing:

- Families who have been assessed as having severely damaged houses/displaced?
- Families with pregnant or lactating women
- Female-headed households
- Elderly people who live by themselves
- Families caring for a person with a disability

Estimated disaggregated data for population targeted

Sub-district, District, Province	Total population	Female	Male
Lumajang District, East Java	2,500	1,225	1,275

Scenario planning

Scenario	Humanitarian consequence	Potential Response
COVID-19 outbreak in the affected areas	<ul style="list-style-type: none"> • Inability to implement activities due to staff and volunteers contracting COVID-19 • Challenges with activity implementation because of social restrictions are prohibiting mass-gathering and mobilization 	<ul style="list-style-type: none"> • Activities such as health promotion and sensitization • Ensure coordination with government agencies and affected communities. • Ensure PMI staff are trained in COVID-19 safe protocols
Extreme weather (such as heavy rain)	<ul style="list-style-type: none"> • IDPs are at risk of further disasters such as floods and vector-borne diseases such 	<ul style="list-style-type: none"> • As an auxiliary role to the government, PMI could provide suggestions with supporting

	as dengue as the peak of rainy season is predicted to occur in December.	information or data to government whilst monitoring the situation in the affected areas
Further intensification of volcanic activities	<ul style="list-style-type: none"> • Longer-term displacement • Significant increase in the number of IDPs 	<ul style="list-style-type: none"> • Scale-up the operation under a revised DREF or Emergency Appeal, including an increase in funding and timeframe

Operation Risk Assessment

A few operational risks are identified in the scenario planning section that may occur and hamper the operation include the following:

- Currently, BPBD is coordinating the response between local government departments including the implementation and dissemination of humanitarian standards. However, the amount of humanitarian actors in the field is large, with over 100 different agencies. Overlapping activities may cause friction between affected communities especially related to cash-based interventions. PMI will ensure specific assessments are conducted prior to providing CVA assistance and both PMI and IFRC will continue to coordinate closely with humanitarian partners at the national and local levels.
- There is a risk to the safety of personnel due to toxic conditions and potentially violent eruption of the volcano. Advisory information will also be circulated in terms of precautionary measures to be taken to protect health, and early warning early action systems identified for safe evacuation (in accordance with the authorities own contingency plans).
- The probability of PMI personnel and volunteers contracting COVID-19 in the field. If this happens, the implementation of the operation can be disrupted. PMI will ensure volunteers are briefed on COVID-19 safe protocols and will provide insurance for volunteers.
- As the procurement process is needed for the cash intervention and distribution, certain amount of time should be allocated to accommodate the process prior to the cash distribution. This may cause delays in the implementation.

B. Operational strategy

Overall Operational objective:

The operation aims to meet the immediate needs of 500 households or 2,500 people affected by Semeru Volcano eruption that will have to be relocated according to the Government plan. The government will provide IDR 600,000 or CHF 40 per household for the next 6-months whilst in parallel, the government construct the permanent shelter. PMI will provide multipurpose cash grant to 500 household in the amount of IDR 1,335,000 or CHF 89 per household for the next 3-months. However, as the market assessment and needs assessment are still ongoing, the objectives of the cash intervention may subject to the situation on the field and the government plans.

In addition, the operation will support the water pipeline rehabilitation process at Lumajang district benefiting 3,000 households. PMI will provide services to displaced people in evacuation centres as well as those displaced with extended family, for a period of 3 months. This will be accomplished through the following activities:

- Mobilization of personnel and assets to support evacuation efforts and conduct needs assessments.
- Distribution of Multipurpose Cash Grant Assistance to 500 households.
- Rehabilitation of water pipeline that will benefit up to 3,000 households.
- Replenishment for mobilized and distributed household items
- Dissemination of key health and hygiene promotion messages (including information on COVID-19 prevention) to affected families along with PSS activities at the evacuation centre

Operational Support Services

Human Resources

PMI Province will lead the operation in the field, while PMI NHQ will oversee the management of the operation and support the financial management. Technical oversight will be provided by PMI NHQ with the support from IFRC CCD's DRM unit, while the CEA/PGI focal point will assist with the integration of protection, gender and inclusion and community engagement and accountability into the operation. PMI has a well-established community feedback mechanism which will be adjusted to support this operation with the support of IFRC's CEA specialist. The feedback collection will be established through two-way communication channels which community affected's preference, such as radio, hotline, help desk, social media. PMI NHQ and IFRC will also provide support on coordination with health-related stakeholders. The direct visit of IFRC staff to the operation will be decided depending on the improvement of COVID19 situation in the country. IFRC DRM specialist will support the overall management, reporting and financial control of the operation.

Logistics and Supply Chain

Logistics activities aim to effectively manage the supply chain, including, procurement, fleet, storage, and transport to distribution sites in accordance with the operation's requirements and aligned to IFRC's logistics standards, processes, and procedures. PMI Branch will work directly with PMI Province and PMI NHQ for the transport of goods to the location where local procurement is not available. Cash distribution will involve third-party financial service providers to ensure accountability and minimise programmatic risk. The DREF support will also covered replenishment for mobilized household items and logistics from PMI Gresik Regional Warehouses. IFRC CCD will lead the procurement and replenishment process. This operation will ensure that all activities will follow IFRC procurement policy and regulation.

Communications

Communication will focus on engagement of communities. Key messages and relevant documentation for media will be updated on a need basis, including updates regarding the humanitarian activity on the field, reallocation updates, programmatic updates especially on the Cash intervention and COVID-19 situation for local populations through social media, radio etc, in close collaboration with the PMI CEA and Communication team and supported by the IFRC.

Security

The National Society's security framework will apply throughout the duration of the operation to their staff and volunteers. The National Society will brief its personnel working in the field on the evolving situation and the relevant evacuation routes and processes to ensure they operate safely. IFRC international staff will monitor progress both remotely and, in the field, dependent upon the evolving situation with COVID-19. For personnel under IFRC security's responsibility, including surge support deployed to the area, the existing IFRC country security plan, including security regulations, contingency plans for medical emergencies, relocation and critical incident management will be applicable. All IFRC must, and RC/RC staff and volunteers are encouraged, to complete the IFRC Stay Safe e-learning courses, i.e. Stay Safe Personal Security, Stay Safe Security Management and Stay Safe Volunteer Security online training. The IFRC CCD Jakarta security focal point will work closely with the PMI NHQ and provincial branch to provide advice as required.

Planning, Monitoring, Evaluation, and Reporting (PMER)

The Plan of Action will be guided and monitored by PMI East Java Province with support from PMI NHQ and the IFRC Operation Manager in Jakarta. The current update on the event has been posted on GO Platform which can be found via this [link](#).

Reporting on the emergency plan of action will be carried out according to IFRC standards. Due to COVID-19, monitoring visits to the affected communities will be done by PMI branches in the vicinity of the volcanoes aligned with the social and physical distancing measures for COVID-19. In addition, monitoring can also be done through phone interviews and or offline/online questionnaire with beneficiaries, volunteers, and others participating in the response to assess progress at regular intervals. In addition to that, an evaluation will be carried out by the end of the operation that will emphasize on the cash intervention and distribution.

Administration and Finance

The IFRC will provide the necessary operational support for review, validation of budgets, bank transfers, and technical assistance to the National Society on procedures for justification of expenditures, including the review and validation of invoices. The IFRC finance focal point in Jakarta will provide oversight.

C. Detailed Operational Plan



Shelter

People targeted: 2,500 people

Male: 1,275

Female: 1,225

Requirements (CHF): 19,250

Needs analysis: As soon as the first eruption happened on Saturday (04/12) people started evacuating from their villages to several evacuation centres. As per 9 December 2021, there are 6,586 people evacuated from their villages to 125 identified evacuation centres. To accommodate the affected communities, several government office, schools, and public halls were prepared by the local government as temporary evacuation centres. All evacuation centres are managed by BPBD with various non-governmental organization or community-based organizations providing services at the evacuation centre such as relief and household items distribution, clothing material, food, and meal package and etc. Considering the amount relief items and active humanitarian actor on the field, immediate needs at the evacuation centres are well covered.

The Government of Indonesia plans to relocate 2,000 households from Lumajang district to a new and safer location. To facilitate this, the Government of Indonesia has announced support through the provision of *Dana Tunggu Hunian* or the Housing Compensation Fund Shelter for households who need to be relocated from the red zone. At the current time it is not clear how long it will take for the housing compensation fund to be implemented. The Government has a short-medium term plan to provide some financial support in the form of monthly cash disbursements of 600,000 IDR (40CHF) for households who are displaced by the eruption in the interim period. However, based on previous operations including the Earthquake and Tsunami operations in Palu and Lombok, there are likely to be delays to the realisation of this support. Particularly as the local government has minimal experience in delivering cash assistance. Displaced households are therefore facing uncertainty and are likely to be forced to stay at evacuation centres or with family for a longer period of time. During the interim period, households will require support to meet their immediate and transitional shelter needs.

Risk analysis: Robust assessment and coordination with other stakeholders is vital to avoid any duplication of activities in the evacuation centres and to ensure that the distribution of relief items meet those in need most. Along with the reallocation plan, The Government will provide Shelter Compensation Fund to community who lost their houses or with severely damaged house. Risk Communication and Community Engagement plays a vital role to prevent any miscommunication and to minimize friction between the affected community since not all of them falls under the category.

Population to be assisted: 500 households or 2,500 people in evacuation centres received immediate and household items such as family kits, sleeping mats, blankets, and tarpaulins.

Programme standards/benchmarks: This operation will seek to meet IFRC minimum standards for PGI in emergencies and Sphere standards

P&B Output Code	Shelter Outcome 1: Communities in disaster and crisis affected areas restore and strengthen their safety, well-being and longer-term recovery through shelter and settlement solutions																									
	Shelter Output 1.1: Shelter and settlements and basic household items assistance is provided to the affected families.											# of people reached with safe and adequate shelter and settlement assistance (target: 2,500 people)														
	Activities planned	Week	1	2	3	4	5	6	7	8	9	10	11	12	13	14	15	16	17	18	19	20	21	22	23	24
AP005	Replenishment for 300 Family kit									x	x	x	x	x												
AP005	Replenishment for 100 Mattresses									x	x	x	x	x												
AP005	Replenishment for 300 blankets									x	x	x	x	x												
AP005	Replenishment for 300 tarpaulins									x	x	x	x	x												



Livelihoods and basic needs

People targeted: 2,500

Male: 1,275

Female: 1,225

Requirements (CHF): 145,780

Needs analysis: Based on impact assessments, volcanic ash and lava flows have destroyed stock, agricultural crops, and livestock. Most households in Lumajang district are dependent upon the agricultural sector as their main source of income, as such many have lost their assets and stocks as well as their means of income to cope with the disaster due to the loss of crops. In addition, displaced and reallocated communities will face uncertainty since there is a shelter gap from the emergency shelter to the permanent shelter. As mentioned earlier, IDR 600,000 or CHF 40 will be distributed to reallocated household. However, there are no clear distribution plan or dates on when the household could get access to the support, while they are still in the evacuation centre or move into their relatives, additional expenses may occur such as transportation cost, additional household items, kitchen or eating utensils, accommodation cost and etc.

PMI is still conducting a further needs assessment to determine the needs, gaps and market capacity at Lumaajng district. According to the assessment result, the objective of the cash intervention may be altered at the national level, Minimum Expenditure Basket has been developed by the National Cash Working Group. Even though the document is not finalized yet, but it consists of pre-disaster information that can be used as initial information while the assessment is still ongoing. The National MEB consist of multi-sector needs such as Health, education, shelter, utilities, GBV prevention and communication.

Risk analysis: Support will be delivered through cash transfer modality to complement the government support to the affected households in Lumajang district. Even though local market also impacted by the eruption, market activity is well supported by the neighbouring markets. Community engagement is vital to determine the most vulnerable families to be supported and to ensure beneficiary criteria is well communicated and accepted by the broader community members.

Population to be assisted: 500 household (approx. 2,500 individuals) in Lumajang district to be reached with multipurpose cash grant assistance for three months. The transfer value per month/instalment will be IDR 1,335,000 or CHF 89 sufficient to cover 44 percent of MEB. It has been agreed that 66 percent of MEB will be covered by other service providers such as the public departments while PMI is requested to cover the gap (44 percent).

Programme standards/benchmarks: This operation will seek to meet IFRC minimum standards for livelihood activities and Sphere standards in order to bring a positive impact on immediate needs transfers need to be regular (monthly is preferred) and predictable.

P&B Output Code	Livelihoods and basic needs Outcome 1: Communities, especially in disaster and crisis affected areas, restore, and strengthen their livelihoods																								
P&B Output Code	Livelihoods and basic needs Output 1.1: Household livelihoods security is enhanced through food production, increased productivity, and post-harvest management (agriculture-based livelihoods)													# people supported with multipurpose cash grant distribution (target: 500 household)											
	Activities planned Week / Month	1	2	3	4	5	6	7	8	9	10	11	12	13	14	15	16	17	18	19	20	21	22	23	24
AP009	Needs and market assessment				x	x	x	x	x	x	x	x	x												
AP009	Beneficiary assessment								x	x	x	x	x												
AP009	Coordination with government, communities, and local stakeholder				x				x				x				x				x				
AP009	Cash literacy socialization with the community										x	x	x												
AP009	IEC Material production								x	x	x														
AP009	Distribution of Multipurpose Cash Grant													x	x	x	x	x	x						
AP009	Monitoring and observation													x	x	x	x	x	x	x	x	x	x	x	x
AP009	Evaluation of cash grant distributed																					x	x	x	x



Health

People targeted: 10,965

Male: 5,592

Female: 5,373

Requirements (CHF): 79,620

Needs analysis: Shortly after evacuation centres filled with displaced communities from the 3 affected districts, the local government with the support from local public health and various non-governmental/community-based organization provided medical services and health screening for the evacuated communities. At this stage, most basic health care services and medical logistics needs are covered sufficiently by local government agencies. Local organizations and individual donors are also donating food items and have established a field kitchen to ensure food availability in the evacuation centres. Psychosocial services are needed to support the displaced communities who are experiencing a high level of anxiety in relation to the ongoing volcanic activities. PMI managed to reach 95 people through PSS activity in the evacuation centre, most of the activity targeted children through games and playing activities. To ensure health protocols are adhered to whilst supporting the COVID-19 protocol campaign in the evacuation centres, PMI has distributed and will continue to distribute facemasks as well as conducting health promotion, emphasising the prevention of on COVID-19 in both the affected communities as well as host communities.

Risk analysis: All facilities used as evacuation centres are commonly an open field or government offices or schools. Many households must stay and share the area without any partition for privacy. In some evacuation centres, the displaced people are accommodated in a large-sized evacuation tents, provided by BNPB. However, staying in tents is not preferable for a longer period, especially with the rainy season approaching. Without sufficient air circulation and no partitions available in the evacuation centres, the displaced people are highly exposed to COVID-19 transmission.

Population to be assisted: 10,965 people (male 5,592 and female 5,373) in the evacuation centres and host-communities in Lumajang district will be assisted with health promotion, specifically related to the situation of volcano eruption in COVID-19 pandemic) and Psychosocial Support Service.

Programme standards/benchmarks: The activities will seek to meet SPHERE standards.

P&B Output Code	Health Outcome 1: The immediate risks to the health of affected populations are reduced																								
	Health Output 1.1: The health situation and immediate risks are assessed using agreed guidelines										# of people who are directly reached to lessen immediate risk to the health (target: 2,500 people)														
	# of people reached with health promotion activities (target: 2,500 people)																								
Activities planned	Week	1	2	3	4	5	6	7	8	9	10	11	12	13	14	15	16	17	18	19	20	21	22	23	24
AP022	In coordination with health authorities, undertake detailed assessments to identify health needs, number/type/location of damaged health facilities and/or medical service gaps in target communities	x	x	x	x	x	x																		

AP021	Print of information and visibility items (banners, leaflets and etc) where community needs relate to diseases prevention					x	x	x	x	x															
AP011	Health promotion focussing on COVID-19 and relate infectious diseases' prevention, especially in the context of evacuation centres, face masks distribution	x	x	x	x	x	x	x	x	x	x	x	x	x	x	x	x								
	Develop and disseminate IEC materials for acute respiratory infections, skin infections and diarrhea as part of the community-based disease prevention																								
P&B Output Code	Health Outcome 2: The immediate risks to the health of the affected populations are reduced through improved access to medical treatment																								
	Health Output 2.1: Improved access to health care and emergency health care for the targeted population and communities.												# of personnel and targeted communities who supported to reduce immediate health risk (target: 5,000 people)												
	Activities planned	Week	1	2	3	4	5	6	7	8	9	10	11	12	13	14	15	16	17	18	19	20	21	22	23
AP022	Replenishment for 20,000 pcs cloth facemask								x	x	x	x	x												
AP022	Replenishment for 50,000 pcs surgical masks								x	x	x	x	x												
AP022	Replenishment for 200 pcs face shield								x	x	x	x	x												
P&B Output Code	Health Outcome 3: The psychosocial impacts of the emergency are lessened																								
	Health Output 3.1: Psychosocial support provided to the target population as well as to RCRC volunteers and staff												# of psychosocial support sessions held (Target: 15 sessions) # of affected-people reached with PSS services (Target: 2,500 people) # of PMI staff and volunteers provided with PSS (Target: 30 staff and volunteers)												
	Activities planned	Week	1	2	3	4	5	6	7	8	9	10	11	12	13	14	15	16	17	18	19	20	21	22	23
AP023	Assessment of PSS needs and resources available in the community	x	x	x	x	x	x	x	x																
AP023	Provide PFA and PSS to people affected by the crisis/disaster		x	x	x	x	x	x	x																
AP023	Provide PSS to staff and volunteers					x	x	x	x																



Water, sanitation and hygiene

People targeted: 10,965 people

Male: 5,592

Female: 5,373

Requirements (CHF): 20,960

Needs analysis: During the initial phase of the emergency response, local authorities and various organizations have been providing assistance to fulfil water and sanitation needs at the evacuation centre. Most impacted households are expected to return to their homes except those whose houses are heavily or completely damaged or located in the restricted zone. They will remain in the evacuation site until they are able to repair their home or be relocated to the new site by the government. Prior to the disaster most of the community were dependent on the community-based water piping system connecting the water spring to the dwellings. Due to pyroclastic ash and the volcanic mud flood, the community piping systems have been damaged and destroyed. This is hampering efforts to provide safe water to the affected population.

Risk analysis: The key risks to the population are lack of access to clean water and outbreak of water-borne diseases due to poor hygiene in the evacuation centres.

Population to be assisted: Affected people in the evacuation centres and host communities will receive hygiene promotion and hygiene kits in the evacuation centres. Meanwhile, approximately 10,965 people will benefit from pipeline rehabilitation in the area.

Programme standards/benchmarks: Activities will seek to meet Sphere, IFRC WASH guidelines for hygiene promotion in emergency operations and IFRC menstrual hygiene management guideline and tools.

P&B Output Code	WASH Outcome 1: Immediate reduction in risk of waterborne and water related diseases in targeted communities	# of households provided with safe water services that meet agreed standards according to specific operational and programmatic context (target: 1,965 people)																
P&B Output Code	WASH Output 1.2: Daily access to safe water which meets Sphere and WHO standards in terms of quantity and quality is provided to target population	# of people have access to safe water (target: 2,500 people) # of liters of safe water distributed																
	Activities planned	Week	1	2	3	4	5	6	7	8	9	10	11	12	13	14	15	16
AP026	Provide safe water to around 3,000 households in targeted communities through rehabilitation of water piping system.		x	x	x	x	x	x	x	x	x	x	x	x	x	x	x	x
AP026	Monitor use of water through household surveys and household water quality tests																	
P&B Output Code	WASH Output 1.5: Hygiene-related goods (NFIs) which meet Sphere standards and training on how to use those goods is provided to the target population	# of households provided with hygiene kits (target: 300)																
	Activities planned	Week	1	2	3	4	5	6	7	8	9	10	11	12	13	14	15	16
AP030	Determine the needs for hygiene household items, including soap, water storage, and menstrual hygiene for each community based		x	x	x	x	x	x										

	on health risks and user preference in targeted communities in coordination with the WASH group or cluster																	
AP030	Train population of targeted communities in the use of distributed hygiene kits																	
AP030	Replenishment for 300 hygiene kits, sufficient for 4 months to 300 households		x	x	x	x	x	x	x									
AP030	Monitor use of hygiene kits through household surveys			x	x						x	x	x	x				
P&B Output Code	WASH Output 1.4: Hygiene promotion activities which meet Sphere standards in terms of the identification and use of hygiene items provided to target population.	<i># of people reached by hygiene promotion activities (target: 2,500 people)</i>																
	Activities planned	Week	1	2	3	4	5	6	7	8	9	10	11	12	13	14	15	16
AP030	Conduct assessment to define hygiene issues, assess capacity to address the problem, and ensure the community participation for the program adaption or IEC development		x	x	x	x	x											
AP030	Develop a hygiene communication plan. Train volunteers to implement activities from communication plan.																	
AP030	Design/Print IEC materials							x	x	x	x	x	x	x	x			
AP030	Assess progress and evaluate results.			x	x	x	x	x	x	x	x	x	x	x	x	x	x	x



Protection, Gender and Inclusion

People targeted: 10,965

Male: 5,592

Female: 5,373

Requirements (CHF): 1,600

Needs analysis: Based on lessons learned from recent operations and global standards, disaster affected women, girls, men boys are at higher risk to SGBV such as a domestic violence, child marriage, sexual harassment and come under pressure from reduced financial resources and uncertainty event. Displaced households who are staying in evacuation centres are at high risk in this respect. IFRC CCD will support PMI to undertake an assessment of protection, gender and inclusion needs in the evacuation centers with consideration of issues such as accessibility of all services by people with disabilities, elderly people and households with babies. In addition, the PGI team will also support the different technical teams to mainstream PGI in their respective responses by taking into consideration dignity, access, participation and safety (DAPS) in their respective response plans.

Risk analysis: Increased exposure to gender, protection, and inclusion issues due to displacement, disaster impacts and uncertainties on the situation.

Population to be assisted: The PGI assessment and integration will focus upon the service delivery for 10,965 people in the affected communities.

Program standards/benchmarks: The operation will seek to follow IFRC's Minimum Standards on PGI

P&B Output Code	Protection, Gender & Inclusion Outcome 1: Communities become more peaceful, safe, and inclusive through meeting the needs and rights of the most vulnerable.																	
	Protection, Gender & Inclusion Output 1.1: Programmes and operations ensure safe and equitable provision of basic services, considering different needs based on gender and other diversity factors.																<i>The operation demonstrates evidence of addressing the specific needs to ensure equitable access to disaster response services. (Target: Yes)</i> <i>The operation demonstrates evidence of compliance with IFRC minimum standard commitment to gender and diversity in emergency programming. (Target: Yes)</i>	
	Activities planned	Week	1	2	3	4	5	6	7	8	9	10	11	12	13	14	15	16
AP031	Assess specific needs of the affected population based on criteria selected from the minimum standards for PGI in emergencies and with CEA approaches.		x	x	x	x												
AP031	Support sectoral teams to include measures to address vulnerabilities specific to gender and diversity factors (including people with disabilities) in their planning		x	x	x	x	x	x	x	x	x	x	x	x	x	x	x	x
AP031	Support sectoral teams to ensure collection and analysis of sex-age and disability-disaggregated data (see guidance in Minimum Standards)		x	x	x	x	x	x	x	x	x	x	x	x	x	x	x	x

Strategies for Implementation

Requirements (CHF): 29,200

P&B Output Code	S1.1: National Society capacity building and organizational development objectives are facilitated to ensure that National Societies have the necessary legal, ethical and financial foundations, systems and structures, competences and capacities to plan and perform																
	Output S1.1.4: National Societies have effective and motivated volunteers who are protected								# of volunteers who support the operation (target: 30) # of volunteers who are insured through the operation (target:200)								
Activities planned	Week	1	2	3	4	5	6	7	8	9	10	11	12	13	14	15	16
AP040	Ensure that volunteers are insured	x	x	x	x	x	x	x	x	x	x	x	x	x	x	x	x
AP040	Provide complete briefings on volunteers' roles and the risks they face, and training session on safe emergency response in COVID-19 situation	x	x	x	x												
AP040	Ensure volunteers are aware of their rights and responsibilities	x	x	x	x	x	x	x	x	x	x	x	x	x	x	x	x
P&B Output Code	Outcome S2.1: Effective and coordinated international disaster response is ensured								A Lessons Learned workshop is undertaken at the end of the operation (Target: Yes)								
	Output S2.1.1: Effective and respected surge capacity mechanism is maintained.								# of staff and volunteers participating in lessons learned workshop (Target: 30)								
Activities planned	Week	1	2	3	4	5	6	7	8	9	10	11	12	13	14	15	16
AP052	IFRC Monitoring and evaluation	x	x	x	x	x	x	x	x	x	x	x	x	x	x	x	x
AP055	Lesson learnt workshop														x	x	x
P&B Output Code	Outcome S2.2: The complementarity and strengths of the Movement are enhanced								Complementarity and strengths of the Movement enhanced (Target: Yes)								
	Output S2.2.5: Shared services in areas such as IT, logistics and information management are provided								Operation is 100% compliant with IFRC procurement procedures								
Activities planned	Week	1	2	3	4	5	6	7	8	9	10	11	12	13	14	15	16
AP052	IFRC to replenish and restock PM relief items distributed to the affected communities	x	x	x	x	x	x	x	x	x	x	x	x	x	x	x	x
P&B Output Code	Output S4.1.3: Financial resources are safeguarded; quality financial and administrative support is provided contributing to efficient operations and ensuring effective use of assets; timely quality financial reporting to stakeholders								Operation is 100% compliant with IFRC financial procedures								
	Activities planned	Week	1	2	3	4	5	6	7	8	9	10	11	12	13	14	15
AP064	Finance oversight from IFRC provided, including field monitoring	x	x	x	x	x	x	x	x	x	x	x	x	x	x	x	x
AP065	Administration support by IFRC	x	x	x	x	x	x	x	x	x	x	x	x	x	x	x	x

Funding Requirements

International Federation of Red Cross and Red Crescent Societies

all amounts in Swiss Francs (CHF)

DREF OPERATION

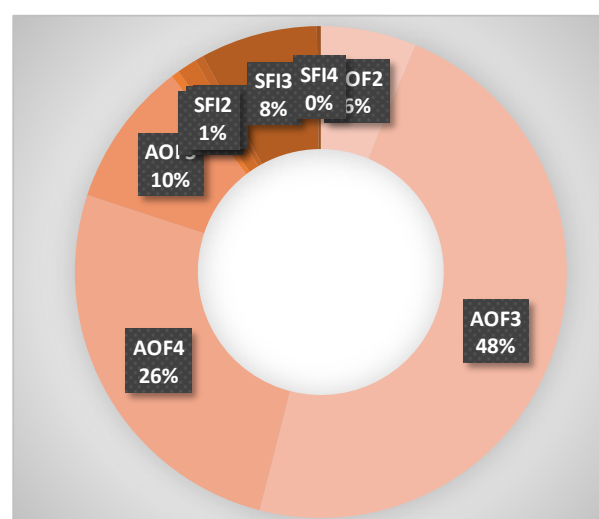
MDRID023 Indonesia: Semeru Vocano Eruption

Budget by Resource

Budget Group	Budget
Shelter - Relief	5,700
Clothing & Textiles	1,550
Water, Sanitation & Hygiene	25,100
Medical & First Aid	75,200
Teaching Materials	4,500
Other Supplies & Services	12,000
Cash Disbursement	138,570
Relief items, Construction, Supplies	262,620
National Society Staff	11,700
Volunteers	11,930
Personnel	23,630
Workshops & Training	6,960
Workshops & Training	6,960
Travel	7,700
Office Costs	3,500
Communications	300
Financial Charges	800
General Expenditure	12,300
DIRECT COSTS	305,510
INDIRECT COSTS	19,858
TOTAL BUDGET	325,368

Budget by Area of Intervention

AOF1	Disaster Risk Reduction	
AOF2	Shelter	20,501
AOF3	Livelihoods and Basic Needs	155,256
AOF4	Health	84,795
AOF5	Water, Sanitation and Hygiene	31,162
AOF6	Protection, Gender and Inclusion	1,704
AOF7	Migration	
SFI1	Strengthen National Societies	4,260
SFI2	Effective International Disaster Management	1,811
SFI3	Influence others as leading strategic partners	25,028
SFI4	Ensure a strong IFRC	852
TOTAL		325,368



Reference documents



Click here for:

- Previous Appeals and updates
- Emergency Plan of Action (EPoA)

For further information, specifically related to this operation please contact:

Indonesian Red Cross Society NHQ, Jakarta:

- Sudirman Said; Secretary General; Mobile : +62 811 811 945; email: sudirman_said@pmi.or.id
- Abdul Azis; PMI HQ Head of Office; phone: +62 812 901 2650; email: abdul_azis@pmi.or.id

IFRC Country Cluster Support Team, Jakarta:

- Jan Gelfand, Head of CCST for Indonesia and Timor Leste and Representative to ASEAN; Mobile : +62 811 9690 8324; email: jan.gelfand@ifrc.org
- Ruth Lane, Programme Coordinator; mobile: +856 20929 16265; email: ruth.lane@ifrc.org

IFRC Asia Pacific Regional Office, Kuala Lumpur:

- Joy Singhal, Head of Health-Disaster, Climate and Crisis; email: joy.singhal@ifrc.org
- Yuki Masuda, Operations Coordinator; email: opscoord.southeastasia@ifrc.org
- Fadzli Saari, PMER Manager a.i; email: Fadzli.saari@ifrc.org

In IFRC Geneva

- Christina Duschl, senior officer, operations coordination; email: christina.duschl@ifrc.org
- Eszter Matyeka, senior officer, DREF; email: eszter.matyeka@ifrc.org

For IFRC Resource Mobilization and Pledges support:

- Alice Ho, partnership in emergencies coordinator; email: PartnershipsEA.AP@ifrc.org

How we work

All IFRC assistance seeks to adhere to the **Code of Conduct** for the International Red Cross and Red Crescent Movement and Non-Governmental Organizations (NGO's) in Disaster Relief and the **Humanitarian Charter and Minimum Standards in Humanitarian Response (Sphere)** in delivering assistance to the most vulnerable. The IFRC's vision is to inspire, **encourage, facilitate and promote at all times all forms of humanitarian activities** by National Societies, with a view to **preventing and alleviating human suffering**, and thereby contributing to the maintenance and promotion of human dignity and peace in the world.

The IFRC's work is guided by Strategy 2020 which puts forward three strategic aims:



Save lives,
protect livelihoods,
and strengthen recovery
from disaster and crises.



Enable **healthy**
and **safe** living.



Promote social inclusion
and a culture of
non-violence and **peace.**

Map of Affected Areas in East Java

