


www.ifrc.org
Saving lives,
changing minds.

Operation Update Report Vanuatu, Volcano Yasur

 International Federation
of Red Cross and Red Crescent Societies

DREF n° MDRVU009	GLIDE n° VO-2021-000174-VUT
Operation update n° 1; 25 February 2022	Timeframe covered by this update: 19 November 2021 to 18 February 2022
Operation start date: 19 November 2021	Operation timeframe: 4 months. End date: 31 March 2022
Funding requirements (CHF): N/A	DREF amount initially allocated: CHF 88,383
N° of people being assisted: 3,586 people/ 755 households	
Red Cross Red Crescent Movement partners currently actively involved in the operation: The Vanuatu Red Cross Society (VRCS) has been working closely with the International Federation of Red Cross and Red Crescent Societies (IFRC) Country Cluster Delegation in Suva to ensure response activities meet Disaster Relief Emergency Fund (DREF) requirements.	
Other partner organizations actively involved in the operation: The Tafea Provincial Government and Tafea Provincial Disaster Committee, Vanuatu National Disaster Management Office (NDMO), World Vision, Save the Children and Adventist Development and Relief Agency(ADRA).	

Summary of major revisions made to emergency plan of action:

This DREF Operations Update no. 1 extends the operation timeframe by one month until 31 March 2022 to accommodate international procurement of replenishment items. The items procured include 226 tarps, 807 hygiene kits, 1,616 jerry cans(10L) and will be replenished at VRCS headquarter and the Tafea Branch.

A. Situation analysis

The Vanuatu Meteorology and Geo-Hazards Department (VMGD) issued an update on 22 October 2021, indicating that the Yasur volcano alert was on Level 2¹ and the activity had intensified to the level of major unrest. According to observations on the ground, Yasur volcano had emitted massive plumes of volcanic ash and gas at approximately 1400hrs till late into the night. With this volcanic activity, the danger zone had increased to one km around the volcano cone, and the danger zone for life safety has moved to Danger Zone B (see a picture on [scenario planning](#)).

The Emergency Operation Center (EOC) was activated to monitor and report the acid rain that occurred on 21 October 2021, followed by the heavy ashfall on 22 October 2021. Heavy rainfall caused the landslide to fall into the volcano's crater, triggering the eruption. Ashfall fell towards the South East of the Island, which consists of one Area Council. The South East Tanna Area Council comprises 14 different tribes and has a total of 30 communities.

The Yasur volcanic activity analysis was conducted on 28 October. The volcano monitoring system confirmed that Yasur volcano remained at major unrest, with an ongoing explosion



Volcanic ash and gas plumes at Yasur Volcano, Tanna Island. Source: n/a

¹ Vanuatu Volcanic Alert level(VVAL) Lv..0 Normal, Lvl.1 Signs of Volcanic Unrest, Lvl.2 Major unrest, Lvl.3 Minor eruption, Lvl.4 Moderate eruption and Lvl.5 Very large eruption

accompanied by gas plumes and volcanic ash. The level of risk for visitors accessing areas from the crater rim to the parking area (Danger Zone A) remained high. With that activity level, villages near the volcano were at high-risk exposure to volcanic gases and/or ashfall impacts, depending on wind direction. Since October 2021, No further official updates have been reported from the Vanuatu authorities, but the needs of families affected by ashfall remained².

Summary of current response

Overview of Host National Society Response Action

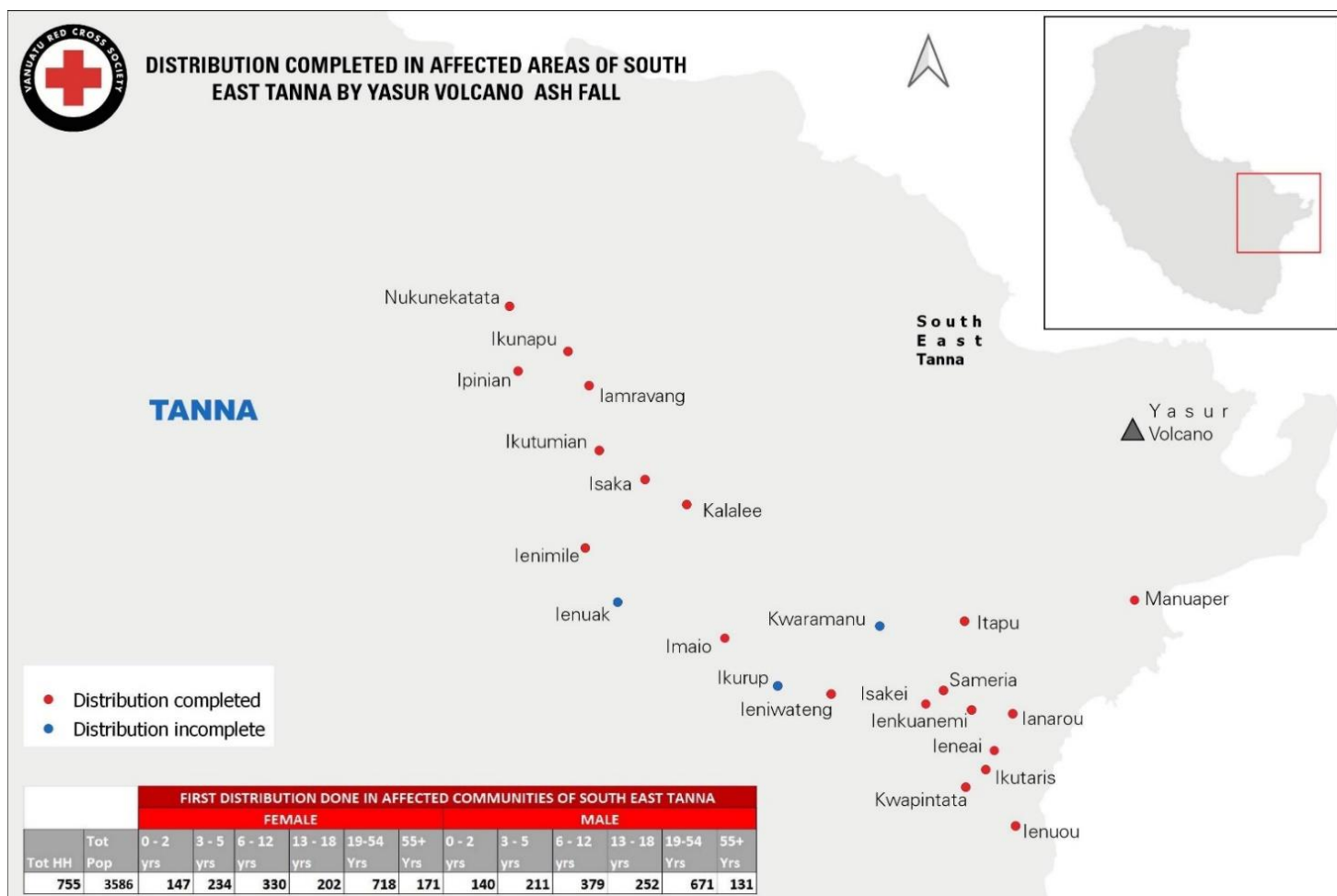
The VRCS has attended meetings organized by the provincial government to coordinate response since 22 October. The assessment team, including two volunteers of VRCS, was deployed to Tanna, where the Tafea provincial government office sits. On 28 October, through the assessment with the provincial government, VRCS had outlined the concrete steps to collaborate with stakeholders and plan a response with international support, applying for a DREF request. The agreement with the authorities was finalized with a clear intervention plan. As of 4 November. VRCS had decided to focus on the water, sanitation and hygiene (WASH), health, shelter and settlements, protection, gender and inclusion (PGI) support, considering the capacity of the National Society and in response to the request for sectoral focus from the Vanuatu Government. Cluster coordination meetings at the provincial level have been conducted regularly for shelter, WASH, health, gender and protection. The VRCS has provided support to the provincial government of Tafea as VRCS was one of the humanitarian agencies that responded to the Volcano ashfall. Tafea branch staff have continued to visit the red zone of Tanna around the volcano with provincial government staff to monitor the situation of affected communities.

Following experiences with past disasters, VRCS has made a significant investment in developing its capacity in disaster response. Over 120 volunteers have received emergency response training, and stocks of emergency relief supplies are prepositioned in six hubs/warehouses throughout the country. This has strengthened VRCS's position to respond with local volunteers on the ground, well-versed with response procedures. Volunteers are trained in aiding evacuees, assessing and distributing supplies to affected areas, providing first aid support, including psychological first aid (PFA), in coordination with other partners. These volunteers have recently received training in technical guidance for the distribution of shelter items and simultaneous psychosocial support (PSS).

VRCS Tafea branch had activated its EOC with this DREF fund and responded in coordination with the local government. Two staff and 20 Emergency Response Team (ERT)-trained volunteers who have experience based in Tafea province were mobilized.

The first distribution of household items (HHIs) conducted in the affected communities in Southeast Tanna had reached a total of 755 households (3,586 people) in 23 communities as indicated in the map below:

² Vanuatu Meteorology & Geo-Hazard Department (VMGD) bulletin: <https://www.vmqd.gov.vu/vmqd/index.php/geohazards/volcano/alert-bulletin>



VRCS response summary (photo: VRCS)

FIRST DISTRIBUTION DONE IN AFFECTED COMMUNITIES OF SOUTH EAST TANNA													
		FEMALE						MALE					
Tot HH	Tot Pop	0 - 2 yrs	3 - 5 yrs	6 - 12 yrs	13 - 18 yrs	1y-54 yrs	55+ Yrs	0 - 2 yrs	3 - 5 yrs	6 - 12 yrs	13 - 18 yrs	19-54 yrs	55+ yrs
755	3,586	147	234	330	202	718	171	140	211	379	252	671	131

The total of HHIs items that have been distributed included tarpaulins, jerry cans (10L), hygiene kits, menstrual health hygiene management (MHM) kits, psychosocial support (PSS) kits.

A second distribution to beneficiaries affected by the Yasur Volcano in Tanna is taking place as per the schedule:

Planned Dates	Detail Activities	Responsible
18 February 2022 19 February vessel departed for Tanna Island	<ul style="list-style-type: none"> Volunteers mobilized at headquarters Transportation of HHI transported from main wharf from headquarters HHIs loaded on board the arranged vessel The vessel departed to Tanna 	Logistic team
20 February 22	<ul style="list-style-type: none"> HHI's arrived at Tanna lenakel wharf HHI's unloaded on Tanna HHIs transported and stored safely at Tafea branch storage site. 	Nicholson and Tafea branch volunteers
21 - 22 February	<ul style="list-style-type: none"> HHI's distributed to the beneficiaries in south Tanna 	Nicholson and Tafea branch volunteers
24 - 28 February 2022	<ul style="list-style-type: none"> Conduct Post Distribution Monitoring (PDM) 	Nicholson and selected volunteers
1 - 4 March 2022	<ul style="list-style-type: none"> Conduct Lesson Learned Workshop (LLW) 	Headquarters staffs, Tafea branch Volunteers and relevant stakeholders
1 March 2002	<ul style="list-style-type: none"> Headquarters staff departed to Tanna, LLW 	Logistic and staff

4 March 2002	• Staff return to headquarters	Logistic and staff
7 - 20 March 2002	• Final DREF Report	DM and team, IFRC

Overview of Red Cross Red Crescent Movement Actions in country

IFRC CCD in Suva has been very supportive in finalizing the DREF application right through to the implementation of activities. This operation was seen as an anticipatory action to future ashfall events and volcanic eruptions in Vanuatu.

- A readiness and response manager had provided technical support to the VRCS emergency operations team. The CCD Shelter focal point has also shadowed the DRM coordinator once the readiness and response manager was remotely deployed to another operation.
- The logistics capacity development delegate has worked closely with the VRCS DM and logistics team, ensuring that proper procedures are followed under a procurement plan. The delegate has also sought approval from IFRC APRO for the possibility of locally sourced household items for distribution and prepositioning.
- The logistics manager CCD has been working very closely with VRCS logs team and IFRC APRO for international procurement of items.
- CCD health manager has been working with VRCS health officer coordinator to provide briefings to teams prepared for deployment to affected areas.

Overview of other actors' actions in country

The NDMO had activated the following mechanisms to manage the emergency response:

- National level:
 - Provincial Emergency Operations Centre
 - Provincial Disaster and Climate Change Committee
- Provincial level:
 - Area Council Secretaries
 - Line Ministries represented in the province
 - Provincial health coordinator
 - Working groups
 - Technical Advisory Committee (TAC)

Livelihoods were affected, although not severely, and the NDMO coordinated with the Tafea Provincial Government for food distributions to the population.

The government is developing national contingency plans for all volcanic activities in Vanuatu that will be finalized at the end of this year. The following provincial level clusters have been mobilized for response:

- Wash
- Health
- Food security and agriculture
- Gender and protection
- Education
- Logistics
- Shelter

NDMO has covered food security, agriculture, education, health and protection, and gender and inclusion (PGI), although the Health and PGI cluster role is divided between NDMO and VRCS. NDMO has also provided medical and technical assistance, while VRCS provided psychological first aid (PFA) support. VRCS has followed through on the government meeting with a contingency planning meeting of its own. It is anticipated that IFRC will be involved in this process.

Apart from VRCS and NDMO responding directly to the population affected by the ash fall, partner organizations such as World Vision, Save the Children, and Adventist Development and Relief Agency (ADRA) are also present. These organizations are currently working in Ambae through other community programmes unrelated to this DREF operation, and the National Society will collaborate and coordinate with them to ensure coherence.

Needs analysis, targeting, scenario planning and risk assessment

Needs analysis

The initial assessment conducted by NDMO found that the roofs of the traditional houses built in the Tanna region had collapsed due to the weight of the ashfall. The traditional housing structures are quite strong, but the roofs are made of natural materials and did not withstand the weight of the ashfall.

Reports from the Provincial Disaster Office indicated that people had no access to clean water due to the acid rain and ashfall contaminating most of the water sources, which corroborates with similar experiences in the past.

Furthermore, continuous ashfall and a potential future eruption can prolong current livelihood and health problems. Respiratory, skin irritation and eye problems may arise from contaminated water sources and air pollution. Livelihoods may be affected in the long-term, as people in Tanna rely on Kava, cash crops and livestock to provide income, food, household needs and school fees.

Needs identified by the cluster assessments which VRCS had focused on are:

- Support the protection of crops and families by distributing essential household items.
- Psychosocial support to address the emotional stress arising from the extended and ongoing risk of continued ashfall and eruption.
- Protection of water sources and remediation of contaminated water sources.

Special considerations were given to persons with disabilities, the elderly, women and children to ensure that they were safe in terms of their shelter, water access, sanitation, health and basic needs and not further exposed to any harm. Access to referral pathways and information for health or protection was provided where needed. Protection messaging and psychological first aid IEC materials were also disseminated during distributions. Additionally, support was provided to those requiring special assistance with their tarp installation.

Based on early assessments, VRCS initially planned to support 807 households/3,383 people with WASH, health and shelter and settlements interventions. This number has changed to 755 households/3,586 people following detailed assessments. The number of communities remains the same.

Name Of Tribe	Community	Total Population	Female population	Male Population	Total # of households
Reiunitata	Kwapitata (Iakuaring)	58	26	32	12
	Ieneai	68	33	35	14
	Ieneai	33	17	16	7
	Ianarou	27	12	15	6
	Ienuou	33	19	14	7
	Iakutaris	175	82	93	37
Nasipmine	Ienkuanemi	94	51	43	20
	Sameria	38	20	18	8
Naraimine	Manuapen (Etarip)	269	134	135	57
Karumine	Iatapu	336	170	166	71
	Kwaramanu (Iakoutapounga)	325	171	154	68
	Imaio (Ioknatahi)	369	173	196	78
Warumanaki	Ikurup (Iakrine)	164	78	86	35
Naurarimine	Ienvateng	243	123	120	51
Niamine	Isarkei	90	49	41	19
Iasuruvi	Kalalee	146	78	68	31
	Ienimilen	242	126	116	51
Narpai 1	Isaka	301	153	148	63
	Ikutemian	173	86	87	36
Narpai 2	Ikunapu	85	40	45	18
	Iamravang(Nazareth)	209	107	102	44
	Nukunekatata (Nazareth)	30	15	15	6
	Ipinian	78	39	39	16
Total	23 communities	3,586	1,802	1,784	755

Scenario planning

The government is in the process of developing national contingency plans for all volcanoes in Vanuatu. A national contingency planning workshop has been rescheduled to the end of the year. The VRCS had followed up with a contingency planning meeting of its own supported by IFRC. Several different scenarios require consideration: in the absence of a complete plan, the highlighted scenarios will help determine the potential needs of the affected population.

- Scenario 1: Worst affected populations in Red Zone (Permanent Exclusion Zone)
- Scenario 2: Population in the Yellow Zone (Danger Zone A + Car Park) and
- Scenario 3: Population in the Blue Zone (Danger Zone B)

As identified, the only areas affected are within the 5km radius. It is anticipated that the Yellow and Blue zones may be impacted if the situations escalate.



Scenario	Humanitarian consequence	Potential Response
Continued eruptions of Tanna-Yasur Volcano affect the population in the Yellow Zone at the alert level 2-3, and the funds required exceeds the resources available through the DREF.	Medium/High	Expand the operation under this DREF operation, including an increase in funding requirement and timeframe through coordination with the government according to the developing contingency plan
Further intensification of volcanic activity severely affects populations in Red Zone at level 4-5. The funds required exceeds the resources available through the DREF.	High	Expand the operation under this DREF operation, including an increase in funding requirement and timeframe, coordinated with the government according to the developing contingency plan

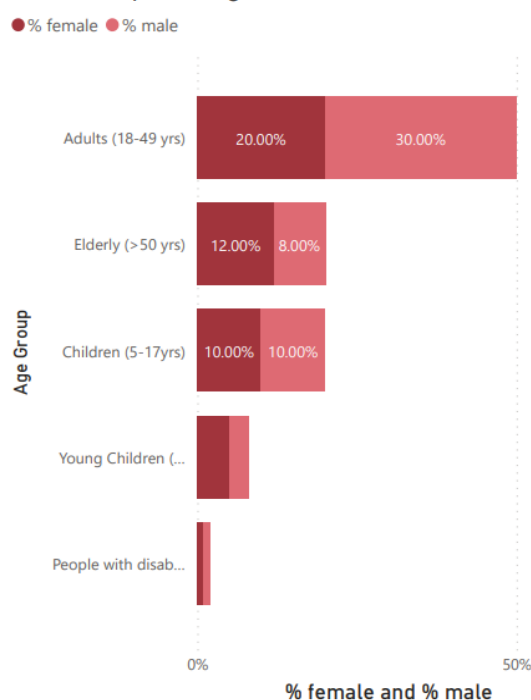
Needs will likely evolve with the situation and VRCS will remain flexible to ensure an efficient and effective response by monitoring the affected areas and coordinating with NDMO and the Met Service.

Targeting

In line with planning coordination advised by the provincial government through NDMO, VRCS had mainly targeted populations of the South and East area of Tanna. The response was based on the household level. At the initial stage, VRCS had targeted 807 households in priority areas in the south and South East of Tanna Island.

VRCS had decided to support up to 807 households with WASH and provide shelter assistance to only 113 households whose houses needed roof repairs because of the heavy ashfall damage. These 113 households had traditional homes and used thatched roofing. Families were provided with temporary shelter assistance according to the assessment result. The VRCS has the latest population data that enabled targeted assistance, including vulnerable households. Vulnerability assessment criteria also include female-headed households, the elderly and people with disabilities.

Estimated disaggregated data of people to be assisted in percentages



Estimated disaggregated data for population targeted

Category	Estimated % of target group	% female	% male
Young Children (under 5 years)	8%	5%	3%
Children (5-17yrs)	20%	10%	10%
Adults (18-49 yrs)	50%	20%	30%
Elderly (>50 yrs)	20%	12%	8%
People with disabilities	2%	1%	1%
Totals	100%	48%	52%

Operation Risk Assessment

Heavy ashfall poses significant health and safety risks for VRCS staff and volunteers deployed to the field. Health risks include respiratory illness, contaminated water and lack of food. In response, staff and volunteers were provided with personal protective equipment with sufficient water and food daily. The volcano's activity and its effects were closely monitored through liaising with the VMGD and staff and volunteers on the ground to ensure their safety.

B. Operational strategy

Overall Operational objective:

Based on the request from the provincial disaster officer to assist with shelter, water and health activities, the disaster-affected population's immediate needs are met through:

- Emergency shelter assistance for 113 households
- WASH support to 807 households
- Psychological first aid to all households visited during the assessments and distributions.

The assessment results in the emergency response mechanism by NDMO with VRCS would show more detailed needs for support.

Proposed strategy

VRCS's early action and readiness strategy focus on two main areas of support:

1. Supplying the affected population with essential household items (emergency shelter, hygiene kits and water filtration)
2. Ensuring essential information reaches the affected population based on the needs through PSS messages and the PSS kits

This PSS kit includes a volleyball, a volleyball net for adults and board games for young kids. VRCS' activities are managed jointly by the headquarters and Tafea branch.

The following essential items have been distributed to 755 households in the first distribution phase to the affected population. The second round of distribution is currently being conducted for the rest of this month. Due to current stock levels, VRCS will coordinate with other agencies if required to fill any gaps. The National Society have utilized disaggregated population data and beneficiary registrations to target the most vulnerable in the initial distribution.

Items	Qty to be distributed	Qty for replenishment	Local/International Replenishment
Tarpaulins	226	226	International replenishment
Hygiene Kits	807	807	International replenishment
Jerrycans (10L)	1616	1616	International replenishment
Water filtration (20L)	350	350	Local procurement
Menstrual Health Hygiene (MHM) Kits	350	350	Local Procurement
PSS Kit	30	30	Local Procurement

Planned distribution for 755 households affected by the Tanna-Yasur Volcano

Information and communication

Through the volunteer networks in Tafea province, the affected population are kept informed of updates on the evacuation process and planning. Awareness activities have also been conducted on water filtration and hygiene promotion to reduce the immediate health risks in the communities. IEC materials and safe shelter awareness have been provided to affected households that received tarpaulins. The VRCS has been working off the best information available to plan its response. It regularly contacts relevant government agencies and clusters to ensure a coordinated and effective response. The VRCS has designed this response after briefings with the provincial government and relevant clusters. Food and water-trucking are another significant need and has been covered under the response by the provincial government and NDMO. All response activities are closely implemented with, and facilitated by, volunteers from the VRCS trained Community Disaster and Climate Change Committees (CDCCs), local authorities, Area Council Secretary (ACS), and communities.

Operational support services

Human resources

The following human resources have been, or will be, mobilized within VRCS for the response activities:

- DM coordinator
- Tafea branch officer
- Tafea support officer
- Twenty volunteers across the branch.

Logistics and supply chain

Logistics activities aim to effectively manage the supply chain, including procurement, customs clearance, storage and transport to distribution sites following the operation's requirements and aligned to IFRC's logistics standards, processes and procedures.

VRCS has a logistics team and logistics volunteers trained during the TC Pam operation by the IFRC logistics delegate and have been able to share more knowledge with administrative and logistics support. The IFRC warehouse management software, Logic, was implemented in the TC Pam operation and is currently used for supply chain management within the VRCS logistics system. The VRCS logisticians in Port Vila will oversee local freighting customs clearances for international replenishments. Local goods and services procurement will be observed in line with VRCS practices and IFRC Procurement Procedure. The Tafea branch has a VRCS vehicle used to transport HHIs to the affected areas and is supported by the local Government vehicles to transport HHIs if needed.

The international procurement was processed upon confirmed numbers reflected from distribution. These NFI's must be replenished for any future operations as we are still in the disaster period. However, looking at the DREF timeline, the duration of good transit and freight challenges, more time is needed for the operation. According to the current estimated arrival time, the internationally procured items will arrive in Vanuatu in mid-March, with possible clearance before the end of the month if no further shipment delays are reflected.

Information technologies (IT)

Internet connectivity is an issue in the affected areas, but mobile communications are mostly reliable at this stage.

Communications

The IFRC supports the VRCS communications team to communicate with external audiences focusing on the volcano disaster and the Red Cross humanitarian action assisting people affected. The communications have generated visibility and support for the humanitarian needs and the Red Cross Red Crescent response. Close collaboration continues between the Asia Pacific IFRC regional communications unit, IFRC CCD and the National Society, ensuring a coherent and coordinated communications approach.

Communications content is promoted on regional and global IFRC channels and shared with National Societies in the IFRC network. VRCS uses social media to update the volcano's status and disaster response for general viewers and followers of the [VRCS Facebook page](#) and post updates on the website. The communications officer has worked on composing press releases for the local media. The following staff were also delegated to handle media inquiries: OD coordinator, DM coordinator, and the Secretary-General, supported by the IFRC Pacific communications manager with media and social media scanning.

Security

The main security threat to staff and volunteers working on this response is the ongoing volcano ashfall. Volcanic gases and ashfall may impact health, given the current alert level. The VRCS had supplied deployed staff and activated volunteers with protective equipment, including masks, to minimize these risks to individual safety and security. Staff deployed to affected areas also needed to travel with food and water to limit strain on local resources. The VRCS continues to monitor updates and advice from the VMGD and other authorities and adapt their activities accordingly.

Planning, monitoring, evaluation and reporting (PMER)

The departments of the VRCS headquarters in Port Vila, such as disaster risk management, WASH, PMER, finance and management, continue to monitor the Plan of Action. The IFRC CCD Pacific's disaster risk management (DRM) team provides support for communications and coordination.

Reporting on the emergency plan of action is carried out according to IFRC minimum standards. Monitoring visits to the affected communities are ongoing to regularly conduct, assess progress and guide any required adjustments to the proposed response. Monitoring includes a beneficiary satisfaction survey and interviews with staff, volunteers and others

participating in the response. After the operation, a PDM and reflection workshop will be carried out by VRCS staff, volunteers and relevant stakeholders.

Phases of PMER undertaken as per usual VRCS processes. For these operations, this includes:

- Planning a response scenario should the impact of drought intensify, based on the analysis of the assessment
- Daily team monitoring with the VRCS headquarters to ensure data quality
- Pre and post-tests for all training to monitor learning and impact for all volunteers on all islands
- PDM after the distribution of all response items
- A final lesson learned workshop to reflect on the intervention and generate reflections on volcano early warning early action plans, procedures and processes for the future.

Community Engagement and Accountability

CEA has included a detailed community assessment that helped VRCS revise the number of targeted households. Special considerations are given to persons with disabilities, the elderly, women and children to ensure that they are safe in their shelter, water access, sanitation, health and basic needs and not further exposed to harm.

Community awareness activities have included water filtration and hygiene promotion to reduce the immediate health risks in the communities, community messaging on protection and psychological first aid IEC materials dissemination to affected communities during distributions. Community access to referral pathways and information for health or protection was provided where needed.

Through the volunteer networks in Tafea province, the affected population is kept informed of updates on the evacuation process and planning. Staff and volunteers are regularly deployed to the field to monitor the situation on the ground.

There will be a PDM exercise after the second round of distribution and lesson learning workshop conducted with staff, volunteers and stakeholders at the end of the operation.

Administration and Finance

VRCS headquarters has a finance team that supports the logistician/administrator in the field with all activities necessary to ensure the proper use of resources. The logistician/administrator coordinates with the operations manager for any expenditure or purchase during the operation, and resources are utilized following standard VRCS and DREF guidelines and procedures.

C. Detailed Operational Plan



Shelter

People reached: 1330 (252 households)

Male: 657

Female: 673

Outcome 1: Communities in disaster and crisis affected areas restore and strengthen their safety, well-being and longer-term recovery through shelter and settlement solutions

Indicators:	Target	Actual
# households reached with shelter assistance	113 (567 people)	252 (1330 people)
Output 1.1: Shelter and settlements and basic household items assistance is provided to the affected families.		
Indicators:	Target	Actual
# households provided with emergency shelter items, to have a space that meets the minimum living conditions	113	252
Output 1.2: Technical support, guidance and awareness raising in safe shelter design and settlement planning and improved building techniques are provided to affected households		
Indicators:	Target	Actual
# of households provided with technical guidance appropriate to the type of support they receive	113	252

Progress towards outcomes

- Data provided on this report are activities implemented from the start of the operation till 15 February 2022.
- The initial target was to reach 113 households with 226 tarpaulins to provide each household with two (2) tarpaulins. During the assessment and distribution, it was observed and considered to distribute one tarpaulin to each of the 252 households in affected communities in the South East of Tanna Island as the need for tarpaulins was observed to be greater.
- A half-day refresher training with VRCS volunteers was facilitated by the VRCS headquarters staff who travelled down to Tanna. This training included emergency safe shelter awareness for the proper use and reuse of tarpaulins and guidance on fixing of tarpaulins. This focussed on an existing Vanuatu Shelter Cluster IEC material³.
- The shelter IEC material mentioned above was printed and distributed to all the households receiving tarpaulins.

Name of Community	Number of Households
Lenkuanemi	35
Sameria	18
Iatapu	13
Kwaramanu (Iakoutapounga)	73
Imaio (Ioknatahi)	49
Isarkei	64
Total	252

The table lists down the six communities and the number of households reached with the distribution of tarpaulins and technical guidance on the proper use, reuse and disposal of tarpaulins.



Half-day refresher training with VRCS Volunteers facilitated by the VRCS HQ Staff . Photo credit: VRCS

³ Use, reuse, repair and disposal of tarpaulins (v1 Jun 2020): <https://www.sheltercluster.org/vanuatu/documents/use-reuse-repair-and-disposal-tarpaulins-v1-jun-2020>



Health

People reached: 3,586

Male: 1,784

Female: 1,802

Outcome 1: The immediate risks to the health of affected populations are reduced

Indicators:	Target	Actual
# of people reached by NS with services to reduce relevant health risk factors	807	3,586

Output 1.1: The health situation and immediate risks are assessed using agreed guidelines

Indicators:	Target	Actual
# of assessments conducted based on standard IFRC and/or WHO assessment guidelines	1	1
# of people reached by community-based health activities	3393	3,586

Outcome 6: The psychosocial impacts of the emergency are lessened

Indicators:	Target	Actual
# households reached by psychological first aid	807	755

Output 6.1: Psychosocial first aid (PFA) support provided to the target population as well as to volunteers and staff

Indicators:	Target	Actual
# of people reached by psychosocial support specifically for survivors of sexual and/or gender based violence	3,393	3,586

Progress towards outcomes

- A half-day refresher briefing for volunteers has ensured they are equipped with health messaging and awareness on the health impacts of the volcanic eruption. From this, a total of 3,586 people across the affected communities in Southeast Tanna have been reached with awareness and relevant health IEC materials with the provision of psychosocial support. Community messaging on protection and psychological first aid IEC materials have been disseminated to affected communities. Awareness on hygiene promotion to reduce the immediate health risks in the communities have also been also conducted during distributions.
- A total of 755 households have received psychological first aid. This was delivered in a number of ways – face to face in group settings and targeted at a household level to those assessed as most vulnerable and/or with special needs.



Water, sanitation and hygiene

People reached: 3,586

Male: 1,784

Female: 1,802

Outcome 1: Immediate reduction in risk of waterborne and water related diseases in targeted communities

Indicators:	Target	Actual
# of households provided with safe water services that meet agreed standards according to specific operational and programmatic context	807	755

Output 1.1: Daily access to safe water which meets Sphere and WHO standards in terms of quantity and quality is provided to target population

Indicators:	Target	Actual
# of people provided with safe water (according to WHO standards)	3,393	3,586

Output 1.4: Hygiene promotion activities which meet Sphere standards in terms of the identification and use of hygiene items provided to target population

Indicators:	Target	Actual
# of people reached with awareness materials	3,393	3,586

Output 1.5: Hygiene-related goods (NFIs) which meet Sphere standards and training on how to use those goods is provided to the target population

Indicators:	Target	Actual
# of households provided with a set of essential hygiene items	807	755

Progress towards outcomes

- Hygiene promotion IEC materials were printed and distributed to the beneficiaries in the affected areas. A half-day training was held between VRCS headquarters staff and VRCS Branch volunteers which covered health, PSS and hygiene promotion to ensure that volunteers were well equipped with awareness messaging to be disseminated to communities.
- A total of 755 hygiene kits were distributed to the 755 affected households in the 23 communities. 1,316 jerry cans (water containers) were distributed to the affected households in 18 communities.
- Up to 350 menstrual hygiene management (MHM) kits have also been distributed to affected communities. The contents of the MHM kits are as follows (see table).
- It was determined during the assessments and distribution that only 22 PSS kits were needed to be distributed to 22 communities.
- A total of 350 water filtration units are yet to be distributed and the breakdown of the distribution data will be reported in the final report. Awareness on the proper usage of the water filtration units will also be covered during the distribution of the units.

Items in the MHM kit	Quantity
Ladies under wear (Large)	1
Ladies under wear (XL)	1
Towel	1
Laundry soap	1
Body soap	1
Sanitary pads (disposal)	1 pkt
Clothes Line	1
Clothes peg	1 pkt

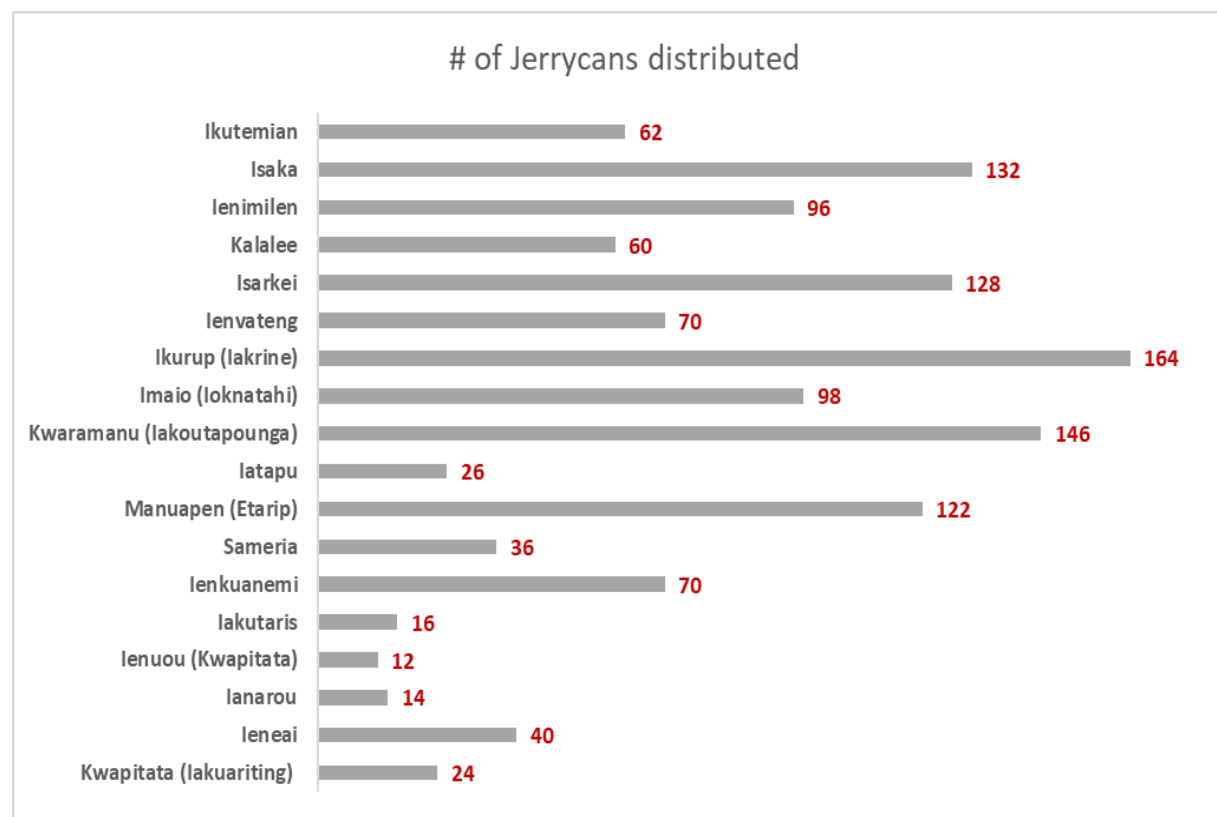
The image below depicts a member of the affected community in tanna who was reached with relief items, IEC materials and technical guidance.



Communities affected by the Ashfall have been reached with tarpaulins, hygiene kits, jerry cans, menstrual hygiene kits and PSS kits. IEC materials and technical guidance was also provided to affected households on emergency shelter, WASH, PSS and PGI. Photo credit: VRCS.

The table and graph below illustrate the number of jerry cans distributed to 18 affected communities in Tanna.

Community	# of jerry cans distributed
Kwapitata (Iakuariting)	24
Ieneai	40
Ianarou	14
Ienuou (Kwapitata)	12
Iakutaris	16
Ienkuanemi	70
Sameria	36
Manuapen (Etarip)	122
Iatapu	26
Kwaramanu (Iakoutapounga)	146
Imaio (Ioknatahi)	98
Ikurup (Iakrine)	164
Ienvateng	70
Isarkei	128
Kalalee	60
Ienimilen	96
Isaka	132
Ikutemian	62
Total	1316





Protection, Gender and Inclusion

People reached: 3586

Male: 1784

Female: 1802

Outcome 1: Communities become more peaceful, safe and inclusive through meeting the needs and rights of the most vulnerable.

Indicators:	Target	Actual
<i>Does the operation demonstrate evidence of addressing specific PGI needs?</i>	Yes	Yes
Output 1.1: Programmes and operations ensure safe and equitable provision of basic services, considering different needs based on gender and other diversity factors.		
Indicators:	Target	Actual
<i>Does the operation meet minimum standards for PGI in emergencies?</i>	Yes	Yes
Indicators:	Target	Actual
<i>Does the operation demonstrate evidence of addressing the specific needs to ensure equitable access to disaster response services?</i>	Yes	Yes
<i># of children reached with protection or educational activities</i>	n/a	n/a

Progress towards outcomes

- PGI considerations were integrated into the operations. Community messaging included violence against women, child protection, sexual and gender-based violence in emergencies and referral pathways.
- National Society faced challenges in gathering people together due to COVID19 restrictions thus they had to rethink innovative ways of working in the community. VRCS provided IEC materials which included safety and protection messages above, instead of gathering beneficiaries in one location, beneficiaries listened in from their respective homes whilst awareness was done through a haler.

Strategies for Implementation

Requirements (CHF): 23,280

Strengthen National Society

Outcome S1.1: National Society capacity building and organizational development objectives are facilitated to ensure that National Societies have the necessary legal, ethical and financial foundations, systems and structures, competences and capacities to plan and perform

Indicators:		Target	Actual
<i>NS have prepositioned masks and other PPE (not relevant)</i>		N/R	N/R
Output S1.1.4: National Societies have effective and motivated volunteers who are protected			
Indicators:		Target	Actual
<i># of volunteers insured (not relevant)</i>		N/R	N/R
<i>% of staff and volunteers are provided with necessary PPE (not relevant)</i>		N/R	N/R
Progress towards outcomes			
<ul style="list-style-type: none"> As the preposition masks and other PPE were not covered in this DREF response but under COVID19 Appeal response, and the NS's other budget covered the insurance of volunteers, the indicators above become void and will be removed. The initial plan was to locally procure PPEs such as medical masks and goggles for the VRCS volunteers and medical masks to be distributed to communities to minimize risks to individual safety and security from volcanic gaseous ashfall. However, due to internal IFRC processes for the procurement of PPEs, this had to be done under international procurement. During the assessment and distribution carried out by the VRCS team, the PPEs were determined to be of a lesser need for the current operation since the volcano was active but no longer spewing ash. It was determined that it is necessary to preposition it for future volcano responses, especially since it cannot be procured locally. The operation was slightly delayed due to bad weather and office closures of shipping companies and shops (for local procurement) in December and January. The significant delays in international procurement have brought about a need to extend the DREF. 			
Outcome S2.1: Effective and coordinated international disaster response is ensured			
Indicators:		Target	Actual
<i>NS coordinated international disaster response effectively</i>		Yes	Yes
Output S2.1.3: NS compliance with Principles and Rules for Humanitarian Assistance is improved			
Indicators:		Target	Actual
<i>DREF procedures are applied during the implementation of the operation</i>		Yes	Yes
Progress towards outcomes			
Results of this outcome and outputs shall be determined from the lessons learned workshop that will be held after PDM activity.			
Outcome S4.1: The IFRC enhances its effectiveness, credibility and accountability			
Indicators:		Target	Actual
<i>Lessons learned workshop findings endorsed by NS</i>		Yes	Not started
Output S4.1.2: IFRC staff shows good level of engagement and performance			

Indicators:	Target	Actual
<i># of lessons learned workshops that involve staff/volunteers</i>	1	Not started
Progress towards outcomes		
The lessons learned workshop will be held at the end of the operation. The PDM activity will be carried outs after all the distributions.		

D. Financial Report

The financial report is available at the end of the DREF Operations Update.

Reference documents



Click here for:

- Previous Appeals and updates
- Emergency Plan of Action (EPoA)

For further information, specifically related to this operation please contact:

In the Vanuatu Red Cross Society

- Secretary General: Name- Dickinson Tevi, email: sg@redcrossvanuatu.com, phone: (678) 7747847
- DM Coordinator: Name: Augustine Garae, title: DM Coordinator, email: disaster.coordinator@redcrossvanuatu.com, phone: (678) 7743029

In the IFRC Country Cluster Delegation in Suva

- Katie Greenwood, Pacific CCD Head of Office, email: Katie.greenwood@ifrc.org; Phone: (679) 9992485
- Carla Taylor, title: DRM coordinator, email: CARLA.TAYLOR@ifrc.org, phone: (679) 9987843
- Esaroma Ledua, title: Readiness and Response Manager, email: Esaroma.Ledua@ifrc.org; phone: (679) 9992470

In the IFRC Asia Pacific Regional Office, Kuala Lumpur

- Alexander Matheou, regional director; email: alexander.matheou@ifrc.org
- Joy Singhal, Head of HDCC unit; email: joy.singhal@ifrc.org
- Yuki Masuda, Operations Coordinator; email: OpsCoord.Pacific@ifrc.org
- Fadzli Saari, PMER Manager; email: Fadzli.saari@ifrc.org
- Siokkun Jang, Logistics Manager; email: siokkun.jang@ifrc.org
- Antony Balmain, Communications Manager; email: antony.balmain@ifrc.org
- Alice Ho, Partnerships in Emergencies Coordinator; email: PartnershipsEA.AP@ifrc.org

In IFRC Geneva

- Christina Duschl, senior officer, operations coordination; email: christina.duschl@ifrc.org

How we work

All IFRC assistance seeks to adhere to the **Code of Conduct** for the International Red Cross and Red Crescent Movement and Non-Governmental Organizations (NGO's) in Disaster Relief and the **Humanitarian Charter and Minimum Standards in Humanitarian Response (Sphere)** in delivering assistance to the most vulnerable. The IFRC's vision is to inspire, **encourage, facilitate and promote at all times all forms of humanitarian activities** by National Societies, with a view to **preventing and alleviating human suffering**, and thereby contributing to the maintenance and promotion of human dignity and peace in the world.

The IFRC's work is guided by Strategy 2020 which puts forward three strategic aims:



Save lives,
protect livelihoods,
and strengthen recovery
from disaster and crises.



Enable **healthy**
and **safe** living.

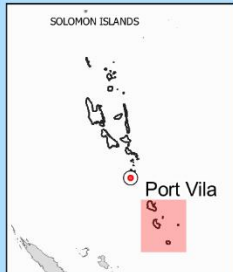
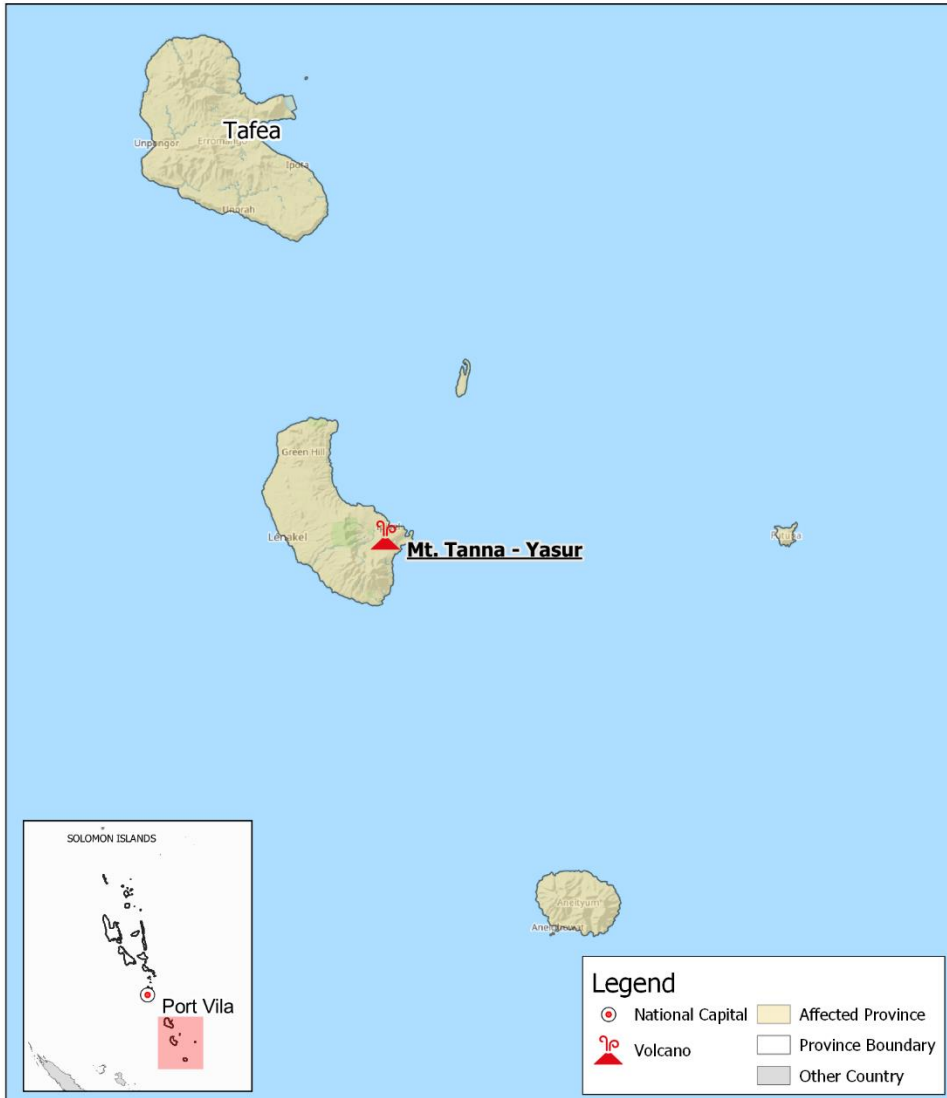


Promote **social inclusion**
and a culture of
non-violence and peace.



**Vanuatu: Tanna- Yasur Volcano
Emergency Plan of Action (EPOA)**

15 November 2021



The maps used do not imply the expression of any opinion on the part of the International Federation of the Red Cross and Red Crescent Societies or National Societies concerning the legal status of territory or its authorities. Map data sources: OCHA, OSM Contributors, IGR, IFRC, GDACS (5 April 2020)

DREF Operation

Selected Parameters			
Reporting Timeframe	2021/11-2022/1	Operation	MDRVU009
Budget Timeframe	2021/11-2022/1	Budget	APPROVED

INTERIM FINANCIAL REPORT

Prepared on 23/Feb/2022

All figures are in Swiss Francs (CHF)

MDRVU009 - Vanuatu - Volcano Yasur

Operating Timeframe: 18 Nov 2021 to 28 Feb 2022

I. Summary

Opening Balance	0
Funds & Other Income	88,383
DREF Allocations	88,383
Expenditure	-37,685
Closing Balance	50,698

II. Expenditure by area of focus / strategies for implementation

Description	Budget	Expenditure	Variance
AOF1 - Disaster risk reduction			0
AOF2 - Shelter	6,946	1,087	5,859
AOF3 - Livelihoods and basic needs			0
AOF4 - Health	10,424	2,253	8,171
AOF5 - Water, sanitation and hygiene	22,091		22,091
AOF6 - Protection, Gender & Inclusion	6,816	2,651	4,165
AOF7 - Migration			0
Area of focus Total	46,277	5,990	40,287
SFI1 - Strengthen National Societies	1,704	31,695	-29,991
SFI2 - Effective international disaster management	10,650		10,650
SFI3 - Influence others as leading strategic partners			0
SFI4 - Ensure a strong IFRC			0
Strategy for implementation Total	12,354	31,695	-19,341
Grand Total	58,631	37,685	20,946

DREF Operation

Selected Parameters			
Reporting Timeframe	2021/11-2022/1	Operation	MDRVU009
Budget Timeframe	2021/11-2022/1	Budget	APPROVED

INTERIM FINANCIAL REPORT

Prepared on 23/Feb/2022

All figures are in Swiss Francs (CHF)

MDRVU009 - Vanuatu - Volcano Yasur

Operating Timeframe: 18 Nov 2021 to 28 Feb 2022

III. Expenditure by budget category & group

Description	Budget	Expenditure	Variance
Relief items, Construction, Supplies	38,600	4,604	33,995
Shelter - Relief	1,989		1,989
Water, Sanitation & Hygiene	32,984	2,489	30,495
Teaching Materials	3,627		3,627
Other Supplies & Services		2,115	-2,115
Logistics, Transport & Storage	12,560	3,004	9,556
Distribution & Monitoring	7,000	2,619	4,381
Transport & Vehicles Costs	2,560		2,560
Logistics Services	3,000	385	2,615
Personnel	3,093	635	2,458
National Society Staff	1,067	635	431
Volunteers	2,026		2,026
Workshops & Training	0		0
Workshops & Training	0		0
General Expenditure	800	118	682
Office Costs	800	118	682
Other General Expenses	0		0
Operational Provisions		27,024	-27,024
Operational Provisions		27,024	-27,024
Indirect Costs	3,578	2,300	1,278
Programme & Services Support Recover	3,578	2,300	1,278
Grand Total	58,631	37,685	20,946