

OPERATION UPDATE #1

Madagascar, Africa | Tropical Storms and Cyclones

Emergency appeal №: MDRMG018 Emergency appeal launched: 04/02/2022 Operational Strategy published: 25/02/2022	Glide №: ST-2022-000138-MDG
Operation update #1 Date of issue: 18/03/2022	Timeframe covered by this update: From 04/02/2022 to 12/03/2022
Operation timeframe: 12 months (04/02/2022 - 28/02/2023)	Number of people being assisted: 50,000
Funding requirements (CHF): CHF 3 million through the IFRC Emergency Appeal CHF 4 million Federation-wide	DREF amount initially allocated: DREF allocated: CHF 750,000 (DREF Loan – of which CHF 428,609 released on 26/01 - MDRMG018)



Malagasy RC Volunteers carrying out awareness activities on hygiene, health, social protection and preparedness prior to the landfall of TC Emnati in Mananjar, Madagascar (Photo © IFRC).

This Emergency Appeal seeks CHF 4,000,000 and to date stands at 47 per cent funded. Further funding contributions are needed to enable the Malagasy Red Cross Society (MRCS), with the support of the IFRC and other Movement partners, to continue with the preparedness efforts of and provide humanitarian assistance and protection to the 50,000 people affected by the effects of Tropical Storms and Cyclones that have affected Madagascar.

A. SITUATION ANALYSIS

Description of the crisis

Following [alerts](#) by the World Meteorological Organization (WMO) in the last week of January 2022, the devastating Tropical Cyclone (TC) Batsirai made landfall on the eastern coast of Madagascar on 5 February 2022, with wind speeds reportedly hitting an average of 165km/h but peaking at 230km/h (Category 4). This Tropical Cyclone (TC), which is the most powerful in recorded history to impact Madagascar, directly affected four (4) regions namely Atsimo-Atsinanana, Atsinanana, Fitovinany and Vatovavy and, with the districts of Nosy-Varika, Mananjary (Vatovavy Region), Manakara Atsimo and Ikongo (Fitovinany Region) being the most severely affected. Refer to map below.



+CIFRC

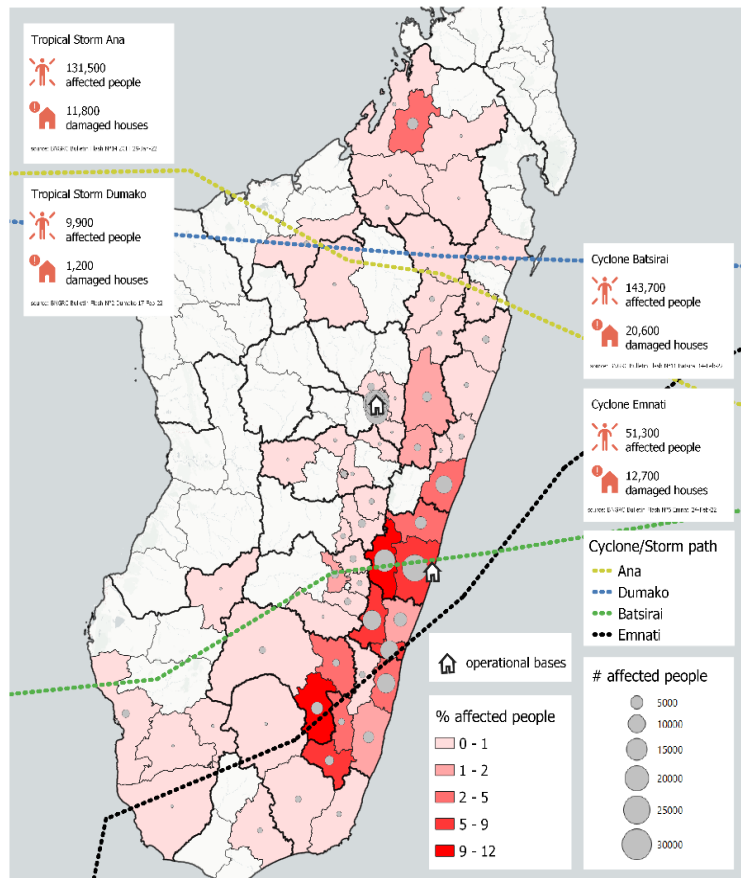
Date: 25 February 2022

Sources: Bureau National de Gestion des Risques et des Catastrophes (BNGRC)



Affected People

Madagascar | Cyclone and Tropical Storms



Notes on methodology: for any administrative division affected by multiple cyclones/storms, only the number of people affected by the single most impactful disaster, i.e. the highest number, is shown. Data on Tropical Storm Dumako is not included. UN OCHA figures might differ. The maps hereby used are in no way the expression of the positions of the International Federation of Red Cross and Red Crescent Societies or National Societies as to the legal status of a territory or its authorities.

0 50 100 150 200 km



According to data from the National Office for Risks and Disaster Management (BNGRC in French acronym) and the Disaster Stakeholders Brainstorming Committee (*Comité de Réflexion des Intervenants en Catastrophe - CRIC*) 143,718 people (30,123 households) have been affected, with 21,922 people displaced (4,921 households) mainly hosted accommodation sites set up by the Government by the impacts of TC Batsirai.

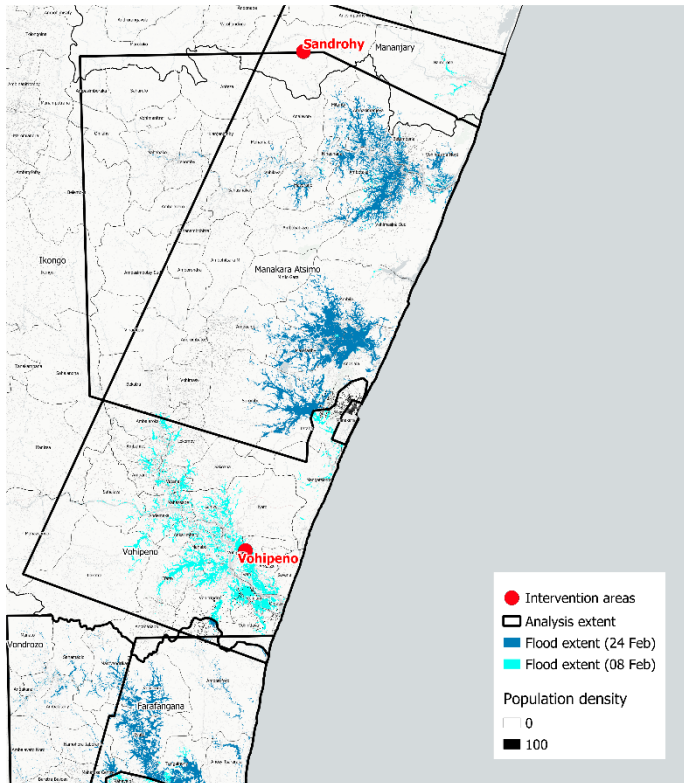
TC Batsirai came only two weeks after communities in the Grand Tana area (Analamanga Region) were being affected by torrential rains and widespread flooding starting from mid-January 2022. This was worsened by Tropical Depression Ana made landfall in between Toamasina and Ile Sainte Marie (Atsinanana Region) in the north-east coast of Madagascar on 22 January 2022.

TC Batsirai was then followed by Tropical Storm Dumako (15 February 2020), and TC Emnati (23 February 2022), which compounded the distuation even further.

BNGRC¹ has reported widespread devastation to livelihoods, flooded public facilities such as schools, health facilities and houses. A total of 218,4000 people (43,600 households) have been affected, with 46,300 houses damaged or destroyed by the combined impacts of TC Batsirai and the other weather systems that have affected Madagascar.



Satellite-Detected Flood Extents Madagascar | Cyclone and Tropical Storms

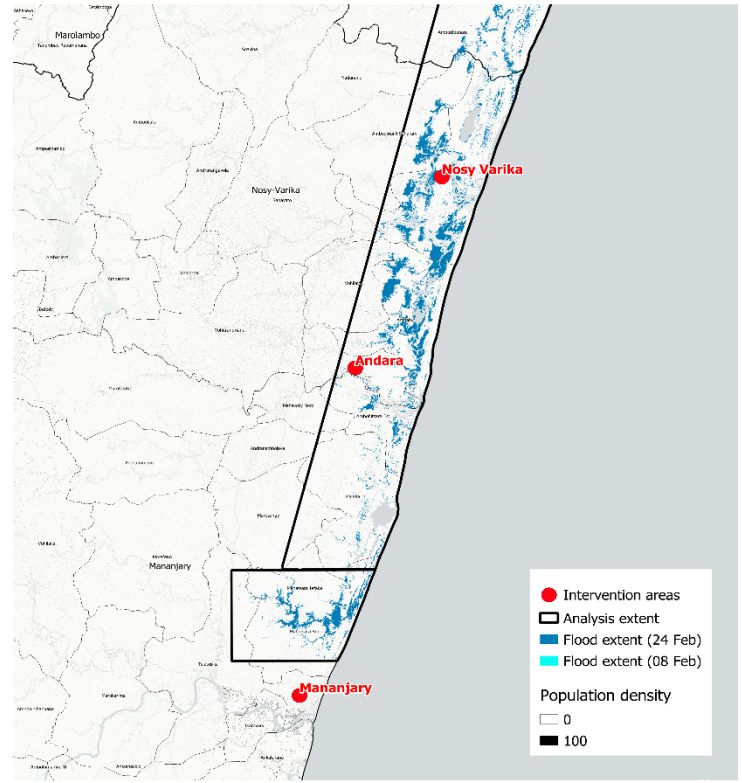


The maps hereby used are in no way the expression of the positions of the International Federation of Red Cross and Red Crescent Societies or National Societies as to the legal status of a territory or its authorities.

0 6 12 18 24 km



Satellite-Detected Flood Extents Madagascar | Cyclone and Tropical Storms



The maps hereby used are in no way the expression of the positions of the International Federation of Red Cross and Red Crescent Societies or National Societies as to the legal status of a territory or its authorities.

0 6 12 18 24 km



Overview of the host National Society and ongoing response

The Malagasy Red Cross (MRCS) is a voluntary humanitarian organization, auxiliary to public authorities in Madagascar. With a network of approximately 10,000 volunteers disseminated in 20 regional branches across the country, with 34 staff members. The regions of Analamanga, Atsinanana and Vatovavy respectively have 2,733, 1,105 and 105 volunteers, of which about 355 volunteers (200 in Analamanga, 105 in Atsinanana and 50 in Vatovavy) have been mobilized to respond to the current operations. Overall, 15 staff of MRCS have been mobilized to coordinate the readiness and response activities in Analamanga and Atsinanana following heavy rains and devastation caused by TC Batsirai and other compounding weather systems.

The MRCS has established good relationships with the Government and is a member of several clusters including "Severe Acute Malnutrition (SAM)", "Food Security and Livelihoods", "WASH and Health", "Nutrition", and the NS co-leads in "the Shelter Cluster" along with BNGRC. MRCS participated in developing the Government's contingency plan and response strategy for the emergency phase of the response, to which the IFRC Emergency Appeal is aligned.

In preparedness TC Batsirai and other weather systems, MRCS deployed her staff to areas anticipated to be affected to support the preparedness and response actions. MRCS has also supported BNGRC with reinforcement and waterproofing of public buildings being used as temporary evacuation centres, as well as management of these sites. Prepositioned stocks were moved to ease access for the eastern regions, and volunteers have provided BNGRC with support in identifying and setting up safe buildings to be utilized as accommodation centres.

On 26 January 2022, a [DREF allocation](#) of CHF 428,609 was released to support MRC respond to the impacts of Tropical Depression Ana and associated heavy rains. On 4 February 2022, following an analysis of meteorological forecast information, [an Emergency Appeal](#) was launched in order to anticipate the humanitarian impacts of the TC Batsirai on the country. The Emergency Appeal is seeking CHF 4 million as part of a Federation Wide funding requirement to support 50,000 people affected by TC Batsirai, and impacts of the other weather systems that preceded or followed. An [Operational Strategy](#) was then published on 25 February 2022, which provides the overarching response plan for the operation against the CHF 4 million funding requirement.



Households receiving shelter kits in Sandrohy distribution site (Photo © MRCS)

Needs analysis

BNGRC along with other partner organizations, including the MRCS and supported by IFRC, have carried out rapid assessments to collect initial data and key information as regard the extent of the damages after the cyclone hit the south-eastern Madagascar. Data has been collected through review of secondary information, community group discussions, key informant interviews, and direct observation. The MRCS has based its needs analysis on a [multisectoral rapid assessments](#), branch reports, field visits, and secondary data, including updates provided by BNGRC, IOM, UNOCHA, and cluster reports. Below can be found a summary of main findings:

Shelter, Settlements and Housing

TC Batsirai and other weather systems have caused widespread damage to both public infrastructure and people's homes. In total, approximately 46,300 houses have been damaged or destroyed. Families whose homes were affected have been staying in makeshift tents or temporary evacuation centres, unable to return to their homes until they have been repaired or rebuilt.

Emergency shelter support with technical assistance to make existing temporary shelters safer is a priority. Affected families that have lost their belongings also need essential household items (EHIs) such as blankets and sleeping mats. Shelter support is also needed, including the provision of materials (fixings, rope, shelter grade tarpaulins, plastic sheeting and tools), and technical assistance to make existing temporary shelters safer and more durable. As many affected families have started repairing or rebuilding their damaged houses with limited or no financial or

technical support, there is an urgent need to support Build Back Safer initiatives as part of pathways to recovery. Salvageable debris has been used for repairs, but there is a lack of proper construction materials, as well as lack of financial means to purchase the materials. The most vulnerable families need support with durable shelter through shelter repair and reconstruction in order to provide full shelter assistance in accordance with Shelter Cluster standards. Advocacy will equally be included in the package for land tenure issues as some families have reported their lands were expropriated due to them having to move following destruction of houses.

As the Red Cross is the official national co-lead for the Shelter Sector in Madagascar alongside the Government, support is required from the IFRC and members to ensure they are able to realise this mandate. Presently there are only four (4) other actors engaging in this sector (Care, Catholic Relief Services (CRS), and IOM), and it is therefore all the more important for the MRCS to prioritise shelter support, and take up their position as the official co-lead.

Basic Needs and Livelihoods

Madagascar is already tackling a parallel and protracted food insecurity crisis, as well as the exacerbating effects of the COVID-19 pandemic and its prolonged lockdowns which affected livelihoods.

Preliminary Market Rapid Assessment results conducted in four (4) districts have indicated a loss of 20% of food stocks by local tradesmen following the devastation of TC Batsirai¹. Food supply will be more challenging in the next two months due to main inter-regional roads having suffered damages, hence delaying food supply. Food assistance through cash must also be considered to help families meet their basic needs,

Heavy rains and subsequent flooding have also inundated crops. Therefore, communities will need livelihoods support (garden farms or other petty trade) and technical support to assist them in restoring their ability to generate income.

Health and Care

Based on the multi-sectoral rapid assessment, and findings from field visits by MRCS, cases of malaria, filariasis and other parasitic diseases are expected to spike in the coming weeks. This is due to the poor living conditions and scarcity of health services in the remote rural areas which have been most affected. The situation is aggravated by reports of standing stagnant water, and low levels of knowledge on the spread of vector and waterborne diseases among the affected communities. Meanwhile, the large number of families remaining in temporary evacuation centres, and congested conditions, increases the risk of communicable disease transmission, including COVID-19. There are limited infection, prevention, and control (IPC) measures in place.

According to an MRCS finding in Sandrohy, Mananjary district (Vatovavy region), 600 cases of fever, 342 waterborne diseases and 459 cases of respiratory diseases had been reported. Meanwhile, while BNGRC and other actors have distributed mosquito nets, these are being used as a means of repairing their homes, for example in place of rope. This illustrates both the need to provide immediate and appropriate shelter support, as well as sensitization on the use of the mosquito nets.

Primary and Secondary health care facilities including Reproductive Maternal Neonatal Child Health services have also been affected; and those that remain functional, are between 5 – 15km from the communities in some areas. This leads the affected population to seek for treatment from traditional healers or a paramedical volunteer in the community for treatment because of the lack of health care workers and medical facilities in the area.

¹ WFP_Post Batsira-Rapid Market Assessment_Feb.2022

Undernutrition and malnutrition are looming, especially due to proximity between the affected areas of the South-Eastern and the [Grand Sud](#) region of Madagascar currently affected by severe food insecurity. Based on this, it is important to engage with other actors involved in MAM and SAM screenings, for referrals to agencies providing clinical health care.

WASH

Based on the multi-sectorial rapid assessment, and findings from field visits by MRCS, water supply services have been impacted in the most affected areas of Manakara Atsimo and Ikongo (Fitovinany Region) and Nosy-Varika, Mananjary (Vatovavy Region) as water systems have been damaged or destroyed. Also, water sources have been contaminated by floods and it is estimated that full restoration of the water systems could take weeks. In some areas, such as Sandrohy, Mananjary district (Vatovavy region), there is an absence of drinking water entirely, as existing hand pumps (drilling) are not working due to the impacts of the TC Batsirai, or lack of previous maintenance. This pushes affected population to use unsafe water from the river and wells. The water collected is not treated and during collection there are no hygiene measures in place around the water points.

Access to safe water needs to be priority, together with the distribution of water containers (buckets and jerry cans) to ensure safe water storage. There is a need for sensitization on water treatment, handling and storage. Hygiene promotion and awareness campaigns as well as hygiene promotion materials are required. Displaced families need basic hygiene kits to maintain good hygiene practices and reduce risk of hygiene-related illnesses.

According to an MRCS findings in the Sandrohy, Mananjary district (Vatovavy region), knowledge of good health practices and how to avoid waterborne diseases is low. In addition the number of latrines per household is also low (two latrines for 10 households). Latrine walls have been destroyed by the cyclones, and pits are exposed, leading to increase instances of open defecation. Sanitation facilities and higher capacity waste management systems are required for the immediate-term period and temporary shelters. Since some areas are already using alternative and natural water sources, education on the importance of household water treatment may be necessary to improve the quality of the drinking water amongst the affected communities and accommodation centers.

Risk Reduction, climate adaptation and Recovery / Environmental Sustainability

The south-eastern region of Madagascar is exposed to tropical cyclones, floods and other weather phenomenon due to its geographical situation. It is therefore important that linkages to regional initiatives including the "Red Ready" and "Tree Planting" initiatives under DRR/ Sustainability sectors must be integrated in the response plans. This will equally be integrated into preparedness initiatives focused on reinforcing capacities of the NS and affected communities.

PGI and CEA

Overcrowding conditions in evacuation centers is compelling families to share spaces, which raises concerns about protection available to the evacuees. Living in precarious large makeshift tents or an old school building, does not allow much privacy or gender segregation which may increase the risk of violence or abuse. During the response phase, MRCS and IFRC will apply minimum standards for PGI in emergency programming and in all sectoral plans to ensure sensitivity to the needs of individuals and groups at-risk, especially people living with disability and elders

Communities need to participate and to voice out through accessible and used channels and structures to be able to measure the quality and quantity of our action, achieve maximum impact, help crisis-affected people recover more quickly. The operation needs to ensure that the MRCS and IFRC remains accountable to communities even during emergencies through the feedback mechanism to allow a two-way communication for better community engagement

Operational risk assessment

Madagascar has one of the highest poverty rates in the world, with 2 million people out of 27 million living below the poverty line as of 2021. In addition to these pre-existing vulnerabilities, the South-West Indian Ocean cyclone season which started 15 of November, has yet only seen the formation of one tropical cyclone (Batsirai) as of 18 February 2022 while there are an average five tropical cyclones per season. This suggests that there is a high likelihood of further weather events affecting the island between then and April 2022 where normally the cyclone season ends.

Following the devastation caused by TC Batsirai and other weather systems, the market access may at times be limited with a scarcity of supplies, resulting in the escalation of prices for necessities. This is limiting the overall purchasing capacity of affected people. Despite the option of providing multi-purpose cash assistance, and support for the costs of labour and local materials, the amount provided may not be sufficient. The impact of price increases may differ between the impacted districts and regions where the cost of transporting materials varies based on the distance from the point of supply. In this regard, the response operation might be negatively impacted by these issues. The MRCS supported by IFRC will closely monitor the situation and the possibility of escalation. This will include the preparation of a cash and voucher (CVA) risk register.

The security situation is overall stable in Madagascar; however, the staff and volunteers need to be aware of the security situation and briefed on how to react to security-related emergencies before deployment to the operational area. For IFRC staff, security responsibilities, including surge support deployed to the area, the existing IFRC country security plan, including contingency plans for medical emergencies, relocation, and critical incident management, will be applicable and updated where necessary. A security field manual has also been developed. Refer to



Households receiving shelter kits in Sandrohy distribution site (Photo © MRCS)

B. OPERATIONAL STRATEGY

Update on the strategy

This operation aims to meet the immediate, early recovery and long-term recovery needs of approximately 50,000 most vulnerable people (8,330 households) in three (3) regions of Madagascar. Due to the extent of damages in the most hard hit areas, the response is focusing its operation on the most affected districts of Grand Tana area (Analamanga Region), Manakara Atsimo and Ikongo (Fitovinany Region), Nosy-Varika, Mananjary (Vatovavy Region)

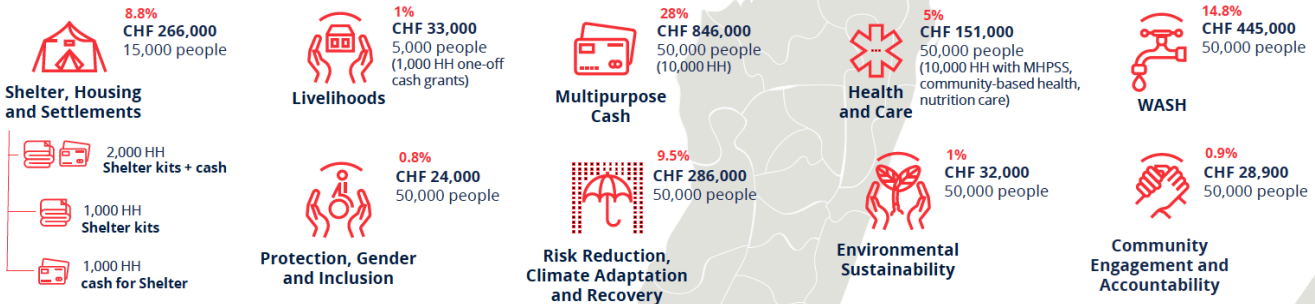
Operational Strategy Key Elements Madagascar | Tropical Storm and Cyclone



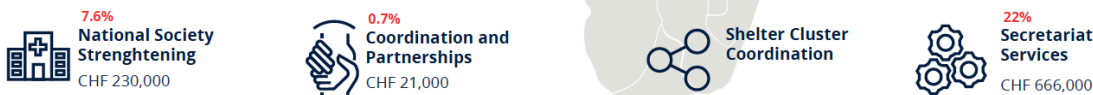
IFRC seeks 4 millions Swiss francs to enable support to the Malagasy Red Cross Society to deliver assistance and support the early recovery of the people affected by the tropical storms, cyclones and rains for 12 months

CHF 3M IFRC Funding
CHF 1M PNS Funding
To assist **50,000 people**

PLANNED OPERATIONS



ENABLING APPROACHES



Note: percentages are calculated over a total of 3M CHF

As part of a coordinated Federation Wide approach, the Emergency MRCS has identified the needs of affected families in the following key sectors: Shelter, Housing and Settlements, Livelihoods and Basic Needs, Health and Care, Water, Sanitation and Hygiene (WASH), Disaster Risk Reduction (DRR), Environmental Sustainability, as well as a need to ensure mainstreaming of Protection, Gender, and Inclusion (PGI), and Community Engagement and Accountability (CEA). Efforts are also being prioritized to strengthen the capacity of the MRCS at HQ and branch level to ensure an effective and quality response across all of these sectors; as well as better prepare them for cyclones in the future.

There are no changes to the accompanying Operational Strategy at the time of this Operations Update. However, based on the financial and in-kind contributions there may need to be revision of Shelter, Housing and Settlements, Livelihoods, and Multi-purpose Cash sectors, with an increase in targets. Additionally, based on the results of Knowledge, Attitudes, Practice' (KAP) surveys conducted to assess the health and WASH status of the affected population, a reprioritization of the Health and Care, and WASH sectors may also be considered. These will be revised in subsequent Operations Updates once confirmed.

While all emergency response components of the strategy are active, preparation of plans for the Livelihoods, National Society Strengthening, Risk Reduction, climate adaptation and Recovery, Environmental Sustainability and PGI are in process, and will be informed by the level of funding received under the Emergency Appeal.

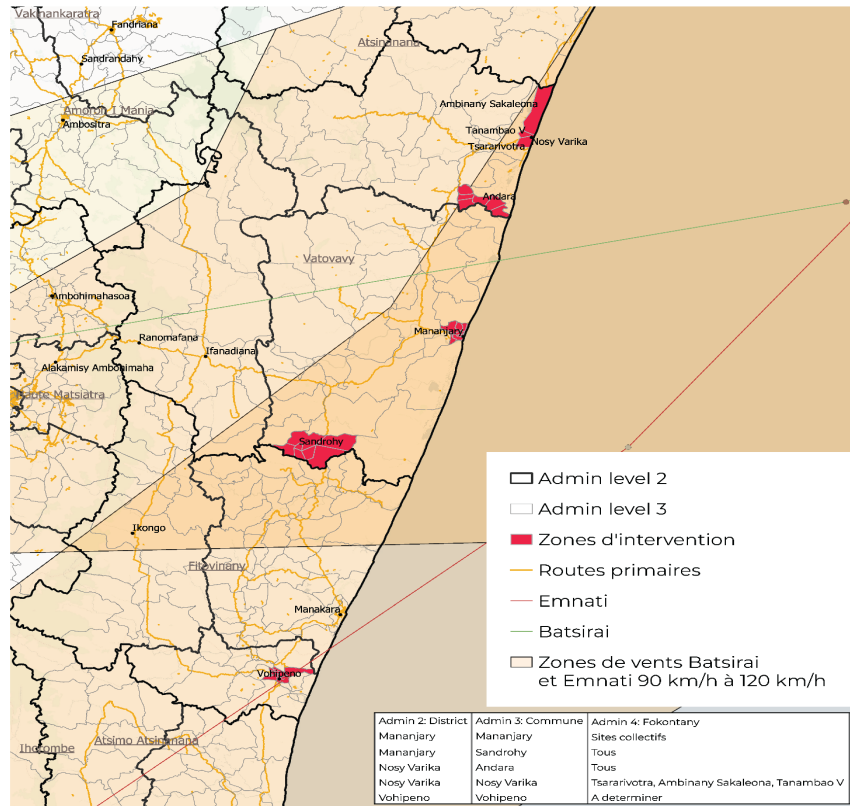


+ C IFRC

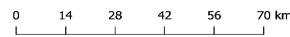
Date: 07 Mars 2022

Zones d'Intervention de la Croix-Rouge

Opération Madagascar Cyclones 2022




Les cartes ci-utilisées ne sont en aucune façon l'expression des positions de la Fédération Internationale des Sociétés de la Croix-Rouge et du Croissant-Rouge ou des Sociétés Nationales quant au statut juridique d'un territoire ou de ses autorités.
Source: IFRC, OpenStreetMap contributors, OCHA, GDACS



C. DETAILED OPERATIONAL REPORT

STRATEGIC SECTORS OF INTERVENTION

 Shelter, Housing and Settlements	Female > 18: 652	Female < 18: 1,088
	Male > 18: 1,058	Male < 18: 1,552

Objective: *Providing short to medium-term shelter and settlement assistance to vulnerable communities, specifically those displaced, in compliance with minimum standards.*

	Indicator	Actual	Target
Key indicators:	# of targeted households provided with direct emergency shelter and settlement assistance	809 HHs	3,000 HHs
	# of targeted households provided with shelter and HHI support through conditional cash or voucher assistance	0	3,000 HHs
	# of families reached with shelter construction technical guidance	809 HHs	4,000 HHS
	# of volunteers/skilled workers/community members trained in shelter and building back better	0	TBD
	# of temporary accommodation sites supported	5	20
	# of sensitization sessions conducted on use of distributed cash for shelter	0	At least 4 sessions

A total of 809 households (4,350 people) have received emergency shelter and settlement assistance, which equates to 27% of the target (3,000). Two distributions were conducted in Sandrohy, Mananjary district (Vatovavy region). Each household received a shelter tool kit comprising, claw hammer, handsaw, hoe, machete, nails, rope, shears, shovel, and tie wire; as well as two tarpaulins. The specification of these items are in accordance with the [IFRC Standard Items Catalogue](#); but with the addition of four (4) items based on the Madagascar context, and agreement with the Shelter Cluster - namely the mutt how, curved needles, measuring tables and additional nails (4cm). These distributions are being supported by in-kind contribution received from French Red Cross – PIROI (3,000 shelter tool kits). Further distributions of emergency shelter and settlement assistance are planned in other communities targeted by the operation over the coming weeks.

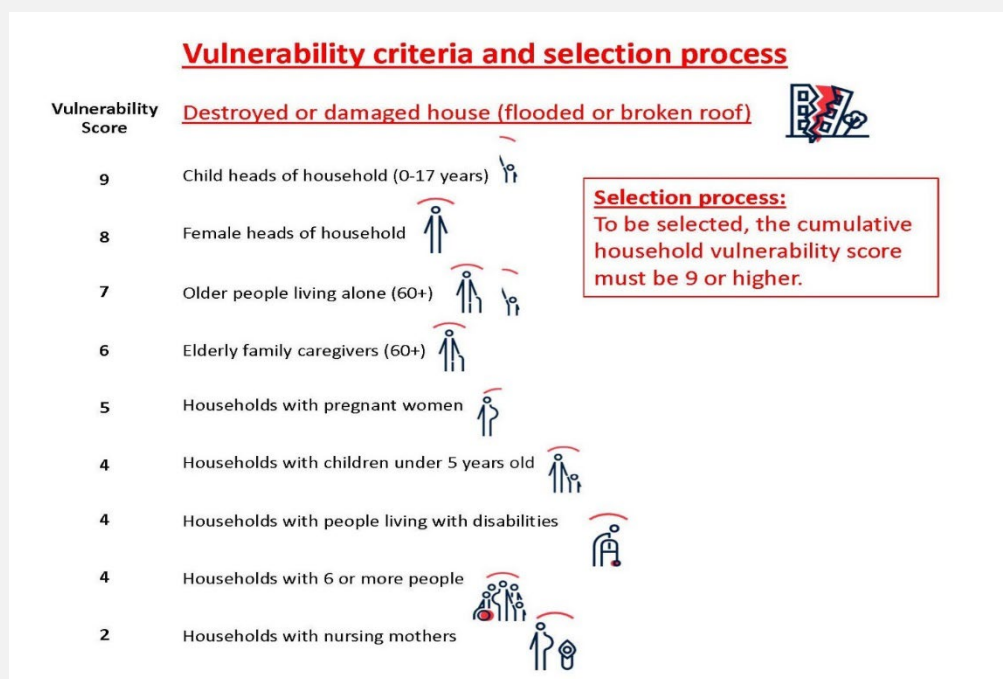
Following these distributions, debriefing and lessons learned workshops were held; and an internal “distribution management guidelines” has been drafted to improve the management of future distributions. A beneficiary satisfaction survey was conducted by 10 volunteers trained on Kobo. A comprehensive report will be shared; and information included in subsequent Operations Updates. A Post distribution monitoring (PDM) questionnaire is

under development to assess the efficiency and impact of the distributions; and is expected to take place from 28 March 2022

Discussions for conditional cash or voucher assistance for shelter construction in the same geographical areas, are under discussion with members of the Cash Working Group and Shelter working Groups. It is proposed that 2,000 households will receive assistance as a complement to the shelter tool kit, and 1,000 households will receive assistance to purchase materials from the market. An amount of US \$38 (or 150,000 Ariary) has been recommended, and endorsed by BNGRC. This is intended to support the targeted population better able to restore and strengthen their safety, wellbeing, and work towards longer-term recovery. Refer to the below strategy.

# HHS	Type of support received		Selection criteria
2,000	Shelter kits	Cash	Households with completely destroyed houses and compounding vulnerabilities highlighted
1,000	Shelter kits		Households with partially destroyed houses which need tools for repairs and have access to locally available materials
1,000		Cash	Households with partially destroyed houses which need repair materials from market


Community involvement in decision-making and construction will be crucial to promote self-help approaches for long-term resilience. (Integration of PASSA and PASSA Youth methods, social media awareness campaigns, demonstration workshops, etc.). Due to the enormous need for shelter and the limited number of partners involved in the shelter sector, a robust selection criteria and vulnerability criteria will need to be applied. Special emphasis will be placed on the inclusion of marginalized and vulnerable populations in poor urban and peri-urban areas. Furthermore, there will be a particular focus on the promotion of land security among informal settlers, which is key for a more equitable shelter response. Refer below for the vulnerability criteria and selection process that has been prepared. To be selected, families will have to have at least one vulnerability to pass the vulnerability score set at a minimum of 9 points, with exception of child heads of households.



To support the MRCS with the implementation of shelter support, the IFRC has deployed a Shelter Coordinator for one month. In addition to providing technical support, and strengthening the capacity of the MRCS Shelter Coordinator, they are also responsible for coordination of Shelter Sector at the national level and at the Mananjary field level where most actors are based. Refer to “Shelter Cluster Coordination” section under “Enabling Approaches”

Development of the training on the use of the shelter kits and Build Back Safer/Better (BBS/B) is ongoing, and technical support to households will be cascaded once these are finalized. It is planned that cyclone strapping/reinforcement, bracing, and tailored designs for people with disabilities will be promoted through the communities. For optimal effectiveness, special consideration will be given to enhancement and engagement of the local workforce, cost-effective and culturally appropriate design solutions (such as an improved traditional houses built mainly with ravinala and hard wood), community involvement in decision-making and construction, local procurement and prefabrication and promotion of self-help approaches for long-term resilience. Other important issues include aspects of building back safer, integration of water, sanitation and hygiene into the operation, and climate-aware settlement planning.

Training of National Disaster Response Team (NDRT) members (4) community volunteers (20) and carpenters (7) is planned from 16 March 2022 in the Sandrohy commune, Mananjary district, with technical support to households to then follow.

 Livelihoods	Female > 18: NA	Female < 18: NA
	Male > 18: NA	Male < 18: NA

Objective: *Restoring household livelihoods by supporting small-scale micro-economic activities*

	Indicator	Actual	Target
Key indicators:	# of households reached with cash for livelihood activities	0	1,000
	Minimum percentage of targeted households who acknowledge usefulness of cash for livelihoods	0	At least 80% or 800 HHs

A Livelihoods plan is being developed, and is expected to include the provision of cash assistance for seeds and other materials to assist affected families develop community gardens. This will be accompanied by training of volunteers and communities on climate sensitive livelihoods and income generation practices. The implementation of these activities will be based on coverage against the Emergency Appeal. This will be reported on in subsequent Operations Updates.



Multi-purpose Cash

Female > 18:
652

Female < 18:
1,088

Male > 18: **1,058**

Male < 18: **1,552**

Objective:	<i>Ensure access to food and other basic needs through provision of multipurpose cash grants to families</i>		
Key indicators:	Indicator	Actual	Target
	# of households reached with cash for basic needs including food	806 HHs	10,000 HHs
	# of volunteers briefed and involved in the cash for food activities	TBD	100
	# of market assessments conducted	4	2
	# of market monitoring conducted	0	12

A total of 809 households (4,350 people) have cash for basic needs (food) assistance, which equates to 8% of the target (10,000). Two distributions were conducted in Sandrohy commune, Mananjary district (Vatovavy region). Each household received a 1st tranche of US \$24 (or 100,000 Ariary). This amount was defined in coordination with BNGRC and other members of the Cash Working Group, based on the cumulated vulnerability of the households as per the agreed targeting guidelines, and is adequate for one month. A 2nd distribution of the same amount will follow. An existing Financial Service Provider (FSP) – *Telma*, which has been validated by IFRC, and used by MRCS in previous operations was used for the distribution. Further distributions of cash assistance are planned in other communities targeted by the operation, as part of a comprehensive package of support (alongside emergency shelter and household assistance)

Preliminary Market Rapid Assessments have been conducted in four (4) districts; and monitoring is planned. Refer to the “Needs Analysis” section for more information. Training of volunteers on cash assistance programming is also planned to strengthen the capacity of MRCS in this sector. This will be reported on in subsequent Operations Updates.

Refer to the “Shelter, Settlements and Housing” sector for more information on this support, including on beneficiary satisfaction surveying, PDMs, and lessons learnt.



*The MRCS President supporting the distribution of multipurpose Cash to the beneficiaries of Andalona
(Photo © MRCS)*



Health & Care

(Mental Health and psychosocial support / Community Health / Medical Services)

Female > 18: **652**

Female < 18: **1,088**

Male > 18: **1,058**

Male < 18: **1,552**

Objective:

The immediate risks to the health of the affected population are reduced and the psychosocial impacts of the emergency are lessened

Key indicators:

Indicator	Actual	Target
Estimated % of target beneficiaries reached with community healthcare support	12.5% or 4,350 people	70% of 35,000 people
# of volunteers trained on CBHFA	0	100
# of volunteers trained on WASH	0	100
# of staff and volunteers trained in quality, targeted PS support skills and interventions	0	50
Estimated # of target beneficiaries reached with PFA within specified time frame from exposure to a crisis event.	TBD	TBD
# of MoH CHWs trained and integrated to RCRC response for coordinated	TBD	TBD
# of volunteers trained and equipped for MAM and SAM detection	0	50

A rapid assessment mission has been conducted in the commune of Sandrohy to determine the status of the health situation in terms of “Knowledge, Attitudes, Practice” among the affected population. The assessment also covered aspects related to the prevention of waterborne disease in the target areas. The priority for the operation will be focused on the establishment of trained and equipped volunteers to sensitize the affected population on the prevention of vector and waterborne diseases. This will be accompanied by distribution of Information, Education and Communication materials, as well EHI such as mosquito nets. As noted, a revision of the strategy for the Health and Care sector may be needed.

A total of 809 households (4,350 people) have received mosquito nets as part of the package of emergency shelter and settlement assistance that were provided, which equates to 12.5% of the target (35,000 people) to receive health services under the operation. This was accompanied by demonstrations on the use of the mosquito nets at the point of distribution. Refer to the “Shelter, Settlements and Housing” sector for more information on this support, including on beneficiary satisfaction surveying, PDMs, and lessons learnt.

One module for the Trainer of Trainer (ToT) on hygiene promotion has been developed, and is ready to use. Training of volunteers on Community Based First Aid (CBHFA) planned, which will be followed by their mobilization to conduct sensitization sessions. This will be reported on in subsequent Operations Updates.



IFRC inspect latrine of a household that has been damaged as a result of TC Batsirai during a rapid assessment in Sandrohy commune (Photo © IFRC)



Community member in Sandrohy commune have been oriented on CEA and two-way feedback mechanisms established in preparation for distributions. (Photo© MRCS)

 Water, Sanitation and Hygiene	Female > 18:	652	Female < 18:	1,088
	Male > 18:	1,058	Male < 18:	1,552
Objective:	<i>The risks of water-related diseases in the communities targeted in the recovery phase are reduced in a sustainable manner</i>			
Key indicators:	Indicator	Actual	Target	
	% of targeted population who have access to clean and safe water	0%	100%	

% of households that report being satisfied with the distribution process	TBD	70%
% of households that had treated their drinking water at the time of PDM using objective tests	TBD	70%
# of households who receive water conservation and storage materials	809 HHs	3,000 HHs
# of volunteers trained in BTIT, preparing them for cholera response	0	100
# of sanitation kits distributed	0	6
# of households receiving mosquito nets	809 HHs	2,000 HHs
# of households reached with soap	0	10,000 HHs
# of families receiving personal hygiene kits	0	10,000 HHs
# of women and girls receiving dignity kits for 3 months	0	7,800
# of health and hygiene promotion sessions conducted	5	32
# of people reached with hygiene promotion activities	4,350	50,000
# of volunteers supporting Hygiene promotion	TBD	100

A rapid assessment mission has been conducted in the commune of Sandrohy to determine the status of the WASH situation in terms of “Knowledge, Attitudes, Practice” among the affected population. This was done in conjunction with the Health KAP (refer to “Health and Care” section). The priority for the operation will be focused on a combination of distribution of water purification tablets (aqua tabs), water storage containers, and hygiene items (soap etc.), as well as hygiene promotion actions to limit the spread of vector and waterborne diseases, including cholera and Malaria. As noted, a revision of the strategy for the WASH sector may be needed.

A total of 809 households (4,350 people) have received buckets and jerry cans as part of the package of emergency shelter and settlement assistance that were provided. The procurement of water potabilization kits is ongoing, and distribution of these will be conducted once received. Refer to the “Shelter, Settlements and Housing” sector for more information on this support, including on beneficiary satisfaction surveying, PDMs, and lessons learnt.

One module for the Trainer of Trainer (ToT) on hygiene promotion has been developed; and is ready to use. Training of volunteers is planned; and will be followed by their mobilization to conduct sensitization sessions, and community campaigns. This will be reported on in subsequent Operations Updates.



Protection, Gender and Inclusion

Female > 18: **NA**

Female < 18: **NA**

Male > 18: **NA**

Male < 18: **NA**

Objective:

Communities identify the needs of the most at risk and particularly disadvantaged and marginalized groups, due to inequality, discrimination and other non-respect of their human rights and address their distinct needs

	Indicator	Actual	Target
Key indicators:	Minimum percentage of targeted population reached with PGI/SGBV awareness	0%	70%
	% of assessments conducted to inform programmatic changes which also considers PGI approaches	0%	100%
	# of staff and volunteers trained in PGI and PSEA	0	30
	# of PGI orientations conducted	0	3

PGI and PSEA training of volunteers and mobilization to conduct orientations and other mainstreaming activities are being planned (assessments, awareness raising and training of staff and volunteers). Discussion is ongoing with the IFRC Regional Officer and Protection cluster partners on possible support to the training of staff and volunteers. This will be reported on in subsequent Operations Updates.



Risk Reduction, climate adaptation and Recovery

Female > 18: **NA**

Female < 18: **NA**

Male > 18: **NA**

Male < 18: **NA**

Objective:

To contribute to the reduction of vulnerabilities in future disasters and to build safer and sustainable communities

	Indicator	Actual	Target
Key indicators:	# of volunteers trained in EWEA systems	0	100
	# of contingency plans on cyclones prepared in collaboration with PIROI	0	TBD
	# of RCRC clubs/branches established in schools/communities	0	6
	# of community resilience groups set up	0	300

A Risk Reduction, Climate adaptation and Recovery plan is being developed, and will to focus on capacity strengthening of branches in the targeted districts to prepare and respond to future cyclones. This will include branch contingency planning and simulation exercises; strengthening of anticipatory/early warning early action mechanism and systems; seasonal disaster preparedness planning and orientation exercise; as well as the training of Branch Disaster Response Teams (BDRTS) / National Disaster Response Teams (NDRTs). This will be accompanied by activities to raise awareness and strengthen capacity on community based disaster risk reduction, climate adaptation and risk in schools, and support to targeted communities with context based climate change adaptation actions. The implementation of these activities will be based on coverage against the Emergency Appeal. This will be reported on in subsequent Operations Updates.



Environmental Sustainability

Female > 18: **NA**

Female < 18: **NA**

Male > 18: **NA**

Male < 18: **NA**

Objective: *To support the restoration and preservation of natural resources and eco-systems for sustainable socio-economic development.*

Key indicators:	Indicator	Actual	Target
	# of trees planted in affected areas	0	5,000
	# of staff and volunteers trained in environmental management	0	100

An Environmental Sustainability plan is being developed, and will focus on the planting and caring of multipurpose tree seedlings (including mangroves and bamboo), as well as orientation of staff, volunteers and communities in the targeted districts on environmental management. This is intended to help restore and preserve the ecosystem, as well as protect communities from the impacts of cyclones by acting as a natural barrier.

Enabling approaches



National Society Strengthening

Female > 18: **NA**

Female < 18: **NA**

Male > 18: **NA**

Male < 18: **NA**

Objective: *Support National Society Development activities including preparedness and response capacity.*

Key indicators:	Indicator	Actual	Target
	Operational Support Services (supply chain, IT, PMER, Finance)	0	4
	National Society preparedness and response capacity	0	3

Set up of a digital volunteer's management system:	0	1
Expansion / Rehabilitation of Malagasy Red Cross Head Quarter office:	0	TBD

A Federation Wide National Society Strengthening Plan will be developed based on the strategic priorities and needs of MRCS, with an emphasis on ensuring the National Society preparedness for future cyclones is enhanced.. This will be done in accordance with the Preparedness for Effective Response approach. The implementation of these activities will be based on coverage against the Emergency Appeal. This will be reported on in subsequent Operations Updates.

To support the operation, an the IFRC Indian Ocean Islands CCD has mobilized its NSD officer, who will deploy to the areas affected alongside a NS counterparts to support the recruitment and orientation of volunteers needed for the operation.



Coordination and Partnerships

Female > 18: **NA**

Female < 18: **NA**

Male > 18: **NA**

Male < 18: **NA**

Objective: *Strengthen Coordination and Partnerships within the Movement and with relevant external actors*

	Indicator	Actual	Target
Key indicators:	# of membership Coordination mechanisms in Madagascar	1	1
	# of existing mechanisms enabling the engagement with external partners	1	TBD
	# of mechanisms enabling influencing and Humanitarian Diplomacy in the country	TBD	TBD

The IFRC Indian Ocean Islands CCD are supporting the MRCS with the coordination of the operation as part of a Federation Wide response. The IFRC Indian Ocean Islands CCD supported by the Africa Regional Office have convened Joint Taskforce Meetings and issued internal Sitreps support information sharing and operational/strategic decision making within the Secretariat. At field level, IFRC is holding standing team meetings to coordinate the operation with the MRCS, and between sectors.

A Partners Call was convened on 1 March 2022 to support the mobilization of resources for the operation. There have been ongoing discussions with ECHO, USAID, TiKA and Embassies with presence in Madagascar on potential support to the operation, with the Emergency Appeal/Operational Strategy shared as a courtesy. From 23 – 28 March 2022, FCDO will be undertaking a field mission to the areas supported by the Emergency Appeal, with preparations underway.

In-country presence include German Red Cross and Luxembourg Red Cross, while there has also been ongoing collaboration with French Red Cross / PIROI. Membership coordination meeting meetings have been held daily initially, and frequency then reduced according to the situation and operational implementation status. French Red Cross / PIROI have been providing logistical and human resource support, as well as contributed in-kind stock, which was already pre-positioned in Madagascar, or in neighbouring islands.

The MRCS is working in collaboration with BNGRC who are coordinating the overall response with support from UNOCHA/UNDAC. This includes completion of the multi-sectorial assessments and development of national response plans. Other humanitarian organizations involved in the response includes, IOM, UNICEF, WFP, and WHO are supporting with food and non-food items, cash assistance, camp management, continuity of health and WASH services. The EU Civil Protection have deployed an Emergency Team 1, while other NGO/INGOs (ADHRA, CARE, CRS, and Save the Children etc. are engaged in services including livelihoods, and protection.



Shelter Cluster Coordination

Female < 18: **NA**

Female > 18: **NA**

Male < 18: **NA**

Male > 18: **NA**

Objective:	<i>The humanitarian shelter and settlements sector are well coordinated, supporting a comprehensive, quality, coherent, and consistent shelter and settlements response</i>		
Key indicators:	Indicator	Actual	Target
	Shelter cluster is coordinated by IFRC with cluster coordinator deployed	1	1

An IFRC Shelter Coordinator rapid response personnel has been deployed (supported by Swiss Red Cross) for one month to cover both shelter cluster coordination and technical shelter support to MRCS. They are being supported by an IFRC IM rapid response personnel (supported by British Red Cross). Alerts have been issued for 2nd rotations for a Shelter Coordinator (2 months), and Shelter Cluster Coordination (1 month); and interested member National Societies are encouraged to put forward suitable applicants.

A weekly Shelter Cluster meeting is organized at both HQ and field level (Mananjary); and the first Technical Working Group (TWG) has also started.

The IFRC shelter coordinator has drafted the shelter strategy, and this has been pre-approved by MRCS. It has now been disseminated to partners, and other co-leads under this sector.

A minimum shelter kit has been defined by shelter sector partners to ensure standardization of items. There has also been coordination with the Cash Working Group to define needs and standardize cash transfer amounts, with discussions ongoing.

A new shelter coordination hub has been opened in Manakara to cover the Atsimo-Atsinanana and Fitovinany region. Until now only the Mananjary Hub which covers Vatovavy region was operating,



Secretariat Services

Female > 18: **NA**

Female < 18: **NA**

Male > 18: **NA**

Male < 18: **NA**

Objective:	<i>Strengthen Secretariat services to the operation to ensure MRCS provides relevant, timely, accountable services to those affected.</i>		
Key indicators:	Indicator	Actual	Target
	% of Human Resources provided to the operation	In progress	100%

% of adequate resources provided on crosscutting themes/support services namely Logistics, Security, Finance, PMER	100%	100%
% of staff benefiting Security orientation and briefing upon arrival in Madagascar	100%	100%

Number of rapid response personnel have been deployed as part of a Federation Wide scale up of support to the operation. This has comprised mobilization of staff from the extended IFRC Africa Regional Office – Disasters, Climate and Crises (DCC) unit, from other CCDs, African National Societies, as well as member National Societies.

Please below for breakdown of the profiles deployed:

Profile	Deploying organization	Status
Operations Coordinator (1 st rotation)	IFRC CCD – Dakar	End of mission
Operations Manager (1 st rotation)	IFRC Regional Officer	End of mission
Communications Manager	IFRC Regional Office	End of mission
Operations Coordinator (2 nd rotation)	IFRC Regional Office	Deployed
Operations Manager (2 nd rotation)	French Red Cross/PIROI	Deployed
Shelter Coordinator (1 st rotation)	Swiss Red Cross	Deployed
Public Health Coordinator	Guinea Red Cross	Deployed
CVA / Relief Coordinator	French Red Cross/PIROI	Deployed
Logistics Coordinator	French Red Cross/PIROI	Deployed
Logistics Officer (1 st rotation)	IFRC CCD – Dakar	Deployed
IM Analyst / Shelter IM	British Red Cross	Deployed
SIMS Coordinator	Netherlands Red Cross	Deployed
PMER Coordinator	Burundi Red Cross	Deployed
Finance/Admin Coordinator	IFRC CCD – Bangui	Deployed
Operations Manager (3 rd rotation)	IFRC CCD – Niamey	Confirmed
CVA / Relief Coordinator (2 nd rotation)	TBC	Under discussion
Logistics Officer (2 nd rotation)	TBC	Under discussion

Please see below business-critical surge positions where surge alerts have been issued, but need to be filled:

Profile	Deploying organization	Status
Shelter Coordinator (2 nd rotation)	TBC (2 months)	Alert sent
Shelter Cluster Coordination	TBC (3 months)	Alert sent

Recruitment of longer-term positions are in progress, this includes an IFRC Operations Manager (six months), NS Operations Manager, NS Finance/Admin Officer, NS CEA/PMER Officer, NS Shelter Cluster Coordinator (NS), and NS Logistics Officer. National Disaster Response Teams (NDRT) in CVA, Public Health and Shelter are also being mobilized to support the operation for six months.

A HR and Surge Plan has been prepared, alongside an organogram, with working sessions planned to review and finalize these, along with which ensuring consensus on roles, responsibilities, and counterparts between IFRC and the NS. This is intended to facilitate coordination, micro planning, and effective decision making for the operation.

The IFRC Indian Ocean Islands CCD are in compliance with the IFRC Minimum Security Regulations (MSR), and all deploying staff and surge personnel are provided with security briefing and supporting information. A Field

Security Manual has been prepared; and is currently being finalized with the Field Operations Team. This will act as a complement to the MSR.



Community Engagement and Accountability

Female > 18: **NA**

Female < 18: **NA**

Male > 18: **NA**

Male < 18: **NA**

Objective:

Adopt standardized approaches for Community Engagement and Accountability, including the collection of community feedback to understand their perspectives, as well as to promote their participation in decision making, and implementation of the response

	Indicator	Actual	Target
Key indicators:	% of assessments conducted to inform programmatic changes which also considers CEA approaches	In progress	100%
	# of staff and volunteers trained on CEA	0	30
	# of CEA sessions conducted on the operation	In progress	3
	# of feedback mechanisms setup in districts	In progress	6
	% of feedbacks received through mechanisms set up which are addressed	In progress	at least 80%

A standardized CEA approach is being integrated into this operation, to ensure representation and involvement of communities is considered throughout the response. CEA interventions are in progress in communes and districts in the Anamalanga, Fitovinany, Vatovavy regions which are targeted by this operation.

A two-way communication channel will be identified and established to engage with different community leaders, representatives, and groups to help with the planning, implementation and monitoring of response activities. Information will be regularly shared with the affected population with the affected population on the assistance and services being provided, selection criteria, distribution processes, update on any delays or progress in activities. This includes the collection of community feedback to understand their perspectives, as well as to promote their participation in decision making, and implementation of the response. This is intended to allow community members can express themselves as the operation takes place in terms of suggestions, concerns, and questions. The feedback mechanism ensures communities have a safe space to make sensitive or serious complaints, which will be handled confidentially and carefully and linked with clear referral pathways

Existing community structures are being used, and special committees are being set up to update communities on what actions need to be taken to address their feedback. Based on assessment, feedback tools will be adapted to the context so that feedback can be collected, analysed, and responded too. FAQs will be developed based on feedback trends, updated regularly and shared with volunteers to help them respond to community questions and concerns. The community feedback will be shared on different internal and external coordination meetings and with partners directly linked to the response to ensure decision-making is guided by the evolving situation and priority needs of the communities.

A CEA assessment has been completed in Mananjary district, Vatovavy region. Three (3) communes which are targeted for the first distribution of emergency assistance, have been orientated on CEA, and two-way feedback mechanisms have been established. Results from the feedback mechanisms and changes made to the operation will be communicated in future Operations Updates. The intention is to extend this approach to communes in other targeted districts, as part of the planning process for the start-up of the operation in these areas. CEA training of volunteers and mobilization is planned.

A CEA/PMER officer is being recruited to strengthen the NS capacity in this area. The Indian Ocean Islands CCD NSD Officer is being mobilized to provide additional CEA support. Remote CEA technical support is also available and is being provided from the IFRC Regional Office.

D. FUNDING

Click [here](#) for the interim financial report.

1. Contact information

For further information, specifically related to this operation please contact:

In the Malagasy Red Cross Society

- **Secretary General:** Andoniaina Ratsimamanga, andoniaina.ratsimamanga@crmada.org, +261 32 04 194 02
- **Operational coordination:** Herizo VOLOLONTSALAMA, Disaster Manager, coordo_grc@crmada.org, +2613454 463 44

In the IFRC Country Cluster Delegation

- **Maria Martinez**, Head of Country Cluster Office, Antananarivo; maria.martinez@ifrc.org, +261 32 11326 02
- **Denis Bariyanga**, Operations Coordinator, Antananarivo; denis.bariyanga@ifrc.org, +261 32 11 326 15

In the IFRC Regional Office for Africa, Nairobi

- **Disaster and Crises Prevention, Response & Recovery:** Adesh Tripathee, Head of DCC, adesh.tripathee@ifrc.org, +254 731 067 489
- **Resource Mobilization and Pledges Support:** Louise Daintrey; Head of Partnerships and Resource Development; Email: Louise.DAINTREY@ifrc.org;
- **In-Kind donations and Mobilization table support:** Rishi Ramrakha, Head of Africa Regional Logistics Unit, Email: ri-shi.ramrakha@ifrc.org; phone: +254 733 888 022

Reference documents



Click here for:

- [Previous Appeals and updates](#)

2. How we work

All IFRC assistance seeks to adhere the **Code of Conduct** for the International Red Cross and Red Crescent Movement and Non-Governmental Organizations (NGO's) in Disaster Relief, the **Humanitarian Charter and Minimum Standards in Humanitarian Response (Sphere)** in delivering assistance to the most vulnerable, to **Principles of Humanitarian Action** and **IFRC policies and procedures**. The IFRC's vision is to inspire, encourage, facilitate and promote at all times all forms of humanitarian activities by National Societies, with a view to preventing and alleviating human suffering, and thereby contributing to the maintenance and promotion of human dignity and peace in the world.

Emergency Appeal

INTERIM FINANCIAL REPORT

Selected Parameters			
Reporting Timeframe	2022/01-2022/02	Operation	MDRMG018
Budget Timeframe	2022/1-2023/02	Budget	APPROVED

Prepared on 16 Mar 2022

All figures are in Swiss Francs (CHF)

MDRMG018 - Madagascar - Heavy Rains and Tropical Storm

Operating Timeframe: 26 Jan 2022 to 28 Feb 2023; appeal launch date: 04 Feb 2022

I. Emergency Appeal Funding Requirements

Thematic Area Code	Requirements CHF
AOF1 - Disaster risk reduction	148,000
AOF2 - Shelter	266,000
AOF3 - Livelihoods and basic needs	879,000
AOF4 - Health	151,000
AOF5 - Water, sanitation and hygiene	445,000
AOF6 - Protection, Gender & Inclusion	24,000
AOF7 - Migration	0
SFI1 - Strengthen National Societies	400,000
SFI2 - Effective international disaster management	0
SFI3 - Influence others as leading strategic partners	21,000
SFI4 - Ensure a strong IFRC	666,000
Total Funding Requirements	3,000,000
Donor Response* as per 16 Mar 2022	698,055
Appeal Coverage	23.27%

II. IFRC Operating Budget Implementation

Thematic Area Code	Budget	Expenditure	Variance
AOF1 - Disaster risk reduction	0	3,853	-3,853
AOF2 - Shelter	24,197	0	24,197
AOF3 - Livelihoods and basic needs	200,838	243,477	-42,639
AOF4 - Health	27,690	622	27,068
AOF5 - Water, sanitation and hygiene	85,626	0	85,626
AOF6 - Protection, Gender & Inclusion	0	0	0
AOF7 - Migration	0	0	0
SFI1 - Strengthen National Societies	55,007	0	55,007
SFI2 - Effective international disaster management	33,335	2,623	30,711
SFI3 - Influence others as leading strategic partners	0	0	0
SFI4 - Ensure a strong IFRC	1,917	5,403	-3,486
Grand Total	428,609	255,978	172,632

III. Operating Movement & Closing Balance per 2022/02

Opening Balance	0
Income (includes outstanding DREF Loan per IV.)	1,240,520
Expenditure	-255,978
Closing Balance	984,542
Deferred Income	0
Funds Available	984,542

IV. DREF Loan

* not included in Donor Response	Loan :	750,000	Reimbursed :	0	Outstanding :	750,000
----------------------------------	--------	---------	--------------	---	----------------------	---------

Emergency Appeal

INTERIM FINANCIAL REPORT

Selected Parameters			
Reporting Timeframe	2022/01-2022/02	Operation	MDRMG018
Budget Timeframe	2022/1-2023/02	Budget	APPROVED

Prepared on 16 Mar 2022

All figures are in Swiss Francs (CHF)

MDRMG018 - Madagascar - Heavy Rains and Tropical Storm

Operating Timeframe: 26 Jan 2022 to 28 Feb 2023; appeal launch date: 04 Feb 2022

V. Contributions by Donor and Other Income

Opening Balance							0
Income Type	Cash	InKind Goods	InKind Personnel	Other Income	TOTAL	Deferred Income	
China Red Cross, Hong Kong branch	23,714				23,714		
DREF Allocations				750,000	750,000		
European Commission - DG ECHO	104,341				104,341		
Spanish Government	262,444				262,444		
Swiss Red Cross	100,000				100,000		
United States - Private Donors	21				21		
Total Contributions and Other Income	490,520	0	0	750,000	1,240,520	0	
Total Income and Deferred Income					1,240,520	0	