

www.ifrc.org
Saving lives,
changing minds.

Operation Update Report no. 1

Chad: Population Movement from Cameroon

 International Federation
of Red Cross and Red Crescent Societies

DREF n° MDRTD020	GLIDE n° CE-2021-000201-TCD
Operation update n° 1; date of issue: 15 April 2022	Timeframe covered by this update: 16 December 2021 to 14 April 2022
Operation start date: 16 December 2021	Operation timeframe: 06 months and end date 30 June 2022 (2 months extension)
Funding requirements (CHF): 0	DREF amount initially allocated: CHF 263,377
Red Cross Red Crescent Movement partners currently actively involved in the operation: Chad Red Cross has the largest voluntary relief network in Chad, with more than 20,000 members, over 54,000 volunteers and over 100 paid technical staff at national level. For this operation, 100 volunteers will be deployed from the provincial branches of Chari Baguirmi and N'djamena central.	
Other partner organizations actively involved in the operation: International Federation of Red Cross and Red Crescent Societies (IFRC), International Committee of the Red Cross (ICRC) and Luxembourg Red Cross.	

Summary of major revisions made to emergency plan of action:

This update aims to inform on activities implemented and extend for 2 months the operation due to operational delay linked to multiple factors.

After the assessment, the coordination challenge in the assistance and the situation of refugees out of the official camps have delayed the implementation of cash and WASH activities as the National Society (NS) was waiting for the ongoing assessment by the Government agency to know where the assistance should go and to be in agreement on the amount to be allocated in terms of cash. An online modification of the budget is also done to manage the FSP fees which was finally more than initially budgeted. Savings on some activities already conducted will be used to fill the gap. The total budget and allocation remain the same.

A. Situation Analysis

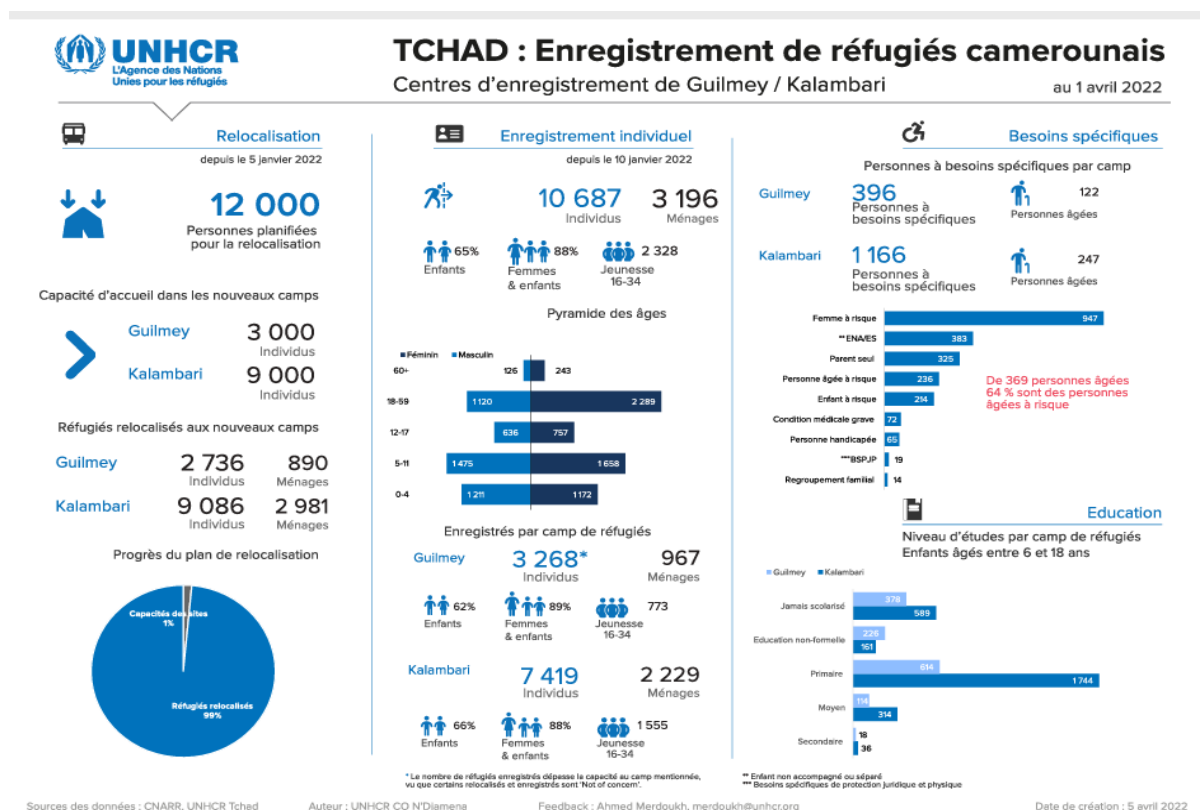
Description of the disaster

Since December 5, intercommunity clashes broke out in the Far North region of Cameroon, displacing thousands of people internally and forcing thousands to flee to neighbouring Chad. On 8 December, fighting broke out in the Cameroonian town of Kousseri, a commercial centre with some 200,000 inhabitants. According to the National Commission for the Reception and Reintegration of Refugees and Returnees (CNARR) and the UNHCR, 82,637 Cameroonians had found refuge in Chadian territory on 12 December 2021. Of these, **45,637 are reported in the urban areas of N'Djamena** while **37,000 in rural areas**. Most of these people fled the town of Kousseri to N'djamena, the capital of Chad, located a few kilometers across the Chari and Logone rivers, which serve as natural boundaries between Chad and Cameroon. At least 22 people were killed and 30 seriously wounded during several days of continuous fighting in Cameroon with at least 15,000 people internally displaced in other localities in the departments of Logone et Chari, Diamaré and Mayo-Danay in Cameroon.

Clashes broke out in the border village of Ouloumsa following a dispute between cattle rearers, fishermen and farmers over dwindling water resources. Violence then spread to neighbouring villages. In total, 10 villages were burnt down. Eighty percent (80%) of the new arrivals are women – many of whom are pregnant – and children (ongoing registration of displaced persons under the aegis of UNHCR and CNARR). They found refuge in N'djamena and in villages along the Chadian side of the Logone River.

Security forces were dispatched to the Far-North region of Cameroon, and to the crisis zone for the Chadian side, but the situation remains volatile. UNHCR was forced to suspend its operations in the affected areas.

Chadian authorities reaffirmed their hospitality towards the new arrivals. UNHCR and other UN agencies and humanitarian partners, including the Red Cross of Chad (RCC) and its Movement partners, provided emergency assistance to Cameroonian refugees. The injured were admitted to two hospitals in N'Djamena. To urgently respond to this dramatic situation, RCC requested for a DREF allocation¹ as well as Cameroon Red Cross for a coordinated transborder response. In Chad, one month after their arrival, the refugees grouped in spontaneous settlement have been moved to two camps UNHCR has set up and to two other spontaneous settlements. Actually, the government has asked all the refugees from the spontaneous settlements to be relocated in the 2 official camps. This operation is ongoing, but most of the assistance is concentrated in the official camps as per request by Government. On the 100,000 refugees counted at the early stage of the crisis, some has returned in Cameroon, others are still in the rural areas along Chad borders but making the road Chad-Cameroon-Chad in the morning to work in the farms; and most of them are still in the camps and are in urgent needs of humanitarian assistance. As of 1st April, the situation of registered refugees in the camps is captured in the following graph



Summary of previous and current CRC interventions

Overview of the Host National Society's action

See more details of the early actions of the RCC here in the [DREF EPOA](#).

In response to this new asylum seekers' influx from Cameroon, RCC launched a DREF operation. Thanks to the NS' previous experience in the serial Sudanese Refugee Operations (from 2003 up to recent in Kouchaguine Moura, Eastern Chad), alongside the Nigerian refugees programme with UNHCR (in the Dar Es Salam Camp, Lake province) and the repeated emergency assistance to the Central African refugees in the south, the RCC was successful again in implementing and monitoring additional humanitarian actions in support to this new refugees' influx from Cameroon. From the operation launching on 16 December 2021 to date, the RCC carried out the following actions:

- Printing and dissemination of posters in public gathering places, in both camps
- Design, printing and distribution of leaflets to the refugees at households
- Production of ICT image boxes for dissemination and awareness raising in the refugee communities

¹ DREF allocated funds based on the [approved EPOA](#) to respond through cash and material for basic needs of 10,000 refugees in Chad both in rural and urban areas.

- Starting the sessions for awareness raising on hygiene and sanitation in the camps and surrounding households
- Procurement of hygiene kits planned for distribution
- Procurement and Distribution of volunteer protection kits
- Hand washing kits Purchase and planned for distribution in the refugee camps
- Training session on water purification methods for 120 volunteers
- Training session and upgrading of RCC volunteers on data collection with smartphones
- RCC volunteers provided support to UNHCR for electronic registration of all refugee households in Guilmeiy and Kalambari camps
- Starting the construction of latrines at the community school in Guilmeiy camp for the refugees and the host population pupils
- Participation in coordination meetings with other humanitarian aid-workers who are involved in the Cameroonian refugee operation;
- A total of 75 RCC staff and volunteers trained in Community engagement and accountability (CEA) in both camps; with adequate community strategy and mechanisms set up for feedback information/complaints management
- Cash assistance provision to the refugees
- Provision of WFP food by RCC volunteers to the refugees
- Telephone calls for restoring family links (RFL) in close coordination with ICRC
- Market monitoring
- Secondary data collection from other organizations
- Weekly update meetings with IFRC Bangui cluster team and the DREF focal point in Yaoundé.

Overview of the Red Cross and Red Crescent Movement's action in the country

(See initial details in the [EPoA](#)).

Overview of other actors' actions in the country

For the time being, the following humanitarian agencies are supporting the government of Chad in providing assistance to displaced people both in N'djamena and in affected rural areas

Agency	Actions
Government of Chad	<ul style="list-style-type: none"> - Through the National Commission for the Reception and Reintegration of Refugees and Returnees (CNARR), the government ensures the coordination of all humanitarian actors - Ensures the security of all actors' activities - Conducted a joint rapid assessment with UNHCR at the beginning of the crisis - The Ministry of Public Health and National Solidarity (MSPSN) provided non-food items to be distributed by RCC volunteers to 2,905 people or 581 households.
OCHA	Coordination of humanitarian actions and advocacy for assistance to these new refugees that Chad is hosting
WFP	Facilitation by RCC volunteers of the distribution of energy biscuits provided by WFP, to 15,101 people (2,279 households)
UNHCR	UNHCR continues to provide funding and technical/advisory support to the team coordinating operational activities to assist refugees and displaced persons
Agency for Economic and Social Development (ADES)	Support in the health and hot meals sector in affected rural and urban areas
MSF Holland	Support in the Health sector in affected rural areas
Alima/Alerte Santé Consortium	Support in the Health sector in affected urban areas
IRC	Implementing health activities in Kalambari camp
IAS (International Aid Service)	Promoting hygiene and providing waste disposal bins in both refugee camps
Inter SOS	Psychosocial support to the refugees in Guilmeiy camp
Oxfam	Construction of latrines in both refugee camps
JRS	Education activities
ALIMA	Implementing health activities in Guilmeiy
Alerte Santé	Implementing health activities in Guilmeiy
Médécin d'Afrique	Psychosocial support to the refugees in Kalambari camp
CERF	CERF gives \$6 million ² to Chad for emergency response to Cameroonian refugee influx

² <https://www.humanitarianresponse.info/en/operations/chad/document/tchad-le-cerf-accorde-6-millions-de-dollars-au-tchad-pour-la-r%C3%A9ponse>

Coordination

From the beginning of the crisis, UNHCR and its operational partners set up a coordination mechanism with daily and weekly online and face-to-face meetings (as needed). This coordination mechanism triggered the first response to the emergency through:

- mobilization of the humanitarian community and the pooling of resources
- planning of targeted sectoral actions
- identification of new sites for the relocation of refugees. Several tasks were carried out, including the design of overall plans, site planning for relocating the refugees, communication and awareness-raising
- registration procedures for the asylum seekers
- concrete proposals on the financing mechanisms are planned

A delegation from the RCC, led by its President Sessoussi Ahmat Khalla, visited the Guilmei site on Monday 17 January 2022. The delegation, composed of the Secretary General, the National Programme Coordinator, and other NS technical staff members and a representative of the IFRC, visited the different operational sectors to enquire about the progress of activities and the challenges faced by the RCC volunteers and other partners. The visit of the NS President and his delegation coincided with the distribution of non-food relief and essential household items offered by UNHCR and its partners to refugees. Several other partners of the Red Cross and Red Crescent Movement, including the Delegate in charge of International cooperation at the Turkish Red Crescent took turns in field visits to the Cameroonian refugees' sites and in the two camps recently set up by UNHCR and CNARR.

Previously, before the DREF agreement was signed, then in parallel with the activities approved in the DREF, NS conducted actions in coordination with other partners. Mainly in two operational sectors as follow:

Distribution of food & NFIs

The work of the volunteers in the distribution sector began immediately after the influx of Cameroonian refugees into Chad in December 2021. This activity was based on the various agreements between the RCC and its state and non-state partners, notably the Ministry of Public Health and National Solidarity, the UNHCR and the WFP. Thanks to the implementation of these agreements, the first distributions of energy cookies and foodstuffs took place in December 2021, at the various sites of spontaneous arrival of refugees in the urban area of N'Djamena and in the rural area of Koundoul, in the neighbouring province of Chari Baguirmi. For these various interventions, the RCC called on volunteers from its departmental committees.

The main objective was to help improve food security situation of the affected populations by distributing biscuits, hot meals and emergency food rations. In this preliminary phase of the operation, four tons of energy biscuits were received and distributed by RCC volunteers to Cameroonian refugees in the Ngeuli and Farcha Milezi sites. The ration consisted of 3 packs of energy biscuits per person and was planned to cover 3 days of food needs per beneficiary. A total of 19,374 people, representing 3,389 households, were served during the operation.

During the preliminary phase, RCC volunteers also distributed food to the Cameroonian refugees from 14 to 21 December 2021. The food was provided and transported to the sites by the WFP, enabling each refugee to receive a 30-day ration, with a daily basket consisting of 250g of cereals, 50g of lentils and 15g of oil. At the end of the operation, a total of 31,825 people were served, i.e., 6,604 families in the sites of Ngeuli, Farcha, extended to the sites of Ndouh and Sieba 2.

Shelter construction

In Guilmei camp

- ✓ Community sheds: 20 community sheds were built by volunteers with UNHCR materials.
- ✓ Family shelters: 255 already built; and 345 that could not be built due to lack of space. These 345 pending shelters will be built as soon as the land issue is resolved by UNHCR, CNARR and local authorities.
- ✓ Registration centre: 01 site with 2 sheds and latrines,
- ✓ Refugee Housing Unit (RHU): 05 units fully set up, including 01 at the health centre in the refugee camp;
- ✓ Amusement centre for refugees' children: 01 site built with 2 sheds.

In Kalambari camp

On 30 January 2021, the RCC team in charge of construction activities went down to Kalambari camp and started with the cleaning, the weeding and the installation of the site. A total of 40 sheds were built with a dimension of 15mx6 partitioned into ten small sheds with a capacity of 10 households each. The team worked on the construction of family shelters, each shelter at a size of (5m x 3.5 m) for a family of 5 people maximum in a 10m2 plot. The shelters are made of rafter and joist frames, the rafter posts are saddled with cement and gravel, the roofs are made of sheet metal and the walls are made of tarpaulin.

Needs analysis, selection of beneficiaries, scenario planning and risk assessment

From the very beginning of the current crisis, RCC's national headquarters activated its protection monitoring mechanism, in close collaboration with national and local authorities. As an auxiliary to public authorities and a member of the national crisis management committee, Chad Red Cross is an integral part of the government's disaster response mechanism. As such, it organized a field assessment mission on 10 and 11 December 2021. The mission reported that no formal registration has yet been made of the new influx of Cameroonian refugees. However, it reported estimated data from the UN Refugee Agency, which shows **82,637 displaced Cameroonians**, including **45,637 in the urban areas of N'Djamena** and **37,000 in rural areas**. See details of the initial need analysis in [the EPoA](#).

Based on the NS collected information and the assessment reports, this update confirmed the need in the sectors highlighted in the [EPoA](#) that was provided by multiple secondary data from other partners. Below is the summary of the needs updated as of March.

Geographical presence of refugees and general situation

The RCC was able to visit all the sites between 12 and 20 February 2022. The situation of refugee was at follows:

- 2 official camps managed by UNHCR and declared by government located near the host villages.
- Identified infiltrations of communities into the camps.
- Work of distinction at the expense of the CNAAR
- 2 undeveloped sites - Malfana and Djazira - in the Department of Mandelia located about 50km from the capital N'Djamena.
- The number of refugees initially assessed in the EPoA as integrated into host communities in urban areas are currently not significant. Very few remained in the host families, they have returned to the camps according to the government's plan.
- The needs of WASH, shelter and health are covered for the populations in the camps while those of the sites remain almost intact, the number of latrines is very few, and sensitization needed to be reinforced. Needs on latrines is becoming higher due to movement of refugees from the unsettled areas to the official camps, mostly in Guilmeiy.
- Access to the sites is relatively simple but some incidents have been reported (cf. security section below).
- Targeting must be reoriented based on the refugees' presence concentrated in rural areas, in the camps. And now, moved in official camps by the government.

Currently, the refugees who were in the spontaneous camps have been relocated to Kalambari camp. Kalambari camp hosts 9,086 people or 2,981 households and Guilmeiy camp accommodates 2,736 people or 890 households (UNHCR figures as of 1st April 2022). There are households housed in a community shed in Guilmeiy camp that are not included in the global number. The situation has been updated by UNHCR in the reports published on 5th April³ as below:

Populations per category in each refugee camp	Estimated number of concerned persons
Total relocations planned by UNHCR on 5 January 2022	12,000 persons
Population host capacities of both new camps	Guilmeiy: 3,000 persons
	Kalambari: 9,000 persons
Effectively relocated refugees (as to-date) in both camps	Guilmeiy: 2,736 persons (890 HH)
	Kalambari: 9,086 persons (2 981 HH)
Individual registrations as of 10 January 2022	10 687 persons (3,196 ménages) of which: Children: 65% ; Women & children: 88% Youth (16-34 years): 2,328 persons
Disaggregated number of people in Guilmeiy Camp	3 268 persons (967 HH) of which: Children: 62% ; Women & children: 89% Youth (16-34 years): 773 persons
Disaggregated number of people in Kalambari Camp	7,419 persons (2,229 HH) of which: Children: 66%; Women & children: 88% Youth (16-34 years): 1,555 persons

³ Data as of 1st April. Published on 5th. Link to the summary graphic [here](#).

Refugee population by age group and persons with specific needs	
Children (0-18 years)	3,322 boys & 3587 girls
Children (5<18 years)	2,111 boys & 2,415 girls
Children (<5 years)	1,211 boys & 1,172 girls
Children (5-11 years)	1,475 boys & 1,658 girls
Children (12-17 years)	636 boys & 757 girls
Adults (18-59 years)	1,120 men & 2289 women
Elderly or 3rd age (>60 years)	126 men & 243 women
People with special needs in both camps	Guilmey: 396 persons of whom 122 elderly persons Kalambari: 1 166 pers of whom 247 elderly persons
Women at risk in both camps	947 persons
Non accompanied/Single HH/Children	383 persons
Single HH Parents	325 persons
Elderly at risk	236 persons
Persons in poor medical condition	72 persons
Disabled	65 persons
BSP JP	19 persons
Family reunification	14 persons

The data in the above table is showing that 11,822 people are fully registered and relocated into both camps with a total of 2,736 persons (890 HH) in Guilmey camp and 9,086 persons (2,981 HH) in Kalambari camp.

The original plan of RCC/IFRC in the initial DREF EPoA was to assist 5,000 refugees (1,000 households) and 5,000 host community members (1,000 households). However, the increasing number of the registered refugees as disclosed recently by UNHCR, requires a readjustment of RCC planned figures to cover the gaps for the most vulnerable caseloads. This situation has led to the decision of readjusting RCC targeted populations for direct assistance to 7,000 refugees (1,400 HH) and 3,000 vulnerable host community members (600 HH). Alongside the proposed readjustment, a larger number of host communities will also indirectly benefit from the social and community services implemented by RCC/IFRC through improved access to safe water and new latrine facilities, within the targeted communities as a whole, but also for the children at community schools' level.

There needs are numerous, and refugees are for the moment not willing to return for at least the actual 9,000 people settled the camps. Based on that, all the needs identified per sector will be used for resource mobilization for a potential long-term programme while short term actions as identified in the EPoA will be implemented/completed to provide immediate support in coordination with other partners.

Results of the RCC assessment by sector

a. Food security

Inter-community conflict has caused massive and unexpected displacements of the population in this locality with its corollary in huge losses in terms of food and livestock. Livelihoods related to fishing, agriculture, market gardening and livestock in all the villages are affected with material losses including carts, ploughs, hoes, sprayers, motorcycle pumps, huts, cattle and burned shops.

For example, the evaluation team's analysis of food, nutrition and market security following interviews with refugees highlights the following points:

In terms of physical and economic access to food, the trend in the prices of basic food staple is therefore upward, its accessibility at all times at affordable prices would be difficult for vulnerable refugees, especially pregnant and lactating women and children under 5 years of age to satisfy their food in view of their dependence on food aid from humanitarian organizations or markets. This increase in prices is explained by the fact that markets were burned during the events with all their food stocks and other material and financial goods.

In terms of food availability, refugee households have no stock; they are much more dependent on markets for their food consumption by selling part of the aid to buy condiments. There is a very rapid depletion of stocks of food aid distributed monthly to refugee's households. The assessment reveal that this assistance does not cover the month, which could still plunge the refugees into desolation.

Refugees do not have access to arable land, they can no longer fish and do not have the financial means to develop other income-generating activities. They share food with neighbors. This community solidarity has always existed in the area. Currently, the community lives without stockpiles and livelihoods. So, if arrangements are not made in time, the situation may be catastrophic for these refugees. As a survival strategy, the consumption of meals of these people who had a frequency of three meals a day before the conflict, has drastically dropped to one meal a day for children and some adults and sometimes they do not consume anything except porridge for the day.

At Mandelia sites, rations were given only once at the beginning of the crisis. In the official camps RCC organizes distribution of food provided by WFP every end of the month.

Given the gravity of the food security situation on both sides, the following priority food security needs have been identified:

- Organize an urgent and free distribution of food;
- Make an unconditional cash distribution to all refugee households;
- Reflection on the direction of food cash distribution in the most vulnerable sites of Mandelia
- Develop Income Generating Activities (IGAs) for affected women heads of household and widows,
- Make high-level advocacy with the authorities to allocate plots to refugees to develop vegetable and rain-fed crops;
- distribute market gardening seeds for the 2022-2023 crop year.

Refugees in Kalambari camp went strike on 04 April 2022. They took the camp officials hostage to require more food because they claim that the ration given by the WFP cannot cover one month.

As a result, the refugees ransacked the food stock located inside the camp and looted everything. There have been recorded injuries with knives, especially among the refugees who wanted to calm down the demonstrators.

b. Cash Transfer

Having lost their sources of income and not having a stock to survive in the host country, Cameroonian refugees find themselves in a precarious situation. Most of them are obliged to sell part of the in-kind assistance received to get other unmet needs. Cash assistance is essential.

A field trip was made by the RCC cash assistance officer and the IFRC cash coordinator in the various camps and refugee sites as of 28 February 2022. This visit was triggered by the concern for a good coordination of cash assistance in the camps.

The Social Nets, financed by the World Bank, also plan to provide cash assistance to Cameroonian refugees. In an interview with the head of the Cash Component within the Social Nets, we were told that they intend to provide cash assistance to all refugees in the camps and spontaneous sites. Cash assistance will also be given to households in the 35 villages around these camps.

Based on this, RCC analyses the needed actions as follow:

- Focus its cash assistance in the Kalambari and Guilmei camps only
- Establish targeting criteria to give priority to the most vulnerable refugees
- Involve the beneficiary community in the validation of the criteria by monitoring committees
- Raising community awareness on the proper use of cash assistance received from the various partners
- Explanatory messages to the household by the Red Cross while the other partners will grant the cash per individual

As social safety nets are almost at the end of the beneficiary registration activity, it is most likely that they will provide assistance before the RCC. Possibility to send money on the phones that the beneficiaries will receive.

c. Wash

The spontaneous sites of Jazeera and Malfana are globally very vulnerable because they are undeveloped with a low rate of humanitarian coverage to date. The WASH aspect being the most glaring sector in terms of need observed in all official or unofficial sites, it is even more so for the populations in the spontaneous sites of Jazeera and Malfana.

Situation of latrines and sanitation in the camps

In the spontaneous site of Jazeera, there are more than 3,615 people for 4 latrines in the joint UNHCR/RCC assessments and in Malfana 3,295 people for 5 latrines counted. These latrines are built by MSF. While in the camps, UNHCR has already built several latrines already covering basic needs in this area.

For WASH, the construction of latrines by the RCC was cancelled in the two official camps because they were already covered by UNHCR. UNHCR suggested the RCC to ensure the construction of the latrines planned in the DREF rather in spontaneous sites.

Nevertheless, in these sites, there is a high mobility of refugees. Some go to their original homes especially men and others waiting to be relocated to the camps. On 1st of March 2022 already, about fifty households of the Malfana site were relocated in Kalambari camp.

The NS WASH Coordinator has started preparations for the construction of latrines in these sites despite this observation because it has been reported that other refugees can come to this site any time next as has been done in the past. In addition, these latrines can also be used by the community of the villages around these spontaneous sites.

Latrines set up even in the camps may be insufficient if refugees continue to be relocated to the same camps in Kalambari and Guilmei.

Other WASH needs per camp

➤ **Kalambari Camp**

There is a quite good access to drinking water with 17 boreholes on site. Households obtain their supplies from drinking water sources. Households experience some difficulties during transport and storage due to insufficient buckets. Existing water sources do not meet SPHERE standards.

In hygiene and sanitation, the situation is fair due to RCC and UNHCR actions. We can note less defecation in the open air and visibly sanitized camp. On the other hand, there is no separation of men's and women's toilets in the camp, there is no handwashing kits, and maintenance for latrines and toilets is poor. Priority needs identified are the promotion of hygiene (hand washing, etc.) and sanitation (garbage management, etc.); and the distribution of hygiene kits (bucket soap, cans, water treatment product, etc.). The NGO IAS is intervening on the awareness activity WASH in the camp.

➤ **Guilmey Camp**

There is a lack of access to drinking water on the camp, 05 boreholes with manual motors for 9,002 people. Households experience difficulties during transport and storage of water due to lack of NFIs.

In hygiene and sanitation, the situation is also very critical. Open defecation is visibly practiced in some parts of the camp due to lack of awareness. It is recorded poor handwashing and garbage management practices that should be addressed. Finally, there is no separation of the toilets for men and women, and maintenance is poor.

Priority needs identified:

- Immediate water treatment and reinforcement of human-powered boreholes;
- Increase in the number of emergency latrines;
- Promotion of hygiene (hand washing, etc.) and sanitation (garbage management, etc.);
- The distribution of hygiene kits (bucket soap, cans, water treatment product, etc.);
- Donation of dignity kits to 960 women and girls;
- Reflection on the orientation of wash assistance planned in the most vulnerable sites of Mandelia, sites not equipped, particularly when it comes to distribution activities. Awareness-raising is a necessity in all sites and is the statutory responsibility of the RCC;
- Increase in emergency latrines;
- Distribution of hygiene kits;
- Raising awareness to avoid cases of diseases;
- Increase the number of boreholes for better hygiene practice.

d. Protection and RLF

The assessment reveals cases of gender-based violence (GBV) reported on both sides at the Guilmey site, rape and sexual violence against women and girls without appropriate response, insecurity at the camp level and cases of separated children and unaccompanied children.

No tension was reported between refugees and the host community in Kalambari camp; but in Guilmey camp, a distribution of food made by the town hall was devastated by the host population which caused tension between the refugees and the host community.

Although there have not yet been major protection incidents in the area, it is important to set up community awareness actions to anticipate possible tensions.

It is necessary to think about a possible source of energy for the refugees which is an important gap to be urgently filled otherwise there is a probable risk of protection or even clashes between the refugees who go a bit far to collect wood for cooking.

There are humanitarian actors who are in charge of the psychosocial component including International Rescue Committee (IRC) in Kalambari camp and ALIMA in Guilmey camp. ICRC with the support of RCC volunteers is ensuring RLF and has set a 2-day call center to allow community to stay in contact with their families in Cameroon.

Targeting

Number of people being assisted under the DREF allocation is 10,000 people (2,000 households) on which 5,000 displaced persons (1,000 households) and 5,000 from the host community (1,000 households).

For now, the proposed operation targets the localities that host displaced households identified in the Chari Baguirmi Province. Depending on the evolution of the situation and taking into account accessibility in the region, the operation could be extended to other localities, or even to neighbouring provinces. A thorough assessment of the situation will be conducted for this purpose. The host population benefits from DREF's activities of hygiene and sanitation awareness sessions and latrines constructed in the Guilmey school. All other assistance is given to refugees located in the camps. For the cash and material assistance, selection criteria are based on vulnerability, assessment and other actors actions already done or foreseen. Some criteria applied are:

- the most vulnerable affected households which left everything behind (houses, material goods, livelihoods, income-generating activities, etc.) in Cameroon and are now forced to live in precarious conditions on refugee sites;
- people or households with special needs who are homeless and without means of subsistence;
- women heads of household, widows, elderly, disabled, chronically ill, pregnant or breastfeeding women, children under 5 years old, separated children, etc.

Risk Assessment

The assessment has showed the same security and access risk detailed in the EPoA. See [here](#).

B. Operation Strategy

Overall operational objective

The objective has been slightly revised due to changes on targeting. The revised objective of this operation is to provide basic assistance to people which fled violence in Cameroon in December 2021 by providing unconditional cash assistance and emergency health and WASH services to 10,000 people.

This is no more inclusive of host communities except for WASH services that are for general benefit for the camps and surrounding host communities.

Proposed strategy

This EPoA will be implemented in the asylum-seeker reception sites, which hosted the initial assessment mission by RCC assessment teams. The operation was planned to take place over a period of four (04) months and is now extended to 6 months and aim to assist 10,000 people targeted by this DREF.

To do this, the activities detailed on the EPoA per sectors has been maintain except for the targeting location for each. See details of the proposed strategy in the [EPoA](#).

Below is the table of achievement and evolution of the remaining activities as per 11 April 2022:

Activities implemented	Achievements	Upcoming Events	Timeline
Assessment	Report issued	Continues monitoring of the situation	N/A
Identification of beneficiaries for cash	Registration of beneficiaries completed	Done	N/A
Training of 100 volunteers on water purification techniques and on sensitization to health and hygiene and CEA	Completed / Training of 120 volunteers 2 days in WASH and health awareness and 2 days in CEA	Done	N/A
Printing of IEC (flyers, Posters, image boxes)	Completed and distributed by refugee household	Done	N/A
Awareness sessions - deployment of 10 volunteers 2 times a week for 16 weeks (perdiem)	20 awareness sessions (10 sessions per camp)	Ongoing	2 sessions /week/camp
In progress			
Finalizing the distribution mechanism with the FSP	First meeting held	Ongoing	week of 25 April
Coordination meetings with stakeholders (Government, etc.)	Participation in meetings with partners involved in the camp	Ongoing	
Continuous monitoring of markets and awareness of traders	Price analysis / exploitation of secondary data	Ongoing	
Construction of emergency latrines	2 Blocks already built (it is planned to build 3 blocks of 2 latrines each in the school of camp Guilmeiy	Construction of the 3rd block and finishing	finalized the week of 18 April 2022
Procurement of handwashing kits	Ongoing logistics procedures		End of April
Red Cross vests for supervisors and RCC staff	Ongoing logistics procedures		End of April

Bibs	Ongoing logistics procedures		End of April
Voluntary protective equipment (gloves, masks, etc.)	Ongoing logistics procedures		End of April
Feedback mechanism	Started in the camps	Ongoing	Until the end of the DREF operation
Conflict management mechanism	Started in the camps	Ongoing	

However, some important activities have been delayed hence RCC's request for the non-cost extension (NCE) to continue the operation and to ensure the effective completion of all planned activities.

The activities that have been delayed are the following:

- WASH and health awareness sessions
- Construction of latrines under WASH activities. This is delayed due to refugees moving to the official camps and coordination with government to get the go ahead for construction out of the official camps. The construction of latrines planned in the DREF are being built in the official camps, and in the Guilmeay camp school. Due to high costs of the latrines validated by the WASH cluster, instead of 20, NS will build 6 semi-permanent emergency latrines.
- Raising awareness among households on the use of cash. Awareness meeting are planned for the validation of cash assistance beneficiaries' list.
- Cash distribution to 1,000 households (one-off) and payment of FSP fee that were already planned for the week of 25 April, depending on the availability of funds. The cash transfer will be done in a one-off disbursement to the most vulnerable households in the camps. There is additional fee to be managed in the savings under other budget lines of completed activities.
- CBS training and equipping volunteers with CBS kits (already planned for the coming days as soon as funds are available)
- Procurement of hand washing kits, dignity kits for 960 women and girls for 3 months, protections and bibs for volunteers to be completed and distribution planned by week of 1st of May.
- Training of 60 community relays (leaders) to identify the modalities of community participation, and support for implementation (already planned for the coming days as soon funds are available)
- Awareness raising through radio broadcasts, town criers and community meetings are already planned for the coming days.

Operational support services

Human resources

Details of the HR strategy plan is in the [EPoA](#). In terms of achievements, the NS has been able to mobilize more volunteers in the global response in addition to those mobilized through this DREF operation.

IFRC has supported the deployment of a Surge with experience in relief in population movement situation since 05 February 2022 for three months, which could be extended if required. Moreover, to ensure proper financial monitoring throughout the operation, a member of the IFRC/Cluster finance team in Bangui will be designated to support the operation remotely. Details of human resources engaged for the operation at NS level remain the same as planned in the DREF EPoA.

Planning, Monitoring, Evaluation and Reporting (PMER)

NS due to continuous fluctuation of the situation and delay in receiving the funds at NS level, the detailed assessment has been completed in March. The results have been used to document this update but some of the recommendation has been adapted to the more recent situation described in the first section of this update. Close monitoring system is in place at NS level and with IFRC through regular field mission (NS, Surge and IFRC migration delegate in the country). A mission from CAR delegation has also been conducted with Head of Delegation, Project manager in February).

A weekly call has been established with the support of operations and DREF to provide all technical and operational orientation to the NS to improve decision making throughout implementation.

PMER will ensure that monitoring and reporting are consistent with the changing situation on the ground. In collaboration with the Federation's disaster management department and RCC's programme coordination, the PMER Officer will monitor, evaluate and report on activities. The same coordination has been maintained with field partners in place (Government and UNHCR in the day-to-day work) and with all the listed humanitarian organisations attending coordination meeting held in a regular basis.

SITREPs and joint assessment reports are provided in a regular basis to inform all country and external partners on the current needs and the actions.

- A monitoring/evaluation plan has helped provide the above activity tracker and this will continue;
- Regular reports will be prepared and shared;

- A training session on the basic principles of monitoring/evaluation and on community engagement will be carried out for the volunteers and coordinated by the PMER Manager.

At the end of the operation, a workshop on the capitalization of good practices and lessons learned will also be organized.


Community Engagement and Accountability (CEA) (Target: CEA training of 100 RCC volunteers and 30 RCC technical staff and deployment of trained persons to sensitize refugees in both camps and work on feedback and complaints management). One hundred (100) participants have been identified and proposed to be trained in both camps. Two trainers were in charge of facilitating the different CEA sessions. The trainers are chosen among the staff who took part in the CEA training organized by the IFRC CEA Senior Officer. Trained and dedicated RCC volunteers acting as CEA focal points are in place (one volunteer-focal point per refugee block); coordinated by a CEA focal point supervisor to implement the CEA mechanism in each camp.

Security

Despite a significant improvement in the security situation over the past decade, Chad continues to experience occasional violence. More details of the security global situation is provided in the [EPoA](#).

During the implementation, security incidents have been reported in the camps and surrounding. A strike of refugees in Kalambari camp was observed on 4 April 2022. They took the camp officials hostage to request more food because they claim that the ration given by the WFP cannot cover one month. They ransacked and looted the food stock in the camp and looted everything. There have been recorded injuries with knives, especially among the refugees who wanted to calm down the demonstrators. The NS with the support of IFRC has followed the appropriate security measures and has been obliged to stop its activities for a few days to make sure the incidents were completely solved.

C. DETAILED OPERATIONAL PLAN

 <p>Livelihoods and basic needs People targeted: 5,000 Men: 1,000 Women: 4,000¹</p>		
Outcome 1: communities, particularly in disaster or crisis-affected areas, restore and strengthen their livelihoods		
Indicators:	Targets	Actual
% of affected households receiving cash support on (revised indicator- localities changed)	1,000 (100%)	0
% of households that received cash do find it appropriate and useful to meet their needs (Target: at least 70% or 700 households)	70	0
Output 1.1: Livelihoods and basic needs output 1.5: Households receive unconditional/multisectoral cash grants to meet their basic needs		
Indicators:	Targets	Actual
Number of people reached by the cash approach (Target: 5,000 people)	5,000	0
Number of follow-up visits to households that received cash (Target : 2 visits)	2	0
Number of volunteers participating in cash transfer activities	28	28
Progress towards outcomes		
Capital reconstruction assistance is important to enable refugee households to meet at least their basic needs. The detailed assessment mission of 12 February specifically recommended to support households in restoring and rehabilitating their livelihoods and providing complement to their food basket.		



Health

People targeted: 10,000

Men: 3,400

Women: 6,600

Outcome Health 2: medium-term health risks for affected populations are reduced

Indicators:	Target	Actual
% of affected households benefiting from health sensitisation on official and unofficial sites (Target: 50% or 2,000 households) – (revised location in the indicator from Farcha Milezi and Oundouma sites to the actual official and unofficial sites)	2,000 (50%)	2,000

Output Health 2.1: the health situation and immediate health risks are appropriately assessed

Indicators:	Target	Actual
Number of volunteers participating in health promotion activities (Target: 100 volunteers)	100	100
Number of sensitisation sessions (Target: 8 sessions)	08	04
Number of first aid kits provided to Red Cross branches	20 (10 per branch)	10

Progress towards outcomes

Sensitization has started and volunteers are actively providing first aid in the camps, as necessary.



Water, sanitation and hygiene

People targeted : 10,000

Men: 3,400

Women: 6,600

Résultat 1: Réduction immédiate des risques de maladies hydriques dans les communautés ciblées

Indicators:	targets	actual
% of target population with access to safe water (Target 100% or 2,000 households)		Achieved by other partners

Output 1.1: WASH output 1.1: Daily access to safe water in quantity and quality that meets Sphere and WHO standards is provided to the target population

Indicators:	targets	actual
Number of people targeted with access to safe water (Target: 10,000 people)	10,000	00
Number of community relays trained (Target: 60 leaders)	60	00
Number of households in the host community that receive the material for the purification of their wells (Target: 1,000 households)	1,000	00
Number of volunteers trained on WASH elements (Target: 100 volunteers)	100	120
Number of household water treatment follow-up visits	3	01

Progress towards outcomes

Access to water and wash activities are underway. Changes due to reality in the camps and needs are detailed in the section 3 and table above.

Output WASH 1.3: Adequate sanitation that meets SPHERE standards in terms of quantity and quality is provided to the target population.

Indicators:	Targets	Actual
Number of people with access to emergency latrines	5,000	5,000

Progress towards outcomes

Actually, more than 5,000 people are in need of latrines, but due to the coverage of emergency latrine needs by other partners working in the two camps, RCC approach and activities have been changed. The WASH cluster, following its evaluation mission of 4 March 2022 in the operational zone, recommended that the activities planned by the RCC in this sector be reoriented in the schools of the camps (particularly in the communal school of Guilmeiy, where 6 semi-durable latrines have already been built by the WASH/RCC department). In terms of coverage and ratio, the achievements of the RCC, allow today to cover approximately 300 pupils' latrine built in Guilmeiy). The importance of this strategic choice can be explained by the increase in the need for latrines in the Guilmeiy school, following the influx of Cameroonian refugees and the registration of their children in the school to participate in educational activities. The number of refugee and indigenous pupils in the Guilmeiy school is now estimated to be around 3,000, some of whom constitute the recent influx of refugee children.

The RCC, with the available budget that should be used to build 20 emergency latrines, ended up building six (6) semi-sustainable latrines (3 blocs with 3 latrines), in response to the recommendations of the WASH cluster. The cost of a semi-sustainable emergency latrine is three times more expensive than the emergency latrine. This justifies the small number of semi-sustainable latrines built.

The unmet latrine needs are also important for the Kalambari school. Unfortunately, the funds available do not allow the RCC to consider actions in this direction. However, the SN leadership is engaged in advocacy to draw the attention of other partners/donors to these unmet needs.

Access to safe drinking water is underway and is also covered by other partners' actions. Due to the increasing number of families moved to the Guilmeiy and Kalambari camps, the support in terms of WASH is still a gap to be filled to prevent water borne diseases.

Output WASH 1.4: Hygiene promotion activities that meet Sphere standards for identification and use of hygiene products provided to the target population

Indicators:	Targets	Actual
Number of WASH kit installed (Target: 100)	100	100
Number of households reached with sensitization on WASH, hygiene and use of materials (Target: 2,000 Households)	2,000	1,200
% of people who has confirmed received the sensitization messages and have understood (Target: At least 65 % or 1,300 ménages)	65	00
Number of women and girls who received dignity kits (Target: 960)	960	960
Number of hygiene promotion sessions organized and held (Target: at least 32 sessions)	32	16

Progrès sur la réalisation des résultats

In terms of hygiene and sanitation, the situation is just as fair in Kalambari, with the exception of the non-separation of male and female toilets and the lack of handwashing kits. The most critical situation is in the Guilmeiy camp, where open defecation is common in some parts of the camp, due to the lack of latrines and the lack of hygiene awareness, poor handwashing practices linked to a lack of knowledge of good hygiene practices and the absence of handwashing kits.

Another multi-stakeholder assessment, conducted by UNHCR with the participation of the RCC in the spontaneous sites and host villages on the Mandelia/Oundouma axis conducted on Friday 4 March 2022 revealed that access to drinking water and the state of hygiene and sanitation are serious problems in both the sites and the host villages. The management of rubbish and wastewater, and the open defecation of a large proportion of these populations, expose households to serious public health problems. Water, hygiene and sanitation committees, composed of women and men, are set up in the sites and in the host villages. However, it is difficult to conclude whether these committees are effectively operational, particularly in terms of awareness-raising and environmental sanitation activities. This situation exposes the communities (refugees and natives) to enormous risks of waterborne diseases with epidemic potential. The few water sources available in some places, with insufficient flow, are not able to cover all the drinking water needs of the host populations, whose numbers have increased considerably in most villages since the arrival of the new waves of Cameroonian refugees in December 2021.

The Post distribution monitoring is still to be conducted to understand the perception of sensitization messages and promotion activities in the communities.

Strengthen National Society

Outcome S2.1: An effective and coordinated international response to disasters is ensured

Indicators:	Target	Actual
Number of households that received timely and adequate support (Target: 2,000 households)	2,000	Ongoing

Output S2.1.1: An effective response preparedness mechanism and rapid deployment capacity of the NS is maintained

Indicators:	Target	Actual
Number of surge capacity mobilized (Target: 1)	01	01
Number of monitoring visits	10	06

Output S2.1.1: An effective response preparedness mechanism and rapid deployment capacity of the NS is maintained

Indicators:		Target
Number of coordination meetings held	20	10
Number of lessons learned workshops organised (Target: 1)	01	00

Progress towards outcomes

Implementation of the response has faced delay due to delay in the transfer of funds to the field. However, the NS has started sensitisation, and monitoring activities under this DREF and with the support from other partners to address the early stage of refugee's vulnerability. The surge has been deployed and is actively supporting the NS and the migration delegate in country.

D. Financial Report

Financial report as per April shows expenditure of 36.16% of the total allocation. The NS has received the first transfer and is waiting for last allocation to complete the planned activities.



DREF_Operation_-_Standard_Report_2022_

DREF OPERATION

MDRTD020 - CHAD - POPULATION MOVEMENT FROM CAMEROON

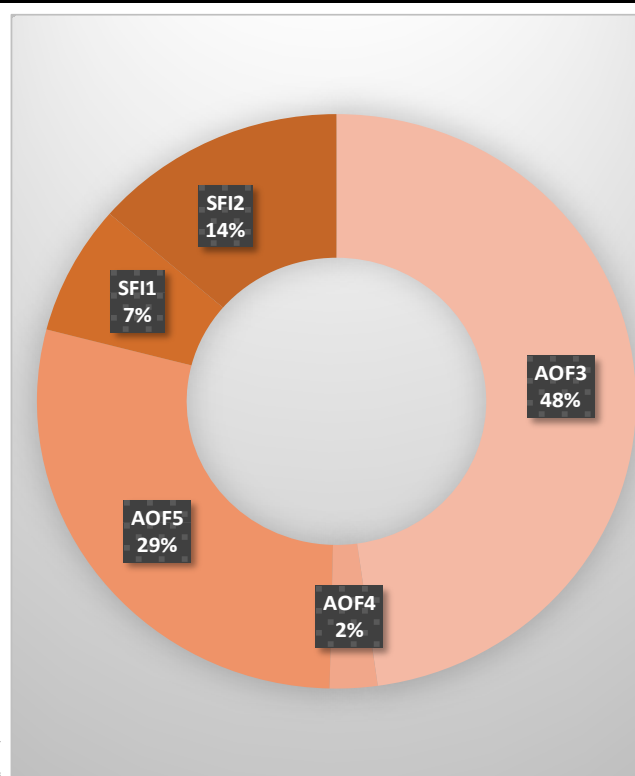
15/12/2021

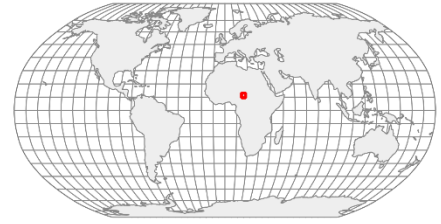
Budget by Resource

Budget Group	Budget
Water, Sanitation & Hygiene	32,970
Medical & First Aid	1,113
Teaching Materials	8,014
Cash Disbursement	115,911
Relief items, Construction, Supplies	158,008
Distribution & Monitoring	1,208
Transport & Vehicles Costs	9,286
Logistics, Transport & Storage	10,494
International Staff	21,465
National Society Staff	1,813
Volunteers	32,062
Personnel	55,340
Professional Fees	1,193
Consultants & Professional Fees	1,193
Workshops & Training	13,118
Workshops & Training	13,118
Travel	6,201
Information & Public Relations	350
Communications	215
Financial Charges	1,749
Other General Expenses	636
General Expenditure	9,150
DIRECT COSTS	247,302
INDIRECT COSTS	16,075
TOTAL BUDGET	263,377

Budget by Area of Intervention

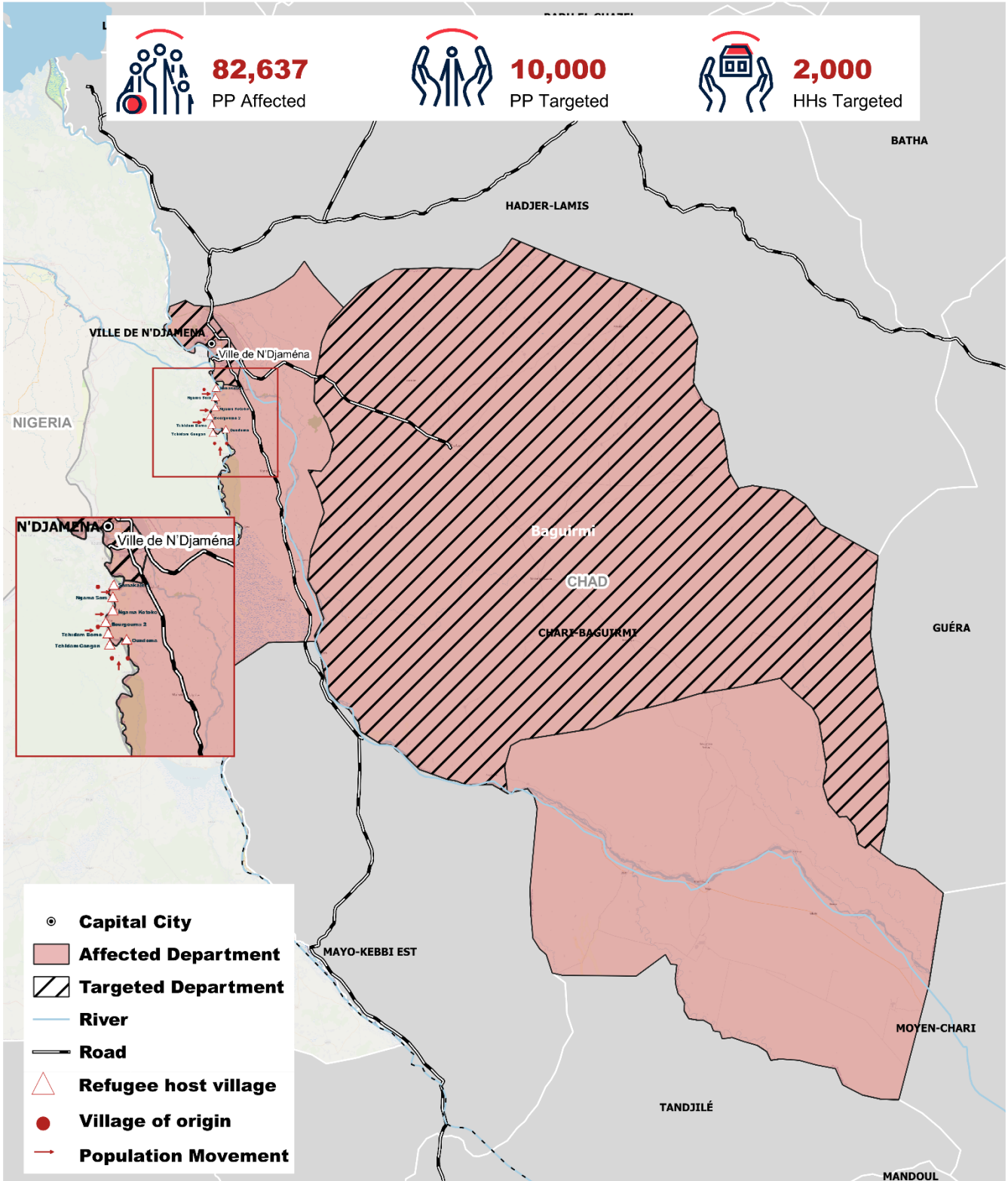
AOF1	Disaster Risk Reduction	
AOF2	Shelter	
AOF3	Livelihoods and Basic Needs	125,884
AOF4	Health	6,773
AOF5	Water, Sanitation and Hygiene	75,483
AOF6	Protection, Gender and Inclusion	
AOF7	Migration	
SFI1	Strengthen National Societies	19,211
SFI2	Effective International Disaster Management	36,026
SFI3	Influence others as leading strategic partners	
SFI4	Ensure a strong IFRC	
TOTAL		263,377





Chad : Population Movement from Cameroon

14 December 2021 • CE-2021-000201-TCD



The maps used do not imply the expression of any opinion on the part of the International Federation of the Red Cross and Red Crescent Societies or National Societies concerning the legal status of a territory or of its authorities.
 Map data sources: GADM, Chad RC, IFRC. Map produced by: IFRC Africa Regional Office, Nairobi

0 0.5 1 km



Contact information

Reference documents



Click here for:

For further information, specifically related to this operation please contact:

For Chad Red Cross:

- Koumo-Gopina Andreas, Secretary General, Chad Red Cross; phone: +235 66 29 35 84; email: sg@croixrougedutchad.org

IFRC Country Cluster Delegation, Bangui:

- Denis Duffaut, Head of Bangui Country Cluster Delegation; email: denis.duffaut@ifrc.org; phone: +236 7286 6045
- Andre Zamouangana, Programme Coordinator, Bangui Country Cluster Delegation; email: andre.zamouangana@ifrc.org; phone: +236 7208 5298

IFRC office for Africa Region:

- Adesh Tripathee, Head of DCPRR Department, Nairobi, Kenya; phone +254 731067489; email: adesh.tripathee@ifrc.org

In IFRC Geneva:

- Nicolas Boyrie, Operations Coordination, Senior Officer, DCPRR Unit Geneva; email: nicolas.boyrie@ifrc.org
- Eszter Matyeka, DREF Senior Officer, DCPRR Unit Geneva; Email: eszter.matyeka@ifrc.org;

For IFRC Resource Mobilization and Pledges support:

- Louise Daintrey, Head of Partnership and Resource Development, Nairobi, email: louise.daintrey@ifrc.org

For In-Kind donations and Mobilization table support:

- IFRC Africa Regional Office for Logistics Unit: Rishi Ramrakha, Head of Africa Regional Logistics Unit, email: rishi.ramrakha@ifrc.org; phone: +254 733 888 022

For Performance and Accountability support (planning, monitoring, evaluation and reporting enquiries)

- IFRC Africa Regional Office: IFRC Africa Regional Office: Philip Komo Kahuho, Regional PMER Manager; email: philip.kahuho@ifrc.org; phone: +254 732 203 081

How we work

All IFRC assistance seeks to adhere to the **Code of Conduct** for the International Red Cross and Red Crescent Movement and Non-Governmental Organizations (NGO's) in Disaster Relief and the **Humanitarian Charter and Minimum Standards in Humanitarian Response (Sphere)** in delivering assistance to the most vulnerable. The IFRC's vision is to inspire, **encourage, facilitate and promote at all times all forms of humanitarian activities** by National Societies, with a view to **preventing and alleviating human suffering**, and thereby contributing to the maintenance and promotion of human dignity and peace in the world.

www.ifrc.org

Saving lives, changing minds.



The IFRC's work is guided by Strategy 2020 which puts forward three strategic aims:

1. Save lives, protect livelihoods, and strengthen recovery from disaster and crises.
2. Enable healthy and safe living.
3. Promote social inclusion and a culture of non-violence and peace