

# OPERATION UPDATE

## Mozambique| Floods and Cyclones

<p><b>Emergency appeal No:</b> MDRMZ016</p> <p><b>Emergency appeal launched:</b> 23/01/2021</p> <p><b>Emergency appeal revised:</b> 01/02/2022</p> <p><b>Operational Strategy published:</b> 09/03/2022</p>	<p><b>Glide No:</b> <a href="#">TC-2021-000008-MOZ/TC-2022-000184-MOZ</a></p>
<p><b>Operation update #3</b></p> <p><b>Date of issue:</b> 27/03/2022</p>	<p><b>Timeframe covered by this update:</b> From 23/01/2021 to 22/03/2022</p>
<p><b>Operation timeframe:</b> 48 months (25/01/2021 – 31/01/2023)</p>	<p><b>Number of people being assisted:</b> 226,500 (115,000 in 2021)</p>
<p><b>Funding requirements (CHF):</b> CHF 5.5 million through the IFRC Emergency Appeal CHF 7.5 million Federation-wide</p>	<p><b>DREF amount initially allocated:</b> CHF 500,000 (including CHF 140,041 for imminent disaster)</p>



*Rapid Needs Assessment of damage in Monapo, Nampula Province*

This [Emergency Appeal seeks CHF 7,5 million](#) and to date stands at 27 per cent funded. Further funding contributions are needed to enable the Mozambican Red Cross (Cruz Vermelha de Moçambique, CVM), with the support of the IFRC and other Movement partners, to provide urgently needed humanitarian assistance and protection to 226,500 people affected by the devastating sequence of floods and storms that have hit Mozambique this year.

**23 January 2021:** IFRC launched a DREF amounting to CHF 359,689.

**28 January 2021:** Emergency Appeal launched to the amount CHF 5.1 million.

## 2022

**Tropical Storm Ana makes landfall in Angoche, Nampula**



**11 March 2022:** Tropical Cyclone Gombe impacts Mongicual, Nampula with 190km/h windspeeds, a category 3 storm, followed by 200mm of rainfall in 24 hours. Information Bulletins published for [Tropical Cyclone Gombe](#).

**11 March 2022:** Re-activation of the EAP for floods in the Licungo river, Zambezia



**2021**  
**Tropical Cyclone Eloise makes landfall 20km from Beira**

**21 January 2022:** Imminent DREF of CHF 140,014 launched for Early Action.

**24 January 2022:** Tropical Storm Ana makes landfall in Angoche, Nampula.

**25 January 2022:** 200mm/24h rainfall results in massive flooding of the Rovubúe river in Tete.

**26 January 2022:** EAP for Floods launched for the Licungo River in Mocuba, Zambezia.

**1 February 2022:** launch of the Revised Emergency Appeal

**24 February 2022:** 3 confirmed cases of cholera in Caia, Sofala. Information Bulletins published for [Cholera](#).

**10 March 2022:** Publications of the [Operational Strategy](#) for the response to TS Ana and the remaining rainy season



**2022**  
**Tropical Cyclone Gombe in Mongicual, Nampula.**

# A. SITUATION ANALYSIS

## Description of the crisis

Vulnerable families in the central Provinces of Mozambique have been left devastated once again and are in urgent need of humanitarian assistance, including shelter materials to rebuild homes and cash assistance to help restore livelihoods.

In recent years, Mozambique has suffered repeated devastating cyclones and floods, particularly the central Provinces and this year has been no exception. Tropical Storm Ana making landfall on 24 January 2022, Tropical Storm Dumako on 17 February, and Tropical Cyclone Gombe making landfall less than a months later in March. Weather systems in 2022 have impacted the same regions as 2021 (Tropical Storm Chalane and Tropical Storm Eloise) and 2019 (Tropical Cyclones Idai and Kenneth), depleting community resilience and halting the path to recovery. Cyclones Idai and Kenneth were the worst natural disasters to hit southern Africa in at least two decades wreaking havoc in the spring of 2019, killing at last 1,000 people and displacing some 2.2 million people.

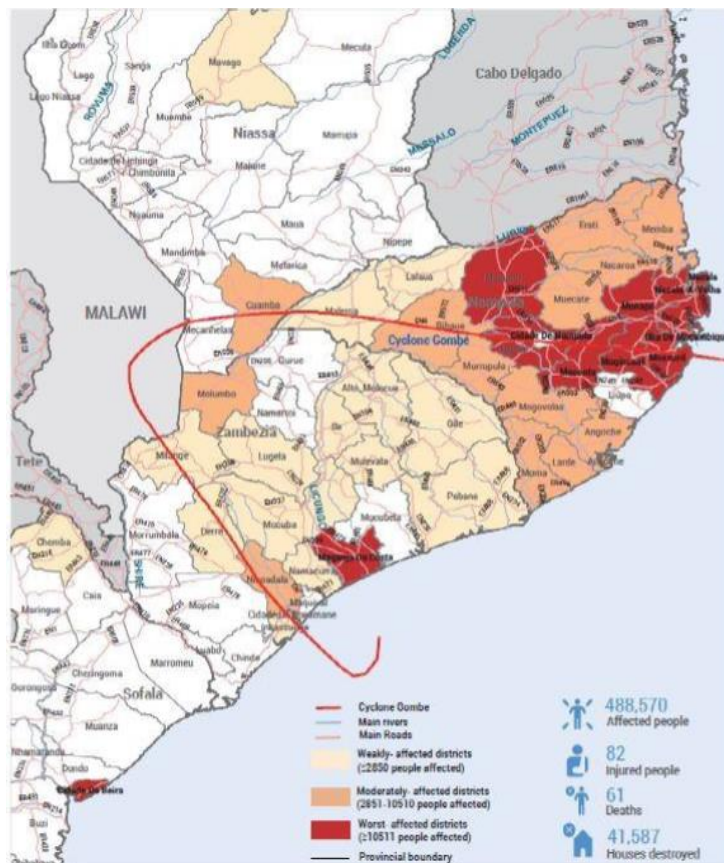
According to the latest [OCHA update](#) there is serious concern that the magnitude of damage caused by Gombe is not yet fully determined as humanitarian partners are gradually accessing areas that had been cut off by floods, specifically in Zambezia.

### Tropical Storm Ana

On 24 January 2022, Tropical Storm Ana made landfall in Angoche, Nampula Province on 24 January 2022 with wind speeds from 100-130 km/h. The storm brought precipitation of 200mm in 24 hours, leading to immediate flooding in the Licungo and Luazi Rivers. Twenty-four hours after landfall, tropical storm Ana turned into a tropical depression system and brought significant rainfall to the northern and central regions. Heavy rainfall also impacted Malawi, the runoff of which also reached the Rovubué and Zambezi Rivers in Mozambique. [It was reported that 207 people were injured, 38 deaths and an estimated 185,429 people have been affected and 11,7457 houses destroyed throughout the country.](#)

### Tropical Cyclone Gombe

On 11 March Severe Tropical Cyclone Gombe (Category 3) made landfall in Mongicual District, Nampula Province. Windspeeds were recorded as 190km/h, a category 3 storm, followed by 200mm of rainfall in 24 hours. [Initial assessments register 82 injured and killing at least 61, 488,570 people affected mostly in the provinces of Nampula, Zambezia, Sofala, Niassa and Tete as of 20 March.](#) Gombe heavily affected the provinces of Nampula and Zambezia, and to a lesser extent Sofala, Beira, Tete, and Niassa provinces. The majority of the deaths were recorded in the western province of Nampula, which was



Map of the areas affected by TC Gombe, OCHA Flash Update #5

the hardest hit. A total of 46,265 houses have been completely destroyed, while 41 health centers, 1,458 classrooms have been severely damaged.

The storm followed a curved path through Nampula and Zambezia Provinces, causing the same areas to receive concentrated rainfall of 200mm in 24 hours for multiple days. While Nampula Province had more wind damages, Zambezia was marked by flooding. After re-entering the Mozambican channel, the storm returned to Zambezia province on 17 March as a tropical depression. On 18 March high levels of rainfall led to floods in Sofala Province.

The combined impact of the storms in the 2021/22 rainy season is devastating, in particular on housing, livelihoods, health and provision of water and sanitation for highly vulnerable populations, already affected by previous disasters, and with limited resources available to cope.

There are serious concerns about the widespread floods, displacements, damages to critical public infrastructures and private houses, as well as the interruption of basic services. The floods also swept away livestock and drowned fields, destroying the livelihoods of many inhabitants and precursing food insecurity in the coming months. Waterborne and vector borne illness is expected to rise including acute watery diarrhea, malaria and cholera, which has a confirmed outbreak in Caia, Sofala Province since the end of February. There has been an increase in diarrhea in Sofala, Zambezia and Nampula provinces. It is likely that cholera will spread into other regions due to the massive floods.

## Summary of response

### Overview of the host National Society and ongoing response

The Mozambican Red Cross (Cruz Vermelha de Moçambique, CVM) has a longstanding presence in all 11 provinces of the country, and currently covers 133 districts through its district branches, out of the 154 districts. The CVM has approximately 220 permanent staff that ensure programmes are delivered in all provinces and manage a network of 6,500 volunteers countrywide. CVM has also 17 warehouses in 9 provinces, enabling a considerable preparedness and repositioning capacity to respond to emergencies.

### CVM Activities by Province, TC Gombe

#### Nampula

- CVM mobilized key personnel (Disaster Management, PMER and Communications) to Nampula to support the National Institute for Disaster Management (INGD) for technical analysis of the situation and coordination for the response. They were later joined by a CVM Operations Manager.
- CVM volunteers in Nampula started early warning messaging before landfall and assisted with Rapid Needs Assessments immediately after the storm
- 40 CVM volunteers were trained, in cooperation with the Shelter Cluster Coordinator, to assist in the distribution and assembly of shelter kits
- The IFRC mobilized their Disaster Management Coordinator, Shelter Cluster Coordinator, and Communications Officer to Nampula to directly support CVM in the response
- The German Red Cross supported CVM by sending their Urban DRR personnel, with shelter expertise, to assist in the Rapid Needs Assessments in Nampula along with their Forecast-based Financing personnel



*Shelter toolkit and IEC training for CVM*

- The Belgium Red Cross in Nampula mobilized resources for the response as part of their ongoing project in Nampula and has personnel on-location to assist CVM

### Zambezia

- CVM volunteers in Zambezia started early warning messaging for floods, including prevention measures and evacuation routes, and assisted with Rapid Needs Assessments immediately after the storm
- CVM in Zambezia used the Search and Rescue boats to transport 625 people in Quelimane, Namacurra and Nicudala
- The CVM personnel in Nampula moved to Zambezia to assist with the EAP implementation
- CVM mobilized an operations manager to support the branch with the response

### Overview of Red Cross Red Crescent Movement in-country

IFRC closely coordinates with the five partner National Societies currently present in-country, providing long-term support to the Mozambican Red Cross. They are the Spanish Red Cross, German Red Cross, Belgian Red Cross-Flanders, French Red Cross, and the Italian Red Cross. The Netherlands Red Cross currently does not have in-country presence but continues to partner with CVM. GRC also has a Forecast-based financing project that covers Nampula, Zambezia, Sofala, Inhambane and Gaza provinces. Additionally, the Belgium Red Cross-Flanders has a presence in Nampula and is assisting with technical staff and household items in that province.



*Loading NFIs in Gaza for distribution*

The International Committee of the Red Cross (ICRC) has a delegation in country and works in conflict-affected Cabo Delgado where significant displacement of populations continues. In Manica and Sofala provinces it supports covid-19 prevention activities and restoring family links in emergencies. In addition to ground operations, the ICRC collaborates with CVM capacitating its staff and volunteers in the areas of international humanitarian law (IHL), safer access and other jointly identified areas.

The [DREF for imminent disaster](#) approved on 21 January in anticipation of Tropical Storm Ana's landfall was merged in the loan covered under the revised Emergency Appeal. The revised [2021/22 Floods and Cyclones Emergency Appeal](#) was launched on 25 January 2021 to include Tropical Storm Ana in the response and cover any additional storms or floods in the season. Tropical Cyclone Gombe is now included in this response, resulting in minor changes to the [Operational Strategy](#) published on 9 March 2022.

The German Red Cross (GRC) assists CVM in the execution of an [Early Action Protocol \(EAP\)](#) for floods in a tri-party agreement with IFRC that was triggered for the Licungo river on 27 January 2022. The activation of the protocol under the Forecast-based Action by the DREF is in response to the floods and not covered by this revised Emergency Appeal. A total of 850 households were reached through this response in the CFM, Sacras, Samora Machel and Baixo Licungo neighborhoods of Mocuba District, Zambezia following the Tropical Storm Ana. The EAP was re-activated on 11 March to respond to Tropical Cyclone Gombe in Maganje da Costa, Zambezia along the Licungo River for up to 1,500 households. IFRC provided support by organizing the logistics to transport of the Non-Food Items (NFIs) for this distribution from the Gaza warehouse to Zambezia.



*Preparation for the kit distribution in Maganja da Costa*

### **Overview of non-RCRC actors in country**

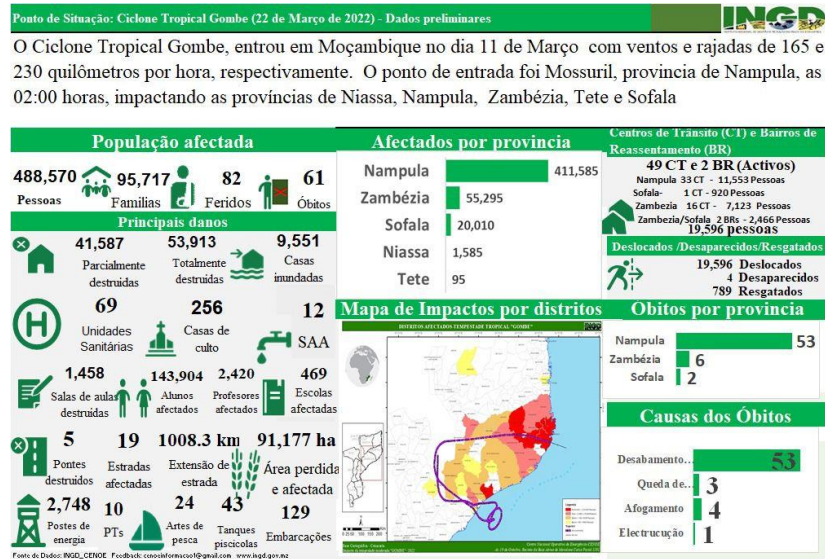
The Cluster system has been active in Mozambique since Cyclone Idai in 2019. CVM/IFRC are leading the Shelter Cluster for natural disasters, UNICEF the WASH Cluster, WHO the Health, WFP the Food Security and Save the Children the Protection cluster. OCHA leads the coordination among the various Clusters, which are grouped by region and are the main source of coordination among humanitarian actors for needs and gaps, working together to support the INGD – National Institute for Disaster Management.

The most visible humanitarian actors in the response, in addition to the Red Cross and Red Crescent Movement and UN agencies are Save the Children, CARE, MSF, Doctors of the World, Action Against Hunger, PLAN International, World Vision and Caritas. These international organizations work alongside national NGOs and Associations, however additional efforts are required to increase national capacity, and localize the humanitarian response.

# Needs analysis

CVM have carried out rapid assessments to collect initial data and key information as regard the extent of the damages after the cyclones and floods. Data has been collected through review of secondary information, community group discussions, key informant interviews, and direct observation. CVM also support Government Cluster lead multisectoral needs assessments which are still underway.

The latest data published by [Institute for Disaster Management and Risk Reduction \(INGD\)](#) can be found [here](#)

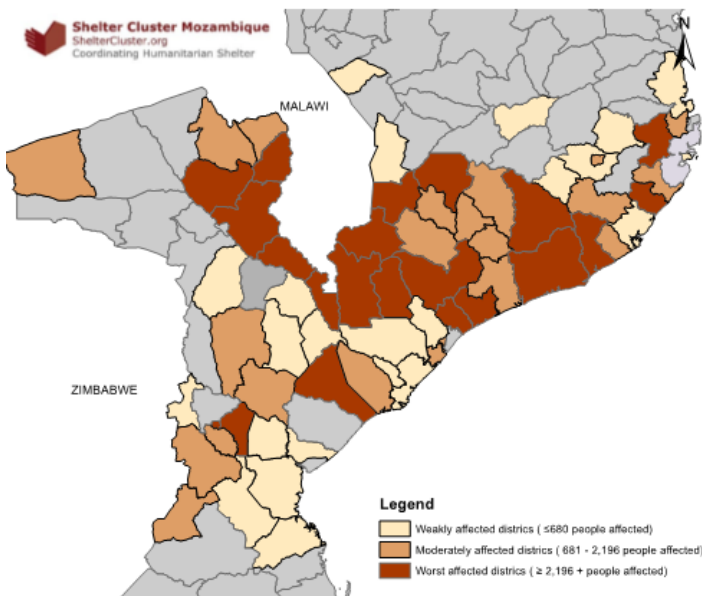


## A SUMMARY OF BASIC FINDINGS AT THIS TIME IS SHOWN BELOW:

### Shelter and Essential Household items

As of 20 March 2022, 53,000 houses have been completely destroyed, 41,000 damaged and 7,000 flooded. There are 49 active accommodation centers in Nampula, Zambezia and Sofala Provinces hosting over 22,000 people. Some of these centers are located in schools, and there is a need to find shelter solutions so that classes may resume. The high number of displaced persons has created a need for increased protection, WASH and Health services, including at accommodation centers.

### 03. Emergency Shelter Needs | Necessidades de Abrigo | TS Ana



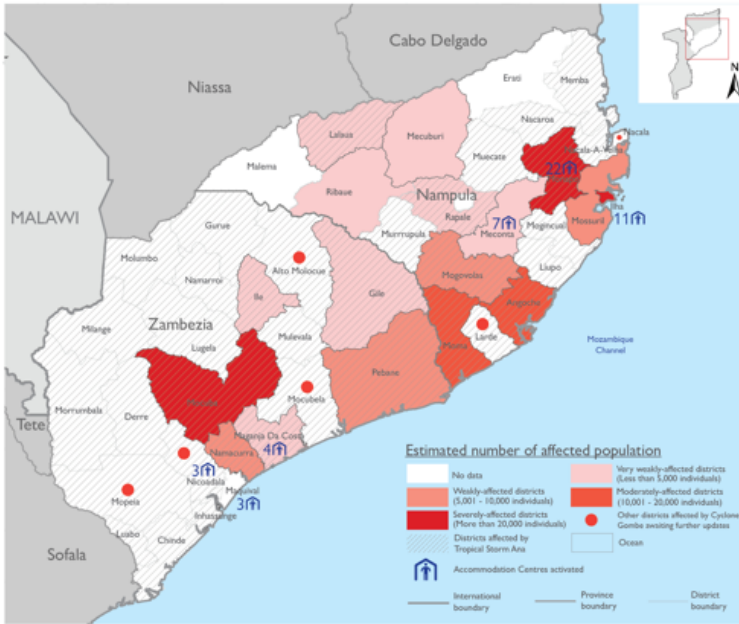
**HIN Emergency Shelter Assistance**  
**37,000 - 40,000 Households in Need**  
**PIN Emergency Shelter Assistance**  
**185,000 - 200,000 People in Need**

**Displaced HIN Emergency Shelter Assistance**  
**370 Families / Households in Need**  
**Displaced PIN Emergency Shelter Assistance**  
**1,850 People in Need\***

\* Assisted in Accommodation Centre in Téte Province

The administrative boundaries and names shown on this map do not imply official endorsement or acceptance by the Global Shelter Cluster. Numbers obtained through OCHA's Mozambique Tropical Storm Ana Flash Update No.9 from February 14, 2022. Prepared on: 23 February 2022

### 03. Emergency Shelter Needs | Necessidades de Abrigo | TC Gombe



**HIN Emergency Shelter Assistance**  
**95,000 - 105,000 Households in Need**  
**PIN Emergency Shelter Assistance**  
**480,000 - 520,000 People in Need**

**Displaced HIN Emergency Shelter Assistance**  
**3,900 – 4,000 Families / Households in Need**  
**Displaced PIN Emergency Shelter Assistance**  
**19,596 People in Need**



#### Livelihoods and basic needs

A total of 67,750 hectares of fields have been destroyed by the floods late in the main growing season. The food security need is expected to rise due to the combined impact of floods and cyclones in the 2021/22 season with increased hunger throughout the dry season from April to November. The loss of livestock and livelihood assets (farming tools, fishing boats and nets, etc.) have reduced households' capacity to generate income.



#### Health

The [cholera outbreak](#) declared in Caia, Sofala Province at the end of February 2022 continues. With the floods teams are preparing for a spread into Zambezia Province as well, due to the close proximity to Caia. There is an increase of diarrhea reported in Nampula and Zambezia Provinces as well. A total of 69 health centers have been damaged by the storm, leaving a gap in essential services, particularly for rural communities. There is concern of increased cases in COVID-19 due to floodwaters, the lack of social distancing due to displacement, and ongoing efforts for vaccination which have not reached many rural areas.



#### Water Sanitation and Hygiene

The risks for waterborne diseases are high in Zambezia, Nampula and Sofala Provinces including diarrhea, malaria, and cholera. Open defecation remains common throughout the country and increases in times of emergency as access to improved sanitation facilities has been limited. Twelve water supply systems have been reported damaged. Rural water collection, often through unprotected sources such as rivers, has the potential for contamination due to the high rainfall. There is an immediate need for clean water supply as floodwaters invade homes and rivers. Sanitation support is necessary to reduce disease outbreaks and ensure the dignity of persons, especially those who are displaced with latrine construction, hygiene promotion, and support for persons with special needs.

## Operational risk assessment

Identified constraint	Analysis
<b>Unfavorable weather conditions</b>	Unfavorable weather conditions coupled with bad state of roads making it difficult to deliver consignment to the affected population. Mozambique is in the midst of the rainy season and continuous rains are predicted for the months of February and March. A total of nine tropical depressions are predicted for the season with possibility to evolve in tropical cyclones. This can lead to further aggravation of the situation and could hinder the implementation of activities
<b>Access</b>	Cutoff of roads and bridges have made certain areas impassable for vehicles carrying both food and non-food items. During the coming months in the rainy season continuous rains and cyclones are predicted which could further hinder access.
<b>Scale of operation</b>	The geographical areas impacted by the floods are significant as six of the eleven provinces in Mozambique were affected. Moreover, the needs are diverse; in WASH, shelter, food, health and protection.

Please see the Operational Strategy for detailed risk assessment: [Operational Strategy](#)

## B. OPERATIONAL STRATEGY

### Update on the strategy


The Operational Strategy for the Floods and Cyclone 2021/22 Emergency Appeal has the following changes in response to Tropical Cyclone Gombe:

- There has been a **large increase in the emergency humanitarian needs of the affected population**. The appeal remains underfunded, which is the main limiting factor for the scale of CVM's response. Additional funding is necessary for CVM to meet immediate needs and support the recovery of people in the six affected provinces. As of now, the available funding has been used to support 500 households on Ilha de Moçambique, Nampula and mobilize the teams to support the combined rapid needs assessments.
- The health team plans to expand the Branch Transmission Intervention approach to Sofala, Nampula and Zambezia Provinces in response to the increase in diarrhoea cases and risk of additional cholera outbreaks. The trainers will pass on the training in this approach to volunteers in each location to conduct household visits and provide health recommendations and referrals. CVM will send health technicians to work with the Ministry of Health in Caia to help manage the outbreak, including support for hygiene promotion, clean up campaigns, and well disinfection.
- The emergency response of CVM for TC Gombe currently focuses on two locations: Nampula Province where the cyclone made landfall and Zambezia Province where the high levels of rain have caused widespread flooding. As further Provinces are affected by flooding caused by Tropical Cyclone Gombe, operations are expected to start to respond to needs in Provinces of Sofala, Tete and Manica. The response is part of the 2021/22 Floods and Cyclones Emergency Appeal. The IFRC has supported CVM in this response through its operation teams based in Mozambique and already responding to TS Eloise. Additionally, the health team is preparing to scale up their response to the cholera outbreak in Caia, Sofala.

# DETAILED OPERATIONAL REPORT

## STRATEGIC SECTORS OF INTERVENTION

For progress since the beginning of the operation, please refer to the [6-month update](#) from 9 August 2021. Note that the progress below applies to the Tropical Cyclone Gombé response. A few indicators have been added to better track the response, they are marked in red.

	<b>Shelter, Housing and Settlements</b>	Female > 18: 3,380	Female < 18: 3,640
		Male > 18: 2,600	Male < 18: 3,380

**Objective:** *Communities in disaster and crisis affected areas restore and strengthen their safety, well-being through emergency shelter and settlements and early recovery solutions*

Key indicators:	Indicator	Actual	Target
	# of households provided with emergency shelter and settlement assistance	500	2,500
	# of households who have durable shelter solutions that meet national and/or Cluster standards for recovery for the specific operational context	TBC	100
	% of surveyed people who report that the shelter solution they implemented has helped in their long-term recovery	TBC	85%

- A total of 500 shelter kits are ready for distribution by CVM and distributions started on Ilha de Moçambique, Nampula. On 19 March, 140 households were reached in Marromone, Lumbo Administrative Post, Ilha de Moçambique, Nampula with the following items:

Item	Total Number/household
Emergency Shelter	1 Full Shelter Toolkit 2 Tarps
Basic Items	3 Capulanas (African cotton fabric)
WASH	1 7L Bucket with Lid 1 Bottle of Water Treatment Solution (Certeza) 2 Bars of Soap
Health	3 Mosquito Nets

This distribution is planned for 4 locations on Ilha de Moçambique (Namalungo, Nacosa, Namige and Morromone) for a total of 500 households.

- Training for 40 CVM volunteers about shelter kits
- Production of IEC materials for shelter kit set up
- 200 posters for shelter toolkit guides were printed



## Livelihoods

Female > 18:	Female < 18:
5,221	5,622
Male > 18: 4,016	Male < 18: 5,220

**Objective:** *Communities, especially in disaster and crisis affected areas, restore and strengthen their livelihoods*

Key indicators:	Indicator	Actual	Target
	# of households supported to meet immediate needs through cash transfers	TBC	4,000
	# of students trained through vocational training programs	TBC	80

No updates at this time.



## Multi-purpose Cash

Female > 18:	Female < 18:
5,200	5,600
Male > 18: 4,000	Male < 18: 5,200

**Objective:** *Communities, especially in disaster and crisis affected areas, restore and strengthen their livelihoods*

Key indicators:	Indicator	Actual	Target
	# of households provided with multipurpose cash grants, including for livelihoods recovery	TBC	4,000
	% of target households that have enough sources of food and income to meet their survival threshold (including cash grants)	TBC	85%

No updates at this time.



## Health & Care

*(Mental Health and psychosocial support / Community Health / Medical Services)*

Female > 18:	Female < 18:
58,890	63,420
Male > 18:	Male < 18:
45,300	58,890

**Objective:** *The immediate risks to the health of the affected population are reduced and the psychosocial impacts of the emergency are lessened*

Key indicators:	Indicator	Actual	Target
	# of people reached with Psychosocial Support services	TBC	34,000

# of people reached with community-based disease prevention and health promotion programming	TBC	226,500
% of target population who can recall 3 or more protective measures for target diseases	TBC	>70%
# of volunteers and health staff trained on EPiC (Epidemic Preparedness and response in Communities), BTIT, Nutrition, MHPSS	TBC	825
# of household reached through Branch Transmission Intervention Teams (BTIT), in which volunteers conduct actions to break transmission of waterborne diseases at household level	TBC	20,000
# of persons reached on nutrition through cooking demonstration and MUAC screening	TBC	5,500
# of persons supported on diseases prevention and hygiene promotion at Community Health Mobilization Posts	TBC	12,000
# of persons reached through Malaria prevention and response through distribution of mosquito nets and RCCE activities	TBC	18,000
# of Household reached with mosquito nets	TBC	1,500

- Branch Transmission Intervention (BTIT) approach for cholera response. Initial volunteer training complete in Sofala Province
- Surge support requested for public health



## Water, Sanitation and Hygiene

Female > 18:	58,890	Female < 18:	63,420
Male > 18:	45,300	Male < 18:	58,890

<b>Objective:</b>	<i>The risks of water related diseases in the communities targeted in recovery phase are reduced in a sustainable manner</i>		
<b>Key indicators:</b>	<b>Indicator</b>	<b>Actual</b>	<b>Target</b>
	# of people reached by hygiene promotion activities using the Branch Transmission Intervention Approach	TBC	226,500 ppl
	# of waterpoints constructed	TBC	10
	# of waterpoints rehabilitated	TBC	30
	# of latrines constructed	5	200
# of Household hygiene kits distributed	TBC	2,000	

# of communities equipped and supported in regular clean-ups of neighborhoods to reduce vectors	TBC	40
# of volunteers trained in PHAST	TBC	120
# of Household reached with WASH NFIs	TBC	1,500

- Initial assessment of the water, sanitation, and hygiene situation in targeted communities
- Distributions of buckets, storage containers and water treatment solution and provision of clean water in cooperation with UNICEF partnership

#### Early Action Protocol (Reactivation) for Floods

- The German Red Cross supported CVM for implementation of the re-activation of the Flood Emergency Action Protocol for the Licungo River basin, as part of the Forecast-based Financing partnership. The trigger was reached on 13 March
- CVM mapped the 1,500 most vulnerable households for the distribution
- The IFRC logistics team hired 3 trucks to transport the NFIs for 1,500 households from the Gaza warehouse in Chibuto to Maganja da Costa for the response.
- Infrastructure damage to roads and bridges prevented the vehicles from arriving in the communities within the timeframe for the EAP. Boats were used to transport the NFIs to the communities for distribution as part of the emergency response. The following items will be distributed:

Item	Quantity
WASH kit (2 buckets, 2 mosquito nets, 2 bottles of water treatment solution, 2 cups, 1 waterproof bag)	1,500
COVID-19 kit	550
Boots	500
Raincoats	500
Whistles	50
Megaphones	16
CVM vests	500
Shirts	500

Distribution planned in Zambezia Province for 1,500 households for emergency response (previously Flood EAP) to floods in Mangaja da Costa, Mogoloma Numiwa and Nante

- CVM provided technical support for latrine construction using local materials in Monapo at an accommodation center benefitting 240 households with 5 constructed
- Monitoring the situation to see if surge support required



## Protection, Gender and Inclusion

Female > 18:	Female < 18:
58,890	63,420
Male > 18:	Male < 18:
45,300	58,890

**Objective:** *Communities become more peaceful, safe, and inclusive through meeting the needs and rights of the most vulnerable*

	Indicator	Actual	Target
<b>Key indicators:</b>	# of people reached with PGI and prevention and response to SGBV awareness messages	TBC	111,500 ppl
	# of RCRC volunteers and staff trained on PSEA, Child Protection and Safeguarding, Sexual and Gender-based Violence (SGBV), mandatory reporting and zero tolerance policies, gender equity and inclusion	TBC	825
	# of people reached through safe spaces at Community Health Mobilization Points	TBC	7,435

- Monitoring the situation to see if surge support required
- Established distribution criteria that prioritize the most vulnerable group such as women, elderly, people with disability, child-headed households and orphans



## Risk Reduction, climate adaptation and Recovery

Female > 18:	Female < 18:
20,800	22,400
Male > 18:	Male < 18:
16,000	20,800

**Objective:** *Communities in high-risk areas are prepared for and able to respond to disaster*

	Indicator	Actual	Target
<b>Key indicators:</b>	# of people reached through DRR and Climate Change Adaptation activities	TBC	80,000
	# of people reached through Early Warning messages	TBC	21,500
	# of local disaster management committees trained and equipped for disaster risk mitigation and response	TBC	30
	# of CVM volunteers and staff trained in preparedness and response to disasters	TBC	80
	# of boats for search and rescue procured	TBC	5
	# of people reached with search and rescue activities	625	1,000

	# of people reached through climate change awareness campaigns	TBC	42,500
<ul style="list-style-type: none"> <li>• Early warning messaging for cyclones and floods including preparedness actions and evacuation centres</li> <li>• Assist the CVM team in response plan development and operations through mobilization of IFRC Disaster Management Coordinator</li> <li>• Search and rescue and boat transport for 625 people</li> </ul>			

## Enabling approaches



### National Society Strengthening

<b>Objective:</b>	<i>Communities in high-risk areas are prepared for and able to respond to disaster</i>		
<b>Key indicators:</b>	<b>Indicator</b>	<b>Actual</b>	<b>Target</b>
	# of volunteers insured	400	800
	National Society has elaborated a new four-year strategy	TBC	Yes
	# of digitalization systems implemented to improve finance management, logistics and volunteer management	TBC	1
	Communication and coordination within the National Society has improved	TBC	Yes
<ul style="list-style-type: none"> <li>• A total of 400 volunteers have been fully insured under the operation so far to lead activities in community mobilization, early warning messaging, rapid needs assessments, and assistance to the distributions</li> </ul>			



### Coordination and Partnerships

<b>Objective:</b>	<i>Strengthen Coordination and Partnerships within the Movement and with relevant external actors</i>		
<b>Key indicators:</b>	<b>Indicator</b>	<b>Actual</b>	<b>Target</b>
	Number of new CVM partnerships formed	TBC	2
	Number of Movement Coordination Agreements formed	TBC	1

# of external partnership supporting the NS in the response	TBC	2
# regular coordination meetings ensuring alignment and coordination with all Movement partners	TBC	12
# of CVM staff trained in partnership development	TBC	50

### Coordination

- IFRC has organized regular Movement Coordination meetings
- CVM provides daily updates through their emergency taskforce meetings (GODE) to partners
- IFRC has organized surge support for Operations, Communications, Shelter Cluster Coordination, Logistics and Information Management

### Communications

- Over 50 media and social media mentions of the IFRC/Red Cross linked to Tropical Cyclone Gombe
- Strong media coverage from BBC News,
- BBC Interview with Nancy Kordouli (IFRC)
- Daily updates from @IFRCAfrica and @IFRC following the tropical cyclone
- Key messages (Mozambique) prepared and published on IFRC Newswire
- Deployment of an IFRC Comms Officer from Pretoria to Mozambique, ahead of the landfall
- Several social media posts across IFRC global channels that have accumulated over 5,000 impressions.

#### Media coverage and stories

- BBC – Interview with Nancy Kordouli (IFRC) <https://www.youtube.com/watch?v=NRWmlzNGHko&t=52s>
- Floodlist- <https://floodlist.com/africa/malawi-cyclone-gombe-floods-march-2022>
- Independent- <https://www.independent.co.uk/tv/climate/cyclone-gombe-mozambique-tornado-death-b2034506.html>
- Nyasa Times - <https://www.nyasatimes.com/chikuli-bridge-along-mugabe-highway-rendered-impassable-travelers-advised-to-use-thyolo-road/>
- UNHCR-<https://data2.unhcr.org/en/news/11350?msclkid=2a782406a5ca11ec87b8f756ddac4bc8>

The Nation- <https://www.mwnation.com/storm-hits-hard/>



## Secretariat Services

<b>Objective:</b>	<i>Strengthen Secretariat services</i>		
<b>Key indicators:</b>	<b>Indicator</b>	<b>Actual</b>	<b>Target</b>
	# of surge and temporarily outside support of IFRC	2	4
	# of IFRC national staff supporting CVM through capacity building	10	10

### Surge

Profile	Status	Deploying office	Name
Shelter Cluster Coordinator	Deployed-6 Weeks	Australian Red Cross	Francisco Monteiro

Operations Manager	Done (9 Feb to 7 Mar)	Niger Red Cross	Dorien Dolman
Developing Ops Manager	Pending		
<b>Cluster/Regional deployments</b>			
Communications Officer	Deployed-6 Weeks	Pretoria Cluster	Robyn Doyle
Logistics Officer	Pending (20 Mar)-6 weeks	IFRC Regional Office	Carren Auma Oyayo

#### ***Logistics: Procurement***

- Transport arranged for flood EAP NFIs from Gaza to Zambezia. There were delays due to road conditions and flooding boats were also used. This led to a delay and the goods were not delivered within the timeline for early action. Thus, the distribution was made as part of emergency response.
- On 11th March IFRC hired 3 trucks (one 10 ton and two 15 ton) to move goods from Chibuto to Maganja da Costa,
- On 18th March IFRC rented a minibus (15 seats) for the mobility of 15 volunteers for distribution on Ilha de Moçambique

#### ***Logistics: Fleet and Warehousing***

- IFRC vehicle support to Zambezia and Nampula (2 vehicles and drivers)

#### ***Finance***

- The Emergency Appeal MDRMZ016 remains underfunded, whilst families are in dire needs, needing immediate help.
- 178,835 CHF from Canadian Red Cross for the appeal
- 30,000 CHF confirmed from the Republic of Slovenia for the appeal
- Donation of NFIs transport by Coca Cola is being discussed
- Fundraising activities in country continue.

#### ***Information Management***

- Ongoing data collection in partnership with INGD for the Rapid Needs Assessment
- Surge support requested

#### ***Security***

- Briefings prepared for Surge personnel upon arrival
- One minor security incident led to delay of distribution on Ilha de Moçambique, Nampula. This was resolved via alternative operational strategy adopted.



## Community Engagement and Accountability

<b>Objective:</b>	<i>Have the communities at the center throughout the project implementation by involvement of community leaders, RCCE sensibilization activities and establishment of feedback collection systems</i>		
<b>Key indicators:</b>	<b>Indicator</b>	<b>Actual</b>	<b>Target</b>
	% of queries / feedbacks received through the feedback mechanisms established that were responded to	TBC	80%
	# of community leaders trained and involved in the response	TBC	200
	# of CVM staff and volunteers trained on CEA and RCCE and involved in the response	TBC	825
	% of operational decisions made based on community feedback	TBC	100%
<ul style="list-style-type: none"> <li>The process of data collection for the rapid needs assessment, by CVM volunteers included community engagement and the assistance of local leadership to identify and register the needs within the affected communities and to identify the most vulnerable persons for distributions</li> <li>NFI distributions in Nampula and Zambezia required a community mobilization and engagement that was performed by volunteers present in affected communities.</li> </ul>			



## Shelter Cluster Coordination

<b>Objective:</b>	<i>Promote coordination among humanitarian and government actors to meet shelter needs throughout the affected area and prepare for future events</i>		
<b>Key indicators:</b>	<b>Indicator</b>	<b>Actual</b>	<b>Targets</b>
	# of active shelter actors engaging with SC and participating in coordination meetings	TBC	15
	A shelter response strategy in place, agreed upon by all shelter actors	TBC	1
	Cluster coordination capacity and information management system in place to monitor and improve the quality of the shelter response and eliminate duplication and gaps.	TBC	1
<ul style="list-style-type: none"> <li>IFRC Shelter Cluster Coordinator mobilized in-country to support CVM's role as co-lead of Shelter Cluster</li> <li>IOM is planning to deliver 3,000 shelter kits through INGD to assist IDPs in Corrane resettlement center in Meconta Nampula (for IDPs from Cabo Delgado).</li> </ul>			

## **C. FUNDING**

Of the \$5.5 million CHF requested for the operation, the appeal is 23.5% funded, with the majority of funding for the response to TC Eloise in 2021.

# Emergency Appeal

## FINAL FINANCIAL REPORT

Selected Parameters			
Reporting Timeframe	2021/01-2022/3	Operation	MDRMZ016
Budget Timeframe	2021-2023	Budget	APPROVED

Prepared on 24 May 2022

All figures are in Swiss Francs (CHF)

## MDRMZ016 - Mozambique, Africa 2021-22 Floods and Cyclones

Operating Timeframe: 23 Jan 2021 to 31 Jan 2023; appeal launch date: 28 Jan 2021

### I. Emergency Appeal Funding Requirements

Thematic Area Code	Requirements CHF
AOF1 - Disaster risk reduction	729,000
AOF2 - Shelter	1,877,000
AOF3 - Livelihoods and basic needs	626,000
AOF4 - Health	527,000
AOF5 - Water, sanitation and hygiene	524,000
AOF6 - Protection, Gender & Inclusion	47,000
AOF7 - Migration	0
SFI1 - Strengthen National Societies	617,000
SFI2 - Effective international disaster management	35,000
SFI3 - Influence others as leading strategic partners	27,000
SFI4 - Ensure a strong IFRC	491,000
<b>Total Funding Requirements</b>	<b>5,500,000</b>
<b>Donor Response* as per 24 May 2022</b>	<b>1,292,293</b>
<b>Appeal Coverage</b>	<b>23.50%</b>

### II. IFRC Operating Budget Implementation

Thematic Area Code	Budget	Expenditure	Variance
AOF1 - Disaster risk reduction	7,132	24,335	-17,203
AOF2 - Shelter	1,239,077	978,657	260,420
AOF3 - Livelihoods and basic needs	66,645	1,624	65,021
AOF4 - Health	33,601	43,341	-9,740
AOF5 - Water, sanitation and hygiene	25,304	18,822	6,482
AOF6 - Protection, Gender & Inclusion	1,086	258	828
AOF7 - Migration	0	0	0
SFI1 - Strengthen National Societies	90,623	7,536	83,087
SFI2 - Effective international disaster management	108,756	88,051	20,705
SFI3 - Influence others as leading strategic partners	29,355	29,113	242
SFI4 - Ensure a strong IFRC	132,026	45,623	86,403
<b>Grand Total</b>	<b>1,733,605</b>	<b>1,237,360</b>	<b>496,245</b>

### III. Operating Movement & Closing Balance per 2022/03

Opening Balance	0
Income (includes outstanding DREF Loan per IV.)	1,782,004
Expenditure	-1,237,360
<b>Closing Balance</b>	<b>544,644</b>
Deferred Income	0
Funds Available	544,644

### IV. DREF Loan

* not included in Donor Response	Loan :	859,689	Reimbursed :	359,689	<b>Outstanding :</b>	<b>500,000</b>
----------------------------------	--------	---------	--------------	---------	----------------------	----------------

# Emergency Appeal

## FINAL FINANCIAL REPORT

Selected Parameters			
Reporting Timeframe	2021/01-2022/3	Operation	MDRMZ016
Budget Timeframe	2021-2023	Budget	APPROVED

Prepared on 24 May 2022

All figures are in Swiss Francs (CHF)

### MDRMZ016 - Mozambique, Africa 2021-22 Floods and Cyclones

Operating Timeframe: 23 Jan 2021 to 31 Jan 2023; appeal launch date: 28 Jan 2021

#### V. Contributions by Donor and Other Income

Opening Balance							0
Income Type	Cash	InKind Goods	InKind Personnel	Other Income	TOTAL	Deferred Income	
American Red Cross	550,555				550,555		
DREF Allocations				500,000	500,000		
European Commission - DG ECHO	216,306				216,306		
Japanese Red Cross Society	42,880				42,880		
Other	82				82		
Red Cross of Monaco	16,452				16,452		
The Canadian Red Cross Society (from Canadian Gov	178,835				178,835		
The Netherlands Red Cross (from Netherlands Govern	276,894				276,894		
<b>Total Contributions and Other Income</b>	<b>1,282,004</b>	<b>0</b>	<b>0</b>	<b>500,000</b>	<b>1,782,004</b>	<b>0</b>	
<b>Total Income and Deferred Income</b>					<b>1,782,004</b>	<b>0</b>	

## Contact information

For further information, specifically related to this operation please contact:

### In the Mozambican National Society

- Maria Cristina Uamusse, Secretary General, [Cristina.uamusse@redcross.org.mz](mailto:Cristina.uamusse@redcross.org.mz), +258 84 566 8173
- Ilídio Nhatuve, Programs Director, [ilidio.nhatuve@redcross.org.mz](mailto:ilidio.nhatuve@redcross.org.mz), +258 82 099 7169
- Júlio Armando Mondlane, National PMER Coordinator, [julio.mondlane@redcross.org.mz](mailto:julio.mondlane@redcross.org.mz), +258 82 178 4723

### In the IFRC Country Cluster Delegation

- Naemi Heita, Acting Head of Country Delegation, [naemi.heita@ifrc.org](mailto:naemi.heita@ifrc.org), +258 87 681 0013; +27 82 926 4448
- Nancy Kordouli, Operations and Program Manager, [nancy.kordouli@ifrc.org](mailto:nancy.kordouli@ifrc.org) +258 87 555 6329

### In the IFRC Regional Office for Africa, Nairobi

- Michael Charles, Regional Head of Health and Disaster, Climate and Crisis Unit: Phone +27 (0) 83 413 2988; Email [michael.charles@ifrc.org](mailto:michael.charles@ifrc.org)
- Adesh Tripathee, Head of DCPRR, [adesh.tripathee@ifrc.org](mailto:adesh.tripathee@ifrc.org), +254 73 106 7489

### For IFRC Resource Mobilization and Pledges support:

- Didintle MONNAKGOTLA, Partnerships and Resource Development Coordinator  
[Didintle.MONNAKGOTLA@ifrc.org](mailto:Didintle.MONNAKGOTLA@ifrc.org) +27 66 426 9123

### For In-Kind donations and Mobilization table support:

- Rishi Ramrakha, Head of Africa Regional Logistics Unit, [rishi.ramrakha@ifrc.org](mailto:rishi.ramrakha@ifrc.org), +254 733 888 022

#### Reference

Click here for:

- [Link to IFRC Emergency landing page](#)

## How we work

All IFRC assistance seeks to adhere the **Code of Conduct** for the International Red Cross and Red Crescent Movement and Non-Governmental Organizations (NGO's) in Disaster Relief, the **Humanitarian Charter and Minimum Standards in Humanitarian Response (Sphere)** in delivering assistance to the most vulnerable, to **Principles of Humanitarian Action** and **IFRC policies and procedures**. The IFRC's vision is to inspire, encourage, facilitate and promote at all times all forms of humanitarian activities by National Societies, with a view to preventing and alleviating human suffering, and thereby contributing to the maintenance and promotion of human dignity and peace in the world.