



Emergency Plan of Action (EPoA)

Bangladesh: Flash Flood



DREF Operation	MDRBD028	Glide n°:	FL-2022-000217-BGD
Date of issue:	25/05/2022	Expected timeframe:	4 months
		Expected end date:	30/09/2022
Category allocated to the of the disaster or crisis: Yellow			
DREF allocated: CHF 404,434			
Total number of people affected:	2 million	Number of people to be assisted:	20,000
Provinces affected:	Sylhet	District targeted:	Sylhet, Sunamganj
Host National Society presence (n° of volunteers, staff, branches): Bangladesh Red Crescent Society (BDRCS) has 68 units and countrywide volunteers' networks. BDRCS has more than 82,000 members, 8,000 Red Crescent volunteers and 300 staff. The National Society is well known and respected in the country and works closely with the Government. The role of the BDRCS is well articulated in the Government's Standing Orders on Disaster (SOD) which is the main guiding and regulating tool for disaster response and management in Bangladesh.			
Red Cross Red Crescent Movement partners actively involved in the operation: American Red Cross, British Red Cross, Canadian Red Cross, Danish Red Cross, German Red Cross, Japanese Red Cross Society, Qatar Red Crescent, Swedish Red Cross, Swiss Red Cross, Turkish Red Crescent, and the International Committee of the Red Cross (ICRC).			
Other partner organizations actively involved in the operation: Government of Bangladesh (GoB), UN Resident Coordinator (RC) office, UN agencies, INGOs and NGOs.			

A. Situation analysis

Description of the disaster

Due to continuous rains in India's Meghalaya district since 17 May 2022 and the onrush of upstream hilly waters, the low-lying areas of Sylhet and Sunamganj district of Bangladesh including the cities were inundated. According to the national "Need Assessment Working Group (NAWG)" situation analysis report¹ dated 21 May 2022, approximately two million people have been impacted due to flood that is the worst in nearly two decades². A total of 133 villages of six unions at Companiganj Upazila of Sylhet district with an estimated 46,500 individuals have been affected by the ongoing flood³. Moreover, about 72,300 people of 10 unions have been affected by the flash flood in Kanaighat Upazila of Sylhet district with 329 houses damaged (268 partial and 61 fully damaged). Besides, about 1,137 hectares of agricultural land and 205 sq. km area have been inundated. Meanwhile, in Goainghat Upazila of Sylhet district, about 69,165 people of 10 unions have been affected by this flash flood with 396 houses damaged (345 partial and 51 fully damaged). Many areas in the Sylhet have been inundated and vast areas in Kanaighat, Zakiganj, Golapganj, Gowainghat and Fenchuganj Upazilas flooded due to embankment breaches on various points of the Surma river. Furthermore, the road link of Sylhet with Kanaighat and Gowainghat had been cut.

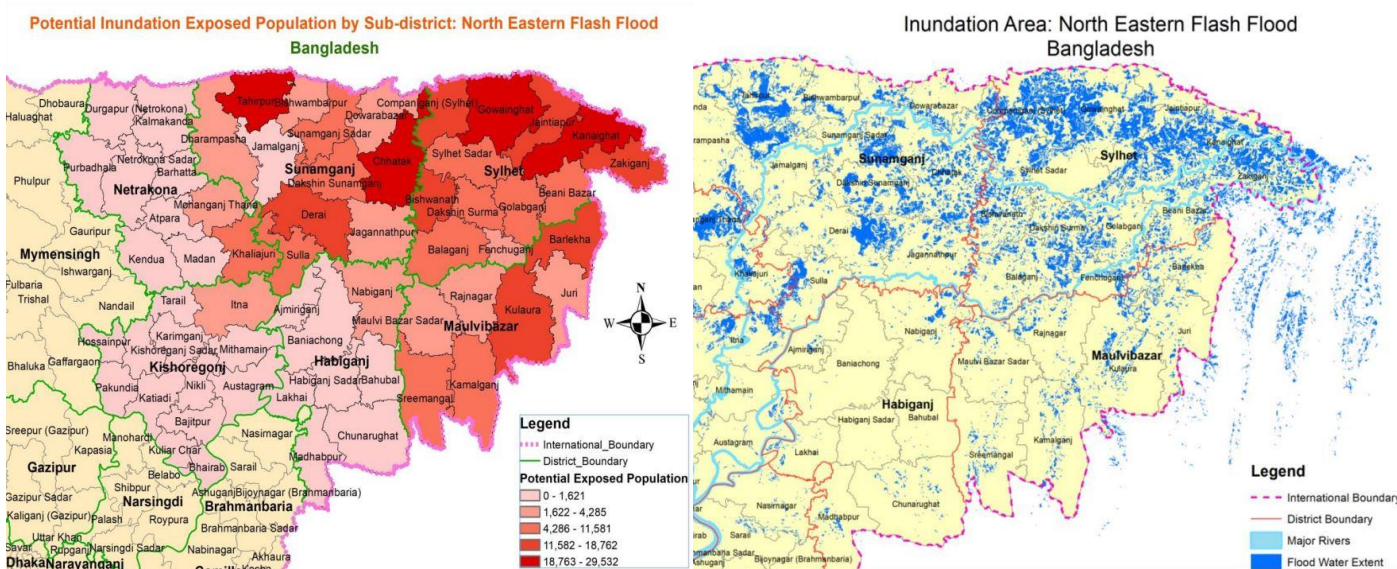
Around 150,000 families in Sylhet and districts have Sunamganj been without power since 17 May 2022 due to the submergence of power stations. More than 873 educational institutions, mostly government primary schools, have been closed due to severe flooding in these two districts. Department of Agricultural Extension's district office confirmed that

¹ <https://www.humanitarianresponse.info/en/operations/bangladesh/document/20220521flashfloodsav3>

² <https://www.arabnews.com/node/2086971/world>

³ situation update by UNO office, Companiganj Sylhet

the flood had already destroyed 1,421 hectares of seedbed, 1,704 hectares of Boro rice land and 13,340 hectares of summer vegetables. According to the Deputy Director of Sunamganj Agricultural Department, 500 hectares of Boro rice land have gone underwater in Sunamganj Sadar, Tahirpur, Chhatak and Doarabazar Upazilas, with estimated damage worth Bangladeshi Taka (BDT) 50 million (CHF 588,235 approx.). For much of the area concerned, the destroyed Boro rice crop was the only crop of the year, leaving the affected people with little coping mechanisms. Moreover, three children aged under 12 years died due to lightning while helping their parents in the field to save their crops. Also, 96 people have been affected by waterborne disease reportedly from the Sylhet Civil Surgeon's Office. As of 19 May, the Department of Public Health Engineering (DPHE) reported that 370 tube wells and 3,659 toilets have been affected.

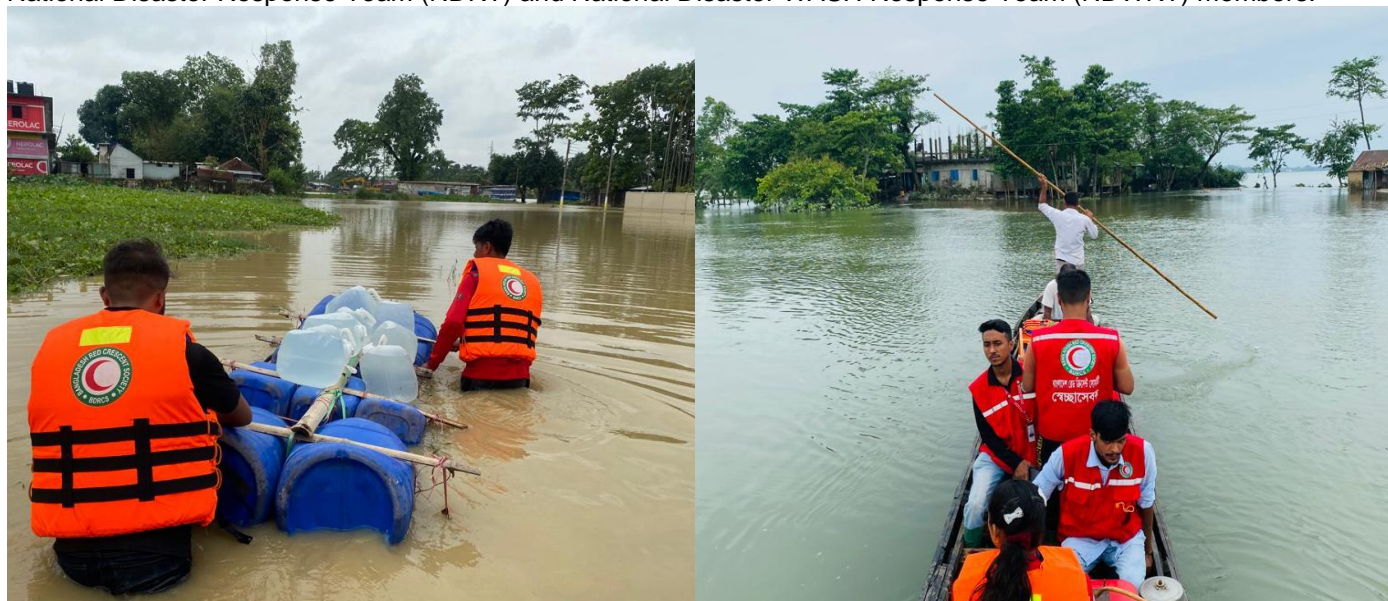


Inundation areas, Source-NAWG

Summary of the current response

Overview of Implementing National Society Response Action

BDRCS has been closely monitoring the situation since the beginning of the flash flood and coordinating with concern units and the government for a response. BDRCS is regularly updating IFRC and in-country participating national societies about the flash flood situation. More than 250 volunteers along with the staff are responding in Sylhet and Sunamganj districts. Furthermore, BDRCS volunteers and staff have been regularly sharing updated information with the central Emergency Operation Center (EOC). BDRCS has already updated its contingency stock and alerted its National Disaster Response Team (NDRT) and National Disaster WASH Response Team (NDWRT) members.



BDRCS volunteers are providing safe drinking water as lifesaving support in the affected communities (Photo: BDRCS)

Based on available information through the central EOC, BDRCS allocated BDT 200,000 (CHF 2,350 approx.) for Sylhet unit and BDT 100,000 (CHF 1,150 approx.) for Sunamganj Unit to provide dry-food assistance among the flash flood-affected households. Additionally, BDRCS also allocated a total of 35,000 water purification tablets; 1,125 jerry cans and 500 hygiene parcels for Sylhet and Sunamganj units to meet the emergency need of the affected people. BDRCS also mobilized two water purification units along with staff and NDWRT members to provide safe drinking water.

As of 22 May 2022, BDRCS has taken the following actions:

District	Actions
Sylhet	<ul style="list-style-type: none"> • Distributed emergency dry food packages among 4,000 people • Distributed 20,000 litres of drinking water among 2,000 households • Distributed 300 hygiene parcels and 700 jerry cans • Distribution of water purification tablets- on-going
Sunamganj	<ul style="list-style-type: none"> • Distribution of food package⁴ Sunamganj – ongoing and will be completed by 24 May • Distribution of 200 hygiene parcels and 450 jerry cans - on-going

Considering the flash flood situation and its impact, BDRCS requested IFRC for a DREF allocation on 22 May 2022 to provide lifesaving support among the flash flood-affected people. By utilizing this DREF allocation, BDRCS aims to support 20,000 people in terms of livelihood and basic needs, WASH and health.

BDRCS has extensive experience in managing emergency operations. In last ten years, BDRCS implemented 12 emergency appeal operations and six DREF operations with the support of IFRC and PNSs. BDRCS designed this DREF operation's strategy considering the lessons learned from previous flood operations and evaluation findings. For example, the use of mobile data collection solutions and the collection of sex, age and disability disaggregated data have been found good practices in earlier operations, and the use of cash modality has been continuously growing and recommended. The use of NDRTs has also been found helpful and much appreciated by local units.

Overview of Red Cross Red Crescent Movement Actions in country

IFRC Bangladesh delegation along with the in-country participating national societies (PNSs) has been closely monitoring the situation and supporting BDRCS to update the contingency stock, issue situation updates and develop the response strategy. With IFRC and PNSs support, BDRCS has been maintaining its contingency stock for immediate response and already mobilized relief items like hygiene parcels, jerry cans etc.

Danish Red Cross is extending its support bilaterally to BDRCS to conduct training and deployment of volunteers to provide basic psychosocial support services to affected individuals, families and communities in both districts. Discussions with other PNS are ongoing.

At the same time, IFRC is closely coordinating and collaborating with the relevant clusters and working groups. As convener of the shelter cluster, IFRC has been updating members about the flood situation and coordinating with its members for potential intervention. In addition to that IFRC is closely working with the national NAWG, Food security cluster, WASH cluster, health cluster etc.

Based on BDRCS request, this DREF of CHF 404,434 aims to assist most vulnerable affected people in terms of safe drinking water, health support and multipurpose cash assistance.



Distribution of relief item to affected people (Photo: BDRCS)

Overview of other actors' actions in country

In Sunamganj District Administration allocated 140 Metric Ton rice, BDT 1,200,000 G.R. Cash (CHF 14,000 approx.) and 2,000 dry food packages. Also, 56 flood shelters have been prepared. In Sylhet 326 flood shelters have been prepared and 7,439 people are staying in 95 flood shelters as of May 19, 2022. Besides, 199 flood shelters have been equipped with WASH facilities and the DPHE of Sylhet raised 35 tube wells and disinfected another 31 damaged tube wells.

⁴ Each family will receive, rice 5kg, pulse 5 kg, oil 0.5 litre and potato 1kg

Needs analysis, targeting, scenario planning and risk assessment

Needs analysis

The flash floods lead to the destruction of crops on farms causing financial loss to farmers. This implies that farmers' income level is reduced hence reducing their purchasing power and thus low living standards. The flood in the northeast region, triggered by heavy rainfall breached many parts of the embankments hence damaging standing crops (rice) affecting potential harvest income and resulting in the loss of seasonal income. The flood has not only damaged the Boro crop, which is the only seasonal rice crop that farmers grow annually but also has affected the overall livelihoods of *haor*⁵ dwellers. Most of the people of this basin area are poor and agriculture is their main occupation. As agricultural land in this region remains underwater for a large part of the year, there is only one cropping season in the *haors* and this early-onset flooding destroyed the 2022 crop of Boro rice (the primary crop) which creates an adverse impact on the socio-economic life of the *haor* inhabitants. The poor inhabitants' coping strategies are limited as they lost their housing, crops, and valuable assets at the first instances of the flash flood. Due to occupation loss, resource damage and income instability, *haor* inhabitant's direct economic loss frequently results in additional indirect property losses, which eventually poses a vicious circle of debt and poverty.⁶

These flash floods caused devastation also in the city and sub-city areas, so the impact on the livelihood is not only on the farmers and daily labourers of the farmlands but also on the daily wage earners of the city and sub-city areas. So, the impact is higher than any previous flash floods in these areas. This was also highlighted in the NAWG on 22 May where stakeholders from different organizations were present. As per the primary findings of the BDRCS local units, markets in affected areas are still functioning maintaining a minimum supply chain to ensure basic essential items are available.

WASH is one of the top priority needs in the affected communities, particularly in Sylhet and Sunamganj districts. According to the BDRCS rapid assessment, it was found that water supply and sanitation have been disrupted due to the flash flood. Currently, in flood-affected areas, there is a huge need for safe drinking water. People have been seeking support from the humanitarian agencies in terms of drinking water, and safe and easily accessible sanitation facilities including women, girls, and persons with disabilities.

A detailed assessment is ongoing in the affected areas. The early indication suggests an increase in cases of diarrhoeal diseases, skin infections, etc. So far, 43 cases of acute watery diarrhoea have been reported and are likely to increase once the water starts receding. The health needs have increased in the affected communities. As the population is slowly recovering from the COVID-19 pandemic the mental health concerns among the affected population are high (feeling stressed and worried) because of the flash flood.

As of 19 May, over 7,400 people are in evacuation shelters. Overcrowding is sometimes experienced at evacuation/flood shelter centres, compelling families to share spaces, which raises protection concerns linked to shelter and may increase risks of violence or abuse. Currently, there is limited information about possible migrants and protection related concerns.

Considering limited available information, the NAWG is going to conduct an assessment from 24 May with the support of its members. Accordingly, BDRCS and IFRC are actively coordinating and supporting the NAWG to get more detailed information about the affected communities' priority needs. NAWG is aiming to share assessment findings by 29 May 2022.

Targeting

BDRCS and IFRC in coordination with the government, UN agencies, INGOs, NGOs and relevant stakeholders target Sylhet and Sunamganj districts as geographical areas for this operation. Based on available information from BDRCS needs assessment and coordination with implementing humanitarian agencies, BDRCS will target the 12,500 most affected people in Sylhet district and 7,500 people in Sunamganj district.

Selection of targeted people will be done based on the needs and specific protection issues giving priority to the most marginalized groups, ensuring their dignity, access, participation, and safety. This includes:

- Displaced people living in temporary shelters or makeshift houses,
- Elderly persons
- Persons with disabilities (PWD),
- Children including adolescents, separated children and unaccompanied children

⁵ *Haor* is low-lying wetland in Bangladesh. Based on elevation from Mean Sea Level (MSL), lands that are about 7-8 meters below MSL and are flooded for 7-8 months are classified as *haor* ([The Dhaka University Journal of Earth and Environmental Sciences, Vol. 8, 2019](#))

⁶ [The Dhaka University Journal of Earth and Environmental Sciences, Vol. 8, 2019](#)

- Marginal income farmers and others,
- Female-headed households
- Lactating mothers, pregnant women, etc.

The operation will include the Washington Group Short Set of Questions (WGQ) on disability to identify the PWD at the assessment stage and during data collection through the operations.

To finalize the targeted people list, BDRCS will coordinate with the social safety net programme of the Government of Bangladesh. Beneficiary selection will be completed through the household assessment using a mobile application (kobo collect) and a dedicated IM team will provide technical support in terms of data cleaning and validation. Further details in terms of targeting per sector can be found in the operational strategy.

Scenario planning

Scenario	Humanitarian consequence	Potential Response
Most likely scenario	Water inundation will remain for 10 to 15 days when people will take refuge in makeshift shelters with minimum to no access to food and water. Once water will start receding, people will start returning to their homes. The situation entails poor health and hygiene conditions with limited access to basic health and hygiene facilities. Emergency needs exist in terms of food, emergency shelter, health, WASH and cash assistance.	This DREF will be utilized for the immediate needs of the most vulnerable affected in terms of drinking water, sanitation and health. BDRCS will utilize the existing contingency stock for immediate response.
Worst Scenario	The inundation time may prolong as the monsoon rain continues both in the local catchment area as well as in the upper catchment areas in India. Another spell of a flash flood may hit the same geographical area and some people remain displaced for a longer period and greater recovery needs arise. In the coming weeks, the central-northern part of the country may experience flooding. If that happens, it would require attention for emergency response.	Considering the scale of damage and impact, BDRCS might request IFRC to scale up the operation. BDRCS will engage in more domestic fundraising, and bilateral partnerships with other partners to cover the gaps. More collaboration with the local and national governments to see the complementarity and optimum utilization of resources.

Operation Risk Assessment

Apart from the difficulty of road access in some affected areas and mosquito and water-borne diseases, debris and vehicle accidents, there are no major threats in Bangladesh which may directly interrupt the implementation of operational activities. However, to mitigate the security risks, adequate measures will be put in place. There is already a field implementation guide for BDRCS branches, and volunteers considering the current COVID context which will be followed for this DREF implementation to minimize risk. The IFRC country delegation has updated its framework on ABC-actioning business continuity, which will help to minimize the risk to sustain critical humanitarian needs.

In addition, both BDRCS and IFRC have a 'Zero Tolerance' policy against corruption, discrimination against gender or race, sexual harassment, sexual abuse, and bullying and as a mitigating measure of the above risk, staff members/volunteers will be oriented accordingly with the IFRC policy and guidelines. A Child Safeguarding Risk Analysis will also be carried out for the operation, per IFRC standards.

B. Operational strategy

Overall Operational objective

The overall objective of the operation is for BDRCS to meet the immediate needs of 20,000 people affected by the flash floods through the provision of safe drinking water, hygiene promotion, health support and multipurpose cash assistance. The planned actions under this DREF will help the affected communities to alleviate their suffering.

Summary of planned key activities:

Sector	Activities	Target
Livelihood and basic needs	Provide multi-purpose cash grant (MPCG ⁷) assistance through financial service provider	20,000 people (4,000 HHs)
WASH	Conduct mass awareness on hygiene promotion	20,000 people
	Provide safe drinking water through mobilizing water treatment units (including distribution of jerry cans)	4 units
	Disinfection of contaminated water points	500 units
	Construct emergency latrines	100 units
	Provide hygiene parcels	5,000 people (1,000 HHs)
Health	Provide emergency health service through mobile medical team mobilization	5,000 people
	Provide Psychosocial support (PSS) ⁸ to affected people, volunteers and staff (through DRC support)	200 people
PGI	Provide dignity kits	1,000 HHs
	Provide cash or in-kind assistance to address the special needs of people with disabilities.	100 people

Decentralization of response

The BDRCS response operation will be carried out in a decentralized fashion by the respective affected branches in close coordination with Disaster Response (DR) Department. BDRCS central Emergency Operation Centre (EOC) will be led by the disaster response department and include colleagues from DRM, DR, PMER, IM, CEA, Finance, Logistic, youth and volunteer units and others as required. BDRCS units will coordinate with central EOC and manage the operational activities in their respective areas including updating contingency stocks, sharing updated damage and need information, mobilization of resources, distribution update and operational challenges.

Coordination

BDRCS and IFRC will keep close coordination and share informal situation/progress updates with in-country partners regularly. Similarly, BDRCS and IFRC will keep close coordination with the Government of Bangladesh, UN agencies, INGOs, NGOs and Humanitarian Coordination Task Team (HCTT), other clusters, and working groups as needed.

Monthly IFRC wide coordination meetings will be organized to provide operational updates, which will include information about progress against targets, expenditure against forecast, and challenges and will highlight any potential delays. Engagement of PNSs will be ensured in the planning, design, fundraising, and monitoring of the DREF operation by forming a joint task force and this task force will update the operational coordination team. Additionally, BDRCS and IFRC will ensure the engagement of finance, logistics, planning, monitoring, evaluation, and reporting (PMER) and other relevant departments/units in the planning process of the operations.



Emergency coordination meeting with BDRCS and IFRC for launching DREF in BDRCS EoC (Photo: IFRC)

⁷ https://fscluster.org/sites/default/files/documents/guidelines_on_mpcg_final_draft_march_6_2018-1.pdf

⁸ Danish Red Cross is supporting BDRCS bilaterally to provide PSS support.

Human Resource (HR) mobilization

BDRCS and IFRC will ensure dedicated human resources to manage this operation to ensure timely delivery of humanitarian assistance. If there is a gap in terms of HR to support the operation identified, the human resources capacities available with IFRC and the in-country PNSs will be utilized as required and appropriate. BDRCS will also engage NDRT and NDWRT members as required for implementing the operational activities.

Cash and Voucher Assistance (CVA)

CVA will be a key approach for assistance throughout the operation. BDRCS will implement the CVA activities according to the revised Cash Standard Operating Procedure (SOP). BDRCS has established a CVA cell to provide technical support in terms of the implementation of CVA activities in emergency operations. Currently, 16 staff are trained in Practical in Emergency Cash Transfer (PECT), and more than 200 staff and volunteers received CVA training and will be deployed in the field operation.

MPCG package will be designed based on the national cash working group recommendation and distribution should be completed within an emergency timeframe. The MPCG amount of 4,500 BDT (55 CHF approx.) is 75 per cent of the total minimum expenditure basket (MEB) as per the Cash Working Group Guidance. BDRCS with the support of IFRC and in-country PNSs will conduct the Post Distribution Monitoring (PDM) of CVA and share the PDM findings.

Communications

Maintaining a steady flow of information and communication between operations in the field and major stakeholders including media and public, Movement Partners and donors is crucial for any operation. The IFRC Bangladesh Delegation communications team, supported by the regional office, works closely with BDRCS communications team to ensure that the information flow is steady, effective, and timely. Since the onset of the crisis, the teams have been gathering communication content such as photos and videos on the disaster situation and BDRCS activities on the ground and sharing them through various platforms. BDRCS already started to share the activities through their social media channels on [Facebook](#) and [Twitter](#).

Throughout the operation, IFRC communications teams, both in the country and in the region, will provide support to BDRCS communications efforts as needed, including media monitoring, media relations, content development and capacity-building. A regular flow of information will also be maintained between the community people, respective BDRCS district units and departments at NHQ to maintain transparency and address the immediate needs of the most vulnerable people.

BDRCS will deploy dedicated communications personnel from its trained volunteer pool to gather high-quality audio-visual content from the ground which can be used on different platforms. If needed, external communications resources will be hired and deployed for content gathering. Furthermore, BDRCS and IFRC will take the initiatives to document this operation. Best practices will be captured, and efforts will be made to record case studies as the operation progresses.

Planning, Monitoring, Evaluation and Reporting (PMER)

PMER activities will be rolled out to ensure the quality of implementation throughout the operational management cycle. BDRCS will be responsible for the day-to-day monitoring of the operation, primarily at the branch/unit level. Using contextualized tools and considering the COVID-19 situation, BDRCS/IFRC joint monitoring teams, including the NDRT, will visit operation sites regularly to measure the progress of the implementation and provide support for the better accomplishment of the proposed actions in the intervention areas. The IM team will help in analysing the data and come up with the database based on the criteria set for the multipurpose cash grant.

To ensure quality programming toward reaching the most vulnerable people, a door-to-door household assessment will be conducted through assessment tools to select the most affected people based on the set criteria. Regular monitoring of different activities will be done through deployed NDRT members and staff. Exit survey and Post Distribution Monitoring (PDM) will be conducted to get feedback from the end-users and to monitor the impact of the intervention. A workshop will be organized at the end of the operation to capture the best practices and lessons learned during the operation.

Community engagement and accountability (CEA)

Community feedback mechanisms will be integrated into the operation to ensure that affected populations have access to timely and accurate information on the nature and scope of services provided by BDRCS. The participation and feedback mechanism will ensure accountability to affected communities and improve the quality of aid and effective service delivery. As only a fraction of affected populations will be targeted, the selection criteria will need to be communicated clearly to the target population and wider communities of different groups through available communication channels – face to face meetings including focus group discussion, community leaders' orientation, etc, so that people will understand the rationale behind targeting and have opportunities to ask questions and share

suggestions about the selection criteria. This will help to prevent any potential tensions/frustrations by those people who do not meet the selection criteria. The existing feedback response mechanism of BDRCS will be in place – such as BDRCS hotline number, feedback email (feedback@bdracs.org) setting up a face-to-face feedback mechanism - feedback desk, information booth, community consultation, meetings, household visits as well as a locally accepted mechanism as preferred by the communities. Prior to providing any assistance, the community people will receive essential information regarding the assistance packages and services. BDRCS already has a hotline number (+88 01811458524) which is used throughout the country. RCY, NDRT members and staff working on the ground will be trained with Frequently Asked Questions (FAQs), to respond to the queries from the communities and stakeholders. CEA orientation for the staff and volunteers in Sylhet and Sunamganj branches of BDRCS will be organized. As per CEA Red Cross Red Crescent (RCRC) international guideline, CEA will be integrated within the programme cycle management (Emergency need assessment, beneficiary selection, during distribution, activities implementation and monitoring stage). BDRCS has already started to disseminate awareness messages through its social media channels – especially through Facebook, which is very popular in the country.

Logistics and supply chain management

Logistics activities aim to effectively manage the supply chain, including local procurement, hiring customs clearing and forwarding, fleet support, and storage at BDRCS warehouses (NHQ in Dhaka, depot based at Chittagong and other district-level warehouses), if needed.

BDRCS has its own transport facilities for distributing the relief materials at the site of the operations. However, if needed, IFRC will support in accordance with the operation's requirements in compliance with IFRC's logistics standards, processes, and procedures. For fleet support, IFRC Bangladesh Delegation will accommodate the requirement within the existing capacity but depending on the requirements, rental vehicles may be hired to support the operation through the existing local framework agreement in place.

In-kind items, such as hygiene parcels, dignity kits, jerry cans etc. are needed for this operation. Local procurement will be conducted by the BDRCS in accordance with IFRC procurement procedures and processes, or if required IFRC logistics will conduct the procurement as per IFRC procurement procedure and process. The relief items which are utilized from the BDRCS disaster preparedness stocks will be replenished through the IFRC Global Humanitarian Services & Supply Chain Management (GHS&SCM) unit in the IFRC Asia Pacific Regional Office in Kuala Lumpur.

Information technology and information management

People in many affected areas are experiencing frequent power cuts, however, mobile internet connection is available. Staff members and volunteers in the field operation will be supported with internet data packages for their smartphones which will enable them to communicate electronically with the BDRCS headquarters and to send reports and pictures in quick time. KOBO based assessments will be carried out electronically through mobile applications on digital tablets or mobile phones. An orientation session on assessments and data protection will be provided to prepare the volunteers using the tablets or mobile phones for assessments.

Security

Taking into account the considerable major threats in Bangladesh which are: increased health risks such as COVID-19, water, food and seasonal mosquito-borne diseases, the difficulty of road access in flood-affected areas, road traffic accidents, sporadic civil unrest due to increased economic/financial tensions in the country and rapidly worsening flood, adequate measures will be taken to ensure the safety and security of all RCRC personnel involved in this operation. This includes, but is not limited to, situation monitoring, regular or ad-hoc security/safety updates and advice, staff, and movement tracking (e.g., via phone or SMS), the security assessment in operation areas, pre-deployment security/safety briefs on the current security context, contingency plans, and the completion of the respective IFRC e-learning courses (i.e., Basic knowledge and prevention measures for responders, Personal Security, Security Management, Volunteer Security). All IFRC staff, and RC/RC staff and volunteers are encouraged, to complete the IFRC Stay Safe 2.0 e-learning courses. The IFRC Country Delegation security team is keeping close coordination with external humanitarian actors in country on the situation, particularly in the flood-affected areas. The security team will also be keeping close coordination with the BDRCS units and local administrations in the operational areas. The National Society's security framework will be applicable throughout the operation to their staff and volunteers. For personnel under IFRC security's responsibility, including surge support and integrated PNS deployed to the area, the existing IFRC country security plan, including security regulations, contingency plans for medical emergencies, relocation and critical incident management will be applicable. Any field missions undertaken by IFRC personnel will be undertaken following the current IFRC travel approval process, current health advisories and business continuity planning (BCP) guidance regarding COVID-19.

C. Detailed Operational Plan



Livelihoods and basic needs

People targeted: 20,000

Male: 50%

Female: 50%

Requirements (CHF): 237,229

Needs analysis: According to the preliminary impacts and needs assessment report by the NAWG, household food security and livelihoods are severely affected due to loss of employment and damage to crops and food stock due to inundation. The irregularity of food intake and skipped/reduced the daily meal to cope with the devastating situation. Limited work opportunities already reducing purchasing capacity of vulnerable households. As per BDRCS local units' primary findings, markets in affected areas are still functioning by maintaining the minimum supply chain to ensure basic essential items are available. BDRCS aims to address above mentioned needs by supporting affected people with emergency dry food (via BDRCS own funding) and MPCG assistance to meet the basic needs within one month, complementing the government GR cash response. BDRCS will coordinate with the local authorities on the people to be selected and the volume of support while carrying out also its detailed analysis of household needs.

Risk analysis:

- Consecutive flash floods since the monsoon season is ongoing
- COVID-19 situation may increase, and movement will be restricted
- Disrupted communication system at the community level due to flash flood impact.

Population to be assisted: 4,000 households will be provided with MPCG assistance. Each household will receive BDT 4,500 (CHF 55) through a financial service provider. BDRCS and IFRC have a framework agreement with the Bangladesh Post Office to disburse the cash assistance among the targeted households.

Programme standards/benchmarks: BDRCS Cash transfer SOP. MPCG will be based on Humanitarian Coordination Task Team (HCTT) led national cash working group recommendations and Sphere Standards.

P&B Output Code	Outcome 1: Communities, especially in disaster and crisis affected areas, restore, and strengthen their livelihoods	% of targeted household that have cash to meet their survival threshold (Target: 100%)																
	Livelihoods and basic needs Output 1.5: Households are provided with multipurpose cash grants to address their basic needs	# of households reached with multipurpose cash grants (Target: 4,000 households)																
	Activities planned	Week	1	2	3	4	5	6	7	8	9	10	11	12	13	14	15	16
AP081	Provide MPCG through financial service provider		x	x	x	x	x	x	x	x	x	x	x	x				
AP081	Post-distribution monitoring				x	x	x	x	x	x	x	x	x	x	x	x	x	x



Health

People targeted: 5,000

Male: 50%

Female: 50%

Requirements (CHF): 28,223

Needs analysis: A detailed assessment is ongoing in the affected areas. The early indication suggests an increase in cases of diarrhoeal diseases, skin infections, etc. So far 43 cases of acute watery diarrhoea have been reported and are likely to increase once the water starts receding. The health needs have increased in the affected communities and BDRCS will be mobilizing mobile health teams to ensure access to primary health care. The population is also reeling from a food and drinking water crisis. It is also anticipated that vector-borne diseases are likely to rise. As the population is slowly recovering from the COVID-19 pandemic the mental health concerns among the affected population are high (feeling stressed and worried) because of the flood.

Risk analysis: Water inundation will remain for 10 to 15 days when people will take refuge in makeshift shelters with minimum to no access to food and water. Once water will start receding, people will start returning to their homes. The situation entails poor health and hygiene conditions with limited access to basic health and hygiene facilities. Also need to consider major threats in Bangladesh which are increased health risks such as COVID-19, water and food and seasonal mosquito-borne diseases. BDRCS will ensure COVID-19 safe protocol while implementing the flood response.

Population to be assisted: BDRCS is targeting approximately 5,000 people across Sylhet and Sunamganj with health and hygiene promotion focusing on reducing the risk of the spread of diarrhoeal diseases, vector-borne diseases like dengue and other communicable diseases. Four mobile medical teams will be deployed to the affected areas throughout the emergency response phase. Along with the health awareness and promotion session, BDRCS will distribute face masks and hand sanitizers to the population with COVID-19 key messages. Danish Red Cross will support BDRCS bilaterally to conduct training and deployment of volunteers to provide basic psychosocial support services to affected individuals, families, and communities.

Programme standards/benchmarks: BDRCS and National (Ministry of Health) standards.

P&B Output Code	Health Outcome 2: The immediate risks to the health of the affected populations are reduced through improved access to medical treatment										# of people reached with health assistance (Target: 5,000)											
	Health Output 2.1: Improved access to health care and emergency health care for the targeted population and communities.										# of mobile medical teams mobilized (target: 4)						# of people reached through health awareness (Target: 5,000)					
	Activities planned	Week	1	2	3	4	5	6	7	8	9	10	11	12	13	14	15	16				
AP022	Provide primary health services through mobile medical teams		x	x	x	x	x	x	x	x												
AP022	Reproduce and distribute IEC materials on diarrhoeal diseases and dengue		x	x	x	x	x	x	x	x												
AP022	Conduct Epidemic Control for volunteer refresher training		x	x	x	x	x	x	x	x												

AP022	Health education focusing on diarrhoeal diseases and the prevention of dengue and other communicable diseases	x	x	x	x	x	x	x	x	x	x	x	x	x	x	x	x	x
AP022	Procure and distribute face mask and hand sanitizer	x	x	x	x	x	x	x	x	x	x	x	x	x	x	x	x	x
P&B Output Code	Health Outcome 6: The psychosocial impacts of the emergency are lessened	# of people reached through psychosocial support activities (DRC will support it bilaterally)																
	Health Output 6.1: Psychosocial support provided to the target population as well as to RCRC volunteers and staff	# of people who received PSS support (Target: 200)																
	Activities planned	Week	1	2	3	4	5	6	7	8	9	10	11	12	13	14	15	16
AP023	Provide PSS to people affected by the crisis/disaster	x	x	x	x	x	x	x	x									
AP023	Provide PSS to staff and volunteers	x	x	x	x	x	x	x	x									



Water, sanitation and hygiene

People targeted: 20,000

Male: 50%

Female: 50%

Requirements (CHF): 59,108

Needs analysis: According to the BDRCS field assessment report and the national NAWG situation analysis reports, it is found that already the affected people have lost their access to safe drinking water and sanitation services. Water supply services and sanitation services have been disrupted due to the flash flood and waterlogging impacts. In addition, the quality of water has deteriorated due to contamination caused by flash floods. More detailed information e.g. on hygiene needs will be received from the NAWG assessment on 29 May.

Risk analysis:

- Consecutive flash floods since the monsoon season is ongoing
- COVID-19 situation may increase, and movement will be restricted
- Disrupted communication system at the community level due to flash flood impact
- Requirements for WASH support may increase due to the longer-term consequences of flash floods

Population to be assisted:

- 20,000 people will be reached through mass awareness on hygiene promotion
- Provide safe drinking water through mobilizing four water treatment units (including distribution of jerry cans)
- Construction of 100 emergency communal latrines, which will be accessible and safe for all including women and girls, and persons with disabilities.
- Disinfection of 500 water points
- 1,000 HHs will be reached with hygiene parcels

Programme standards/benchmarks: According to Bangladesh WASH cluster recommendation, the Sphere minimum standards, IFRC WASH guidelines for hygiene promotion in emergency operations.

P&B Output Code	WASH Outcome 1: Immediate reduction in risk of waterborne and water related diseases in targeted communities	# of people reached with WASH services (Target: 20,000)																
	WASH Output 1.2: Daily access to safe water which meets Sphere and WHO standards in terms of quantity and quality is provided to target population	# of people provided with safe water (Target: 15,000) # of water points repaired (Target: 500)																
	Activities planned	Week	1	2	3	4	5	6	7	8	9	10	11	12	13	14	15	16
AP026	Provide safe drinking water through mobilization of water treatment units and repair of waterpoints		x	x	x	x												
AP026	Distribution and replenishment of jerry cans or buckets		x	x	x	x												
AP026	Mobilization of trained NDWRTs and volunteers		x	x	x	x	x	x	x	x								
P&B Output Code	WASH Output 1.3: Adequate sanitation which meets Sphere standards in terms of quantity and quality is provided to target population	# of emergency latrines constructed (Target: 100)																
	Activities planned	Week	1	2	3	4	5	6	7	8	9	10	11	12	13	14	15	16
AP028	Construction of emergency communal latrines for affected people		x	x	x	x	x	x	x	x								
P&B Output Code	WASH Output 1.4: Hygiene promotion activities which meet Sphere standards in terms of the identification and use of hygiene items provided to target population	# of people reached through hygiene promotion (Target: 20,000)																
	Activities planned	Week	1	2	3	4	5	6	7	8	9	10	11	12	13	14	15	16
AP030	Conduct needs assessment: define hygiene issues and assess capacity to address the problem.		x	x	x	x	x	x	x	x	x	x	x	x	x	x	x	x
AP030	Select target groups, key messages, and methods of communicating with beneficiaries		x	x	x	x	x	x	x	x	x	x	x	x	x	x	x	x
P&B Output Code	WASH Output 1.5: Hygiene-related goods (NFIs) which meet Sphere standards and training on how to use those goods is provided to the target population	# of households provided with a set of essential hygiene items (Target: 1,000)																
	Activities planned	Week	1	2	3	4	5	6	7	8	9	10	11	12	13	14	15	16
AP030	Distribution and replenishment of hygiene parcels, coupled with orientation on usage of items		x	x	x	x	x	x	x	x								



Protection, Gender and Inclusion

People targeted: 20,000

Male: 50%

Female: 50%

Requirements (CHF): 20,235

Needs analysis: People have been forced to leave their houses due to the flash floods and are unable to access their toilets and tube wells facilities which hamper personal cleanliness and basic hygiene practices. This situation worsens more in the absence of privacy and safety while taking shelters in collective centres, particularly for women, adolescent girls, pregnant women, children, and people with disabilities. Lack of sanitary goods and disposal process, soaps are the main barriers of maintaining menstrual hygiene in the flood-affected areas.

Risk analysis: SGBV is a severe concern in this emergency. Particularly for women, girls, children, and people with disabilities taking shelter in flood shelter centres there is a heightened risk to be abused due to the absence of proper safety and security measure. Situation data will be collected on safety and protection related issues and will be ensured following Minimum Standards for PGI in Emergency and disseminating referral information for the particular group of people to access safe services.

Population to be assisted: The operation will ensure the promotion and participation of a diversified group of men and women among different age groups through orientation and consultation. During the household needs assessment, Sex, age, and disability disaggregated data (SADDD) will be collected and analysed along with particular information on SGBV and Child abuse, informing the emergency response. A continuous dialogue among the different stakeholders will be continued to ensure programmes mainstream DAPS (Dignity, Access, Participation and Safety) approach relevant to the needs and priorities of humanitarian imperatives on the ground. A PGI checklist will be shared among the sector team to ensure DAPS is appropriate. The IFRC child safeguarding risk analysis will be carried out for the operation.

Program standards/benchmarks: Indicate the *program standards or benchmarks e.g., Sphere* the activities will seek to meet.

The operation will the <https://media.ifrc.org/ifrc/document/minimum-standards-protection-gender-inclusion-emergencies/> and https://www.ifrc.org/sites/default/files/2021-08/All-under-one-roof_EN.pdf

P&B Output Code	Protection, Gender & Inclusion Outcome 1: Communities become more peaceful, safe and inclusive through meeting the needs and rights of the most vulnerable.	Does the operation demonstrate evidence of addressing the specific needs to ensure equitable access to disaster response services? (Target: yes)																
	Protection, Gender & Inclusion Output 1.1: Programmes and operations ensure safe and equitable provision of basic services, considering different needs based on gender and other diversity factors.	Is SADD data collected for analysis (Target: Yes) # of targeted people received dignity kits (Target: 1,000)																
	Activities planned	Week	1	2	3	4	5	6	7	8	9	10	11	12	13	14	15	16
AP031	Conduct Child Safeguarding Risk analysis and prepare action plan accordingly.		x	x	x	x	x	x	x	x								
AP031	Conduct an assessment of specific needs to define dignity kits for the specific group and the affected population based on criteria selected from the minimum standards for PGI in emergencies.		x	x	x	x	x	x	x	x								
AP031	Support sectoral teams to include measures to address vulnerabilities specific to gender and diversity factors (including people with disabilities) in their planning		x	x	x	x	x	x										
AP031	Hold basic ½ day training with IFRC and NS staff and volunteers on the Minimum Standards (or integrate a session on Minimum Standards in standard/sectorial trainings), PSEA policy and Child Protection Policy orientation (or integrate a session on addressing SEA and Child abuse in standard/sectorial trainings)		x	x	x	x												

AP031	Support sectoral teams to ensure collection and analysis of sex-age and disability-disaggregated data (see guidance in Minimum Standards)	x	x	x	x	x	x	x	x	x	x	x	x						
P&B Output Code	Protection, Gender & Inclusion Output 1.2: Programmes and operations prevent and respond to sexual- and gender-based violence and other forms of violence especially against children.	# of staff and volunteers will be oriented on code of conduct, PSEA policy, child protection policy and PGI minimum standard (target: TBC)																	
	Activities planned	Week	1	2	3	4	5	6	7	8	9	10	11	12	13	14	15	16	
AP033	Use Minimum Standards as a guide to support sectoral teams to include child protection and measures to mitigate the risk of SGBV	x	x	x	x	x	x	x	x	x	x	x	x	x	x	x	x	x	x
AP033	Include messages on preventing and responding to SGBV and child protection in all community outreach activities	x	x	x	x	x	x	x	x	x	x	x	x	x	x	x	x	x	x
AP033	Hold basic ½ day training with IFRC and NS staff and volunteers on addressing SGBV (or integrate a session on addressing SGBV in standard/sectorial trainings)	x	x	x															
AP033	Map and make accessible information on local referral systems for SGBV and any child protection concerns	x	x	x	x	x	x	x	x										

Strategies for Implementation

Requirements (CHF): 59,640

P&B Output Code	S1.1: National Society capacity building and organizational development objectives are facilitated to ensure that National Societies have the necessary legal, ethical and financial foundations, systems and structures, competences and capacities to plan and perform	National society has the necessary legal, ethical and financial foundations, systems and structures, competencies and capacities to plan and perform. (Target: Yes)																	
	Output S1.1.4: National Societies have effective and motivated volunteers who are protected	# of volunteers and staff covered under Insurance (Target: TBC)																	
	Activities planned	Week	1	2	3	4	5	6	7	8	9	10	11	12	13	14	15	16	
AP040	Ensure that volunteers are insured through solidarity fund of BDRCS	x	x	x	x	x	x	x	x	x	x	x	x	x	x	x	x	x	x
AP040	Provide complete briefings on volunteers' roles and the risks they face	x	x	x	x	x	x	x	x	x	x	x	x	x	x	x	x	x	x
AP040	Ensure volunteers are properly trained	x	x	x	x	x	x	x	x	x	x	x	x	x	x	x	x	x	x
P&B Output Code	Output S1.1.6: National Societies have the necessary corporate infrastructure and systems in place	# of NDRT/NDWRT/volunteers/staffs mobilized (Target: TBC) # of volunteers and staff oriented and trained (Target: TBC) Exit survey and PDM conducted (Target: Yes).																	
	Activities planned	Week	1	2	3	4	5	6	7	8	9	10	11	12	13	14	15	16	
AP084	Ensure CEA through establishing feedback response mechanism and using BDRCS hotline	x	x	x	x	x	x	x	x	x	x	x	x	x	x	x	x	x	x
AP042	Mobilization of NDRT, NDWRT, volunteers and staffs	x	x	x	x	x	x	x	x	x	x	x	x	x	x	x	x	x	x

AP042	Conduct exit survey, post-distribution monitoring	x	x	x	x	x	x	x	x	x	x	x	x	x	x	x	x	x
P&B Output Code	Outcome S2.1: Effective and coordinated international disaster response is ensured	<i>Engage with other humanitarian actors for coordinated humanitarian intervention. (Target: Yes - Inter-Agency)</i>																
	Output S2.1.3: NS compliance with Principles and Rules for Humanitarian Assistance is improved	<i>CEA mainstreamed in operation (Target: Yes)</i>																
	Activities planned	Week	1	2	3	4	5	6	7	8	9	10	11	12	13	14	15	16
AP084	Methods are put in place to ensure communities can participate in the response and influence decision-making	x	x	x	x	x	x	x	x	x	x	x	x	x	x	x	x	x
AP084	Community feedback systems are established, and feedback acted upon and used to improve the operation	x	x	x	x	x	x	x	x	x	x	x	x	x	x	x	x	x
P&B Output Code	Output S2.1.6: Coordinating role of the IFRC within the international humanitarian system is enhanced	<i>Regular coordination meetings conducted (Target: Yes))</i>																
	Activities planned	Week	1	2	3	4	5	6	7	8	9	10	11	12	13	14	15	16
	AP049	IFRC country office supports NS in coordinating with other humanitarian actors, relevant clusters and working groups on a regular basis.	x	x	x	x	x	x	x	x	x	x	x	x	x	x	x	x
P&B Output Code	Outcome S3.1: The IFRC secretariat, together with National Societies uses their unique position to influence decisions at local, national and international levels that affect the most vulnerable.	<i>The IFRC Secretariat, together with National Societies uses their unique position to influence decisions at local, national and international levels that affect the most vulnerable (Target: Yes)</i>																
	Output S3.1.1: IFRC and NS are visible, trusted and effective advocates on humanitarian issues	<i># of communication content widely shared (Target: 2)</i>																
	Activities planned	Week	1	2	3	4	5	6	7	8	9	10	11	12	13	14	15	16
AP053	Communications work	x	x	x	x	x	x	x	x	x	x	x	x	x	x	x	x	x
P&B Output Code	Output S3.1.2: IFRC produces high-quality research and evaluation that informs advocacy, resource mobilization and programming.	<i># of assessment done for needs, capacities and gaps (Target: 2) # of lessons learned workshop conducted (Target: 1)</i>																
	Activities planned	Week	1	2	3	4	5	6	7	8	9	10	11	12	13	14	15	16
	AP055	Assessment of needs, capacities and gaps	x	x	x	x	x	x	x	x	x	x	x	x	x	x	x	x
AP055	Organize lessons learned workshop																x	x
P&B Output Code	Outcome S4.1: The IFRC enhances its effectiveness, credibility and accountability	<i>IFRC extends appropriate technical support (Target: Yes)</i>																
	Output S4.1.2: IFRC staff shows good level of engagement and performance	<i>% of compliance with IFRC HR procedures (Target: 100%)</i>																
	Activities planned	Week	1	2	3	4	5	6	7	8	9	10	11	12	13	14	15	16
AP063	Ensure IFRC staffs are working in close coordination with BDRCS and provide technical assistance to implement the operation.	x	x	x	x	x	x	x	x	x	x	x	x	x	x	x	x	x

Funding Requirements

International Federation of Red Cross and Red Crescent Societies

all amounts in Swiss Francs (CHF)

DREF OPERATION

APPEAL CODE - Bangladesh - Flash Flood

22/05/2022

Budget by Resource

Budget Group	Budget
Water, Sanitation & Hygiene	53,500
Medical & First Aid	21,500
Other Supplies & Services	12,000
Cash Disbursement	225,000
Relief items, Construction, Supplies	312,000
Transport & Vehicles Costs	4,000
Logistics Services	2,000
Logistics, Transport & Storage	6,000
Volunteers	15,000
Personnel	15,000
Workshops & Training	12,000
Workshops & Training	12,000
Travel	22,000
Information & Public Relations	10,000
Financial Charges	2,750
General Expenditure	34,750
DIRECT COSTS	379,750
INDIRECT COSTS	24,684
TOTAL BUDGET	404,434

Budget by Area of Intervention

AOF3	Livelihoods and Basic Needs	237,229
AOF4	Health	28,223
AOF5	Water, Sanitation and Hygiene	59,108
AOF6	Protection, Gender and Inclusion	20,235
SFI1	Strengthen National Societies	35,145
SFI3	Influence others as leading strategic partners	7,455
SFI4	Ensure a strong IFRC	17,040
TOTAL		404,434

Reference documents

Click here for:

-

For further information, specifically related to this operation please contact:

In the Bangladesh Red Crescent Society

- Kazi Shofiqul Azam, secretary general; phone: +880 1811458500. email: secretarygeneral@bdracs.org
- Md. Rafiqul Islam, deputy secretary general; phone: + 880 1811458501; email: rafiqul.islam@bdracs.org
- Md. Mijanur Rahman, director, disaster response; phone: +880 0181 145 8522; email: mdmijanur.rahman@bdracs.org

In the IFRC Bangladesh Country Delegation

- Sanjeev Kafley, Head of Delegation, phone. +88 01794581877; email: sanjeev.kafley@ifrc.org
- Hasibul Bari Razib, senior manager, Disaster Preparedness, Response & Shelter; phone: +880 1718535128; email: hasibul.bari@ifrc.org

In the Asia Pacific Regional Office, Kuala Lumpur

- Alexander Matheou, regional director; email: alexander.matheou@ifrc.org
- Juja Kim, deputy regional director; email: juja.kim@ifrc.org
- Joy Singhal, head of HDCC unit; email: joy.singhal@ifrc.org
- Eeva Warro, operations coordinator; email: OpsCoord.SouthAsia@ifrc.org
- Siokkun Jang, logistics manager, email: siokkun.jang@ifrc.org
- Antony Balmain, communications manager; phone: +60-12-230-8451; email: antony.balmain@ifrc.org

In IFRC Geneva

- Rena Igarashi, senior officer, operations coordination; email: rena.igarashi@ifrc.org
- Eszter Matyeka, senior officer, DREF; email: eszter.matyeka@ifrc.org
- Karla Morizzo, senior officer, DREF; email: karla.morizzo@ifrc.org

For resource mobilization and pledges

- **In IFRC Asia Pacific Regional Office:** Alice Ho, partnership in emergencies coordinator; email: partnershipsEA.AP@ifrc.org

For planning, monitoring, evaluation and reporting (PMER) enquiries

In IFRC Asia Pacific Regional Office: Fadzli Saari, acting head of PMER and Quality Assurance unit; email: fadzli.saari@ifrc.org

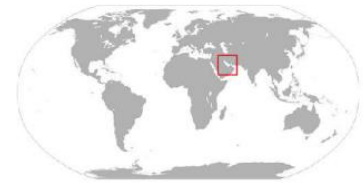
How we work

All IFRC assistance seeks to adhere to the **Code of Conduct** for the International Red Cross and Red Crescent Movement and Non-Governmental Organizations (NGO's) in Disaster Relief and the **Humanitarian Charter and Minimum Standards in Humanitarian Response (Sphere)** in delivering assistance to the most vulnerable. The IFRC's vision is to inspire, **encourage, facilitate and promote at all times all forms of humanitarian activities** by National Societies, with a view to **preventing and alleviating human suffering**, and thereby contributing to the maintenance and promotion of human dignity and peace in the world.



Bangladesh: Flash Flood Emergency Plan of Action (EPOA)

24 May 2022



The maps used do not imply the expression of any opinion on the part of the International Federation of the Red Cross and Red Crescent Societies or National Societies concerning the legal status of territory or its authorities. Map data sources: OCHA, OSM Contributors, ICRC, IFRC