


www.ifrc.org
Saving lives,
changing minds.

Emergency appeal operation update

Sri Lanka: Support for internally displaced people

 International Federation
of Red Cross and Red Crescent Societies

Emergency appeal n° MDRLK002 Glide n° FL-2010-000253-LKA Operation update n°14 9 January 2014

Period covered by this Ops Update:
1 June to 30 November 2013

Appeal target (current): CHF 22.7 million.

Appeal coverage: 68.9 per cent based on current revised appeal budget.

[<click here to go directly to the revised appeal budget, or here to link to contact details >](#)

Appeal history:

- [Emergency Appeal](#): Launched on 12 April 2010 for CHF 3.6 million to support 5,000 families of internally displaced persons (IDPs) in Sri Lanka for 24 months.
- [Revised Emergency Appeal](#): Launched on 8 July 2011 for CHF 6.1 million to support to assist 7,000 families (35,000 people) for 36 months.
- [2nd Revised Emergency Appeal](#): Launched on 20 September 2012 for CHF 23.3 million in cash, kind, or services to support to assist at least 20,000 families (100,000 people) for 67 months with expected completion by end of October 2015. A Final Report will be made available by January 2016 (three months after the end of the operation).



Two girls of a benefitted family in Madu, Mannar, in their new home (Photo: Mukesh Singh, IFRC)

Summary:

Red Cross Post Conflict Recovery Programme (RC PCR) in Sri Lanka is being implemented by Sri Lanka Red Cross Society (SLRCS), having a partnership with International Federation of Red Cross and Red Crescent Societies (IFRC) and other Movement and non-Movement partners. It primarily supports people who have been displaced due to the conflict and resettled at present. The entire programme follows the owner-driven approach and direct cash transfer to beneficiaries, in order to empower beneficiaries and improve the sense of community ownership. Shelter, including construction of new houses and repairing damaged houses is the key constituent of the programme, while other components such as supports on community infrastructure, water and sanitation (WatSan), livelihoods, health care, disaster management and organizational development all contributed to building up sustainable resilient community. Under the latest revision of the Emergency Appeal, number of benefitting families increased significantly, targeting 20,000 families in the north by strengthening the shelter and livelihood components and socio-economic infrastructure in a more efficient and effective manner, while adhering to the same framework of the existing operation.

The budget has been adjusted from CHF 23.3 million to CHF 22.7 million (2.4% variance) to reflect changes in operational cost and exchange rate of the local currency.

Our Partners:

The programme is an integrated movement intervention with overall coordination of IFRC and implemented by SLRCS with the support of Red Cross (table 1) and non-Movement partners.

Table 1: Summary of Supports from Red Cross partners as of 30 November 2013

Type of support	Partners
Multilateral	Australian Red Cross (ARC), Canadian Red Cross Society (CRC), Hong Kong branch of the Red Cross Society of China, Irish Red Cross (IRC), Korean Red Cross, Monaco Red Cross, Spanish Red Cross (Tsunami Residue Fund) and United Arab Emirates Red Crescent
Bilateral	Australian Red Cross (ARC), German Red Cross (GRC), Japanese Red Cross Society (JRCS), Norwegian Red Cross (NRC) and Taiwan Red Cross Organization (TRCO)

Meanwhile, GoI is the major donor to the programme since July 2012. All the Movement partners are supporting all the components of RC PCR, while GoI is supporting only shelter and WatSan components. SLRCS and IFRC are advocating to partners such as International Committee of Red Cross (ICRC), GRC, CRC, NRC, JRCS and TRCO to have joint plans for core programmes.

The situation

For nearly three decades, Sri Lanka has been scarred by a bitter war and in May 2009, the Government of Sri Lanka announced a decisive military victory over the Liberation Tigers of Tamil Eelam (LTTE or Tamil Tigers). All the districts of the Northern Province affected by the conflict, the entire Kilinochchi and Mullaitivu districts were fully deserted displacing all the inhabitants and there were partial displacements in Mannar, Vavuniya and Jaffna districts. Over half a million people had been displaced by the conflict. As a result, the situation in the north of Sri Lanka was critical for the affected people at the end of the war, who lost almost everything including accessibility and availability of shelter, WatSan facilities, health care services as well means of livelihood.

More than four years since the end of the conflict, all most all the people displaced have returned to their home areas. The government and partners have committed significant resources to help former IDPs for rehabilitation. The Joint Humanitarian and Early Recovery Update ([JH-ERU](#))¹ (November - December 2012, report no. 48) reveals, by the end of December 2012, 467,533 people (140,725 families) had returned to the Northern Province. With the closure of Menik Farm IDP camp in Vavuniya district, there are no 'new IDPs' living in camps in the country. This figure of resettled population is excluding the 3,550 refugees returned back to Sri Lanka from 2011 up until 31st October, 2013. According to Sri Lankan Deputy High Commissioner Chennai, number of refugees of Sri Lankan origin in India are 102,000 at present. [Arrival of refugees](#) in past three years is as follows.

Table 2: Arrival of Sri Lankan refugees back to Sri Lanka

Year	No .of Families	No .of Persons
2011	557	1,728
2012	453	1,291
2013 (as of 31 October)	196	531
Total	1,206	3,550

Source: Ministry of Resettlement

¹ This report indicates the UN and NGO partner response to continuing humanitarian needs and early recovery concerns, in support to the Sri Lankan government's efforts to rebuild the former conflict-affected regions. Activities show progress towards the sectoral priorities and goals described in the 2011 joint plan for assistance.

Need, government plan and the gap of assistance

The challenges in post conflict rehabilitation remain at a significant level. Government and humanitarian actors estimated the total number of houses in need of reconstruction is 143,268 in the north of Sri Lanka (table 3), Not even counting some 100,000 families expected to return to Sri Lanka from India and other countries in the next few years.

Table 3: Distribution of houses damaged and progress of the shelter assistance in the Northern Province

	District	Total Damaged	Commitment				No. of houses			
			New	Repair	Core house	Total	Completed	Ongoing	To be started	Outstanding
1	Vavuniya	14,640	5,670	284	89	6,043	3,969	1,215	859	8,597
2	Kilinochchi	40,939	13,681	3,203	315	17,199	12,536	4,029	828	23,740
3	Mullaitivu	38,455	11,546	3,150	187	14,883	8,389	4,800	1,672	23,572
4	Mannar	19,116	7,133	233	100	7,466	2,974	1,606	2,886	11,650
5	Jaffna	36,111	9,844	24	159	10,027	6,685	3,096	246	26,084
	Total	149,261	47,874	6,894	850	55,618	34,553	14,746	6,319	93,643

Data Compiled by: UN - HABITAT (Data source for the IDPs resettlement; UNHCR, Data source housing: Directors Planning, Directors - NEHRP and Respective agencies)

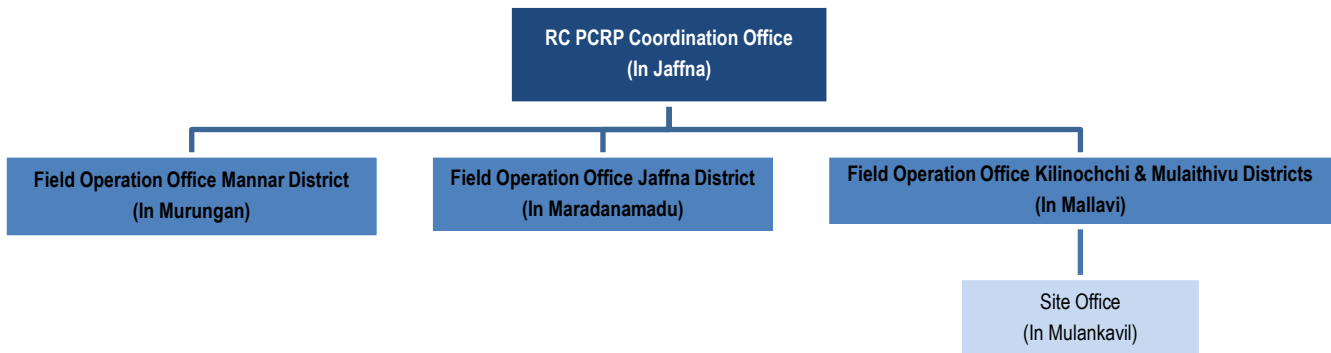
Out of the total commitment of 55,618 houses by donors on housing assistance, 34,553 houses had completed as of 27 August 2013, 14,746 houses in progress and the rest to be started. Another 21,032 houses (not inclusive of those stated in the above table) will be started by four implementation agencies under GoI support. The coverage by donors on shelters remains low - with committed funding for building or repairing sufficient for only 76,650 houses (55,618 + 21,032), which is 51.4 per cent of the total need (149,261 houses).

Coordination and partnerships

An early recovery coordination mechanism led by the government has been in place since the end of the war and was further strengthened and streamlined through the establishing of Presidential Task Force for Resettlement, Development and Security (PTF) for national recovery coordination. SLRCS, mandated as an auxiliary to government in humanitarian assistance, does coordination work at all levels with government authorities. The entire programme is carrying out assessments and consultations with the government authorities and representatives such as Government Agent, District Secretary, and Grama Niladhari. The PTF adopted the 'who does what where [\(3W\) online system](#)' as the primary monitoring tool to track the progress. Following the launch of the JPA in 2011, this 3W tool is being used as an effective monitoring tool to track progress of the humanitarian and early recovery efforts across the Northern region.

RC PCRPs are implemented by SLRCS with the overall coordination of IFRC, as an integrated programme with the support of Red Cross and external partners (please refer to the summary section above). RC PCRPs coordination office was established in Vavuniya in July 2010 and then moved to Jaffna in April 2013, from where the IFRC and SLRCS are operating at present. Field staff deployed in project sites and is based in three field operation offices and one site office covering entire Northern Province for efficient and effective implementation of the programme.

Figure 1: RC PCRP Office structure at present



Existing Rural Development Societies (RDS) of the villages takes the leading role in community level, organizing community meetings and activities, to facilitate the programme staff for field level activities. RDSs are being engaged in the process from the beginning to end in each and every step of the implementation. They are the community representatives, with whom the needs, issues and concerns of the communities are discussed. Transparent and effective relationship and coordination are maintained with government authorities from the ground to national level. Furthermore, the programme shares the experiences and coordinates with other partners at divisional and district level cluster meeting and other forums.

A meeting/ workshop among all the implementing agencies of IHP (UN Habitat, NHDA, Habitat for Humanity and IFRC/SLRCS) was held on 21 October 2013 in Kilinochchi. The objective of this event was to discuss issues and challenges and come up with a common solution to present to the donor. Some of the main points discussed and recommended are suitable alternative cost effective designs and best practices, mobilization and motivation of extremely vulnerable families, improve coordination with other agencies and authorities, facilitate the beneficiaries for other support such as livelihood and reconsideration of families who have not selected to IHP through the selection criteria, while there is a real need. Later High Commission of India organized a two-day workshop among all implementing agencies of IHP from 24-25 October at Counsel General of India office in Jaffna. The implementation agencies presented the outcomes from the meeting held on 21st October.

Red Cross Post-Conflict Recovery Programme

Overview

The RC PCRP is implemented as an integrated programme to support resettling communities within a comprehensive package of shelter, WatSan, livelihood, health and care, disaster management, community infrastructure and organizational development. Construction of new houses following the owner-driven approach is the key constitute of the programme, while other components complement the sustainability and the resilience of the community. RC PCRP is advocating for the most vulnerable in their rebuilding process. Moreover, it provides complementary assistance to the government and other agencies' ongoing efforts to the sustainable rehabilitation and reconstruction in the north of Sri Lanka, and ensures strong communication and coordination with other stakeholders to minimize the risk of both duplication and gaps.

The initial planning has two different sets of assistance for the target 19,746 families. The assistance for 1,347 families under this appeal and 1,599 families under PNS support offered fully-integrated package (housing, WatSan, livelihood, health and care, disaster management and infrastructure), while the assistance for 16,800 families under GoI support only covered housing and WatSan. Funds are sought to ensure assistance under GoI support is standardized as per the fully-integrated package. With the demand for improved housing, the programme is expected to expand further for rebuilding process upon available funding.

To strengthen the volunteer network and provide integrated assistance to the community the 'Volunteers in Action (VIA)' programme is introduced. VIA programme, is an innovative approach to develop multi-skilled volunteers, and aims to harness volunteer action for the holistic development of the communities. The VIA programme launched its activities in Kilinochchi and Mullaitivu at the start, and now expanded to entire northern province for the delivery of core programmes, while mobilizing volunteers and communities. These volunteers trained through VIA are the key persons in planning, organizing and implementing the branch activities with the communities (community services, first aid services, hygiene promotion activities, PSP activities, celebrate international days).

A total of seven community assessments conducted, three each in Kilinochchi and Mullaitivu districts and one in Vavuniya. Subsequently, integrated community plans (health, livelihood, WatSan and infrastructure) were developed for those areas (Kilinochchi – one year, Mullaitivu and Vavuniya - six months). Those are being implemented by the volunteers of respective branches, with the support of VIA programme of PCRCP.

Programme monitoring and evaluation

The operation management team maintains and implements regular monitoring mainly through an electronic database to follow all key stages of the programme. The database is maintained using MS Excel sheet and shared to relevant partners through Dropbox platform. In addition, the IHP data will be available to relevant parties through Red Cross Information Management System (R-CIMS) which is also uses MS Excel sheet. The R-CIMS will select relevant information from the same excel sheets to enable better tracking system and generate various reports as required. The online database shared with the donors and partners of the programme, where they can view any relevant information anytime, putting in transparency and accountability to the programme. Operational implementation and coordination meetings take place periodically as planned, including monthly and quarterly meetings. IFRC monthly management update, PCRCP quarterly update, periodical operations updates, biweekly, fortnightly and quarterly reports of IHP provide enough support to the monitoring mechanism. Additionally, IFRC receive reports from the field and undertake regular visits and/or spot-checks. This helps to identify and, where possible and necessary, resolve any problems. Regular and ad hoc reports provide necessary information in relation to the progress of the operation; and any changes in the situation during the reporting period and any particular problem, constraint or unmet need.

The RC PCRCP technical team members provides regular support to beneficiaries ensuring the use of quality construction materials, technical advice and supervision of entire construction phase to ensure quality and safety of houses. The construction of houses is being closely monitored by the monitoring officers with periodic visits and guidance from the senior management and other operation team members. RC PCRCP also receives guidance and advises from technical departments in Delhi, Kuala Lumpur and Geneva. During this period, the IFRC Asia Pacific zone director visited Mullaitivu branch, Red Cross funding project sites in Vadamardchchi and IHP sites in in Jaffna in October 2013.

Similarly, programme also receives support and advises from the Partner National Societies on regular basis. The Asia Programme Manager for International Department and the Programme Officer for Laos and Sri Lanka from Australian Red Cross (ARC), visited in July 2013, to observe ARC funded housing sites in Jaffna and Kilinochchi. In August 2013, the Deputy Head of International and Relief Service and the International and Relief Service Officer from the Hong Kong branch of the Red Cross Society of China (HKRC) visited HKRC funded housing sites Vavuniya and acquired better understanding on the project. During both visits, they met and discussed with the RC PCRCP team and observed the IHP sites in Jaffna meeting beneficiaries and observing ongoing housing construction. The Irish Red Cross desk officer visited in October 2013 to observe RC PCRCP activities supported by IRC in Jaffna and observed the completed project. They reviewed the programme and suggestions and recommendations were given based on their observations and findings, for the successful delivery of the programme.

Besides the internal monitoring, Government of India monitoring teams made four numbers of monitoring visits to IHP sites during the reporting period for monitoring of Indian Housing Project implemented by Red Cross. The first secretary for development cooperation of Colombo and the vice consul (DC) of Counsel General of India, Jaffna visited selected project sites in Mannar to inspect the land clearance issues and slow cases in August

2013. In September 2013, the High Commissioner of India to Sri Lanka with other high level officials from High Commission of India also visited IHP sites in Eluthumadduval, Jaffna. Subsequently a high level monitoring team led by the Additional Secretary, Development Partnership Administration (DPA) from the Ministry of External Affairs, Government of India and the consultant of HCI together with consultant architect visited north to observe the IHP status. In addition, the External Affairs Minister of India with high level delegation from India also visited Jaffna in October 2013 to observe the housing construction and its progress. These visitors attended house warming ceremonies of some newly constructed houses and handed over the house completion certificates during the visits.

An internal mini review of VIA programme is planned to conduct in December 2013, and an overall external evaluation will be commissioned after final completion of the programme. Resources needed would be shared between all partners involved. The wide-scale evaluation is vital at the end of the operation to ensure institutional learning.

Progress towards planned outcomes

Shelter	
Outcome: 18,159 affected families (90,800 beneficiaries) in northern districts have safe and adequate shelter and settlement solutions through the provision of cash grants and guidance on improved building techniques.	
Outputs (expected results)	Activities planned
Repair and constructed permanent houses by engaging beneficiaries in the construction process.	<ul style="list-style-type: none"> • Selection of sites and beneficiaries. • Strengthening of community based organizations to involve in addressing community issues and resolving constraints. • Setting up contract mechanisms and instalment systems. • Initiate 18,159 house constructions/repairs. • Execution of community contracts for the construction of community infrastructure. • Monitor and technical verification of progress.

Progress:

Implementation of the 1,359 houses (construction of 1,355 houses and repairing of 4 houses) under this appeal

At present, this appeal aims to support 1,346 families under the shelter component. IFRC is planning to expand support to more families in the coming years, hence funding will be sought to support this expansion.

During the reporting period, 278 houses were completed, adding up to the previously built houses, altogether a total of 1,104 houses were built. Some 242 houses are in progress, one house considered as write off (since the beneficiary family had left the area due to personal reasons) and 12 houses were not started in Vavuniya North under HKRC support (since those families identified by the government have yet to resettle in the area).

Table 4: Summary of distribution of shelter support and its progress under this appeal as of 30 November 2013

District	DS Division	Targeted no. of houses			Progress since appeal				
		New	Repairs	Total	Ongoing	Write off	Not started	Completed during reporting period	Completed as of 30 Nov 2013
Kilinochchi	Karachchi	300	0	300	11	1	0	8	288
	Poonakary	300	0	300	56	0	0	113	244
Jaffna	Maruthankerny	484	5	489	135	0	0	36	354

	Kareinagar	70	0	70	9	0	0	17	61
Vavuniya	Vavuniya North	199	1	200	31	0	12	104	157
TOTAL		1,354	5	1,359	242	1	12	278	1,104

Implementation of the 1,617 houses (construction of 1,291 houses and repairing of 326 houses) under PNS support

In addition to the houses funded by this appeal, GRC, TRCO, JRCS and NRC are supporting bilaterally 1,617 families to rebuild or repair their houses. 18 of the total houses were discontinued in Mullaitivu and Mannar since the families were unable to complete their houses during the project period. With that, the total under PNS support is 1,599 families at present.

Table 5: Summary of distribution of shelter support and its progress under PNS support as of 30 November 2013

District	DS Division	RCRC Donor	No. of houses			Progress since appeal			Present status
			New	Repairs	Total	Completed	Ongoing	Not Completed	
Kilinochchi	Karachchi	GRC	300	0	300	300	0	0	Completed
Mullaitivu	Maritemapattu	GRC	299	326	625	621	0	4	Completed
		TRCO	58	0	58	58	0	0	Completed
	Oddusuddan	GRC	150	0	150	138	12	0	Ongoing
		JRCS	240	0	240	214	26	0	Ongoing
	Welioya	GRC	50	0	50	44	6	0	Ongoing
Mannar	Madu	NRC	194	0	194	180	0	14	Completed
TOTAL			1,291	326	1,617	1,555	44	18	

A total of 2,945 families (1,346 under this appeal and 1,599 under PNS support) are in the programme constructing/repairing their permanent houses with Red Cross Red Crescent Movement support at present. This excludes the number of beneficiary who have either not started (12) or not completed their houses (19).

Implementation of construction of 16,800 houses (construction of 14,000 houses and repairing of 2,800 houses) under Government of India (Gol) support

This component of RC PCRCP commenced in July 2012 and the project was officially launched on 2 October 2012. As of 30 November 2013, a total of 10,920 families have been identified and approved as eligible families to receive assistance 7,305 families started either constructing new houses, or repairing damaged ones. A breakdown is shown in the below table (table 6).

Table 6: Summary of distribution of shelter support and its progress under Gol support as of 30 November 2013

District	No. of families		No. of houses			
	Planned	Identified and approved to receive assistance	New constructions		Repairs	
			Ongoing	Completed	Ongoing	Completed
Jaffna		2,651	1,489	1,016	13	9
Mannar		5,380	1,682	577	1	
Mullaitivu		1,863	1,136	443	0	
Kilinochchi		1,026	481	458	0	
Total	16,800²	10,920	4,788	2,494	14	9
Total			7,282		23	
Grand Total			7,305			

Of the total targeted 18,159 families (1,359 under this appeal and 16,800 under Gol support) in northern districts who lost their houses, some 3,607 families (1,104 under this appeal and 2,503 under Gol support) enjoy their

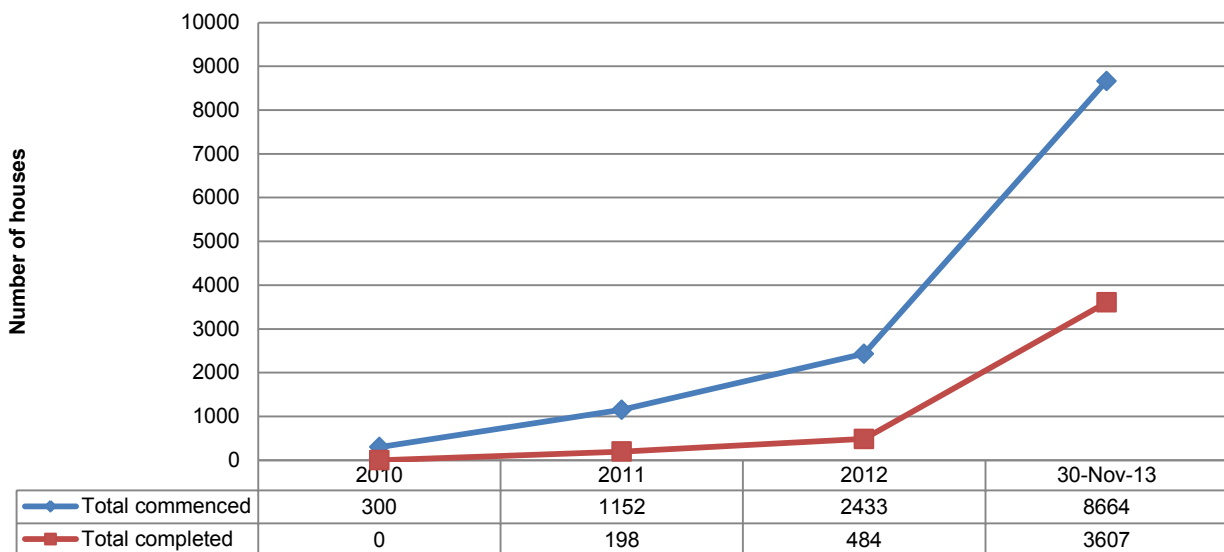
² The exact breakdown of planned number of families will be provided in the next update.

newly constructed or repaired houses, while 5,044 families (242 under this appeal and 802 under GoI support) are presently rebuilding their new homes by themselves.

Table 7: Progress of the house completion under this appeal as of 30 November 2013

Year	No. of houses		
	Newly constructed	Repaired	Total
2010	0	0	0
2011	198	0	198
2012	286	0	286
30-Nov-13	614	6	620
Total	1,098	6	1,104

Figure 2: Progress of the total housing component since appeal



A total of 3,607 families, who lost their households in the North, had overcome the trauma faced during the conflict period and had repaired/ constructed permanent houses. The beneficiaries are happy and proud to have their own place to live which is built by themselves and have something to pass on to next generation. Now they live a decent life with dignity and have a respectable social life, where the friends and relatives come and stay with them, carryout and participates in social and cultural functions and events such as weddings, temple/church festivals, parties at home, visiting neighbors, and spend evenings with other friends.

Community Infrastructure

Two projects have been completed by the Rural Development Societies in Ampalkulam and Selvanagar GN divisions in Kilinochchi under community infrastructure, while other project is about to complete.

Table 8: Progress of the community infrastructure implementation

District	GN Division	Activity	Progress
Kilinochchi	Krishnapuram	Construction of Community Hall	Finishing work ongoing
	Ampalkulam	Construction of Community Hall	Work completed
	Selvanagar	Construction of fence of 470 ft ² in the Selvanagar school	Work completed

Challenges:

- The beneficiaries who started constructing houses more than 500 sq ft³ often get stuck mid-way through the construction as they cannot afford their contributions to complete the house. This resulted in some delays

³ 500 sq ft under Red Cross supporting component and 550 sq ft under Government of India supporting component

under Red Cross funded housing programme. This group of beneficiaries are being followed regularly and provided required support to speed up the completion of houses. Under GoI funded housing programme, this has been taken as a key lesson and beneficiaries have been advised to first focus on meeting the minimum requirements, which resulted in more completion during shorter period.

- Some of the beneficiaries in the government list are not permanently resettled and SLRCS had to request for new lists. This is the key issue which delayed beneficiary identification and housing construction timeline.
- Skilled labour on masonry and carpentry is a limiting resource with the increasing demand. SLRCS is conducting training and capacity building for local people to increase the skilled labour force that may assist in speeding up the housing construction. At present, 130 persons received the training and another 213 from all five districts of the Northern Province will be receiving trainings.
- Due to limitation of skilled labour, masons and carpenters accept responsibility to construct more than one house, it delays construction of all houses he is engaged.
- Escalation of prices of building materials in the market due to the high demand and short supply such as sand and timber is directly impacting the construction and repairing of houses, restricting to meet the desired targets. SLRCS is closely monitoring and coordinating with local authorities to ensure uninterrupted supply being managed.
- Some beneficiaries are not available on the site probably due to livelihood activities or sometime found absence for long period due to unknown reasons. Such situation creates unnecessary delays of entire construction plan including difficulties for Red Cross team in providing technical support, taking photographs and signature to process fund request.
- During the cultivation period construction activities would be delayed, since the beneficiaries were engaged in the cultivation for their livelihood purpose.
- With the start of North Eastern monsoon season from November to February, entire Northern Province expected to receive heavy rains, which could delay construction and completion of houses once again. However, Red Cross team is well prepared and diverted focus to complete the houses which are already started and came up to the roof level where the direct effect of rain is minimal, except for transporting material due to bad weather and possible bad road condition.

Health and care

Outcome: The health risks on the affected population are reduced through the provision of health promotion and disease prevention 20,000 families (100,000 beneficiaries) in northern districts.

Outputs (expected results)	Activities planned
Enhanced knowledge and improved health practices in targeted communities through health promotion and prevention interventions.	<ul style="list-style-type: none"> • Conduct community assessments in selected areas to map the most acute health needs and develop and implement community plans with the full participation of the community. • Conduct relevant information, education and communication campaigns to increase awareness on identified health issues through various mediums including media, cultural art forms, posters, and billboards. • Conduct health awareness events in communities, emphasizing nutrition, disease control (mosquito-borne, water-borne, HIV/AIDS, diabetes/high blood pressure), hygiene and blood donor recruitment. • Identify and train community volunteers using the CBHFA training manual for volunteers. • Deliver community-based first aid training to community members. • Train 1,000 people in first aid and equip them to provide first aid in their communities.
Improved preparedness and response mechanisms in the target communities to better respond to health in	<ul style="list-style-type: none"> • Conduct dengue preparedness and response interventions in target communities. • Revise and update SLRCS contingency plans for responding to rapidly emerging epidemics/outbreaks during the course of the year.

emergencies and epidemics.	<ul style="list-style-type: none"> • Revise and update national disaster response team, branch disaster response team training curriculum by including relevant health topics in an integrated manner with disaster management unit.
Psychosocial support is provided to affected population	<ul style="list-style-type: none"> • Train 100 staff and volunteers of SLRCS on psychosocial support. • Provide psychosocial support to returning population.
Enhanced SLRCS profile and capacity at all levels to deliver effective health interventions.	<ul style="list-style-type: none"> • Print and distribute CBHFA volunteer manuals in target branches. • Expand the number of trained community volunteers in target branches. • Establish a system of regular activity reporting in the field, project monitoring, donor reporting and information dissemination. • Strengthen monitoring and reporting systems in the branches. • Produce appropriate volunteer protection and visibility materials for SLRCS. • Document and share best practices and lessons learnt from the SLRCS's work in the communities.

Progress:

An Integrated Community Assessment was conducted by volunteers attached to Vavuniya branch with community representatives, in Vavuniya North DS division in Vavuniya district, to map all the needs related to health, WatSan, disaster management and infrastructure needs. Later the Integrated Community Development Plans were developed, based on the findings of Integrated Community Assessment with the full participation of the community. These plans comprise of both hardware (small scale mitigation/ renovation) and software (training/workshop) activities. Implementation of the hardware activities under WatSan component has been started. Five number of junior first aid trainings were planned in Vavuniya North, out of which two completed and rest to be conducted by the end of December 2013.

A total of 1,018 persons (male: 254, female: 764) were trained on first aid at present. This includes elders, i.e. community members, PCRPs beneficiaries, PCRPs & SLRCS staff, volunteers, school teachers, community police workers, Police Officers and health volunteers attached to Ministry of Health (MoH) trained through 39 numbers of basic first aid trainings and children/school students trained through 12 number of junior first aid trainings. Most of those first aid trainings conducted were enlightened by an activity of Youth as Agents of Behavioural Change (YABC) tool kit and conducted by the YABC peer educators of the respective branches. The Tamil medium first aid instructors of the North also went through a YABC workshop, facilitated by the YABC facilitators of SLRCS. These first aid instructors gain knowledge and skills on integration of behavioural skills (e.g. empathy, active listening, critical thinking, non-judgement and dropping bias, non-violent communication and peaceful resolution of tensions) in their daily RCRC work.

A dengue prevention campaign was conducted by the volunteers of SLRCS Jaffna branch with the collaboration of Public Health Inspector and Police Officers of the areas, in Sandilipay, Tellipalai, Uduvil, Kopay and Delft DS divisions of Jaffna in July 2013. They have visited 1,720 households and made the communities knowledgeable on dengue and its prevention.

Volunteers of the Mullaitivu branch conducted a PSP activity for differently able children of 'Iniya Valvu Illam School / children home' in September 2013. This was conducted as the second activity of the prepared action plan by the Mullaitivu branch volunteers, at the PSP follow-up workshop conducted on 22 June 2012. Volunteers are planning to carry out other activities in the plan as well in future which greatly helps the psychological wellbeing of the conflict affected communities.

Table 9: Summary of persons trained in health and care

Training/ workshop/ activity		No. of trainings	No. of persons trained			Participants
			Male	Female	Total	
Conducted before	Basic first aid	30	182	542	724	Staff, volunteers, school teachers, students, community police workers,

reporting period						community members, PCRCP beneficiaries
	Advanced first aid	1	14	14	28	Participants qualified through basic first aid training
	Training of Trainers (ToT) on first aid	2	21	7	28	Persons qualified through advanced first aid training
	Community-based health and first aid (CBHFA)	3	10	80	90	Staff, volunteers
	Psychosocial support programming(PSP)	1	6	21	27	Staff, volunteers
	PSP follow-up workshop	2	4	14	18	Participants of 2011 PSP training
	PSP activity	2	37	16	53	Children of Kanthi Children's Home, Kilinochchi and Paari Children's' Home, Mullaitivu
Conducted during reporting period	Integrated Community Assessment	3	26	42	68	Representatives of communities in three GN Divisions (Madu, Paranthan, Mddyamadu) Vavuniya North and volunteers of Vavuniya branch
	Basic first aid	9	58	186	244	PCRCP beneficiaries, Police Officers, school students, community representatives, health volunteers attached to MoH, SLRCS Mullaitivu branch volunteers
	Junior first aid	12	135	192	327	School children
	YABC workshop	1	16	3	18	Tamil medium FA instructors
	Dengue Prevention campaign	1	-	-	-	1,720 house holds
	PSP activity	1	19	28	47	Differently able children of Iniya Valvu Illam school / children home

The trained people are supporting the communities in addressing health needs and priorities, since there is a present gap in disease surveillance, prevention and control, preventive health, maternal and child health and nutrition in the North, where the dengue prevention campaigns and PSP activities are best examples. Simultaneously, these trainings would strengthen the SLRCS's capacity in serving the most vulnerable people in health and care services and in emergencies.

Water, sanitation, and hygiene promotion

Outcome: The risk of water and sanitation related diseases have been reduced through the provision of safe water, adequate sanitation and hygiene promotion for up to 20,000 families (or 100,000 beneficiaries) in northern districts.

Outputs (expected results)

Increased access to safe drinking water and basic sanitation

Activities planned

- Construct and repair 18,147 household latrines in conjunction with the permanent shelter construction.
- Construction and repair of 41 communal school water and sanitation systems.
- Construct public drinking water wells.

	<ul style="list-style-type: none"> • Construct/repair individual household wells. • Distribute 20,000 ceramic household water filters; with training, one per family⁴ in targeted communities to produce safe drinking water. • Execute community contracts for reconstruction of water supply infrastructure (including training on repair maintenance of the infrastructure).
Knowledge of good hygiene behaviours has increased in target population.	<ul style="list-style-type: none"> • Baseline of hygiene knowledge and practices. • Training of community volunteers in hygiene promotion through participatory hygiene and sanitation transformation (PHAST). • Develop/revise and print relevant IEC materials to be used. • Conduct hygiene promotion activities linked with water supply and sanitation hardware through the trained volunteers. • Hygiene promotion for school children through child hygiene and sanitation transformation (CHAST). • Conduct household level monitoring and an endline assessment to evaluate level of improvement in hygiene knowledge.

Progress:

Water and sanitation activities are being implemented in conjunction with housing construction. The priority is given for the sanitation component (construction of toilets) and if that is already been addressed, the funds are then used for the improvements of water supply; including construction and repairing of individual household wells and provision of water supply for individual use. Of those 1,359 families in the programme under this appeal, 1,326 families had received the WatSan grant, where 910 had completed construction/repair toilets and rest are nearly at completion stage (table 10). Construction of the toilets under GoI support are going in line with housing construction, since families get an inclusive package of housing and WatSan together, where 2,503 toilets were completed. In total, 3,413 (910 + 2,503) toilets were completed as of 30 November 2013, out of the targeted 18,147.

Table 10: Present status of WatSan component of the programme under this appeal

District	No. of families				
	in the program	received grant since appeal	received grant during reporting period	to be received the grant	discontinued/ not started
Kilinochchi	600	591	13	9	0
Jaffna	559	552	15	7	0
Vavuniya	200	183	35	5	12
TOTAL	1,359	1,326	63	21	12

Implementation of construction/ repair of school and communal WatSan systems under WatSan component is in progress. Nine projects started, six completed and three ongoing as of 30 November 2013.

Table 11: School and communal water and sanitation infrastructure activities and progress

	Name of the school/ village	Activity	Project implementation	Progress
1	Selvanagar GTMS, Kilinochchi	Construction of 6 urinals (3 boys and 3 girls) & renovation of septic tank & soakage pit of the old toilet	Rural Development Society	All construction and renovation complet.
2	Oddusuddan Maha	Renovation of existing	School Development	All renovation completed. School

⁴ In the lessons learnt following 2004 tsunami by SLRCS distributing ceramic household water filters, it was documented that for larger households, one filter may not provide sufficient safe drinking water. However, due to limited resources, SLRCS will continually increase the support in this component when additional resources are made available.

	Vidyalayam, Mullaitivu	overhead water tank and two wells	Society	children, parents and teachers received hygiene promotion.
3	Periyamadu GTMS, Vavuniya	Construction of new tube well	RC PCRP	Construction work completed. School children, parents and teachers received awareness on maintenance of tube well and hygiene promotion.
4	Ananathyapuliyankulam GTMS, Vavuniya	Renovation of existing tube well	RC PCRP	
5	Unchalkadai GTMS, Vavuniya	Construction of new tube well	RC PCRP	
6	Ramanor GTMS, Vavuniya	Construction of new tube well	RC PCRP	
7	Kanmany Pre-school, Vavuniya	Renovation of preschool building, common well and toilet	Pre-school Development Society	Work not started and waiting for 1 st instalment
8	Madyamadu Pre-school, Vavuniya	Construction of new toilet for pre school	Rural Development Society	Work ongoing and foundation completed with 1 st instalment
9	Vinnayakulam, Vavuniya	Renovation of common well	Rural Development Society	Renovation work ongoing

Two projects implemented by School Development Societies and three other projects by Rural Development Societies in the area, where the technical support provided by the programme, following owner driven approach. Construction/installation and renovation of tube wells were done by Water Resources Board (WRB) of Sri Lanka, as a direct contractor to the RC PCRP, since the communities are not able to undergo such projects. Hygiene promotion activities were carried out by the trained volunteers, following hardware improvements.

All the RC/RC supported families of the PCRP (1,342 families) received ceramic water filters with training on use and maintenance to ensure safe drinking water. Five discontinued/ write off families and another 12 families whom not started in Vavuniya North were excluded from this component. Upon receiving the WatSan assistance through PCRP, those benefitting families received the access to safe and adequate water and sanitation which is a fundamental human right and essential to life, health and dignity.

Livelihood Support

Outcome: To assist 20,000 displaced families (100,000 beneficiaries) in replacing, repairing, re-establishing and strengthening their household income through the provision of cash grants and guidance on sustainable livelihood interventions.

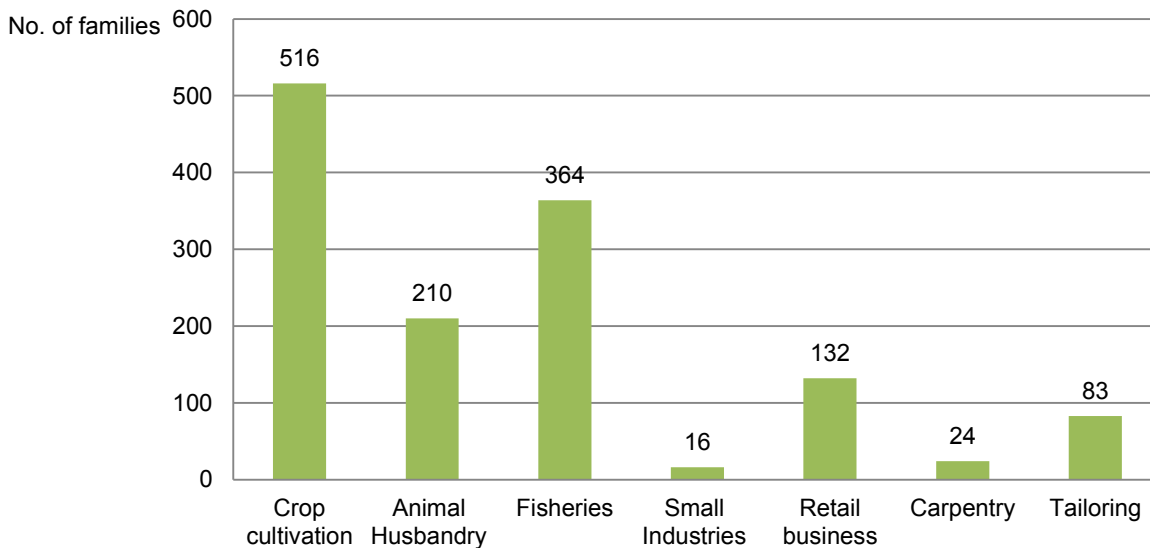
Outputs (expected results)	Activities planned
Improved livelihoods for the most vulnerable of the affected Population	<ul style="list-style-type: none"> Assess the livelihood needs of some 20,000 displaced families (100,000 beneficiaries) within re-settled population. Provide grants/resources to enable households to re-establish and strengthen their livelihoods such as farming, livestock rearing, fishing and microenterprise.
Sustainably improved community livelihood capacities	<ul style="list-style-type: none"> Conduct household livelihood surveys to identify needs of the families in order to provide them the necessary skills and to facilitate access to government and other institutions for assistance on skills acquisition. Assist in establishing model farms on gardening. Beneficiary training on agriculture and integrating farm and composting practices, livelihood skills and vocation training on different trades.

Progress:

After successful submission of livelihood proposals by each family of the programme, 1,337 families received a cash grant of LKR 35,000 (approx. CHF 252) in two instalments. There are 10 families in the final stage to

receive 2nd instalment and another 12 families whom not started in Vavuniya North were excluded from the livelihood component. Therefore 99 per cent of the commenced 1,347 families (1,359 minus 12) completed the project at present, while the rest will complete by the end of the year. The families made use of the grant for their livelihood based on the livelihood proposals submitted by each family during the assessment period. Additionally they received livelihood trainings for their respective area of livelihood such as agriculture, livestock, fisheries, carpentry and tailoring before the reporting period.

Figure 3: Use of the grant for the livelihood activities



Of those 1,359 families in the programme under this appeal, 1,345 families had received the livelihood 1st instalment since appeal (12 not started and another two write off), where 1,336 received both livelihood grants. Livelihoods of majority of the people in the Northern Province are based on the agricultural activities. Most (81 per cent) of them had spent the funds in agriculture (crop cultivation i.e. paddy cultivation, home gardening, fruits and vegetable farming, animal husbandry and fisheries).



Mr Vellaisamy and wife in front of their completed house
(photo: Kukan Sinniah, IFRC)



Mr Rajakulasingam in his papaya farm (photo: Kukan Sinniah, IFRC)

The livelihood grants were either used for vegetable cultivation such as purchasing of water pump or seeds, fertilizer and agrochemicals. The crop in the next season offered stable income, which helped the beneficiaries to fully complete their houses. Some beneficiaries also have extended the cultivation to half acre of land, with a model home garden or papaya cultivation. Papaya harvest is expected by January 2014 in which will bring in LKR 30 per kg of papaya in sales. These examples showed how people restarted their livelihood through the cash grants

As of revised emergency appeal, it is being planned to assist additional 16,800 families with livelihood grants who are currently receiving housing and WatSan assistance under GoI support. This is to ensure a standardized assistance package to all target families as what was offered under this appeal and PNS support. However, the response from partners and donors are very minimal.

To respond to the increasing demand in the markets for skilled masons and carpenters a network of organizations and agencies such as Vocational Training Authority of Sri Lanka (VTA), National Apprentice and Industrial Training Authority (NAITA), College of Technology, Jaffna College and Institute of Technology were contacted to provide residential and non-residential training. As the first step of this process, 50 persons were trained as masons and carpenters in July 2013.

Table 12: Distribution of trainees under the artisan trainings in stage 1

District	No. of training programmes held		No. of persons completed training
	Masonry	Carpentry	
Mullaitivu	1	0	22
Vavuniya	1	1	28
Total	1	1	50

Other series of trainings started during this period as well, focusing on the skill development linked to the current and potential livelihoods in construction field. A total of 1,000 persons are expected to be trained under artisan trainings, where 293 persons selected for the trainings from all five districts of North at present. The first batch of 80 masons from Mullaitivu completed the training and the rest of the 213 is under the four months training, started in August 2013 and to be completed in December 2013.

Table 13: Distribution of trainees under the artisan trainings in stage 2

	Vocational trade	Mullaitivu	Kilinochchi	Jaffna	Vavuniya	Mannar	Total
1	Carpentry	-	5	12	13	21	51
2	Masonry	80	-	12	7	-	99
3	Electrical wiring	-	51	31	26	-	108
4	Plumbing	-	19	-	16	-	35
	Total	80	75	55	62	21	293

This will increase workforce of masons and carpenters, which has a huge demand right now of such skilled persons for ongoing housing projects in the north.

Challenges:

- Lack of well-established markets for improved productive inputs, such as hybrid and adaptable crop varieties and extension and support service facilities to introduce modern and advance techniques, particularly for the agriculture and livestock sector hinder the potential of high productivity.
- Physical access to some agricultural lands in the area is restricted due to land mines which are yet to be cleared. However, there is substantial progress in the recent days.
- The targeted people for vocational fields of masonry and carpentry did not show much interest as many of them would prefer to do labourer work which is paid on daily basis. However, a subsistence allowance system supported by the Governor's office of the Northern Province was introduced to encourage participation in the vocational training. In addition, the RC PCRIP is working with different organizations including the government of Sri Lanka to identify and encourage some people to be trained in different areas.

Disaster Management

Outcome: Local communities are fully aware of local risks and resources available and are prepared and equipped to respond to disasters. Number of families targeted is 20,000 displaced families (100,000 beneficiaries)

Outputs (expected results)

Activities planned

Communities are educated in safe behaviours and principles and values	<ul style="list-style-type: none"> • Develop/conduct awareness raising activities on mine and other risks (information, education and communication material development, school level competitions, humanitarian values). • Support school children with recreational activities/facilities.
Disaster response tools, mechanisms and systems are established in northern districts with adequate capacities to deliver services	<ul style="list-style-type: none"> • Formation and training of local disaster response teams. • Provision of standard equipment. • Develop local contingency plans for the identified risks/hazards. • Facilitate coordination with government disaster response mechanisms.
Skilled human resources base is established in northern branches to carry out disaster management activities	<ul style="list-style-type: none"> • Conduct disaster management training for staff and volunteers.

Progress:

Vavuniya branch received Branch Disaster Response Team (BDRT) training, while divisional volunteers of four SLRCS divisions (attached to four branches in North) received Divisional Disaster Response Team (DDRT) training (table 14). The teams acquired knowledge and skills mainly on assessment and relief distribution and these teams are now ready to respond to emergency situations.



The Divisional Disaster Response Team of Vavuniya branch after completion of the training in September 2013 (photo: LSRCS)

Table 14: Summary of persons trained in disaster management

Training	No. of trainings	No. of persons trained			Participants	
		Male	Female	Total		
Conducted before reporting period	Mine Risk Education (MRE)	8	147	68	215	Staff, volunteers
	Basic Disaster Management	3	12	62	74	Staff, volunteers
	Branch Disaster Response Team (BDRT) training – Mullaitivu	1	12	19	31	Branch governance, government officials of Disaster Management Centre, staff, volunteers
	BDRT training – Kilinochchi	1	18	13	31	Volunteers, branch governance, officials from government, SLRCS staff
	Contingency Plan Development Workshop – Mullaitivu	1	8	6	14	Governance, management staff and volunteers of Mullaitivu branch
	Contingency Plan	1	14	4	18	Governance, management staff

	Development Workshop – Kilinochchi					and volunteers of Kilinochchi branch
	Workshop on communication in emergencies	1	19	3	22	PCRCP Staff
Conducted during reporting period	BDRT training - Vavuniya	1	7	23	30	Volunteers, branch governess, officials from government, SLRCS staff
	Divisional Disaster Response Team (DDRT) training	4	4	20	24	SLRCS volunteers of Vavuniya
			5	27	32	SLRCS volunteers of Jaffna
			8	20	28	SLRCS volunteers of Mullaitivu
6			35	41	SLRCS volunteers of Kilinochchi	

Organizational development

Outcome: Branch-level structures in Kilinochchi and Mullaitivu districts are able to provide effective support for local population to improve community resilience, to develop healthy lifestyles, prepare for disasters and respond to emergencies.

(expected results)	Activities planned
Developed SLRCS local structures to facilitate community-level service delivery mechanisms in northern districts.	<ul style="list-style-type: none"> Establish/reactivate SLRCS structures to support volunteer work of units and divisions. Orientation and support for divisional governance on the Red Cross Red Crescent Movement and constitution, policies and management manuals. Introduction and assistance for health and disaster management in implementing volunteer management systems at divisional level. Develop leadership capacity, awareness on good governance among the divisional level leaders. Support and training on project management and budgeting. Awareness on SLRCS systems and procedures (finance, planning, activity implementation, reporting, and others) for divisions. Support in formation of divisional health and DM volunteer action groups and induction trainings. Support for conducting integrated assessments. Support for initiation of community services. Support for development of fundraising and income-generation plans for divisions. Support community committees in raising common concerns, working to minimize impacts and participate in Red Cross activities. Accreditation of the beneficiary committees as Red Cross units/divisions

Progress:

A workshop on 'beyond housing' conducted in June 2013, with participation of selected programme team members to discuss the scope and ideas on integrating software components to hardware components of the programme, focusing on the project sites covered under IHP. It was discussed to implement more intense community development projects in few selected most vulnerable communities. Another technical workshop was conducted in July 2013, with key officials of the programme to discuss the technical issues of ongoing IHP.

All RC PCRCP team participated in a team building exercise, where different activities were facilitated by external as well as internal facilitators promoting team spirit.

The programme strengthened SLRCS's organizational capacity, mainly in Kilinochchi and Mullaitivu districts. This includes mobilizing the appropriate skills and competencies in branch staff and volunteers to provide services to local communities, strengthening the SLRCS branch structures, and maintaining the branch capacities to ensure delivery of services to communities in the longer run. Furthermore, the programme extended support to Mannar, Vavuniya and Jaffna branches as well.

Software activities of the health, WatSan and disaster management components are being done with the support of trained volunteers of the respective branches, which helps the branches for volunteer retention and Red Cross dissemination. This further extended to divisional level through DDRT trainings, which supported in formation of divisional health and DM volunteer action groups.

Communications – Advocacy and Public information

A number of activities under communication and visibility are being carried out in the programme to make the implementation process efficient and effective.

Red Cross Information Management System (R-CIMS): A new database has been developed recently meeting the requirement of High Commission of India for managing and tracking the progress of IHP. This database has been developed in consultation and feedback from RC PCRP team.

Call-Centre: The call-centre is in operation from 29 July 2013 during the weekdays from 8:30 am to 4:30 pm. Five volunteers of Jaffna branch received tailored training to run the call centre, both on IHP and operation of call center, and being mobilized on rotational basis to attend the calls. The operation of call-centre has been disseminated to communities; however this needs more efforts to ensure that people are well aware about such facility and calls to clarify any queries on IHP. So far the numbers of calls are very less but it is expected to increase, when new verification starts. A promotional poster is being designed for both call-centre and radio show to attract more audiences and provide direct access to information to all RC PCRP beneficiaries enhancing beneficiary communication. The call-centre is mainly used by beneficiaries to enquire and feedback to the RC PCRP programmes, in which common queries included when will be the next transfer, why is there delay, what is the selection criteria, why they are not eligible, etc.

Radio show Hour for Humanity: The radio is the most accessible medium of communication in the Northern Province and we estimate an audience of at least 500,000 people. All radio shows are uploaded on [SLRCS YouTube site](#) as well as on the [SLRCS web site](#).

Contact information

For further information specifically related to this operation please contact:

Sri Lanka Red Cross Society:

- Tissa Abeywickrama, Director General, phone: +94 77 751 0706; email: tissa.abeywickrama@redcross.lk

IFRC Sri Lanka country office:

- Igor Dmitryuk, Head of Office, phone: +94 77 765 1540; email: igor.dmitryuk@ifrc.org
- Mukesh Singh, Head of Sub Office, phone: +94 77 342 8599; email: mukesh.singh@ifrc.org

IFRC South Asia regional office:

- Simon Missiri, Head of Regional Office, phone: +91 11 26154021 to 24, fax: +91 11 26154025; email: simon.missiri@ifrc.org

IFRC Asia Pacific zone office:

- Karen Poon, Operations Coordinator, phone: +603 9207 5798, mobile: +6013 360 0366; email: karen.poon@ifrc.org
- Al Panico, Head of Operations, phone: + 603 9207 5700; email: al.panico@ifrc.org
- Nathan Rabe, Resource Mobilisation and Relationship Management Coordinator; phone: +603 9207 5773; email: nathan.rabe@ifrc.org
- Peter Ophoff, Head of PMER; phone +603 9207 5775; email: peter.ophoff@ifrc.org
- Please send all pledges for funding to zonerm.asiapacific@ifrc.org
- Florent Chané, Zone Logistics Coordinator; email: florent.chane@ifrc.org



1. Click [here](#) for revised appeal budget
 2. Click [here](#) to return to the title page
-

How we work

All IFRC assistance seeks to adhere to the Code of Conduct for the International Red Cross and Red Crescent Movement and Non-Governmental Organizations (NGO's) in Disaster Relief and the Humanitarian Charter and Minimum Standards in Disaster Response (Sphere) in delivering assistance to the most vulnerable.

The IFRC's vision is to inspire, encourage, facilitate and promote at all times all forms of humanitarian activities by National Societies, with a view to preventing and alleviating human suffering, and thereby contributing to the maintenance and promotion of human dignity and peace in the world.

www.ifrc.org
Saving lives, changing minds.



The IFRC's work is guided by Strategy 2020 which puts forward three strategic aims:

1. Save lives, protect livelihoods, and strengthen recovery from disaster and crises.
2. Enable healthy and safe living.
3. Promote social inclusion and a culture of non-violence and peace.

EMERGENCY APPEAL

17/12/2013

MDRLK002 Sri Lanka : Support for IDP

Budget Group	Multilateral Response	Inter-Agency Shelter Coord.	Bilateral Response	Appeal Budget CHF
Construction - Housing	6,757,944			6,757,944
Construction - Facilities	251,520			251,520
Water, Sanitation & Hygiene	1,103,933			1,103,933
Medical & First Aid	1,355			1,355
Teaching Materials	1,833			1,833
Utensils & Tools	25,000			25,000
Other Supplies & Services	3,322,148			3,322,148
Cash Disbursements	37,170			37,170
Total RELIEF ITEMS, CONSTRUCTION AND SUPPLIES	11,500,903	0	0	11,500,903
Vehicles	164,910			164,910
Computer & Telecom Equipment	59,908			59,908
Office/Household Furniture & Equipment	15,442			15,442
Other Machinery & Equipment	3,000			3,000
Total LAND, VEHICLES AND EQUIPMENT	243,260	0	0	243,260
Distribution & Monitoring	1,000			1,000
Transport & Vehicle Costs	538,392			538,392
Total LOGISTICS, TRANSPORT AND STORAGE	539,393	0	0	539,393
International Staff	842,125			842,125
National Staff	663,195			663,195
National Society Staff	2,778,196			2,778,196
Volunteers	19,957			19,957
Total PERSONNEL	4,303,473	0	0	4,303,473
Consultants	149,442			149,442
Professional Fees	101,896			101,896
Total CONSULTANTS & PROFESSIONAL FEES	251,338	0	0	251,338
Workshops & Training	671,454			671,454
Total WORKSHOP & TRAINING	671,454	0	0	671,454
Travel	49,969			49,969
Information & Public Relations	306,446			306,446
Office Costs	457,109			457,109
Communications	117,213			117,213
Financial Charges	243,592			243,592
Other General Expenses	1,998,437			1,998,437
Shared Office and Services Costs	581,012			581,012
Total GENERAL EXPENDITURES	3,753,777	0	0	3,753,777
Programme and Services Support Recovery	1,382,134	0		1,382,134
Total INDIRECT COSTS	1,382,134	0	0	1,382,134
Pledge Earmarking & Reporting Fees	90,879			90,879
Total PLEDGE SPECIFIC COSTS	90,879	0	0	90,879
TOTAL BUDGET	22,736,609	0	0	22,736,609
Available Resources				
Multilateral Contributions	15,665,819			15,665,819
TOTAL AVAILABLE RESOURCES	15,665,819	0	0	15,665,819
NET EMERGENCY APPEAL NEEDS	7,070,790	0	0	7,070,790