


www.ifrc.org  
Saving lives,  
changing minds.

# Emergency Plan of Action (EPOA)

## Uganda: Flash Floods & Landslides

 International Federation  
of Red Cross and Red Crescent Societies

<b>DREF Operation n°</b>	<b>MDRUG046</b>	<b>Glide n°:</b>	<a href="#">FL-2022-000275-UGA</a>
<b>Date of issue:</b>	<b>15 August 2022</b>	<b>Expected timeframe:</b>	4 months
<b>Operation start date:</b>	<b>15 August 2022</b>	<b>Expected end date:</b>	31 December 2022
<b>Category allocated to the of the disaster or crisis:</b> <b>Yellow</b>			
<b>DREF allocated: CHF 371,495</b>			
<b>Total number of people affected:</b>	20,949 people	<b>Number of people to be assisted:</b>	9,281 (1,547 HH)
<b>Provinces affected:</b>	7 districts including Mbale, Kapchorwa, Sironko, Bulambuli, Bukedea, Bududa, and Butaleja districts	<b>Provinces/Regions targeted:</b>	3 districts including Mbale, Bulambuli and Bukedea
<b>Operating National Society presence (n° of volunteers, staff, branches):</b> 70 volunteers, 14 staff in 3 Branches			
<b>Red Cross Red Crescent Movement partners actively involved in the operation:</b> International Federation of Red Cross and Red Crescent Societies (IFRC)			
<b>Other partner organisations actively involved in the operation:</b> Catholic Relief Services (CRS), Malteser International, World health organisation (WHO), UNICEF, International Organization for Migration (IOM), National Water & Sewerage Corporation (NWSC)			

## A. Situation analysis

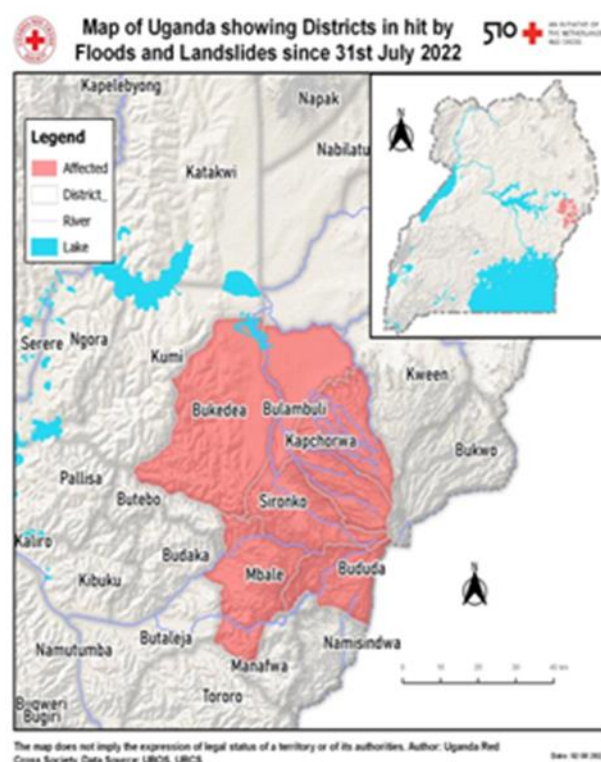
### Description of the disaster

On 30th July 2022, eastern Uganda received 10 hours of continuous heavy rains in the Elgon region causing [floods](#) in the districts of Mbale, Kapchorwa, Bulambuli, Bukedea, Butaleja Sironko, and landslides in Bududa.

The flooding led to loss of 21 lives in [Mbale](#) and 3 lives in Kapchorwa districts respectively with an unknown number of livestock lost. Further, the flooding left a trail of destruction to homesteads, schools, government and social institutions, damage to vehicles and displacement of thousands of people from their homes. Those displaced populations are currently in host-families within safer zones in the neighborhood while others are currently living at established temporary internally displaced persons camps in nearby primary schools. Bridges have been cut off and roads filled with debris limiting the delivery of needed humanitarian assistance and effective search and rescue. Four health centres have been submerged while the remaining ones are not accessible, and people travel long distances to access health care.

Combined with search and rescue, rapid assessments have been conducted revealing the extent of the flooding with some parts of Bududa district facing landslides.

The weather forecast by the Uganda National Meteorological Authority (UNMA) for the Elgon region for August 2022 has projected enhanced rains for the region with the possibility for the flooding challenges to continue.



In recent years, flood disaster occurrences in Uganda have become more frequent, particularly in the low-lying and built-up urban areas in the Eastern and South-western regions as well as in the areas near major water bodies of Lake Victoria, Lake Kyoga, and Lake Albert that were affected by flash-floods due to rising water levels. These flood events are causing more devastating effects. The high concentration of people in large cities is promoting the uncontrolled expansion of construction. Generally, June, July, and August are the wettest months in Uganda, and the situation is expected to worsen as the rainy season continues until the end of August 2022.

## Summary of the current response

### Overview of Operating National Society Response Action

At the onset of the disaster, the Uganda Red Cross Society (URCS) undertook the following actions:

- Deployment of Red Cross Action Teams (RCATs) to support search and rescue efforts who in turn helped in recovering 24 bodies in Mbale and Kapchorwa and rescued 101 people.
- Joint rapid assessments with Government authorities and partners on the ground to generate rapid reports updated every six (6) hours.
- Participated in eight Government-led district/city emergency meetings
- Mobilisation and dispatch of 1,000 essential household items distributed in Mbale reaching out to 1,000 HHs (5,900 people).
- Deployment of 5 ambulances and Emergency Medical Technicians/health staff who are so far supporting the evacuation and referral of 21 injured persons allowing them to receive timely medical care.



Figure 1: HHIs distribution in Bungokho Sub-County in Mbale

Overall, URCS has strengthened capacity on flood emergency response through previous flood response experiences. Right at the onset of the disaster, the URCS activated its Branch Disaster Response Teams (Red Cross Action Teams/RCAT) in Mbale, Kapchorwa, Sironko, and Kumi Branches which immediately and swiftly supported search and rescue efforts. This was followed by the deployment of three (3) ambulances that assisted in referral of the seriously injured persons to health facilities. As the situation deteriorated, URCS mobilised and deployed more volunteers including the National Response Teams (NRTs). Due to the level of injuries reported, more First Aid kits were deployed to complement those in the ambulances. Most of the evacuees escaped without salvaging anything, obliging URCS to distribute its disaster preparedness stocks prepositioned household items (HHIs) and other assets to 1,000 households.

In partnership with the government and other agencies like Catholic Relief Services, Malteser, World Health Organisation, UNICEF, IOM, National Water, and Sewage Cooperation, the Uganda Red Cross Society has supported in conducting initial assessments to determine the extent of damage/effects of the floods, needs of the affected population.

There were available resources within the country that could have been deployed to support the initial needs of the affected population, however, these resources are unfortunately currently constrained as detailed below:

- **ECHO HIP 2021 Crisis Modifier:** This was recently activated to support the needs of persons affected by floods in Kisoro district and the needs of DRC refugees in Kisoro, Kasese, and Bundibugyo before the IFRC launched a [DREF Operation](#) and now the [Emergency Appeal](#) which is still running in Southwestern Uganda.
- **Crisis Modifier from the Belgium Red Cross Flanders' funded Humanitarian protection (HP1) project:** This was recently activated to support food insecurity needs in the Karamoja sub-region in 2021 as well as additional support for WASH needs of DRC refugees in Kisoro and Kasese district.
- **ECHO HIP 2022 Crisis modifier under OXFAM/CRS/URCS consortium:** This is yet to be signed between Oxfam and ECHO, so cannot support the current response.
- **IFRC Early Action Protocol (EAP) funded by the Anticipatory Pillar of the DREF:** This is not applicable for activation towards this crisis due to the nature of the triggers and floods outlined in the documents. What was experienced is flash floods, not riverine floods detectable by the impact-based forecasting (IbF) system, the Ugandan flood trigger warning model. In addition, the EAP supports anticipatory actions for disasters with a minimum of a 5-year return period, which means annual flooding is not eligible for this type of funding. Flash floods are not in the EAP because they are much more difficult to predict and provide a very short lead time for action (a few hours generally). In the present situation, there was no indication from UNMA (daily, weekly, and

monthly forecast) of particularly intense precipitation in advance. Current Ibf reading indicates no threat for extreme flood event in the coming 5-days.

### Overview of Red Cross Red Crescent Movement Actions in country

Currently, the IFRC Operations Manager surge supporting the [Population Movement from DRC Emergency Appeal](#) is helping URCS in this response. His efforts are being complemented by technical guidance from various IFRC in-country delegates (health, IM, PMER, and finance) and the Disaster management delegate under the Juba Cluster Delegation.

To ensure proper monitoring of this operation and support to URCS, IFRC Disaster Management Delegate will increase monitoring visits throughout the operation while a PMER Surge will be deployed to work with the Operations Manager Surge already in-country. The IFRC is closely monitoring the flood situation in the country and stands ready to mobilize additional surge personnel to support the operation if the need arises. Through the [IFRC GO platform](#) and using the various channels, URCS ensures that all Movement partners are informed about all disaster/ emergency events and emergency operations being implemented in Uganda.

The International Committee of the Red Cross (ICRC) has an in-country presence and work closely with URCS. For this DREF operation, the URCS will engage the ICRC for technical support in the areas of Tracing in Emergency services, SAF training for RCATs, and promotion of EPR capacity of the Uganda Red Cross Society. However, no support has been provided to date from ICRC regarding the response to this flood's operation.

Partner National Societies (PNS) present in the country include the Netherlands Red Cross, Belgium Red Cross-Flanders, Austrian Red Cross, and the German Red Cross, who are directly providing technical and financial assistance to URCS' humanitarian and development projects targeting beneficiaries in the various parts of the country. None of the in-country PNS support is currently directed in the affected districts/ Branches in Eastern Uganda.

### Overview of other actors' actions in country

The Ministry of Disaster Preparedness and Relief in the Office of the Prime Minister (OPM) is taking the lead in coordinating the operation for all actors working in the affected districts. The Uganda Prime Minister conducted a field visit to Mbale on 1<sup>st</sup> August 2022 and chaired Mbale City Disaster Management Committee (CDMC) meeting held at the City Hall, where district civic and political leaders from all the affected districts were present, with representative from the Ministry of Health, Uganda Police Force (UPF), Uganda People's Defence Forces (UPDF) as well as development partners, including World Health Organization (WHO), Uganda Red Cross Society (URCS), Catholic relief Services (CRS), and Malteser International. During the meeting, the Minister gave a cash support of 10,000,000 UGX to the families which had lost loved ones and called on partners to support the intervention. Below was highlighted in the meeting.

- The Government through the Resident City Commissioner and OPM is engaging affected populations through radio talk shows on risk and dispatched 20,000 Kgs of Maize flour, 10,000 Kgs of dry Beans and 150 tarpaulins to Mbale City.
- The Ministry of Health and Malteser International has deployed three (3) standby divers to support the retrieval of the bodies while also activating their Emergency medical services.
- Mbale City has identified Namakwekwe Health Centre III as the Emergency treatment unit while Malteser International supports rapid assessment and preparation of the Readiness of the Mbale RRH casualty units. WHO dispatched one (1) trauma and one (1) Cholera Kits (supporting 100 patients) and one (1) consultant who is providing technical support to the region's health teams.
- The Mbale regional Public Emergency operations Centre held a partner debrief meeting at their EOC with Malteser International, Red Cross, WHO, and the Ministry of Health Emergency medical department on how to leverage on the structure for a regional Coordination
- National Water & Sewerage Corporation (NWSC) is working round the clock to restore the water supply system in Mbale City.
- The Government of Uganda through the Office of the Prime Minister (OPM) is planning a relocation program that will ensure that families living in high-risk areas are resettled to safer grounds. This, however, is a medium to a long-term plan

### Coordination of operations

Uganda Red Cross Society is participating in both internal and external coordination mechanisms. At the National level, the Ministry of Disaster Preparedness and Refugees in the Office of the Prime Minister (OMP) activated the National Emergency Coordination and Operations Centre (NECOC), where the Uganda Red Cross Society has been participating in weekly coordinating meetings. During these meetings, field updates and plans to provide well-coordinated response actions are shared. At the field level, the Ministry of Health has activated the Regional Public Health Emergency Operations Centre (PHEOC) which assists in gathering and harmonizing information related to the disaster. The Uganda

Red Cross Society has activated the National Task Force, headed by the Secretary-General who appointed a multi-skilled operational team at both regional and field levels. URCS' regional operational base is coordinated from Mbale Branch Offices which is closely linked to the Regional PHEOC. The respective Branch Managers of Mbale, Kapchorwa, Sironko, Kumi, and Bubulo are actively participating in the respective District Disaster Management Committee (DDMC) meetings being held in the affected districts of Mbale City, Kapchorwa, Sironko, Bulambuli, Bukedea, and Bududa.



Figure 2: Uganda Red Cross field staff participating in joint inter-agency assessment in Mbale. Phot credit: Uganda Red Cross

## Needs analysis, targeting, scenario planning, and risk assessment

### Needs analysis

As of 3<sup>rd</sup> August 2022, 24 bodies had been recovered with 22 returned to their families for dignified burial as per the situation report of 4 August 2022. Search and rescue efforts, as well as emergency medical services, are continuing with the combined efforts of the Uganda Police, Uganda People's Defence Forces (UPDF), and support of Uganda Red Cross Society, Ministry of Health, Malteser International, and the local community.



Figure 4: Uganda Red Cross volunteer undertaking search and rescue services in Mbale, Photo credit: Uganda Red Cross Society.

There is an urgent need to provide emergency shelter, food, and household items, water treatment, emergency latrines/Mobilets, Emergency medical services and social protection for the displaced households.

Estimated 5,000 acreages of cabbage, beans, maize, tomatoes, onions, coffee, bananas, rice & other horticultural crops were destroyed in addition to 600 cattle, 111 piggeries, 15 fishponds, and 4,500 poultry lost.

The floods have destroyed water facilities in the affected areas, completely cutting out water sources and thus leaving the displaced population at risk of water-related diseases. There is no water provision for the displaced in the hosting centres. The flooding destroyed latrines, and URCS will conduct detailed assessments to determine possible solutions. Meanwhile, displaced families will continue to use toilets at the hosting centres where basic sanitation services and items will be provided.

As of 3<sup>rd</sup> August 2022, the rapid needs assessment data collected by Mbale, Sironko, Kumi, Bubulo and Tororo Branches and those from the multi-sectoral assessment conducted by the various partners responding within the region revealed the following:

- Total of 3,748 households composed of 20,949 individuals have been affected in the 7 target districts. Out of this, URCS will target 1,547 households composed of 9,281 individuals with emergency assistance to support their lifesaving needs for an initial period of 3 months in three districts of Mbale, Bulambuli and Bukedea. The remaining households will be reached by other responding agencies.

- Flooding of many sub-counties in 6 districts: Mbale, Kapchorwa, Sironko, Bulambuli, Bukedea, and Butaleja with devastating effects on peoples' shelters, household items, farmlands, and livestock, as well as damages to infrastructures including breaking of water supply systems, health facilities, road network and bridges.
- Landslides occurred in Bududa district that destroyed peoples' houses, crop and farms.
- Hygiene and sanitation needs remain key since sanitation infrastructures, including family latrines and public sewer lines have been destroyed exposing faecal matter and contaminating open water sources and foods.
- Destruction of roads (degradation of roads), rendering them impassable.
- Loss of human lives. So far, a total of 24 deaths recorded by 3rd August 2022 (3 in Kapchorwa and 21 in Mbale district).
- Displacement of persons whose houses were completely or partially destroyed, or their homes flooded with water, with some living with host families within safer zones in the neighbourhood while others are currently living at IDP camps in nearby primary schools. Details on the disaggregation between the displaced in host families and those in IDP camps will be provided once a detailed assessment is conducted.

With the overflowing of rivers in most areas, there is a general fear of the occurrence of water-borne diseases such as cholera, diarrhoea, typhoid as well as a possible upsurge of malaria cases due to increased vector population in the flooded areas.

Ongoing field assessment being carried out might reveal more needs since heavy rains are continuing in most parts of the Elgon sub-region.

### Targeting

Through this operation, URCS will target 1,547 households composed of 9,281 most affected individuals living within the flood plain areas of the affected districts of Mbale, Bulambuli and Bukedea districts. They will be selected amongst those who have lost their houses, food crops, livestock, and most of their valuables due to the floods and mudslides. The targeted number represents 41% of the affected population while the remaining will be supported by other responding agencies.

TABLE SHOWING AFFECTED DISTRICTS AND RESPECTIVE POPULATION					
S/N	DISTRICT	AFFECTED POPULATION		TARGET POPULATION	
		Households	Population	Households	Population
1.	<b>Mbale</b>	<b>1,279</b>	<b>6,395</b>	<b>1,038</b>	<b>6,226</b>
2.	Sironko	480	2,400	0	0
3.	<b>Bulambuli</b>	<b>921</b>	<b>5,526</b>	<b>276</b>	<b>1,658</b>
4.	Kapchorwa	15	150	0	0
5.	<b>Bukedea</b>	<b>776</b>	<b>4,656</b>	<b>233</b>	<b>1,397</b>
6.	Bududa	209	1,672	0	0
7.	Butaleja	50	150	0	0
<b>Total</b>		<b>3,748</b>	<b>20,949</b>	<b>1,547</b>	<b>9,281</b>

**Source:** Primary data from URCS rapid needs assessment conducted in the affected districts within the first 3 days after incidents with some data being estimated due to limited access. This data will be revised as and when new information is available from planned detailed needs assessment. Highlighted in yellow, districts targeted by URCS.

In its selection criteria, URCS will aim to prioritise support for the most vulnerable and often socially excluded individuals, including the elderly, children, women-headed households, child-headed households, persons with disability, people with chronic illnesses, and single-parent-headed households. Volunteers and local authorities within these localities were consulted in this process of identifying and profiling the most vulnerable households to be targeted. URCS also aims to assist internally displaced families who do not have any means to obtain shelter. The beneficiary selection is verified at different levels to avoid double counting.

## Scenario planning

Scenario	Humanitarian consequence	Potential Response
<b>Scenario 1</b> The heavy rains stop by 10 August.	The number of households and individuals impacted remains stable and not increasing.	Continue to observe the trend and deploy Branch Disaster Response Teams to swiftly respond to the needs of the few affected households, in partnership with respective District Disaster Management Committees.
<b>Scenario 2</b> Rains continue to fall heavily for the next 10 days, until 20 August.	<p>Less than 8 districts are affected, resulting in the displacement of not more than 2,500 households composed of 15,000 individuals, including 2,000 households internally displaced and opting to live with host families and 500 in IDP sites.</p> <p>The destruction of 15 schools, 10 markets, and 12 health facilities are recorded, as well as the death or washing away of 100 heads of cattle, the destruction of 200 acres of farmlands.</p> <p>15 cases of separated and unaccompanied minors (UAMs), 30 cases of separated families, 20 cases of missing persons, less than 100 persons injured, with 25 deaths reported.</p> <p>Sporadic cases of cholera and an upsurge of malaria cases beyond the normal threshold is reported in the 8 affected districts.</p>	<p>This DREF will be implemented as planned and revised to adapt the strategy and budget to the new needs and changing operational requirements.</p> <p>URCS will continue to liaise closely with local and international partners, specifically RC\RC Movement partners and the UN agencies to mobilise additional resources to support the extra needs.</p>
<b>Scenario 3</b> Rains continue to fall heavily for next 20 days, until 31 August. Almost the whole country is affected.	<p>The extent of the flooding increases rapidly, affecting more than 10 districts simultaneously, leading to the displacement of more than 60,000 people, i.e. 10,000 households, including 6,500 households in host families and 2,500 households in resettlement sites.</p> <p>More than 50 individuals are reported injured, with SGBV cases among displaced persons increasing.</p> <p>More than 120 school buildings are reported to be flooded, leading to premature closure of schools and delays in reopening the next school term, which will affect the education of more than 240,000 learners.</p> <p>More than 50 health facilities were destroyed, 2,500 houses partially destroyed, and 1,700 houses destroyed, with 70 cases of disappearance.</p> <p>Contaminated wells, destroyed markets, impassable roads, and destroyed bridges are reported, as well as loss of livestock and breakdown of means of communications.</p> <p>Cases of separated families and unaccompanied children are reported. 1. URCS' response system is overwhelmed.</p>	<p>This DREF operation will be revised through an Operations Update to widen the scope of intervention, with a possible change of strategy, increased timeframe, and possibly a request for a second allocation.</p> <p>If the situation escalates further, this DREF shall later be transformed into an Emergency Appeal</p> <p>Additional resources to undertake early actions shall be provided through the approved Floods Early Action Protocol (EAP) based on early warning triggers for the next rainy season (SOND) or activating Simplified EAP if the trigger is not reached.</p>

## Operation Risk Assessment

- **Extension of flooded areas:** As the rainy season is ongoing, the water level may rise again and extend to additional localities. Rivers will not be cleared, and flooding will spread to all at-risk sub-counties in the targeted districts. This is because the Uganda National Meteorological Authority (UNMA) issued an early warning advisory for August 2022 following the earlier released seasonal weather forecast that predicts an increased rainfall for Northern and Eastern Uganda and parts of Western Uganda month of August 2022 with possible impacts, including flooding in low-lying areas and some parts of those situated near major water bodies.

In the event this risk materializes, URCS will conduct be guided by the results of a detailed needs assessment as well as continuous monitoring of the evolving situation to identify gaps, which may lead to the revision of the operational strategy of this DREF operation to cover newly affected districts and sub-counties in the target districts.

- **Health risks:** Given the context, there is a very high risk of the spread of water-borne and water-related diseases including Cholera, Typhoid fever as well as an upsurge of malaria cases due to the increased vector population. Destroyed or flooded water points and latrines increase the risk of contamination of water points, the lack of access to drinking water and sanitation facilities in the targeted departments. This can expose the affected population to oral-fecal diseases, including cholera, which has been detected in Mbale, Sironko, and neighbouring Bududa districts in recent years. URCS will ensure health and hygiene promotion through volunteers to reduce the health risks.
- **Security risks:** The security situation in the Mt Elgon sub-region is stable thus low-security concerns are expected in the flood-affected sub-counties and villages. However, if the heavy rains continue as predicted by UNMA, humanitarian access will be hampered by impassable road networks, especially within the high-hill areas of Kapchorwa and Bududa as well as low-lying areas of Butaleja, Bukedea, and Mbale. Currently, some villages remain inaccessible by road as they are completely cut off due to infrastructure damage and flooded communities thus hampering effective assessment. The URCS is engaging with Uganda Flying Lab. to deploy Unmanned Aerial Vehicles (UAVs) or Drones to support remote imaging and a better understanding of the scale of damage and searching for persons still missing or entrapped.

## B. Operational strategy

### Overall Operational objective

The overall objective of this operation is to provide emergency and early recovery assistance that improves the living conditions of 1,547 households (9,281 individuals) affected by the floods in the districts of Mbale, Bulambuli, and Bukedea over four months. The four months timeframe will allow proper completion of activities.

### Proposed strategy

To achieve the above objective, URCS will continue to support the efforts of Red Cross Action Teams (RCATs) in undertaking search and rescue services, and providing emergency household items to the displaced households. In addition, URCS will work with affected communities to improve water sanitation and hygiene (WASH), and community health and provide emergency food aid through cash and voucher assistance (CVA). The CVA will mainly focus on unconditional cash as well as ensuring the affected persons live in dignity and offered assistance without causing any harm to themselves and socio-cultural systems. The strategy is developed to cover the basic needs of the most vulnerable households affected by floods and landslide disasters for the first three months. The period and nature of assistance may be revised depending on the evolution of the flood disaster and the results of the detailed multi-sectoral assessments

#### a) Detailed Multi-sector Needs Assessment (Target: Mbale, Bulambuli, and Bukedea districts)

Since the flood situation is rapidly evolving, it is essential for responders to better understand the needs of the affected population. More information shall be collected on health, shelter, food insecurity and livelihoods, water sanitation and hygiene (WASH) as well as protection needs of the vulnerable persons living in the affected and at-risk communities. In the shelter sector, it is important to know whether people living in destroyed houses own them or are renting them, whether they have a permanent place to go and what the living conditions are in host families. Concerning food security and livelihoods, the assessment shall focus on the level of destruction of household food crops and livelihoods sources and how best to help affected households rebuild their livelihoods to help them build back better. For water sanitation and hygiene (WASH), continuous monitoring of the level of contamination of the water sources is necessary to determine the risk levels for the occurrence of diarrhoeal diseases. For community health, the epidemiological trends of common reportable diseases of epidemic potential will need to be monitored through the morbidity and mortality data recorded at health facilities within the affected and at-risk communities.

An in-depth multi-sectoral needs assessment will therefore be conducted in the three operational districts, starting on 8 August 2022 for two weeks. These assessments will be complemented by secondary information from government sources and reports from other humanitarian actors. Information gathered from the assessments will be shared during coordination meetings with the government and a copy of the findings to the IFRC by end of August 2022. A total of 150 volunteers have thus been deployed to Mbale, Bulambuli, and Bukedea districts to support the assessment, with their costs covered in this operation.

#### **b) Shelter and household items (Target: 1,000 HH or 5,900 people)**

Using cash and voucher assistance, URCS intends to reach to 500 extremely vulnerable households in Mbale who lost their houses. The support will help them to re-construct and or build temporary shelters at the new government relocation safe sites. An amount of UGX 315,000 will thus be disbursed to targeted families, calculated based on the minimum costs for 10 sheets of corrugated galvanized iron sheets roofing (enough for 10x10 m<sup>2</sup> shelter), labour and nails, although it is understood that families need additional support for tools, walling as well as training on building back safer. This transfer value is tentative, and the support aims to allow families to use the cash for purchasing their priority construction items.

URCS has three-year long contracts with 4 financial service providers including Stanbic Bank, MTN Uganda, Airtel Uganda and Post Bank Uganda. For this operation, the comparative bid analysis will be led by IFRC Juba Delegation which will provide close coordination during this process and cash disbursement to the beneficiaries. In addition, shelter training for 30 volunteers per target district and 10 skilled labourers per target district (120 people in total) will be conducted for 3 days, to raise awareness raising/training on safer building techniques including the Participatory Approach for Safe Shelter and Settlements Awareness (PASSA) and PASSA Youth. These newly acquired skills will be utilized to orient affected households to adopt safer shelter approaches (floods-tolerant houses) which will provide more resilience to continued floods.

Moreover, this DREF will replenish 1,000 HHs kits already distributed by URCS. These kits contain 2 blankets, 2 mosquito nets, 1 kitchen set, 1 tarpaulin, 2 jerricans, 2 bars of soap, 2 mats and 1 lamp, distributed to 1,000 households at the onset of the disaster. The distribution was conducted in a dignified manner to ensure no-harm to the environment and affected persons are recorded. To note, beneficiaries of the cash grants will be selected amongst those who have received household items.

Post distribution monitoring shall be conducted by 10 per district (30 in total) for 2 days, three (3) weeks after the distribution to determine the effectiveness of the cash disbursements and how effective the items would be utilised by beneficiaries. The PDM reports will guide the URCS in future re-packaging of HHI kit contents that meet needs of displaced persons.

#### **c) Livelihoods & basic needs (Target: 500 HH or 2,950 people)**

URCS will adopt the multipurpose cash and voucher assistance approach as the most appropriate to meet the food, livelihoods, and basic needs of the 500 flood most vulnerable affected and targeted households in the Elgon sub-region. The approach is based on the rapid assessment that informed the cash and voucher support feasibility among the affected communities. The cash value for this section is based on the expenditure and monetization of several agricultural inputs that resulted into UGX 37,705 /month/household per March 2020 Minimum Expenditure Basket (MEB). As such, each household which receive cash grants for shelter, will also receive cash to replace lost agricultural inputs, to support livelihoods restoration. The planned PGI sensitive CVA support will be a combination of mechanisms that will promote financial inclusion among target beneficiaries.

The district leadership will be engaged in the identification and selection of the most vulnerable HHs using an agreed targeting criteria jointly developed and validated up to the grass root level to minimise errors of inclusion and exclusion of rightful beneficiaries. Orientation of district disaster management committee in CVA approach will be conducted to promote buy-in, continuous monitoring, coordinating and ownership of URCS interventions within the region.

After every encashment and distribution of livelihood inputs Post Distribution Monitoring will be conducted to ensure assistance provided appropriately met basic needs and to inform the impact for decision making for improving the next tranche. There will also be continuous price market monitoring to determine risks of inflation to enable adjustment on the minimum expenditure basket.

#### **Cash disbursement for shelter and livelihoods restoration support to 500 households**

Number of transfers	Purpose			Number of Households
	Description	Amount per month	Amount for disbursement (UGX)	
One-off	Cash for shelter reconstruction support	315,000	352,705	500 households

	Cash for agricultural inputs	37,705		
--	------------------------------	--------	--	--

Overall, each of the 500 households targeted with cash support for shelter and livelihood restoration will receive a total one-off cash disbursement of UGX 352,705, which is equal to CHF 86.5.

#### d) Health (Target: 9,281 people or 1,547 HH)

Preliminary findings from the rapid assessment indicate that four (4) health facilities were submerged and have been impacted by flooding in the targeted villages. In addition to this, the displacement of populations to confined spaces in schools amid the COVID-19 pandemic reduces ability to practise social distancing. As such, the displaced population faces an increased risk of contracting communicable diseases. URCS will therefore train a team of 70 volunteers (30 in Mbale, 20 in Bulambuli, and 20 in Bukedea) on core modules of the community-based health and first aid (CBHFA) package, who will conduct health promotion sessions to share and discuss information on key diseases of epidemic potential and the recommended health habits.

Long Lasting Insecticide Treated mosquito nets will be distributed to mitigate the risk of malaria. These have already been distributed to 1,000 HHs as part of the household items which will be replenished through this DREF.

Psychosocial services are crucial for both the responding volunteers, staff, and the affected families. The staff and volunteers deployed in the various operational areas will often receive briefings and debrief sessions at the start and end of the operation in their respective regional branches.

Planned activities include:

- Provision of First Aid services
- Replenishment of 60 first aid kits to the three implementing branches
- Train 70 volunteers on CBHFA, which includes risk communication and community engagement (RCCE)
- Rapid deployment of 5 URCS Ambulances and Emergency Medical Teams (EMTs) to support the medical evacuation of injured persons for 7 days to support search and rescue
- Replenishment of medicines and consumables for ambulances
- Deployment of 3 Health in Emergency National Response Teams (HiE-NRTs) to provide technical assistance to Branches for 10 days in each location
- Provision of psychosocial support to all volunteers deployed and affected populations with PSS needs.

#### e) Water, Sanitation, and Hygiene (Target: 9,281 people or 1,547 HH)

The floods damaged water and sanitation facilities leaving the affected population at risk of water-related diseases such as diarrhoea. This has resulted in inadequate access to clean and safe water as well as inadequate access to proper sanitation facilities in the affected areas. The poor sanitation conditions in the hosting centres and stagnant pools of water provide a conducive environment for mosquito breeding that could increase incidences of malaria and waterborne diseases such as cholera. A limited number of water treatment tablets have been provided to the displaced population in the camps. URCS will therefore focus its WASH activities on the targeted 9,281 people aimed at improving access to safe water, access to improved hygiene activities, and disease prevention in the communities. The provision of Menstrual hygiene kits including dignity kit items will promote confidence in women and will allow them to continue their daily activities as usual, while preserving their hygiene. URCS will implement the following activities:

- i) Provision of water to affected persons:
  - Procure and distribute Aqua tabs for water purification, sufficient for 30 days. Based on Sphere standards, each person should have access to 5L of water per day. So, for a full month, each household will need 5L X 6 persons x 30 days, which sums up to 900 litres of water per month. Each tablet of Aquatabs is meant to purify 20litres of pure water, as it is not good for turbid water. Thus, each household needs 45 tablets of Aquatabs. Based on the above, a total of 69,615 tablets of Aquatabs will be procured and distributed to 1,547 households to serve for one month to purify the water provided by the Government.
  - Procurement of Chlorine Powder - HTH 75% concentration for disinfection of contaminated water sources. Water testing kits will need to be procured to ensure the safety of the water for drinking after treatment.
  - Train and set up water committees in management of water supplies and operation and maintenance of infrastructure (Water User Committees - WUC). Each district will have a WUC made up of 10 members.
- ii) Provision of sanitation:
  - Procure latrine cleaning kit for communal latrines (hard brushes, Liquid soap, Jik, heavy-duty gloves, squeezers, brooms)
  - Equip toilets with 10 communal handwashing facilities, anal cleansing material or water, and menstrual hygiene disposals and ensure they remain functional.

- Procure Hudson knapsack sprayers for vector control (15 units for 3 districts) with chemicals for environmental disinfection
- Procurement of 15 sanitation tool kits (hoes, spades, pickaxes, wheelbarrows, nylon rope, digging bar, metallic bucket) to be distributed to the implementing branches (5 per branch)
- Provision of dignity kits to 24% of the targeted females, i.e. 1,337 women and girls of childbearing age, to serve for 3 months. Each kit shall contain sanitary pads, panties, and bathing soap for women and girls.

iii) Provision of health and hygiene promotion awareness:

- Health and hygiene promotion sessions in the camps of internally displaced persons and affected villages by the volunteers (which is crucial to prevent water-borne disease outbreaks). This will be done once a week for 3 months by all 70 volunteers in 3 target districts.

#### **f) Protection Gender & Inclusion (PGI) including Community Engagement and Accountability (CEA)**

Protection, Gender & Inclusion (PGI) and Community Engagement and Accountability (CEA) activities are integrated and shall be implemented as complementary to the strategy proposed above.

CEA will be mainstreamed throughout the intervention to guarantee maximum and meaningful participation of the affected communities. CEA kiosks and help desks will be prepositioned for timely collection of all forms of Feedback/complaints/concerns from the affected persons to present their issues of concern freely and conveniently. The deployed Red Cross Action team members will listen and must act timely and appropriately. Aspects of sensitive feedback shall be handled bearing in the approved URCS referral channels. The kiosks and help desks will act as one information point for life-saving information including PSS, First Aid, PSEA, and PGI services and products. For clarity and a good flow of information, clear roles and responsibilities will be agreed upon with representatives, community leaders, and committees. The beneficiary selection process will be communicated to all affected. The use of community radios, Inbuilt Public Address Systems to relay pre-recorded live saving messages and advisories, hold television and radio shows on Water hygiene and health promotion, RFL, behaviour and social change actions, and social cohesion issues. Our frontlines will be instrumental in the dissemination of flood risks and safety measures for households, and disease prevention actions including ensuring appropriate shelter provisions remain prudent. Feedback on community behaviours and risk management strategies will inform evidence-based community actions by volunteers for the next steps.

#### **Operation Support Services**

**Logistics and supply chain:** IFRC, working in close collaboration with the UGRCS Logistics and Supply Chain Department, will provide technical support in line with operational priorities and per IFRC procedures.

- **Procurement plans:** Local procurement will be carried out in accordance with the IFRC and URCS standard procurement procedures. Current procurement plans will include procurement of non-food items including health and WASH items. URCS will work closely with known suppliers and IFRC Juba Delegation to ensure quality and value for money. A procurement plan to be developed to ensure timely support to the operation. URCS has warehouse capacity if needed.
- **Transport and fleet need:** The operation has budgeted fuel and vehicle maintenance costs to ensure transport needs are met.

**Planning, Monitoring, Evaluation, and Reporting (PMER):** Monitoring, evaluation, and reporting for the DREF operation will be benchmarked on the IFRC M&E Guide, and with the guidance of the URCS PMER framework, relevant documents and tools to guide implementation and measure the performance of the DREF shall be developed. Such tools shall include work plans, household questionnaires, interview guides, observation guides, indicator tracking tables, and action implementation monitoring forms, among others.

The data collection mechanism shall always prioritize the electronic approach using mobile phones with the KOBO platform. The M&E focal points in coordination with other actors shall augment the above information-gathering processes with impact studies targeting the community's perceptions of the services provided during the implementation of this operation.

Two approaches to monitoring implementation and data collection shall be used to measure the progress and effectiveness of the DREF; at the community level (effectiveness of action) and headquarter level (the efficiency of the internal processes). While the National Society shall ensure bi-monthly monitoring trips from relevant URCS HQ technical staff, the IFRC will conduct monthly field missions by DM and finance delegates. In addition, given the workload relating to procurement for replenishment of HHIs, the Cluster logistics & procurement officer will also conduct field support travel.

In addition to regular support supervision and review meetings, to measure the effectiveness and beneficiary impact, monitoring and evaluation of the operation shall engage the communities through household surveys and focus group discussions as well as conducting post distribution monitoring surveys. The PMER focal points shall develop the relevant tools in coordination with the DRM operation team to harmonize the methodologies and templates to deploy to collect such data, supervise the data collection process, analyse the data, and report on results. URCS volunteers shall be engaged to conduct data collection in the communities after conducting training in conducting interviews and data collection.

Regular updates shall be shared from the NS and operation updates on monthly basis. Lessons learnt shall be shared and published.

### **Security Situation Review**

Road safety and petty crime are the foremost risks to staff operating in Uganda. Nevertheless, the absence of government and security infrastructure in some remote parts of the country, particularly in the north-eastern Karamoja region, contributes to increased lawlessness and banditry, including cattle-rustling raids and roadside armed robbery. Although many rebel groups have withdrawn into central Africa, militant remnants present a potential security risk in border areas with Congo (DRC) and South Sudan. Border areas with Congo (DRC), including the districts of Arua, Nebbi, Bundibugyo, Kasese, Kanungu, and Kisoro, are prone to occasional instability. In addition, the twin bombings in Kampala in July 2010 by Somalia-based insurgent group al-Shabab highlighted the latent risk posed by occasional high-impact attacks by militant Islamist groups, including against 'soft' targets such as recreational facilities.

### ***RISK ZONES - Border areas with Congo (DRC), and South Sudan: HIGH***

The presence of demobilised militia groups in areas along the border with South Sudan, and the ease of border transit by armed bandits from that country continue to undermine the security environment along the frontier, where weapons proliferation and lawlessness is widespread. Business travellers in these areas face a moderate risk of kidnapping compared to the lower risks elsewhere in the country. If travel to the area is necessary, business travelers should ensure that they have a robust evacuation plan in place and implement strict security measures when travelling outside the main built-up areas of Gulu, and Kitgum because of the comparatively higher risk of kidnapping and prevalence of opportunistic armed bandits.

The continuing insecurity in the neighbouring Democratic Republic of Congo (DRC), and resultant refugee influx, have had an adverse effect on security in areas along the border with that country, particularly Arua, Nebbi, Bundibugyo, Kasese, Kanungu and Kisoro districts. However, the extensive security presence, particularly in and around popular tourist locations in the Western region, has been effective in deterring roaming armed groups from straying across the border. The activities of the rebel Allied Democratic Forces (ADF) have declined since the group was ousted from Ugandan territory into eastern Congo (DRC), though a renewed campaign by the group remains a latent risk.

The IFRC security plans will apply to all IFRC staff throughout. Area-specific Security Risk Assessment will be conducted for any operational area should any IFRC personnel deploy there; risk mitigation measures will be identified and implemented. All IFRC must, and RC/RC staff and volunteers are encouraged, to complete the IFRC Stay Safe e-learning courses, i.e., Stay Safe Personal Security, Stay Safe Security Management, and Stay Safe Volunteer Security online training. Minimum Security Requirements (MSR) is in place for Uganda.

The Cluster Security will manage the daily routine of the security management in support of the Cluster Office.

## C. Detailed Operational Plan



### Shelter

People targeted: 5,900

Male: 2,360

Female: 3,540

Requirements (CHF): 150,804

P&B Output Code	Shelter Outcome 1: Communities in disaster and crisis affected areas restore and strengthen their safety, well-being and longer-term recovery through shelter and settlement solutions	<ul style="list-style-type: none"> <li>• % of targeted households which have received shelter and HHIs support (Target: 63.5% or 1000 HH)</li> <li>• % of households which report satisfaction with the support received (Target: 80% of target HH)</li> </ul>															
		<ul style="list-style-type: none"> <li>• # of households that received HH items assistance (Target: 1,000 households)</li> <li>• # of households that received cash for emergency shelter support (Target: 500 HH)</li> <li>• # of multi-sectoral needs assessment carried out (Target: 01 assessment)</li> <li>• # of volunteers deployed for detailed assessment (Target: 150 volunteers)</li> </ul>															
	Activities planned Week	1	2	3	4	5	6	7	8	9	10	11	12	13	14	15	16
AP005	Assessment of shelter needs, capacities and gaps																
AP005	Coordination with government and other stakeholders																
AP005	Analysis of the local market to identify availability/access to shelter and household items																
AP005	Support targeted 500 households with cash for shelter																
AP005	Procure and replenish 1,000 HHIs distributed																
AP005	Monitoring of the use of distributed shelter and household items (PDM)																
P&B Output Code	Shelter Output 1.2: Technical support, guidance and awareness raising in safe shelter design and settlement planning and improved building techniques are provided to affected households	<ul style="list-style-type: none"> <li>• # of volunteers trained on safe shelter construction techniques (Target: 90 volunteers i.e. 30 per district)</li> <li>• # of skilled labourers trained on safe shelter construction techniques (Target: 30 skilled workers i.e. 10 per district)</li> <li>• # of PDM conducted (Target: 1 PDM)</li> </ul>															
		<ul style="list-style-type: none"> <li>• # of PDM conducted (Target: 1 PDM)</li> </ul>															
	Activities planned Week	1	2	3	4	5	6	7	8	9	10	11	12	13	14	15	16

AP006	Technical support provision build back safer guidance, awareness raising activities																			
AP006	Identification and mobilisation of volunteers for shelter intervention																			
AP006	Adoption of appropriate training material for awareness raising/training of volunteers																			
AP006	Awareness raising/training of shelter volunteers ( <i>For instance PASSA and PASSA Youth, safe construction techniques, on the job</i> )																			
AP006	Identification, assessment and analysis of appropriate and safe local building techniques/practices																			
AP006	Awareness raising/training on safe local building techniques to local builders																			
AP006	Monitoring and Evaluation of adoption of technical guidance																			



### Livelihoods and basic needs

People targeted: 2,950

Male: 1,180

Female: 1,770

Requirements (CHF): 7,016

P&B Output Code	Livelihoods and basic needs Outcome 1: Communities, especially in disaster and crisis affected areas, restore and strengthen their livelihoods	% of targeted households reached with cash support for livelihoods restoration (Target: 32% or 500 HH)																		
	Livelihoods and basic needs Output 1.5: Households are provided with unconditional/multipurpose cash grants to address their basic needs	<ul style="list-style-type: none"> <li># of people reached with cash for restoring livelihoods (Target: 2,950 people)</li> <li># of volunteers trained in CVA skills (Target: 30 volunteers)</li> <li># of DDMC members trained in CVA skills (Target: 15 persons)</li> <li>% of households reporting meeting basic need (Target: 80%)</li> </ul>																		
	Activities planned Week	1	2	3	4	5	6	7	8	9	10	11	12	13	14	15	16			
AP081	Train/orient 30 volunteers on Cash and voucher skills																			
AP081	Orient 15 District Disaster Committee members in CVA skills																			
AP081	Provide Multipurpose cash support to meet basic needs of 500 most vulnerable households for livelihoods restoration																			



## Health

People targeted: 9,281

Male: 3,712

Female: 5,569

Requirements (CHF): 23,563

P&B Output Code	Health Outcome 2: The immediate risks to the health of the affected populations are reduced through improved access to medical treatment	% of targeted households reached with health risks awareness messages (Target: 100% or 1,547 HH)															
	Health Output 2.1: Improved access to health care and emergency health care for the targeted population and communities.	<ul style="list-style-type: none"> <li>• # of volunteers trained on CBHFA (Target: 70 volunteers)</li> <li>• # of volunteers providing PSS (Target: 15, i.e. 5 per district)</li> <li>• # of PSS sessions conducted (Target: 3, i.e. 1 per district)</li> <li>• # of FA kits procured (Target: 60 FA Kits)</li> <li>• # of people reached with emergency response services (Target: TBD)</li> <li>• # of HiE-NDRTs deployed (Target: 3)</li> </ul>															
	Activities planned Week	1	2	3	4	5	6	7	8	9	10	11	12	13	14	15	16
AP022	Orient 70 volunteers in in CBHFA																
AP022	Procurement and distribution of 60 First Aid kits																
AP022	Procure 60 Body bags to support dignified recovery and burial of recovered bodies																
AP022	Rapid deployment of URCS Ambulances and Emergency Medical Teams (EMTs) to support medical evacuation of injured persons																
AP022	Replenishment of medicines and consumables for ambulances																
AP022	Deployment of 3 Health in Emergency National Response Teams (HiE-NRTs) to provide technical assistance to Branches on 3 rotations																
AP022	Reproduce and distribute IEC materials on community-based disease prevention, epidemic preparedness, and health promotion																



## Water, sanitation and hygiene

People targeted: 9,281

Male: 3,712

Female: 5,569

Requirements (CHF): 75,073

P&B Output Code	WASH Outcome1: Immediate reduction in risk of waterborne and water related diseases in targeted communities	<ul style="list-style-type: none"> <li>• % of targeted HH reached with WASH services (Target: 100% or 1,547 HH)</li> <li>• % of people with improved hygiene condition (80%)</li> <li>• % of people reached with sensitization (80%)</li> </ul>															
	WASH Output 1.1: Continuous assessment of water, sanitation, and hygiene situation is carried out in targeted communities	Multi-sectoral needs assessment carried out (Target: 3, i.e. 1 per district)															
	Activities planned Week	1	2	3	4	5	6	7	8	9	10	11	12	13	14	15	16
AP026	Orientation of URCS volunteers on carrying out water, sanitation and hygiene assessments																
AP026	Conduct initial assessment of the water, sanitation and hygiene situation in targeted communities																
AP026	Continuously monitor the water, sanitation and hygiene situation in targeted communities																
AP026	Coordinate with other WASH Partners on target group needs and appropriate response.																
P&B Output Code	WASH Output 1.2: Daily access to safe water which meets Sphere and WHO standards in terms of quantity and quality is provided to target population	<ul style="list-style-type: none"> <li>• # of targeted people reached with WASH services (Target: 9,281 people)</li> <li>• # of chlorine buckets procured (Target: 15 HTH buckets)</li> <li>• # of water testing kits procured (Target: 3 kits)</li> <li>• # of WUC committees set up (Target: 3, i.e. 1 per district)</li> <li>• # of PDMs conducted (Target: 1 PDM)</li> </ul>															
		Activities planned Week	1	2	3	4	5	6	7	8	9	10	11	12	13	14	15
AP026	Procure and distribute household water purification chemicals (sachets) sufficient for 30 days to 1,547 HTHs.																
AP026	Procurement of Chlorine Powder - HTH 75% concentration for disinfection of contaminated water sources																
AP026	Procurement of 3 water testing kits																
AP026	Train water committees in management of water supplies and operation and maintenance of infrastructure (Water User Committees)																

AP026	Monitor treatment and storage of water through household surveys and household water quality tests /surveillance.																	
P&B Output Code	<b>WASH Output 1.3: Adequate sanitation which meets Sphere standards in terms of quantity and quality is provided to target population</b>	<ul style="list-style-type: none"> <li>• # of latrine sanitation kits procured (Target: 15, i.e. 5 per district)</li> <li>• # of communal handwashing facilities (Target: 10)</li> <li>• # of sprayers procured (Target: 15)</li> <li>• # of environmental hygiene kits procured (Target: 15)</li> <li>• # of MHM kits procured and distributed to women and girls of childbearing age (Target: 1,337)</li> <li>• # of volunteers deployed for sanitation activities (Target: 70 volunteers)</li> </ul>																
		Activities planned Week	1	2	3	4	5	6	7	8	9	10	11	12	13	14	15	16
AP028	Procure latrine cleaning kit for communal latrines (hard brushes, Liquid soap, Jik, Heavy duty gloves, squeezers, brooms)																	
AP028	Equip toilets with communal handwashing facilities, anal cleansing material or water and menstrual hygiene disposals and ensure they remain functional.																	
AP028	Procure Hudson knapsack sprayers for vector control (15 units) with chemicals																	
AP028	Procurement of sanitation tool kits (Hoes, Spades, Pickaxes, Wheelbarrows, nylon rope, digging bar, metallic bucket)																	
AP028	Deployment of 70 volunteers in 3 districts for 10 days, covering sanitation activities																	
AP028	Procure and distribute 1,337 reusable MHM kits to women and girls of reproductive age																	
P&B Output Code	<b>WASH Output 1.4: Hygiene promotion activities which meet Sphere standards in terms of the identification and use of hygiene items provided to target population</b>	# of sensitization sessions conducted (Target: 12 sessions)																
		Activities planned Week	1	2	3	4	5	6	7	8	9	10	11	12	13	14	15	16
AP030	Health and hygiene promotion campaigns on prevention and control of common communicable diseases such as Malaria, Acute Watery Diarrhoea, Bloody Diarrhoeas, Dermatitis and other outbreaks likely to occur during emergency situations (70 vols x 3 districts * 12 weeks)																	



## Protection, Gender, and Inclusion

People targeted: 9,281

Male: 3,712

Female: 5,569

Requirements (CHF): 1,558

P&B Output Code	Protection, Gender & Inclusion Outcome 1: Communities become more peaceful, safe and inclusive through meeting the needs and rights of the most vulnerable.	<ul style="list-style-type: none"> <li>% of persons that benefited from PGI sensitization training sessions (Target: 70%)</li> <li>% of persons reached with lifesaving messages and alerts (Target: 70%)</li> </ul>															
	Protection, Gender & Inclusion Output 1.2: Programmes and operations prevent and respond to sexual- and gender-based violence and other forms of violence especially against children.	<ul style="list-style-type: none"> <li># of communities that benefited from services provided (Target: 3 districts)</li> </ul>															
	Activities planned Week	1	2	3	4	5	6	7	8	9	10	11	12	13	14	15	16
AP033	Support sectoral teams to include measures to address vulnerabilities specific to gender and diversity factors (including people with disabilities) in their planning (10 vols/district)																
AP033	Support sectoral teams to ensure collection and analysis of sex-age and disability-disaggregated data (see guidance in Minimum Standards) with 10 vols/district for 5 days																
AP033	Use Minimum Standards as a guide to support sectoral teams to include child protection and measures to mitigate the risk of SGBV																
AP033	Participate in the GBV and protection working group meetings/forums																

## Strategies for Implementation

Requirements (CHF): 113,480

P&B Output Code	S1.1: URCS capacity building and organizational development objectives are facilitated to ensure that National Societies have the necessary legal, ethical and financial foundations, systems and structures, competences and capacities to plan and perform	# of volunteers mobilised (Target: 70 volunteers)															
	Output S1.1.4: National Societies have effective and motivated volunteers who are protected																
	Activities planned Week	1	2	3	4	5	6	7	8	9	10	11	12	13	14	15	16

AP040	Ensure that 70 volunteers are insured (IFRC volunteer insurance scheme)																		
AP040	Provide complete briefings on volunteers' roles and the risks they face																		
AP040	Provide psychosocial support to volunteers																		
AP040	Ensure volunteers' safety and wellbeing																		
P&B Output Code	<b>Outcome S2.1: Effective and coordinated international disaster response is ensured</b>	<b># of IFRC surge deployed (Target: 1 PMER surge)</b>																	
	<b>Output S2.1.1: Effective and respected surge capacity mechanism is maintained.</b>	<b># of NDRTs deployed (Target: 4) # of NS monitoring visits (Target: 8 visits) # of IFRC monitoring visits (Target: 4 visits)</b>																	
	Activities planned Week	1	2	3	4	5	6	7	8	9	10	11	12	13	14	15	16		
AP046	IFRC Surge deployment (PMER)																		
AP046	Deploy Relief National Response Teams (NRTs) to support field operational requirements																		
AP046	NS Monitoring visits																		
AP046	IFRC Monitoring visits																		
AP042	Conduct a lessons learned workshop																		
AP084	Exit strategy developed that includes community consultation and sharing of the final evaluation results with the community																		

## Funding Requirements

The overall funding allocated for implementation of this operation is CHF 371,495 as detailed in budget below.

International Federation of Red Cross and Red Crescent Societies

*all amounts in Swiss Francs  
(CHF)*

## DREF OPERATION

MDRUG046 - UGANDA - FLASH FLOODS & LANDSLIDES

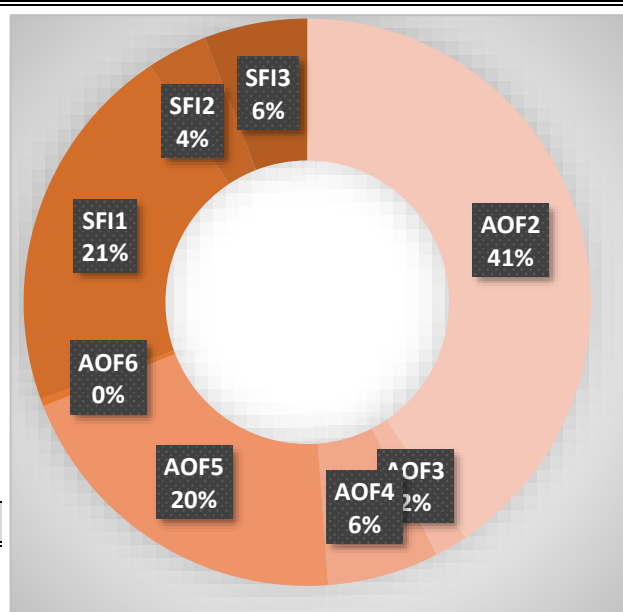
09/08/2022

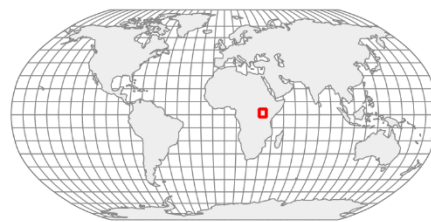
### Budget by Resource

Budget Group	Budget
Shelter - Relief	87,500
Clothing & Textiles	2,960
Water, Sanitation & Hygiene	50,017
Medical & First Aid	15,675
Teaching Materials	4,563
Cash Disbursement	44,088
<b>Relief items, Construction, Supplies</b>	<b>204,802</b>
Transport & Vehicles Costs	21,199
Logistics Services	10,511
<b>Logistics, Transport &amp; Storage</b>	<b>31,710</b>
National Society Staff	5,400
Volunteers	29,163
<b>Personnel</b>	<b>46,563</b>
Workshops & Training	13,025
<b>Workshops &amp; Training</b>	<b>13,025</b>
Travel	12,000
Office Costs	3,150
Communications	1,750
Financial Charges	2,375
Other General Expenses	33,447
<b>General Expenditure</b>	<b>52,722</b>
DIRECT COSTS	348,822
INDIRECT COSTS	22,673
<b>TOTAL BUDGET</b>	<b>371,495</b>

### Budget by Area of Intervention

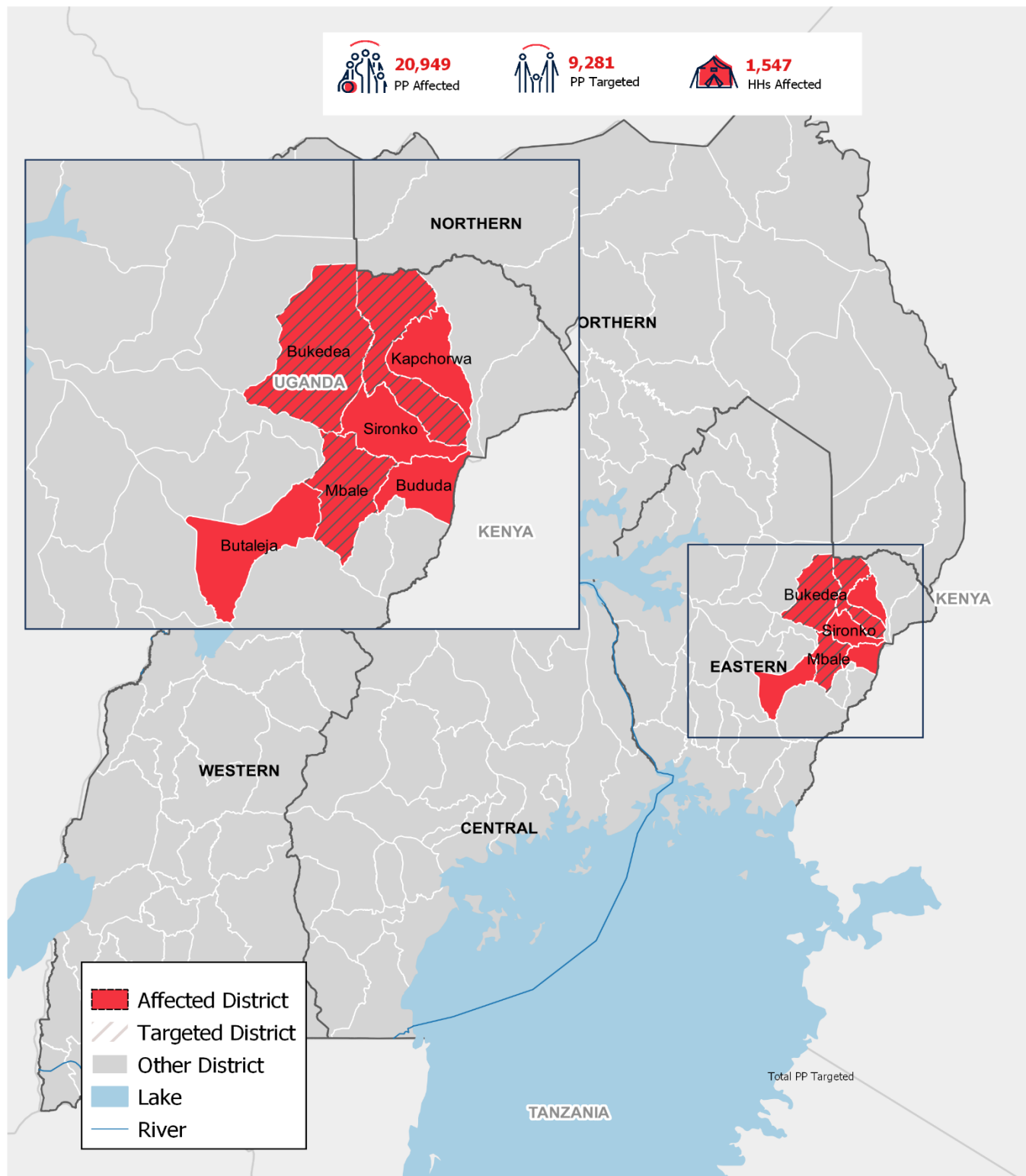
AOF2 Shelter	150,804
AOF3 Livelihoods and Basic Needs	7,016
AOF4 Health	23,563
AOF5 Water, Sanitation and Hygiene	75,073
AOF6 Protection, Gender and Inclusion	1,558
SFI1 Strengthen National Societies	78,856
SFI2 Effective International Disaster Management	12,780
SFI3 Influence others as leading strategic partners	21,844
<b>TOTAL</b>	<b>371,495</b>





Uganda : Floods

9 August 2022 • FL-2022-000275-UGA



The maps used do not imply the expression of any opinion on the part of the International Federation of the Red Cross and Red Crescent Societies or National Societies concerning the legal status of a territory or of its authorities.  
 Map data sources: GADM, Uganda RC, IFRC. Map produced by: IFRC Africa Regional Office, Nairobi

## Contact information

Reference documents

Click here for:

**For further information, specifically related to this operation please contact:**

### In the Uganda Red Cross Society

- Secretary-General, Robert KWESIGA, [sgurcs@redcrossug.org](mailto:sgurcs@redcrossug.org) +256772 638890
- Director DRM, Dr Brian K. Mwebaze, Director, Disaster Risk Management, +256782926851, [bkanaahe@redcrossug.org](mailto:bkanaahe@redcrossug.org)

### In IFRC Country Cluster Support Team:

- Pape Moussa TALL, Head of Delegation, Juba Cluster Delegation, phone: +211 91 217 9511; email: [papemoussa.tall@ifrc.org](mailto:papemoussa.tall@ifrc.org)
- Daniel Mutinda, Disaster Management Delegate, Juba Cluster Delegation, phone: +211 918924507 Email: [Daniel.MUTINDA@ifrc.org](mailto:Daniel.MUTINDA@ifrc.org)

### IFRC Africa Region Office

- Rui Alberto Oliveira, Acting Head of Disaster Crisis Prevention, Response and Recovery Department, Nairobi, Kenya; phone +351914758832; email: [Rui.OLIVEIRA@ifrc.org](mailto:Rui.OLIVEIRA@ifrc.org)

### IFRC in Geneva

- Rena IGARASHI, Operations Coordination, Senior Officer, DCPRR Unit Geneva; email: [Rena.IGARASHI@ifrc.org](mailto:Rena.IGARASHI@ifrc.org) ,
- Eszter MATYEKA, Senior DREF Officer, DCPRR Geneva Unit; email: [eszter.matyeka@ifrc.org](mailto:eszter.matyeka@ifrc.org)

### For IFRC Resource Mobilization and Pledges support:

- Louise DAINTREY-HALL, Head of Partnership and Resource Development, phone: +254 110 843 978; email: [louise.daintrey@ifrc.org](mailto:louise.daintrey@ifrc.org)

### For In-Kind donations and Mobilization table support:

- IFRC Africa Regional Office for Logistics Unit: RISHI Ramrakha, Head of Africa Regional Logistics Unit, email: [rishi.ramrakha@ifrc.org](mailto:rishi.ramrakha@ifrc.org) phone: +254 733 888 022

### For Performance and Accountability support (planning, monitoring, evaluation and reporting enquiries)

- IFRC Africa Regional Office: Philip Komo Kahuho, Regional Head PMER and Quality Assurance r, Email: [Philip.kahuho@ifrc.org](mailto:Philip.kahuho@ifrc.org)

## How we work

All IFRC assistance seeks to adhere to the **Code of Conduct** for the International Red Cross and Red Crescent Movement and Non-Governmental Organizations (NGO's) in Disaster Relief and the **Humanitarian Charter and Minimum Standards in Humanitarian Response (Sphere)** in delivering assistance to the most vulnerable. The IFRC's vision is to inspire, **encourage, facilitate and always promote all forms of humanitarian activities** by National Societies, with a view to **preventing and alleviating human suffering**, and thereby contributing to the maintenance and promotion of human dignity and peace in the world.