

<b>DREF Operation n°</b>	MDRLA008	<b>Glide n°:</b>	<a href="#">FL-2022-000292-LAO</a>
<b>Date of issue:</b>	24 August 2022	<b>Expected timeframe:</b>	4 months
		<b>Expected end date:</b>	31 December 2022
<b>Category allocated to the of the disaster or crisis:</b> Yellow			
<b>DREF allocated:</b> CHF 197,135			
<b>Total number of people affected:</b>	42,550 people	<b>Number of people to be assisted:</b>	15,000 people (3,000 households)
<b>Provinces affected:</b>	8 provinces (Huaphan, Xayabouly, Borkeo, Luangprabang, Vientiane Capital, Salavan, Savanakhet, and Champasak)	<b>Provinces/Regions targeted:</b>	3 provinces (Champasak, Salawan, and Xayabouly)
<b>Operating National Society presence (n° of volunteers, staff, branches):</b> Lao Red Cross (LRC) consists of a national office, 18 provincial branches and 65 district chapters. It has around 885 volunteers and 589 paid staff members. The LRC has mobilized its staff and volunteers to provide relief assistance to the affected households in Champasak, Salawan, and Xayabouly provinces.			
<b>Red Cross Red Crescent Movement partners actively involved in the operation:</b> The International Federation of Red Cross and Red Crescent Societies (IFRC) will provide financial (DREF) and technical assistance to LRC in implementation of the activities and in distribution of relief assistance planned under this emergency operation. Swiss Red Cross has also in-country presence and provides financial and technical assistance to Disaster Risk Management programming of Lao Red Cross.			
<b>Other partner organizations actively involved in the operation:</b> The public departments such as Ministry of Labour and Social Welfare and the National Disaster Management Office (NDMO) are engaged with the response and have been supporting the populations affected by recent flooding.			

## A. Situation analysis

### Description of the disaster

Early August, heavy rains hit Laos countrywide followed by a tropical storm that caused widespread floods in North, Central, and Southern Laos. The Ministry of Labour and Social Welfare released an official report on 15 August 2022 that eight provinces (Huaphan, Xayabouly, Borkeo, Luangprabang, Vientiane Capital, Salavan, Savanakhet, and Champasak) were affected. The rainfall brought widespread flooding and landslides causing roads to become impassable, water and electricity supplies have been cut and many residents evacuated. In Xayabouly, the Houng River overflowed, swamping riverside villages and partially submerging houses. People who have been forced to leave their homes now need clothing, food and drinking water amongst other needs described in the needs assessments, while authorities are assessing the extent of the flooding and collecting information about the number of people affected.

As of 15 August 2022, based on the initial assessment conducted by the Ministry of Labor and Social Welfare, the NDMO with the participation of LRC for each branch, it was highlighted that 185 villages in 27 districts, in 8 provinces, with an estimated 10,131 households (42,550 people) affected. There were one death and two injuries. The table below

provides the most up-to-date information provided by LRC (received from Ministry Labor and Social Welfare). The assessment of affected people is still ongoing, and the figures presented in the table are expected to change soon.

#### Summary of the affected population as of 15 August 2022 - source: LRC

Province	No. of affected districts	No. of Affected villages	No. of Affected households	No. of Affected people	No. of Dead	No. of injured	No. of People Missing
1.Xayabouly	6	33	1,153	5,765	1	2	-
2.Huaphan	5	11	79	472	-	-	-
3. Borkeo	5	0	33	132	-	-	-
4.Luangprabang	2	3	43	172	-	-	-
5.Vientiane capital	1	30	1,154	4,616	-	-	-
6.Savanakhet	1	10	201	804	-	-	-
7.Salavan	5	98	6,751	27,004	-	-	-
8.Champasak	2	3	717	3,585	-	-	-
<b>Total</b>	<b>27</b>	<b>188</b>	<b>10,131</b>	<b>42,550</b>	<b>1</b>	<b>2</b>	<b>-</b>



Houses flooded in Xayabouly, August 2022 (Photo: LRC)

## Summary of the current response

### Overview of Operating National Society Response Action

LRC' branches in affected provinces have been working closely with the labor and social welfare departments to join the needs and damage assessment to obtain information and shared the primary data with headquarters. However, due to the limited accessibility, some branches have yet to complete the assessment. As the situation evolves, LRC staff will continue to join assessments with the provincial governments. Due to a lack of necessary logistics support (such as boats) and due to the severity of the condition whereby in some areas the flood water is still high, there are delays in accessing the affected areas and in collecting detailed data about the impacts of floods and the needs of affected population.

In three provinces (Champasak, Salavan, and Xayabouly), based on the needs on the ground and the request from local authorities, the LRC has already commenced assessments on 20 August to select 3,000 households, severely affected by floods, to provide them with relief assistance. LRC, using prepositioned relief items in its warehouses, will distribute food baskets to 1,153 households in Xayabouly province, hygiene kits to 1,130 households in Salavan province, and kitchen sets to 717 households in Champasak province. On 21 August, distributions commenced in around 11 villages in two districts and will progress as assessments are carried out. As of 23 August 2022, kitchen sets have been distributed to 87 households in Ban Dou village, Phonthong district, Champasak province. In addition, Relief kits (food baskets) have been distributed to 200 households in 10 villages, Parklai district, Xayabouly province.

Summary of LRC actions (as of 23 August) is as follows:

Branch	Actions undertaken
1.Xayabouly	Assessments to distribute relief kits (food baskets)
2.Huaphan	Coordination with location authorities, damage and needs assessment progressing
3. Borkeo	Coordination with location authorities, damage and needs assessment progressing
4.Luangprabang	Coordination with location authorities, damage and needs assessment progressing
5.Vientiane capital	Coordination with location authorities, damage and needs assessment progressing
6.Savanakhet	Coordination with location authorities, damage and needs assessment progressing
7.Salavan	Assessments for distribution of hygiene kits.
8.Champasak	Assessments for distribution of kitchen sets.

The result of damage and needs assessments, currently happening in the remaining affected provinces by LRC staff and volunteers, and coordination with local authorities will inform whether LRC will expand its response and relief distribution activities to those provinces or not.



Relief kit distribution site in Xayabouly province (Photo: LRC)



Beneficiary receiving kitchen set in Champasak province (Photo: LRC)

### Overview of Red Cross Red Crescent Movement Actions in country

IFRC Country Cluster Delegation (CCD) based in Bangkok, Thailand is supporting LRC, in close collaboration with the IFRC Asia Pacific Regional Office based in Kuala Lumpur, Malaysia. One staff member from the Bangkok office has been deployed to assist LRC's headquarters, including developing an Emergency Plan of Action (EPoA) and budget plan for a DREF application and playing a key role in Movement coordination with the Swiss Red Cross (SRC). LRC has held a coordination meeting to discuss the planning and response to the floods; these meetings were attended by IFRC and the Swiss Red Cross. Amongst others, these meetings also informed the decision of LRC to request DREF support.

### Swiss Red Cross

Swiss Red Cross is present in Laos PDR and will work with LRC at their headquarters and Luangprabang branch. Swiss Red Cross has implemented a series of capacity-building activities (e.g, training for LRC staff on Disaster Risk Management, preparedness and response) in the Phonexay and Pakxeng districts in Luangprabang. Thanks to those capacity-building activities, the LRC team in Luangprabang was able to quickly respond and distribute relief items to affected households in three districts: XiengNgeun, Phonexay and Pakxeng.

### Overview of other actors' actions in country

At this stage, provincial authorities are working on localized responses to support the affected population. The LRC teams have been supporting the NDMO in implementing damage and needs assessments in affected provinces. In addition, the Ministry of Labour and Social Welfare together with the Ministry of Defence deployed around 600 military personnel to assist with relief efforts at the beginning of the floods.

## Needs analysis, targeting, scenario planning and risk assessment

### Needs analysis

Data related to the needs of the affected population is currently limited across all sectors. However, the Ministry of Labour and Social Welfare has identified the most urgent needs to be food, water, household items, hygiene kits and medicines, as well as boats and equipment to support the ongoing search and rescue operation (by the government).

Risk factors related to vector and water-borne diseases such as dengue fever, malaria, and diarrhoea have also been elevated as people affected now have limited access to safe water for drinking and hygiene, and appropriate sanitation facilities. According to an official health ministry report, the number of dengue fever cases continues to rise in Laos as the tally has surpassed 18,000 people and 17 deaths in August 2022.

There has also been extensive damage caused to infrastructure. Agricultural land has also been inundated and assets are either lost or damaged, which can be expected to impact food security and livelihoods.

The LRC has requested this DREF support with two specific objectives. 1) This DREF operation will support the implementation of damage and needs assessment in provinces affected by floods. This damage and needs assessment is a joint assessment, which is being led by the Ministry of Labour and Social Welfare and NDMO. The reports from these assessments will inform whether the LRC to expand its response interventions to other flood-affected provinces or not. 2) This DREF operation will also support procurements that will happen for replenishment purposes. LRC, using the prepositioned items in its warehouses, has commenced distribution activities. Hence, LRC will do the procurements to replenish its warehouses. Further details are provided under the section of Operation Strategy on page 5.

### Targeting

As of this allocation request, the LRC intends to reach 3,000 vulnerable affected households (around 15,000 people) in Champasak, Salawan, and Xayabouly provinces. The LRC together with collaboration from the Department of Labour and Social Welfare, in each province, is leading the overall coordination of the needs assessment and will support the affected households. However, for this operation, the LRC will immediate relief assistance to 3,000 households – Champasak: 717 households, Salawan: 1,130 households, and Xayabouly: 1,153 households.

As highlighted earlier, LRC and the Department of Labour and Social Welfare have been implementing needs assessments in all the provinces affected by recent floods. The reports of those assessments will inform whether the LRC should expand its response activities to other provinces or not. If there are needs and those needs are not covered by public departments, LRC will request further DREF allocation to increase its response activities and to cover the gaps in those locations. An operational update will be developed to provide detailed analysis and information from the provinces that will require support from LRC.

### Scenario planning

The situation is continuing to evolve, with search and rescue operations by the government continuing as of 15 August 2022. The affected population can be expected to increase as needs assessments are finalized.

Scenario	Humanitarian consequence	Potential Response
COVID – 19 cases increase	Low impact. Volunteers and staff of LRC were able to conduct the prevention measure of Covid19	Incorporate COVID safe response and ensure all volunteers follow proper social distancing and have proper personal protective equipment.
Dengue	Middle impact: Dengue fever is considered a year-round and nationwide risk in Laos, with the highest risk typically during the rainy season which falls May through September.	LRC will expand its operation on Hygiene promotion and dengue fever.
The floods situation worsens	Additional number of people affected by the floods and increased needs for humanitarian assistance.	LRC will expand its operation and request for additional funding support from IFRC and partners.
Another tropical storm makes landfall nearby	Additional number of people affected by the floods and increased needs for humanitarian assistance.	LRC will expand its operation and request for additional funding support from IFRC and partners.

### Operation Risk Assessment

The LRC has good access to all parts of the country, including the geographically hard-to-reach areas. Good access by LCS is based on wide acceptance from all stakeholders and the organizational structure of LRC (high number of volunteers from affected communities). For providing humanitarian relief in any emergency and/or disaster context:

- LRC and IFRC will ensure that the design, planning, implementation and monitoring of LRC programmes incorporate acceptance as a core approach to gain safe access in the communities in both emergency humanitarian relief and development contexts.
- All components of IFRC's Principles and Rules for Red Cross Red Crescent Humanitarian Assistance are fully integrated into the programme design and implementation and adopted by all staff.
- Community engagement will be conducted in the target areas by having regular consultation meetings, and gatherings with key influential stakeholders explaining the impartiality, neutrality, transparency of LRC, and information about programme goals, timeline, and other relevant programme information before starting the programme.

To mitigate the risks to the LRC and IFRC programmes and personnel, LRC and IFRC are continuing to work on a complex approach of acceptance by engagement with all parties and stakeholders, clear and strict security protocols and procedures as well as continue to extend its partner's engagement and capacity. This is in combination with continued analysis and a low-profile approach. LRC and IFRC have dedicated trained security staff regularly visiting affected areas to provide training and support to field staff on the safe delivery of project activities.

The table below includes some potential risks anticipated and the mitigation measures LRC and IFRC will operationalize.

Potential risk	Mitigation measure
Injuries or loss of life of staff or volunteer due to collateral damage.	Ensure availability of first aid kit in vehicles, first aid-trained staff, keep distance from potential targets, real-time monitoring of the situation and advising staff and volunteers, communication of activities and movement with all stakeholders, use of protective emblem, Critical Incident Management and Emergency plans in place, movement monitoring.
Perception issues related to the conduct of the operation or activities which may impact the access and acceptance of LRC.	Ensuring the dissemination of LRC operation, the activities, its approach, including the methodology of selecting people to receive assistance to all stakeholders. For community-based distribution activities, proper communication with the communities will be maintained. Sensitisation meetings with community elders and members will be used to manage crowd control. Sensitisation meetings will discuss the nature of the assistance, exact targeted locations, the type of assistance, time, date, and venue of distribution as well as the distribution process with beneficiaries and was duly incorporated their feedback.
Staff or volunteers abducted/ kidnapped due to disputes between the stakeholders.	Awareness sessions of staff and volunteers, clear communication of neutral, independent, and impartial humanitarian action (NIHA) nature of the organization to all stakeholders, monitoring of the situation, daily communication with all stakeholders, training of the staff and volunteers on actions in critical situations, avoiding of disputed areas, movement monitoring.
Extortion or robbery of staff or volunteers due to the existence of criminal groups or illegal checkpoints.	Advise staff and volunteers not to carry valuables and to comply with requests, use of protective emblem, real-time communication with all stakeholders, monitoring of the situation, and releasing advisories to staff and volunteers accordingly.
Risks associated with community-based in-kind distribution activities.	LRC will put in place crowd control mechanisms, including gender-segregated queuing structures outside of the distribution centres, and will mark queues using hazard tape inside the distribution centres. LRC will invite people to receive assistance to come to the distribution centres in groups, thereby reducing the amount of time they must spend queuing outside.
COVID-19 context.	To mitigate the spread of COVID-19 and to ensure the safety of the people receiving assistance and the staff who will be involved in distributions, the COVID-19 SOP will be followed, and physical distance maintained. Moreover, masks, handwashing facilities, and sanitisers will be available in distribution sites.
Health related risks: water-borne diseases (cholera, malaria, and Dengue fever): Given the context, there is a risk (in some area) of the spread of water-borne diseases consisting of faecal-oral diseases, water-related diseases and aquatic diseases.	LRC together with volunteers at branches will provide health promotion sensitization to affected people in targeted communities, the topic should cover water-borne diseases consisting of fecal-oral diseases, water-related diseases and aquatic diseases including dengue which is common in Laos. They will inform families about the risks of transmission and about cleaning their homes and surroundings, remove stagnant water and curb pollution. In case of suspicion, they will inform the local health authorities to prevent the spread of a potential epidemic at an early stage. Volunteers will be given information on how to properly protect themselves against waterborne diseases and will be provided with protective equipment such as alcohol gel.

## B. Operational strategy

### Overall Operational objective:

The operation aims to enable 3,000 households (15,000 individuals) severely affected by floods to meet their immediate food and non-food basic needs. This will be realized through the implementation of emergency shelter, livelihoods, and water, sanitation and hygiene (WASH) activities in three target provinces - Champasak, Salawan, and Xayabouly.

The operation strategy/plan includes the following **three components**:

#### (i) Distribution of relief assistance to 3,000 households in three provinces.

Public departments (Labour and Social Welfare and the NDMO) have asked the LRC to support in the provision of relief assistance to 3,000 households in three provinces. More details:

- Champasak: LRC will support in distributing essential household items (kitchen sets) to 717 households in need. Rest of the needs including food, water, and hygiene promotion are covered by other service providers including the public departments.
- Salawan: LRC is requested to support 1,130 households with hygiene promotion activities. Hence, the LRC will provide comprehensive hygiene kits to 1,130 households and will implement community-based hygiene promotion activities.
- Xayabouly: LRC will support the local authorities by providing relief kits (food baskets) to 1,153 households. The water, shelter, and hygiene needs, in this province, are covered by public departments.

It is worth explaining that the LRC will use the relief items prepositioned in its warehouses to distribute to target households in three provinces as noted above. Under this DREF operation, LRC will do the planned procurements to replenish the items to its warehouses.

#### (ii) Procurement of relief items for replenishment purposes

The procurement activities planned under the shelter, livelihoods, and WASH component of this operation are for replenishment purposes. Because the LRC will use items such as hygiene kits, essential household items (kitchen sets), and food baskets from its warehouses, the procurements will replenish these items in its warehouses. Hence, under this DREF operation, LRC, with technical assistance from procurement and logistics team of IFRC, will procure 717 kitchen sets, 1,130 hygiene kits, and 1,153 relief kits (food baskets).

#### (iii) Implementation of needs assessment in all provinces affected by recent floods

The LRC team have joined the teams from public departments in conducting needs assessments in floods affected provinces. As of the submission of this DREF application, needs assessments are being implemented in 8 provinces (including the 3 provinces where LRC will have distribution activities). Based on the result of needs assessments (esp. for 5 provinces where LRC does not have distribution activities) and the coordination with public departments, the LRC will decide if there will be need for LRC to expand its response activities to all provinces affected by floods. If needed, LRC may request for second allocation of DREF support.

**Community Engagement and Accountability (CEA):** CEA is amongst the core components of IFRC's and LRC's humanitarian programming. Under this DREF operation, IFRC and LRC will ensure CEA in all aspects of field implementation applying the Movement-wide commitments and minimum actions for community engagement and accountability.

The CEA approach emphasizes a more regular or permanent presence in the communities, and strong community engagement from the outset. It promotes resilience among the affected communities by ensuring they are able to access humanitarian assistance as necessary, have the required information on the services available to them, and are involved in the planning and delivery of assistance, including beneficiary selection, distribution of cash assistance, and implementation of post-distribution monitoring activities.

The main operation activities will regularly be accompanied by community-based information and sensitization sessions in the community. The community engagement will be facilitated and supported by the pre-established community volunteers (male and female), which will play instrumental roles in facilitating the identification and participation of vulnerable individuals and groups, and implementation of the planned activities. To ensure meaningful integration of Protection, Gender, and Inclusion (PGI) and CEA in this operation, LRC, at community level, will also select train volunteers from displaced groups who will then be engaged and support implementation of the operation in their respective communities. Community elders/representatives will take an active role in beneficiary assessment and

selection along with certain members of the community that are part of community committees. For instance, once the implementation communities will be mapped out, the LRC team will meet with the respective community members and will provide them with beneficiary selection criteria, ensuring that the wider community understands the response, and the criteria is finalized in coordination with the community leaders. The process will be documented and shared with sector colleagues to impact their activities too. The process will provide with an opportunity to answer questions and share information with communities as well as listen and document their inputs.

The community leaders will provide the LRC staff with a list of all households meeting the criteria. LRC staff will then assess all proposed households using LRC's beneficiary assessment tool and by conducting household level interviews. The community members will also support the implementation of the activities in their respective communities and then in conducting monitoring visits. In group discussions/meetings with diverse groups of community members, normally held at the community level, the community members will also share their thoughts and feedback on the activities that will happen in their villages. LRC staff, normally Planning, Monitoring, Evaluation, and Reporting (PMER) team, will share the feedbacks with the Disaster Management team ensuring that immediate and appropriate actions are taken, and the issues (if any) are timely addressed.

## **Support Services**

### **Human resources**

LRC has limited trained staff to support the DREF operation, CCD Bangkok staff will continue supporting the coordination, finance, communication, and reporting. Additional surge support for the operation will also be required from IFRC CCD or IFRC Asia Pacific Regional Office (APRO) for seven – 10 days, specifically to support the needs assessment and data analysis. Following the outcome of the needs assessment it is expected that additional (remote) international surge (Rapid Response Personnel) capacity will be required if there is a scale up of activities. The DREF operation will cover the per diem, accommodation and transport allowances for staff that are assigned to support the activities planned. The trained volunteers, around 60 people in 3 provinces, also will be mobilized to support LRC.

### **Logistics and supply chain**

LRC will lead the procurement process as usual, and it will be supported and monitored by IFRC Programme Officer hired and contracted by LRC. In the meantime, LRC staff will be further coached in logistics and procurement during DREF operation. The local procurement will be done in line and follow the IFRC Procurement Procedures.

In case of needs, additional technical logistic and /procurement support can be extended by IFRC CCD in Bangkok and the Global Humanitarian Services & Supply Chain Management – Asia Pacific (GHS&SCM-AP) unit in Kuala Lumpur.

### **Communications**

Communications are a key component of this operation. The principal aim is to ensure that this humanitarian response is professionally communicated, understood, and supported by internal and external stakeholders. Maintaining a steady flow of timely and accurate public information focused on the humanitarian needs and the LRC response will be done to support humanitarian diplomacy and effective resource mobilization efforts. Communications measures will also aim at enhancing collaboration with key partners and stakeholders and mitigating reputational risks.

Materials will be developed and shared, including high-quality photos and key messages to guide partner communications and social media posts. Spokespeople will be identified, supported, and pitched to the media. Coverage will be monitored. Where possible, journalists and others will be supported to visit Red Crescent activities. Furthermore, all communications products will preserve the dignity of people and promote diversity, gender inclusion and respect.

IFRC will support the LRC communications team to communicate with external audiences with a focus on the floods and the Red Cross and Red Crescent humanitarian actions assisting the affected people. The communications will generate visibility and support for the humanitarian needs and the Red Cross Red Crescent response. Close collaboration will be maintained between the Asia Pacific IFRC regional communications unit, IFRC Country Cluster Delegation and the National Society to ensure a coherent and coordinated communications approach.

Communications content will be promoted on national, regional, and global IFRC channels and shared with National Societies in the IFRC network. Media and social media scanning will aim to increase effectiveness and contribute to assessing and managing risks.

### **Security**

The National Society's security framework will apply throughout the duration of the operation to their staff. All IFRC staff must, and Red Cross and Red Crescent staff and volunteers are encouraged, to complete the IFRC Stay Safe e-learning courses (e.g., Stay Safe Personal Security, Stay Safe Security Management and Stay Safe Volunteer Security online training). In case of a need for deployment for personnel under IFRC security's responsibility, including surge support

and integrated PNS deployed to the area, the existing IFRC country security plan, including security regulations, contingency plans for medical emergencies, relocation and critical incident management will be applicable. Any field missions undertaken by IFRC personnel will be undertaken following the current IFRC travel approval process, current health advisories and business continuity planning (BCP) guidance regarding COVID-19. Furthermore, National Society's Staff and volunteers to be aware of the security status and briefed on reactions in emergency by NS Security Focal Point.

#### **Planning, monitoring, evaluation, & reporting (PMER)**

LRC will be responsible for implementation and monitoring of all activities for the DREF operation with support from IFRC CCD Bangkok. In the first instance collation and reporting of the findings of needs assessments in the field will be the priority to finalize requirements for an additional DREF allocation, and activities to support the affected population. Progress report and final report will be issued accordingly.

For the Post Distribution Monitoring (PDM) data collection including SADDD (sex, age, disability disaggregated data), planned under this emergency operation, LRC will use the PDM tool created in collaboration with IFRC technical staff. The PDM data will be collected by LRC PMER staff and if required by external enumerators but will not be collected by LRC project staff involved in the distribution of the assistance to project beneficiaries. PDM visits will be conducted two weeks after the distribution. During the course of implementation, in addition to submitting the progress status reports, PDM reports will be developed and shared with relevant and concerned parties with successes and challenges shared based on the response experiences regularly. PDM activities will enable LRC to review key aspects of response quality and effectiveness, including the accessibility of the assistance to all target groups (irrespective of gender, age, disability), satisfaction with the distribution process, timeliness of assistance provided, to what extent assistance was adequate in meeting needs, perceptions on appropriateness and relevance of the assistance and record perceptions on treatment by transfer agents and staff.

A lesson learned workshop shall also be conducted at the end of the operation to allow LRC and IFRC country teams to deeply investigate the response operational and service delivery rational and what could be further enhanced into the quality of implementation.

#### **Administration and Finance**

Operational expenses such as per-diem, accommodation, transportation, communication, and coordination activities are regulated by IFRC procedures with the support of the IFRC CCD. Finance and administration support to the operation is to be provided by LRC Headquarters, with the assistance from the finance and administration team of the IFRC CCD and APRO, when required.

## C. Detailed Operational Plan



### Shelter

People targeted: 3,585

Male: 1,972

Female: 1,613

Requirements (CHF): 39,602

**Needs analysis:** The flood damaged the infrastructure including equipment and amenities which led to the disruption of the routine functioning of schools, health facilities, community shelters/ public buildings that could otherwise have served for shelter and respite for people in the affected areas. Several of the public buildings which were damaged during the disaster, have also lost connectivity and are inaccessible due to damages to roads and bridges.

**Risk analysis:** The most vulnerable will be prioritized, such as the elderly, people with disabilities and reduced mobility, single-headed households, lactating women, large households, and those with informal settlement arrangements given that displaced households are typically more vulnerable than non-displaced. Risk factors related to vector and water borne diseases such as dengue fever, malaria, and diarrhoea have also been elevated as people affected now have limited access to safe water for drinking and hygiene, and appropriate sanitation facilities.

**Population to be assisted:** 717 households (3,585 people) affected by floods will be provided with the essential household items (kitchen sets).

**Programme standards/benchmarks:** The shelter intervention endeavours to meet the minimum standards (and environmental impact) as set out in the Sphere standards for Shelter and Settlements. LRC will coordinate closely with the Government, shelter partners, other key stakeholders in the shelter sector, as well as other key sectors to ensure affected communities have continued access to essential services.

P&B Output Code	Shelter Outcome 1: Communities in disaster and crisis affected areas restore and strengthen their safety, well-being and longer-term recovery through shelter and settlement solutions	# of people targeted/reached with safe, appropriate and adequate shelter and settlements assistance (Target: 3,585)																
	Shelter Output 1.1: Short, medium and long-term shelter and settlement assistance is provided to affected households	# of households are provided with emergency shelter and settlement assistance (Target: 717)																
	Activities planned	Week	1	2	3	4	5	6	7	8	9	10	11	12	13	14	15	16
AP005	Identification, registering and verification of people to be assisted		x	x														
AP005	Procurement of household items (kitchen sets) for replenishment				x	x	x	x	x	x	x	x	x	x				
AP005	Mobilization of volunteers and provide orientation on distribution Protocols		x	x	x	x												
AP005	Transportation and distribution of household items (kitchen set) to target locations		x	x	x	x												



## Livelihoods and basic needs

People targeted: 5,765

Male: 3,171

Female: 2,594

Requirements (CHF): 61,651

**Needs analysis:** 183 villages in the 8 provinces, with an estimated 10,131 households (42,550 people) were affected by the floods. Based on initial data collected, the NDMO and Ministry of Labour and Social Welfare which LRC at branches level joint conducting assessment, has identified the most urgent needs to be food, water, household items, hygiene kit and medicines, as well as boats and equipment to support the ongoing search and rescue operation.

**Risk analysis:** 1,153 most vulnerable households will be prioritized, such as the elderly, people with disabilities and reduced mobility, single-headed households, lactating women, large households, and those with informal settlement arrangements given that displaced households are typically more vulnerable than non-displaced.

Risk factors related to vector and water borne diseases such as dengue fever, malaria, and diarrhoea have also been elevated as people affected now have limited access to safe water for drinking and hygiene, and appropriate sanitation facilities

**Population to be assisted:** 1,153 most vulnerable households that were affected by the floods. The specific area will be confirmed with the needs assessment

**Programme standards/benchmarks:** Reference Sphere, IFRC Guidelines for Livelihoods programming. including CEA process to promote transparency. Moreover, LRC will coordinate with the appropriate line Government Agencies in Laos. The LRC will also ensure close coordination with other INGO's and the Cash Working Group to maximize resources and to avoid duplication of support to target beneficiaries".

P&B Output Code	Livelihoods and basic needs Outcome 1: Communities, especially in disaster and crisis affected areas, restore and strengthen their livelihoods	# of households of targeted population whose livelihood are improved from pre-disaster level. (Target: 1,153)																
P&B Output Code	Livelihoods and basic needs Output 1.2: Basic needs assistance for livelihoods security including food is provided to the most affected communities	# of targeted households that have enough food to meet their (Target: 1,153)																
	Activities planned	Week	1	2	3	4	5	6	7	8	9	10	11	12	13	14	15	16
AP008	Identification, registering and verification of people to be assisted		x	x														
AP008	Distribution of food baskets (relief kits)		x	x	x	x												
AP008	Procurement of food baskets (relief kit) for replenishment				x	x	x	x	x	x	x	x	x	x				
AP008	Procurement of cloth bag for food baskets packing				x	x	x											
AP008	Implementation of post-distribution monitoring activities												x	x	x	x		



## Water, sanitation and hygiene

People targeted: 5,651

Male: 3,108

Female 2,543

Requirements (CHF): 54,635

**Needs analysis:** 183 villages in the 8 provinces, with an estimated 10,131 households (42,550 people) were affected by the floods. Based on initial data collected, the NDMO and Ministry of Labour and Social Welfare which LRC at branches level joint conducting assessment, has identified the most urgent needs to be food, water, household items, hygiene kit and medicines, as well as boats and equipment to support the ongoing search and rescue operation.

**Risk analysis:** Risk factors related to vector and water-borne diseases such as dengue fever, malaria, and diarrhoea have also been elevated as people affected now have limited access to safe water for drinking and hygiene, and appropriate sanitation facilities

**Population to be assisted:** 1,130 most vulnerable households that were affected by the floods. The specific area will be confirmed with the needs assessment

**Programme standards/benchmarks:** Sphere minimum standards, Global Water and Sanitation Initiative, Household Water Treatment and Safe Storage in Emergencies Manual

P&B Output Code	WASH Outcome 1: Immediate reduction in risk of waterborne and water related diseases in targeted communities	# of people reached with water, sanitation and hygiene services (Target: 5,651)																
	WASH Output 1.5: Hygiene-related goods (NFIs) which meet Sphere standards and training on how to use those goods is provided to the target population	# of assessments/monitoring visits undertaken and shared (Target: 2)																
	Activities planned	Week	1	2	3	4	5	6	7	8	9	10	11	12	13	14	15	16
AP030	Identification, registering and verification of people to be assisted		x	x														
AP030	Distribute hygiene kits		x	x	x	x												
AP030	Procurement of hygiene kit for replenishment purposes				x	x	x	x	x	x	x	x	x	x				
AP030	Train population of targeted communities in the use of distributed hygiene kits		x	x														



## Protection, Gender and Inclusion

People targeted: 15,000

Male: 8,250

Female: 6,750

Requirements (CHF): 3,834

**Needs analysis:** Emergencies exacerbate existing gender inequalities, and the incidence of sexual and gender-based violence (SGBV) often increases during and after emergencies. Multiple forms of gender-based violence, particularly, domestic, psychological, and sexual abuse are reported, affecting individuals in hosting and displaced communities alike. Holistic approaches aimed at prevention and response and stronger coordination among government actors are needed to reduce vulnerabilities and to mitigate short and longer-term protection risks. Timely identification of protection risks and violations through systematic and coordinated protection monitoring and analysis will inform preventative, responsive, and remedial interventions, as well as enhance accountability. This includes evidence-based advocacy, protection specific service delivery, and community-based mobilization, mitigation, and prevention activities creating a protection-conducive environment.

**Risk analysis:** include Children, elderly, persons with disabilities, women, and internally displaced persons (IDPs) face increased risk of exploitation and abuse in the current context. Interventions which take into account the different needs of people based on gender, age, disability, etc are needed to adequately ensure dignity, access, participation, and safety for all people.

**Population to be assisted:** LRC aims to reach 3,000 households (15,000 individuals) who are severely impacted by floods, in the three target provinces. LRC will target the most vulnerable people, including female-headed households and children from socially and economically disadvantaged households (PWDs, IDPs). LRC will seek support from IFRC along with its members in technical and coordination support to promote the integration of community engagement, based on IFRC standards, and develop the two-way communication/feedback response mechanism loop between people and program responsible in all phases of programming.

**Program standards/benchmarks:** Minimum Standard commitments for Gender and Diversity, IASC standards.

P&B Output Code	Protection, Gender & Inclusion Outcome 1: Communities become more peaceful, safe and inclusive through meeting the needs and rights of the most vulnerable.	The operation demonstrates evidence of addressing the specific needs to ensure equitable access to disaster response services. (Target: Yes)																
	Protection, Gender & Inclusion Output 1.1: Programmes and operations ensure safe and equitable provision of basic services, considering different needs based on gender and other diversity factors.	# of NS that ensure improved equitable access to basic services, considering different needs based on gender and other diversity factors. (Target: Yes)																
	Activities planned	Week	1	2	3	4	5	6	7	8	9	10	11	12	13	14	15	16
AP031	Support sectoral teams to include measures to address vulnerabilities specific to gender and diversity factors (including people with disabilities) in their planning and implementation		x	x	x	x	x	x	x	x	x	x	x	x				
AP031	Sensitization of all staff and volunteers in sector-specific minimum standards for PGI in Emergencies			x				x	x									
AP031	Ensure collection of sex, age and disability disaggregated data		x	x	x	x	x	x	x	x	x	x	x	x				

AP031	Sensitization of response teams on code of conduct, child protection policy and PSEA policy		x				x	x	x									
AP031	Conduct Child Safeguarding Analysis and related action plan		x															

## Strategies for Implementation

Requirements (CHF): 37,413

P&B Output Code	<b>S1.1: National Society capacity building and organizational development objectives are facilitated to ensure that National Societies have the necessary legal, ethical and financial foundations, systems and structures, competences and capacities to plan and perform.</b>	# of NS branches that are well functioning in the operation (Target: 6)																
	<b>Output S1.1.1: National Societies have effective and motivated volunteers who are protected</b>	# of volunteers involved in the operation provided with briefing/orientation (Target: 120)																
	Activities planned	Week	1	2	3	4	5	6	7	8	9	10	11	12	13	14	15	16
AP048	Provide complete briefings and orientation to volunteers in disaster response, data collection and information management.		x	x	x	x	x	x	x	x	x	x	x	x	x	x	x	x
AP048	Volunteers working with NS have insurance coverage for accidents and death.		x	x	x	x	x	x	x	x	x	x	x					
P&B Output Code	<b>Outcome S2.1: Effective and coordinated international disaster response is ensured</b>	Does the operation demonstrate evidence of effective and coordinated international disaster response? (Target: Yes)																
	<b>Output S2.1.1: Effective and respected surge capacity mechanism is maintained</b>	# of relevant surge profile deployed to support the operation (target:3)																
	Activities planned	Week	1	2	3	4	5	6	7	8	9	10	11	12	13	14	15	16
AP046	IFRC surge technical support to LRC					x	x	x	x	x	x	x	x					
P&B Output Code	<b>Output S2.1.2: Supply chain and fleet services meet recognized quality and accountability standards</b>	Procurement is carried as per IFRC standards. (Target: 100% compliance)																
	Activities planned	Week	1	2	3	4	5	6	7	8	9	10	11	12	13	14	15	16
AP050	IFRC CCD provides support as needed to the National Society's logistics unit for procurement.		x	x	x	x	x	x	x	x								
P&B Output Code	<b>Output S2.1.3: Coordinating role of the IFRC within the international humanitarian system is enhanced</b>	LRC engage with other humanitarian actors for coordinated humanitarian intervention. (Target: Yes - Inter Agency group)																
	Activities planned	Week	1	2	3	4	5	6	7	8	9	10	11	12	13	14	15	16
AP049	IFRC CCD supports LRC in coordinating with other humanitarian actors and relevant clusters on a regular basis		x	x	x	x	x	x	x	x	x	x	x					
P&B Output Code	<b>Outcome S3.1: The IFRC secretariat, together with National Societies uses their unique position to influence decisions at local, national and international levels that affect the most vulnerable</b>	IFRC and NS are visible, trusted and effective advocates on humanitarian issues. (Target: Yes)																
	<b>Output S3.1.2: IFRC produces high-quality research and evaluation that informs advocacy, resource mobilization and programming</b>	# of assessment done for needs, capacities and gaps (Target: 1)																

	Activities planned	Week	1	2	3	4	5	6	7	8	9	10	11	12	13	14	15	16
AP048	Assessment of needs, capacities and gaps as part of a multi-sectoral assessment					x	x	x	x	x	x	x	x	x				
<b>P&amp;B Output Code</b>	<b>Output S3.2.1: Resource generation and related accountability models are developed and improved</b>		# of lessons learned workshop conducted (Target: 1)															
	Activities planned	Week	1	2	3	4	5	6	7	8	9	10	11	12	13	14	15	16
AP055	Post distribution monitoring activities										x	x	x	x				
AP055	Lessons learned workshop for DREF operation and Practical training on DREF application																x	
AP055	IFRC support LRC in monitoring (PDM) and reporting				x	x	x	x	x	x	x	x	x	x	x	x	x	x

## D. Funding Requirements

International Federation of Red Cross and Red Crescent Societies

all amounts in Swiss Francs (CHF)

### DREF OPERATION

MDRLA008 - LAO - FLOODS

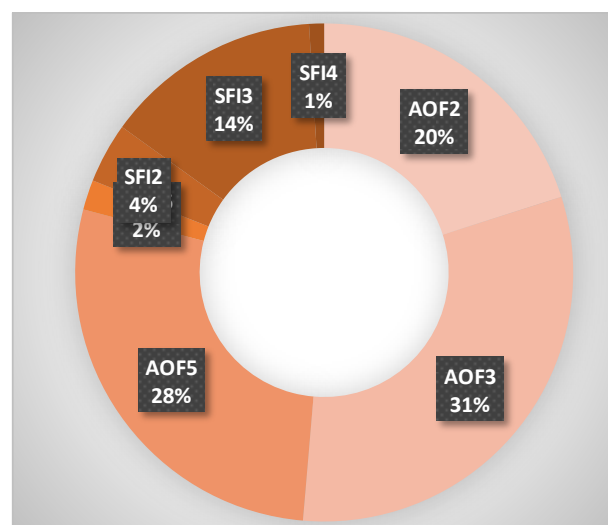
23/08/2022

#### Budget by Resource

Budget Group	Budget
Water, Sanitation & Hygiene	40,680
Utensils & Tools	32,265
Other Supplies & Services	53,269
<b>Relief items, Construction, Supplies</b>	<b>126,214</b>
Distribution & Monitoring	23,400
<b>Logistics, Transport &amp; Storage</b>	<b>23,400</b>
Workshops & Training	15,600
<b>Workshops &amp; Training</b>	<b>15,600</b>
Travel	17,160
Office Costs	1,800
<b>General Expenditure</b>	<b>18,960</b>
DIRECT COSTS	185,104
INDIRECT COSTS	12,032
<b>TOTAL BUDGET</b>	<b>197,135</b>

#### Budget by Area of Intervention

AOF1	Disaster Risk Reduction	
AOF2	Shelter	39,602
AOF3	Livelihoods and Basic Needs	61,651
AOF4	Health	
AOF5	Water, Sanitation and Hygiene	54,635
AOF6	Protection, Gender and Inclusion	3,834
AOF7	Migration	
SF11	Strengthen National Societies	
SF12	Effective International Disaster Management	7,700
SF13	Influence others as leading strategic partners	27,797
SF14	Ensure a strong IFRC	1,917
<b>TOTAL</b>		<b>197,135</b>



## Reference documents

Click here for:

- Previous Appeals and updates
- Emergency Plan of Action (EPoA)

**For further information, specifically related to this operation please contact:**

**In the Lao Red Cross Society**

- Dr. Phouthone MUONGPAK, President; email: [phouthone@yahoo.com](mailto:phouthone@yahoo.com)
- Dr. Silivay XAIYALARD, Deputy of Disaster Management Department; email: [lrc.sivilay@gmail.com](mailto:lrc.sivilay@gmail.com)

**In the IFRC Country Cluster Delegation, Bangkok:**

- Kathryn Clarkson, Head of CCD Bangkok, email: [kathryn.clarkson@ifrc.org](mailto:kathryn.clarkson@ifrc.org)
- Rommanee Klaeotanong, Community Resilience Officer, email: [rommanee.klaeotanong@ifrc.org](mailto:rommanee.klaeotanong@ifrc.org)

**In the IFRC Asia Pacific Regional Office, Kuala Lumpur**

- Alexander Matheou, Regional Director; email [alexander.matheou@ifrc.org](mailto:alexander.matheou@ifrc.org)
- Juja Kim, Deputy Regional Director, email [juja.kim@ifrc.org](mailto:juja.kim@ifrc.org)
- Joy Singhal, Head of HDCC unit; email [joy.singhal@ifrc.org](mailto:joy.singhal@ifrc.org)
- Ahmad Ali Rezaie, Operations Coordinator; email: [OpsCoord.SoutheastAsia@ifrc.org](mailto:OpsCoord.SoutheastAsia@ifrc.org)

**In IFRC Geneva**

- Christina Duschl, senior officer, Operations Coordination; email: [christina.duschl@ifrc.org](mailto:christina.duschl@ifrc.org)
- Eszter Matyeka, Senior Officer, DREF; email: [eszter.matyeka@ifrc.org](mailto:eszter.matyeka@ifrc.org)

**For IFRC Resource Mobilization and Pledges support**

- **In IFRC Asia Pacific Regional Office:** Juliene de Bernard, Strategic Engagement and Partnership in Emergencies - Surge; email: [partnershipsEA.AP@ifrc.org](mailto:partnershipsEA.AP@ifrc.org)

**For Performance and Accountability support (planning, monitoring, evaluation and reporting enquiries)**

- **In IFRC Asia Pacific Regional Office:** Alice Ho, Head of PMER and Quality Assurance; email: [alice.ho@ifrc.org](mailto:alice.ho@ifrc.org)

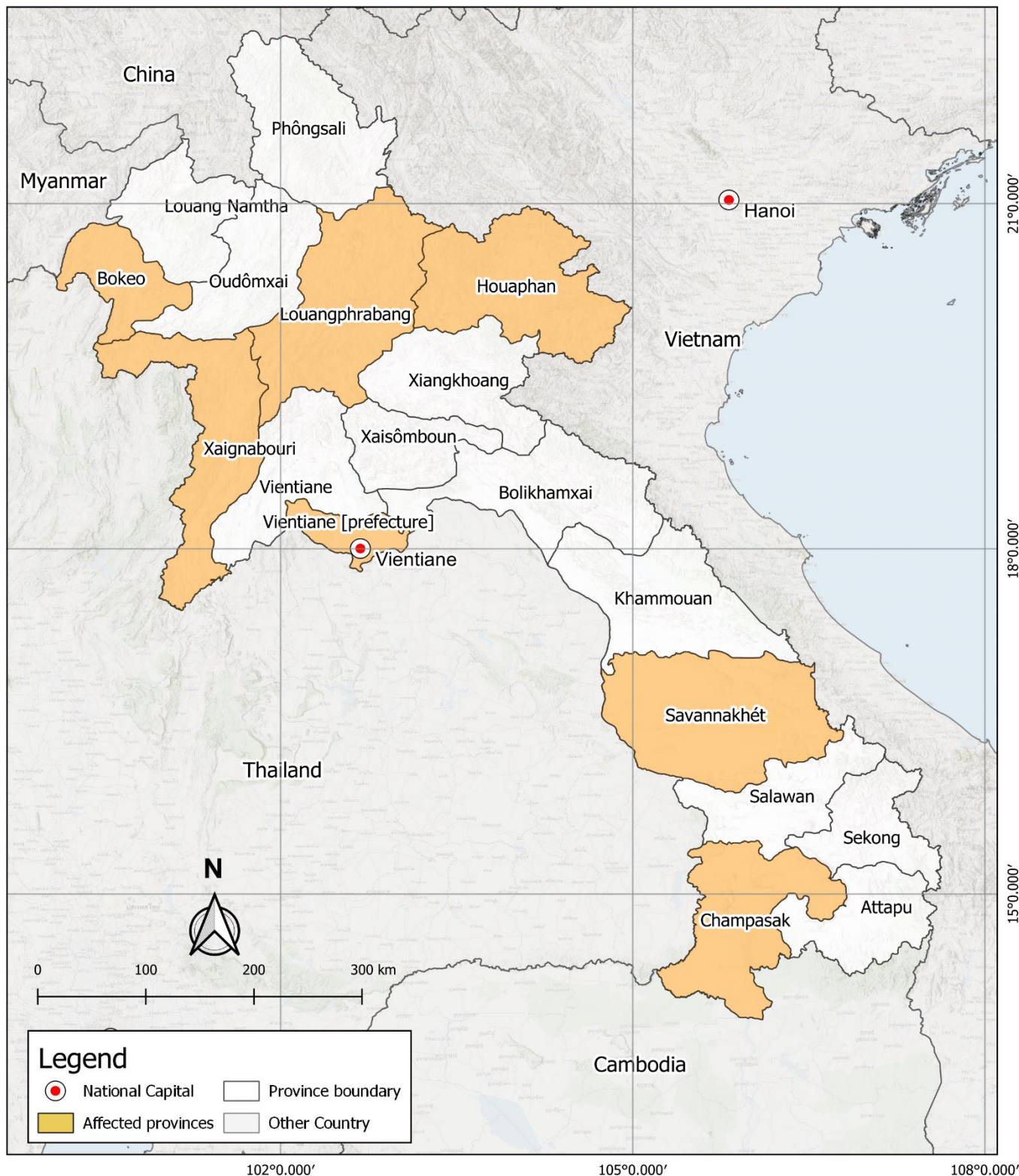
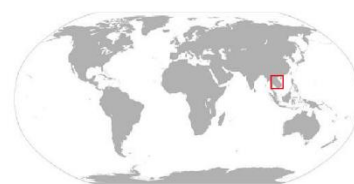
## How we work

All IFRC assistance seeks to adhere to the **Code of Conduct** for the International Red Cross and Red Crescent Movement and Non-Governmental Organizations (NGO's) in Disaster Relief and the **Humanitarian Charter and Minimum Standards in Humanitarian Response (Sphere)** in delivering assistance to the most vulnerable. The IFRC's vision is to inspire, encourage, facilitate and promote at all times all forms of humanitarian activities by National Societies, with a view to preventing and alleviating human suffering, and thereby contributing to the maintenance and promotion of human dignity and peace in the world.



# Lao People's Democratic Republic: Floods Emergency Plan of Action (EPoA)

20 August 2022



The maps used do not imply the expression of any opinion on the part of the International Federation of the Red Cross and Red Crescent Societies or National Societies concerning the legal status of territory or its authorities. Map data sources: OCHA, OSM Contributors, ICRC, IFRC