


Emergency Plan of Action (EPoA)

Algeria: Forest Wildfires



DREF Operation n°	MDRDZ008	Glide n°:	FR-2022-000297-DZA
Date of issue:	05 September 2022	Expected timeframe:	4 months
		Expected end date:	31 January 2023
Category allocated to the of the disaster or crisis: Yellow			
DREF allocated: CHF 369,864			
Total number of people affected:	6,518¹	Number of people to be assisted:	6,000 people
Provinces affected:	14 governorates (Wilayas): Bejaia, Jijel, Souk Ahras, El Taref, Setif, Skikda, tipaza, tizi-ouzou, Guelma, Batna, Mila, Annaba, Constantine and Bordj Bou Arreridj	Provinces/Regions targeted:	The 8 most affected governorates (wilayas) (Bejaia, Jijel, Souk Ahras, El Taref, Setif, Skikda, Tizi Ouzou and Guelma)
Operating National Society: Algerian Red Crescent (ARC) has 48 local units (National Society sub-divisions that work directly with the community – this includes local chapters, branches, regional and intermediate offices, and headquarters) which covers all the country's 48 wilayas (districts) and have access to 24,000 volunteers. The ARC has mobilized 500 volunteers and 14 staff members for immediate intervention and initial assessments.			
Red Cross Red Crescent Movement partners actively involved in the operation: The International Federation of Red Cross and Red Crescent Societies (IFRC).			
Other partner organizations actively involved in the operation: National Algerian Army and National Civil Protection authorities.			

A. Situation analysis

Description of the disaster

More than 100 fires raged in north-eastern Algeria on the night of Sunday, August 14, 2022, affecting 14 governorates (Wilayas): Bejaia, Jijel, Souk Ahras, El Taref, Setif, Skikda, tipaza, tizi-ouzou, Guelma, Batna, Mila, Annaba, Constantine and Bordj Bou Arrerid.

The fires did not affect inhabited areas in some wilayas, while in others, the number of people affected was minimal. The list of Wilayas with the highest number of affected people is shown in the table below.

¹ Reflection of the final number of people affected is not available yet.

No	Governorate	Number of affected people per governorate
1	Bejaia	427
2	Jijel	809
3	Souk Ahras	1,331
4	El Taref	1,907
5	Setif	619
6	Skikda	302
7	Tizi Ouzou	208
8	Guelma	397

These fires resulted in the death of 44 people and caused more than 250 injuries in addition to the evacuation of the "Mother and Child" medical complex located in Souk Ahras and the displacement of more than 500 families (2,000 people).

The fires also affected the livelihoods of over 6,000 people, including farmers who have lost dozens of hectares, nearly a thousand fruit trees, and more than 400 heads of livestock (cows, sheep, etc.).

According to the figures transmitted to the ARC by the wilayas, more than 6,000 hectares were destroyed by the fires. The wilaya of Souk Ahras has lost one-third of its forests.

The Algerian government has mobilized more than 1,200 firefighters (National Civil Protection) and seven fire helicopters (National Algerian Army) in response to this disaster.

The 2021 fires broke out in the wilayas of Tizi Ouzou, Béjaïa, Bouira, Sétif, Jijel, Boumerdès, Bordj Bou Arréridj, Blida, Médéa, Khenchela, Guelma, Tébessa, Tiaret and Skikda. This year's fires have resumed in some wilayas mentioned above such as Bejaia, Jijel, Setif, Skikda, Tizi-Ouzou, Guelma and Bordj Bou Arréridj. the extent of the fires differs from one wilaya to another, for example, the fires that took place in Tiziouzhou this year are less impactful than those of 2021. On the other hand those of Setif this year had more impact than those of the last. In terms of lost forest area, the losses this year are greater than those of last year.

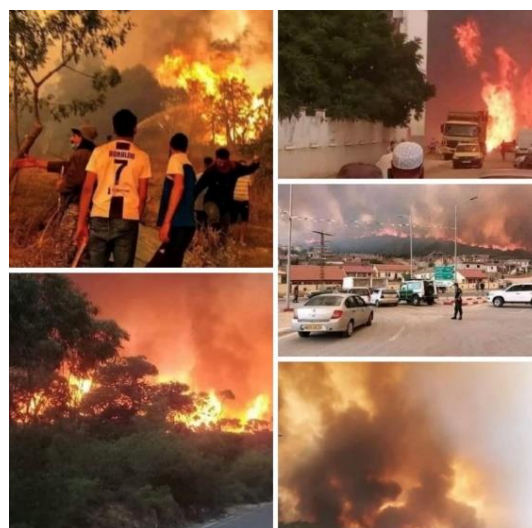


Figure 1: Forest wildfires in northeast of Algeria.
Credit: ARC

Summary of the current response

Overview of Operating National Society Response Action

Since the onset of the disaster, the Algerian Red Crescent (ARC) activated its response protocol including establishing a crisis cell. To support the affected families, ARC mobilized three psychosocial teams, 12 medical personnel, and 500 volunteers to date. In addition, seven ambulances, three 4x4 cars, and two electric generators



Figure 2: ARC response to the wildfires. Credit: ARC

were deployed. ARC, in coordination with the Civil Protection Authority, set up 50 tents from their stock to house 500 people (125 families) while 1,500 people (375 families) remain in need of Shelter support.

ARC also, distributed 500 food parcels to 500 families to cover their needs for one month, 300 kitchen sets, and 700 pieces of COVID-19 personal protection equipment (PPE).

ARC continues to work with authorities to coordinate their response to the wildfires and to provide assistance as needed.

Some private sector actors supported the crisis response by availing additional ambulance cars to be managed by ARC in the affected areas. The field assessment is still ongoing, and a preliminary report has been published on [IFRC GO Platform](#).

ARC has plans to scale up support beyond the scope of this DREF, as they have supported the preparation of emergency shelters for 500 families (2,000 people) via shelter centres.

Overview of Red Cross Red Crescent Movement Actions in-country

The IFRC MENA Regional Office in Lebanon are supporting ARC and will continue to monitor the situation. The IFRC MENA Regional Office will provide technical support to the National Society to facilitate the implementation of the planned relief operation.

IFRC works in coordination with the ICRC, which has been present in Algeria since the country's independence in 1954. ICRC's main mandate in Algeria is to support monitoring prisons conditions and supports ARC on several files, such as first aid, the dissemination of International Humanitarian Law/Humanitarian Principles, and Restoring Family Links (RFL).

Overview of other actors' actions in-country

The Algerian Government deployed more than 7 firefighter helicopters and dispatched fire engines and more than 1,200 firefighters to put out the fires and protect people and property. Some private sector actors have contributed by making ambulances available to the ARC during this period of crisis.

Needs analysis, targeting, scenario planning, and risk assessment

Needs analysis

The Algerian Red Crescent, in coordination with local authorities, carried out an initial assessment of needs and identification of the estimated number of the affected population. The fires burned much of the territory and many people lost their homes. The hot and dry conditions could cause new outbreaks of fire. A new crisis is possible.

Communities living near the fires have been forced to flee their homes and take refuge either in the identified government emergency shelter or in different areas. It is expected that 500 families (2,000 people) will be severely

affected by the disaster. A total number of 50 tents were distributed to cover the needs of 125 families (500 people), while 375 families (1,500 people) remain in need of shelter assistance. These 500 families are also in need of clothing kits and kitchen sets. ARC has distributed 300 kitchen sets for the families and 200 kits are still needed to cover the 500 families.

Needs for household items and shelter are expected to increase as the count is finalized in different areas. Livestock in these communities have also been affected by the disaster, farms are burned, animals have died, and many have lost their sources of food and income. ARC has distributed 500 one-month food parcels and will continue to distribute the remaining 200 parcels in stock. However, the distribution covered only the 500 most affected families who have lost their shelter and under this DREF operation, ARC plans to cover the needs of the 1,000 families whose livelihoods were affected but maintained their shelters. As a second stage distribution, ARC plans to cover the needs of the total target population (1,500 families, 6,000 people) with another food parcel distribution to cover their basic needs for another month.

Heat waves and wildfire smoke also threaten vulnerable groups - such as the elderly, children, pregnant women, and people with respiratory conditions - due to the increased possibility of heat stroke or heat exhaustion during prolonged exposure to high temperatures. These health risks could also extend to relatively healthy people during significant heat events.

Targeting

Following the initial needs assessment, ARC prioritized two categories of the affected population. The first category is people who have lost their homes to the fires which are estimated around 500 families (2,000 people), this category is considered the highest priority. The second category is people who were affected by the fires on a smaller scale, which is estimated at around 1,000 families (4,000 people), this category who have not lost their shelter, however, they have lost their means of subsistence. For example, farmers who have lost their crops and livestock or workers who have lost their jobs and therefore their source of income allowing them to meet their basic needs.

ARC provided immediate emergency assistance to 2,000 people (500 households), including shelter, household items, and food parcels, in addition to first aid and the evacuation of more than 200 wounded. The governorates of Béjaïa, Jijel, Souk Ahras, El Taref, Sétif, Skikda, Tizi Ouzou, and Guelma are the governorates most affected by the forest fires, and many affected people will be targeted by this reconstitution operation. During this operation, the Algerian Red Crescent will provide those affected with the necessary additional psychosocial support, and PPE for volunteers will be distributed to protect them from the spread of the COVID-19 pandemic and other transmissible diseases.

The operation will also target an estimated number of 100,000 people from the communities affected by/prone to these fires with leaflets containing awareness-raising messages on how to deal with similar events.

ARC will continue to collect additional data in conjunction with local authorities to determine the exact number of people affected by the disaster. Final disaggregated data from the targeted population will be shared in the final report of this operation.

Scenario planning

Scenario	Humanitarian consequence	Potential Response
The best-case scenario will be if the fires are contained, and further spread is impacting other areas	The affected area will be accessible to authorities and humanitarian workers to give a clear idea of the impact of the disaster and families will be able to access their homes if it is not damaged.	The Algerian Red Crescent will continue to support and will be able to capture the actual needs and the impact of this disaster, assistance will be mobilized to be delivered to the affected communities. The operation will be implemented as planned.

Worst case scenario, the fires will start again and spread to other areas.	The needs will be increased because of the spread to other areas; the affected communities might not be accessible due to the damage to the infrastructure and the blockage of roads, and assistance and support will not be sufficient to address all the needs.	The ARC will be supporting as much as possible where more support will be required from the partners, all the resources will be mobilized to support the affected governorates. The ARC will consider requesting scaling up the current operation to meet the needs of the affected population.
--	---	--

Operation Risk Assessment

The operation faces a variety of risks considering the current situation, including the occurrence of new fires in other areas, which may make access to the affected areas and support for affected families more difficult. This may also impact the distribution of assistance to the targeted families. ARC will closely monitor the situation and coordinate with the National Army and the civil protection authorities throughout the operation to ensure that volunteers are kept up to date on the evolving situation during the response in the affected areas.

Since August 14, 2022, the number of COVID-19 cases has stabilized at around 100 new cases per day, according to daily bulletins provided by the Ministry of Health. The Government continues to take measures to fight against the pandemic and limit its spread because the slightest relaxation can lead to an exponential increase in the number of cases. ARC is providing COVID-19-related support in Algeria by intervening in the Risk Communication and Community Engagement (RCCE) response, the distribution of personal and family hygiene kits, disinfection campaigns, and the vaccination roll-out with the help of the IFRC COVID-19 appeal. ARC is also an active member of the national response plan.

ARC will ensure that the volunteers are well protected during their response and support affected communities as part of this operation. Measures will also be considered during the distribution and assessment of the affected population. The National Society will continue to closely monitor the situation and revise the plan as necessary, taking into consideration the evolving COVID-19 situation and operational risks that might develop, such as operational challenges related to access to the affected population, availability of relief items, procurement issues, and movement of National Society volunteers and staff.

Lessons learned

Tents, food parcels, and PPEs are allocated under the current wildfire EA, based on previous experience with the response to forest fires through the EA in Algeria, where one of the major activities was the procurement of food. The food parcels will be procured through the ARC framework agreement (FA) since the FA covers food, hygiene kits, and other materials.

B. Operational strategy

Overall Operational objective:

The overall objective of this operation is to replenish the stocks depleted in the response in addition to procuring additional stocks to enable ARC to continue its response in providing life-saving assistance to 1,500 affected families (6,000 people) in the affected governorates Béjaïa, Jijel, Souk Ahras, El Taref, Sétif, Skikda, Tizi Ouzou and Guelma, through the distribution of emergency shelter items, food parcels, and psychosocial support.

Proposed strategy

The ARC, through the support of this operation, will replenish the stock of tents and food parcels that have already been distributed to the affected families. In addition, ARC will conduct a needs assessment in the targeted governorates to identify the exact needs of affected families on the ground. The needs assessment will inform of any possible revisions to the plan that may be required during the duration of this operation.

Shelter: Shelter Assistance will be provided to the 500 most affected families (2,000 people) who lost their homes. This DREF operation will cover the following:

- Procurement of 100 tents (including replenishing 50 tents already distributed),
- Procurement of 2,000 mattresses,
- Procurement of 2,000 blankets,
- Procurement of 500 kitchen sets,
- Procurement of 2,000 clothing kits² to displaced families (500 families, 2,000 people).

Livelihoods and basic needs: one-month food parcels will be provided to the affected families 1,500 families (6,000 people). This operation will cover the following:

- Replenishment of 500 parcels already distributed to the most affected families who have lost their homes.
- Procurement of 2,500 parcels to cover the second round of distribution to the most affected families in addition to 2,000 parcels to cover the needs of the remaining 1,000 affected families.

The ARC plans to provide two food parcels³ per family (4 family members) covering their needs for two months. Beyond this period, families will be self-sufficient due to the aid provided by the state to replace sources of subsistence.

Health: ARC will continue to provide the necessary Psychosocial Support (PSS) to the 1,500 affected families.

The operation will provide PPEs to the 500 families who have lost their homes. It will also target the communities affected by/prone to be affected by these fires with leaflets containing awareness-raising messages on how to deal with similar events.

Human Resources

ARC has mobilized 14 staff members, 500 volunteers, three psychosocial teams, and 12 medical personnel in the targeted regions for this DREF Operation. These personnel and volunteers are already trained and experienced in carrying out relief activities. The volunteers will be insured through the IFRC accident scheme and protected with visibility materials and required PPEs. The Operations Manager through the Rapid Response will be included in this operation to support the implementation of the activities.

Logistics and procurement

Logistics activities aim to effectively manage the supply chain, including procurement, storage, and forwarding to distribution sites, in accordance with the operation's requirements and aligned with IFRC's logistics standards, processes, and procedures. Sourcing of relief/Food/PPE items is to be done primarily from the local market, with adequate approvals to be sought/received from IFRC through the support of IFRC MENA, Supply Chain Management Unit (IFRC GHS&SCM MENA) in Beirut. Any additional logistics support can be made available by the IFRC GHS&SCM MENA, as per need.

IFRC regional Global Humanitarian Service and Supply Chain Management (GHS&SCM) unit will support ARC in this DREF operation to strengthen the capacity of the National Society in fleet management, procurement, warehousing, and import/export processes. Local procurement will be carried out via the ARC logistics unit, with support from the IFRC regional office in Beirut to ensure compliance with the IFRC-agreed procurement

² The clothing kit includes 2 skin sweaters, 2 socks, 2 underwear, 1 pant, 1 shirt, 1 pyjama, 1 pair of shoes.

³ Each food parcel is composed of: 2kg of pasta, 4kg of rice, 2kg of lentils, 4kg of couscous, 2kg of chickpeas, 2kg of white beans, 1 kg of Orzo, 10kg of semolina, 10kg of flour, 250gr of salt, 2 kg of sugar, 500gr of coffee, 500gr of milk powder, 2 large cans of concentrated tomatoes, 05 litres of oil, 120 litres of mineral water, baby milk for families with babies.

procedures (and costings). The ARC has a Framework Agreement with suppliers related to the procurement of items such as Food and Hygiene kits, other materials are available locally in the country which will be easier to deliver within the operation timeframe.

Communications

ARC with the support of the IFRC MENA Regional Office will ensure the availability of the information related to this operation to the public. also, the ARC is considering issuing recommendations on preventative firefighting measures

Security

ARC will ensure the visibility of volunteers and staff by availing ARC-branded vests. In addition, ARC will coordinate with the national authorities at central and wilaya levels to make sure their volunteers have movement clearance. The volunteers will be insured through the IFRC accident scheme and protected with visibility materials and required PPEs.

Planning, monitoring, evaluation, & reporting (PMER)

The ARC will oversee all operational, implementation, monitoring and evaluation, and reporting aspects of the present operation in the affected areas through its country-wide network of branches and volunteers along with Central Committee PMER unit. IFRC, through its MENA Regional Office, will provide technical support to ensure the operational objectives are met. The data is collected by our operational teams who are in the field. these data relate to the state of the aid distributed, the grievances of the victims as well as the progress of the operations. we will share with the IFRC the state of progress of the population support operations. A kickoff workshop will be organized to ensure that the NS is well aware of the DREF monitoring and reporting guidelines. Reporting on the operation will be carried out in accordance with the IFRC DREF minimum reporting standards. A final report will be issued within three months from the end of the operation. Regular updates will be conducted between the IFRC Regional office and the ARC. An end-of-operation lessons learned workshop will be organized by IFRC and ARC to reflect on the DREF implementation and to take stock of that for future responses and to inform response preparedness planning efforts.

Information Management (IM)

The IFRC MENA regional IM will be supporting the ARCS in reporting through the IFRC GO platform to share updated field reports. Also, the regional IM team will work closely with ARCS to develop information products, visualizations, and maps for their response and activities.

Community engagement and accountability (CEA)

ARCS is committed to integrating CEA in its response operation. Community accountability and feedback/response mechanisms will be integrated into the operation to ensure that people to be assisted have access to timely and accurate information on the nature and scope of services provided by ARC.

Protection Gender and Inclusion (PGI)

Acknowledging that women, girls, men, and boys with diverse ages, disabilities, and backgrounds have very different needs, risks, and coping strategies, the operation will pay particular attention to the protection and inclusion of vulnerable groups. The ARC staff and volunteers will monitor protection issues and will ensure referral pathways to existing national protection-mandated agencies for the identified cases.

C. Detailed Operational Plan



Shelter

People targeted: 2,000 people (500 households)
Requirements (CHF):151,230

Needs analysis: Emergency shelters, such as 100 tents, and household items (2,000 blankets & 2,000 mattresses, and 500 kitchen sets) are among the initial needs identified following the disaster's impact, in addition to clothing kits for displaced families (500 families). As a result of the disaster, people fled their affected homes; authorities designated the location for emergency shelter for the affected families, and ARC assisted in preparing these shelters to receive the affected families.

Risk analysis: The risk is associated with the distribution and the safety of volunteers, particularly during the COVID-19 pandemic. However, The Algerian Red Crescent is coordinating with local authorities to secure the distribution process and will provide the necessary PPEs to the volunteers involved in this operation.

Population to be assisted: ARC will provide shelter assistance to the 500 most affected families who have lost their homes (2,000 people).

P&B Output Code	Shelter Outcome 1: Communities in disaster and crisis affected areas restore and strengthen their safety, well-being and longer-term recovery through shelter and settlement solutions	# of people targeted/reached with safe and adequate shelter and settlement. Target: 2,000															
	Shelter Output 1.1: Shelter and settlements and basic household items assistance is provided to the affected families.	# households provided with emergency shelter and settlement assistance. Target: 500															
	Activities planned Week	1	2	3	4	5	6	7	8	9	10	11	12	13	14	15	16
AP005	Conduct needs assessment of the targeted communities.																
AP005	Coordination with government and other stakeholders																
AP005	Analysis of the local market to identify availability/access to shelter and household items																
AP005	Deployment of household items including mattresses, blankets, clothing kits, and kitchen sets, and replenishment of tents provided																
AP005	Evaluation of the shelter support provided																



Livelihoods and basic needs

People targeted: 6,000 people (1,500 households)

Requirements (CHF): 111,825

Needs analysis: The disaster caused significant losses to those affected, including homes and livelihoods, as many people took refuge in the places identified by the authorities. The urgent needs of displaced families and those who have lost all means of subsistence include the food that has already been provided to families affected by the ARC from their emergency stockpile.

Risk analysis: The major risk is that the fires will start again and spread in many places, preventing the ARC from delivering food to those affected, but the ARC will continue to coordinate with the Civil Protection Authority and monitor the situation closely. Another risk is the scarcity of supplies, however, with the help of the IFRC, ARC will carry out a market analysis of the stock available, and international sourcing may be one of the solutions.

Population to be assisted: ARCS supported the most affected 500 families with one-month food parcels and will continue under this DREF operation to provide 2,500 food parcels (a total of 3,000 food parcels) to cover the needs of the 1,500 affected families for two months.

P&B Output Code	Livelihoods and basic needs Outcome 1: Communities, especially in disaster and crisis affected areas, restore and strengthen their livelihoods	# of targeted households that have enough food to meet their survival threshold. Target: 1,500															
P&B Output Code	Livelihoods and basic needs Output 1.2: Basic needs assistance for livelihoods security including food is provided to the most affected communities	# of people targeted/reached with food assistance. Target: 6,000															
	Activities planned Week	1	2	3	4	5	6	7	8	9	10	11	12	13	14	15	16
AP008	Replenishment of 500 food parcels, and distribution of 2500 food parcels																
AP008	Monitoring the distribution																
AP008	Evaluation of the livelihoods support provided																



Health

People targeted: 6,000 people (1,500 households)

Requirements (CHF): 12,354

Needs analysis: ARCS will continue to provide the necessary Psychosocial Support (PSS) to the 1,500 affected families. In addition to the provision of PPEs to the 500 families who have lost their homes. It will also target the communities affected by/prone to be affected by these fires with leaflets containing awareness-raising messages on how to deal with similar events. In order to prevent the spread of COVID-19 in the camps, it will be necessary to provide families with personal protective equipment (PPE) (mask, hydroalcoholic gel).

Risk analysis: Access to the targeted locations and the spread of fires are the major risks for which ARC is coordinating with authorities and monitoring the situation.

Population to be assisted: ARC will provide PSS services to 1,500 affected families and PPEs to 500 most affected displaced families.

P&B Output Code	Health Outcome 6: The psychosocial impacts of the emergency are lessened	# of people provided with psychosocial support (disaggregated by gender and age). Target: 6,000															
	Health Output 6.1: Psychosocial support provided to the target population as well as to RCRC volunteers and staff	# of PSS workshop conducted. Target: TBD															
	Activities planned Week	1	2	3	4	5	6	7	8	9	10	11	12	13	14	15	16
AP023	Assessment of PSS needs and resources available in the community																
AP023	Provide PSS to people affected by the crisis/disaster																
AP023	Provide PPE																
AP023	Producing RCCE materials on fire prevention																

Strategies for Implementation																	
Requirements (CHF): 94,455																	
P&B Output Code	S1.1: National Society capacity building and organizational development objectives are facilitated to ensure that National Societies have the necessary legal, ethical and financial foundations, systems and structures, competences and capacities to plan and perform	# of motivated volunteers who are protected and Insured. Target: 500															
	Output S1.1.4: National Societies have effective and motivated volunteers who are protected	# of volunteers insured and geared with protective equipment. Target: 500															
	Activities planned Week	1	2	3	4	5	6	7	8	9	10	11	12	13	14	15	16
AP040	Ensure that volunteers are insured																
AP040	Ensure volunteers' safety and wellbeing (visibility)																
P&B Output Code	Outcome S2.1: Effective and coordinated international disaster response is ensured	International support has been coordinated and provided. Target: yes															
	Output S2.1.1: Effective and respected surge capacity mechanism is maintained.	# of surge deployments to the operation through Rapid Response. Target: 1															
	Activities planned Week	1	2	3	4	5	6	7	8	9	10	11	12	13	14	15	16
AP046	Initial operational start-up and implementation support provided by IFRC for the host national society through Rapid Response																
P&B Output Code	Outcome S3.2: The programmatic reach of the National Societies and the IFRC is expanded.	# of Lessons Learned workshop. Target: 1															
	Output S3.2.1: Resource generation and related accountability models are developed and improved	M&E plan produced. Target: Yes															
	Activities planned Week	1	2	3	4	5	6	7	8	9	10	11	12	13	14	15	16
AP058	Development of M&E plan and follow up with NS																
AP058	Translation of documents																
AP058	Lessons learnt workshop																

Funding Requirements

International Federation of Red Cross and Red Crescent Societies

all amounts in
Swiss Francs
(CHF)

DREF OPERATION

MDRDZ008 - Algeria - Algeria Forest
Wildfire

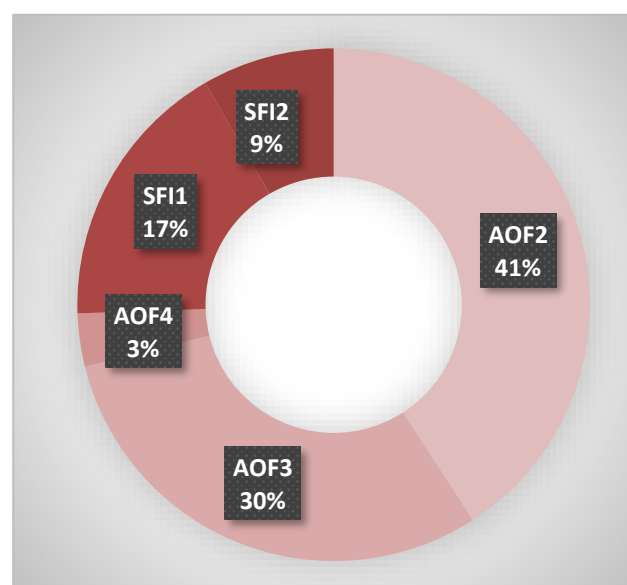
24/08/2022

Budget by Resource

Budget Group	Budget
Shelter - Relief	32,000
Clothing & Textiles	100,000
Food	137,000
Medical & First Aid	15,005
Utensils & Tools	10,000
Relief items, Construction, Supplies	294,005
International Staff	20,000
Volunteers	12,285
Personnel	32,285
Workshops & Training	12,000
Workshops & Training	12,000
Information & Public Relations	9,000
General Expenditure	9,000
DIRECT COSTS	347,290
INDIRECT COSTS	22,574
TOTAL BUDGET	369,864

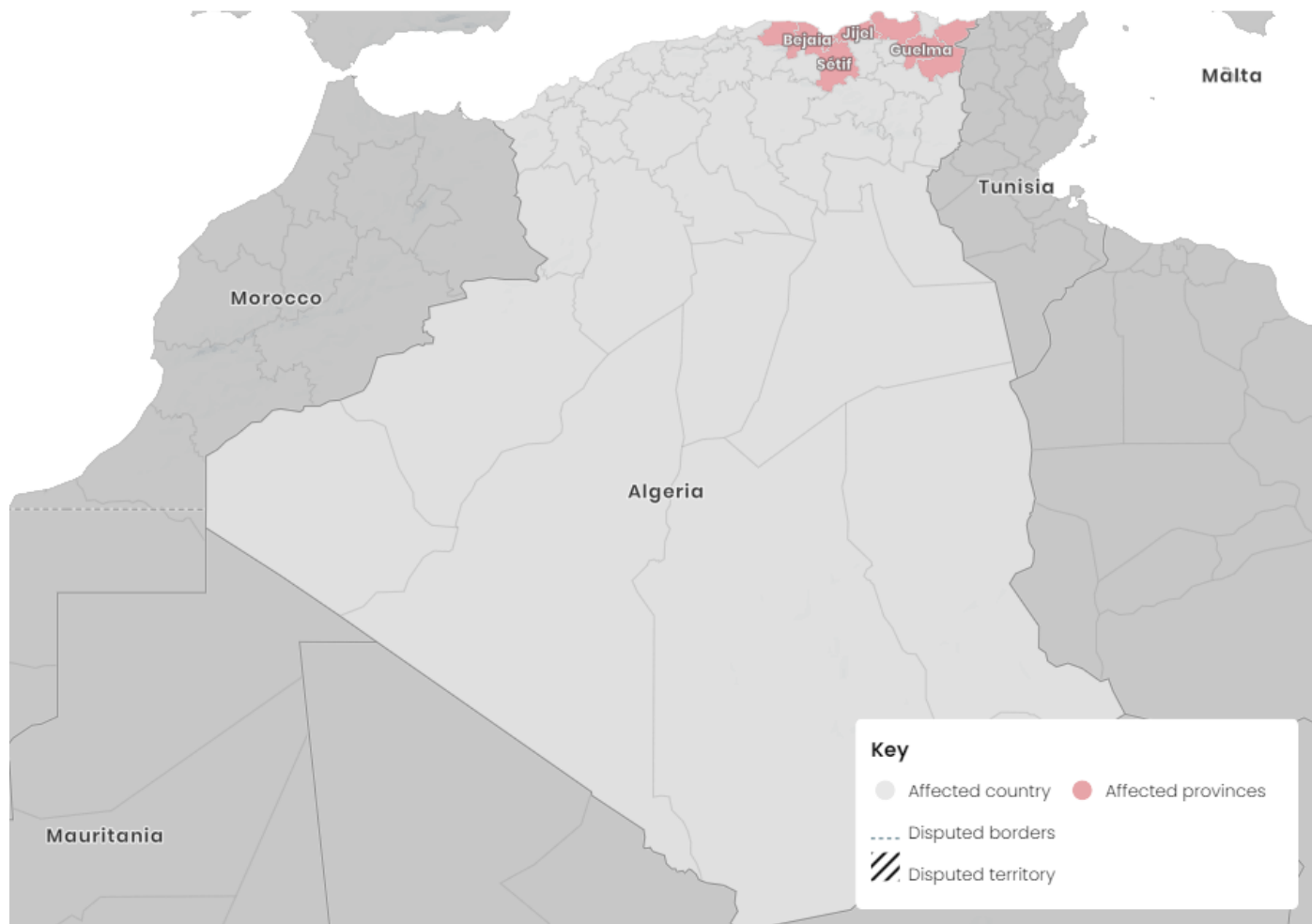
Budget by Area of Intervention

AOF1	Disaster Risk Reduction	
AOF2	Shelter	151,230
AOF3	Livelihoods and Basic Needs	111,825
AOF4	Health	12,354
AOF5	Water, Sanitation and Hygiene	
AOF6	Protection, Gender and Inclusion	
AOF7	Migration	
SFI1	Strengthen National Societies	63,570
	Effective International Disaster	
SFI2	Management	30,885
	Influence others as leading strategic	
SFI3	partners	
SFI4	Ensure a strong IFRC	
TOTAL		369,864



**+CIFRC****DZA: Fire - 2022-08 - Wildfire**

August 26, 2022



The maps used do not imply the expression of any opinion on the part of the International Federation of Red Cross and Red Crescent Societies or National Societies concerning the legal status of a territory or of its authorities, Data sources: IFRC, OSM contributors, Map box.

Reference documents



Click here for:

- Previous Appeals and updates
- Emergency Plan of Action (EPoA)

For further information, specifically related to this operation please contact:

In the Algerian Red Crescent

- **Présidente:** Madame Ibtissem HAMPLAOUI; phone: +213023307275; email : Présidente@cra.dz
- **Coordinateur des programmes:** M. Ahmed BERBAR; phone: +213661574430; email: ahmedberbar@hotmail.com

In the IFRC

- **IFRC Algeria Delegation:** Rania Ahmed, Acting Head of Country Delegation; phone: +961 71 802 791 email: Rania.AHMED@ifrc.org
- **IFRC Regional Office:** Dr. Hosam Faysal, Health, Disasters, Climate & Crises (HDCC)- MENA; phone +961 71 802 916; email: hosam.faysal@ifrc.org
- **IFRC Regional Office:** Nader Bin Shamlan, MENA Operations Coordinator; phone +961 81 131 074; email Nader.BINSHAMLAN@ifrc.org.

In IFRC Geneva

- Rena Igarashi, Senior Officer, Operations Coordination; phone: +41 (0) 79 960 2532; email: rena.igarashi@ifrc.org
- Eszter Matyeka, DREF Senior Officer; phone: +41 75 419 8604; e-mail eszter.matyeka@ifrc.org

For IFRC Resource Mobilization and Pledges support:

- **IFRC Regional Office:** Luca PECIAROLO, MENA Acting Regional Head, Strategic Engagement and Partnerships; phone: +961 81311918; email: Luca.PECIAROLO@ifrc.org

For In-Kind donations and Mobilization table support:

- **IFRC Regional Office:** Goran Boljanovic, Head of Global Humanitarian Services & Supply Chain Management (GHS & SCM), email: goran.boljanovic@ifrc.org.

For Performance and Accountability support (planning, monitoring, evaluation and reporting enquiries)

- **IFRC MENA Regional Office, Beirut:** Nadine Haddad, Regional PMER Manager; phone +961 71 802 775; email: Nadine.haddad@ifrc.org

How we work

All IFRC assistance seeks to adhere to the **Code of Conduct** for the International Red Cross and Red Crescent Movement and Non-Governmental Organizations (NGO's) in Disaster Relief and the **Humanitarian Charter and Minimum Standards in Humanitarian Response (Sphere)** in delivering assistance to the most vulnerable. The IFRC's vision is to inspire, encourage, facilitate and promote at all times all forms of humanitarian activities by National Societies, with a view to preventing and alleviating human suffering, and thereby contributing to the maintenance and promotion of human dignity and peace in the world.