



A man collecting his relief items (a household hygiene kit, jerry can and bucket) at a distribution site in Charsadda, KP. (Photo: Norwegian Red Cross)

<p><b>Emergency appeal No:</b> MDRPK023  <b>Emergency appeal launched:</b> 28/08/2022  <b>Operational Strategy published:</b> 06/09/2022</p>	<p><b>Glide No:</b>  <a href="#">FL-2022-000270-PAK</a></p>
<p><b>Operation update #1</b>  <b>Date of issue:</b> 14/09/2022</p>	<p><b>Timeframe covered by this update:</b>          From 23/07/2022 to 07/09/2022</p>
<p><b>Operation timeframe:</b> 16 months          (23/07/2022 - 31/12/2023)</p>	<p><b>Number of people being assisted:</b> 324,040</p>
<p><b>Funding requirements (CHF):</b>          CHF 25 million through the IFRC Emergency Appeal          CHF 26.5 million Federation-wide</p>	<p><b>DREF amount initially allocated:</b>          CHF 1 million</p>

*To date, this Emergency Appeal, which seeks CHF 25,000,000, is four per cent funded<sup>1</sup>. Further funding contributions are needed to enable Pakistan Red Crescent Society, with the support of the IFRC, to continue with the relief efforts and provide humanitarian assistance to the people affected by floods.*

<sup>1</sup> This figure includes hard pledges and in-kind contributions to the IFRC Secretariat Appeal as of 12 September 2022, while there are many more soft pledges that are being negotiated and processed, bringing the percentage up to 11. Federation-wide data on funding is being collected and can hopefully be included in the next update.

# A. SITUATION ANALYSIS

## Description of the crisis

Since 14 June 2022, Pakistan has been experiencing ongoing record monsoon rains across the country causing destructive floods and landslides, and displacing millions of people. As of 9 September, according to the National Disaster Management Authority (NDMA), nearly 1,400 individuals have died including 499 children, well over 1.7 million houses have been damaged or destroyed, and overall, more than 33 million people – representing 15 per cent of Pakistan’s population – have been affected across 86 districts in Azad Jammu and Kashmir (AJK), Balochistan, Gilgit Baltistan (GB), Khyber Pakhtunkhwa (KP), Punjab and Sindh provinces.<sup>2</sup>

The floods have compounded existing vulnerabilities and hardships including drought, food insecurity, the pandemic, gaps in health and sustainable solutions. There has been an increase in fatalities due to limited availability and accessibility to health services in the affected areas. Children are malnourished in Sindh and Balochistan, the two most affected provinces, and are falling sick after being exposed to the weather. Various outbreaks of water-borne diseases and the increase of mosquitoes have triggered a health emergency within the existing emergency in the country. More than 750,000 livestock have been killed, significantly affecting many of the affected populations’ means of sustenance and livelihood. The already acute food insecurity situation particularly in Sindh and Balochistan has become bleaker with 3.6 million acres of crops and orchards now affected.

Damage to infrastructure has exacerbated the humanitarian situation, the partial and/or complete destruction of over 6,600km of roads and 269 bridges<sup>3</sup> continue to impede people’s ability to flee to safer areas or travel to markets, hospitals, or access other vital services, and limits aid delivery to those in need.

Flood waters in Sindh province remain high and continue to rise as rainfall continues in northern Pakistan. This is indicative of possible further flood damages expected especially in the already badly hit Sindh province. Pakistan Meteorological Department has also highlighted that continuing rainfall may trigger landslides in Kashmir, hilly areas of KP and GB during the period of 10-14 September. Meanwhile, forced by the circumstances, the government is adopting alternative strategies to reduce damages by releasing flood waters from overflowing lakes in Sindh province causing controlled flooding in pre-decided communities. However, it is expected that such strategies could collaterally lead to more people being displaced as seen with Manchar lake in Sindh, Pakistan’s largest lake, which has already displaced more than 100,000 people and is still at risk of overflowing<sup>4</sup>.

## Summary of response

### Overview of the host National Society and ongoing response

PRCS has been responding to the ongoing floods since its onset in July. PRCS enjoys access and acceptance across the country with more than 60 district branches present in all seven provinces and a roster of active volunteers with existing disaster response capacity. The role of the PRCS as an auxiliary to the public authorities is embedded within the National Disaster Management Plan among other first responder entities. Additionally, PRCS has a Memorandum of Understanding (MoU) signed with the NDMA for cooperation and capacity enhancement in preparedness and response. Engaged in the coordination mechanism, the PRCS response operation is developed in coordination with the government, complementing and contributing directly to the government’s response plan led by the NDMA. Similar coordination efforts are carried out at the provincial and district level in close coordination with the provincial and district disaster management authorities.

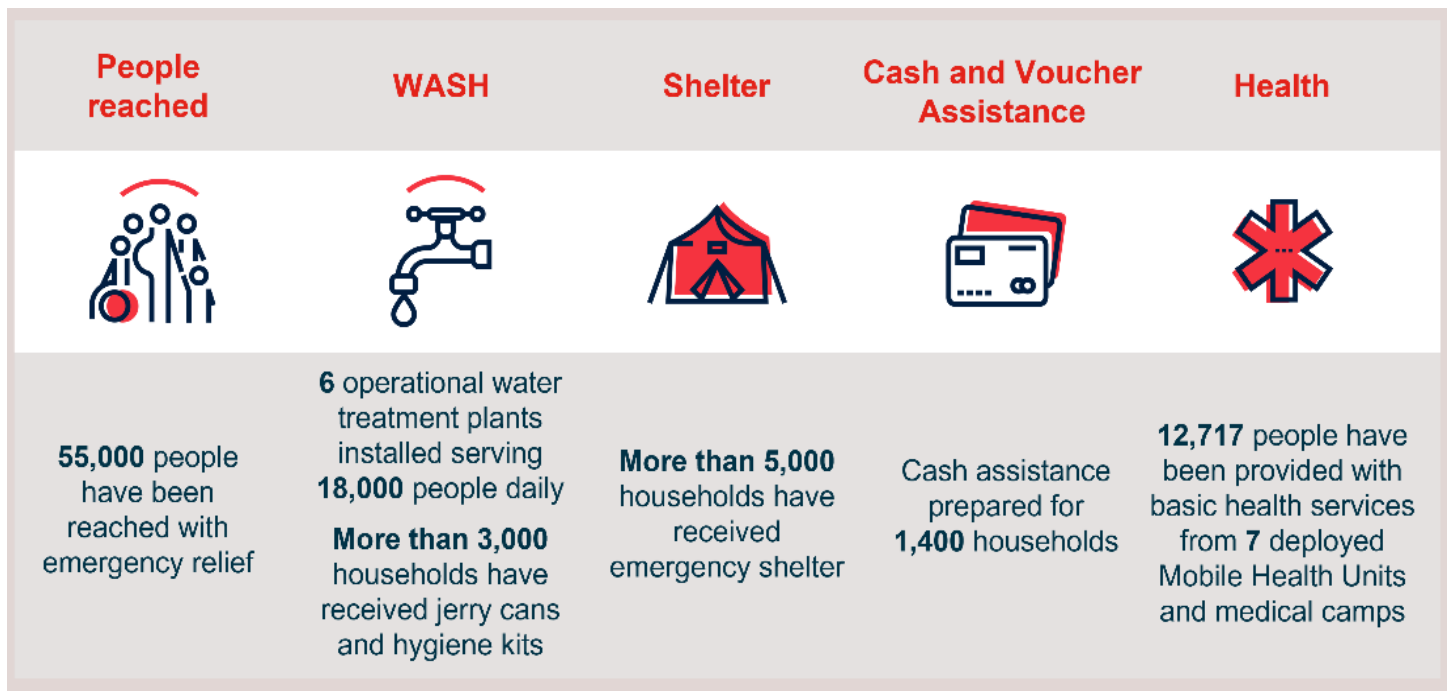
---

<sup>2</sup> [NDMA Monsoon Sitrep as of 9 September 2022](#)

<sup>3</sup> [NDMA Monsoon Sitrep as of 9 September 2022](#)

<sup>4</sup> <https://www.bbc.com/news/world-asia-62764224->

IFRC initially released CHF 1 million from its Disaster Response Emergency Funds (DREF) to PRCS in July to respond to badly affected districts in Sindh, Balochistan, KP and Punjab, with the interventions still ongoing. As the situation continued to aggravate, IFRC launched an emergency appeal of CHF 25 million to expand PRCS's response to reach over 320,000 of the most affected and vulnerable people in 34 flood hit districts across the country over the period of 16 months.



Note: This is the current total reach of the Federation-wide operation

**Currently PRCS is responding** with Federation-wide support in Sindh, Balochistan, KP, Punjab and GB through more than 16 branches, 338 volunteers, and 58 rapid response personnel, and has already reached over 55,000 people with emergency relief. The NS has deployed seven mobile health units already providing 12,717 people with basic health services and has installed and operationalized six water treatment plants serving approximately 18,000 people daily with safe water. Additionally, cash assistance is in the process of being provided to affected households with 1,400 households already registered. Jerry cans and household hygiene kits have been distributed to more than 3,000 households and emergency shelter to over 5,000 households.



A woman is in the process of being registered for cash assistance by a PRCS volunteer in Jaffarabad, Balochistan. (Photo: PRCS)

IFRC has deployed or sent out alerts to ten Rapid Response staff profiles and is in the process of deploying three Emergency Response Units (ERU) – Relief, Logistics, and WASH ERU to be based in Sindh. An assessment cell is also being activated to coordinate Federation-wide participation in the inter-sectoral and inter-agency assessments and needs analysis, and the Surge Information Management System (SIMS) is activated.

There are currently four Movement partners present in the country: German Red Cross (GRC), Norwegian Red Cross (NRC), Turkish Red Crescent (TRCS) and ICRC. Within the current response, GRC with the support of the German Federal Foreign Office and other partners has mobilised around CHF 2.5 million. GRC plans to support 41,300 flood-affected families in 14 districts of Sindh, KP and Punjab through 730 hygiene promotion sessions

and the distribution of 23,300 household hygiene kits, 13,500 kitchen sets, and 18,000 food parcels. NRC is supporting the deployment of five mobile health units in four districts of KP - having already reached 5,486 people, health and hygiene awareness sessions reaching 2,985 people, and distribution of 900 household hygiene kits, jerry cans and buckets to the affected population in two KP districts. NRC is planning to support the distribution of an additional 10,100 hygiene kits in Sindh with 5,000 hygiene kits already in the process of being dispatched to the field. TRCS is supporting relief assistance, having already distributed 350 household hygiene kits, 1,500 mosquito nets, 600 jerrycans, 30 tents and 370 food parcels through PRCS to the most affected households in Sindh and Balochistan. The TRCS is also in the process of supporting the distribution of 1,450 household hygiene kits, 1,700 food parcels, 670 tents, 2,000 blankets, 335 mattresses and 300 other NFIs.

In addition, Kuwait Red Crescent, Red Cross Society of China, Iranian Red Crescent, Qatar Red Crescent, Canadian Red Cross, British Red Cross, Finnish Red Cross, and Italian Red Cross are supporting remotely in the areas of HR including ERUs, provision of tents and NFIs.

Besides that, the Ministry of Interior, Disaster and Emergency Management Presidency of Turkiye and TRCS is jointly organizing the delivery of six consignments of food and NFIs through the Goodness Train initiative. ICRC continues to support mobile health units and first aid activities in the response.

## Needs analysis

### Needs analysis

Pending assessments, the priority needs for the affected people continue to be, as outlined in the Operational Strategy, emergency shelter, food, safe drinking water and access to sanitation, hygiene, and health care. Additionally, people will also require support in recovering their livelihoods due to the floods, including agricultural inputs for the approaching planting season and livestock support.

Increased cases of acute watery diarrhoea are detected and reported, as people have had to resort to using water sources contaminated by the flooding and poor access to practice good sanitation and hygiene. Stagnant waters increased cases of dengue and chikungunya within flood-affected areas. A large number of women are expected to give birth in the flood-affected areas of Sindh and Punjab province with limited to no access to the appropriate healthcare assistance. With the lack of sufficient health facilities and staff, there is a high risk of human loss in the flood-affected areas with the situation further exacerbated for women and children. Needs in the health and WASH sectors are progressively increasing, including the need for vector control measures.

IFRC is assembling an assessment cell to coordinate Federation-wide participation in the interagency cross-sectoral detailed assessments planned with other humanitarian agencies inclusive of UN agencies in Pakistan. The assessment cell will focus on analysing primary data to provide information for operational decisions while preparing to support the National Society with primary needs assessment integration. The assessments are being conducted to collect more in-depth data on needs for planning and targeting ensuring Protection, Gender and Inclusion needs, and concerns are integrated into sectoral activities. PRCS, IFRC and in-country PNSs will share responsibilities geographically in conducting assessments using a standardized methodology provided by IFRC. Multi-sectoral needs assessments have been completed in Balochistan by the humanitarian agencies, with the report in the process of being developed. Meanwhile, assessments in Sindh and KP are planned to be conducted in the coming weeks.

## Operational risk assessment

There are no major changes to the operating environment risk assessment since the publication of the Operational Strategy. IFRC is carrying out a security assessment focusing on Sindh province at the time of reporting in order to prepare for the planned field hub. The next Operational Update may expand on possible additional operational risks

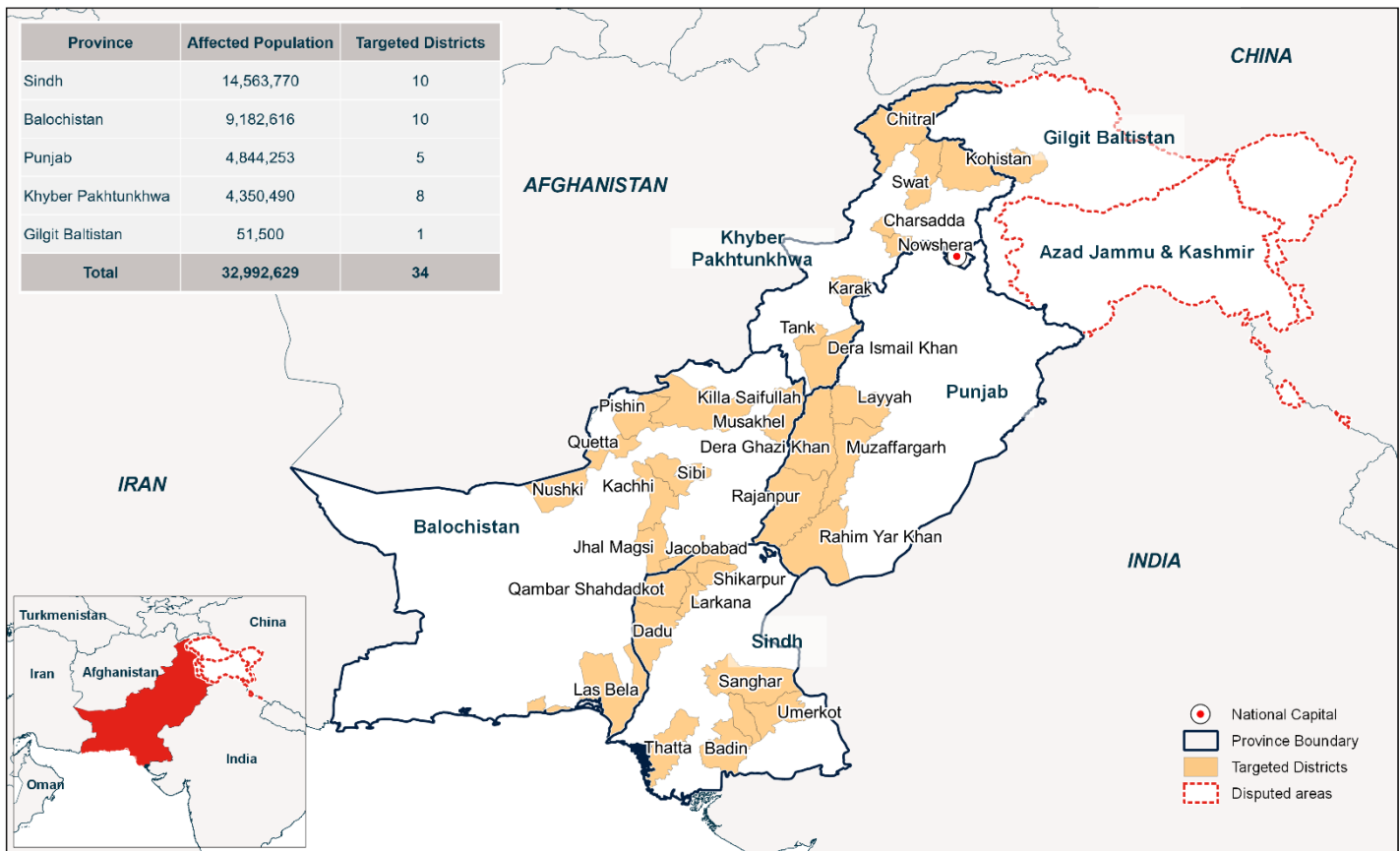
stemming from the assessment. Mitigating measures to the foreseen risks have been taken, for instance by reinforcing the operational staff capacity of PRCS and IFRC through local and international rapid response to minimize delays. IFRC is undertaking operational procurements also in order to alleviate pressures on the National Society staff.

## B. OPERATIONAL STRATEGY

### Update on the strategy

#### Pakistan: Monsoon Floods IFRC Operation Targeted Districts

Produced: 12 September 2022



The maps used do not imply the expression of any opinion on the part of the International Federation of the Red Cross and Red Crescent Societies or National Societies concerning the legal status of territory or its authorities. Map data sources: OCHA, ICRC, IFRC.

The current [Operational Strategy](#) supported by IFRC includes relief, early recovery, and recovery activities to provide for the immediate needs as well as resilience-building of the affected population. It also focuses on the response capacity and readiness of PRCS and the affected communities. No changes have been made to the Operational Strategy which was published on 6 September 2022. Revisions are expected to be incorporated once detailed on-ground assessments are completed. It is already expected that the number of mobile health units (MHUs) may be revised upward, directly increasing the overall number of people targeted to be reached through the EA operation, significantly exceeding the current set target.

IFRC coordinates the membership to work together to ensure maximum utilisation of resources available. IFRC Secretariat and the in-country PNSs are discussing a framework design based on the Federation Wide Approach, whereby the best-positioned member, with proximity to affected communities and PRCS branches, will lead the implementation support to PRCS in that geographical area. IFRC will focus efforts through the ERUs in Sindh province

to begin, where the emergency situation is still deteriorating, while in-country Movement partners are scaling up support in KP, Balochistan, and Sindh provinces owing to existing presence and programmes.

IFRC Secretariat's focus is on the coordination of information from assessments and analysis, quality assurance, and risk control measures, and harnessing global resources to support implementation scale-up through ERUs. Furthermore, the IFRC secretariat will continue to lead in National Society development and capacity-building efforts, harnessing the resources across the Movement. Initially, IFRC is looking to set up a hub in Sindh province, providing administration, security, and logistics capacity to members to reinforce PRCS. The intention is for the ERUs to focus on this area.

## C. DETAILED OPERATIONAL REPORT

### STRATEGIC SECTORS OF INTERVENTION

	<b>Shelter, Housing and Settlements</b>	Female > 18: 4,895	Female < 18: 0
		Male > 18: 5,094	Male < 18: 0
<b>Objective:</b> <i>The National Society will respond in a principled manner to the emergency shelter needs of flood-affected people by providing emergency shelter items and winterisation kits to affected families.</i>			
<b>Key indicators:</b>	<b>Indicator</b>	<b>Actual</b>	<b>Target</b>
	<i># of households targeted for the provision of winterization kit in the response period<sup>5</sup></i>	0	16,000
	<i># of households targeted for shelter assistance in the response period<sup>6</sup></i>	1,427	16,000
<p>PRCS distributed 1,427 emergency family tents in districts in KP and Sindh provinces to families whose houses were completely destroyed and had not received any shelter assistance from the government and/or any other organization. PRCS is planning to distribute an additional 10,000 tents in the coming week in badly affected districts in Sindh and Balochistan where the most devastation is. With the shelter needs continuing to be the most pressing need at hand alongside food assistance, discussions are ongoing on the possible expansion of coverage through the distribution of tents based on secondary data received. The operation is also looking into diversifying assistance to include the distribution of tarpaulins and shelter tool kits as an alternative to tents to address early recovery needs as well.</p> <p>Vulnerability criteria-based prioritized families will also be provided with winterization kits (clothing) planned to be distributed in specific districts of Sindh, Balochistan and KP equipping them with the means to face the winter season. The intervention is planned for November with the procurement process to be initiated soon following the international standards on the kit specification.</p> <p>Additionally, an ERU Relief, currently being mobilized will support relief interventions inclusive of emergency tents, ensuring verified selection process, distribution and post-distribution monitoring.</p>			

<sup>5</sup> Indicator has been modified to measure households instead of people linked with the number of items distributed.

<sup>6</sup> Indicator has been modified to measure households instead of people linked with the number of items distributed.



## Livelihoods

Female > 18: 0

Female < 18: 0

Male > 18: 0

Male < 18: 0

### Objective:

*To address the long-term recovery needs of the flood-affected population through the provision of livestock, business support grants, and agriculture inputs.*

### Key indicators:

#### Indicator

**Actual**

**Target**

*# of targeted households were provided livestock as source of livelihood.*

0

10,000

*# of household livelihood from agriculture restored through the provision of material or cash support.*

0

4,400

*# of household's small-scale community-based business was restored through capacity building and provision of business grants.*

0

2,000

PRCS aims to provide assistance to address the long-term recovery needs of the flood-affected population tailored to ensure sustainability within the setting of the district. Assistance will be provided through the provision of livestock, agricultural inputs and business support grants in the recovery phase of the emergency. The interventions will be implemented based on the findings of the detailed needs assessments planned to be conducted. With the planting season fast approaching, prioritization will be given to implementing agriculturally based intervention as soon as the flooding water recedes in the affected districts.

Currently, in the response phase, PRCS is providing immediate food assistance through the support of in-country partners and their own initiatives by distributing cooked food as well as food parcels.



## Multi-purpose Cash

Female > 18: 0

Female < 18: 0

Male > 18: 0

Male < 18: 0

### Objective:

*To address the immediate basic needs and contribute to increased purchasing power of targeted vulnerable households through the provision of multipurpose cash grants.*

### Key indicators:

#### Indicator

**Actual**

**Target**

*# of households who successfully received cash after being identified and processed for cash assistance.*

0

30,000

PRCS aims to provide immediate relief and access to food and basic necessities to 30,000 HHs through multipurpose cash assistance of PKR 16,000 (CHF 72) across the 34 target districts. The cash grant amount is based on the minimum expenditure basket (MEB) from the PRCS contingency plan 2021. PRCS has already registered 1,400 households across six districts in KP and Balochistan where financial service providers can reach the selected households in coordination with the district authorities.



## Health & Care

(Mental Health and psychosocial support /  
Community Health / Medical Services)

Female > 18: 1,393

Female < 18: 884

Male > 18: 1,254

Male < 18: 919

### Objective:

*To reduce immediate morbidity and mortality, and to prepare for, prevent, and rapidly contain emerging health risks in targeted districts across four provinces in flood-affected communities building their long-term resilience.*

### Key indicators:

Indicator	Actual	Target
# of staff and volunteers trained on Psychological First Aid	0	180
# of people provided with Psychological First Aid <sup>7</sup>	0	2,500
# of volunteers and staff provided with FA personal pouches	0	800
# of consultations through the NS's medical services or different clinical ERU configurations of the RCRC Movement.	4,450	324,040 (min)
# of people reached with antenatal services in emergencies	0	3,880
# of LLINs (long-lasting insecticide-treated nets) distributed	0	8,000
# of BHUS rehabilitated through solarization	0	5

PRCS provided 4,450 primary healthcare consultations (1,393 females, 1,254 males, 1,803 children) to the flood-affected population through the deployment of two MHUs in Jhal Magsi and Jaffarabad; two of the most affected districts from the very start of the floods. PRCS is planning to deploy an additional 28 MHUs across some of the most affected districts in Sindh, Balochistan and Punjab, aiming to increase accessibility to immediate primary healthcare assistance. NRC will continue to provide support in KP province through its five MHUs already deployed in Nowshera, Charsadda, Tank, and Dera Ismail Khan districts. All MHUs have both female and male staff present to ensure access to both gender groups within the cultural context of the targeted districts.

IFRC is in discussions with WHO and UNICEF to seek support in getting Interagency Emergency Health (IEH) kits equipped with medicine and medical equipment to meet the initial primary healthcare needs of a population of 10,000 people for three months. The kits will be used by the MHUs planned to be deployed aiming to assist the flood-affected population whose access to routine healthcare services. Additionally, psychological first aid will also be provided through the MHUs, and volunteers engaged in response for which they will be provided further training.

PRCS is already providing first aid response through their trained volunteers in the field across the different districts outside of the appeal coverage. The operation aims to further equip 800 staff and volunteers with first aid personal pouches to be able to provide first aid assistance while in the field and engaged in the response. PRCS staff and volunteers will also be trained in epidemic control and public health in emergencies. PRCS is also planning to distribute 8,000 LLINs under the appeal with separate distributions ongoing through the support of TRCS.

<sup>7</sup> Indicator has been added to highlight the reach of psychological first aid assistance through the trained volunteers under the response.



## Water, Sanitation and Hygiene

Female > 18: 3,087

Female < 18:

Male > 18: 3,213

Male < 18:

### Objective:

Communities have increased access to affordable, appropriate, accessible, safe and environmentally sustainable water, sanitation and hygiene services.

### Key indicators:

Indicator	Actual	Target
# of litres of safe water distributed through RCRC emergency water supply (cumulative)	715,500	120,000/day for 2 months
# of household latrines constructed	0	500
# of households provided with hygiene kits	900	4,000
# of staff and volunteers trained in emergency WASH	20	500


PRCS has deployed six water treatment and filtration plants across two districts in KP (Karak and Tank), two districts in Balochistan (Jhal Magsi and Jaffarabad) and two districts in Sindh (Dadu and Larkana) increasing direct access to safe water for the affected population of the selected districts. A total of 715,500 liters of potable water have been distributed to the people in need. PRCS is in the process of deploying an additional water treatment plant in Jacobabad district in Sindh province where challenges to access safe water have only further been exacerbated by the current ongoing floods.



A water treatment plant being installed by trained PRCS staff in Dadu, Sindh. (Photo: PRCS)

PRCS has reached 6,300 people (3,087 females, 3,213 males) through 900 household hygiene kits distributed out of the planned 4,000 so far in two districts of KP (Tank and Karak). PRCS has the required number of hygiene kits in storage from the disaster preparedness stock for immediate use. PRCS is now focusing on identifying the most vulnerable households to be provided assistance in the target districts. The planned needs assessment will further support the identification process and ensure a more inclusive approach to engage all population groups present.

To ensure WASH emergency standards are being followed and applied within field response activities, A training in emergency WASH was held at NHQ where 20 relevant PRCS staff and volunteers (all males) from NHQ and all PHQs were trained. A WASH Emergency Response Unit has also been requested to be deployed in Sindh province aiming to provide more technical assistance in the field in the most affected province. NRC has expressed that it is ready to support through the deployment of its Water Supply Rehabilitation (WSR) ERU module.

	<b>Protection, Gender and Inclusion</b>	Female > 18: 0	Female < 18: 0
		Male > 18: 0	Male < 18: 0
<b>Objective:</b>	<i>The response will be implemented by applying a PGI lens ensuring that support is provided to the most vulnerable highlighted under the PGI analysis focusing on their dignity, accessibility, participation and safety, through mainstreaming PGI and PGI-focused actions.</i>		
	<i>The awareness of communities will be enhanced as to protection concerns and two-way referral pathways for Sexual and Gender-Based Violence (SGBV) survivors while child protection will be ensured for a safe and secure environment for affected and vulnerable communities.</i>		
<b>Key indicators:</b>	<b>Indicator</b>	<b>Actual</b>	<b>Target</b>
	<i># of sectoral or PGI assessments conducted using the PGI Minimum Standards</i>	0	10
	<i># of staff and volunteers oriented on implementing the PGI Minimum Standards<sup>8</sup></i>	0	460
	<i># of referrals made (SGBV, Child Protection or other) via a common referral pathway</i>	0	5

The operation is in the process of aligned implementation with the IFRC’s Minimum Standards for PGI in emergencies, applying the Dignity Access Participation and Safety (DAPS) framework. Integrated sectoral needs assessments are jointly being conducted with other in-country agencies such as UN agencies (UNHCR, UNFPA, UNICEF). The assessments will also provide a PGI vulnerability analysis which will further allow for a more tailored approach for all interventions to ensure access and inclusion of the marginalized population groups and most vulnerable present in the targeted districts. PRCS own assessment tools and formats will also be revised to ensure PGI needs are also being identified within its cross-cutting nature across the different sectors and on its own. Additionally PRCS staff and volunteers engaged in the response will be sensitized on the use of the IFRC minimum standards of PGI in emergencies to ensure the application of a PGI lens within the implementation.

PRCS and IFRC will establish two-way referral pathways for Sexual and Gender-Based Violence (SGBV) and child protection at the district and provincial levels in the targeted districts. Communities will be sensitized on existing

<sup>8</sup> Indicator has been revised to be more specific as to who the target is and what the activity is.

protection concerns and how they can access assistance through the referral pathways established through awareness-building sessions. PRCS child safeguarding analysis will also be conducted for the operation to further identify areas to improve to ensure safeguarding measures are in place within the operation.



## Community Engagement and Accountability

Female > 18: 0

Female < 18: 0

Male > 18: 12

Male < 18: 0

### Objective:

*Community engagement and accountability will support the response to have a thorough understanding of community needs, priorities, and context, while ensuring ways of working collaboratively with people and communities by integrating meaningful community participation, timely, open, and honest communication, and mechanisms to listen to and act on feedback throughout the response.*

### Key indicators:

#### Indicator

**Actual**

**Target**

*# of complaints received through feedback mechanisms*

12

1,600

*# of staff, volunteers and leadership trained on community engagement and accountability (disaggregated by staff / volunteers / sex)*

0

25

Currently, PRCS is utilizing its helpline numbers at National Headquarters (NHQ) and Provincial Headquarters (PHQs) as their main community feedback mechanisms in place. PRCS volunteers attending to the 1030 helpline at NHQ, received a total of 30 feedbacks (2 females, 28 males) out of which were 12 complaints. The complaints highlighted the non-accessibility of provincial helpline numbers to ask for further guidance on PRCS assistance under the flood response operation. Further investigation identified HR gaps at the provincial level to support the feedback mechanism. PRCS existing staff and volunteers who were previously engaged in the helpline are now being utilized in the field for direct response. PRCS and IFRC are in the process of re-evaluating the existing CEA mechanisms, while the NHQ 1030 helpline continues to be available for use. Additionally, the response will focus on expanding CEA mechanisms to include the utilization of PRCS volunteers to establish a two-way feedback platform to increase further access to the affected population factoring in the pre-existing challenges of accessibility and communication channels.



## Risk Reduction, climate adaptation and Recovery

Female > 18: 0

Female < 18: 0

Male > 18: 0

Male < 18: 0

### Objective:

*To strengthen the resilience of targeted communities through enhanced climate smart risk reduction initiatives using an integrated programming approach.*

### Key indicators:

#### Indicator

**Actual**

**Target**

*# of people reached by RCRC through Disaster Risk Reduction (DRR) and climate change adaptation activities*

0

150,000

# of people trained in DRR related areas (vulnerability and capacity assessment or climate change adaptation, first aid, contingency planning, or emergency response)	0	150,550
# of communities that have formed community committees with the support of NSs, representing community people from all walks of life and working with specific roles related to disaster preparedness and risk reduction	0	80
# of communities that have developed and implemented the community plan of action for DRR with RCRC support	0	80
# of people reached by RCRC through disaster risk reduction Public Awareness Messaging and Public Education (PAPE) campaigns	0	150,000

PRCS will focus on strengthening community resilience through enhanced climate smart risk reduction initiatives based on the integrated vulnerability capacity assessments planned to be conducted in the most vulnerable communities in the recovery phase of the emergency. All activities planned will be implemented once the emergency phases out of the response phase which cannot be determined at the current time.

PRCS will provide long-term recovery support over the 16 months to address livelihood needs, enhance adaptation capacity through nature-based solutions, restore critical landscapes to build the resilience of communities and support both communities and partners in developing early warning and early action plans. It will also integrate climate risks across health and hygiene programmes.

## Enabling approaches



### National Society Strengthening

<b>Objective:</b>	<i>To strengthen and reinforce PRCS structures at the provincial and district levels, and the National Society volunteer base, while improving service delivery and PRCS footprints at the community level.</i>		
<b>Key indicators:</b>	<b>Indicator</b>	<b>Actual</b>	<b>Target</b>
	<i># of strategically located branches in the flood-affected regions offered capacity-building support</i>	16	26
	<i># of new branches/office opened in the flood-affected areas that increase the outreach of the NS</i>	0	10
	<i># of volunteers recruited/registered for supporting the NS response</i>	0	1,750

# of volunteers involved in the response operation that have increased their skills in response and management of operations	338	2,000
# of IFRC monitoring and support missions	0	20
# of volunteers provided with equipment for protection, safety and support (e.g., PSS) appropriate to the emergency	338	2,000

PRCS is currently engaging 16 of its branches (not inclusive of NHQ) in the emergency response under the appeal consisting of five PHQs (Sindh, Balochistan, Punjab, KP and GB) and 11 district branches (Larkana, Dadu, Sanghar, Jacobabad, Thatta, Mirpur Khas, DG Khan, Swat, Chitral, Kohistan, and DI Khan). Provincial branches are taking lead in coordination at the provincial level and are also providing a direct response within the provincial capital itself and districts where PRCS does not have a pre-existing branch. Similarly, district branches are also providing additional support to neighbouring districts where PRCS does not have a pre-existing branch, engaging their existing HR and volunteers strategically to support multiple locations. PRCS is in the process of mapping out HR needs in pre-existing district branches and identifying the new branches to be established in target districts where presence is limited.

PRCS is engaging 338 volunteers (128 females, 210 males) in the operation. The majority of the volunteers are already well-capacitated, and trained in emergency response modules under disaster response team curricula and others. Volunteers engaged in the response will be provided additional capacity-building opportunities to further strengthen the volunteer force directly responding in the communities over the 16 months.

PRCS and IFRC staff will regularize monitoring visits with access routes already in the process of being identified, following a monitoring schedule ensuring quality implementation as well as mitigating bottlenecks.



## Coordination and Partnerships

### Objective:

*Strengthening coordination within the IFRC membership and within the Movement to bring technical and operational complementarity and enhancing cooperation with external partners.*

### Key indicators:

#### Indicator

#### Actual

#### Target

*# of movement coordination meetings organized, where updates are provided to the Movement partners*

06

16

*Movement coordination mechanism is described and active*

No

Yes

A formal movement coordination mechanism is in the process of being developed on the basis of the Movement Coordination Agreement and will continue to evolve as per the situation and developments on the ground. IFRC is in discussions with the partners on the working modalities within the operation, with the coordination mechanism aiming to be established in the coming days.

IFRC has started daily response coordination meetings with the partners (in-country and remote) at the country level in early September with six meetings already conducted. The meeting provides a platform for IFRC and the partners to discuss daily developments, progress, challenges, the possible way forwards and complementary

collaborations and assistance. The discussion topics also further help foster a federation-wide approach to operation. Through the meetings, IFRC and the partners have agreed to effectively utilize existing resources and expertise in the country and on ground to maximize the reach through the operation.

IFRC Geneva organizes weekly partner calls for both in-country and out-of-country partners at a larger scale to provide updates and facilitate discussions on the latest developments on the grounds, queries and possible support opportunities.



## Shelter Cluster Coordination

<b>Objective:</b>	<i>Ensure active and close coordination with shelter actors to provide shelter assistance to those impacted.</i>		
<b>Key indicators:</b>	<b>Indicator</b>	<b>Actual</b>	<b>Target</b>
	<i># of Shelter Sector meetings attended by the IFRC relevant staff</i>	2	10
	<i># of coordination meetings done with the shelter cluster members</i>	2	12
	<i># of shelter workshops held</i>	0	3

The shelter sectoral meetings have been initiated with the International Organization of Migration (IOM) taking lead in the three most affected provinces (KP, Balochistan and Sindh). IOM is currently in the process of establishing a provincial-level coordination mechanism in all three provinces.

IFRC is coordinating with UN agencies to identify the needs for Shelter Cluster Coordination. So far there is no decision about the activation, but IFRC and IOM are working together to support shelter coordination in the country through sectoral meetings.



## Secretariat Services

<b>Objective:</b>	<i>Enable effective international disaster management coordination, strengthen the PRCS log, HR, finance, PMER, and information management for a better response in the current disaster and in the longer-term to benefit the National Society with enhanced support for its future operations.</i>		
<b>Key indicators:</b>	<b>Indicator</b>	<b>Actual</b>	<b>Target</b>
	<i>% of financial reporting respecting IFRC procedures</i>	0	100
	<i>% of operational staff for IFRC receive a security briefing</i>	25	100
	<i># of volunteers involved in response who are insured</i>	338	400

<i>Logistics department provides constant support to the National Society's logistics unit for replenishment and other procurements</i>	Yes	Yes
<i># of finance staff receiving financial reporting training</i>	0	26
<i>#of monitoring visits by PRCS/IFRC Programme/PMER staff throughout the response operation</i>	2	22
<i># of evaluations/reviews conducted for the emergency response</i>	0	2

As it is the early stages of the operation, IFRC has yet to process any financial reports. PRCS finance staff in the targeted provincial and district branches will be trained in the coming two weeks by IFRC, on financial procedures and standards to ensure understanding and compliance. Additionally, PRCS and IFRC will develop and follow a joint monitoring plan to ensure frequent monitoring is taking place by programmes and PMER staff as well as finance. The visits will identify if the implementation is aligned with the proposed operational strategy, if any missing needs are not being addressed, and any challenges and document lessons learned and best practices to further adapt the operation.

Staff is being briefed on the current security situation, while a wider security assessment is being carried out at the time of reporting to inform the operational security framework.

IFRC has engaged a procurement officer to support the operation procurements. An ERU Logistics has been alerted and is estimated to arrive by the end of the second week of September to support the PRCS warehouse in Haripur, transportation, and importation of relief items.

## D. FUNDING

<b>IFRC Secretariat Coverage of the EA</b>	<b>Amount Raised (CHF)</b>	<b>Funding Gap (CHF)</b>	<b>Coverage %</b>
Total hard pledges	540,863	24,459,137	2%
Total hard pledges + in kind	913,850	24,086,150	4%

The IFRC funding ask of CHF 25 million in this Appeal is currently 11 per cent covered as of 12 September, with soft pledges included. The Federation-wide funding ask (multilateral and bilateral contributions) stands at 19 per cent coverage, with soft pledges included. Bilateral contributions alone stand at 161 per cent coverage in reference to a funding ask of CHF 1.5 million.

## Contact information

For further information, specifically related to this operation please contact:

### In the Pakistan Red Crescent Society

- Dr. Adeel Nawaz, Secretary General; email: [sg@prcs.org.pk](mailto:sg@prcs.org.pk)
- Mr. Abaid Ullah Khan, Joint Director Operations; email: [npc@prcs.org.pk](mailto:npc@prcs.org.pk)

### In the IFRC Country Delegation for Pakistan

- Peter (Piwi) Ophoff, Head of Country Delegation; email: [peter.ophoff@ifrc.org](mailto:peter.ophoff@ifrc.org)
- Chiran Livera, Head of Floods Operations: [HEOPS.Pakistan@ifrc.org](mailto:HEOPS.Pakistan@ifrc.org)

### In the IFRC Asia Pacific Regional Office in Kuala Lumpur

- Alexander Matheou, Regional Director; email: [alexander.matheou@ifrc.org](mailto:alexander.matheou@ifrc.org)
- Juja Kim, Deputy Regional Director; email: [juja.kim@ifrc.org](mailto:juja.kim@ifrc.org)
- Joy Singhal, Head of HDCC unit; email: [joy.singhal@ifrc.org](mailto:joy.singhal@ifrc.org)
- Felipe Del Cid, Emergency Operations Manager; email: [felipe.delcid@ifrc.org](mailto:felipe.delcid@ifrc.org)
- Eeva Warro, Operations Coordinator; email: [opscoord.southasia@ifrc.org](mailto:opscoord.southasia@ifrc.org)
- Siokkun Jang, Logistics Manager; email: [siokkun.jang@ifrc.org](mailto:siokkun.jang@ifrc.org)
- Afrhill Rances, Communications Manager; email: [afrhill.rances@ifrc.org](mailto:afrhill.rances@ifrc.org)

### In IFRC Geneva

- Christina Duschl, Senior Officer Operations Coordination; email: [christina.duschl@ifrc.org](mailto:christina.duschl@ifrc.org)

### For IFRC Resource Mobilization and Pledges support:

- Sumitha Martin, Partnership and Resource Development; email: [sumitha.martin@ifrc.org](mailto:sumitha.martin@ifrc.org)

### For planning, monitoring, evaluation and reporting (PMER) enquiries

- Alice Ho, Head of PMER and Quality Assurance; email: [alice.ho@ifrc.org](mailto:alice.ho@ifrc.org)

#### Reference documents



Click here for:

- [Previous Appeals and updates](#)
- [Link to IFRC Emergency landing page](#)

## How we work

All IFRC assistance seeks to adhere the **Code of Conduct** for the International Red Cross and Red Crescent Movement and Non-Governmental Organizations (NGO's) in Disaster Relief, the **Humanitarian Charter and Minimum Standards in Humanitarian Response (Sphere)** in delivering assistance to the most vulnerable, to **Principles of Humanitarian Action** and **IFRC policies and procedures**. The IFRC's vision is to inspire, encourage, facilitate and promote at all times all forms of humanitarian activities by National Societies, with a view to preventing and alleviating human suffering, and thereby contributing to the maintenance and promotion of human dignity and peace in the world.