


www.ifrc.org
Saving lives,
changing minds.

Emergency Plan of Action (EPoA)

Sierra Leone: Flash Floods and Mudslide

 International Federation
of Red Cross and Red Crescent Societies

DREF Operation n°	MDRSL013	Glide n°:	FF-2022-000309-SLE
Date of issue:	19 September 2022	Expected timeframe:	04 months
Operation start date:	14 September 2022	Expected end date:	31 January 2023
Category allocated to the of the disaster or crisis: Yellow			
DREF allocated: CHF 382,337			
Total number of people affected:	12,903 (1,817 HH)	Number of people to be assisted:	11,688 (1,644 households)
Provinces affected:	Freetown: Western Area	Provinces/Regions targeted:	Kamayama, Tengbeh town, Kaningo, Kroobay, Wellington Colleh town, Culvert Mount Auorel, Looking town and Lumley.
Host National Society presence (n° of volunteers, staff, branches): Sierra Leone Red Cross Society has 16,527 active volunteers and members across the country, 60 staff and 13 branches.			
Red Cross Red Crescent Movement partners actively involved in the operation: International Federation of Red Cross and Red Crescent Societies. British Red Cross has also made collaboration commitment.			
Other partner organizations actively involved in the operation: Office of National Security (ONS), National Disaster Management Agency, World Vision, WFP, Ministry of Social Welfare, Goal, Save the Children, Concern amongst others.			

A. Situation analysis

Description of the disaster

Freetown, the capital city of Sierra Leone has been experiencing persistent torrential rains since mid-August 2022. The highest recorded incident was on Sunday 28 August 2022, with rains causing associated impacts, including flooding in low-lying areas as well as new episodes of landslides on a low scale. Major roads in the city centre were rendered impassable due to the flood waters, heavily constraining vehicles and pedestrians having to find alternative routes. The city continues to experience more heavy rains which may cause flooding in additional communities and increase the number of affected people.

An update from the Office of National Security (ONS) on 28 August reported flash floods and landslides affected seven communities including Kanikay, Culvert, Kaningo, Tengbeh Town, Looking town, Cassava town, and Brooks field. Houses have been flooded leaving residents trapped in the raging waters and their properties destroyed.

At Looking Town, a landslide covered two houses and some people are reportedly trapped in the rubble. The community managed to remove five people from the rubble. Four (04) of them had already died and the remaining one, a 7-year-old child was rescued alive with serious injury and has been taken to the Rokupa Government Hospital.

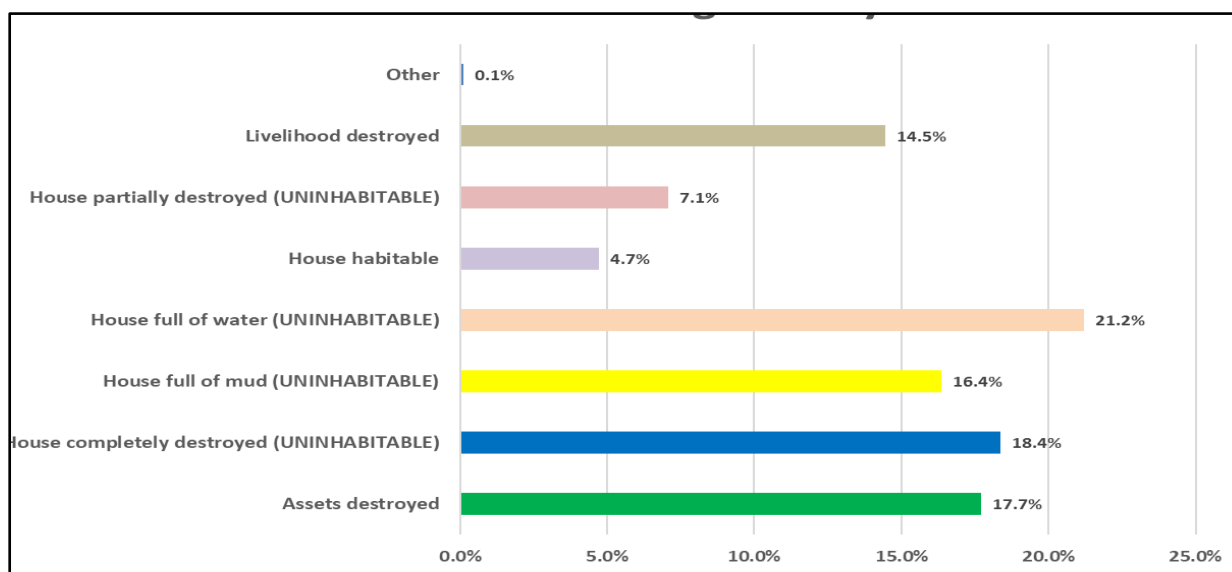


Landslide incident site in Freetown, Sierra Leone's capital (Photo: SLRCS)

At Brook Street, a perimeter fence collapsed and left some people trapped in the makeshift buildings annexed to the fence. The people were later assisted by the Red Cross volunteers and the immediate neighbourhood. Those who

sustained injuries were provided first aid services before conveying them to the hospital. Another building collapsed at Cassava farm off Leicester Road but detailed statistics on lives and property destroyed are not yet known. At Mary Street by Circular Road, an electrical pole has fallen due to the torrential rains with damage yet to be reported. Also, vehicular movement was disrupted on Bai Bureh Road, which is the most important route linking Freetown Central to the Eastern part by a tree that fell during the early hours of 28 August. The roadblocks impacted several responders' speedy presence such as the Sierra Leone Red Cross Society Volunteers and staff, the Fire Force team, and the Major of Freetown team and MSF.

On the impact of the disaster, the joint assessment with NDMA, SLRCS and others humanitarian agencies conducted from 29 August to 7 September reveals a total of 12,903 people (1,817 households) were affected, with 8 deaths, 79 injured, and 4 missing because of flash floods and landslides. Over 21% of the houses flooded by water and 16.4% hit by landslides are uninhabitable, and families need rental assistance as immediate support. Also, over 18% of the houses were destroyed. A total of 17.7% of the population across the 18 communities lost their assets to flood waters and mud, and over 14% of the affected population had their livelihoods destroyed. Below summarises the impact of flooding and landslides in affected communities:



Direct Impact of Flooding and Landslides @NDMA joint assessment data

The assessment report also indicated the flooding is the result of cumulative factors in the period of high rainfall in Sierra Leone. Floods were attributed to poor urban planning and irregular construction, poor waste management practices, reclaiming of swamps and banking waterways for construction, and extreme weather conditions and climate change. The slope failure and infrastructural collapse are due to poor urban planning, building along waterways, sand mining, and rock quarrying.



Culvert community in need of Humanitarian assistance due to flooding and landslides (Photo SLRCS)

Summary of the current response

Overview of Host National Society Response Action

The SLRCS's presence and local networks across Sierra Leone are well-established, including in Western Area affected by flooding and Landslides. SLRCS staff and volunteers were among the first responders working alongside community members, local authorities, and other agencies. A total of 3 staff and 33 volunteers from the onset of the disaster supported the 18 incident sites with needed services such as emergency first aid (dressing and redressing of wounds to 63 victims) and psychosocial support to 29 families, search and rescue, and transportation of 8 dead bodies to Connaught hospital mortuary. SLRCS on 29 August 2022 produced the first situation report and with support from IFRC update the Sierra Leone Emergency page on the [GO Platform](#) to inform the wider community of the disaster. The 33 volunteers continued providing humanitarian support to affected communities and were part of the multisectoral rapid assessment that was coordinated by the National Disaster Management Agency.



SLRCS Volunteers supporting rescue in a collapsed building (Photo: SLRCS)

SLRCS on 29 August 2022 produced the first situation report and with support from IFRC update the Sierra Leone Emergency page on the [GO Platform](#) to inform the wider community of the disaster. The 33 volunteers continued providing humanitarian support to affected communities and were part of the multisectoral rapid assessment that was coordinated by the National Disaster Management Agency.

Based on findings from the rapid assessments as well as analysis of secondary data, immediate needs include food assistance; emergency shelter and non-food items; emergency water, hygiene, and sanitation (WASH) support. Medium-term needs include supporting livelihoods recovery and the rehabilitation of WASH facilities (boreholes and latrines). Against the backdrop of affected communities losing almost everything they had to floods and landslides, with the government requesting partners to provide support to the affected population, the SLRCS leadership has engaged the Freetown Cluster Delegation on the need to support through an allocation from the Disaster Response Emergency Fund (DREF). This DREF operation will strengthen coordination with the government and other actors and will allow provision of immediate first aid assistance, shelter, livelihoods, PSS, and WASH, identified as the most urgent needs of the affected population. Also, the assessment shows over 383 pregnant and lactating women, and some 2,898 school children were affected. This operation will provide hygiene/dignity kits and education materials, respectively to these sets of people. In summary, our proposed intervention will focus on:

- First Aid support and Ambulance Services (ongoing)
- Psychosocial support to distressed families (ongoing)
- Rental and Livelihood support through Cash assistance
- Provision of dignity/hygiene kits to women/girls
- Support Children with educational material
- Emergency WASH focusing on water treatment, as well as rehabilitation of toilets and boreholes
- Support environmental health through sensitization on waste management, and hygiene promotion. Since community cleaning will be supported by other organizations including NDMA and Freetown City Council, volunteers during community engagement will raise awareness on the importance of surface water management, including cleaning of drainages in communities, with the aim of reducing also risks of water borne and vector borne diseases outbreaks. This will be critical especially with a forecast of heavy rains with additional flooding in the next three weeks by the Meteorological Agency.

The National Society has adequate human resource and financial management capacity to support this intervention at coordination and implementation levels. There are trained and experienced National Disaster Response Team Members at headquarters, and branches equipped to lead the process of implementation, monitoring, and reporting. Present strength in logistics and financial management is adequate to support such intervention at its current and escalation stages. The National Society has the capacity to manage large response needs because of its outstanding experience with Ebola response (2014 -2016) and the Covid-19 response (2020 - 2021). SLRCS leadership and NDRT team are participating in all the planning meetings convened by the National Disaster Management Agency (NDMA), which is the leading Government oversight for all Disaster Management and Response related incidents in Sierra Leone. Presently, the National Disaster Management Agency, World Vision, WFP, Ministry of Social Welfare, Goal, Save the Children, Concern and SLRCS are the only dependable partners in the response.

Lesson learned from previous operations will be capitalised in this intervention.

From previous operations, the National Society will take advantage of cash experience from DREF operations such as [MDRSL010](#). The main lessons in cash assistance that will be applied here is to engage both communities and institutions to ensure acceptance and clear information sharing on criteria and modalities. The same FSP will also be used in this operation.

Challenge on reporting and especially timely financial reporting will be improved by a dedicated finance focal point that will manage all funds transactions and payments during the intervention. Thus, that person will be deployed as NDRT finance focal point to support both HQ and branches financial management.

Failing to explain the limitation of one's work at the initial stage of intervention might attract other unrelated issues. The teams were not detailed enough to involve community members in the planning of the response and the beneficiary targeting as such, they were confronted with domestic issues. It is therefore necessary to be exact with the community members on the extent of one's role at the initial stage of any intervention. Thus, National Society will increase the knowledge of communities and stakeholders involved in this crisis with appropriate briefings on the role and principles but also in the assistance and actions to be taken. This especially for direct cash assistance.

Link to further lessons learnt that informed the strategy can be found [here](#).

Overview of Red Cross Red Crescent Movement Actions in country

The IFRC maintains a country office in Freetown, providing technical assistance to the SLRCS with humanitarian operations related to disasters and crises caused by natural hazards; health services in hard-to-reach areas; longer-term resilience-building programmes; coordinating support by IFRC membership to SLRCS; enhancement of SLRCS organizational development; and representing SLRCS internationally. Through representation & coordination, the IFRC Country Delegation from the onset of the Response has been engaging ARCS leadership & supported the identification of SLRCS's areas of intervention, its roles, and responsibilities in its coordination with Red Cross Red Crescent (RCRC) Movement partners, UN agencies, national and international NGOs, and donors through networking and collaboration. In addition to IFRC, the British Red Cross and Finnish Red Cross are Movement partners with presence in Sierra Leone. Movement partners in-country continue to coordinate closely in line with existing Movement Coordination and Cooperation mechanisms anchored under a Movement Cooperation Agreement (MCA).

Given the limited financial means available at SLRCS, IFRC Country Delegation in Sierra Leone supported the preparation and submission of this DREF request to enable the National Society to respond to the 28 August Floods and Landslide. IFRC Country Office in Freetown will continue providing support to SLRCS throughout the implementation of the DREF.

Overview other actors' actions in country

Following the 28 August flash floods and landslides, an emergency interpillar meeting was held at the National Disaster Management Agency (NDMA) conference room on 29 August, to discuss preliminary findings with partners and agencies of the government and set up a rapid multisectoral assessment team to assess affected communities. The joint assessment team was commissioned by the Director General of NDMA including the Sierra Leone Red Cross and other humanitarian organizations.

The National Disaster Management Agency is providing the overall leadership for emergency planning and response. The agency has so far received support from several agencies with immediate response interventions including search and rescue, ambulance services, evacuations, emergency first aid, communication, psychosocial support, and rapid assessment. The matrix below summarizes support received from the different partners.

NDMA Actions since 28 August 2022	Partners
Emergency Response	Office of National Security (ONS), Environmental Protection Agency (EPA), CARITAS, Sierra Leone Police (SLP), Red Cross, Military, CRS, NFF, Freetown City Council, (FCC), and Ministry of Health and Sanitation (MOHS).
Field Assessments	World Vision, WFP, NCRA, Min of Social Welfare, Red Cross, Goal, Save the Children, Concern
Evacuations	Office of National Security (ONS), Environmental Protection Agency (EPA), CARITAS, Sierra Leone Police (SLP), Red Cross, Military, CRS, NFF, Freetown City Council, (FCC), and Ministry of Health and Sanitation (MOHS).
Interpillar Coordination	All partners

On the national relief stock levels, the Director of Relief and Response of NDMA has informed partners during the coordination meeting that the carried-over stock from the response to the Wellington Oil Tanker explosion has been exhausted by isolated incidences of fire and floods in different parts of the country. The regional stores provided by WFP in Makeni, Bo, and Kenema have been exhausted. The government has thus requested partners to consider the provision of both food and non-food items since the communities have lost almost everything they had to floods and landslides.

Sierra Leone Meteorological Department has issued warnings for heavy rain in several districts in the northern and Southern provinces in the next 3-4 weeks with extreme weather conditions including storms. Late rains have also been forecasted in Freetown, Makeni, Koinadugu, Bombali, and Bo Districts of Sierra Leone. The continuous rains in the Capital City of the Country and the fact that most populations affected by the 28 August flooding and landslides are currently staying in open places call for urgent efforts to address immediate humanitarian needs.

Needs analysis, targeting, scenario planning and risk assessment

Needs analysis

According to the report from NDMA report, a total of 18 communities were affected with 8 fatalities due to flash floods in low-lying communities, slope failure, and infrastructural collapse.

The findings from the assessment highlighted 1,817 households were affected across 18 communities. Basic needs of affected people including shelter and EHI, WASH, food, health, and psychosocial support have been identified during initial rapid assessments already conducted by SLRCS in collaboration with other disaster management actors. Displaced people lack shelter and basic household items, drinking water due to contamination of drinking water sources, consequently increasing the risk of water-borne diseases, and sanitation; food (rice, vegetable oil, salt, water, and others) is a priority need as the destruction of household assets and food reserves has affected food access and availability. Most of the affected persons are living in deplorable conditions. About 22% of people affected are currently living with host families who were also partially affected by the disaster, 19% are living in public buildings, 26% are sleeping in the open and 30% have nowhere to go and therefore stay in partially destroyed homes.

The assessment report also reveals damage to agricultural land in some communities and damage to local infrastructure is impacting people's livelihoods. Priority needs also include the provision of hygiene/dignity kits, healthcare, and educational support to children. Further rains and flash floods have continued to generate humanitarian needs in Freetown and other parts of the Country.

The impact of the disaster on household heads varies. According to the report, more female household heads at Kamayama, Tengbeh town, and Black Hall Road were affected, in Kroobay, 67% of the affected population are female heads of households, with also households affected in Wellington (60%), Colleh town (60%), and Culvert (58%) are headed by females. More men have been affected in Mount Auorel (80%), Looking town (71%), and Lumley (52%). The tables below provide a summary and details of affected persons across the affected communities.

SUMMARY						
28 August Flash Flood and Landslides Affected Persons						
# of affected persons	Male Headed Household		Female-Headed Household		Disable Headed Household	
12, 903 (1,817HH)	754 HH		968 HH		95 HH	
Level of impact of the flash floods and landslides on affected People						
# of people affected	# of households affected	# of people injured	# of people Missing	# of deaths		
12,903	1,817	79	4	8		
Categories of affected persons						
# of school children	# of Non-School Children	# of Pregnant Women/Girls	# of Lactating Mothers	# of Under 5 Boys	# of Under 5 Girls	Other
2,898	815	136	247	1,122	1,065	6,620

According to the National Disaster Management Agency records and some of the latest DRR reports available at the Sierra Leone Red Cross Society, 90% of these communities are on the hazard map as disaster-prone communities and some of the community members had received training in contingency planning, especially on early warning (EW). It is therefore realistic to mention that even though several houses, property, and livelihoods were destroyed instantly, the skills and knowledge acquired from such training minimized fatality from the landslide and flash floods.

Target

This proposed emergency plan of action targets an overall 11,688 people (1,644HH) in the 10 most affected communities, as agreed in coordination with the National Disaster Management Agency, considering the presence of other actors. However, given the different levels of impact and vulnerabilities of the targeted population (and limited resources), the approach will be tailored across the different sectors, as follows:

- Shelter and EHI (300HH or 2,100 people): prioritize 300HHs that have lost their houses (entirely) or families that have no support system (relatives, friends) and thus are leaving in inadequate shelters or at the open;
- Livelihoods and Basic Needs (750HH or 5,250 people): prioritize assistance to those households which breadwinners have lost livelihoods (temporarily or permanently);
- Health and WaSH (1,644 HH or 11,688 people): provide First Aid and PSS to households in need. Improve health and environmental health standards in targeted communities, and ensure access to safe water, hygiene and sanitation.
- Specific attention will be provided to pregnant and lactating women, through the provision of dignity kits.

In addition to the traditional sectors above, the intervention will provide up to 300 children of extremely vulnerable families, with education materials, in an attempt to avoid school dropouts on the aftermath of the disaster.

Beneficiary selection and verification will thus be done using selection criteria explained above, with attention to households that have lost their homes, women headed households, families with special needs including disabilities, the elderly, lactating mothers, pregnant women and children under five. These criteria could be revised as situation unfolds.

The community will be informed of the selection process through meetings with key stakeholders within the affected communities to outline the response options suggested by the Red Cross. This way, the communities will have a chance to express their views and confirm the operational strategy as well as to provide key information on needs as they evolve.

The table below summarizes population affected in the eighteen communities vs people to be directly supported by Sierra Leone Red Cross Society (Gray highlight).

TABLE SHOWING AFFECTED COMMUNITIES AND RESPECTIVE POPULATION					
S/N	COMMUNITIES	AFFECTED POPULATION		TARGET POPULATION	
		Households	Population	Households	Population
1	Culvert	797	5762	797	5762
2	Bottom Oku	20	137		
3	Kanikay	27	189		
4	Old Wharf	47	332		
5	Looking town, Kissy	32	222	32	222
6	Mount Auorel	39	275	39	275
7	Amadu Lane, Lumley	33	229	33	229
8	Jarret Drive, Regent Road, Lumley	17	119		
9	Kolleh town	111	777	111	777
10	CKG	14	101		
11	Assention town	17	118		
12	Tengbeh town	100	699	100	699
13	Kroobay	141	990	141	990
14	Kamayama	140	977	140	977
15	Hook Street Up Water	17	118		
16	Wellington/Black Hall Road	118	823	118	823
17	Cassava Farm	14	101		
18	Kaningo	133	934	133	934
	Total	1,817	12,903	1,644	11,688

Scenario planning

This emergency plan of action is based on the assessed current humanitarian situation of the flood affected population and families, their immediate needs as well as ensuring positive coping mechanisms for the most vulnerable, especially women, girls, children, the elderly and people with disabilities and special needs. The Sierra Leone Red Cross Society will continue to monitor the situation given the high predictability of further flooding in the region between in coming weeks, meaning this plan of action could be revised based on the caseloads and changing context. In an event of further displacements, there is the likelihood that this plan will be extended to cover an extended operational timeframe. SLRCS will ensure that all planned actions are aligned with national and state flood response and recovery framework of the National Disaster Management Agency and coordinated with other active partners responding to similar events in the country.

Best case scenario
The floods level does not cause further damage and remains as per initial assessment and no additional floods are registered. Rains do not cause further landslides / damages. No major outbreak of water borne/ vector borne diseases Planning hypothesis: Planning will be as per the strategies contained in this EPoA.
Most Likely scenario
The level of damage caused by the floods continues to increase and humanitarian situation deteriorates but not on a wide scale. This increases damages to infrastructures and houses. The flood affected population is safe on higher grounds and in safer areas until the flood waters recedes. Outbreaks of water borne, and vector borne diseases increase pressure to health facilities, this is reduced with temporary health facilities supporting the displaced population Planning hypothesis: SLRCS continues to assess and monitor the floods situation, providing critical life-saving assistance while seeking additional support to mitigate the disaster. A supplementary allocation could be sought to meet the increasing needs and the operation extended.
Worst case scenario
The flooding continues and spreads to other areas causing more damage and displacement. Situation worsens and rainfall continue for several weeks, further destroying livelihoods and placing more lives at stake. Displaced communities are affected by the floods and heavy rain, causing further displacement. Major outbreaks of vector-borne and water borne diseases, including cholera overwhelm the fragile health system Planning hypothesis: The NS continues to monitor the situation given the high predictability of further flooding in the country between August and September, meaning this plan of action would be revised based on the caseloads and changing context. This EPoA will be revised to widen the scale and scope of the operation with potential launching of an Emergency Appeal.

Operation Risk Assessment

Sierra Leone in 2022 has seen early flood incidents and with further expected rainfall intensity between August - September, there is high possibility of floods that would affect many communities in the country. These floods may pose many life-threatening situations, including the destruction of houses, livestock, and road networks as well as water and sanitation facilities.

Not communicating beneficiary selection criteria and distribution sites to beneficiaries will lead to high levels of community frustration and undermine the operations. To mitigate this risk, SLRCS will work with the affected communities to ensure that SLRCS reputation and trust with communities is protected from the outset.

In an unstable economy, possible changes in prices and supply chain due to the flooding would also impede the level and output of implementation. Furthermore, during the flood season, cholera, diarrhoea, and malaria cases increase within population living in flood-prone areas. This added to the fact that livestock diseases are prevalent, increasing the vulnerability of affected communities to infections, food insecurity and malnutrition, mostly among lactating women, children and the elderly. As a mitigation measure, NS will work on hygiene and sanitation campaigns to ensure that affected areas are cleaned up, reducing risks of disease outbreak.

B. Operational strategy

Overall Operational objective:

The overall objective of this EPoA is to provide immediate basic assistance to address the needs of 11,688 people (1,644 households) affected by floods in 10 neighbourhoods of the capital city of Sierra Leone, Freetown. This will be done by providing Shelter, Livelihood and Basic Needs, Health and WASH assistance in ten (10) communities: including Kroobay, Kamayama, Kanningo, Tengbeh town, Culvert, Wellington, Collen Town, Looking town, and Kanningo communities.

Proposed strategy

SLRCS, through the thematic core areas of focus, will ensure a coordinated response to the direst needs of the flood affected population, considering the different levels of vulnerability. Beyond the core areas of focus, the strategy will pay attention to the most exposed/at risk groups, hence including gender-sensitive and protection in all programming, psychosocial support, community engagement, and accountability to affected people.

The DREF operation will provide support in the following core sectors:

1. Shelter (Target 2100 people or 300 HH)

SLRCS intends to reach 300 most vulnerable households in the impacted areas who lost their houses and/or have no other means of finding appropriate and dignified shelter. The intervention will thus provide cash assistance that will allow to cater for house rental in a safer area for the period covered by this operation (4 months). According to the housing market, SLRCS estimates that SLL 400 will be adequate to rent a house for a household temporary shelter per month. Thus, each targeted household will be provided an amount of SLL 1,600 through cash-based assistance for 4 months temporary accommodation.

While providing this assistance, SLRCS will advocate with local authorities to find durable solutions for the affected households, whose return to the places of origin would expose them to further risks. Volunteers will also be trained in Build Back Safer construction techniques so that they can raise awareness among communities living in risk areas on safer construction techniques. The SLRCS will also advocate for immediate and longer-term measures to stabilize the still-dangerous slopes around the mudslide in the Looking Town area, through tree planting where appropriate, or through other means.

Post distribution monitoring exercise will be conducted by SLRCS volunteers three weeks after the distribution to determine the effectiveness of the cash-based assistance and how useful the support was for beneficiaries. Findings from the PDM will be used by SLRCS as a guide in future for shelter assistance.

2. Health and Care (Target 11,688 people or 1,644 HH)

The National Society will ensure that affected communities and households are able to preserve their health and wellbeing. It shall also ensure that good health and wash practices are upheld and improved with a view to reducing the occurrences of water and vector borne diseases such as Malaria and water borne diseases such as acute watery diarrhoea, as well as preventing any cholera outbreak. SLRCS will also provide first aid and psychosocial support to the affected families, as necessary. A total of 100 volunteers will be trained on PSS, CEA, First Aid, and health promotion.

Activities will include:

- Provide psychosocial support to affected families. Some 33 volunteers will provide PSS support to affected persons within their communities (3 per community) for the first month of the operation. A one-day training will be organised for volunteers involved in this activity.
- Refresher Training on First aid
- Procurement and Distribution of mosquito nets (3 per HH) to 1644 households
- Develop community environmental health activities (alongside other WaSH sensitization campaigns).
- Some 100 SLRCS volunteers from all 10 communities targeted will be deployed 3 days a week for 12 weeks to ensure community contributes to maintaining functioning drainage and waste management systems and overall awareness on health issues resulting from the floods. This will help to prevent and rapidly identify any eventual outbreaks.
- Conduct hygiene and sanitation campaign twice a month for 4 months (8 campaigns) to ensure communities, including their latrines are cleaned up from the debris resulting from the flood. This activity will be implemented by 100 volunteers (10 per community in all 10 target communities).

3. Water, Sanitation, and Hygiene (Target 11,688 people or 1,644 HH)

WASH activities for the targeted households will aim to improve access to safe water, access to improved hygiene activities and sanitation. The activities will include:

- Rehabilitation of 3 boreholes and 3 sanitary facilities in Culvert community.
- Rehabilitation 1 borehole and 1 sanitary facility in Kolleh community.
- Rehabilitation 1 borehole and 1 sanitary facility in Kroobay
- Procure and distribute aqua tabs, to purify over 5 million litres of water to be used by the target population for 30 days (as per Sphere standard, each person should have at least 15L of water per day)
- Provision of dignity/hygiene kit to 383 PLW
- Monitor treatment and storage of water through household surveys and quality tests.

SLRC visibility will be maintained through procurement of all items under HHIs, WASH, Health, visibility materials and protective clothing for 100 volunteers involved in this operation. Continued assessments and monitoring are also integrated in the operation to ensure that the operation is in line with the evolving situation on the ground.

4. Livelihoods & Basic Needs: (Target 5,250 people or 750 HH)

Homes, businesses, and livelihoods in the areas impacted by the floods have been destroyed and it is likely that affected families are amongst those that have lost (partially or totally) their dwellings and livelihoods and their source of income. As such, the intervention will provide two rounds of unconditional cash grants to 750 households that have lost any means of generating income, to support their basic needs. This will be based on the WFP food basket calculation in Sierra Leone for a month, which is pegged at 1,250 Sierra Leonean Leones (SLL)

Some 50 volunteers will be allocated to support cash activities. They will sensitize targeted families on the use of the cash following IFRC guidelines for medical assistance and basic needs, support them in accessing their cash grants as they are stationed at the Financial Service Provider (FSP) cashing points. Volunteers will also conduct post distribution monitoring for one day, a few weeks after the distribution.

Educational Materials (Target: 300 Children): The assessors identified 2,898 school children across the most hit communities who have lost almost everything and are now deprived of returning to school thus increasing their vulnerability to negative coping mechanisms and dropouts. The operation will provide 300 children of families that have no capacity to supply them with these materials with books, pencils, pens, rulers, school bags, erasers, pencil case and sharpeners.

Community Engagement and Accountability (CEA)

Community Engagement and Accountability (CEA) will be mainstreamed throughout the intervention to guarantee meaningful participation of the affected communities. An effective complaints and feedback mechanism will be set up to ensure community feedback is considered in the implementation of this EPoA. This will also help in the event the situation changes, to ensure that the community is listened to with regards to any change of strategy. Health promotion sessions will also be instrumental in collecting feedback and respond to community concerns. In addition, SLRCS will inform community members that they can use the Hotline service to ask questions, make complaints or provide feedback.

- Train volunteers in CEA
- Hold meetings with affected communities

Operational Support

Human Resources

One hundred (100) skilled volunteers will be deployed and insured through this operation, to serve in the various activities, as described under the Operational strategy. The NS DM coordination team will equally be heading the Red Cross response while IFRC Country office operation, logistics and finance units will provide support to ensure smooth implementation of activities.

An IFRC surge will be hired to support the implementation of this DREF operation and especially the cash process from the list registration and cash process and monitoring.

The surge Operations Coordinator will be providing closer support over the implementation and travel to Sierra Leone to guide and monitor specific list registration, cash process and implementation key steps.

This position will be also covering countrie(s) within the delegation that experienced challenges in past emergencies (operational, monitoring or reporting) such as Guinea and Sierra Leone operations. A rotative travel planning will be sent accordingly to ensure appropriate support to the monitoring and operational steps.

Logistics and Supply Chain: The procurement of items or the provision of services will meet the required conditions, according to the needs of the affected population (external client) and/or the operational areas (internal client), to ensure adequate supplies and optimal performance. All purchases with support of Freetown cluster will be made locally in the country, and the National Society procedures, regulations and guidelines will be applied for the procurement process, considering the regulations of the DREF procedures and those of the International Federation of Red Cross and Red Crescent Societies. SLRCS will ensure vehicles and ambulances already mobilised for assistance since 10 August are ready to support further intervention by keeping maintenance.

Security: The SLRCS will work within the framework of action of Safer Access, in addition to compliance with the provisions contained in the Sierra Leone Red Cross Security Manual, in accordance with the IFRC Freetown Cluster Delegations Minimum Security Requirement (MSRs) which must be applied by all components of the Red Cross Movement present in Sierra Leone, as well as all the management, employees and volunteers of the SLRCS.

The Regional Security Unit has been encouraging National Staff Volunteers to complete the New Stay Safe 2.0 Global Edition:

- Stay Safe 2.0 Global Edition: Level 1- Fundamentals: <https://ifrc.csod.com/ui/lms-learning-details/app/curriculum/fd082aef-a477-427b-9ace-8c5f2a13b935>
- Stay Safe 2.0 Global Edition: Level 2- Personal and Volunteer Security in Emergencies: <https://ifrc.csod.com/ui/lms-learning-details/app/curriculum/a88a5612-4347-447b-95b1-2dbb468d987c>
- Stay Safe 2.0 Global Edition: Level 3- Security for Managers: <https://ifrc.csod.com/ui/lms-learning-details/app/curriculum/c38f447b-3655-4867-b2bc-695f5f8c4b9e>

Regular briefings and update will be maintained to keep the whole team informed and aware.

Administration and Finance

The IFRC, through its finance unit in-country will oversee and regulate the financial aspect of the operation. They will provide the necessary operational support for review, validation of budgets and carry out all expenditure review and reporting.

Planning, Monitoring, Evaluation and Reporting

Reporting on the operation will be done in accordance with the IFRC minimum reporting standards, with an update after the first month and a final report to be made available three months after the end of the operation timeframe.

SLRCS will oversee all operational, implementation, monitoring and evaluation, and reporting (PMER) aspects of the operation in the flood affected communities. The day-to-day monitoring of the operation will be the responsibility of the PMER Unit to ensure appropriate accountability, transparency and financial management of the operation. Regular monitoring of the planned activities will be carried out by the operation team while scheduled monitoring visits will be made jointly by IFRC/SLRCS teams.

At the end of the operation, a lesson learnt workshop will be organized by SLRCS with IFRC and other stakeholders of this operation to reflect on implementation. This workshop will allow for informed planning in future operations planned and implemented by the NS, but also will allow the SLRCS to reflect on its disaster readiness status, given that the country and specifically this region, is prone to flooding

C. Detailed Operational Plan



Shelter and Household items

People targeted: 2,100

Male: 1,029

Female: 1,071

Requirements (CHF): 52,133

Population to be assisted: This EPoA targets 300 households or 2,100 people that have their houses destroyed to the landslide and floods

Programme standards/benchmarks: Activities under this section will seek to meet Sphere standards

P&B Code of the Product	Shelter 1 outcome: Affected communities and crisis-affected areas restore and strengthen their safety, well-being, and long-term recovery by addressing shelter and habitat issues	% of community reached with cash that report that they were satisfied with the cash distribution (80%)															
	Shelter Output 1.1: Affected households receive short-, medium- and long-term shelter and habitat assistance	<ul style="list-style-type: none"> # of households who received shelter assistance in terms of cash (Target: 300 HH) # of PDM conducted (Target: 1 PDM) 															
	Planned activities Week	1	2	3	4	5	6	7	8	9	10	11	12	13	14	15	16
AP005	Beneficiary verification and validation (20 volunteers x 2 days)																
AP005	Support beneficiaries with local market analysis to identify availability/access to shelters																
AP005	Establishment of targeting committees and briefing of beneficiary households.																
AP005	Transfer of funds to 300 households as rental assistance equivalent to 4 months of rental																
AP005	Advocacy with authorities to seek for longer term solutions for the displaced																
AP005	Training of 50 volunteers on build back better techniques																
AP005	10 community sessions on build back better techniques																
AP005	Post-distribution follow-up (PDM) 3 days by 20 volunteers																



Livelihoods and basic needs

People targeted: 5,250

Male: 2,450

Female: 2,800

Requirements (CHF): 162,426

Population to be assisted: 5,250 people (750HHs) in ten communities including Kamayama, Tengbeh town, Kaningo, Kroobay, Wellington Colleh town, Culvert Mount Auorel, Looking town and Lumley

Programme standards/benchmarks: Livelihood support will be based on the WFP food basket in Sierra Leone

P&B Output Code	Livelihoods and basic needs Outcome 1: Communities, especially in disaster and crisis affected areas, restore and strengthen their livelihoods	<ul style="list-style-type: none"> • % of affected population confirming that cash provided has support their medical and basic needs Target: 80 % • # of household receiving unconditional cash assistance (Target 750) 															
		<ul style="list-style-type: none"> • # of affected HHs provided with cash to recover their livelihoods Target: 750 • number of volunteers trained and engaged in cash activities (Target: 50 volunteers) • # of PDM conducted; Target: 1 															
	Activities planned Month	1	2	3	4	5	6	7	8	9	10	11	12	13	14	15	16
AP081	Identification of caseloads, verification and validation of household beneficiaries (those HHs that have lost entirely their income generation)	■	■	■													
AP081	Conduct Information session for 50 volunteers to be engaged in cash distribution	■	■	■													
AP081	Deployment of 50 volunteers to sensitize targeted families on the details of Mobile money transactions	■	■	■	■												
AP081	Unconditional cash transfer of funds to 750 households			■	■	■	■										
AP081	Conduct post distribution monitoring (PDM) for 3 days after cash disbursement					■	■										
AP081	Provide support in the form of educational Materials (12 exercise bks per child, 6pencils, 6pens, 2 rulers, 1 school bag, 3 erasers, pencil case, sharpener) to 300 school children affected by the disaster					■	■										



Health

People targeted: 11,688

Male: 5,727

Female: 5,961

Requirements (CHF): 59,810

Population to be assisted: 11,688 (1,644 HHs) people affected in 10 communities from the August 28 landslide and flooding

Programme standards/benchmarks: MoH and WHO standards.

P&B Output Code	Health Outcome 2: The immediate risks to the health of the affected populations are reduced through improved access to medical treatment	# of households reached with immediate health support (Target: 750 households or 5,250 people)															
	Health Output 2.1: Improved access to health care and emergency health care for the targeted population and communities.	<ul style="list-style-type: none"> # of volunteers deployed for search and rescue (Target: 33 volunteers) # Volunteers trained (100) 															
	Activities planned Week	1	2	3	4	5	6	7	8	9	10	11	12	13	14	15	16
AP022	Deployment of volunteers for search and rescue (ongoing)																
AP022	Mobilized 33 volunteers for first aid (ongoing)																
AP022	Procure and prepositioning of 100 First Aid kits to the Western Area Branch																
AP022	Provide refresher training on first aid to 100 volunteers (ongoing)																
AP022	Procurement and Distribution of insecticide-treated nets (3 per household)																
AP022	Training of volunteers in environmental and community health promotion																
AP022	Mobilization and deployment of 100 volunteers for environmental health and health promotion (3 days a week for 16 weeks)																
P&B Output Code	Health Outcome 6: The psychosocial impacts of the emergency are lessened	% of people affected by the disaster reached with psychosocial support.															
	Health Output 6.1: Psychosocial support provided to the target population as well as to RCRC volunteers and staff	<ul style="list-style-type: none"> # of volunteers trained in PSS (Target: 100 volunteers) # of PSS sessions conducted (Target: 12 sessions) # of volunteers and staff provided with PSS support 120 # of vulnerable children provided with education materials (Target: 300) 															
	Activities planned Week	1	2	3	4	5	6	7	8	9	10	11	12	13	14	15	16
AP023	Refresher training for 100 volunteers in psychosocial support																

AP023	Provide PSS support to targeted households 3 days a week for 4 weeks																		
AP023	Provide PSS to staff and volunteers																		



Water, Sanitation and Hygiene

People targeted: 11,688

Male: 5,727

Female: 5,961

Requirements (CHF): 59,364

P&B Product Code	WASH Result 1: Immediate reduction of waterborne disease risks in targeted communities	# of people reached with key messages on environmental sanitation and cleaning of drainages (Target: 11,688 people)															
	WASH 1.2: Daily access to drinking water in quantity and quality and meeting Sphere and WHO standards is ensured for the target population	# of households provided with access to safe drinking water (Target: 1,644 households)															
	Planned activities Week	1	2	3	4	5	6	7	8	9	10	11	12	13	14	15	16
AP026	Provide training to the population of the target communities on the storage of drinking water, healthy use of water treatment products)																
AP026	Rehabilitation of 5 boreholes in in Culvert, Koleh community, Kroobay communities																
AP026	Procurement and distribution water treatment aquatabs																
AP026	Monitor water quality through testing of water sources																
P&B Product Code	WASH Product 1.3: Adequate sanitation that meets Sphere standards in terms of quantity and quality is ensured for the target population.	<ul style="list-style-type: none"> # of latrines rehabilitated (Target: 5 latrines) # of women and girls provided with dignity kits (Target: 383) 															
		Planned activities Week	1	2	3	4	5	6	7	8	9	10	11	12	13	14	15
AP028	Disinfection/rehabilitation of 5 communal latrines in Culvert, Koleh community, Kroobay communities																
AP028	Procure and distribute 383 Dignity/hygiene kits for women and girls, sufficient for 1 month.																
AP028	Support the environmental health awareness sessions, through working with communities to maintain drainage and waste management systems																

Strategies for Implementation

Requirements (CHF): 48,604

P&B Output Code	S1.1: National Society capacity building and organizational development objectives are facilitated to ensure that National Societies have the necessary legal, ethical and financial foundations, systems and structures, competences and capacities to plan and implement	<ul style="list-style-type: none"> # of volunteers and employees with appropriate visibility items (Target: 100) # of volunteers involved in the operations insured (Target: 100) # of security briefing provided to volunteers and staff (Target: 01) 															
		Output S1.1.4: National Societies have effective and motivated volunteers who are protected															
	Activities planned Week	1	2	3	4	5	6	7	8	9	10	11	12	13	14	15	16
AP040	Provide complete briefings on volunteers' roles and the risks they face with regular security briefings and update through phones and meetings																
AP040	Ensure volunteers involved in the operation are insured																
AP040	Ensure volunteers are aware of their rights and responsibilities																
AP040	Ensure volunteers' safety and wellbeing																
AP040	Ensure volunteers are properly trained																
AP040	Personal protective equipment and visibility for volunteers and staff																
P&B Output Code	Outcome S2.1: Effective and coordinated international disaster response is ensured	<ul style="list-style-type: none"> # of surge deployed to support the intervention (Target: 01) 															
		Output S2.1.1: Effective and respected surge capacity mechanism is maintained.															
	Activities planned Week	1	2	3	4	5	6	7	8	9	10	11	12	13	14	15	16
AP046	Surge deployment operations coordinator to support the cash and monitoring																
P&B Output Code	Outcome S2.1: Effective and coordinated international disaster response is ensured	<ul style="list-style-type: none"> # of monitoring missions conducted by IFRC (Target: 4) # of briefings provided to staff on CEA and protection (Target: 1) 															
		Output S2.1.3: National Society compliance with Principles and Rules for Humanitarian Assistance is improved															
	Activities planned Week	1	2	3	4	5	6	7	8	9	10	11	12	13	14	15	16
AP049	IFRC Monitoring visit to provide technical support to the NS.																
AP049	Ensure regular security briefing for IFRC staff																

AP084	Briefing on CEA and protection																
AP084	Ensure method are put in place to engage the communities during this response from targeting to the response																
AP084	Community feedback systems (including rumour and/or perception tracking) are established, and feedback acted upon and used to improve the operation																
AP046	DREF lessons learned workshop																

Funding Requirements

The total amount allocated for implementation of above activities is CHF 382,337 as detailed in below budget.

International Federation of Red Cross and Red Crescent Societies

all amounts in Swiss
Francs (CHF)

DREF OPERATION

MDRSL013 - SIERRA LEONE - FLASH FLOODS AND MUDSLIDES

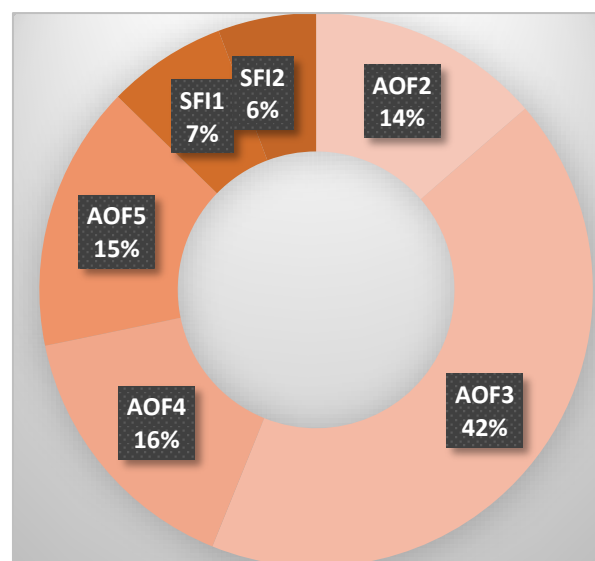
11/09/2022

Budget by Resource

Budget Group	Budget
Clothing & Textiles	13,810
Water, Sanitation & Hygiene	31,605
Medical & First Aid	15,750
Teaching Materials	12,600
Other Supplies & Services	18,186
Cash Disbursement	166,499
Relief items, Construction, Supplies	258,449
Land & Buildings	5,250
Land, vehicles & equipment	5,250
International Staff	16,000
National Staff	1,785
National Society Staff	1,260
Volunteers	28,000
Personnel	47,045
Workshops & Training	17,290
Workshops & Training	17,290
Information & Public Relations	7,000
Financial Charges	1,568
Other General Expenses	22,400
General Expenditure	30,968
DIRECT COSTS	359,002
INDIRECT COSTS	23,335
TOTAL BUDGET	382,337

Budget by Area of Intervention

AOF2 Shelter	52,133
AOF3 Livelihoods and Basic Needs	162,426
AOF4 Health	59,810
AOF5 Water, Sanitation and Hygiene	59,364
SFI1 Strengthen National Societies	26,689
SFI2 Effective International Disaster Management	21,916
TOTAL	382,337



Contact information

Reference documents



Click here for:

- Previous Appeals and updates
- Emergency Plan of Action (EPoA)

For further information, specifically related to this operation please contact:

In the Sierra Leone National Society:

- Kpawuru Sandy, Secretary General; phone: +232 76 800 073; email: ksandy@sierraleoneredcross.org
- Yusufu Camara, Director of Programs and Operations
ycamara@sierraleoneredcross.org, +232 79 492 611

IFRC Country Cluster Delegation:

- Ghulam Muhammad Awan Head of Country Cluster Delegation, email: ghulam.awan@ifrc.org; phone: +232 78 811 584
- John K. Gbao, Senior Operations Officer, email: john.gbao@ifrc.org; phone: +232 79 102 910

IFRC office for Africa Region:

- Rui Alberto Oliveira, Head of Disaster Crisis Prevention, Response and Recovery Department a.i, Nairobi, Kenya; email: rui.oliveira@ifrc.org

In IFRC Geneva

- Operation manager, Richard CASAGRANDE, Senior Officer, DCPRR unit Geneva; email: Richard.CASAGRANDE@ifrc.org
- DREF: Nicolas Boyrie, DREF Lead, email: nicolas.boyrie@ifrc.org
- DREF: Eszter Matyeka, DREF Senior Officer, DCPRR Unit Geneva; Email: eszter.matyeka@ifrc.org

For IFRC Resource Mobilization and Pledges support:

- IFRC Africa Regional Office for Resource Mobilization and Pledge: Louise Daintrey, Head of Unit, Partnership and Resource Development, Nairobi, email: louise.daintrey@ifrc.org;

For In-Kind donations and Mobilization table support:

- **IFRC Africa Regional Office for Logistics Unit:** Rishi Ramrakha, Head of Africa Regional Logistics Unit, email: rishi.ramrakha@ifrc.org; phone: +254 733 888 022

For Performance and Accountability support (planning, monitoring, evaluation, and reporting enquiries)

- IFRC Africa Regional Office: Philip Komo Kahuho, PMER Coordinator, email: philip.kahuho@ifrc.org; phone: +254 732 203 081

How we work

All IFRC assistance seeks to adhere to the **Code of Conduct** for the International Red Cross and Red Crescent Movement and Non-Governmental Organizations (NGO's) in Disaster Relief and the **Humanitarian Charter and Minimum Standards in Humanitarian Response (Sphere)** in delivering assistance to the most vulnerable. The IFRC's vision is to inspire, encourage, facilitate and promote at all times all forms of humanitarian activities by National Societies, with a view to preventing and alleviating human suffering, and thereby contributing to the maintenance and promotion of human dignity and peace in the world.

The IFRC's work is guided by Strategy 2020 which puts forward three strategic aims:



Save lives.
protect livelihoods,
and strengthen recovery
from disaster and crises.



Enable **healthy**
and **safe** living.



Promote social inclusion
and a culture of
non-violence and **peace**.