



ARCS volunteers are doing their best to ensure that no affected household is left behind. (Photo: Meer Abdulla, IFRC)

Emergency appeal No: MDRAF007 Emergency appeal launched: 10/04/2021 Emergency appeal revised: 23/06/2022 ¹ Operational Strategy published: 24/06/2022	Glide No: EQ-2022-000232-AFG
Operation update #1 Date of issue: 19 September 2022	Timeframe covered by this update: From 22 June 2022 to 31 July 2022
Operation timeframe: 18 months (24/06/2022 - 31/12/2023)	Number of people being assisted: 70,000
Funding requirements (CHF): CHF 10 million out of 90 million through the IFRC Emergency Appeal ²	DREF amount initially allocated: CHF 750,000

Following the 5.9 magnitude earthquake that hit the southeast region of Afghanistan, IFRC Secretariat revised its Emergency Appeal, increased its funding ask from CHF80 million to CHF 90 million and extended the operation's timeframe until 31 December 2023. The increase in funding requirements is to enable IFRC to scale up humanitarian assistance as well as to

¹ Revised Emergency Appeal No. 4 issued, increasing the total funding requirement by CHF 10,000,000 in response to the earthquake and the DREF allocation of CHF 750,000.

² Part of CHF 210 million Federation-wide funding requirements for Afghanistan until 2023 which includes IFRC Secretariat's Operational Plan for 2022 and 2023, ARCS own funding for 2022 and 2023 and funding by Participating National Societies working bilaterally in Afghanistan

implement interventions that bridge development. It also extends the operation's geographical coverage from 19 to all 34 provinces of the country and increases the target to 1 million people. The revision of the Emergency Appeal contains two operational strategies: Earthquake in Paktika and Khost seeking CHF 10 million, and the Wider Humanitarian Crises seeking CHF 80 million. To date, the earthquake Operational Strategy is 88 per cent funded. Further funding contributions are needed to enable the Afghanistan Red Crescent Society (ARCS), with the support of the IFRC, to continue providing humanitarian assistance and protection to people affected by the earthquake.

A. SITUATION ANALYSIS

Description of the crisis

On 22 June 2022, a 5.9 magnitude earthquake hit the southeast region of Afghanistan, with its epicentre in the province of Paktika. The earthquake, which also impacted Khost province, was felt throughout Afghanistan and parts of Pakistan. The earthquake struck at 1.30 a.m local time when most people were asleep, and livestock was indoors. Based on initial reports, it is estimated that at least 1,000 people were killed and more than 1,500 injured. Deaths were mostly caused by collapsed structures, with secondary data analysis and earthquake intensity mapping indicating that around 70 per cent of houses in areas affected by high-intensity shock are either damaged or destroyed. Barmal, Giyan, Nika, and Ziruk districts of Paktika Province as well as Shamal and Spera districts of Khost province are the most impacted districts.

The situation during the first day was compounded by continuous rains which hampered search and rescue efforts as well as heightened the risk of secondary disasters such as mudslides, landslides, and flooding. Weather conditions also slowed down the initial deployment of relief items as air transportation was delayed, prompting transportation of relief supplies by land. Rains eased on 23 June morning and since then temperatures have soared, leaving affected households exposed to possible heatwaves. Several aftershocks have been experienced during the week following the quake and have further affected people as well as the safety of buildings.

The quake struck as the whole of Afghanistan is reeling from the impacts of decades of conflict, protracted severe drought, effects of other intense climate-related disasters, extreme economic hardship, a battered health system, and system-wide gaps. The impacts of the earthquake in the two most affected provinces add another layer to an already dire humanitarian situation.

Based on initial assessments by a multisector team – comprising personnel of ARCS, the IFRC, Danish Red Cross, Norwegian Red Cross, and Turkish Red Crescent – immediate needs include **food assistance, cash assistance, emergency shelter, non-food items (NFIs), emergency health, mental health and psychosocial support (MHPSS), emergency water, sanitation and hygiene (WASH) support, and addressing protection needs** of children who have been orphaned and women who have been widowed. Medium-term needs are projected to include support for shelter repair and rebuilding, livelihoods recovery and supporting rehabilitation or equipment of education and health facilities.

Summary of response

Overview of the host National Society and ongoing response

ARCS has a presence and local networks across Afghanistan which are exceptionally well-established, including in Khost, Paktika, and Paktya provinces. ARCS staff and volunteers were among the first responders – alongside community members, local authorities, and other agencies with a presence in affected areas – delivering assistance. ARCS mobilized members of its Branch Disaster Response Teams (BDRT) for the response in the affected provinces together with 100 community-based volunteers. ARCS staff and volunteers were deployed promptly to support rescue

efforts, provide first aid to the injured and distribute immediate relief supplies to affected people alongside supporting initial assessments.

At the onset of the Response, a DREF allocation of CHF 750,00 was approved on 22 June 2022 to support ARCS in needs assessments and mounting the immediate response, and on 23 June 2022, IFRC revised the Afghanistan Humanitarian Crises Emergency Appeal to CHF 90 million, with CHF 10 million specifically for the earthquake response through the provision of NFIs, winter clothing, emergency shelter, and psychosocial support services. It also covered support for mobilizing BDRT, staff, and volunteers for assessments, distributions, and monitoring.

On 22 June 2022, ARCS headquarters and regional offices, IFRC Secretariat, and Participating National Societies (PNS) in-country deployed a joint team to support initial assessments and the immediate response. The Rapid assessment carried out by the Red Cross Red Crescent (RCRC) multi-sectorial team involved in the response including ARCS, IFRC, Danish Red Cross, Norwegian Red Cross, and Turkish Red Crescent identified food assistance, cash and voucher assistance (CVA), emergency shelter, and NFIs as immediate needs of the affected population. Emergency health; MHPSS; emergency WASH support, and addressing the protection needs of children who have been orphaned and women who have been widowed are also among the immediate needs identified. Shelter support: repair and rebuilding, livelihoods recovery, and supporting rehabilitation as well as equipment for education, health, and WASH facilities form part of the medium-term needs identified

ARCS has heightened its response efforts in the earthquake-affected districts during the reporting period. As of 31 July 2022, some 5,292 families have been provided with cash assistance, with each family receiving AFN 13,000 (approximately CHF 140). Also, 2,598 families have been provided food parcels to reduce the impact of the quake with support from the German Peace Society, Iranian Red Crescent Society, and Turkish Red Crescent. To address immediate health needs, ARCS has also redirected various of its health teams – that were operational before the earthquake – to the affected areas. These comprised six mobile health teams (MHTs) in Paktika, six sub-health centres (SHCs) in Khost, and one basic healthcare centre (BHC) in Khost. As of 31 July 2022, some 10,000 people have already received support from the MHTs in affected districts. Since major markets were disrupted in the first weeks after the earthquake, and against the backdrop that households whose homes collapsed lost essential household items, 2,500 households have been provided non-food relief items including 6,918 blankets, 138 household kits, 1,740 kitchen sets, 1,157 sleeping mats, and 600 solar lamps.

Additionally, the distribution of 540 tarpaulins, 1,488 tents, 616 beds, 400 carpets, 400 mattresses with pillows, and 1,722 plastic sheets has been completed. Addressing the WASH needs of the affected population, ARCS has distributed 1,280 jerry cans – for safe water storage – and 200 hygiene kits to affected households. In addition, six water trucks have been mobilized and are distributing 40,000 litres of safe water per day to affected households in ten villages. Additionally, 20 water tanks of 5,000-litre capacity each have been installed in strategic locations of the ten villages to ensure that community members can collect water when they need it.

Needs analysis

Needs analysis

ARCS together with movement partners including IFRC, Danish Red Cross, Norwegian Red Cross, and Turkish Red Crescent conducted rapid needs assessments alongside emergency and relief interventions in all affected provinces and districts amidst access and security challenges. The assessments were conducted in close coordination with ANDMA. The needs in affected areas were determined based on ARCS assessment reports, secondary data, situation reports by OCHA, and media reports which helped in the analysis of needs as below:

Emergency shelter: Considering the significant impact on shelter, with homes of 13,000 households severely damaged or destroyed and those of 48,000 households suffering minor or moderate damages, emergency shelter assistance and support for rebuilding are the top priority. Since the earthquake struck less than six months before another winter when the capacity of households to cope is already stretched and significantly constrained because

of the wider pre-existing humanitarian crises – support for repair and rebuilding interventions needs to be done alongside emergency and relief assistance. Guidance and technical support in the rebuilding of partially and fully constructed houses, and the provision of Shelter items including tarpaulins, tents, beds, carpets, mattresses with pillows, and plastic sheets were identified as part of household shelter needs of the affected population.



ARCS, supported by its partners, undertakes household surveys to identify priority shelter needs. (Photo: Meer Abdulla, IFRC)

Food: Food items were also identified as an immediate need as the destruction of household assets and food reserves, coupled with some stocks being buried with the destruction of houses have affected food access and availability.

Non-food relief (including hygiene supplies): Supplies of essential household items were needed in the short term to allow people to meet immediate needs. Many lost their homes and needed replacement goods while they awaited more permanent shelter solutions. The normal supply chain of some goods was disrupted and with the approaching winter, the supply routes were expected to be blocked. It was recommended that essential relief in-kind items, including hygiene supplies, are provided in the most affected communities.

Winter clothing: In view of the approaching winter, there is a need to provide displaced people with winter clothing. Inadequate clothing exposed people to the elements which could in turn increase health risks, including acute respiratory infections, especially in children.

MHPSS: In addition to killing more than 1,000 people, the earthquake left more than 2,900 people injured. It also caused severe mental anguish, including to people with underlying psychosocial issues. There was a need to provide psychosocial support, especially for children in the most affected communities.

WASH: The earthquake caused damage to primary water sources including wells and springs. Furthermore, households whose homes collapsed lost water storage containers and hygiene supplies. There was a need for the provision of safe drinking water sources and HH items such as jerry cans for safe water storage, and hygiene kits. Assessments point to the need for sustaining interventions focusing on preventing outbreaks of preventable diseases

including acute watery diarrhoea (AWD) and measles. There is therefore a need for risk communication and community engagement (RCCE) on AWD and other diseases.

CVA: There was a need to provide affected families with cash, allowing them to prioritize and choose what they need. Cash transfers make people in need less likely to resort to harmful coping strategies, such as survival sex, child labour, family separation, among others.

Operational risk assessment

Afghanistan's context is complex and challenging, especially in the region affected by the earthquake. The risk assessment for this operation presents the following cases:

- Perception issues related to the conduct of the operation or activities that may impact the access and acceptance of ARCS.
- Risks associated with community-based cash and/or in-kind distribution activities.
- COVID-19's impact on physical health and business continuity was also identified as a risk.
- Extreme winter conditions hinder and delay access and/or distributions.
- Risks associated with displacement of unexploded ordnance.
- Topography and security access constraints in quake-affected areas result in significant response challenges.

ARCS with support from the IFRC Operations team are closely monitoring identified risks and will adopt mitigation measures as outlined in the approved Operational Strategy.

B. OPERATIONAL STRATEGY

Update on the strategy

Overall Operational objective

The strategy of the IFRC's supported response will be to contribute to improving food security, strengthening livelihood strategies, and building resilience in communities affected by the earthquake.


Proposed strategy

- **Integrated assistance:** The operation utilizes an integrated approach to meet the needs of the population. The provinces impacted by the earthquake (Paktika and Khost) will be targeted to be reached with shelter support – both emergency and recovery shelter support, emergency food, as well as household needs be it in-kind or cash. This will include food assistance and support for livelihoods through actions such as greenhouses and drought-resistant agriculture. Support for household needs is addressed through in-kind assistance such as household kits and winterization kits as well as through multipurpose cash
- **Health and care including WASH:** Health services are provided for areas that have health service gaps focusing on emergency and primary health care services including immunization; community health, and first aid programming that will enhance the community's capacity for health support which will also include community-based surveillance. Water and sanitation facilities – especially for areas affected by the earthquake (Paktika); schools and communities surrounding it will also be constructed. Health promotion activities are included in all these actions with inclusion in all aspects of health priorities such as vaccine-preventable diseases and COVID-19. In provinces impacted by the earthquake, rehabilitation and equipment of health facilities will be supported.

- **Protection and prevention** The operation will streamline protection, gender, and inclusion as well as community engagement and accountability in all the activities in all sectors. The operation will ensure social inclusion and ensure all layers of the community will be able to receive support as needed. This includes actions such as supporting marastoons³ as well as single-parent households in addressing their livelihoods needs. Climate adaptation is being incorporated to reduce the vulnerability of the communities together with the inclusion of risk reduction activities. Recovery programming is also included in all sectors.

C. DETAILED OPERATIONAL REPORT

STRATEGIC SECTORS OF INTERVENTION

	Shelter, Housing and Settlements	Female	9,274
		Male	8,922

Objective:	<i>Communities in disaster and crisis affected areas restore and strengthen their safety, wellbeing and longer-term recovery through shelter and settlement solutions</i>		
-------------------	---	--	--

	Indicator	Actual	Target
Key indicators:	<i># of volunteers recruited and trained to support Shelter intervention</i>	0	60
	<i># of households receiving household kits</i>	2,598	2,500
	<i># of damaged houses repaired</i>	Ongoing	2,030
	<i># of provinces targeted with awareness-raising activities</i>	0	2
	<i># of winterization kits procured for ready distribution</i>	Ongoing	25,000

Distribution of Shelter materials to affected HHs: To address immediate-term shelter needs, ARCS during the reporting period distributed 540 tarpaulins, 1,488 tents, 616 beds, 400 carpets, 400 mattresses with pillows, 3,750 blankets, 1,157 Sleeping Mat, 1,722 plastic sheets and 600 Solar lights. Items distributed were donated by Japan International Cooperation Agency (JICA), the Chinese Government, Human Aid, Iran Government, India Government, and Pakistan Government. The provision of these items was against the backdrop of the significant impact on shelter, with homes of 13,000 households severely damaged or destroyed and 48,000 households suffering minor or moderate damages

Winter readiness: During the reporting period, IFRC and ARCS have developed a robust plan to ensure that its preparedness stocks, which were released for immediate distribution, are replenished while winter readiness measures advance. In this regard, during July the IFRC Secretariat developed a winterization plan and placed an order for winter readiness items including 10,000 high thermal blankets, 15,000 medium thermal blankets, and 15,000 water storage containers. The items are expected to arrive in warehouses by the end of September 2022.

³ These places offer temporary shelter for vulnerable people.



ARCS, with the support of IFRC, distributes NFI donated by JICA. (Photo: Meer Abdulla, IFRC)



Livelihoods

Female	9,274
Male	8,922

Objective: Communities, especially in disaster and crisis affected areas, restore and strengthen their livelihoods

Key indicators:	Indicator	Actual	Target
	# of earthquake-affected households assisted through emergency food security and livelihood restoration activities	2,598	2,500
	# of earthquake-affected households who receive adequate food in a timely manner	2,598	2,500
	# of provinces engaged with community engagement and sensitization activities	2	2
	# of market assessments conducted	1	1
	# of post-distribution monitoring activities conducted	1	0

Food assistance: ARCS has provided 2,598 food parcels, 2,128 Bottle Oil, 1,150 dates, and 783 cartoon biscuits among other food items to affected households based on gaps identified in coordination with the Food Security and Agriculture Cluster (FSAC). Support to the affected households was donated by the German Peace Society, Iranian Red Crescent Society, Turkish Red Crescent, Chinese Government, Human Aid, and Iran Red Cross. More details are as shown in the following table:

No.	Item	Quantity
1	Bottle Oil	2,128
2	Rice parcel	2,028
3	Cartoon Beans	738
4	Cartoon Biscuit	600
5	Dates	1,150
6	Flour parcel	2,028
7	Food parcel	2,598
8	Packet Sugar	138

Non-food relief items: ARCS during the reporting period distributed 1,740 relief items to affected households from its preparedness stocks, and donations by various partners including the Embassy of China, ICRC, German Red Cross, and Japan International Cooperation Agency (JICA).



Multi-purpose Cash

Male	18,149
Female	18,888

Objective: Households are provided with unconditional/multipurpose cash grants to address their basic needs

Key indicators:	Indicator	Actual	Target
	# of households who received cash to support their livelihoods	5,291	5000
	# of post-distribution monitoring activities conducted	1	0

CVA: ARCS has completed two cash distributions during the reporting period. The first batch of cash distribution was completed on 30 June 2022 for 770 households in Giyan district of Paktika through financial and technical support from the IFRC Secretariat. In July 2022, additional 4,521 households (1,614 in Spera, 1,710 in Barmal, and 1,197 in Gayan) have been reached with CVA. Each household received AFN 13,000 (approximately CHF 140). This brings the total number provided with cash assistance, since the start of the response operation, to 5,291 households. The amount provided per household is considered the minimum cash-based food basket recommended by the Food Security and Agriculture Cluster (FSAC). Cash assistance has been provided through the financial and technical support of the IFRC Secretariat.



Health & Care

(Mental Health and psychosocial support / Community Health / Medical Services)

Female:	5,603
Male:	4621

Objective: Strengthening holistic individual and community health of the population impacted through community level interventions and health system strengthening

Key indicators:	Indicator	Actual	Target
-----------------	-----------	--------	--------

# of volunteers trained in PFA in the targeted areas	0	60
Communities are supported by NS to effectively respond to health and psychosocial needs during an emergency.	Ongoing	Yes
# of MHTs deployed.	6	6
# of targeted people reached with MHTs	10,225	TBC
# of volunteers trained and mobilized to conduct awareness-raising campaigns	0	60
# of households reached with key messages to promote personal and community hygiene	0	2,030

Emergency health and MHPSS: In addition to killing more than 1,000 people, the earthquake left more than 2,900 people injured. It also caused severe mental anguish, including to people with underlying psychosocial issues. To address immediate health needs, ARCS redirected various of its health teams – that were operational before the earthquake – to the affected areas. These comprised six MHTs in Paktika, six sub-health centres (SHCs) in Khost, and one basic healthcare centre (BHC) in Khost. The health teams are supported financially by the IFRC Secretariat and Norwegian Red Cross. Data on the collective number of people reached by these facilities are currently being collated. During the reporting period, the two MHTs operational in Paktika reached 10,225 people.



ARCS, supporting routine immunization and outpatient services through Mobile Health Teams (Photo: ARCS)

Distribution of medical kits: ARCS during the reporting period distributed a total of 596 units of medical kits⁴, out of which 500 medical kits were donated by Chinese Government and 96 medical kits were distributed with the financial support of IFRC. Based on an initial analysis, needs to be addressed will cover emergency health, MHPSS, and rehabilitation or equipment of health facilities.

⁴ Each kit contains medicinal products (48 items), and consumable supplies (11 items)

Looking forward: To meet the MHPSS needs, ARCS mobilized trained practitioners from other branches to initiate the provision of psychological first aid. Training of volunteers on MHPSS is underway while planning for child-friendly spaces has advanced. MHPSS activities will be progressing in earnest starting August with the technical guidance of Danish Red Cross and financial support of the IFRC Secretariat.



Water, Sanitation, and Hygiene

Male	4,400
Female	4,581

Objective: *Ensure safe drinking water, proper sanitation, and adequate hygiene awareness of the communities during relief and recovery phases of the Emergency Operation, through community and organizational interventions*

Key indicators:	Indicator	Actual	Target
	<i>% of targeted population have access to clean water, sanitation and with increased knowledge of personal hygiene according to Sphere standards</i>	Ongoing	50
	<i># of provinces with assessments conducted</i>	2	2
	<i># of households provided with safe water</i>	1,283	1,283
	<i># of people reached by hygiene promotion activities</i>	Not started ⁵	TBC
	<i># of households provided with hygiene kits</i>	200	200

Distribution of WASH Items: The earthquake caused damage to primary water sources including wells and springs. Furthermore, households whose homes collapsed lost water storage containers and hygiene supplies. In response, ARCS has distributed 1,280 jerry cans – for safe water storage – and 200 hygiene kits to affected households. In addition, 6 water trucks have been mobilized and are distributing 40,000 litres of safe water per day to affected households in ten villages. Additionally, 20 water tanks of 5,000-litre capacity each have been installed in strategic locations of the 10 villages to ensure that community members can collect water when they need it. The distribution of safe water is supported financially by the IFRC Secretariat and technically by the Turkish Red Crescent. There is coordination with Danish Committee for Aid to Afghan Refugees (DACAAR) on quality testing at the source.

Looking forward: Assessments point to the need for sustaining interventions focusing on preventing outbreaks of preventable diseases including acute watery diarrhoea (AWD) and measles. In this context, plans to scale up risk communication and community engagement (RCCE) on AWD and other diseases. Part of the approach will include the deployment of social and health mobilizers to conduct dialogues sessions in communities

⁵ As an urgent need, only hygiene promotion items were distributed. Plan is underway to scale up risk communication and community engagement on Acute Watery Diarrhea and other infectious diseases in flood and earthquake affected provinces

Enabling approaches



National Society Strengthening

Objective: *National Society capacity building and organisational development objectives are facilitated to ensure that the ARCS has the necessary legal, ethical and financial foundations, systems and structures, competencies, and capacities to plan and perform*

Key indicators:	Indicator	Actual	Target
	National Societies have effective and motivated volunteers who are protected	yes	yes
	# of national/provincial level trainings conducted for staff and volunteers of ARCS	6	10
	Rapid Response surge members deployed to support the operations	7	7
	ARCS compliance with principles and rules for humanitarian assistance is improved	Ongoing	Yes
	Communities are engaged and kept informed of operational plans and progress	Ongoing	Yes
	Exit Strategy is developed in consultation with the communities	Ongoing	Yes
	ARCS engages with other humanitarian actors for coordinated humanitarian intervention	Ongoing	Yes
	IFRC and NS are visible, trusted, and effective advocates on humanitarian issues	Ongoing	Yes

Surge Capacity: The IFRC Secretariat has mobilized seven technical experts to support the ARCS as well as the IFRC network in the ongoing response. Those deployed during July 2022 comprise specialists covering the following areas: Field Coordination, Human Resources, Information Management, Planning, Monitoring, Evaluation and Reporting (PMER), Procurement, and Shelter Programming. Moreover, recruitment of additional staff locally is being fast-tracked with two Data Assistants, two Response Officers and a Communications Coordinator engaged in July.



Coordination and Partnerships

Objective: *Technical and operational complementarity through the cooperation of Movement partners while engaging effectively with outside actors to influence actions at the local, regional, and global levels. There*

is a need to invest more to better articulate the auxiliary role of the National Society with all stakeholders, and accordingly, strengthen the IFRC's network footprint in the response

Key indicators:	Indicator	Actual	Target
	Movement-wide coordination mechanism	Yes	Yes
	Coordination with external stakeholders	Yes	Yes

Coordination with the authorities

As auxiliary to the public authorities, ARCS maintains close coordination with various public entities at national and subnational levels including ANDMA and Provincial Disaster Management Committees. The authorities have established an inter-ministerial committee for the earthquake response, and ARCS – as well as other humanitarian organizations – is being invited to attend the meetings to share its plans for support. The IFRC Secretariat is complementing by engaging with relevant ministries.

Movement cooperation and coordination

International Red Cross Red Crescent Movement partners in-country continue to coordinate closely in line with existing Movement Coordination and Cooperation mechanisms anchored under a Movement Cooperation Agreement (MCA). An Emergency Response Taskforce (ERT) has been agreed to be responsible for developing and monitoring the ARCS operational strategy, with ARCS at the centre and the IFRC Secretariat providing strategic coordination for the benefit of the IFRC Membership.

Membership coordination

A meeting of all in-country partners was held in July 2022 within the framework of IFRC's Agenda for Renewal's New Way of Working (New WoW). During the meeting, among others, some PNS agreed to pursue Shared Leadership in the implementation of the IFRC Emergency Appeal operation, leveraging their expertise, knowledge, and technical capacities. In this regard, plans have advanced for the Turkish Red Crescent to take the lead in the implementation of shelter and WASH with ARCS using funds mobilized via the IFRC Emergency Appeal. Furthermore, in July 2022, the German Red Cross undertook a scoping mission during which its representative held individual meetings with ARCS, IFRC Country Delegation, and PNS in-country to identify gaps and possible modalities for cooperation. The IFRC Country Delegation provided support and facilitation for the visit.

External coordination

IFRC and ARCS continue to engage in advocacy, humanitarian diplomacy, and coordination with other humanitarian actors, including agencies in the Humanitarian Country Team (HCT). The IFRC is an observer to the HCT and an active participant in the Inter-Cluster Coordination Team (ICCT) and relevant Cluster or Inter-Agency Working Group meetings/forums. These platforms are useful for information sharing, planning, analysis, and strategic coordination. Representation of the IFRC network in these forums is using the best-place approach. For instance, Danish Red Cross is representing the IFRC network in Child Protection and MHPSS Working Groups.



Shelter Cluster Coordination

Objective:

The humanitarian shelter and settlements sector is well coordinated, supporting a comprehensive, quality, coherent, and consistent shelter and settlements response

Indicator	Actual	Target
-----------	--------	--------

Key indicators:	<i>Participation in Shelter Coordination platform</i>	Yes	Yes
<p>ARCS and its partners are currently engaging with the Emergency Shelter and NFI Cluster and the authorities in planning support for shelter repairs and rebuilding. The planned Shelter intervention will provide emergency shelter kits and tarpaulins (as a short-term plan), repair of houses and rental assistance where applicable (as medium-term support) and repairing of damaged houses using the community-centric approach; community members providing building materials and construction techniques, and IFRC providing technical and financial assistance along with social mobilization and community engagement as long term plan. IFRC/ARCS has committed to repairing 2,030 damaged houses (520 houses in Pakita, 1510 in Khost). The Shelter intervention will follow the agreed model and the common minimum standards by the concerned authorities (ARCS, Shelter Cluster Team, Public Authorities). The process will also adopt indigenous practices of the beneficiaries, maintaining social cohesion, cultural norms, and traditions of the people throughout the shelter interventions.</p>			

Note: Other Sectors/Enabling approaches as outlined in the Operational Strategy, like PGI, Education, CEA, and IFRC Secretariat Services, will be reported in the next Operation Update.

D. FUNDING

In addition to the support provided by Movement partners in-country, the ARCS response is mainly resourced via the IFRC Emergency Appeal with a funding requirement - specifically for the Earthquake Operational Strategy- of CHF 10 million. To date, CHF 8.8 million has been obtained towards the Earthquake Operational Strategy, translating to an 88 percent coverage. Contributions have been received from the Austrian Red Cross (source of funding: Austrian Government), British Red Cross (source of funding: British Government), Finnish Red Cross (source of funding: Finnish Government), Japanese Government, Japanese Red Cross Society, Korean National Red Cross, The Netherland Red Cross (source of funding: The Netherlands Government), Norwegian Red Cross (source of funding: Norwegian Government), the Spanish Agency for International Development Cooperation (AECID), Supreme Master Ching Hai, Swiss Red Cross (source of funding: Swiss Government), and Z Zurich Foundation.

A financial report will be provided in the next operation update.

Contact information

For further information, specifically related to this operation please contact:

In the Afghan Red Crescent Society

- Dr. Mohammad Nabi Burhan, Secretary General; email: mohadnabi@gmail.com
- International Relations Department; email: int.relation.arcs@gmail.com

In the IFRC Country Delegation for Afghanistan

- Necephor Mghendi, Head of Delegation; email: necephor.mghendi@ifrc.org
- Rad Al Hadid, Operations Manager; email: rad.alhadid@ifrc.org
- Nur Hayati Ahmad, Programme Coordinator; email: nurhayati.ahmad@ifrc.org

In the IFRC Asia Pacific Regional Office in Kuala Lumpur

- Alexander Matheou, Regional Director; email: alexander.matheou@ifrc.org
- Juja Kim, Deputy Regional Director; email: juja.kim@ifrc.org
- Joy Singhal, Head of HDCC unit; email: joy.singhal@ifrc.org
- Felipe Delcid, Emergency Operations Manager; email: felipe.delcid@ifrc.org
- Eeva Warro, Operations Coordinator; email: opscoord.southasia@ifrc.org
- Siokkun Jang, Logistics Manager; email: siokkun.jang@ifrc.org
- Afrhill Rances, Communications Manager; email: afrhill.rances@ifrc.org

In IFRC Geneva

- Christina Duschl, Senior Officer Operations Coordination; email: christina.duschl@ifrc.org

For IFRC Resource Mobilization and Pledges support:

- Juliene de Bernard, Strategic Engagement and Partnership in Emergencies – Surge; email: PartnershipsEA,AP@ifrc.org

For planning, monitoring, evaluation and reporting (PMER) enquiries

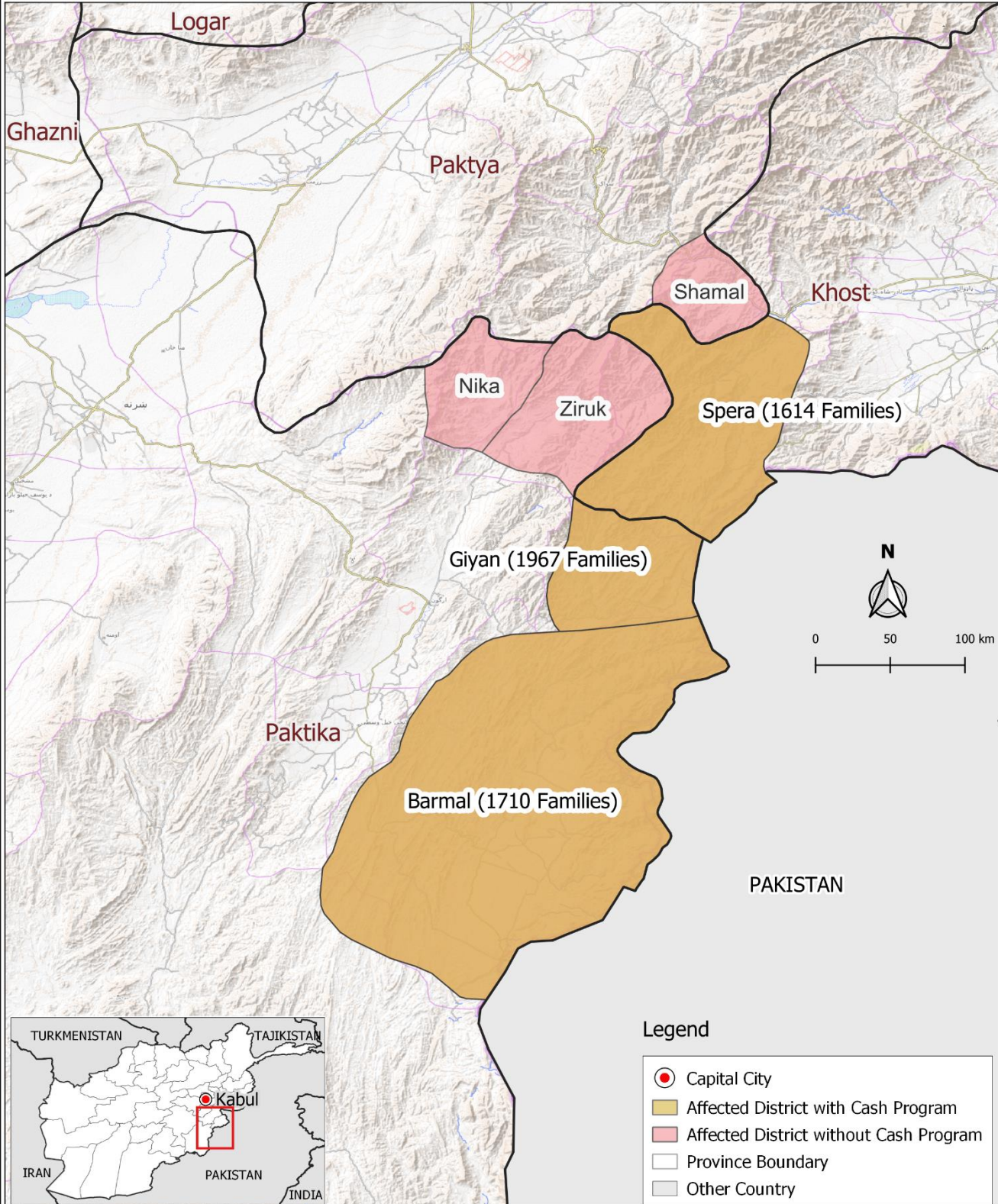
- Mursidi Unir, interim PMER Coordinator; email: mursidi.unir@ifrc.org

How we work

All IFRC assistance seeks to adhere the **Code of Conduct** for the International Red Cross and Red Crescent Movement and Non-Governmental Organizations (NGO's) in Disaster Relief, the **Humanitarian Charter and Minimum Standards in Humanitarian Response (Sphere)** in delivering assistance to the most vulnerable, to **Principles of Humanitarian Action** and **IFRC policies and procedures**. The IFRC's vision is to inspire, encourage, facilitate and promote at all times all forms of humanitarian activities by National Societies, with a view to preventing and alleviating human suffering, and thereby contributing to the maintenance and promotion of human dignity and peace in the world.

**Afghanistan: Khost and Paktika Earthquake
Operations Update #1**

31 July 2022



The maps used do not imply the expression of any opinion on the part of the International Federation of the Red Cross and Red Crescent Societies or National Societies concerning the legal status of territory or its authorities. Map data sources: OCHA, OSM Contributors, ICRC, IFRC, Earthquake USGS.