

www.ifrc.org
Saving lives,
changing minds.

Emergency Plan of action Final Report

Burkina Faso: Population Movement in Tougan

 International Federation
of Red Cross and Red Crescent Societies

DREF Operation	Operation no.: MDRBF016
Date of issue: 19 September 2022	Glide no.: CE-2021-000193-BFA
Operation start date: 1st December 2021	Operation end date: 28 February 2022
Host National Society: Burkinabe Red Cross Society	Operation budget: 314,063
Number of people affected: 12,923 people (Tougan)	Number of people assisted: 6,465 persons (750 households)
Red Cross Red Crescent Movement partners currently actively involved in the operation: Burkinabe Red Cross Society (BRCS), Luxemburg Red Cross, Belgian Red Cross, and IFRC.	
Number of partner organizations actively involved in the operation: Direction Provinciale de l'action humanitaire, Haut-commissariat du Sourou, Conseil National de Secours d'urgence et de Réhabilitation	

The major donors and partners of the Disaster Relief Emergency Fund (DREF) include the Red Cross Societies and governments of Belgium, Britain, Canada, Denmark, Germany, Ireland, Italy, Japan, Luxembourg, New Zealand, Norway, Republic of Korea, Spain, Sweden and Switzerland, as well as DG ECHO and Blizzard Entertainment, Mondelez International Foundation, Fortive Corporation and other corporate and private donors. DG ECHO and the Canadian Government contributed to replenishing the DREF for this operation. On behalf of the Burkinabe Red Cross Society (BFRCS), the IFRC would like to extend gratitude to all for their generous contributions.

A. SITUATION ANALYSIS

Description of the disaster

In November 2021, Burkina Faso has experienced an intensification of attacks by armed opposition groups in the Boucle du Mouhoun Region, specifically in Sourou province. A series of attacks was registered between 4 and 16 November targeting security posts and civil servants in the commune of Di destroyed the little safety that existed and on 18 November, the armed opposition groups took advantage of the poor security coverage resulting from these repeated attacks to threaten the population with reprisals for the host population stayed in DI. Fearing for their safety and as a result of the successive attacks, an important wave of displacement was observed out of Di and the surrounding area to seek refuge mainly in Tougan (most of IDPs), Gnessa, Toma, Dédougou, Ouagadougou, etc.

More than 5,000 people were affected. Mostly women and children from. The displaced population of November comes to add to the existing 14,922 internally displaced persons (IDPs), including more than 7,842 temporarily displaced students who had come from other areas where schools had been closed as a result of past similar security incidents.

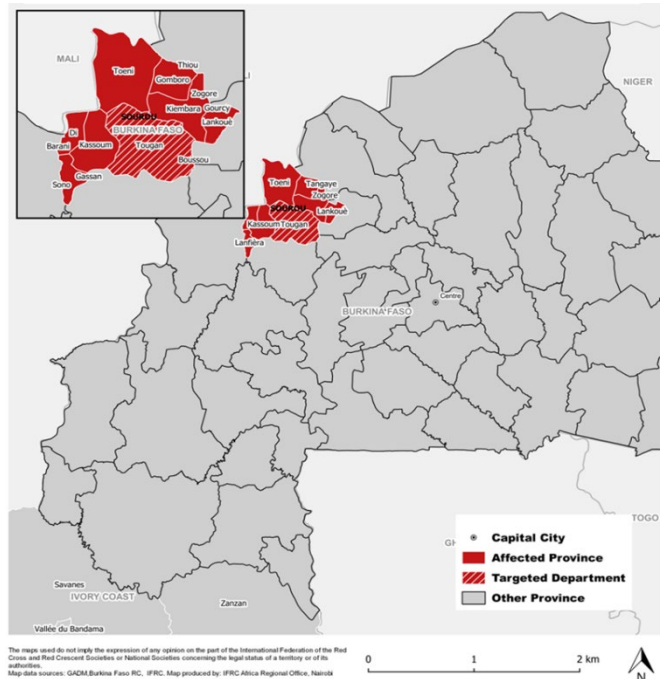
The displaced populations from DI and surrounding areas, who mainly lived from agriculture, fishing, and livestock, were deprived of their already precarious source of income in a difficult harvest climate. Di is a large production area that was in the harvest and drying period for rice production and market gardening. However, they had to abandon everything when they fled to the host areas, losing their livelihoods for most, while exacerbating the food crisis in the entire region.

During their displacement, many took little or nothing with them and others were looted beforehand. IDPs who found refuge in Sourou have lost their belongings and are now living in host households in Tougan or informal sites with a pronounced relocation trend to urban centers, mainly to have better access to social services and humanitarian assistance. Women heads of households and children also see their level of vulnerability accentuated because access to adequate shelter is increasingly limited because of saturation or high prices. These populations were in urgent lifesaving basic needs: essential household items (EHIs), food, livelihoods, and financial support to meet their rent and health care bills. Social, health, and school services in Tougan are also under severe pressure, including health, education, drinking water supply, etc. The psychological impact on IDPs and people who still have family in the threatened areas is growing, reinforced by financial

uncertainty and precarious living conditions. BRCS launched an emergency disaster response to support the urgent needs of the most vulnerable families in the highest host locality of Tougan. The displacement crisis is a complex situation in the country which emphasizes the emergency justifying the launched of the DREF in 2021. From the [OCHA report](#) on 20 May 2022, the number of IDPs is 1,893,250 in March for 1,423,378 on 31st August 2021 and it keeps on raising. Highlights of all humanitarian reports and National Society's include the fact that insecurity and known attacks in the "3 borders zone" (the country's borders with Mali, Niger, and Benin) are worsening even after the end of this response operation, being one factor of the ongoing food insecurity in the country.

Given the general humanitarian context in Burkina Faso, which has been experiencing a food crisis for several years, the growing drought, problems of access to water and health care, population movements from neighboring countries, etc., adds to the urgency of this displacement crisis for Tougan, which did not benefit from assistance for new IDPs.

More details of the emergency context prior the launch of this DREF operation, especially in Sourou and Tougan can be found in the initial [EPoA](#) with an extended analysis on food insecurity [here](#) on which IFRC has a [regional hunger appeal for action](#) plan.



Summary of current response

Overview of Operating National Society Response Action

In the early stage of IDPs arrival in Tougan in November, the BRCS has mobilized the Sourou Provincial Committee and 50 volunteers since the beginning of the month. The volunteers deployed in Tougan have provided psychosocial support to IDPs and conducted rapid needs' assessment. Using its available stock of essential household items (HHIs), the BRCS distributes EHI kits to 200 households during the week of 15 to 21 November in Tougan. Prior to this distribution, the National Society (NS) had 380 HHI kits, 320 WASH kits and 100 shelter kits prepositioned as part of their contingency plan.

The intervention allowed the following key assistance to the most at risk and vulnerable populations after proper detailed needs and market assessment was completed:

- Multisectoral targeting of the operation's beneficiary households based on well-defined criteria. This targeting was conducted through the following multiple successful steps detailed in the strategy with community consultation approach and a strong information sharing/coordination with provincial authorities and CONASUR.
- Provide Emergency shelter and household items to the planned 750 households or 6,465 people.
- Some 223 households, or 2,096 people, benefited from emergency shelters (Sahel shelter model).
- Training of volunteers first covering the data collection mechanism and tools, WASH, 15 volunteers in the construction of temporary shelters construction and safety,
- Reaching 26,836 people during home visits and focus groups for community-based sensitization on risk of waterborne diseases, Hygiene messages, prevention. include 8,293 for health promotion.
- Ensure shelter construction by volunteers with a proper safer Analyze families' settlement intent, conditions, and access and technical assistance messages, including safety and security for shelter site selection, construction, and maintenance. Discussion points will include accessibility, privacy, safety, and resolution of environmental issues
- Purchase and distribution of shelter and EHI kits
- Ensure the construction of temporary shelters for 30% of the targeted households that could not relocate to host communities, i.e., 225 targeted households.
- Purchase and distribution of 750 EHI kits: 01 pot size N° 7, 01 pot size N°5, 02 trays, 01 cup of 1 liter with handle, 01 cup of 0.5 liter with handle, 02 individual cups, 01 ladle, 01 ladle, perforated, 01 laundry basin, 01 knife, 03 two-seater matt, 03 blankets fit for two persons, and 01 solar lamp. Health items: 2,250 mosquito nets (3 per household). Under WASH, Hygiene: 02 buckets with lid, 02 jerrycans of 20L, 21 pieces of soap of 400g, 02 kettles, and 01 defecation pot for children, 3,350 tablets for 30 days/750HH, 1,124 dignity kits to women and girls of childbearing age
- Ensuring food assistance through cash to 775 households or 6,651 persons through cash transfer. Extended for an additional month and 25 HH added to the 750 initial planned by combining with the Pilot Programmatic Partnership (PPP) project implemented by the BRCS with the support of the IFRC and ECHO.

- Purchase and delivery of sanitation kits to 5 health centers and IDPs compose of: 150L Bleach, 75 brushes with handles, 30 kg soap powder, 75 pairs of gloves, 50 pairs of boots, 75 units of brooms with handles, 50 units of plastic garbage cans.

Overview of Red Cross Red Crescent Movement Actions in-Country

Burkina Faso has four Partner National Societies (PNS) in country, namely the Belgian Red Cross, Monaco Red Cross, Luxembourg Red Cross, and Spanish Red Cross. These PNS are already involved in assisting IDPs in other crisis regions, notably in the Sahel, the Centre-North, the East, etc.

With regards to the current crisis in the Boucle du Mouhoun and more specifically in Tougan, no NPS action is taking place in this locality, neither ICRC. However, update meetings on the situation will be held with all Red Cross partners to share on the evolution of interventions and possibly coordinate.

The Operations Coordinator and team of the Niamey Country Cluster Delegation supported the National Society throughout the implementation of the planned activities. An extension of IFRC funded operations is ongoing with a DREF response to the complex emergency of [food insecurity](#), with a scale-up perspective that will include the population displacement analysis on the targeting and strategy.

For more Movement partner actions registered in Tougan, please see the [EPoA](#).

Overview of Other Actors Actions in the Country

The response to the security crisis at the national level is mobilizing many humanitarian actors who are intervening much more in the Sahel, North, North-Central and East regions through diversified assistance in shelter, food security, Wash, protection, health, livelihoods, etc.

Despite the combined efforts of all humanitarian actors, there were still significant gaps throughout the country and with the new surge of arrivals in Tougan, the needs were yet still to be covered, both for new IDPs and for populations already in place. The most active humanitarian partners were: Social Action Service - Government with the support of OCHA, UNHCR, WFP and UNICEF, National Council for Emergency Relief and Rehabilitation (CONASUR), Terre des Hommes, Help, and Plan Burkina.

The BRCS has also implemented a WASH project with the support of UNICEF in the city of Tougan before the arrival of IDPs from Di. Prior to this disaster, the project had provided boreholes and latrines, distributed WASH kits and conducted hygiene and sanitation awareness campaigns for the previously arrived IDPs and host populations.

Identified actions of humanitarian partners in Tougan can be read [here](#) for more details.

Needs analysis and scenario planning

Sourou province is one of the areas most affected by the security crisis and population movements. As the provincial capital, Tougan is the preferred destination for IDPs seeking security. This city has the highest number of schools, health centers and active security forces. According to CONASUR, as of 30 September 2021, the commune of Tougan had registered over 7,045 internally displaced people. In addition to this group, there were over 7,842 students established in Tougan to continue their education after schools had been closed in their respective villages. There were also over 5,000 IDPs from Di who have been registered by provincial services in charge of humanitarian action. The situation of Tougan's IDPs is very difficult to determine because there are no settlement sites in the city. IDPs arrive and settle with host families, often without engaging with humanitarian services or local Red Cross. Sometimes they stay for a few days and then move on to other cities due to lack of assistance. These are mainly the cities of Dédougou, capital of the Boucle du Mouhoun region, Bobo Dioulasso, the economic capital, or Ouagadougou, where they have a better chance to earn a living and meet their needs. This situation led to a review of this operational strategy. Indeed, some households that benefited from the first essential households' items (EHI) Wash kit were not able to get their cash as most of them had left for other localities.

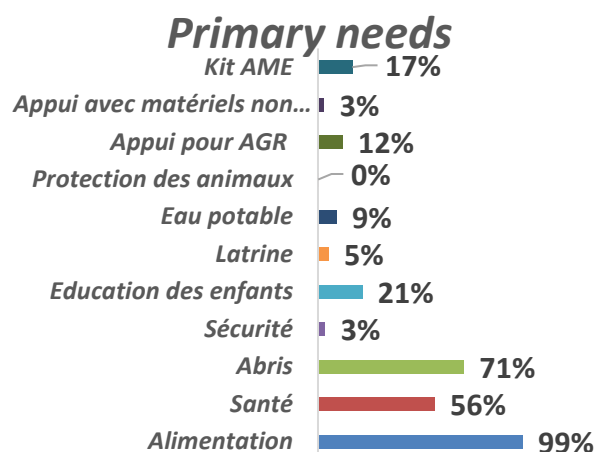
Throughout the operation, the security situation continued to deteriorate considerably in the province, and new people continued to settle in Tougan. The table below presents the situation of IDPs registered in the Boucle du Mouhoun region as of 28 February 2022, the closing date of this intervention according to CONASUR:

Provinces	Communes	Men	Women	Children under 5 years	Children over 5 years	Total Children	Total number of IDPs
Bale	Boromo	902	1,123	1,097	1,773	2,870	4,895
	Fara	778	850	1,339	1,023	2 362	3,990
	Pa	32	63	32	125	157	252
	Poura	602	608	474	1,253	1,727	2,937
	Siby	1,079	1,206	1,824	1,450	3,274	5,559
Banwa	Balave	12	21	16	50	66	99
	Kouka	101	131	57	200	257	489

	Sanaba	55	56	32	118	150	261
	Solenzo	245	405	345	671	1,016	1,666
	Tansila	7	6	-	15	15	28
Kossi	Barani	238	291	130	513	643	1,172
	Bomborokuy	1,230	1,551	674	2,925	3,599	6,380
	Bourasso	15	12	4	25	29	56
	Djibasso	1,075	1,329	624	2,723	3,347	5,751
	Dokuy	2	1	1	5	6	9
	Kombori	182	191	73	293	366	739
	Madouba	64	68	23	96	119	251
	Nouna	1,561	1,904	938	3,619	4,557	8,022
	Sono	4	1	1	2	3	8
Mouhoun	Bondokuy	48	77	93	142	235	360
	Dedougou	439	607	310	1,159	1,469	2,515
	Douroula	24	25	16	56	72	121
	Kona	57	71	51	126	177	305
	Ouarkoye	36	56	43	104	147	239
	Safane	4	5	4	5	9	18
Nayala	Gassan	21	25	17	50	67	113
	Gossina	3	-	-	6	6	9
	Kougny	1	3	-	-	-	4
	Toma	23	38	26	55	81	142
	Yaba	36	40	22	72	94	170
	Ye	14	15	8	29	37	66
Sourou	Di	413	444	406	920	1,326	2,183
	Kiembara	112	96	55	444	499	707
	Lanfiera	17	23	20	66	86	126
	Lankoue	32	32	2	38	40	104
	Tougan	3,076	3,000	1,108	5,739	6,847	12,923
Total	12,540	14,374	9,865	25,890	35,755	62,669	

Priority needs identified

The assessments conducted by BRCS and by other organizations in Tougan (serving as secondary data) reveal a significant deterioration in the living conditions of IDPs and host populations, which is reflected in the expression of priority needs in terms of food, shelter, household items and necessary WASH, protection, and health. These needs that were not initially covered by existing organizations, are becoming more urgent with the new arrivals of displaced people. Many displaced people said they would return to their areas and deal with armed context to have at least a possibility to access agriculture possibilities to survive. Others plan to continue to bigger cities in search of paid work to meet their basic needs. By category, the needs expressed by IDPs as primary information are as follows aside:



Details of needs per sectors is more developed in the EPoA and have not changed much from the onset. Only the number of affected and the hierarchy of priority need which required to be updated. Please access details on the need analyzed in page 5 to 7 of the EPoA [here](#).

Risk analysis

The risks of this operation summarized in the EPoA applied for the majority of which were identified. Needs escalation analyzed in the scenario has also been the case in Tougan and NS has started supporting the IDPs thanks to PPP ECHO project and the balance of this DREF response due to savings on procurement and others communication/CEA activities.

B. OPERATIONAL STRATEGY

The overall objective of this intervention was to help meet basic and urgent needs of 750 Households or 90% of the internally displaced persons (IDPs) initially identified in Tougan through food assistance, shelter, and essential non-food items for households.

Implemented strategy

The objective of reaching 750 HHs has been met within the three (3) months intervention with the collaboration and support of technical services, administrative and community authorities of the province and based on a detailed, multi-sectoral assessment of IDPs' needs together with a targeting of beneficiaries in the city of Tougan. The response was through in-kind assistance for shelter, EHI, WaSH, and dignity kits, and in cash for food. The operation was implemented through the following activities:

i. The data collection and targeting

The main lists of displaced households were provided by the Provincial Directorate in charge of national solidarity and humanitarian action in Sourou. Based on these lists, the most vulnerable households were identified according to well-defined criteria to benefit from different types of assistance. The approach established for the implementation of this activity was as follows:

o Volunteer training and data collection

Data collection for the targeting was done through Smartphones via the ODK tool. Twenty (20) volunteers were trained in the use of the tool and in data collection techniques. The questionnaire was entirely translated into local languages to facilitate its understanding by the volunteers. Simulations were also carried out to ensure that volunteers had mastered the tool before being deployed in the field to collect data. Volunteers were informed of the BRCS's feedback mechanism and were instructed to share the toll-free number with all households surveyed. Data collection lasted six days and resulted in the survey of 1,356 households.

o Multisectoral targeting of the operation's beneficiary households

The beneficiary households of this assistance were identified after an overall targeting based on well-defined criteria. This targeting was conducted through the following steps:

✓ Exchange with and information to provincial authorities

To get buy-in and support from local authorities for the implementation of this activity, a BRCS mission made up of staff at the central level and the Sourou provincial committee was sent to the Tougan High Commission and Town Hall to present the process for targeting beneficiaries. The authorities greatly appreciated the approach and pledge support to BRCS for the success of this activity. For this purpose, the High Commissioner instructed the Provincial Director of Social Action to take measures to facilitate the implementation of the activity.

✓ Exchange with humanitarian action services

CONASUR, through its branches, and the humanitarian action services are the only entities authorized to register displaced households in Burkina Faso. For that purpose, only the Provincial Directorate of Humanitarian Action in Sourou could provide the BRCS with lists of displaced persons in Tougan. BRCS met with humanitarian action agents to discuss the targeting process and to request their technical support in making the lists available and supervising data collection in the field. Several lists of more than 1,300 displaced households were handed over to the BRCS and an agent was sent to accompany the process. The targeting criteria were also discussed.

✓ Exchange with community leaders (IDP representatives, key informants, etc.)

Prior to the launch of the targeting process, a meeting was held with community leaders, particularly the representatives of IDPs, to present the broad outlines of the activity and to discuss the criteria for selecting beneficiaries. The purpose of this meeting was to solicit their involvement throughout the targeting process. Thus, at the end of the discussions, they committed to accompany the BRCS in the implementation of the activity through the mobilization of IDPs and the communication of the selection criteria to IDPs. They were also very helpful in finding households whose telephone numbers

did not work or who did not have one. At times, they served as relays for the reporting of complaints to the operation's implementation team.

✓ **First analysis of the data (cleaning, cross-referencing, triangulation, secondary verification in the field)**

Finally, to ensure the quality of the data collected, a second team of volunteers who had not participated in the data collection were sent with the cleaned list to identify households and ensure that the information they provided was accurate.

○ **Second analysis of the data (finalization and validation of beneficiary lists and breakdown by type of assistance in light of the criteria)**



Meeting with community leaders to validate the lists

Upon the completion of the first analysis, a second analysis was made on the basis of the new information collected by the verification team to establish the final list of households. The beneficiary households were then identified based on the selection criteria for each type of assistance. A meeting was organized with community leaders, technical services, and authorities to present the results of the targeting and to validate the lists of beneficiaries. The lists were then adopted and the beneficiaries were contacted for the assistance phase.

The following criteria prevailed in selecting beneficiary households for this assistance:

Priorities	Criteria
Priority 1	Homeless household in need of shelter, head of household living with a disability (mental and/or physical), household intending to stay in place, household living without host family, household having 18 square meters of space
Priority 2	Homeless household in need of shelter, head of household living with a disability (mental and/or physical), household intending to stay in place, household living with host family, household having 18 square meters of space
Priority 3	Homeless household in need of shelter, household living without host family, household intending to stay in place, household having 18 square meters of space, female head of household and no disability
Priority 4	Homeless household in need of shelter, household living without host family, household intending to stay in place, household having 18 square meters of space, male head of household and no disability, aged between 15-35 and 46+ years.

ii. **Emergency shelter and household items (reached: 750 households or 6,465 people)**

Assistance under shelter was for **Shelter construction** and Distribution of EHI kits to families. To achieve this result, BRCS has ensured

- Proper analysis is conducted on returns willing and taking into consideration on targeting. The BRCS has ensured the availability of sufficient space and the agreement of the landowner before envisaging the construction of shelters within households' compounds even if Tougan initially didn't have place for their installation.
- In addition to training of volunteers on construction technics, technical assistance messages, including safety and security for shelter site selection, construction, and maintenance. Discussion points will include accessibility, privacy, safety, and resolution of environmental issues
- The construction of shelters within the beneficiary compounds was preceded by a sensitization phase with the latter. During these discussions, a presentation of the shelter, its strengths and weaknesses and good practices for better maintenance of the shelter, is made to the households.

Procurement and EHI kits distribution done in two phases. The first phase, which reached 200 households, was carried out in November using the BRCS contingency stock, and the second phase, between December and January, reached 550 households following the acquisition of the kits provided for in this operation. Because the Tougan market is not sufficiently

supplied with building materials for shelters (Sahel shelter model) and essential household items, the items were purchased in Ouagadougou then transported on the field. These purchases were made according to the procedures of the BRCS and on the basis of a framework contract that the BRCS signed with suppliers. This facilitated the purchase of the various kits, which were delivered to Tougan within two weeks. A total of 225 shelter kits of the Sahel model and 750 EHI kits were purchased and transported to Tougan. The 200 kits initially distributed were withdrawn to replenish the BRCS's contingency stock.

Ensure the construction of temporary shelters for 30% of the targeted households that could not relocate in host communities, i.e., 225 targeted households

At the end of their training, the groups of volunteers were deployed in the different sites of reception of the IDPs to provide them support for the realization of their shelter (Sahel shelter model). The beneficiaries were invited during the distribution campaigns to collect their shelter kits from the provincial committee headquarters and were involved in all steps of the construction to allow them to understand the process, to take ownership of the shelter to facilitate its maintenance. A total of 223 shelters (Sahel shelter model) of 14 m2 each have been built to house 892 people according to the SPHERE standards. However, the actual size of the 223 assisted households is 2,096 persons.



Purchase and distribution of 750 EHI kits

Assistance with EHI kits reached 750 households or 6,465 people. The kits were purchased in Ouagadougou and transported to Tougan. The kits distributed were composed of the following:

- To avoid gatherings and long queues during the distributions, households were scheduled in small groups morning and afternoon. Before each distribution, the beneficiaries were informed about the composition of the kits they were to receive. They were also reminded of the BRCS's feedback mechanism and the different channels through which they could make their complaints.



iii. Livelihoods and basic needs (Target: 750 households or 6,465 people)

The food assistance provided under this project covered food needs of 750 households or 6,451 displaced persons through cash transfer. However, it was extended for an additional month thanks to funds from the Pilot Programmatic Partnership (PPP) project implemented by the BRCS with the support of the IFRC and ECHO. Better still, the target was increased with these funds to 775 households or 6,651 persons.

The decision to use cash transfers for this assistance was supported by an analysis of the Tougan market, which proved conclusive in terms of its ability to meet the demand that will be made during the operation and with no repercussions whatsoever. Thus, following the multi-sectoral targeting and the validation of the list of cash beneficiaries, the BRCS recruited a service provider. During its discussions with humanitarian organizations in the area and especially during the market study, it became clear that YUP was well established in Tougan and had a strong experience in cash transfers to displaced persons in the area. This service provider had worked with “Terre des Hommes” in its interventions for the benefit of the IDPs of Tougan. Thus, the contract of the BRCS with YUP which had expired at the end of December 2021 was renewed for this assistance.

Following the renewal of the contract, BRCS enrolled the beneficiaries for the opening of YUP accounts for fund transfers. Each beneficiary was required to have a SIM card and an identification document. However, some beneficiaries did not meet the required conditions, so workarounds were proposed such as the use of under-coverage for people who did not have identification documents or the hybrid solution that allowed beneficiaries who did not have SIM cards to withdraw their money directly in cash from the YUP counters in Tougan.



Sensitization of households on the use of cash

During the enrollment phase, households were adequately informed about the amount and frequency of the transfers they would receive and then sensitized on the actual use of the funds. Each household was to receive 50,000 CFA francs per month for two months. This money was to be used to cover the household’s food needs for the two months. Once enrollment was completed, transfers were made to the accounts of the beneficiaries who went effectively to the cashpoint for withdrawal.

To ensure that the money received was used, a Post distribution monitoring (PDM) was conducted and revealed that:

- 100% of respondents’ households were satisfied with the targeting
- 93,36% of them said they were satisfied with the Cash transfer modality
- 95,74% said they felt safe when withdrawing their money
- More than 97% considered that cash helped prevent food insecurity and improved access to food
- In terms of use of cash, food comes first with 67%, followed by health care and other expenses with 24% and 16% respectively.

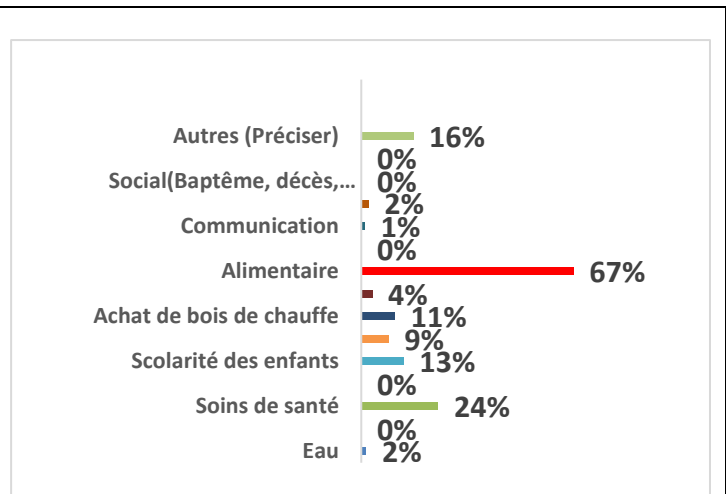




Figure 1: Sensitization of cash beneficiaries

iv. Health (Target: 750 households)

To prevent diarrheal diseases and malaria in the displaced communities of Tougan, health activities have been carried out within the framework of this intervention including:

- **Community awareness on the risk of waterborne diseases and malaria**

An awareness campaign was organized in Tougan for displaced persons and the host population. It was carried out by 20 volunteers assisted by a team leader. The volunteers were briefed by the health district for two days during which their capacities were reinforced on diarrheal diseases and malaria. The volunteers were trained in pairs and each one of them conducted sensitization activities in Tougan. At the end of this campaign, 8,293 people had been reached during home visits and focus groups.



- **Distribution of mosquito nets for the targeted households, i.e., 2,250 nets (3 per household)**

The distribution of EHI kits was coupled with the distribution of impregnated mosquito nets to beneficiary households. A total of 2,250 nets, each a 2-person net, were distributed to 750 households, i.e., 3 units per household. During the awareness campaigns in the households, the volunteers reminded the households of the importance of sleeping under the nets.

- **Establishment of a surveillance committee to provide feedback on the cases of disease**

The volunteers who conducted the awareness sessions also performed the role of monitoring and reporting on the diseases with the support of community leaders. They were in charge of reporting any suspicious case encountered in households to the health centers during home visits.

v. Water, Hygiene and Sanitation (Target: 750 households for items and 26,836 for awareness messages)

To improve the hygiene and sanitation conditions of the displaced people, actions have been carried out within the framework of this operation. These actions are summarized as follows:

- **Purchase and distribution of 750 hygiene kits**

The BRCS purchased hygiene kits and sent them to Tougan for distribution to IDPs as part of this operation. The beneficiaries of this assistance were identified following multi-sectoral targeting and the lists were validated with the IDP representatives. The beneficiaries were then called in groups to receive their kits. The different kits were composed of 02 buckets with lid, 02 jerrycans of 20L, 21 pieces of soap of 400g, 02 kettles, and 01 defecation pot for children. The criteria for selecting beneficiaries were crossed with the shelter criteria and the most at need of hygiene items considering their living conditions.

- **Purchase and distribution of 1,124 dignity kits to women and girls of childbearing age**

To improve the menstrual hygiene of women and girls of reproductive age, the BRCS has purchased and delivered dignity kits. These kits were distributed to women and girls meeting the criteria from the 750 beneficiary households. In total 1,124 kits were distributed to women and girls by the female volunteers of the BRCS to preserve their privacy. Vulnerability criteria has been applied to the beneficiary selection.

The kits distributed were composed of 01 bucket of 5L, 04 sanitary pads, 01 bag, 02 panties, 01 pouch, 01 guide for the use of the kit, 01 menstrual calendar, and 01 piece of non-irritating soap.

During the various distribution sessions, awareness sessions on the use and maintenance of the kits were conducted for the beneficiaries.

- **Purchase and distribution of aquatabs for water purification to all 750 households for the treatment of their drinking water in sufficient quantities for 30 days**

To promote the consumption of drinking water among displaced households, the BRCS purchased and distributed aquatabs. However, due to a shortage of aquatabs on the market, the delivery was only effective at the end of February, a few days before the end of the project. The 3,350 tablets were distributed to the 750 households in a single distribution covering their needs for 30 days. The distribution was accompanied by awareness sessions on their use.



- **Organize awareness sessions on the promotion of hygiene and sanitation**

As part of this operation, the BRCS conducted hygiene and sanitation awareness campaigns among displaced households and the Tougan community. To this end, 20 volunteers supported by a team leader were trained in hygiene promotion and animation techniques. They were divided into pairs to conduct awareness sessions through focus groups or home visits. During the three months of implementation of this operation, 36 outings were conducted throughout the city of Tougan, and the animations focused on water hygiene (source, transport, storage, use); hand hygiene; food hygiene; hygiene of the living environment; use and maintenance of latrines, etc.

In total, the awareness sessions reached 26,836 people, distributed as follows:

Outings	Number of men	Number of women	Number of children	Total
Focus group	3,326	9,866	6,864	20,056
Home visit	2,166	2,750	1,864	6,780
Total	5,492	12,616	8,728	26,836

- **Design/printing of information, education and communication materials on WASH and Health messages**

The various awareness sessions on hygiene promotion were conducted with specially designed image boxes. The BRCS first used available image boxes to save time. These boxes were later replaced by those designed for this operation. The boxes dealt with the following themes: Water hygiene (source, transport, storage, use), Hand hygiene, Food hygiene, Hygiene of the living environment, Use and maintenance of latrines, Contamination pathways and barriers, Water quality scale (WQS), Sanitation quality scale, Disadvantages of open defecation and advantages of having a latrine, Management of children's faeces, etc. **Total of 50 posters; 1,000 flyers and 10 image boxes were used.**

- **Purchase and delivery of sanitation kits to 5 health centers and IDPs** to contribute to the improvement of their living environment. The BRCS has acquired sanitation kits which were provided to health centers and schools hosting IDP students. The kits are composed of the following: 150L Bleach, 75 Brushes with handles, 30 kg Soap powder, 75 pairs of gloves, 50 pairs of boots, 75 units of brooms with handles, 50 units of plastic garbage cans.

C. DETAILED OPERATIONAL PLAN



Shelter

Beneficiaries: 750 households or 6,465 persons

Men: 3,083

Women: 3,382

Indicators:	Targets	Actual
Number of households assisted with shelter and essential household items	750	750
Number of households assisted with emergency shelter	225	223
Number of persons assisted with EHI kits	4,500	6,465

Outputs

As part of this operation, the BRCS provided assistance to 750 households with emergency shelters of the Sahel shelter model and essential household items. A total of 223 households benefited from shelter kits and technical support for the construction of their shelters. As for EHI kits, the 750 households initially planned were assisted. 02 shelters could not be built because the beneficiaries had to move to other locations after receiving their kits. The highlights of this activity are the following:

- Distribution of all the kits
- Briefing of the volunteers on the composition of kits and Training of 15 volunteers in the construction of temporary shelters and their mobilization to accompany the construction work in the communities
- Pre-positioning of the kits already prepared before distribution
- Putting in place of coupons for the withdrawal of the kits
- Respecting the composition of kits according to the clusters
- Daily distribution schedule to avoid exposing beneficiaries to the sun
- Training of volunteers on shelter construction
- Availability of volunteers for shelter construction
- Involvement of some beneficiaries in shelter construction
- To provide technical support to beneficiary households for the construction of emergency shelters, the BRCS has trained 30 volunteers in the provincial committee in construction techniques for the Sahel Shelter model. For three days, their capacities were strengthened on the various stages of the realization of the Sahel Shelter model, including establishment, erection of the framework, covering, etc. These volunteers were then divided into groups of 5 to support the beneficiaries in building their shelters.



Training of volunteers in the construction of shelters

Challenges

- Continued movement of IDPs to other locations
- Insufficient communication on the types of assistance per beneficiary
- Crowds of non-recipients at the sites during information and convocation calls
- Distribution of some incomplete kits

- Necessity to take into account the cost of transportation for shelter kits for some beneficiaries was identified
- Insufficient storage facility at the committee headquarters
- Lack of transportation means for the provincial committee
- Lack of framework contract for transportation and High cost due to the security and socio-economic context

Lessons learned

- Set up a mechanism to systematically prioritize people with disabilities, elderly people and pregnant women/breastfeeding women as done in this DREF
- Always communicate clearly on the types of assistance (content of kits or amount of cash) to beneficiaries during information and convocation calls
- Plan to cover the cost of transportation for the kits on a case-by-case basis
- Pre-position the kits in the vicinity of the beneficiaries so that the latter do not have to travel long distances
- Improve waiting conditions for beneficiaries (tents, benches, drinking water, etc.)
- Implementation of the manual of procedures
- Recruit local suppliers and service providers earlier prior the DREF operations



Livelihoods and basic needs

Beneficiaries: 750 households or 6,451 persons

Men: 298

Women: 3,471

Indicators:	Targets	Actual
Number of households that received cash transfer	750	750
% of households that used cash to cover their food needs	100	100

Outputs

Food assistance was provided in the form of cash transfers to 750 households (6,451 people). Each household received 50,000 CFA francs to cover its food needs for one month. This assistance was completed by the ECHO PPP project with a second transfer of the same amount to all households while taking care of 25 other households. The beneficiary households were sensitized on the use of cash during the enrolment phase. A PDM was also carried out to ensure the proper use of the funds. The highlights of the implementation of this activity are the following:

- Setting up enrolment sites in the vicinity of beneficiaries
- Briefing of volunteers on the cash modality
- Sensitization of beneficiaries on the components of the project (donor, amount, frequency, payment mechanism, use and feedback mechanism, and GBV)
- Use of the payment without account (no document, contact)
- Diligent management of requests
- Priority to vulnerable persons (pregnant women, elderly persons, and disabled persons)
- Provide support to IDPs' representatives

Challenges

- Huge crowds at the withdrawal points
- Delay in the implementation of the operation (administrative procedures)
- Continuous movement and new arrivals of IDPs seeking assistance

Lessons learned

- Favor the hybrid system for the management of cases of beneficiaries who have no identification documents and no account.



Health
Beneficiaries: 8,293
 Men: 3,981
 Women: 4,312


Indicators:	Targets	Actual
% of the target population reached by sensitization	100	100
Number of posters and IEC distributed	300	0
% of mosquito nets purchased	2,250	2,250
% of people with PSS needs receiving PSS services	50	100
% of volunteers reached by PSS services	100	100
Outputs		
<p>The health actions within the framework of this operation consisted in particular of sensitization sessions on diarrheal diseases and malaria, psychosocial care of IDPs and distribution of mosquito nets. All the activities were carried out except the distribution of posters. Volunteers were able to sensitize all the beneficiary households and to provide psychological support to the households during sensitization sessions. All households received three 2-person mosquito nets each, for a total of 2,250 nets distributed. All the volunteers who participated in the operation also benefited from regular psychological debriefings. The following points were highly appreciated during the implementation of this activity: briefing of volunteers; availability of volunteers; use of image boxes; and the community's keen interest in the awareness sessions.</p>		
Challenges		
<ul style="list-style-type: none"> Reluctance of some non-beneficiary households 		
Lessons learned		
<ul style="list-style-type: none"> Advocacy for the consideration of other needs not covered by the project activities (latrines, hand washing facilities, etc.) Capacity building of volunteer facilitators on IEC/BCC 		



Water, Sanitation and Hygiene
Beneficiaries: 26,836 persons
 Men: 9,681
 Women: 17,155

Indicators:	Targets	Actual
# of people who received WASH assistance	4,500	26,836
# of households that received aquatabs	750	750
# of aquatabs distributed	33,750	33,750
# of households sensitized on the use of aquatabs	750	750
# of volunteers trained on hygiene promotion and sanitation	20	21
# of people sensitized on hygiene and sanitation	4,500	26,836
# of households that received Wash kits	750	750
# of women and girls who received dignity kits	562	1,124
Number of sanitation kits given	15	10
Outputs		
<p>Wash assistance in this operation focused on the distribution of Wash kits, dignity kits, aquatabs, sanitation kits to health centers and schools, and awareness sessions on hygiene and sanitation. All the planned activities were carried out even if some difficulties were noted, notably the late delivery of sanitation kits and aquatabs. The awareness sessions reached beyond the beneficiaries to other IDPs and even the host community. This explains the large number of people reached. The highlights of this activity are the following:</p> <ul style="list-style-type: none"> Distribution of all the kits provided 		

<ul style="list-style-type: none"> • Briefing of the volunteers on the composition of kits • Pre-positioning of the kits already prepared before distribution • Putting in place of coupons for the withdrawal of the kits • Respecting the composition of kits according to the clusters • Daily distribution schedule to avoid exposing beneficiaries to the sun • Sensitization of women on the use of kits • Taking gender (women) into consideration in the distribution of dignity kits • Briefing of volunteers on hygiene promotion • The community's keen interest in the awareness sessions with the use of image boxes
Challenges
<ul style="list-style-type: none"> • Insufficient communication on the types of assistance per beneficiary • During distribution, some challenges such as: huge crowds of non-beneficiaries on the sites during information and convocation calls resulting in their reluctance of them; Distribution of some incomplete kits; • Late delivery of sanitation kits and aquatabs to challenge on security access to manage as a priority and unavailability in nearest markets.
Lessons learned
<ul style="list-style-type: none"> • Work more on advocacy for the consideration of other needs not covered by the project activities (latrines, hand washing facilities, etc.) • Availability of volunteers in the area but need to work on the proper use of IEC/BCC. • Pre-position the kits in the vicinity of the beneficiaries comes as a solution for future operation so that the latter do not have to travel long distances • Improve waiting conditions for beneficiaries (tents, benches, drinking water, etc.).

 <p>Inclusion and Protection Beneficiaries: Men: Women:</p>		
Indicators:	Targets	Actual
Number of briefing sessions on PGI to staffs	01	00
Challenges		
This activity could not be carried out because the BRCS has no Protection, Gender, and Inclusion focal point until now.		
Lessons learned		
Set up a mechanism to systematically prioritize people with disabilities, the elderly and pregnant women/breastfeeding women		

Strengthen National Societies		
Indicators:	Targets	Actual
% of volunteers involved in the implementation of this operation insured	100	100
# of volunteers equipped with protective equipment	54	55
# of articles disseminated on the operation	03	06
# of dissemination channels used	04	04
# of lessons learned workshops	01	01
% of feedback processed	90	100
Outputs		
<ul style="list-style-type: none"> • All the volunteers involved in the implementation of this operation benefited from the IFRC's insurance. They were also provided with protective and visibility equipment for the implementation of the activities, these included bibs, masks, gloves, etc. • The activities had a great media coverage through television, radio, print media and social networks. More than 06 articles were produced and disseminated through local and national media. 		

- The complaints and feedback mechanism were in great demand during this intervention. A total of 94 calls including 48 complaints, 15 thanks, 09 requests for assistance, 13 requests for information, and 09 for other information were received on the BRCS toll-free number. All requests were processed by the operation's implementing team.
- A workshop on lessons learned was organized with all stakeholders to analyze the performance in the implementation of this operation.

Challenges

- High demand for BRCS assistance to IDPs with a continued flux of IDPs, complexified and increased needs
- Use of new volunteers to assist IDPs

Lessons learned

- Given the deterioration of the security situation and the increase in the number of IDPs it is urgent to provide new and more substantial assistance to IDPs in the Boucle de Mouhoun and also in other localities facing the same context which affect the livelihood and food security.
- Ensure the dissemination and continuous training of volunteers in the provincial committee.

To note, most of the challenges and lessons learnt were the same in the different sectors. Especially regarding the distribution, the logistic and communication process around it; the security challenges for the team and the communities; the importance of needs that required continuous monitoring...

D. Financial Report

As of 28 February, total expenditure as CHF 290,921, 93% of expenditures in the allocation received of CHF 314,063. The balance of CHF 23,142 is to be returned to the DREF pot. Variance explanations is detailed below per cost category:

Description	Budget	Expenditure	Variance	Variance in %	Variance explanation
Disbursement of Relief items, Construction, Supplies					
Shelter - Relief	55,120	51,036	4,084	7	All the activities took place and the high balance under Teaching material is coming from posters materials do not procure on time in the period of the timeframe.
Water, Sanitation & Hygiene	49,304	47,425	1,879	4	
Medical & First Aid	14,400	14,000	400	3	
Teaching Materials	4,368	1,337	3,031	69	
Other Supplies & Services	51,200	49,274	1,926	4	
Cash Disbursement	63,032	61,447	1,585	3	
Logistics, Transport & Storage					
Distribution & Monitoring	4,720	1,545	3,175	67	Distribution cost was higher than budgeted as there were no need to do procurement of items for the installation of distribution sites.
Transport & Vehicles Costs	8,400	7,589	811	10	
Personnel					
National Society Staff	7,920	17,195	-9,275	-117	Needs of more monitoring from technical staff led to higher cost than budgeted and financial following different waves of the displaced population received, continuous assessment and implementation monitoring.
Volunteers	13,135	2,518	10,617	81	
Consultants & Professional Fees					
Professional Fees	896		896	100	This budget was planned to cover the translation of the final report which was not finally done by an external supplier. As the final report was finalized late after the timeframe, no order was possible again to be booked under this operation.
Workshops & Training					
Workshops & Training	11,040	9,274	1,766	16	Some training was difficult to take place because of the situation the security and the timeframe
General Expenditure					
Travel	5,520	3,599	1,921	35	The travel forecasted by the coordination team took place in less time than initially planned but remote support was more
Information & Public Relations	2,000	2,417	-417	-21	

Office Costs	960	1,348	-388	-40	needed to ensure follow-up and continuous update regarding the implementation, the security challenges and the movement coordination. This remote support coming with the use of more general and communication cost by IFRC delegation and NS.
Communications	1,680	2,473	-793	-47	
Financial Charges	1,200	690	510	43	
Indirect Costs					
Programme & Services Support Recover	19,168	17,756	1,412	7	
Grand Total	314,063	290,921	23,142	7	

Contact information

Reference documents



Click here for:

- Operation Update
- Emergency Plan of Action (EPoA)

For further information, specifically related to this operation please contact:

For Burkina Faso Red Cross:

- Lazare Zoungrana, Secretary General, Burkinabe Red Cross Society; email: zwendlaze@yahoo.fr; phone: +226 70220560

IFRC Country Cluster Office, Niamey;

- Thierry Balloy, Head of Niamey Country Cluster Delegation; email: thierry.balloy@ifrc.org

IFRC office for Africa Region:

- Rui Alberto Oliveira, Head of Disaster Crisis Prevention, Response and Recovery Department a.i, Nairobi, Kenya; email: rui.oliveira@ifrc.org

In IFRC Geneva

- Operation manager, Richard Casagrande, Senior Officer, DCPRR unit Geneva; email: richard.casagrande@ifrc.org
- **DREF:** Nicolas Boyrie, DREF Lead, email: nicolas.boyrie@ifrc.org
- **DREF:** Eszter Matyeka, DREF Senior Officer, DCPRR Unit Geneva; Email: eszter.matyeka@ifrc.org

For IFRC Resource Mobilization and Pledges support:

- IFRC Africa Regional Office for Resource Mobilization and Pledge: Louise Daintrey, Head of Unit, Partnership and Resource Development, Nairobi, email: louise.daintrey@ifrc.org;

For In-Kind donations and Mobilization table support:

- **IFRC Africa Regional Office for Logistics Unit:** Rishi Ramrakha, Head of Africa Regional Logistics Unit, email: rishi.ramrakha@ifrc.org; phone: +254 733 888 022

For Performance and Accountability support (planning, monitoring, evaluation, and reporting inquiries)

- IFRC Africa Regional Office: Philip Komo Kahuho, Regional Head, PMER and Quality Assurance Planning and Monitoring Unit, email: philip.kahuho@ifrc.org; phone: +254 732 203 081

How we work

All IFRC assistance seeks to adhere to the **Code of Conduct** for the International Red Cross and Red Crescent Movement and Non-Governmental Organizations (NGO's) in Disaster Relief and the **Humanitarian Charter and Minimum Standards in Humanitarian Response (Sphere)** in delivering assistance to the most vulnerable. The IFRC's vision is to inspire, encourage, facilitate, and promote at all times all forms of humanitarian activities by National Societies, with a view to preventing and alleviating human suffering, and thereby contributing to the maintenance and promotion of human dignity and peace in the world.

www.ifrc.org

Saving lives, changing minds.



The IFRC's work is guided by Strategy 2020 which puts forward three strategic aims:

1. Save lives, protect livelihoods, and strengthen recovery from disaster and crises.
2. Enable healthy and safe living.

3. Promote social inclusion and a culture of non-violence and peace

DREF Operation

Selected Parameters			
Reporting Timeframe	2021/12-2022/6	Operation	MDRBF016
Budget Timeframe	2021-2022	Budget	APPROVED

FINAL FINANCIAL REPORT

Prepared on 26/Jul./2022

All figures are in Swiss Francs (CHF)

MDRBF016 - Burkina Faso - Population Movement in Tougan

Operating Timeframe: 01 déc. 2021 to 28 févr. 2022

I. Summary

Opening Balance	0
Funds & Other Income	314 063
DREF Allocations	314 063
Expenditure	-290 921
Closing Balance	23 142

II. Expenditure by planned operations / enabling approaches

Description	Budget	Expenditure	Variance
PO01 - Shelter and Basic Household Items	118 343	120 494	-2 151
PO02 - Livelihoods	68 151	65 998	2 153
PO03 - Multi-purpose Cash			0
PO04 - Health	19 383	7 474	11 909
PO05 - Water, Sanitation & Hygiene	64 002	65 343	-1 341
PO06 - Protection, Gender and Inclusion	1 534		1 534
PO07 - Education			0
PO08 - Migration			0
PO09 - Risk Reduction, Climate Adaptation and Recovery			0
PO10 - Community Engagement and Accountability			0
PO11 - Environmental Sustainability			0
Planned Operations Total	271 413	259 308	12 104
EA01 - Coordination and Partnerships	8 341	5 663	2 678
EA02 - Secretariat Services			0
EA03 - National Society Strengthening	34 309	25 949	8 360
Enabling Approaches Total	42 650	31 612	11 038
Grand Total	314 063	290 921	23 142

DREF Operation

Selected Parameters			
Reporting Timeframe	2021/12-2022/6	Operation	MDRBF016
Budget Timeframe	2021-2022	Budget	APPROVED

FINAL FINANCIAL REPORT

Prepared on 26/Jul./2022

All figures are in Swiss Francs (CHF)

MDRBF016 - Burkina Faso - Population Movement in Tougan

Operating Timeframe: 01 déc. 2021 to 28 févr. 2022

III. Expenditure by budget category & group

Description	Budget	Expenditure	Variance
Relief items, Construction, Supplies	237 424	224 519	12 905
Shelter - Relief	55 120	51 036	4 084
Water, Sanitation & Hygiene	49 304	47 425	1 879
Medical & First Aid	14 400	14 000	400
Teaching Materials	4 368	1 337	3 031
Other Supplies & Services	51 200	49 274	1 926
Cash Disbursement	63 032	61 447	1 585
Logistics, Transport & Storage	13 120	9 133	3 987
Distribution & Monitoring	4 720	1 545	3 175
Transport & Vehicles Costs	8 400	7 589	811
Personnel	21 055	19 713	1 342
National Society Staff	7 920	17 195	-9 275
Volunteers	13 135	2 518	10 617
Consultants & Professional Fees	896		896
Professional Fees	896		896
Workshops & Training	11 040	9 274	1 766
Workshops & Training	11 040	9 274	1 766
General Expenditure	11 360	10 526	834
Travel	5 520	3 599	1 921
Information & Public Relations	2 000	2 417	-417
Office Costs	960	1 348	-388
Communications	1 680	2 473	-793
Financial Charges	1 200	690	510
Operational Provisions	0		0
Operational Provisions	0		0
Indirect Costs	19 168	17 756	1 412
Programme & Services Support Recover	19 168	17 756	1 412
Grand Total	314 063	290 921	23 142