

Pakistan | Monsoon Floods Emergency



A PRCS volunteer verifying a community member coupon at a PRCS verification counter to receive relief aid she was previously registered for (Photo: Katie Hope, IFRC)

<p>Emergency appeal №: MDRPK023 Emergency appeal launched: 28/08/2022 Operational Strategy published: 06/09/2022</p>	<p>Glide №: FL-2022-000270-PAK</p>
<p>Operation update #2 Date of issue: 04/10/2022</p>	<p>Timeframe covered by this update: From 23/07/2022 to 22/09/2022</p>
<p>Operation timeframe: 16 months (23/07/2022 - 31/12/2023)</p>	<p>Number of people being assisted: 324,040</p>
<p>Funding requirements (CHF): CHF 25 million through the IFRC Emergency Appeal CHF 26.5 million Federation-wide</p>	<p>DREF amount initially allocated: CHF 1 million</p>

To date, this Emergency Appeal, which seeks CHF 25,000,000, is 25 per cent funded. Further funding contributions are needed to enable Pakistan Red Crescent Society, with the support of the IFRC, to continue with the relief efforts and provide humanitarian assistance to the people affected by floods.

A. SITUATION ANALYSIS

Description of the crisis

Pakistan is facing its worst flooding in decades, declaring 80 out of the 160 districts in the country as calamity hit, with more than 33 million people impacted. The widespread flash floods continue to trigger waves of displacement in flood-affected districts where a surge of flood-borne diseases and food inaccessibility is on an uprise. According to National Disaster Management Authority (NDMA), over 1,695 people including 630 children have lost their lives and at least 12,865 people are injured. Over 750,000 houses are fully destroyed, 1,277,861 partially destroyed and more than 1 million livestock killed as of 2 October 2022¹.

While many districts are experiencing stagnant or slow receding water, floodwaters continue to rise in nine districts of Sindh, two districts of Balochistan and one district in Punjab, further inflating the already 7.6 million people estimated to have been displaced due to the floods². Authorities have warned that the water can take up to six months to completely recede with glimpses of the sheer magnitude of the damages becoming more visible and apparent as it continues. More than 13,254 km of road, acres of land and 440 bridges have been reported damaged with 1,460 health facilities, 23,900 schools and many water systems possibly rendered unfunctional. According to Red Cross Red Crescent rapid needs analysis, preliminary data indicates high levels of damage to household, communal and institutional water and sanitation infrastructure. Health service delivery and immunization services are disrupted with the country experiencing a shortage of medicine availability and an increase in disease outbreaks inclusive of Cholera, dengue and measles.

Livelihoods are heavily impacted in the absence of income with many affected are dependent on their land crops and livestock to feed their families. Lack of access to basic necessities such as healthcare and clean water exacerbates the health conditions of all the affected individuals. The floods have compounded the pre-existing economic crisis Pakistan was already facing affecting the entire country. Food prices have drastically been inflated due to the disruption to the supply chain, with the country having to depend on its limited stocks and imports to meet its food demand.

Summary of response

Overview of the host National Society and ongoing response

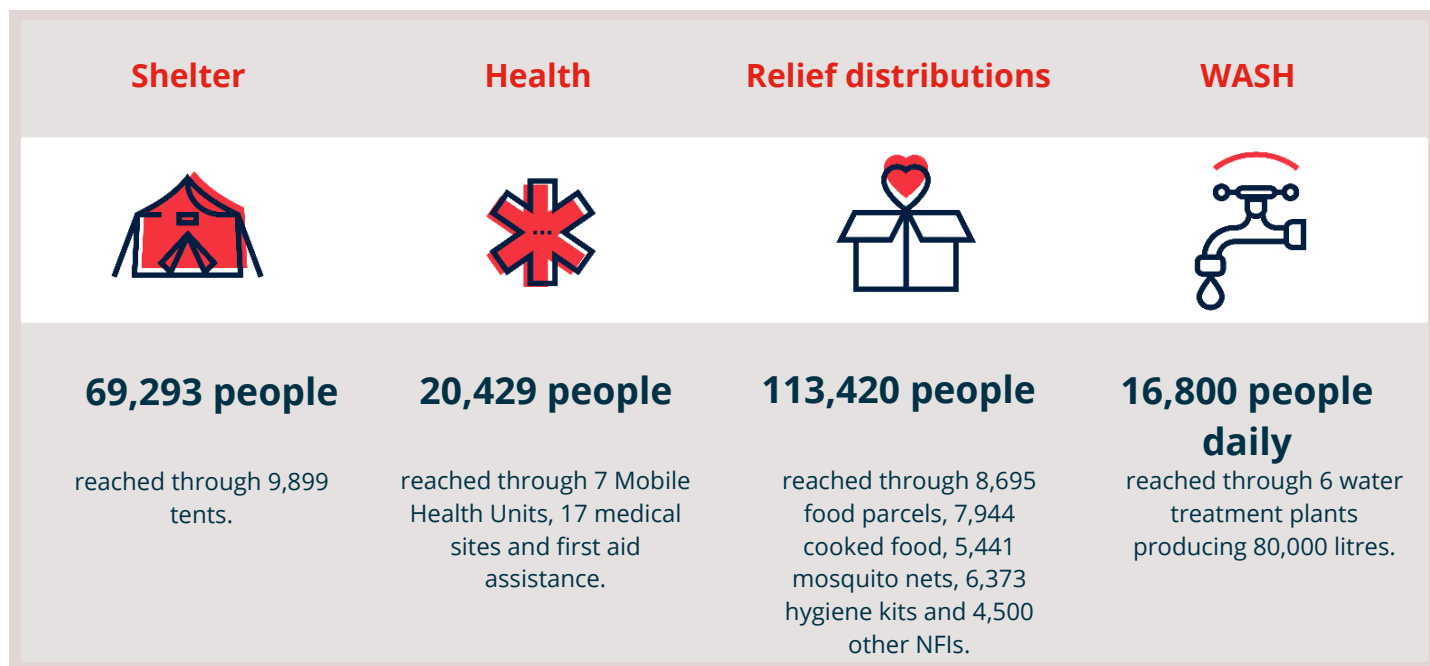
Pakistan Red Crescent Society (PRCS) within its first responder capacity, has been responding to the ongoing floods since its onset in July. The National Society's nationwide network of branches, diverse group of disaster response volunteers and good rapport and acceptance with the people, gives PRCS a unique opportunity to address the challenges faced in the country and grant it access to regions other stakeholders do not have, responding respond to immediate needs and building community resilience.

PRCS is also engaged in the government's coordination mechanism to ensure PRCS response operation is developed in coordination with the government, complementing and contributing directly to the government's response plan led by the NDMA. The Red Cross Red Crescent strategy is to focus on lifesaving food, water, medical, and shelter assistance through community-based volunteers, national and international resources, and close coordination with authorities and other partners to cover the wider humanitarian needs of all affected people.

¹<http://cms.ndma.gov.pk/storage/app/public/situation-reports/October2022/gQk402pzZNtTKt5pnVj1.pdf>

² Based on preliminary data available, with high possibility of the number increasing once more data is available.

IFRC initially released CHF 1 million from its Disaster Response Emergency Funds (DREF) to PRCS in July to respond to badly affected districts in Sindh, Balochistan, KP and Punjab. As the situation continued to aggravate, IFRC launched an IFRC Secretariat emergency appeal of CHF 25 million to expand PRCS's response to reach over 320,000 of the most affected and vulnerable people in 34 flood-hit districts across the country over the period of 16 months. Additionally, PRCS response is being implemented using a Federation-wide approach with in-country partners (Turkish Red Crescent (TRCS), German Red Cross (GRC), and Norwegian Red Cross (NorCross), and other national societies also directly supporting the PRCS's response bilaterally outside of the IFRC Secretariat emergency appeal. The Federation-wide approach continues to facilitate coordinated assistance with others, effectively utilizing resources and existing expertise to ensure critical gaps are covered when millions are requiring aid.



PRCS through **Federation-wide support** has reached **219,942** people through immediate response assistance across districts in Sindh, Balochistan, KP, Punjab and GB. Prioritizing relief assistance to vulnerable households in the most flood-affected districts, PRCS distributed 9,899 families with tents in Sindh, Balochistan and KP, 8,695 families with food parcels for the duration of one month, 7,944 individuals with hot meals, 6,373 families with hygiene kits, 5,441 families with mosquito nets and 4,500 families with other household items consisting of jerry cans, buckets, mattresses and blankets.

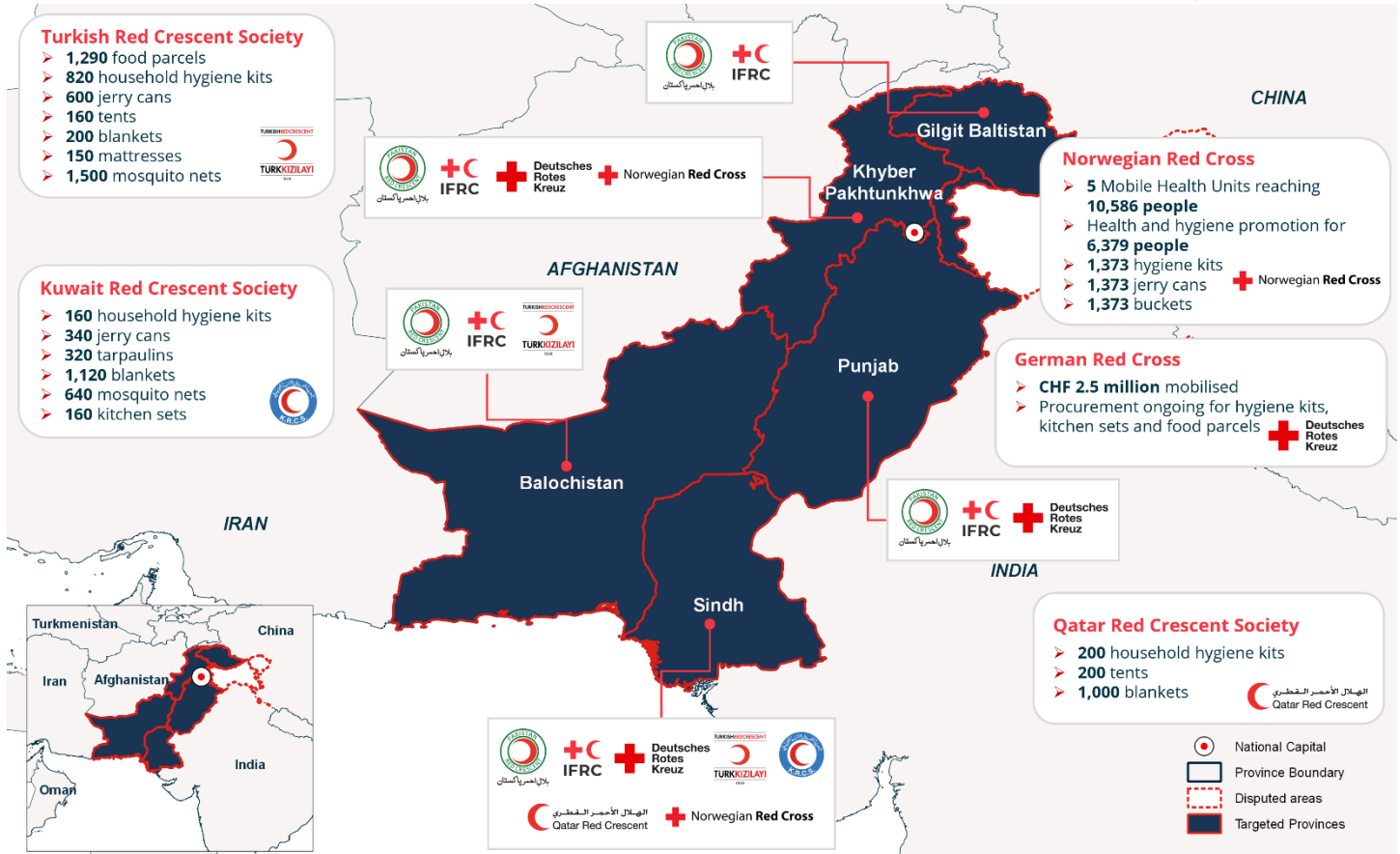
PRCS also expanded its assistance to address accessibility challenges being experienced by the flood-affected population to access basic healthcare services and clean water in Sindh, Balochistan and KP. Primary health care assistance was provided to 20,429 people through seven PRCS mobile health units (MHUs), 14 medical sites and first aid services in hard-to-reach areas. PRCS also increased access to clean water by deploying six water treatment plants in Sindh, Balochistan and KP, producing 4 million liters of water to date, reaching an average of 2,400 families per day.

IFRC has deployed 20 Rapid Response staff personnel and 30 local surge personnel ensuring the availability of all the technical expertise to support PRCS in response operation implementation. Additionally, four Emergency Response Units (ERUs) have been deployed to the IFRC field hub in Sindh consisting of Relief, Logistics, Water Sanitation and Hygiene (WASH) ERU M15 and WASH Water Supply Rehabilitation (WSR).

Pakistan Monsoon Floods

Federation wide partner presence and response

As of 23 September 2022



The maps used do not imply the expression of any opinion on the part of the International Federation of the Red Cross and Red Crescent Societies or National Societies concerning the legal status of territory or its authorities. Map data sources: OCHA, ICRC, IFRC.

In-country partners GRC, NorCross, and TRCS and remote bilateral partners Kuwait Red Crescent and Qatar Red Crescent are actively supporting the operations with a focus on the provision of healthcare services, food and relief assistance to address the most pressing needs³. NorCross is planning to support the distribution of an additional 10,100 household items bundles in Sindh with 5,000 bundles planned to be distributed in the coming week with the support of IFRC Relief ERU. TRCS is in the process of supporting the distribution of 2,030 household hygiene kits, 2,500 food parcels, 540 tents, 1,300 blankets, 185 mattresses and 310 other household items. GRC plans to support 41,300 flood-affected families in 14 districts of Sindh, KP and Punjab through 730 hygiene promotion sessions and the distribution of 23,300 household hygiene kits, 13,500 kitchen sets, and 18,000 food parcels.

In addition, Red Cross Society of China, Iranian Red Crescent, Canadian Red Cross, British Red Cross, Finnish Red Cross, Spanish Red Cross, Danish Red Cross and Italian Red Cross are supporting remotely in the areas of HR and household items.

Needs analysis

The immediate priority needs for the flood-affected communities are access to emergency shelter, food, healthcare in particular access to medicines and prevention of outbreaks, safe drinking water, sanitation and hygiene. Many families continue to reside in makeshift shelters as they no longer have homes to return to. As the winter season

³ As reflected in the infographic Federation wide partner presence and response.

approaches, the makeshift and damaged shelters will no longer be able to protect the displaced from the harsh weather conditions. Food insecurity is increasing the prevalence of Global Acute Malnutrition (GAM) and Severe Acute Malnutrition (SAM) in Balochistan and Sindh, with the situation expected to further deteriorate well past the emergency threshold⁴.

Poor living conditions and stagnant water continue to provide breeding grounds for bacteria and parasites, increasing cases of typhoid, acute watery diarrhea, hepatitis A, malaria and dengue in communities and camps. Cholera outbreaks have been confirmed in multiple districts in the country, rapidly spreading among flood-affected populations, especially children. Clean water and proper healthcare assistance are sparsely available to the majority of the affected individuals with the situation worse for people residing further in communities and away from the roads. The country is at risk of a health crisis if new outbreaks continue to be reported as progressively with no access to proper healthcare assistance. In the absence of protection systems set in place, women and children are also further exposed to risks of sexual exploitation and abuse, and child marriages. Existing referral pathways for child protection services continue to be limited and/or nonexistent in many of the affected districts to combat the growing needs⁵.

Pakistan hosts approximately 1.3 million registered Afghan refugees out of which an estimated 800,000 are hosted in more than 45 calamity-hit districts out of 80 affected locations⁶. Four of the worst-hit districts in Balochistan, Khyber Pakhtunkhwa and Sindh provinces host the highest number of refugees who already struggled to access basic necessities prior to the floods which have only further been exacerbated.

IFRC has assembled an assessment cell coordinating Federation-wide participation in the interagency cross-sectoral detailed assessments planned with other humanitarian agencies inclusive of UN agencies in Pakistan. The assessment cell is focusing on analyzing primary data to provide information for operational decisions while preparing to support the National Society with primary needs assessment integration. The interagency cross-sectoral assessment led by NDMA has already been conducted in Balochistan. Assessments in Sindh and KP are in the process of being conducted.

Operational risk assessment

The operating environment risk assessment continues to remain the same since the publication of the Operational Strategy. However, additional risks are expected to be identified as the floodwaters continue to recede and damages and needs on the ground become clearer. IFRC has carried out a security assessment focusing on Sindh province, identifying Sukkur and Larkana districts as the base for the IFRC field hub. IFRC has identified the minimum-security requirements for operating in the area and is in process of jointly mapping out the province with PRCS using a two-zone approach to best utilize the resources at hand.

Additionally, IFRC is undertaking operational procurements and seconding technical sectoral personnel to PRCS to alleviate pressures on the National Society staff, help fill the gaps and mitigate delays in planned interventions.

⁴ <https://reliefweb.int/attachments/5e21f692-caf1-4bf0-8791-0f216faf6e80/Pakistan%20Floods%20Response%20SitRep%206%20-%2016%20September%202022.pdf>

⁵ <https://reliefweb.int/attachments/5e21f692-caf1-4bf0-8791-0f216faf6e80/Pakistan%20Floods%20Response%20SitRep%206%20-%2016%20September%202022.pdf>

⁶ <https://www.unhcr.org/news/briefing/2022/9/63297ee24/unhcr-humanitarian-needs-remain-acute-displaced-flood-hit-areas-pakistan.html>

B. OPERATIONAL STRATEGY

Update on the strategy


The current multifaceted [Operational Strategy](#)⁷ supported by IFRC was developed using a three-phase approach: relief/response, early recovery, and recovery. The 16-month strategy aims to address both immediate needs as well as resilience-building of the affected population directly reaching 324,040 people. Additionally, the strategy also focuses on further strengthening the response capacity and readiness of PRCS and the affected communities.

With the situation rapidly evolving on the ground as the water has slowly started to recede in some parts of the country, the intensity of the damages and needs present are slowly becoming clearer. Though the information available remains very limited, a drastic need to amplify health and shelter assistance is clearly visible. The Operational Strategy is planned to be revised in the coming week to reflect these needs, with additional revisions to take place once more detailed needs analysis has been completed. IFRC is coordinating with the membership to work together to ensure maximum utilization of resources available in the most effective manner. The revised Operational Strategy will reflect a Federation-wide plan, integrating all membership efforts under one plan led by PRCS, ensuring complementarity and collaboration.

Additionally, IFRC Secretariat and the in-country PNSs are working in a Federation-wide approach, whereby the best-positioned member, with proximity to affected communities and PRCS branches, will lead the implementation support to PRCS in that geographical area. IFRC is providing leadership in standardization and consistency in services. Alongside PRCS, IFRC is focusing initially on Sindh, where ERUs and technical staff are present. Collaborations are ongoing with TRCS in Balochistan, and GRC and NorCross in KP, while all partners are supporting Sindh.

C. DETAILED OPERATIONAL REPORT

STRATEGIC SECTORS OF INTERVENTION

 Shelter, Housing and Settlements		Female > 18: 20,683	Female < 18: 0
		Male > 18: 21,527	Male < 18: 0
Objective:	<i>The National Society will respond in a principled manner to the emergency shelter needs of flood-affected people by providing emergency shelter items and winterization kits to affected families.</i>		
Key indicators:	Indicator	Actual	Target
	<i># of households targeted for the provision of winterization kit in the response period</i> ⁸	0	16,000

⁷ Operational Strategy which was published on 6 September 2022.

⁸ Indicator has been modified to measure households instead of people linked with the number of items distributed.

of households targeted for shelter assistance in the response period⁹

6,030

16,000

PRCS distributed 6,030 family tents to the families whose houses are classified as unlivable due to the damages and who had not received any shelter assistance from the government and/or any other organization in districts of Sindh, Balochistan, KP and GB provinces. With floodwater slowly receding, PRCS is reassessing its shelter strategy to further increase its reach through shelter assistance through the provision of additional tents as well as tarpaulins and shelter toolkits to the flood-affected population as people are starting to return back to their homes. With winter fast approaching, PRCS is also aiming to provide winterization kits consisting of warm clothing items to equip families in specific districts of Sindh, Balochistan, KP and GB in October/November against the harsh winter season ahead.

The first rotation of the IFRC Relief ERU is currently based in the IFRC field hub in Sindh, closely working with PRCS Sindh branch. The ERU is in the process of supporting PRCS in further strengthening and digitising their existing relief distribution processes, ensuring the most effective and efficient approaches are being used, while further classifying ways to reach the most vulnerable population. Piloting in Sindh, the Relief ERU will be training PRCS relief distribution teams in the field on the revised registration forms further tailored to ensure a more inclusive and targeted approach to the vulnerable groups in the targeted communities, distribution methodologies, feedback mechanisms and post-distribution monitoring. The same will be replicated for Balochistan and KP provinces to ensure a more standardized and unified approach to relief assistance in the most affected provinces and streamline targeted assistance to the most vulnerable among the affected population.



A woman transporting the relief assistance provided to her back home in Larkana, Sindh. (Photo: Katie Hope, IFRC)

⁹ Indicator has been modified to measure households instead of people linked with the number of items distributed.



Livelihoods

Female > 18: 0

Female < 18: 0

Male > 18: 0

Male < 18: 0

Objective:

To address the long-term recovery needs of the flood-affected population through the provision of livestock, business support grants, and agriculture inputs.

Key indicators:

Indicator

Actual

Target

of targeted households were provided livestock as source of livelihood.

0

10,000

of household livelihood from agriculture restored through the provision of material or cash support.

0

4,400

of household's small-scale community-based business was restored through capacity building and provision of business grants.

0

2,000

PRCS is currently focusing on immediate response and relief activities. The planned livelihood activities will be implemented in the recovery phase of the operation.



Multi-purpose Cash

Female > 18: 0

Female < 18: 0

Male > 18: 0

Male < 18: 0

Objective:

To address the immediate basic needs and contribute to increased purchasing power of targeted vulnerable households through the provision of multipurpose cash grants.

Key indicators:

Indicator

Actual

Target

of households who successfully received cash after being identified and processed for cash assistance.

0

30,000

PRCS registered 2,500 households at the start of the operation with the aim to provide unconditional cash grants of PKR 16,000 (CHF 73) calculated based on the PRCS Monsoon Contingency Plan in place. However, so far, no cash assistance has been provided to any of the registered households with the registration of additional households also halted. PRCS is in the process of re-evaluating its cash assistance strategy for the operation based on the growing needs on the ground and accessibility, aiming to provide the most beneficial and convenient form of assistance within the response phase.



Health & Care

(Mental Health and psychosocial support / Community Health / Medical Services)

Female > 18:
4,819

Female < 18:
1,127

Male > 18:
4,711

Male < 18: 1,172

Objective:

To reduce immediate morbidity and mortality, and to prepare for, prevent, and rapidly contain emerging health risks in targeted districts across four provinces in flood-affected communities building their long-term resilience.

Key indicators:

Indicator

Actual

Target

of staff and volunteers trained on Psychological First Aid

0

180

of people provided with Psychological First Aid¹⁰

0

2,500

of volunteers and staff provided with FA personal pouches

0

800

of consultations through the NS's medical services or different clinical ERU configurations of the RCRC Movement.

5,529

324,040

of people reached with antenatal services in emergencies

0

3,880

of LLINs (long-lasting insecticide-treated nets) distributed

900

8,000

of BHUS rehabilitated through solarization

0

5

PRCS has deployed two Mobile Health Units (MHUs) in Jhal Magsi and Jaffarabad districts in Balochistan, reaching 5,529 individuals (1,732 females, 1,498 males, 2,299 children) with primary healthcare assistance in flood-affected communities from August onwards. With health needs rapidly growing and access to functional healthcare facilities continuing to remain scarce, PRCS and IFRC have mapped out the deployment of an additional 28 MHUs across the most affected districts in Sindh, Balochistan, KP and Punjab. Eight out of the planned 28 MHUs are already in process of being operationalized with recruitment currently ongoing. Staff and volunteers are planned to be trained in psychological first aid, epidemic control and public health in emergencies to be further applied in the field through service provision.

IFRC has redirected medicine supply from existing programme stocks to meet the growing healthcare demand present in the flood-affected communities. With no alternative present, the affected population is very dependent on such mobile services to provide basic healthcare assistance inclusive medicine. With cases of water and vector-borne diseases escalating, PRCS has to ensure a sufficient supply of medicine is available to all MHUs. ICRC is supporting the immediate local procurement of medicines to meet the demand, with IFRC planning long-term procurement to support the operationalization of the MHUs for three months.

PRCS activated the Health Technical Committee (HTC) in September in an effort to streamline the health response to the floods, standardization of the services being provided, map all interventions to further avoid duplications, and ensure a complementarity approach. The platform is also used to discuss the health trends, especially around current epidemics inclusive of cholera, measles, malaria and dengue, and the strategy to address them while

¹⁰ Indicator has been added to highlight the reach of psychological first aid assistance through the trained volunteers under the response.

ensuring the duty of care of staff and volunteers. IFRC is also in discussions on the possible deployment of Health ERU to address the growing concerns around cholera with many districts declaring outbreaks.

Additionally, PRCS is working to mitigate the spread of vector-borne diseases with the distribution of 900 long-lasting insecticide-treated nets (LLINs) to flood-affected households in Sindh province where malaria and dengue fevers were already endemic to the area, with the stagnant water further exacerbating the situation.



Water, Sanitation and Hygiene

Female > 18: 7,922	Female < 18: 3,395
Male > 18: 8,246	Male < 18: 3,533

Objective: *Ensure safe drinking water, proper sanitation, and adequate hygiene awareness of the communities during relief and recovery phases of the Emergency Operation, through community and organizational interventions*

Key indicators:	Indicator	Actual	Target
	<i># of liters of safe water distributed through RCRC emergency water supply (cumulative)</i>	4 million liters	120,000/day for 2 months
	<i># of household latrines constructed</i>	0	500
	<i># of households provided with hygiene kits</i>	900	4,000
	<i># of staff and volunteers trained in emergency WASH</i>	20	500

PRCS has deployed six water treatment plants in Sindh (Dadu and Larkana), Balochistan (Jhal Magsi and Jaffarabad) and KP (Tank and Karak) benefiting 2,400 families (16,800 individuals) daily through four million liters (80,000 liters per day) of potable water over 50 days. To meet the growing need and demand for clean water in overburdened camps and communities, an additional six water treatment plants are in the process of being deployed in Sindh to provide immediate water supply to an additional 2,400 families daily for 60 days.

IFRC conducted a WASH training for 20 (male) PRCS volunteers from national and provincial headquarters of KP and Sindh on emergency water supply and water treatment plants; 10 of the trained PRCS volunteers are deployed to support the operational water treatment plants in KP and Sindh.

PRCS has reached 6,300 people (3,087 females, 3,213 males) through 900 household hygiene kits distributed in two districts of KP (Tank and Karak). With the partners inclusive of NorCross, TRCS and GRC already prioritizing hygiene kit distribution within their planned support, PRCS is in the process of mapping all partners' support prior to further distribution. PRCS will jointly work with IFRC Relief ERU to identify the most vulnerable households to be provided assistance in the target districts. Volunteers are also disseminating key health and hygiene messages at water distribution points and hygiene kit distribution sites to promote better hygiene practices.

PRCS jointly with IFRC is planning to conduct a WASH needs assessment in Sindh to further develop and scale up WASH interventions already planned in the response phase but also to establish the way forward for transitioning into early recovery. IFRC M15 WASH ERU has been deployed to Sindh and will further build on the assessments to support PRCS to operationalize existing water supply modules, and provide technical assistance to increase PRCS's capacity in the planned WASH interventions. WSR will be arriving in the field in the coming week and will also be

participating in the planned assessment. IFRC and PRCS are in contact with the WASH technical group led by UNICEF, where the interagency strategy is defined, while the WASH cluster is activated.



Protection, Gender and Inclusion

Female > 18: 0 Female < 18: 0

Male > 18: 0 Male < 18: 0

Objective:

The response will be implemented by applying a PGI lens ensuring that support is provided to the most vulnerable highlighted under the PGI analysis focusing on their dignity, accessibility, participation and safety, through mainstreaming PGI and PGI-focused actions.

The awareness of communities will be enhanced as to protection concerns and two-way referral pathways for Sexual and Gender-Based Violence (SGBV) survivors while child protection will be ensured for a safe and secure environment for affected and vulnerable communities.

Key indicators:

Indicator	Actual	Target
# of sectoral or PGI assessments conducted using the PGI Minimum Standards	0	10
# of staff and volunteers oriented on implementing the PGI Minimum Standards ¹¹	0	450
# of referrals made (SGBV, Child Protection or other) via a common referral pathway	0	5

PRCS and IFRC are in the process of developing a PGI framework specific to the flood operation with the support and expertise from the IFRC Asia Pacific Regional Office. The framework will allow for better integration of PGI in the operation in addition to the implementation and adherence to IFRC's Minimum Standards for PGI in emergencies and the Dignity Access Participation and Safety (DAPS) framework. The PGI framework will also ensure the operation is acknowledging, addressing and minimizing the growing protection concerns in the flood-affected communities directly through PRCS interventions as well as establishing two-way referral pathways with organizations and government agencies providing specialized services outside of PRCS expertise.

Integrated sectoral needs assessments are jointly being coordinated with other in-country agencies such as UN agencies (UNHCR, UNFPA, UNICEF), providing some foundational PGI vulnerability analysis. Though information received continues to be limited, the assessments will allow for a more tailored approach for planned interventions to ensure access and inclusion of the marginalized population groups and most vulnerable present in the targeted districts.

PRCS is also in the process of establishing its own standard operating procedures to further solidify their internal processes and systems towards ensuring safeguarding measures are in place and being followed within the operation.



Community Engagement and Accountability

¹¹ Indicator has been revised to be more specific as to who the target is and what the activity is.


Objective:	<i>Community engagement and accountability will support the response to have a thorough understanding of community needs, priorities, and context, while ensuring ways of working collaboratively with people and communities by integrating meaningful community participation, timely, open, and honest communication, and mechanisms to listen to and act on feedback throughout the response.</i>		
-------------------	---	--	--

Key indicators:	Indicator	Actual	Target
	<i># of feedbacks/comments/complaints received through feedback mechanisms¹²</i>	42	1,600
	<i># of staff, volunteers and leadership trained on community engagement and accountability (disaggregated by staff / volunteers / sex)</i>	0	25

PRCS continues to collect feedback from the communities through their helpline numbers at National Headquarters (NHQ) and Provincial Headquarters (PHQs) and on-ground staff and volunteers as their main two-way community feedback mechanisms. PRCS NHQ helpline number has received 42 calls (2 females, 40 males) already, mainly asking for more information on the available assistance PRCS is provided and how they can they be eligible to receive it. PRCS PHQ helplines now have a dedicated volunteer attending to calls to bridge the initial challenges of the unavailability to receive the calls being made.

PRCS is also collecting feedback at distribution sites through exit surveys of individuals provided assistance through PRCS volunteers. The distribution teams further discuss the feedback received in their de-briefs, ensuring to further incorporate them for the next distribution planned as well as further communicate it back to the PHQs to incorporate for future distributions as well.

PRCS and IFRC are in the process of re-evaluating the existing CEA mechanisms in place with IFRC Asia Pacific Regional Office extending support in the development of a CEA framework specific to the flood operation and its sent activities across all three phases.

	Risk Reduction, climate adaptation and Recovery	Female > 18: 0	Female < 18: 0
		Male > 18: 0	Male < 18: 0

Objective:	<i>The response will be implemented by applying a PGI lens ensuring that support is provided to the most vulnerable highlighted under the PGI analysis focusing on their dignity, accessibility, participation and safety, through mainstreaming PGI and PGI-focused actions.</i>		
	<i>The awareness of communities will be enhanced as to protection concerns and two-way referral pathways for Sexual and Gender-Based Violence (SGBV) survivors while child protection will be ensured for a safe and secure environment for affected and vulnerable communities.</i>		

Key indicators:	Indicator	Actual	Target
	<i># of people reached by RCRC through Disaster Risk Reduction (DRR) and climate change adaptation activities</i>	0	150,000

¹² Indicator has been revised to cover a wider scope and coverage of CEA instead of only focusing on complaints received.

# of people trained in DRR related areas (vulnerability and capacity assessment or climate change adaptation, first aid, contingency planning, or emergency response)	0	150,500
# of communities that have formed community committees with the support of NSs, representing community people from all walks of life and working with specific roles related to disaster preparedness and risk reduction	0	80
# of communities that have developed and implemented the community plan of action for DRR with RCRC support	0	80
# of people reached by RCRC through disaster risk reduction Public Awareness Messaging and Public Education (PAPE) campaigns	0	150,000

PRCS is currently focusing on immediate response and relief activities. The planned risk reduction, climate adaptation and recovery activities will be implemented in the early recovery and recovery phase of the operation.

Enabling approaches



National Society Strengthening

Objective:	<i>To strengthen and reinforce PRCS structures at the provincial and district levels, and the National Society volunteer base, while improving service delivery and PRCS footprints at the community level.</i>		
Key indicators:	Indicator	Actual	Target
	<i># of strategically located branches in the flood-affected regions offered capacity-building support</i>	16	26
	<i># of new branches/office opened in the flood-affected areas that increase the outreach of the NS</i>	0	10
	<i># of volunteers recruited/registered for supporting the NS response</i>	338	1,750
	<i># of volunteers involved in the response operation that have increased their skills in response and management of operations</i>	338	2,000
	<i># of IFRC monitoring and support missions</i>	0	20
	<i># of volunteers provided with equipment for protection, safety and support (e.g., PSS) appropriate to the emergency</i>	338	2,000

PRCS is supporting the ongoing flood response through its NHQ, PHQ, and district branches across Pakistan. The overall PRCS operations is providing assistance across 45 districts inclusive of all RCRC partners, external support and own PRCS initiatives. As part of the IFRC emergency appeal, the plan is to cover 34 districts; out of the planned 34 districts¹³ under the Emergency Appeal, PRCS has operationalized assistance in approximately 25 districts with planning on going for future interventions.



PRCS volunteers and Relief ERU member reviewing distribution list at the midway point of the distribution to reassess strategy. (Photo: Katie Hope, IFRC)

To improve and strengthen the response further, the PRCS NHQ teams are regularly deployed in the field and are supporting the field teams in different provinces of Pakistan. Local volunteers from the community have also been engaged in the response and have been oriented on emergency response, Code of Conduct and other topics related to disaster management. PRCS and IFRC are also jointly in the process of developing an action plan for preparedness for effective response (PER) common approach to help further strengthen the National Society and its capacities.

So far 338 volunteers (128 female, 210 male) have been engaged in the response and around 920 volunteers are on standby to support the operation. As part of the flood response, PRCS has registered a total of 3,244 volunteers to increase the pool of volunteers. As the operation evolves, additional capacity-building opportunities will be provided to the volunteers to strengthen the volunteer force and enable them to better respond to the needs of the communities. The PRCS long-term presence in the target communities will be clear in the coming weeks and a proper strategy will be developed for integrating National Society Development (NSD) in the ongoing operation and for long-term NSD support to strengthen PRCS capacities. PRCS is working on mapping out HR needs in pre-existing district branches and the new branches to be established in target districts where presence is limited. To

¹³ 10 in Sindh, 10 in Balochistan, 8 in Khyber Pakhtunkhwa, 5 in Punjab and 1 in Gilgit Baltistan

date, no new branch or office has been opened in the areas where PRCS operates and the hiring of positions under NSD has not been initiated.



Coordination and Partnerships

Objective:

Strengthening coordination within the IFRC membership and within the Movement to bring technical and operational complementarity and enhancing cooperation with external partners.

Key indicators:

Indicator

Actual

Target

of movement coordination meetings organized, where updates are provided to the Movement partners

15

16

Movement coordination mechanism is described and active

Yes

Yes

A movement coordination mechanism is in place and is being adapted based on the evolving situation and interests expressed. The coordination mechanism fosters effective coordination, collaboration and information sharing as well as provides a platform for joint planning and reporting on the floods operations in the country.

The partners have been invited to share their input for the revision of the Emergency Appeal and the Operational Strategy, where they can suggest and recommend modalities, which will be reflected in the revised Emergency Appeal and ultimately contribute to the improvement of the operation in the long run.

IFRC conducts daily coordination meetings at country office level with the in-country partners including ICRC to share planning, updates, and experiences from the operation. IFRC is also participating in PRCS movement coordination meetings helping to ensure a harmonized approach to implementation. Additionally at field level, IFRC teams inclusive of the ERUs deployed, on the ground are providing operational and administrative support to the partners.



Shelter Cluster Coordination

Objective:

Ensure active and close coordination with shelter actors to provide shelter assistance to those impacted.

Key indicators:

Indicator

Actual

Target

of Shelter Sector meetings attended by the IFRC relevant staff

3

10

of coordination meetings done with the shelter cluster members

2

12

of shelter workshops held

0

tbc

The shelter sectoral meetings have been initiated with the International Organization of Migration (IOM) taking lead in the three most affected provinces (KP, Balochistan and Sindh) and has established a provincial level coordination mechanism. IFRC and PRCS attended the first meeting held in Sindh.



Secretariat Services

Objective: *Enable effective international disaster management coordination, strengthen the PRCS log, HR, finance, PMER, and information management for a better response in the current disaster and in the longer-term to benefit the National Society with enhanced support for its future operations.*

Key indicators:	Indicator	Actual	Target
	<i>% of financial reporting respecting IFRC procedures</i>	0	100
	<i>% of operational staff for IFRC receive a security briefing</i>	50	100
	<i># of volunteers involved in response who are insured</i>	338	400
	<i>Logistics department provides constant support to the National Society's logistics unit for replenishment and other procurements</i>	Yes	Yes
	<i># of finance staff receiving financial reporting training</i>	0	26
	<i>#of monitoring visits by PRCS/IFRC Programme/PMER staff throughout the response operation</i>	5	22
	<i># of evaluations/reviews conducted for the emergency response</i>	0	2

IFRC has not yet processed any financial reports, however, will ensure all reports will be adhering to IFRC financial procedures and guidelines. As PRCS and IFRC revised HR structures are in the process of being operationalized, training for PRCS staff in the targeted provincial and district branches will be conducted in the coming month on IFRC financial procedures and standards to ensure understanding and compliance. Additionally, PRCS and IFRC will develop and follow a joint monitoring plan to ensure frequent monitoring is taking place by programmes and PMER staff as well as finance. Besides, staff are being briefed on the current security situation both in the Islamabad office and the field hub in Sindh.

IFRC updated its Mobilization Table for operation's in-kind needs seeking assistance worth CHF 9.2 million. IFRC has engaged a procurement officer to support the operation procurements and an ERU Logistics to support managing the influx of internationally procured federation goods for distribution. The ERU logistics has already been coordinating with the PRCS warehouse in Haripur and Karachi on transportation, importation and storage of relief items. PRCS and IFRC have been able to clear import formalities quickly and deliver items to PRCS warehouses.

D. FUNDING

IFRC Secretariat coverage of the EA	Amount Raised (CHF)	Funding Gap (CHF)	Coverage %
Total hard pledges + in kind + soft pledges	6,216,173	18,783,827	25%
Federation-wide coverage	Amount Raised (CHF)	Funding Gap (CHF)	Coverage %
Total bilateral contributions to FW Appeal	2,969,945	-1,469,945	198%
Total FW contribution (bilateral + IFRC)	9,186,118	17,313,882	35%

The IFRC funding ask of CHF 25 million in this Appeal is currently 25 per cent covered up to 24 September, comprising hard and soft pledges and in-kind contributions. The Federation-wide funding ask (multilateral and bilateral contributions) is 35 per cent covered. Bilateral contributions alone stand at 198 per cent coverage in reference to a funding ask of CHF 1.5 million.

Contact information

For further information, specifically related to this operation please contact:

In the Pakistan Red Crescent Society

- Dr. Adeel Nawaz, Secretary General; email: sg@prcs.org.pk
- Mr. Obaid Ullah Khan, Joint Director Operations; email: npc@prcs.org.pk

In the IFRC Country Delegation for Pakistan

- Peter (Piwi) Ophoff, Head of Country Delegation; email: peter.ophoff@ifrc.org
- Chiran Livera, Head of Emergency Operations: HEOPS.Pakistan@ifrc.org

In the IFRC Asia Pacific Regional Office in Kuala Lumpur

- Alexander Matheou, Regional Director; email: alexander.matheou@ifrc.org
- Juja Kim, Deputy Regional Director; email: juja.kim@ifrc.org
- Joy Singhal, Head of HDCC unit; email: joy.singhal@ifrc.org
- Felipe Del Cid, Emergency Operations Manager; email: felipe.delcid@ifrc.org
- Eeva Warro, Operations Coordinator; email: opscoord.southasia@ifrc.org
- Siokkun Jang, Logistics Manager; email: siokkun.jang@ifrc.org
- Afrhill Rances, Communications Manager; email: afrhill.rances@ifrc.org

In IFRC Geneva

- Christina Duschl, Senior Officer Operations Coordination; email: christina.duschl@ifrc.org

For IFRC Resource Mobilization and Pledges support

- Sumitha Martin, Partnership and Resource Development; email: sumitha.martin@ifrc.org

For planning, monitoring, evaluation and reporting (PMER) enquiries

- Mursidi Unir, interim PMER Coordinator; email: mursidi.unir@ifrc.org

Reference documents



Click here for:

- [Link to IFRC Emergency Landing page](#)
- [Previous Appeals and updates](#)

How we work

All IFRC assistance seeks to adhere the **Code of Conduct** for the International Red Cross and Red Crescent Movement and Non-Governmental Organizations (NGO's) in Disaster Relief, the **Humanitarian Charter and Minimum Standards in Humanitarian Response (Sphere)** in delivering assistance to the most vulnerable, to **Principles of Humanitarian Action** and **IFRC policies and procedures**. The IFRC's vision is to inspire, encourage, facilitate and promote at all times all forms of humanitarian activities by National Societies, with a view to preventing and alleviating human suffering, and thereby contributing to the maintenance and promotion of human dignity and peace in the world.

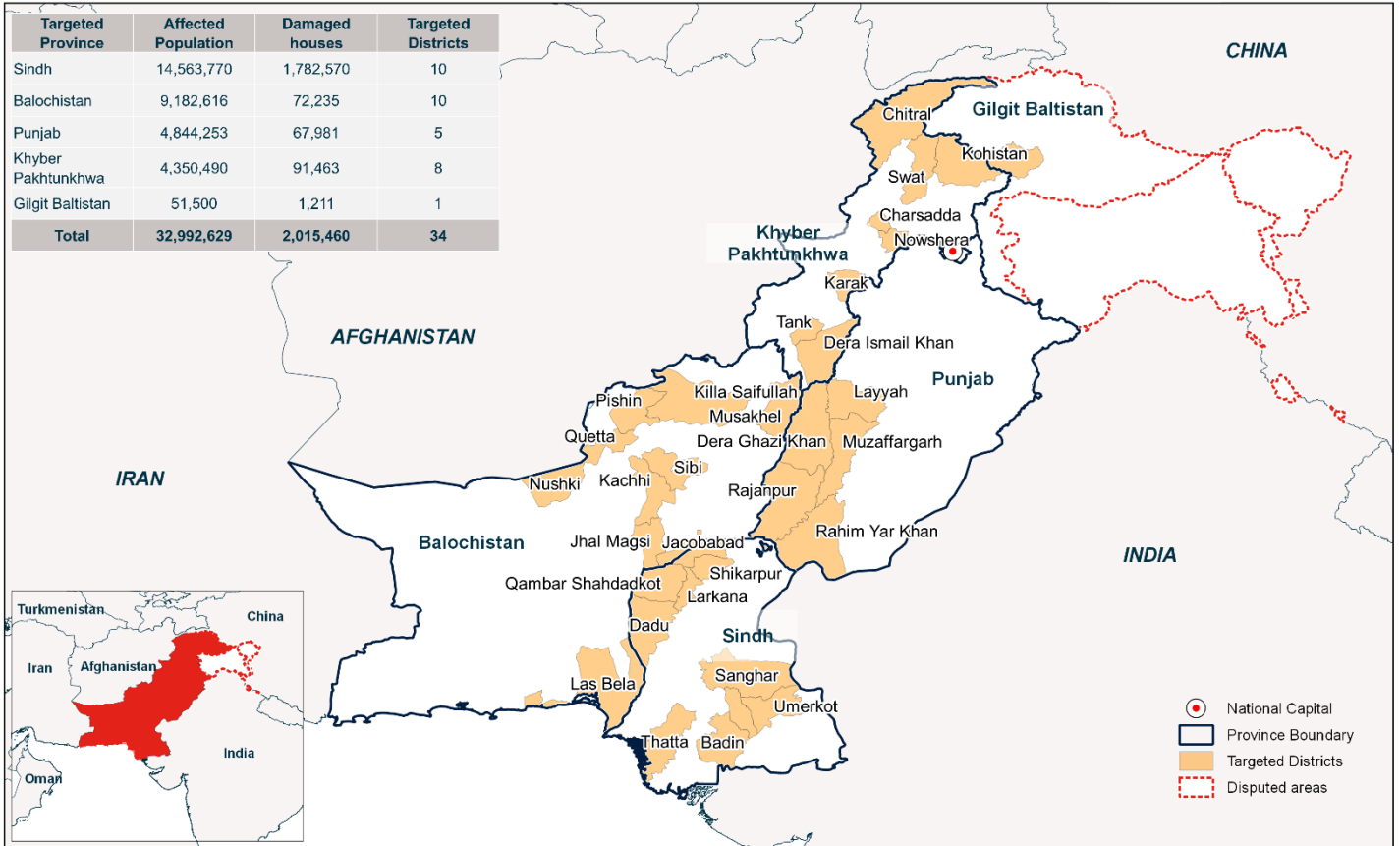
Pakistan: Monsoon Floods
IFRC Operation Targeted Districts

Updated: 23 September 2022



+CIFRC

بلال احمر پاکستان



The maps used do not imply the expression of any opinion on the part of the International Federation of the Red Cross and Red Crescent Societies or National Societies concerning the legal status of territory or its authorities. Map data sources: OCHA, ICRC, IFRC, NEMA.