

www.ifrc.org  
Saving lives,  
changing minds.

## Emergency Plan of Action (EPoA)

### Serbia: Flash floods



<b>DREF Operation</b>	<b>Operation n° MDRRS008</b> <b>Glide n° FF-2014-000059-SRB</b>
<b>Date of issue: 25 April 2014</b>	<b>Date of disaster 19 April 2014</b>
<b>Operation manager (responsible for this EPoA):</b> <b>Djula Losonc</b> <b>Disaster Management Coordinator,</b> <b>Red Cross of Serbia</b> <b>Tel +381 11 30 32 125</b> <b>Email <a href="mailto:djula@redcross.org.rs">djula@redcross.org.rs</a></b>	<b>Point of contact</b> <b>Vesna Milenovic</b> <b>Secretary General,</b> <b>Red Cross of Serbia</b> <b>Tel +381 11 30 32 125</b> <b>Email <a href="mailto:secretary@redcross.org.rs">secretary@redcross.org.rs</a></b>
<b>Alberto Monguzzi</b> <b>IFRC Europe Zone Disaster Management Coordinator</b> <b>Tel +36 1 8884 505 Email <a href="mailto:alberto.monguzzi@ifrc.org">alberto.monguzzi@ifrc.org</a></b>	
<b>Operation start date: 19 April 2014</b>	<b>Expected timeframe: 4 months</b>
<b>Overall operation budget: CHF 48,877</b>	
<b>Number of people affected: 3,000</b>	<b>Number of people to be assisted: 1,000</b>
<b>Host National Society presence (n° of volunteers, staff, branches): Red Cross of Serbia</b> <b>With 140 volunteers and seven HQ staff members</b>	
<b>Red Cross Red Crescent Movement partners actively involved in the operation: IFRC Europe Zone Office</b>	
<b>Other partner organizations actively involved in the operation:</b> <b>Emergency Management of the Ministry of Interior, members of the Municipal Emergency Response headquarters (municipal emergency services)</b>	

## A. Situation analysis

### Description of the disaster

From 16 to 17 April 2014 intense rainfalls followed with moderate snowfalls at higher altitude affected the western, eastern and southern parts of Serbia resulting in power losses and, in some places, traffic interruptions due to the collapsed road infrastructure in several villages. Starting from 18 April, the temperatures increased and caused the snow to melt rapidly in some lower areas. That had an impact on the river levels, with some smaller rivers and their creeks spilling over settlements in places close to the river beds. The situation was the most critical in the municipalities of Lučani and Kuršumljija. In Lučani, around 50 families were endangered by the increasing levels of river Bjelica, and one of the roads leading to Lučani was disconnected because of floods. On 19 April, conditions got worse and an emergency situation has been declared in a few municipalities as the river levels grew above the normal defense levels. Presently, the most serious situation is in Prokuplje, Zaječar, Žitradja, Kuršumljija and Doljevac municipalities, where emergency evacuation took place in the lower parts where people were in danger. The situation remains critical as most of these municipalities are left without clean drinking water, since the water wells and the city water supply network are damaged.

So far, 11 municipalities have declared a state of emergency but more are in danger as the weather conditions in next couple of days will lead to fast snow melting and more rainfalls which will in return have an effect on the water levels on the rivers and on the people living in the nearby communities. Several landslides have occurred but luckily not affected any households at this moment.

## Summary of the current response

### Overview of the Host National Society

The Red Cross of Serbia has a great experience in mobilizing volunteers in disasters, assisting people in need, implementing relief distributions, organizing basic disaster response and first aid trainings for volunteers. Each Red Cross branch has a disaster response team with the wide range of activities including water rescue teams that are able to assist in emergency evacuations. The National Society is maintaining a solid disaster response stock which enables its DM department to intervene during the first hours of any disaster. Red Cross of Serbia branch secretaries are members of the local emergency headquarters and are involved in the coordination and decision making processes. The Red Cross of Serbia also has a mobile deployable technical team which is able to assist people during and after floods with water pumping and wall dehumidification.

A national Red Cross team for field assessment and coordination has been dispatched to the scene and have carried out a rapid need assessment in all the affected areas. The water search and rescue team of the Red Cross of Serbia has also been alerted. The situation remains critical in all parts of Serbia as more rain is expected to fall in the next 36-48 hours.

The Field Assessment and Coordination (FAC) team of the Red Cross of Serbia delivered 50 hygiene parcels to the Roma people living in the settlements endangered by floods.

In Zitoradja municipality RC volunteers, staff and FAC team have been involved in emergency sheltering of 9 Roma families (50 persons) with establishing shelter facilities and food distribution. Emergency shelter has been created in the local sports hall where the Red Cross of Serbia has delivered 50 bed mattresses and 100 blankets. In Doljevac municipality 30 people have been evacuated and sheltered at the local community hall. Food, beds, mattresses, and blankets have been delivered by the Red Cross of Serbia.

In five municipalities the Red Cross of Serbia has delivered 21 water tanks (1,000 liters each) and 45 wall dryers.



Red Cross distribution of water tanks and hygiene parcels during the flood response  
Photo: Red Cross of Serbia

The below table showing the emergency stock that was distributed during the weekend by the Red Cross of Serbia from its disaster response warehouse.

Already distributed from the emergency stock of the National Society										
Item/Municipality date of distribution	Lučani	Prokuplje	Kuršumljija	Doljevac	Žitorađa	Gadžinhan	Požega	Arilje	Žagubica	Total
	19.04.2014	20.04.2014	20.04.2014	20.04.2014	20.04.2014	22.04.2014	22.04.2014	22.04.2014	22.04.2014	23.04.2014
Blankets	-	100	250	50	100					500
Mattresses	-	50	120	20	50					240
Hygiene parcel	80	140	50	40	30					340
Canned meat	-	1,800	2,700	1,000	2,700					8,200
Ready-to-eat meals	-	900	1,350	450	1,350					4,050
Rubber boots	100	50	20	20	10					200
Disinfectant	80	150	50	20	20					320
Cot	-	-	-	15	-					15
Dehumidifiers	10	10	10	5	3		4	3		45
Water tanks	-	10	6	-	-	3			2	21

## Overview of non-RCRC actors in country

The municipalities affected by the floods have been organizing emergency evacuations with the assistance of the Sector for Emergency Management and the Red Cross of Serbia where needed. The Government of Serbia has alerted all emergency services to assist the residents affected by the extreme weather conditions. All Red Cross activities have been coordinated with the Department for Emergency Situations of the Republic of Serbia.

### Needs analysis, beneficiary selection, risk assessment and scenario planning

The Red Cross of Serbia (RCS) addressed the needs of the most vulnerable in five municipalities over the weekend but is faced with more and more requests for assistance as the situation evolves. The RCS anticipates the need to engage a certain number of RCS teams for disaster response with the task to pump the water out of the flooded houses and to engage wall dehumidifiers in order to help people to move back to their houses.

The field assessment team has identified the following needs of the affected population: emergency food distribution of ready-to-eat meals and canned food for those evacuated and temporarily sheltered to support their nutrition needs while the people are out of their homes; up to 500 people. The water tanks will be placed in the closest locations to people's houses as to support their urgent water needs until the public water system is restored. It will be followed by the distribution of hygiene parcels and other non-food items (rubber boots and raincoats) as identified during the field visits. Assistance to the affected households will be extended through the deployment of mobile technical teams of the Red Cross to help people in pumping the water out of the houses and with wall dehumidifiers as soon as possible.

Beneficiary selection has been agreed in cooperation with the emergency headquarters of the affected municipalities, and the list of those in need will be cross-shared in the local meetings of the emergency HQ. Since situation is developing, any variances in the numbers will be reflected in the final DREF report after the operation is completed.

As the weather conditions remain challenging with the possibility of more rain and rapid snow-melting from the high mountainous regions from Wednesday, 23 April, it is more likely that situation will deteriorate at some points during week. So far 503 people have been evacuated from the affected areas by the Sector for Emergency Management. Currently the most critical situation is in the village Đunis, Kruševac, due to flooding of the river South Morava which began yesterday, late at night.

## B. Operational strategy and plan

### Overall objective

The immediate needs of at least 1,000 people (approx. 300 households) in the remote areas affected by flash floods are met with the Red Cross disaster response team's assistance through emergency evacuations, distribution of food and non-food items, and house cleaning by pumping water and drying wet walls.

### Proposed strategy

To accomplish the overall objective, the Red Cross staff and volunteers focused on the provision of emergency food distribution and water supply during evacuations in the newly established emergency shelters to meet the immediate needs of the affected population. Two emergency shelters have been prepared by Red Cross branch volunteers at locations provided by the municipal authorities. To enable a smooth transition of the affected households back to the houses after the floods, the mobile technical teams of the RCS assisted with pumping water out from the flooded houses and with wall drying.

The key activities planned as part of this operation are as follows.

- Detailed needs assessment and completion of the beneficiaries' lists according to the criteria agreed with the local authorities;
- Relief distributions and provision of 500 evacuated people with food and non-food items;
- Improving the hygienic situation by distributing 370 hygiene kits and health promotion materials;
- Emergency shelter for 1,000 evacuated people.

With this DREF allocation, the Red Cross of Serbia will effectuate the replenishment of the used stocks so that they to should be prepared for a next emergency by improving the resilience capacities of the potentially affected persons.

## Operational support services

### Human resources

140 volunteers and 7 HQ staff members from provincial and municipal branches have been involved in the emergency operation. No international staff deployment is foreseen within the DREF implementation time frame.

### Logistics and supply chain

The Red Cross of Serbia has a logistic department and procurement guidelines which are in agreement with the IFRC's procurement standards and the locally pertaining legal requirements. The emergency stock of the NS is well maintained, and the transport capacities are ready to respond to an emergency situation.

### Information technologies (IT)

The Red Cross of Serbia will maintain the communication through using mobile phones with its teams and volunteers in the field. Therefore a certain amount to cover the costs of the phone usage is foreseen in DREF budget. For orientation purposes NS staff and volunteers will use GPS during the rescue operations.

### Communications

The visibility of Red Cross of Serbia activities in the field will be reinforced with proper information dissemination to the media on all National Society activities during relief distribution, rescue activities and activities carried out in emergency shelters. Operation-related news and photos will be disseminated through the electronic media, newspapers and the RCS's own website.

### Security

Due to the flash floods, and in a few places the damaged infrastructure, the possibility for the volunteers to get injured in rescue or evacuation activities is higher than usual, and the RC staff and volunteers will receive proper briefing before moving to the field in order to be informed about risks in flooded areas. All disaster response volunteers of the National Society have had a first aid training or a basic disaster management training. The Red Cross of Serbia is covering their volunteers with basic insurance provided through the DREF.

### Planning, monitoring, evaluation, & reporting (PMER)

The Red Cross of Serbia and the IFRC Europe Zone Office will monitor the implementation of activities. Brief weekly updates will be provided by the National Society to the IFRC on the general progress of the operation.

At the end of the operation, a two day lessons-learned workshop will be organised in order to evaluate the operation together with major partners such as the Ministry of Interior, Sector for Emergency Management as well as representatives of those municipal authorities where the operations took place.





# DREF OPERATION

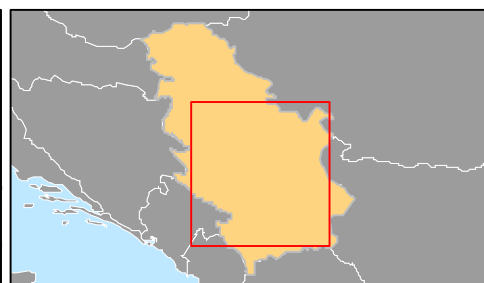
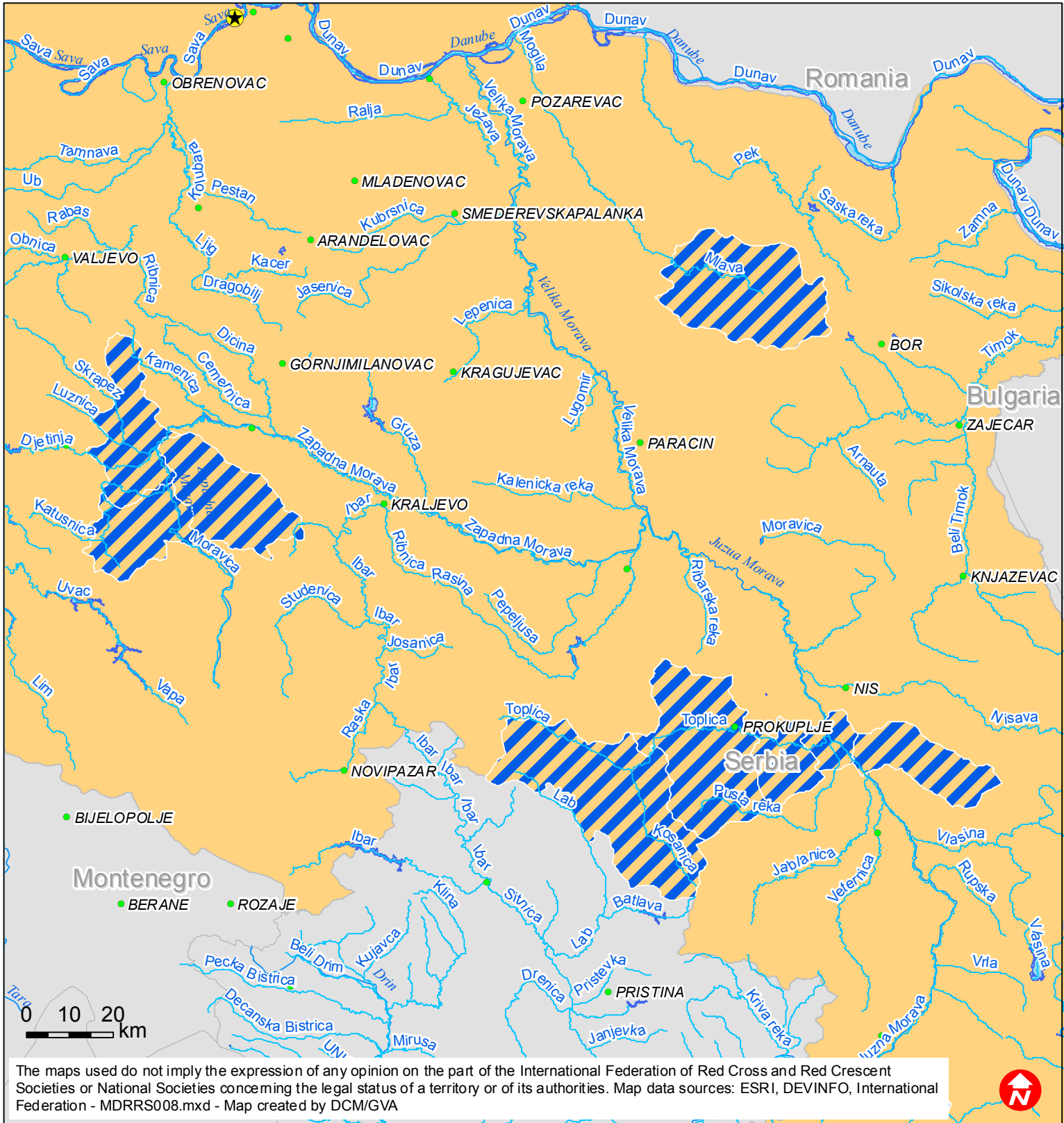
24.04.2014

Serbia DREF April 2014

<b>Budget Group</b>	<b>DREF Grant Budget CHF</b>
Shelter - Relief	1,280
Shelter - Transitional	
Construction - Housing	
Construction - Facilities	
Construction - Materials	
Clothing & Textiles	21,225
Food	5,520
Seeds & Plants	
Water, Sanitation & Hygiene	7,225
Medical & First Aid	
Teaching Materials	
Utensils & Tools	
Other Supplies & Services	
Cash Disbursements	
<b>Total RELIEF ITEMS, CONSTRUCTION AND SUPPLIES</b>	<b>35,250</b>
Land & Buildings	
Vehicles	
Computer & Telecom Equipment	
Office/Household Furniture & Equipment	
Medical Equipment	
Other Machinery & Equipment	
<b>Total LAND, VEHICLES AND EQUIPMENT</b>	<b>0</b>
Storage, Warehousing	
Distribution & Monitoring	
Transport & Vehicle Costs	3,500
Logistics Services	
<b>Total LOGISTICS, TRANSPORT AND STORAGE</b>	<b>3,500</b>
International Staff	
National Staff	
National Society Staff	620
Volunteers	1,800
<b>Total PERSONNEL</b>	<b>2,420</b>
Consultants	
Professional Fees	894
<b>Total CONSULTANTS &amp; PROFESSIONAL FEES</b>	<b>894</b>
Workshops & Training	2,000
<b>Total WORKSHOP &amp; TRAINING</b>	<b>2,000</b>
Travel	
Information & Public Relations	1,680
Office Costs	
Communications	150
Financial Charges	
Other General Expenses	
Shared Office and Services Costs	
<b>Total GENERAL EXPENDITURES</b>	<b>1,830</b>
Partner National Societies	
Other Partners (NGOs, UN, other)	
<b>Total TRANSFER TO PARTNERS</b>	<b>0</b>
Programme and Supplementary Services Recovery	2,983
<b>Total INDIRECT COSTS</b>	<b>2,983</b>
<b>TOTAL BUDGET</b>	<b>48,877</b>



# Serbia: Floods



 Most affected municipalities