

# EARLY ACTION PROTOCOL NOTIFICATION

Guatemala | Floods associated with tropical  
cyclones

7 October 2022



*A visually impaired person receives humanitarian aid through multi-purpose cash transfers, Izabal, October 2022. Source: GRC.*

EAP №:  
**EAP2022GT01**

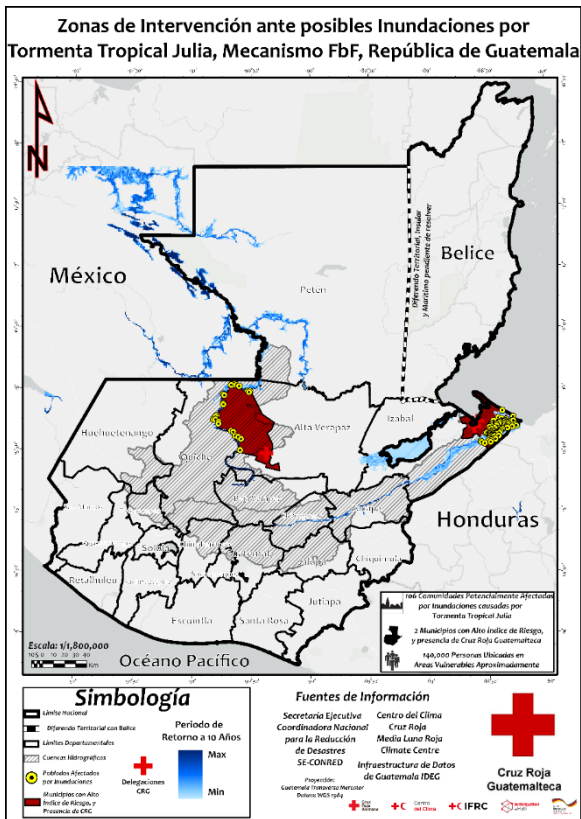
Operation №:  
**MDRGT018**

EAP approved:  
**August 2022**

Early action timeframe:  
**3 Months**

**Budget: 478,796 CHF**  
**To assist: 15,000 people**

# EARLY ACTION PROTOCOL ACTIVATION

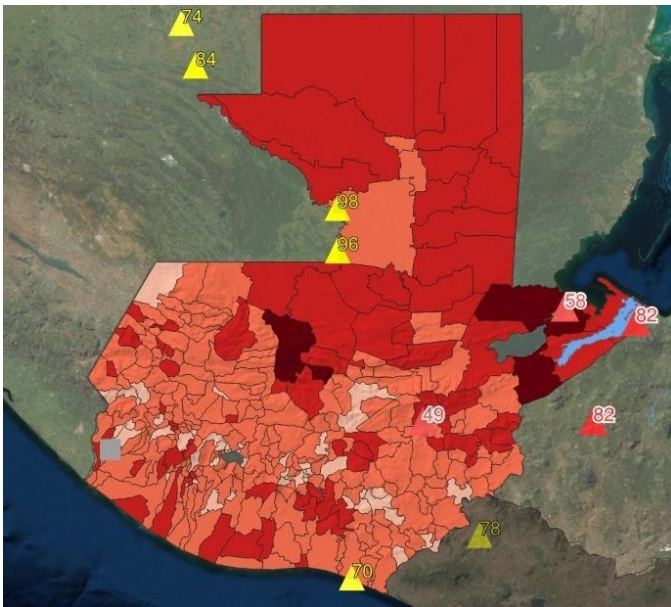


Guatemalan Red Cross has activated its Early Action Protocol for flooding associated with tropical cyclones. On 7 October 2022, activation was reached when the flood forecast predicted that tropical storm (potential hurricane) Julia would cross Nicaragua, Honduras and Guatemala starting Sunday 9th and arriving in Guatemala in the afternoon of Monday 11th, with an expected flooding impact for a 10-year return period in high-risk areas with a lead time of 3 days.

## Activation Overview

- 3 and 4 October 2022: Visualization of the Atlantic Disturbance.
- 5 and 6 Oct: Meetings to verify the evolution of the disturbance. Formation of potential Cyclone 13.
- 7 Oct: Formation of tropical storm Julia.
- 10 Oct: Threshold has been reached.

## Evidence of triggers



GloFas analysis as of 7 October. Source: GRC

## Data from Izabal stations

a\_u

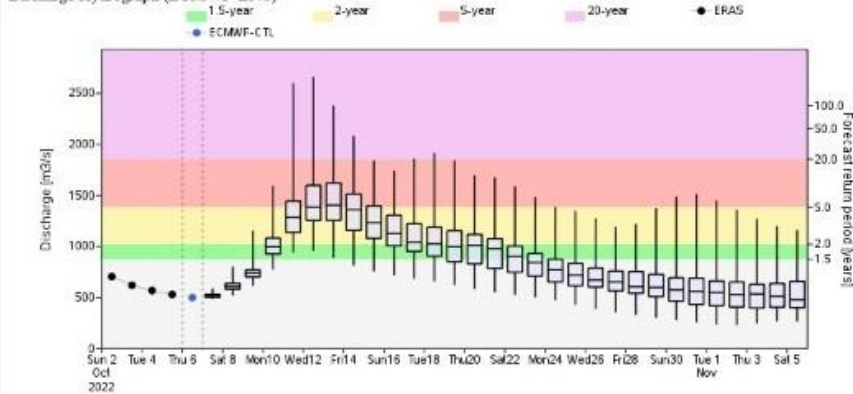
Station ID	Country	Basin	River	Station Name	Point ID	Drainage Area [km2]	Longitude [Deg]	Latitude [Deg]	LISFLOOD Drainage Area [km2]	LISFLOOD X [Deg]	LISFLOOD Y [Deg]
NA	NA	NA	NA	Not a station	DH001313	NA	-88.85	15.75	8,550	-88.85	15.75

### Point Forecast

Forecast Date	Maximum probability (2 yr / 5 yr / 20 yr)	Discharge tendency	Alert level	Peak forecasted
2022-10-07 00:00	96 / 59 / 16		2	in 6 days (on 2022-10-13)

>>Open/Close GloFAS Forecast images

### Discharge Hydrograph (ECMWF-ENS)



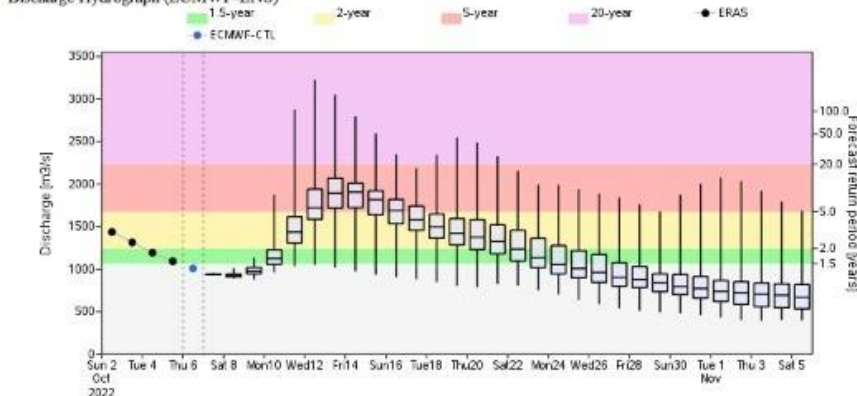
Station ID	Country	Basin	River	Station Name	Point ID	Drainage Area [km2]	Longitude [Deg]	Latitude [Deg]	LISFLOOD Drainage Area [km2]	LISFLOOD X [Deg]	LISFLOOD Y [Deg]
NA	NA	NA	NA	Not a station	DH001319	NA	-88.35	15.65	16,305	-88.35	15.65

#### Point Forecast

Forecast Date	Maximum probability (2 yr / 5 yr / 20 yr)	Discharge tendency	Alert level	Peak forecasted
2022-10-07 00:00	98 / 82 / 16		2	in 7 days (on 2022-10-14)

>>Open/Close GloFAS Forecast images

#### Discharge Hydrograph (ECMWF-ENS)





## Early Action Overview

The Guatemalan Red Cross will target 3,000 households in at least 2 departments. Through the following early actions:


- Multipurpose Cash Transfer
- Distribution of water filters
- Distribution of safe water

## PLANNED OPERATIONS

 <b>Multi-purpose Cash</b>	Female > 18: <b>3,000</b>	Female < 18: -	<b>212,376 CHF</b>
	Male > 18: <b>2,000</b>	Male < 18: -	AP Code: <b>081</b>
<b>Indicator:</b>	Number of people reached with multi-purpose cash in advance of a hazard		
<b>Priority Early Actions:</b>	1. Multipurpose Cash Transfer Distribution		

 <b>Water, Sanitation and Hygiene</b>	Female > 18: <b>6,000</b>	Female < 18: -	<b>2,199 CHF</b>
	Male > 18: <b>4,000</b>	Male < 18: -	AP Code: <b>110</b>
<b>Indicator:</b>	Number of people reached with WASH interventions in advance of a hazard		

<b>Priority Early Actions:</b>	<ol style="list-style-type: none"> <li>1. Distribution of family filters</li> <li>2. Distribution of water disinfection kits</li> <li>3. Distribution of safe water</li> </ol>
--------------------------------	--

 <b>Risk Reduction, climate adaptation and recovery</b>	Female > 18: <b>6,000</b>	Female < 18: -	<b>2,930 CHF</b>
	Male > 18: <b>4,000</b>	Male < 18: -	AP Code: <b>103</b>

<b>Indicator:</b>	Number of people reached with risk reduction and/or climate adaptation interventions in advance of a hazard
-------------------	---

<b>Priority Early Actions:</b>	<ol style="list-style-type: none"> <li>1. Production and publication of spots with key messages and flood protection messages.</li> </ol>
--------------------------------	---

## Contact information

For further information, specifically related to this operation please contact:

### In the Guatemalan Red Cross

- **General Director:** Daniel Javiel Orellana; [daniel.javiel@cruzroja.gt](mailto:daniel.javiel@cruzroja.gt) and [direcciongeneral@cruzroja.gt](mailto:direcciongeneral@cruzroja.gt)
- **Operational Coordination:** Teresa Marroquín, Director of Disaster Risk Management, [teresa.marroquin@cruzroja.gt](mailto:teresa.marroquin@cruzroja.gt)
- **Anticipation Mechanism Focal Point:** Verónica Rivera, Climate Change Programme Coordinator, [veronica.rivera@cruzroja.gt](mailto:veronica.rivera@cruzroja.gt)

### In the IFRC

- **Head of the Country Cluster Delegation (CCD) for Central America:** Nelson Aly Rodriguez, [nelson.alyrodriguez@ifrc](mailto:nelson.alyrodriguez@ifrc)
- **Disaster Management Coordinator, Country Cluster Delegation (CCD) for Central America:** Gerardo Escalante, [gerardo.escalante@ifrc.org](mailto:gerardo.escalante@ifrc.org)
- **Head of the DCPRR Unit:** Roger Alonso, [roger.morgui@ifrc.org](mailto:roger.morgui@ifrc.org)
- **Continental Operations Coordinator:** María Marta Tuna, [maria.tuna@ifrc.org](mailto:maria.tuna@ifrc.org)

### In IFRC Geneva

- **Programme and Operations focal point:** Nazira Lacayo, Senior Officer DREF, Forecast-based Action, [nazira.lacayo@ifrc.org](mailto:nazira.lacayo@ifrc.org)

#### Reference



Click here for:

- [Early Action Protocol Summary](#)