


www.ifrc.org  
Saving lives,  
changing minds.

# Emergency appeal

## Bosnia and Herzegovina: Floods

 International Federation  
of Red Cross and Red Crescent Societies

Emergency Appeal n° MDRBA009	Glide n° FF-2014-000059-BIH	Launched: 25 May 2014
40,000 people to be assisted	Appeal timeframe: 9 months; end date: February 2015	
DREF allocated: CHF 334,013; Appeal budget: CHF 4,522,235		

This Emergency Appeal seeks CHF 4,522,235 to enable the IFRC to support the Red Cross Society of Bosnia and Herzegovina (RCSBiH) to deliver assistance and support to some 10,000 flood-affected families, with a focus on relief, water and sanitation, shelter, cash transfer programming, hygiene promotion, psychosocial awareness, recovery and livelihoods. The planned response reflects the information available at this point of the evolving operation, and will be adjusted based on the further developments and more detailed assessments. Details are available in the Emergency Plan of Action (EPoA).

### Summary of the disaster and Red Cross Red Crescent action

13 May 2014

Heavy rains in Bosnia and Herzegovina caused large-scale flooding with subsequent landslides.

Several cities and villages are experiencing disruption of water supply, power cuts and damaged infrastructure.

A State of Emergency declared in a number of towns.



RC volunteers distributing relief items to affected area - Iliidza  
Photo: RCSBiH

15 May 2014

Ministry of Security of Bosnia and Herzegovina requested international assistance from the Union Civil Protection Mechanism through the Emergency Response Coordination Centre (ERCC) of the European Commission.

Estimated affected people: 1,000,000 people  
(24 casualties; 40,000 people evacuated)



17 May 2014

The IFRC has provided support in the form of a DREF (Disaster Relief Emergency Fund) and a Field Assessment and Coordination Team (FACT).

22 May 2014

The water is slowly receding, but the situation remains complex due to numerous landslides, causing house collapsing and road damages as well as landmines that have been moved by the landslides. Temperatures are increasing causing melting of snow in mountain areas hence the possibility of more floods and landslides cannot be excluded.

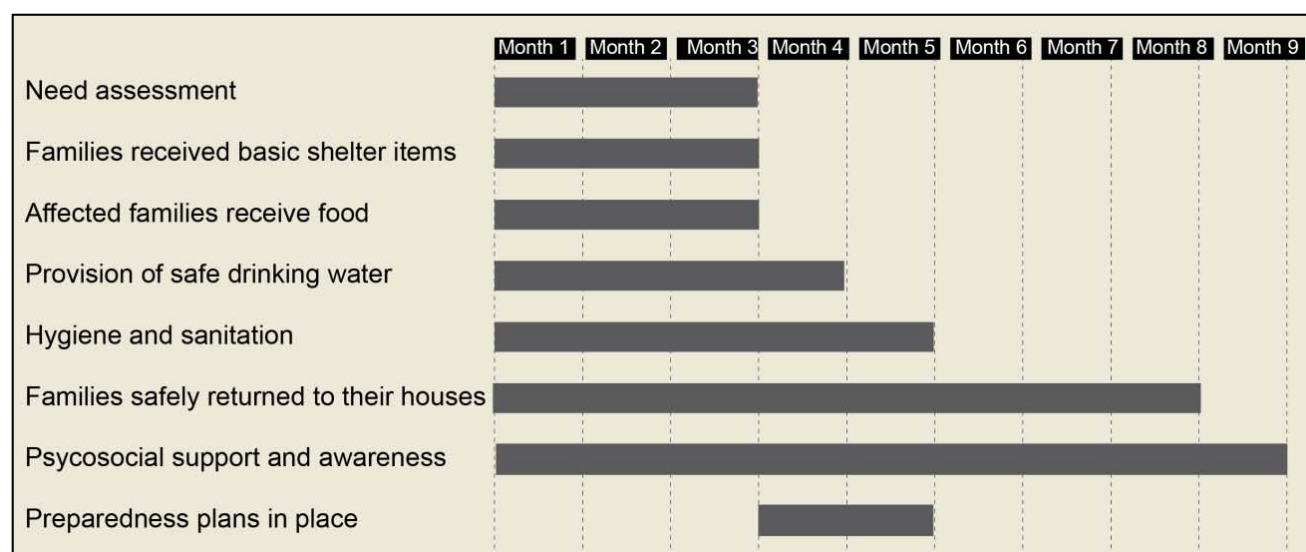
## The operational strategy

**Beneficiary selection:** The direct beneficiaries include elderly people, women and children as they are part of the most-at-risk groups when a disaster strikes. More specifically, the direct beneficiaries within the local populations have been identified based on their level of vulnerability in coping with the disasters. Factors considered in their selection include socio-economic status of the beneficiaries prioritized as most-at-risk. Female-headed households and large family size are other criteria for consideration.

Priority will be given to:

- Families most affected by the floods and landslides that had to be evacuated from their homes.
- Families with women as breadwinners (widows), elderly couples, young couples with small children.
- Families who are not recipients of any substantial assistance, especially housing by government, NGOs and other organization.

Based on the above, the main operational components and related timeframes are reflected below.



## Budget

See attached IFRC Secretariat budget (Annex 1) for details.

Walter Cotte  
Under Secretary General  
Programme Services Division

Bekele Geleta  
Secretary General

## Contact Information

### For further information specifically related to this operation please contact:

- **Red Cross Society of Bosnia and Herzegovina:**  
Branko Leko, Secretary General;  
phone: +387 33 263 936, email: [secretary.general@rcsbh.org](mailto:secretary.general@rcsbh.org)
- **IFRC Country Representation in Bosnia and Herzegovina:**  
Michele Rezza Sanchez, Country Representative;  
phone: +387 33 264 135; email: [michele.rezzasanchez@ifrc.org](mailto:michele.rezzasanchez@ifrc.org)
- **IFRC Europe Zone Office:**  
Alberto Monguzzi, Disaster Management Coordinator;  
phone: +36 1 888 4500; email: [alberto.monguzzi@ifrc.org](mailto:alberto.monguzzi@ifrc.org)
- **IFRC Geneva:**  
Cristina Estrada, Operations Support;  
phone: +41.22.730.4260, email: [cristina.estrada@ifrc.org](mailto:cristina.estrada@ifrc.org)
- **IFRC Global Logistics Service Dubai:**  
Sera Coelho, Logistics Mobilization Delegate;  
phone: + 971 4 4572993, email: [sera.coelho@ifrc.org](mailto:sera.coelho@ifrc.org)



Click here

1. **Emergency Appeal budget and map [below](#)**
2. **Click [here](#) to return to the title page**

---

## How we work

All IFRC assistance seeks to adhere to the Code of Conduct for the International Red Cross and Red Crescent Movement and Non-Governmental Organizations (NGO's) in Disaster Relief and the Humanitarian Charter and Minimum Standards in Disaster Response (Sphere) in delivering assistance to the most vulnerable.

The IFRC's vision is to inspire, encourage, facilitate and promote at all times all forms of humanitarian activities by National Societies, with a view to preventing and alleviating human suffering, and thereby contributing to the maintenance and promotion of human dignity and peace in the world.

[www.ifrc.org](http://www.ifrc.org)  
Saving lives, changing minds.

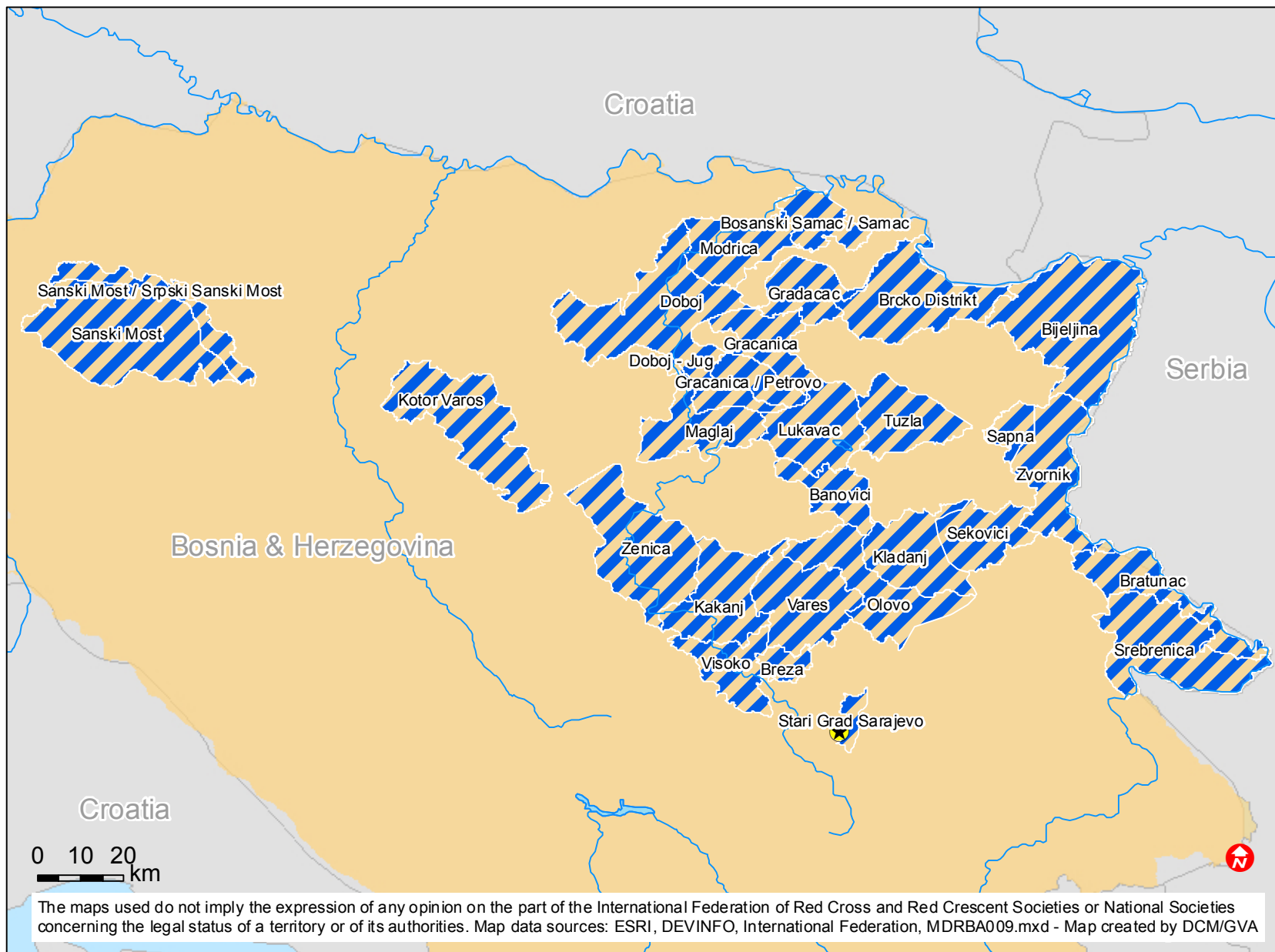


The IFRC's work is guided by Strategy 2020 which puts forward three strategic aims:

1. Save lives, protect livelihoods, and strengthen recovery from disaster and crises.
2. Enable healthy and safe living.
3. Promote social inclusion and a culture of non-violence and peace.



# Bosnia and Herzegovina: Floods



 Affected municipalities

# EMERGENCY APPEAL

23-05-14

MDRBA009 Bosnia

Budget Group	Multilateral Response	Inter-Agency Shelter Coord.	Bilateral Response	Appeal Budget CHF
Shelter - Relief				0
Shelter - Transitional				0
Construction - Housing				0
Construction - Facilities				0
Construction - Materials				0
Clothing & Textiles	442,700			442,700
Food	743,720			743,720
Seeds & Plants				0
Water, Sanitation & Hygiene	1,000,780			1,000,780
Medical & First Aid				0
Teaching Materials				0
Utensils & Tools	1,079,000			1,079,000
Other Supplies & Services	89,200			89,200
Emergency Response Units				0
Cash Disbursements				0
<b>Total RELIEF ITEMS, CONSTRUCTION AND SUPPLIES</b>	<b>3,355,400</b>	<b>0</b>	<b>0</b>	<b>3,355,400</b>
Land & Buildings				0
Vehicles	150,000			150,000
Computer & Telecom Equipment				0
Office/Household Furniture & Equipment				0
Medical Equipment				0
Other Machinery & Equipment				0
<b>Total LAND, VEHICLES AND EQUIPMENT</b>	<b>150,000</b>	<b>0</b>	<b>0</b>	<b>150,000</b>
Storage, Warehousing				0
Distribution & Monitoring	7,000			7,000
Transport & Vehicle Costs	115,000			115,000
Logistics Services				0
<b>Total LOGISTICS, TRANSPORT AND STORAGE</b>	<b>122,000</b>	<b>0</b>	<b>0</b>	<b>122,000</b>
International Staff	180,346			180,346
National Staff	72,000			72,000
National Society Staff	54,000			54,000
Volunteers	168,375			168,375
<b>Total PERSONNEL</b>	<b>474,721</b>	<b>0</b>	<b>0</b>	<b>474,721</b>
Consultants				0
Professional Fees				0
<b>Total CONSULTANTS &amp; PROFESSIONAL FEES</b>	<b>0</b>	<b>0</b>	<b>0</b>	<b>0</b>
Workshops & Training	16,000			16,000
<b>Total WORKSHOP &amp; TRAINING</b>	<b>16,000</b>	<b>0</b>	<b>0</b>	<b>16,000</b>
Travel	31,900			31,900
Information & Public Relations	16,200			16,200
Office Costs	39,700			39,700
Communications	10,130			10,130
Financial Charges	5,190			5,190
Other General Expenses	9,000			9,000
Shared Office and Services Costs	12,702			12,702
<b>Total GENERAL EXPENDITURES</b>	<b>124,822</b>	<b>0</b>	<b>0</b>	<b>124,822</b>
Partner National Societies				0
Other Partners (NGOs, UN, other)				0
<b>Total TRANSFER TO PARTNERS</b>	<b>0</b>	<b>0</b>	<b>0</b>	<b>0</b>
Programme and Services Support Recovery	275,791	0		275,791
<b>Total INDIRECT COSTS</b>	<b>275,791</b>	<b>0</b>	<b>0</b>	<b>275,791</b>
Pledge Earmarking & Reporting Fees	3,500			3,500
<b>Total PLEDGE SPECIFIC COSTS</b>	<b>3,500</b>	<b>0</b>	<b>0</b>	<b>3,500</b>
<b>TOTAL BUDGET</b>	<b>4,522,235</b>	<b>0</b>	<b>0</b>	<b>4,522,235</b>
<b>Available Resources</b>				
Multilateral Contributions				0
Bilateral Contributions				0
<b>TOTAL AVAILABLE RESOURCES</b>	<b>0</b>	<b>0</b>	<b>0</b>	<b>0</b>
<b>NET EMERGENCY APPEAL NEEDS</b>	<b>4,522,235</b>	<b>0</b>	<b>0</b>	<b>4,522,235</b>