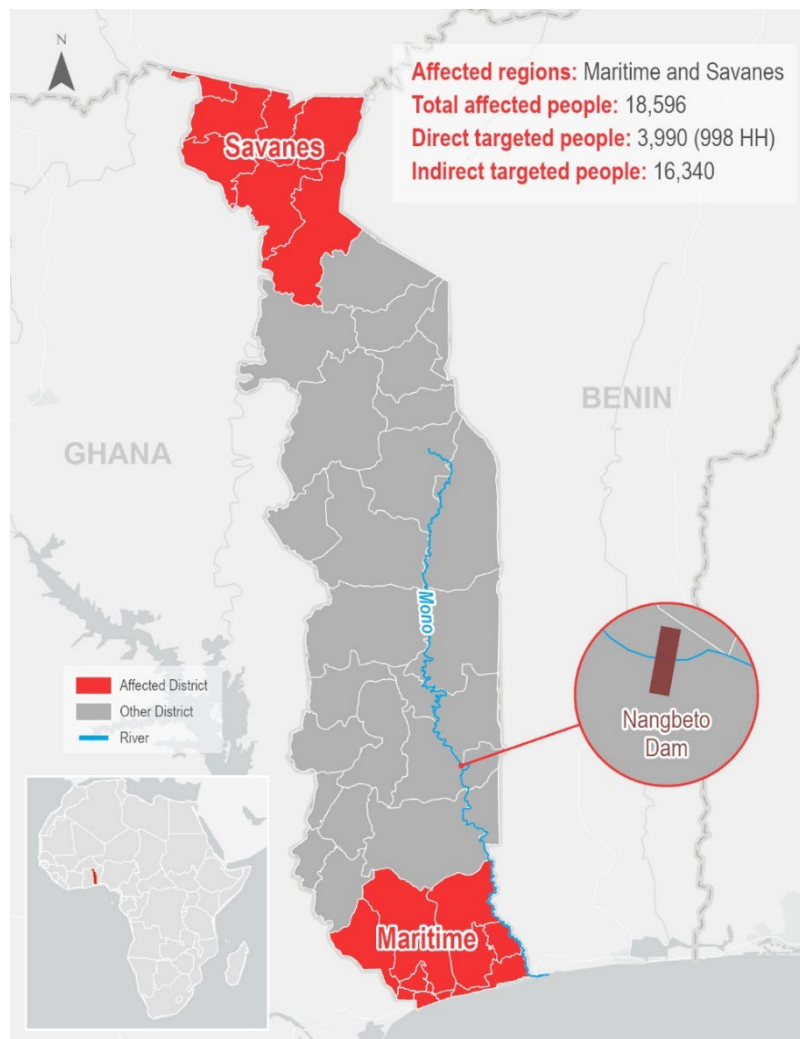




Volunteers collecting data

Appeal no: MDRTG009	DREF allocated CHF 369,133	Crisis Category: Yellow	Hazard: Floods
Glide no: FL-2022-000351-TGO	People [affected / at risk]: 18,596 people	People to be assisted: 16,340 people	
Event Onset: Sudden	Operation Start Date: 01 November 2022	Operation End Date: 30 April 2023	Operation timeframe: 05 months
	Targeted Areas:	Savanes, and Maritime	



Togo Map with the 2 targeted regions, showing the Nangbeto Dam and river Mono from North to South connexions. @IFRC

Description of the Event

What happened, where and when?

Since October, heavy rains have poured down on the northern part of Togo (savannah region), causing overflowing water in communities and pockets of rain flooding in some areas. Three out of the seven prefectures in the Savannah region are seriously affected by flooding, namely the prefectures of Oti, Oti-Sud and Kpendjal. This rainfall recorded from the northern zone and the rest of the country has spilled into the Mono River through the various affluent rivers. The Nangbéto dam is found on River Mono in the Maritime Region. On 17 October 2022, uninterrupted heavy rains in the Maritime Region caused an exponential rise in water levels and a spike in the dam's water level. As from mid-October, Nangbéto dam officials reported that the water retention capacity had already been exceeded while forecasts predicted intense rainfalls in the coming days. On 17 October, River Mono, into which all the water from the northern region empty themselves, overflowed its banks. Dam officials were compelled to release waters to avoid dam failure and greater damages. This incident increased water levels in various streams especially in the Yoto, bas Mono and Lacs prefectures.

These widespread increases in the water level in communities destroyed crops in farms, affecting several hectares of rice, maize, soya, and beans. Floods also filled farm roads and caused material damage. Prominent among the material damage is the destruction of huts, flooding of schools and extensive livestock losses. On 25 October 2022, Togo's National Disaster Prevention Agency (ANPC) released information collected in the *Savanes* and *Maritime*

Regions, showing that over 18,596 people have been affected in the 2 regions. Inventories carried out so far by the ANPC and the Togolese Red Cross point to material damage and numerous vulnerable people.

Preliminary region-based data show that the *Maritime* Region has been affected particularly. In fact, this region hosts 90% of those affected given that these people were hard hit by the release of water from the dam.

1) Maritime Region

Across the entire Maritime Region, 48 villages and 16,340 people have been affected by the disaster.

So far, 03 prefectures, out of 07 the region has, have been considerably affected. The three considerably affected prefectures are Yoto (8 villages), Lacs (18 villages) and Bas-Mono (22 villages) found downstream of the dam. More specifically, the floods caused the following damage in each prefecture:

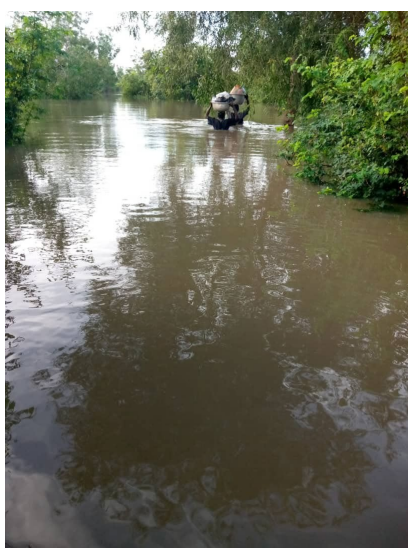
- Lacs prefecture: 18 villages flooded, with 1,093 households affected. There are 119 people living with a disability, 669 children below five, 143 breastfeeding women and 45 pregnant women living amid promiscuity.
- Bas Mono prefecture: ANPC figures confirm 2,488 affected houses, 71 people living with a disability, 881 children below 5, 262 breastfeeding women and 107 pregnant women exposed to health risks.
- Yoto prefecture: it has in total 504 affected households, with 30 people living with a disability, 1,789 children below 05, 69 breastfeeding women and 28 pregnant women.

Since 2009, the Nangbéto dam has not retained this much influx of water requiring the release of over 1,300 m³ per second, affecting mainly the *Maritime* Region. Such a level of impact and the occurrence of this disaster surprised communities, which were unable to deal with it.

2) Savanes Region:

- Kpenjal prefecture: 18 villages have been affected with 459 households hit, including 56 whose roofs were carried away. Some of the affected households housed 573 students, 531 women and 50 elderly people.
- OTI-Sud prefecture: 7 villages were flooded, 104 women were, and 85 households were affected, while 138 houses lost their roofs, and 122 students were hit (source: ANPC).
- Furthermore, the Oti prefecture was flooded in 3 villages like Tambinamoiane, Forêt-Chasse and Sangbana, with 20 households affected, 23 women hit, 33 students whose homes lost their roofs, and were destroyed by the waters.

Evaluations performed by the ANPC together with Togolese Red Cross (TRC) branches highlighted the scale of the disaster in communities and prompted the application for DREF funding.



Residents leaving their homes Helping residents evacuate right in the middle of assessment

Scope and Scale

Floods affected 564 households in the Savanes Region and 4,085 in the Maritime Region. The damages included:

- Destruction of large surface areas of maize, beans, soya, and rice fields;
- Partial and/or complete collapse of huts:
- 207 huts with roofs swept away in the Savanes Region and 378 in the Maritime Region;
- 28 huts collapsed in the Savanes Region and 1,425 in the Maritime Region;
- 17 huts fissured in the Savanes Region and 913 in the Maritime Regions;
- Loss of livestock;
- Loss of clothes and kitchen utensils;
- Destruction of granaries (food stock);
- Flooding of some school buildings and health centres.

The Savanes Region is home to a mainly farming population that lives in highly precarious conditions. This Region is ranked as the country's poorest.

The DREF will provide support to the most vulnerable households. Some of those affected have special needs:

- Women: 5,579 in the Maritime Region and 658 in the Savanes Region;
- People living with a disability: 220
- Pregnant women: 180
- Breastfeeding women: 474
- Children (0 to 5 years): 1,789

Residents left their homes to settle by the roadside (higher ground in villages). Most of them arrived without food reserves or livestock. The floods washed away the livestock and crops that would have been used as food reserves. This situation can lead to risks of severe acute malnutrition and even anaemia in children and pregnant women. Some disaster-affected persons could be tempted to sell off their remaining pieces of farmland, which is their livelihood, if nothing is done to meet their economic needs.

Among those affected by the disaster, there are 1,789 children below 05 who live amid this promiscuity and drink unclean water. They may be exposed to the risks of diarrhoeic diseases, and even an epidemic. Furthermore, some of those affected by the disaster have been taken in by relatives who share their food reserves with them. If these reserves are insufficient, the situation can create various tensions (SGBV), and undermine social cohesion.

Previous Operations

Has a similar event affected the same area in the last 3 years?	Yes
Did it affect the same population?	Yes
Did the NS respond?	Yes
Did the National Society request funding from DREF for that event(s)?	Yes
If yes, please specify	DREF Operation No. MDRTG008 of 2017

If you have answered yes to all questions above, justify why the use of DREF for a recurrent event, or how this event should not be considered recurrent

Since 2009, the Nangbéto dam has not witnessed this rise in the water level with releases of over 1,300 m³ per second. The impact so far has been more considerable when compared to past years. Such a level of impact and the occurrence of this disaster surprised communities that were unable to deal with it. More people have now been affected by the flood waters and this is only a preliminary assessment.

In fact, over 18,000 people have been affected in the 2 regions when compared to the 16,000 affected during the MDRTG007 intervention. Furthermore, excluding the direct impact of the floods on disaster-affected communities, the Savanes Region that borders Burkina Faso is now grappling with an influx of displaced persons. Although information on displaced persons is not yet available, floods in the area are exerting considerable pressure on the already fragile balance in host communities. Past floods in the Maritime Region used to affect only some villages in Bas-Mono and Lacs.

Specify how the lessons learnt from these previous operations are being used to mitigate similar challenges in the current operation

Just as in every operation, the implementation team faced some challenges to which it seeks, under this intervention, to provide mitigation measures to strengthen the effectiveness of DREF interventions:

1) Delay in fund transfer and arrival of the surge.

After agreements were signed, under past operations, the transfer delayed by several weeks. The Surge too experienced delays before it arrived. To prepare for this situation, the IFRC, together with the TRC, deployed an operational staff, who will support effective launch of the intervention after providing support to plan this operation based on new formats and DREF tools.

2) Selection of beneficiary villages and households and the discontent of non-beneficiaries were identified as vital, requiring clear processes and constant upstream communication with communities for activities to run smoothly.

Under this intervention, the TRC will oversee community engagement and the creation of a beneficiary management committee through which, as soon as the operation starts, information will be shared with the community on intervention beneficiary selection. Furthermore, the intervention will supplement measures for community resilience and possible support from other partners.

3) Known financial management challenges under the MDRTG008 operation were also considered in this intervention with the strengthening of operational and financial monitoring mechanisms, which will include:

- Regular updating at the delegation of information or data;
- Deployment of an experienced Cash surge and an IFRC finance officer based in neighbouring Benin who masters logistics procedures. They are expected to be present for at least 3 out of the 5 months the intervention will last. Financial support will be available throughout to strengthen NS monitoring and reporting. External support with the surge's experience in past interventions was quite helpful in implementation especially during beneficiary selection.
- Creation of a separate team for operation management. This refers to a new more experienced finance and operational team, which was recruited after the financial management incidents under DREF MDRTG008. Several RDRTs trained on cash and WASH will also be used for technical aspects.

Current National Society Actions

<p>Coordination</p>	<p>The one hundred and fifty (150) TRC volunteers mobilized on the field to assess the situation were technically assisted by the Togolese National Civil Protection Agency to collect data using kobo collect. Field data was sent to the national disaster risk reduction platform for decision making as necessary. Regional coordinations located in Tsévié for the Maritime Region and Dapaong for the Savanes Region cover the zones of intervention. Each coordination has personnel, volunteers and more or less significant logistics. Under TRC decentralisation, each regional coordination is an arm of the secretariat general in the various regions of the country. Consequently, the Maritime and Savanes regional coordination will manage activities regionally, and then report to the secretariat general. Regional coordinations will receive support from NS head office personnel.</p>
<p>Assessment</p>	<p>Since 18 October 2022, 150 volunteers from the disaster preparedness team of the Togolese Red Cross (DP Teams TRC) have been mobilised to perform preliminary assessments in the most flooded localities in the Maritime and Savanes Regions.</p> <p>These volunteers communicate regularly with the TRC's Rescue Department on changes in the situation. All expenses incurred under these rapid assessments are not assigned to this DREF. However, detail assessment is necessary at the start of the operation.</p> <p>Preliminary ANPC-released data from records of the affected were collected on 25 October 2022. A more in-depth assessment is necessary especially for the Savanes Region while continuous assessments are necessary in the Maritime Region.</p>
<p>National Society Readiness</p>	<p>Under annual activities, the NS has designed community contingency plans thanks to a German Red Cross-funded disaster risk reduction project. These contingency plans were activated in various localities based on scenarios including activation of the early warning system in communities by volunteers, who made it possible to prevent loss of human lives. The mobilised volunteers organised sessions to sensitise communities not to risk crossing flooded waters. Furthermore, as soon as the rains started, the NS increased community-oriented sensitisation drives while ensuring that beacons and limn meters are read to enable residents take appropriate measures and as necessary trigger the community contingency plan. Simulations were organised together with various actors in 10 villages selected from each of the 2 regions, namely Savanes and Maritime with respectively 3,035 and 2,895 people reached, including 1,157 children, 1,163 women and 815 men for the Savanes Region and 1,504 children, 799 women, 592 men for the Maritime Region. Compliance with the warning system in other localities is constantly monitored. Furthermore, actions carried out in the various sectors below were also driven by the priority actions under these contingencies plans.</p>

<p>Community Engagement and Accountability</p>	<p>Volunteers also contributed to each flooded village, in targeted zones, to dialogue with local officials in a bid to resettle - with support from these officials, residents in danger-free zones. Mutual support groups were created as facilitated by volunteers. TRC partner radios broadcast shows on what needs to be done before, during and after floods with support from volunteers (PC -Team and Focal Points), the ANPC and the Ministry of Social Action.</p> <p>Community engagement is manifested through the local emergency committees that help communities to organise the response (support action to resettle, rebuild, move in as well as sites for evacuation, assistance to people especially those with disability).</p>
<p>Activation Of Contingency Plans</p>	<p>A member of the National Disaster Risk Reduction Platform, the NS, based on weather data from the light rainy season and information on the flow rates for water releases at the Nangbéto dam, mobilised its various branches to kickstart early risk reduction actions in accordance with contingency plans. Since October started, the following upstream measures have been taken namely:</p> <ul style="list-style-type: none"> • Provide refresher training to local emergency management committees and disaster response teams; • Update community contingency plans; • Update warning systems and the SAP network; • Run simulations; • Organise shows on community radios. <p>This is what the NS was doing when torrential rains in the northern and Savanes Regions started flooding villages. The NS was able to provide support to regional coordination's:</p> <ul style="list-style-type: none"> • To resettle villagers on temporary sites that had been identified and built accordingly; • To sensitize and assist vulnerable persons, as well as orphans who were quite young and without support to enable them to resettle safely.

Movement Partners Actions Related to The Current Event

<p>IFRC</p>	<p>The TRC is a West Coast country and as such receives support from the West Coast Bureau with its personnel. To manage these floods, there is constant communication between Abuja and Cotonou as well as Lomé on one hand for monitoring of recommendations and on the other hand for guidelines and miscellaneous support.</p> <p>Under this DREF, the IFRC helped the NS with drafting and submission.</p>
--------------------	---

ICRC	The ICRC mission in Togo is closely monitoring the situation and advises the NS on what needs to be done in accordance with its mandate in a bid to alleviate the suffering of the affected people. However, it is way more concerned with the fragile security situation with attacks from non-State armed groups.
Partner National Society	The Swiss and German Red Cross have offices in Lomé, which coordinate projects implemented in specific regions. The TRC periodically organises discussion meetings with all Movement partners in Togo to iron out differences and maintain a positive momentum. This meeting is usually held in the TRC.

Other Actors

Government has requested international assistance	Yes
National authorities	<p>The ANPC and the weather office verbally updated the Minister of Safety and Civil Protection, General Yark Damehame, on last week's flood situation. Ascertaining the scale of the situation notably in the Savanes and Maritime Regions, the Minister stated, "This critical situation already shows that aquifers are overwhelmed, with the onset of overflowing rivers and water bodies that could worsen floods over the coming days in the Kpendjal, Oti, Oti-sud, Kéran and Dankpen prefectures."</p> <p>Officials also contributed to sensitise residents in these localities by asking them to be more vigilant before calling on all actors to come together to support residents already affected by the disaster.</p> <p>The Ministry of Social Action distributed food assistance made up of maize, oil, rice to residents in the Aklakou canton under the Lacs prefecture (Maritime Region). Overall, 775 households received assistance. Country officials continue monitoring the situation closely and mobilising partners for funding and possible assistance.</p>
UN or other actors	<p>National platforms for Disaster Risk Reduction (DRR) bring together international institutions including those of the United Nations as well as national institutions and associations. As such, periodic meetings are organised to discuss issues relating to disaster risk reduction.</p> <p>The main national platform, which the ANPC is tasked with coordinating, has not [source phrasing has an issue, so it is hard to understand intended message here.] held its periodic meetings during which the TRC and the NS played an active role in updating multi-hazard contingency plans and the ORSEC plan after which flood management simulations were organised in the Maritime and Savanes Regions to put all actors, residents included, on alert.</p>

List major coordination mechanisms in place

The TRC is an active member of all national, regional, prefectural, and local platforms tasked with disaster risk management in Togo.

The National Civil Protection Agency, which acts as the DRR platform lead, works hand in hand with the TRC for both prevention and response. This accounts for why the ANPC supported the 150 TRC volunteers deployed on the field under assessment of the flood situation and regularly shares government action updates and other data to update planning.

Furthermore, the TRC' structure is hinged on enlarged inclusive coordination in the various regions of the country. As concerns implementation of this DREF, regional coordination located in Tsévié for the Maritime Region and Dapaong for the Savanes Region cover the zones of intervention. Each coordination has personnel, volunteers and more or less significant logistics. Under TRC decentralisation, each regional coordination is a miniature arm of the secretariat general in the various regions of the country. Consequently, the Maritime and Savanes regional coordination will manage activities regionally, and then report to the secretariat general. Regional coordination will receive support from NS head office personnel.

Needs (Gaps) Identified



Water, Sanitation and Hygiene

Most flooded localities do not have drinking water supply. Residents get water from boreholes, rivers, large - diameter wells, and rainwater reserves in households. Given the current situation, water sources have been contaminated or are not quite stable for consumption without purification measures. Residents do not master and use water purifications techniques. Prevention and sensitisation mechanisms are necessary to prevent community-wide risks of water-borne diseases, curb risks relating to Essential Family Practices (EFP), and fight against open defecation. Radio shows will be organised to sensitise the wider public on essential family practices and other subjects relating to hygiene and sanitation.



Health

The health situation is not the best although there are health facilities in disaster-affected localities. With the floods, threats of water-borne and/or faecal-orally transmitted diseases, such as cholera, typhoid fever are imminent. Furthermore, mosquito proliferation raises fears that the number of cases of malaria, which is an endemic disease, could increase. The food situation is also precarious notably among children aged between 0 and 5 and in nursing women. This could lead to cases of severe acute malnutrition (SAM).

The notorious promiscuity in some localities has raised fears that the number of cases of contagious diseases (cholera, COVID-19) could increase, triggering an epidemic and sexually transmitted diseases especially AIDS. To accomplish this, there are plans to organize multi-theme capacity building sessions for volunteers so that they can in turn organise sensitization drives in this regard. Furthermore, mosquito nets will be distributed to households and condoms to the sexually active. Mechanisms will also be deployed in communities to combat COVID-19.



Livelihoods And basic Needs

Farms were flooded even before the crops they hosted matured. The flood waters swept away resident's livestock, which are a major source of income. Host families share their food reserves with their guests. Roadside-dwelling residents find it difficult to get food because markets are inaccessible. Residents' socio - economic situation is particularly precarious to the extent where the purchasing power in some localities has nosedived.

This situation has led to the closure of schools because the roofs of some schools have been swept away and their yards flooded. It is worth noting however that some schools whose roofs are intact and are not flooded have become dormitories and resettlement sites for some of those affected by the disaster. Exposure to bad weather and basic food as well as non-food needs have been identified as the current priority of homeless households. Several disaster-stricken persons have moved in with relatives and share in the food reserves of the host households that used to live off the region's economic activities affected by this impact.



Community Engagement and Accountability

Since the disaster stricken were counted, the contribution of local officials as well as residents has been enlisted. During DREF implementation, periodic meetings will be organised, involving every segment of society and professional corps. Protection, Gender, and Inclusion (PGI) standards will be considered and included in the beneficiary selection process. Those affected by the disaster, or their representatives will take part in validation of beneficiary selection criteria and at all levels of decision making. A complaints and feedback management mechanism will be created. This mechanism will enable communities to report excesses and make proposals so that the operation can succeed comprehensively. To this effect, volunteers will sensitise the disaster-stricken on the entire beneficiary selection process.

Shows will be aired in local languages over community radios and a door-to-door strategy will be implemented based on priority subjects collected in feedback. Prefectural, municipal, and local platforms will be leveraged for information management and for support and complaints resolution.



Shelter Housing and Settlements

Affected residents were forced to leave their homes and settle by the roadside, with host families and schools amid promiscuity. With the precarious economic situation of residents, it will be possible to rebuild their homes without external support. Based on available data, the Maritime Region has the highest number of destroyed huts, representing 1,425, where 70% (i.e., 998 household huts) of them are considered to be dwellings huts destroyed. The TRC also pointed out that some destroyed huts were not necessarily owned by a single household. To this effect, this average of actually destroyed huts used for sleeping purposes will be considered as the most urgent need. The last number reportedly relates to residential huts and is assimilated to the number of homeless households given that some huts were also used as granaries.

Only 28 houses in the Savanes Region have been listed so far as destroyed. Through this DREF, assistance will be given to households whose housing structures were completely or partially destroyed by giving construction material and financial assistance to the most vulnerable notably the elderly, the physically challenged, widows, and orphans who are quite young and without support.

Operational Strategy

Overall objective of the operation

The purpose of this DREF operation is to assist 16,340 people affected by floods (4,085 households), by providing support in the form of water, hygiene and sanitation, shelter, livelihoods, and disease prevention in the Maritime Region while performing assessments in the 3 affected prefectures in this region and affected prefectures in the Savanes Region. Implementation of the project will last 5 months.

Response strategy rationale

To this effect, the Togolese Red Cross started mobilising personnel whose capacity will be strengthened through a multi-theme capacity building plan to ensure relevant implementation of the proposed intervention and implementation subject to TRC operational standards in emergency situations.

The TRC's intervention will be to provide immediate assistance to the most vulnerable communities in need based on vulnerability criteria agreed upon with community committees and officials locally.

NS targeting is based on needs identified based on available information collected by the ANPC and rapid field visits performed by NS branches following this preliminary data from the ANPC.

In fact, 998 homeless households will receive shelter assistance and 998 households multi-purpose support to meet basic food and non-food needs.

An in-depth evaluation has been planned to confirm this first needs analysis and planning. This target and strategy will be updated if necessary, following the in-depth evaluation that will be completed in 20 days, taking into account logistics and administrative provisions. Measures have been taken to address a possible delay in funding availability to avoid slowing down assistance roll-out to communities. In-depth assessments will be carried in the Prefectures in the Savanes Region to clearly identify the needs of communities affected by floods due to lack of clear information and challenges accessing it remotely.

During this period, the TRC will provide immediate shelter assistance in the Maritime Region for which the rapid assessment data already collected shows higher vulnerability and urgent needs in terms of shelter, materials, health services, food, and non-food items.

Activities will also launch with a market assessment, which will be performed to determine the cash feasibility that has been identified as a priority response modality. Secondary data collected by branches have already made it possible to know that markets are regularly supplied and can deliver, in the headquarters of prefecture of the Maritime Region, basic necessities and building materials regardless of the assistance option chosen at the end of assessments. Community transportation assistance has to be included as necessary considering the 15 to 20 KM distance right till the headquarters.

Continuous assessments will also be performed in the Maritime Region given the trend with the rains and they will also make it possible to update planning in this region as necessary.

No cash or material assistance will be distributed before analysis of assessment data is finalised and the operation is updated as necessary. This analysis will be performed by the TRC with support from the operational team and the IFRC'S DREF team and the ANPC with whom the TRC will share the assessment report.

More immediately, at the same time as the assessments that will target the 6 prefectures listed as affected, the TRC will give direct assistance to 998 households (3,990 people) in 3 of the most affected prefectures of the Maritime Region through emergency shelter assistance for households whose homes were destroyed, delivery of multi-purpose cash assistance to meet food and non-food needs including essential household items.

Social mobilization and sensitization actions will be carried in the 3 prefectures through actions to promote and broadcast local and mass messages that will target those most exposed to bad weather and disease risks in communities with emphasis on highly vulnerable groups. Sixteen thousand three hundred and forty (16,340) people will be sensitized to prevent the risk of disease outbreak and spread. Messages will be updated as necessary and/or enriched using feedback from engaged communities through interactive mechanisms for feedback collection and management of community information.

Targeting Strategy

Who will be targeted through this operation?

Two priorities will be used to define the target of this operation:

- The target for evaluation that will cover the Maritime Region and the Savanes Region
- The target for the response focused, in the meantime, only in the Maritime Region.

For now, rapid assessment does not enable appropriate assistance planning in the Savanes Region. Quantitative and qualitative livelihoods needs, and other sectors have not been clearly stated for now. However, rapid assessment shows that hectares of crop and several livestock heads have been affected. Although, this does not make it possible to set out an objective or a response strategy, it justifies assessment. Once the assessment is completed, the multi-purpose cash assistance currently planned will be reviewed to also take into account needs in the Savanes Region. Shelter needs in the Savanes Region will not be prioritised because they are not significant. For the purpose of cost effectiveness, the emergency is the Maritime Region.

In the Savanes Region, only assessments will be performed in the meantime and based on results, this region may be included in unconditional cash assistance. These assessments will make it possible to clarify as a priority relevant needs and assistance under livelihoods and emergency services. This will be the case most especially for the Savanes region, where the highest amount of damage recorded concerns livelihoods, crops, and livestock with low impact on shelter. However, current data does not make it possible to determine the quality and quantity impact, on households, of the crops and livestock destroyed.

As such, this intervention will in total target 16,340 people where 3,990 (998 households) will benefit from cash assistance for shelters and multi-purpose cash assistance for food and non-food items in the Maritime Region (Prefecture of Lacs, Bas-Mono, Yoto). The 3 affected prefectures in the Savanes Region will still be targeted by assessment activities pending the availability of more data.

The Maritime Region is the priority target region for the response given the number of people affected and shelter needs.

The NS will perform targeting based on needs identified from information already available in the ANPC's evaluation report and analyses performed by NS branches through rapid field visits following the data received from the ANPC.

Nine hundred and ninety-eight (998) households have been identified based on the number of huts used as housing and not for other purposes such as food storage etc. According to the first needs analysis, all the huts destroyed were not only meant for housing but also to store crops among other things. Furthermore, some huts belong to the same households. Based on this information from branches, an average of 70% of huts currently identified as completely destroyed are considered housing structures for households. This means that 998 Households have been defined as the main target of this intervention.

Detailed assessment has been planned to confirm these analyses. This target and the strategy will be updated as necessary after the detailed assessment. Multi-purpose cash assistance for access to services, and emergency food and non-food necessities may be reviewed to also cover the Savanes zone based on the results of the assessment. Review of this plan will also take into account coverage, in the Savanes region, of the displaced persons coming from Burkina Faso and affected too by the floods.

What selection criteria has been used for targeting affected?

The beneficiaries of this intervention plan are residents of the 3 prefectures in the Maritime Region, who are the most affected and whose needs have been clearly identified.

The intervention will reach 16,340 people targeted overall for delivery of health, water, hygiene, and sanitation services in affected and host communities by prioritising:

- Households rendered homeless after the dam overflowed on 17 October 2022 in the Maritime Region;
- Households that lost their sources of farming and livestock revenue due to destruction by flood waters.

To select the beneficiaries supported for livelihood assistance, based on the impact criteria listed herein above, the TRC will prioritise households that fulfil the following vulnerability criteria:

- Female-headed households;
- Elderly persons living alone;
- Presence of pregnant women and/or nursing mothers;

- Household host to a person living with a disability:
- Household with a child below the age of 5.

These criteria will be tabled to the *ad hoc* committee tasked with selection and approval of beneficiary lists, which will be created.

Continuous in-depth assessment will be performed by volunteers and may also inform as necessary the updating of this targeting.

Targeted Population

Women	6,536	Rural %	Urban %
Girls (under 18)	1,961	100	
Men	5,556	Estimated Percentage People with Disability	
Boys (under 18)	2,287	1.90	
Total targeted population:	16,340		

Risk and security considerations

Please indicate about potential operational risk for this operations and mitigation actions


Risk	Mitigation action
The current socio-economic situation triggered by the Covid pandemic and the war in Ukraine could be synonymous with even more inflation on the market, which could impede smooth implementation on the field.	With the contribution of the volunteers who will be deployed and support from various platforms, implementation of the DREF will demonstrate resilience and consider new proposals in response to occurrence of the risks stated.
The almost daily torrential rains prevent volunteers from carrying out activities. Some villages can be accessed only on foot, bicycle, or canoe.	Thanks to perfect collaboration with the National Civil Protection Agency, the Togo Red Cross will seek its appropriate logistical support to mitigate these risks.
Based on the lessons learnt from the past financial situation in 2019, the NS has taken steps for smooth and scheduled management plus frugal as well as rigorous management of the financial resources allocated for implementation of the various projects globally. Capacity building sessions have been organised for technical personnel tasked with programme management and for financial personnel. Consequently, the NS has designed an internal organisation that entails monitoring project implementation and their timely reporting based on regular and transparent disbursement of resources for activity implementation. Consequently, the 2019 situation enabled the TRC review its entire financial and technical mechanism for management of various projects.	This DREF will get a realistic plan and objective based on re-assessment in targeted zones to set out the proper necessary actions. Furthermore, monitoring missions with IFRC support would make it possible to anticipate possible delay risks that could occur during implementation.



Please indicate any security and safety concerns for this operation

The Savanes Region has for some months now come under deadly attacks from non-state armed groups. This situation is the leading risk volunteers and beneficiaries face. To curb this risk, the TRC, thanks to its close collaboration with officials, will inform them about all activities and seek their counsel as well as support during every intervention.

A joint ICRC/TRC mission, carried out in September 2022 to assess the situation of those displaced in the northern part of Togo, made it possible to strengthen collaboration ties with officials in these localities. This strengthened collaboration will be leveraged to implement the DREF smoothly and serenely. Furthermore, the network of volunteers (Safety Security Focal Points) will be used to share security updates.

Planned Intervention

	Community Engagement and Accountability	Budget	CHF 16,886
		Targeted Persons	16,340
Indicators:		Target	
Number of information systems		2	
Number of shows aired		15	
Number of people reached		16,340	
Number of feedbacks collected		500	
Percentage of feedback collected and treated		100%	
Focus group discussion conducted for data collection and feedback in Maritime and Savanes		30	
Priority Actions:		<ul style="list-style-type: none"> • Creation of community feedback systems; • Radio messages on the floods broadcast 60 times in local languages; • Deployment of 60 volunteers and 3 focal points for Sensitisation Campaigns on floods and lifesaving gestures and risks of water-borne diseases and how to prevent them for 5 days; • Creation of a system for collection of community feedback, complaints, and perceptions; • Organisation of 10 interactive radio sessions; • Broadcasting of messages on risks relating to water-borne diseases and how to prevent them (social media campaign); • Support to the community feedback system (including monitoring of rumours and/or perceptions) and feedback is considered and used to improve the operation; • Create an internal interdepartmental communication and updates on the progress of the operation and institutional engagement. 	

	Health	Budget	CHF 10,935
		Targeted Persons	16,340
Indicators:		Target	
Number of people sensitised		16,340	
Number of people trained		90	
Priority Actions:		<p>Two four-day training sessions for 60 volunteers and staff on psychosocial support during emergencies and epidemics. This training course makes it possible to revisit basic concepts in community surveillance, epidemic prevention, and psychosocial support and assistance for affected households;</p> <ul style="list-style-type: none"> • Purchase and distribution of mosquito's nets for 180 Pregnant women identified and 474 breastfeeding women; • Sensitization of communities on disease risks with focus on the most vulnerable groups, notably pregnant women, and breastfeeding women. 	
	Shelter Housing and Settlements	Budget	CHF 166,797
		Targeted Persons	3,990
Indicators:		Target	
Number of volunteers trained on support on shelter construction monitoring		30	
Number of households assisted for completely destroyed houses		998	
Mission from technical IFRC shelter conduct to support the sectoral activities		01	

Priority Actions:

Shelter assistance will focus on assisting and providing materials needed to build houses for an average of 998 households estimated to be homeless so far. Households will be accurately identified to ensure that households that had 1 or more huts destroyed are counted and each household gets one house. Based on average 4 to 5 people per household as per the averages recorded in already-collected data.

- 1- Needs Assessment;
- 2- Selection of beneficiaries
- 3- Market assessment;
- 4- Capacity building for 30 volunteers on monitoring the construction of flood-resistant structures;
- 5- Support for vulnerable people to build their own shelters;
- 6- Handing of vouchers to selected beneficiaries. This activity will involve selecting the most vulnerable people. The contents of the kits will be clearly defined during in-depth assessment.
 - Monitoring cash or voucher distribution;
 - Assistance to build houses for households that need TRC support
 - Monitoring of constructions;
 - Post distribution monitoring.

**Multi-purpose Cash****Budget**

CHF 65,818

Targeted Persons

3,990

Indicators:**Target**

Number of volunteers and staff trained on LPC and ERLA

20

Number of persons mobilized for assessments in the two regions

30

Number of FSP contract signed for cash

01

Number of need assessment report done and shared for both regions

01

Number of market assessment report shared for both regions

01


Number of households assisted with cash for food and non-food


998

Number of post distribution monitoring report produced at branch level

10

Percentage of households reported satisfied by the assistance	90
Percentage of households which has use the cash for food and non-food items	90
<p style="text-align: center;">Priority Actions:</p>	<ul style="list-style-type: none"> • Identification of beneficiaries within 4 days as per the criteria adopted by communities. • Training of volunteers in assessment and data collection • Market assessment and monitoring. • Cash feasibility assessment and • Analysis of assessment data and revision of the planned intervention with confirmation of the cash modality or voucher to be most relevant. • FSP agreement processing facilitate with the surge CASH expert support deployed and IFRC operation officer • Training of 20 TRC Staff and volunteer supervisors on the methodology for livelihoods assessment, monitoring/evaluation, and cash assistance. • Emergency livelihoods needs assessment; • Mobilization of volunteers and staff for needs assessments; • Distribution of multi-purpose cash to cover food and non-food needs for 998 households for a total of 34,000 XOF per household. The content and prices were estimated based on a contribution to the average household shopping list for food supplies (rice, maize, beans, oil, sugar) and the prices of essential household items in local markets (buckets, cups, blankets, cooking utensils, and soap). Nine hundred and ninety-eight (998) households will receive the cash amount that also includes a support package for transportation when they go shopping given that markets are quite a distance from the various villages: averagely 15 to 20 km. • A post-distribution monitoring survey will be conducted after each cash distribution; representing a total of two (02) surveys per prefecture: one (01) to monitor cash disbursed for shelters and on the other to monitor cash distributed for food and non-food needs.

	National Society Strengthening	Budget	CHF 42,483
		Targeted Persons	70
Indicators:		Target	
Number of volunteers mobilised		70	
Number of assessment report per region		01	
Number of monitoring report produced at branch level		10	
Number of monitoring report produced by HQ monitoring mission		06	
Priority Actions:		<ul style="list-style-type: none"> • Capacity building mainly concerns the training sessions needed to implement activities for volunteers, focal points in regions and prefectures. Training will be done in advance and will also help equip and brief volunteers on the risks involved in the operation, the code of conduct and applicable emergency procedures. • Staff and volunteers assigned to the operation will be deployed over a combined duration of at least 90 days, representing the intensive implementation period to last for 3 months to ensure the most important activities are completed. • The NS will not only ensure continuous monitoring through the different branches but also through technical and administrative headquarters staff. 	

	Secretariat Services	Budget	17,046
		Targeted persons	16,340
Indicators:		Target	
Number of monitoring and technical mission support		08	
Number of surge Cash deployed to support the NS		01	
Priority Actions:		<p>The IFRC will increase direct on-site assistance in addition to the remote assistance it already provides. The IFRC will provide continuous technical support for cash activities, especially since this will be TRC's first experience with cash assistance. Technical assistance for shelter construction will also be provided with input from the region and/or the delegation. IFRC's monitoring and technical contribution will also aim at mitigating operational and financial management risks in line TRC strengthening. Under this intervention, the delegation will therefore ensure:</p> <ul style="list-style-type: none"> • Support for deployment and briefing of Surge CASH; • Deployment of Francophone financial and operational managers based in Benin to provide rotational support in Benin and Togo during ongoing DREFs; • Operational and financial monitoring with 8 missions including 4 for finances to review and approve financial reports as a measure to ensure optimal management and speedy transfers; • <i>Ad hoc</i> technical support for shelter, PMER, programme manager, etc. • Regular monitoring of activities with an average of 01 per month to be conducted by operation and finance officers rooving between Togo and Benin ongoing floods response; • Translation of documents; • Support to organise the lessons learned workshop and finalise the report on time. 	

	Water, Sanitation And Hygiene	Budget	CHF 23,608
		Targeted persons	16,340
Indicators:		Target	
Number of breastfeeding and pregnant women		654	
Number of bibs made		70	
Number of dignity kits offered		1,354	

Number of IEC Kits designed	120
Number of households to receive chlorine tablets	998
Priority Actions:	<ul style="list-style-type: none"> • Distribution of chlorine tablets; • Design/printing of IEC WASH/Health materials for 120 volunteers; • Provision of hygiene kits to women of childbearing age, representing approximately 60% of women; • Sensitisation of people in targeted communities on how to use the kits distributed; • Deployment of 60 volunteers and 3 focal points to perform 4 monthly outreaches for community sensitisation; • Mass sensitisation within the framework of social mobilisation to prevent diseases and epidemics in this risk-prone context. • 3 radio spots and 2 messages every week for at least 3 months. • Conduct 36 interactive radio programs with discussions on key messages priority based on Community feedbacks.

Add-on Support Services

The operation will involve a total of 60 volunteers, 3 prefecture supervisors, a regional coordinator, and an accountant from the region. This DREF will be led by a project manager and his/her assistant. The staff will be supervised by the TRC Secretary General.

As regards human resources, the NS has at least 5 RDRT staff trained in cash and RDRT trainers who will also supervise cash implementation and give daily technical support to volunteers and prefecture branches. As for mobile phone networks, the NS has good partners so feasibility will not be difficult. Also, there are markets in the localities.

Will surge personnel be deployed?

A surge with a CASH profile and logistics experience will be deployed to help draw up the contract with the FSP, implement and develop tools for tracking, reconciling, and reporting cash feedback for post-distribution monitoring activities.

The TRC has a procurement procedure that is managed by a committee established in finance and account management documents approved by national governance. This procurement committee will be assisted by the IFRC team both to speed up contract award procedures as well as acquire items and deliver them in time to beneficiaries.

The TRC has a monitoring and evaluation department at the head office, with respondents in the country's five regions. Regarding implementation of this DREF, the monitoring and evaluation department will be in charge of ensuring the overall monitoring and evaluation of the operation. Consequently, it will participate actively in planning and programming the various DREF activities to ensure that field activities are carried out coherently and speedily. Together with the project manager, the monitoring-evaluation department must present, on a weekly basis, a progress report on field activities, highlighting therein challenges, if any, so that adequate solutions can be sought for activities to continue smoothly. The IFRC will periodically provide support for activity monitoring with a

comprehensive update on the progress of activities in relation to the initial DREF implementation schedule. The goal is to ensure that actions planned and financed under the DREF are performed as they should be and in time. The delegation is committed to ensuring more a rigorous financial monitoring of this project with staff specially assigned to disaster management and finances based in Benin who will ensure regular monitoring and monthly reporting of activities. In addition, the delegation will deploy other staff from its team and the regional operations team to be present in the country to offer technical support, especially cash and construction assistance. Monitoring implementation of cash activities from planning, contracting, execution to post distribution will require technical assistance from a surge requested by the NS and who will help ensure that the operational part is fully implemented as per IFRC standard operational norms and regulations.

For specific reporting of cash actions, all payments must be made by the NS but [omission in source] approval of the process and pre-contract/purchase and payment documents.

- NS management will ensure that the debt balance returned to the DREF pot.
- In addition to direct support from a separate accountant who works at national and branch levels to manage finances, adequate human resources with experience in cash transfer and voucher assistance are mobilized for the intervention.
- IFRC Finance officer based in Benin will be deployed for close support

As concerns PDM, it will be conducted through a household survey. To do this, the NS will brief 30 volunteers who will conduct the satisfaction survey. Furthermore, community representatives will be invited to the lessons learned workshop to share their thoughts regarding the assistance.

Please briefly explain the National Societies communication strategy for this operation.

The TRC has a communications department that has a communications strategy for the implementation of various projects and programmes. As regards this DREF, the communications department will be called upon to prepare or develop a communications, information, and awareness plan for communities in distress so that they have all the necessary information not only relating to the DREF implementation process but also and above all to sensitise them on the criteria and inclusive approaches that led to the selection of beneficiaries. The same will apply to information transmission on community radios in the localities covered by the DREF operation to keep the people informed about everything that is done regarding assistance to the target populations. The department will also communicate on the food and non-food kit donations that beneficiaries will receive under this DREF. Finally, the TRC's communications department will participate in lessons learned sessions and document the results thereof for dissemination.

Budget Overview



DREF OPERATION

MDRTG009 - TOGO RED CROSS FLOODS

Operating Budget

Planned Operations	284,044
Shelter and Basic Household Items	166,797
Livelihoods	0
Multi-purpose Cash	65,818
Health	10,935
Water, Sanitation & Hygiene	23,608
Protection, Gender and Inclusion	0
Education	0
Migration	0
Risk Reduction, Climate Adaptation and Recovery	0
Community Engagement and Accountability	16,886
Environmental Sustainability	0
Enabling Approaches	85,089
Coordination and Partnerships	25,560
Secretariat Services	17,046
National Society Strengthening	42,483
TOTAL BUDGET	369,133

all amounts in Swiss Francs (CHF)

Contact Information

For further information, specifically related to this operation, please contact:

- **National Society contact:** Lawson Yawo Assium, Secretary General Pi, kekelawson@hotmail.fr, +228 91030035
- **IFRC Appeal Manager:** Bhupinder Thomar, Head of delegation, bhupinder.thomar@ifrc.org
- **IFRC Project Manager;** dodzi adaha, Senior Operation Officer, dodzi.adaha@ifrc.org
- **IFRC focal point for the emergency:** Francis Salako, Operations Coordinator, francis.salako@ifrc.org
- **Media Contact** Lawson Yawo Assium, Communications Coordinator, kekelawson@hotmail.fr, +228 91030035

[Click here for the reference](#)

