



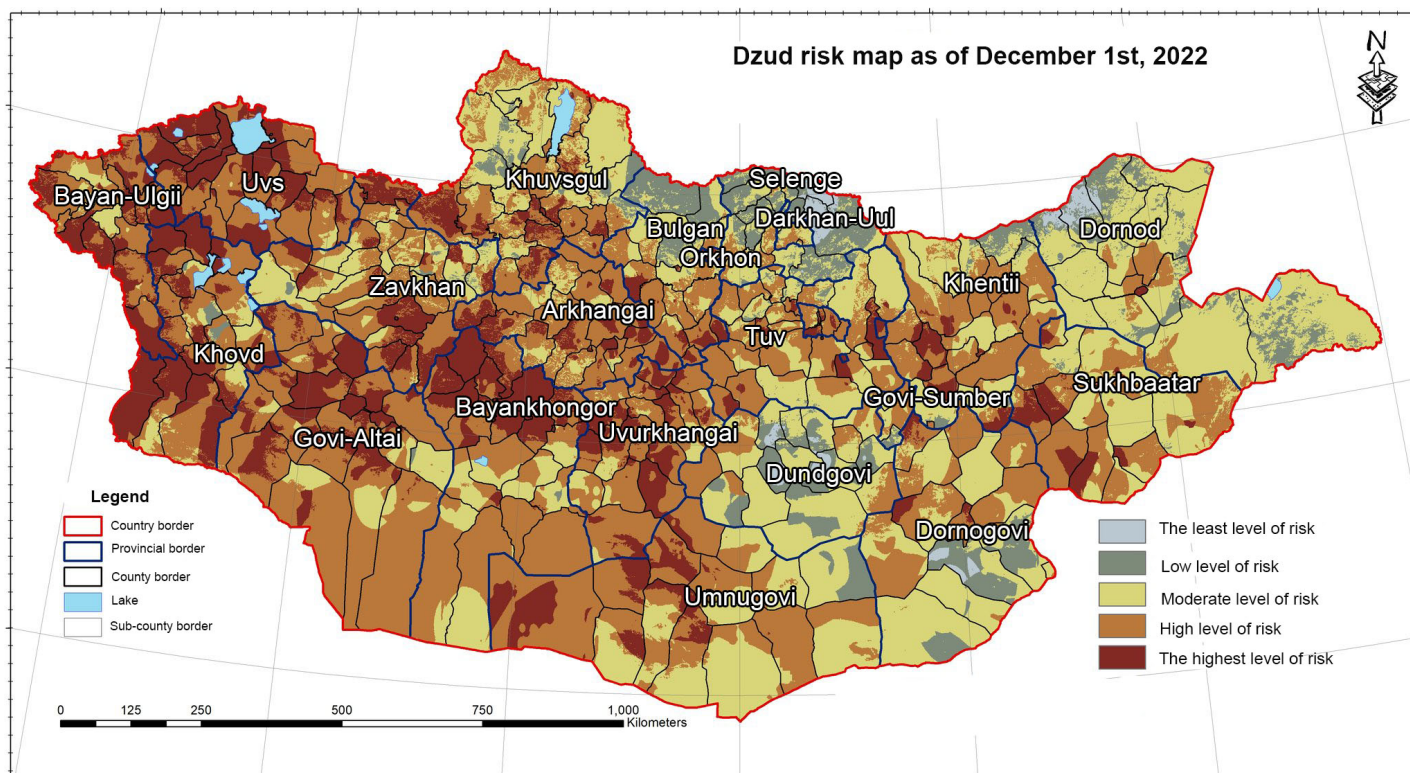
Snow is removed from the road in Zavkhan province by a joint MRCS and NEMA team. (Photo: MRCS)

Appeal: MDRMN017	DREF Allocated: CHF 149,826	Crisis Category: Yellow	Hazard: Cold Wave
Glide Number: CW-2022-000372-MNG	People at risk: 29,662 people	People Targeted: 3,700 people	
Event Onset: Imminent	Operation Start Date: 2022-12-07	Operation End Date: 2023-03-31	Operation Timeframe: 3 months
	Targeted Areas:	Arhangai, Bayanhongor, Bayan-Ölgii, Dornogovi, Dundgovi, Govi-Altai, Khovd, Ömnögovi, Övörkhangai, Sükhbaatar, Töv, Uvs, Zavkhan	

Description of the Event

Approximate date of impact

According to historical data, the peak of livestock mortality occurred in March and April. Nevertheless, December through February are the coldest months of the year, when the livestock loses most of its fat and become malnourished, so those months have the greatest impact.



Dzud Risk Map as of 1 December 2022 (Source: NAMEM)

What is expected to happen?

Summer vegetation could play a crucial role in shaping the winter situation. The winter conditions would be more severe if the summer had less vegetation and precipitation. Overall, 50 per cent of the total country had good vegetation, 30 per cent had moderate and 20 per cent had low vegetation as of 20 August; Bayan-Ulgii, Uvs, Khovd, Govi-Altai, Zavkhan, Umnugovi, Bayankhongor, Uvurkhangai provinces had the lowest vegetation as stated by the National Agency of Meteorology and Environmental Monitoring (NAMEM). (Source NAMEM: <https://www.namem.gov.mn/view/3254>).

According to the local authorities, the provinces in the western and central regions, including Bayan-Ulgii, Uvs, Khovd, Govi-Altai, Zavkhan, Uvurkhangai, and Bayankhongor provinces, haven't been able to reserve enough hay and fodder due to a poor summer situation with higher-than-average air temperatures and anomalously low precipitation. The western provinces only set aside 43.3 per cent of the emergency hay reserve and 30.5 per cent of the emergency fodder reserve, according to the State Emergency Commission.

Both the prolonged border restrictions with China and the intensification of armed conflict in Ukraine have disrupted

trade, reduced essential imports, increased import prices, escalated price increases, and dampened industrial sectors and business sentiment. As of October 2022, the inflation rate is 14.5 per cent. Despite inflation, local meat prices are still relatively low. According to a meat vendor in Khovd province, in November 2021, goat meat was sold for 80,000 – 100,000 MNT, while mutton was sold for 120,000 – 150,000 MNT. In contrast, in 2022, goat meat is being sold for 40,000 – 60,000 MNT, whereas mutton for 60,000 – 120,000 MNT.

With the anticipation of the severe winter and the previous poor summer condition, the herder community started destocking some of the weak livestock as a coping strategy to overcome the winter with minimized loss, which led to increased meat supply over the demand. As mentioned before, the meat price has decreased significantly in the provinces with high risk areas, which reduces the herders income and purchasing capacity in the inflated economy.

The ongoing destocking, used as a coping strategy, has an impact on the rise in supply and decrease in prices. This can be attributed to how the summertime drought affected the production of low-quality meat. Earlier destocking, however, could force herders to sell meat at lower prices, reducing their income and purchasing capacity given the current high inflation rate driven by the economic recession and the Ukraine crisis.

Hay and fodder prices have also increased in the region by at least by 15 per cent depending on the location. It is reported that, compared to the previous year, prices for hay and fodder increased, the price of a bale of hay (~16 kg), depending on the distance, increased from 8,000 MNT to 13,000-18,000 MNT or by 1.6 – 2.2 times, i.e. hay brought from Dornod and Selenge provinces costs 13,000 MNT in Uvurkhangaï and Arkhangai provinces, and 16,000-18,000 MNT in Khovd and Bayan-Ulgi provinces.

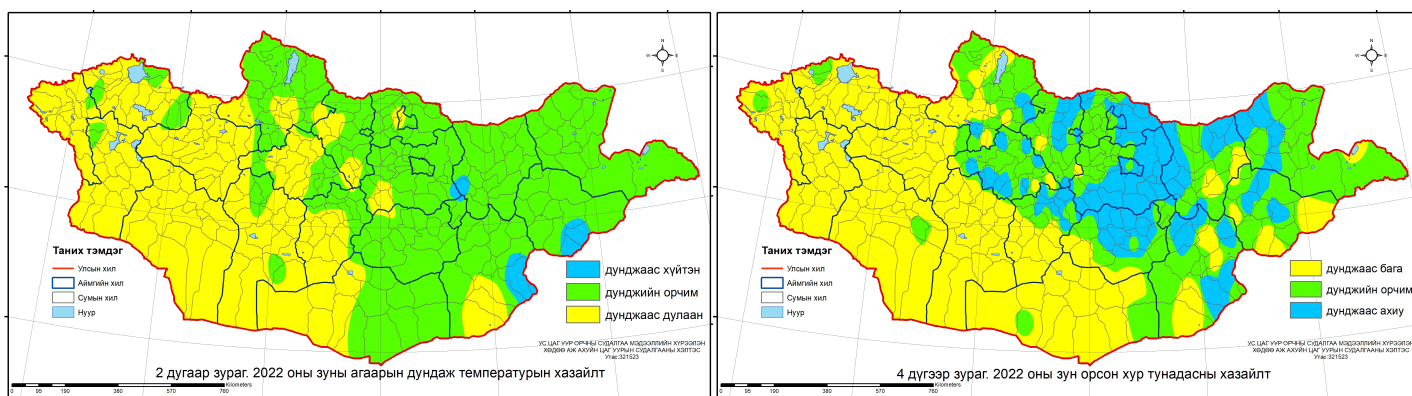
The increase in hay prices is explained by a sharp rise in the cost of fuel for harvesting and transportation, as mentioned above, the yield of hay per unit of hay area was reduced due to unfavourable summer conditions. Bran, which is a wheat milling by-product, currently costs increased by 20-25 per cent and prices are expected to increase during the winter. Although the demand for hay and concentrate is higher than last year and even available in local markets, due to the price, it is not affordable for cash-strapped herder households.

The current economic situation puts the herder population in cul-de-sac where they can't sell livestock products to have cash on hand while they can't buy enough amount of hay and fodder to feed the livestock which has a chance to survive the winter without cash. Livestock-based livelihoods are at high risk of being affected by severe winter and economic recession.

Currently, the task force on Dzud risk, National emergency management agency, National Agency for Environmental Monitoring have issued warnings and forecasts of severe cold wave in the western region through the dzud risk map and the on-site dzud risk assessment. The malnourishment from the poor summer conditions to the livestock and the socio-economic pressure from the recession intensifies the vulnerability of the herder households even more is what makes this event exceptional. Usually, the herder households will destock the weak livestock and sell to prepare for the severe winter but due to the drought in the summer, meat production is low and there's heavy supply of meat on the market already therefore the meat price is decreasing, so is the purchasing capacity and income of the herders and the impact is intensified by the high inflation.

As stated by the National Agency for Environmental monitoring and Meteorology, the extreme cold had been anticipated (issued on 22 November) starting from 28 November to 2 December, Darkhad valley, Khentii mountains, near Khurenbelchir, in the head of Zavkhan river, the temperature would reach -42 to -47 degrees Celsius during the night, -29 to -34 degrees Celsius during the day, Altai, Khangai, Khuvsgul mountainous areas, near the basins of of Eg, Uur, Ider, Tes, Tuul, Terelj river, the temperature would reach -36 to -41 degrees Celsius during the night and -24 to -29 degrees Celsius during the day. In Southern parts of the gobi area, the temperature would reach -18 to -23 degrees Celsius during the night, -9 to -14 degrees Celsius during the day, in the other parts of the country, the average degree would be -29 to -34 degrees Celsius during the night, -19 to -24 degrees Celsius during the night. The forecast was materialized during 28 November - 2 December and due to precipitation and snowstorms in the central and eastern provinces during 24-25 November 2022. As of 2 December, in Uvs and Khovd provinces, 216 livestock from 12 households have perished, 2 gers have been completely destroyed, 4 people went missing and 4 found, 2 of them are being hospitalized. The main roads in Arkhust, Bayandelger, Erdene, Bayanjargalan counties of Tuv province are blocked by the snow and local authorities are cleaning the snow. Meanwhile, according to the National Agency for Meteorology and Environmental Monitoring, the southern provinces with low precipitation are expected to have strong dust storms.

NAMEM has issued an official letter to the Ministry of Food, Agriculture and the Light industries on the phenomenon mentioned above could bring serious disruption upon the normal performance of the energy, heating and transportation, agriculture and education sectors. Regarding the weather phenomenon, Capital Governor and Ulaanbaatar City Governor, based on consultation with the Minister of Education and Science issued an order on some measures to be taken to reduce the potential risk of weather phenomena and manage traffic jams and delays. As part of the order, on 28 November, all levels of schools and kindergartens in the capital will be taught online, at least 60 per cent of the employees of some institutions in the capital will work from home, and certain coordination will be made to manage transportation on certain streets and roads.



Summer temperature deviation map

Summer precipitation deviation map

Why your National Society is acting now and what criteria is used to launch this operation.

The maps represent i) summer temperature deviation map, the yellow area represent the higher air temperature than average, ii) summer precipitation deviation map, the yellow area represent the lower precipitation than average (Source: NAMEM).

NAMEM released the Dzud risk map on 2 December 2022, which indicates that 16 per cent of the Mongolian territory is at the highest level of risk, 43 per cent is at high level of risk of Dzud, 33 per cent is at moderate risk, 10 per cent is at low and the least level of risk. The most soums with high-level risks are located in Bayan-Ulgii, Uvs, Zavkhan, Bayankhongor, Govi-Altia, Uvurkhangai, Bayankhongor, a few soums in Dornogovi, Sukhbaatar and Dundgovi are also identified to be a very high level of risk. According to NAMEM, Dzud index has a high correlation to livestock mortality (1940 - 2015 plot of Dzud index, drought index and livestock, NAMEM), also, the vegetation index plays a major role in the shaping of winter (Trigger update variation, 501). The high temperature and low precipitation caused severe drought in the summer, which is the reason why the livestock couldn't accumulate enough fat to overcome the winter, and the meteorology office stated anomalous low temperatures in late December. As mentioned before due to the drought and economic inflation, meat price has been significantly reduced, therefore decreasing the income of herders. Combined with the severe winter, the herder households are at risk to fail to meet the immediate basic needs.

Scope and Scale

Considering the historical data, peak of livestock mortality is from February to April and the January is the coldest month where the livestock is exposed and became malnourished, the livestock perishes in mass numbers due to the direct cold exposure or malnutrition. The herder households solemnly rely on their livestock for the food and income, losing the livestock would cause the herder households the loss of livelihoods and food insecurity, enormous psychological stress.

According to vulnerability analysis, the population most exposed to the Dzud are the herder population who have up to 400 livestock as the herders who have more than 400 livestock been considered to have more availability to recover from Dzud damage as there's more chance, they will have animals left after the Dzud. There are about 51,000 herders (National Statistics office) in those 5 provinces meanwhile 37,000 herders who own 100-500 livestock who are identified to be more vulnerable to the cold wave. Govi-Altai, Arkhangai and Uvurkhangai provinces were assessed to be at moderate risk level.

Previous Operations

Has a similar event affected the same area(s) in the last 3 years?	Yes
Did it affect the same population groups?	Yes
Did the National Society respond?	Yes
Did the National Society request funding from DREF for that event(s)?	Yes
If yes, please specify which operations	MDRMN011, EAP2020MN02, EAP2019MN01

If you have answered yes to all questions above, justify why the use of DREF for a recurrent event, or how this event should not be considered recurrent

Like any other disaster, socioeconomic factors may exacerbate cold wave or Dzud impacts. Because of the Ukraine crisis and the global economic downturn, Mongolia's inflation rate has reached its highest level since 2008, standing at 15.4 per cent. Landlocked between China and Russia, Mongolia is also heavily dependent on imports. The cost of living has significantly increased since the incident due to inflation, which has put a tremendous strain on the herders' finances. In Dzud-anticipated provinces, the majority of herder households appear to have tried hard to stock up on hay or other supplemental, conserved feed by making or purchasing it. Poor pasture yield and increased hay prices are the reasons why this failed. Additionally, since May 2022, commercial banks have closed credit lines, limiting the herder's preferred coping strategy.

Specify how the lessons learnt from these previous operations are being used to mitigate similar challenges in the current operation

Mongolian Red Cross Society (MRCS) identified two main challenges that persisted after reviewing the lessons learned from the previous operations:

1. Inability to timely reach targeted households in remote areas: Nomadic herder households travel to remote areas in search of better pastures or geographically advantageous locations for their livestock, and they are sometimes unable to reach the distribution point or be contacted. Due to road conditions and landscapes, most locations are difficult to reach by ground transportation. As a mitigation, MRCS planned to engage the county governors as Branch Disaster Response Team (BDRT) members and request tracking information on herders who are on the move. Local midlevel branches have agreed with local emergency management authorities to mobilize some vehicles from the local emergency management authorities to go on a joint mission to deliver some portion of the assistance to the herders on the move, allowing for safer transportation.

2. Mismatch of beneficiary data: For the past six years, MRCS has been implementing cash transfer programming, and with each implementation, the mismatch between the beneficiary data collected by MRCS and the beneficiary data at the financial service provider has been a persistent and time-consuming discrepancy. To address this issue, MRCS decided to use the corporate gateway service recommended by the Financial Service Provider (FSP). It was intended to allow MRCS to correct the mismatches without involving the bank, thereby reducing the time spent on email exchanges. After a few attempts, it was discovered that the MRCS financial software is not fully compatible with the service and will not allow certain functions. There is currently a discussion about potential software updates and configurations to move forward.

Current National Society Actions

Coordination	<p>MRCS remained vigilant and has been monitoring the situation since the start of the dry spell. MRCS also has been in coordination with National Emergency Management Agency (NEMA) and NAMEM observing the deteriorating situation. MRCS national headquarters requested its provincial branches to submit primary assessments regarding drought situations in their respective provinces to identify the impacts of the droughts and gaps as well as needs. MRCS has been updating the IFRC Country Cluster Delegation in Beijing and its Participating National Societies with regular updates on the winter situation. The Humanitarian Country Team (HCT) had a meeting on 29 November exclusively for the Dzud situation and the Secretary General, Senior Officer of Climate Change and Disaster Management department of MRCS attended the meeting. During the meeting, NAMEM and State Emergency Commission updated the members on the current situation. UN Resident Coordinators office stated of potential response with the support from UN OCHA. MRCS will be exchanging information with the HCT members and essential stakeholders rapidly on the current situation.</p>
Assessment	<p>Rapid assessments have been conducted by the BDRT in the provinces with extreme droughts on 18-24 July to assess the impact of the drought, identify the damages and the needs and occupy more detailed information on the situation. The groups who had been identified as the most exposed and vulnerable are the financially vulnerable herder households who have a small herd with additional socio-economic vulnerabilities such as disability, single-parented household where they have already lost considerable portion of their livestock and eventually could face the food insecurity, fatal financial condition. Teams investigated if the drought condition affected the crop cultivation and production but due to lack of arable land, there weren't many agricultural farmers in the drought affected areas who have been impacted by the drought.</p> <p>National Disaster Response Teams (NDRT) members have been deployed on 26 November - 3 December 2022. Headed by Director of Climate Change and Disaster Management department of MRCS and three NDRT members went on a mission to identify the needs and explore the depth of the situation in the Western region including Zavkhan, Govi-Altai, Arkhangai, Uvs provinces. According to the interviews they had with the herder households, the livestock are still not yet impacted by the severe winter and if the herders could feed the livestock with decent amount of hay and fodder, the livestock could still make it through January and February. The chances of mortality will rise if they couldn't find the source of nutrition as soon as possible. Due to the severe winter condition and livestock health, the meat price has dropped which makes the herders unable to sell their livestock and the herders lack financial resources. Staple food prices have increased rapidly and the purchasing power of herder households are getting lower each day. The hay and fodder prices have also increased and an average is being sold at 17,000 MNT (3-4 times higher than the normal rate) in the at-risk provinces. The herders have started taking loans from the bank to prepare for the winter. The herder households are under a great deal of stress where they worry about how to keep their herd alive through this winter given the situation.</p> <p>Currently, 21,803 herder households (approximately 13,000 households from</p>

the at risk provinces) are going on otor, where the households will move from their home seeking better pastures for the livestock. Mostly, the households will go to remote and isolated areas which put the vulnerable population including pregnant women, children and seniors, disabled people, and people with chronic diseases of the households at more risk since the household will be isolated from health and public services.

Movement Partners Actions Related To The Current Event

IFRC	MRCS has been updating IFRC Country Cluster Delegation in Beijing since the drought conditions in July 2022. The IFRC Asia Pacific office has assisted MRCS relevant staff accordingly in developing the required documents for DREF and Imminent DREF according to the new guidelines.
ICRC	Not available
Participating National Societies	Currently, MRCS is working together with the Australian Red Cross to revise the trigger model on the existing early action protocol (EAP). The existing EAP has already been triggered in 2020 and needs to be updated before the activation.

Other Actors Actions Related To The Current Event

Government has requested international assistance	No
National authorities	Currently, the task force on Dzud risk, NEMA, NAMEM have issued warnings and forecast of severe cold wave in the western region through the Dzud risk map and the on-site Dzud risk assessment.
UN or other actors	World Vision in Mongolia is currently implementing anticipatory action in Zavkhan, Bayankhongor, Govi-Altai, Khovd provinces reaching up to 1000 households to allocate 90-100 USD to each household. UNICEF Mongolia is planning to implement nationwide anticipatory action where essential sanitary items are distributed to the kids who are staying at the dormitory, provision of standard water containers, wash training, nutrition screening, micronutrient supplement to the children, training for teachers on e-learning methodology, e-learning equipment, midwifery kit, essential medicine, mental health and psychosocial support services. The exact locations are not known yet but are currently classified as nationwide. Both organizations are the members of HCT in Mongolia and MRCS are exchanging essential information through 5W sheet among the humanitarian actors to avoid duplication of efforts and deliver timely action with appropriate scale.

Are there major coordination mechanisms in place?

MRCS has close bilateral relationship with the key stakeholders including the National Emergency Management Agency, National Agency for Meteorology and Environmental Monitoring, Ministry of Food, Agriculture and Light Industries, Ministry of Labor and Social protection. MRCS is a member of State emergency commission and the branch managers are the member of provincial emergency commission. Humanitarian country team is active and sharing regular updates among the members.

Anticipated Needs



Multi purpose cash grants

Livelihoods of nearly a couple thousands of herders are on the verge of mass mortality because of the severe drought in the summer and the anticipated extreme cold wave. The poor summer conditions have left the herders with insufficient resources to prepare hay and fodder for their livestock when the livestock are already malnourished from not getting enough fat reserve during the summer. Currently, 30 per cent of the total livestock in the country are in low health condition, according to the State Emergency Commission. Socio-economic impacts intensify this situation as the annual inflation rate in Mongolia picked up to 14.5 per cent in October of 2022, from 13.8 per cent in the previous month according to the Bank of Mongolia.

The herders started using the destocking weak livestock as a coping strategy which showed a great impact on contributing to the increase in meat supply and lower meat prices which is intensified by the drought condition in summer contributing to low quality of meat production. Earlier destocking forces herders to sell meat at lower prices, hence resulting in lower income and lower purchasing capacity with the existing high inflation rate driven by the economic recession and Ukraine crisis. Through assessment and analysis conducted on first and secondary information, the vulnerable herder households could meet their specific needs with multi-purpose cash grants.



Health

As mentioned before, the herder community is under great stress due to the fear of losing the source of livelihood, the economic situation, if they start losing the livestock they will suffer more. Considering the situation and the risk, MRCS will organize refresher trainings for volunteers in the high risk areas where they will revive their psychosocial support (PSS) skills and strategy with the given context. Volunteers will provide the PSS to the herders in the high risk areas and the children who are staying at the dormitory away from their herder parents.



Protection, Gender And Inclusion

MRCS is continuously monitoring the situation to identify cases of domestic and gender-based violence, on women and children, especially girls. According to the initial assessment, the targeted households, children who are staying at the dormitory, are likely to feel more stress due to the situation. Therefore, PSS will be provided via phone to households in remote areas and in-person visits to children who are living in dormitories. Unconditional cash assistance will be delivered electronically in which the dignity of affected population is protected.

Operational Strategy

Overall objective of the operation

The DREF operation aims to minimize the impacts of the severe winter upon approximately 3,700 people from 1,000 vulnerable households who are in the locations with the highest risk of cold wave.

Operation strategy rationale

Due to the poor summer vegetation, the herders in the western region haven't been able to reserve enough hay and fodder to feed their livestock through winter, where the extreme cold wave and snow storms are expected. The harsh winter could cause mass livestock mortality and destroy many livelihoods. The current economic recession intensifies the impact of this weather phenomenon. The following activities will be implemented in order to minimize the effects of the harsh winter upon the herder households.

Unconditional, unrestricted multi-purpose cash grant: Cash grants will allow the herder households to meet their various needs of immediacy such as the purchase of hay and fodder, livestock medicine, warm clothes, food, fuel and communication costs.

The cash grants will be transferred electronically to their bank accounts through the FSP. Khan bank the FSP with whom MRCS has been working together under the contract for last 7 years to implement the cash transfer programme. Since the Khan bank has branches in each county, the herders will be able to utilize the cash to make purchase.

Due to the high needs of hay and fodder in the western regions, the hay and fodder supply is continuing and growing therefore there will be enough hay and fodder on the market available for the herders. The transfer value is an estimation of the Minimum Expenditure Basket (MEB) and the household income study initiated by MRCS in 2019. The study established the consumption requirements to meet basic needs for a family of five members, mainly household expenditures and income, analyzed against the government's published data on Household Socio-Economic Survey (HSES).

The difference between MEB and the household's income could be the amount of transfer value. The cash grant value is adjusted to reflect the current context and assessment findings.

Targeting Strategy

Who will be targeted through this operation?

1st stage-criteria:

- must have min. 200- max. 400 livestock in sheep head number;
- must be permanent resident of the location with very high or high risk of Dzud indicated in the Dzud risk map.

2nd stage-criteria: must meet following one of the criteria:

- Be single headed household with 3 or more children under 16;
- Household with disabled member;
- Household with lactating or pregnant woman;
- Senior herder (older than 60) who herd his livestock by himself;
- Household with 5 or more children under 16.

According to the 2021 data from National Statistics Office, there are 44,960 herders who have 200-400 livestock: 3,119 in Bayan-Ulgii, 3,543 in Govi-Altai, 3,930 in Zavkhan, 3,878 in Uvs, 3,921 in Khovd, 5,946 in Arkhangai, 4,730 in Bayankhongor, 5,431 in Uvurkhantai, 1,640 in Dornogovi, 2,983 in Dundgovi, 2,451 in Umnugovi, 3,388 in Sukhbaatar province.

Basing on the scale of the high risk area in each province, the following distribution is planned: 200 households in Uvs province, 150 households in Bayan-Ulgii province, 100 households in Umnugovi province, 100 household in Uvurkhantai province, 50 households in Khovd province, 50 households in Zavkhan province, 50 households in Arkhangai province, 50 households in Govi-Altai province, 50 households in Bayankhongor province, 45 households in Dornogovi province, 45 households in Dundgovi province, 45 households in Sukhbaatar province, 60 households in Tuv province.

Explain the selection criteria for the targeted population

MRCS will use its own its own eligibility criteria for the Dzud early actions which is 2-phased eligibility criteria. In the 1st phase the criteria will see if the herder household is someone who actually herds the livestock themselves and whose livestock are the only source of livelihoods to themselves.

According to historical analysis, the population most exposed to the Dzud is the herder population who have up to 400 livestock. The previous threshold for the beneficiaries indicated that the beneficiary herder household must have had 50-200 livestock but after rigorous discussion and study, it was changed to up to 400 livestock.

To identify true herders (not idle herders who have livestock registration but don't actually herd the livestock themselves but rather have someone else to do it) and reduce the risk of idle herders are engaged in the program, the threshold was lifted to 400, this way the idle herders who usually have small herd will be excluded. With the previous criteria of 50-200 livestock, the true herders who have livestock more than 200 were excluded when they really needed the assistance.

With the current update, it will make the targeting more accurate, and make the programme more efficient and effective. Also, the herder household must be a permanent resident of the locations where in the Dzud risk map had the very high or high level of risk. Considering the chances that the risk of the households with small herd (less than 200) could be excluded, the assistance could be allocated basing on the official request from the county governor and the primary level branch verification.

In the 2nd phase, the criteria will see if the herder household meets the socio-economic vulnerability criteria which are:

- Single headed household with three or more children under 16.
- Household with disabled member.
- Household with lactating or pregnant woman.
- Senior herder (older than 60) who herd his livestock by himself.
- Household with 5 or more children under 16.

Total Targeted Population

Women:	914	Rural %	Urban %
Girls (under 18):	699	100 %	%
Men:	1,543	People with disabilities (estimated %)	
Boys (under 18):	544	15.00 %	
Total targeted population:	3,700		

Risk and security considerations

Please indicate about potential operational risk for this operations and mitigation actions	
Risk	Mitigation action
The current economic situation and political tensions are causing severe inflation in Mongolia as it's market is heavily dependent from the import. Most of the livestock kit contents are produced locally in Mongolia but the ingredients of the contents and the fish oil are imported. Due to the reasons mentioned above, the supply	MRCS have existing pre-agreements with the suppliers which will reduce the risk and the existing bi-lateral collaboration with the Mongolian Customs General Administration will fasten the progress of the procurement.

chains are restrained causing the limitation of the goods available on the market.

The security framework of the National Society and IFRC is not fully applied in the operation.

The National Society's security framework will apply throughout the duration of the operation to their staff and volunteers. In case of need for deployment for personnel under IFRC security's responsibility, including surge support and integrated PNS, the existing IFRC country security framework will apply. All IFRC must, and RC/RC staff and volunteers are encouraged, to complete the IFRC Stay Safe 2.0 e-learning courses.


Please indicate any security and safety concerns for this operation

According to our initial assessment, the transportation of the items could be delayed due to the snow and storm as more precipitation is anticipated in the coming months. To mitigate the potential risk, MRCS is engaging with NEMA and local emergency management authorities to pre-agree on the utilization of their vehicles in anticipation transportation vehicle challenges occurring at the time of the implementation period.


Planned Intervention


	Secretariat Services	Budget	CHF 4,260
		Targeted Persons	0
Indicators		Target	
# of monitoring visits conducted		5	
Priority Actions:		1. Conduct monitoring visits.	

	Community Engagement And Accountability	Budget	CHF 5,012
		Targeted Persons	3700
Indicators		Target	
# of people reached with CEA activities		3700	
Priority Actions:		1. Conduct Communications activities (including costs for hotline number, satellite phone, internet service, which will also include PSS follow up activities via mobile phone). 2. Conduct visibility activities (e.g. certificates, banners and media promotion)	


	National Society Strengthening	Budget	CHF 14,226
		Targeted Persons	30
Indicators		Target	
# of lessons learnt workshop conducted		1	
Priority Actions:		1. Provide administration support for the operation (e.g. cost for stationery, office equipment and maintenance). 2. Organize lessons learned workshop to identify the challenges and successes of the operation.	

	Multi-purpose Cash	Budget	CHF 126,328
			3700

		Targeted Persons	
Indicators		Target	
# of households who received cash assistance		1000	
	Priority Actions:	1. Provision of unrestricted, unconditional multipurpose cash grants to 3,700 people from 1,000 households 2. Provision of certificate of aid for the targeted population which will include key messages from "Be Ready" module on climate smart agriculture. 3. Conduct 30 ground travels to the at-risk communities for monitoring, on-site support by both MRCS and IFRC.	

	Health	Budget	CHF 0
		Targeted Persons	3700
Indicators		Target	
# of people who received PSS services		3700	
	Priority Actions:	1. Provision of the PSS through in-person visits and mobile phone to the targeted herder communities and the children of the herders who are staying at the dormitory.	

	Protection, Gender And Inclusion	Budget	CHF 0
		Targeted Persons	0
Indicators		Target	
# of child safeguarding risk analysis conducted		1	
	Priority Actions:	1. Conduct child safeguarding risk analysis for child-friendly, safe, and integrated in the operation/project implementation. 2. Set criteria and needed supporting mechanisms to ensure inclusion and participation of the identified vulnerable groups in the programme, including CEA and cash.	

		Budget	CHF 0
			3700

	Risk Reduction, Climate Adaptation And Recovery	Targeted Persons	
Indicators		Target	
# of people who received key messages on Climate smart agriculture		3700	
	Priority Actions:	1. Disseminate key messages on Climate smart agriculture from the disaster risk reduction module "Be ready" (Jointly developed by National Emergency Management Agency, MRCS, World Vision) to targeted communities.	

About Support Services

How many staff and volunteers will be involved in this operation. Briefly describe their role.

Refresher training for volunteers will be provided to ensure effective response. A total of 40 members of BDRT are expected to engage in the operation for management at the local level such as distribution, community engagement and accountability, monitoring, evaluation.

Will surge personnel be deployed? Please provide the role profile needed.

If there is procurement, will it be done by National Society or IFRC?

Logistics for the cash transfer programming will include the bank transfers to the recipient beneficiaries via Khan bank who has been working with MRCS since 2016. MRCS and Khan Bank work together under the Framework Agreement which is revised annually. The DREF budget will cover the bank fees related to these transfers. Transport and distribution costs will be included in this DREF budget. According to brief market assessment, all provinces have available and functioning markets which make it feasible for conditional cash grant.

How will this operation be monitored?

MRCS planning, monitoring, evaluation and reporting team members will monitor the implementation of the DREF operation in the field with support from NDRT members, with the participation of IFRC. An internal review by MRCS of the DREF operation will be carried out after the operation in Late January or early February. At least, two teams will be deployed to monitor the operation implementation in the most at-risk provinces.

Please briefly explain the National Societies communication strategy for this operation.

With support from the regional communications unit in Kuala Lumpur, the IFRC CCD communications delegate will support the production of news stories to be published on the IFRC website. Participating National Societies will be provided with information on the response through Newswire and information bulletins. MRCS hotline number for the complaint and feedback is active and MRCS staff are attending humanitarian country team and state emergency commissions meeting regularly.

Contact Information

For further information, specifically related to this operation please contact:

- **National Society contact:**

Munguntuya Sharavnyambuu, Director, Climate change and disaster management department, munguntuya.sh@redcross.mn, +976 99311909

- **IFRC Appeal Manager:**

Olga DZHUMAeva, Head of Country Cluster Delegation for East Asia, Beijing, olga.dzhumaeva@ifrc.org

- **IFRC Project Manager:** Xiao Zheng, Officer, Disaster Risk Management, xiao.zheng@ifrc.org

- **IFRC focal point for the emergency:** Nusrat Hassan, Operations Coordinator, opscoord.eastasia@ifrc.org

- **Media Contact:**

[Click here for the reference](#)