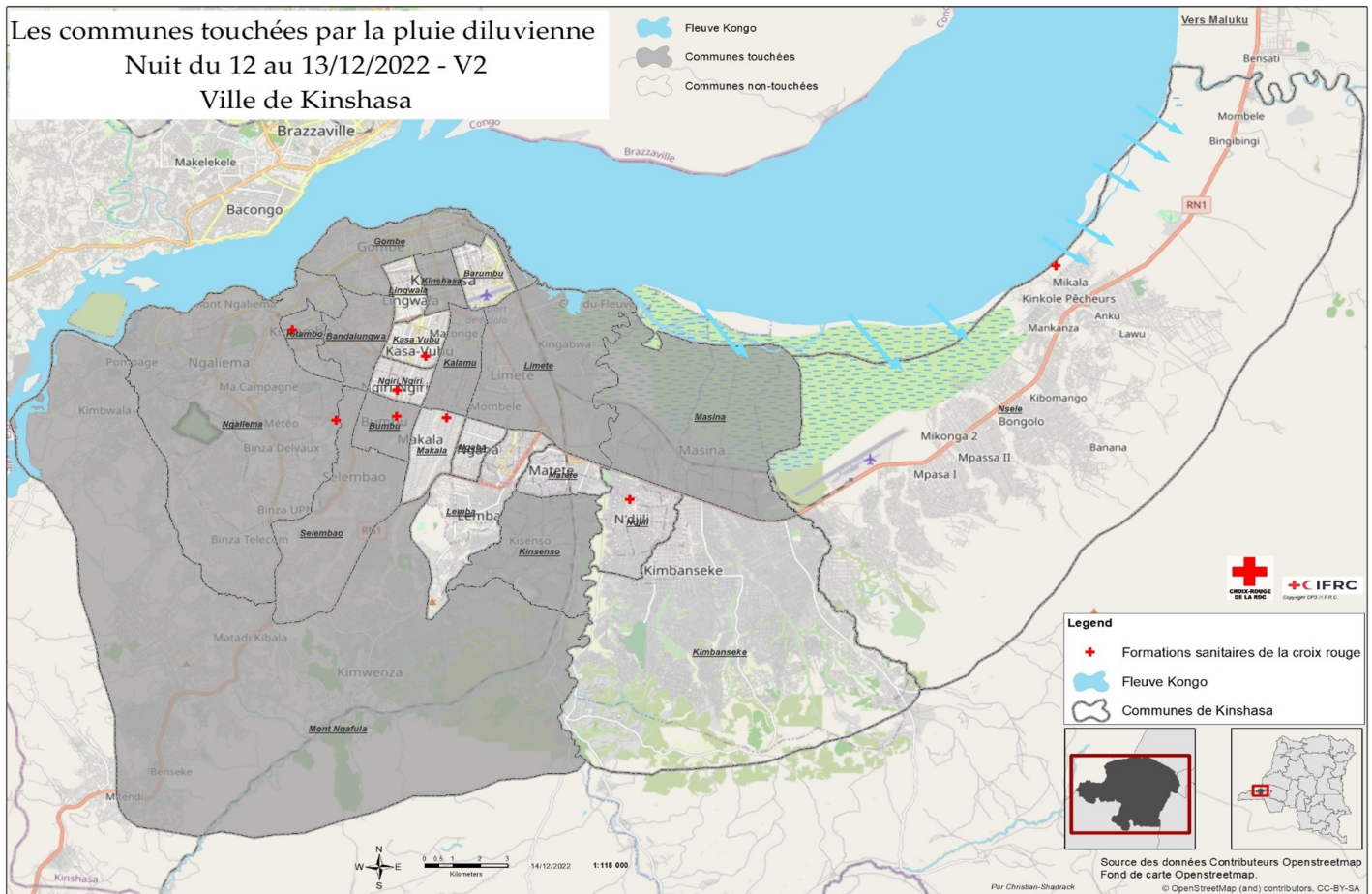




Appeal: MDRCD039	DREF Allocated: CHF 398,745	Crisis Category: Orange	Hazard: Flood
Glide Number: FL-2022-000376-COD	People Affected: 84,624 people	People Targeted: 9,000 people	
Event Onset: Sudden	Operation Start Date: 2022-12-28	Operation End Date: 2023-04-30	Operation Timeframe: 4 months
	Targeted Areas:	Kinshasa	

Description of the Event



What happened, where and when?

On December 13, 2022, from 2 hours to 7 hours 30 minutes, continuous torrential rain occurred in the city of Kinshasa that caused major flooding.

Following the first assessments carried out, the DRC Red Cross was able to establish on 16 December 2022, a state of the situation with 16 municipalities flooded out of the 24 in the province of Kinshasa. These are Mount Ngafula, Ngalieima, Ngaba, Selembao, Kitambo, Bandalungwa, Bumbu, Kisenso, Ngiri-Ngiri, Barumbu, Matete, Limete, Masina, Makala, Gombe and Kalamu.

About 84,624 people (14,104 households) are affected by the floods with 33,510 directly in need, i.e. the 5,585 flooded houses of which 507 were destroyed. Damage to infrastructure, road network, and agro-pastoral reserves of several farms and households was also identified. 169 people who died were recovered from the rubble, 6 people were missing and 87 people were injured.

In view of the seriousness of the damage, the Prime Minister of the DRC convened a crisis meeting on the afternoon of 13 December in which the following decisions were reportedly taken:

- Instructions to the services concerned to make every effort to find the missing persons
- Taking charge of the care of the wounded
- And ensure a dignified funeral for the dead

These torrential rains continue to fall almost every two days in the city of Kinshasa, and several families have been prevented from abandoning their homes and properties for their safety; this makes it more vulnerable and riskier to

aggravate the already precarious humanitarian situation of these people who have lost everything. In fact, according to weather forecasts (Weather for Kinshasa in January 2023: Temperatures and climate table - Climate-Data.org), there will be heavy rainfall in the city of Kinshasa.

More detailed assessments will be conducted to accurately determine the extent, level of damage and needs to be expressed. As the rainy season is still ongoing until the end of December, the situation may continue to deteriorate with further rains expected in the area.



Summary table of the assessment conducted by the CRRDC with the support of the provincial authorities' conclusions of 16/12/2022

N°	Districts	Number of quarters affected	N° Of flooded houses	Number of destroyed houses	N° of Deaths	N° of missing people	N° of affected families (6pers/H H)	N° of people injured (first aid provided by NS)
1	Mont Ngafula	9	267	147	40	0	1068	0
2	Ngaliema	7	300	99	61	0	411	0
3	Ngaba	4	212	7	0	0	848	55
4	Selembao	6	145	20	17	6	151	28
5	Kitambo	3	29	3	5	0	32	0
6	Bandalungwa	3	981	36	4	0	4905	0
7	Bumbu	10	380	28	0	0	420	0
8	Kisenso	3	78	3	0	0	98	0
9	Ngiri-Ngiri	3	208	2	0	0	208	0
10	Gombe	1	121	12	0	0	165	0
11	Barumbu	2	196	26	0	0	980	0
12	Matete	2	620	33	0	0	690	0
13	Limete	8	510	23	3	0	560	0
14	Masina	4	348	12	0	0	348	4
15	Makala	14	530	44	0	0	580	0
16	Kalamu	5	660	12	0	0	2640	0
	Total	81	5585	507	130	6	14104	87

Flooded houses.

Floods Assessment ; 16/12/2022

Scope and Scale

The floods recorded since the 13th night have caused significant damage to the communities. More than 14,000 households were registered as affected during the CRRDC rapid assessment with provincial authorities. As of December 16, at the end of the assessments, the rains continued in the city of Kinshasa, raising fears of an increase in the number of people affected.

The damage is significant, including the destruction of homes, basic infrastructure, and water, more than a dozen schools, health centers, and farms, loss of property and livelihoods, and food stocks. In addition, national road number 1 linking Kinshasa and the country to the port has been cut, requiring Government intervention to restore the link during these periods of heavy trade with other cities and the entry of products into the country.

- Sieze (16) out of 24 communes in the city of Kinshasa are affected. That is 81 neighborhoods, 5585 houses flooded by water, including 507 destroyed houses. The following communes were in ascending order of the number of flooded houses: Kitambo (29), Kisenso (78), Gombe (121), Selembao (145), Barumbu (196), Ngiri-Ngiri (208), Ngaba (212), Mount Ngafula (267), Ngaliema (300), Bumbu (380), Matete (620), Limete (510), Masina (348), Makala (530), Kalamu (660), Bandalungwa (981).
- The communes with the most destroyed houses are in peri-urban and rural areas including Mount Ngafula (147), Ngaliema (99), Ngaba (7), Selembao (20), Kitambo (3), Bandalungwa (36), Bumbu (28), Kisenso (3), Ngiri-Ngiri (2), Gombe (12), Barumbu (26), Matete (33), Limete (23), Masina (12), Makala (44), Pen (12).

Neighboring municipalities and households not directly affected are nevertheless indirectly affected by the displacement of several homeless households. The affected population was forced to leave their homes and found refuge with host families for both to erect makeshift shelters that remain vulnerable to bad weather, especially in this rainy weather.

Socio-environmental living conditions have deteriorated further due to the impact of these floods on water points, latrines, and household hygiene conditions. Especially those now homeless. Water points and latrines have been damaged in flooded areas and remain inadequate in host areas; as a result, access to drinking water, hygiene, and sanitation are not only limited but even low.

The risks arising from the situation described above are significant for health, living conditions, and even access to basic necessities.

Waterborne diseases have increased due to latrine overflow and poor hygienic conditions

The supply of food to the city of Kinshasa from Kongo Central province and the ports of Matadi, Boma, and Ledia could pose problems with the end-of-year festivities with access constraints and the destruction of certain agro-pastoral products located from some farms and households. Speculation on the non-supply of the city of Kinshasa begins to increase the prices of food on the Kinshasa market.

Based on the rapid assessments that took place from 13 to 16 December 2022, the immediate needs of the population are as follows: First aid, NIF (blankets, kitchen utensils, mats, insecticide-treated mosquito net, soap, hygiene kit (women of childbearing age)), environmental sanitation (cleaning of gutters to allow easy drainage of water), distribution of tarpaulins (for the protection of remaining goods) and hygiene promotion.

Previous Operations

Has a similar event affected the same area(s) in the last 3 years?	Yes
Did it affect the same population groups?	Yes
Did the National Society respond?	Yes
Did the National Society request funding from DREF for that event(s)?	Yes
If yes, please specify which operations	MDRCD029

If you have answered yes to all questions above, justify why the use of DREF for a recurrent event, or how this event should not be considered recurrent

- On 19 November, rising water levels following torrential rainfall that began in October 2019 in the areas bordering the Ubangi, Congo, and their forests with peak on the night of 25 to 26 November, causing major flooding in seven provinces of the Republic.
- Democratic Republic of Congo: North - Ubangi, South - Ubangi, Mongala, Bas -Uele, Haut-Uele, Maniema, South Kivu, Kasai, Kinshasa, and Tshopo, creating a humanitarian catastrophe.
- Kinshasa province was among the most affected provinces with about 18,840 people affected.
- The 2019 response was a response to massive flooding across the country but in terms of concentration of impact compared to superficial, the 2019 floods were not as critical as the recent floods which are also more localized. In 2019 there were only 10 municipalities flooded with 54 injured and forty deaths while the assessments conducted by the CRRDC on 16 December 2022 have identified 16 municipalities out of the 24 are already flooded with 84 injured and 169 deaths.

Specify how the lessons learnt from these previous operations are being used to mitigate similar challenges in the current operation

During the MDRCD029 flood response, the CRRDC learned several lessons that it will take into account in the current implementation.

In the provision of shelter provided in the assistance, contacts between the owners of the plots and the tenants had been recorded, each claiming to be the beneficiary of the assistance. In addition, the building materials distributed to beneficiaries, most of whom were tenants, were confiscated by the lessors. The problem of belonging to the plot also arose for reconstruction cases. Several tenants were evicted from the landlords' plots but others brought these shelters to build them in their own plots.

As part of this intervention, the CRRDC based on the resolutions of the lesson workshop learned from operation MDRCD029, the CRRDC will strengthen awareness and communication on the assistance to be provided engaging provincial institutions, community leaders, and donor representative groups and tenants for an understanding and harmony of the intervention.

Considering, however, the time of implementation and change of perspective which can sometimes take a little time, and that the municipalities have been mainly urban areas with tenants have been set up, the CRDRC, within the framework of this assistance, will only provide the necessary protection of the equipment saved. So that, whether they are owners or tenants, there is no conflict with the land for reconstruction and/or questioning the ownership of the destroyed house, for which tenants and owners wanted to be assisted in the same way. Recommended assistance will be provided via tarpaulins and unconditional cash. In general, an important awareness will be made with ongoing communication with the communities on the modalities of assistance.

Current National Society Actions

<p>Assessment</p>	<p>In the 16 affected communes, about 450 volunteers from the communal committees of the Kinshasa branch RC were mobilized for assessments and to provide relief and assistance to the victims. 3 days of rapid assessments with the support of the provincial authorities in collaboration with other operators operating in the city of Kinshasa.</p>
<p>Coordination</p>	<p>The DRC Red Cross participated in a meeting on this flood at the Ministry of Humanitarian Actions.</p> <p>The CRRDC is a member of the coordination system set up by the Ministry of Humanitarian Action and actively contributes to the provision of information to local authorities for sharing with the actors involved and to avoid possible duplication in the assistance offered.</p> <p>As this response is focused on Kinshasa, there is no duplication with the Pilot Programmatic Partnership Programme (PPP), which is focused on South Kivu, one of the most vulnerable provinces in DRC.</p> <p>While there is support in DRC from the ongoing CP3 program there will be no duplication of activities.</p>
<p>Health</p>	<p>The national headquarters of the CRRDC mobilized four ambulances for immediate emergency assistance on the morning of December 13. The Directorate of Operations coordinated with the provincial committee of the RC / Kinshasa for the regular transmission of field information to the national headquarters.</p> <p>Volunteers from the communal committees affected by the disaster conducted rapid assessments provided first aid and evacuated survivors to the nearest health centers; finally, another group began to raise awareness of hygiene regulations in neighboring communes in Kinshasa. The following actions were also carried out:</p> <ul style="list-style-type: none"> • Rescuing the wounded. 87 wounded were rescued by the CRRDC. • Evacuation of the wounded to health centers • Evacuation of people from flooded areas to secure areas • Management of mortal remains (Evacuation of bodies to the city's various morgues) • Conduct community-based surveillance for the prevention of epidemics/diseases resulting from current conditions. The CRRDC as a whole of the country

has experience in CBS and this DREF can take advantage of the system and capacity set with the CP3 project implemented in some zone in Kinshasa.

- The CRRDC can also count on the experience in cholera response, gained with the UNICEF-funded response in DRC. Teams will be trained/retrained for health prevention activities.

Movement Partners Actions Related To The Current Event

IFRC	The DRC Red Cross is assisted by the presence of the Kinshasa-based Cluster Representative Office for the planning and implementation of this operation.
ICRC	DRCRC keeps constant coordination with ICRC in-country.
Participating National Societies	DRCRC keeps constant coordination with all partners in-country.

Other Actors Actions Related To The Current Event

Government has requested international assistance	Yes
National authorities	<p>In view of the seriousness of the damage, the Prime Minister of the DRC convened a crisis meeting on the afternoon of the same day in which the following decisions were reportedly taken:</p> <ul style="list-style-type: none"> • Instructions to the services concerned to make every effort to find the missing persons • Taking charge of the care of the wounded • And ensure a dignified funeral for the dead • A team of experts from the Roads Office was dispatched to assess the situation and "find a rapid solution to the situation".
UN or other actors	<ul style="list-style-type: none"> • OCHA has provided expertise to the ministry through the United Nations Disaster Assessment and Coordination Organization (UNDAC) which has the capacity to assess an emergency team to help assess needs and develop a response plan. • OCHA, UNICEF, ACTION MAP are included in an ongoing evaluation • The Belgian Embassy had promised to contribute with the individual hygiene kit. • The organization of Chinese-owned companies in the DRC through the Chinese Ambassador in the DRC have made a promise of support to live. <p>For the moment, the majority of support has not yet been achieved and the actors are at the evaluation stage. However, not all the interventions programmed so far are duplicated with the assistance provided by the CRRDC, which will continue to monitor and share information with the various stakeholders.</p>

Are there major coordination mechanisms in place?

A coordination for the response to the floods that occurred on the 13th was set up by the Government of the DRC under the leadership of the Minister of Humanitarian Action with the support of the UNDAC team (UN

Disaster Assessment and Coordination) to improve the coordination of the response for more efficiency and effectiveness.

All ministries involved in the response and all humanitarian organizations conducted joint assessments. The following organizations are involved in the coordination system set up by the Government: OCHA, UNICEF, ACTION MAP, clusters protection, education, shelter, nutrition, and health.

The DRC Red Cross, with the support of the IFRC, participates in the various coordination meetings organized by the Ministry of Humanitarian Actions with other humanitarian partners.

Needs (Gaps) Identified



Health

For the populations affected, the experience of these floods and the sudden damage to their homes, well with the ensuing expenditures, has obviously created vulnerabilities and an impact at the psychosocial level. Psychosocial needs are compounded by all the protection problems they generate. In the rapid assessment, it was estimated that 15% of the displaced population has specific needs, including exposure to trauma, chronic patients, people with disabilities, the elderly, female-headed households, child-headed households, pregnant women and nursing mothers, etc.

In addition, insalubrity, deteriorating hygienic conditions, difficulties linked to access to water, and overcrowding of host families create an environment conducive to the development of water-related, diarrheal, and especially vector-borne diseases.

The injured people needed relief and evacuation to which the CRRDC contributed. The wounded have been evacuated to the local health facilities themselves; the coverage of medical costs related to the treatment of the persons affected is very high.

Faced with this disaster, the action of the Red Cross of the DRC is still limited for lack of means, nevertheless, the first aid volunteers have already rescued 87 injured following the floods, directs and evacuates the elderly in the flooded areas in the secure places and injured to the health centers, evacuate mortal remains to morgues in the city of Kinshasa.

In addition, the distribution of mosquito nets to households is necessary to contribute to malaria prevention.

Strengthening household essentials to reduce their exposure to bad weather and disease, as well as access to care for cases of illness, is crucial to mitigate the risk of expansion in the event of an epidemic or disease. Access to care is dependent on the already precarious income following these floods and under pressure with the damage to housing and equipment.

From the perspective of NS capacity, an expansion of epidemiological and disease surveillance at the community level is essential. Passive surveillance within the communities to cover the areas covered is necessary for this intervention. DRCRC will benefit from the CP3 project system and experience already in place in some health zone of Kinshasa.



Water, Sanitation And Hygiene

Water points and latrines have been damaged in flooded areas and remain inadequate in host areas; as a result, access to drinking water, hygiene and sanitation is not only limited, but even low. The risks of waterborne and vector-borne diseases have been increased due to overflowing latrines and poor hygienic conditions.

Precise figures on the number of latrines and water points are not yet available from the rapid assessment but will be collected from the detailed assessment planned by the National Society. But on the National Society made an estimate on the basis of the plots identified. Knowing that there are 5585 flooded houses and that in Kinshasa, on average, it is 5 houses for 1 latrine, this is a significant number of latrines that are currently unusable because of the stagnation and flooding of water and waste resulting from the rains. But the exact condition, precise damage, and number will require detailed assessments.

Three communes Mont Ngafula, Galiema, Kinsenso, and Messina are rural communes operating with wells that have been built and would require support for access to drinking water, according to the results of the detailed

assessment. On the other hand, the other municipalities are in urban areas and use running water, the circuits of which were initially disrupted by the floods which affected the pipes and water treatment areas. The circuit is gradually being restored but remains extremely difficult for the communities.



Shelter Housing And Settlements

The affected population was forced to leave their homes and found refuge with host families for both to erect makeshift shelters that remain vulnerable to bad weather especially during this rainy weather.

519 houses were destroyed in the 16 communes. Most of these houses are rental houses whose households are tenants who have been able to save their property and materials for the most part. These households, therefore, need financial support to access housing or to make up for essential goods lost in floods or the collapse of their homes. Lessons learned from the 2019 flood response will be taken into account as outlined in the operational learning section above in order to anticipate the risk of community friction while providing tailored assistance for the physical and material protection of homeless households.

Operational Strategy

Overall objective of the operation

The objective of this DREF operation is to provide life-saving assistance to 1500 households affected by flooding in Kinshasa through the provision of emergency assistance through multi-use cash support and support for the protection and improvement of water and hygiene conditions for the most vulnerable households. The intervention is planned for 5 months.

Operation strategy rationale

To enable an effective intervention, the CRRDC is launching a DREF to assist 1500 affected households in the 16 municipalities affected by these floods with the technical support of the IFRC and its partners. Needs analysis, selection of beneficiaries, scenario planning and risk assessment will be continuously updated according to the new operational parameters and the CRRDC will adjust the implementation accordingly.

The CRRDC's intervention will focus on the following areas:

1. Livelihoods and support for basic needs: Through multi-purpose cash assistance to cover the most urgent needs of 1500 households. This will cover their needs for basic necessities (sanitary needs and replenishment of household items according to household needs) through versatile cash transfers via Mobile Money using the orange Money service contracted by the CRRDC.
2. Health: Psychosocial support, first aid
3. WASH: Hygiene Promotion and Community Engagement
4. Shelter: Distribution of tarpaulins to households who have lost their homes

The unconditional cash support will be used by households who have also lost their water storage equipment and other essential hygiene equipment and basic necessities according to their needs and urgency to cover immediately in kind or access to housing, health etc. services.

As part of its strategy, the CRRDC will conduct a thorough needs assessment early in implementation. In fact, the first rapid field assessment provided information on which this EPoA is based. This detailed needs and gap assessment, conducted in consultation with partners and targeted communities, will focus on all municipalities using tools such as ODK. The results of the evaluation will make it possible to identify the targeted communities/individuals

on the basis of the criteria defined in the above targeting. This assessment will also serve as a basis for any revision of this emergency action plan.

Targeting Strategy

Who will be targeted through this operation?

The DRC Red Cross will assist the affected populations of 16 communes of the city: Mount Ngafula, Ngaliema, Ngaba, Selembao, Kitambo, Bandalungwa, Bumbu, Kisenso, Ngiri-Ngiri, Barumbu, Matete, Limete, Masina, Makala, Gombe and Kalamu.

Considering the extent and importance of the damage recorded, the DREF operation will target 1500 households or 9000 of the most vulnerable people. One size 6 people per household. Assistance will be provided according to the number of households in place and the types of specific needs.

Explain the selection criteria for the targeted population

The targeted people will be identified and selected according to their level of vulnerability based on the following criteria identified during the rapid assessment and validated with the communities during the detailed assessment. The criteria for selecting beneficiary households are as follows:

- Households whose homes have been destroyed will be prioritized for their high level of exposure
- The following vulnerability criteria will then be cross-referenced for the selection of other households:
- People particularly vulnerable to the risks of waterborne and vector-borne diseases: households with elderly people, female-headed households, households with pregnant and lactating women with children under 5 years of age, people living with disabilities, and households that have lost all household assets. People who have not received any assistance from other partners

The CRRD will ensure that Operation DREF is in line with the CR movement's commitment to respect gender equality and diversity. The CRRDC will ensure that the criteria for selecting beneficiaries are adapted to the basis of vulnerability and take into account the other cultural aspects that will be examined as well as the prevention of sexual exploitation and abuse.

Total Targeted Population

Women:	2,754	Rural %	Urban %
Girls (under 18):	1,836	60.00 %	40.00 %
Men:	2,646	People with disabilities (estimated %)	
Boys (under 18):	1,764	1.00 %	
Total targeted population:	9,000		

Risk and security considerations

Please indicate about potential operational risk for this operations and mitigation actions

Risk	Mitigation action
Risk of worsening of inflation conditions and access to goods and food during the period of strong marketing due to annual celebrations.	The CRRDC will monitor the situation and gather essential information for the ongoing food security project. In addition, the planned assistance will take account of

the limits of access to basic necessities due to flooding and market monitoring will be carried out.

Very heavy rains are falling throughout the country and flooding is affecting all provinces in the Congo basin.

The CRRDC will continue its response as outlined in its action plan; it will continue to monitor the humanitarian situation and will consider expanding its activities through an emergency appeal to address the deteriorating situation as foreseen by the CRRDC multi-sectoral and national action plan.

The affected areas are impacted by epidemics (cholera and other waterborne diseases).


The CRRDC will continue its response by revising the operational action plan with the involvement of the health directorate.

Please indicate any security and safety concerns for this operation

The areas affected by this action plan do not represent particular risks, the Red Cross is present in all 26 communes of the city of Kinshasa with a network of volunteers from the community and it is accepted in all areas of intervention.


However, as part of this intervention, the CRRDC will ensure personal security for all stakeholders; the project manager will be in charge of monitoring the health and security context that may have affected the staffs and volunteers mobilized. Appropriate personal protection will be given to each volunteer and supervisors as well as visibility equipment. Visibility will also be set up with SN logos at distribution locations.

Planned Intervention

	Health	Budget	CHF 41,914
		Targeted Persons	9000
Indicators		Target	
Number of households benefiting from health activities		1500	
Number of volunteers trained PSS		176	
Number of volunteers trained in health care		176	
Number of people reached by hygiene activities and community engagement		9000	
Number of households visited		1500	
% of community members who agree that they have adequate information about the disease/epidemic and means of protection		70	
Priority Actions:		<ul style="list-style-type: none"> • Training of first-aid volunteers in PSS and CEA for 2 days • Replenishment of first aid kits. • EPIC / BTIT training 2 days minimum with focus on waterborne and vector-borne diseases. • Health promotion by volunteers will focus on the prevention of cholera, waterborne and vector-borne diseases, as well as acute respiratory infections and pneumonia due to the destruction of shelters. • Passive surveillance of cases of diarrhea and diseases within communities during volunteer raids 3 times a week during the 3 months of activities. • Distribution of mosquito nets to 2 households per household to 1500 households • Home visit over 3 months for the dissemination of awareness-raising messages • Psychosocial support to communities as needed and to volunteers 	


	Shelter Housing And Settlements	Budget	CHF 64,472
		Targeted Persons	3000
Indicators		Target	

Number of volunteers trained	160
Number of people who received the tarpaulins	3000
Priority Actions:	<ul style="list-style-type: none"> • Purchase of tarpaulins • Training volunteer for distribution and shelter support • Distribution of tarpaulins to beneficiaries – 2 per hhs • Post-distribution follow-up

	Multi-purpose Cash	Budget	CHF 183,361
		Targeted Persons	9000
Indicators		Target	
Number of evaluations completed		1	
Number of PDMs completed		2	
Percentage of households assisted where basic needs are reached at 80%		90	
Number of households benefiting from cash transfers		1500	
Priority Actions:		<ul style="list-style-type: none"> • Multi-sector detailed assessment and market assessment • Identification of cash transfer beneficiaries • Training of volunteers on cash transfer (data collection) • Cash distribution to 1500 households for a single unconditional distribution of 100 USD – this value will be reviewed based on detailed and market assessment and in consideration with other cash interventions with regards national and regional MEB (minimum expenditure baskets) • Post-distribution follow-up • The CRRDC has a contract with a financial service provider for mobile telephony which will be used for mobile transfer with distribution of chips to the heads of beneficiary households. 	

	Secretariat Services	Budget	CHF 21,825
		Targeted Persons	1
Indicators		Target	
Name of surge deployed		1	

Priority Actions:	<ul style="list-style-type: none"> • The IFRC has a project manager based in Kinshasa who will also support the coordination and mobilization of the response and will undertake regular monitoring visits. • Ensure that volunteers are adequately insured. • The necessary technical support will also be provided for CASH via a surge deployment, and other sectors as needed.
--------------------------	---

	National Society Strengthening	Budget	CHF 32,007
		Targeted Persons	352
Indicators		Target	
Number of volunteers mobilized and supported		352	
Priority Actions:		<ul style="list-style-type: none"> • For the planned actions, the National Society will mobilize 6 staff and 320 volunteers and in the affected areas, as well as a DM officer at central level. The field teams will consist of 1 supervisor per group of 10 volunteers. They will be trained in the various sectors and will work under the coordination of the DM manager. All costs related to their participation in implementation have been budgeted. • To support volunteers in their mission as well as the visibility of Red Cross actions on the ground, RC DRC through this operation DREF, will purchase protection and visibility items for volunteers. 	


	Community Engagement And Accountability	Budget	CHF 13,955
		Targeted Persons	9000
Indicators		Target	
Number of volunteers mobilized for community engagement activities		160	
Number of volunteers trained at the CEA		160	
Number of local leaders committed to community outreach		160	
Number of feedback collected		500	
% of collected feedback that has been processed		100	
		<p>Both the Community and the ERP will be integrated into the sectors of intervention throughout the operation through the approach that will be adopted. This will mainly involve:</p> <ul style="list-style-type: none"> • Ensure that communities receive continuous information on 	

Priority Actions:

assistance, criteria for selecting and identifying beneficiaries and distribution parameters.

- In view of the difficulties already encountered in the past on the assistance provided, the specific groups forming part of the communities will be engaged individually to gather their views and promote the approach of the National Society. It will also be necessary to maintain a dynamic two-way feedback system through discussions with representative panels of communities and local leaders. But also, through the feedback collected by volunteers during awareness visits.
- Volunteers will be engaged in sensitizing the community on the process of raising awareness about safe shelters, distribution of IEC materials on disease prevention, environmental hygiene and the correct use of mosquito nets.
- Volunteers will be trained and mobilized to cover these activities. They will be the same ones engaged in health and hygiene activities in order to integrate promotion with community engagement.

	Water, Sanitation And Hygiene	Budget	CHF 41,211
		Targeted Persons	9000
Indicators		Target	
Number of households sensitized through door-to-door		1500	
Percentage of households sensitized that have integrated prevention and protection messages		80	
Number of households benefiting from aqua tabs		1500	
Number of households receiving sanitation		1500	
Priority Actions:		<ul style="list-style-type: none"> • Purchase and positioning of sanitizing equipment for use by volunteers • Identification of damaged latrines and water points • Sanitation of the environment by volunteers over a minimum of 4 weeks 160 volunteers will be engaged • Purchase and distribution of aqua tabs to 1500 households. • Hygiene promotion and awareness-raising. Main themes including environmental and personal hygiene, the use of local products for sanitation 	

		Budget	CHF 0
			9000

	Protection, Gender And Inclusion	Targeted Persons	
Indicators		Target	
Number of volunteers trained		160	
Number of prevention sessions		16	
	Priority Actions:	<ul style="list-style-type: none"> • Organized introductory sessions on Protection, Gender and Inclusion PGI, • Sessions on prevention and protection against sexual exploitation and abuse for volunteers carried out at the operation. • With the CEA team, set up or monitor the feedback mechanism to ensure that the community participates in all stages of this response, and benefit from a response that corresponds to the particular situation of the Kinshasa case. • These actions will be coupled with community engagement and health/WASH awareness activities. 	

About Support Services

How many staff and volunteers will be involved in this operation. Briefly describe their role.

For this operation the Red Cross of the DRC will mobilize:

- 1 National Coordinator
- 1 PMER
- 1 Communication
- 1 Provincial coordinator
- 2 Drivers
- 320 First Aid Volunteers, including 160 per pillar of intervention. The CRRDC divides this intervention into 2 main pillars requiring dedicated volunteers for each water for more efficacy: health, PSS, ECA for the first pillar + WASH, sanitation and Distribution over 6 days only (3 days cash and 3 days for equipment) for the second.
- 64 Supervisors including local training facilitators. They will be mobilized and deployed during the 3 months of activities and will ensure an efficient rest.

Will surge personnel be deployed? Please provide the role profile needed.

A Surge with profile Cash for one month. to cover the distribution. Remote technical support will also be provided by IFRC as required.

If there is procurement, will it be done by National Society or IFRC?

The DRC Red Cross has two warehouses in the city of Kinshasa and two logisticians. All purchases of this operation will be carried out by the DRC Red Cross.

How will this operation be monitored?

The DRC Red Cross has a pool of PMECs, one of which will be seconded to support this operation in the implementation. Joint follow-up missions will be organized between the IFRC and the DRC Red Cross.

Please briefly explain the National Societies communication strategy for this operation.

To support volunteers in their mission as well as the visibility of Red Cross actions in the field, the CRRDC through this DREF operation will procure protection and visibility items for volunteers. In addition, megaphones and IEC materials will be produced to promote hygiene awareness and measures to protect households from communicable diseases, including covid-19.

Budget Overview



DREF OPERATION

MDRCD039 - DRC RED CROSS FLOODS IN KINSHASA

Operating Budget

Planned Operations	344,913
Shelter and Basic Household Items	64,472
Livelihoods	0
Multi-purpose Cash	183,361
Health	41,914
Water, Sanitation & Hygiene	41,211
Protection, Gender and Inclusion	0
Education	0
Migration	0
Risk Reduction, Climate Adaptation and Recovery	0
Community Engagement and Accountability	13,955
Environmental Sustainability	0
Enabling Approaches	53,832
Coordination and Partnerships	0
Secretariat Services	21,825
National Society Strengthening	32,007
TOTAL BUDGET	398,745

all amounts in Swiss Francs (CHF)

Contact Information

For further information, specifically related to this operation please contact:

- **National Society contact:**

Grégoire MATEO, Président de la Croix-Rouge de la RDC, presidentnational@croixrouge-rdc.org, +243822388209

- **IFRC Appeal Manager:** Mercy LAKER, Head of Delegation, mercy.laker@ifrc.org

- **IFRC Project Manager:** Dr Zeade Leonard NIOULE, Program coordinator, Leonard.NIOULE@ifrc.org

- **IFRC focal point for the emergency:** MERCY LAKER, Chef de délégation, mercy.laker@ifrc.org, +243853449555

- **Media Contact:** Christian shadrack wamungu, I M officer, wamungu.christian@ifrc.org, +243847015894

[Click here for the reference](#)