

www.ifrc.org
Saving lives,
changing minds.

Emergency Plan of Action (EPoA)

Nepal: Floods and Landslides



DREF operation MDRNP007	Glide n° FL-2014-000112-NPL
Date of issue: 21 August 2014	Expected timeframe: 6 months
DREF budget: CHF 249,709	Expected end date: February 2015
Operation manager (responsible for this EPoA): Ritva Lahti, Country Representative IFRC Nepal Country Office phone: +977 980 1142 422 email: ritva.lahti@ifrc.org	Point of contact: Dev Ratna Dhakhwa, Secretary General Nepal Red Cross Society phone: +977 427 0650; fax: +977 427 1915 email: dev@nrsc.org
Total number of people affected: 216,770	Number of people to be assisted with this DREF: 4,000 families (20,000 people)
Host National Society presence (n° of volunteers, staff, branches): 230 volunteers, 43 staff and 19 district chapters	
Red Cross Red Crescent Movement partners actively involved in the operation: NRCS and IFRC	
Other partner organizations actively involved in the operation: Nepal Government Ministry of Home Affairs, District Disaster Response Committee, Security Forces (Nepal Army, Nepal Police, Armed Police Force) and UN agencies.	

A. Situation analysis

Description of the disaster

The torrential rain has been affecting Nepal since 14 August 2014 causing massive floods and several landslides in 19 districts throughout the country. [The Department of Hydrology and Meteorology record](#) shows water level in Koshi, Narayani, Karnali and west Rapti rivers increased above warning level during 14-16 August. In Babai River in Bardiya, where the early warning system (EWS) was built on the existing gauge station, the station has been washed away by flood and no EWS worked which resulted in human deaths in addition to huge property loss.

The water overflowing the banks of these rivers caused inundation in most of village development committees (VDCs) of Siraha, Dang, Surkhet, Banke, Bardiya and Kailali districts. Of the 19 districts affected by the floods, five districts (Jajarkot, Salyan, Rukum, Rolpa and Lalitpur) have also experienced landslides.

According to the Initial Rapid Assessment (IRA) reports received from the affected districts on 20 August 2014, a total of 43,354 families (216, 770 people) have been affected, of which 13,486 families (67,430 people) are displaced. The report indicates that 105 people are confirmed dead; 153 people are still missing; and 53 people have been injured. The numbers have been increasing day by day, and are likely to continue as some of the affected areas are challenging to access.

The floods and landslides have damaged infrastructure such as: roads connecting district headquarters to the affected VDCs; bridges; culverts; local markets; transport vehicles as well as livestock; crops and daily consumables. Highways, linking Banke to Bardiya, Nepalgunj to Surkhet and Surkhet to neighboring districts, have been blocked due to landslides and floods. Furthermore, floods have swept away five suspension bridges in Surkhet which is causing daily movement for those affected even more challenging. First responders of the government and NRCS in five VDC's in turn face challenges in gaining access to these areas.

Disaster situation	
No. of affected districts	19
No. of dead people	105
No. of missing people	153
No. of injured people	53
No. of affected families	43,354
No. of displaced families	13,486
No. of house destroyed completely	11,044
No. of houses damaged partially	11,037
Affected districts: Surkhet, Bardiya, Banke, Dang, Kailali, Jajarkot, Salyan, Rukum, Rolpa, Achham, Gorkha, Rautahat, Siraha, Khotang, Lalitpur, Chitwan, Udayapur, Dhanushan and Mahottari	

A total of 11,044 houses have been fully destroyed and 11,037 houses partially damaged in the affected districts. The communication network and electricity supply are greatly restricted due to fallen electrical and telecommunication poles. Drinking water supply systems have been disrupted in Surkhet valley while hand pumps have been contaminated in the southern plain area due to water inundation.

Following the disaster, the Nepal Red Cross Society (NRCS) district chapters immediately deployed their trained volunteers to conduct rapid assessments and provide relief services to the affected people. However, their access to the affected areas has been restricted due to the inundation of entire villages and blocked roads. Also, volunteers have been facing problems in identifying and managing the temporary evacuation centers due to low availability of public places and safe places in comparison to the large number of displaced people. Government security personnel (Nepal army, armed police force and Nepal police) and NRCS volunteers have evacuated affected families from high-risk areas to shelters in the schools and public places. Some families are still living in open places.

The rain has gradually decreased from the evening of 16 August in most areas although flood waters may take some days to recede from those VDCs that have been inundated.

This is the second major disaster related to the ongoing monsoon season. In early August, massive landslides from the hillside in Jure, Mankhaa VDC of Sindhupalchowk district in Nepal killed 33 people with 123 people missing and declared dead by the government of Nepal. The landslide created a 2.5 Km. long artificial lake that posed a severe risk for flash floods for a number of days until the water slowly receded. An [Information bulletin](#) was issued on 3 August reporting on the situation and humanitarian actions for both Nepal and India. A subsequent [Information bulletin](#) was issued on 17 August reporting on additional floods and landslides in Nepal.



Magnitude of destruction of landslide in Jure, Sindhupalchowk.

Summary of the current response

Overview of Host National Society

The floods and landslides during the monsoon season that started in June have so far resulted in 256 deaths and 185 people missing throughout the country. The monsoon season is expected to last until September before moving into dryer weather by October. Floods and landslides hit several districts of Nepal every year; however the impact is severe this year in comparison to the last few years and significant flooding has occurred in a very high number of districts at the same time.

Nepal Red Cross Society has been coordinating all relief efforts from its' EOC at National Headquarters. NRCS has regularly been taking part in the emergency meetings of Central Natural Disaster Relief Committee (CNDRC). The National Emergency Operation Centre (NEOC) and Local Emergency Disaster Management Authority (LEMA) have been activated and NRCS has also been represented at both levels. NRCS headquarters participated in the NEOC on 16 August 2014. In the meetings, the government requested all humanitarian actors to provide immediate ready to eat food, water, sanitation and hygiene (WASH) services and emergency shelter to the affected people.

NRCS district chapters deployed response teams immediately on 14 August when the flooding started to carry out assessment, assist in evacuations, undertake relief management and provide first aid services in all affected areas. District Disaster Response Team (DDRT), Community Action for Disaster Response in Emergency (CADRE) and first aid teams have been deployed and so far more than 172 volunteers and more than 43 staff have been mobilized to help with evacuations, rapid assessments, relief distributions and logistics management in the affected districts.

Likewise, the NRCS district chapters and volunteers are providing support to security forces in search and rescue and evacuating them to safe areas in some of the worst affected districts, including Surkhet, Kailali, Banke, Dang, Siraha, Bardiya and Mohattari. NRCS Kailali district chapter is managing the distribution of ready-to-eat food (biscuits, beaten rice, instant noodles) in coordination with local organizations. NRCS has so far distributed non-food relief items (NFRI) for around 422 families with the distribution ongoing in all affected districts.

NRCS regional warehouses in Birgung and Nepalgunj have already dispatched 300 full sets of non-food relief items (NFRI) – click [here](#) to view the content in each NFRI set) as well as 700 tarpaulins, 800 blankets and 100 buckets to Rautahat, Surkhet, Bardiya and Dang. Additionally, other district chapters have been using their own preparedness stocks such as tarpaulins, blankets, NFRI, kitchen sets, soaps, water purifying agent, oral rehydration solution (ORS) and local resources and donations to assist affected families. Reports are still being received on the amounts distributed. Because of the interruption of road transport services in Surkhet, the NRCS used a government helicopter to transport NFRI during the initial days.



Red Cross volunteers conducting needs assessments in the landslide area in Jure, Sindhupalchok

NRCS headquarters also dispatched 200 bottles of chlorine solution (each bottle contains 240 ml enough for purifying 1,200 litre of water) from its central warehouse to the mid-western regional warehouse in Nepalgunj. The chlorine solution bottles will further be dispatched in the disaster affected districts and finally trained volunteers will distribute them in the affected communities for household water treatment purposes.

NRCS headquarters is keeping additional National Disaster Response Team (NDRT), CADRE, DDRT, and first aid volunteers on stand-by for deployment as needed. NRCS district chapters have been represented in the District Disaster Relief Committee (DDRC) meeting in concerned districts. Upon request from Bardiya and Surkhet district chapters, the NRCS headquarters deployed three NDRT trained staff for coordination, assessment and relief distribution.

This DREF is launched to ensure the response to immediate humanitarian needs. NRCS keeps monitoring the situation closely and all concerns chapters are feeding updated data to the Emergency Operations Center (EOC) at National Headquarters. Further action might well be required and NRCS is considering options to access additional resources to meet the needs, including the option of an Emergency Appeal or DREF extension.

Overview of Red Cross Red Crescent Movement in country

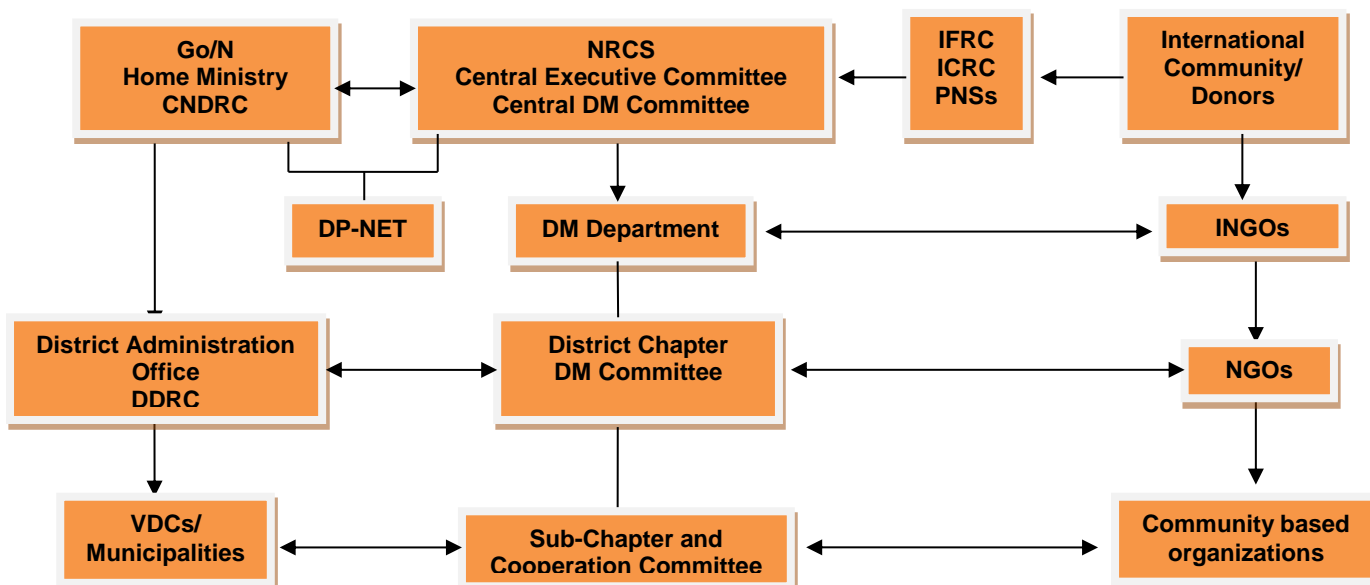
The International Federation of Red Cross and Red Crescent Societies (IFRC) has been supporting NRCS for preparing situation reports and providing inputs to coordinate the relief operation to ensure fulfillment of immediate humanitarian needs on the ground. Likewise, the IFRC is participating in different meetings, including NEOC and Humanitarian Country Team. IFRC has also been coordinating with shelter cluster members. The IFRC team in the country is closely monitoring the situation together with the NRCS and coordinating with all in-country Partner National Societies (PNS).

Movement Coordination

The IFRC has been informing all concerned PNSs about the daily situation and current needs to be fulfilled. Belgian Red Cross has provided water purification liquid (200 bottles of Chlorine solution, each bottle contains 240 ml enough for purifying 1,200 liter of water) to NRCS. The water purification liquid will be distributed in the mid- western districts through the regional warehouse at Nepalgunj, Banke. The Belgian Red Cross has also provided 20 volunteer hygiene promotion kits (one kit for each volunteer), and 100 bottles of Chlorine solution (Puyush) with 250ml for the people affected by the Sindhupalchowk landslides.

NRCS Coordination Mechanism

NRCS is using its well-established coordination mechanism working around the Central Executive Committee and the DM Department. The coordination mechanism is outlined in the graphic below.



Overview of non-RCRC actors in country

The Government of Nepal has been organizing regular emergency meetings of Central Natural Disaster Relief Committee. The NEOC and Local Emergency Disaster Management Authority have been activated. All three security forces (Nepalese Army, Armed Police Force and Nepal Police) have been deployed for immediate search and rescue.

The security forces located at district level were mobilized, alerting people to be evacuated and assisting them to move to safer locations as the flooding started. The government has also mobilized private and government owned helicopters to transport people at risk to safer places, injured people to hospitals and relief materials to the operations site. The two helicopters which were used for two days by the Government have now been stood down.

A meeting was called by the NEOC on 16 August and chaired by the joint secretary of Ministry of Home Affair and participants included NRCS, UN agencies and other humanitarian organizations. In the meeting, the joint secretary emphasized on the immediate needs of affected people and requested all the humanitarian actors to provide ready to eat food, staple food and transitional shelter along with NFRI materials.

Nepal Government has announced to suspend parliament activities for seven days for all parliamentarians to go and visit relevant and affected constituents. A disaster rescue control room has been set up and activated under the Prime Minister's Secretariat to bring about coordination at the central level in carrying out all the works. Government of Nepal has started providing compensation of NPR 40,000 (approx. CHF 375) to each of the dead person's family or relatives in the disaster affected districts.

UNICEF is working on WASH interventions in several districts and WFP is planning to distribute staple food in Bankey, Bardiya, Surkhet, Dang and Kailali districts. Other actors involved in some districts include Save the Children, Care and Plan.

Needs analysis, beneficiary selection, risk assessment and scenario planning

Joint rapid assessment is being conducted in coordination with the District Disaster Response Committee (DDRC) in the affected districts. The NRCS NHQs is receiving assessments reports from all affected districts on a daily basis. The preliminary analysis done at district and NHQs level indicates the following priority needs of the affected population:

- Emergency shelter and support for re-building/repairing damaged houses
- Non-food relief items
- Psychosocial support
- Drinking water, sanitation and hygiene promotion
- Basic health services (first aid, health is emergency services)
- Tracing/restoring family links services

According to Initial Rapid Assessment reports received from district chapters, there is a clear gap for ready to eat food, emergency shelter assistance, NFRI and WASH interventions to meet immediate humanitarian needs of more than 7,000 families (35,000 people) in the affected districts. However, the number of reported people affected by the disasters is still increasing as some of the affected areas are only now being accessed. Hence, relief services will be needed for additional people. The affected and displaced population is struggling to manage daily food, shelter and water required to sustain their lives. Sources of drinking water have been contaminated due to inundation from flood water resulting in limited availability.

NRCS warehouses have been dispatching relief materials regularly to the affected districts, which is depleting the stock of relief items. At the moment, NRCS has a stock of around 5,000 NFRI sets throughout the country from which relief is dispatched to branches. The NRCS headquarters has continuously been getting requests from affected districts to send additional NFRI sets to meet the need of displaced and affected population.

Assessments are still being carried out in all affected areas in the 19 districts and further information will be obtained in the coming days.

Since NRCS has limited human resources in psychosocial support, this activity will need to be addressed by other actors.

Risk Assessment

As the affected areas are scattered and located in remote areas, logistical arrangements remain a key challenge and risk. Assessment teams and responders are reporting several challenges to gain access in the areas affected due to roads being blocked and continuous rain.

The number of displaced families has already exceeded 11,000 and if the numbers keep on rising, available resources will not be enough which will pose a challenge in meeting the humanitarian needs.

B. Operational strategy and plan

Overall objective

The overall objective of the operation is that immediate humanitarian needs of 4,000 families (20,000 people) displaced by floods and landslides in 19 districts of Nepal are met through the provision of emergency shelter assistance, WASH and NFRI. The targeted population is primarily those displaced by, and secondarily those affected by, floods and landslides according to beneficiary selection criteria outlined below.

Proposed strategy

The NRCS, utilising its staff and volunteers across the affected areas, has been actively engaged in response immediately after onset of disaster and they are in the affected areas rendering relief services. The current operation is mainly focused on assessment and relief materials distribution for affected population, especially the displaced population.

Overall NRCS operation: In its operation, based on the current situation, NRCS plans to distribute a total of 4,000 NFRI sets, 750 shelter kits (standard IFRC kits with tarpaulins, rope, nails and tools) as well as water purification liquid, soap and oral rehydration salts packets from its' existing preparedness stocks and through quick procurement. The distribution of water, sanitation and hygiene related items will be coupled with hygiene promotion.

Each NFRI set includes the following materials	
Item and unit	Amount
Tarpaulin (piece)	1
Nylon Rope (meters)	10
Blanket (piece)	2
Female Sari (piece)	1
Male Dhoti (piece)	1
Suiting Cloth (meters)	3.5
Print Cloth (meters)	7
Plain Cloth (meters)	2
Tericotton Cloth (meters)	4
Water Bucket with lid (piece)	1
Kitchen Utensils (set)	1

DREF support: The support requested from the DREF will be utilized for operational and logistical costs, replenishment of 2,500 NFRI sets and the procurement of 17,000 bottles of water purifiers (chlorine solution), 12,000 bars of soaps and 12,000 packets of rehydration solution. The intervention will be guided by Sphere standards.

So far, a total of 172 volunteers and 43 staff have been deployed for evacuation, assessment and relief distribution. Mobilization for assessments is covered from the DREF and up to a total of 230 volunteers are estimated to be needed based on the current situation. Restoring family link (RFL) service will be provided in Surkhet, Bardiya and Dang. A total of 12 trained volunteers will be mobilized for RFL need assessment, tracing and well informed about the situation of missing people.

Selection of beneficiaries

The prioritized beneficiaries include the elderly, women and children as the most vulnerable categories during disasters. Further assessments will identify others who are vulnerable in this particular context, especially when taking coping mechanisms and socio-economic status into account resulting in targeting of

- families most affected by the floods and landslides and displaced from their homes; and
- affected families headed by women (widows), elderly couples, young couples with small children.

Operational support services

Human resources

The operation is expected to involve at least 230 volunteers and 43 staff for a number of weeks, and some staff and volunteers will continue to work until the end of the operation. In total, NRCS has already assigned 172 volunteers and 43 staff for assessments in the different affected areas, including providing staff to join Government led assessments together with the DDRRC.

This DREF covers travel, accommodation and per-diem costs related to the staff and volunteers. Pending finalisation of broader insurance schemes, the DREF covers insurance for the volunteers used in the operation through the IFRC global volunteer accident insurance scheme. The EOC's on both district and National Headquarters level are being strengthened for the management and coordination of the operations and related costs are also included in this DREF.

Logistics and supply chain

A total of 4,000 NRFI sets (*DREF: 2,500*), 750 shelter kits, 17,000 bottles of water purifying solution, 12,000 bars of soaps (*DREF*) and 12,000 packets of rehydration solution (*DREF*) will be procured locally for distribution or as replenishment, following IFRC standard procurement procedures to ensure audit trail.

NRCS has a central warehouse in Kathmandu and initially the replenishment will be directed there. Decisions around the logistics and timeframes for replenishing pre-positioned stocks used in the zones and branches will be determined once the procurement part of the DREF has been implemented and delivery times are confirmed. Transport and distribution costs within the country will be covered from this DREF budget.

Communications

NRCS Humanitarian Value and Communication Department is the focal department for communication and media relations. Information of disaster responses are regularly being updated on the NRCS Facebook page and airing through the NRCS radio program. Field visits will be conducted to capture materials for web story and best practices reflecting the actual needs and operation in the field in the coming days. Local media persons will also be mobilised. Local FM radios will be approached in order to broadcast key messages regularly.

Beneficiary communication and close coordination with the affected population will be taken into considering during relief operation and the NRCS will incorporate feedback during the course of the relief operation. Visibility materials like aprons and key message news bulletins will be promoted. Best practices will be captured and all efforts made to record case studies as we go through the project.

Security

Difficult terrain and geographical remoteness, harsh weather conditions and damaged infrastructure (roads and bridges) are current realities in the field in Nepal. Despite having problems in getting access to the affected VDCs due to inundation and absence of transportation services, the NRCS volunteers are utilizing locally available facilities, including boats in some places, to carry out assessment and render relief services in affected areas.

NRCS will make provision of Global Insurance for the volunteers deployed in this operation. NRCS enjoy countrywide visibility and respect in Nepal. It has a wide network of community-based volunteers who are trained in first aid, CADRE, DDRT, NDRT and CBDRR. The emblem is respected throughout the country.

Beyond the Red Cross Red Crescent Movement, regular contacts are maintained with local security networks. IFRC country office participate in monthly Humanitarian Country Team (HCT) meetings, convened by UN OCHA, and other fora in which national security is considered and discussed.

Since the NRCS, has been closely working together with the community and all three security forces in all affected areas, there are many opportunities to ensure security at ground.

Planning, monitoring, evaluation and reporting

NRCS will oversee all operational, implementation, monitoring and evaluation, and reporting (PMER) aspects of the present operation in the flood and landslide affected districts through its country-wide network of branches, volunteers

and staff. The responsibility for day-to-day monitoring of the operation will be with NRCS district chapters supervised closely by national headquarters to ensure appropriate accountability, transparency and financial management of the operation. NRCS PMER unit will be involved in the PMER activities especially planning and reporting of the operation at headquarters.

IFRC, through its country office in Kathmandu, will provide technical support to NRCS. The affected districts will be regularly visited by joint IFRC and NRCS monitoring teams on an as needed basis. This will help identify and, where possible and necessary, resolve any problems. The situation in the field will be reported on through daily EOC reports and monthly progress reports. Reports will provide necessary information in relation to the progress of the operation, any changes in the situation during the reporting period, and any particular problem, constraint or unmet needs.

At the end of the operation and implementation of this DREF, a review will be conducted. This review will be a joint effort of the NRCS, IFRC and in-country partners to ensure that lessons learnt from the preparedness work ahead of the season as well as the response operations are captured and used to further develop NRCS, IFRC and partners' capacities.

A final report on this DREF-supported operation will be made available three months after the end of the operation.

Administration and Finance

The operation will rely on existing financial management and administration systems in NRCS and IFRC. Provisions have been made for communication costs related to the operation as well as financial charges and general expenses (refer to *budget*).

Contact information

For further information specifically related to this operation please contact:

- **Nepal Red Cross Society:**
 - Dev Ratna Dhakhwa, Secretary General; phone: +977 427 0650; fax: +977 427 1915; email: dev@nrcc.org
 - Dharma Raj Pandey, Head of Department, Disaster Management; phone:+977 98511 30168, email: dharma.pandey@nrcc.org
- **IFRC Nepal Delegation:**
 - Ritva Lahti, Country Representative, phone: +977 98510 47071, email:ritva.lahti@ifrc.org
- **IFRC Regional Delegation:**
 - Simon Missiri, Head of Regional Office, phone: +91 11 26154021 to 24; fax: +91 11 26154025; email: simon.missiri@ifrc.org
- **IFRC Asia Pacific Zone Office:**
 - Andreas Weissenberg, Operations Coordinator; office phone: +603 907 5729; email: andreas.weissenberg@ifrc.org.
- **In Geneva:**
 - Christine South, Operations Support; office: +41 22 730 4529; email: christine.south@ifrc.org
- **IFRC AP Zone Logistics Unit (ZLU):**
 - Florent Chane, Zone Logistics Coordinator; mobile: +60 12 298 9752; email : florent.chane@ifrc.org

For Resource Mobilization and Pledges:

- **In Asia Pacific Zone Office:**
 - Emilia Koski, Relationship Manager; mobile:+60 12 230 7548; email: emilia.koski@ifrc.org

For Performance and Accountability (planning, monitoring, evaluation and reporting enquiries):

- **In Asia Pacific Zone Office:**
 - Peter Ophoff, Head of PMER; office: +603 9207 5507; email: peter.ophoff@ifrc.org

How we work

All IFRC assistance seeks to adhere to the **Code of Conduct** for the International Red Cross and Red Crescent Movement and Non-Governmental Organizations (NGOs) in Disaster Relief and the **Humanitarian Charter and Minimum Standards in Humanitarian Response (Sphere)** in delivering assistance to the most vulnerable. The IFRC's vision is to inspire, **encourage, facilitate and promote at all times all forms of humanitarian activities** by National Societies, with a view to **preventing and alleviating human suffering**, and thereby contributing to the maintenance and promotion of human dignity and peace in the world.

The IFRC's work is guided by Strategy 2020 which puts forward three strategic aims:



Save lives,
protect livelihoods,
and strengthen recovery
from disaster and crises.



Enable **healthy**
and **safe** living.



Promote social inclusion
and a culture of
non-violence and **peace**.

DREF OPERATION

21/08/2014

MDRNP007 Nepal Floods and Landslides

Budget Group	DREF Grant Budget CHF
Shelter - Relief	45,262
Clothing & Textiles	82,761
Water, Sanitation & Hygiene	10,541
Ustensils & Tools	23,684
Other Supplies & Services	6,842
Total RELIEF ITEMS, CONSTRUCTION AND SUPPLIES	169,089
Distribution & Monitoring	1,895
Transport & Vehicle Costs	13,052
Total LOGISTICS, TRANSPORT AND STORAGE	14,947
National Society Staff	8,421
Volunteers	8,210
Total PERSONNEL	16,631
Workshops & Training	6,947
Total WORKSHOP & TRAINING	6,947
Travel	7,143
Information & Public Relations	2,158
Office Costs	9,316
Communications	1,210
Other General Expenses	7,028
Total GENERAL EXPENDITURES	26,855
Programme and Supplementary Services Recovery	15,240
Total INDIRECT COSTS	15,240
TOTAL BUDGET	249,709



Nepal: Floods and Landslides

