

www.ifrc.org  
Saving lives,  
changing minds.

## Emergency Plan of Action (EPoA) Nepal: Floods and Landslides

 International Federation  
of Red Cross and Red Crescent Societies

<b>Emergency Appeal ° MDRNP007</b>	<b>Glide n° <a href="#">FL-2014-000112-NPL</a></b>
<b>For Emergency Appeal: 27 August 2014</b>	<b>Expected timeframe: 9 months</b> <b>Expected end date: May 2015</b>
<b>Operation manager (responsible for this EPoA):</b> Ritva Lahti, Country Representative IFRC Nepal Country Office phone: +977 980 1142 422 email: <a href="mailto:ritva.lahti@ifrc.org">ritva.lahti@ifrc.org</a>	<b>Point of contact:</b> Dev Ratna Dhakhwa, Secretary General Nepal Red Cross Society phone: +977 427 0650; fax: +977 427 1915 email: <a href="mailto:dev@nrccs.org">dev@nrccs.org</a>
<b>Appeal budget: CHF 2,463,646 (DREF allocated: CHF 249,709)</b>	
<b>Total number affected: 26,108 families; 130,540 people; as per 26 August</b>	<b>Number of people to be assisted: 50,000 (10,000 families)</b>
<b>Host National Society presence (n° of volunteers, staff, branches):</b> 230 volunteers, 43 staff, national headquarters and 21 district chapters currently involved, 408 volunteers projected to be mobilized in total	
<b>Red Cross Red Crescent Movement partners actively involved in the operation:</b> NRCS and IFRC	
<b>Other partner organizations actively involved in the operation:</b> Nepal Government Ministry of Home Affairs (MOHA), District Disaster Response Committee (DDRC), Security Forces (Nepal Army, Nepal Police, Armed Police Force) and UN agencies, Save the Children, Care and Plan.	

### A. Situation analysis

#### Description of the disaster

The monsoon season of 2014 in Nepal has been severe compared to previous years. The monsoon reached Nepal in June and is forecasted to withdraw by late September or early October. After an initial normal start to the season, with only localized flooding, early August saw massive landslides from the hillside in Jure, Mankhaa village of Sindhupalchok district due to heavy rains. The landslide killed 106 people with 155 people still missing and declared dead by the government of Nepal. An [Information bulletin](#) was issued on 3 August reporting on the situation and humanitarian actions for both Nepal and India. In addition to the normal, ongoing monsoon rains, heavy rains between August 14 and 16 have now caused massive flooding and several landslides in 19 districts throughout the country. Two additional districts have been affected by monsoon rains on 25 August.

Table 1 shows a summary of the effect of the recent flooding, based on Initial Rapid Assessment (IRA) reports received from the affected districts up until the August 25. There are conflicting and at times inconsistent numbers from various sources, but NRCS is very confident in its own data. It is in most cases collated from very detailed information, in some districts already down to the individual name of the persons affected. This has been achieved through the network of volunteers that stretches even into the remote areas of the districts. Around one week into the disaster, the overall number of affected people started to drop, from a peak of 45,000 families to around 26,000 by August 27, as per NRCS chapters' continuous assessments. Through data validation in the last couple of days, a number of houses initially reported destroyed has also been moved to the category of damaged, especially in Bardiya that initially reported very high number of destroyed houses.

<b>Table 1: Summary of the effect of flooding 14 to 25 August as per 26 August</b>	
Districts affected	21
Dead	114
Missing	156
Injured	93
Families <sup>1</sup> affected (people)	26,108 (130,540)
Families displaced (people)	6,890 (34,450)
Houses destroyed	6,880
Houses damaged	15,981

<sup>1</sup> The number of people per family is on average five.

[The Department of Hydrology and Meteorology records](#) show water level in Koshi, Narayani, Karnali and west Rapti rivers increased above warning level following the heavy rains between 14 and 16 August. The flooding has been particularly bad in the districts of Banke, Bardiya, Dang, Kailali, Salyan, Siraha and Surkhet where many village development committees (VCDs) have been inundated as the river banks overflowed. Around 97% of all affected are in these seven districts.

In Babai River in Bardiya a gauge station was washed away and with it measuring equipment linked to early warning system (EWS). As a result, no EWSs worked which resulted in human deaths in addition to major property loss. However, in the areas by Karnali river the EWS worked very well, with security forces alerting communities to the rising water levels and assisting them in evacuations from the most at-risk areas. As a result, there was very low loss of human lives in Kailali district.

The Nepal Red Cross Society (NRCS) is playing a key role in the response to the situation. NRCS district chapters immediately deployed their trained volunteers to conduct rapid assessments and provide relief services to the affected people as the flooding started. Preparedness stocks have been dispatched to the affected districts and distributions are ongoing. However, access to the affected areas has been restricted due to the inundation of entire villages and blocked roads. The situation is getting better, but travel, especially in the remote areas, remains problematic. Government security personnel (Nepal army, armed police force and Nepal police) and NRCS volunteers have evacuated affected families from high-risk areas to take emergency shelter in the schools and public places. Some families are also still living in open places with little protection from the elements.

IFRC country office, supported by the deployment of an Operations Coordinator from the Asia Pacific Zone Disaster Management Unit, has been giving continuous support to the NRCS in operational planning and coordination, keeping partners and the global system informed about the situation and accessing IFRC funding mechanisms on behalf of NRCS. In addition, the AP Zone technical support team (i.e. Health, Shelter, Logistics, etc) has also provided technical review on the operation plan. An [Information bulletin](#) on the current situation was issued on 17 August followed by an DREF allocation for CHF 249,709 launched on the August 21 to meet the immediate humanitarian needs of 4,000 families (20,000 people)..

[Click here to go to the map of the affected area.](#)

The floods and landslides have damaged infrastructure such as roads connecting district headquarters to the affected communities, 20 schools, 8 health facilities, bridges, culverts, local markets, transport vehicles as well as livestock, crops and daily consumables. Highways, linking Banke to Bardiya, Nepalgunj to Surkhet and Surkhet to neighboring districts have been blocked due to landslides and floods. Furthermore, floods have swept away five suspension bridges in Surkhet which is making daily movement for those affected even more challenging. First responders of the government and NRCS in five VDC's in turn face challenges in gaining access to these areas. The communication network and electricity supply are greatly restricted due to fallen electrical and telecommunication poles. Drinking water supply systems have been disrupted in Surkhet valley while water sources connected to the hand pumps have been contaminated in the southern plain area due to water inundation. More detailed information about the infrastructural damage and expected repair times for roads and bridges is still pending.

As noted, a vast majority of the affected are in seven districts, six in the mid-western region of Nepal and one in the Eastern Terai region. These districts are located on the lowlands (Terai), except Surkhet and Salyan which are in the hilly-region.

S.N.	Name of districts	Disaster type	No. of VDCs/ Muni.	No. of people			No. of families		No. of houses destroyed	
				Dead	Missing	Injured	Displaced	Affected	Fully	Partially
1	Chitwan	Flood/ landslide	3	2	0	0	23	95	23	72
2	Lalitpur	Landslide	3	3	0	0	1	1	1	0
3	Kailali	Flood	18	0	1	8	106	3178	106	635
4	Khotang	Landslide	1	1	0	0	0	0	0	0
5	Rukum	Landslide	2	3	0	3	2	8	2	6
6	Banke	Flood	19	6	5	0	1277	3778	1277	2278
7	Salyan	Landslide	8	7	4	7	97	319	103	13
8	Jajarkot	Landslide	2	2	2	11	36	36	36	0
9	Dhanusha	Flood	3	1	2	0	1	0	1	0
10	Bardia	Flood	23	23	23	0	3023	14535	3023	11512
11	Surkhet	Flood	15	33	93	38	1679	2936	1679	1257
12	Siraha	Flood	11	1	1	7	83	199	67	132
13	Dang	Flood	9	15	23	2	475	514	475	0
14	Routahat	Flood	5	0	0	0	23	369	23	0
15	Udayapur	Flood	4	1	0	1	2	60	2	58

16	Rolpa	Landslide	6	4	1	6	6	6	6	0
17	Mahottari	Flood	4	0	0	0	15	23	15	8
18	Gorkha	Landslide	5	3	0	8	16	16	16	0
19	Achham	Landslide	2	1	0	2	10	10	10	0
20	Kaski	landslide	1	3	1		12	12	12	
21	Sindhupalchok	Landslide	1	5			3	13	3	10
<b>Total</b>			<b>145</b>	<b>114</b>	<b>156</b>	<b>93</b>	<b>6,890</b>	<b>26,108</b>	<b>6,880</b>	<b>15,981</b>

Source: NRCS district chapter and Government of Nepal

Health officials are worried about a potential cholera outbreak after flooded sewage mixed with landslides in the region, as cholera is endemic in Nepal. There are reports of increased cases of diarrhea, but the situation still appears manageable locally at this point in time. The authorities are closely monitoring the health situation in the affected areas and NRCS stands ready to assist, should there be a need. In the meanwhile, NRCS volunteers will assist in mitigating health risks through disease prevention, health and hygiene promotion coupled with ensuring access to safe water and sanitation facilities through material distributions.

The rains gradually receded after August 16 and the water levels are now going down in the affected areas. Currently, forecasts and river water level monitoring shows no elevated risk of new flooding, but the monsoon will only withdraw in about six weeks and more heavy rains could still potentially aggravate the situation, and the prepositioned stocks are being emptied. Due to the situation, the Government of Nepal has announced a decision to suspend parliament activities for seven days for all parliamentarians to go and visit relevant and affected constituents.

The floods and landslides during the monsoon season have so far resulted in 299 deaths and 155 people missing throughout the country (June 10 to August 25). Floods and landslides hit several districts of Nepal every year; however, as noted, the impact is severe this year in comparison to the last few years and significant flooding has occurred in a very high number of districts at the same time. The last major flood operation for NRCS was the Koshi river floods in 2008, when 70,000 people were displaced in the east of the country. The numbers currently reported from the affected districts are roughly on the same level as the 2008 situation.

*Note that this EPoA represents the overall NRCS operations, which includes some bilateral contributions as well as funding and in-kind support from other partners such as the World Food Programme (WFP) and UNICEF. As such, the operational strategy and logical frameworks includes all activities that are planned to be implemented. However, the current total of bilateral and partner agreement contributions of approximately CHF 107,500 are not included in the Emergency Appeal budget of CHF 2,463,646. The total budget for the overall NRCS operation is thus currently CHF 2,571,146. The contributions from Belgian Red Cross/Flanders are included in the budget, as replenishment is sought through the appeal.*

## Summary of the current response

### 1. Overview of Red Cross and Red Crescent Movement

#### Host National Society

NRCS, with a presence in all 75 districts of the country, plays a critical role in national disaster response in Nepal. NRCS is a member of several key disaster management bodies and groups together with the authorities and implements projects and programmes with multiple partners, including organizations outside of the Red Cross Movement. Operationally NRCS has a central role when it comes to distributions. NRCS is a member of the District Disaster Response Committees (DDRC) through which all relief items are coordinated. As such, NRCS is involved in the planning for distributions, and often does distributions on behalf of other organizations and the DDRC.

In this current situation, NRCS district chapters immediately deployed response teams on 14 August when the flooding started to carry out assessment, assist the authorities and security forces in in evacuations, search and rescue and dead body management and to undertake relief management and provide first aid services in all affected areas. So far three National Disaster Response Team (NDRT) members have been deployed. District Disaster Response Team (DDRT), Community Action for Disaster Response in Emergency (CADRE) and first aid teams have also been mobilized and deployed. In total, 172 volunteers and 43 staff have been involved in the operation in the affected districts. It's projected that the operation will involve a total of 408 volunteers.

NRCS warehouses have been dispatching relief materials regularly to the affected districts, which is depleting the stock of relief items. When the flooding started, NRCS had a stock of 4,000 non-food relief items (NFRI) sets throughout the country that are now being dispatched and distributed, coupled with additional tarpaulins and blankets from local stocks. The NRCS headquarters has continuously been getting requests from affected districts to send additional NFRI sets to meet the need of displaced and affected population and central and regional warehouses in Birgung and Nepalgunj has already dispatched 2280 NFRI set. NRCS has so far received distribution reports from districts of 1,873 NFRI sets, 450 tarpaulins and 694 blankets, reaching more than 9,000 people. Detailed assessment is being carried out in Kailali, Dang, Bardiya and Surkhet districts. The NRCS and IFRC shelter officers have deployed to Banke and Bardiya for additional assessments and further validation of current data.

NRCS Kailali district chapter is managing the distribution of ready-to-eat food (biscuits, beaten rice, instant noodles) in coordination with local organizations. Additionally, other district chapters have been using their own preparedness stocks such as tarpaulins, blankets, NFRI, kitchen sets, soaps, water purifying agent, oral rehydration solution (ORS) and local resources and donations to assist affected families. Reports are still being received on the exact amounts distributed.

With support from Belgian Red Cross/Flanders, NRCS headquarters dispatched 200 bottles of chlorine solution (each bottle contains 240 ml enough for purifying 1,200 litre of water) from its central warehouse to the mid-western regional warehouse in Nepalgunj. The chlorine solution bottles will further be dispatched in the disaster affected districts and finally trained volunteers will distribute them in the affected communities for household water treatment purposes.

<b>Item and unit</b>	<b>Quantity</b>
Tarpaulin (piece)	1
Nylon Rope (meters)	10
Blanket (piece)	2
Female Sari (piece)	1
Male Dhoti (piece)	1
Suiting Cloth (meters)	3.5
Print Cloth (meters)	7
Plain Cloth (meters)	2
Tericotton Cloth (meters)	4
Water Bucket with lid (piece)	1
Kitchen Utensils (set)	1

NRCS headquarters is keeping additional National Disaster Response Team (NDRT), CADRE, DDRT, and first aid volunteers on stand-by for deployment as needed. NRCS district chapters have been represented in the District Disaster Relief Committee (DDRC) meeting in all concerned districts. Upon request from Bardiya and Surkhet district chapters, the NRCS headquarters deployed three NDRT trained staff for coordination, assessment and relief distribution.

NRCS has asked the IFRC for international support and on 21 August a DREF of CHF 249,709 was launched to ensure the response to immediate humanitarian needs of up to 4,000 families (20,000 people). This EPoA is being prepared for a preliminary Emergency Appeal, with technical and coordination support from the IFRC.

NRCS has also agreed with WFP and UNICEF to implement activities on their behalf. NRCS will distribute food to 40,000 people in the form of 21-day rations in four of the worst affected districts. With funds and material from UNICEF, NRCS will implement a part of the WASH activities covered in this EPoA. Both agreements are included as activities in this EPoA, but not included in the appeal budget.

Nepal Red Cross Society has been coordinating all relief efforts from its Emergency Operation Center (EOC) at National Headquarters. All concerns chapters are feeding updated data to the EOC. NRCS has regularly been taking part in the emergency meetings of Central Natural Disaster Relief Committee (CNDRC). The National Emergency Operation Centre (NEOC) and Local Emergency Disaster Management Authority (LEMA) have been activated and NRCS has also been represented at both levels. NRCS headquarters participated in the NEOC on 16 August 2014. In the meetings, the government requested all humanitarian actors to provide immediate ready to eat food, water, sanitation and hygiene (WASH) services and emergency shelter to the affected people.

**The International Federation of Red Cross and Red Crescent Societies (IFRC)**

The IFRC has had a presence in Nepal since 1965 and the currently delegation is run by a Country Representative, one international staff (the coordinator for [Flagship 4](#)) and nine national staff.

In this current situation, the IFRC has been supporting NRCS in monitoring of the situation, in information flow keeping in-country partners and the wider Federation informed about the situation and operation, accessing IFRC funding mechanisms on behalf of the NRCS and continuously providing inputs to coordinate the relief operation to ensure fulfillment of immediate humanitarian needs on the ground. IFRC is participating in different coordination meetings together with NRCS, including NEOC and Humanitarian Country Team.

IFRC, in consultation with NRCS, has launched a DREF on the 21 August. At the request of the IFRC country office, the Asia Pacific Zone Office Disaster Management Unit has deployed an Operations Coordinator to assist with the emergency planning. Further technical support is given remotely from AP Zone Office with a readiness to deploy sectorial technical expertise as needed.

The IFRC shelter cluster role and actions taken are outlined [below](#).

**NRCS and IFRC Coordination**

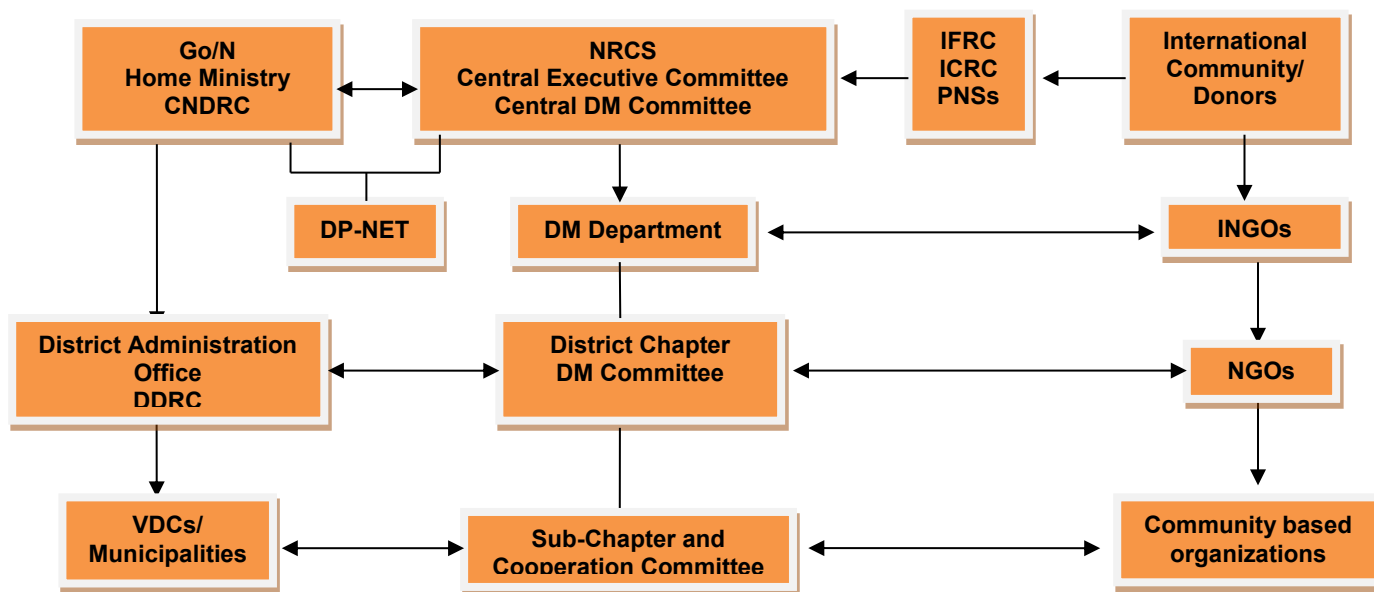
NRCS has 15 partners supporting its 10 programmes, bilaterally and multilaterally. Australian Red Cross, Belgian Red Cross Flanders, British Red Cross, Danish Red Cross, Norwegian Red Cross and Swiss Red Cross have a presence in-country. The IFRC has been informing all concerned PNSs about the daily situation, current needs to be fulfilled and response plans. No coordination meetings have yet been held due to the fact that most PNS representatives have not been present in Kathmandu since the situation started. Extraordinary coordination meetings will be held as needed, outside of the regular coordination mechanisms. NRCS, IFRC, PNS and ICRC meets once a month for

operational/programmatic coordination and a more strategic level coordination group convenes every second month. The next operational/programmatic meeting is scheduled for the last week of August.

For this operation the Belgian Red Cross/Flanders has provided support for water purification liquid, volunteer hygiene promotion kits (one kit for each volunteer) from preparedness stocks that are part of an on-going WASH project in three of the affected districts. In addition, soap and ORS packets from the same preparedness stocks are available. Replenishment for all of the above is sought through this EPoA and the linked Emergency Appeal.

The Danish Red Cross has made 916,000 NPR (CHF 14,000) available for the NRCS for field coordination, transportation of relief items, communication and volunteer mobilization in eight of the affected districts.

NRCS is using its well-established coordination mechanism working around the Central Executive Committee and the Disaster Management (DM) Department. The coordination mechanism is outlined in the graphic below.



### Emergency Shelter Cluster

Together with the Government of Nepal the lead agency of the Department of Urban Development and Building Construction (DUDBC), IFRC and NRCS are the permanent co-leads for the national shelter cluster in Nepal while UNHABITAT is the shelter focal point for recovery under the UNDP lead recovery network. Since the start of the current flooding, IFRC and NRCS have been coordinating with DUDBC and shelter cluster members.

### 2. Overview of non-RCRC actors in country

The Government of Nepal has been organizing regular emergency meetings of the CNDRC. The NEOC and Local Emergency Disaster Management Authority have been activated. All three security forces (Nepalese Army, Armed Police Force and Nepal Police) have been deployed for immediate search and rescue and alerting people to be evacuated and assisting them to move to safer locations as the flooding started.

The government has also mobilized private and government owned helicopters to transport people at risk to safer places, injured people to hospitals and relief materials to the operations site. The two helicopters which were used for two days by the Government have now been stood down.

A disaster rescue control room has been set up and activated under the Prime Minister's Secretariat to bring about coordination at the central level in carrying out all the works. Government of Nepal has started providing compensation of NPR 100,000 (CHF 950) to each of the dead person's family or relatives in the disaster affected districts. The Ministry of Home Affairs (MOHA) has disbursed NPR 17 million (CHF 192,000) for food in four of the worst affected districts and humanitarian agencies, political parties and the private sector is also contributing with cash and kind through the Regional Command Center.

As a health intervention, Response Rapid Team (RRT) has been mobilized immediately to provide necessary health response including surveillance. The Rapid Response Team is an emergency response structure in the District Public Health Office – comprises of RRT Coordinator, Medical Officer, Health Inspector, Vaccination Officer, Health Education technician, Staff Nurse, Vector Control Officer, Lab Technician, Auxiliary Nurse and Midwife. Regional and National Level RRT's are on standby if the districts require additional support. Regional and district medical stores are on alert for appropriate and immediate response to requests received from affected districts. The Regional Medical

Store is regularly supporting the districts in need of medicine. Epidemiology and Diseases Control Division (EDCD) is sending medicine to the affected districts and Regional Medical Store to supplement their stock. District Public Health Offices are disseminating public health messages to affected communities and have deployed a medical team to respond health related hazards and potential epidemic, such as cholera that is endemic in the affected districts. The authorities will also deploy three psychosocial counsellors for the district of Dang, Surkhet and Bardiya to support the assessment and provide psychosocial first aid in the affected communities.

### **Humanitarian Coordination**

A joint cluster meeting was called by the NEOC on 16 August and chaired by the joint secretary of Ministry of Home Affairs (MOHA) and participants included NRCS, UN agencies and other humanitarian organizations. In the meeting, the joint secretary emphasized on the immediate needs of affected people and requested all the humanitarian actors to provide ready to eat food, staple food and transitional shelter along with NFRI materials. Based on the meeting, a Regional Command Center for the Mid-Western Development Region was established in Nepalgunj under the leadership of Regional Administrator (RAO) to coordinate response across the regions.

The Humanitarian Country Team chaired by the UN Residence Coordinator (UNRC) has met several times since the flooding begun. At a meeting on 22 August, it was decided that all key clusters will share information through the Residence Coordinators Office (RCO) and that the cluster planning will for now focus on the first 30 days. UNOCHA sits within the Resident Coordinator's Humanitarian Support Unit.

Nepal has a permanent national cluster system led by different line ministries for the different clusters, supported by international co-leads as per the Inter-Agency Standing Commission (IASC) agreements. Cluster meetings are held regularly, but the frequency has been increased substantially for key clusters in this current situation. Besides the shelter cluster, co-led by the NRCS and IFRC, that is in regular dialogue with the DUDBC and cluster members, most clusters are now holding regular coordination meetings, including the clusters for food security, protection, health, WASH and logistics. WFP Head of Logistics has been deployed to Nepalgunj.

NRCS Health Department had attended the National level Health Cluster Coordination Meeting organized by Epidemiology and Disease Control Division. Representatives from NRCS have also attended the protection, WASH, food security and nutrition clusters.

Members of the Protection Cluster are distributing 1000 mosquito nets for pregnant and lactating mothers and 400 pieces of Tarpaulins to Bardiya, Surkhet, and Dang district. On behalf of the cluster, Save the Children has agreed to provide baby kits and clothes for women and children to Bardiya. Plan Nepal, Save the Children, World Vision, Danish Church Aid, Care Nepal, Caritas, SNV and others have been supporting the affected population with smaller amounts of cash and kind (mostly NFRI and food). Consolidated distribution figures are to be established through the gap analysis that is being finalized.

### **Needs analysis, beneficiary selection, risk assessment and scenario planning**

Joint rapid assessment is being conducted in coordination with the District Disaster Response Committee (DDRC) in the affected districts. The NRCS headquarters is receiving assessments reports from all affected districts on a daily basis. The preliminary analysis done at district and headquarters level indicates the following priority needs of the affected population:

- Emergency shelter and support for re-building/repairing damaged houses
- Non-food relief items
- Food security, nutrition and livelihoods
- Basic health services (first aid, health in emergency services, disease prevention and health promotion)
- Safe drinking water, sanitation and hygiene promotion
- Tracing/restoring family links services
- Psychosocial support

According to Initial Rapid Assessment reports received from district chapters, there is a clear gap for ready to eat food, emergency shelter assistance, NFRIs and WASH interventions to meet immediate humanitarian needs of approximately 26,000 families (133,000 people) displaced or affected (damaged houses) in the affected districts. The affected and especially the displaced population are struggling to manage daily food, shelter and water required to sustain their lives. Sources of drinking water have been contaminated due to inundation from flood water resulting in limited availability.

Assessments are still being carried out in all affected areas, including several detailed assessments that have been initiated, in the 21 districts and further information will be obtained in the coming days. The number of affected and displaced have started to go down, which is either an indication that people are returning to their places of origin or a result of validation of initial rapid assessment data – likely a combination off the two.

The more detailed needs assessment has been broken down into cross-cutting issues and sectors below.

## Cross-cutting issues

In this situation, issues around protection are likely to emerge as the assessments go forward. Gender issues such as gender-based violence, cultural traditions linked to female menstruation, promiscuity in emergency evacuation shelters, labour migration patterns that leave households headed by females temporarily must also be taken into account in implementation design as cross-cutting issues.

## Shelter and settlements (and household items)

With close to 23,000 houses destroyed and damaged and close to 7,000 families displaced and taking shelter in emergency evacuation locations or in the open there are significant shelter needs in the short, medium and long-term. There is currently a pressing need for emergency shelter assistance, as many of the displaced have constructed provisional make-shift shelters. The displaced population and a portion of the affected are also in need of basic household items, as these have been lost to or damaged by the flood waters.

Reports from the affected areas indicate that the displaced population is, at this point in time, quite mobile. In some areas the flood waters have receded, allowing people to return to their place of origin to assess damage. It will take some time to establish what the medium- to long-term needs will be and the most appropriate response to shelter needs will likely vary across the affected areas and groups of beneficiaries. However, there will be a clear need for shelter repair assistance and support to rebuilding of destroyed houses as part of an early recovery/recovery intervention. These shelter responses will be closely integrated with WASH, livelihoods and health interventions.

With regards to the displaced families in Bardiya district, more than 2,000 families have temporarily settled in at least 43 different locations, and similar pictures are likely to emerge as more detailed assessment data is coming in. However, there is as of yet no systematically initiated camp arrangements for the displaced.

A specific shelter issue that needs urgent attention is related to the schools being used as emergency evacuation shelters. There are at least 70 schools being utilized as emergency evacuation shelters which has disrupted the school year that has already started. The needs related to this situation will depend on local solutions and would involve either emergency/transitional shelter solutions for the displaced or temporary arrangements for the school children on or near the premises. In case of the latter, the suitability of the school premises for the number of people sheltered must be analyzed, for example with regard to water and sanitation.

The shelter cluster is proposing an intervention where all families with fully destroyed houses receive a full NFRI set (which includes shelter material) and recovery transitional shelter assistance. Half of the families with damaged houses are assumed to be in need of NFRI sets as well as shelter kits for repairs of their property. The two tables below outline the resources available in-country of different organizations, including NRCS, the needs according to the shelter intervention strategy and the gaps (as per information available on 25 August). The strategy will be continuously revisited by the shelter cluster, especially with regard to the immediate shelter needs of those with fully destroyed houses where the shelter material in the NFRI sets might not be sufficient.

### Gap analysis for NFRI sets

Level of damage	# of houses <sup>2</sup>	NFRI target	Needs	Total needs	Available in-country <sup>3</sup>	Gap
Full destroyed	6,880	100%	6,880	14,865	7,000	7,865
Partially destroyed	15,981	50%	7,985			

### Gap analysis for Shelter kits

Level of damage	# of houses <sup>4</sup>	Shelter target	Needs	Total needs	Available in-country <sup>5</sup>	Gap
Full destroyed	6,880	0%	0	7,985	3,755	4,320
Partially destroyed	15,981	50%	7,985			

## Food security, nutrition and livelihoods

District authorities have expressed that staple food would be required for at least four months to the displaced people whose houses have been completely destroyed and some food support would be required to the temporary displaced who lost their food grains for at least two months. While many agencies have committed to provide support for food provisions, it is difficult to assess the exact need. There are preliminary reports of losses of crops, cattle and storage of food grains/seeds in the flood affected areas. This situation can lead to longer term food scarcity and livelihoods challenge that will require attention while undertaking early recovery initiatives after the immediate 30 day needs are addressed.

<sup>2</sup> As per data from August 26

<sup>3</sup> Including NRCS preparedness stocks of 4,000 NFRI sets

<sup>4</sup> As per data from August 26

<sup>5</sup> Including NRCS preparedness stocks of 1,000 shelter kits

## Health

Nepal experiences regular outbreaks of infectious diseases that frequently accompany disasters, with acute watery diarrhea and cholera taking the largest human toll in Nepal every year<sup>6</sup>. Such outbreaks are seasonal – concentrated around monsoon period – and are compounded by a lack of health facilities and trained human resources, widespread poverty and a common lack of health awareness..

In 2010, IFRC launched an [Emergency Appeal](#) on behalf of NRCS for a Potential diarrhoea outbreak in the mid-western region. With collaborative efforts by NRCS and the health authorities, the outbreak was quickly contained with only 65 deaths and 4,000 cases reported. Furthermore, a cholera outbreak occurred in Nepal after the monsoon season in 2009 infected 50,000 people and killed 268 people in the eastern parts of the country. Therefore during 2014 rainy season, the health authorities are proactively working to prevent any outbreaks of epidemics diseases in the affected areas<sup>7</sup>, as diarrhea and acute respiratory infection (ARI) annually affected the population in the seven currently worst affected districts<sup>8</sup>. The same population is also at high risks of Malaria and Dengue. In 2010/2011, many districts including Kailali, Banke, Bardiya, Dang, were affected by Dengue outbreaks.

In this current situation many people living in temporary shelters reported suffering from fever and respiratory symptoms. Other health issues that can be expected in this situation are infections of the eyes, skin, respiratory and gastro-intestinal systems, resulting from the water being contaminated in the flood affected areas, lack or absence of hygiene and sanitation measures and facilities, and crowded temporary shelter arrangements. In Bardiya, a growing number of flood victims<sup>9</sup> has been visiting the free health camp run by mid-western regional police hospital. The fever has gripped Padnaha, Bagnaha and Gulariya village of Bardiya District. However, the health authorities at district level have not yet reported caseloads that would make normal services inadequate.

The affected population, especially those displaced, is in need basic health services that the health authorities are able to provide in this current situation. However, to keep the caseload down and to prevent the spread of various flood-related infectious diseases and epidemics, targeted disease prevention and health promotion activities are as important, coupled with hygiene promotion (see water, sanitation and hygiene promotion below).

The floods have resulted in more than 100 deaths, displacement and loss of property and assets. As such, a proportion of the population is in need of psychosocial support.

## Water, sanitation and hygiene promotion

The floods and landslides have disrupted water supplies, sanitation facilities and people's hygiene practices, exposing the affected population to significant health risks. Many of water points have been washed away or submerged due to floods in the affected districts and water sources have been contaminated. Hence the immediate WASH needs include provision of safe water, emergency toilets and hygiene promotion activities. In addition, as there is possibility of outbreaks of diarrhea and water-related diseases especially in the evacuated places, provision of oral rehydration solution coupled with hygiene promotion together with health teams is needed.

The WASH clusters estimates are that there is a gap of around CHF 1,000,000 for local procurement of WASH material, including aqua tab, purification liquid, hygiene kit, bucket and mug. The amount does not yet include WASH hardware for emergency toilet.

## Restoring family links

Reports from the field indicate a need for RFL support and request for tracing has already been received. There is also a need to advocate with the authorities for proper burial of unidentified bodies. At least 106 reported dead in the latest round on flooding and 155 missing.

## Likely evolution and Risk Assessment

The likely evolution of the situation is difficult to assess with the limited data available at this point in time. However, those who have lost their homes will remain in temporary shelter arrangements for several months to come. Some of them can be expected to return to their place of origin, if they are able to arrange for temporary shelter solution there. Others might stay in various evacuation points, including spontaneous or formal formations of camps, and with host families. There are already reports of displaced returning to their homes or place where their home used to be, and as such, a planning assumption could be that 50% of the current displaced (i.e. around 3,500 families) remain displaced beyond the immediate relief phase of 30 days. However, that figure has to be confirmed through the ongoing assessments. Those who have been affected by the situation, but not displaced or only temporarily displaced and their houses are not totally destroyed, will be less vulnerable as they can start to rebuild their lives in their old locations, with some shelter and relief assistance.

<sup>6</sup> Vulnerability, Risk Reduction, and Adaptation to Climate change, April 2011. World Bank.

<sup>7</sup> <http://www.ibtimes.co.uk/cholera-fears-floods-devastate-nepal-1461473>

<sup>8</sup> Annual Health Report 2012/2013

<sup>9</sup> [http://www.myrepublica.com/portal/index.php?action=news\\_details&news\\_id=81586](http://www.myrepublica.com/portal/index.php?action=news_details&news_id=81586)

As of now, there are indications of elevated numbers of diarrhea cases but no indications of epidemics as such. Cholera is endemic in Nepal and the risk of an epidemic of cholera or other relevant communicable or water borne disease is taken into account in the planning, with volunteers on stand-by to assist the authorities.

The monsoon season continues well into September and additional rains leading to floods, flash floods and/or landslides cannot be ruled out, which could lead to a deterioration of the current situation. Already now, available resources in-country are stretched and should the situation change for the worse with more displaced and affected, relief items will have to be mobilized from outside of the country. The Department of Hydrology and Meteorology is monitoring water levels in key river systems, and thus far all rivers have remained below danger level after the heavy rains started to recede on 16 August.

As the affected areas are scattered and located in remote areas, logistical arrangements remain key challenge and risk. Assessment teams and responders are reporting several challenges to gain access in the areas affected due to roads being blocked and continuous rain.

## B. Operational strategy and plan

### Overall objective

The overall objective of the operation is that the immediate humanitarian and recovery needs of a total of 10,000 families (50,000 people) displaced by floods and landslides in 21<sup>10</sup> districts of Nepal are met through the provision of emergency shelter assistance, WASH, Psychosocial support, NFRIs, RFL and early recovery assistance. The focus will be on the seven currently worst affected districts (Banke, Bardiya, Dang, Kailali, Salyan, Siraha and Surkhet) and the 2 August landslide area – Sindhupalchok. The targeted population is primarily those displaced by, and secondarily those affected by, floods and landslides according to beneficiary selection criteria outlined below. An appropriate and, based on the information available, likely comparatively small part of the relief and shelter assistance will be directed to the remaining 13 districts based on needs.



NRCS volunteer distributing non-food relief item package to the people affected by floods in Dang district; Photo: NRCS

### Proposed strategy

The NRCS, utilising its staff and volunteers across the affected areas, has been actively engaged in response immediately after onset of disaster and they are in the affected areas rendering relief services. Currently the operation is focused on continued assessments and relief materials distribution for affected population. However, recovery planning has already commenced in preparation for more detailed assessments. A revision of this EPoA and the operational strategy is expected to be done during September, based on detailed assessments. The emergency period has been provisionally set at 30 days by the Humanitarian Country Team, pending more information about how the situation evolves.

### Areas common to all sectors

So far, a total of 172 volunteers and 43 staff have been deployed for evacuation, relief distribution and assessments, including members of the District and National Disaster Response Team (DDRT/NDRT). Currently it's foreseen that some 408 volunteers will be mobilized throughout the operation and the affected districts and the mobilization costs are included in the budget for this EPoA.

Initial rapid assessments have already been initiated in several districts. In the first half of September, as the situation is expected to stabilize (i.e. less mobile population, receded waters), further detailed assessments in targeted areas are being planned in September.

<sup>10</sup> The 21 affected districts included Sindhupalchok, the district where a massive landslide took place on August 2, since flooding has occurred in the district on August 25.

NRCS is using Rapid mobile phone-based (RAMP) survey for various types of information gathering. The options of using RAMP in the detailed assessments will be explored and provision has been made in the budget for additional smartphones as well as a one-day orientation on RAMP for volunteers. Budget provisions for technical support can also be used to expand and establish the use of RAMP in additional districts, if/as needed.

Gender and protection related issues will be taken into account in these assessments, for example cultural practices related to female menstruation, promiscuity in shelters, labour migration patterns that leave households headed by females temporarily etc. In the affected areas NRCS has 16 volunteers trained in gender-based violence (GBV) in humanitarian settings. These will be part of the mobilization of volunteers to assess immediate and longer-term GBV needs. The assessment results will be built into the continuous planning and design across the operation.

### **Health**

*NRCS will target 10,000 families with health promotion activities, train volunteers for the intervention and enhance the immediate and future capacity for emergency health interventions, including epidemic control using the Epidemic Control for Volunteers (ECV) toolkit and Psychosocial Support (PSS).*

NRCS currently has three volunteers who are Epidemic Control for Volunteers (ECV) trainers in the affected districts and 10 who are trained on PSS. Three additional ECV trained volunteers from neighbouring districts will be mobilized. Together, these volunteers will be used for immediate health and PSS assessments and coordination, including with the Health cluster. They will also facilitate a regional training (ECV and PSS) for around 30 volunteers. These newly trained volunteers will implement the disease prevention and health promotion activities as well as possible PSS activities (pending assessments).

NRCS will also keep a preparedness level to mobilize additional volunteers to assist the health authorities in disease monitoring/surveillance in communities, and mobilization of the affected population for medical team visits and vaccination campaigns, if/as needed and requested by the authorities. NRCS HQ will dispatch 20 stretchers to the seven districts for volunteers to use in First Aid and in referrals in support of the health authorities.

As a National Society capacity building measure, one regional ECV and one regional PSS trainings will be held in the later stages of the operation to ensure NRCS has enhanced capacities and resources to respond to health emergencies in the future. Several ECV trainings have already been held, but the geographical focus has thus far been on other parts of the country.

### **Water, sanitation and hygiene promotion**

*Utilizing WASH trained volunteers, reinforced through new trainings, NRCS will target 10,000 families with the distribution of WASH material coupled with hygiene promotion activities. In addition, NRCS will provide 730 emergency toilets. As a longer-term risk reduction intervention, NRCS will rehabilitate and improve water sources in both the hilly area and on the lowland.*

The WASH intervention will for now focus on five districts, based on reports from Kailali of limited needs as the situation is already improving. In the five districts, a total of 146 volunteers will receive orientation and refresher sessions on WASH response to carry out water, sanitation and hygiene promotion interventions. Water purifying agent and aqua tab, soap and oral rehydration solution (ORS) will be distributed to the affected people, based on percentage assumption for different items. A provision in the budget has been made for emergency maintenance of damaged water sources where small repair can improve the immediate access to water. A total of 730 emergency toilets will be constructed to replace damaged or destroyed toilets and by temporary settlements and possible camps, as needed. Of those, 400 will be funded by UNICEF.

The budget has a provision for the procurement of 300 volunteer kits for hygiene promotion. If sufficient funding is available, it's projected that NRCS might reach more families than initially planned, as additional volunteers can bring the kit back to their communities.

As a longer term risk reduction effort, NRCS is planning to rehabilitate and improve water schemes in Surkhet and Salyan (hilly zone) and provide elevated platforms for tube well in the most flood prone areas in Banke, Bardiya, Dang, Kailali, Siraha in the Terai (low lands) to reduce the risk of damaged/unusable or contaminated water sources in future seasonal flooding events. In the lowlands in the affected districts, many tube wells do not currently have proper elevated foundations, which easily leads to damage to the pumps and/or contamination of the water source in flooding situation. NRCS will provide communities in the most flood prone areas, as identified in hazard mappings, with a total of 300 elevated platforms for tube wells. Correspondingly, in the hilly area, water schemes making natural water sources such as springs and brooks usable, are easily damaged or destroyed by flood waters or landslides. NRCS will identify and prioritize a total of 24 water schemes that need to be rehabilitated and improved, and work with communities to do so.

## **Shelter and settlements (and household items)**

The proposed shelter intervention comprises of three stages of intervention:

1. *Immediate needs of household items will be covered through the provision of non-food relief items (NFRI) sets, tarpaulins and blankets to 10,000 families whose houses have been destroyed or damaged. In addition, tarpaulins and blankets distributed from local chapters emergency stocks will be replenished...*
2. *NRCS will provide emergency shelter and emergency repair assistance to 3,795 families through the distribution of shelter kits to families whose houses have been damaged as immediate shelter repair assistance.*
3. *Recovery repair/rebuild assistance through in-kind and/or cash transfer programming to 1,200 families through an implementation design that utilizes material distributions or cash transfers – or a combination of the two – with different levels of support to different categories of affected. The average support to these families is estimated to be on average 25,000 RPN (CHF 263). Aspects of the Participatory Approach for Safe Shelter Awareness (PASSA) will be utilized in the intervention. Issues linked to land ownership will be carefully considered in the design of the repair assistance.*

Overall, the NRCS emergency intervention will contribute to around 40% of the overall needs in shelter kits and 65% of the overall needs in NFRI set. NRCS will follow the situation related to schools closely together with the relevant authorities and members of the shelter cluster and Camp Coordination and Camp Management (CCCM) cluster.

## **Food security, nutrition and livelihoods**

*NRCS contribution to the food needs will be the distribution of food on behalf of the WFP as per the agreement between NRCS and WFP. As per the agreement NRCS will distribute 21-day rations to 40,000 people. The costs of the distributions are reflected in this plan (i.e. in the number of volunteers), but not in the budget.*

Possible medium- and longer-term food related issues for the affected population where NRCS can assist will be explored as part of the detailed assessments. NRCS does have experience in livelihoods programming, and will consider such interventions based on detailed assessments and available support. No budget provision has yet been made for such intervention.

## **Restoring family links**

*Restoring family link (RFL) service will be provided in Surkhet, Bardiya and Dang. A total of 12 trained volunteers will be mobilized for RFL need assessments, tracing/reunification and to advocate with the authorities on dignified management of the unidentified dead. To increase the number of RFL-trained volunteers, training will be arranged after the immediate emergency phase.*

## **Disaster preparedness and risk reduction**

*To be better prepared for future disasters, NRCS plans to increase its preparedness stocks with 2,500 NFRI sets and 1,000 shelter kits, to ensure more relief items are readily available for immediate disaster response. In addition, as a risk reduction intervention as part of WASH, NRCS will rehabilitate and improve 24 water schemes in the hilly zone and provide 300 elevated platforms for tube well in the most flood prone areas of the districts in the low lands (see proposed WASH intervention for detail).*

NRCS has a target of keeping 18,000 NFRI sets as preparedness stocks throughout the country, based on warehouse capacity and the hazard profile of the country (which includes the risk of a major earthquake). However, small-scale disasters throughout the year typically triggers the distribution of up to 10,000 NFRI set that are difficult to source replenishment funds for. Because of this, NRCS preparedness stocks were down to 4,000 NFRI sets when the flooding started. These will be replenished, and as part of the appeal NRCS seeks support to procure and additional 2,500 NFRI sets to build the preparedness stock levels up. Similarly, NRCS had preparedness stocks of only 1,000 shelter kits when the flooding started. Through replenishment and support for additional preparedness stocks, NRCS is looking to double that amount, in an effort to increase preparedness.

In the recovery shelter assistance activities, risks will be reduced through using aspects of the Participatory Approach for Safe Shelter Awareness (PASSA).

As a preparedness measure, 120 diarrhea prevention kits (first aid kits, zinc tablets, water purification tablets, soap and ORS) and 240 personal protection kits (apron, boots, gloves etc.) procured and pre-positioned for future emergencies. In the ongoing operations, the WASH intervention already holds the items that are included in the diarrhea prevention kits and the immediate need for stretchers will be covered from existing stocks and then replenished. The immediate need for additional personal protection material will be assessed.

Currently, the projection is that a total of 408 volunteers will be involved in the operation to various degrees. They will all be insured for 2014 and 2015 through the IFRC global volunteer insurance scheme. In addition, as a preparedness measure, based on hazard mapping (i.e. likelihood of disasters), an additional 1,000 volunteers in key districts

throughout the country will be insured, to ensure that volunteers mobilized in small-scale operations through 2014 and 2015 are properly insured.

### **National Society capacity building**

NRCS has recently signed an MOU with the IFRC for the implementation of Resource Management Systems (RMS). Once rolled-out, RMS can have a big impact on disaster response through providing an easy overview of staff and volunteers, their location and level of training as well as assets and stocks available in different parts of the country. Also, the process of data migration to RMS will enhance data and volunteer management through the validation and consolidation of data sets as well as the required data standardization. As such, as part of the National Society capacity building in this operation, NRCS will speed up the roll-out of RMS to be able to utilize the platform during the later stages of the operation and in coming operations. RMS-related activities will include the translation of the RMS platform, manuals and documentation to Nepali. Given challenges with connectivity in many parts of Nepal, the appeal budget also includes partial support to the development of an RMS offline version. Provisions are also made for technical support to the process for training, rollout, user management, data collection and data integrity.

NRCS has for some time been enhancing its planning, monitoring, evaluation and reporting (PMER) capacity. As part of this operation, the option of temporarily seconding and training a few staff from other headquarters departments of districts on PMER will be explored. These would later be available as PMER surge when needed.

In July, prior to the flooding in August, NRCS conducted the last stage of the Organizational Capacity Assessment and Certification (OCAC) process. The results are currently being analysed. Relevant capacity building measurements to enhance issues identified in the OCAC will be considered during September and possibly added to the revised EPoA.

### **Selection of beneficiaries**

The prioritized beneficiaries include the sick and people with special needs, the elderly, female headed households and women and children that are the most vulnerable categories during disasters. These groups will be considered according to level of impact and more priority will be given to those who have lost their houses.

Further assessments will identify others who are vulnerable in this particular context, especially when taking coping mechanisms and socio-economic status into account. It does for example appear that the majority of the affected population is from marginalized communities, particularly in Banke district. These included landless, Dalits and former Kamaiy, a form of bonded labor that has now been abolished. Seasonal labor migration patterns, temporarily creating female headed households, will also be taken into account.

For the recovery shelter interventions, special attention will be given to those who do not own land, as they can be considered particularly vulnerable when it comes to shelter solutions.

## **Operational support services**

### **Human resources**

The operation is expected to involve around 408 volunteers and 43 staff for a number of weeks, and some staff and volunteers will continue to work until the end of the operation. In total, NRCS has already assigned 172 volunteers and 43 staff for assessments in the different affected areas, including providing staff to join Government led assessments together with the DDRC.

This Appeal covers travel, accommodation and per-diem costs related to the staff and volunteers. Pending finalisation of broader insurance schemes, the budget for this EPoA covers insurance for the volunteers used in the operation through the IFRC global volunteer accident insurance scheme and also volunteers in flood prone areas more broadly as preparedness measure (see Disaster Preparedness and Risk Reduction).

The EOCs and operational capacity in both district and National Headquarters level are being strengthened for the management and coordination of the operations and related staff costs are also included in the budget. Current estimates and planning assumption, to be confirmed as the operation continues, is that in the seven worst affected districts a total of 135 full time staff months will be dedicated to the operation. Most of these staff will be temporarily transfer from non-affected districts.

From the IFRC side, provisions will be made for a total of eight technical support missions from the Asia Pacific Zone Office and South Asia Regional Delegation (SARD) during the operations, including technical support to the RMS roll-out. Provision will also be made for a total of three months for a DM Delegate to assist the Country Representative in supporting NRCS in detailed planning and monitoring of the operations and to act as the IFRC focal point for the operations towards NRCS and the wider Movement.

### **Logistics and supply chain**

A total of 12,500 NRFI sets, 3,545 shelter kits, 17,000 bottles of water purifying solution, 70,000 bars of soaps and 90,000 packets of rehydration solution (ORS), 165,000 aqua tabs and 3500 hygiene kits will be procured for

distribution, as replenishment or as increased preparedness stocks, following IFRC standard procurement procedures to ensure audit trail. Besides the option of procuring Shelter or Shelter Tool Kits through Kuala Lumpur, all procurement will be done locally.

The below table outlines the projected procurement for replenishment, distribution and as preparedness stocks for the main relief items in the operation. The numbers will be revised based on final stock reports and validated data from the field.

Items	Total coverage of this EPoA	Replenishment	Procurement for distribution	Procurement for DP stocks
NFRI	12,500	4,000	6,000	2,500
Shelter kit	4,795	1,000	2,795	1,000
Water purification solution	17,000		17,000	
Soap	70,000	52,000	18,000	
ORS	90,000	75,000	15,000	
Aqua tab	165,000		165,000	
Hygiene kit	3,500		3,500	

NRCS has a central warehouse in Kathmandu, 5 regional warehouses and 6 smaller warehouses on chapter level. Decisions around the logistics and timeframes for replenishing pre-positioned stocks used in the zones and branches will be determined once the procurement part of the Emergency Appeal has been implemented and delivery times are confirmed. Transport and distribution costs within the country will be covered from this Appeal budget.

Due to the low levels of preparedness stocks when the current flooding started, NRCS will procure a balance of 6,000 NFRI for distribution, as per current target numbers. Different options are being explored to ensure that additional NFRI will be available during the emergency phase. The first option is to access existing NFRI pre-positioned stocks funded by DFID for earthquake preparedness. Another option is local procurement, utilizing emergency procurement procedures, with delivery in instalments. A tender, originally for longer-term replenishment, has already been launched and can be used for this emergency purpose.

For the shelter kits, the option of using air cargo to fly in 3,795 available shelter kits (shelter tools kits + tarpaulins) from IFRC emergency stocks in Kuala Lumpur on commercial flights is being explored. The transport cost can be justified by the fact that shelter is a critical need in this situation and the current calculated inter-agency gap is more than 5,500 shelter kits. Local procurement to fill that gap would likely be too slow for distributions in a timely manner. A provision for air cargo has been made in the budget. The option of locally procuring tarpaulins and flying in only shelter tools kits is being explored, in an attempt to keep down the transport costs.

NRCS currently has a limited fleet to use for emergency operation. While the option of renting a vehicle will be considered, NRCS is appeal to partners to support with funds for a 4x4 pick-up to be used in the field and in future operations. NRCS has no tax exemption and with very high car taxes in Nepal the procurement price is high, for local procurement but also for imported cars as they are taxed when registered.

### Communications and Beneficiary Communications

NRCS Humanitarian Value and Communication Department is the focal department for internal communications, Beneficiary communications and media relations. Information of disaster responses are regularly being updated on the NRCS Facebook page and airing through the NRCS radio programme. Information has also been updated at NRCS' website ([www.nrsc.org](http://www.nrsc.org)), and at IFRC website ([www.ifrc.org](http://www.ifrc.org)). Similarly, the department, together with the communication focal person(s) in the affected districts chapters, has collected news stories and photographs. The department also works with print and electronic media to obtain news coverage on the situation and the NRCS response activities.

NRCS has identified a need to enhance its capacity in media and communication work, including the effective use of social media. As part of this operation, orientation programmes to the communication focal persons at chapter level on the visual identity guideline of NRCS and photography, will be implemented. Key chapters will also be equipped with cameras and visibility materials. The NRCS Humanitarian Value and Communication Department will also work with the chapters to keep key messages for communication activities relevant and up to date.

Field visits will be conducted to capture materials for web story and best practices reflecting the actual needs and operation in the field in the coming days, and also to liaise with local media in the districts.

Beneficiary communication will be a key aspect in the operation, not least because media reporting has already reflected general criticism and misunderstandings of the ongoing operation. Local FM radios will be approached in order to broadcast key messages regularly, including health and hygiene promotion messages, and NRCS will explore additional options such as interactive radio programme on local radio where beneficiaries can call or send in their questions and opinions on the operation. Similarly, a complaint response mechanism at implementation site will be set up to increase the accountability towards the beneficiaries. Two staff from NRCS recently took part in a complaint

mechanism training in Bangladesh, and will be key resource persons to design a mechanism for this operation. The IFRC Asia Pacific Zone office and South Asia Regional Delegation (SARD) has technical support in beneficiary communications available and such support can be covered from the appeal budget.

Under communication, Information, Education, Communication (IEC) material as well as general information boards for distributions will be printed for the health and hygiene promotion activities.

## **Security**

Difficult terrain and geographical remoteness, harsh weather conditions and damaged infrastructure (roads and bridges) are current realities in the field in Nepal. Despite having problems in getting access to the affected VDCs due to inundation and absence of transportation services, the NRCS volunteers are utilizing locally available facilities, including boats in some places, to carry out assessment and render relief services in affected areas.

NRCS will make provision of Global Insurance for the volunteers deployed in this operation. NRCS enjoy countrywide visibility and respect in Nepal. It has a wide network of community-based volunteers who are trained in first aid, CADRE, DDRT, NDRT and CBDRR. The emblem is respected throughout the country.

Beyond the Red Cross Red Crescent Movement, regular contacts are maintained with local security networks. IFRC country office participate in regular Humanitarian Country Team (HCT) meetings, convened by UN OCHA, and other fora in which national security is considered and discussed.

Since the NRCS, has been closely working together with the community and all three security forces in all affected areas, there are many opportunities to ensure security at ground.

## **Planning, monitoring, evaluation and reporting**

NRCS will oversee all operational, implementation, monitoring and evaluation, and reporting (PMER) aspects of the present operation in the flood and landslide affected districts through its country-wide network of branches, volunteers and staff. The responsibility for day-to-day monitoring of the operation will be with NRCS district chapters supervised closely by national headquarters to ensure appropriate accountability, transparency and financial management of the operation. NRCS PMER unit will continue to involve in the PMER activities especially planning and reporting of the operation at headquarters. Based on this EPoA a monitoring and evaluation plan will be developed.

PMER training, with a focus on monitoring and reporting, will be conducted for the staff and key volunteers involved in the operation. IFRC, through its country office in Kathmandu and the Asia Pacific Zone Office, will provide technical support to NRCS.

The affected districts will be regularly visited by joint IFRC and NRCS monitoring teams on an as needed basis. This will help identify and, where possible and necessary, resolve any problems. The situation in the field will be reported on through daily EOC reports and monthly progress reports. Reports will provide necessary information in relation to the progress of the operation, any changes in the situation during the reporting period, and any particular problem, constraint or unmet needs.

In terms of evaluations and reviews, three separate activities are being considered and provisioned for in the budget. Firstly, during the third month of the operation (October) a real-time evaluation (RTE) will be conducted to provide feedback in a participatory way in real time (i.e. during the evaluation fieldwork) to those executing and managing the humanitarian response. Secondly, a lesson learnt workshop will also be considered as part of the RTE. A review of lessons learnt from the preparedness work ahead of the season as well as the response operation will be conducted jointly between NRCS, IFRC and in-country partners to further develop NRCS, IFRC and partners' capacities. This review and lessons learnt workshop could partly be linked to the RTE. And finally, a final evaluation of the overall operation, coupled with a lessons learnt workshop, will also be carried out after implementation has finished. A final report is expected three months after the operation's end date, incorporating the key lesson learnt and recommendations of the final evaluation.

## **Administration and Finance**

The operation will rely on existing financial management and administration systems in NRCS and IFRC. Provisions have been made for communication costs related to the operation as well as financial charges and general expenses (refer to *budget*). NRCS is one of only two National Societies in Asia Pacific on the IFRC cash transfer system. As such, all financial management is conducted in accordance with the procedure for cash transfer to National Societies. The IFRC country office also has a finance manager, who works closely with the NRCS finance department to ensure quality and on-time financial reporting of IFRC supported programmes and activities. The finance manager is also responsible for introducing policies, guidelines and regulations into the financial management at the IFRC country office.









# EMERGENCY APPEAL

27/08/2014

MDRNP007 Nepal: Floods and Landslides

<b>Budget Group</b>	<b>Appeal Budget CHF</b>
Shelter - Relief	567,289
Clothing & Textiles	426,447
Water, Sanitation & Hygiene	223,253
Medical & First Aid	8,905
Utensils & Tools	146,053
Cash Distributions to Beneficiaries	315,789
<b>Total RELIEF ITEMS, CONSTRUCTION AND SUPPLIES</b>	<b>1,687,737</b>
Vehicles	69,211
<b>Total LAND, VEHICLES AND EQUIPMENT</b>	<b>69,211</b>
Storage, Warehousing	38,100
Distribution & Monitoring	7,996
Transport & Vehicle Costs	152,493
<b>Total LOGISTICS, TRANSPORT AND STORAGE</b>	<b>198,589</b>
International Staff	36,000
National Society Staff	74,814
Volunteers	56,443
<b>Total PERSONNEL</b>	<b>167,257</b>
Consultants	25,000
<b>Total CONSULTANTS &amp; PROFESSIONAL FEES</b>	<b>25,000</b>
Workshops & Training	26,579
<b>Total WORKSHOP &amp; TRAINING</b>	<b>26,579</b>
Travel	24,842
Information & Public Relations	20,700
Office Costs	17,805
Communications	3,789
Financial Charges	4,737
Other General Expenses	64,362
Shared Office and Services Costs	2,676
<b>Total GENERAL EXPENDITURES</b>	<b>138,910</b>
Programme and Services Support Recovery	150,363
<b>Total INDIRECT COSTS</b>	<b>150,363</b>
<b>TOTAL BUDGET</b>	<b>2,463,646</b>



# Nepal: Floods and Landslides

