

www.ifrc.org
Saving lives,
changing minds.

Emergency Plan of Action (EPoA) Democratic Republic of Congo (DRC): Ebola Virus disease

 International Federation
of Red Cross and Red Crescent Societies

DREF Operation	Operation n° MDRCD015; Glide n° EP-2014-000118-COD
Date of issue: 30 August 2014	Date of disaster: 24 August 2014
Operation manager (responsible for this EPoA): Viviane Nzeusseu, Central Africa Regional Health Coordinator	Point of contact (name and title): Viviane Nzeusseu, Central Africa Regional Health Coordinator
Operation start date: 29 August 2014	Expected timeframe: 3 months
Overall operation budget: CHF 256,399	
Number of people affected: 249,558 people in Boende	Number of people to be assisted: 5,000 Households (about 25,000 people)
Host National Society(ies) presence (n° of volunteers, staff, branches): 130,000 volunteers, 11 branches, 150 staff members	
Red Cross Red Crescent Movement partners actively involved in the operation (if available and relevant): N/A	
Other partner organizations actively involved in the operation: Ministry of Health	

A. Situation analysis

Description of the disaster

Since 24 August 2014, the city of Boende, located about 300km East of Mbandaka (capital of Equateur) has been facing an outbreak of gastroenteritis and haemorrhagic fever. Boende is part of the Tshuapa District in the Equateur province (North West) and includes an estimated population of 249,558 residents, an area of 10,775km with a density of 24 inhabitants per km in 33 areas.

Since the first cases reported, the epidemic has spread to the neighbouring areas of Lokolia, Watsikengo, Mondombe Ngele, Bokoto and Ikonge. To date, 63 cases have been recorded and 13 deaths registered, in an area which is 60km distant from Boende.

The first outbreak of Ebola reported in the DRC was in Yambuku (Equateur province) and another isolated case occurred in 1977 in Tandala (325 km from Yambuku). The disease reappeared in the town of Kikwit and its surrounding areas (Bandundu province), in Mweka (Kasai Occidental) and in the District of Haut-Uele (Eastern Province). This is the second time the Equateur province is affected by Ebola.

Summary of the current response

Overview of Host National Society

The Red Cross of the Democratic Republic of the Congo (RCDRC) has a long experience of managing natural disasters (including floods, volcanic eruptions, landslides and population movements) and armed conflicts. With regards to health, the country has experienced three Ebola outbreaks, cholera is endemic in certain localities, and response measures were implemented in the past years for measles, polio and Marburg fever.

Movement Coordination

On 27 August 2014, a crisis meeting has been held in Kinshasa with movement partners, the ICRC and PNSs namely Spanish RC, French RC and Belgian RC, who welcomed the IFRC Ebola response operation.

Overview of Red Cross Red Crescent Movement in country

The RCDRC has more than 100,000 volunteers spread throughout the territory. The National Society has a branch in each of the 11 provinces. However at the moment, in the Equateur province, there is no presence of ICRC nor PNSs.

Overview of non-RCRC actors in country

In August 2014, the "National Preparedness and Response to the Ebola virus epidemic plan" was updated and approved by the Ministry of Health and its partners, including WHO, UNICEF, CDC, and MSF.

Needs analysis, beneficiary selection, risk assessment and scenario planning

Risk Assessment

The RCDRC will target 5,000 households (about 25,000 persons) in the affected district with a sensitization campaign to reduce the impact and spread of the epidemic. The RCDRC also plans to support the government in patient transport, disposal of bodies, disinfection of houses and direct psychosocial interventions and economical support to families who have lost relatives or a significant amount of items or income.

B. Operational strategy and plan

Overall objective

This project aims at helping to prevent and reduce morbidity and mortality due to the outbreak of the Ebola virus in the Equateur province of the Democratic Republic of the Congo.

Proposed strategy

The operational strategy described in the detailed operational plan follow the regional operational framework for the IFRC support to the Ebola Virus Disease response in the following areas:

1. public awareness and community based sensitization
2. community surveillance and contact tracing
3. psychosocial support

The operation will meet the immediate needs of Ebola awareness and sensitization of affected communities and areas at risk and the need to support the government in psychosocial interventions, transport of patients, disposal of bodies and disinfection of suspected infected houses and areas.

The sensitization campaign will be conducted by 150 volunteers supervised by 15 coaches. The volunteers will be selected in the targeted communities based on their status in the community, their availability, communications skills and willingness to work in difficult situations.

For security purposes, sanitation of suspected affected household will not be done by the sensitization volunteers but by the volunteers equipped and trained for handling of suspected cases.

RCDRC volunteers involved in the operation will receive the necessary training to enhance the National Society capacity in community based surveillance and social mobilization. Volunteers will be mobilized, trained and equipped to support the government in referral of suspected cases, transport of patients, disposal of bodies and disinfection of affected or exposed households. 25 Volunteers will be mobilized for psychosocial support of affected or exposed population. All external staff from Equateur province will stay in quarantine for 21 days upon return.

Households with reported affected cases will be sprayed and all contact material destroyed. Replacement of basic household kits will be provided.

The operation will be supported by 1 RDRT supporting the National Society in technical planning, monitoring, implementation, and coordination with government and other humanitarian partners.

Operational support services

Human resources

The Red Cross of the Democratic Republic of the Congo will mobilize its volunteers with the supervision of the National Headquarters to support the branches during the implementation of the operation. 150 volunteers, 15 supervisors, and 1 local coordinator will be involved and supported by a national coordinator and 1 RDRT. The IFRC finance and logistic assistant from the DRC office will support the operation.

Logistics and supply chain

All the supplies will be procured locally except for the Personal Protection Equipment (PPE) and warehouse storage of materials procured locally will be considered. Boende, which is the epicentre of the epidemic, is 300km away from Mbandaka, with cases spread over a radius of 100km and accessibility from Mbandaka by road is a challenge. Since the beginning of the Ebola outbreak, several possibilities are offered directly from Kinshasa by the local private boats (for about 3 weeks), by commercial flights (with 2.5T aircraft) and by humanitarian flights (UNHAS 2.7T , ASF-F 1.2T).

Bicycles and motorcycles will be purchased to allow outreach to isolated communities.

Information technologies (IT)

The country office team will ensure best use of its IT equipment at disposal for the operation.

Communications

The National Society Communications Officer shall support the operation to keep open communications with media channels and to disseminate the work done by the RCDRC. The Red Cross of the Democratic Republic of the Congo will share information on the operation with the authorities. The Secretary General will be responsible for communication to the external stakeholders. The National headquarters would ensure visibility of the work of Red Cross volunteers through local media and visibility materials. Regular updates on the operation will also be provided.

Security

The Equateur province is located opposite the Central African Republic and is home to many CAR refugees. This increases the risk of transmitting the disease in CAR on the one hand, and triggers insecurity related to population movement on the other hand. Volunteers and staff involved in the operation will be protected and provided with PPEs whenever they are working. Global volunteer accident insurance will be activated. Funds have been allocated to provide additional volunteer insurance coverage for illness/epidemic protection. Also, local insurance covering the volunteers exposed to the risk of Ebola will be sought. The NS would provide psycho social support to her volunteers, victims and relatives as the need may arise.

The IFRC has protocol in place for deployment of resources to Ebola affected countries which will be followed for this operation. The evolving Ebola outbreak and its effects on the security situation in the affected countries is monitored by the IFRC security unit and personnel health functions.

Planning, monitoring, evaluation, & reporting (PMER)

The National Society will be supported by the planning, monitoring, evaluation and reporting department of Central African Republic Regional Representation (CARREP) for a better follow-up regarding the timeframe and quality of programming. Supervision of the operation will be done at all levels of implementation: Training, sensitization and public awareness including contact tracing and case management.

Administration and Finance

The finance assistant based at the IFRC Country Office in Kinshasa will support the operation. The National Society has an administration and finance departments which will ensure the proper use of financial resources in accordance with conditions that will be stipulated in the Memorandum of Understanding between the RCDRC and IFRC. The Secretary General has the overall responsibility of managing and coordinating the entire operation.

Contact information

For further information specifically related to this operation please contact:

- **Red Cross of the Democratic Republic of Congo:** M. Jose Tuzolana Nkosa, Secretary General; Kinshasa phone:(243) 34897; email: sgcroixrougerdc@yahoo.fr
- **IFRC Regional Representation:** Daniel Sayi, Regional Representative for Central Africa; Yaoundé; phone: +237 22 21 74 37; email: daniel.sayi@ifrc.org
- **IFRC Zone:** Daniel Bolaños Gonzalez, Disaster Management Coordinator, Phone:+254 20 2835213; email: daniel.bolanos@ifrc.org
- **In Geneva:** Cristina Estrada, Operations Support, Phone: +41 22 730 4260, email: cristina.estrada@ifrc.org
- **Regional Logistics Unit (RLU):** Rishi Ramrakha; Phone +254 20 283 5142, email: rishi.ramrakha@ifrc.org

For Resource Mobilization and Pledges:

- **IFRC West and Central Africa:** Elisabeth Seck, Resource Mobilization Officer; phone:+221 33 869 36 60; email: elisabeth.seck@ifrc.org

For Performance and Accountability (planning, monitoring, evaluation and reporting enquiries)

- **In IFRC Zone:** Robert Ondrusek, PMER Coordinator; Phone: +27 11 303 9700; email: robert.ondrusek@ifrc.org

How we work

All IFRC assistance seeks to adhere to the Code of Conduct for the International Red Cross and Red Crescent Movement and Non-Governmental Organizations (NGOs) in Disaster Relief and the Humanitarian Charter and Minimum Standards in Humanitarian Response (Sphere) in delivering assistance to the most vulnerable.

The IFRC's vision is to inspire, encourage, facilitate and promote at all times all forms of humanitarian activities by National Societies, with a view to preventing and alleviating human suffering, and thereby contributing to the maintenance and promotion of human dignity and peace in the world.



The IFRC's work is guided by Strategy 2020 which puts forward three strategic aims:

1. Save lives, protect livelihoods, and strengthen recovery from disaster and crises.
2. Enable healthy and safe living.
3. Promote social inclusion and a culture of non-violence and peace.

DREF OPERATION

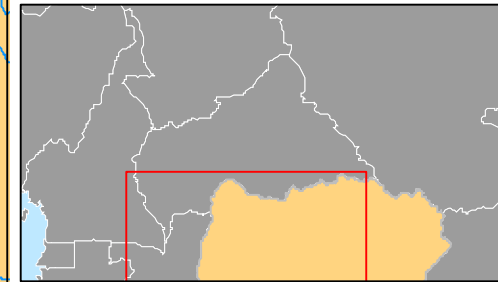
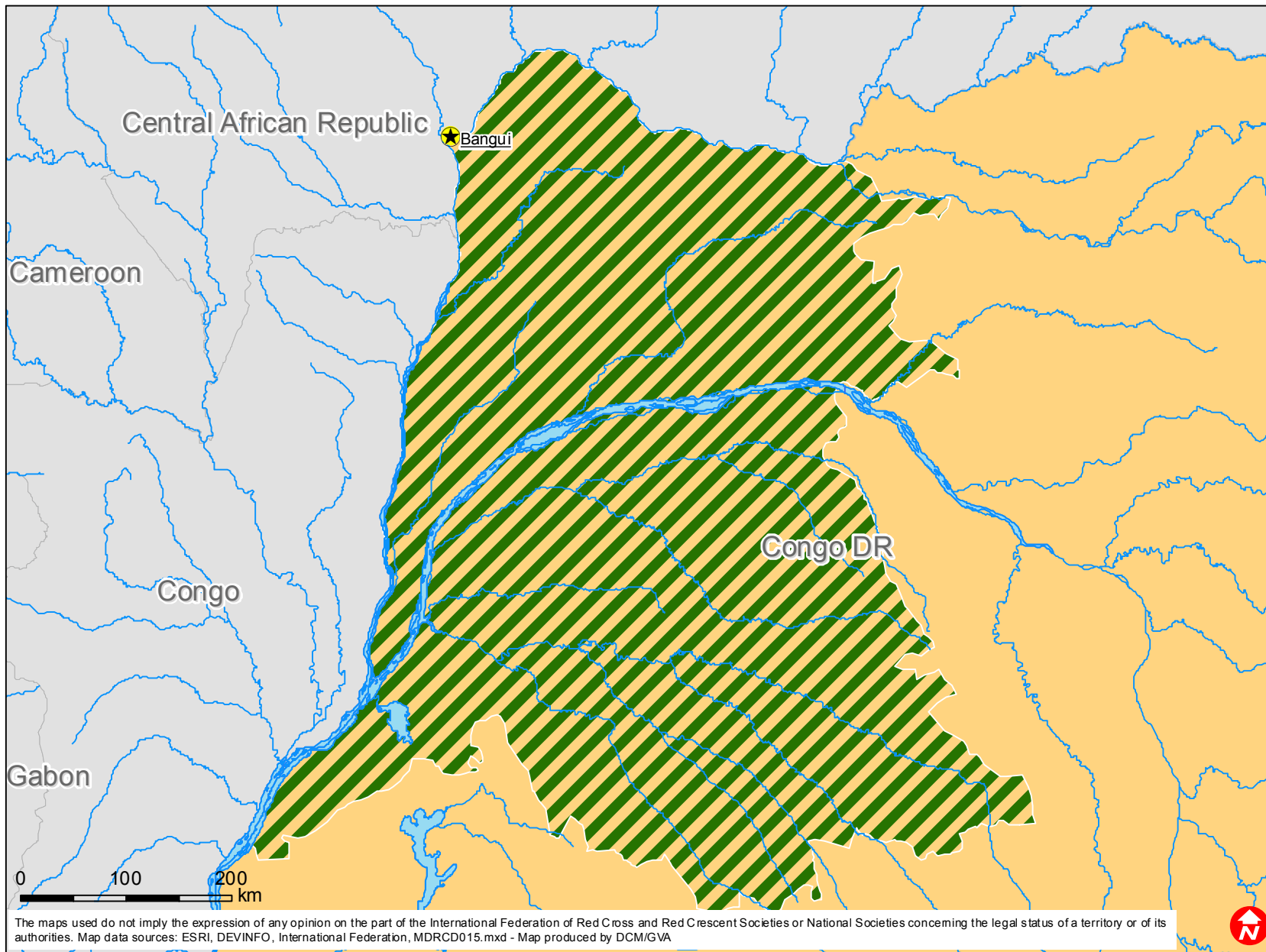
30/08/2014


DRC: Ebola Virus Disease (MDRCD015)

Budget Group	DREF grant budget
Shelter - Relief	0
Shelter - Transitional	0
Construction - Housing	0
Construction - Facilities	0
Construction - Materials	0
Clothing & Textiles	0
Food	0
Seeds & Plants	0
Water, Sanitation & Hygiene	11,750
Medical & First Aid	40,950
Teaching Materials	6,450
Utensils & Tools	6,120
Other Supplies & Services	24,000
Emergency Response Units	0
Cash Disbursements	0
Total RELIEF ITEMS, CONSTRUCTION AND SUPPLIES	89,270
Land & Buildings	0
Vehicles Purchase	12,000
Computer & Telecom Equipment	0
Office/Household Furniture & Equipment	0
Medical Equipment	0
Other Machinery & Equipment	0
Total LAND, VEHICLES AND EQUIPMENT	12,000
Storage, Warehousing	3,500
Distribution & Monitoring	10,000
Transport & Vehicle Costs	3,750
Logistics Services	0
Total LOGISTICS, TRANSPORT AND STORAGE	17,250
International Staff	12,000
National Staff	5,000
National Society Staff	8,200
Volunteers	48,775
Total PERSONNEL	73,975
Consultants	0
Professional Fees	0
Total CONSULTANTS & PROFESSIONAL FEES	0
Workshops & Training	34,955
Total WORKSHOP & TRAINING	34,955
Travel	5,300
Information & Public Relations	1,800
Office Costs	600
Communications	4,100
Financial Charges	1,500
Other General Expenses	0
Shared Support Services	0
Total GENERAL EXPENDITURES	13,300
Programme and Supplementary Services Recovery	15,649
Total INDIRECT COSTS	15,649
TOTAL BUDGET	256,399



Democratic Republic of Congo: EVD



 Affected Equateur province

