

www.ifrc.org
Saving lives,
changing minds.

Emergency Plan of Action (EPoA)

Bangladesh: Floods

 International Federation
of Red Cross and Red Crescent Societies

DREF operation MDRBD014	GLIDE n° FL-2014-000117-BGD
Date of issue: 6 September 2014	Expected time frame: 2 months
DREF budget: CHF 280,160	Expected end date: 15 October 2014
Operation manager (responsible for this EPoA): Nadia Khalid Tithi Manager – Response and Preparedness for Response IFRC Bangladesh Delegation Phone: +88 017 1635 0890 Email: nadiakhalid.tithi@ifrc.org	Point of contact (name and title): Md. Belal Hossain Director, Disaster Response Bangladesh Red Crescent Society Phone: +88 017 1190 8467 Email: belal.hossain@bdracs.org
Total number of people affected: 3 million	Number of people to be assisted with this DREF: 6,000 families (28,800 people)
Host National Society present (n° of volunteers, staff): 144 volunteers and 13 staff mobilized so far	
Red Cross Red Crescent Movement partners actively involved in the operation: International Federation of Red Cross and Red Crescent Societies	
Other partner organizations actively involved in the operation: Government of Bangladesh, UN Agencies, INGOs	

A. Situation analysis

Description of the disaster

Since the second week of August, heavy rains in the main river basins and upstream catchments of India, along with continuous rainfall in northwest and north-eastern parts of Bangladesh have caused a continuously worsening flooding situation in low-lying districts. Districts in the north-west of the country have been heavily impacted which triggered a Joint Needs Assessment to be carried out in 9 districts by members of the Humanitarian Coordination Task Team (HCTT). Situation reports from the Disaster Management Information Centre (DMIC) and reports from BDRCS' local units as well as other NGOs brought attention to the seriousness of flooding in those districts clustered around the north-west (Lalmonirhat, Kurigram, Nilphamari, Rangpur, Gaibandha, Bogra, Serajganj, Jamalpur, Sherpur).

In the following week, with the continuation of heavy rainfalls and many rivers flowing above danger level, the number of districts hit by flood increased as new areas went under water. Sunamganj, Sylhet and Netrokona in the North-east of the country and, even more recently,



Pictures showing the flood situation in the north-eastern districts
(Photo: BDRCS)

districts in the centre of the country (Munshiganj, Tangail, Faridpur, Manikganj, Rajbari) were affected by the floods. Due to the collapse of embankment on the night of 28 August, 100 more villages (approx. 100,000 families) were inundated. Among these, more than 57,000 families (275,000 people) are displaced, including more than 31,000 families (150,000 people) whose homes have been totally inundated/destroyed. A total of 99 flood evacuation shelters are active in the affected districts, housing some of the displaced population while others have made makeshift shelters along elevated roads and with host families.

DMIC situation report issued on 4 September shows that more than 620,000 families (3 million people) are affected. Among these, more than 66,000 families (315,000 people) are displaced, including close to 34,000 families (160,000 people) whose homes have been totally inundated/destroyed. A total of 99 official flood shelters are active in the affected districts, housing some of the displaced population while others have settled in along elevated roads and with host families. Government reports indicate that 52 people have drowned and more than 300 have been injured as a result of the flooding, in ten districts.

It needs to be mentioned here that districts in the South (Bhola, Patuakhali, Barguna) had experienced floods since July and districts such as Feni and Chittagong had been waterlogged around the same time for several days due to heavy rains.

The draft Joint Needs Assessment (JNA) report shared on 1 September mentions the 2014 floods as ‘the most severe floods the country has faced since the so called mega-flood of 2007’ and reports over two million people being affected by the current flood in the nine districts assessed. In Kurigram alone, 120,000 people were displaced at the time of the assessment. The most prominent needs are reported to be food, followed by water and sanitation and livelihoods.

According to the latest government report, out of 83 water level measurement stations, nine remain above danger level, 16 are at warning level (eight of them in rising trend) and the rest in falling trend or steady. Many of the rivers above danger level and at warning level are around Dhaka city, such as Buriganga, Balu, Turag and Tongi Khal. As the monsoon season extends up to October, there is a risk of a protracted or even worsening situation to the rivers.

Summary of the current response

Overview of Host National Society

BDRCS, along with its branches in the affected districts had been monitoring closely the overall flood situation. Information is being collected on an ongoing basis in response to the changing nature of the flood by the branch offices from the local Red Crescent volunteers and government officials. This information is then shared with BDRCS National Headquarters, the International Federation of Red Cross and Red Crescent Societies (IFRC), ICRC and Partner National Societies (PNSs).

As a first responder, BDRCS’s local units have mobilized their volunteers to provide search and rescue and first aid services to the affected people as the flood situation has been evolving since mid-August.



BDRCS members travelling to remote areas with relief items
(Photo by BDRCS)

BDRCS has taken an active part in the Joint Need Assessment (JNA) in the north-western districts organized by the HCTT. Four members of the National Disaster Response Team (NDRT) had been deployed to Kurigram, Lalmonirhat, Sirajganj and Jamalpur districts to assist in the phase one JNA. BDRCS, along with IFRC, has led the assessment in three sub-districts; while taking part in the assessment with other agencies in 20 sub-districts (under the four identified districts). BDRCS has also provided orientation venue and other facilities at Kurigram and Lalmonirhat districts.

To meet the immediate needs, BDRCS has mobilized resources and allocated BDT 11,000,000 (approx. CHF 116,000) for eleven districts (Kurigram, Nilphamari, Rangpur, Sirajganj, Bogra, Gaibandha, Lalmonirhat, Jamalpur, Sherpur, Bhola and Sunamganj) for distribution of dry and cooked food along with basic NFIs (including fire boxes and candles) to the affected people. Various food distributions have already reached more than 4,400 families.



BDRCS distributing emergency relief goods to flood affected people in Jamalpur (Photo by BDRCS)

In consideration of the acute scarcity of safe drinking water among the affected population in the north-west region, BDRCS has mobilized one Kit 5 Water Treatment Plant to support Kurigram district with supply of fresh drinking water. The unit set-up on 4 September produced 8,000 liters of safe drinking water for distribution during the first day. NDWRT (National Disaster Water and Sanitation Relief Team) members and 2 NDRTS have been deployed for this purpose. Another Kit 5 remains stand by for utilization.

BDRCS, with support from IFRC, has also updated its disaster preparedness stock which consists of items like tarpaulins, tents, plastic rolls, cooking pots and utensils, ORS, water purification tablets, clothes, jerry cans, hygiene kits, and is ready to

dispatch these to the affected areas. The remaining NDRT members are on stand-by for rapid deployment if needed.

This DREF is launched to ensure that immediate humanitarian needs are met in the affected areas. BDRCS keeps monitoring the situation closely and all concerned units are feeding updated data to the National Headquarters. In view of the needs, BDRCS needs to go for a more comprehensive response. These include the need for scaling up the distribution of food and essential non-food items, provision of safe drinking water, emergency shelter for the displaced population, health assistance in hard-to-reach areas. BDRCS is considering the options to access additional resources to meet the needs, including the option of the IFRC launching an Emergency Appeal on the behalf of BDRCS.

Overview of Red Cross Red Crescent Movement in country

The IFRC has had a country delegation presence in Bangladesh for three decades. In the current structural set-up, the country delegation is supported by the IFRC Regional Delegation for South Asia (SARD) in New Delhi for longer-term programmes and disaster preparedness and the Disaster Management Unit (DMU) within the IFRC Asia Pacific Zone (APZ) Office in Kuala Lumpur, particularly in disaster response and operational coordination. The country delegation is well-resourced and has highly experienced staff supporting the BDRCS in operations, longer-term programming, capacity building and organizational development.

Several PNSs have a presence in the country, including American Red Cross, British Red Cross, German Red Cross, the Swedish Red Cross, the Swiss Red Cross and the Turkish Red Crescent. The main focus of the partners is on longer-term programming, including supporting BDRCS in large Disaster Risk Reduction (DRR) programmes. They are also active supporters of BDRCS disaster response and as such, BDRCS is counting on their support for this plan of action.

After a long interruption, ICRC has had a presence in Bangladesh since 2006, opening a delegation in Dhaka in 2011.

IFRC has been supporting BDRCS with the initial mobilization of funds and personnel, as well as in preparing situation reports and providing technical inputs for a coordinated relief operation. Currently, four IFRC staff are in the field, in four of the key districts being targeted with this DREF. IFRC is part of the JNA Core Team for the north-west assessment. IFRC is also participating in different coordination meetings, including HCTT and the Disaster Emergency Response (DER) of Local Consultative Group (LCG). IFRC is coordinating with the Shelter Cluster co-lead UNDP in compiling shelter and non-food item (NFI) contingency stock data to prepare for the upcoming response. IFRC is hosting and chairing the upcoming Shelter Cluster Meeting to be held on the 4th of September to discuss with the cluster members the response strategy in relation to shelter and NFIs. In addition

IFRC is participating actively in the WASH Cluster and Information Management Working Group. IFRC is closely monitoring the situation together with the BDRCS and actively coordinating with all in-country PNSs.

Movement Coordination

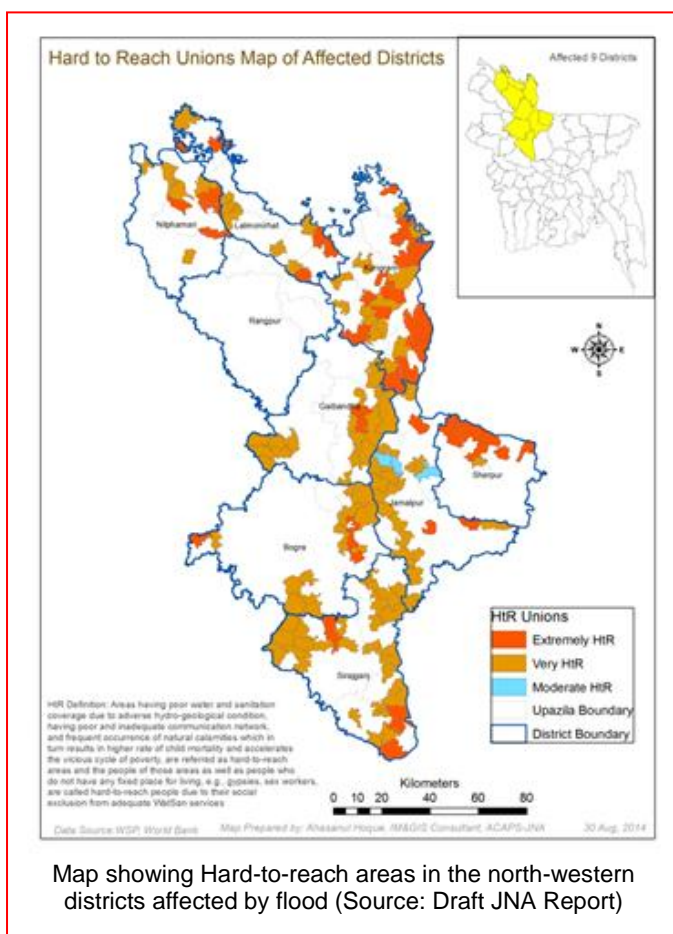
The existing coordination mechanism within the different partner National Societies of the RCRC movement involves a bi-monthly PNS Coordination Meeting. These cover the regular updates from the societies present, the immediate issues to handle and the plan of action forward. There is also the annual Pre-Disaster Meeting held in May 2014 that addresses the broader preparedness issues. Apart from this, coordination meetings between partners take place whenever the need arises. Especially, in-country movement partners extend their support during any emergency situations where IFRC play a coordination role to assist BDRCS for better response. An emergency meeting between the movement partners has taken place regarding the flood response.

Overview of non-RCRC actors in country

HCTT has conducted a phase one JNA in nine north western districts (Kurigram, Gaibandha, Lalmonirhat, Sirajganj, Bogra, Rangpur, Jamalpur, Nilphamari and Sherpur). The draft report was shared with relevant stakeholders on September 1st, while the final version is due to be out on the 4th of September.

The Government of Bangladesh has allocated for immediate assistance to all affected districts more than 7,200 MTs of rice and cash (approx. CHF 170,000). The United Nation's World Food Programme (WFP) has distributed close to 80 MTs of high energy biscuits. Various UN agencies and INGO/NGOs have also started responding to the immediate needs of the affected population with food packages, WASH activities and cash grants.

Needs analysis, beneficiary selection, risk assessment and scenario planning



According to the draft JNA report, food, access to safe water, sanitation and livelihoods are reported as the main priority sectors across the districts.

Food has been reported as the priority need in most districts. Food stocks and household items were damaged by flood waters, leaving some families fully dependent on relief support. Many have been surviving on the little dry food that they were able to take with them like puffed rice, flattened rice, etc. The ability to cook food and boil water is also an issue. Short term food security appears more imminent a problem; however there will still be a significant impact on long term food security due to the impact on agriculture crop and livelihoods. Agricultural land is still under water and no clear indication is available now in the time needed to the water to recede. Food will continue to be a major issue in the longer term if damaged crops are not replaced with newly planted seeds.

A large number of hand tube-wells have been contaminated by flood waters, forcing the affected population to seek alternative water sources. Shortage of safe drinking water is a pressing concern, and so is the lack of latrines in the spontaneous settlements. Many latrines have been washed away and inadequate sanitation facilities have caused many to openly defecate, hence contaminating pond waters and increasing the risks of spread of water-borne illness. There have been increased cases of diarrhea,

skin and eye infections and pneumonia as was reported in DMIC situation report dated 4 September.

Shelter, although not mentioned as the biggest priority at the moment, is a concern for most of the assessed unions. Government figures report a total of 18,884 houses being fully damaged and 54,208 houses being partially damaged in the nine districts covered by the JNA. Overall, close to 34,000 houses are reported destroyed and close to 200,000 damaged.

Risk Assessment

With the monsoon season continuing for another month, the risk of more heavy rains and additional flooding needs to be taken into account in the operation. At this point in time, water levels are receding with no significant rain forecasts for the coming days. However, more flooding in the coming weeks cannot be excluded.

As a significant number of the affected areas are located in remote areas, logistical arrangements remain a key challenge and major risk. Assessment teams and responders have reported several challenges to gain access in the areas affected due to roads being blocked and continuous rain.

Lack of coordination between different humanitarian actors can result in duplication of efforts. This risk can be mitigated through the participation of humanitarian coordination meeting. Besides, regular management meeting between IFRC and BDRCS is also effective to ensure an efficient and timely response.

B. Operational strategy and plan

Overall objective

The overall objective of the operation is to ensure that immediate humanitarian needs of 6,000 families affected by floods in 12 districts of Bangladesh are met through the provision of emergency food and non-food items, shelter, WASH and health support.

Proposed strategy

The BDRCS, utilising its staff and volunteers across the affected areas, has been actively engaged in response immediately after onset of disaster and they are in the affected areas rendering relief services. The current operation is mainly focused on assessment and relief materials distribution for affected population, especially the displaced population.

BDRCS has taken a phased approach to the response operation to meet immediate needs, targeting the districts of Kurigram, Jamalpur, Bogra, Shirajganj, Gaibandha, Lalmonirhat, Rangpur, Sherpur, Munshiganj, Rajbari, Faridpur and Tangail. Health, part of the food distributions and the provision of water will focus on Kurigram, Jamalpur, Bogra and Shirajganj only, based on the result from the JNA.

Phase	Timeframe	Activity	Area	No. of beneficiaries reached
1	0-2 weeks	Distribution of dry food as immediate food assistance	11 districts	4,470 HHs
		Participation in Joint Needs Assessment	4 districts	
2	1-3 weeks	Distribution of locally procured food items	4 districts	1,000 HHs
		Distribution of emergency shelter material, non-food relief items and hygiene parcels	12 districts	2,400 HH
		Providing safe drinking water through mobilizing and running Kit 5 Water treatment plant for 7 days coupled with hygiene promotion	4 districts	1,600 HHs per day per location
		Providing emergency health assistance through mobilizing 8 medical teams for 10 days	4 districts	4,000 patients
		Distribution of ORS	12 district	TBD
3	3-6 weeks	Distribution of cash grants for purchasing food items as access to markets improve	12 districts	2,400 HHs

BDRCS is utilizing items from its existing preparedness stocks and through quick local procurement at district and union level. This DREF will support all phases of the operation through replenishment of preparedness stocks and assessment costs (phase 1) and rapid procurement for distribution, cash support and roll-out of WASH and health activities.

Food Package for 1 family for 1 month

Item	Unit	Quantity
Rice	kg	20
Pulse	kg	3
Oil	ltr	2
Salt	kg	1
Sugar	kg	1
Shuji (baby food)	kg	1

NFI Package for 1 family

Item	Unit	Quantity
Tarpaulin	pcs	1
Nylon Rope	kg	0.5
Candle	pcs	12
Fire box	pcs	12
Bag for holding relief items	pcs	1

Hygiene Parcel

Item	Unit	Quantity
Laundry Soap	pcs	1
Bathing Soap	pcs	1
Washing Powder (0.5 kg)	pcs	1
Tooth Powder (250 gm)	pcs	1
Comb	pcs	1
Sanitary Napkin	pcs	1

Selection of beneficiaries

The targeted population is primarily those displaced by, and secondarily those affected by the floods.

The prioritized beneficiaries include the elderly, women and children as the most vulnerable categories during disasters. Further assessments will identify others who are vulnerable in this particular context.

Operational support services

Human resources

BDRCS will use its existing staff and volunteers for the response operation. BDRCS has already deployed several NDRT and NDWRT members for the operation. BDRCS has activated its contingency plan, meaning that all staff can be pulled into the operation when need arises.

IFRC will also use existing staff for the operation and has already deployed several staff to different field locations.

This DREF covers travel, accommodation and per-diem costs related to the staff and volunteers. The DREF also covers insurance for the volunteers used in the operation through the IFRC global volunteer accident insurance

scheme. The EOC's on both district and National Headquarters level are being strengthened for the management and coordination of the operations and related costs are also included in this DREF.

Logistics and supply chain

The tarpaulins and shelter kits included in this plan will initially be sourced from existing in-country disaster preparedness stocks that are to be replenished through the IFRC Zone Logistics Unit (ZLU). Two Kit 5 Water treatment plants are in country that will be utilized for the operation, as well as the mobile latrines. The household NFIs, food items and hygiene parcels are being procured locally by BDRCS on district and union level. All procurement related to this DREF will be following IFRC standards procurement procedures.

BDRCS will utilize existing warehouse and transport capacities to support the operation. BDRCS has a central warehouse in Dhaka and initially the replenishment will be directed there. Decisions around the logistics and timeframes for replenishing pre-positioned stocks used in the zones and branches will be determined once the procurement part of the DREF has been implemented and delivery times are confirmed. Transport and distribution costs within the country will be covered from this DREF budget.

IFRC will provide logistics support according to its standard procedures to timely and efficiently source, procure and deliver equipment and other materials. IFRC's zone logistics unit (ZLU) in Kuala Lumpur will provide the technical support to the Bangladesh delegation.

Communications

BDRCS and IFRC Communication Department is the focal department for communication and media relations. Information of disaster responses are regularly being updated on social media. Field visits are already being conducted to capture materials for web story and best practices reflecting the actual needs and operation in the field in the coming days.

Beneficiary communication and close coordination with the affected population will be taken into consideration during response operation and the BDRCS will incorporate feedback during the course of the operation.

Visibility materials like caps, t-shirts, vests and key message news bulletins will be promoted. Best practices will be captured and all efforts made to record case studies as the operation progresses.

Security

Accessibility is an issue in many of the affected unions due to damaged infrastructure. Despite having problems in getting access to the affected regions because of inundation and absence of transportation services, the BDRCS volunteers are utilizing locally available facilities, including boats in most of the places, to carry out assessment and render immediate response services in affected areas. As the monsoon season continues, adverse weather conditions may affect response operation.

IFRC and BDRCS will constantly monitor the weather situation and take precautions on time. Existing security rules and regulations will be followed in the operation.

Planning, monitoring, evaluation, & reporting (PMER)

BDRCS will be responsible for the day-to-day monitoring of the operation - primarily at the branch/unit level, but supervised and supported closely by its headquarters and the IFRC. BDRCS and IFRC monitoring teams, including the National Disaster Response Team, will visit the operation sites. Regular internal reporting and logbook-keeping by the field officers will help to gather information during day-to-day operational issues. BDRCS PMER unit will be involved in the PMER activities, especially in the planning and reporting of the operation at headquarters.

IFRC, through its country office in Dhaka and the Disaster Management Unit in Kuala Lumpur, will provide technical support to BDRCS. The affected districts will be regularly visited by joint IFRC and BDRCS monitoring teams on a needs basis. This will help identify and, where possible and necessary, resolve any problems.

A final report on this DREF-supported operation will be made available three months after the end of the operation. An after action review will be carried out at the end of this operation, followed by a lesson learned workshop to be conducted for those involved in the response operation.

Administration and Finance

The operation will rely on existing financial management and administration systems in BDRCS and IFRC. Provisions have been made for communication costs related to the operation as well as financial charges and general expenses (refer to attached budget).

Contact information

For further information specifically related to this operation please contact:

- **Bangladesh Red Crescent Society:**
 - BMM Mozharul Huq, ndc, Secretary General; phone: +88 02 935 2226; email: secretarygeneral@bdracs.org
 - Md. Belal Hossain, Director, Disaster Response; phone: +88 017 1190 8467; email: belal.hossain@bdracs.org
- **IFRC Bangladesh Delegation:**
 - Tsehayou Seyoum, Head of Delegation; phone: +88 017 1152 1615; email: tsehayou.seyoum@ifrc.org
 - Nadia Khalid Tithi, Manager - Response and Preparedness for Response; phone: +8801716350890; email: nadiakhalid.tithi@ifrc.org
- **IFRC Regional Delegation:**
 - Simon Missiri, Head of Regional Office, phone: +91 11 26154021 to 24; fax: +91 11 26154025; email: simon.missiri@ifrc.org
- **IFRC Asia Pacific Zone Office:**
 - Andreas Weissenberg, Operations Coordinator; office phone: +603 907 5729; email: andreas.weissenberg@ifrc.org.
- **In Geneva:**
 - Christine South, Operations Support; office: +41 22 730 4529; email: christine.south@ifrc.org
- **IFRC AP Zone Logistics Unit (ZLU):**
 - Florent Chane, Zone Logistics Coordinator; mobile: +60 12 298 9752; email : florent.chane@ifrc.org

For Resource Mobilization and Pledges:

- **In Asia Pacific Zone Office:**
 - Emilia Koski, Relationship Manager; mobile:+60 12 230 7548; email: emilia.koski@ifrc.org

For Performance and Accountability (planning, monitoring, evaluation and reporting enquiries):

- **In Asia Pacific Zone Office:**
 - Peter Ophoff, Head of PMER; office: +603 9207 5507; email: peter.ophoff@ifrc.org

How we work

All IFRC assistance seeks to adhere to the **Code of Conduct** for the International Red Cross and Red Crescent Movement and Non-Governmental Organizations (NGOs) in Disaster Relief and the **Humanitarian Charter and Minimum Standards in Humanitarian Response (Sphere)** in delivering assistance to the most vulnerable. The IFRC's vision is to inspire, **encourage, facilitate and promote at all times all forms of humanitarian activities** by National Societies, with a view to **preventing and alleviating human suffering**, and thereby contributing to the maintenance and promotion of human dignity and peace in the world.

The IFRC's work is guided by Strategy 2020 which puts forward three strategic aims:



Save lives.
protect livelihoods,
and strengthen recovery
from disaster and crises.



Enable **healthy**
and **safe** living.



Promote **social inclusion**
and a culture of
non-violence and **peace**.

DREF OPERATION

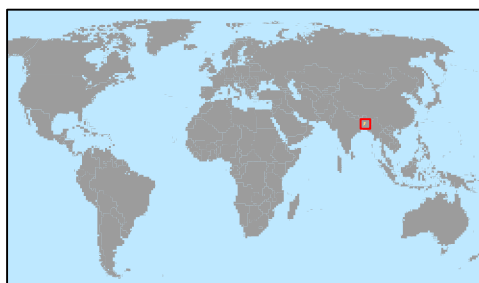
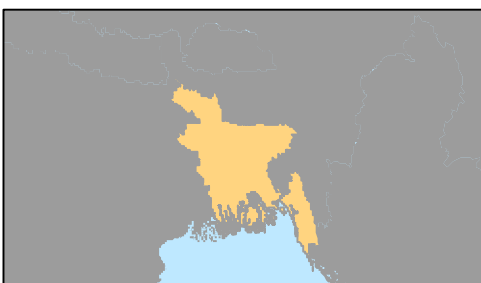
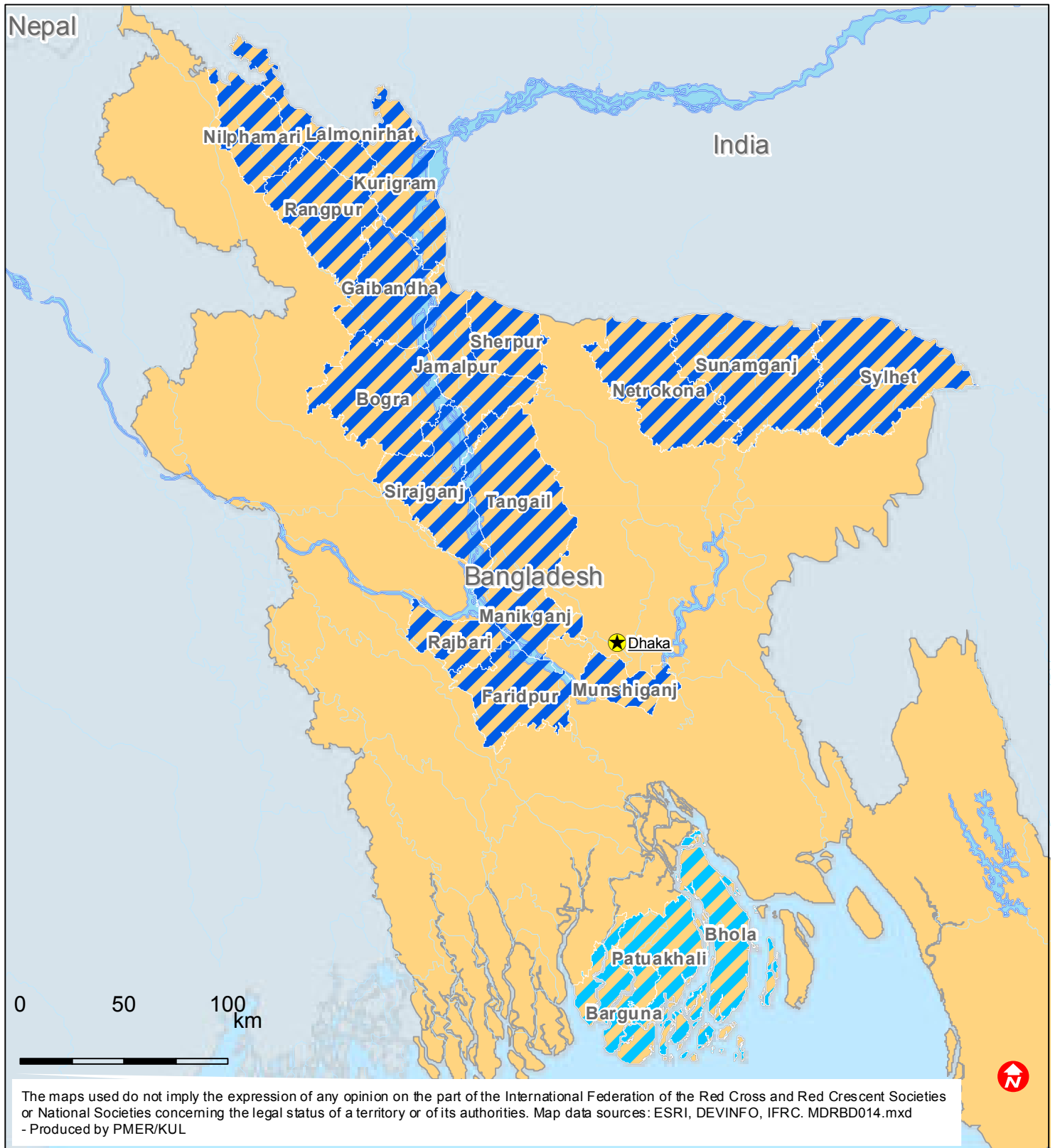
06/09/2014

MDRBD014 Bangladesh: Floods

Budget Group	DREF Grant Budget CHF
Shelter - Relief	46,500
Food	31,250
Water, Sanitation & Hygiene	30,800
Medical & First Aid	7,100
Other Supplies & Services	2,820
Cash Disbursements	90,000
Total RELIEF ITEMS, CONSTRUCTION AND SUPPLIES	208,470
Distribution & Monitoring	11,850
Transport & Vehicle Costs	1,250
Total LOGISTICS, TRANSPORT AND STORAGE	13,100
Volunteers	7,391
Total PERSONNEL	7,391
Workshops & Training	7,438
Total WORKSHOP & TRAINING	7,438
Travel	18,225
Information & Public Relations	3,750
Office Costs	4,375
Communications	313
Total GENERAL EXPENDITURES	26,663
Programme and Supplementary Services Recovery	17,099
Total INDIRECT COSTS	17,099
TOTAL BUDGET	280,160



Bangladesh: Floods



- Affected districts
- Districted flooded since July 2014
- Rivers