



**CENTRAL AFRICAN REPUBLIC**  
**Federation-wide National Society Response Plan**

**MDRS1001 Sudan and impacted countries crisis**  
**Emergency Appeal**

**Emergency appeal No: MDRS1001**

**Timeframe of this response plan: 30/05/2023 - 31/12/2024**

**Number of people to be assisted: 10,000**

**Federation-wide funding requirement: CHF 500,000**

**IFRC Secretariat funding requirement: CHF 500,000**

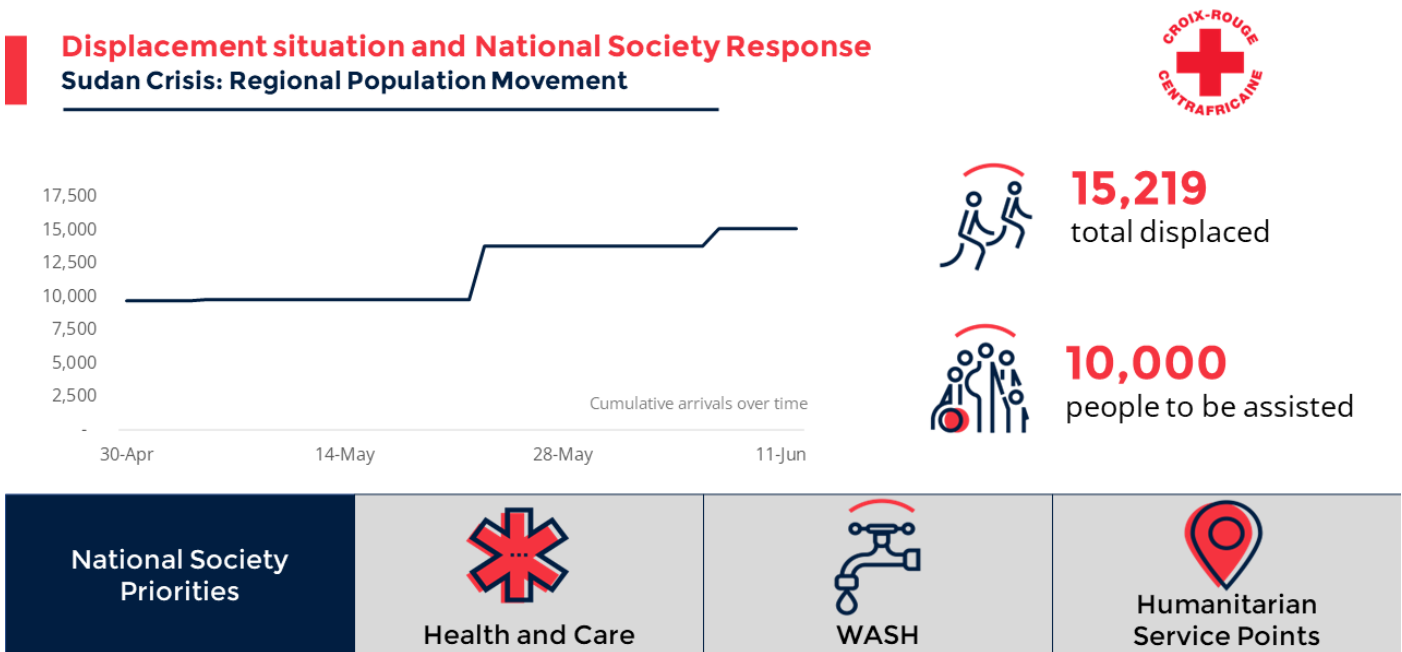
# EXECUTIVE SUMMARY

This operation aims to support the provision of immediate humanitarian services to displaced populations from Sudan, through first aid, reception, access to water and humanitarian reception and support services to arrivals via Red Cross points and in the Vakaga camps for displaced people, particularly Am-Dafock. This operation will also strengthen the response capacity of the border posts in Sudan to deal with different scenarios.

Given the situation, the Central African Red Cross Society (CARCS) will provide assistance in line with the above-mentioned context, including actions contributing to the immediate humanitarian assistance of populations as soon as they enter Am Dafock, the mobilization and preparation of possible service areas in Bria and Birao and support for households to complement actions already undertaken by partners on the ground.

The CARCS approach to responding to this crisis will also be coordinated with and complementary to actions undertaken and underway by partners. The intervention will focus on:

1. Emergency humanitarian assistance at key entry and transit points, through the establishment of Humanitarian Service Points (HSPs).
2. Assistance to relocation sites : disease prevention, camp sanitation, hygiene promotion and protection



## NEEDS ASSESSMENT AND TARGETING

### Humanitarian impact of the crisis and resulting needs

Since 15 April 2023, armed fighting broke out in several provinces of Sudan, causing a massive displacement of Sudanese populations from the most severe points of conflict to relatively stable areas either inside the country or in the border areas. The expansion of the conflicts to North, South and Central Darfur provinces as well as to Kordofan and other parts of Sudan has pushed thousands of Sudanese and residents of neighbouring countries to seek refuge in the Central African Republic.

The arriving populations are in distress, sometimes injured, tired and unfamiliar with the host area. Displaced people have urgent health, material and nutritional needs, as well as information and orientation needs. Rapid

assessments conducted by the local Birao CARCS committee have identified urgent needs in the areas of food, emergency shelter, and essential household items (cooking utensils, bedding, documentation, etc.).

Access to clean water is another priority need. The number of water points is not known at present, but this area was already limited in terms of drinking water supply, so water is supplied from rivers, which requires treatment. Limitations were also observed in terms of access to household hygiene and living conditions and sanitation, which are expected to deteriorate further with more waves of arrivals and the rainy season. The risk of epidemic is high under these conditions, affecting households and especially already vulnerable groups such as children, pregnant and lactating women, and others.

The conflict and the journey conditions have a mental, physical, and psychological impact on displaced people from Sudan. Hence there are urgent needs for health care, first aid and psycho-social support, especially for people in vulnerable situations including women, children, older people, and people with special needs.

### **Prioritization: Needs and specific groups that National Societies in country are responding to**

Through this response, assistance and protection will be provided to all those in need according to our principled humanitarian approach. Priority will be given to those in need of medical assistance, women, children and people with disability.

## **CAPACITIES AND RESPONSE**

### **National Society capacity**

<b>National Society role in the national response</b>	The Central African Red Cross has experience in managing population movements in Central Africa. With the support of the local authorities, the UNHCR, the IFRC and the movement's partners present in CAR, the National Society is already responding to the needs of displaced people from Sudan. CARCS has activated and mobilized its branches, especially in Birao with more than 250 volunteers.
<b>Key areas of scale-up and strength</b>	The CARCS has a nationwide presence through its 80 local branches, and a high level of acceptance by communities. In addition, strong coordination mechanisms are established and CARCS is part of all cluster and working groups including in WASH, Shelter, Livelihoods, Food Security and Health.

## National Society partners

The International Committee of the Red Cross (ICRC), the Netherlands Red Cross (NLRC) and the French Red Cross (FRC) have representations in CAR. The International Federation of Red Cross and Red Crescent Societies (IFRC) provides technical support from its Cluster Office based in Bangui. Overall, all components of the Red Cross Movement in CAR are working hard to pool their efforts, resources and expertise to make a significant contribution to the emergency response proposed by the CARCS. Coordination meetings are being held with the Secretary General, at which information on the refugee crisis is being shared and guidelines are being drawn up to support the CARCS 's work on the ground.

Name of Partner	Health & Care	Integrated Assistance	Protection & Prevention	NS Capacity Building	Details
IFRC	<input checked="" type="checkbox"/>	<input checked="" type="checkbox"/>	<input checked="" type="checkbox"/>	<input type="checkbox"/>	<i>The IFRC is currently being asked to support the National Society's strategic and programmatic thinking on the response to the Sudanese refugee crisis. The IFRC is also supporting the National Society in mobilising funds through the DREF and the Emergency Appeal. The IFRC could support the CARCS in developing expertise in the field of mobile money transfers (especially for the payment of volunteers involved in the operation, if the situation allows).</i>
French Red Cross	<input checked="" type="checkbox"/>	<input type="checkbox"/>	<input type="checkbox"/>	<input type="checkbox"/>	<i>The French Red Cross has had an office in CAR since 2003, and has considerable expertise in community health and epidemic prevention and control, including Covid-19.</i>
Netherlands Red Cross	<input type="checkbox"/>	<input type="checkbox"/>	<input checked="" type="checkbox"/>	<input checked="" type="checkbox"/>	<i>The Netherlands Red Cross has been established in CAR since 2017. It supports the National Society in disaster response preparedness, youth and peacebuilding.</i>
ICRC	<input type="checkbox"/>	<input checked="" type="checkbox"/>	<input type="checkbox"/>	<input type="checkbox"/>	<i>The ICRC, which has been present in CAR since the end of 1997, brings all its expertise to the National Society and can contribute in this case to the emergency response to the Sudanese refugee crisis, as it has done in previous crises. The ICRC supported the construction of 10 emergency latrines in Am Dafock.</i>

## OPERATIONAL STRATEGY

### Scenario Planning

Population affected by the conflict inside Sudan is expected to continue to flee and number of refugees and returnees arriving to Central African Republic border are projected to grow. As per UNHCR projections, 20,000 refugees and returnees are expected to enter Central African Republic by October 2023. As a resolution to the conflict in Sudan is not on the horizon, new arrivals are expected to continue over 2023. Additionally, seasonal floods, affecting the same states that are receiving highest number of refugees and returnees, are likely to further worsen the already challenging context and humanitarian situation. The Response Plan outlines key activities that will be implemented to support refugees and returnees. The situation inside Sudan and its effects on South Sudan,

including trends in projected arrivals and impacts on economic situation and inter-community relations will be continuously monitored and plans and activities will be adjusted accordingly.

## People to be assisted

CARCS aims to provide assistance and protection to 13,700 of the most vulnerable displaced people including 5,000 displaced people from Sudan, 1,200 returnees and 7,500 members of host community.

### Profiles, sex and age breakdown of people targeted:


Sex-age group	Total
Males Over 18 years of age	60
Males Under 18 years old	630
Females Over 18 years old	1,100
Females Under 18 years of age	11,910
<b>Total number of people to be assisted</b>	<b>13,700</b>

## ONGOING AND PLANNED OPERATIONS

This operation aims to support the provision of immediate humanitarian services to the displaced population coming from Sudan through first aid, reception, access to water and humanitarian reception and support services to the arrivals via the Red Cross points and in the IDP settlements in Vakaga, especially Am Dafock. This operation will therefore also ensure the strengthening of the response capacity of the branches of Birao, Am Dafock and Bria.


## HEALTH & CARE INCLUDING WATER, SANITATION AND HYGIENE (WASH)

 <b>Health and care</b>	Overall target: <b>10,000</b>	
	Female > 18:	Female < 18:
	Male > 18:	Male < 18:
<b>Objective:</b>	<b>Most vulnerable displaced people are provided with high-quality health and care services including MHPSS.</b>	
<b>Priority Actions:</b>	<b>Activities:</b>	
<b>First aid</b>	<ul style="list-style-type: none"> <li>• First aid provision to newly arrived displaced people.</li> <li>• Procurement and pre-positioning of first aid kits</li> <li>• Training of 300 volunteers in first aid</li> </ul>	
<b>Primary healthcare and referrals</b>	<ul style="list-style-type: none"> <li>• Referrals to healthcare public services</li> <li>• Training of 300 volunteers in community-based disease surveillance and epidemic prevention.</li> <li>• Psychological first aid.</li> <li>• Awareness-raising and health promotion, with a focus on water-borne diseases and malaria</li> </ul>	

<b>Mental health and psychosocial support (MHPSS)</b>	<ul style="list-style-type: none"> <li>• Training of 300 volunteers in first aid</li> </ul>	
 <b>WASH</b>	Overall target: <b>10,000</b>	
	Female > 18:	Female < 18:
	Male > 18:	Male < 18:
<b>Objective:</b>	<b>Most vulnerable displaced people are provided with high-quality health and care services including MHPSS.</b>	
<b>Priority Actions:</b>	<b>Activities:</b>	
<b>WASH assessments and trainings</b>	<ul style="list-style-type: none"> <li>• Assessment of the water, sanitation and hygiene situation in refugee sites and host communities</li> <li>• Training 300 volunteers in water, hygiene and sanitation in camps and settings</li> </ul>	
<b>Access to clean and safe water</b>	<ul style="list-style-type: none"> <li>• Purchase and distribution of water purification products for 1,500 households</li> <li>• Awareness-raising among refugees, returnees and host communities about the safe storage and use of water, including demonstrations of mechanical water purification.</li> </ul>	
<b>Hygiene promotion</b>	<ul style="list-style-type: none"> <li>• Awareness-raising and hygiene promotion sessions among refugees, returnees, and host communities</li> <li>• Preparation and distribution of IEC materials related to hygiene good practices.</li> <li>• Assess progress made in hygiene practices and evaluate results</li> </ul>	
<b>Sanitation</b>	<ul style="list-style-type: none"> <li>• Purchase of sanitation kits and tools to support environmental health and sanitation work.</li> </ul>	

## INTEGRATED ASSISTANCE



(SHELTER, HOUSING AND SETTLEMENTS, MULTI-PURPOSE CASH)

 <b>Shelter, Housing and Settlements</b>	Overall target: <b>10,000</b>	
	Female > 18:	Female < 18:
	Male > 18:	Male < 18:
<b>Objective:</b>	<b>Communities in crisis-affected areas restore and strengthen their safety, well-being and longer-term recovery through shelter and settlement solutions.</b>	
<b>Priority Actions:</b>	<b>Activities:</b>	

<b>Provision of essential household items</b>	<ul style="list-style-type: none"> <li>• Purchase and distribution of essential household items to displaced people</li> </ul>
<b>Emergency shelter</b>	<ul style="list-style-type: none"> <li>• Purchase of tarpaulins for the construction of 15 emergency community shelters and 2 Humanitarian Service Points for the provision of emergency services to displaced persons</li> </ul>

## PROTECTION AND PREVENTION

### (PROTECTION, GENDER, AND INCLUSION (PGI), COMMUNITY ENGAGEMENT AND ACCOUNTABILITY (CEA), MIGRATION)

 <b>Protection, Gender and Inclusion</b>	Overall target: <b>10,000</b>	
	Female > 18:	Female < 18:
	Male > 18:	Male < 18:
<b>Objective:</b>	<b>The different people impacted, displaced by or fleeing the crisis are safe from harm including violence, abuse and exploitation, discrimination and exclusion, and their needs and rights are met.</b>	
<b>Priority Actions:</b>	<b>Activities:</b>	
	<ul style="list-style-type: none"> <li>• Ensure that all relevant staff and volunteers are informed about PGI and sign the Code of conduct.</li> <li>• Ensuring PGI Minimum standards in emergencies to be embedded in all sectors to ensure dignity, access, participation, and safety of communities.</li> <li>• Engage other protection actors to map and establish safe referral pathways for child protection issues, sexual and gender-based violence, protection challenges, gender and inclusion or sensitive reporting systems.</li> <li>• Among the supervisors, two PGI focal points will ensure regular monitoring and reporting on protection activities, feedback and challenges. Establishment of a clear system for handling sensitive complaints in the feedback mechanism.</li> <li>• Printing of Protection, PSEA and child protection messages</li> <li>• Deployment of volunteers to disseminate protection and peace promotion messages.</li> <li>• An inclusive approach will also be developed with translation of messages into languages desired by communities.</li> </ul>	
 <b>Community Engagement and Accountability</b>	Overall target: 10,000	
	Female > 18:	Female < 18:
	Male > 18:	Male < 18:
<b>Objective:</b>	<b>The diverse needs, priorities and preferences of the affected communities guide the response ensuring a people-centred approach through meaningful community participation.</b>	

<b>Priority Actions:</b>	<b>Activities:</b>	
	<ul style="list-style-type: none"> <li>• Inclusion of the host community and displaced people in needs assessments and response planning.</li> <li>• Community meetings and advocacy with community leaders, political and administrative authorities and other humanitarian actors present.</li> <li>• Training volunteers and community leaders on the CEA approach in emergency situations.</li> <li>• Setting up feedback, reporting and community feedback management mechanism with a clear system for handling sensitive complaints.</li> <li>• Production and dissemination of information and awareness-raising materials</li> <li>• Participation in CEA forums in the field and at national level</li> </ul>	
 <b>Migration and Displacement</b>	Overall target: 10,000	
	Female > 18:	Female < 18:
	Male > 18:	Male < 18:
<b>Objective:</b>	<b>Specific vulnerabilities of displaced populations and people on the move are analysed and their needs and rights are met with dedicated humanitarian assistance, protection and humanitarian diplomacy interventions, in coordination with relevant stakeholders.</b>	
<b>Priority Actions:</b>	<b>Activities:</b>	
Humanitarian Service Points (HSPs) providing services displaced people and returnees	<ul style="list-style-type: none"> <li>• Set-up 2 Humanitarian Service Points at the border areas (Birao, Am Dafock, Bria) to provide the following services: welcome and information, safe referrals, distribution of food and non-food items, MHPSS, first aid and awareness-raising on rights.</li> <li>• Capacity strengthening in Humanitarian Service Points management</li> </ul>	
Analysis and advocacy	<ul style="list-style-type: none"> <li>• Support set-up of multi-sectorial needs assessments and ongoing analysis of the situation and evolving needs</li> </ul>	

## APPROCHES

### NATIONAL SOCIETY STRENGTHENING, COORDINATION AND PARTNERSHIPS



### National Society Strengthening



<b>Objective:</b>	<b>National Societies respond effectively to the wide spectrum of evolving crises and their auxiliary role in disaster risk management is well defined and recognized.</b>
<b>Priority Actions:</b>	<b>Activities:</b>
	<ul style="list-style-type: none"> <li>• Trainings/briefings of Birao, Bria and Am Dafock branches in safer access, security and on intervention context.</li> <li>• Mobilization and training of 200 CARCS volunteers and 10 supervisors in the refugee sites will be mobilized and trained to build the National Society's capacity in community monitoring and social mobilization.</li> <li>• Establishment of a crisis management committee in Am Dafock</li> <li>• Support to the branch for data collection, assessments and the establishment of a regular communication and information management system.</li> <li>• Equipping branches with first aid kits, other relevant equipment, and provision of logistical support</li> <li>• Protection and equipment for volunteers: purchase of protective and visibility equipment</li> <li>• Trainings of NDRTs and volunteers on shelter, health and other sectors will be briefed and deployed to the field.</li> <li>• Communication support (Thuraya charging)</li> </ul>



## IFRC Secretariat Services

<b>Objective:</b>	<b>The IFRC is working as one organization, delivering what it promises to National Societies and volunteers, and leveraging the strength of the communities with which they work as effectively and efficiently as possible.</b>
<b>Priority Actions:</b>	<b>Activities:</b>
<b>Operational support</b>	<ul style="list-style-type: none"> <li>• Coordination and monitoring of the implementation of activities.</li> <li>• Coordination meetings with the movement's other partners</li> <li>• Support for needs assessment and local market research</li> </ul>
<b>Planning, Monitoring, Evaluation, &amp; Reporting (PMER)</b>	<ul style="list-style-type: none"> <li>• Support for evaluation missions and reporting</li> <li>• Lessons learned workshop and post-distribution survey</li> </ul>
<b>Logistics</b>	<ul style="list-style-type: none"> <li>• Support in drawing up the procurement plan in accordance with logistics procedures.</li> <li>• Support for the deployment of teams and equipment in the field</li> </ul>
<b>Security</b>	<ul style="list-style-type: none"> <li>• Security assessments, validation of deployments and briefing of teams on security rules before leaving for the field.</li> </ul>

- Regular communication with teams in the field
- Provision of visibilities and satellite telephone



## Coordination and partnerships

<b>Objective:</b>	<b>Technical and operational complementarity is enhanced through cooperation among IFRC membership.</b>
<b>Priority Actions:</b>	<b>Activities:</b>
<b>Internal coordination</b>	<ul style="list-style-type: none"> <li>• Strengthen Movement coordination and cooperation and ensure regular updates and information sharing between Movement partners to avoid duplication and maximize efficiency and the use of resources.</li> </ul>
<b>External coordination</b>	<ul style="list-style-type: none"> <li>• Participation in national coordination meetings with authorities and other stakeholders (UN agencies, NGOs)</li> </ul>

## Quality and accountability

The following key indicators will be tracked:

<b>Federation-wide indicators</b>
# of people reached with first aid
# of people reached with primary health services and/or referral to public health institutions
# of people reached by National Society mental health and psychosocial support services
# of people trained in first aid
# of people trained in Mental Health and Psychosocial Support (including Psychological First Aid and other MHPSS related trainings)
# of people reached with hygiene supplies
# of people reached by hygiene promotion activities
# of people reached with safe and clean water
# of construction/rehabilitation of sanitation facilities_
# of people reached with food (in-kind)
# of people reached with relief assistance for basic needs (non-food)
# of people assisted with emergency shelter
# of people reached with rental assistance
# of people reached with cash/vouchers or in-kind assistance for repairs (material and/or labour) for shelter that is safe and adequately enables essential household and livelihoods activities to be undertaken with dignity
# of people reached with conditional and/or unconditional cash and voucher assistance
Amount of cash distributed
# of children welcomed in child-friendly spaces_
# of people reached with PGI activities
# of staff, volunteers and associated personnel trained on Prevention and Protection of sexual exploitation and abuse and child safeguarding
# Needs assessments conducted_
# of Humanitarian Service Points that provided services to refugees/displaced people
# of people reached at RCRC Humanitarian Service Points_
# of people supported in official procedures
# of established feedback mechanisms

# of community feedback comments collected
% of complaints or feedback about the RCRC operation which receive a response through established community communication_
# of operational decisions or changes made based on community feedback
# of staff, volunteers and leadership trained on community engagement and accountability (disaggregated by staff / volunteers / sex)
# of volunteers involved in the operation
# of volunteers involved in response who are insured
# of branches responding_
# of branches which started branch development as part of the current response activities (including soft and infrastructure investments)
National Society is part of their national government's Disaster/Displacement Response Mechanism
# Movement coordination meetings organized, and updates are provided to the Movement partners
# of external Stakeholders and Clusters coordination meetings organized
# of distributed goods (in metric tons and value)
# of procured goods (in metric tons and value)

## ANNEX 1: NATIONAL SOCIETY RESPONSE PLAN – FEDERATION-WIDE FUNDING REQUIREMENT THROUGH VARIOUS CHANNELS

<u>FUNDING REQUIREMENTS</u>	Total	CAR RC Fundraising	Through IFRC	PNS1	PNS2	PNS3	PNS5
<b>Planned Operations</b>	<b>0</b>		<b>332,000.00 CHF</b>				
Shelter and Basic Household Items			113,000.00 CHF				
Livelihoods							
Multi-purpose Cash							
Health and Care			80,000.00 CHF				
Water, Sanitation & Hygiene			93,000.00 CHF				
Protection, Gender and Inclusion			19,000.00 CHF				
Community Engagement and Accountability			16,000.00 CHF				
Education							
Migration			11,000.00 CHF				
Environmental Sustainability							
<b>Enabling Approaches</b>			<b>168,000.00 CHF</b>				
Coordination and Partnerships			14,000.00 CHF				
Secretariat Services			39,000.00 CHF				
National Society Strengthening			115,000.00 CHF				
<b>Total</b>			<b>500,000.00 CHF</b>				

## Contact information

For further information, specifically related to this operation please contact:

### In the Red Cross of Central African Republic:

Jean Moise Modessi Wagedo, DM CARCS, Email : [modessi13@gmail.com](mailto:modessi13@gmail.com)

### In the IFRC

- **IFRC Delegation Chad and CAR:** Dr. Adinoyi Adeiza, Acting Head of Delegation, [Adinoyi.adeiza@ifrc.org](mailto:Adinoyi.adeiza@ifrc.org)
- Wilfried Mbolissa Nguerekoundou, Operations officer, Central African Republic, Bangui Cluster, [wilfried.mbolissa@ifrc.org](mailto:wilfried.mbolissa@ifrc.org)

### For IFRC Resource Mobilization and Pledges support:

- **IFRC Regional Office for Africa** Louise Daintrey, Regional Head, Strategic Engagement and Partnerships, [Louise.daintrey@ifrc.org](mailto:Louise.daintrey@ifrc.org)

### For In-Kind donations and Mobilization table support:

- **Logistics Coordinator for Africa**, Rishi Ramrakha, Head of Africa Regional Logistics Unit; Email: [rishi.ramrakha@ifrc.org](mailto:rishi.ramrakha@ifrc.org)

### Reference



Find more information about the regional Emergency Appeal here:

[Sudan Crisis: Population Movement Neighbouring Countries](#)