


www.ifrc.org
Saving lives,
changing minds.

International appeal

Pacific region: Tropical Cyclone Pam

 International Federation
of Red Cross and Red Crescent Societies

International Appeal n° MDR55001

81,000 people to be assisted

Appeal launched 23 March 2015

CHF 575,000 DREF loan

Glide n° [TC-2015-000020-VUT](#)

CHF 5,741,776 Appeal budget

Ends 31 March 2017

Summary

This **International Appeal** seeks a total of **CHF 5,741,776** to enable the IFRC to support the coordinated response on a preliminary basis of the **Vanuatu Red Cross Society (VRCS), Kiribati Red Cross Society (KRCS), Solomon Islands Red Cross Society (SIRCS), Tuvalu Red Cross Society (TRCS) and Papua New Guinea Red Cross Society (PNGRCS)** to deliver emergency assistance and longer-term support to some **81,000 people (14,200 households)** following Tropical Cyclone Pam (and other storms) for a period of **24 months**.

The operations in the five countries focuses on the sectors of **assessments and coordination, relief, shelter and settlements, water and sanitation and emergency health**, with initial provisions for **early recovery activities in shelter, livelihoods as well as National Society capacity building, restoring family links (RFL), community resilience, climate change and disaster preparedness initiatives**. **Multi-sectoral risk reduction measures** will be integrated throughout the interventions making sure that all efforts are made to strengthen resilience of affected communities to be better prepared for, respond to and bounce back from any future disaster or shock. The overall budget includes **CHF 246,973 for shelter cluster coordination** across the region. The planned response reflects the current situation and information available at this point of the evolving operation, and will be adjusted based on further developments and more detailed assessments.

Click [here](#) for Emergency Plan of Action (EPoA)

The disaster and the response to date

6 March 2015: Tropical Cyclone Pam forms east of Solomon Islands and quickly develops and gains strength as it moves south towards Vanuatu.

10-11 March 2015: The large weather system starts to have an impact on several Pacific island nations. Heavy rain, strong winds and sea swell, combined with king tides, causes widespread coastal flooding and wind damage.

11 March 2015: Pam looks increasingly likely to hit Vanuatu as a category 5 cyclone. In preparation, the VRCS completed an inventory of its preparedness stocks and alerted emergency response team (ERT) volunteers.

13 March: Tropical Cyclone Pam makes landfall in Vanuatu with winds of more than 250 km/h. An [Information Bulletin](#) is issued for the Pacific and a [DREF Operation](#) is launched for Vanuatu. An Operations Coordinator from IFRC Asia Pacific Zone (APZ) deployed.

14 March: The VRCS team assess the immediate impact, the status of evacuation centres and conduct distributions of basic relief supplies. IFRC FACT is alerted.

15 March: IFRC Pacific Regional Office (PRO) organized a teleconference for Movement partners present in the region, to better coordinate the response. IFRC FACT is deployed.

16 March: A [DREF Update](#) issued. An [Emergency Appeal](#) for Vanuatu is launched for CHF 3.9 million.

17-18 March: DREFs for [Kiribati](#), [Tuvalu](#) and [Solomon Islands](#) are launched.

23 March: An International Appeal, consolidating the five operations, for CHF 5.7 million is launched.



Identification and registration of beneficiary to ensure proper monitoring is in place prior to NFI being distributed in Vanuatu. Photo: Nina Svahn/Finnish Red Cross (top) and IFRC (bottom)

The situation

Tropical Cyclone Pam slammed Port Vila, the capital of **Vanuatu**, on Friday 13 March 2015, with Category 5 strength – the highest level rating for a severe tropical cyclone. The eye of the cyclone passed 25 km south-west of Tanna, Vanuatu's southernmost province, with winds reaching an estimated speed of 250 kph. The Government of Vanuatu issued a formal appeal for international assistance.

The extent of damage and number of affected people outside Port Vila is slowly emerging. Currently, the number of affected is estimated at 166,000 located especially in the southern parts of the country. Water sources have been damaged and an estimated 14,000 homes - both informal and semi-permanent - have been damaged or destroyed. There have been eight confirmed deaths while the main hospital sustained substantial damage.



Affected family whose home was completely damaged by the cyclone. They, like many others, will need assistance in building their home and lives. Photo by Nina Svahn/Finnish Red Cross

While Vanuatu has been hit the hardest, thousands more in nine countries across the Pacific have been affected or are threatened by Tropical Cyclone Pam and other weather systems including Tropical Cyclone Nathan and Tropical Storm Bavi.

In **Kiribati**, rough seas prompted by Tropical Cyclone Pam resulted in widespread coastal flooding with extensive damage in the Kiribati capital, Tarawa. Power and mobile phone networks are working intermittently. The outer islands of Southern Kiribati were struck by strong winds, causing extensive damage to houses. Tropical Storm Bavi was crossing the northern Pacific, and further influenced swells in the region.

In **Papua New Guinea**, two regions experienced flooding and some landslides due to the overall weather system of Cyclone Pam as well as Tropical Cyclone Nathan. Reports from the government indicate that some 50,000 people have been affected in West New Britain, with some 2,000 people affected in the Madang region on mainland Papua. Initial assessments indicate an urgent need for food, jerry cans, mosquito nets and tarpaulins.

In **Solomon Islands**, Tropical Cyclone Pam created strong winds, heavy rainfall, and storm surges that impacted the province of Temotu and Malaita. More than 30,000 people have been affected, with damage to fruit trees, food gardens, agricultural crops, houses, water supply, infrastructure and communications. People living near the coast were evacuated.

In **Tuvalu**, on 11 and 12 March 2015, the effects of Tropical Cyclone Pam caused sea swells, storm surges and saltwater intrusion on the islands. Prolonged sea swells and storm surges reached Nanumea, Nanumaga, Niutao, Nui, Vaitupu, Nukufetau and Nukulaelae atolls. In some islands several houses were inundated houses and crops damaged as waves washed through. The situation has prompted the authorities to declare a state of emergency.

Given the above context, urgent support is needed both for the immediate response but also for the longer term recovery to help communities rebuild their homes and livelihoods.

Summary of current response

Launching of appeal for Vanuatu: The IFRC launched an Emergency Appeal for Vanuatu on 16 March 2015 for a sum of CHF 3.9 million (3.8 million USD) to support the **Vanuatu Red Cross Society (VRCS)** in delivering assistance and support to some 60,000 people (10,000 households). The assistance planned includes emergency health, shelter, clean water, sanitation, and restoring family links. An imminent DREF amounting to CHF 132,996 ([MDRVU002](#)) was approved on 13 March.

DREF allocations: IFRC allocated CHF 73,258 to the **Kiribati Red Cross Society (KRCS)**, CHF 81,873 to **Tuvalu Red Cross Society (TRCS)**, and CHF 153,770 to the **Solomon Islands Red Cross Society (SIRCS)**. The allocations were to enable the National Society's distribute relief items (mosquito nets, kitchen sets, hygiene

parcels, blankets and water containers, and family packs consisting of clothing, hygiene items and blankets) and emergency shelter items (shelter tool kits and tarpaulins).

With the adoption of this integrated regional approach in this International Appeal – covering all the countries that were affected by Tropical Cyclone Pam – the individual operations ([MDRKI001](#), [MDRTV001](#), [MDRSB004](#) and [MDRVU002](#)) -- have been cancelled. A separate loan from the DREF of CHF 575,000 has been approved to start up the activities under this international appeal.

This International Appeal also includes the operations management and coordination support that will be provided from the IFRC Pacific Regional Office (PRO) based in Suva, Fiji. Enhancing disaster preparedness and response capacity at the regional level is equally important, given the context of the Pacific, as is strengthening of regional coordination.

The operational strategy

The operational strategy aims to ensure the immediate needs to affected population are met through relief and recovery actions with emphasis on climate change adaptation and DRR, which contribute to enhance Red Cross Red Crescent National Societies' capacity to build safer and more resilient communities.

Country	Families	People
Vanuatu	10,000	60,000
Kiribati	800	4,000
Tuvalu	800	4,000
Solomon Islands	600	3,000
Papua New Guinea	2,000	10,000
Total	14,200	81,000

Needs assessment and beneficiary selection

A Field Assessment and Coordination Team (FACT) was activated and deployed to Vanuatu and is augmented by is complemented by a surge capacity deployed from the region, including the National Societies of Fiji and Tonga. The FACT is currently undertaking assessments alongside distribution of non-food relief items.

Based on the information that has emerged so far, Tropical Cyclone Pam (and other recent storms) caused significant damage in five countries; Vanuatu, Kiribati, Solomon Islands, Tuvalu and Papua New Guinea. The immediate needs in these countries include emergency relief, shelter, emergency health, water and sanitation and livelihoods.

Emergency relief and shelter are clearly priorities as thousands of families have been displaced after their houses were damaged or destroyed. In several countries and locations, contaminated water sources are posing a threat to health and sanitation. The storms have also had an impact on livelihoods, which will have longer-term implications in many countries. Given the disaster risks in the Pacific region, there is also a need to reduce the risks in future disaster, including ensuring a building back better-approach.

Given the disaster risks in the Pacific region, there is also a need to reduce the risks in future disaster, including ensuring a building back better-approach.

Tropical Cyclone Pam and its devastating impacts were the most recent reminder why the IFRC must continue to invest in strengthening community resilience at the local level. All programmes must aim to bridge the gap



Orientation for staff and volunteers; beneficiary identification and registration process; NFI mobilized and delivered to the affected areas in Vanuatu. Photo: IFRC (top) and Nina Svahn/Finnish Red Cross (middle/bottom)

between humanitarian and development work through sustainable, accountable and participatory approaches that integrate disaster risk reduction (DRR), public health, safe shelter, livelihoods and climate change adaptation strategies.

There is also a need to strengthen the institutional preparedness and organizational capacity of National Societies for them to be better prepared for future disaster response as part of the overall regional system in the Pacific. Support in this regard includes linkages, coordination and cooperation with governments, national disaster management authorities as well as forums and organizations like the Pacific Humanitarian Team (PHT) and the Secretariat for Pacific Communities (SEPAC).

RFL needs in Vanuatu in the aftermath of the cyclone are not significant. As mobile phone coverage is restored throughout the affected areas in Vanuatu an important number of the current caseload will be closed as families can restore family links themselves. However, at the time of launching the appeal, as caseload of 60-100 is still pending and assessment continue. The Australian Red Cross is supporting the operation with an RFL specialist deployed to Vanuatu in cooperation and coordination with the ICRC. A [web-page](#) has been set up where people can search for missing persons and register themselves for family members to find them. RFL needs in the other affected countries are also being assessed, but so far no significant needs have emerged.

Selection of beneficiaries

The vulnerabilities of the affected population are layered and multi-faceted. In their responses, the National Societies covered by this operation will ensure that programmes are aligned with IFRC's commitment to take into account gender and diversity, for example by targeting women-headed households, pregnant or lactating women, and men and boys made vulnerable by the disaster, who have been forced to migrate. These groups will be considered according to level of impact and more priority will be given to those who have lost their houses.

Other aspects to be considered include prevention of sexual and gender-based violence, and protecting children in all programmes. For instance, in evacuation centres that VRCS is managing and other National Societies are supporting, specific and deliberate initiatives are being taken to strengthen protection and security of those availing of shelter, and to mitigate issues such as gender based violence. The initiatives include setting up evacuation centre committees, whose membership takes into account gender and diversity balance, to spur community participation in identifying the key priorities for people in the centres. Representatives of local women organizations will be invited to provide briefings to centre managers with regard to appropriate channels of referring cases of sexual and gender-based violence as well as promote services offered by these organizations.

Relief and recovery programmes will take into account women's and men's distinct range of roles and responsibilities while disability inclusion will be promoted for all interventions, recognizing that people with disabilities have the same fundamental rights as other members of the community. In all, the most vulnerable groups will be involved in community engagement and local decision-making processes.

Proposed sectors of intervention

The proposed sectors of intervention represent the totality of the operations in five countries. All activities will not necessarily be implemented in all the affected countries. This plan is preliminary and will be updated as detailed assessment findings are received and beneficiaries have been properly consulted. Implementation will be done in close coordination with the authorities, relevant clusters and other external partners.

Mainstreaming of risk reduction measures will start from the very beginning of emergency operations, making sure communities are able to build back better. Volunteers from National Societies play a key role in strengthening community resilience as they are often from the communities and are well placed to plan for and respond to disasters that affect their communities.

With the adoption of this integrated regional approach in this International Appeal – covering all the countries that were affected by Tropical Cyclone Pam – the individual operations ([MDRK1001](#), [MDRTV001](#), [MDRSB004](#) and [MDRVU002](#)) -- have been cancelled. A separate loan from the DREF of CHF 575,000 has been approved to start up the activities under this international appeal.



Coordination and partnerships



National Societies have a unique relationship with their host governments in at least 189 countries where IFRC members exist. Their mandate is set up under respective national laws (such as the Vanuatu Red Cross Society Act, est. 1982), and outlines the roles and responsibilities in providing humanitarian support to the government under what is called our “auxiliary status.” As such, National Societies always support the work of their respective authorities. The humanitarian work that the Red Cross undertakes continues past the immediate response.

National Societies have a permanent presence in communities, substantial capacities and are engaged in community development programming related to disaster, health and social services aimed at preventing and reducing the underlying causes of vulnerability. Volunteers live in affected communities, are present to support the long-term recovery and to help people rebuild their lives. This network of volunteers from affected communities is important as they understand local needs.

Across affected countries, National Societies are leading coordination with the government and other actors, with the support of the IFRC, Australian Red Cross, French Red Cross, New Zealand Red Cross, Tonga Red Cross and Fiji Red Cross.

In Vanuatu, the IFRC Secretariat is coordinating the IFRC membership’s international assistance in close liaison with the leadership of the VNRC. An IFRC Country Team leader has been appointed to support VRCS with the management of all IFRC’s international support and global response mechanisms. A five-person Field Assessment and Coordination Team (FACT) has been deployed to complement the regionally deployed assets.

In Suva, PRO is actively participating in meetings of the Pacific Humanitarian Team (PHT). IFRC’s shelter cluster coordinator is supporting the authorities in the coordination of the overall emergency shelter response and providing technical advice to all shelter actors. IFRC PRO is also maintaining close coordination with UNOCHA and other regional partners based in Suva, Fiji. The IFRC zone office and Geneva head office are maintaining close coordination with National Societies with no presence in the region.

IFRC has been contributing to community resilience and reducing the impacts of climate change and disasters through community-level DRR activities. IFRC has contributed to the new regional Strategy for Climate and Disaster Resilient Development, which provides a framework for countries and organizations across the Pacific to plan and implement the integration of climate change and disaster risks to address threats to sustainable development. Resilience strengthening requires a long-term commitment in engaging with communities in their aspirations to take charge of the lasting solutions that address their own needs and vulnerabilities, which especially crucial for countries in the Pacific region.

At the global level, including in the UN Conference on Small Island Developing States held in September 2014, IFRC has called upon governments and local authorities to strengthen resilience and preparedness, and to enhance action on adaptation as a first line of defence for vulnerable people. IFRC also collaborates closely with the Secretariat of the Pacific Regional Environment Programme (SPREP) on the implementation of a project to improve the capacity of meteorology services across 14 countries to communicate weather and climate change information to communities. The commitment to ‘...*strengthen community resilience by helping people to be as healthy as possible and to prevent or reduce risks where they can, so that they may enjoy better and safer living that is also respectful of the environment.*’ (IFRC Strategy 2020) continues to be prioritized and has been reiterated during recent key events like the Sixth Asian Ministerial Conference on Disaster Risk Reduction and the Sendai Framework for Disaster Risk Reduction. IFRC is also an active member of the OCHA-led Regional World Humanitarian Summit Steering Group which is preparing for the World Humanitarian Summit Pacific consultation.

IFRC has been leading the Pacific Shelter Cluster since its activation in 2012. In order to fulfil its commitment to be co-convenor of the Emergency Shelter Cluster, the IFRC has made a provision for the deployment of a Shelter Coordination Team (SCT) in Vanuatu and technical assistance in other affected countries. Even though it will be supported via this appeal, the Shelter Coordination Team will be independent of the IFRC- National Societies operation. The team will be exclusively dedicated to the task of cluster coordination, for the benefit of all actors involved in shelter interventions. A [web page](#) dedicated to the Vanuatu shelter response has been created in the Global Shelter Cluster website.

Areas common to all sectors

Outcome 1: National Societies & IFRC system are better prepared to respond to Tropical Cyclone Pam.

Output 1.1 Surge capacity is provided and supports the National Societies in their immediate responses.

Needs:

- National Societies requested surge support.
- IFRC system (Secretariat and member National Societies) needed to be prepared for response.

Action undertaken:

- ✓ DREF allocations made to support deployment of operational support and rapid assessment teams
- ✓ Surge capacity deployed from the region, including the National Societies of Fiji and Tonga.

Outcome 2: Continuous and detailed assessment and analysis is used to inform the design and implementation of the operation.

Output 2.1 Needs assessments are conducted and response plans updated according to findings.

Output 2.2: Additional assistance is considered where appropriate and incorporated into the plan.

Needs:

- Planning for interventions to be informed by beneficiary needs.

Action undertaken/planned:

- ✓ A Field Assessment and Coordination Team (FACT) deployed to Vanuatu and currently on ground.
- ✓ Assessments ongoing and EPoA will be updated/ revised as per determined needs.



Health & care

Outcome 3: The immediate and medium-term risks to the health of affected populations are reduced.

Output 3.1: Community-based disease prevention, epidemic preparedness, and health promotion measures provided in five countries.

Output 3.2: Mainstream and crosscutting psychosocial support provided in five countries.

Needs:

- Shelters destroyed and damaged (including household toilets and sanitation facilities) by the cyclone, leaving affected people more susceptible to diseases and health risks.

Action planned:

- ✓ Implement a community-based health and first aid programme integrated with psychosocial support.



Water, sanitation & hygiene promotion

Outcome 4: Risk of waterborne, water-related & vector-borne diseases in targeted communities reduced.

Output 4.1: Access to safe water by target population in affected communities increased.

Output 4.2: Access to adequate sanitation facilities by target population in affected communities increased.

Output 4.3: Knowledge, attitude and practice on safe water, sanitation and hygiene by target population in five countries increased.

Needs:

- Need to provide support in safe water supply pending repair of damaged sources.
- Some communities also require support to rehabilitate and increase their water points.
- Environmental sanitation activities, including clearing of debris, needed.

Action ongoing/planned:

- ✓ Distribute safe water in affected communities.
- ✓ Undertake rehabilitation of water points, including rainwater harvesting systems.
- ✓ Organize environmental sanitation activities, including clearing of debris.
- ✓ Undertake hygiene promotion activities at community level.



Shelter and settlements (and household items)

Outcome 5: The immediate shelter and settlement needs of the target population are met.

Output 5.1: Essential household items are provided to the target population

Output 5.2: Emergency shelter assistance is provided to the target population.

Needs:

- Thousands of families have been displaced after their houses were damaged or destroyed.
- Some displaced families staying in evacuation centres or being hosted by others.
- Although stocks of essential household items are available in the markets, demand exceeds supply.

Action ongoing/planned:

- ✓ Distribute non-food items.
- ✓ Distribute tarpaulins and shelter tool kits.

Outcome 6: The medium and longer-term shelter and settlement needs of the target population are met.

Output 6.1: Affected households whose houses were damaged have repaired or retrofitted back better.

Output 6.2: Affected households whose houses were destroyed have rebuilt shelters that have improved physical durability to hydro-meteorological hazards.

Output 6.3: Technical advice on sustainable construction and safe shelter and settlement at the national level

Needs:

- Damage to shelter is significant, and ranges from partial damage to total collapse.
- Affected families need support to repair or rebuild applying 'building back better and safer' principles.

Action planned:

- ✓ Provide shelter repair assistance to families whose houses were partially damaged.
- ✓ Provide families whose houses were destroyed with assistance to rebuild.
- ✓ Promote 'building back better and safer' principles.
- ✓ Provide technical advice to national governments on safe shelter and settlement.



Livelihoods

Outcome 7: Livelihoods are restored among affected populations.

Output 7.1: Appropriate livelihood recovery inputs provided to affected populations to resume income-earning activities.

Output 7.2: Access to predictable income through cash for work and cash for labour opportunities are provided to the affected communities.

Needs:

- Damage to crop and substantial damage to fisheries and livestock, impacting livelihoods.
- Affected households need support to recoup, and potentially diversify, their livelihoods.
- Income-earning opportunities needed by people who usually rely on labour for household income.

Action planned:

- ✓ Provide affected households with inputs to resume livelihoods activities.
- ✓ Engage community members in cash-for-work and cash-for-labour activities.
- ✓ Provide target skilled and unskilled community members with tools of trade.



Institutional preparedness & capacity development

Outcome 8: National Society level of preparedness for future disasters and capacity to deliver sustainable programming and services strengthened.

Output 8.1: Increased skillsets available for National Societies to manage human resources, finances and volunteering needs to better to respond to future disasters and deliver programmes and services

Output 8.2: Increased material capacity is available for the National Society to respond to future disasters, deliver programmes and services

Output 8.3: The capacity of National Society branches strengthened to respond to future disasters, deliver programmes and services.

Needs:

- National Society office buildings damaged.
- Pressure on responding National Societies to scale up staffing and other capacity to run operations.
- Mitigating a potential negative impact on long-term development capacity of National Societies.
- Prudent to support the National Societies involved to 'scale-up without harm'.
- Better institutional preparedness for future potential response.

Action planned:

- ✓ Skillset improvement – through training, coaching and mentoring of staff and volunteers
- ✓ Enhancing facility, equipment and pre-positioned stock capacity – including supporting the National Societies to have improved quantity and quality of disaster preparedness stocks, improved office space, essential equipment, and personal protective gear for staff and volunteers.
- ✓ Branch development – which will strengthen their efficiency and effectiveness deliver services.



Community preparedness, climate change & risk reduction

Outcome 9: Communities' resilience to disasters is protected.

Output 9.1: Risk reduction measures are incorporated in disaster recovery programmes.

Output 9.2: Legal frameworks for disaster risk reduction, preparedness and response are strengthened.

Needs:

- Need to ensure that communities are better prepared to mitigate, and respond to future disasters.
- Need to strength legal and regulatory frameworks for disaster prevention, management and response.

Action planned:

- ✓ Incorporate risk reduction measures in recovery programmes.
- ✓ Provide adequate information to communities on risk reduction.
- ✓ Sensitize community members with knowledge on hazard awareness.
- ✓ Assist community members to translate hazard warnings produced by early warning institutions.
- ✓ Undertake school-based and youth-led DRR awareness raising.
- ✓ Undertake "Youth as Agents of Behavioural Change" training.
- ✓ Support the National Societies in the process to finalize a DM and logistics strategy for the Pacific and further strengthen cooperation and coordination with governments, national Disaster Management authorities and other external stakeholders.



Restoring Family Links

**Outcome 10: Restoring family links (RFL) needs emerging from Tropical Cyclone Pam are assessed and cases are followed up within a month.**

Output 10.1: VRCS is supported to conduct an assessment of RFL needs and implement first-stage responses on behalf of people who have lost contact with family members.

Needs:

- ✓ There were nearly 100 cases of separated family members initially registered on the ICRC Family Links website immediately following cyclone Pam.
- ✓ Many were registered by family members living overseas who couldn't get through to their loved ones in Vanuatu.
- ✓ So far, the RFL support has restored 6 family links and have provided satellite safe and well calls to seven heads across the affected areas.

Action planned:

- ✓ Conduct an RFL needs assessment and gauge the current capacity of VCRC to provide RFL services.
- ✓ Assess RFL-related activities and provide advice on processes and systems undertaken by the relevant Movement components and the authorities.
- ✓ Assess ongoing needs in RFL capacity development of VRCS.



Programme support services

- **Communications:** IFRC communications activities have so far focused on media relations and generating communications materials that support external positioning including regular stories and blogs on IFRC.org, regular key messages and talking points, posts on social media platforms including Twitter and Facebook and production of audio-visual materials. IFRC communications activities will continue to target international audiences while also supporting the communications needs of National Societies, in their domestic markets. A proactive media engagement strategy will be pursued with international news organizations in the region and milestones in the operation will be identified to highlight the impact of the recovery efforts of the Red Cross Red Crescent Movement towards building community resilience in the affected countries.
- **Gender and diversity:** All interventions will take into account gender and diversity. For instance, selecting female-headed households, pregnant or lactating women, and men and boys made vulnerable by the disaster.
- **Human Resources:** Prior to the cyclone, IFRC had no permanent in-country presence in the five countries affected. Ongoing support to these countries has been provided by PRO through short- and longer-term missions. Based on an increased demand for technical and coordination support required to deliver on this plan, a structure will be put in place to guarantee an effective and efficient technical coordination to the involved National Societies so as to deliver the commitments under this operation. As such, a significant portion of the budget is factoring the need for recruitment and/or deployment of international and national staff as well as mobilization of volunteers.

As much as possible, peer-to-peer collaboration among the Pacific will be encouraged. The overall structure for the duration of the operation is still being determined, but will focus on the National Society needs to temporarily increase their staff and volunteers as well as support from the IFRC for management, coordination and for key technical sectors, such as shelter and livelihoods.

At the APZ office, an operations coordinator is in place to provide support specifically for this operation with a recovery coordinator and other sector delegates available for additional support as may be needed. Shelter cluster coordination support will be provided by the regional shelter coordination delegate and the global shelter senior officer based in Geneva, independent from IFRC-National Society operations.

- **Logistics:** Pacific Island countries – with the exception of Papua New Guinea – have relatively small populations but very large geographies. Kiribati for example, has a total land area of 800 square kilometres dispersed over 3.5 million square kilometres of ocean. Providing relief and other services to such remote and geographically vast locations is expensive and slow. It is important, therefore, to note that due to the geographical location and the complexities of in-country transport, especially by sea (due to the large distances between islands), the running costs for the operation are significantly elevated in comparison with other operations. It is also important to consider the limited options available and the long required times to dispatch relief items from Kuala Lumpur to Kiribati.

Professional logistics services will be provided by a logistics delegate, supported by the zone logistics unit (ZLU). Logistics activities aim to effectively manage the supply chain, including procurement, clearance, storage and forwarding to distribution sites following IFRC logistics procedures in full audit trail requirement. They also effectively support a fleet to facilitate the movement of operational staff and supplies.

- **Reporting, monitoring and evaluation:** Provisions have been made in the budget for regular monitoring missions, particularly to the affected countries where IFRC staff will not be stationed. Reporting on the operation will be made in accordance with the IFRC minimum reporting standards. One update will be issued within the first month. A real time evaluation (RTE) is being considered, to be initiated within the first three months, to look at the overall response in the region. A final evaluation will be conducted to assess lessons learned, followed by a final report is expected within three months of the end of the operation.



Budget

See attached [IFRC Secretariat budget \(Annex 1\)](#) for details. It is important to note that due to the geographical location of the five countries in regards to regional shipping centres and the complexities and costs of in-country transport, especially by sea (due to the large distances between islands), the running costs for the operation are significantly elevated in comparison with other operations.

Walter Cotte
Under Secretary General
Programme Services Division

Elhadj Amadou As Sy
Secretary General

Reference documents
Click [here](#) for the Emergency Plan of Action (EPoA)

Contact Information

For further information specifically related to this operation please contact:

In the National Societies

Kiribati Red Cross Society (phone +686 22501):

- Meaua Tooki, secretary general, email: redcross.krcc@gmail.com
- Toubé Aberaam, DM officer, email: dmo.krcc09@gmail.com

Papua New Guinea Red Cross Society (phone +675 325 7016):

- Stanley Kila Pat, secretary general, email: stanleykilapat.pngrcs@gmail.com
- Michael Shembenombo, DM officer, email: msembenombo@gmail.com

Solomon Islands Red Cross Society (phone +688 20706):

- Joanne Zoleveke, secretary general, email: secgen@redcross.org.sb
- Clement Manuri, deputy secretary general, email: depsecgen@redcross.org.sb

Tuvalu Red Cross Society (phone +688 20706):

- Olioliiga Iosua, secretary general, email: kakega@gmail.com
- Tusialofa Finikaso, DM officer, email: t_finikaso@yahoo.com

Vanuatu Red Cross Society (phone +678 272 58):

- Jacqueline De Gaillande, chief executive officer, email: ceo@redcrossvanuatu.com
- Augustine Garae, DM officer, email: disaster-redcross@vanuatu.com.vu

IFRC Pacific regional office, Suva (phone +679 3311 855):

- Aurélie Balpe, head of regional office, email: aurelia.balpe@ifrc.org
- Vuli Gauna, regional DM programme coordinator, email: vuli.gauna@ifrc.org
- Nicolas Verdy, operations coordinator (of APZ DMU), mobile: +60 19 620 0357, email: nicolas.verdy@ifrc.org

IFRC Asia Pacific zone office, Kuala Lumpur (phone: +60 3 9207 5700):

- Martin Faller, head of operations, email: martin.faller@ifrc.org
- Andreas von Weissenberg, operations coordinator; mobile: +60 12 230 7895; email: andreas.weissenberg@ifrc.org
- Nathan Rabe, humanitarian diplomacy coordinator; mobile: +60 19 620 0758, email: nathan.rabe@ifrc.org
- Patrick Fuller, communications manager; phone: +60 3 9207 5705; email: patrick.fuller@ifrc.org

IFRC Geneva:

- Christine South, operations quality assurance senior officer; phone: +41 22 730 45 29; email: christine.south@ifrc.org

For Resource Mobilization and Pledges:

- Rachna Narang, senior relationship officer; mobile: +60 12 630 3868, email: rachna.narang@ifrc.org

For In-Kind donations and Mobilization table:

- Alka Kapoor Sharma, head of zone logistics unit, mobile : +60 12 225 1160, email : alka.kapoorsharma@ifrc.org

For Performance and Accountability (planning, monitoring, evaluation and reporting enquiries)

- Peter Ophoff, head of PMER, email: peter.ophoff@ifrc.org

How we work

All IFRC assistance seeks to adhere to the **Code of Conduct** for the International Red Cross and Red Crescent Movement and Non-Governmental Organizations (NGO's) in Disaster Relief and the **Humanitarian Charter and Minimum Standards in Humanitarian Response (Sphere)** in delivering assistance to the most vulnerable. The IFRC's vision is to inspire, **encourage, facilitate and promote at all times all forms of humanitarian activities** by National Societies, with a view to **preventing and alleviating human suffering**, and thereby contributing to the maintenance and promotion of human dignity and peace in the world.

The IFRC's work is guided by Strategy 2020 which puts forward three strategic aims:



Save lives.
protect livelihoods,
and strengthen recovery
from disaster and crises.



Enable **healthy**
and **safe** living.



Promote **social inclusion**
and a culture of
non-violence and **peace**.

EMERGENCY APPEAL

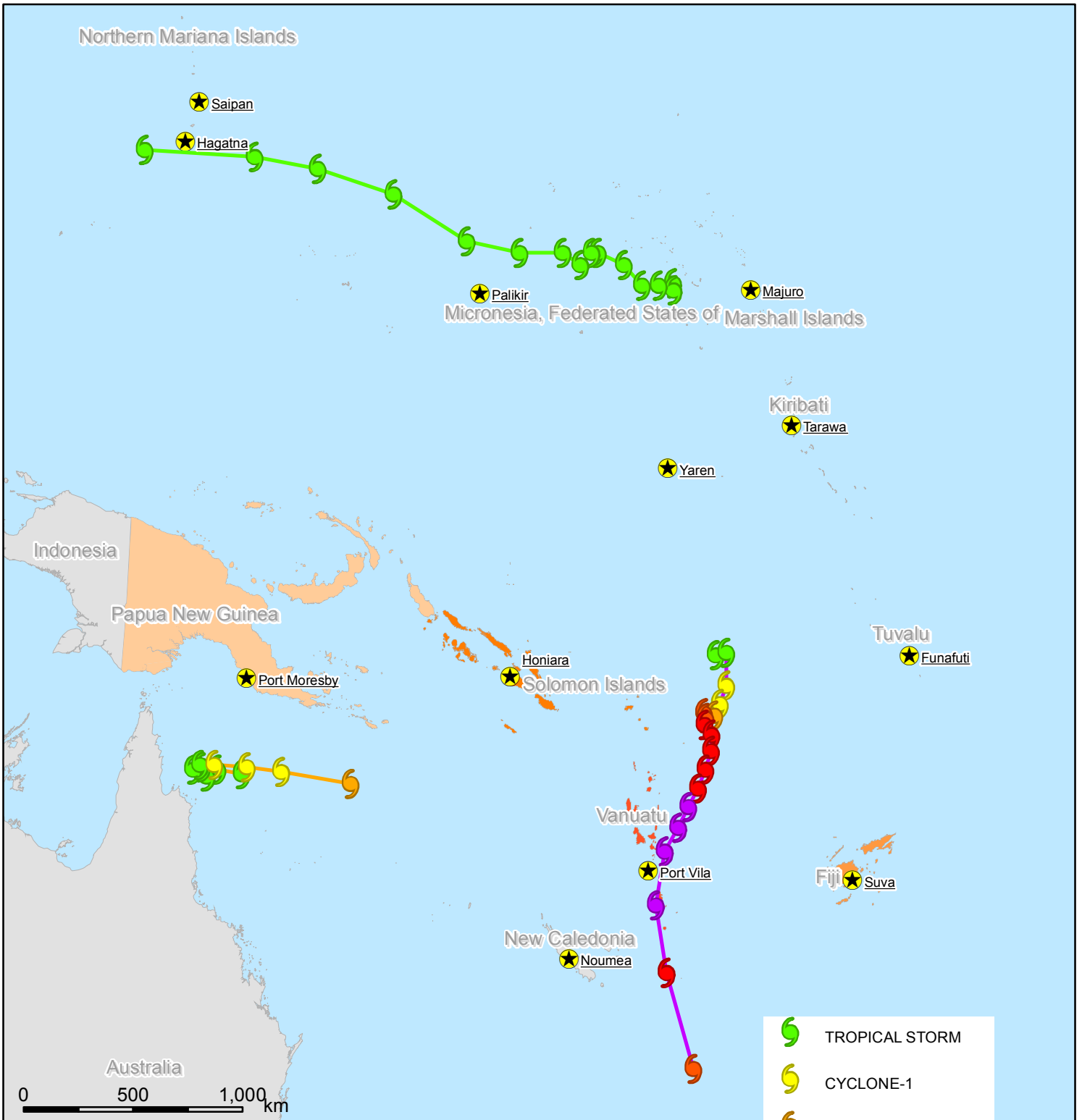
23/03/2015

MDR55001 Pacific : Tropical Cyclone Pam

Budget Group	Multilateral Response	Inter-Agency Shelter Coord.	Bilateral Response	Appeal Budget CHF
Shelter - Relief	959,384			959,384
Construction - Materials	460,000			460,000
Clothing & Textiles	202,584			202,584
Food				0
Seeds & Plants				0
Water, Sanitation & Hygiene	347,555			347,555
Medical & First Aid				0
Teaching Materials				0
Utensils & Tools	188,833			188,833
Other Supplies & Services	20,000			20,000
Emergency Response Units				0
Cash Disbursements	250,000			250,000
Total RELIEF ITEMS, CONSTRUCTION AND SUPPLIES	2,428,356	0	0	2,428,356
Vehicles	95,000			95,000
Computer & Telecom Equipment	40,000	9,000		49,000
Office/Household Furniture & Equipment	18,600			18,600
Total LAND, VEHICLES AND EQUIPMENT	153,600	9,000	0	162,600
Distribution & Monitoring	611,322			611,322
Transport & Vehicle Costs	11,166	18,300		29,466
Total LOGISTICS, TRANSPORT AND STORAGE	622,488	18,300	0	640,788
International Staff	655,295	66,750		722,045
National Staff	145,200	5,500		150,700
National Society Staff	135,000			135,000
Volunteers	221,697			221,697
Total PERSONNEL	1,157,192	72,250	0	1,229,442
Consultants	25,000	84,950		109,950
Professional Fees		25,500		25,500
Total CONSULTANTS & PROFESSIONAL FEES	25,000	110,450	0	135,450
Workshops & Training	337,500			337,500
Total WORKSHOP & TRAINING	337,500	0	0	337,500
Travel	212,068	6,000		218,068
Information & Public Relations	4,193			4,193
Office Costs	174,849	2,550		177,399
Communications	41,493	3,250		44,743
Financial Charges	2,200			2,200
Other General Expenses		10,600		10,600
Total GENERAL EXPENDITURES	434,803	22,400	0	457,203
Programme and Services Support Recovery	335,331	15,106		350,437
Total INDIRECT COSTS	335,331	15,106	0	350,437
TOTAL BUDGET	5,494,270	247,506	0	5,741,776



Pacific: Tropical Cyclone Pam



The maps used do not imply the expression of any opinion on the part of the International Federation of Red Cross and Red Crescent Societies or National Societies concerning the legal status of a territory or of its authorities. Map data sources: ESRI, DEVINFO, UNISYS, International Federation. MDR55001.mxd. Map produced by PMER/KUL.

