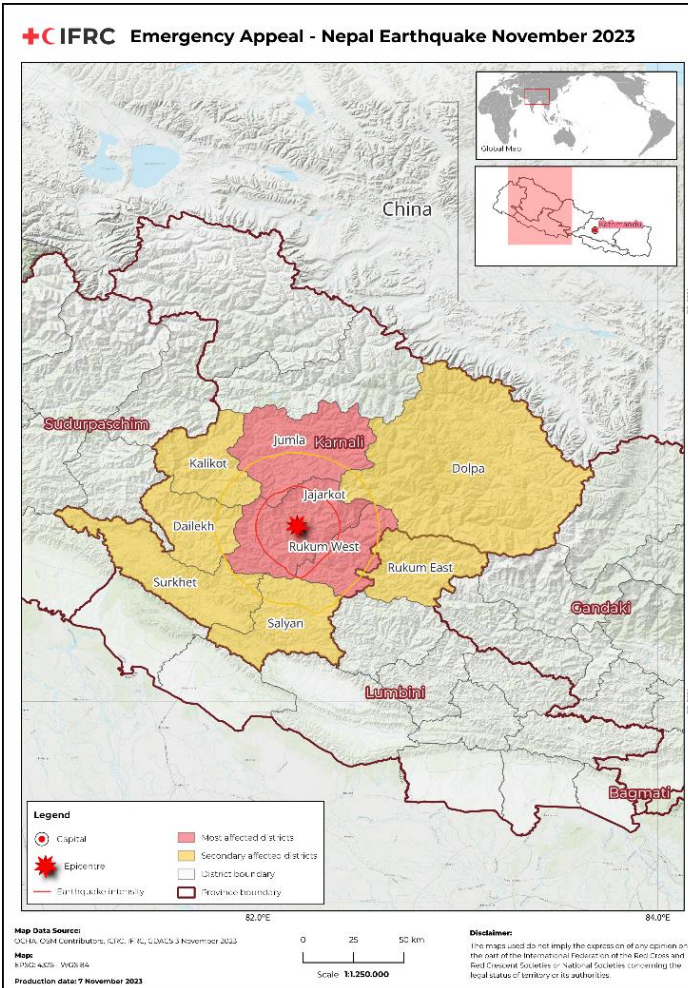




The Nepal Red Cross Society is on the ground providing emergency relief items to affected families. (Photo: NRCS)

Appeal No: <b>MDRNP016</b>	IFRC Secretariat Funding requirements: <b>CHF 5 million</b> Federation-wide Funding requirements: <b>CHF 7 million<sup>1</sup></b>	
Glide No: <a href="#">EQ-2023-000214-NPL</a>	People [affected/at risk]: <b>250,000 people</b>	People to be assisted: <b>50,000 people</b>
DREF allocation: <b>CHF 794,627</b>	Appeal launched: <b>07/11/2023</b>	Appeal ends: <b>31/12/2024</b>

<sup>1</sup> The Federation-wide funding requirement encompasses all financial support to be directed to the Nepal Red Cross Society in response to the emergency. It includes the Nepal Red Cross Society's domestic fundraising requests and the fundraising appeals of supporting Red Cross and Red Crescent National Societies (CHF 2 million), as well as the funding requirements of the IFRC secretariat (CHF 5 million). This comprehensive approach ensures that all available resources are mobilized to address the urgent humanitarian needs of the affected communities.



dead and hundreds remaining injured in 11 districts, of which Jajarkot and Rukum West were the worst affected. The epicentre was identified as Ramidanda of Jajarkot districts. According to the National Emergency Operation Centre (NEOC), approximately 35,321 households (176,605 people) were affected by the earthquake in the 11 districts. This number is increasing as assessments are ongoing. An estimated 250,000 people have been exposed to hazards and are at risk.

This is a largest earthquake to impact Nepal since the 7.3 magnitude earthquake in 2015 and the latest one to hit western Nepal in the past year since November 2022. The impact of the earthquake is expected to be hugely challenging for the most vulnerable in the area, which is already coping with low socio-economic indicators. Additionally, districts like Jajarkot experience seasonal migration of men to India while the women, children, and elderly are left behind.

The Nepal Red Cross Society (NRCS) was on the ground since day one providing life-saving services, including search and rescue, first aid, and relief, among others, to the affected population. At the headquarters level, the EOC was activated and is actively coordinating with the district chapters and other stakeholders.

## SITUATION OVERVIEW

On 3 November 2023 in the late evening, a magnitude 6.4 earthquake struck the Jajarkot district resulting in large scale destruction of physical properties with 157 people reported

## TARGETING

Of the estimated 250,000 people who have been affected, the NRCS is considering covering 20-25 percent corresponding to its overall capacity in the country as well as the expected support coming from other actors. The NRCS will coordinate with local governments to develop targeting criteria that will be inclusive and reach the most vulnerable groups in the communities. The NRCS will also ensure that no one is left behind by the operation by applying a gender and diversity sensitive analysis targeting women-headed households, pregnant and lactating women, single women, people with disabilities, the elderly, children, sexual and gender-based violence (SGBV) survivors, and the displaced.

## PLANNED OPERATIONS

Through this Emergency Appeal, the International Federation of Red Cross and Red Crescent Societies (IFRC) aims to support the NRCS in the response to Nepal's Karnali earthquake. The strategy of the IFRC's response will focus on the following areas:

### **Integrated assistance**

#### ***(Shelter, Livelihoods and Multi-purpose Cash)***

Relief phase: The winter season has started, and the lower temperatures in these mountainous regions have added to the difficulties/challenges faced by displaced families. It is critical to urgently meet the basic, safe, and inclusive shelter and settlement needs of those affected through temporary and transitional shelters, which should include the immediate issuance of tarpaulins, blankets, and mattresses. In addition, household items and warm clothing are also needed for the affected families, especially those who are living outside their homes. These needs will be best met through unconditional cash transfers as per previous experiences in similar settings. (Doti DREF in 2022).



Recovery phase: The Government of Nepal has already announced a recovery and housing reconstruction plan to which the NRCS will be a key partner. The impact of this earthquake is compounding the difficulties and vulnerabilities of communities in areas where low socio-economic indicators and stretched coping mechanisms were already prevalent. Many of the earthquake-affected areas – including Jajarkot, Rukum, Dailekh, Salyan, and Achham districts – experience significant seasonal labour migration of men, with women and children mostly remaining in local communities. Building on what was learned from the 2015 earthquake in Nepal, the NRCS will adopt an integrated recovery approach (housing, WASH, health, and livelihoods) in targeted at-risk communities with a build back better strategy, mobilising its network of volunteers to disseminate safety messages as well as accompanying community members in their recovery process in close coordination with local authorities.



### **Health & Care including Water, Sanitation, and Hygiene (WASH)** ***(Mental Health and Psychosocial Support/Community Health)***

Relief phase: The initial strategy in the emergency phase will be to mobilise volunteers at scale to implement risk-communication activities (noting the potential related risks of waterborne disease in the area - there was an outbreak of cholera in Jajarkot in previous years) focusing on key health issues, including mental health (for which the NRCS has a developing interest and capacity) along with distributing hygiene kits and supporting referral mechanisms where relevant. The NRCS will also consider deploying its Red Cross Emergency Clinic (RCEC) in collaboration with health authorities to cover any clinical gaps as there are emerging reports of impacts to local health facilities.

Recovery phase: The NRCS will implement community-driven health and WASH interventions (including rehabilitating drinking water schemes, supporting government efforts in immunisation, prevention and preparedness for epidemics, pre-hospital care, etc.) as part of the recovery efforts, also considering the rehabilitation of health facilities (including blood transfusion centres) as per ongoing needs. Existing health programming is being supported by the IFRC membership in the same province which can be leveraged to ensure complementarities and the scale-up of such actions.

**Protection and Prevention**

***(Protection, Gender, and Inclusion (PGI), Community Engagement, and Accountability)***

People displaced from their residences are compelled to remain in open spaces and the disaster amplifies the risks of most vulnerable groups. Many of the earthquake-affected areas experience significant seasonal labour migration of men, with women, the elderly, and children largely remaining in local communities. In the coming weeks, as people will be bound to remain in close proximity, there is an immediate need to provide psychosocial support and awareness-raising messages on SGBV prevention and promoting referral pathways among the affected population, particularly for children and women. Similarly, special care and attention towards children, vulnerable women (pregnant and lactating), people with disabilities, and those with chronic illness as well as the elderly is required by looking at their vulnerabilities. The NRCS will be supported to ensure the integration of IFRC minimum standard commitments to gender and diversity in emergencies within their response. The operations team will collect sex, age and disability disaggregated data (SADDD) to identify the key indicators for emergency assistance and ensure gender and diversity amongst its teams.



Community engagement and accountability (CEA) will support protection and prevention initiatives through appropriate and transparent engagement with communities, proper information dissemination on programming and the RCRC Movement’s values, the rights of communities, and feedback mechanisms for communities to channel their concerns, including responses to issues and questions.

**Enabling approaches**

The sectors outlined above will be supported and enhanced by the following enabling approaches:



**Coordination and Partnerships**

- Supporting NRCS positioning with the government and ensuring smooth coordination and alignment at all levels.

- Leveraging the IFRC status agreement to meaningfully engage with the diplomatic community and development partners as well as the Humanitarian Country Team mechanisms.
- Membership coordination as per the Unified Planning process, ensuring that an IFRC-wide planning, monitoring, and reporting system is implemented to capture the collective support and footprint of the IFRC network, with the NRCS at the centre and using lessons learned from similar operations in recent years

### **IFRC Secretariat Services**



- The Secretariat will focus on supporting effective implementation of the operation, accountability, financial compliance, and reporting to donors, among other essential secretariat services.
- The NRCS operations team will lead the implementation, supported by the IFRC CD and Regional Office in coordination with IFRC members who will provide technical back-up and support to the NRCS ensuring quality service standards.

### **National Society Strengthening**






- The operation will support key areas of branch development and Preparedness for Effective Response (PER) in affected districts, including volunteer management, financial compliance, logistics enhancement (including the construction/rehabilitation of local warehouses and pre-positioning of relief items) as well as capacity building for local responders aiming to prepare for and respond to future disasters.
- The IFRC will also support the NRCS in its domestic fundraising efforts, in particular targeting the private sector and the Nepali diaspora. Together with the Swiss Red Cross, the NRCS will be supported using a fundraising tool (Iraiser) for national/international fundraising efforts, which will be activated and complemented by communication products.
- The operation will also pay special attention to the flagship services of the National Society (as mandated by the NRCS Eighth Development Plan), which includes pre-hospital care (first aid and ambulance), blood transfusion services, and eye care.

The planned response reflects the current situation and is based on the information available at the time of this Emergency Appeal launch. Details of the operation will be updated through the Operational Strategy to be released in the upcoming days. The Operational Strategy will also provide further details on the Federation wide approach which includes the response activities of all contributing Red Cross and Red Crescent National Societies, and the Federation-wide funding requirement.

# RED CROSS RED CRESCENT FOOTPRINT IN COUNTRY



## Nepal Red Cross Society

	392
	147,000
	8,244

The NRCS has 392 paid staff members, and more than 146,524 volunteers are active to provide humanitarian support in the country, of which 23,284 are youth volunteers 18 to 39 years of age. Similarly, 20,572 volunteers are

between the ages of 13 to 17, mostly member volunteers from the Junior Youth and Red Cross Circle contributing to humanitarian causes in Nepal through the Red Cross. The NRCS is providing its services, such as first aid, blood transfusions, ambulance, disaster relief, and other emergency and non-emergency services through its seven provincial chapters, 77 district chapters, and more than 1,500 sub-chapters. The NRCS is working as an auxiliary to the public authorities in humanitarian actions in situations, such as natural hazards and epidemic response.

Currently, the NRCS is implementing its eighth development plan which outlines the path to establish the Nepal Red Cross as one of the largest and leading humanitarian organisations in the country. The NRCS is also being guided by its National Society Development Plan which is an important effort to guide its work in the coming years. In 2021, the NRCS reached 2,314,807 people through its disaster response and early recovery services while 787,390 people were reached with long-term services and development programmes (for further data, please refer to [FDRS \(ifrc.org\)](https://ifrc.org) for further information.

### IFRC Membership coordination

The IFRC Country Delegation has been supporting the NRCS in formulating the overall response strategy whereby all in-country IFRC members were invited to contribute. The IFRC is also coordinating with members present in the country. Similarly, the IFRC Country Delegation is sharing information with other members who are not present in Nepal. The IFRC will ensure Federation-wide reporting for the emergency response, demonstrating the collective support of the IFRC membership in providing humanitarian assistance to the affected populations.

The IFRC/British Red Cross and IFRC/Swiss Red Cross teams in Nepal have been supporting a large community-health project in the province, which includes some local capacity building on disaster response. This effort has shown tangible results in the initial stage of the response, with trained volunteers taking early actions in the middle of the night. The Danish Red Cross has pledged initial support to the operation and all in-country partners are participating in regular coordination meetings

chaired by the NRCS. A Partners Call was held on 7 November 2023 with several IFRC members initiating resource mobilization efforts in support of the operation, following a coordinated IFRC-wide approach based on what was learned from previous similar operations.

### **Red Cross Red Crescent Movement coordination**

Nepal has a Red Cross Movement coordination mechanism in place, while the IFRC is continuously sharing information with the ICRC on the response efforts.

### **External coordination**

The NRCS is coordinating with the NEOC, provincial governments, local governments, District Disaster Management Committee (DDMC), national clusters, IFRC, and its in-country members on the immediate response and for further assistance. Ongoing coordination with the Humanitarian Country Team, including shelter cluster coordination, is also ensured through the IFRC. Similarly, district and municipal level coordination is maintained through the respective local units (district chapters and sub-chapters) of the NRCS which are present in the affected areas.

\*\*\*

After 31 December 2024, response activities to this disaster will continue under the [IFRC Network Nepal Country Plan](#) for 2025. The IFRC Network Country Plans consist of an integrated view of ongoing emergency responses and longer-term programming tailored to the needs prioritized by the NRCS in the country, as well as a Federation-wide view of the country's actions. This aims to streamline activities under one plan, while still ensuring that the needs of those affected by the disaster are met in an accountable and transparent way. Information will be shared in due course, should there be a need for an extension of the crisis-specific response beyond the above-mentioned timeframe.

\*\*\*

## Contact information

For further information, specifically related to this operation please contact:

### The Nepal Red Cross Society

- Umesh Dhakal, Executive Director; email; [umesh@nracs.org](mailto:umesh@nracs.org);
- Sagar Shrestha, DM Director; email; [sagar.shrestha@nracs.org](mailto:sagar.shrestha@nracs.org);

### IFRC Country Delegation Nepal

- Azmat Ulla, Head of Delegation Country Delegation Nepal; email; [azmat.ulla@ifrc.org](mailto:azmat.ulla@ifrc.org)
- Herve Gazeau, Programme Coordinator, [herve.gazeau@ifrc.org](mailto:herve.gazeau@ifrc.org),

### IFRC Asia-Pacific Regional Office in Kuala Lumpur

- Alexander Matheou, Regional Director; email: [alexander.matheou@ifrc.org](mailto:alexander.matheou@ifrc.org)
- Juja Kim, Deputy Regional Director; email: [juja.kim@ifrc.org](mailto:juja.kim@ifrc.org)
- Joy Singhal, Head of Health, Disaster, Climate and Crisis unit; email: [joy.singhal@ifrc.org](mailto:joy.singhal@ifrc.org)
- Felipe Delcid, Lead of Evolving Crises and Disasters; email; [felipe.delcid@ifrc.org](mailto:felipe.delcid@ifrc.org)
- Nusrat Hassan, Operations Coordinator; email: [opscoord.pacific@ifrc.org](mailto:opscoord.pacific@ifrc.org)
- Afrhill Rances, Communications Manager; email: [afrhill.rances@ifrc.org](mailto:afrhill.rances@ifrc.org)

### IFRC Geneva

- Christina Duschl, Senior Officer Operations Coordination; email: [christina.duschl@ifrc.org](mailto:christina.duschl@ifrc.org)

### For IFRC Resource Mobilisation and Pledges support:

- Maz Afiqah Mohammad Khairul Azmi, Partnerships-in-Emergencies;  
email [PartnershipsEA.AP@ifrc.org](mailto:PartnershipsEA.AP@ifrc.org)

### For In-Kind Donations and Mobilisation table support:

- Nuraiza Khairuddin, Manager – Regional Logistics Unit; email: [Nuraiza.khairuddin@ifrc.org](mailto:Nuraiza.khairuddin@ifrc.org)

#### Reference



Click here for:

- Link to IFRC Emergency landing page - [GO Platform](#)