

www.ifrc.org  
Saving lives,  
changing minds.

# Emergency Plan of Action update Lebanon: Extreme weather condition

 International Federation  
of Red Cross and Red Crescent Societies

|   |  |
|---|--|
| <b>DREF n° MDRLB005</b>   | <b>GLIDE n° CW-2015-000002-LBN</b>                           |
| <b>Update n° 1; 01-Mar-2015</b>   | <b>Timeframe covered by this update: 2 Months</b>            |
| <b>Operation start date: 09/01/2015</b>   | <b>Operation timeframe: 4 Months<br/>(2months extension)</b> |
| <b>Operation budget: CHF 140,115</b>  | <b>DREF amount allocated: CHF 140,115</b>                    |
| <b>N° of people being assisted: 2,861</b>   |  |
| <b>Host National Society presence (n° of volunteers, staff, branches): 100 Staff, 1,000 Volunteers from EMS, DMU , Blood Banks and Medico Social Department</b> |  |
| <b>Red Cross Red Crescent Movement partners currently involved in the operation: Lebanese Red Cross</b>   |  |

## Summary of major revisions made to emergency plan of action:

*Due to the severity and the frequency of the snow storms the DREF Operation was amended to meet the growing need for repairing ambulances and 4x4 ambulance jeeps that were damaged during our response.*

*Moreover the time frame of the operation had to be extended by two months in order to meet the multiple responses that occurred during these severe snow storms and weather conditions and to complete the beneficiary satisfaction survey.*

## A. Situation analysis

### A.1 Description of the disaster

The snow storm that hit Lebanon had caused extensive damage both on the community and the infrastructure level. The Lebanese Red Cross (LRC) has responded from day one of the storm. A total number of 1,919 cases were supported and transported by the LRC. After the storm, ice had formed on all major roads and temperatures had dramatically decreased which lead the LRC to intervene in major evacuations. Lots of gas suffocation and heating suffocation had been reported and transported due to the extreme cold weather.

On the 10<sup>th</sup> of February and after 2 weeks from the first snow storm another major storm hit the country and caused extreme damage to roads, coastal roads, marine and infrastructure. The storm brought winds to 90 and 110 km/h. The LRC preparedness from the first storm enabled a rapid intervention during the second storm.

On the 17<sup>th</sup> of February and after one week from the second storm, a third snow storm hit Lebanon with. The LRC remobilized all its resources and was on high alert to respond to vulnerable people in the storm. The LRC gave support to 942 cases during 3 days, they mobilized 60 4x4 Jeeps and 40 ambulances to be able to respond to this storm.



**LRC volunteers rescuing people in mountain villages stranded by snow – Photo Credit: LRC**

### A.2 Summary of current response

## Overview of Host National Society

The Lebanese Red Cross mobilized 400 Emergency Medical Team System all over the country. 60 4x4 Ambulance Jeeps and 40 regular ambulances were mobilized to transport 1,919 cases. Cases varied from dead bodies ( due to cold weather), car accidents, heart attacks, evacuation, burns etc... 4 Dispatch stations with 5 dispatchers each were covering the operation and responding to emergency calls. Moreover, a big number of home to Hospital transports for chronic disease patients were supported. Dialysis patients were not able to reach hospitals for their daily treatments, LRC supported in their transportation in order to get their treatment on time

The operation supported as follow:

- 100 volunteers were supplied with snow gear
- 25 stations were supplied with extra sets of snow chains
- 420 volunteers, who were covering 24 hour shifts over 6 days, were supplied and supported with food vouchers
- 35 stations were supported with diesel fuel for heating
- 25 ambulance stations were supported by maintenance costs for the ambulance due to damages from interventions in the snow.

Due to the additional damages on ambulances the LRC assessed a higher need in maintenance cost than the snow chains. Therefore, we required a change of budget lines. The request change requires the shift of budget from snow chains to the maintenance budget.

## Overview of non-RCRC actors in country

In all 3 storms government resources were mobilized for clearing roads, providing electricity and evacuation of civilians. The Civil Defence were supporting in clearing roads and helping vehicles stuck in mountain areas. Mountain village municipalities had rented snow powers to support the government's ministries in clearing road and maintaining access to high altitude mountain villages. The internal security forces were on alert and were supporting motorists and vehicles on all mountain roads.

## A.3 Needs analysis and scenario planning

Due to the severity and frequency of the storms, the LRC intervened with 2,861 beneficiaries rather than the initial assessed 2,000.

## B. Operational strategy and plan

*The operation activities were completed as planned below. However, the beneficiary satisfaction survey had to be postponed due to the engagement of the operation staff and volunteers in the repetitive and unforeseen weather conditions. It is planned to take place during March and April. Hence, the extension was requested for 2 months.*

## C. Detailed Operational Plan

### Health & care

| Outcome 1: The immediate risks to the health of affected populations are reduced       |       |   |   |   |   |   |   |   |   |                      |                       |        |      |
|--|-------|---|---|---|---|---|---|---|---|----------------------|-----------------------|--------|------|
| Output 1.1: The health situation and immediate risks are assessed using LRC guidelines |       |   |   |   |   |   |   |   |   | No. of beneficiaries | No. of Items Provided | Status |      |
| Activities planned   | Weeks | 1 | 2 | 3 | 4 | 5 | 6 | 7 | 8 |                      |                       |        |      |
| Monitor the proper functioning of dispatch stations                                    |       | x | x | x | x | x | x | x | x |                      | NA                    | NA     | Done |
| Conduct regular assessment to identify areas for intervention                          |       |   | x |   |   | x | x | x |   |                      | NA                    | NA     | Done |

| Output 1.2: Target population is provided with rapid medical management of injuries and diseases |       |   |   |   |   |   |   |   |   | No. of beneficiaries | No. of Items Provided | Status |      |
|--|-------|---|---|---|---|---|---|---|---|----------------------|-----------------------|--------|------|
| Activities planned   | Weeks | 1 | 2 | 3 | 4 | 5 | 6 | 7 | 8 |                      |                       |        |      |
| Supply 100 Volunteers with snow gear   |       |   |   |   |   | X | X | X |   |                      | 1,919                 | 420    | DONE |
| Supply EMS stations with Diesel for heating 35 stations  |       | X | X | X | X | X | X | X |   |                      | 13,887                |        | DONE |
| Provide food parcels for 400 volunteers on duty / day  |       | X |   |   |   | X |   |   |   |                      | 1,919                 |        | DONE |
| Maintain Ambulances (25)   |       | X | X | X | X | X |   |   |   |                      | 1,919                 |        | DONE |

## Operation support

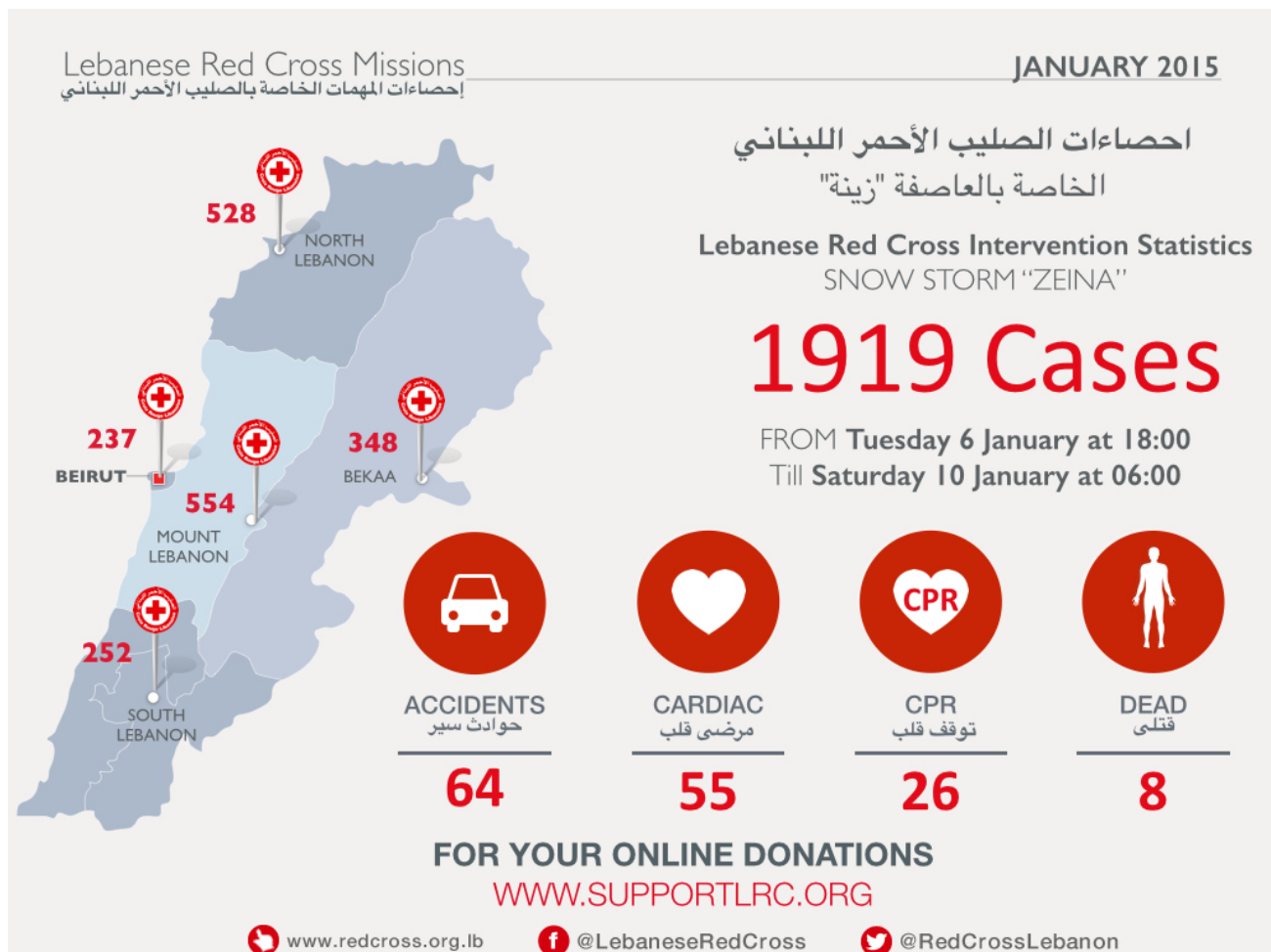
### Monitoring & Evaluation

IFRC are supporting LRC HQ and branches mainly involved in the operation with knowledge and tools for Result Based monitoring and reporting. As already planned in the DREF request a BSS (Beneficiary satisfaction survey) will be taking place in may, in addition to this a training for the LRC volunteers and staff will be held beginning of April order to introduce to them the main objectives and outcomes out of the BSS.

The IFRC continues to engage and have open communications with LRC and where possible the beneficiaries, to ensure a continuous improvement in the efficiency, effectiveness, relevance, sustainability, accountability and impact of the assistance delivered. Evaluation reports were collected from different EMS stations shared with the headquarter in order to have the final report ready. It will be made available three months after the end of the operation and the relevant evaluation made of assistance provided.

### Budget

Refer to annexed budget [HERE](#)

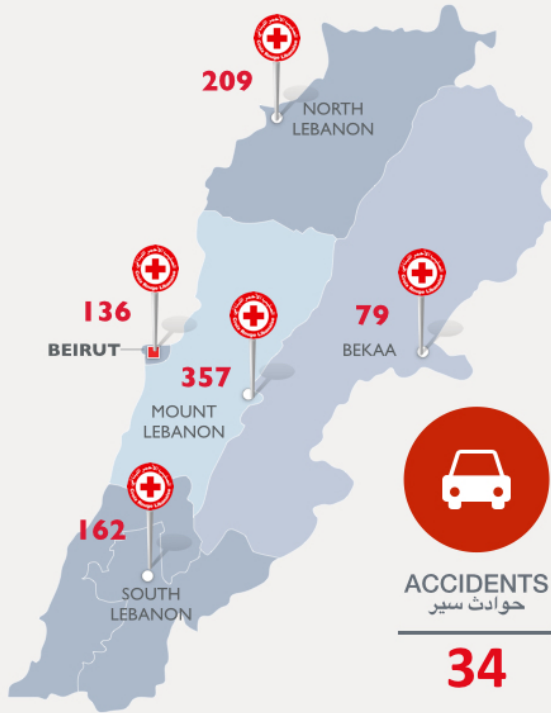


إحصاءات الصليب الأحمر اللبناني  
الخاصة بالعاصفة "وندي"

Lebanese Red Cross Intervention Statistics  
SNOW STORM "WENDY"

942 Cases

FROM Thursday 19 January at 12:00  
Till Saturday 21 February at 06:00



ACCIDENTS  
حوادث سير

34



CARDIAC  
مرضى قلب

32



CPR  
توقف قلب

10



DEAD  
قتلى

3

FOR YOUR ONLINE DONATIONS

[WWW.SUPPORTLRC.ORG](http://WWW.SUPPORTLRC.ORG)

## Contact information

### For further information specifically related to this operation please contact:

- **In Lebanese Red Cross:** Georges Kettaneh, Secretary General, Phone: +961 5 955992/3, Fax: + 961 5 955994, E-mail: [georgeskettaneh@yahoo.com](mailto:georgeskettaneh@yahoo.com)

### In the MENA Zone

- **In IFRC MENA Zone:** Shail Shrestha, Operation Coordinator for Lebanon, Phone: +961 70120725. Email; [shail.shrestha@ifrc.org](mailto:shail.shrestha@ifrc.org)

### For Resource Mobilization and Pledges:

- **In IFRC MENA Zone:** Samah Hassoun, Senior Resource Mobilization Officer, Phone: + 961 70 480 488, Email: [samah.hassoun@ifrc.org](mailto:samah.hassoun@ifrc.org)

### For Performance and Accountability (planning, monitoring, evaluation and reporting enquiries)

- **In IFRC MENA Zone:** Nadine Haddad, Senior PMER Officer, Mobile: +961 70 802 775, Email: [nadine.haddad@ifrc.org](mailto:nadine.haddad@ifrc.org)

## How we work

All IFRC assistance seeks to adhere to the **Code of Conduct** for the International Red Cross and Red Crescent Movement and Non-Governmental Organizations (NGO's) in Disaster Relief and the **Humanitarian Charter and Minimum Standards in Humanitarian Response (Sphere)** in delivering assistance to the most vulnerable. The IFRC's vision is to inspire, **encourage, facilitate and promote at all times all forms of humanitarian activities** by National Societies, with a view to **preventing and alleviating human suffering**, and thereby contributing to the maintenance and promotion of human dignity and peace in the world.

---

The IFRC's work is guided by Strategy 2020 which puts forward three strategic aims:



**Save lives,**  
protect livelihoods,  
and strengthen recovery  
from disaster and crises.



Enable **healthy**  
and **safe** living.



Promote **social inclusion**  
and a culture of  
**non-violence** and **peace**.

---

**Disaster Response Financial Report**

MDRLB005 - Lebanon - Extreme weather condition

Timeframe: 10 Jan 15 to 10 Mar 15

Appeal Launch Date: 10 Jan 15

Interim Report

**Selected Parameters**

|                         |               |           |          |
|-------------------------|---------------|-----------|----------|
| Reporting Timeframe     | 2015/1-2015/2 | Programme | MDRLB005 |
| Budget Timeframe        | 2015/1-2015/3 | Budget    | APPROVED |
| Split by funding source | Y             | Project   | *        |
| Subsector:              | *             |           |          |

All figures are in Swiss Francs (CHF)

**I. Funding**

|                                      | Raise humanitarian standards | Grow RC/RC services for vulnerable people | Strengthen RC/RC contribution to development | Heighten influence and support for RC/RC work | Joint working and accountability | TOTAL   | Deferred Income |
|--------------------------------------|------------------------------|---|--|---|----------------------------------|---------|-----------------|
| <b>A. Budget</b>                     |                              | 140,114                                   |  |   |                                  | 140,114 |                 |
| <b>B. Opening Balance</b>            |                              |   |  |   |                                  |         |                 |
| <b>Income</b>                        |                              |   |  |   |                                  |         |                 |
| <u>Other Income</u>                  |                              |   |  |   |                                  |         |                 |
| <i>DREF Allocations</i>              |                              | 140,115                                   |  |   |                                  | 140,115 |                 |
| <b>C4. Other Income</b>              |                              | 140,115                                   |  |   |                                  | 140,115 |                 |
| <b>C. Total Income = SUM(C1..C4)</b> |                              | 140,115                                   |  |   |                                  | 140,115 |                 |
| <b>D. Total Funding = B +C</b>       |                              | 140,115                                   |  |   |                                  | 140,115 |                 |

\* Funding source data based on information provided by the donor

**II. Movement of Funds**

|   | Raise humanitarian standards | Grow RC/RC services for vulnerable people | Strengthen RC/RC contribution to development | Heighten influence and support for RC/RC work | Joint working and accountability | TOTAL    | Deferred Income |
|---|------------------------------|---|--|---|----------------------------------|----------|-----------------|
| <b>B. Opening Balance</b>               |                              |   |  |   |                                  |          |                 |
| <b>C. Income</b>                        |                              | 140,115                                   |  |   |                                  | 140,115  |                 |
| <b>E. Expenditure</b>                   |                              | -139,978                                  |  |   |                                  | -139,978 |                 |
| <b>F. Closing Balance = (B + C + E)</b> |                              | 137                                       |  |   |                                  | 137      |                 |

**Disaster Response Financial Report**

MDRLB005 - Lebanon - Extreme weather condition

Timeframe: 10 Jan 15 to 10 Mar 15

Appeal Launch Date: 10 Jan 15

Interim Report

**Selected Parameters**

|                         |               |           |          |
|-------------------------|---------------|-----------|----------|
| Reporting Timeframe     | 2015/1-2015/2 | Programme | MDRLB005 |
| Budget Timeframe        | 2015/1-2015/3 | Budget    | APPROVED |
| Split by funding source | Y             | Project   | *        |
| Subsector:              | *             |           |          |

All figures are in Swiss Francs (CHF)

**III. Expenditure**

| Account Groups                                  | Budget         | Expenditure                  |   |  |   |                                  | TOTAL           | Variance |
|---|----------------|------------------------------|---|--|---|----------------------------------|-----------------|----------|
|   |                | Raise humanitarian standards | Grow RC/RC services for vulnerable people | Strengthen RC/RC contribution to development | Heighten influence and support for RC/RC work | Joint working and accountability |                 |          |
|   | A              |                              |   |  |   | B                                | A - B           |          |
| <b>BUDGET (C)</b>                               |                |                              | <b>140,114</b>                            |  |   | <b>140,114</b>                   |                 |          |
| <b>Relief items, Construction, Supplies</b>     |                |                              |   |  |   |                                  |                 |          |
| Other Supplies & Services                       | 53,412         |                              |   |  |   |                                  | 53,412          |          |
| <b>Total Relief items, Construction, Sup</b>    | <b>53,412</b>  |                              |   |  |   |                                  | <b>53,412</b>   |          |
| <b>Logistics, Transport &amp; Storage</b>       |                |                              |   |  |   |                                  |                 |          |
| Transport & Vehicles Costs                      | 25,000         |                              |   |  |   |                                  | 25,000          |          |
| <b>Total Logistics, Transport &amp; Storage</b> | <b>25,000</b>  |                              |   |  |   |                                  | <b>25,000</b>   |          |
| <b>Personnel</b>                                |                |                              |   |  |   |                                  |                 |          |
| Volunteers                                      | 48,000         |                              |   |  |   |                                  | 48,000          |          |
| <b>Total Personnel</b>                          | <b>48,000</b>  |                              |   |  |   |                                  | <b>48,000</b>   |          |
| <b>General Expenditure</b>                      |                |                              |   |  |   |                                  |                 |          |
| Information & Public Relations                  | 5,000          |                              |   |  |   |                                  | 5,000           |          |
| Financial Charges                               | 150            |                              | 23  |  |   | 23                               | 127             |          |
| <b>Total General Expenditure</b>                | <b>5,150</b>   |                              | <b>23</b>                                 |  |   | <b>23</b>                        | <b>5,127</b>    |          |
| <b>Contributions &amp; Transfers</b>            |                |                              |   |  |   |                                  |                 |          |
| Cash Transfers National Societies               |                |                              | 131,412                                   |  |   | 131,412                          | -131,412        |          |
| <b>Total Contributions &amp; Transfers</b>      |                |                              | <b>131,412</b>                            |  |   | <b>131,412</b>                   | <b>-131,412</b> |          |
| <b>Indirect Costs</b>                           |                |                              |   |  |   |                                  |                 |          |
| Programme & Services Support Recove             | 8,552          |                              | 8,543                                     |  |   | 8,543                            | 8               |          |
| <b>Total Indirect Costs</b>                     | <b>8,552</b>   |                              | <b>8,543</b>                              |  |   | <b>8,543</b>                     | <b>8</b>        |          |
| <b>TOTAL EXPENDITURE (D)</b>                    | <b>140,114</b> |                              | <b>139,978</b>                            |  |   | <b>139,978</b>                   | <b>135</b>      |          |
| <b>VARIANCE (C - D)</b>                         |                |                              | <b>135</b>                                |  |   | <b>135</b>                       |                 |          |

**Disaster Response Financial Report**

MDRLB005 - Lebanon - Extreme weather condition

Timeframe: 10 Jan 15 to 10 Mar 15

Appeal Launch Date: 10 Jan 15

Interim Report

**Selected Parameters**

|                         |               |           |          |
|-------------------------|---------------|-----------|----------|
| Reporting Timeframe     | 2015/1-2015/2 | Programme | MDRLB005 |
| Budget Timeframe        | 2015/1-2015/3 | Budget    | APPROVED |
| Split by funding source | Y             | Project   | *        |
| Subsector:              | *             |           |          |

All figures are in Swiss Francs (CHF)

**IV. Breakdown by subsector**

| Business Line / Sub-sector                             | Budget         | Opening Balance | Income         | Funding        | Expenditure    | Closing Balance | Deferred Income |
|--|----------------|-----------------|----------------|----------------|----------------|-----------------|-----------------|
| <b>BL2 - Grow RC/RC services for vulnerable people</b> |                |                 |                |                |                |                 |                 |
| Disaster response                                      | 140,114        |                 | 140,115        | 140,115        | 139,978        | 137             |                 |
| Subtotal BL2   | 140,114        |                 | 140,115        | 140,115        | 139,978        | 137             |                 |
| <b>GRAND TOTAL</b>                                     | <b>140,114</b> |                 | <b>140,115</b> | <b>140,115</b> | <b>139,978</b> | <b>137</b>      |                 |