

www.ifrc.org
Saving lives,
changing minds.

Emergency Plan of Action (EPoA) Russia: Massive forest fire

 International Federation
of Red Cross and Red Crescent Societies

DREF Operation	Operation n° MDRRU019 Glide n° FR-2015-000046-RUS
Date of issue: 24 April 2015	Date of disaster: 12-15 April 2015
Operation manager (responsible for this EPoA): Dr Davron Mukhamadiev, IFRC Regional Representative, Moscow, Russia	Point of contact (name and title): Davron Mukhamadiev, IFRC Regional Representative, Moscow, Russia
Operation start date: 24 April 2015	Expected timeframe: 4 months (23 April – 23 August 2015)
Overall operation budget: CHF 176,518	
Number of people affected: some 5,000 people	Number of people to be assisted: 2,800 people (approximately 800 families)
Host National Society, presence (n° of volunteers, staff, branches): The Russian Red Cross has one regional and network of local branches at the disaster area: Khakassia Republic branch, around 50 staff and volunteers are mobilized to render disaster response and relief operation.	
Red Cross Red Crescent Movement partners actively involved in the operation (if available and relevant): IFRC Regional Representation in Russia.	
Other partner organizations actively involved in the operation: Russian EMERCOM and its divisions at regional level, local authorities in the affected region.	

A. Situation analysis

Description of the disaster

Between 12-15 April 2015, due to the extremely dry weather, high air temperatures and heavy wind in the territory of Republic of Khakassia located in the South Siberian part of Russia, a massive forest fire covered a large territory of 38 settlements. According to the Ministry of Russian Federation for Civil Defense, Emergencies and Elimination of Consequences of Natural Disasters (EMERCOM), about 1,000 private houses, one school and two hospitals were fully destroyed, thus affecting some 5,000 people. 30 people are reported died due to the massive and heavy fire. The total damage estimated equals to 7 billion rubles, equaling to CHF 140 million.

The Russian EMERCOM and the local authorities evacuated more than 4,000 people who currently stay in 23 temporary shelters, and with relatives and host families. The local authorities and the EMERCOM mobilized more than 3,000 professionals, rescuers and anti-fire forces, which allowed to stop the spreading of fire on settlements. The rescues teams also managed to stabilize the situation. The federal government considers providing compensation of damage to the affected population and to build new houses to replace the destroyed ones by September 2015. Until this time, most of affected people will stay in temporary shelters.



The forest fire reaching a settlement in the Republic of Khakassia, South Siberia, Russia. Photo: Russian Red Cross

Summary of the current response

Overview of Host National Society

Since the first days of the massive forest fire, the Khakassian branch of the Russian Red Cross has been providing assistance to the local authorities and to emergency bodies in response actions in the affected area. More than 50 Russian Red Cross staff and volunteers were involved in the initial needs assessment, and assisted the Russian EMERCOM in the evacuation of the people to safe places. Jointly with local authorities they arranged for hot meals and basic assistance in the temporary shelters opened by EMERCOM. 30 Russian RC volunteers will be involved in the DREF operation.

The Russian Red Cross branches in the disaster areas have long-term experience in the core activity of the National Society that mostly focused in health & care as well as disaster response. Most of the branches have good experience in rendering humanitarian assistance to the most vulnerable beneficiaries affected by floods, and other natural and man-made disasters:

The Khakassian Regional branch of the Russian RC has close cooperation with the local EMERCOM based on an MoU between the EMERCOM and the Russian RC at federal level, as well as joint plans of actions at regional level that allowed to conduct the necessary activities during the first days of the disaster:

Overview of Red Cross Red Crescent Movement in country

The IFRC Secretariat has its Regional Representation in Russia, based in Moscow, which provides technical and advisory support to the Russian RC at HQ level in its capacity building programs and in disaster situations ensures the overall coordination with the Russian RC and ICRC to render effective assistance for the affected population.

Movement Coordination

Movement Coordination in Russia is ensured by an MoU signed between the Russian Red Cross, IFRC and ICRC providing a solid base for overall coordination in case of disaster and identifies the leading role of the Russian RC.

The ICRC is active in the North Caucasus and provides necessary assistance to the affected population in case of disasters in conflict and post –conflict areas.

Overview of non-RCRC actors in country

There are no international agencies or UN organizations except the RCRC Movement actors in Russia. The Ministry of Russian Federation for Civil Defense, Emergencies and Elimination of Consequences of Natural Disasters (EMERCOM) is the leading state agency that provides complex response in case of disasters and other emergency situations. The Russian Red Cross cooperates with the Russian EMERCOM based on a Cooperation Agreement that identifies the role of parties in case of disasters. Representatives of Russian RC branches are part of State Emergency Commissions at federal and regional level and coordinate their disaster response activities with the relevant regional divisions of EMERCOM.

Needs analysis, beneficiary selection, risk assessment and scenario planning

The joint assessment, conducted by the Russian Red Cross with local authorities evidences that houses, stocks for cooking/heating (e.g. wood), cooking utensils and bedding/clothes of the most affected households were fully destroyed, damaged or lost. Currently, the affected population is being provided with food and other means of living by local authorities from their emergency stocks. Kitchen gardens of most affected households and the surrounding crop fields have also been damaged.

The joint commission consisting of the representatives of different governmental structures, where representatives of the Russian Red Cross are also included, is conducting damage and needs assessment, which is still on-going at the moment.

So far, around 4,000 people have been evacuated from their houses to the temporary shelters, organized by local authorities and EMERCOM, where hot meal is provided to the affected people. Most of the evacuated people lost their houses - around 2,000 houses were destroyed -, thus people cannot return to the normal life at least in coming six months.

The joint assessment, organized by Russian RC and local emergency bodies showed, that despite of the fact that state authorities provide significant volume of immediate assistance to the affected people, it covers their needs only for the first two or three weeks. Thus, supplementary food and non-food relief assistance is necessary to cover the basic needs of beneficiaries during the coming two-three months. Therefore, the main needs of the affected population include food, non-food and hygiene relief assistance to be covered in the framework of this DREF operation.

Table 1 – Detailed data of the affected regions¹

Indicators	Number
# of settlements	38
# of houses	2,000
# of evacuated population	4,000
Incl. children	1,317
elderly	890
Damaged schools	4
Damaged medical facilities (hospitals)	2

Risk Assessment

Based on the data and information provided by the Russian EMERCOM, the main risk that may negatively affect the situation in the disaster area and consequently, the relief operation, is weather conditions, in particular, dry weather and heavy wind that can increase the risk of forest fire. To prevent the additional negative effects, EMERCOM is planning to evacuate the population from risk areas to the more safe places. Situation analysis, conducted by the Russian Red Cross branches jointly with the local municipalities showed that most of the houses in the affected areas are still at risk, and the evacuation of population, mostly elderly people, and families with children might continue to avoid casualties and additional negative effect of massive fire.

B. Operational strategy and plan

The survival and the immediate needs of the population affected by massive fire are secured and met through the provision basic food and non-food items (food parcels, bed linen sets, blankets, pillows, hygiene kits) for 2,800 people (about 800 households as the average number of family members is 3.5).

Proposed strategy

The Russian Red Cross branches` staff and volunteers have been actively engaging in the response over the past week in the affected areas since the forest fire started. The operation is relief-focused, providing the affected population, and especially the evacuated population, with essential household items and temporary shelter. Relief items are being distributed based on beneficiary selection criteria and in close coordination with the authorities and other actors.

- Bed linen (1 set per person)
- Household items (1 set per family), containing 3 blankets, 3 pillows and 3 mattresses
- Supplementary food parcels based on the minimal requirements SPHERE standards (1 per family)
- Hygiene kits (1 per family).

¹ Information provided by regional authorities and EMERCOM divisions in disaster areas.

Composition of hygiene kits	
Towel (70x140 cm)	1 piece
Toilet soap	1 piece
Soap	2 pieces
Shampoo	0.4 l
Toilet paper	2 rolls
Tooth paste	0.1 kg tube
Tooth brush	2 items
Sponge	1 item
Detergent 0.5 kg	0.5 kg
Items of feminine hygiene	2 packs
Napkins	1 pack

Composition of food parcels	
Sugar	2 kg
Wheat flour	4 kg
Vegetable oil	2 x 0,9 l
Noodles	1 kg
Tea	0.2 kg
Canned beef	4*0.5 kg
Canned fish	8*0,25 kg
Oat flakes	2 kg
Condensed canned milk with sugar	2 x 0.4 kg
Buckwheat	2 kg
Rice	2 kg

The representatives of the Russian Red Cross branches are part of the Regional State Emergency Commissions and they jointly conducted the assessment of the disaster's effects, as well as will conduct the detailed needs assessment involving the representatives of stakeholders and beneficiaries. Accordingly, the list of beneficiaries will be prepared according to the agreed selection criteria, this list will be monitored and based on it, the needed items will be procured, transported and distributed among the beneficiaries.

Selection of beneficiaries

The targeted population are primarily those displaced and affected by massive fire according to beneficiary selection criteria outlined below.

The direct beneficiaries include elderly, women and children as they are part of the most-at-risk groups when a disaster strikes. More specifically, the direct beneficiaries within the local population have been identified based on their level of vulnerability in coping with the disasters. Such factors considered in their selection include socio-economic status of the beneficiaries prioritized as most-at-risk. Female-headed households and large family size are other criteria for consideration.

Priority will be given to:

1. Families most affected by the massive fire and evacuated from their homes.
2. Families headed by women (widows), elderly couples, young couples with small children.

The IFRC Regional Representation in Russia will support the Russian Red Cross technically and financially during the whole project, from the planning phase to the final reporting.



RRC volunteers providing a set of household items to a beneficiary in the fire-affected area by RRC volunteers. Photo: Russian Red Cross

Operational support services

Human resources

The Russian Red Cross will mobilize 30 volunteers led by the Russian RC staff in the field and HQ to carry out this operation and to deliver the assistance to the affected population. The IFRC staff will also be responsible for the overall technical support to the Russian Red Cross in implementing this operation, as well as in reporting and communications. International volunteers insurance will be provided based on IFRC standards.

Logistics and supply chain

The DREF budget has been drawn up based on the assumption that all relief items will be procured and dispatched locally following Russian local procurement procedures. The International Federation's Regional Representation in Russia will provide necessary support to local procurement that will be done at local level by each separate branch.

Information technology (IT)

The Russian Red Cross HQ will maintain regular communication with its field branches through the e-mail correspondence as well as mobile telephone network, and in case of reports and pictures through the internet.

Communications

A press release will be prepared in English and Russian to be disseminated through the local media, as well as to be posted on the official web-site of the Russian Red Cross. Pictures from the operation site will be taken and used for both sending to media and posting on the internal web-site. The field staff and volunteers will be available for media interviews with the preliminary coordination with the Russian Red Cross focal point.

The International Federation will continue to support the National Society to improve its communications capacities and develop appropriate communication tools. In addition, it will support the RRC in advocating with the government and policy makers for better preparedness and response to natural disasters. It will also feature information on the needs and the National Society response on its international web site and through key messages and media stories.

Planning, monitoring, evaluation, & reporting (PMER)

The National Society, the IFRC's Office in Moscow and the IFRC Europe Zone Office will continuously monitor the implementation of activities and control the quality of the relief items before the procurement and distribution. In addition, the Red Cross Society cooperation with IFRC EZO DM team will oversee all operational, implementation, monitoring and evaluation, and reporting aspects of the present operation in the fire affected areas through its country-wide network of branches and volunteers.

The responsibility for day-to-day monitoring of the operation will be with Russian Red Cross local branches.

The affected areas will be also visited by joint IFRC and Russian Red Cross monitoring teams. This will help to identify and, where possible and necessary, to resolve any problems. The situation in the field will be reported on through daily reports and monthly progress reports. Reports will provide necessary information in relation to the progress of the operation, any changes in the situation during the reporting period, and any particular problem, constraints or unmet needs.

At the end of the operation and implementation of this DREF, an after-action review will be conducted. This review will be a joint effort of the RRC and IFRC to ensure that lessons learned from the preparedness work ahead of the season as well as the response operations are captured and used to further developing the National Society, IFRC and partners' capacities. Lessons learnt workshop will be organized in the end of DREF operation for staff and volunteers involved to the operation. This operation is expected to be implemented over four months, and will therefore be completed by 23 August 2015; a final report will be made available three months after the end of the operation, by 23 November 2015.

Administration and Finance

The Russian Red Cross will ensure the proper use of financial resources in accordance with the conditions laid down in the project agreement signed between the National Society and the donor. The IFRC will ensure that financial resources management will take place according to IFRC standards and DREF guidelines.

Contact information

For further information specifically related to this operation please contact:

- **Russian Red Cross:**

Rasia Lukuttsova, President of Russian RC;

phone: +7 495 126 7571; email: mail@redcross.ru

- **IFRC Moscow:**

Dr Davron Mukhamadiev, Regional Representative;

phone: + 7 495 126 15 66; email: davron.mukhamadiev@ifrc.org

- **IFRC Zone Office:**

Alberto Monguzzi, Disaster Management Coordinator;

phone:+36 1 8884 500; email: alberto.monguzzi@ifrc.org

- **IFRC Geneva:**

Christine South, Operations Support;

phone: +41.22.730.4529, email: christine.south@ifrc.org

DREF OPERATION

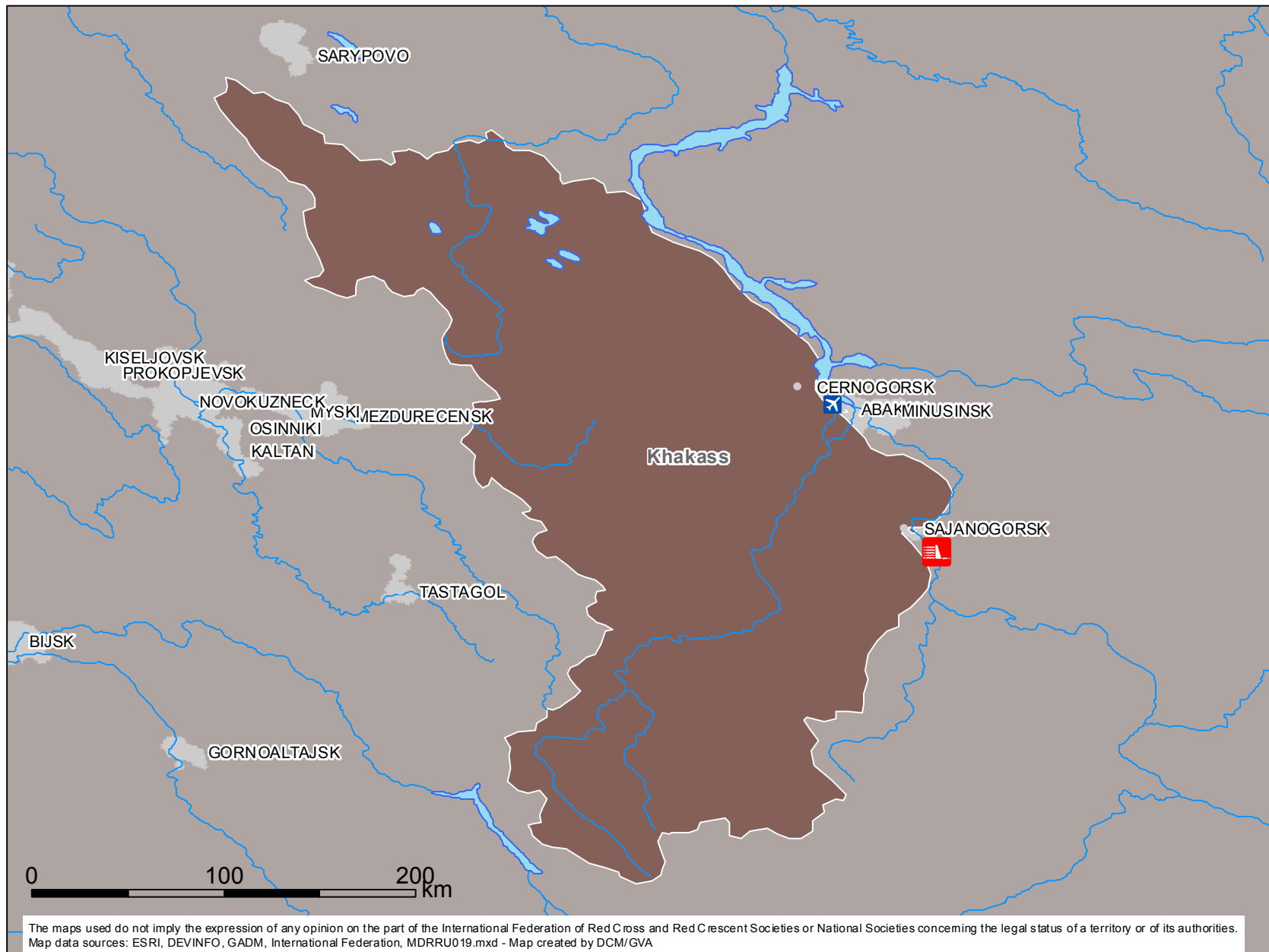
23/04/2015

Russia Massive forest fire

Budget Group	DREF Grant Budget CHF
Shelter - Relief	
Shelter - Transitional	
Construction - Housing	
Construction - Facilities	
Construction - Materials	
Clothing & Textiles	85,200
Food	36,000
Seeds & Plants	
Water, Sanitation & Hygiene	
Medical & First Aid	
Teaching Materials	
Utensils & Tools	
Other Supplies & Services	12,000
Cash Disbursements	
Total RELIEF ITEMS, CONSTRUCTION AND SUPPLIES	133,200
Land & Buildings	
Vehicles	
Computer & Telecom Equipment	
Office/Household Furniture & Equipment	
Medical Equipment	
Other Machinery & Equipment	
Total LAND, VEHICLES AND EQUIPMENT	0
Storage, Warehousing	
Distribution & Monitoring	11,000
Transport & Vehicle Costs	1,500
Logistics Services	
Total LOGISTICS, TRANSPORT AND STORAGE	12,500
International Staff	
National Staff	
National Society Staff	3,600
Volunteers	6,045
Total PERSONNEL	9,645
Consultants	
Professional Fees	
Total CONSULTANTS & PROFESSIONAL FEES	0
Workshops & Training	6,000
Total WORKSHOP & TRAINING	6,000
Travel	
Information & Public Relations	1,000
Office Costs	1,200
Communications	2,000
Financial Charges	200
Other General Expenses	
Shared Office and Services Costs	
Total GENERAL EXPENDITURES	4,400
Partner National Societies	
Other Partners (NGOs, UN, other)	
Total TRANSFER TO PARTNERS	0
Programme and Supplementary Services Recovery	10,773
Total INDIRECT COSTS	10,773
TOTAL BUDGET	176,518



Russian Federation: Forest fire



Between 12-15 April 2015, due to the extremely dry weather, high air temperatures and heavy wind in the territory of Republic of Khakassia located in the South Siberian part of Russia, a massive forest fire covered a large territory of 38 settlements. According to the Ministry of Russian Federation for Civil Defense, Emergencies and Elimination of Consequences of Natural Disasters (EMERCOM), about 1,000 private houses, one school and two hospitals were fully destroyed, thus affecting some 5,000 people. 30 people are reported died due to the massive and heavy fire. The total damage estimated equals to 7 billion rubles, equaling to CHF 140 million.