



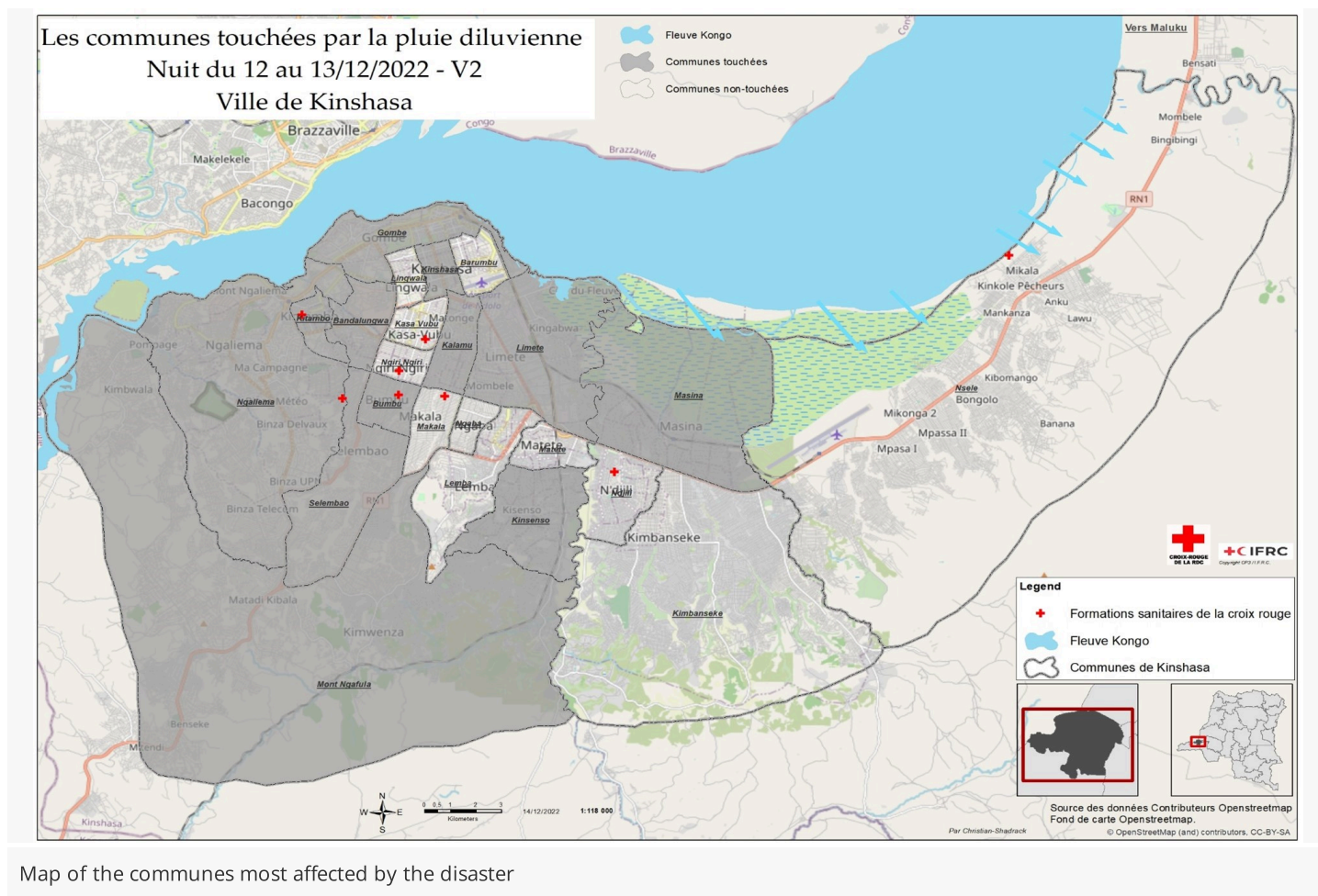
Sanitation activities by RC volunteers in the streets of Kinshasa. Source: DRC RC

Appeal: MDRCD039	Total DREF Allocation: CHF 398,745	Crisis Category: Orange	Hazard: Flood
Glide Number: FL-2022-000376-COD	People Affected: 84,624 people	People Targeted: 9,000 people	
Event Onset: Sudden	Operation Start Date: 28-12-2022	Operational End Date: 30-06-2023	Total Operating Timeframe: 6 months

Targeted Areas: **Kinshasa**

The major donors and partners of the IFRC-DREF include the Red Cross Societies and governments of Australia, Austria, Belgium, Britain, China, Czech, Canada, Denmark, German, Ireland, Italy, Japan, Luxembourg, Liechtenstein, Malta, Norway, Spain, Sweden, Switzerland, Thailand, and the Netherlands, as well as DG ECHO, Mondelez Foundation, and other corporate and private donors. The IFRC, on behalf of DRC Red Cross, would like to extend thanks to all for their generous contributions.

Description of the Event



Date of event

13-12-2022

What happened, where and when?

On 13 December 2022, from 2am to 7.30am, torrential rain fell continuously on the city of Kinshasa, causing major flooding. On 16 December 2022, following initial assessments, the DRC Red Cross was able to carry out another assessment of the situation in 16 of the 24 communes in the province of Kinshasa that had been flooded. These are the affected communes: Mont Ngafula, Ngaliema, Ngaba, Selembao, Kintambo, Bandalungwa, Bumbu, Kisenso, Ngiri-Ngiri, Barumbu, Matete, Limete, Masina, Makala, Gombe and Kalamu. It was estimated that 84624 people (14104 households) were affected by the flooding, including 33510 in direct need, with 5585 houses flooded. The rains continued to fall in December in the city of Kinshasa and several other families were affected. In January 2023, another assessment conducted by the DRC Red Cross was carried out showing that the damage had increased. Around 44000 people were directly in need and 7336 houses had been flooded, 806 of which had been destroyed.

Damage to infrastructure, the road network and the agro-pastoral reserves of several farms and households was also identified. A total of 169 people were recovered from the rubble, 6 people were reported missing and 87 people were injured. Losses of property and livelihoods were also reported in the affected households. Several host families were affected by the disaster. The rapid response of the DRC Red Cross through various forms of support, including this DREF allocation and other contributions from its partners in the country, contributed to the response of the most urgent needs in the most affected communes of Kinshasa.





Volunteers raising awareness on the use of Aquatabs and mosquito nets in the Kitambo commune. Source: DRC RC



Distribution of Aquatabs and mosquito nets in the commune of Kitambo.. Source: DRC RC

Scope and Scale

The intensity of floods experienced in December 2022 from the night of the 13th led to severe damage to infrastructures and communities' material, livelihood, and facilities. At the onset, the emergency prompted a launch of the operation with preliminary data given that the situation in November was still volatile with rainfall which remains significant and was forecasted to continue until December 2022.

In January, based on the detailed assessment made by DRC Red Cross, an update of the scale of the disaster was established to update the initial preliminary data collected at the onset. Initially 14,104 people registered as affected during the DRC RC's rapid assessment with provincial authorities, the detailed assessment revealed that around 7,336 households were directly affected by floods in 24 communes and not only 14. Overall, the crisis affected around 84,000 people.

In December, sixteen (16) out of 24 communes in the city of Kinshasa were affected. Representing 81 neighborhoods, 5,585 houses were flooded by water, and 507 destroyed houses were the most affected. Details are accessible in the initial plan. The detailed assessment confirmed that 84,000 people were affected with the directly affected being 44,000 people (7,336 households directly affected with houses flooded), 806 houses were destroyed while several others reported partially damaged at different levels, 50% on land flooded in Kinshasa; another 44,000 indirectly affected being the host families, the people affected by disruptive livelihood and various other consequences.

In total, the floods affected 24 communes in the city of Kinshasa. The most affected communes were Mont Ngafula, Ngaliema, Selembao, Kitambo, Bandal, Bumbu, Ngiri-Ngiri, Barumbu, Limete, Kalamu, Masina, Nsele, Lemba, Lingwala, Ngaba, Gombe, Kinsenso, Kinshasa.

Overall, the floods brought significant loss and damage, including the destruction of homes, basic infrastructure, and water points, more than a dozen schools, health centers, and farms, loss of property and livelihoods, and food stocks. In addition, national road number 1 linking Kinshasa to the port was cut, requiring Government intervention to restore the link during these periods of heavy trade with other cities and the entry of products into the country.

Neighboring municipalities and households not directly affected were nevertheless indirectly affected by the displacement of several homeless households. The affected population was forced to leave their homes and find refuge with host families to erect makeshift shelters that remain vulnerable to bad weather, especially in this rainy weather. Socio-environmental living conditions deteriorated further due to the impact of these floods on water points, latrines, and household hygiene conditions, especially for those homeless. Water points and latrines were damaged in flooded areas and remained inadequate in host areas; as a result, access to drinking water, hygiene, and sanitation are not only limited but even low.

The risks arising from the situation described above were significant for health, living conditions, and even access to necessities. A surge in cases of certain endemic water-borne diseases due to overflowing latrines and poor hygiene conditions. Another main consequence of the disaster was the rising food prices on the market following the temporary failure to supply the city of Kinshasa with foodstuffs from the province of Kongo Central and the ports of Matadi, Boma, and Ledia.

National Society Actions

Have the National Society conducted any intervention additionally to those part of this DREF Operation?

Yes



<p>Please provide a brief description of those additional activities</p>	<p>There was the strengthening of the partnership with the Chinese, Belgian, and Japanese Embassy during the assistance of the victims following the flood in Kinshasa. With the support of the Association of Chinese-Owned Enterprises in the DRC and the Chinese Mining Companies in the DRC, the Red Cross assisted 1220 households with the distribution of food in the communes of Ngaliema and Mont-Ngafula in the following ways: 25 Kg of Rice, 25 Kg of Format Flour and 5 Liters of vegetable oil.</p> <p>With the support of the Belgian Embassy in the DRC, the Red Cross assisted 1220 households in the same communes with hygiene kits.</p> <p>With the support of the Japanese Embassy in the DRC, the Red Cross distributed a blanket and mattress to 1,530 households each in the communes of Selembao, Mont Ngafula and Ngaliema.</p>
---	---

IFRC Network Actions Related To The Current Event

<p>Secretariat</p>	<p>The DRC Red Cross Society received technical support from the staff present at the Cluster Office based in Kinshasa for the planning and implementation of this operation. With the IFRC, the DRC RC obtained the DREF and support from a Surge specialist in Cash Transfer for 3 months who accompanied us during the operation.</p>
<p>Participating National Societies</p>	<p>The DRC Red Cross worked in close collaboration and maintained constant coordination with all partners in the country during the operation but were not involved in the response. These are French Red Cross, Swedish Red Cross, Spanish Red Cross, Belgian Red Cross and Luxembourg Red Cross.</p>

ICRC Actions Related To The Current Event

The ICRC has an office in the country and the DRC Red Cross maintains constant coordination with the ICRC in the country, including as part of the implementation of this DREF. However, they did not actively took part to the response to this disaster.

Other Actors Actions Related To The Current Event

<p>Government has requested international assistance</p>	<p>Yes</p>
<p>National authorities</p>	<p>In view of the seriousness of the damage, the Prime Minister of the DRC convened a crisis meeting on the afternoon of the same day, during which the following decisions were taken:</p> <ul style="list-style-type: none"> - Instructions to the relevant departments to do their utmost to find the missing persons - care for the injured - and to ensure a dignified funeral for the deceased. - A team of experts from the Roads Office was dispatched to assess the situation and "find a rapid solution to rehabilitate the damaged road".
<p>UN or other actors</p>	<ul style="list-style-type: none"> • OCHA has provided expertise to the ministry through the United Nations Disaster Assessment and Coordination Organization (UNDAC) which provided an emergency team to help assess needs and develop a response plan. • OCHA, UNICEF, and ACTION MAP were involved in the evaluation. • The Belgian Embassy supported 1200 households with the individual hygiene kit in the municipalities of mont ngafula et ngaliema.. • The organization of Chinese-owned companies in the DRC through the Chinese Ambassador in the DRC also supported 1220 households with food in the same municipalities.

Are there major coordination mechanism in place?



Regular coordination meetings between the DRC RC, the IFRC and the Participating National Societies (PNSs) were organized with a view to pooling efforts and ensuring synergy of action.

The DRC Red Cross participated in all the meetings organized by the Secretariat of Humanitarian Affairs and worked together with the UNDAC team that had come to support the government in its action, it was during these meetings that the Red Cross received the various donations that the government had in turn received from the other partners for distribution to the various victims in the different communes.

Needs (Gaps) Identified



Shelter Housing And Settlements

The affected population was forced to leave their homes and found refuge with host families or on other sites where they erected makeshift shelters that remain vulnerable to bad weather, especially during this rainy weather.

806 houses were destroyed in the 16 communes. Most of these houses are rental houses whose households are tenants who have been able to save their property and materials for the most part. These households, therefore, need financial support to access housing or to make up for essential goods lost in floods or the collapse of their homes.



Health

For the populations affected, the experience of these floods and the sudden damage to their homes with the ensuing expenditures, has obviously created vulnerabilities and an impact at the psychosocial level. Psychosocial needs were compounded by all the protection problems they generate. In the rapid assessment, it was estimated that 15% of the displaced population has specific needs, including exposure to trauma, chronic patients, people with disabilities, the elderly, female-headed households, child-headed households, pregnant women and nursing mothers, etc.

In addition, insalubrity, deteriorating hygienic conditions, difficulties linked to access to water, and overcrowding of host families created an environment conducive to the development of water-related, diarrheal, and especially vector-borne diseases.

The injured people needed relief and evacuation to which the Red Cross contributed. The wounded were evacuated to the local health facilities; the coverage of medical costs related to the treatment of the persons affected was very high.

Faced with this disaster, the action of the Red Cross of the DRC was limited for lack of means, nevertheless, the first aid volunteers rescued 87 injured following the floods, directed and evacuated the elderly in the flooded areas in the secure places and injured to the health centers, evacuate mortal remains to morgues in the city of Kinshasa.

In addition, the distribution of mosquito nets to households was necessary to contribute to malaria prevention.

Strengthening household essentials to reduce their exposure to bad weather and disease, as well as access to care for cases of illness, was crucial to mitigate the risk of expansion in the event of an epidemic or disease. Access to care depended on the already precarious income following these floods and under pressure with the damage to housing and equipment.

From the perspective of National Society capacity, an expansion of epidemiological and disease surveillance at the community level was essential. Passive surveillance within the communities to cover the areas covered was necessary for this intervention. DRC Red Cross benefited from the CP3 project system and experience already in place in some health zones of Kinshasa.



Water, Sanitation And Hygiene

When the disaster happened, water points and latrines were damaged in flooded areas and were insufficient in reception areas. As a result, access to drinking water, hygiene and sanitation was not only limited, but also poor. The risk of water-borne and vector-borne diseases increased due to overflowing latrines and poor hygiene conditions. Around 7336 houses were flooded and their latrines and points were non-functional. Most of these households' latrines were unusable due to stagnant and flooded water and waste from the rains.

The rural communes of Mont Ngafula, Galiema, Kinsenso and Messine had wells and needed support to provide access to drinking water. On the other hand, the other towns in the urban area use piped water, the circuits of which were initially disrupted by the floods that affected the pipes and water treatment areas. The major water network supplying western Kinshasa was damaged. Despite the circuit being gradually restored, the situation remained extremely difficult for the communities



Operational Strategy

Overall objective of the operation

The objective of this DREF operation was to provide assistance to 1500 households affected by flooding in Kinshasa through the provision of multi-purpose cash and support to the improvement of water and hygiene conditions for the most vulnerable households. Initially planned for 5 months, an extension of 1 month was granted to the DRC Red Cross. The intervention lasted 6 months and reached its objective as the following was achieved in terms of target:

- 1500 HH, i.e. 9000 people reached with multipurpose cash, Aquatabs and mosquito nets
- 500 HH, i.e. 3000 people reached with tarpaulins
- 71471 people reached with awareness-raising in disease prevention, hygiene promotion and prevention and protection against sexual exploitation and abuse (PSEA).

Operation strategy rationale

To ensure an effective response, the DRC Red Cross launched a DREF to assist 1,500 households in the 16 communes affected by the floods, with technical support from the IFRC and its partners.

The needs analysis, beneficiary selection, scenario planning and risk assessment were updated in line with the new operational parameters, and DRC Red Cross adjusted the implementation accordingly.

DRC RC's intervention focused on the following areas:

1. Livelihoods and support for basic needs: Thanks to multi-purpose financial assistance, the most urgent needs of 1,500 households have been covered. The aim was to cover their needs in terms of basic necessities (health requirements and replenishment of household items according to household needs) through multi-purpose money transfer services via a financial service provider (SOFICOM).
2. Health: Psychosocial support, first aid
3. WASH: Hygiene Promotion and Community Engagement
4. Shelter: Distribution of tarpaulins to households who have lost their homes

Unconditional financial assistance has been used for households that have also lost their water storage equipment and other essential hygiene equipment, as well as basic necessities, depending on their needs and the urgency of immediate coverage in kind or access to housing, health services, etc.

As part of its strategy, DRC RC carried out an in-depth needs assessment from the outset.

In fact, the first rapid field assessment provided the information on which the plan for this DREF was based. This detailed needs and gaps assessment, carried out in coordination with partners and target communities, focused on all municipalities using tools such as ODK.

The results of the assessment were used to identify target communities/individuals based on the criteria defined in the targeting above. This assessment also served as the basis for a possible revision of the emergency action plan.

Cash transfer assistance was planned in 16 communes: Mont Ngafula, Ngaliema, Ngaba, Selembao, Kitambo, Bandalungwa, Bumbu, Kisenso, Ngiri-Ngiri, Barumbu, Matete, Limete, Masina, Makala, Gombe and Kalamu. However, support from China and the Belgian Embassy helped 1,220 households in Mont Ngafula, Ngaliema, by providing food and hygiene kits.

The 14 communes not covered by Chinese and Belgian Embassy assistance continued to be targeted by cash assistance, but the 16 targeted communes received support from the DRC RC for all other response activities.

Targeting Strategy

Who was targeted by this operation?

The DRC Red Cross planned to assist the affected populations of 16 communes of the city: Mount Ngafula, Ngaliema, Ngaba, Selembao, Kitambo, Bandalungwa, Bumbu, Kisenso, Ngiri-Ngiri, Barumbu, Matete, Limete, Masina, Makala, Gombe and Kalamu.

Considering the extent and importance of the damage recorded, the DREF operation targeted 1500 households or 9000 of the most vulnerable people, with an average of 6 people per household.

Explain the selection criteria for the targeted population

The households whose homes had been destroyed were considered as top priority for their high level of exposure. The following vulnerability criteria were then be cross-referenced to refine the targeting:

- People particularly vulnerable to the risks of waterborne and vector-borne diseases,
- Households with vulnerable people (elderly people, pregnant and lactating women, children under 5 years old, people with disabilities, female-headed households,)
- Households that lost their assets or livelihoods.



- Most vulnerable households that did not receive any assistance from other partners.

The targeted households were identified and selected according to their level of vulnerability based on the above criteria identified during the rapid assessment and validated with the communities during the detailed assessment. Besides, the DRC RC ensured that the operation was in line with the Red Cross movement's commitment to respect gender equality and diversity. The DRC RC ensured that the criteria for selecting beneficiaries were adapted to the vulnerability and took into account other cultural aspects as well.

Total Targeted Population

Women	2,754	Rural	60%
Girls (under 18)	1,836	Urban	40%
Men	2,646	People with disabilities (estimated)	1%
Boys (under 18)	1,764		
Total targeted population	9,000		

Risk and Security Considerations

Please indicate about potential operation risk for this operations and mitigation actions

Risk	Mitigation action
The affected areas are impacted by epidemics (cholera and other waterborne diseases).	The DRC RC's humanitarian response included the Wash and Health sector
Difficult access to people affected following the destruction of infrastructure (National Road 1, water supply, shelters)	The government has rehabilitated the road to allow vehicles supplying the city of Kinshasa with foodstuffs from the province of Kongo-Central. REGIDESO has rehabilitated the water supply system and made water tanks available to the population during the rehabilitation period. The government provided affected people with financial resources to enable them to rent houses.
Risk of inflation and difficult access to goods and foodstuffs	The DRC Red Cross carried out a market analysis which led to the conclusion that the cash transfer was feasible.

Please indicate any security and safety concerns for this operation

The areas concerned by this action plan do not present any particular risks, as the Red Cross is present in the 26 communes of the city of Kinshasa, with a network of volunteers drawn from the community, and is accepted in all intervention zones.

However, as part of this intervention, DRC RC ensured the personal safety of all stakeholders; the project manager was responsible for monitoring the health and security context which could have affected the staff and volunteers mobilized. Appropriate personal protection was given to each volunteer and supervisor, through visibility equipment.

Has the child safeguarding risk analysis assessment been completed?

No



Implementation



Shelter Housing And Settlements

Budget: CHF 64,472

Targeted Persons: 3,000

Assisted Persons: 3,482

Indicators

Title	Target	Actual
Number of households reached by the distribution of tarpaulins	500	500

Narrative description of achievements

The operation enabled the training of 160 volunteers and 16 supervisors in the distribution process. In terms of Shelter, Red Cross volunteers, in collaboration with the administrative authorities, distributed tarpaulins to 500 households, i.e. 2 per household. These were households whose houses had been completely destroyed. The action reached 3,482 people in the households, including 1,776 men and 1,706 women.

Lessons Learnt

The involvement of beneficiaries in all steps of the implementation of activities (detailed assessment, establishment of vulnerability criteria, selection of 500 households for assistance from the DRC Red Cross and setting of distribution dates) helped the field team avoid repeated complaints and tensions during the distribution

Challenges

The greatest challenge was the large number of people affected and the insufficient funds to assist all of them



Multi Purpose Cash

Budget: CHF 183,361

Targeted Persons: 9,000

Assisted Persons: 10,445

Indicators

Title	Target	Actual
Number of households reached with cash transfer	1,500	1,500
Percentage of households assisted where basic needs are reached at 80%	90	100

Narrative description of achievements

A total of 1,500 heads of household, including 79.9% men and 20.1% women, received assistance in cash transfers. This corresponds to 10445 people reached in households, including 5254 men and 5191 women who were reached by the DRC Red Cross intervention. No security incidents were recorded during the process, thanks to the close involvement of community members and volunteers. As part of the process, 160 volunteers and 16 supervisors were trained in cash transfer. This enabled them to register the families affected in the



communes targeted by the operation. Then, 1,500 heads of the most vulnerable households were selected according to defined criteria. Community leaders were involved in the process, and awareness-raising sessions on cash transfer assistance were organized for community members. At the beginning of the operation, the DRC Red Cross carried out a detailed assessment including a market analysis to identify the priority needs of community members. It was confirmed that the use of multi-purpose cash transfer was the best approach to respond to immediate multi-sectoral needs and support the resilience of disaster-affected community members. Following humanitarian assistance, a post-distribution monitoring survey showed that 100% of heads of households interviewed expressed satisfaction after receiving the cash transfer. According to the majority of respondents, it helped them to cover their most urgent needs. However, the majority of respondents noted that the time between registration and distribution was considered long (over 1 month). In addition, 82% of respondents confirmed that they had been clearly informed about the cash transfer process and other Red Cross interventions (distribution of aquatabs, tarpaulins, mosquito nets).

Lessons Learnt

The National Society should secure better contracts with Financial Services Providers (FSP) to avoid delays in further operations.

Challenges

- The NS lost a lot of time trying to secure a FSP that could work in Kinshasa. They had a contract with a first FSP in another province, not Kinshasa. The negotiations did not allow the NS to extend that same contract to Kinshasa. They then reached out to a second FSP in Kinshasa, but the negotiation was not successful either. Their contract with a third FSP did not cover Cash Transfer, however negotiations enabled it to include Cash Transfer and carry out the activity.
- Due to the delays caused by the search of another FSP, the Surge CVA mission ended before the distribution took place.



Budget: CHF 42,063

Targeted Persons: 9,000

Assisted Persons: 71,471

Indicators

Title	Target	Actual
Percentage of community members who agree that they have adequate information about the disease/epidemic and means of protection	70	80
Number of households reached with health promotion	1,500	2,000
Number of people reached by hygiene activities and community engagement	9,000	71,471

Narrative description of achievements

The DRC Red Cross provided first aid and psychosocial support from the beginning of the disaster. A total of 160 volunteers and 16 supervisors were trained in PSS and EpiC (Epidemic Preparedness in Community). These volunteers, in collaboration with local Red Cross committees, contributed to the evacuation of the injured to the nearest hospitals and the transport of bodies to morgues. Their capacities were strengthened by the purchase of 48 first-aid kits distributed among the 16 targeted communes of Kinshasa. In addition, a total of 3,000 insecticide-impregnated mosquito nets were distributed to 1,500 households, at a rate of 2 per household. Volunteers carried out health promotion activities to prevent cholera, water-borne and vector-borne diseases, as well as acute respiratory infections and pneumonia caused by the destruction of shelters. Health education sessions for community members were organized through messages broadcast by volunteers and through printed messages. In all, 71,471 people were made aware of good hygiene practices throughout the operation. Awareness-raising activities were not limited to the people affected, as all the populations living in the vicinity of the affected areas benefited from the awareness-raising activities carried out by Red Cross volunteers.



Lessons Learnt

Providing municipal committees with first aid materials has been beneficial for the community, allowing members to be proactive in relief actions in their areas.

Challenges

Insufficient number of first aid kits compared to the number victims.



Water, Sanitation And Hygiene

Budget: CHF 41,062

Targeted Persons: 9,000

Assisted Persons: 71,471

Indicators

Title	Target	Actual
Number of households receiving sanitation	1,500	1,500
Number of households benefiting from aqua tabs	1,500	1,500
Percentage of households sensitized that have integrated prevention and protection messages	80	80
Number of households sensitized through door-to-door	1,500	1,500

Narrative description of achievements

In the beginning of the operation, 160 volunteers and 16 supervisors were trained. The training focused on three areas: awareness-raising techniques, communication techniques, water, hygiene, sanitation, disinfection and distribution. After training, volunteers were divided into teams made up of 10 volunteers and 1 supervisor per municipality. Disinfection equipment was provided to them. They carried out environmental sanitation during 4 weeks and also contributed to the sanitation of 1,500 households and latrines. Aquatabs were distributed to 1,500 households. Each household received 2 boxes of aquatabs (1 box contains 5 packs of 10 tablets). Then they carried out awareness-raising activities (home visits and mass awareness-raising) to promote hygiene. The main themes include environmental and personal hygiene, and the use of local products for sanitation. A total of 1,500 households were reached by the home visit activities. Overall 71,471 people were reached with awareness-raising activities during the operation.

Lessons Learnt

The participation of beneficiaries in awareness-raising activities, sanitation and the distribution of kits facilitated the work of volunteers in the community and in households.

Challenges

No major challenges noted.



Protection, Gender And Inclusion

Budget: CHF 0

Targeted Persons: 9,000

Assisted Persons: 71,471



Indicators

Title	Target	Actual
Number of prevention sessions on GBV/PSEA	16	16
Number of volunteers trained on PGI/PSEA	160	160

Narrative description of achievements

A total of 160 volunteers and 16 supervisors were trained in Protection, Gender and Inclusion to be able to understand and address related feedback as well as provide the appropriate message on Prevention of Sexual Exploitation and Abuse (PSEA) and protection related issues. The operation's coordination team ensured that sensitization reached both men and women. The appropriate sensitivity and community inclusion was applied in the intervention, include consideration of specific vulnerabilities to the selection criteria. Then the documentation and referral of five cases of GBV requiring an appropriate response were carried out. 16 sessions on prevention and protection against sexual exploitation and abuse (PSEA) were held by volunteers in public places, markets, schools, terraces, churches and health centers.

Lessons Learnt

The participation of community members in all stages of the response was beneficial and contributed to the success of community actions (sanitation, etc.).

Challenges

No challenge in this sector



Community Engagement And Accountability

Budget: CHF 13,955

Targeted Persons: 9,000

Assisted Persons: 71,471

Indicators

Title	Target	Actual
Percentage of collected feedback that has been processed	100	80
Number of feedback collected	500	430
Number of local leaders committed to community outreach	160	160
Number of volunteers trained on CEA	160	160
Number of volunteers mobilized for community engagement activities	160	160

Narrative description of achievements

A total of 16 supervisors and 160 volunteers were trained to implement Community Engagement and Accountability (CEA) activities. These volunteers were also in charge of raising awareness among disaster victims about the activities carried out by the Red Cross and their role as community members. The DRC Red Cross created spaces for discussion with members of the targeted communities through 24 discussions groups. In addition, there were regular interactions with 160 community leaders to gather their ideas and concerns. Close communication and information sharing was established by volunteers with community members during home visits, mass awareness



sessions before distribution activities and with community leaders. A total of 430 community feedback were collected and processed. Most of these were questions that volunteers had to answer during home visits or in Red Cross community offices. The main comments were message of thanks to the Red Cross, request for food aid, request for financial aid for those most affected.

Lessons Learnt

The involvement of community leaders is a key to the success of our actions and a guarantee of their participation.

Challenges

No major challenges noted.



Secretariat Services

Budget: CHF 21,825

Targeted Persons: 1

Assisted Persons: 1

Indicators

Title	Target	Actual
Number of surge deployed	1	1

Narrative description of achievements

IFRC support in terms of technical guidance and monitoring was mainly provided by the presence of Surge/cash and the monitoring of the program manager. The Surge CVA was deployed for a total duration of 3 months on the operation.

Lessons Learnt

Deploying a surge for less than the DREF implementation period does not allow the Red Cross Society to carry out activities and finalize them within the initial timeframe.

Challenges

End of contract for surge/Cash deployed on the operation prior to the planned cash distribution for which he was to provide support.



National Society Strengthening

Budget: CHF 32,007

Targeted Persons: 352

Assisted Persons: 180

Indicators

Title	Target	Actual
Number of volunteers mobilized and supported	160	160



Narrative description of achievements

A total 160 volunteers, 16 supervisors and 4 branch staffs were mobilized under the supervision of the NDRT WASH and surge which cash technical knowledge contributed to strengthen the DRC Red Cross cash readiness. Minimum 4 NS staffs were fully involved supporting the intervention all along the process from HQ to branches. The team deployed under this operation has benefit of experience on disease surveillance and prevention, first aid and PSS, assessment technique briefings, WASH trainings, CEA. The teams in the local Red Cross branches were all at their first experience of cash transfers, as well as the new cash transfer focal point. However, he was regularly supported by the CVA surge deployed by the IFRC, and then received training as part of the Echo PPP program. This training on CALP (Cash Learning Partnerships) 2nd level cash transfer programs took place in the DRC from June 12 to 16. The aim was to build the capacity of 31 National Society and PNS staff and volunteers involved in the planning, implementation, monitoring and evaluation of cash transfer programs.

Lessons Learnt

- As the late payment of volunteer motivations is causing a lack of involvement and delaying activities, this should be better planned.
- It is necessary to set up a monthly financial monitoring meeting with the NS to avoid reporting delays
- National Society (NS) should provide financial reports on time to speed up funds transfers
- For subsequent operations the NS should request support from finance surge or staff to collect supporting documents as the operation is being implemented, not at the end.

Challenges

- Insufficient working tools for volunteers (boots, raincoats, means of communication, etc.) because the response to the disaster required more volunteers at the beginning.
- The 1st part of the funds (80%) was transferred to the NS, but the remainder (20%) was not transferred on time due to delays in reporting on the first transfer. This caused delays in the payment of volunteers.



Financial Report

DREF Operation

FINAL FINANCIAL REPORT

MDRCD039 - DR Congo - Floods in Kinshasa

Operating Timeframe: 28 Dec 2022 to 30 Jun 2023

Selected Parameters			
Reporting Timeframe	2022/12-2024/03	Operation	MDRCD039
Budget Timeframe	2022/12-2023/06	Budget	APPROVED

Prepared on 29/Apr/2024

All figures are in Swiss Francs (CHF)

I. Summary

Opening Balance	0
Funds & Other Income	398,745
DREF Response Pillar	398,745
Expenditure	-329,654
Closing Balance	69,091

II. Expenditure by planned operations / enabling approaches

Description	Budget	Expenditure	Variance
PO01 - Shelter and Basic Household Items	64,472	187	64,285
PO02 - Livelihoods			0
PO03 - Multi-purpose Cash	183,361	155,199	28,162
PO04 - Health	42,063	38,620	3,443
PO05 - Water, Sanitation & Hygiene	41,062	83,081	-42,020
PO06 - Protection, Gender and Inclusion			0
PO07 - Education			0
PO08 - Migration			0
PO09 - Risk Reduction, Climate Adaptation and Recovery		18,765	-18,765
PO10 - Community Engagement and Accountability	13,955	-9,989	23,944
PO11 - Environmental Sustainability			0
Planned Operations Total	344,913	285,864	59,049
EA01 - Coordination and Partnerships			0
EA02 - Secretariat Services	21,825	6,176	15,648
EA03 - National Society Strengthening	32,007	37,614	-5,607
Enabling Approaches Total	53,832	43,790	10,042
Grand Total	398,745	329,654	69,090

[Click here for the complete financial report](#)

Please explain variances (if any)

DREF allocation to this intervention was CHF 398,745. Expenditure reported at the end of the intervention is CHF 329,654, representing 83% of the budget. A balance of CHF 69,091 (17% of the funding received) will return to the DREF pot. Financial report is attached with the National society narrative report as per the fund transfer modality.

The variances (+/-10%) are explained below:

The under-consumption in many lines is due to the fact that the last instalment of funds was not transferred to the SN as they submitted

the justification for the 1st instalment late. The SN's request for reimbursement via the 2nd transfer tranche included administrative costs, bank charges some fees like per diems of the SN volunteers/supervisors that had not been paid in full. The reimbursement was not possible because the IFRC's administrative and financial procedures no longer allowed it, as the supporting documents were submitted by the SN more than 3 months after the end of the operation when the MoU had already expired. This mainly applies to Relief items, Construction, Supplies (83%), Workshops & Training (59%), Indirect Costs (83%)

- Personnel (82%): The CVA surge was initially budgeted for 1 month, but given the needs of the operation its contract was completed with an additional 2 months, hence the excess expenditure on international staff line. On the other hand, the under-consumption under volunteers and NS staff lines are due to the fact that it was only partially payed as explained above.
- Logistics, Transport & Storage (6%): The operation did not require additional transport expenditure, as 2 vehicles already made available to the SN as part of another project were also used for the DREF operation in Kinshasa.
- Consultants & Professional Fees (0%): Translation fees were not used as documents were translated by IFRC staff at the Kinshasa cluster office.
- General Expenditure (329%): This over-consumption is explained by the fact that most of the costs here had been underestimated compared with the reality on the market. Mainly because of inflated market prices.



DREF Operation

Selected Parameters			
Reporting Timeframe	2022/12-2024/03	Operation	MDRCD039
Budget Timeframe	2022/12-2023/06	Budget	APPROVED

FINAL FINANCIAL REPORT

Prepared on 29/Apr/2024

All figures are in Swiss Francs (CHF)

MDRCD039 - DR Congo - Floods in Kinshasa

Operating Timeframe: 28 Dec 2022 to 30 Jun 2023

I. Summary

Opening Balance	0
Funds & Other Income	398,745
DREF Response Pillar	398,745
Expenditure	-329,654
Closing Balance	69,091

II. Expenditure by planned operations / enabling approaches

Description	Budget	Expenditure	Variance
PO01 - Shelter and Basic Household Items	64,472	187	64,285
PO02 - Livelihoods			0
PO03 - Multi-purpose Cash	183,361	155,199	28,162
PO04 - Health	42,063	38,620	3,443
PO05 - Water, Sanitation & Hygiene	41,062	83,081	-42,020
PO06 - Protection, Gender and Inclusion			0
PO07 - Education			0
PO08 - Migration			0
PO09 - Risk Reduction, Climate Adaptation and Recovery		18,765	-18,765
PO10 - Community Engagement and Accountability	13,955	-9,989	23,944
PO11 - Environmental Sustainability			0
Planned Operations Total	344,913	285,864	59,049
EA01 - Coordination and Partnerships			0
EA02 - Secretariat Services	21,825	6,176	15,648
EA03 - National Society Strengthening	32,007	37,614	-5,607
Enabling Approaches Total	53,832	43,790	10,042
Grand Total	398,745	329,654	69,090

DREF Operation

Selected Parameters			
Reporting Timeframe	2022/12-2024/03	Operation	MDRCD039
Budget Timeframe	2022/12-2023/06	Budget	APPROVED

FINAL FINANCIAL REPORT

Prepared on 29/Apr/2024

All figures are in Swiss Francs (CHF)

MDRCD039 - DR Congo - Floods in Kinshasa

Operating Timeframe: 28 Dec 2022 to 30 Jun 2023

III. Expenditure by budget category & group

Description	Budget	Expenditure	Variance
Relief items, Construction, Supplies	242,750	200,897	41,853
Shelter - Relief	46,697		46,697
Clothing & Textiles	14,009		14,009
Water, Sanitation & Hygiene	23,155	62,114	-38,959
Medical & First Aid	4,483		4,483
Teaching Materials	4,277		4,277
Cash Disbursement	150,129	138,783	11,346
Logistics, Transport & Storage	14,196	825	13,371
Distribution & Monitoring	6,818		6,818
Transport & Vehicles Costs	7,378	825	6,553
Personnel	82,907	67,728	15,179
International Staff	7,471	16,979	-9,507
National Society Staff	31,305	19,845	11,461
Volunteers	44,131	30,905	13,225
Consultants & Professional Fees	1,868		1,868
Professional Fees	1,868		1,868
Workshops & Training	25,011	14,764	10,246
Workshops & Training	25,011	14,764	10,246
General Expenditure	7,677	25,320	-17,643
Travel	3,736	960	2,776
Information & Public Relations	448		448
Office Costs	411	865	-454
Communications	2,802	2,970	-168
Financial Charges	280	3,250	-2,970
Other General Expenses		17,276	-17,276
Indirect Costs	24,337	20,120	4,217
Programme & Services Support Recover	24,337	20,120	4,217
Grand Total	398,745	329,654	69,090

Contact Information

For further information, specifically related to this operation please contact:

National Society contact: Grégoire MATEO, President of the DRC Red Cross, presidentnational@croixrouge-rdc.org, +243822388209

IFRC Appeal Manager: Mercy LAKER, Head of Delegation, mercy.laker@ifrc.org

IFRC Project Manager: Zeade Leonard NIOULE, Program Coordinator, Leonard.NIOULE@ifrc.org

IFRC focal point for the emergency: Zeade Leonard NIOULE, Program Coordinator, Leonard.NIOULE@ifrc.org

Media Contact: Susan Nzisa Mbalu, Communications Manager, susan.mbalu@ifrc.org, +254733827654

[Click here for reference](#)

