

www.ifrc.org  
Saving lives,  
changing minds.

# Emergency appeal Sudan: Complex Emergency

 International Federation  
of Red Cross and Red Crescent Societies

Revised Emergency Appeal n°  
MDRSD016

**277,887 people to be assisted**  
**CHF 3,096,686 Revised budget**

Appeal initially launched **16 May 2013**

Revision n° 4 issued **12 May 2015**

**Ends 30 November 2015**

This revised Emergency Appeal decreases the budget to a total of **CHF 3,096,686** (from CHF 5.3m) for a total of **277,887 beneficiaries**, and **extends** the operation for an additional **six months**. This revision enables the IFRC to support the **Sudanese Red Crescent Society (SRCS)** to address remaining unmet needs under the previous plan and to meet new or increasing needs arising from recent population movement's (some **64,033 new refugees**) arriving to camps and communities in the 4 states of Blue Nile, Khartoum, White Nile and South Kordofan. The operational focus is on the sectors of **health and care, water, sanitation, and hygiene promotion, shelter and settlement (including basic household items), food security, nutrition, and livelihoods, restoring family links, and National Society capacity building.**

Factors that have determined the approach to this revised Appeal include: the formulation of the initial plan; changes in the operating context; the actual expenditures to date and remaining funds to be expended with budget lines adjusted accordingly to align with current implementation rates; and needs covered by other partners. [Click here for the revised Emergency Plan of Action \(EPoA\)](#)

## The disaster and the Red Cross and Red Crescent response to date

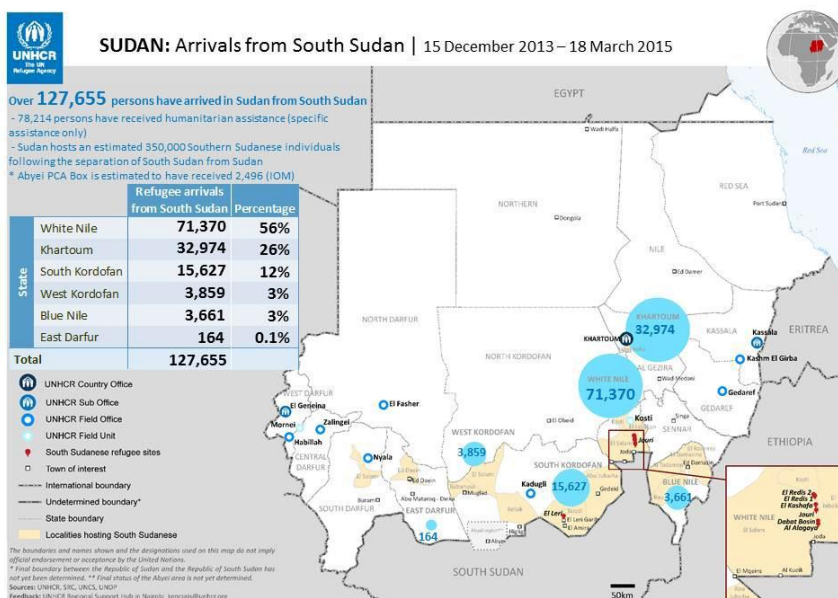
**May 2013:** Emergency Appeal initially launched for CHF 3.7m for eight months to assist 150,000 beneficiaries.

**November 2013:** 6-months operation update extended the appeal timeframe from eight to 15 months (until end August 2014).

**May 2014:** Operations update n° 3 issued.

**May 2014:** Appeal revision n° 3 launched for CHF 5.3m extending the timeframe from 15 to 24 months (until end May 2015).

**May 2015:** Appeal revision n° 4 launched for CHF 3m, extending the timeframe 6 months (until November 2015).



## The operational strategy

Since 2013, Sudanese Red Crescent Society (SRCS), with the support of the International Federation of Red Cross (IFRC) has continued to respond to the needs of vulnerable communities affected by complex emergencies arising from internal displacements, floods, outbreak of diseases, and conflict. With the ongoing conflict in South Sudan and the deterioration in the overall environment for civilians (including growing food insecurity), there has been an upsurge in the number of weekly arrivals following the end of the rainy season. According to the UN High Commissioner for Refugees (UNHCR) data (2015), on average 1,200 new arrivals are registered every week and it is expected that this trend will continue throughout 2015. As of January 2015, the number of South Sudanese refugees numbered 126,000, and it is anticipated that up to 196,000 refugees will have sought safety in Sudan by the end of 2015. In addition, Darfur remains high on the humanitarian agenda due to an upsurge of internal conflict, while several other humanitarian situations are on-going in Sudan such as fighting in parts of Blue Nile and South Kordofan states, food insecurity and poor nutrition indicators in several parts of Sudan including Eastern Sudan, all requiring the humanitarian attention. By the end of February 2015 over 5.4 million people were estimated to be in need of humanitarian assistance countrywide as a result of the various complex and protracted nature of various emergencies.

SRCS is one of the main humanitarian actors with access to majority of affected population in the country. Due to its nation-wide presence, SRCS maintains good collaboration with various UN agencies and the government. Based on this, this revised appeal is intended to support SRCS to respond to the increasing needs in the camps and settlements due to the arrival of new refugees from South Sudan and of new IDPs. The operational strategy and emergency plan of action for the revised appeal has been developed by SRCS during a three day consultative meeting in Khartoum with implementing branches and technical staff from the 4 states, as well as IFRC country and regional operations staff. Recommendations and findings from a joint field monitoring visit conducted on 28-30th March 2015 by the SRCS and Swedish Red Cross have been included in the revision.

SRCS plans are also developed to benefit both displaced populations as well as host communities. This is aimed at increasing acceptance of refugees in host communities and reducing risks of tension with the host community with whom resources are shared. SRCS will provide services to affected populations in reception centres and settlement locations. All organizations that maintain contract agreements with the SRCS will continue to work together to cover the needs of the returnees. Assistance in coordination with relevant Government agencies will be given to the relocation of new arrivals in White Nile State. SRCS intends to provide RFL services (telephone calls) and basic psycho social support (PSS) through five child-friendly spaces (3 in White Nile, 1 in South Kordofan, and 1 in Khartoum state).

Interventions have been designed based on Sphere Standards, and the HIV/AIDS component will be integrated into health education activities, including information on accessing counselling services and medication.

### Needs assessment and beneficiary selection

The 2014 Strategic Response Plan prepared by the Office for the Coordination of Humanitarian Affairs (OCHA) for Sudan estimates that a total of 6.9 million people, representing 17% of Sudan's total population, will be in need of some form of humanitarian assistance in 2015. This includes 127, 655 refugees from South Sudan in the targeted states for the length of the revised appeal.

Separating IDPs from refugees in this complex environment has proved to be challenging as the socio-economic needs of both groups have been nearly identical. SRCS activities will therefore target all vulnerable groups. The revised appeal aims to expand the ongoing activities to reach additional people and complete some outstanding activities in health, water, sanitation, and hygiene promotion that could not be implemented due to a number of operational challenges. Recent assessments reveal a significant risk of fire hazard in the refugee camps, particularly in White Nile State due to the source of wood as cooking fuel and the fact that all houses are built of grass. The current hot and dry weather conditions increases the risk of fires spreading widely, and the plan reflects activities to support interventions in this area.

With ICRC having scaled-down as an operational actor in Sudan, there is a growing gap in restoring family links (RFL) in the 4 targeted states. This appeal will therefore cover some of these gaps in the targeted States.

**Table 1: Estimated target number of beneficiaries per state and SRCS branches**

State	Number of target beneficiaries
White Nile	70,654 (62,654 camp, 8,000 host )
South Kordofan	74,433 South Sudanese and IDP's
Blue Nile	26,800 South Sudanese and IDP's
Khartoum	106,000

Total	277, 887
-------	----------



## Coordination and partnerships



The Movement Coordination Agreement signed by the SRCS, IFRC, and ICRC in 2012 will be renewed in 2015. The SRCS also has a partnership framework agreement with ICRC. Three types of coordination meetings are currently in place in Sudan:

- Movement Platform is taking place at strategic level (SRCS Secretary General with IFRC and ICRC Heads of Delegation),
- Movement Task Force at operational level (all movement partners)
- Technical Ad-Hoc Committees within each movement component subject to discussion and includes bilateral meetings.

### Overview of non-Red Cross and Red Crescent actors

The National Society participates in various coordination mechanisms, including coordination meetings led by the Government and the United Nations. The IFRC provides support to SRCS through information sharing and communication.

At the federal level, the National Council of Civil Defence is responsible for natural disaster management, while the Humanitarian Aid Commission (HAC), the technical arm of federal and state government, is responsible for the coordination of humanitarian activities and management of disasters. At the sub-state, level emergency committees responsible for technical coordination and management of disasters.

### Proposed sectors of intervention

#### Areas common to all sectors

**Outcome 1: The quality of the operation is ensured and documented by participatory in-depth needs assessments and accountability measures.**

**Output: The management of the operation is informed by a comprehensive monitoring and evaluation system which will enhance branch capacity to report on the operations.**

#### Activities planned:

- Rapid and detailed assessment of the situation, contributing to inter-agency multi-sectorial assessment and in-country coordination
- Training 180 volunteers on rapid assessment and field data collection and analysis in the 4 States
- Joint monitoring of the operations by SRCS and IFRC
- Coordination and engagement with key stakeholders jointly by SCRS and IFRC
- Planning, monitoring, evaluation, and reporting training of project staff in operational branches in targeted branches
- Training of trainers (TOT) course in community mobilization
- Support to quarterly meetings with SCRS headquarters and targeted branches
- Conduct lesson learned workshop with targeted branches and National Society staff
- Undertake external evaluation and final evaluation of the emergency operation
- Exit strategy developed for operational areas and branches



## Health & care

**Outcome 1: Improved health situation in four targeted States through the provision of basic health services including First Aid among host community, IDPs and refugees.**

**Output 1.1: Emergency health care is provided to the affected population in four targeted states, through first aid services and referrals to appropriate health facilities.**

#### Activities planned:

- Training of 200 volunteers (first aid, epidemic control, social mobilization health promotion ,vector control in targeted states and diarrhoeal cases)
- Deployment of 8 mobile clinics
- Rehabilitation of 2 health centres in Khartoum
- Secondment of 2 medical personnel per unit and operation of for 8 mobile clinics for 12 months.
- Secondment of 2 medical personnel per unit and operation for 11 PHC clinics for 12 months
- Procurement and distribution of 630 First Aid kits.
- Procurement and deployment of 6 international emergency health kits (IEHK).
- Procurement of large tents for temporary clinic or communal shelter during emergencies.
- Provision of first aid services.
- First Aid in emergencies refresher training.
- Training course in IMCI 30 medical staff (2 course)
- Training course in infection prevention in emergency settings for 70 medical staff
- Training course in nutritional assessment for 50 volunteers
- MISP training in 4 states for 20 staffs in health facilities/mobile clinics in each state.

**Output 1.2: The resilience of the community is improved through better health awareness, knowledge and behaviour**

- Printing of IEC materials with Public Health Messages on glossary papers.
- Training volunteers on fire awareness.
- Deployment of staff/ volunteers for public health campaigns in affected states.



## Water, sanitation & hygiene promotion

**Outcome 1: Reduced risk of waterborne disease and among affected population by the provision of safe drinking water, safe sanitation and an appropriate hygiene.**

**Output: Improved access to safe water, sanitation and improved hygiene awareness and behaviour for 46,666 people in 4 states.**

**Activities planned:**

- Training and mobilisation of 200 volunteers
- Facilitate community cleaning campaigns in 26 communities
- Rehabilitation of 4 purification units, 3 water systems and 30 hand pumps
- Hygiene promotion campaign for 46,666 (280 hygiene awareness sessions and 8,500 home visits)
- Procurement of water tanks (10) and bladders (4) for water storage and distribution during emergencies
- Procurement of vector control equipment and insecticide
- Procurement and distribution of hygiene kits.
- Procurement of volunteers Protection Kits
- Procurement of insecticide-treated mosquito bed nets
- Rehabilitation of Improved Ventilated Pit (VIP) latrines
- Construction new of Improved Ventilated Pit (VIP)
- Construction of 42 Communal latrines
- Printing of IEC materials with WASH messages
- Maintenance and management of emergency water treatment unit (including supply of chemicals)
- Rehabilitation of hand pumps
- Training and equipping hand pump mechanics
- Procurement of water chemicals for 2 purification units for 3 months.
- Procurement and distribution of water purification tablets
- Clean-up campaigns
- Conduct 3 water chlorination trainings in each state targeting 60 WASH volunteers
- Refresher training on PHAST-ER

## Shelter and settlements (and household items)

**Outcome 1: Vulnerability is reduced among host community, IDP's, and refugees through the provision of relief assistance (non-food items) to 46,314 households (277,887 beneficiaries), in Khartoum, Blue Nile, South Kordofan and White Nile States.**

**Output: Four targeted States receive essential non-food items**

**Activities planned:**

- Procurement and distribution of NFIs targeting 5,000 households, complementing UNHCR shelter support for the displaced.
- Transportation of NFIs from Khartoum to targeted states.
- Refresher training of volunteers and staff on relief operation and distribution.
- Deployment of staff and volunteers for the distribution of relief items to beneficiary population in 4 states.
- Procurement of fire extinguishers
- Training course in fire extinguishing

## Food security, nutrition and livelihoods

### Needs analysis

SRCS, in cooperation with WFP, will provide food aid for the vulnerable people in the affected areas. This activity started in January 2015 and planned to end in June 2015, but based on the needs assessment it was determined to continue to the end of December 2015 in White Nile State for South Sudan refugees, and from April to December 2015 in Blue Nile and South Kordofan States for IDP's affected by conflict.

### Population to be assisted

In White Nile State, 62,500 individuals have received 12,006 mt of mixed food commodities distributed by SRCS staff and volunteers from January until December 2015. In Blue Nile State, 45,954 individuals (IDPs) will receive 1,290 mt of mixed food commodities to be distributed by SRCS staff and volunteers from April – December 2015. In South Kordofan State, 58,120 individuals (IDP's) will received 9,022.5 mt of mixed food commodities to be distributed by SRCS staff and volunteers from April - December 2015.

**Outcome 1: Food insecurity of 166,574 individuals reduced through the distribution of WFP food assistance for the target population in the target states.**

**Output: 22,318.5 mt food parcels will be distributed to 166,574 individuals**

### Activities planned:

- Refreshment training for 42 volunteers in rapid assessment
- Conduct rapid needs assessment in Blue Nile, South Kordofan, and Khartoum states
- Mobilization and refreshment training for volunteer in food distribution
- Distribution of 22,318.5 mt of food commodities to 166,574 individuals in the target areas
- Distributions using the Mega V barcode system
- Conduct post monitoring beneficiary survey.

## Restoring family links

**Outcome 1: Enhanced protection for minors, women and the elderly and reunification of families in three targeted states.**

**Output: In collaboration with key stakeholders, tracing services (telecommunications) are provided in White Nile, South Kordofan and Khartoum states for missing persons and families are supported in reunification.**

### Activities planned:

- Rapid assessment on RFL needs in the 3 states
- Training on PSS for 60 volunteers in the 3 states
- Refresher training for RFL for 60 volunteers in the 3 states
- Provision of telephone service for RFL in 7 locations in White Nile State
- Creation and operation of 5 child friendly spaces receptions centres in White Nile State



## National Society capacity building

**Outcome 1: Enhanced operational capacity of SRCS to respond to emergencies in the 4 targeted States within this appeal.**

**Output: Increased capacity of SRCS staff and volunteers to respond to disaster and promote peace through in humanitarian diplomacy and strengthened partnerships.**

### Activities planned:

- 2 humanitarian diplomacy in emergency follow up trainings for SRCS staff (30 people)
- Purchase ODK/ Mega V
- Documenting lessons learnt and best practices
- Participation in national and regional fora such as the World Humanitarian Summit preparatory work
- Procurement and installation of telephone and internet equipment for the Emergency Operation Centre (EOC) at SRCS HQ.



## Budget

See attached [IFRC Secretariat budget \(Annex 1\)](#) for details.

Walter Cotte  
Under Secretary General  
Programme Services Division

Elhadj Amadou As Sy  
Secretary General

### Contact information

**For further information specifically related to this operation please contact:**

Reference documents  
Emergency Plan  
of Action (EPoA)

- **In Sudan:** Osman Gafer Abdalla, Secretary General Sudanese Red Crescent Society; Phone: +249.8.378.48.89 email: [srcs\\_sg@yahoo.com](mailto:srcs_sg@yahoo.com)
- **In Sudan:** Carl Naucler IFRC Country Representation Office; Country Representative; Khartoum; Phone: +249.9.123.04.023; email: [carl.naucler@ifrc.org](mailto:carl.naucler@ifrc.org)
- **IFRC Regional Representation:** Finnjarle Rode; Regional Representative for East Africa; Nairobi; Phone: +254.20.283.5000; Email: [finnjarle.rode@ifrc.org](mailto:finnjarle.rode@ifrc.org);
- **IFRC Africa Zone:** Daniel Bolanos; Disaster Management Coordinator for Africa; Nairobi; Phone: +254.731.067.489 Email: [Daniel.bolanos@ifrc.org](mailto:Daniel.bolanos@ifrc.org);
- **In Geneva:** Christine South; Operations Quality Assurance Senior Officer; Phone: +41.22.730.4529 Email: [christine.south@ifrc.org](mailto:christine.south@ifrc.org);
- **IFRC Regional Logistics Unit (RLU):** Ari Mantyaara Logistics Coordinator; Dubai; Phone: +971.504.584.872; Fax: +971.4.883.22.12 Email: [ari.mantyaara@ifrc.org](mailto:ari.mantyaara@ifrc.org);

**For Resource Mobilization and Pledges: IFRC Africa Zone:** Penny Elghady, Resource Mobilization Coordinator; phone: +251 11 518 6073; email: [penny.elghady@ifrc.org](mailto:penny.elghady@ifrc.org)

**For Performance and Accountability (planning, monitoring, evaluation and reporting enquiries): IFRC Africa Zone:** Robert Ondrusek, PMER/QA Delegate for Africa; Nairobi; phone: +254 731 067277; email: [robert.ondrusek@ifrc.org](mailto:robert.ondrusek@ifrc.org)

### How we work

All IFRC assistance seeks to adhere to the **Code of Conduct** for the International Red Cross and Red Crescent Movement and Non-Governmental Organizations (NGO's) in Disaster Relief and the **Humanitarian Charter and Minimum Standards in Humanitarian Response (Sphere)** in delivering assistance to the most vulnerable. The IFRC's vision is to inspire, **encourage, facilitate and promote at all times all forms of humanitarian activities** by National Societies, with a view to **preventing and alleviating human suffering**, and thereby contributing to the maintenance and promotion of human dignity and peace in the world.

The IFRC's work is guided by Strategy 2020 which puts forward three strategic aims:



**Save lives,**  
protect livelihoods,  
and strengthen recovery  
from disaster and crises.



Enable **healthy**  
and **safe** living.



Promote **social inclusion**  
and a culture of  
**non-violence and peace.**

# Sudan: Complex Emergency EPoA

18.05.2014

MDRSD016

Budget Group	Multilateral Response	Appeal Budget CHF
Shelter - Relief	423,800	423,800
Water, Sanitation & Hygiene	501,900	501,900
Medical & First Aid	448,404	448,404
Teaching Materials	6,000	6,000
Utensils & Tools	156,299	156,299
Other Supplies & Services	42,240	42,240
<b>Total RELIEF ITEMS, CONSTRUCTION AND SUPPLIES</b>	<b>1,578,643</b>	<b>1,578,643</b>
Computer & Telecom Equipment	15,500	15,500
<b>Total LAND, VEHICLES AND EQUIPMENT</b>	<b>15,500</b>	<b>15,500</b>
Storage, Warehousing	96,620	96,620
Distribution & Monitoring	27,000	27,000
Transport & Vehicle Costs	113,942	113,942
<b>Total LOGISTICS, TRANSPORT AND STORAGE</b>	<b>237,562</b>	<b>237,562</b>
International Staff	240,257	240,257
National Staff	25,616	25,616
National Society Staff	451,846	451,846
Volunteers	86,191	86,191
<b>Total PERSONNEL</b>	<b>803,910</b>	<b>803,910</b>
Consultants	18,000	18,000
<b>Total CONSULTANTS &amp; PROFESSIONAL FEES</b>	<b>18,000</b>	<b>18,000</b>
Workshops & Training	96,887	96,887
<b>Total WORKSHOP &amp; TRAINING</b>	<b>96,887</b>	<b>96,887</b>
Travel	35,264	35,264
Information & Public Relations	12,000	12,000
Office Costs	23,000	23,000
Communications	14,242	14,242
Other General Expenses	992	992
Shared Support Services	71,686	71,686
<b>Total GENERAL EXPENDITURES</b>	<b>157,184</b>	<b>157,184</b>
Programme and Supplementary Services Recovery	189,000	189,000
<b>Total INDIRECT COSTS</b>	<b>189,000</b>	<b>189,000</b>
<b>TOTAL BUDGET</b>	<b>3,096,686</b>	<b>3,096,686</b>
<b>Available Resources</b>		
Multilateral Contributions	1,433,306	1,433,306
Multilateral Contributions	1,200,000	1,200,000
Bilateral Contributions		
<b>TOTAL AVAILABLE RESOURCES</b>	<b>2,633,306</b>	<b>2,633,306</b>
<b>NET EMERGENCY APPEAL NEEDS</b>	<b>463,380</b>	<b>463,380</b>