



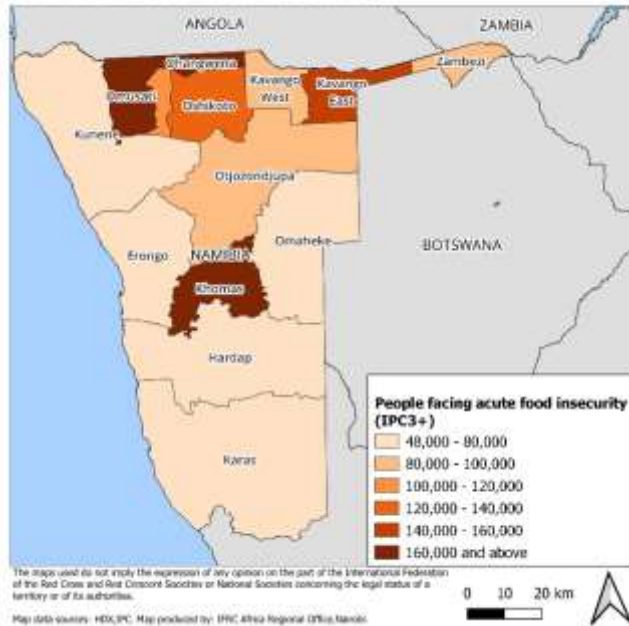
The impact of poor rainfall on farmers who are practicing early planting in Oshikoto at the end of February 2024. (Photo: NRCS)

Appeal No: MDRNA014	IFRC Secretariat Funding requirements: CHF 5 million Federation-wide Funding requirements: CHF 7 million¹	
Glide No: DR-2024-000094-NAM	People affected: 1,434,790 people	People to be assisted: 140,000 people (34,146 HHs)
DREF allocation: CHF 750,000	Appeal launched: 06/09/2024	Appeal ends: 31/08/2025

¹ The Federation-wide funding requirement encompasses all financial support to be directed to the Namibia Red Cross Society in response to the emergency. It includes the Namibia Red Cross Society's domestic fundraising requests and the fundraising appeals of supporting Red Cross and Red Crescent National Societies (CHF 2 million), as well as the funding requirements of the IFRC secretariat (CHF 5 million). This comprehensive approach ensures that all available resources are mobilized to address the urgent humanitarian needs of the affected communities.

SITUATION OVERVIEW

Namibia: Acute food insecurity



For the past decade, Namibia has faced a prolonged drought, which continues to persist and has been further exacerbated by the El Niño phenomenon. This ongoing drought significantly impacts food security and the livelihoods of vulnerable populations in the country. The Namibia Meteorological Service's Climate Bulletin for March 2024 indicated that rainfall across Namibia has been minimal, with most of the country experiencing below-normal rainfall from October 2023 to April 2024. This is due to the ongoing El Niño conditions in the central and eastern Pacific Ocean.

In Southern Africa, El Niño is linked to drought, irregular rainfall, and high temperatures, which lead to water scarcity, reduced food supply, and outbreaks of disease. These conditions worsen existing food security challenges, necessitating increased humanitarian aid, recovery of livelihoods, and resilience building.

According to the Drought Response Plan released in July 2024 by the Office of the Prime Minister, between April and June 2024, approximately 1,203,219 people in Namibia (40% of the population) were experiencing high levels of acute food insecurity (IPC Phase 3 and above) and urgently needed assistance to address food shortages and protect their livelihoods. This figure has more than doubled from the 491,000 people (19% of the population) who were projected to face food insecurity during the same period in the 2023/24 IPC report. The report indicated that the entire country (all 14 regions) was classified as being in crisis (IPC Phase 3 and above) and in need of action to protect livelihoods.

Namibia's deteriorating food security is mainly driven by the impact of El Niño on crop and livestock production, drought/dry spells/erratic rainfall, price shocks, economic decline, and unemployment. Many households depend on crop and livestock farming which relies heavily on seasonal rains. However, dry spells, and sporadic and insufficient rainfall in January and February led to crop wilting, which is expected to negatively impact the upcoming harvest. From July to September 2024, food insecurity is expected to worsen, affecting an additional 8% of the population. This will bring the total number of people facing serious food shortages to approximately 1.4 million, or 48% of the population (IPCT 3+).

The 2023/24 agricultural season saw generally poor rainfall across most regions. According to a report from the Ministry of Agriculture, Water, and Land Reform released in March 2024, the crop harvest is expected to be poor, especially in the northern regions where most crops are grown. Many households, particularly in farming areas, have exhausted their food supplies from the previous season and are now relying on the market and drought relief efforts for sustenance.

On 22 May 2024, the President of the Republic of Namibia declared a state of emergency due to the ongoing drought. Although drought relief food distribution is still ongoing in all regions, additional resources are needed to reach everyone affected, as the number of food insecure households continues to increase. Furthermore, livestock estimates indicate that the lack of adequate pastures and water shortages have adversely affected livestock production. As a result, animals in the western and eastern parts of the country are in fair to poor condition.

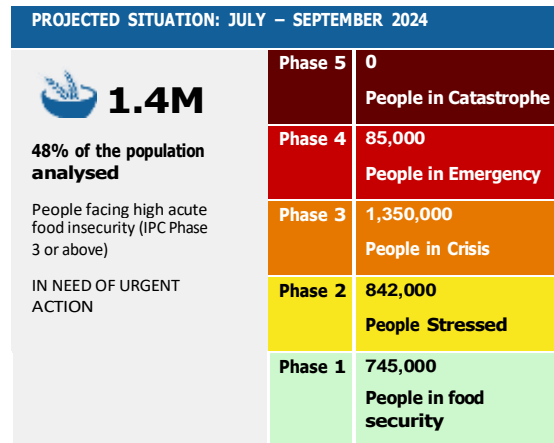


Table 1 - Overview of food insecurity population: April through September 2024




TARGETING

Through this Emergency Appeal, the Namibia Red Cross Society (NRCS) aims to support 140,000 people (34,146 households) by providing direct assistance across five regions, i.e. Kavango West, Zambezi, Omusati, Ohangwena, and Kunene. The NRCS is focusing on the population currently experiencing the most critical levels of food insecurity. The selected districts have been identified as some of the hardest hit by the ongoing drought, which has exacerbated food shortages and threatened the livelihoods of many residents. Eighty-five thousand individuals (17,000 HHs) out of the 140,000 targeted by this Emergency Appeal are among the most vulnerable, facing acute food insecurity and requiring urgent intervention to mitigate the severe impacts of the drought.

The support provided will encompass a range of assistance measures, including the distribution of food aid, water supply interventions, and livelihood protection activities. By addressing both the urgent needs and longer-term resilience, the NRCS aims to not only alleviate current suffering but also to help build the capacity of these communities to withstand future shocks. In addition to immediate relief efforts, the NRCS will work with local authorities and other humanitarian organisations to ensure a coordinated response, leveraging resources and expertise to maximise the impact of their interventions.

PLANNED OPERATION

Through this Emergency Appeal, the International Federation of Red Cross and Red Crescent Societies (IFRC) aims to support the NRCS in the response to the drought and food security crisis affecting the country. The intervention is also part of a broader sub-regional scale-up initiative planned by the IFRC to address the worsening humanitarian and environmental conditions in southern Africa. This comprehensive sub-regional effort intends to address the escalating challenges by integrating sustainable practices and improving community resilience. By doing so, it will significantly contribute to the IFRC's pan-African Zero Hunger Initiative, which seeks to eradicate hunger and ensure food security across the continent through innovative and sustainable solutions.

	<p>Pillar 1: Integrated assistance (<i>food security and livelihoods</i>)</p> <ul style="list-style-type: none"> • Multipurpose cash and voucher assistance will be provided to vulnerable affected communities for four months to address their urgent needs during the dry winter season. This support will continue until the next planting season while simultaneously focusing on developing sustainable programmes. • Provide support to those displaced and migrating due to the drought situation, including children arriving from Angola to the capital and other areas of Namibia.
	<p>Pillar 2: Health and Nutrition</p> <ul style="list-style-type: none"> • The NRCS will provide therapeutic feeding for severely malnourished children throughout the year, promote hygiene and nutrition education, provide psychosocial support to the affected families, and procure mid-upper arm circumference (MUAC) kits for measuring malnutrition in children. • The NRCS will also conduct training for staff and volunteers on MUAC, training on nutrition, as well as disease awareness campaigns for the affected communities.
	<p>Pillar 3: Water, Sanitation, and Hygiene</p> <ul style="list-style-type: none"> • The NRCS will undertake the establishment and rehabilitation of selected water sources in the identified affected communities. This initiative aims to provide reliable and sustainable access to clean water, which is critical for drinking, cooking, and sanitation. The efforts will involve the construction of new water infrastructure as well as the repair and improvement of existing water sources that have fallen into disrepair. • By ensuring a consistent and safe water supply, the NRCS is looking to enhance the health and well-being of communities, reduce the risk of waterborne diseases, and support their overall resilience against environmental challenges. This comprehensive approach will contribute to the long-term sustainability and development of the affected areas.

CROSS-CUTTING SECTORS

Risk Reduction, Climate Adaptation, Resilience, and Recovery:

- The NRCS plans to provide climate smart agricultural inputs (seeds) prior to the next planting season, along with resources for vegetable gardens, poultry farming, fodder, and licks for livestock. Training sessions will be conducted throughout to strengthen the food security capabilities and capacities of affected and vulnerable communities, including training on food conservation.

Protection, Gender, and Inclusion (PGI):

- The NRCS aims to enhance its capacity through comprehensive training for staff and volunteers in key areas such as protection, gender, and inclusion (PGI), prevention and response to sexual exploitation and abuse (PSEA), disability inclusion, child safeguarding, and sexual and gender-based violence (SGBV). This training will enable them to deliver sensitive and effective support to vulnerable populations. The NRCS plans to engage communities through informative campaigns on PGI, promoting awareness and participation in protection initiatives.
- The NRCS will establish and manage referral pathways for SGBV and malnutrition cases, ensuring timely access to necessary support services. These efforts reflect the NRCS's commitment to creating a protective environment that promotes dignity and inclusion across affected communities.

Community Engagement and Accountability

- The NRCS will work to sensitise communities on the pressing issues related to the drought. These engagements, through local community leaders, will involve the active participation of the affected communities. Through these interactions, the Red Cross aims to raise awareness about effective water conservation practices, sustainable agricultural methods suitable for arid conditions, and the importance of community preparedness and resilience-building measures. These engagements will also ensure transparency and responsiveness in the Red Cross's efforts to respond to the impacts of the drought.
- The NRCS also will actively listen to community concerns, feedback, and suggestions, integrating these insights into their programmes and strategies. By supporting a participatory approach, the NRCS will empower communities to take proactive steps in mitigating the effects of the drought, promote mutual understanding, and strengthen community cohesion in the face of climate challenges.





Enabling approaches

The sectors outlined above will be supported and enhanced by the following enabling approaches:



Coordination and partnerships

- The NRCS is closely collaborating with the Government of Namibia and has successfully negotiated and agreed on a terms of reference outlining the scope of support. Through this agreement, the NRCS will assist in areas such as needs

	<p>analysis, resource mobilisation, and addressing other gaps in the National Drought Relief Programme (led by the Office of the Prime Minister).</p> <ul style="list-style-type: none"> • Ensure the response is coordinated with various stakeholders including international organisations, such as UNICEF, and embassies to support the joint government response. • Stakeholder coordination at the national, provincial, and district levels, including other partners providing complimentary services. • The IFRC has been working closely with regional structures, including the Southern African Development Community (SADC), to ensure a coordinated regional response.
	<ul style="list-style-type: none"> • IFRC Secretariat services • IFRC support will be dedicated to ensuring that the operation is aligned with the strategic objectives of the NRCS as well as integrated into Unified Planning for long-term implementation. This involves harmonising response objectives and strategies to complement each other effectively. By doing so, the aim is to create synergies among the various initiatives, maximising their combined impact on enhancing community resilience, and reducing disaster risks. • <i>Resource mobilisation and external communications:</i> The IFRC Regional and Cluster Communications and Strategic Partnerships and Resource Mobilisation (SPRM) teams will actively promote the response efforts and seek funding support for the Emergency Appeal. These efforts are designed to raise awareness, attract donors, and support resource mobilisation. • <i>Financial management, logistics and procurement:</i> The IFRC will support the NRCS in implementing comprehensive measures to ensure the response is processed and executed efficiently and effectively. This includes setting up simple but well-organised procedures for decision-making and delivery. Robust systems will be put in place to ensure that activities, outcomes, and impacts are reported accurately and in a timely manner. • <i>Technical expertise in the thematic sectors:</i> Surge profiles will be deployed to support and enhance the management of this large-scale operation. Technical support from the IFRC will be provided to oversee the overall coordination, implementation, and monitoring of the operation.
	<p>National Society Strengthening</p> <ul style="list-style-type: none"> • The operation will contribute to the organisational strengthening of the National Society and facilitate its capacity building and development objectives.

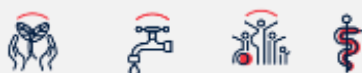
The planned response reflects the current situation and is based on the information available at the time of this Emergency Appeal launch. Details of the operation will be updated through the Operational Strategy to be released in the upcoming days. The Operational Strategy will also provide further details on the Federation-wide approach, which includes the response activities of all contributing Red Cross and Red Crescent National Societies, and the Federation-wide funding requirement.

RED CROSS RED CRESCENT FOOTPRINT IN-COUNTRY



Namibia Red Cross Society

Core areas of operation



Number of staff:	19
Number of volunteers:	14
Number of branches	11

The NRCS is a national humanitarian organisation, established by an Act of Parliament (Act 16) in 1991 following Namibia's independence, as a National Society auxiliary to the public authorities. Following its recognition by the International Committee of the Red Cross (ICRC) in 1993, the NRCS was admitted as a member of the IFRC the same year. The NRCS is recognised by the Office of the Prime Minister (OPM) as an auxiliary partner with respect to disaster risk reduction and management (DDRM) and serves on the National Disaster Risk Management Committee (NDRMC), chaired by the Secretary to the Cabinet, and on similar committees at the regional level.

IFRC Membership coordination

The IFRC and NRCS will collaborate closely to coordinate the response, ensuring efficient implementation and preventing redundancy. By encouraging coordination, the NRCS, IFRC, and its members seek to optimise their respective strengths and capabilities, thereby promoting a unified approach towards achieving the goals of the Emergency Appeal. This collaborative effort underscores their commitment to effective humanitarian action and sustainable development in the country. The IFRC is actively providing technical support and regularly monitoring the ongoing situation.

Although there are no Participating National Societies (PNSs) present in the country, the NRCS continues to engage with them as they support the response efforts remotely. For example, the Qatari Red Crescent Society has offered the National Society support by providing therapeutic feeding kits and assisting with food provision activities. The NRCS is also looking to strengthen cross-border collaboration with neighbouring National Societies in countries also affected by the drought.

Red Cross Red Crescent Movement coordination

The ICRC is not present in the country, however, the NRCS is in close contact and coordinating with the ICRC subregional office in Pretoria.

Contact information

For further information specifically related to this operation, please contact:

At the Namibia Red Cross Society:

- **Secretary General:** Dr. Glynis J. Harrison; email: glynis.harrison@redcross.org.na, phone: +264 81 122 6518
- **Operational Coordination:** Ms. Ebben Kalondo, Programmes, Resource Mobilisation, Partnerships & Communications Manager; email: ebben.kalondo@redcross.org.na, phone: +264 81 557 8832

At the IFRC:

- **IFRC Country Cluster Delegation:** Mr Kopano Masilo, Head of the Delegation; email: kopano.masilo@ifrc.org, phone: +27 66 3203886
- **IFRC Regional Office for Africa:** Rui Alberto Oliveira, Regional Operations Lead; email: rui.oliveira@ifrc.org, phone: +254 780 422276
- **IFRC Geneva:** Santiago Luengo, Senior Officer, Operations Coordination; email: santiago.luengo@ifrc.org, phone: 41 (0) 79 124 4052

For IFRC Resource Mobilisation and Pledges support:

- **IFRC Regional Office for Africa:** Louise Daintrey, Head of Strategic Partnerships and Resource Mobilization; email: louise.daintrey@ifrc.org, phone: +254 110 843 978

For In-Kind donations and Mobilisation table support:

- **IFRC Africa Regional Office for Logistics Unit:** Allan Kilaka Masavah, Head, Global Humanitarian Services & Supply Chain Management, Africa; email: allan.masavah@ifrc.org
- **For Performance and Accountability support (planning, monitoring, evaluation, and reporting enquiries) Regional Head of PMER & QA** Beatrice Atieno OKEYO, beatrice.okeyo@ifrc.org, Phone: +254732 40402

Reference



Click here for:

- [Link to IFRC Emergency landing page](#)