

6 Month OPERATION UPDATE

Kenya| Floods

Emergency appeal No: MDRKE058 Emergency appeal launched: 23/11/2023 Operational Strategy published: 20/12/2023	Glide No:
Operation update 6month Date of issue: 31/10/2024	Timeframe covered by this update: From 23/11/2023 to 19/06/2024
Operation timeframe: 23/11/2024 – 31/12/2024	Number of people being assisted: 250,000
Funding requirements (CHF): CHF 10 million through the IFRC Emergency Appeal CHF 18 million Federation-wide	DREF amount initially allocated: CHF 750, 000

To date, this Emergency Appeal, which seeks CHF18,000,000 Federation Wide is 16% funded. Further funding contributions are needed to enable the Kenya Red Cross Society (KRCS), with support from IFRC, to continue with the response efforts by providing humanitarian assistance and protecting the people affected by the floods.



KRCS staff and volunteers delivering NFs to flood affected areas in Tana River

A. SITUATION ANALYSIS

Description of the crisis

Communities in Kenya are once again facing heavy rains and devastating floods. The above-average rainfall during this March-April-May (MAM) long rains season has severely hit parts of the Lake Victoria Basin, Highlands West of the Rift Valley, Central, Northern and Southern Rift Valley, Highlands East of the Rift Valley (including Nairobi County), Northeastern, Southeastern Lowlands, and Northwestern regions. The excessive rains already cause havoc in the country where several lives were lost across the country as people tried to cross flooded rivers. People also died and sustained injuries after they were carried away by floods and struck by lightning while sheltering under trees. Properties including homes, schools and businesses were destroyed in different counties especially for areas receiving above average rainfall.

Thousands of families were also destroyed with county of Tana River having the highest displacement and the highest numbers of camps. There were also cases of landslides and mudslides in central affecting both families with even young children. Kenyan officials and humanitarian agencies have called on the population to avoid flooded areas, move to higher ground and avoid driving when it rains heavily.



KRCS conducts a rapid assessment in Turkana County Lodwar Town Photo by KRCS

The floods are exacerbating the humanitarian crisis in the country just as it emerges from the El Nino floods which occurred late 2023 when at least 178 people lost their lives, 242 were injured and thousands displaced. Thirty-eight counties out of the 47 in the country were affected by a dangerous combination of riverine floods, flash floods, and landslides. Destroyed infrastructure, health and educational services and facilities. Communities reported significant loss of livestock, crops and small businesses leading to loss of livelihood. Some families still remain in camps and have not yet been able to recover.

The 2023 floods followed by the 2024 floods, are worsening an already critical humanitarian situation in Kenya, where parts of the country are just beginning to recover from the worst drought in four decades. This prolonged drought left millions facing hunger, and the combination of low or nonexistent incomes, high commodity prices, and devastated livelihoods after five consecutive failed rainy seasons continues to drive severe food insecurity. The alternating cycles of drought and floods highlight the profound climate change challenges that Kenya, along with other countries in the Horn of Africa, is struggling to address.

Description of the crisis

El Niño hit Kenya enhanced heavy rains from October 2023 which continued into 2024. The country experienced a March to May rainy season which was well above the normal seasonal average for this season of year.

Communities in Kenya are once again facing heavy rains and devastating floods. The above-average rainfall has severely hit all parts of the Lake Victoria Basin, Highlands West of the Rift Valley, Central, Northern and Southern Rift Valley, Highlands East of the Rift Valley (including Nairobi County), North-Eastern, Lower Eastern, and Upper Eastern regions. The President of Kenya addressed the nation, and among other measures, specifically requested that humanitarian organizations mobilize adequate food and household supplies.

The peak was realized in the 2nd week of April 2024 and continued into the 3rd week of May 2024. On 3rd May 2024, adverse impacts from the rains were documented in 45 out of the 47 Counties and were degenerated into a humanitarian crisis. 478 people lost their lives as a result, 238,763 households (1,432,578 people) affected with over 117,336 households (704,016 people) displaced across the country.

The MAM rainfall also had a negative impact on food security and livelihoods of the people including destruction of businesses, loss of livestock, and destruction of acreage of crops. On livelihood, 28,859 livestock died and 92,256 acres of farmland was destroyed. Moreover, a total of 104 Health Facilities were affected, 162 roads were cut off, 180 schools affected, and 1,012 water sources destroyed. Unfortunately, most of the affected counties were the same counties that were severely impacted by the 2021-2023 drought. Compounded by the flooding in 2024, the communities faced further delays in the recovery from livelihood losses resulting from floods.

Before the October-to-December rains, the region experienced five consecutive seasons of below-average rainfall from 2020 to 2022, resulting in a severe drought effect. This led to limited access to food and water, reduced agricultural output, and diminished livelihood opportunities, impairing the population's ability to cope with future shocks.

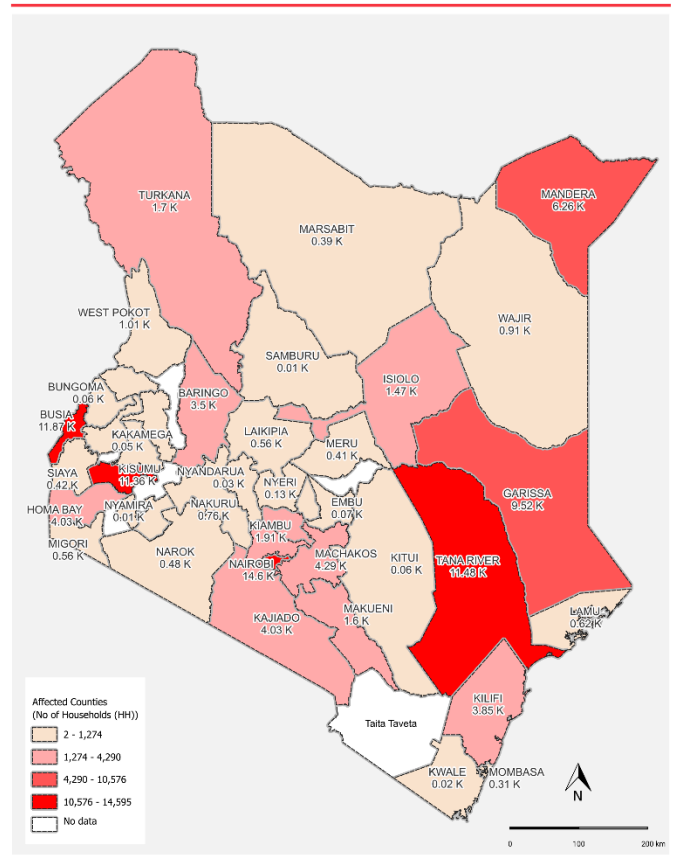
Kenya Red Cross, in collaboration with partners and National and County Government leadership, has been scaling up relief efforts for flood-affected populations, providing food and non-food items. Despite these efforts, significant gaps in emergency response and early recovery persist, preventing many households from meeting their basic needs due to the adverse effects and the large number of people at risk.

The needs range from access to food, clean and safe water, and basic medicines, especially during this high season for disease outbreaks like malaria due to standing water. Malnutrition is also a concern among vulnerable populations, including the sick, children under five, expectant and lactating women, and the elderly, due to food insecurity from the floods. As floodwaters recede, stagnant pools become breeding grounds for mosquitoes, leading to increased malaria transmission. To address these needs, a Revised Operations Strategy is being launched with a Federation-wide funding requirement of CHF 24 million. This will enable the Kenya Red Cross Society (KRCS) to expand



KENYA MAM FLOODS IMPACTS

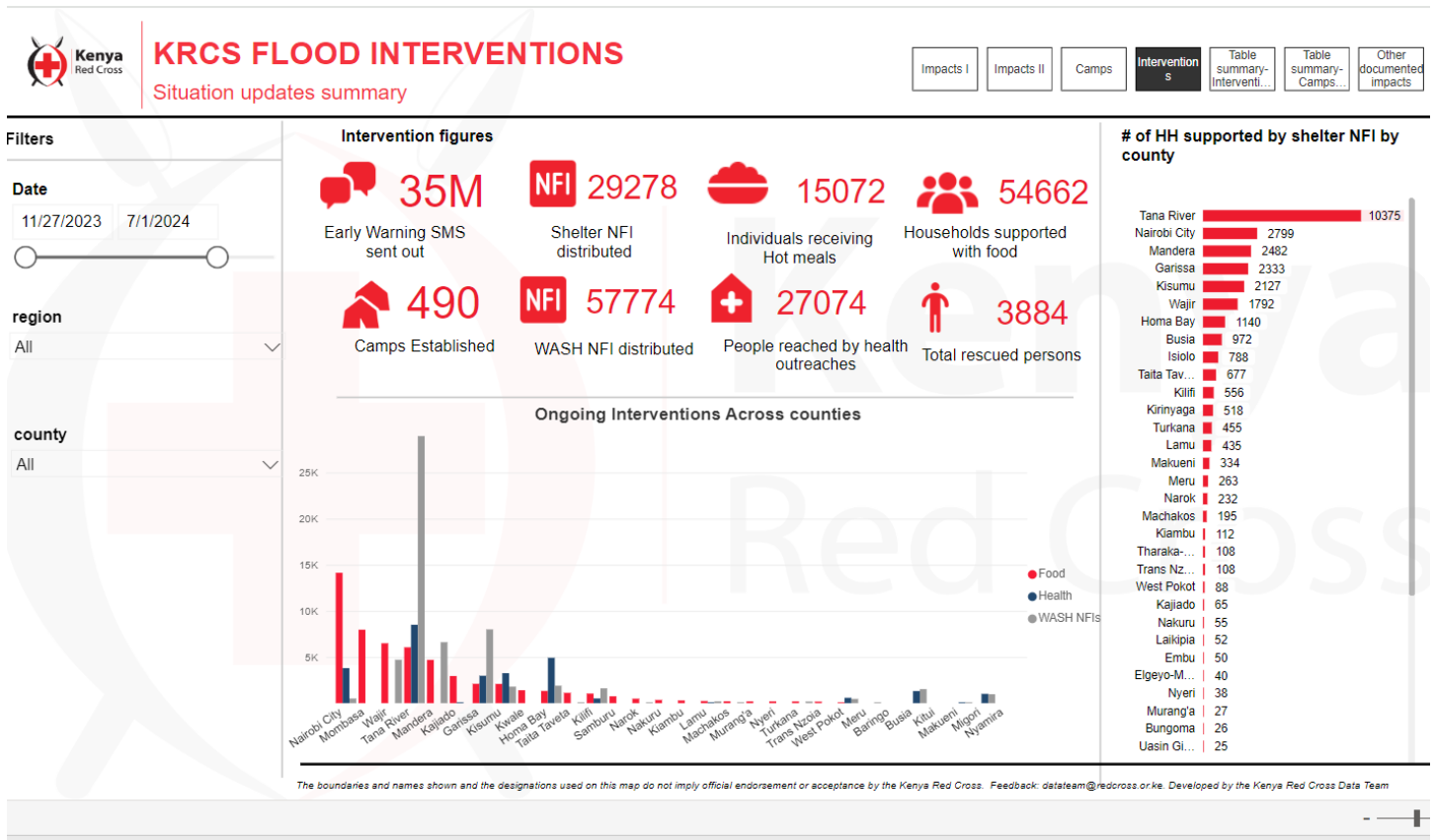
From 01 March, 2024 to 18 July 2024



Disclaimer: This map does not imply the expression of any opinion on the part of the Kenya Red Cross Society concerning the legal status of a territory or of its authorities.
Creation date: 18 July 2024 Feedback: datasteam@redcross.or.ke Website: https://www.redcross.or.ke

and scale up their lifesaving activities and emergency response to meet the needs arising from the most recent March to May floods.

Summary of response



- The KRCS deployed its Red Cross Action teams and activated Community Disaster Response teams to affected counties to ensure timely search and rescue operations. KRCS also supported **29,278 households** with Emergency **Shelter Kits**, **57,774 households with WASH NFIs**, and **54,662 households with food portions**. Additionally, the number of **chlorinated shallow wells** stood at **19,149**.
- KRCS has distributed **419,082** Aqua Tabs, **179,353** sachets of PUR for water treatment and reached out to **170,705** people with **hygiene promotion messages**. Additionally, **4,534** dignity kits have been distributed in Homabay, Garissa, Nairobi and Murang'a counties.
- KRCS has been able to issue **35 million early warning messages**, **rescued 3,884 people** from near drowning, and reached **29,278 households** with emergency shelter and essential household items.
- Seeds were distributed to six counties recovering from the drought to make use of initial rains and improve food security. This included early maturing and drought resistant seeds (maize, beans, green grams, and cow peas).
- KRCS has supported **57,774 HHs** with WASH NFIs across the country. KRCS has distributed **419,082** Aqua Tabs, **179,353** sachets of PUR for water treatment and reached out to **41,091 HHs (205,455 people)** with **hygiene promotion messages**. Additionally, **4,534** dignity kits have been distributed in Homabay, Garissa, Nairobi and Murang'a counties.
- KRCS has supported **3,129 HHs (18,774 people) with multi-purpose cash** to enable them to evacuate to safer ground and assist them in initial days while living at the evacuation centres before shelter and wash

support. Those at risk of being affected will be enrolled as well as those in other social vulnerabilities that are not in any Social Protection programs. The amount disbursed to each of the 3,129HHs was 48 CHF (Ksh 6,960), a value within the budget but also verified from a feasibility assessment and approved by the local stakeholder for 1-off transfer.

- A total of **54,662 HHs were supported with food items** across the county. Nairobi had the highest number of households who benefitted from food items including hot meals where **15 072 Households** were supported with hot meals.
- A total of **27,074 people** were reached through health outreaches across the country. Health outreaches done were based on Malaria, Non- Communicable Diseases, clinics for children, and general health of the community. The table below shows the number of people reached during the health outreaches per county.

Needs analysis

Needs analysis

Sectors	Needs
Shelter	<ul style="list-style-type: none"> - Need for the provision of emergency shelter kits to the displaced households. - Need for immediate camps set up and camp management to the household living in camps. - Need for immediate rehabilitation and reconstruction of houses fully/partially destroyed.
Health	<ul style="list-style-type: none"> - Disease surveillance and preventive activities on current disease outbreaks: Cholera, Measles, Polio and Rift Valley Fever. - Need to ensure continuous sensitization and practice of Protection Gender and Inclusion. - There is still a gap on nutrition needs across the counties.
WASH	Rehabilitation of water systems (boreholes, water pans). <ul style="list-style-type: none"> - Sensitization to the need to use safe and clean water. - Provision of water treatment chemicals at household and community level.
Livelihoods	<ul style="list-style-type: none"> - Livelihood recovery support for affected crops, livestock, farming and small businesses.
Disaster Risk Reduction	<ul style="list-style-type: none"> - Need to control the effects of floods. - Enhanced needs for early warning and early communication.

For more information refer to the [emergency appeal revision](#).

Operational risk assessment

Operational risks remain the same as reported in the published [Operations Strategy](#).


B. OPERATIONAL STRATEGY

Update on the strategy

As the flooding continues and the situation for thousands of families worsens, more support is urgently needed to provide lifesaving and emergency relief to the most vulnerable. This revised Emergency Appeal increases the Federation-wide funding requirement from CHF 18 million to CHF 24 million to enable the Kenya Red Cross Society, with the support of the IFRC, to scale-up its emergency response and early recovery activities, as well as expand its operational areas and activities. The revised appeal increases the target population from 250,000 to 500,000 people affected by the floods since November 2023. To date, in addition to the DREF allocation mentioned above, the appeal has received CHF 1.27 million through the IFRC Secretariat appeal.

C. DETAILED OPERATIONAL REPORT

STRATEGIC SECTORS OF INTERVENTION


	Shelter, Housing, and Settlements	Female > 18: 36,232	Female < 18: 36,232	CHF 2,441,000
		Male > 18: 36,963	Male < 18: 36,963	Total target: 250,000
Objective:	To meet the immediate and short to mid-term shelter needs of the affected population.			
Key Indicators:		Targets	Actual	
# of Households supported with emergency shelter and essential household items		50,000	29,278 (146,390)	
# of Households who report that the shelter solutions provided helped in their long-term recovery		85%	40%	
Priority Actions:	<p>Assessment and mobilization</p> <ul style="list-style-type: none"> KRCS conducted a Rapid assessment in areas affected to determine the magnitude of effects and what were the population priority needs within the counties. This was also supplemented by the number of KIRA assessments conducted in Wajir, Mandera, and Tana River counties. The agencies included the county government, National Drought Management Authority and other non-government institutions operating within the counties. KRCS has been mobilizing affected populations and supporting the displaced to move to the identified evacuation centres in cases where the houses are submerged or destroyed. This is being supplemented by the community leaders such as the chiefs. Targeting was done to those who have been affected and are vulnerable using the community-based criteria. KRCS will be conducting a post monitoring distribution for the cash and voucher assistance disbursements and that of in-kind distribution for both the non-food and food items. <p>Emergency shelter and essential household items</p> <ul style="list-style-type: none"> The affected houses have been provided with emergency shelter kits which include: 1 kitchen set, 2 tarpaulins, 2 foldable jerrycans, 2 blankets and 2 sleeping mats. KRCS has been able to reach 29,278 			

households across the country. The items were distributed as a full kit to the households that had lost all their items and on need basis to those that had partially destroyed items or in camps. KRCS also supported with the demonstration on how to do emergency shelter construction after the distribution of these items.

- KRCS has also supported in the setup of 8 camps in tana River for the displaced population due to floods. This is giving guidance to the population in order to ensure they are properly sheltered.

Early recovery shelter

- Based on a detailed assessment, additional support will be done through the cash and voucher assistance modality to facilitate the return of families to their place of origin as soon as is feasible. KRCS has mechanisms in place to support cash and voucher assistance before a disaster to facilitate evacuations, during the response to reduce humanitarian needs, and during recovery to ongoing support.

	Livelihoods and basic needs	Female > 18: 67,645	Female < 18: 67,645	CHF 3,213,000
		Male > 18: 69,010	Male < 18: 69,010	Total target: 250,000
Objective:		To provide the most vulnerable of the affected population with cash and in-kind support to be able to meet their basic needs.		
Key Indicators:			Targets	Actual
# of Households reached with in-kind food assistance			15,000	54,662 (273,310 people)
# of Households reached through cash assistance			15,000	3,129
# of Households reached through livestock restocking			5,000	0
# of Households reached with early maturing and drought resistant seeds			15,000	3,000
% of the targeted population whose livelihoods are restored to pre-disaster levels			85%	50%
Priority Actions:				
In-kind food				

- A total of **54,662HHs** have been supported with food items across the country. Nairobi had the highest number of households who benefitted from food items including **15,072 Households** who were supported with hot meals.
- KRCS supported in targeting registration and distribution of in-kind food donations which was bought and others through the local donors.
- There is still a need to continue procuring and distributing food rations to the affected communities and need to support the operational costs arising as KRCS receives donations. Scale-up support to reach households with food commodities, including the protection ration for households that have malnourished children and pregnant and lactating women, individuals with disabilities, or other at-risk categories.



Figure 1 Food distribution in Nairobi informal settlement (KRCS Photo).

Multi-purpose cash


- In Wajir county a whole village in Elwak was submerged; to support them to move to higher grounds KRCS provided the community with cash for transportation for them to move to higher grounds. The whole village had a total of 2,000HHs where through the vulnerability selection criteria KRCS supported **800HHs**. Each household received a total of KES3,000 with an additional KE 69 for withdrawal charges.
- In Kisumu and Homabay counties, Bala, Simbi, Lower Nyakach were submerged; KRCS provided the community with cash for transportation for them to move to higher grounds. A total of **3,129 HHS** benefitted from the cash distribution.
- KRCS with the availability of funds, has been supporting recovery programs for the communities who were most affected.
- Cash is being coordinated using the Kenya Cash Working Group which coordinates between different entities conducting cash from the national level to the county and sub counties being targeted.

Recovery livelihoods

- KRCS in its plan towards mitigating the impact of the rains targeted communities with agricultural support in counties of Kitui, Machakos, Makueni, Kwale, Kilifi and Laikipia with **early maturing and drought tolerant seeds** to take advantage of the rains. Through the Danish support, KRCS distributed seeds to **3,000 households** in Kitui, Machakos and Makueni, through the British, KRCS supported in Kwale and Kilifi and in Laikipia.
- The technical teams for the respective counties determined and selected the seeds based on the geographical conditions. The seed varieties supported based on the county advisories included maize, green grams, cowpeas, and beans. KRCS volunteers supported the sensitization.
- The following counties were targeted.

County	No of households	Type of seed
Kitui	500	Cowpeas, Green grams
Machakos	500	Maize, Green grams
Makueni	500	Maize, green grams
Kwale	500	Green grams, cowpeas
Kilifi	500	Maize, green grams
Laikipia	500	Maize, Beans

Kwale, Machakos, Kilifi and Kitui recorded the highest germination rates (90%) compared to Makueni and Kilifi. Almost half of Makueni received rains the later stopped. Kilifi and Laikipia counties recorded late germination due to delayed planting. KRCS volunteers have been monitoring the germination both remotely and physically. The counties that planted cowpeas (Kwale and Kitui) have already started using cowpeas vegetable leaves as vegetables.

	Health & Care	Female > 18: 71,821	Female < 18: 71,821	CHF 1,738,000
		Male > 18: 73,272	Male < 18: 73,272	Total target: 250,000
Objective:		The immediate risks to the health of affected populations are reduced.		
Key Indicators:			Targets	Actual
#of People reached with search and rescue			2,500	3,884
#of Counties that have conducted health assessments and risk mapping			25	17
#of Households reached with health services/hygiene promotion			50,000	41,091
#of Households provided with mosquito nets			50,000	58,037 (290,185 people)
#of People reached with mental health and psychosocial support			5,000	80,975
Priority Actions:				
Search and rescue				
<ul style="list-style-type: none"> Since the onset of floods, KRCS responded to distress calls from citizens caught unaware by the flash floods. The Aqua Rescue teams were activated and deployed as per need and worked round the clock. KRCS had Aqua Rescue Boats in the Urban areas. As the flood situation intensified the GoK came into support, and an additional three boats were procured to support the region's response to the rescue efforts. KRCS rescued a total of 3,884 people with support from the GoK, KWS, and private in-kind support of rescuers by the Savage Wilderness personnel. KRCS has reached out to 41,091HHs (205,455 people) with hygiene promotion messages in Kirinyaga, Meru, Garissa, Mandera, Busia, Homa Bay, Kisumu, Turkana, Isiolo, Nairobi, Mombasa, Kilifi, Tana River, Kajiado, Siaya, Migori and Nakuru counties. Additionally, 4,534 dignity kits have been distributed in Homabay, Garissa, Nairobi and Murang'a counties. 				
Community Health				
<ul style="list-style-type: none"> Health facilities and medical outreach sites have been rendered inaccessible due to roads being cut off, marooning of people and destruction of infrastructures. Vector breeding has also increased posing threats of vector-borne diseases such as Malaria, Dengue, Chikungunya and Yellow fever. Kenya Red Cross has been responding to immediate needs of the communities including shelter, food, access to clean and safe water and medical services. A total of 41,091HHs (205,455 people) were reached through hygiene promotion activities. 				
Cholera Kits Distribution				

- Cholera Kits provided by WHO were distributed to all the 23 prioritized counties namely, Lamu, Tana River, Kilifi, Mombasa, Marsabit, Kitui, Homabay, Kisumu, Kwale, Siaya, Migori, Busia, West Pokot, Turkana, Trans Nzoia, Bungoma, Nyandarua, Kiambu, Mandera, Garissa, Wajir, Isiolo and Kajiado.
- Highly prioritized counties are: Mandera, Garissa, Wajir, Isiolo, Kajiado, Tana River, Lamu which received a full kit comprising of both Peripheral 1.4 and Central 1.1. Lamu County is expected to receive an additional central 1.1 kit.
- KRCS distributed 8 cholera beds to Madogo and 14 to Garsen in Tana River County to support case management. Four temporal Cholera Treatment Unit (CTU) were erected in Madogo and for case management.

Vector Control

- KRCS distributed insecticide treated mosquito nets in Garissa, Lamu, Madera, Homa Bay and Tana River to **58,037 HHs**.
- Indoor Residual Spraying (IRS) was conducted to **1,274 households** in Elwak, Mandera County.
- Distributed 150 bottles of Actellic vector control chemical and 15 Knapsack sprayers to Elwak, Mandera County and 200 sachets of Fludora IRS Chemical to Tana River for indoors residual spraying. 13
- KRCS has been conducting mental health support during the medical outreaches across the camps reaching a population of **80,975 people**.


Sexual and reproductive health (SRH) and gender-based violence (GBV) prevention and response

Nutrition

- KRCS achieved significant progress in promoting Protection, Gender, and Inclusion (PGI) and addressing gender-based violence (GBV) across multiple counties. In Garissa County, **22 volunteers** were trained on PGI and GBV awareness, leading impactful efforts in four displacement camps. In Kisumu County, **25 volunteers** were trained to support GBV case identification, management, and reporting in communities and camps. In Tana River, male champions spearheaded community dialogues on family planning, GBV prevention, girl child education and safe relocation of vulnerable groups, including pregnant women.
- Psychosocial support was provided to **17 GBV victims** in Tana River, with further GBV cases managed in Nairobi and Homa Bay. KRCS also provided critical material assistance, distributing **4,134 dignity kits** in Garissa, **819** sanitary packs in Nairobi, **150** in Murang'a, and **400** dignity kits to displaced households in Homa Bay.

Mental health and psychosocial support

- KRCS through staff and volunteers has provided Mental Health and Psychosocial Support Services (PSS) to **80,975 people** across the country.

	Water, Sanitation, and Hygiene	Female > 18: 71,495	Female < 18: 71,495	CHF 1,395,000
		Male > 18: 72,940	Male < 18: 72,940	Total target: 250,000
Objective:	Immediate reduction in the risk of waterborne and water-related diseases in targeted communities.			
Key Indicators:		Targets	Actual	
#of Households provided with access to safe drinking water		50,000	16,568	
#of Households provided with emergency latrines		3,000	2,288	

#of Households reached with hygiene promotion	50,000	41,091(205,455 people)
#of Households reached with WASH household items	50,000	57,774 (288,870 people)
#of Households supported through the restoration of damaged water infrastructure once the floods subside	12,000	700

Priority Actions:

- KRCS is rolling out an extensive hygiene promotion campaign to strengthen WASH knowledge and best practices. The summary table for water treatment interventions is shown below:

County	PUR Water Treatment Chemicals (Sachets)	Chlorinated shallow well
Wajir	82,099	8,000
Mandera	66,146	1,400
Garissa	7,200	3,870
Tana River	96,070	7,900
Lamu	20,260	820
Migori	2,008	0
Homa Bay	7,173	89
Isiolo	96,000	
Total	376,956 Sachets	22,079

- To support sanitation amongst affected communities, KRCS has been providing sanitary materials to those already in Camps. Sanitation is also being done through the promotion of hygiene and through supporting communities with knowledge and demonstration on how to construct and utilize latrines. KRCS has so far provided **100 toilet slabs** to the populations in camps.

- KRCS volunteers are being mobilized and rapidly sensitized/trained on emergency sanitation. Temporary community and institutional latrines and handwashing stations have been erected where needed to ensure that persons with no access to sanitation have facilities to use. All facilities have been designed based on consultation with targeted communities, with considerations for cultural preference, safety and access for children and persons with disabilities. Damaged or destroyed latrines will be repaired or rebuilt both in institutions and in communities. All these activities are conducted concurrently with environmental and hygiene interventions, and hygiene are promoted to ensure proper disposal of solid waste, drainage of stagnant water, handwashing, vector control and other key behaviors to support the prevention of disease outbreaks.
- KRCS is distributing water treatment chemicals to affected households to minimize risk of waterborne diseases. In addition, where KRCS anticipates prolonged displacement, water treatment plants have been deployed until the communities are restored. During distribution of water treatment chemicals, KRCS is sensitizing communities on their proper use. Household water treatment chemicals are being distributed to households affected and not displaced till normal services resume. Additionally, disinfection of shallow wells and boreholes, protection and improvement of shallow wells and rehabilitation of other damaged water infrastructure. Water quality tests are being conducted before, during and after interventions to ensure availability of safe drinking water.



A shallow well submerged in Nyakach

Specific update on Water Supply Rehabilitation ERU

Operation Area - Tana River, Garissa, Mandera and Wajir.

Rehabilitation of boreholes

- A total of **101 hand pumps** have been rehabilitated through flushing, chlorination, and comprehensive repairs. In addition to these rehabilitations, the project successfully drilled a new borehole, solarized it, and extended a 2.5 km pipeline, which includes the construction of three water kiosks now serving **750 households**. The project also provided support to the Tana River Water and Sewerage Company (TAWASCO) by rehabilitating three boreholes. This rehabilitation included flushing and equipping the boreholes. Furthermore, protection walls were constructed for five boreholes, security lights were installed, and repairs to the solar system were completed. As a result of these efforts, the plant's water discharge capacity has expanded to reach five villages benefiting **1,600 households**.
- In Garissa, the replacement of pumps and extension of pipelines in Kasha has benefited **1,500 households**. Additionally, borehole drilling, civil works (including pipeline and water kiosk construction), and solarization of the system in Bulajari have provided water access to **150 households**.

Needs Assessment and Planning

- A comprehensive assessments and baseline surveys were conducted from end of February to Mid-March 2024 to gather detailed information on existing water and sanitation facilities. This included assessing open shallow wells, boreholes with hand or motorized pumps, solar pumping systems, small

water supply networks, and their overall condition. The assessment data was then used for further planning, including procurement of necessary materials and equipment.

Capacity Building and Training

- KRCS supported the Ministry of Health to conduct WASH training to **30 volunteers** (12 KRCS and 18 CHPs). These trainings were cascaded to **73 volunteers**. The training module enabled the volunteers to sensitize the communities on household water treatment and safe storage, handwashing techniques, key times, installation of local hand washing stations i.e tippy taps, water quality control through use of rapid tests kits known as Aquagenx.



HWTS ERU training by Spanish RC. Class and practical sessions. (KRCS Photo).



Borehole rehabilitation in Bondeni, TR County. Flushing, disinfection and replacement of pump parts. (KRCS Photo).



Training session on the WSR Water testing Kit. (KRCS Photo).

- A 6-day intensive capacity-building program on well design and borehole drilling supervision was held in Tana River County. This program incorporated both theoretical and practical components, allowing participants to gain valuable hands-on experience and expanding their technical expertise in this critical area. The training included a 2-day webinar followed by 4 days of practical sessions with demonstrations of borehole drilling activities and supervision techniques.
- A total of 13 WASH engineers participated/ four engineers each from South Sudan, Tanzania, Zimbabwe, and the Norwegian Red Cross Society eight engineers from KRCS and one engineer from the government.

Hygiene Promotion activities

- Hygiene promotion activities were conducted in 16 villages and 9 camps. The 30 trained/73 sensitized volunteers adopted house to house visits and community dialogues to sensitize communities on proper hygiene. The volunteers through community engagement, emphasized on the risk of contaminated water and sources of contamination, creating the risk while at the same time demonstrating the use of water treatment chemical, emphasized on safe storage, proper disposal of human excreta, general cleanliness including food hygiene and solid waste management.
- Cumulatively, **4,859 HHs** with a population of **26,471 (12,819M, 13,652F, 169 PLWD)** were reached through door-to-door sensitization and community dialogues. 34 Key community influencers were sensitized. A total of **155,840 aqua tabs** and **36,133 PUR** were distributed to beneficiaries. 25 sanitation facilities were installed in Marafa and Adele Kokane villages/ camps during the MAM rains and 12 slabs were retrieved from Marafa Camps after the rains subsided.

Water supply activities

- The WASH ERU team successfully rehabilitated 21 boreholes in Tana River County, improving access to clean water for flood affected communities.
- Water quality monitoring and testing were conducted for 25 rehabilitated hand pumps in tana river county.
- Ten (10) Water Management Committees (WMCs) were trained to ensure the sustainable management of these rehabilitated water facilities.



Water kiosk in Tana River



Hand pump under repair in Tana River



Protection, Gender and Inclusion


Female > 18: 9,912 Female <18: 9,911

Male > 18: 9,910 Male < 18: 9,910


Objective:	The operation ensures the safe and equitable provision of basic services, considering different needs based on gender and other diversity factors.		
Key indicators:	Indicator	Actual	Target
	#of People benefiting from safe and equitable delivery of basic services taking into account their needs based on gender	ongoing	250,000
	Survivors of GBV identified and referred to specialized services, including safe spaces, counselling, and medico-legal support.	21	100
	# of Staff and volunteers briefed on PGI minimum requirements	47	400

The protection of communities, especially the most risk-exposed groups, and ensuring their safety and access to opportunities, is essential to meet the needs and rights of the most vulnerable, both in emergencies and through the recovery pathway. Through this Appeal, the following activities will be undertaken. The KRCS continued to ensure that targeting is based on gender protection and inclusion minimum standards in emergencies through all sectors. Safe and equitable provision of services will be provided, with consideration of needs based on gender and other diversity factors, while sex, age, and disability disaggregated data were included in assessments and reporting. A total of 47 staff and volunteers were briefed on PGI minimum standards to equip them to support the communities with safeguarding measures. As a result, 21 GBV survivors were supported and referred for specialized services.

All sectoral teams included measures to address vulnerabilities specific to gender and diversity factors (including people living with disabilities) in their planning. All communities and families were targeted in accordance with IFRC PGI minimum standards in emergencies and specific in-country cluster and KRCS procedures.

	Risk Reduction, Climate Adaptation, and Recovery	Female > 18: 9,912	Female < 18: 9,911	CHF 123,000
		Male > 18: 9,910	Male < 18: 9,910	Total target: 125,000
Objective:		Communities in high-risk areas are prepared for and able to respond to disasters.		
Key Indicators:			Targets	Actual
# of People reached with DRR activities			25,000	39,643
# of Counties with developed and supported community plans of action			25	10
Priority Actions:				
<p>The disaster risk reduction (DRR) activities aimed to strengthen the institutional preparedness of KRCS branches and community disaster response teams in the affected counties, as well as mapping risks and mitigation strategies, including early warning and early action systems. The activities focused on strengthening the skills and capacities of branch and community disaster response teams. The Kenya Red Cross Society (KRCS), utilizing its system (RCATS and CBDRT) effectively disseminated timely flood alerts and early warning information (Risk communication) to communities in Sala Ward, Madogo Ward, Chewele Ward, Garsen Central, North, south, and Kipini west wards. A total of 39,643 people living in riverine areas that are prone to flooding were reached with DRR activities across the Country.</p> <p>The DRR information was communicated through various channels such as social WhatsApp groups, public meetings, religious institutions, and community events. The information included the need to ensure that the communities move to higher grounds, avoiding flooded areas and seasonal rivers, maintaining safe distance from downed power lines, prioritizing safe drinking water, and staying informed through local news channels.</p> <p>In collaboration with the County government and the Kenya Meteorological Department (KMD), KRCS issued early warning information, weekly rainfall forecasts, and forecasts to CMDRR and other community gatekeepers. This collaborative initiative played a crucial role in reducing the number of displacements and mortality rates.</p> <p>The counties in the Eastern region of Kenya developed community plans of action which were also developed in relation to the El Nino Contingency Plans.</p> <p>The integration of resilience approaches in the Emergency Appeal will become the natural exit strategy.</p>				

Enabling approaches

	National Society Strengthening	CHF 588,000	
Objective:		National Societies are prepared to respond effectively to epidemics/emerging crises, and their auxiliary role in providing humanitarian assistance is well-defined and recognized.	
Key Indicators:		Targets	Actual
# of Branches supported with operational support services capacity development		25	45
# of Volunteers equipped and insured for the response		400	800
Logistics support provided		1	1
Priority Actions:			
<ul style="list-style-type: none"> Strengthening of KRCS's response systems at national headquarters, regional and county levels, including capacity development for EOC, fleet and warehouse. KRCS has so far trained 800 volunteers and 105 staff in readiness to support with floods response. KRCS also strengthened the capacity of staff and volunteers for risk reduction and climate adaptation in 45 branches. Volunteer duty of care has been emphasized through appropriate management services, provision of personal protective equipment (PPE), training and accident insurance. Capacity building for youth and volunteers to ensure that they play their role in providing humanitarian assistance under good governance and youth leadership. 			

	Coordination and Partnerships		
Objective:		Technical and operational complementarity among IFRC membership, and with the ICRC, enhanced through cooperation with external partners.	
Key Indicators:		Targets	Actual
# of new external partnerships supporting the National Society in the response established.		5	10
Coordination mechanism is in place ensuring alignment and coordination with all Movement partners		1	4
Coordination mechanism is in place ensuring alignment with government, HCT, and clusters		1	12
Priority Actions:			

Membership Coordination


- IFRC has been providing technical and coordination support through Strategic Partnerships and Resource Mobilisation Unit to support the multilateral and bilateral contributions provided through the Federation-wide approach. This includes embedding an officer in KRCS.
- IFRC is providing technical and coordination support with partners operating within the country, which include the government, stakeholders, partners, and KRCS members through Partners Calls, donors' briefings, organising field trips for stakeholders and partners.

Engagement with external partners

- KRCS has been able to facilitate engagement and coordination with partner National Societies and ICRC in the design of the response, leveraging the expertise and resources available through a Red Pillar approach, and ensuring alignment with relevant external actors, including the Government's policies and programmes, development actors, United Nations agencies and non-governmental organizations (NGOs).
- The National society through the ongoing response is connecting with existing government-led mechanisms for climate and drought, social safety nets and food security, emphasizing the auxiliary role of KRCS. Implement a robust humanitarian diplomacy and communication plan, with appropriate linkages to national, pan-African and international climate and humanitarian policies.

Movement Cooperation

- The ICRC has a Regional Delegation hosted in Nairobi, which serves as a hub for operations in eastern and central African countries. In partnership with the KRCS, the ICRC supports restoring family links (RFL)/tracing, economic security, and water and habitation projects in Lamu and parts of Garissa, in addition to enhancing operational safety and security through the Safer Access Framework.

	IFRC Secretariat Services	CHF 331,000	
Objective:	Effective and coordinated international disaster response is ensured.		
Key Indicators:	Targets	Actual	
Support staff deployed to the KRCS (WSR-ERU)	3	9	
Monitoring mission – technical and with donors	5	3	
Partners call and donors briefing	3	4	
Operations updated and situation reports provided	Monthly	2	
Priority Actions:			
Strategic support:			
<ul style="list-style-type: none"> • The IFRC Secretariat is providing services and support to KRCS and PNSs present in the response, facilitating an effective Federation-wide response, with support from the Nairobi Cluster Delegation and Africa Regional Office. 			
Humanitarian Diplomacy (HD):			
<ul style="list-style-type: none"> • IFRC continues to support humanitarian diplomacy and communications plan, with appropriate links to national, pan-African, and international climate and humanitarian policies. 			

Communications:

- IFRC communications officer is supporting to provide content generation.

Planning and Monitoring:

- The KRCS's Monitoring, Evaluation, Accountability and Learning (MEA&L) unit is Monitoring the response based on the framework.
- Needs assessments continue to be provided by country level KRCS to help inform and prioritise the response.

Information Management:

- KRCS are providing regular reports through their Emergency Operations Centre (EOC). These are being used to inform the wider humanitarian sector via the KPHT monthly meetings.

Logistics and Supply Chain, Procurement:

- Both local and international procurement is being carried out in accordance with the IFRC's standard procurement procedures. International procurement is being supported by the Logistics Procurement and Supply Chain Management (LPSCM) units in Nairobi and Dubai.

Finance and Administration:


- The IFRC is providing the operation with the necessary support to review and validate budgets, bank transfers, technical assistance to the National Society regarding expense justification procedures, and the review and validation of operational invoices.

Human Resources:

- To date technical and coordination support required for this operation has been absorbed within existing Nairobi cluster capacity supported by the IFRC Africa Regional Office.
- IFRC staff supporting include operations, PRD, fleet, and comms.
- Through the global surge desk, a Water Supply Rehabilitation (WSR) Emergency Response Unit has been deployed to support WASH assessments.

Security:

Security briefings have been coordinated and provided by KRCS and IFRC (regional) security focal points. Including those for Nairobi cluster and surge field visits – all with reference to the current MSR.

	Community Engagement and Accountability	Female > 18: 9,912	Female < 18: 9,911	CHF 65,000
		Male > 18: 9,910	Male < 18: 9,910	Total target: 250,000
Objective:		Develop and deploy standardized approaches for community engagement, collection, and the use of qualitative community feedback data to better understand community perspectives.		
Key Indicators:			Targets	Actual
% of Feedback responded to and cases resolved within a month by the National Society			100%	100%
# of Volunteers trained/briefed and mobilized in support of CEA			400	430
% of community members who feel the assistance provided by the operation currently covers their urgent needs			90%	80%

# of and type of methods established to share information with communities about what is happening in the operation, including selection criteria	3	5
% of community members, including marginalized and at-risk groups, who know how to provide feedback about the response	100%	100%

Priority Actions:

- The Kenya Red Cross Society's (KRCS) commitment to Community Engagement and Accountability (CEA) is grounded in its extensive experience in responding to disasters and crises. Currently, KRCS is carrying out CEA activities in flood-affected areas. To date, KRCS has conducted community review meetings in Mandera, Garissa, Wajir, Marsabit, Isiolo, Tana River, Mombasa, Kisumu, Makueni, Homa Bay, Migori, and Meru Counties, reaching a total of **2,380 people** (698 men and 1,692 women).
- During the review meetings, KRCS team continues to outline objectives of the activity including documenting emerging issues within the context of flood response, communicating vital information to the affected population, establishing a complaints and feedback desk to document & address community feedback, record & log community feedback received and to develop recommendations on the ongoing floods across the country.
- A total of **41 CRMs** were conducted in 8 counties; (Tana River, Garissa, Makueni, Migori, Homabay, Meru, Isiolo and Wajir). In the established camps, the activity involved detailed discussions on the response to date and the development of future action plans. The CRMs activity was focused on documentation of emerging issues within the context of flood response in the affected area and effectively communicate vital emergency information to the affected populations.
- The KRCS is committed to mainstreaming CEA throughout the response to ensure active and meaningful participation from the affected communities and closure of the feedback loop. The communities will be made aware of the response period, how support will be given to them, and the exit strategy for the KRCS. The communities will also be made aware of the fundings, where they come from, and how they will give their feedback through activities, such as **satisfactory surveys** and **post-distribution monitoring**.
- KRCS will continue to ensure establishment and utilization of **feedback desks** during distributions, outreaches and in camps staffed by CEA focal persons. Conduct community level **review meetings** to understand the progress and views of the community on the response. Continuous handling of the KRCS **toll-free line** (0800720577) to gather and respond to community feedback. All feedback received has been responded to except gratitude messages.

Media

<https://www.facebook.com/share/v/MMwSWugFEQeGyyUW/?mibextid=oFDknk>

https://youtu.be/ja13VXpn5_o

<https://youtu.be/Ut3b6bd3sIE> - Effects in West Kenya and Kirinyaga

<https://x.com/ramogitvke/status/1780863965347578292?s=46&t= gNOjX4xaxaKzT8lC5Af9w>

<https://reliefweb.int/report/kenya/kenya-heavy-rains-and-flooding-update-flash-update-2-19-april-2024>

<https://www.aljazeera.com/gallery/2023/11/23/from-drought-to-deluge-kenyan-villagers-reel-from-floods>

Risk management

By IFRC Risk Management Framework¹ the operation is committed to identifying and analyzing risks associated with activities and operations with the objective of maintaining a safe workplace, minimizing losses, maximizing opportunities, and developing appropriate risk treatment options for informed decision-making. Risks identified across the seven IFRC risk categories: Strategic, Contextual, Operational, Programme Delivery, Fiduciary, Safeguarding, Reputational.

A plan for risk management for this operation was established and will be maintained throughout the life of the operation. The plan specifies how risks are managed for the operation, including the proposed risk appetite and any external reporting requirements. As part of regular monitoring, there are monthly reviews of the plan conducted. Below is a summary of the high-level risks associated for this operation.

Risk	Likelihood	Impact	Mitigating actions
Counties with resource-based conflicts and borders with neighboring countries have a high risk of insecurity	Medium	Medium	Ensure that KRCS teams supporting the response in the counties are well-trained on safer access to enhance their access during interventions.
Insecurity and conflicts	Medium	Medium	Security and risk management measures should be taken to ensure that staff and volunteers are not subjected to increased risk because of insecurity and local conflicts. Further, mitigation strategies should be employed to reduce the risk of resource-based conflicts in targeted communities.
Peak rains are expected in November. Heavy rains and flooding will continue as projected by the KMD. Water levels in the Tana and Nyando rivers will rise and cause further displacements of people.	High	High	The KRCS will continue monitoring the situation and be ready to scale-up. Due to the forecast outcome, the number of people in need may increase, necessitating new funding to support them.
Cholera outbreaks expand to counties being affected by the floods.	High	Medium	The KRCS adopted measures to ensure the continued sensitization of communities on waterborne diseases. Subsequently, there is an ongoing response in counties affected by cholera.
Lack of funding	Medium	Medium	Build a prioritization of activities by location. Ensure, using CEA, that the Movement can communicate with communities on any prioritization/targeting required.
Reduced access – infrastructure damage	High	Medium	All-in budget for air access.

Quality and accountability

Key indicators identified in the Planned Operations section were used to establish a monitoring and evaluation (M&E) framework to oversee the operations. This framework monitored the suitability of the approach, the quality of work, the satisfaction of the targeted population, and the progress on planned activities. The Kenya Red Cross Society (KRCS) and its partners routinely conducted self-assessments against these indicators to ensure that the operation remained on track, that products and services met minimum quality standards, and that the operation continued to be relevant

¹ https://www.ifrc.org/sites/default/files/2022-09/259_e_v100_Risk_Management_Policy.pdf

to the needs of the survivors. The monitoring system also assessed the effectiveness of the accountability systems in place.

In addition, a regular feedback mechanism was implemented, with post-distribution and satisfaction surveys conducted after each significant activity to gather feedback and complaints from specific groups within the crisis-affected population. This formed part of a formal complaints' mechanism. A final evaluation was conducted at the conclusion of the operation.

The operation ensured that all safeguarding measures were adhered to, with KRCS staff and stakeholders complying with the requirements for Prevention of Sexual Exploitation and Abuse (PSEA) and child safeguarding. The actions taken included completing a Child Safeguarding Risk Analysis, implementing screening, briefing, and reporting systems, mapping and testing referral pathways, ensuring child-friendly information and participation, and supporting community feedback mechanisms.

D. FUNDING

The Donor Response is shown below.

Donor	Modality/ Area of Intervention	Counties	Pledge (CHF)	Remarks
Bi lateral and Domestic – ask CHF 8,000,000				
Danish RC	Cash and MHPSS	Makueni and Tana River	200,591	Ongoing Intervention
USAID/BHA	Emergency Shelter	Affected Counties	217,200	Ongoing Intervention
Netherlands via British Red Cross	Food Security & Cash	Tana River County	47,000	Ongoing Intervention
Finish Red Cross- ECHO Crisis Modifier	Multi- Purpose Cash Transfer	Garissa and Tana River	142,500	Ongoing intervention
British Red Cross	Preparedness Activities and Livelihood	Kilifi, Kwale, Lamu,	141,402	Completed
		Sub total	748,693	9%
Multilateral IFRC Secretariat – ask CHF 10,000,000				
DREF loan			750,000	Completed
Canadian RC			32,000	Completed
Japan RC			30,000	Completed
Monaco RC			9,340	Completed
DG – ECHO	DREF replenishment		94,170	Completed
Netherlands RC			280,560	Completed
American Red Cross			347,892	Completed
Norwegian Red Cross	via WSR ERU		418,000	Completed
Italian Red Cross			100,000	Completed
Hong Kong Red Cross			100,000	Completed
		Sub total	2,161,962	
Total Federation Wide – ask CHF 18,000,000				
		Total	2,910,655	16%

To note: The Kenya Red Cross Society (KRCS) has received only 16% of the total Appeal, despite the growing needs in the affected areas. There is still a heavy reliance on the National Society to sustain critical, life-saving interventions. More funding is required to address these needs.

Contact information

For further information, specifically related to this operation please contact:

At the Kenya Red Cross Society:

- **Secretary General:** Dr. Ahmed Idris, Secretary General Kenya Red Cross Society, idris.ahmed@redcross.or.ke, +254 703 037 000
- **Operational Coordination:** Venant Ndighila Head of Disaster Management Operations Kenya Red Cross Society ndighila.venant@redcross.or.ke +254 714 538 379.

At the IFRC:

- **IFRC Regional Office for DM coordinator:** Rui Alberto Oliveira, Regional Operations Lead, rui.oliveira@ifrc.org, +254 780 422276
- **IFRC Country Cluster Delegation:** Mohamed Babiker, Head of Delegation, Somalia and Kenya, mohamed.babiker@ifrc.org, +254 110843974
- **IFRC Geneva:** Santiago Luengo, Senior Officer, Operations Coordination, santiago.luengo@ifrc.org; +41 (0) 79 124 4052

For IFRC Resource Mobilization and Pledge support:

- **IFRC Regional Office for Africa:** Louise Daintrey, Head of Strategic Engagement and Partnerships; louise.daintrey@ifrc.org; +254 110 843 978

For In-Kind donations and Mobilization table support:

- **Regional Head Corporate Services, Africa Region** - Amelia Marzal, amelia.marzal@ifrc.org, +254 0110901576

For In-Kind donations and Mobilization table support:

- IFRC Africa Regional Office for Logistics Unit: Allan Masavah, Head, Global Humanitarian Services & Supply Chain Management, Africa Region, allan.masavah@ifrc.org Phone: +254 (0) 113 834 921.

For Performance and Accountability support (planning, monitoring, evaluation, and reporting enquiries)

- **IFRC Regional Office for Africa** Beatrice Okeyo, Regional Head of PMER & QA, beatrice.okeyo@ifrc.org, Phone: +254 732 404022

Reference documents



Click here for:

- [Emergency Appeal](#)
- [Operations Strategy](#)
- [Emergency Appeal eu1](#)
- [Emergency Appeal eu2](#)
- [Emergency Appeal eu3](#)
- [Revised Emergency Appeal rea1](#)

How we work

All IFRC assistance seeks to adhere the **Code of Conduct** for the International Red Cross and Red Crescent Movement and Non-Governmental Organizations (NGO's) in Disaster Relief, the **Humanitarian Charter and Minimum Standards in Humanitarian Response (Sphere)** in delivering assistance to the most vulnerable, to **Principles of Humanitarian Action** and **IFRC policies and procedures**. The IFRC's vision is to inspire, encourage, facilitate and promote at all times all forms of humanitarian activities by National Societies, with a view to preventing and alleviating human suffering, and thereby contributing to the maintenance and promotion of human dignity and peace in the world.