



KENYA



2025-2026 IFRC network country plan **extract**

Multi-Year Funding Requirement **CHF 53.8M**

10 December 2024

In support of the Kenya Red Cross Society



47

National Society branches



71

National Society local units



721

National Society staff



280,263

National Society volunteers

People to be reached



1.5M

Climate and environment



2.5M

Disasters and crises



3M

Health and wellbeing



150,000

Migration and displacement



250,000

Values, power and inclusion

IFRC network multi-year focus

Emergency response

- Disease outbreak

Longer term needs

- Disaster risk reduction
- Community health
- Water, sanitation and hygiene
- Climate change adaptation
 - Food insecurity

Capacity development

- Branch development
- Youth development
- Resource mobilization

Key country data links

INFORM Severity rating

High

INFORM Climate Change Risk Index

Medium

Human Development Index rank

146

World Bank Population figure

55.1M

World Bank Population below poverty line **38.6%**

Funding requirements

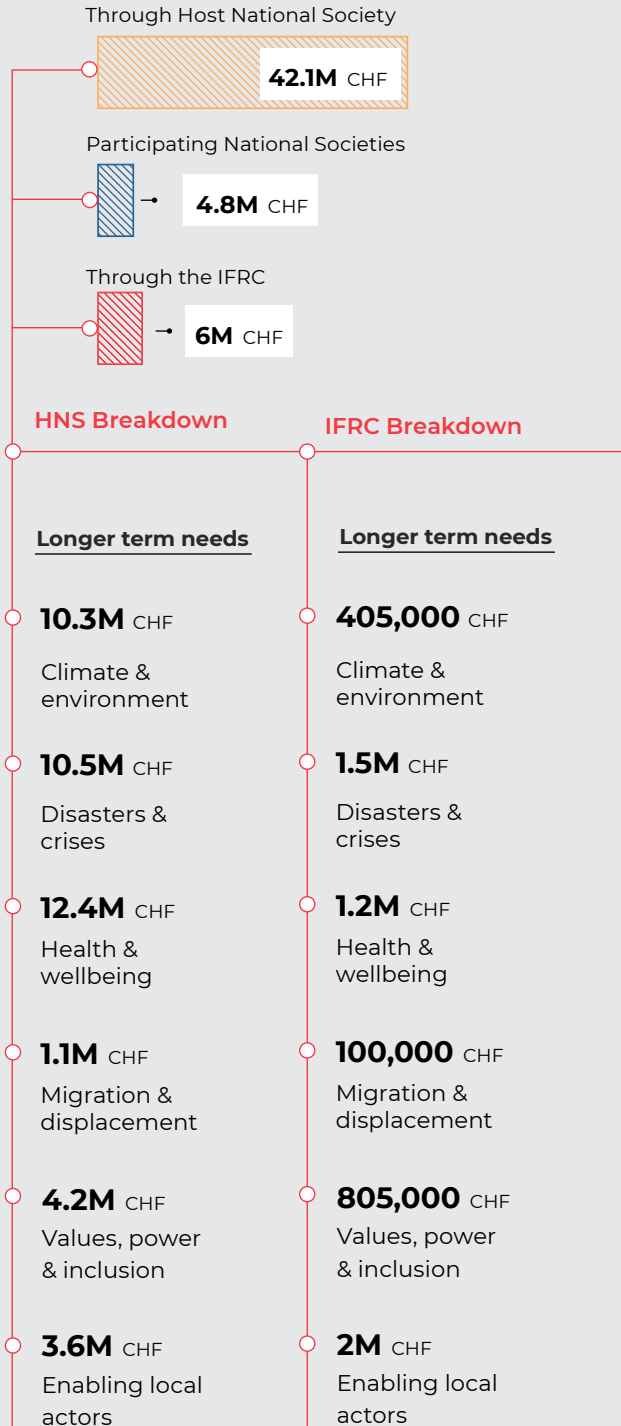
2025

2026**

**Projected funding requirements

Total 52.94M CHF

Total 955,000 CHF



Participating National Societies

955,000 CHF

Participating National Societies

American Red Cross

British Red Cross

Hong Kong Red Cross, Branch of the Red Cross Society of China*

Danish Red Cross

Finnish Red Cross

The Netherlands Red Cross*

Norwegian Red Cross

**National Societies which have contributed only multilaterally through the IFRC in the first half of 2024*

IFRC Appeal codes

African Regional Mpox Epidemic

Emergency Appeal:

MDRS1003*

Longer-term needs:

MAAKE002

**Due to the evolving situation and the regional scope of the appeal, country-specific funding requirements and target reach are not yet reflected on the first page.*

See back page for explanatory note on funding requirements

Participating National Societies bilateral support for 2025

National Society name	Funding Requirement	Climate	Disasters and crises	Health and wellbeing	Migration	Values, power and inclusion	Enabling local actors
American Red Cross	55,000		●	●			
British Red Cross	1.7M	●	●			●	●
Danish Red Cross	1.5M	●	●	●	●	●	●
Finnish Red Cross	1.6M						
Norwegian Red Cross			●	●			

Total Funding requirement **CHF 4.8M**

Hazards



Disease outbreak



Floods



Climate Change



Drought



Food insecurity



Kenya Red Cross volunteers conducting a community epidemic and pandemic preparedness programme (Photo: IFRC)

NATIONAL SOCIETY PROFILE

As per 2024 Plan. To be updated in full 2025 Plan, as per need

The **Kenya Red Cross Society** is a national humanitarian, voluntary organization, established in Kenya by an Act of Parliament in 1965 and admitted to the IFRC in 1967. It is auxiliary to the public authorities, working together in the provision of humanitarian assistance for vulnerable people in Kenya. It is the only humanitarian organization in the country to be established by an Act of Parliament, and the only one with a mandate to complement the work of both national and county level governments. Its auxiliary role also protects the independence of the National Society and the Fundamental Principles of the Red Cross and Red Crescent Movement (RCRC).

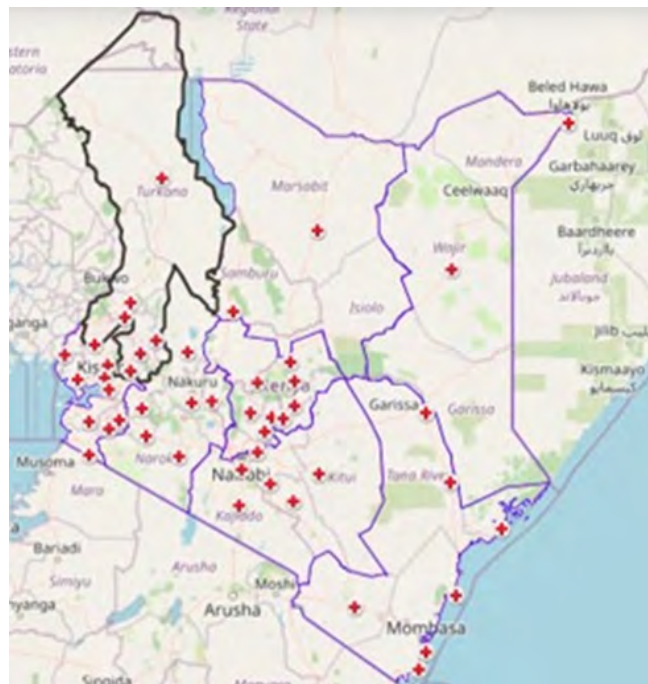
The Kenya Red Cross Society has capacity for both emergency and developmental programming at national and community levels. It has its headquarters in Nairobi and eight regional offices and 47 county branches in Kenya. This capability allows the National Society to be the first to respond and the last to leave when disasters occur. Additionally, it ensures a constant on-the-ground presence to support community-driven. The Kenya Red Cross Society serves a diverse range of communities, with a focus on addressing the needs of the most vulnerable and hard to reach communities in arid and semi-arid lands (ASALs), informal urban settlements, remote rural areas, and geographically marginalized areas. The National Society is deeply rooted in communities, ensuring that programmes

are informed and governed by the needs and perspectives of these communities.

The current Strategic Plan (2021-2025) of the Kenya Red Cross encompasses three strategic programmatic goals and one goal specifically focused on National Society development (NSD), as outlined below:

- Strategy goal 1: Enabling communities to anticipate, prepare, respond to and quickly recover from crises.
- Strategy goal 2: Empowering communities to have opportunities to achieve social, economic and psychosocial wellbeing, leading to healthy lives.
- Strategy goal 3: Encouraging youth to lead positive change in their communities.
- Strategy goal 4: Fostering a resilient National Society dedicated to reinforcing organizational culture, systems, and human resources to achieve its humanitarian and development objectives.

In 2023, the National Society reached three million people with long term services and development programmes, and five million people with disaster response and early recovery programmes.



Map of Kenya Red Cross Society branches

The maps used do not imply the expression of any opinion on the part of the IFRC or the National Societies concerning the legal status of a territory or its authorities



The International Federation of Red Cross and Red Crescent Societies (IFRC) is the world's largest humanitarian network, with 191 National Red Cross and Red Crescent Societies and around 16 million volunteers. Our volunteers are present in communities before, during and after a crisis or disaster. We work in the most hard to reach and complex settings in the world, saving lives and promoting human dignity. We support communities to become stronger and more resilient places where people can live safe and healthy lives, and have opportunities to thrive.

About the plan

This extract will be replaced by the full plan soon.

The plan reflects the priorities of the host National Society, the IFRC and National Societies providing international support, for 2025 and subsequent years. It is aligned with IFRC [Strategy 2030](#), representing the collective ambitions of the IFRC membership, and is the result of a joint planning process and will serve for joint monitoring and reporting. It will be revised on an annual basis to adjust priorities and funding requirements to the needs in-country.

Explanatory note on funding requirements

- The total funding requirements show what the IFRC network seeks to raise for the given year through different channels: funding through the IFRC, through participating National Societies as bilateral support, and through the host National Society from non-IFRC network sources. All figures should include the administrative and operational costs of the different entities
- Host National Society funding requirements not coming from IFRC network sources can comprise a variety of sources, as demonstrated when reporting on income in the [IFRC Federation-wide Databank and Reporting System](#)
- Participating National Society funding requirements for bilateral support are those validated by respective headquarters, and often represent mainly secured funding
- IFRC funding requirements comprise both what is sourced from the IFRC core budget and what is sought through emergency and thematic funding. This includes participating National Societies' multilateral support through IFRC, and all other IFRC sources of funding
- Figures for the years beyond 2025 most often represent partial requirements that are known at time of publication. Many National Societies have annual internal approval processes for funding requirements, and lower figures do not mean a decrease in funding requirements in future years
- Missing data and breakdowns: data may not be available from all IFRC network members for funding requirements. This may lead to inconsistencies across different reporting tools as well as potential under-estimation of the efforts led by all
- Reporting bias: the data informing this Federation-wide overview is self-reported by each National Society (or its designated support entity) which is the owner and gatekeeper, and responsible for accuracy and updating. IFRC tries to triangulate the data provided by the National Societies with previous data and other data in the public domain

Additional information

- [IFRC network country plans](#)
- [All plans and reports](#)
- Data on National Societies on [IFRC Federation-wide Databank and Reporting System](#)
- Live data on active emergency operations on [IFRC GO platform](#)
- Live data on [IFRC-Disaster Response Emergency Fund Anticipatory and Response pillars](#)
- [Evaluations and research databank](#)
- [Donor response reports](#)

Contact information

Dr. Ahmed Idris

Secretary General
Kenya Red Cross Society
T +254 703 037000
idris.ahmed@redcross.or.ke
redcross.or.ke

Louise Daintrey

Head of Strategic Partnerships
& Resource Mobilization
IFRC Regional Office for Africa, Nairobi
T +254 110 843978
louise.daintry@ifrc.org

Mohamed Babiker

Head of Delegation
IFRC Country Cluster Delegation
for Somalia & Kenya, based in Nairobi
T +254 110 843978
mohamed.babiker@ifrc.org

Sumitha Martin

Lead
IFRC Global Strategic Planning & Reporting Centre
New Delhi
sumitha.martin@ifrc.org