

www.ifrc.org
Saving lives,
changing minds.

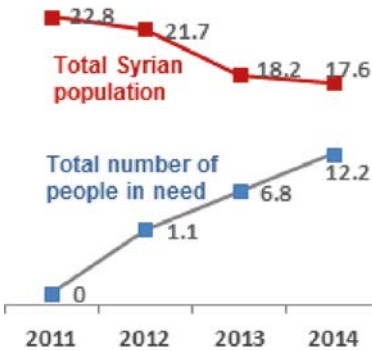
Emergency appeal operations update

Syria: Complex emergency

 International Federation
of Red Cross and Red Crescent Societies



The boundaries and the designations used on this map do not imply the expression of any



OVERALL OBJECTIVE: respond to the needs of the most vulnerable people affected by the current crisis in Syria by supporting SARC's humanitarian response and to enhance SARC operational capacities

MDRSY003 2012-2015

Achievements



Planned 8 million
Reached (YTD) 6.2 million

Total Appeal coverage

Funding required 116 million
Funding (YTD) 85 million
Unmet requirements 31 million

26% needed



MDRSY003 2015 Jan-Apr



Target **Achievements**



SARC **SARC**



0.75 million **0.4 million***



0.25 million **0.18 million**

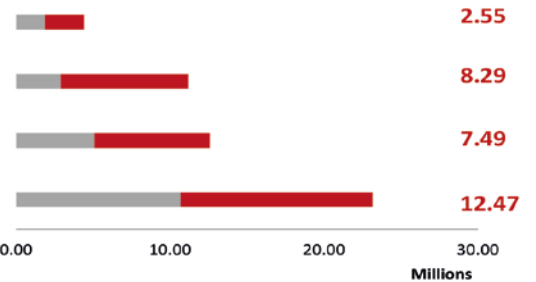


1.75 million **0.6 million**

2015 Appeal coverage


Funding requirements

60% needed
in million CHF



*including patients reached with medicine and through health facilities

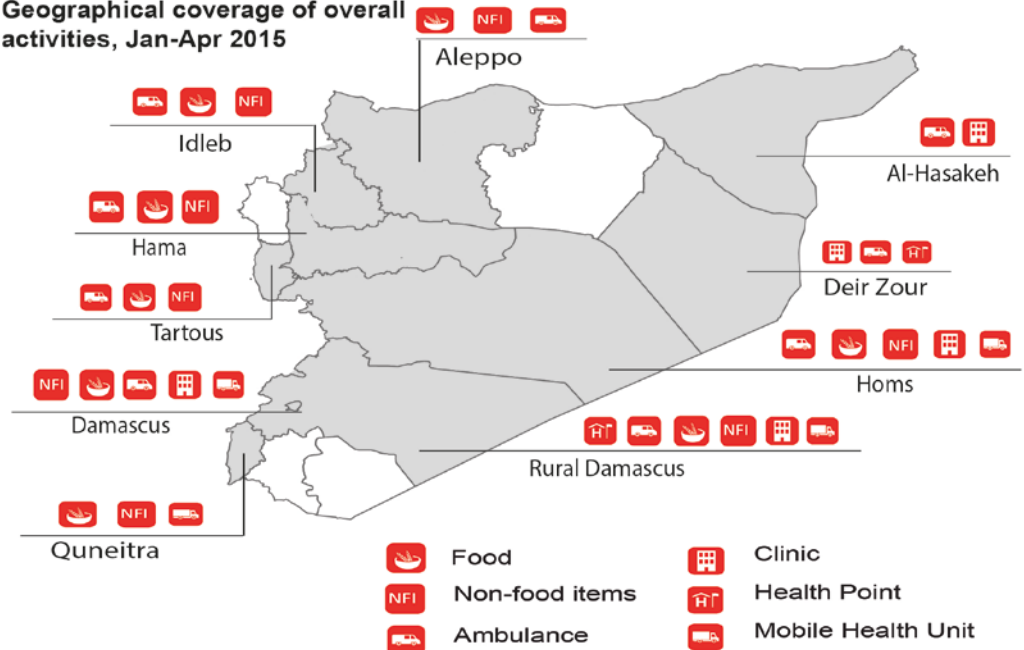
 **7.6 million** estimated number of people internally displaced

 **4.8 million** people in hard to reach areas

 **53**

45 SARC staff and volunteers and **8** staff and volunteers of PRCS lost their lives while providing support since the beginning of the crisis.

Geographical coverage of overall activities, Jan-Apr 2015



The overall budget has been revised due mainly due to the changes in medicines and also including the Livelihoods Delegate and officers positions.

Situation

The past 4 years of this crisis have seen a further deterioration of the situation in Syria. Estimated 12.2 million people are in need of humanitarian assistance with more than half of the pre-crisis Syrian population being displaced either internally or as refugees in the neighbouring countries.

Humanitarian needs in Syria have increased twelvefold since the beginning of the crisis, including more than 5.6 million children. More than half of the total Syria's population has been forced to leave their homes, often multiple times, making Syria the largest displacement crisis in the world.

According to the 2014- 2015 statistics, Syria is facing the following situation: four out of every five Syrians live in poverty, and almost two-thirds live in extreme poverty. Being in the fifth year of the crisis, the situation in Syria becomes more protracted with an increased urgent need for humanitarian assistance. Due to the protracted character of the crisis, the number of people in need for humanitarian assistance has increased continuously to half of Syria's population. All segments of Syria's population life have been affected by multiple cycles of displacements, overload on the basic social and health services, decreased access to food and water aggravated by reduction of alternatives for livelihood activities.

By the end of the first quarter of 2015, the security situation in the country has significantly changed in several areas. Widespread violence intensified throughout the country in March, particularly in the governorates of Al Hassakeh, Aleppo, Damascus, Dar'a, Deir ez-Zor, Hama, Homs, Idlib, Latakia and Rural Damascus, increasing the numbers of casualties, injuries, destruction of homes and infrastructure as well as displacement of civilians. The escalation of violence in Idlib- and more specifically in Idlib city- has resulted in massive population displacement to the rural and northern areas of Idlib, to Tartus and Damascus. By the end of April more than 130,000 people were displaced.

In addition, most of the areas in the north eastern part of the country (Ar-Raqqa, rural Aleppo, Deir Ez-zor and parts of Hasakeh) are hard to reach, not being regularly accessible for continuous humanitarian assistance due to security and safety considerations, and restrictions because of the ongoing violence.

Some areas of Hama and Homs Governorates have become more difficult to access. At the same time, the situation near Damascus has deteriorated mainly in some rural areas close to the city. The situation in Yarmouk camp is particularly alarming where approximately 12,000 families have been displaced to nearby safer locations.

SARC managed to agree on the delivery of needed items to Duma at the beginning of May. During distributions shelling started at the location near SARC sub-branch building when one SARC volunteer lost her life while trying to collect baby milk from the convoy and resulting in several casualties.

Coordination and partnerships

The Syrian Arab Red Crescent (SARC) is the main provider of humanitarian services in Syria, and has the lead role of the Red Cross Red Crescent Movement to respond to the biggest humanitarian crisis in decades. SARC also acts as the entry point for all INGOs registered and operating in the country; furthermore, is the key implementing partner to the UN with up to 60 per cent of the UN relief channelled through SARC.

Through its 14 branches and active sub-branches, with 9,000 registered and 3,000 active volunteers, SARC is present in and has access to all parts of the country working according to the seven Fundamental Principles of the Red Cross and Red Crescent Movement.¹ Sadly, since the beginning of the conflict, 45 SARC and 8 Palestinian Red Crescent Society staff and volunteers have lost their lives while providing assistance to people in need.

2014 IASC study: "SARC's 9,000 staff and volunteers have proved to be professional, well connected and extraordinarily committed"

The IFRC team has regular meetings with SARC management, Partner National Societies and ICRC to coordinate operational issues, and participates in Humanitarian Country Team meetings. The IFRC has the observer status in the Inter Agency Standing Committee.

Delegates from the IFRC and the German, Norwegian, Danish Red Cross National Societies are based in Syria, while the Canadian, Swedish, Netherlands and British National Red Cross Societies are present in the region. All the partners work in a complementary and coordinated manner to support SARC activities in relief, health, water & sanitation and psychosocial support.

¹ Humanity, Impartiality, Neutrality, Independence, Voluntary Service, Unity, and Universality

The following National Societies and other key partners have decided to contribute directly to the IFRC Emergency Appeal during the reporting period².



Operational implementation

The SARC emergency response is still activated in the highest alert due to the recent situation in the volatile areas. The risk for humanitarian workers remains, SARC main branch offices in the Carlton hotel in Idlib city were severely damaged on 17 April.

Humanitarian partners (UN, International and National NGOs, Red Cross/Red Crescent Movement) continue to respond to the increasing identified needs of the people displaced due to the intense fighting in Idlib by prepositioning supplies and strengthening coordination mechanisms within and between hubs. Protection, health, food, WASH, NFI and shelter are identified to be the most pressing, both for IDPs and those living in Idlib city. SARC, local NGOs and INGOs are the primary actors on the ground and remain being the first responders.

IFRC is supporting SARC to respond to the most urgent humanitarian needs through the provision of relief items and health services. IFRC has prepositioned food and other relief items in the logistics Hubs in Tartous and Homs allowing SARC to mobilize them quickly when the often brief access becomes available to the besieged and hard-to-reach areas. This makes IFRC support unique and sets it apart from other humanitarian agencies - operationally and strategically. In the area of health, besides the continuous support to SARC health facilities, IFRC has also been engaged in developing tools and training materials in the area of psychological support and CBHFA violence prevention module.

During the reporting period IFRC continued supporting SARC health facilities (12 clinics, 5 health points, 6 mobile health units) with medicines medical equipment, staff and running costs.

IFRC continues to support SARC in capacity building according to the IFRC Secretariat's core mandate. Activities implemented during the reporting period were related to strengthening SARC sub-branches in implementing the operation, establishing a comprehensive quality assurance system, information management capacity building, and developing and scaling-up good quality community-based health and first aid programmes.

Based on the Livelihoods feasibility study funded by British RC, SARC will identify areas and activities to develop new sustainable response modalities. It is also planned to implement infrastructure feasibility study.

German Red Cross (GRC) has been supporting SARC in the logistics sector, strengthening its logistics capacity through warehouse rent and rehabilitation, running costs and maintenance for the fleet and logistical structures, as well as through means of transport, radio equipment and staff salary support. 22 warehouses have been supported during Q1 2015, including the SARC Logistics Hub in Tartous, with a monthly turnover of more than 120,000 items. Furthermore, GRC has been providing various NFIs, medicines, medical equipment and food.

The Norwegian Red Cross supports SARC programmes in the WASH and relief sectors. In Q1 of 2015, SARC undertook water projects in Dara'a governorate reaching more than 106,000 beneficiaries, and distributed relief items to 203,000 beneficiaries through the support of Norwegian Red Cross.

Hygiene Kits, Baby Kits and Hygiene Kits for Special Needs have been supplied by German Red Cross and Norwegian Red Cross consortium.

The programmes supported by Danish Red Cross provide basic and emergency medical care through 16 medical centres, including medicine, medical equipment and running costs (including 3 Palestinian Red Crescent Society

² The number of beneficiaries in the graphic do not include ICRC figures.

(PRCS) hospitals and clinics). Danish Red Cross (DRC) contributes to the structural costs of SARC HQ and supports the running cost of two SARC branches and 12 sub-branches, including training of volunteers contributing to SARC capacity to operate. Danish Red Cross contributed to reach targeted families in need of assistance with NFI. The Danish Red Cross Psychosocial Programme (PSS) gives support to conflict victims-many of them children- in three SARC PSS centres and five PSS mobile units.

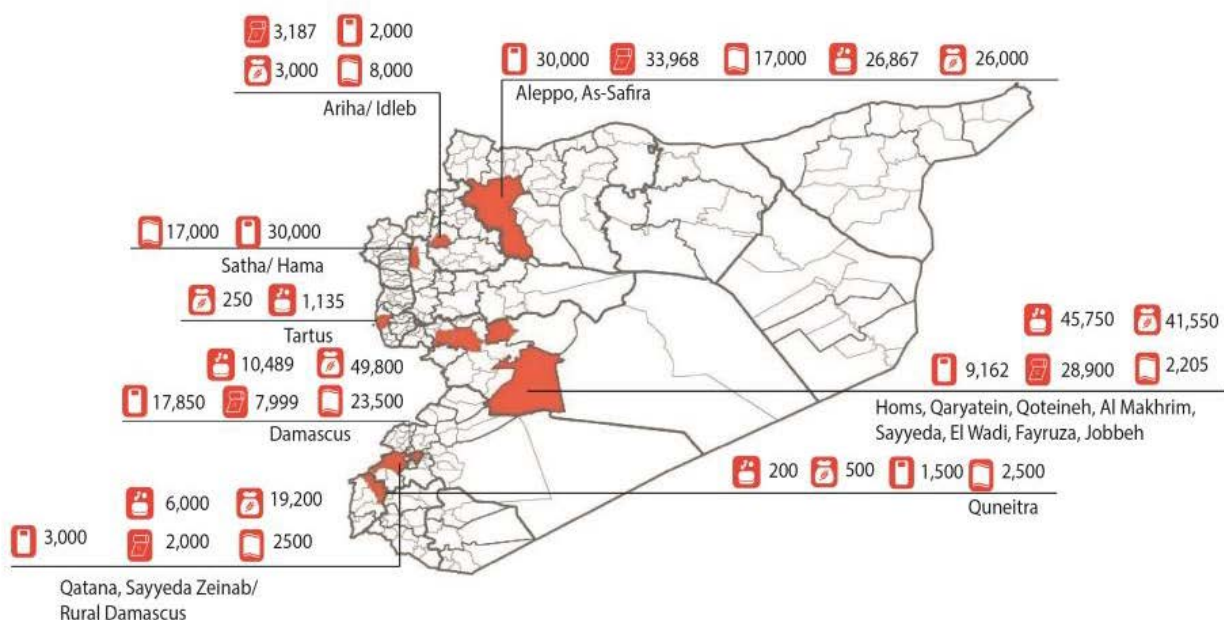
Relief

In the first quarter of 2015, IFRC managed to ensure funding to cover more than 30% of the Food sector's budget to provide assistance with food parcels for the first five months of the year, and using as well the remaining items from 2014. SARC has distributed the quantity of food parcels as planned, however the targeted locations had to be changed to other locations due to administrative procedures or security constraints.

During the reporting period, Relief items were distributed in two contexts:

- responding to the emergency situation in in Idleb and near Damascus due to the population displacement from Yarmouk.
- regular distributions in Aleppo city and in several rural areas of Homs Governorate.

During the reporting period, the total number of people reached through relief items supported by IFRC and PNS was approximately 600,000 as described here.



- This support included different types of relief items such as food, blankets, mats, mattresses and hygiene kits, including also hygiene kits for special needs.
- Food still remains the most needed item according to SARC needs assessments. The food parcels provided to SARC were supported bilaterally by German Red Cross, and through the IFRC Emergency Appeal by British Red Cross Norwegian Red Cross, Swedish Red Cross, China Red Cross Taiwan branch, China Red Cross, Netherlands Red Cross, Italian Red Cross.
- Due to the prolonged cold season, winterization items (blankets, mattresses and mats), supported through Danish Red Cross and IFRC (Swedish, British, Norwegian, Netherlands, Singapore Red Cross Societies, DG ECHO and OFDA) were distributed until March 2015 to the affected populations.
- Hygiene kits, baby kits and hygiene kits for special needs were distributed through the support of German and Norwegian Red Cross Societies, and through the IFRC appeal (supported by OFDA, Netherlands Red Cross and British Red Cross).



Food security

Outcome 8: Ensured access of the most affected populations to items to address their immediate food needs

Indicator: 1.75 million affected people are reached with basic food items provided in IFRC food parcels Achievements: 600,000 people reached with food distributions

Output 8.1 Food items are distributed to vulnerable families over the extended period of the Appeal

Indicator: 500,000 food parcels are procured and used to address the needs of families in emergency situations. Achievements: 140,300 food parcels distributed (72,000 bilateral contribution from GRC)

Shelter and settlements

Outcome 7: Access of the affected populations to essential household items ensured to reduce their vulnerabilities during emergencies or sudden displacements

Indicator: Approximately 250,000 beneficiaries gained access to essential household items Achievements³: Approximately 175,000 beneficiaries benefitted from winterization support (from items distributed in 2015 only)

Output 7.1 Essential household items are prepositioned to be provided to the most vulnerable families (one time distribution)

Indicator: 50,000 families are provided with blankets, mats, mattresses, tarpaulins and kitchen sets Achievements⁴: Approximately 35,000 families received support for winter season in terms of blankets, mats and mattresses (from items distributed in 2015 only)



Water; Sanitation; Hygiene promotion

Outcome 5: Access to items provided to the most vulnerable populations to ensure dignity, personal hygiene and health and to reduce vulnerabilities in health aspects

Indicator: Approximately 1.75 million people reached through hygiene items. Additionally approximately 1 million people reached through NRC and GRC hygiene distribution project Achievements: Through IFRC supported items SARC has reached approximately 100,000 people. Through GRC and NRC supported items SARC has reached approximately 215,000 people

Output 5.1 Items related to personal hygiene are distributed to vulnerable families over the extended period of the appeal

Indicator: 500,000 hygiene kits (family size) procured for distribution. 200,000 hygiene kits (family size) procured for distribution on bilateral basis through NRC and GRC 50,000 Women Emergency Kits Achievements: 18,637 hygiene kits were distributed 43,000 hygiene kits 6,727 WEKs are being procured, 19,000 WEKs available in stocks

Outcome 6: Access improved to water for the affected populations

Indicator: Approximately 400,000 beneficiaries will be reached (implemented fully by NRC) Achievements: 106,000 beneficiaries

Output 6.1 Installation of water tanks, distribution of portable water containers and water treatment devices improve people's access to water

Indicator: Approximately 200,000 beneficiaries will have improved access to water Achievements: Procurement of water treatment material for SARC is ongoing items will arrive by the end of Q2 2015

Output 6.2 Rehabilitation and construction of water sources and water infrastructure improve people's access to water.

Indicator: Approximately 400,000 beneficiaries will have improved access to water Achievements: SARC undertook water projects in Dera'a governorate reaching more than 106,000 beneficiaries

³ The achievement refers to the winter period of 2014/2015, therefore it does not count in achieving the target

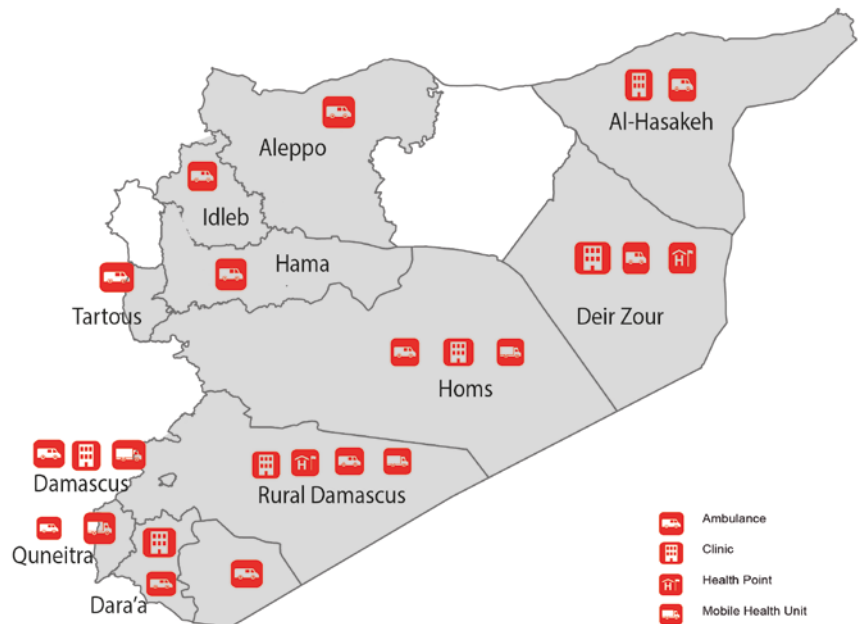
⁴ Ibid.

Health and care

Clinics

During the first four months of 2015, SARC health facilities supported through IFRC provided treatment and consultations to 187,000 people. Unfortunately, the information from Raqqa and Deir-Ez-zor clinics could not be obtained due to the current conflict situation in those areas and lack of communication possibilities. However, SARC confirmed that these clinics are still functional and are mainly treating emergency cases. The clinics supported 80,000 patients; more than 95,000 registered medical consultations and treatment, mainly related to internal health.

The highest number of patients were registered in Jaramana in Rural Damascus which has biggest capacity to receive patients; the number of visits could be higher, but the doctors cannot see all the patients in the same day, therefore people are often asked to come back the following day. In Tadmur the number of new patients has significantly increased (almost doubled since the last quarter of 2014); more than 80 per cent of the total patients that received treatment were newly registered at the clinic. The clinic in At Tal and Al Bokamal has been receiving an increasing number of patients.



Health Points

In the Q1 of 2015 five health points were operating and provided 60,000 consultations. The health point in Deir Ez-Zor city is only providing ambulance services and is treating only emergency cases, as the needed equipment could not be delivered to the location due to the lack of the needed approvals. At the time of writing this report, the health facilities in Al Bokamal and Deir Ez-Zor have stopped operating due to limitations in their service provision.

In 2015, during the reporting period, SARC could not access the health point in Duma to deliver the required equipment and medications. However, this health point is still providing services and sending regular reports about the number of patients treated. This health point is not regularly accessible with convoys due to the ongoing violence in the area.

The opening of an additional health point in Mniem (Rural Damascus, near At Tal) is in progress. The location of the health point has been identified, and the equipment required is available. SARC will use the equipment purchased for Deir Ez-Zor health point to set up this new one. The location has been chosen based on the IDPs received in the past year, which overpassed the capacity of the clinic in At Tal to serve all the patients that needed treatment, and the location of the health point allows easier access to the health services to the population in case the situation deteriorates in the area as it happened at the end of 2014.

Mobile Health Units (MHU)

SARC **Mobile Health Units** (MHU) are mainly focusing on shelters and rural areas in the governorates and trying to reach out to beneficiaries who lack regular access to health care. Thereby, these SARC facilities are addressing a gap in the health service provision. The total number of patients treated by MHU during the reporting period was more than 29,000. The majority of the patients are female and approximately 60 per cent of the patients are children. Currently, IFRC is supporting nine MHUs working in the areas of: Rural Damascus (3 MHU), Homs, Quneitra, and Deir Ez-Zor (Al Bokamal). One MHU started responding to the IDPs from Yarmouk, two other MHUs were sent to Tartus and Latakia to provide services to the new IDPs coming from Idleb and Aleppo. During the reporting period one ambulance and one MHU in Al Bokamal has been taken.

Ambulances/First aid services

SARC first aid activities continue in all Governorates supported through the IFRC, however information from Raqqa, Deir Ez-Zor and Hasakeh has been arriving intermittently given the security situation and the areas being often cut off to be able to provide their reports. The delay of reports and information from the hard-to-reach areas has become more often than last year.

Ambulances are operating in conflict situations providing emergency first aid and transportation of patients to the closest hospitals or clinics. A total number of 17,660 patients received the service by the end of April 2015. The number of patients in this report shows a significant decrease due to the fact that reports from Deir-Ez-Zor and Raqqa (where IFRC supports 3 ambulances) were not sent on-time to include in this update. At the time of preparing the report, the ambulance car in Al Bokamal was taken, therefore SARC was not able to provide such service in the city.

Medicines

By the end of April 2015, approximately 5 tons of medicine were sent to Idlib in response to the urgent health needs of the populations affected by the recent violence in Idlib city. Medicines for chronic diseases and acute diseases, medical consumables were dispatched and distributed to health facilities and also to the people affected. The medicines prepositioned with the IFRC support allowed SARC to respond immediately to the needs of 200,000 patients until June/July 2015. Medical consumables were able to reach all the first aid teams operational in the field to respond to the emergency.

IFRC has been supporting Danish Red Cross and SARC to develop materials for PSS training for volunteers and the affected population in order to institutionalize the PSS activities of SARC. DRC organised a training of trainers on PSS care for volunteer for 21 PSS volunteers who were able to reach 411 beneficiaries in Qamishly and Aleppo centres.



Health and care

Outcome 1: The immediate health risks of the affected population are reduced and prevented through the provision of emergency and basic health care services by filling the gaps in the health service provision.

Indicator: Number of people receiving treatment at SARC health facilities on a monthly basis Achievements: An average of 187,000 people were receiving treatment in SARC health facilities supported by IFRC and DRC

Output 1.1: The population in need benefit from SARC supported emergency and basic health care services even in areas where health service provision is limited.

Indicator: Number of SARC health facilities supported: IFRC 9 Mobile Health Units, 15 clinics, 8 health points, DRC 10 health points, 4 clinics Achievements: IFRC supported operational costs of 9 MHUs, 5 health points and 12 clinics. One additional health point will be opened end of July 2015. DRC has 10 operational health points and 2 clinics are currently running and one will be opened in Latakia soon.

Outcome 2: The emergency health risks are reduced through the provision of emergency evacuation services, targeted for the affected population.

Indicator: Number of branches have the capacity to implement emergency evacuation services Achievements: Currently all SARC branches are equipped with ambulances and trained first aiders, but in the reporting period for April two branches haven't provided reports

Output 2.1 Providing the injured and critical ill patients with timely professional and high level of emergency evacuation services.

Indicator: Number of missions conducted, number of patients served Achievements: 16,171 missions conducted, 17,660 patients received the service (Jan-April 2015)

Outcome 3: Curative and preventive medicines provided through IFRC/SARC primary health facilities (fixed and mobile) to the displaced populations and vulnerable community.

Indicator: Number of health facilities provided with needed medicines Achievements: 5 health points, and to the response in Idlib

Output 3.1 Providing the injured and critical ill patients with needed medicines

Indicator: Number of patients reached in health facilities supported with needed medicines Achievements: Approximately 200,000 people reached⁵ in 10 health points together with DRC, 101,000 vials of insulin by DRC, Medical equipment for clinic, DRC procurement of psychiatric medicines were provided for SARC clinic (through IFRC) for at least 500 patients.

Outcome 4. Psychosocial care and attention provided to the people affected by the consequences of the crisis

Indicator: Number of people receiving support

Output 4.1 Traumatized patients participating in psychosocial sessions and social activities

Indicator: Number of patients reached through DRC supported psychosocial centres and mobile units

⁵ The calculation takes into account the necessary treatment for chronic diseases. The amount of medicine dispatched was sufficient for three months treatment.

Output 4.2 Affected people and communities receive skills training and basic livelihood support

Indicator: Number of people and communities reached Achievements: vocational training courses completed for 411 beneficiaries in Qamishly and Aleppo centres.

Output 4.3 Capacity of SARC staff and volunteers are enhanced through diffusion sessions to enable relevant service provision

Indicator: Number of volunteers participating in diffusion sessions 21 SARC volunteers from 10 branches participated on "Caring for volunteers" TOT workshop

Capacity building

The situation in most parts of the country is not conducive to extensive organisational development. In general SARC management feedback acknowledged that there has been a significant improvement in the operation's coordination and related to information management. However, after the reporting period it has been raised that an overall capacity assessment might be conducted for SARC in cooperation with Movement partners.

Regarding the contribution to enhance SARC sub-branch capacities, SARC has identified several sub-branches actively engaged in the operation and in need for additional support. Partners have agreed on which sub-branch will be supported with the available funding through a joint approach between IFRC, British Red Cross and Danish Red Cross. A total of 20 sub-branches have received different kind of support last year, mainly related to running and staff costs and some basic equipment such as furniture and communication tools.

In the reporting period, SARC has been conducting assessments in the following sub-branches: As-Safira, Ariha, Mashta Elhiu, Qara, Harasta, Ain Mnien, and Kisweh. The process of conducting assessment is rather time consuming and requires safe access to the area. At the same time, SARC is facing challenges in continuing to support the sub-branches in Deir-Ez-Zor Governorate due to the latest developments related to attempts to interfere with SARC operation, which is implemented in a neutral and impartial way. The assessment for Tadmur sub-branch, planned for the second half of May, is postponed until the situation allows safe access to the area.

In the area of information management, new template have been shared and used for SARC annual reporting, allowing SARC to share timely and extensive information on a regular basis (when possible) to its partners.

Furthermore, the database for registering the relief distributions linked with stock movement information has been prepared and is ready to be tested by SARC. At the same time, this database also includes health information for all supported health facilities. Further plans for SARC capacity building in information management and reporting include training on data visualization and data analysis, also an advanced Excel training will be organised for the reporting focal points of the branches. Currently different partners are also willing to cooperate in such activities, hence a ToR will be prepared and shared with SARC management.

In close cooperation with British Red Cross, SARC capacities in the area of monitoring will be enhanced, also related to beneficiary accountability. Such activity is closely linked to the Logistics quality assurance initiative that has been implemented on a regular basis since the beginning of 2015. The quality of relief items are regularly assessed and tested and results are shared with partners and suppliers for feedback. These two initiatives aim at enhancing SARC capacity to keep increasing the quality of the services to beneficiaries in the relief area, which has a significant importance given the fact that SARC is working together with several partners and sometime the content of different kits are not harmonized affecting SARC reputation when facing complaints from beneficiaries.

In the area of health capacity building, in March 2015, an MHU review workshop was organized for 35 participants including medical doctors, nurses and MHU coordinators. The workshop content consisted of proper surveillance, proper drug use, epidemiology, induction to the Red Cross and SWOT analysis of the current MHU services provided. All SARC partners – ICRC, IMC and IFRC – involved in MHU service provision were represented in the workshop.

CBHFA violence prevention workshop was organized in April 2015 for 22 participants from SARC branches. The workshop focused on the review of IFRC violence prevention material related to its context and relevance and future possible application. The tailored material is being translated to be used for awareness raising activities in the communities.



National Society capacity building

Outcome 9: The efficient operation implementation is supported through enhanced SARC capacities and a well-functioning organizational structure for future sustainability

Indicator: Number of SARC senior management rates that capacities have significantly and sustainably increased in the specific technical areas (logistics, disaster management, health and care).

Output 9.1 Enhance capacities and facilities to strengthen SARC sub-branches in implementation of the operation and contribute to future sustainability

Indicator: Initially support approximately 36 sub-branches actively involved in the operation through relief and health activities Achievements: 11 sub branches supported. Assessment carried in 8 sub-branches for support needs.

Output 9.2 Disaster Management: Harmonize initiatives to establish a comprehensive quality assurance system for relief items from entry point to beneficiary feedback

Indicator: Concept of the system is introduced to harmonize initiatives Planned for Q2 2015

Output 9.3 Information management capacity building: SARC management is supported for informed decision making through quality and timely information materials, reports and analysed information

Indicator: Information materials produced, new tools are introduced and effectively used by SARC Annual report tool and template prepared for SARC

Output 9.4 Health: Together with SARC, develop and scale-up good quality community-based health and first aid programmes through targeted capacity-building and training of volunteers and staff to increase the knowledge and skills of affected population in epidemic control, hygiene promotion, vector control, first aid and psychological support

Indicator: At least 20,000 people in affected communities, including IDP camps, have been reached To be reported in Q2

Output 9.5 Health: There is significantly increased knowledge in SARC on how to prevent and manage public health risks among displaced communities; with priority given to IDP populations and populations living in high risk areas.

Indicator: Number of teams specialized and reporting to use health in emergencies skills 35 MHU staff trained

Output 9.6 Communications, Resource Mobilization and Humanitarian Diplomacy: enhanced capacity of SARC staff in communications, resource mobilization and humanitarian diplomacy

Indicator: # of management staff trained in HD; # of SARC staff trained in negotiation skills Planned for Q3 2015

Activities to contribute to future relevant programming

During the first quarter of 2015, in close cooperation with British RC and SARC, it has been agreed to conduct the livelihoods feasibility study as agreed when revising the appeal. The study aimed at assessing SARC's capacity to implement livelihood interventions for the affected populations, and also analyzing and prioritizing potential options and areas for livelihood interventions. BRC seconded a surge capacity to IFRC who conducted a desk review of existing activities implemented in Syria; visited the livelihoods pilot project that are already implemented; and had meeting with partners and SARC branch officers to discuss the options for future approaches. **The livelihoods feasibility study** has been finalized by mid-May.

The overall proposed approach is that any future livelihoods support will not be designed to replace SARC existing emergency response. Rather a 'twin track' approach is proposed with livelihoods as a complementary, parallel second track of assistance. The activities will initially address the needs for small and targeted number of beneficiaries and ideally to enable those selected to transition from SARC relief to SARC supported livelihoods activities. The study included recommendations of several options for SARC management to start the process; also for RCRC Movement partners to closely coordinate their activities and to agree on one Movement approach.

At the time of reporting, the position of an IFRC Livelihoods Delegate has published and interviews were taking place, and SARC is in process of recruiting two Livelihoods officers. The main objectives of these positions will be to support and contribute to SARC to explore possibilities for livelihoods programming and develop SARC Livelihoods strategy.

In the area of **infrastructure**, IFRC together with Norwegian Red Cross and other RCRC Movement partners will conduct a feasibility study. A ToR for a delegate has already been prepared and will be published soon. The main tasks would include to assess together with SARC and RCRC Movement partners the situation of SARC infrastructure and provide feasible and realistic recommendations solutions for improvements to ensure sustainability of SARC programmes and structure.

Planned activities to contribute to future relevant programming

Outcome 10: Livelihoods feasibility study carried out providing recommendations and a roadmap for possible future projects in the sector

Indicator: Feasibility study conducted

Feasibility study prepared

Output 10.1: The results of the assessment lead to adjustments in the planning as appropriate

Indicator: Assessment results and recommendations shared with SARC management for further joint deliberation on next steps.

Recommendations shared with SARC management, pilot projects will be planned and implemented

Outcome 11: Feasibility study on infrastructure needs of sub-branches and warehousing capacity carried out providing recommendations and a roadmap for possible future projects

Indicator: Feasibility study conducted

ToR for delegate prepared

Output 11.1: The results of the assessment lead to adjustments in the planning as appropriate

Indicator: Assessment results shared with SARC management

Planned for Q3



Programme support services

Logistics

Outcome 12: Maintained optimal logistics mobilization and pipeline management for both bilateral and multilateral consignments

Output 12.1: Consolidated and standardized mobilization and pipeline management

Achievements: 188,000 different types of items (food parcels, blankets, hygiene kits, mats and mattresses, kitchen sets and generators) ordered

Output 12.2: SARC response capacity is strengthened through logistics support and coordination

Preparing for Logistics and warehouse management workshop, preparation of Logistics Emergency Operation Structure supported with SOPs.

The IFRC Logistics support is well integrated with SARC logistics emergency response capacity. Core support is to maintain optimal logistics mobilization and pipeline management for both bilateral and multilateral consignments that are imported, handled for reception, stored in central warehouse hubs and dispatched for distribution. The IFRC Logistics Coordinator, in close coordination with IFRC Global Logistics Service Dubai office and Geneva, plans and monitors the supply chain arriving to the port in Lattakia or transiting through Lebanon. The Mobilisation Table is regularly updated with new items identified by the National Society according to agreed specifications.

Since the beginning of 2015 IFRC has ordered more than 188,000 different types of items (food parcels, blankets, hygiene kits, mats and mattresses, kitchen sets and generators). SARC Tartus warehouse has received around 690,000 different types of relief items, and has dispatched 550,000 items.

German Red Cross continued supporting the rental costs of 22 warehouses, running costs for seven warehouses and staff costs for 97 SARC logistics staff in Tartus Central warehouse and branch/sub-branch warehouses. IFRC and German Red Cross together are contributing to support SARC fleet running costs.

Furthermore, the IFRC team was reinforced as of 23rd March 2015 with Field logistics delegate based in Tartus operating in harmony with SARC logistics infrastructure supporting warehouse operations in addition to assisting the IFRC Logistics Coordinator on the implementation of the logistics capacity building projects and to oversee the on-job warehouse management trainings for the branches staff / volunteers enrolled. Besides, has the responsibility for monitoring and tracking the pipeline for the incoming shipments and ensures proper handling, receiving and report goods received in timely manner.

Humanitarian Diplomacy

Outcome 13: Increased visibility of activities in Syria

Indicator: % increase to views (likes and comments) on Syria on IFRC Website and social media

Output 13.1: Increased capacity in Emergency Communication

Output 13.2: Emergency communication is enhanced through production and dissemination of communication products

Indicator: # of staff trained in emergency communication Planned for Q3 2015

Outcome 14: Enhanced positioning of Movement towards becoming a key partner for major humanitarian partners

Indicator: % of funding coverage for Syria Emergency Appeal

Output 14.1: Well-coordinated positioning and global representation for the Movement is ensured

Output 14.2: Enhanced coordination with Movement and non-Movement partners on information and facts regarding the humanitarian situation and needs

Indicator: # of representation meetings at international level

of HD products shared with partners

Indicator: # of local/national events hosted by SARC/IFRC Planned for Q3 2015

of local/national events SARC/IFRC participated in

Reference documents



Click here for:

Previous Appeals and updates
Emergency Plan of Action (EPoA)
Mobilisation table

Contact Information

For further information specifically related to this operation please contact:

In Syria

Mr. Marwan Abdullah, General Director, Syrian Arab Red Crescent Society, phone +963113327691/3327698; fax: +963 11 332 7695; email: sarc@net.sy; info@sarc.sy
Jyri Rantanen; IFRC Country Representative, phone: +963113327691/3327698, mobile phone: +963 959 999 869; email: jyri.rantanen@ifrc.org

In IFRC MENA Zone office

Azmat Ulla, Head of Operations, MENA Zone, phone: +961 71 802 791, email: azmat.ulla@ifrc.org

In Geneva

Cristina Estrada, Operations Quality Assurance; phone: +41 79 3583106; email: cristina.estrada@ifrc.org

For Resource Mobilization and Pledges:

In IFRC Syria: Karina Lapteva, Quality Assurance & Resource Mobilization delegate for Syria, phone: +961 71 802 914, email: karina.lapteva@ifrc.org

For In-Kind donations and Mobilization table:

Global Logistics Services - Dubai office: Sera Coelho, Logistics Delegate, phone +971 4 4572993 ext. 23, email: sera.coelho@ifrc.org

In IFRC Syria: Logistics Coordinator, Hicham Diab, phone: +963 948 898 796, +961 71 802482, email: hicham.diab@ifrc.org

For Performance and Accountability (planning, monitoring, evaluation and reporting enquiries)

In IFRC MENA Zone: Nadine Haddad, Senior Planning, Monitoring, Evaluation and Reporting Officer, phone: + 961 71 802775, email: nadine.haddad@ifrc.org

In IFRC Syria: Eszter Matyeka, Syria Reporting Delegate, phone: +961 71 802 781, email: eszter.matyeka@ifrc.org

How we work

All IFRC assistance seeks to adhere to the **Code of Conduct** for the International Red Cross and Red Crescent Movement and Non-Governmental Organizations (NGO's) in Disaster Relief and the **Humanitarian Charter and Minimum Standards in Humanitarian Response (Sphere)** in delivering assistance to the most vulnerable. The IFRC's vision is to inspire, **encourage, facilitate and promote at all times all forms of humanitarian activities** by National Societies, with a view to **preventing and alleviating human suffering**, and thereby contributing to the maintenance and promotion of human dignity and peace in the world.

The IFRC's work is guided by Strategy 2020 which puts forward three strategic aims:



Save lives,
protect livelihoods,
and strengthen recovery
from disaster and crises.



Enable **healthy**
and **safe** living.



Promote social inclusion
and a culture of
non-violence and **peace**.

EMERGENCY APPEAL

29/05/2015

MDRSY003

Syria - Syria - Syria Complex Emergency Syria Crisis

Budget Group	Multilateral Response	Bilateral Response	Appeal Budget CHF
Shelter - Relief	1,599,914		1,599,914
Shelter - Transitional	0		0
Construction - Housing	0		0
Construction - Facilities	0		0
Construction - Materials	0		0
Clothing & Textiles	12,639,328		12,639,328
Food	39,877,388		39,877,388
Seeds & Plants	0		0
Water, Sanitation & Hygiene	9,796,413		9,796,413
Medical & First Aid	10,997,276		10,997,276
Teaching Materials	960,510		960,510
Utensils & Tools	1,414,607		1,414,607
Other Supplies & Services	439,718		439,718
Emergency Response Units	0	10,219,368	10,219,368
Cash Disbursements	0		0
Total RELIEF ITEMS, CONSTRUCTION AND SUPPLIES	77,725,155	10,219,368	87,944,523
Land & Buildings	0		0
Vehicles	2,119,890		2,119,890
Computer & Telecom Equipment	265,635		265,635
Office/Household Furniture & Equipment	310,044		310,044
Medical Equipment	0		0
Other Machinery & Equipment	0		0
Total LAND, VEHICLES AND EQUIPMENT	2,695,569	0	2,695,569
Storage, Warehousing	5,144,904		5,144,904
Distribution & Monitoring	3,117,156		3,117,156
Transport & Vehicle Costs	946,638		946,638
Logistics Services	2,336,461		2,336,461
Total LOGISTICS, TRANSPORT AND STORAGE	11,545,159	0	11,545,159
International Staff	3,147,217		3,147,217
National Staff	291,863		291,863
National Society Staff	3,927,936		3,927,936
Volunteers	1,831,004		1,831,004
Total PERSONNEL	9,198,020	0	9,198,020
Consultants	38,307		38,307
Professional Fees	196,383		196,383
Total CONSULTANTS & PROFESSIONAL FEES	234,690	0	234,690
Workshops & Training	705,235		705,235
Total WORKSHOP & TRAINING	705,235	0	705,235
Travel	298,794		298,794
Information & Public Relations	266,865		266,865
Office Costs	235,824		235,824
Communications	115,525		115,525
Financial Charges	753,326		753,326
Other General Expenses	180,000		180,000
Shared Office and Services Costs	268,475		268,475
Total GENERAL EXPENDITURES	2,118,809	0	2,118,809
Partner National Societies	4,557,832		4,557,832
Other Partners (NGOs, UN, other)	0		0
Total TRANSFER TO PARTNERS	4,557,832	0	4,557,832
Programme and Services Support Recovery	7,070,731		7,070,731
Total INDIRECT COSTS	7,070,731	0	7,070,731
Pledge Earmarking & Reporting Fees	453,330		453,330
Total PLEDGE SPECIFIC COSTS	453,330	0	453,330
TOTAL BUDGET	116,304,530	10,219,368	126,523,898
Available Resources			
Multilateral Contributions	87,839,333		87,839,333
Bilateral Contributions		10,219,368	10,219,368
TOTAL AVAILABLE RESOURCES	87,839,333	10,219,368	98,058,701
NET EMERGENCY APPEAL NEEDS	28,465,197	0	28,465,197

Disaster Response Financial Report

MDRSY003 - Syria - Syria Crisis

Timeframe: 06 Jul 12 to 31 Dec 15

Appeal Launch Date: 06 Jul 12

Annual Report

Selected Parameters

Reporting Timeframe	2012/6-2015/5	Programme	MDRSY003
Budget Timeframe	2012/6-2015/12	Budget	BUDGET9
Split by funding source	Y	Project	*
Subsector:	*		

All figures are in Swiss Francs (CHF)

I. Funding

	Raise humanitarian standards	Grow RC/RC services for vulnerable people	Strengthen RC/RC contribution to development	Heighten influence and support for RC/RC work	Joint working and accountability	TOTAL	Deferred Income
A. Budget		102,118,302	14,186,228			116,304,530	
B. Opening Balance							
Income							
Cash contributions							
Airbus		36,437				36,437	
American Red Cross		1,029,202				1,029,202	
Andorran Red Cross		7,576				7,576	
Australian Red Cross		378,349				378,349	
Austrian Red Cross		1,206				1,206	
Austrian Red Cross (from Austrian Government*)		964,733				964,733	
Austria - Private Donors		975				975	
Belgian Red Cross (Flanders)		69,384				69,384	
Belgian Red Cross (Francophone) (from Belgian Federal Government*)		358,399				358,399	
British Red Cross		7,307,724				7,307,724	
British Red Cross (from British Government*)		30,079				30,079	
British Red Cross (from DEC (Disasters Emergency Committee)*)		1,503,156				1,503,156	
British Red Cross (from Great Britain - Private Donors*)		4,140				4,140	
British Red Cross (from Unidentified donor*)		27,207				27,207	
Canadian Red Cross		396,023				396,023	
Canadian Red Cross (from Canadian Government*)		5,895,891				5,895,891	
China Red Cross, Hong Kong branch		70,943				70,943	
Danish Red Cross		170,088				170,088	
Danish Red Cross (from Danish Government*)		12,000				12,000	
Danish Red Cross (from European Commission - DG ECHO*)		2,398,531				2,398,531	
European Commission - DG ECHO		11,727,600				11,727,600	
Finnish Red Cross		267,242				267,242	
Finnish Red Cross (from Finnish Government*)		705,880				705,880	
France - Private Donors		2,415				2,415	
Germany - Private Donors		32				32	
Great Britain - Private Donors		4,306				4,306	
International Arab Charity		7,439				7,439	
Ireland - Private Donors		1,238				1,238	
Irish Government		600,910				600,910	
Irish Red Cross Society		91,822				91,822	
Italian Government Bilateral Emergency Fund		181,089				181,089	
Italian Red Cross		120,120				120,120	
Italian Red Cross (from Italian Government*)		509,620				509,620	
Japanese Government		502,345				502,345	
Japanese Red Cross Society		233,872	388,380			622,252	
Kuwait Red Crescent Society		457,792				457,792	
Luxembourg Government		124,797				124,797	
Luxembourg - Private Donors		153				153	
New Zealand Red Cross		173,443				173,443	
Norwegian Red Cross		911,066				911,066	
Norwegian Red Cross (from Norwegian Government*)		3,119,499				3,119,499	
On Line donations		150,392				150,392	
Other		1,330,318				1,330,318	
Poland - Private Donors		147				147	
Red Crescent Society of Islamic Republic of Iran		30,000				30,000	
Red Cross of Monaco		14,472				14,472	
Romanian Red Cross		241				241	

Disaster Response Financial Report

MDRSY003 - Syria - Syria Crisis

Timeframe: 06 Jul 12 to 31 Dec 15

Appeal Launch Date: 06 Jul 12

Annual Report

Selected Parameters			
Reporting Timeframe	2012/6-2015/5	Programme	MDRSY003
Budget Timeframe	2012/6-2015/12	Budget	BUDGET9
Split by funding source	Y	Project	*
Subsector:	*		

All figures are in Swiss Francs (CHF)

<i>Singapore Red Cross Society</i>	14,467		14,467
<i>Spanish Red Cross</i>	148,156		148,156
<i>Suncor Energy Inc.</i>	238,260		238,260
<i>Swedish Red Cross</i>	13,744,606	551,553	14,296,159
<i>Swedish Red Cross (from Swedish Government*)</i>	810,604	827,329	1,637,933
<i>Switzerland - Private Donors</i>	1,700		1,700
<i>Taiwan Red Cross Organisation</i>	103,663		103,663
<i>The Netherlands Red Cross</i>	5,937,491		5,937,491
<i>The Netherlands Red Cross (from Netherlands Government*)</i>	3,623,983	521,430	4,145,413
<i>The Red Cross Society of Bosnia and Herzegovina</i>	2,466		2,466
<i>United States Government - USAID</i>	4,714,603		4,714,603
<i>United States - Private Donors</i>	13,396		13,396
C1. Cash contributions	71,283,683	2,288,691	73,572,374
Inkind Goods & Transport			
<i>American Red Cross</i>	144,105		144,105
<i>Belgian Red Cross (Flanders)</i>	155,518		155,518
<i>British Red Cross</i>	9,116,426		9,116,426
<i>Canadian Red Cross</i>	121,195		121,195
<i>China Red Cross, Hong Kong branch</i>	79,072		79,072
<i>Finnish Red Cross</i>	899,163		899,163
<i>Norwegian Red Cross</i>	23,307		23,307
<i>Spanish Red Cross</i>	386,416		386,416
<i>The Netherlands Red Cross</i>	2,964,503		2,964,503
C2. Inkind Goods & Transport	13,889,705		13,889,705
Inkind Personnel			
<i>Finnish Red Cross</i>	125,680	11,800	137,480
<i>Other</i>	0		0
<i>Swedish Red Cross</i>	253,510		253,510
C3. Inkind Personnel	379,190	11,800	390,990
Other Income			
<i>Fundraising Fees</i>	-13,735		-13,735
C4. Other Income	-13,735		-13,735
C. Total Income = SUM(C1..C4)	85,538,842	2,300,491	87,839,333
D. Total Funding = B + C	85,538,842	2,300,491	87,839,333

* Funding source data based on information provided by the donor

II. Movement of Funds

	Raise humanitarian standards	Grow RC/RC services for vulnerable people	Strengthen RC/RC contribution to development	Heighten influence and support for RC/RC work	Joint working and accountability	TOTAL	Deferred Income
B. Opening Balance							
C. Income		85,538,842	2,300,491			87,839,333	
E. Expenditure		-73,612,947	-198,191			-73,811,138	
F. Closing Balance = (B + C + E)		11,925,896	2,102,300			14,028,196	

Disaster Response Financial Report

MDRSY003 - Syria - Syria Crisis

Timeframe: 06 Jul 12 to 31 Dec 15

Appeal Launch Date: 06 Jul 12

Annual Report

Selected Parameters

Reporting Timeframe	2012/6-2015/5	Programme	MDRSY003
Budget Timeframe	2012/6-2015/12	Budget	BUDGET9
Split by funding source	Y	Project	*
Subsector:	*		

All figures are in Swiss Francs (CHF)

III. Expenditure

Account Groups	Budget	Expenditure					TOTAL	Variance
		Raise humanitarian standards	Grow RC/RC services for vulnerable people	Strengthen RC/RC contribution to development	Heighten influence and support for RC/RC work	Joint working and accountability		
	A					B	A - B	
BUDGET (C)			102,118,302	14,186,228		116,304,530		
Relief items, Construction, Supplies								
Shelter - Relief	1,599,914		651,414			651,414	948,500	
Clothing & Textiles	12,639,328		10,624,549			10,624,549	2,014,778	
Food	39,877,388		24,296,396			24,296,396	15,580,992	
Water, Sanitation & Hygiene	9,796,413		5,333,483			5,333,483	4,462,930	
Medical & First Aid	10,997,276		6,958,337			6,958,337	4,038,939	
Teaching Materials	960,510		510			510	960,000	
Utensils & Tools	1,414,607		822,719			822,719	591,888	
Other Supplies & Services	439,718		436,268			436,268	3,450	
Total Relief items, Construction, Sup	77,725,155		49,123,678			49,123,678	28,601,477	
Land, vehicles & equipment								
Vehicles	2,119,890		1,759,890			1,759,890	360,000	
Computers & Telecom	265,635		278,518			278,518	-12,883	
Office & Household Equipment	310,044		284,043			284,043	26,000	
Total Land, vehicles & equipment	2,695,569		2,322,452			2,322,452	373,117	
Logistics, Transport & Storage								
Storage	5,144,904		1,987,934	95		1,988,029	3,156,875	
Distribution & Monitoring	3,117,156		2,722,611	19,548		2,742,159	374,997	
Transport & Vehicles Costs	946,638		647,447			647,447	299,191	
Logistics Services	2,336,461		1,758,403			1,758,403	578,058	
Total Logistics, Transport & Storage	11,545,159		7,116,394	19,644		7,136,037	4,409,122	
Personnel								
International Staff	3,147,217		2,125,988	147,770		2,273,758	873,459	
National Staff	291,863		141,365	1,347		142,712	149,151	
National Society Staff	3,927,936		1,464,402			1,464,402	2,463,534	
Volunteers	1,831,004		308,939			308,939	1,522,065	
Other Staff Benefits			101,311			101,311	-101,311	
Total Personnel	9,198,020		4,142,005	149,116		4,291,121	4,906,899	
Consultants & Professional Fees								
Consultants	38,307		38,307			38,307	0	
Professional Fees	196,383		115,367			115,367	81,016	
Total Consultants & Professional Fees	234,690		153,674			153,674	81,016	
Workshops & Training								
Workshops & Training	705,235		69,769	764		70,534	634,701	
Total Workshops & Training	705,235		69,769	764		70,534	634,701	
General Expenditure								
Travel	298,794		160,032	2,370		162,402	136,392	
Information & Public Relations	266,865		24,770			24,770	242,095	
Office Costs	235,824		48,304			48,304	187,521	
Communications	115,525		67,212	1,889		69,101	46,424	
Financial Charges	753,326		486,809	101		486,910	266,415	
Other General Expenses	180,000		35,070			35,070	144,930	
Shared Office and Services Costs	268,475		197,107	5,797		202,904	65,571	
Total General Expenditure	2,118,809		1,019,303	10,158		1,029,461	1,089,349	
Contributions & Transfers								
Cash Transfers National Societies	4,557,832		4,557,832			4,557,832	0	
Total Contributions & Transfers	4,557,832		4,557,832			4,557,832	0	

Disaster Response Financial Report

MDRSY003 - Syria - Syria Crisis

Timeframe: 06 Jul 12 to 31 Dec 15

Appeal Launch Date: 06 Jul 12

Annual Report

Selected Parameters

Reporting Timeframe	2012/6-2015/5	Programme	MDRSY003
Budget Timeframe	2012/6-2015/12	Budget	BUDGET9
Split by funding source	Y	Project	*
Subsector:	*		

All figures are in Swiss Francs (CHF)

III. Expenditure

Account Groups	Budget	Expenditure					TOTAL	Variance
		Raise humanitarian standards	Grow RC/RC services for vulnerable people	Strengthen RC/RC contribution to development	Heighten influence and support for RC/RC work	Joint working and accountability		
	A					B	A - B	
BUDGET (C)			102,118,302	14,186,228		116,304,530		
Operational Provisions								
Operational Provisions			280,661	11,231		291,892	-291,892	
Total Operational Provisions			280,661	11,231		291,892	-291,892	
Indirect Costs								
Programme & Services Support Recove	7,070,731		4,416,529	7,277		4,423,807	2,646,924	
Total Indirect Costs	7,070,731		4,416,529	7,277		4,423,807	2,646,924	
Pledge Specific Costs								
Pledge Earmarking Fee	404,210		365,130			365,130	39,080	
Pledge Reporting Fees	49,120		45,520			45,520	3,600	
Total Pledge Specific Costs	453,330		410,650			410,650	42,680	
TOTAL EXPENDITURE (D)	116,304,530		73,612,947	198,191		73,811,138	42,493,392	
VARIANCE (C - D)			28,505,355	13,988,037		42,493,392		

Disaster Response Financial Report

MDRSY003 - Syria - Syria Crisis

Timeframe: 06 Jul 12 to 31 Dec 15

Appeal Launch Date: 06 Jul 12

Annual Report

Selected Parameters

Reporting Timeframe	2012/6-2015/5	Programme	MDRSY003
Budget Timeframe	2012/6-2015/12	Budget	BUDGET9
Split by funding source	Y	Project	*
Subsector:	*		

All figures are in Swiss Francs (CHF)

IV. Breakdown by subsector

Business Line / Sub-sector	Budget	Opening Balance	Income	Funding	Expenditure	Closing Balance	Deferred Income
BL2 - Grow RC/RC services for vulnerable people							
Disaster response	73,317,753		78,827,688	78,827,688	73,423,417	5,404,271	
Food security	19,410,139		5,539,959	5,539,959	0	5,539,959	
Recovery	9,390,411		1,171,195	1,171,195	189,530	981,665	
Subtotal BL2	102,118,302		85,538,842	85,538,842	73,612,947	11,925,896	
BL3 - Strengthen RC/RC contribution to development							
Health	11,040,457		1,668,195	1,668,195	19,760	1,648,435	
Organizational development	3,145,770		632,297	632,297	178,431	453,866	
Subtotal BL3	14,186,228		2,300,491	2,300,491	198,191	2,102,300	
GRAND TOTAL	116,304,530		87,839,333	87,839,333	73,811,138	14,028,196	