

# Emergency Appeal Operation Update

## Ebola Virus Disease Emergency Appeals (Guinea, Liberia, Sierra Leone and Global Coordination & Preparedness)

### Combined Ebola Operations Update N° 23<sup>1</sup>

Reporting period: 1 – 28 June 2015

#### Summary

IFRC's Ebola strategic framework is organised around 5 outcomes:

- The epidemic is stopped
- National Societies have better Ebola preparedness and stronger long term capacities
- IFRC operations are well coordinated
- Safe and Dignified Burials (SDB) are effectively carried out by all actors
- Recovery of community life and livelihoods



Red Cross Society of Guinea technician Alpha Camara, broadcasts Red Cross Santéya Radio, a radio station taken around remote communities in Guinea to enable people to ask questions and discussions about Ebola. Corinne Ambler/IFRC.

Six emergency appeals were launched to combat Ebola Virus Disease (EVD) outbreaks in Guinea, Liberia, Sierra Leone, Nigeria and Senegal, while providing coordination and technical support at the regional and global level.

Ebola Emergency Appeals: Summary Update on Resource Mobilization					
Appeal	Guinea MDRGN007	Liberia MDRLR001	Sierra Leone MDRSL005	Coordination & Preparedness MDR60002	Total Figures (CHF)
<b>Budget</b>	<b>56M</b>	<b>46.3M</b>	<b>94.6M</b>	<b>15.9M</b>	<b>212.8M</b>
<b>Income to date</b>	26.2M	21.9M	53.9M	11.4M	113.4M
<b>Coverage</b>	47%	47%	57%	72%	53%
<b>Funding gap</b>	29.8M	24.4M	40.7M	4.5M	99.4M
<b>Funding priorities:</b> IFRC is urging donors to commit non-earmarked funds with longer timeframes.					

In helping stop the epidemic, the appeal operations employ a 5 pillar approach comprising: (1) Beneficiary Communication and Social Mobilization; (2) Contact Tracing and Surveillance; (3) Psychosocial Support; (4) Case Management; and (5) Safe and Dignified Burials (SDB) and Disinfection.

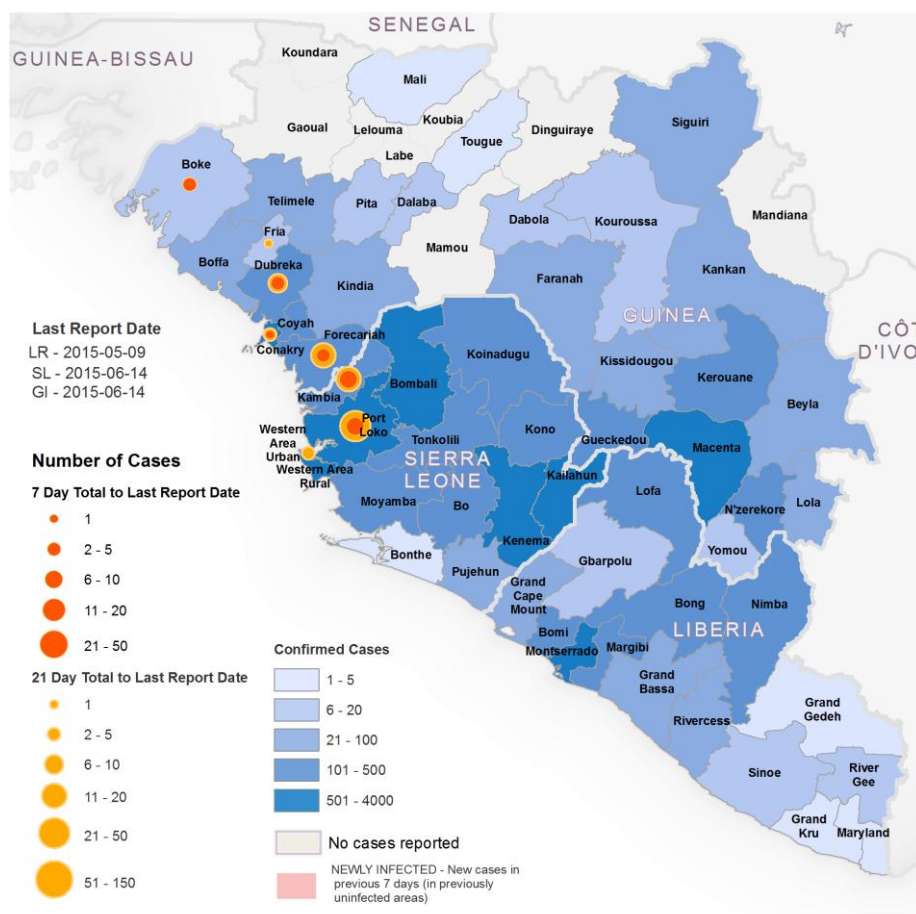
Smaller preparedness and response operations were financed by the IFRC Disaster Response Emergency Fund (DREF) in Mali, Cote d'Ivoire, Cameroon, Togo, Benin, Central African Republic, Chad, Gambia,

<sup>1</sup> A single combined operations update is produced for the 4 Ebola operations on a monthly basis.

Kenya, Guinea Bissau and Ethiopia. In total, 16 countries in Africa launched emergency operations relating to this outbreak.<sup>2</sup>

To date there have been a total of 27,550 reported confirmed, probable, and suspected cases of EVD in Guinea, Liberia and Sierra Leone, with 11,235 reported deaths. There have been 91 confirmed cases of Ebola virus disease (EVD) reported in the month to 28 June. Weekly case incidence has been between 20 and 27 cases for 5 consecutive weeks.

Figure 1: Geographical distribution of new and total confirmed cases (Source: WHO)



In **Guinea**, there are currently four active prefectures: Bokè, Conakry, Dubreka and Forecariah. In the northwestern prefecture of Bokè, which borders Guinea-Bissau, the main focus of transmission remains the village of Tamaranssy in the sub-prefecture of Bokè Centre. Three prefectures that reported cases in the week to 28 June have reported cases for the past four weeks or more, although the area and nature of transmission within those prefectures continues to change. In the northern prefecture of Bokè, which borders Guinea-Bissau, 9 of 10 cases were registered contacts residing in Tamaranssy, which is currently under quarantine. One of these cases is a health worker. The remaining case from Boke is from the coastal sub-prefecture of Kamsar. This case is also a health worker and has generated a substantial number of high-risk contacts.

On 23 June the Government of Guinea decided that all community deaths in Guinea should be safely buried by the Red Cross in collaboration with government civil protection teams, regardless of epidemiological link or laboratory test result. The Red Cross is advocating to remain focused on active prefectures where transmission continues, as well as any new hotspot areas.

<sup>2</sup> An operation in Democratic Republic of Congo was launched to combat the separate Ebola outbreak that is not part of the West Africa outbreak.

On 29 June, routine surveillance detected a confirmed case of EVD in Margibi County, **Liberia** —the first new confirmed case in the country since 20 March. The case is a 17-year-old male who first became ill on 21 June. After presenting at a local health facility the patient was treated for malaria and discharged. He died on 28 June and received a safe burial the same day. An oral swab taken before the burial subsequently tested positive for EVD. One hundred and two contacts have been identified, although that number is expected to increase as investigations continue. At this stage the origin of infection is not known. The case reportedly had no recent history of travel, contact with visitors from affected areas, or funeral attendance. Two additional cases were confirmed on 30 June 2015. As a part of the preparedness plan, LNRCS mobilised fifty volunteers in Grand Bassa County and one hundred volunteers in Montserrado. Three Red Cross SDB teams are on stand-by to be deployed should the MoHS request assistance.

All Transmission in **Sierra Leone** remains concentrated in several chiefdoms of Kambia and Port Loko districts, and a single neighbourhood of the capital, Freetown, the first confirmed cases following several weeks without any new infections. Challenges in tracing and monitoring contacts continue to hamper efforts to end transmission, with a proportion of cases not detected until after death, increasing the risk of further transmission. On the 16 June 2015, the National Ebola Response Center launched 'Operation Northern Push' to get Sierra Leone to zero Ebola cases as quickly as possible. This 21-day campaign is designed to identify, contain, and get rid of Ebola by applying maximum resources where they are needed most: Port Loko and Kambia. The campaign will use surveillance, contact tracing, quarantine when necessary, and strict enforcement of existing bylaws to stop the spread of Ebola.

## Operation Updates

Latest available cumulative data are provided below for 11 situation and programme indicators.

	Operational Countries and Appeals			
	GUINEA	LIBERIA	SIERRA LEONE	TOTAL
	(MDRGN007)	(MDRLR001)	(MDRSL005)	
<b>Cumulative Cases</b>	3,729	10,669	13,119	27,517
<b>Cumulative Health Care Worker Deaths</b>	100	192	222	514
<b>Cumulative Deaths</b>	2,482	4,807	3,932	11,221
<b>Fatality rate</b>	67%	45%	30%	41%
<b>Safe and Dignified Burials(SDB) conducted by NS</b>	9,033	3,825	17,180	30,038
<b>Trained RC volunteers active in Ebola</b>	967	N/A	2,664	3,631
<b>Contacts traced by NS</b>	9,956	7,827	79,377	97,160
<b>Houses disinfected by NS</b>	23,026*	2,818	13,219	39,063
<b>People reached through face to face social mobilization</b>	1,563,097	2,409,593	2,440,580	6,413,270
<b>People reached through Psychosocial support</b>	6,005	7,215	309,906	323,126
<b>People treated by NS</b>	N/A	N/A	954	954

NA= Not applicable - Treatment currently supported only by the Appeal in Sierra Leone

Source: Ministries of Health Sitreps (Guinea, Liberia, Sierra Leone, Nigeria, Senegal), WHO data

\*This figure refers to the number of rooms disinfected by Red Cross teams.

‡ Case management is being implemented bilaterally in Guinea.

## Guinea

### ***Social mobilization and beneficiary communication***

Social mobilization and beneficiary communications activities continued throughout Guinea, with 99,755 people reached through face-to-face interactions in the reporting period, and significantly more through radio and television broadcasts.

#### Highlights

- 69 volunteers were trained in Beneficiary Communications and community engagement approaches, and a further three volunteers were trained on radio techniques.
- Launch of interactive radio programs in Bokè at CBG radio.
- Participation in the awareness campaign run in confined communities in Forecariah and Dubréka.
- Broadcast of 24 interactive radio shows on RTG and rural radio stations. During these programmes 267 calls were received, in addition to 12 SMS.
- Launch of Red Cross radio "Santéya" in Tanéné as part of the confinement campaign.
- Distribution of solar radio to 4000 families in Forecariah and Dubréka Prefectures.
- Development of cross-border strategy on communication, community engagement and surveillance (joint strategy with the IFRC Sierra Leone EVD operation)
- Mapping of districts bordering (operational area) with Sierra Leone.

#### Plan:

- Launching of cross-border activities.
- Production of 12 magazines in synergy with private radio programmes.
- Training of community teams (volunteers and community members) on the Beneficiary Communications approach in Bokè prefecture.
- Deployment and installation of radio Santéya in Bokè.

### ***Psychosocial Support***

Psychosocial support (PSS) activities are targeted at survivors, Ebola-affected families, and Red Cross staff and volunteers. In the reporting period, 135 people received psychosocial support from Red Cross teams.

#### Highlights

- 560 staff and volunteers participated in a psychosocial support survey, designed to evaluate the psychosocial status of personnel involved in the EVD operation.
- 135 community members received psychological first aid from Red Cross volunteers in Doumbouya District in Coyah.

#### Planning

- Distribution of Condolence Kits in Conakry.
- Training of 50 Imams and other religious leaders in psychological first aid in Dubreka.
- Development of two radio programmes in Coya, focusing on the topic of psychological first aid.

### **Contact Tracing and Surveillance**

The Guinea Red Cross provides volunteers to undertake contact tracing and surveillance activities with other response agencies around the country. Red Cross volunteers are currently being recruited and will be trained in Community Event-Based Surveillance (CEBS) and later join Community Epidemic Response Teams (CERTs).

### **Case Management in Red Cross Ebola Treatment Centres – Macenta**

It should be noted that case management is being implemented bilaterally by French Red Cross in Guinea.

In the reporting period, GRC teams transported 122 suspected Ebola cases to Ebola treatment centres.

### **Safe and Dignified Burials and Disinfections of Houses**

In the reporting period, Safe and Dignified Burial (SDB) teams conducted 2,080 safe burials across Guinea, in addition to disinfecting 1,473 rooms in houses and other facilities. GRC took 1,918 swabs, and took over swabbing from the DPS in Dubreka on 7 June, the last of the active zones where GRC was not previously responsible for swabbing. The number of SDB teams has been scaled up further, from 99 in the previous reporting period to 104 by the end of June 2015.

The number of positive deaths identified in the community over the 4 weeks was 13, which represents 0.63% of deaths safely buried.

### **Challenges**

- As the number of burials has increased, particularly in newly active zones like Bokè and Dubreka, violence against Ebola responders has also increased. The Red Cross base in Kamsar, in Boko Prefecture, was ransacked on 29 May and a Ministry of Health ambulance transporting a live Ebola suspect ambushed and burned in Dubreka on 30 May. In response, the Red Cross deployed a mobile radio station to Dubreka which started broadcasting on 6 June, and distributed several thousand solar radios to the population to allow them to listen to the interactive radio programmes. On the first day of broadcasting the radio station received 22 phone calls from the people of Dubreka calling to apologize for attacking the ambulance and explaining that they had not understood that there still was Ebola in Guinea.

### **Planning**

- A third 21 day intensive surveillance campaign is being launched in Forecariah, Bokè and Dubreka Prefectures at the end of June to reinforce the message that Ebola is still in Guinea, and the Red Cross will support this through the distribution of solar radio sets, and radio programming on local radio stations.
- On 29 June the SDB Commission presented the rationale and proposal for a scaled down approach, with the Red Cross continuing systematic burials in Lower Guinea for one more month, and being available for safe burials in case of epidemiological link in the rest of the country. As of 1 August 2015 it is hoped that there will be sufficient diagnostic capacity nationwide to revert to the former “Conakry system” of returning bodies to their families if they test negative, and only safely burying the bodies that test positive for Ebola.

## **Liberia**

### **Social Mobilization and Beneficiary Communication**

Red Cross volunteers continued to conduct social mobilization and community education sessions across Liberia, and 77,401 people were reached during the reporting period.

Highlights**Grand Gedeh Hub**

Social mobilization for EVD in Grand Gedeh Hub came to an end in May 2015. Currently there are no social mobilization activities on EVD being carried out in this area.

**Bomi Hub**

The national polio and vitamin A campaign was conducted from 26 - 29 June 2015. Chapters under Bomi Hub are supporting County Health Teams to disseminate messages among the communities. County health Teams are also being reinforced through joint monitoring and logistical support.

- Bomi Chapter mobilized 15 social mobilisation volunteers along with staff in 20 communities of Suehn Mecca District for the national polio campaign. The IFRC Emergency Health Delegate also accompanied chapter staff during awareness raising and monitoring visits.
- Gbarpolu Chapter mobilized 44 social mobilisation volunteers along with staff in 50 communities of Bopolu District for the national polio campaign. The IFRC Emergency Health Delegate also accompanied chapter staff during the awareness and monitoring visits.
- Grand Cape Mount Chapter mobilized 32 social mobilisation volunteers along with staff in 16 communities of Porkpa and Tewor Districts for the national polio campaign.

**Challenges :**

- Late planning of the campaign by the County Health Team. Information was only given to partners a few days before the campaign.
- Mothers in some communities were reluctant to participate in the campaign due to the Ebola vaccine trial.
- Due to heavy rain some communities are becoming inaccessible.
- Internet connectivity is also a challenge as a result of the rainy season.

**Bong Hub**

In reaction to the new EVD cases, the scale-down of social mobilisation activities has been stopped in Lofa, Nimba and Bong Chapters, as preparations are undertaken for a possible rapid scale-up of response activities.

**Grand Bassa Hub**

- Margibi County Margibi Chapter has mobilized a total of 50 volunteers to conduct social mobilization activities in the EVD affected community of Margibi.
- As part of EVD response preparedness, a total of 100 volunteers from Montserrado chapter and 50 volunteers from Grand Bassa chapter have been engaged for social mobilization, contact tracing and psychosocial support.

***Psychosocial Support***

Psychosocial support continues to be provided to affected individuals, families, community members and Red Cross staff and volunteers, with 843 people reached by the National Society in the reporting period. Psychosocial support counsellors have been conducting activities across Grand Bassa, Monterrado, Margibi, Gbarpolu, Grand Cape Mount, Sinoe and Bong, including individual counselling sessions, client follow-up, and sessions with survivors and their families.

Highlights

- Psychosocial support is being provided to callers through the PSS hotline.
- Head Quarters are following up with Chapters on their individual psychosocial support plans.
- Gbarpolu Chapter followed up on 22 EVD survivor orphans in eight communities in Gbarma district, and carried out awareness in eight Schools in Gbarma and Bopolu districts for a total of 620 students.

- Red Cross distributed 527 hands washing buckets in three districts (Gbarma, Bopolu and Guowawala Districts)
- Met with the Child Protection Unit at the Ministry of Gender regarding a collaboration in raising awareness in schools and communities on teenage pregnancy.
- Red Cross visited Camp 3 in Grand Cape Mount Chapter to meet with survivors and to talk to volunteers as well as community members. Stigma remains high in the area, and continued awareness raising and counselling sessions are planned for this community.
- Awareness raising was carried out in one high school in Sinoe Chapter, with 25 students.
- A three-day Psychological First Aid training was conducted in Bong County with Danish Red Cross. One hundred teachers (72 male and 28 female) from Salala, Totota and Gbarnga participated.

### ***Safe and Dignified Burials and Disinfection of Houses***

After handing back the responsibility to the Ministry of Health and Social Welfare (MoHSW), Red Cross is no longer providing SDB services in Liberia.

LNRCS and IFRC are planning to conduct research in safe and dignified burials, titled “Evaluating the impact of safe and dignified burials in the West Africa Ebola Virus crises”. The research proposal has been submitted to the ethics department of the University of Liberia, and the IFRC health delegate and LNRCS PMER staff presented the SDB research plan to the institutional review board. Feedback from the board was shared with Geneva for revision.

In preparation for a possible escalation in the number of cases, three SDB teams are currently on stand-by, which has been communicated to the MoHS.

### ***Surveillance – Active Case Finding***

The Red Cross is not conducting any contact tracing at present, and is instead involved in active case finding. During the reporting period 276 volunteers from nine counties were involved in active case finding. Volunteers conducted household visits in targeted communities, interviewing any sick persons, taking temperatures, and providing support on referrals to community health committees for further assessment and referral to hospitals where needed. Volunteers also monitored visitors/non-residents through town chiefs and community members, and reported community deaths to County Health Teams.

Following the confirmation of a new case in Margibi, Montserrado and Grand Bassa Counties are preparing for contact tracing. The number of volunteers, and their eventual mobilization will be dependent on the Government’s request.

### **Highlights**

- Cross border assessments have been carried out in two districts of Bong County (Panta and Zota) A joint border assessment was conducted in Grand Cape mount and Gbarpolu along with WHO, IOM, Global community and others in order to review the county action plan, progress against activities and identify of gaps. The team visited Border check points, met BIN officials and health office in charge (OIC) at the border health facility. The specific objectives of this assessment were:
  - To assess coordination, reporting systems, monitoring and evaluation.
  - To assess preparedness, working conditions, referral systems, support received and persisting gaps.

All partners will meet again to finalize the county border action plan next week.

### **Challenges/Recommendations**

Malaria cases, especially in pregnant women, are increasing due to the rainy season. District health clinics are also reporting deaths of children due to malaria.

### **Case Management - Community-Based Household Protection**

Community-Based Household Protection (CBHP) Kits have been prepositioned in several towns, including:

- River Gee: 61 kits were prepositioned in 9 towns
- Maryland: 71 kits were prepositioned in 6 towns
- Grand Gedeh: 75 kits were prepositioned in 10 towns.

#### Highlights

- Monitoring of prepositioned CBHP Kits is ongoing in Gewor, Mulbah and Quinee Town in Bomi County, and Morlakquella, Belle-Yela, Gbarngay and Gbarnga-Gborketa, in Gbarpolu County.
- CBHP Kits have been used on a number of occasions, including in Mulbah town when a man had a fever, vomiting and joint pain, and was later sent to Sueh clinic for treatment, and for a number of pregnant women who have presented with fevers and headaches in Belle-yela in Gbarpolu County.

## **Sierra Leone**

### **Social Mobilization and Beneficiary Communications**

Social mobilization and beneficiary communications activities continued during the reporting period, and people were reached across the country through house-to-house activities and focus group discussions.

#### Highlights:

- 140 fully-equipped information kiosks have been handed over to the community and are operational nationwide. They will act as a platform for sharing information and receiving feedback and complains from the community on Red Cross activities, and are open to all humanitarian partners willing to share and interact with community members.
- Red Cross took part in planning at both the national and district levels for a mass immunization campaign targeting approximately 1.5 million children. The program will target measles and polio. Red Cross has also been supporting defaulter tracing, and the distribution of vitamin A supplements and vouchers for treated mosquito nets. As a result:
  - 1296 volunteers were actively supporting the campaign across all 14 districts.
  - 14 sound trucks broadcasting messages on the campaign in local languages were active across the country.
  - Volunteers engaged with 108,874 households to promote the importance of immunization days.
  - 963,063 persons were reached by Red Cross with messages on the campaign encouraging them to bring their children for vaccination.
  - 154,599 children were vaccinated against measles while 3,070,090 received the polio vaccine the support of RC volunteers.
  - 6,783 mosquito net have been distributed by Red Cross teams on the behalf of the MoHS.
- In support of 'Operation Northern Push', Red Cross trained and deployed an additional 697 volunteers to Port Loko through an MoU with UNICEF. Additionally Red Cross also deployed nine vehicles, (including six sounds truck), 120 megaphones and batteries, 15 000 leaflets and posters, and 33 bicycles to community leaders in the current hotspot areas.
- SLRCS continued supporting cross-border activities by training 90 community volunteers to support community engagement activities at 25 crossing points. Seven additional information kiosks have been built and equipped with communication materials and preventive items (oral rehydration salts, condoms, soap etc).

**Challenges:**

- Denial of EVD and resistance to response activities continues, particularly in border areas. There have also been reports of people escaping from quarantine zones, increasing the risk of transmission.
- Exit by partners involved in social mobilisation activities has led to an increasing number of requests to SLRCS to take over these activities in a number of districts.

**Planning:**

- Refresher training for all social mobilisation teams.
- Distribution of community kits to 2000 volunteers
- Roll out of Epidemic Control for Volunteers (ECV).

**Psychosocial Support**

The Red Cross continues to support the reintegration of survivors back into their communities through the provision of psychosocial first aid, using individual and group counselling, and broader community engagement. To date, 570 psychosocial support volunteers have been trained. In the reporting period, 42,744 people were supported through psychosocial support activities.

**Surveillance and Contact Tracing**

A total of 500 volunteers have been trained in contact tracing to date, 490 of whom were actively involved in the national surveillance system during the reporting period.

**Highlights**

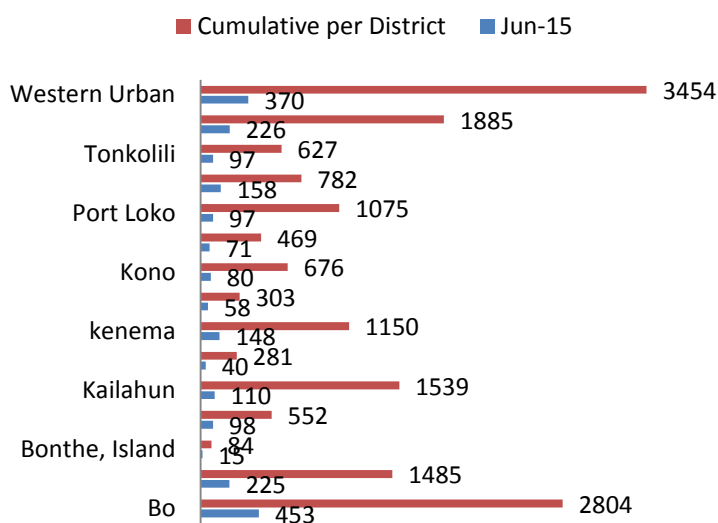
- Meetings were held with the deputy Minister of Health and other officials at MoHS to clarify next steps in the implementation of Community Event-Based Surveillance (CEBS).
- IFRC and SLRCS were actively involved in reviewing the national SoPs for community based surveillance.
- The implementation plan for CEBS has been developed for Port Loko, which has been aligned with 'Operation Northern Push' and has a special focus on identifying suspected Ebola cases in the community.

**Case Management in Red Cross Ebola Treatment Centres - Kenema and Kono**

In the reporting period, 17 people were admitted to the Red Cross Ebola Treatment Centre at Kono, with nine discharged. There are currently three patients admitted.

**Safe and Dignified Burials and Disinfections**

Red Cross currently has 55 SDB teams and four decontamination teams operating across Sierra Leone, who conducted 2,385 safe burials in the reporting period, in addition to disinfecting 1,432 houses. Red Cross teams continue to carry out more than 50% of all safe burials across the country.



**Graph 1: Cumulative burials conducted by the Red Cross teams per district**

### Highlights

- Research into the impact of safe burials is ongoing in the districts of Kailahun, Western Rural Area and Kambia.

### Challenges

- Some community members have re-commenced unsafe burials, which contravenes the Government order that all corpses must be buried by trained safe burial teams.

### Planning

- SDB refresher training
- Second National Disaster Response Team (NDRT) training
- Participation in the Regional Disaster Response Team (RDRT) Training
- Monitoring and Quality control

## Revision of EVD Appeals

The EVD Emergency Appeals for Guinea, Liberia and Sierra Leone have been revised to incorporate longer-term recovery programming, and have can be found at <http://ifrc.org/en/publications-and-reports/appeals/>.

The **Guinea EVD Appeal** has been revised and now seeks a total of CHF 56 million (increased from CHF 28.6 million), and has been extended to December 2017. This amount includes CHF 23 million to enable the IFRC to continue its support to GRC in the implementation of essential EVD response activities and to increase the scope of recovery assistance and support to EVD-affected populations.

Following a revision, the **Liberia EVD Appeal** now seeks a total of CHF 46.3 million (increased from CHF 24.5 million). This amount includes CHF 27.7 million to enable the IFRC to continue to support the Liberian National Red Cross Society (LNRCS) maintain response capacity while increasing the scope of recovery assistance and support to EVD-affected populations. With available resources (including bilateral) of some CHF 22 million, the net Appeal needs are CHF 24.2 million, to be implemented until December 2017.

The **Sierra Leone EVD Appeal** has been revised and now seeks a total of CHF 94.6 million (increased from CHF 56.8 million). This amount includes CHF 44 million that will enable the IFRC to support the Sierra Leone Red Cross Society (SLRCS) to deliver recovery assistance and support to EVD-affected populations (including EVD survivors; orphans and vulnerable children; affected households; Red Cross and community volunteers). With available resources (including bilateral) of some CHF 50.7 million, the net Appeal needs are CHF 46.2 million to be implemented over a total timeframe of 45 months. The revised appeal has a focus on (i) disaster risk reduction; (ii) health and care (CBH, PSS, case management, water and sanitation); (ii) food security and livelihoods; and (iv) National Society development, through community and institutional development strategies.

## Regional Coordination and Preparedness

### *West Africa Preparedness Project*

Preparedness, prevention and response capacity is being strengthened across the region through a beneficiary communications and social mobilization project, which is being funded by the European Union.

This project is being led by National Societies in ten countries across West Africa, including Benin, Burkina Faso, Cote d'Ivoire, Gambia, Ghana, Guinea-Bissau, Mali, Nigeria, Senegal and Togo, and is designed to break the chain of transmission of EVD and other prevalent epidemic threats in West Africa through effective social mobilization, community engagement and beneficiary communications activities. A number of Partner National Societies are involved in the programme, including the Danish, Swiss, Spanish and Netherlands Red Cross National Societies, and these partners will work with National Societies in the targeted countries to enhance community understanding, engagement, ownership and implementation of prevention, preparedness and control measures, while also strengthening regional coordination and technical support to ensure a well-coordinated and harmonised response.

A Beneficiary Communications Boot Camp was held in Accra from 8 - 11 June, which brought together 75 participants from 13 West African National Societies and Partner National Societies from Denmark, the Netherlands, Spain and Switzerland. The boot camp provided an opportunity for beneficiary communications teams from Ebola affected countries to share experience with their Movement colleagues in non-affected countries to strengthen regional prevention of Ebola. The boot camp focused on Beneficiary communications theory, model and processes, as well as their use in conflict management during crises, and participants were given an opportunity to put this knowledge into practice during a one-day simulation, which was supported by 80 volunteers from the Ghana Red Cross Society.

#### *Preparedness in at-risk border area between Guinea and Guinea-Bissau*

In the four consecutive weeks to 1 July 2015, the prefecture of Bokè, bordering Guinea-Bissau, has recorded 22 of the 42 cases (52%) confirmed across the country. On both sides of the border, IFRC is supporting National Society colleagues to implement emergency response and preparedness measures. In Guinea-Bissau, the IFRC Beneficiary Communications Officer has finalised an agreement with Radio Gandal (104.7 FM) for an interactive radio show which will cover 700 villages in the region of Gabu, and has a reach up to 25km into Guinea and 30 km into Senegal. The 45 minute radio interactive show will be conducted in the three local languages: Fula, Mandinga and Creole.

In Guinea, following the recommendations of the Guinea Red Cross National Ebola Health Coordinator, community engagement and surveillance will be enhanced through the deployment of a mobile radio station, Santeyah FM, to the border of Dabiss, which will broadcast interactive radio shows in the local languages. Community Epidemic Response Teams are also being rapidly established to undertake surveillance and social mobilization activities in villages along the border.

Cross-border meetings have commenced, and National Societies in Guinea and Guinea-Bissau have met to share information and discuss coordinated approaches and activities. Mapping is being undertaken in the localities of Gabou and Tombali in Guinea-Bissau to identify the most suitable temporary operational bases for SDB teams, where stock can be prepositioned and decontamination can occur if SDB activities commence. An IFRC/NS preparedness team will be based at these temporary bases, comprising of technical personnel specialized in water and sanitation, logistics, and safe and dignified burials, using USAID/DART funding. Two trained SDB teams from Guinea-Bissau will be deployed to work with SDB teams in Bokè in Guinea to get some field experience.

## Movement Coordination

### *Bilateral Contributions*

A number of Partner National Societies have provided bilateral support to the affected countries, as well as preparedness activities in surrounding countries, including:

<b>Partner National Societies' bilateral contributions in West Africa</b>			
Guinea	Liberia	Sierra Leone	Surrounding countries
French Red Cross	Austrian Red Cross	Austrian Red Cross	Belgian Red Cross
Belgian Red Cross	American Red Cross	Belgian Red Cross	British Red Cross
Botswana Red Cross	Botswana Red Cross	Botswana Red Cross	Canadian Red Cross
Canadian Red Cross	Canadian Red Cross	Canadian Red Cross	Danish Red Cross
Danish Red Cross	Danish Red Cross	Finnish Red Cross	French Red Cross
Spanish Red Cross	German Red Cross	Iranian Red Cross	Iranian Red Cross
	Spanish Red Cross	Norwegian Red Cross	Netherlands Red Cross
		Spanish Red Cross	Spanish Red Cross
			Swiss Red Cross

## Funding

On behalf of the National Societies in the Ebola affected countries, the IFRC Secretariat would like to thank the following for all their contributions to the Ebola Emergency Appeals: American Red Cross and US government, Andorran Red Cross, Australian Red Cross and Australian government, Austrian Red Cross and Austrian government, Belgian government, British Red Cross and British government, Canadian Red Cross and Canadian government, Red Cross Society of China Hong Kong branch, Czech government, Danish Red Cross and Danish government, European Commission – DG ECHO, Finnish Red Cross and Finnish government, French Red Cross, German Red Cross, Icelandic Red Cross and Icelandic government, Red Crescent Society of the Islamic Republic of Iran, Irish Red Cross, Italian government, Japanese Red Cross and Japanese government, Kenyan Red Cross, Korean Red Cross, Monaco Red Cross and Monaco government, Netherlands Red Cross and Netherlands government, Norwegian Red Cross, Philippine Red Cross, Portuguese Red Cross, Qatar Red Crescent, Spanish Red Cross and Spanish government, Swedish Red Cross and Swedish government, Swiss Red Cross and Swiss government, Taiwan Red Cross Organization, UNICEF, and the International Committee of Red Cross (ICRC). In addition, the IFRC Secretariat would like to thank the following foundations and corporate partners for their contributions: Bill and Melinda Gates Foundation, Airbus, International Federation of Freight Forwarders Association, KPMG, Nestle, Nethope Inc, Shell, Sime Darby Berhad, Tullow Guinea Limited and World Cocoa Foundation.

## Contact Information

### For further information please contact:

- **IFRC Africa Zone:** Alasan Senghore, Zone Director, Nairobi; Tel : +254 (0) 20 2835000;  
Email: [alasan.senghore@ifrc.org](mailto:alasan.senghore@ifrc.org)
- **IFRC Africa Zone:** Daniel Bolanos, Disaster Management Coordinator for Africa; Nairobi;  
Tel: +254 (0) 731 067489; Email: [Daniel.Bolanos@ifrc.org](mailto:Daniel.Bolanos@ifrc.org)
- **IFRC Ghana:** Norbert Allale, Ebola Regional Operations Coordinator; Mob Accra: +233 (0) 266 444 141 ; Mob Guinea: +224 (0) 628 345 159; Roaming: +221 (0) 777 406 205; Email: [norbert.allale@ifrc.org](mailto:norbert.allale@ifrc.org)
- **IFRC Guinea:** Aliou Boly, Country Representative, Conakry. Tel: +224 (0) 621 880 995; Email: [Aliou.boly@ifrc.org](mailto:Aliou.boly@ifrc.org)
- **IFRC Guinea:** Oscar Llorente, Ebola Operation Manager, Conakry; Tel: +224 (0) 623 629 430; Email: [Oscar.llorente@ifrc.org](mailto:Oscar.llorente@ifrc.org)
- **IFRC Liberia:** Mesfin Abay, Country Representative; Tel: +231 (0) 880 528 771; Email: [mesfin.abay@ifrc.org](mailto:mesfin.abay@ifrc.org)
- **IFRC Liberia:** Ademola Alao, Ebola Operation Manager, Monrovia, el: +231 (0) 775773562;  
Email: [ademola.alao@ifrc.org](mailto:ademola.alao@ifrc.org)
- **IFRC Sierra Leone:** Moulaye Camara, Country Representative, Freetown; Tel: +232 (0) 792 367 95;  
Email: [moulaye.camara@ifrc.org](mailto:moulaye.camara@ifrc.org)  
**IFRC Sierra Leone:** Andrew Jarjou, Ebola Operations Manager, Freetown. Tel:+232 (0) 767 381 16; Email: [Andrew.jarjou@ifrc.org](mailto:Andrew.jarjou@ifrc.org)
- **IFRC Nigeria:** Samuel Matoka, Ebola Operation Manager; Lagos; Tel: +234 817 3333 212;  
email: [Samuel.matoka@ifrc.org](mailto:Samuel.matoka@ifrc.org)
- **IFRC Senegal:** Aissa Fall, Regional Health Manager, Dakar; Email: [Aissa.Fall@ifrc.org](mailto:Aissa.Fall@ifrc.org)
- **IFRC Geneva:** Cristina Estrada, Senior Officer Operations Quality Assurance; Tel: +41.22.730.4260; Email: [cristina.estrada@ifrc.org](mailto:cristina.estrada@ifrc.org)
- **IFRC Zone Logistics Unit (ZLU):** Rishi Ramrakha, Head of Zone Logistics Unit; Tel: +254 (0) 733 888 022/  
Fax +254 20 271 2777; Email: [rishi.ramrakha@ifrc.org](mailto:rishi.ramrakha@ifrc.org)

### For Resource Mobilization and Pledges:

- **IFRC Ghana:** Terry Carney, Ebola Resource Mobilization Coordinator; Tel: +233 (0) 266 444 147  
Email: [terry.carney@ifrc.org](mailto:terry.carney@ifrc.org) . Please send all pledges for funding to [zonerm.africa@ifrc.org](mailto:zonerm.africa@ifrc.org)

### For Performance and Accountability (planning, monitoring, evaluation and reporting):

- **IFRC Ghana:** Nova Wilks, Regional Reporting Coordinator; Tel: +233 (0) 266 444 187;  
Email: [nova.wilks@ifrc.org](mailto:nova.wilks@ifrc.org)

## How we work

All IFRC assistance seeks to adhere to the Code of Conduct for the International Red Cross and Red Crescent Movement and Non-Governmental Organizations (NGOs) in Disaster Relief and the Humanitarian Charter and Minimum Standards in Disaster Response (Sphere) in delivering assistance to the most vulnerable.

The IFRC's vision is to inspire, encourage, facilitate and promote at all times all forms of humanitarian activities by National Societies, with a view to preventing and alleviating human suffering, and thereby contributing to the maintenance and promotion of human dignity and peace in the world.

[www.ifrc.org](http://www.ifrc.org)  
Saving lives, changing minds.



The IFRC's work is guided by Strategy 2020 which puts forward three strategic aims:

1. Save lives, protect livelihoods, and strengthen recovery from disaster and crises.
2. Enable healthy and safe living.
3. Promote social inclusion and a culture of non-violence and peace.

# Donor response

## Ebola Emergency Appeals Consolidation

TIMEFRAME: 2014-2015

TOTAL AMOUNT SOUGHT:	215,747,991
TOTAL RECEIVED TO DATE:	114,156,272
APPEAL COVERAGE TO DATE:	53%

	Cash contributions	Inkind Goods & Transport	Inkind Personnel	Other Income	Total
	CHF	CHF	CHF	CHF	CHF
<b>BUDGET</b>					<b>215,747,991</b>
<b>FUNDING</b>					
<b>Opening Balance</b>					
<b>Income</b>					
Airbus	65,256			-3,263	61,993
American Red Cross	3,404,274				3,404,274
Andorran Red Cross	6,153				6,153
Australian Government	50,441				50,441
Australian Red Cross	450,148		65,515		515,663
Austrian Red Cross (from Austrian Government)	1,165,159				1,165,159
Belgian Federal Government	2,407,190				2,407,190
Bill & Melinda Gates Foundation	2,872,958				2,872,958
British Red Cross	883,195	300	71,326		954,820
British Red Cross (from Band Aid)	143,333				143,333
British Red Cross (from British Government)	20,135,019		69,820	573	20,205,412
British Red Cross (from Children's Investment Fund Foundation)	6,723,819				6,723,819
British Red Cross (from DEC (Disasters Emergency Committee))	2,450,598				2,450,598
Canadian Red Cross	353,964		70,593		424,557
Canadian Red Cross (from Canadian Government)	4,250,130		72,294		4,322,424
China Red Cross, Hong Kong branch	72,813				72,813
Czech Government	130,033				130,033
Danish Red Cross	50,000		220,486		270,486
Danish Red Cross (from Danish Government)	77,557				77,557
DFID Partnership Allocations				-720,259	-720,259
European Commission - DG ECHO	4,842,813				4,842,813
European Commission – FPI	6,296,562				6,296,562
FIATA-Intl Fed Freight Forwarders Assoc.	42,125				42,125
Finnish Red Cross	153,004	162,531	47,945		363,481
Finnish Red Cross (from Finnish Government)	1,117,480				1,117,480
French Red Cross	14,835		12,450		27,286
French Red Cross (from Total)	359,314				359,314
German Red Cross	21,387				21,387
Guinea - Private Donors	7,423				7,423
Icelandic Red Cross	874,155				874,155
Icelandic Red Cross (from Icelandic Government)	195,600				195,600
ICRC	10,000				10,000
Irish Red Cross Society	62,845		5,035		67,880
Israel - Private Donors	9,653				9,653
Italian Government Bilateral Emergency Fund (from Italian Government)	1,203,910				1,203,910
Italian Red Cross	208,122				208,122
Japanese Government	13,818,036				13,818,036
Japanese Red Cross Society	792,417				792,417
Kenya Red Cross Society			16,467		16,467
KPMG International Cooperative(KPMG-I)	128,741			-6,437	122,304
Luxembourg - Private Donors	2,824				2,824
Monaco Government	24,030				24,030

	Cash contributions	Inkind Goods & Transport	Inkind Personnel	Other Income	Total
	CHF	CHF	CHF	CHF	CHF
<b>BUDGET</b>					<b>215,747,991</b>
<b>FUNDING</b>					
<b>Opening Balance</b>					
<b>Income</b>					
Nestle	42,000			-2,100	39,900
Nethope INC.	137,020				137,020
New Zealand Red Cross			46,797		46,797
Norwegian Red Cross	93,972		28,663		122,635
On Line donations	88,607				88,607
Philippine Red Cross	24,110				24,110
Portuguese Red Cross	1,804				1,804
Qatar Red Crescent Society	9,501				9,501
Red Crescent Society of Islamic Republic of Iran	35,000				35,000
Red Cross of Monaco	109,842				109,842
Shell	61,599			-3,080	58,519
Sime Darby Berhad	142,332			-7,117	135,215
Spanish Government	6,239,698				6,239,698
Spanish Red Cross	284,955	4,050	7,924		296,929
Sundry Income				7,882	7,882
Swedish Red Cross	3,084,759				3,084,759
Swiss Red Cross	327,557	127,872	20,173		475,602
Swiss Red Cross (from Swiss Government)	3,500,000				3,500,000
Switzerland - Private Donors	1,407				1,407
Taiwan Red Cross Organisation	26,415				26,415
The Netherlands Red Cross	1,899,921	204,407			2,104,328
The Netherlands Red Cross (from Netherlands Government)	3,860,836				3,860,836
The Netherlands Red Cross (from Netherlands Red Cross Silent Emergency Fund)	100,715				100,715
The Republic of Korea National Red Cross	60,000				60,000
The Thai Red Cross Society (from Taiwan Red Cross Organisation)	199,676				199,676
Toyota Motor Corp.	19,102				19,102
Tullow Guinea Limited	181,376			-9,069	172,307
UNICEF - United Nations Children's Fund	219,664	541,093			760,757
Unidentified donor	936				936
United States Government - USAID	15,839,780		287,647	26,091	16,153,518
World Cocoa Foundation	319,761				319,761
<b>Total Income</b>	<b>112,789,661</b>	<b>1,040,253</b>	<b>1,043,135</b>	<b>-716,778</b>	<b>114,156,272</b>
<b>TOTAL FUNDING</b>					<b>114,156,272</b>
<b>COVERAGE</b>					<b>53%</b>

**ADDITIONAL CONTRIBUTIONS TO THE OPERATION (based on information Logistics received from partners)**

	Total
	CHF
<b>Bilateral Contributions</b>	
American Red Cross	38,148
British Red Cross	3,123
Canadian Red Cross	660,710

Total

CHF

---

**Bilateral Contributions**

Danish Red Cross	25,089
Finnish Red Cross	155,627
French Red Cross	20,000
German Red Cross	845,560
Norwegian Red Cross	488,004
Spanish Red Cross	563,590
Swiss Red Cross	39,500
<b>Total Bilateral Contributions</b>	<b>2,839,350</b>

---

# Donor response

## Ebola Emergency Appeals Consolidation, by Appeal

TIMEFRAME: 2014-2015

TOTAL AMOUNT SOUGHT	215,747,991
TOTAL RECEIVED TO DATE	114,156,272
APPEAL COVERAGE TO DATE	53%

	MDR60002	MDRGN007	MDRLR001	MDRNG017	MDRSL005	MDRSN010	Total
	Africa	Guinea	Liberia	Nigeria	Sierra Leone	Senegal	CHF
<b>BUDGET</b>	<b>15,882,441</b>	<b>56,016,354</b>	<b>46,253,362</b>	<b>1,619,444</b>	<b>94,595,428</b>	<b>1,380,962</b>	<b>215,747,991</b>
<b>FUNDING</b>							
<u>Opening Balance</u>							
<b>Income</b>							
Airbus		65,256					65,256
American Red Cross	242,784	1,400,883	451,884		1,308,722		3,404,274
Andorran Red Cross	6,153						6,153
Australian Government				50,441			50,441
Australian Red Cross	87,106	68,649	81,647		212,746		450,148
Austrian Red Cross (from Austrian Government)		582,579	582,579				1,165,159
Belgian Federal Government			2,407,190				2,407,190
Bill & Melinda Gates Foundation		909,770	909,770		1,053,418		2,872,958
British Red Cross	174,210	41,805	130,324		461,541	75,314	883,195
British Red Cross (from Band Aid)		143,333					143,333
British Red Cross (from British Government)			298,311		19,836,708		20,135,019
British Red Cross (from Children's Investment Fund Foundation)		2,582,799	2,375,879		1,765,141		6,723,819
British Red Cross (from DEC (Disasters Emergency Committee))		1,009,716	170,484		1,270,399		2,450,599
Canadian Red Cross	83,983				269,981		353,964
Canadian Red Cross (from Canadian Government)	495,732	1,803,249	921,493	58,969	924,437	46,250	4,250,130
China Red Cross, Hong Kong branch			72,813				72,813
Czech Government					130,033		130,033
Danish Red Cross	50,000						50,000
Danish Red Cross (from Danish Government)		77,557					77,557
European Commission - DG ECHO	778,278	1,798,936	1,162,530	114,679	988,390		4,842,813
European Commission – FPI	6,296,562						6,296,562
FIATA-Intl Fed Freight Forwarders Assoc.		29,541			12,584		42,125
Finnish Red Cross		73,261	55,338		24,406		153,004
Finnish Red Cross (from Finnish Government)	144,259	417,469	288,815		266,936		1,117,480

	MDR60002	MDRGN007	MDRLR001	MDRNG017	MDRSL005	MDRSN010	Total
	Africa	Guinea	Liberia	Nigeria	Sierra Leone	Senegal	CHF
<b>BUDGET</b>	<b>15,882,441</b>	<b>56,016,354</b>	<b>46,253,362</b>	<b>1,619,444</b>	<b>94,595,428</b>	<b>1,380,962</b>	<b>215,747,991</b>
<b>FUNDING</b>							
<b>Opening Balance</b>							
<b>Income</b>							
French Red Cross		14,835					14,835
French Red Cross (from Total)			179,657		179,657		359,314
German Red Cross	21,387						21,387
Guinea - Private Donors		7,423					7,423
Icelandic Red Cross	160,000				714,155		874,155
Icelandic Red Cross (from Icelandic Government)					195,600		195,600
ICRC	10,000						10,000
Irish Red Cross Society	62,845						62,845
Israel - Private Donors	9,653						9,653
Italian Government Bilateral Emergency Fund (from Italian Government)					1,203,910		1,203,910
Italian Red Cross	208,122						208,122
Japanese Government	671,527	7,763,538	3,972,226		1,410,745		13,818,036
Japanese Red Cross Society	87,579	202,012	201,895	53,400	201,932	45,600	792,417
KPMG International Cooperative(KPMG-I)	20,120	43,924	32,349		32,348		128,741
Luxembourg - Private Donors	2,824						2,824
Monaco Government	24,030						24,030
Nestle		42,000					42,000
Nethope INC.		45,673	45,673		45,673		137,020
Norwegian Red Cross			51,244		42,728		93,972
On Line donations	88,607						88,607
Philippine Red Cross	24,110						24,110
Portuguese Red Cross		1,804					1,804
Qatar Red Crescent Society	9,501						9,501
Red Crescent Society of Islamic Republic of Iran		25,000			10,000		35,000
Red Cross of Monaco	28,191	18,213	12,142	18,096	18,097	15,102	109,842
Shell				61,599			61,599
Sime Darby Berhad			142,332				142,332
Spanish Government	753,067		1,613,715		3,872,916		6,239,698
Spanish Red Cross					284,955		284,955
Swedish Red Cross		1,021,899	1,299,160		763,700		3,084,759

	MDR60002	MDRGN007	MDRLR001	MDRNG017	MDRSL005	MDRSN010	Total
	Africa	Guinea	Liberia	Nigeria	Sierra Leone	Senegal	CHF
<b>BUDGET</b>	<b>15,882,441</b>	<b>56,016,354</b>	<b>46,253,362</b>	<b>1,619,444</b>	<b>94,595,428</b>	<b>1,380,962</b>	<b>215,747,991</b>
<b>FUNDING</b>							
<b>Opening Balance</b>							
<b>Income</b>							
Swiss Red Cross	19,245				308,312		327,557
Swiss Red Cross (from Swiss Government)		800,000	1,000,000		1,700,000		3,500,000
Switzerland - Private Donors	1,407						1,407
Taiwan Red Cross Organisation		26,415					26,415
The Netherlands Red Cross	130,370	1,111,621	583,601		74,329		1,899,921
The Netherlands Red Cross (from Netherlands Government)	965,448	723,726	723,726	241,651	1,206,285		3,860,836
The Netherlands Red Cross (from Netherlands Red Cross Silent Emergency Fund)		48,840			51,875		100,715
The Republic of Korea National Red Cross		30,000		30,000			60,000
The Thai Red Cross Society (from Taiwan Red Cross Organisation)	199,676						199,676
Toyota Motor Corp.					19,102		19,102
Tullow Guinea Limited		181,376					181,376
UNICEF - United Nations Children's Fund	45,020		174,644				219,664
Unidentified donor		700	236				936
United States Government - USAID		2,809,758	930,648		12,099,375		15,839,780
World Cocoa Foundation	138,598	181,163					319,761
<b>Cash contributions</b>	<b>12,040,393</b>	<b>26,104,726</b>	<b>20,872,304</b>	<b>628,835</b>	<b>52,961,136</b>	<b>182,266</b>	<b>112,789,661</b>
British Red Cross		100	100		100		300
Finnish Red Cross					162,531		162,531
Spanish Red Cross					4,050		4,050
Swiss Red Cross					127,872		127,872
The Netherlands Red Cross		30,078	11,790		162,539		204,407
UNICEF - United Nations Children's Fund			541,093				541,093
<b>Inkind Goods &amp; Transport</b>		<b>30,178</b>	<b>552,983</b>		<b>457,092</b>		<b>1,040,253</b>
Australian Red Cross			65,515				65,515
British Red Cross		2,452	68,874				71,326
British Red Cross (from British Government)					69,820		69,820
Canadian Red Cross	6,230	20,348			44,015		70,593

	MDR60002	MDRGN007	MDRLR001	MDRNG017	MDRSL005	MDRSN010	Total
	Africa	Guinea	Liberia	Nigeria	Sierra Leone	Senegal	CHF
<b>BUDGET</b>	<b>15,882,441</b>	<b>56,016,354</b>	<b>46,253,362</b>	<b>1,619,444</b>	<b>94,595,428</b>	<b>1,380,962</b>	<b>215,747,991</b>
<b>FUNDING</b>							
<b>Opening Balance</b>							
<b>Income</b>							
Canadian Red Cross (from Canadian Government)	26,939	45,355					72,294
Danish Red Cross			220,486				220,486
Finnish Red Cross	21,245		26,700				47,945
French Red Cross		12,450					12,450
Irish Red Cross Society			5,035				5,035
Kenya Red Cross Society			16,467				16,467
New Zealand Red Cross			46,797				46,797
Norwegian Red Cross					28,663		28,663
Spanish Red Cross					7,924		7,924
Swiss Red Cross					20,173		20,173
United States Government - USAID					287,647		287,647
<b>Inkind Personnel</b>	<b>54,414</b>	<b>80,605</b>	<b>449,874</b>		<b>458,242</b>		<b>1,043,135</b>
Airbus		-3,263					-3,263
British Red Cross (from British Government)					573		573
DFID Partnership Allocations	-720,259						-720,259
KPMG International Cooperative(KPMG-I)	-1,006	-2,196	-1,617		-1,617		-6,437
Nestle		-2,100					-2,100
Shell				-3,080			-3,080
Sime Darby Berhad			-7,117				-7,117
Sundry Income		3			7,880		7,882
Tullow Guinea Limited		-9,069					-9,069
United States Government - USAID					26,091		26,091
<b>Other Income</b>	<b>-721,265</b>	<b>-16,625</b>	<b>-8,734</b>	<b>-3,080</b>	<b>32,926</b>		<b>-716,778</b>
<b>Total Income</b>	<b>11,373,543</b>	<b>26,198,884</b>	<b>21,866,427</b>	<b>625,755</b>	<b>53,909,397</b>	<b>182,266</b>	<b>114,156,272</b>
<b>TOTAL FUNDING</b>	<b>11,373,543</b>	<b>26,198,884</b>	<b>21,866,427</b>	<b>625,755</b>	<b>53,909,397</b>	<b>182,266</b>	<b>114,156,272</b>
<b>COVERAGE</b>	<b>72%</b>	<b>47%</b>	<b>47%</b>	<b>39%</b>	<b>57%</b>	<b>13%</b>	<b>53%</b>

ADDITIONAL CONTRIBUTIONS TO THE OPERATION (based on information Logistics received from partners)

	MDR60002	MDRGN007	MDRLR001	MDRNG017	MDRSL005	MDRSN010	Total
	Africa	Guinea	Liberia	Nigeria	Sierra Leone	Senegal	CHF
<b><u>Bilateral Contributions</u></b>							
American Red Cross					38,148		38,148
British Red Cross					3,123		3,123
Canadian Red Cross					660,710		660,710
Danish Red Cross					25,089		25,089
Finnish Red Cross					155,627		155,627
French Red Cross		20,000					20,000
German Red Cross					845,560		845,560
Norwegian Red Cross					488,004		488,004
Spanish Red Cross					563,590		563,590
Swiss Red Cross		39,500					39,500
<b>Total Bilateral Contributions</b>		<b>59,500</b>			<b>2,779,850</b>		<b>2,839,350</b>

# EBOLA

At a glance

Refreshed on 07-Jul-2015 at 14:58

## EMERGENCY APPEALS

Appeal Code	Appeal Name	Appeal Timeframe		Budget	Funding	Coverage	Gap	Income	DREF	Expenditure	Balance	Commitments	Exp/Bud
MDR60002	Africa - Ebola Coordination and prep	19-Aug-14	31-Dec-15	15,882,441	11,419,247	72%	4,463,194	11,419,247		4,081,349	7,337,898	1,198,018	26%
MDRGN007	Guinea - Ebola Virus Disease	26-Mar-14	31-Dec-17	56,016,354	26,227,461	47%	29,788,893	26,221,137	0	13,597,872	12,623,264	4,003,784	24%
MDRLR001	Liberia - Ebola Virus Disease	09-Apr-14	31-Dec-17	46,253,362	21,880,184	47%	24,373,178	21,818,280	0	11,294,173	10,524,107	686,138	24%
MDRNG017	Nigeria - Ebola Virus Disease	08-Aug-14	31-May-15	1,619,444	625,755	39%	993,689	625,755	0	623,524	2,231	45,200	39%
MDRSL005	Sierra Leone - Ebola Virus Disease	06-Apr-14	31-Dec-17	94,595,428	54,033,492	57%	40,561,936	53,929,135	0	30,993,996	22,935,140	6,622,733	33%
MDRSN010	Senegal - Ebola Virus Disease	08-Sep-14	31-May-15	1,380,962	182,266	13%	1,198,696	182,266	253515	388,447	47,335		28%
<b>TOTAL EMERGENCY APPEALS</b>				<b>215,747,991</b>	<b>114,368,405</b>	<b>53%</b>	<b>101,379,586</b>	<b>114,195,821</b>	<b>253,515</b>	<b>60,979,362</b>	<b>53,469,975</b>	<b>12,555,874</b>	<b>28%</b>

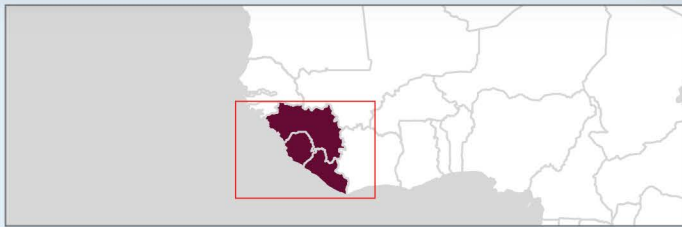
## DREF OPERATIONS

Appeal Code	Appeal Name	Appeal Timeframe		Budget	Funding	Coverage	Gap	Income	DREF	Expenditure	Balance	Commitments	Exp/Bud
MDR42002	Americas - Ebola Preparedness	21-Oct-14	21-Jan-15	100,000	0	N/A	0	0	100000	85,549	14,451		86%
MDR64007	East Africa - Ebola Preparedness	10-Feb-15	26-Jul-15	181,050	181,050	N/A	0	181,050		62,615	118,435	24,470	35%
MDR80001	MENA ZONE - Ebola Preparedness	05-Feb-15	05-May-15	119,324	119,324	N/A	0	119,324		66,733	52,591		56%
MDRBJ014	Benin - Ebola Virus Disease	27-Aug-14	27-Nov-14	50,204	0	N/A	0	0	35250.41	35,250	0		70%
MDRCF018	Central African Rep - Ebola Virus Di	29-Aug-14	29-Dec-14	48,697	0	N/A	0	0	33725.67	33,726	0		69%
MDRCI006	Côte d'Ivoire - Ebola Preparedness	18-Apr-14	18-Jul-14	60,950	0	N/A	0	0	59919.04	59,919	0		98%
MDRCI007	Côte d'Ivoire - Ebola Preparedness	23-Apr-15	23-Oct-15	360,000	360,000	N/A	0	360,000		12,742	347,258		4%
MDRCM019	Cameroon - Ebola Virus Disease	24-Aug-14	25-Jan-15	49,922	0	N/A	0	0	34980.87	34,981	0		70%
MDRET014	Ethiopia - Ebola Virus Preparedness	29-Oct-14	29-Mar-15	46,641	0	N/A	0	0	39218.26	39,218	0		84%
MDRGM009	Gambia - Ebola Virus Disease Prepare	15-Sep-14	30-Jan-15	46,856	0	N/A	0	0	39712.49	39,712	0		85%
MDRGW002	Guinea Bissau - Ebola Virus Prepared	08-Oct-14	08-Jan-15	49,168	0	N/A	0	0	39436.54	39,437	0		80%
MDRKE031	Kenya - Ebola Virus Disease Prepared	23-Sep-14	23-Dec-14	59,127	0	N/A	0	0	59127	37,413	21,714		63%
MDRML010	Mali - Ebola Preparedness	18-Apr-14	31-Aug-14	57,715	0	N/A	0	0	50131.66	50,132	0		87%
MDRML011	Mali - Ebola Preparedness	19-Feb-15	19-Aug-15	59,882	59,885	N/A	0	59,885		46,507	13,378		78%
MDRSN009	Senegal - Ebola Virus Disease	11-Apr-14	24-Aug-14	54,848	0	N/A	0	0	53627.34	53,627	0		98%
MDRTD013	Chad - Ebola Virus Disease Preparedn	12-Sep-14	12-Dec-14	54,766	0	N/A	0	0	22923.93	22,924	0		42%
MDRTG005	Togo - Ebola Virus Disease	27-Aug-14	27-Nov-14	49,530	0	N/A	0	0	38127.35	38,127	0		77%
<b>TOTAL DREF OPERATIONS</b>				<b>1,448,680</b>	<b>720,259</b>	<b>N/A</b>	<b>0</b>	<b>720,259</b>	<b>606,181</b>	<b>758,612</b>	<b>567,827</b>	<b>24,470</b>	<b>52%</b>

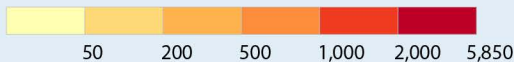
# West Africa Ebola Outbreak

## Cumulative Cases

29 June 2015



### Total Cases



Country	Cases	Deaths	TOTAL
Guinea	3,745	2,490	
Liberia	10,666	4,806	Cases 27,540
Sierra Leone	13,129	3,933	Deaths 11,229

Country-level and total cases/deaths sourced from WHO SitRep July 03

Map distribution date: 03 July 2015

New cases and deaths include "Probable/Suspected" and "Confirmed"

Sources: GADM, Natural Earth, STEWARD Project, Africa Albers Equal Area Conic Projection, WGS 1984; Guinea - Organisation mondiale de la Sante; Liberia - Ministry of Health and Social Welfare; Sierra Leone - Ministry of Health and Sanitation

Information is subject to revision as more data becomes available.

GLIDE #: EP-2014-000039-GIN/LBR/SLE



International Federation of Red Cross and Red Crescent Societies

Produced by SIMS, Supported by the American Red Cross and the British Red Cross

