

www.ifrc.org  
Saving lives,  
changing minds.

# Emergency appeal operations update

## Niger: Population Movement

 International Federation  
of Red Cross and Red Crescent Societies

Emergency Appeal n°  
MDRNE013

Glide n° [OT-2014-000126-  
NER](#)

**50,000 people to be assisted**

**CHF 851,786 Revised Appeal  
budget**

**CHF 479,044 current funding  
gap**

**Launched 18 September 2014**

**First revision July 2015**

**Appeal ends 31 December 2015  
(extended from June 2015)**

This **Operations Update** n° 4 announces a revision in the Emergency Appeal, with a budget reduced to a total of **CHF 851,786** (decreased from CHF 1m) to enable the IFRC to support the **Niger Red Cross Society (NRCS)** to deliver assistance to a total of **50,000 beneficiaries** (decreased from 80,000), and extending the operation for an additional **six months** (to December 2015). This revision is largely due to the deterioration of the security situation in Diffa region and a resulting lack of access preventing the planned implementation resulting in some activities unachieved. This revision will enable the NRCS to address the initial and new unmet needs according to the current security situation in the new zone of intervention in Diffa and prioritizing the following sectors: **health and care; water, sanitation, and hygiene promotion; food security, nutrition, and livelihoods; shelter and household items; and National Society capacity building**. With CHF 372,742 available resources received, the net request is **CHF 479,044**.

[Click here for revised Emergency Plan of Action](#)

## The disaster and the Red Cross Red Crescent response to date

**July 2014:** Large numbers of displaced persons begin arriving in Niger's Diffa region from Northern Nigeria, many in a critical situation. Host communities are not able to cope with the situation and resources were exhausted. The region also experienced a rainfall shortage since May 2013, affecting farming and food security. Access to water, sanitation and primary health care is at a critical level and immediate humanitarian assistance is required.

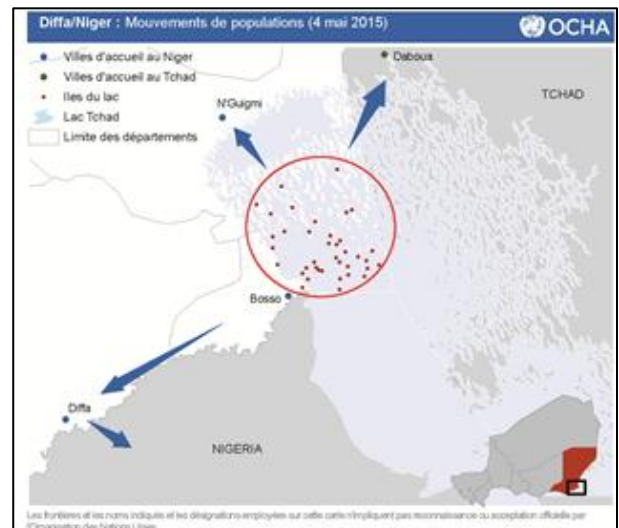
**September 2014:** CHF 170,000 DREF allocated to support the National Society, and Emergency Appeal launched for CHF 1,062,406.

**September – November 2014:** Further large-scale movements of people seeking protection and assistance.

**December 2014:** Niger Prime Minister declares a humanitarian emergency situation in Diffa region and calls upon humanitarian partners for their assistance to more than 105,000 displaced people from Nigeria and the host population.

**January and February 2015:** Further clashes provoke spontaneous internal population movements; humanitarian activities temporary suspended to avoid risks of volunteers and beneficiaries (security reasons).

**May 2015:** IFRC decision to revise and extend the operation given the challenging security situation, lack of access, and delayed implementation



**June and July 2015:** State of emergency extended by government in Diffa Region until least July. Revised Emergency Appeal issued July 2015 for a total of CHF 851,786 (CHF 479,044 net request) for a reduced caseload of 50,000 people, and Appeal extended to December 2015.

[<click here for the contact details and here for revised budget >](#)

## Operational implementation

Since the appeal was launched (September 2014) key activities have been implemented in the sectors of health, water and sanitation activities in Baroua and Gagamari zones. Community volunteers have been trained and provided with materials and tools to facilitate community sensitization (66 volunteers from Baroua (islands) and 34 from Gagamari). For Baroua zone, volunteers started the community sensitization immediately after training, reaching 16 out of 30 islands with sensitization sessions with 5,558 people from the islands sensitised.



**Niger Red Cross Society food distribution. Photo: NRCS**

Weekly mobile clinics have been organized in the islands to assist those who cannot access the health centres, using 2 purchased boats to facilitate access to the islands. Through the existing partnership and cooperation agreement with WHO, an International Emergency Health Kit (IEHK) was provided to assist the patients from the islands (host and displaced) who cannot easily access health services. Between November 2014 and end January 2015, 6 mobile clinics have been organized and 5,630 persons were provided with medical treatment. The islands reached were Kadeiram, Tchoukou Gabi, Karrounn, Arina, Kadia, Gadarmou, Klakmana, Kourna, Chilla, and Douwa.

Responding to the influx from Damassak to the Gagamari transitional camp, emergency support was provided in the form of water, hygiene and sanitation. Twelve (12) public emergency latrine blocs have been installed in the camp along with a pump providing 24,000 litres of potable water per day, reinforced by 2 bladders of water (4,000 litres each). Four volunteers were trained on water distribution to the displaced population (3 times a day) while providing sensitization messages on hygiene and sanitation. To reinforce the hygiene and sanitation sensitisation, 30 volunteers (including 10 from the camp) were trained on hygiene promotion and cholera prevention. Two hand washing kits were installed in the camp (one near the drill and the second near the latrines), 5 waste bins were made available in the camp to allow waste management. According to the Red Cross Diffa branch, 16,000 people located in Gagamari transit camp and Chetimari host villages benefited from awareness and sanitation activities. Overall, 21,558 people from the islands and Gamamari transit camp have been sensitized. These activities took place until 6 February when Diffa was attacked and the population fled to secured areas.

In January and February 2015, two educational sessions, short plays or forums on peace and living together as neighbours were organized in Diffa with the participation of more than 200 persons each. A football match between Nigerian and Nigerien children took place as well.

For food assistance, from October 2014, the National Society distributed food rations on a monthly basis to some 25,000 people. Recovery and livelihoods activities such as the creation of vegetable gardens, construction/equipping of cereal banks, distribution of seeds and livestock, income generating activities have not been implemented due to a lack of funding but remain very crucial and could be implemented during the common lean period (June to November)

Within an existing Memorandum of Understanding (MoU) with UNHCR, the Luxembourg Red Cross is providing temporary shelter in refugees and transit camps. A total of 754 emergency shelters and 1,154

shelters in local material are being provided. In the revised strategy, the IFRC will provide some shelter kits (tarpaulins) to assist the population located in host communities to protect them against the upcoming rainy season. IOM, in cooperation with the Niger Red Cross, is providing shelter for some IDP's. In the revised strategy, the IFRC will provide some shelter kits (tarpaulins) to assist the population located in host communities to protect them against the upcoming rains. The targeted population are the displaced people from the Lake Chad islands primarily consisting of Nigeriens and Nigerians. Beneficiary selection is done during the awareness and nutritional screening campaign in the community. The Luxembourg Red cross will provide technical support to the national Society in installing the shelter, and accessories for this purpose (tent poles, wood, rope and stakes) will be the beneficiaries contribution or provided by the Luxembourg Red Cross or the NRC.

Through the existing Niger Red Cross cooperation agreement with UNFPA, 1,096 hygiene kits were distributed to 1,096 households after sensitising them on health reproductive.

The revised plan also entails 20 volunteers trained in Toumour and Yebi to conduct social mobilization on hygiene promotion, nutrition and health. The volunteers organize their sensitization session on hygiene and water use at the water drilling systems installed by ICRC in various villages. In April, 4,708 people were sensitized in Yebi, while 122 have been reached in Toumour. The number of people reached is relatively low due to the security issues in the zones. The table below summarizes persons sensitized so far:

Zone	N° of people sensitized
Chad Lake islands	5,558
Gagamari transit camp	16,000
Yebi	4,708
Toumour	122
<b>TOTAL</b>	<b>26,338</b>

## The revised operational strategy

**Overall objective:** assist 50,000 beneficiaries with emergency health, water, sanitation and hygiene promotion, and food security, nutrition and livelihoods support.

Based on the joint needs assessments the Movement partners have agreed on the following coordinated approach and roles:

- ICRC (as lead Movement agency in Diffa) will provide food and non-food items, water infrastructures, and health and protection, protection and restoring family links.
- The Luxembourg Red Cross will support the National Society installing the temporary shelter, and sanitation facilities (latrines).
- The IFRC will support the National Society in water and sanitation facilities (latrines, water drilling, sensitization, sanitation, cleaning disinfection), food security support, health and care, epidemic control, nutrition, prevention, risk reduction and livelihoods.

IFRC will continue working closely together and coordinate with other humanitarian actors to provide diverse, adequate and complementary response. UNHCR and IOM are providing protection, NFI and shelter for refugees and IDP's; WFP and Niger authorities will continue assisting with food; UNICEF, WHO and MSF-Spain, and Save the Children are in charge of health WATSAN and nutrition. The majority of these actors and other NGOs intervene mainly in refugees camps or transits sites. The support of ICRC and IFRC to the Niger Red Cross will be directed to the assistance of people outside the camps and transit sites. The assistance of the IFRC is coupled with strengthening the resilience of affected populations and recovery activities as well as the Niger Red Cross Diffa branch capacity building.

### Needs assessment and beneficiary selection

Based on ongoing needs assessment, the priority sectors for assistance are food security, health, nutrition and water and sanitation. With multiple operational actors on the ground, the assessments have also highlighted the vital need for improved coordination to eliminate gaps which exist as humanitarian agencies continue to increase their activities. The health gaps focused on affected persons in the Lake Chad islands, water, sanitation and hygiene promotion needs along the

Komagoudogou River, and food security needs throughout the region. In non-emergency phases, the assessment illustrated the importance of livelihood assistance and building community resilience, including the need for social cultural activities to build cohesion.



**Coordination and partnerships**



The Niger Red Cross has deployed approximately 200 volunteers and a regional emergency response team comprising 25 members to provide assistance alongside the humanitarian actors within and outside the Movement. The National Society has a strong presence in the Diffa region and regularly undertakes long term development and humanitarian programming. The National headquarters staff is experienced in the health and nutrition, food security, water, hygiene and sanitation sectors. The regional branch takes part in the field assessments and participates in crisis meetings with the regional authorities and other humanitarian actors.

The National Society holds regular coordination meetings at the Diffa level with the ICRC, IFRC and Luxembourg Red Cross and has built a common operational plan to provide effective support to the affected persons. At the national level, Movement coordination meetings provide an opportunity to discuss operational plans, agree on respective operations and coordination roles, and to make adjustments accordingly. Given the sensitive security and political situation of the operation, IFRC's operations management support roles are in the form of an operation manager who oversees technical aspects while the IFRC Country Representative manages the organizational development, security, humanitarian value, peace on non-violence, humanitarian diplomacy, and strategic orientation working together with ICRC and respective authorities.

The ICRC (lead role for the Movement in the Diffa region) focuses its emergency response in the eastern part of the Diffa region where most of the conflict affected population is gathering. The ICRC, with the effective support of National Society volunteers, provided emergency food rations to more than 100,000 vulnerable people displaced, returnees or refugees. The food rations were completed by EHI kits for the most vulnerable cases, approximately a quarter of this population. The ICRC also worked on securing proper access to drinking water in the same areas by drilling 15 boreholes. The IFRC in support of the National Society plans to provide hygiene promotion campaigns to the communities using these boreholes. In a coordinated Red Cross Movement effort, the CRL was mobilized to distribute and build emergency shelters for the same population. The ICRC also deployed important additional means to support the health authorities. The ICRC supports the Primary Health Care centre of Bosso town with supplies of medicines and medical equipment. Moreover, from February 2015 onwards, an ICRC medical team has been supporting the surgical team of Diffa Regional Hospital. The ICRC concentrates its assistance in providing surgery to the war wounded patients and other patients in needs of surgery. The ICRC is also involved in its institutional protection activities with visits to people arrested in relation to the current situation. The ICRC with the help of the NS network and trained volunteers provides restoring family links (RFL) services to the population in need. Finally, the ICRC implemented several IHL dissemination session towards various key actors such as security forces, civil authorities, traditional and religious leaders. Some of these sessions were completed by First Aid training provided by National Societies specially trained volunteers."

The Government of Niger, working through its Diffa regional crisis committee chaired by the Governor and coordinated by OCHA and UNHCR, monitors the situation and organizes weekly meetings in which the Niger Red Cross regional branch and ICRC participate, alongside UN agencies (UNHCR, WFP, UNFPA, UNICEF, IOM) as well as national and international NGOs.

The authorities and humanitarian agencies continue to assist displaced persons. The Government of Niger launched an official appeal to assist the displaced and host families in Diffa. The Government is also distributing cereals at low prices to support the vulnerable families within the lean period. International NGOs (ACTED, Care International, IRC, MSF, Samaritan's Purse, Save the Children) and United Nations agencies (FAO, IOM, OCHA, UNHCR, UNFPA, UNICEF, WFP and WHO) are continuing to provide possible assistance.

### **Beneficiary selection**


The initial assistance focused on persons in the Lake Chad islands, particularly affected by problems related to health and water, sanitation and hygiene as well as food and nutrition needs. As it is no longer possible to access the islands and all the people have been evacuated from there, the new group of beneficiaries are the displaced and host population located in Toumour and Yebi zones (see details in the operational strategy and plan). The population from the Lake Chad islands are effectively included among the targeted beneficiaries. The National Society will ensure that the operation is aligned with the IFRC's commitment to ensure gender equality and diversity by adapting a beneficiary selection criteria that targets the most vulnerable including households with pregnant and lactating women, house-households with young children (e.g. under 5), women headed households, and


households with dependent persons (e.g. people with disabilities, sick, elderly, poor health, etc.). Many women and young women are considered to be vulnerable, thus other aspects of programming to be considered will include prevention of sexual violence and gender-based violence, and the protection of children. This revised plan of action targets 50,000 people to be assisted in different domains and targeted areas as detailed in the table below:




### Target beneficiaries in each sector

Sector	N° of beneficiaries	Zone or area	Selection criterion
Health, Water and Hygiene promotion (tarpaulins and mosquito nets included)	15,000	Islands, Baroua Gagamari, Yebi, Toumour	Vulnerable patients without access to the health care (before and currently), host population, IDPs and refugees, Same beneficiaries without shelter, water material storage, mosquito nets
Food distribution (monthly)	25,000	Diffa	Displaced and host households (from WFP)
Gardening	3,500	Yebi & Toumour	5 women cooperatives
Support youth income	1,500	Diffa	Youth ex-drivers of motorcycles
Social cohesion	5,000	Diffa commune	Displaced and host communities in Diffa town
<b>Total</b>	<b>50,000</b>	<b>Islands, Baroua, Yebi, Toumour, Gagamari and Diffa commune</b>	


## Proposed sectors of intervention


 <b>Health and care</b>
<b>Outcome 1: The immediate risks to the health of affected populations are reduced</b>
<b>Output 1.1: Community-based disease prevention and health promotion is provided to the target population</b>
Activities planned: <ul style="list-style-type: none"> <li>• Train 150 community based volunteers in CBHFA and communication on STD (120 already trained)</li> <li>• Provide volunteers with first aid kits and information, education and communication material and means</li> <li>• Procure two boats (canoes) for monitoring health mobile care activities in Lake Chad islands (incentive for the captain)</li> <li>• Procure 20 life vests and safety equipment for boats and train volunteers on their use</li> <li>• Establish agreement with WHO and provide the health centres with medication received from WHO</li> <li>• Distribute 2,000 mosquito nets to the most vulnerable</li> <li>• Monitoring and supervision</li> </ul>
<b>Output 1.2: HIV / AIDS prevention and essential management provided</b>
Activities planned: <ul style="list-style-type: none"> <li>• Organise monthly information, education and communication, home visit alongside to targeted risk groups</li> <li>• Provide supplementary feeding for PLHIV and support the people living with AIDS</li> <li>• Training IHC staff and volunteers in CBHFA and STD-HIV/AIDS prevention and care</li> </ul>

 <b>Water, sanitation, and hygiene promotion</b>
<b>Outcome 2: Immediate reduction in risk of waterborne and water related diseases in targeted communities</b>
<b>Output 2.1: Daily access to safe water which meets Sphere and WHO standards in terms of quantity and quality is provided to 11,000 people</b>

<p>Activities planned:</p> <ul style="list-style-type: none"> <li>• Conduct refresher training for 150 volunteers on use of water purification tablets (120 already trained)</li> <li>• Provide access to safe water through refection of 10 existing water points</li> <li>• Construct/refection of 5 public latrines in IHC and communities</li> <li>• Organise distribution of aqua tabs, and water purification in the communities using water testing equipment</li> <li>• Supervision and monitoring</li> </ul>
<b>Output 2.2: Adequate sanitation which meets Sphere standards in terms of quantity and quality is provided to 11,000 people</b>
<p>Activities planned:</p> <ul style="list-style-type: none"> <li>• Construct/rehabilitation of 5 public latrines in IHC and communities</li> <li>• Provide sanitation tools and protection material and organize monthly community sanitation activities</li> </ul>
<b>Output 2.3: Hygiene promotion activities which meet Sphere standards in terms of the identification and use of hygiene items provided to target population</b>
<p>Activities planned:</p> <ul style="list-style-type: none"> <li>• Train volunteers on PHAST, cholera prevention and hygiene promotion messaging</li> <li>• Conduct hygiene promotion sessions to the target population</li> <li>• Put in place WATSAN and PHAST 10 community clubs</li> <li>• Provide 2,000 target households with water storage materials (buckets, cups and bowls)</li> </ul>
<div style="display: flex; justify-content: space-around; align-items: center;"> <div style="text-align: center;">  <p><b>Food security</b></p> </div> <div style="text-align: center;">  <p><b>Nutrition</b></p> </div> <div style="text-align: center;">  <p><b>Livelihoods</b></p> </div> </div>
<b>Outcome 3: Immediate food needs of the disaster affected population are met</b>
<b>Output 3.1: Appropriate food rations are distributed to 25,000 vulnerable households</b>
<p>Activities planned:</p> <ul style="list-style-type: none"> <li>• Sign agreement with WFP to distribute food parcels</li> <li>• Update on a monthly basis the beneficiary list received from WFP</li> <li>• Train 60 volunteers on distribution techniques</li> <li>• Distribute monthly food parcels to 25,000 persons in targeted communities</li> <li>• Monitoring of distributions</li> </ul>
<b>Output 3.2: Household income is maintained where income sources are disrupted (target 6,000 people)</b>
<p>Activities planned:</p> <ul style="list-style-type: none"> <li>• Organise cash for work for dune fixation on 50ha (planting grass, providing herbaceous seeds)</li> <li>• Purchase and distribute the plant for ground recovery</li> <li>• Organise professional training for youth</li> <li>• Support income generating activities</li> </ul>
<b>Outcome 4: Critical nutritional status of the targeted community is improved</b>
<b>Output 4.1: Information regarding better infant and young child feeding practices is made available and applied by to mothers of children under 5 and/or of malnourished children</b>
<p>Activities planned:</p> <ul style="list-style-type: none"> <li>• Organise community radio broadcast and media coverage on better nutrition for children</li> <li>• Produce communication/visibility materials</li> </ul>
<b>Output 4.2: Integrated health centres in the targeted areas have the capacity to receive and care of all referred malnourished cases</b>
<p>Activities planned:</p> <ul style="list-style-type: none"> <li>• Organize training on IHC staff on care and referral methodologies</li> <li>• Support the IHC in small rehabilitation, maternity,</li> </ul>
<b>Outcome 5: Reduced food insecurity among 2,500 affected households</b>
<b>Output 5.1: Productive assets are replaced and retained</b>
<p>Activities planned:</p> <ul style="list-style-type: none"> <li>• Train community beneficiaries in cereal bank management</li> <li>• Rehabilitate 2 pastoral wells for livestock</li> <li>• Monitor, coach and accompany women throughout the vegetable growing process until harvest</li> </ul>
<b>Output 5.2: Productive assets/inputs for primary production provided in accordance with the</b>

<b>seasonal calendar</b>
Activities planned: <ul style="list-style-type: none"> <li>• Provide fertiliser for the gardening and improved seeds multiplication</li> <li>• Distribute the seeds and monitor the community activities</li> </ul>
<b>Output 5.3: Natural resource management is supported for sustainable recovery</b>
Activities planned: <ul style="list-style-type: none"> <li>• Create or rehabilitate 5 vegetable associations (fence, wells)</li> <li>• Support the associations with the seeds and materials</li> <li>• Train the associations on appropriate gardening techniques</li> <li>• Supervision and monitoring</li> </ul>
<b>Output 5.4: Improve Red Cross safer access and community cohesion amongst refugee and host families</b>
Activities planned: <ul style="list-style-type: none"> <li>• Organization of socio-cultural activities gathering women, children and youth</li> <li>• Support women association</li> <li>• Provide recreation materials and equipment for the IEC centres</li> </ul>

 <b>Shelter and settlements (including basic household items)</b>
<b>Outcome 1: Displaced population who live under huts receive material to cover their roofs for the rainy season</b>
<b>Output 1.1: 2,000 households in Yebi and Toumour received tarpaulins to cover their huts</b>
Activities planned: <ul style="list-style-type: none"> <li>• Procure 2,000 tarpaulins and accessories (ropes, sticks)</li> <li>• Select the beneficiaries</li> <li>• Distribute the tarpaulins and support and assist the elderly and the sick to install their huts</li> <li>• Produce stickers, flags and posters to be used during activities and construction</li> </ul>

 <b>National Society capacity building</b>
<b>Outcome 6: The quality of the operation is supported through protecting and promoting the National Society's development, capacities and future sustainability</b>
<b>Output 6.1: Diffa regional branch and four local committee offices are rehabilitated and have effective communications systems</b>
Activities planned: <ul style="list-style-type: none"> <li>• Small rehabilitation of the Diffa and N'gugmi branches and the headquarters</li> <li>• Install internet in two local branches (Bosso and Maine Sorae)</li> <li>• Support the salary of two key manager of the National Society in finance and volunteer coordination</li> <li>• Recruit an National Society operations field officer to be based in Diffa</li> <li>• Organize and lead monthly Red Cross and Red Crescent Coordination meetings</li> </ul>
<b>Output 6.2: Temporary capacity to be added to the National Society through international partners' support is defined</b>
Activities planned: <ul style="list-style-type: none"> <li>• Train four local branch senior staff in PMER</li> <li>• Monitor, evaluate and report on operational activities</li> </ul>
<b>Output 6.3: The transport capacity of Diffa regional branch is improved</b>
Activities planned: <ul style="list-style-type: none"> <li>• Lease two vehicles for monitoring the activities in Diffa</li> <li>• Support the branches with fuel and maintenance</li> </ul>

## Contact Information

**For further information specifically related to this operation please contact:**

- **Niger Red Cross Society:** Ali Bandiaré, President; Tel: +227 96 97 35 29; email: [crniger@intnet.net](mailto:crniger@intnet.net)
- **IFRC Country Representation:** Pierre Kana, Country representative Tel: +227 20 738 334; email: [pierre.kana@ifrc.org](mailto:pierre.kana@ifrc.org)
- **IFRC Regional Representation:** Momodou Lamin Fye, Regional Representative for Sahel; phone: +221 33 869 36 41 or +221 77 332 56 72; email: [momodoulamin.fye@ifrc.org](mailto:momodoulamin.fye@ifrc.org)
- **IFRC Zone:** Daniel Bolaños Gonzalez, Disaster Management Coordinator, Phone:+254 20 2835213; email: [daniel.bolanos@ifrc.org](mailto:daniel.bolanos@ifrc.org)
- **IFRC Geneva:** Christine South, Operations Quality Assurance Senior Officer; phone: +41.22.730.45 29; email: [christine.south@ifrc.org](mailto:christine.south@ifrc.org)
- **Regional Logistics Unit:** Rishi Ramrakha; Phone +254 20 283 5142, email: [rishi.ramrakha@ifrc.org](mailto:rishi.ramrakha@ifrc.org)

### **For Resource Mobilization and Pledges:**

- **In IFRC Africa Zone:** Penny Elghady, Resource Mobilization Coordinator; Addis Ababa; phone: +251 93 00 36 073; email: [penny.Elghady@ifrc.org](mailto:penny.Elghady@ifrc.org)

### **For Performance and Accountability (planning, monitoring, evaluation and reporting):**

- **In IFRC Zone:** Robert Ondrusek, PMER Coordinator; Phone: +254 731 067277; email: [robert.ondrusek@ifrc.org](mailto:robert.ondrusek@ifrc.org)

## How we work

All IFRC assistance seeks to adhere to the **Code of Conduct** for the International Red Cross and Red Crescent Movement and Non-Governmental Organizations (NGOs) in Disaster Relief and the **Humanitarian Charter and Minimum Standards in Humanitarian Response (Sphere)** in delivering assistance to the most vulnerable. The IFRC's vision is to inspire, **encourage, facilitate and promote at all times all forms of humanitarian activities** by National Societies, with a view to **preventing and alleviating human suffering**, and thereby contributing to the maintenance and promotion of human dignity and peace in the world.

The IFRC's work is guided by Strategy 2020 which puts forward three strategic aims:



**Save lives,**  
protect livelihoods,  
and strengthen recovery  
from disaster and crises.



Enable **healthy**  
and **safe** living.



Promote social inclusion  
and a culture of  
**non-violence** and **peace**.

# EMERGENCY APPEAL OPERATION

06/07/2015

NIGER: Population Movement revised budget (n° MDRNE013)

Budget Group	Multilateral Response	Inter-Agency Shelter Coord.	Bilateral Response	Budget CHF
Shelter - Relief	0			0
Shelter - Transitional	26,509			26,509
Construction - Housing	0			0
Construction - Facilities	44,000			44,000
Construction - Materials	0			0
Clothing & Textiles	20,755			20,755
Food	4,000			4,000
Seeds & Plants	30,557			30,557
Water, Sanitation & Hygiene	49,900			49,900
Medical & First Aid	2,830			2,830
Teaching Materials	43,321			43,321
Utensils & Tools	61,874			61,874
Other Supplies & Services	10,000			10,000
Emergency Response Units	0			0
Cash Disbursements	58,020			58,020
<b>Total RELIEF ITEMS, CONSTRUCTION AND SUPPLIES</b>	<b>351,765</b>	<b>0</b>	<b>0</b>	<b>351,765</b>
Land & Buildings	0			0
Vehicles Purchase	11,921			11,921
Computer & Telecom Equipment	1,509			1,509
Office/Household Furniture & Equipment	5,000			5,000
Medical Equipment	0			0
Other Machinery & Equipment	0			0
<b>Total LAND, VEHICLES AND EQUIPMENT</b>	<b>18,430</b>	<b>0</b>	<b>0</b>	<b>18,430</b>
Storage, Warehousing	2,642			2,642
Distribution & Monitoring	3,000			3,000
Transport & Vehicle Costs	51,000			51,000
Logistics Services	0			0
<b>Total LOGISTICS, TRANSPORT AND STORAGE</b>	<b>56,642</b>	<b>0</b>	<b>0</b>	<b>56,642</b>
International Staff	124,000			124,000
National Staff	25,789			25,789
National Society Staff	49,836			49,836
Volunteers	39,392			39,392
<b>Total PERSONNEL</b>	<b>239,017</b>	<b>0</b>	<b>0</b>	<b>239,017</b>
Consultants	600			600
Professional Fees	12,510			12,510
<b>Total CONSULTANTS &amp; PROFESSIONAL FEES</b>	<b>13,110</b>	<b>0</b>	<b>0</b>	<b>13,110</b>
Workshops & Training	6,733			6,733
<b>Total WORKSHOP &amp; TRAINING</b>	<b>6,733</b>	<b>0</b>	<b>0</b>	<b>6,733</b>
Travel	9,851			9,851
Information & Public Relations	11,041			11,041
Office Costs	21,122			21,122
Communications	18,928			18,928
Financial Charges	6,155			6,155
Other General Expenses	4,500			4,500
Shared Support Services	42,504			42,504
<b>Total GENERAL EXPENDITURES</b>	<b>114,101</b>	<b>0</b>	<b>0</b>	<b>114,101</b>
Programme and Supplementary Services Recovery	51,987	0	0	51,987
<b>Total INDIRECT COSTS</b>	<b>51,987</b>	<b>0</b>	<b>0</b>	<b>51,987</b>
<b>TOTAL BUDGET</b>	<b>851,786</b>	<b>0</b>	<b>0</b>	<b>851,786</b>
<b>Available Resources</b>				
Multilateral Contributions	372,742			372,742
Bilateral Contributions				0
<b>TOTAL AVAILABLE RESOURCES</b>	<b>372,742</b>	<b>0</b>	<b>0</b>	<b>372,742</b>
<b>NET EMERGENCY APPEAL NEEDS</b>	<b>479,044</b>	<b>0</b>	<b>0</b>	<b>479,044</b>