


www.ifrc.org
Saving lives,
changing minds.

Emergency Plan of Action

Peru: Cold Front



International Federation
of Red Cross and Red Crescent Societies

DREF Operation MDRPE010	Glide No. CW-2015-000104-PER
Date of issue: 7 August 2015	Date of disaster: 19 July 2015
Operation manager: Pabel Angeles – Regional Disaster Management Coordinator for South America	Point of contact: Jorge Menendez Martinez - Executive Director of the Peruvian Red Cross (PRC)
Operation start date: 19 July 2015	Expected timeframe: 3 months
Overall operation budget: 220,846 Swiss francs	
Number of people affected: 200,620 persons affected	Number of people to be assisted: 620 families (3,100 people)
Host National Society (no. volunteers, staff, branches): 1 Headquarters, 38 branches, 2,000 volunteers	
Red Cross Red Crescent Movement partners actively involved in the operation: International Federation of Red Cross and Red Crescent Societies (IFRC) Office in Peru – Pan American Disaster Response Unit (PADRU). National Societies present in the country are the American Red Cross, German Red Cross and the Spanish Red Cross; all of which have offered their support if required	
Other partner organizations actively involved in the operation: Governmental Organisations: INDECI (National Civil Defence Institute), Regional Government of Puno, Ministry of Health, Ministry of Agriculture, Ministry of Education, Ministry of Housing, Ministry of Transportation and Communications, Puno Regional Government, Municipality of San Antonio de Putina.	

<Click [here](#) for the DREF budget. [Here](#) for the map of the affected area. [Here](#) for the contact information>

A. Situation analysis

Description of the disaster

Since May 2015 to date, a meteorological phenomenon causing low temperatures, heavy snowfall and frost has affected the Andean regions located above 3,500 metres above sea level; temperatures have dropped below 0°C, and there have been snowstorms and hail. In some places, temperatures reached -15° C, severely affecting the lives and health of the population, as well as basic services, livelihoods (livestock and agriculture) and the infrastructure of various structures, including schools.

An initial declaration of a 45-day state of emergency on 19 July 2015, for the districts and provinces in the departments of Apurímac, Ayacucho, Arequipa, Cusco, Huancavelica, Lima, Moquegua, Pasco, Puno and Tacna was made in response to the cold wave sweeping through Peru. On 5 August, the government escalated its original declaration of a



Dead alpacas from the cold in San Antonio de Putina, Puno, July 2015. Source: PRC

state of emergency nationwide. On 6 August 2015, weather forecasts predicted that the night-time low temperature on 9 August will be -18 Celsius in areas located 4,400 metres above sea level.

Approximately 165,710 people are affected and 100 are homeless due to this cold front in the departments of Apurímac, Ayacucho, Cusco, Huancavelica, Junín, Pasco, Puno and Tacna. In addition, 529 homes are damaged, 11 have collapsed and 11 have been rendered uninhabitable. Frost has affected the health of the population including livestock. According to the National Civil Defence Institute, 65,834 animals are reported dead and 938,813 animals have been affected. In terms of agriculture, 1,162 hectares of crops have been lost, and 1,894 hectares have suffered damages.

The National Meteorology and Hydrology Service of Peru (SENAMHI is its acronym Spanish) reports that temperatures will continue to drop in August, especially in the central and southern highlands. Possible frost has been forecast for southern regions while regions north of jungle areas are expecting lower than normal temperatures. SENAMHI is also forecasting that this situation will continue before the end of the cold season, which normally lasts until August or September.

In view of this event, SENAMHI believes that levels of vulnerability will increase due to the dropping temperatures in the high Andean and highland regions.

TABLE OF DAMAGES FROM FROST AND LOW TEMPERATURES

05 DE AGOSTO DE 2015 A LAS 15:00 HORAS

UBICACIÓN	VIDA Y SALUD (PERSONAS)			VIVIENDAS Y LOCALES PÚBLICOS			TRANSPORTES		
	DAMNIFICADAS	AFECTADAS	FALLECIDAS	VIVIENDAS COLAPSADAS	VIVIENDAS INHABITABLES	VIVIENDAS AFECTADAS	CAMINOS RURALES AFECTADOS (Km)	CARRETERAS AFECTADAS (Km)	TELEFONIA MOVIL AFECTADA (%)
DPTO. APURÍMAC	20	107,208			4				100
DPTO. AYACUCHO		11,453						15	
DPTO. CUSCO		1,259							
DPTO. HUANCAVELICA	56	615		11		70	0.07		
DPTO. JUNÍN		319							
DPTO. PASCO		2,782							
DPTO. PUNO		75,766	6					211	
DPTO. TACNA	24	1,218			7	183			
TOTAL GENERAL	100	200620	6	11	11	253	0.07	226.4	100

5 August 2015

UBICACIÓN	SERVICIOS BASICOS	AGRICULTURA				
	ENERGÍA ELECTRICA AFECTADOS (%)	ANIMALES PERDIDOS	ANIMALES AFECTADOS	AREA DE CULTIVO AFECTADO (Has)	AREA DE CULTIVO PERDIDO (Has)	COBERTURA NATURAL AFECTADO (Has)
DPTO. APURÍMAC	100	48,518	476,027	38	2	39893
DPTO. AYACUCHO		148,731				
DPTO. CUSCO				30		
DPTO. HUANCAVELICA						
DPTO. JUNÍN						
DPTO. PASCO		18,021				
DPTO. PUNO		694,953				
DPTO. TACNA		2,083	32,307	36	1	58
TOTAL GENERAL	100	912306	508334	104	3	39951

Department of Puno

Snow started falling on 3 July, which has continued to increase the impact on several provinces in the Puno region, the provinces of San Antonio de Putina, Azángaro, Carabaya, El Collao, Lampa, Puno, Chucuito, Huancané, Melgar, Moho, San Román, Yunguyo and Sandía. On 4 July, an avalanche occurred in Mar de Oro in the province of San Antonio de Putina, which left six people dead.

According to the latest Civil Defence report from Puno on 31 July, 75,766 people have been affected by the frost, 6 are reported dead, 211 km of highway are damaged and 694,953 animals have perished. In Puno, the towns most affected by the low temperatures are San Antonio de Putina, Azángaro and Melgar, and San Antonio de Putina; Lampa and Melgar are the towns that have lost the most animals.

TABLE OF DAMAGES IN THE DEPARTMENT OF PUNO

31 JULY, 15:00 HOURS - INDECI

LOCATION	Health		Transportation and Communication	Livestock
	AFFECTED PEOPLE	DEATHS (*)	AFFECTED STRETCHES OF HIGHWAY(km)	ANIMALS LOST (**)
DPT. PUNO	75,766	6	211	694,953
PROV. SAN ANTONIO DE PUTINA	11,019	6	133	132,860
PROV. SANDIA	5,296		78	2,340
PROV. EL COLLAO	7,320			68,291
PROV. CARABAYA	4,103			26,914
PROV. AZANGARO	13,801			54,825
PROV. LAMPA	9,798			176,241
PROV. HUANCANE	2,780			
PROV. MELGAR	12,024			233,482
PROV. PUNO	5,915			

(*) People killed by the avalanche in Mar de Oro

(**) Animals lost are alpacas and sheep

According to a Puno Agricultural Directorate report, weather conditions from 3 to 5 July affected livelihoods in Puno, especially due to animals dying from hypothermia, starvation, the effects of diarrhoea, pneumonia, miscarriages, altitude sickness and the effects of constipation.

According to San Antonio de Putina's Agricultural agency, the most affected animal has been the alpaca. There are 141,920 of these animals in the region, of which 68.31 per cent have received health care and 11.22 per cent have died from hypothermia, starvation, the effects of diarrhoea, pneumonia, miscarriages, altitude sickness and the effects of constipation, especially the young animals; the animal deaths have affected the farmers' production.

A.2 Summary of current response

The Peruvian Red Cross branch in San Antonio de Putina has responded through coordination with the Provincial regional emergency operation centre (COER in Spanish) to identify families affected by frosts in district provinces.

The Peruvian Red Cross mobilized humanitarian aid for 450 families, consisting of food kits, shelter, tarpaulins, blankets, cleaning kits and polar blankets, and beneficiaries were identified by volunteers from the San Antonio de Putina branch in Puno. The process to distribute the humanitarian aid was coordinated with the San Antonio de Putina municipal government, which helped transport supplies to the affected area.

On 20 July, a member of the PRC National Intervention Team (NIT) was deployed to perform a damage assessment and distribute humanitarian aid supplies to the affected areas. This included the presence of the National Society president.

Right: On 20 July, the Peruvian Red Cross delivered relief items to the people affected in San Antonio de Putina.
Source: Peruvian Red Cross



The Peruvian Red Cross, through its national president and volunteers from the San Antonio de Putina branch, participated in the distribution process in the highland communities, as well as in coordination meetings with local district and province authorities from San Antonio de Putina. Likewise, coordination was maintained with various Humanitarian Network organizations at the national level.

Table of humanitarian aid distribution by the Peruvian Red Cross on 28 July 2015

Location	Community of Trapiche	Community of Koriwara	Community of Izcaycruz	Community of Chijus	Community of Cantuma	Community of Mijani	Community of Potoni	Total supplies delivered to 28 July
Description	21-Jul-15	21-Jul-15	21-Jul-15	22-Jul-15	25-Jul-15	26-Jul-15	26-Jul-15	
Food Kit	127	48	31	44	46	54	100	450
Shelter Kit	127	48	31	44	46	54	100	450
Tarps	127	48	31	44	0	0	200	450
Blankets	127	48	62	44	92	108	200	681
Cleaning Kit	0	0	0	0	0	0	100	100
Polar blankets	127	48	31	88	46	140	100	580

Total number of families served to 28 July 2015: 450 families in Puno

By implementing emergency micro-projects, the Peruvian Red Cross has been able to deploy provincial response teams to reduce the effects of the low temperatures and frost. These emergency micro-projects are tools used by national headquarters as a first response according to both the magnitude of the event and corresponding assessment by each provincial branch.

However, as a result of escalating needs, the National Society has decided to launch a DREF operation to provide additional assistance to up to 620 vulnerable families in the province of San Antonio de Putina on the Puno Region. This operation may be revised in the coming weeks, based on the evolution of the disaster and further emerging needs, if any.

Overview of Red Cross Red Crescent Movement in country

The regional IFRC office is in Lima, through which actions are coordinated with the disaster management delegate for South America. The offices of the Spanish Red Cross and the German Red Cross in Lima have been informed about the situation, and they are coordinating with the National Society.

The International Committee of the Red Cross (ICRC) has raised the possibility of providing support to restore family links if required, but according to assessments, this emergency will not require this type of action.

Building on their experience through the DREF operation in 2013 in response to a similar disaster, a proposal is being prepared with the American Red Cross to distribute cash to 620 affected families, which is expected to supplement this Disaster Relief Emergency Fund (DREF) Operation Plan of Action. Additionally the Peruvian Red Cross is drafting a proposal to present to the German Red Cross to carry out health campaigns in the affected areas.

Movement Coordination

The PRC has coordinated with the regional IFRC representative in Lima, with the disaster manager (DM) for South America, who has monitored the assessment, and with the American Red Cross, Spanish Red Cross, German Red Cross and the ICRC, with which it has coordinated and shared information.

Overview of current institutional response

Through Supreme Decree No. 050-2015 - PCM of 19 July 2015, the leadership of the Council of Ministers declared a state of emergency in some districts and provinces in the departments of Apurímac, Arequipa, Ayacucho, Cusco, Huancavelica, Lima, Moquegua, Pasco, Puno and Tacna due to the frost. Between those regional departments Puno was declared emergency level 4.

The central government has been implementing multi-sector plans to assist the families affected by the frost. The Ministry of Agriculture has distributed veterinary kits to 1,200 producers in the department of Arequipa and 1,295

veterinary kits in Cusco; the Ministry of Women has delivered shelter kits in the department, benefiting 27,888 people. Likewise, Peru Health Insurance (ESSALUD in Spanish) has delivered veterinary kits, medical care and disease prevention. The Ministry of Health has a plan to address the frost, which it has been implementing in the affected areas.

The head of Civil Defence in San Antonio de Putina reported that oats were delivered on 13 and 15 July to the districts of Ananea, Putina, Sina and Quilcapuncu to feed affected animals. Affected sectors are being cleared by heavy machinery.

RESPONSE TO FROST IN THE MUNICIPALITY OF SAN ANTONIO DE PUTINA

19 JULY

LOCATION	SHELTER	OTHERS
	BLANKETS	OATS
	UNITS	UNITS
DPT OF PUNO	1,050	4,200
PROV. SAN ANTONIO DE PUTINA	400	4,200
DIST. DE PUTINA	200	1,100
DIST. DE ANANEA	100	1,600
DIST. DE QUILCAPUNCO	100	1,000
DIST. SINA		500
PROV. SANDIA	100	
DIST. CUYOCUYO	100	
PROV. CHUCUITO	100	
DIST. JULI	100	
PROV. PUNO	450	
TOTAL – UNITS	1,050	4,200
WEIGHT-MT	86.10	

Source: Civil Defence Office in San Antonio de Putina

8 JULY -

CLASIFICATION	DESCRIPTION OF ITEMS	MEASURE	AMOUNT	WEIGHT PER UNIT	TOTAL WEIGHT
OTROS	BOTTLE OF VITAMINS	UNIT	20	0.	20
	BOTTLES OF ANTIBIOTICS	UNIT	20	0.	20
TOTAL					40

Source: Civil Defence Office in San Antonio de Putina

The oats and the distribution of veterinary kits were part of the first response by the municipality of San Antonio de Putina. These actions were requested by the Board of Community Farmers, prioritizing new-born alpacas. Unfortunately, this response failed to cover the entire alpaca population in the province.

Ministry of Health (MOH) actions to address the frosts affecting Puno included a health brigade that provided more than 5,000 consultations during a specialized health campaign in the district of Putina in order to protect the health of the population, especially that of children under 5 years of age and older adults. The intervention had the support of the staff from the Huancane Health Network, the Putina Health Micro-network from the Regional Health Directorate (DIRESA) in Puno, the municipality of San Antonio de Putina and local educational institutions.

A.3 Needs analysis, beneficiary selection, risk assessment and scenario planning

Health

Given the 2,033 families affected (life and health) coupled with the weather forecast, the number of cases of acute respiratory, skin and eye infections and of emotional distress in the province of San Antonio de Putina are expected to rise over the coming months. The most vulnerable are the children and older adults, as most houses are built with shoddy materials and are unfit to keep the occupants sheltered.

According to a report from the Office of Epidemiology at the Ministry of Health regarding 2011 to 2015 trends for pneumonia and deaths in children under 5 years of age, Lima had the highest number of cases of pneumonia in children under 5 years of age, Loreto the second most and Puno had the fifth most (Piura and Arequipa had the third and fourth most, respectively). In terms of deaths, Loreto has the most deaths from pneumonia in this age range (18

deaths compared to 16 in 2014) and Puno has the second most with 17 deaths (compared to 12 deaths in 2014) so far this year, which translates into a 1.2 case-fatality rate for Loreto and a 3.6 case-fatality rate for Puno.

Up until 17 July, the MOH reported shipping half a ton of medicines to the area, and a team of 10 specialized health professionals from Lima, including lung specialists, laboratory technicians and nurses, provided treatment in the area for one week.

The local coordinator of the Vulnerability Reduction and Emergency Care during Disasters programme (PREVAED - Putina) reported emotional distress in the student population, for which he requested emotional support kits from the local Ministry of Education office which has the emergency care kits available. In addition, PREVAED - Putina convened a meeting to request support on capacity building activities for the educational community in order to assist with the provision of emotional support to the affected population.

Priority needs:

- Provide primary health care through health brigades to prevent acute upper respiratory infections (AURIs) and eye and skin diseases.
- Informational activities, community mobilization.
- Psychosocial support (PSS), psychological first aid training for parents and teachers to supplement the Ministry of Education's and Ministry of Health's actions.
- Training in basic first aid aimed at frequent injuries in cold weather and provision of first aid kits to community teams in affected and vulnerable areas.
- Delivery of personal protective equipment (PPE) to farmers, consisting of eyewear with ultraviolet (UV) protection, rubber boots and waterproof ponchos. These items will reduce cases of conjunctivitis, acute and respiratory infections and offer protection from the cold and humidity.

Shelter and Housing

No homes were affected in the Department of Puno; although it is important to note that the cold wave is causing problems for families due to the increased humidity levels and low temperatures from the snow combined with the high altitude of the areas where these communities are located. The heavy snowfalls have also hindered the people's access to their homes.

Province	District	Susceptibility Parameters		
		Minimum temperatures (July)	Frequency of frosts (Days with frost)	Altitude (Metres)
San Antonio de Putina	Putina	-14 to -11°C	25 to 31 days	> 4,800
San Antonio de Putina	Ananea	-14 to -11°C	25 to 31 days	> 4,800
San Antonio de Putina	Pedro Vilca Apaza	-14 to -11°C	25 to 31 days	4,100 – 4,800
San Antonio de Putina	Quilcapuncu	-14 to -11°C	25 to 31 days	4,100 – 4,800
San Antonio de Putina	Sina	-14 to -11°C	25 to 31 days	> 4,800

Priority needs:

- Distribution of blankets
- Distribution de tarpaulins

Tarpaulins are necessary to repair dwellings and blankets to protect people from the cold.

Food security, nutrition and livelihoods

Livestock farmers conduct this activity at altitudes between 3,000 to 5,000 metres above sea level, as these are the areas where most of the natural pastures that alpaca feed on are located. The population's income comes from selling the fibre - obtained from biannual shearing - meat and pelts, and assets are calculated according to number of head. This current climate event has significantly altered the livestock's natural food chain. It has become difficult for them to

access these natural pastures, and since the communities have no bales to feed them, the livestock are dying from the lack of food, vitamins and antibiotics.

Priority needs:

- Distribution of emergency veterinary kits
- Distribution of bales of hay as a contingency for upcoming cold snaps
- Construction of community shelters in high areas to protect vulnerable livestock from precipitation and snowstorms.
- Delivery of tools and supplies to build collective centres.
- Building capacity in livestock production and management in communities.

Target Population:

The target population is 620 families affected by frosts in the communities in the districts of Ananea, Quilcapuncu, Sina and Putina in the province of San Antonio de Putina.

Families are distributed as follows:

• District of Ananea	:	200 families
• District of de Quilcapuncu	:	120 families
• District of de Sina	:	180 families
• District of de Putina	:	120 families

The affected area is very large and the available resources available are not sufficient to cover all of the communities; therefore, the PRC has decided to focus on the province of San Antonio de Putina because branch volunteers there have experience in responding to similar emergencies (2012 to 2013 in the province of Macusani), and this is a province that is not receiving support from other non-governmental organizations (NGOs).

Beneficiary Selection:

The project will focus on the Puno region in the province of San Antonio de Putina, and it seeks to carry out a comprehensive intervention with support from Movement actors assisting the Peruvian Red Cross.

The beneficiary selection criteria are as follows:

- Families significantly affected by the event (structural damage, damage to livelihoods and health of family members) who have not received adequate and timely support.
- Families with children under 5 years of age, older adults, pregnant women, people with disabilities
- Families with risk to life and health
- Families not receiving aid from any other institutions

Since the affected area is very large and the available resources available are not sufficient to cover all of the communities, the PRC has decided to focus on the province of San Antonio de Putina; however, it cannot be ruled out that the situation might worsen in other areas and that the actions will be expanded through additional funding or support from other participating National Societies, such as the German, Spanish and American Red Cross.

Risk Assessment

In total, 95 per cent of the families have chosen to remain in their homes despite the below freezing temperatures. It is necessary to consider that restricted access increases health risks to the population. SENAMHI is forecasting two frost events in August and September; therefore, needs may increase due to worsening conditions from the low temperatures.

Overall Objective

Providing humanitarian assistance to 620 families affected by frosts in the province of San Antonio de Putina in the districts of Putina, Sina, Ananea and Quilcapuncu through health promotion, delivery of humanitarian aid and livelihoods protection.

Proposed Strategy

Communication between the Peruvian Red Cross and various entities is essential for improving the impact of the Red Cross's actions and to ensure the safety of the operation. The objectives of the coordination with the emergency operations centres (regional, provincial and municipal) will be determined by the situation to ensure relevance, needs are met, the identification of communities and the security of the operation.

The following are included within the line of action strategic operations plan for 620 families in the province of San Antonio de Putina on the Puno Region.

Health actions

Addressing and meeting the needs of 380 families (60 per cent of the target population) through informational modules (informative interventions) in each area of intervention, by providing information on disease prevention or healthy practices to prevent diseases resulting from the emergency,

- Community-based health and first aid (CBHFA) workshop for volunteers and community leaders
- Health promotion workshops for the community
- PSS workshops for volunteers
- PSS care in schools.
- Delivery of 620 personal protective equipment sets for livestock farmers

Shelter actions

Distributing supplies and shelter to 620 families identified in districts in the province of San Antonio de Putina.

- 620 families receive tarpaulins (2 per family).
- 620 families receive blankets (3 per family).

Food security, nutrition and livelihoods actions

Supporting basic productivity for 620 local livestock farmers through the delivery of veterinary supplies to care for sick alpaca and protecting calves in districts in the province of San Antonio de Putina.

- Delivery of 620 veterinary kits
- Construction of 8 collective centres for animals at high risk (calves, pregnant animals, others)
- Agricultural workshop for livestock farmers
- Training for volunteers on livestock management for the population benefitting from veterinary kits

Human resources:

An operation coordinator, who would be a full-time NIT member, must be hired for this operation. An administrator/logistician to provide administrative, financial and logistical support locally in the province of San Antonio de Putina also has to be hired. The headquarters team will provide technical support throughout the operation.

A volunteer and a team of volunteers will be appointed to be responsible for health and shelter activities. The National Society NIT members will be deployed for the distribution of humanitarian aid activities.

The operation will not have to cover the costs of IFRC insurance for volunteers participating in activities since the National Society has just paid to insure all of its members. A general Regional Intervention Team (RIT) member with experience in Mega V and Open Data Kit (ODK) will be deployed for a period of two months to support the National Society on this operation.

The human resources required for the operation are as follows:

- 1 Operations coordinator
- 1 Administrator/logistician
- 1 Volunteer responsible for health and PSS activities.
- 1 Volunteer responsible for Shelter/distribution of humanitarian aid

- 1 Volunteer at headquarters responsible for communications and reporting
- 2 Livestock technicians to provide training to livestock farmers. Two technicians will be needed since they will form two work teams with branch volunteers who will visit both communities simultaneously. It is important to highlight that the communities are very far from each other.
- 30 Volunteers
 - 1 General RIT (Livelihoods) specializing in ODK and Mega V for two months.

Logistics and supply chain

With support from the PRC's headquarters, the administrator/logistician will provide administrative, financial and logistical support to the operation. There is a document that describes the National Society's procedures for procurement and the management of funds. There is a warehouse in Lima and a warehouse at the San Antonio de Putina branch. The PRC's national headquarters has pick-up trucks, which will be deployed to the target area to conduct planned activities. Likewise, 2 4-wheel drive vehicles will be deployed to transport personnel and a semi-truck to transport cargo. The tarpaulins will be purchased through the logistics unit.

Information Technology (IT)

Mega V kits (1 computer, 2 barcode readers, 1 printer and 1 mobile AC converter or adapter) were procured through the 2013 cold wave operation. A refresher training will be organized for volunteers in the use of the ODK-based reporting system.

Communications

The Peruvian Red Cross is disseminating information over PRC's headquarters' and the San Antonio de Putina branch's social networks regarding the actions being conducted. It will be necessary to issue press releases, produce a video of the operation, provide visibility, and draw up the report on the distribution phase of the operation. A beneficiary satisfaction survey has been scheduled.

Information regarding the operation will be distributed mainly through two virtual channels: social networks, with more than 9,000 people following Peruvian Red Cross actions, and the YouTube channel, where the audio-visual production will be uploaded. Disseminating actions via these channels will provide visibility and improve the National Society's position both nationally and internationally. The Peruvian Red Cross Facebook page is: <https://es-la.facebook.com/pages/Cruz-Roja-Peruana/113277568740969>.

Press releases will be sent to provincial and national media to publicize activities.

On 21 July, CNN's Spanish-speaking affiliate interviewed the executive director of the National Society in order to inform the public about the emergency.

Security

A security plan will be drawn up assessing the risks in the target areas. There is insurance for volunteers participating in the operation. Protective gear has been considered for volunteers, such as coats, shoes, eye protectors, masks, sunscreen, rain ponchos, etc. In addition, volunteers will receive instruction on how to stay safe and on National Society standards of conduct.

Planning, monitoring, evaluation, & reporting (PMER)

National coordinators of Health, Volunteers, Administration, Finance and Executive leadership at the PRC's headquarters will support and monitor the plan of action. Communication and coordination will be maintained with the IFRC's disaster management coordinator for South America. A lessons learned workshop will be conducted.

Progress reports and a final report will be drawn up and submitted in a timely manner. Visits and interviews will be conducted to beneficiaries, volunteers and any others that are part of the team in order to track progress, fulfilment of targets or adjustments and so forth; satisfaction surveys will be conducted with beneficiaries and others directly involved in the operation.

Administration and Finance

There is an accounting and financial team at the PRC's headquarters that will support the administrator in the field, who in turn will coordinate all of the necessary activities for ensuring the proper use of the resources. The administrator will always coordinate with the operation coordinator before any expenditure or purchase is made during the operation. Resources will be used according to National Society procedures and the guidelines on the use of DREF funds.

DETAILED OPERATIONAL PLAN

Quality programming / Areas common to all sectors

Objectives	Indicators											
Outcome 1: Continuous and detailed assessment will inform the operation's implementation	Number of general and/or specific evaluations conducted											
Output 1.1: Initial needs assessments are carried out in consultation with beneficiaries and authorities	Evaluation reports account for the number of beneficiaries											
Output 1.2: There is comprehensive monitoring and evaluation of the plan of action	No. of monitoring visit reports No. of progress reports											
Activities / Week	1	2	3	4	5	6	7	8	9	10	11	12
Rapid Emergency Assessment	x											
Sectorial assessment	x	x	X									
Monitoring and tracking by the IFRC	x	x	X	X	X	x	x	x	x	X	x	x
Monitoring visits to target communities				X				x			x	
Evaluation visits			x	x								x
RIT mission	x	x	x	x								
Mega V workshop	x	x	x	X								
Beneficiary satisfaction survey										x	x	x
Lessons learned workshop												x
Video of the operation		x					x					x

Health and Care

Needs analysis:

It is important to take into account how the epidemiological reporting system is working in these regions (Loreto - Puno) as well as its coverage. It is difficult for the scarce health staff to reach these regions because they are very isolated, which could make it difficult to provide timely or accurate epidemiological reporting on the cases.

Rain and hail have affected the health of small livestock farmers, who are suffering mainly from acute respiratory, eye and skin infections because they lack the proper personal protective gear to conduct their activities in extreme weather.

Damage to people's lives and health: deaths (mainly children from pneumonia) and affected populations. The most vulnerable to health issues are children under 5 years of age, pregnant women and older adults.

Currently, the affected population requires health and first aid care; consequently, the use of medical brigades to provide timely care or secondary prevention in difficult to access communities must be considered, as well as PREVAED's request for support on the formation of community teams consisting of parents and teachers trained in psychological first aid to address crises among students and provide health promotion training. Therefore, the National Society is planning and negotiating with the German Red Cross to provide health and first aid care in the affected areas.

This plan of action is intended to address and meet needs in terms of information regarding disease prevention or healthy practices through information-sharing modules (informative interventions) in each area of DREF intervention; the dissemination of information will take place during meetings, livelihoods workshops, humanitarian aid distributions, etc.

Personal protective equipment will be procured and distributed to the targeted 620 most affected families. Protective equipment for livestock owners consists of eyewear with UV protection, rubber boots and waterproof ponchos, which will reduce conjunctivitis, acute eye and skin infections and protect them from the cold and damp.

Please see section A.3 Needs analysis, beneficiary selection, risk assessment and scenario planning- Health for additional health information.

Population to be assisted:

At least 380 families (approximately 60 per cent of the total beneficiary population due to the remoteness of communities and homes in the Andean region) in 4 frost-affected districts in the province of San Antonio de Putina in the Puno Region participate in health actions.

Objectives	Indicators											
Outcome 1: The adverse effects of frost on the health of the affected population in San Antonio de Putina are reduced through health activities by the Peruvian Red Cross in coordination with the Ministry of Health	% of people treated and that benefit from the implemented health activities											
Output 1.1: Community health promotion and Psychosocial Support interventions have been conducted.	No. of people participating directly or indirectly in informational modules No. of informational materials distributed No. of people participating in community health workshops. No. of children participating in PSS activities in schools No. of volunteers trained in CBHFA participating in informational modules											
Activities/Week	1	2	3	4	5	6	7	8	9	10	11	12
Coordination meetings/workshops to present and plan actions involving the PRC and the Ministry of Health	x	x	x									
CBHFA training workshop for volunteers and community health promoters		x	x									
Community health promotion workshops		x	x	x	x	x	x	x	x	x		
Design, printing and purchase of materials for the informational module	x	x	x									
PSS training workshop for volunteers and community health promoters.		x	x									
PSS workshops for students in schools		x	x	x	x	x	x	x	x	x		
Quotes and acquisition for farmer protective equipment		x	x									

Shelter and settlements (and household items)

Needs analysis:

Most dwellings are made of clay and adobe and in some exceptional cases from stone, with straw roofs and dirt floors. Although houses have not been affected by the snowfall, their condition makes it necessary to provide certain items to make them more liveable, such as:

- Plastic tarpaulins, to cover exposed areas or roofs (2 per family).
- Blankets, to protect against the cold (3 per family).

Population to be assisted:

620 families in Ananea, Quilcapuncu, Sina and Putina in the province of San Antonio de Putina in the department of Puno

Objectives	Indicators
Outcome 2: The housing needs of 620 targeted families are covered	% of families who improve their living conditions according to emergency housing standards

Output 2.1: 620 families receive non-food items		No. of household receiving blankets and tarpaulins that meet operation standards											
Activities	Week / Month	1	2	3	4	5	6	7	8	9	10	11	12
Procurement of plastic tarpaulins		X	X	X									
Procurement of blankets		X	X	X									
Distribution of items to the affected families		X	X	X									

Food security, nutrition and livelihoods

Needs analysis:

Livestock farmers conduct their activities at altitudes between 3,000 to 5,000 metres above sea level, as these are the areas where most of the natural pastures that alpaca feed on are located. These lands belong to the Andean communities, and livestock farming takes place far from the population centres and economic activities in San Antonio de Putina. These livestock farmers get their income from selling fibre, meat and pelts of the alpaca. Fibre is obtained from the biannual shearing, and assets are calculated according to number of animals owned.

Small livestock owners do not have enough sheds in the affected areas to serve as collective centres to protect vulnerable, pregnant and baby alpaca from the low temperatures. Access to these communities is over hard-packed dirt roads, which have been damaged by the snow and rain. Rehabilitation of the roads has been slow and in some cases the users themselves have been repairing them.

In addition, farmers lack the personal protective equipment to deal with extreme weather conditions, which increases their exposure to health issues during their normal farming activities. This is being addressed under the health and care section of this plan.

Production activities are carried out at the family level, which is the first level that needs to be supported in order to cope with emergency situations. The local and regional public institutions have provided limited assistance in this respect.

From May to date, 68 per cent of a total 141,920 livestock have been affected, and 11 per cent of calves have been lost to date.

In the longer term, Agro Rural in conjunction with the National Agrarian Health Service (SENASA in Spanish) has been building the capacity of small livestock farmers in 5 districts in San Antonio de Putina through livestock promoters that offer normal loans for planting oats and other grains, as well as mortgage loans for livestock buying and breeding activities; the community's capacity in daily activities is built in this manner.

Livestock for the 620 families is the main source of income and food therefore must be protected. Families gain all their income from these valuable assets and therefore they are critical for the families to continue to meet their food and basic needs. Livelihoods protection activities have therefore been designed to protect the livestock assets from perishing and to ensure that the families are not made more vulnerable through damage or loss of this key asset.

Population to be assisted:

A total of 620 families affected by the cold front in 4 districts in the province of San Antonio de Putina in the Puno region.

Objectives	Indicators
Outcome 3: Reduce the impact of frost on 620 families in 4 districts in the province of San Antonio de Putina	% of the population benefitting from livelihoods protection activities
Output 3.1: 620 families in 4 districts in the province of San Antonio de Putina have the supplies and knowledge to protect their livelihoods through the provision of veterinary kits, technical assistance and animal feed.	<ul style="list-style-type: none"> • 1 collaboration agreement with the municipality of San Antonio de Putina. • No. of participants in livestock protection and veterinary kit use workshops. • No. of families provided with veterinary and protection kits, tools and animal feed
Output 3.2.: 8 communities have shelters to protect their animals, food and other things during current and future	<ul style="list-style-type: none"> • Study of viable areas for construction • No. of shelters to protect livelihoods

cold snaps).																
Output 3.3 PRC volunteers and district municipalities have increased their technical expertise in Mega V.	• 2 Mega V workshops for PRC volunteers															
Activities Week / Month	1	2	3	4	5	6	7	8	9	10	11	12				
Developing beneficiary selection criteria	x	x														
Identification and registration of beneficiaries using the ODK - Mega V systems			x	x												
Signing of the agreement with the municipality of San Antonio de Putina.		x	x													
Community workshops on techniques to protect livestock and use of veterinary kits.			x	x	x	x	x	x	x	x	x	x				
Quotes for and acquisition of veterinary kit supplies		x	x													
Procurement of oats for animal feed	x	x	x													
Distribution of veterinary kit supplies and animal feed					x	x	x									
Conducting a study of viable areas for construction		x	x													
Acquisition and distribution of materials and tools to build collective centres for animals			x	x	x											
Construction of collective centres for animals					x	x	x	x								

The main livelihood actions are:

Animal care and protection, access to cash or food for families, access to physical capital and support on the training of people in the development of the first 3 activities. To this end, the Peruvian Red Cross proposes hiring livestock experts who will be responsible for making home visits, training farmers and motivating community involvement in building shelters to protect livestock during this winter and future emergencies.

The need to build animal protection shelters is included in this plan of action since this strategy was implemented successfully in the past and at the moment the need to protect the families' main source of income and livelihoods is urgent. This strategy will be promoted so other entities can replicate in other affected areas.

Veterinary kits to care for sick animals and protect calves will be acquired with technical advice from Agro Rural. Each kit will contain supplies for 100 head of livestock (alpacas), which are described below:

- 1 200-ml bottle of vitamins (AB3E) as a supplement when there is no grass.
- 1 100-ml bottle of antibiotic (antibiotic + anti-inflammatory + oxitetracycline + ketoprofen, for pneumonia and respiratory diseases).
- 1 200-ml bottle of anti-parasitic
- 1 500-ml bottle of iodized alcohol
- 1 500-g pack of cotton
- 100 10-ml syringes
- 1 thermometer
- 18x1 ½ needles

Oats will be purchased to meet livestock feed needs.

In order to build the collective centres for the most vulnerable animals (calves, pregnant alpaca, among others), this activity will strongly emphasise coordination with Agro Rural and the municipality for the necessary support and make use of the local technicians' capabilities, such knowledge of the area, knowledge of the age-old techniques and knowledge of the local languages (Quechua and Aymara). Toolkits will be provided to build the collective centres, which will include a shovel, pick, hammer, saw, crowbar and pliers.

Materials for building temporary animal shelters

Item	Size	Quantity
Eucalyptus log	4" x 2.20 m	18
Eucalyptus log	4" x 3.70 m	6
Eucalyptus log	3" x 8 m	6

Eucalyptus log	3" x 10 m	5
Eucalyptus log	3" x 1.15 m	6
Eucalyptus log	3" x .75 m	6
Eucalyptus log	3" x .40 m	6
Lath	2" x 2" x 10 m	17
Lath	2" x 1" x 8.45 m	15
Zinc sheet	1.80 x .80 x 016	60
Nails for sheets	Single size	9.5 kilos
Nails	6"	6 kilos
Nails	4"	3 kilos
Tarp	4 in height	222 m2
Cement	Kilos	90
Sand	m ³	0.11
Gravel	m ³	0.14

Activities also include agricultural workshops for beneficiaries and livelihoods training for volunteers and local authorities in order to share the actions that will be developed and to increase their knowledge of livelihoods interventions, from the operation's planning phase to its practical implementation.

Contact information

For further information specifically related to this operation please contact:

- **In Peruvian Red Cross:** Jorge Menéndez Martínez, Director Executive; phone + 51 266 0481 ext. 4108; email: director.ejecutivo@cruzroja.org.pe.
- **In IFRC regional office in Panama:** Carlos Inigo Barrena, disaster response and crisis and early recovery coordinator; phone: +507 317 3050; email: ci.barrena@ifrc.org.
- **Regional Logistics Unit (RLU):** Stephany Murrillo, Zone Senior Logistics & Mobilization Officer, Phone: +507 317 3050; email: Stephany.murillo@ifrc.org.
- **In Geneva:** Cristina Estrada, quality assurance senior officer, phone: +41.22.730.4529, email: cristina.estrada@ifrc.org.

For Performance and Accountability (planning, monitoring, evaluation and reporting enquiries):

- **In IFRC regional office in Panama:** Priscila Gonzalez, planning and monitoring senior officer; phone: +507 317 3050; email: priscila.gonzalez@ifrc.org.

For Resource Mobilization and Pledges:

- **In IFRC regional office in Panama:** Ursula Araya, Relationship Management Coordinator. +507 317 3050; email: Ursula.araya@ifrc.org.

Click [here](#) to return to the title page

Click [here](#) for the DREF budget

DREF OPERATION

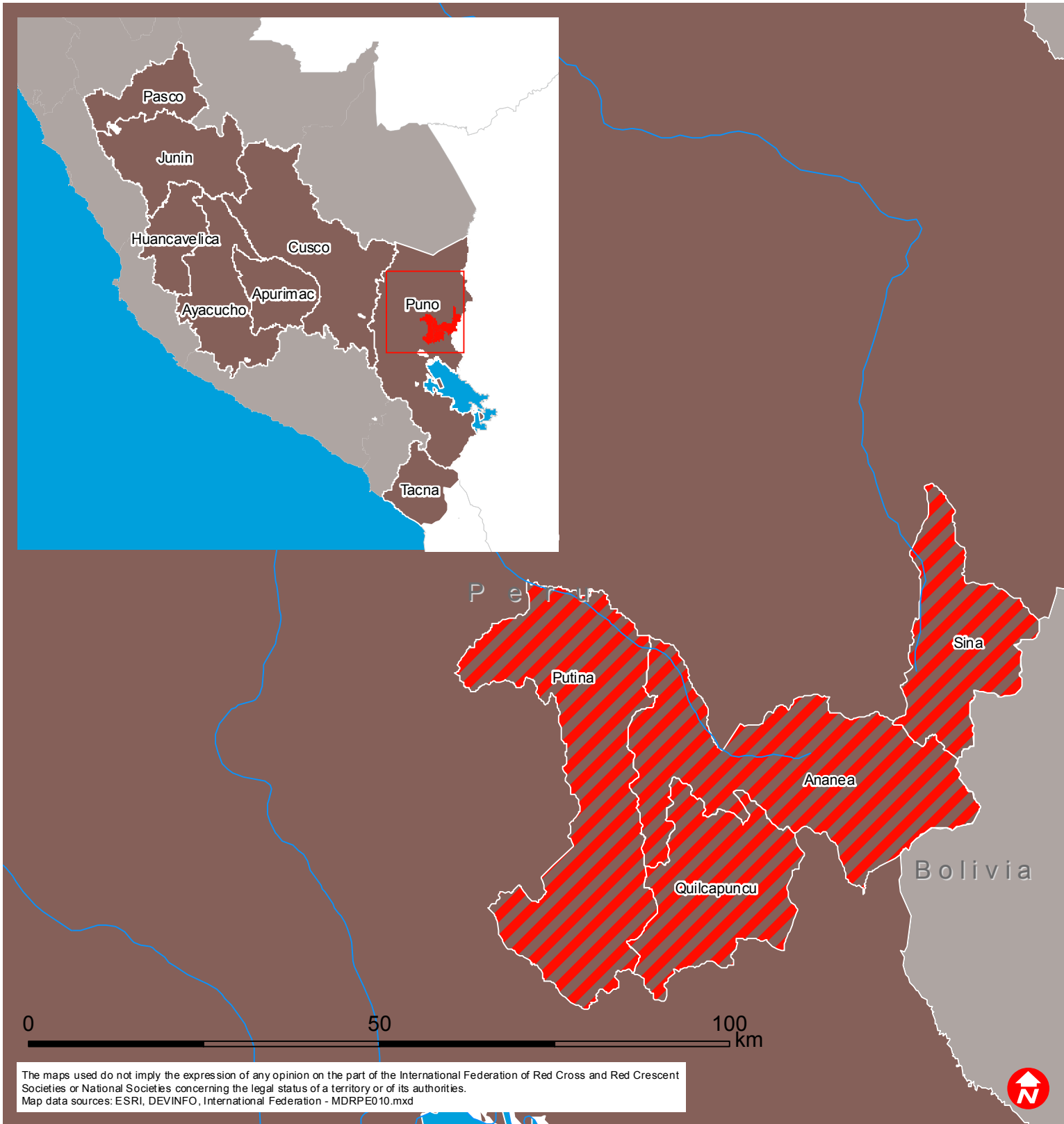
MDRPE010 - Peru Cold Front

07/08/2015

Budget Group	DREF Grant Budget CHF
Shelter - Relief	17,269
Shelter - Transitional	0
Construction - Housing	0
Construction - Facilities	0
Construction - Materials	22,433
Clothing & Textiles	9,639
Food	0
Seeds & Plants	65,945
Water, Sanitation & Hygiene	0
Medical & First Aid	0
Teaching Materials	12,764
Ustensils & Tools	3,868
Other Supplies & Services	14,988
Cash Disbursements	0
Total RELIEF ITEMS, CONSTRUCTION AND SUPPLIES	146,906
Land & Buildings	0
Vehicles	0
Computer & Telecom Equipment	0
Office/Household Furniture & Equipment	0
Medical Equipment	0
Other Machinery & Equipment	0
Total LAND, VEHICLES AND EQUIPMENT	0
Storage, Warehousing	0
Distribution & Monitoring	1,670
Transport & Vehicle Costs	15,278
Logistics Services	5,174
Total LOGISTICS, TRANSPORT AND STORAGE	22,122
International Staff	7,736
National Staff	0
National Society Staff	12,812
Volunteers	2,417
Other Staff Benefits	2,176
Total PERSONNEL	25,141
Consultants	0
Professional Fees	0
Total CONSULTANTS & PROFESSIONAL FEES	0
Workshops & Training	2,417
Total WORKSHOP & TRAINING	2,417
Travel	1,934
Information & Public Relations	5,270
Office Costs	1,305
Communications	1,886
Financial Charges	387
Other General Expenses	0
Shared Office and Services Costs	0
Total GENERAL EXPENDITURES	10,781
Partner National Societies	0
Other Partners (NGOs, UN, other)	0
Total TRANSFER TO PARTNERS	0
Programme and Services Support Recovery	13,479
Total INDIRECT COSTS	13,479
TOTAL BUDGET	220,846



Peru: Cold wave



- Affected departments
- Targetted districts