

Combined Monthly Ebola Operations Update N° 25¹

15 September, 2015

Current epidemiological situation + country-specific information

During week 35 (24 - 30 August 2015), two EVD cases were confirmed in **Guinea** in the prefectures of Conakry (in Ratoma quarter) and Dubréka (Dubréka - centre). Compared to the week 34 (17-23 August 2015), three cases were confirmed in Conakry (in Ratoma quarter). During week 35, three prefectures remained "in red" i.e. with 6 cases in Conakry, 1 in Forécariah and 1 in Dubréka. The confirmed case in Dubréka is linked to a community death. The number of new cases however continues to decrease with an average of two cases reported per week only. Nine cases were reportedly declared positive in the last two weeks of August. About 89 per cent of transmission chains are now from known contacts, which allow a better surveillance and control; however, 16 cases have evaded from surveillance and cannot be traced back for treatment.

Due to the extension of the measure – "SDB to all deaths" by the Guinean government on the 25th of June 2015, the number of SDB conducted by the Guinea Red Cross (GRC) teams which had tremendously increased, reaching an all-time high mark by end of July. 716 in the week ending 5 July, averaging nearly 700 a week for a four-week total of 2,764. In August, this trend slightly slowed down with 3,454 SDBs in total and an average of 690 SDBs per week.



A Sierra Leone Red Cross community events based surveillance (CEBS) volunteer notes down the address of a person displaying symptoms of Ebola to flag up a potential new case so that a swift intervention will follow.
Photo: Victor Lacken/IFRC

IFRC's Ebola virus disease (EVD) strategic framework is organised around five outcomes:

1. The epidemic is stopped;
2. National Societies (NS) have better EVD preparedness and stronger long-term capacities;
3. IFRC operations are well coordinated;
4. Safe and Dignified Burials (SDB) are effectively carried out by all actors
5. Recovery of community life and livelihoods

helping stop the epidemic, the EVD operations employ a five pillar approach comprising: (i) Beneficiary Communication and Social Mobilization; (ii) Contact Tracing and Surveillance; (iii) Psychosocial Support; (ii) Case Management; and (iv) Safe and Dignified Burials (SDB) and Disinfection; and the revision has included addition sector on recovery basically covering food security, livelihoods and disaster risk reduction.

Six emergency appeals were launched to respond to and combat EVD outbreaks in Guinea, Liberia, Sierra Leone, Nigeria and Senegal. Those in Guinea, Liberia and Guinea are still active whilst coordination and technical support continues at the regional level. The Ebola emergency appeals have been revised to anticipate a longer-term vision as operations head toward recovery. The revised appeals can be found at <http://ifrc.org/en/publications-andreports/appeals/> and are currently planned to end in December 2017.

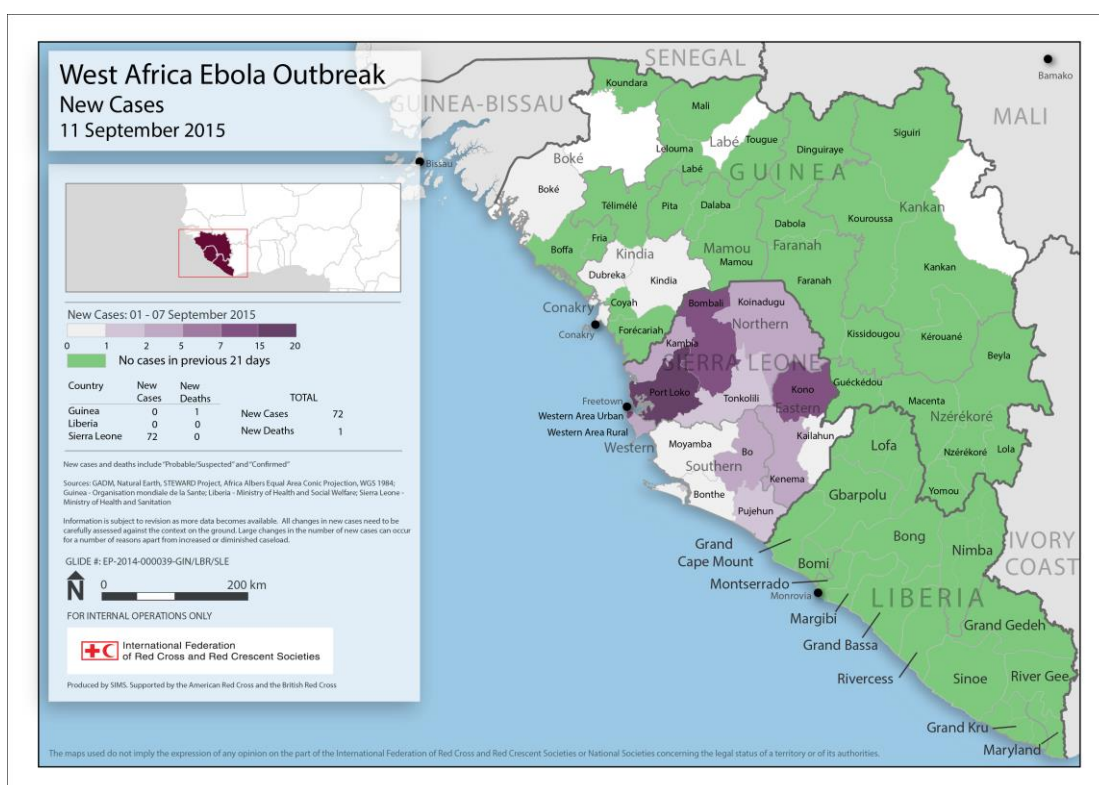
Smaller preparedness and response operations were financed by the IFRC Disaster Response Emergency Fund (DREF) in Mali, Cote d'Ivoire, Cameroon, Togo, Benin, Central African Republic, Chad, Gambia, Kenya, Guinea Bissau and Ethiopia. In total, 16 countries in Africa launched emergency operations relating to this outbreak.

¹ A single combined operations update is produced for the 4 Ebola operations on a monthly basis.

Liberia was again declared EVD free again on the 3rd of September after 42 days since the last positive case was discharged. Current focus is on improving swabbing for all deaths, border surveillance and provision of psychosocial support (PSS) – which remains high priority for Government of Liberia and among key stakeholders in fight against the disease. There is also need to promote safe sexual practices for all survivors until tested negative, and to address issues of pregnant women accessing antenatal care. Current issues affecting survivors include loss of income, PTSD (Post traumatic stress disorder) and forced change of residence.

In **Sierra Leone**, a new confirmed case was reported in the week to 30 August - the first case reported in over two weeks. Kambia, which borders the Guinean prefecture of Forecariah had not reported a confirmed case for 48 days. A rapid-response team was immediately deployed to the area. As at 30th of August a total of 48 contacts had been identified, although this figure is expected to rise in due course. The origin of infection remains under investigation. No health worker infections were reported in the week to 30 August.

The *Ebola ça suffit!* ring vaccination Phase 3 efficacy trial of the VSV-EBOV vaccine has now been extended from Guinea to Sierra Leone. Contacts and contacts of contacts associated with the confirmed case in Kambia will therefore be offered the vaccine. Laboratory indicators continue to reflect a heightened degree of vigilance, with 1,880 new samples tested in the 7 days to 30 August. One new sample tested positive for EVD. Most tests (78% in the week to 30 August) are of post-mortem swabs taken to rule out EVD as the cause of death.



Ebola Emergency Appeals: Summary Update on Resource Mobilization

Appeal	Guinea MDRGN007	Liberia MDRLR001	Sierra Leone MDRSL005	Coordination & Preparedness MDR60002	Total Figures (CHF)
Budget	56.0 million	46.3 million	94.6 million	15.9 million	212.7 million
Income to date	26.6 million	22.0 million	56.2 million	11.4 million	116.2 million
Coverage	47%	48%	59%	72%	54%
Funding gap	29.4 million	24.2 million	38.2 million	4.5 million	96.6 million

Funding priorities: IFRC is urging donors to commit non-earmarked funds with longer timeframes

Operation Updates

Latest available cumulative data are provided below for 11 situation and programme indicators.

	Operational Countries and Appeals			
	GUINEA	LIBERIA	SIERRA LEONE	TOTAL
	(MDRGN007)	(MDRLR001)	(MDRSL005)	
Cumulative Cases	3,793 ²	10,672	13,618	28,083
Cumulative Health Care Worker Deaths	100	192	541	833
Cumulative Deaths	2,528	4,808	3,953	11,289
Fatality rate	67.7%	45%	41%	40%
Safe and Dignified Burials(SDB) conducted by NS	15,602	3,825	22,985	42,412
Trained RC volunteers active in Ebola	903	142	3,033	4,078
Contacts traced by NS	1,084	7,827	97,160	106,071
Houses disinfected by NS	28,204	2,818	17,559	48,581
People reached through face to face social mobilization	1,839,300	2,411,220	3,074,162	7,324,682
People reached through Psychosocial support	8,328	8,195	331,947	348,470
People treated by NS	N/A	N/A	978	978

Guinea

A. Social mobilization and beneficiary communication

Community engagement through social mobilization and beneficiary communications (BenComs) activities continued throughout Guinea during the reporting period. A total of 115,271 people were reached through face-to-face interactions and significantly through social mobilization campaigns in Conakry, radio shows and routine BenComs activities.

Highlight:

- Social mobilization and community engagement sessions held by the volunteers during SDBs reached 48,810 persons.
- Participation in the massive campaign in Conakry reaching 1,925 in 385 families; including 49 EVD known contacts.
- 24 interactive radio shows broadcast on radio Tamata and Espace Kakande. The themes were *‘Ebola is still in Guinea, let’s protect ourselves’* with topics including: mode of transmissions and preventive measures, the importance of surveillance, Ebola and active case finding in the community, the importance of PSS to Ebola affected persons, and hygiene promotion. The programme was broadcast in four languages to ensure different audiences are reached: Soussou, Malinke, Fulani and French.
- 192 phone calls and 9 SMS received during the radio.
- Production of a documentary on the new ABC³ approach for conducting SDBs.

Challenges:

- Inaccessibility of some areas due to bad conditions of roads following heavy rains often leading to delays and postponement of activities. It is also difficulties to access some remote areas especially households in the islands in Conakry and Boke for instance

² This number includes 3,327 confirmed cases

³ Approche de Biosécurité piloté par la Communauté a “Community-led Biosecurity Approach”

Planning:

- Continue with door-to-door sensitization activities and community dialogue on EVD and hygiene promotion; radio shows on Tamata and Espace Kakandé radio stations; and disseminating messages through the Tamata and Espace Kakandé
- Start the mobile Radio "Santeya FM" in Forécariah .
- Distributing 10,000 solar radio sets to community members in Boké and Forécariah (prefecture with intense cross border activities with Sierra Leone and Guinea Bissau.
- Training 150 new community emergency response volunteers in Boké in the framework of the cross border preparedness and response strategy.

B. Psychosocial SupportHighlights:

- Most PSS activities are concentrated in the four active prefectures including Conakry, where a two-weeks confinement and sensitization campaign is on-going following resurgence EVD contact and cases in two areas of the city. PSS activities are designed to support EVD affected families, and Red Cross staff and volunteers involved in the operation.
- Along with other pillars, PSS team has been contributing to the four-week campaign in two quarters of Conakry town, namely Ratoma and Matam, Matoto and khaloum. A team of ten volunteers was initially trained in psychosocial First Aid techniques and deployed to the field in July. In August, 190 more volunteers were trained in stress management techniques. The trained volunteers are involved in SDBs in Conakry and Coyah.
- Ten additional volunteers were trained in psychological First Aid and on distribution techniques for food and non-food items that will take place under the recovery phase. These volunteers will specifically operate in Dubreka where they will be in charge of bringing condolence kits⁴ to 100 EVD affected families while they provide a psychosocial first aid to the families.
- PSS activities in Matam and Ratoma and Matoto reached 1,620 persons among whom are 245 persons that are part of the 49 families with known Ebola contacts in Conakry.
- In Conakry the PSS team visited two families affected by EVD in Dixin. These two families have registered 16 people infected with the EVD with 6 deaths and 10 survivors. Psychological First Aid was provided to the family members and condolences kits are due to be distributed.
- The IFRC PSS delegate had a psychological debriefing session with two volunteers involved in a car crash in Koumbia during the cross border activities with Guinea Bissau. He also had two debriefing sessions with four IFRC staff members - a delegate and three national staff. This is the driver traumatized by the accident Koumbia and two staffs of finance department who have been taken hostage and a kidnapping victim driver. Their psychological state is observed to be now stable.

Challenges:

- There are serious difficulties in deploying PSS volunteers to the field. In fact, there are no PSS supervisors in the field and PSS officers are in very limited number, which makes it difficult to get them introduced to the community and have an adequate supervision.

Planning:

- Distribution of condolence kits to 100 EVD affected families in Dubreka,

⁴ Each condolence kit is made up of 2 bags of rice (50 Kg per bag), 2 jerry cans of cooking oil (5 L per jerry can), 7 Kg of sugar, 1 pack of soaps (contains 35 Pcs). The condolence kit is accompanied with a PSS session

- Official handover and inauguration of a renovated house for an EVD affected family in Conakry (Dixin)
- Stress management sessions to GRC staff members.
- Support radio show focussing on the importance of PSS to EVD victims.

C. Contact Tracing and Surveillance

Highlight:

- Contact tracing and surveillance activities were carried out in four sub-prefectures of Forécariah (Benty, Moussayah, Farmoriah and Sikhourou). Out of the 30 villages bordering Sierra Leone, 28 of them are now covered by surveillance activities and the two remaining will be covered in September. Key achievements for this period include:
 - 13 alerts that were issued following community deaths,
 - 50 patients were successfully oriented towards health facilities;
 - 7 community events monitored and coordination, and
 - technical supervision of community epidemic response teams in 4 sub-prefectures.
- As part of inter-pillar activities between BenComs and Surveillance, 2,245 households were reached through door-to-door sensitization, i.e. a total of 11,441.
- In the efforts to reach key audiences, 25 sessions with religious leaders were held, reaching 2,031 persons.
- 14 meetings with community women leaders were organized and 60 persons were reached to enhance the community dialogue in active prefecture. A dialogue with traditional healers was also initiated where 4 meetings with 13 participants were successfully held.
- 10 schools were visited with an average of 1,862 persons reached with key messages related to surveillance and contact tracing.
- Note that despite the decrease of new EVD cases, the six prefectures remain active and IFRC has maintained its capacities in surveillance. So far, at least 156 volunteers and 12 supervisors are active per week in hotspot areas.

Challenges :

- Difficulties to access some remote localities in Forécariah for the cross border activities. The roads are in extremely poor condition following heavy rains that sometimes prevents volunteers to walk in the community. A similar situation can be observed in Boké, where some villages are in the islands which are difficult to reach due to extreme weather conditions
- Despite the sensitization, hygiene conditions are difficult to improve due to the lack of potable water in Sikhourou, Farmoriah, Moussayah and Benty (in Forécariah).

Planning:

- Training of new community epidemics response teams in the sub-prefecture of Sansalé, Kafarandé and Dabis (in Boké)
- Community meetings in the sub-prefectures bordering Guinea Bissau (in Boké),
- Continue door-to-door activities and community-based surveillance activities as part of cross border activities with Sierra Leone
- Continue sensitization meetings targeting organized communities (religious leaders, community leaders, women groups etc.)

D. Case Management in Red Cross Ebola Treatment Centres – Macenta

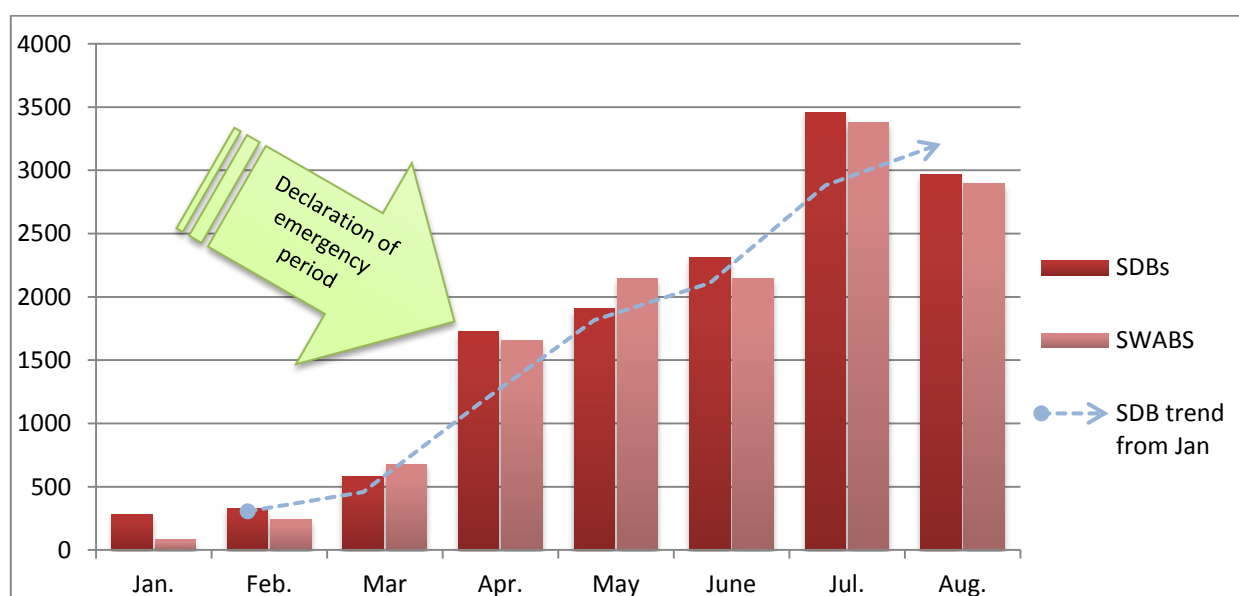
Highlights

- GRC does not do case management in Guinea but provide transport in specific areas. However, the French Red Cross is implementing this pillar under a bilateral agreement with the Guinean government. Since 11 July 2015, The Red Cross is no longer involved in the transportation of patients whereas the MSF is fully in charge of this activity.

E. Safe and Dignified Burials and Disinfections of Houses

Highlight

- SDB teams conducted 2,968 safe burials across Guinea. At the same time, 2,374 houses and other facilities were disinfected and 2,897 swabs were taken in order to determine whether or not the patient or body was EVD positive or negative.
- The number of SDB teams has been maintained (903) since end of June although the number of SDBs has been slightly changing from month-to-month. In August, the average of SDBs per week was 742 versus 684.5 in July.



Since the declaration of the emergency period by the Guinean government, the average of SDBs has increased from 400 and 716 per week with a monthly global average of 1,695.25 since January 2015 (April – August 2015)

Challenges

- Peaceful resistance towards SDB activities still reported - this requires strengthening of communication in areas at high risk
- The absence of an operational base in Conakry remains a serious challenge for SDBs activities in Conakry,⁵ specifically when it comes to the waste management issue.

Planning:

- Organize refresher trainings for SDB teams on standby in green zones (forest, middle and high Guinea), to make sure their capacities to intervene when required remain updated.
- The GRC and IFRC are preparing a workshop to validate SDB standard protocols.
- The GRC and IFRC to set up new SDB teams in remote areas (sub-prefectures) to avoid teams located at the chief town of prefectures running too long distances to do their jobs.

⁵ Out of 5 SDB teams in 5 communes of Conakry, only one base exists

- Construction or renovation of operational bases in Coyah, Boke, Fria, Boffa, Dubreka to improve efficiency of SDB activities.
- Advocate for the promotion of rapid test "OraQuick" and give back to body to the family if the test result is negative. Note that the "rapid test" does not cancel the laboratory test but reduces the impact of SDBs on communities.
- Continue advocating to return to former "Conakry system" of returning bodies to their families if they test negative as systematic burial increases the community resistance and has revealed to be costly both in human, logistical and financial resources.

Liberia

A. Social Mobilization and Beneficiary Communication

Highlights

- There were no social mobilization activities in August 2015. Plans are underway to embed beneficiary communications and related approaches in all programmes.
- CBHFA sensitization workshop was conducted on 7th of August to explain LNRCS concept on one-*approach* CBHFA programme and the concept can be used for all other interventions. The workshop was attended by participants from LNRCS headquarters IFRC, American Red Cross, German Red Cross and Danish Red Cross.
- Following up the sensitization workshop, a five-days training of trainers workshop was conducted in Bomi with 20 participants target chapters, staff from different departments in headquarters and representatives from county health teams.
- Two-days training for volunteers was conducted in Bong County; the volunteers learnt how to collect data on community selection criteria in three target chapters i.e. Lofa, Bong and Nimba. County health teams from these counties also participated. Community selection exercise followed a day after the training.

B. Psychosocial Support

Highlights

- The PSS baseline tool was developed and field tested
- Emergency PSS response standard operating procedure completed along with the LNRCS PSS Strategy and guidelines.
- Montserrado County health team requested Red Cross to provide PSS refresher training on PSS for all partners on a quarterly basis.

Planning

Training of trainers on 'Caring for Volunteers' will be conducted in mid-September; then rolled out to chapter level in October 2015.

C. Safe and Dignified Burials and Disinfection of Houses

Highlights

- There were no SDB related activities in August.

D. Surveillance – Active Case Finding

Highlights

- Surveillance activities continued in five counties bordering Guinea and Sierra Leone (Bong, Gbarpolu, Grand Cape Mount, Lofa and Nimba). Activities are being strengthened in areas

bordering Guinea and Ivory Coast in preparation for population movement during elections in October in the two neighbouring countries.

- CEBS guidelines have been finalized by the Ministry of Health but are yet to be shared with partners.

E. Case Management - Community-Based Household Protection

Highlights

- The *community-based protection* kit programme ended on 30th of June and the final activity report submitted end of July 2015. By the end of the project, the following had been received from UNICEF.
 - 5,376 home based protection kit,
 - 5,000 hygiene kits
 - Nutrition support - 35 box of RUTF biscuit form – Ready to Use Therapeutic Food). RUTF, 100 bottles of appropriate food for children aged 0-6 months (RUIF - Ready to Use Infant Formula) and 35 box age appropriate food (RUTF paste – Ready to Use Therapeutic Food).
 - Cash contribution to LNRCS: USD 145,000
- In the course of the project, the LNRCS trained 29 people including health officers from 15 chapters and five IFRC emergency health delegates. The health officers then trained community volunteers in conjunction with distribution of the kits. A total of 3,080 kits were distributed to 15 LNRC chapters; 835 kits were prepositioned at chiefs' offices in hard to reach communities for easy distribution to families affected according to the set criteria. There were 46 hot spots in which LNRCS had trained community volunteers; Sinoe (1), Gbarpolu (5), Montserrado (1), Grand Bassa (1), River Cess (6) and Grand Cape Mount (32).
- Hygiene promotion activities were conducted for 1,048 households living in EVD affected communities in five counties i.e. Bomi, Grand Cape Mount, Montserrado, Grand Bassa and River Cess County. The affected communities also received hygiene kits containing gloves, bars of soap, chlorine and buckets with taps; and 60 households in Grand Cape Mount were supported to clean their houses. Therapeutic nutritional support was provided to EVD patients as well as children in the affected households benefitting 289 people in Grand Bassa and Montserrado; 68 infants aged 0-6 months in River Cess and Grand Bassa and 100 children aged 6-24 months in River Cess and Grand Cape Mount.
- IFRC initiated an internal review CBP kit programme in all 15 counties. The review team interviewed survivors who benefited from the kit, care givers who used the kits, LNRCS staff, volunteers and County Health Teams involved in the implementation of the programme. Data was collected through key informant interviews with LNRCS, CHT, UNICEF and MOH staff, while focus group discussions and quantitative semi-structured household questionnaires were used for care providers.
- To enhance innovation in real time data collection process, the Rapid Mobile Phone (RAMP) Survey methodology was used to collect and analyse data. The majority of respondents acknowledged that the community protection strategy was good for preparedness and response, specifically at the initial phase of the EVD emergency response before referral for specialized care in ETUs.

Sierra Leone

A. Social Mobilization; Community Engagement and Beneficiary Communications

Achievements

- Radio-in-a-box show carried out in 11 communities in Port Loko, Kambia, Tonkolili, and Western Area Rural. This is a mobile FM station, or outside-broadcast unit, which helps SLRCS to deliver live

broadcast from the community either independently broadcast or cooperatively with the local station. With these tools, SLRCS can establish “FM station” in the field within one hour. The benefit of outside-broadcast is the possibility of getting feedback from the community members.

- Orientation training was conducted to strengthen the community engagement along the border, and 90 community volunteers received training and are now carrying out activities in 21 crossing point out of 54 crossing points in 3 chiefdom.
- Red Cross is leading community engagement interventions through the use of its 17 information kiosks in Kambia districts.
- In Port Loko district, the Red Cross achieved the following in the reporting period through the UNICEF-Led Social mobilisation initiative;
 - 19,009 people (9920 male, 5,858 female and 3,231 children) in 485 communities were reached through house to house, interpersonal communication, and visit.
 - 170,000 People were reached through mass awareness campaigns including radio in the box, Use of information kiosks, Use of sound track in the vehicle, bush to bush campaign targeting traditional healers, Motorbike riders with Ebola prevention messages.
 - 984 mosquito nets, 694bags, 694 Aprons for visibility, 694 rain gears were distributed to Red Cross volunteers within the district.
 - 200 hundred community champions identified from the community.
 - 699 neighbourhood watch committees established. This are committee that exist in the village formed by chiefdom stakeholders (comprising youths, religious leaders, woman leaders, tradition healers)
- “Red Cross Nar Salone” TV and radio shows:
 - 36 TV shows were broadcasted through SLBC TV,
 - 43 radio shows were broadcasted nation-wide through SLBC FM,
 - 14 through Star FM, and
 - 204 episodes in 12 districts.

Challenges:

- Most guests requested for financial incentive as part of their participation radio and TV talk shows.

Planning:

- Voice over of Ebola animation video into eight local languages: Krio, Kissi, Fulla, Mende, Themne, Susu, Limba, and Kono. The video is produced by IFRC and UNICEF, using English narration.
- Comparative analysis on technical aspects and footprint coverage of TV stations.
- Developing IVR information and coding - draft will be presented to Health and DRR departments for inputs.
- Organizing monitoring activities on the content broadcast for the branches.
- Conducting 50 radio-in-a-box and forum theatre shows in Western Area: 50 shows in 50 wards.

B. Psychosocial Support

Highlights

- Psychosocial support to by staff and volunteers still ongoing.

Challenges

- There is still a gap of the IFRC PSS delegate to support the SLRCS counterpart in rolling out PSS.

Planning

- IFRC country office is supporting with the recruitment a PSS delegate.

C. Surveillance and Contact TracingHighlights

- In Community Event Based Surveillance (CEBS): 801 community-based volunteers and 24 volunteer supervisors in Port Loko district had the first month of reporting on suspected cases with EVD symptoms and triggering events for Ebola. Reporting is done via phone call from community volunteer to supervisors, who again report to DHMT/DERC for response.
- A high number of under 5 mortality has been detected. This has been shared with Concern and WHO, who are currently collecting data on the under 5 mortality situation in Sierra Leone, and to assess the need for interventions.

Planning

- Distribution of motorbikes in Bonthe, Koinadugu and Port Loko to CEBS supervisors
- Training for community-based volunteers on CEBS events reporting.

D. Case Management in Red Cross Ebola Treatment Centres - Kenema and KonoHighlights

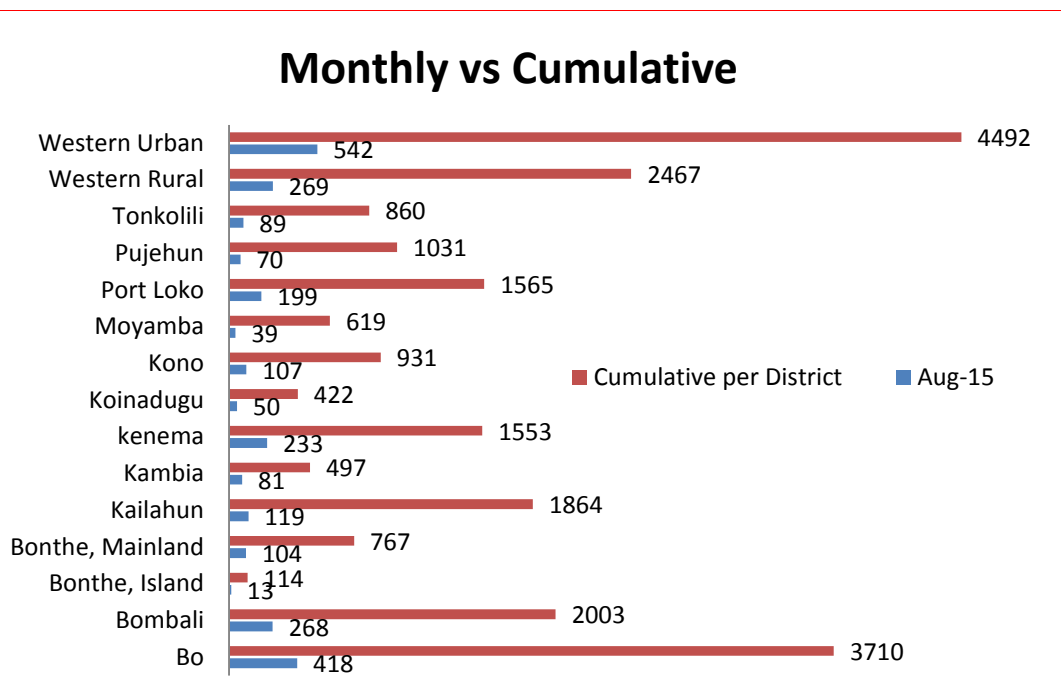
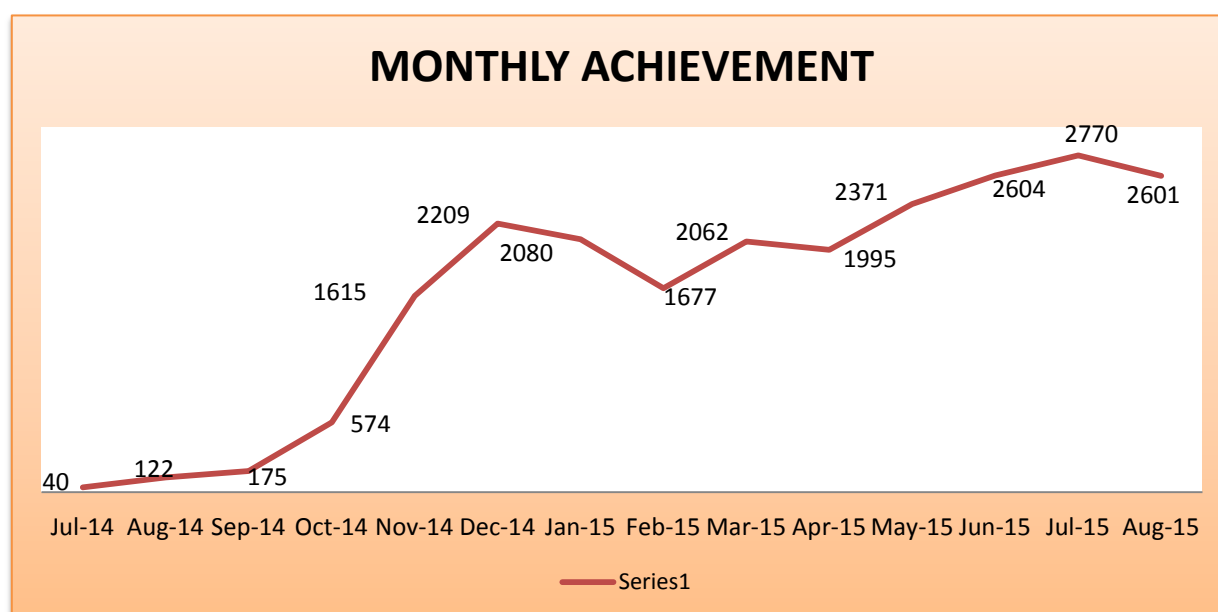
- IFRC continues to support the decontamination and deconstruction of the ETC in Kenema, fencing of the ETC cemetery and rehabilitation of the VHF ward in Kenema hospital.

Challenges

- As the number of patients drastically goes down (6 to 7 patients per week of suspected cases); there is a risk that the staff becomes complacent risking reinfection.

E. Safe and Dignified Burials and DisinfectionsHighlights

- The Red Cross SDB teams continue with more than 50% of all the safe burials conducted across the country - 2,601 burials were conducted this month.
- The NERC on the advice of the Red Cross and other actors has changed the burial procedures in Western Area to allow families to bury at cemeteries of choice. Previously there was only one designated cemetery some distance from the city, so this procedure has been changed to facilitate families to be present at the funerals and allow them to easily visit the graves. It is also hoped that the change will result in a decrease in secret non-approved burials.
- The SDB standard operating procedures are maintained and enforce that all burials must be carried out within 24 hours with the exceptions of Medico Legal and Repatriated corpses.
- SLRCS is training an additional six teams to bring their capacity to 61 teams nationwide. The remaining teams are from the Ministry of Health and Sanitation supported by a consortium consisting of Concern Worldwide, CRS, World Vision and CAFOD.
- SLRCS has trained an additional eight female burial team members to ensure better gender balance in our teams in Tonkolili district.

Graph 1: Cumulative burials conducted by the Red Cross teams per district**Graph 2: Monthly achievement**

Challenges

- Due to the persistent request from Funeral Homes to get in to their livelihood business, the Burial Pillar has been asked to analyse the situation with suggestion / recommendation to be submitted to His Excellency the President.
- The rain season is making other Implementing Organizations unable to carry out burials as mandate due to the lack of appropriate vehicles and the inaccessible areas. This has resulted into increased workload on Red Cross burial teams in a number of Districts as they are called upon to fill the gap.

Planning

- Training of 6 to 8 new teams to reduce the workload on current teams
- WatSan / IPC training
- Participation of SLRCS staff at the RDRT Training focussed on WatSan in Abidjan

Capacity building of the National Societies

The IFRC is committed to support GRC in re-building institutional capacity and improve services delivery to the most vulnerable persons beyond the EVD crisis. In this regard, the IFRC country office in Guinea in collaboration with other Movement partners present in Guinea, ICRC, French and Danish Red Cross have initiated a monthly Movement coordination meeting since June. Among other things, the epidemiological situation, security updates, follow up on anti-corruption and fraud policy workshop and highlights on the recovery phase were discussed. Under the leadership of IFRC, internal EVD specific meetings for the NS have become regular.

In terms of human resources management, IFRC has been supporting recruitment of new professional staff in WASH, disaster management, SDB, finance and organizational development. In addition, IFRC has provided consistent support in rehabilitating and building new facilities, including the headquarters, to cope with the growing staff and huge humanitarian needs. The current headquarter office is under renovation and will be transformed into a National Training Centre.

GRC with the support of IFRC has achieved the validation of the 2015 - 2010 Strategic Plan. With the deployment of the National Society Development delegate, IFRC has played a key role in this process since its beginning early this year.

Regional Coordination and Preparedness

The EVD *preparedness* component remains important to the non-affected countries as well as the affected country when building on the learning from the experience on the intervention of the NS involved in the response. Therefore, efforts in preventing further spread into other countries or EVD cleared areas and preparing NS to adapt their strategies towards such epidemics will continue to be a priority for the IFRC to accompany the NS.

Highlights:

- A cross-border operational coordination workshop was held attended by four countries; Guinea, Guinea Bissau, Liberia and Sierra Leone with the four main EVD hotspots observed in the West Africa outbreak. A comprehensive plan of action has been developed as part of the three affected countries' plans and that of Guinea Bissau that is geared toward readiness.
- In collaboration with the beneficiary communication project funded by the European Union, a regional meeting was held in Abidjan for deployment of TERA application; attended by 13 NS, telecommunication regulators, mobile network operators and other government representatives including ECOWAS. Preliminary meetings were held in-country to prepare the regional consultation as TERA is becoming a valuable tool before, during and after a disaster hence appropriate in EVD context or any other epidemic.
- Niger Red Cross Society has been supported in training five trainers in SDB that will cascade the training to SDB teams in country. This initiative has enabled the NS to adopt an SDB protocol, which is serving as the basis for the national SDB protocol to be discussed with the government.
- Following recommendations of the National Coordination cell, community engagement and surveillance has been enhanced in Guinea through the deployment of a mobile radio station, "Santeyah FM". This mobile radio has been operating in prefectures bordering Guinea Bissau since June and is expected to be further deployed on the border with Sierra Leone in Forécariah. The broadcast will continue both in local languages and French to reach the maximum number of audience. Community epidemic response teams will also continue surveillance and social mobilization activities in villages along the borders of above mentioned countries.
- In terms of logistics capacity with regards to maintaining sufficient operational structure in the field, a new pool of 60 drivers is under recruitment and 60 have passed the test by end of August in Guinea. Two new field logistics delegates have arrived to support the operation. IFRC started to use own temporary warehouse in Conakry - this greatly reduces dependence on using rented warehouses and the use of the WFP warehouses, which does not accept all types of items from IFRC.

- The fact that WatSan is a major component in most epidemic response and especially the on-going EVD operation, a regional RDRT (Regional Disaster Response Team) training for 23 new contingents is being prepared to take place in Abidjan, Cote d'Ivoire. The RDRT training is envisaged to strengthen the regional surge capacity in case of EVD outbreak or other epidemics.
- With regard to the security situation in Guinea, the country representative with the assistance of the security delegate keep monitoring the political situation and potential violence with regard to the coming presidential election. Whilst the presidential election campaigns are due to start on 10th of September, evacuation and hibernation plans have been developed and will be updated as required. Due to the deadly accident involving an IFRC vehicle during cross border activities with Guinea Bissau, there are plans to disseminate security and fleet training to all IFRC Staff (delegates and national staff).

Challenges:

- Limited funding and the slow understanding of the EPF mechanism has affected the implementation of activities by certain NS;
- Lack of clearance and logistical capacity in some countries of Indian Ocean Islands is delaying the delivery of personnel protection equipment (PPE) and SDB kits;
- The planned emersion exercise as a part of the field school for the Guinea Bissau Red Cross SDB team had unfortunately been cancelled till further noticed due to a fatal road accident which resulted in the loss of one team members. This happened during the transfer of the team from Tombali to Boké the site of the emersion exercise

Planning:

- SDB refresher training of Guinea Bissau teams from Bissau, Gabu and Tombali in Gabu.
- Training of new RDRT cohorts in the specialised WatSan in epidemics context in Abidjan.
- Prepare a cross-border simulation exercise for the Guinea Bissau preparedness teams in collaboration with the Guinea EVD team in Gabu.

Risk Assessment

There is still a significant risk of further transmission. In addition to the large number of contacts who remain under observation in Guinea and Sierra Leone, 45 contacts have been lost to follow-up in the Guinean capital Conakry over the past six weeks. Several high-risk contacts have also been lost to follow-up in the Sierra Leonean capital, Freetown. Operational capacity for early detection and rapid intervention should be maintained.

Movement Coordination

Bilateral Contributions

A number of Partner National Societies have provided bilateral support to the affected countries, as well as preparedness activities in surrounding countries, including:

Partner National Societies' bilateral contributions in West Africa

Guinea	Liberia	Sierra Leone	Surrounding countries
French Red Cross	Austrian Red Cross	Austrian Red Cross	Belgian Red Cross
Belgian Red Cross	American Red Cross	Belgian Red Cross	British Red Cross
Botswana Red Cross	Botswana Red Cross	Botswana Red Cross	Canadian Red Cross
Canadian Red Cross	Canadian Red Cross	Canadian Red Cross	Danish Red Cross
Danish Red Cross	Danish Red Cross	Finnish Red Cross	French Red Cross
Spanish Red Cross	German Red Cross	Iranian Red Cross	Iranian Red Cross

Partner National Societies' bilateral contributions in West Africa

Guinea	Liberia	Sierra Leone	Surrounding countries
	Spanish Red Cross	Norwegian Red Cross Spanish Red Cross	Netherlands Red Cross Spanish Red Cross Swiss Red Cross

Funding

On behalf of the National Societies in the Ebola affected countries, the IFRC Secretariat would like to thank the following for all their contributions to the Ebola Emergency Appeals: American Red Cross and US government, Andorran Red Cross, Australian Red Cross and Australian government, Austrian Red Cross and Austrian government, Belgian government, British Red Cross and British government, Canadian Red Cross and Canadian government, Red Cross Society of China Hong Kong branch, Czech government, Danish Red Cross and Danish government, European Commission – DG ECHO, Finnish Red Cross and Finnish government, French Red Cross, German Red Cross, Icelandic Red Cross and Icelandic government, Red Crescent Society of the Islamic Republic of Iran, Irish Red Cross, Italian government, Japanese Red Cross and Japanese government, Kenyan Red Cross, Korean Red Cross, Monaco Red Cross and Monaco government, Netherlands Red Cross and Netherlands government, Norwegian Red Cross, Philippine Red Cross, Portuguese Red Cross, Qatar Red Crescent, Spanish Red Cross and Spanish government, Swedish Red Cross and Swedish government, Swiss Red Cross and Swiss government, Taiwan Red Cross Organization, UNICEF, and the International Committee of Red Cross (ICRC). In addition, the IFRC Secretariat would like to thank the following foundations and corporate partners for their contributions: Bill and Melinda Gates Foundation, Airbus, International Federation of Freight Forwarders Association, KPMG, Nestle, Nethope Inc., Shell, Sime Darby Berhad, Tullow Guinea Limited and World Cocoa Foundation.

Contact Information

For further information please contact:

- **IFRC Africa Zone:** Alasan Senghore, Zone Director, Nairobi; Tel : +254 (0) 20 2835000; Email: alasan.senghore@ifrc.org
- **IFRC Africa Zone:** Lucia Lasso, Disaster Management Delegate; Nairobi; Tel: +254 (0) 731-067469; Email: lucia.lasso@ifrc.org
- **IFRC Ghana:** Norbert Allale, Ebola Regional Operations Coordinator; Mob Accra: +233 (0) 266 444 141 ; Mob Guinea: +224 (0) 628 345 159; Roaming: +221 (0) 777 406 205; Email: norbert.allale@ifrc.org
- **IFRC Guinea:** Aliou Boly, Country Representative, Conakry. Tel: +224 (0) 621 880 995; Email: Aliou.boly@ifrc.org
- **IFRC Guinea:** Oscar Llorente, Ebola Operation Manager, Conakry; Tel: +224 (0) 623 629 430; Email: Oscar.llorente@ifrc.org
- **IFRC Liberia:** Mesfin Abay, Country Representative; Tel: +231 (0) 880 528 771; Email: mesfin.abay@ifrc.org
- **IFRC Liberia:** Ademola Alao, Ebola Operation Manager, Monrovia, el: +231 (0) 775773562; Email: ademola.alao@ifrc.org
- **IFRC Sierra Leone:** Moulaye Camara, Country Representative, Freetown; Tel: +232 (0) 792 367 95; Email: moulaye.camara@ifrc.org
- **IFRC Sierra Leone:** Andrew Jarjou, Ebola Operations Manager, Freetown. Tel:+232 (0) 767 381 16; Email: Andrew.jarjou@ifrc.org
- **IFRC Nigeria:** Samuel Matoka, Ebola Operation Manager; Lagos; Tel: +234 817 3333 212; Email: Samuel.matoka@ifrc.org
- **IFRC Senegal:** Aissa Fall, Regional Health Manager, Dakar; Email: Aissa.Fall@ifrc.org
- **IFRC Geneva:** Cristina Estrada, Senior Officer Operations Quality Assurance; Tel: +41.22.730.4260; Email: cristina.estrada@ifrc.org
- **IFRC Zone Logistics Unit (ZLU):** Rishi Ramrakha, Head of Zone Logistics Unit; Tel: +254 (0) 733 888 022/ Fax +254 20 271 2777; Email: rishi.ramrakha@ifrc.org

For Resource Mobilization and Pledges:

- **IFRC Ghana:** Terry Carney, Ebola Resource Mobilization Coordinator; Tel: +233 (0) 266 444 147; Email: terry.carney@ifrc.org . Please send all pledges for funding to zonerm.africa@ifrc.org

For Performance and Accountability (planning, monitoring, evaluation and reporting):

- **IFRC West Coast:** Terrie Takavarasha; PMER/RM Coordinator; Tel: +22506137259; Email: terrie.takavarasha@ifrc.org

How we work

All IFRC assistance seeks to adhere to the Code of Conduct for the International Red Cross and Red Crescent Movement and Non-Governmental Organizations (NGOs) in Disaster Relief and the Humanitarian Charter and Minimum Standards in Disaster Response (Sphere) in delivering assistance to the most vulnerable.

The IFRC's vision is to inspire, encourage, facilitate and promote at all times all forms of humanitarian activities by National Societies, with a view to preventing and alleviating human suffering, and thereby contributing to the maintenance and promotion of human dignity and peace in the world.

www.ifrc.org
Saving lives, changing minds.



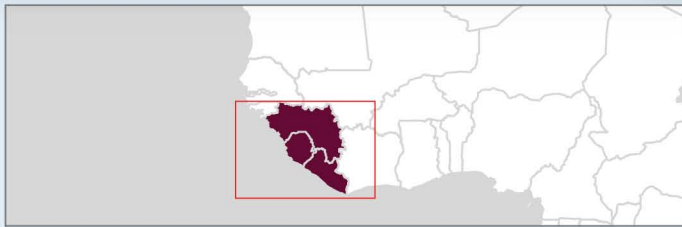
The IFRC's work is guided by Strategy 2020 which puts forward three strategic aims:

1. Save lives, protect livelihoods, and strengthen recovery from disaster and crises.
2. Enable healthy and safe living.
3. Promote social inclusion and a culture of non-violence and peace.

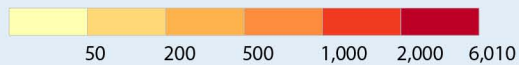
West Africa Ebola Outbreak

Cumulative Cases

11 September 2015



Total Cases (as of 07 September 2015)



Country	Cases	Deaths	TOTAL
Guinea	3,792	2,530	Cases 27,967
Liberia	10,514	4,659	Deaths 11,141
Sierra Leone	13,661	3,952	

Map distribution date: 11 September 2015


New cases and deaths include "Probable/Suspected" and "Confirmed"

Sources: GADM, Natural Earth, STEWARD Project, Africa Albers Equal Area Conic Projection, WGS 1984; Guinea - Organisation mondiale de la Sante; Liberia - Ministry of Health and Social Welfare; Sierra Leone - Ministry of Health and Sanitation

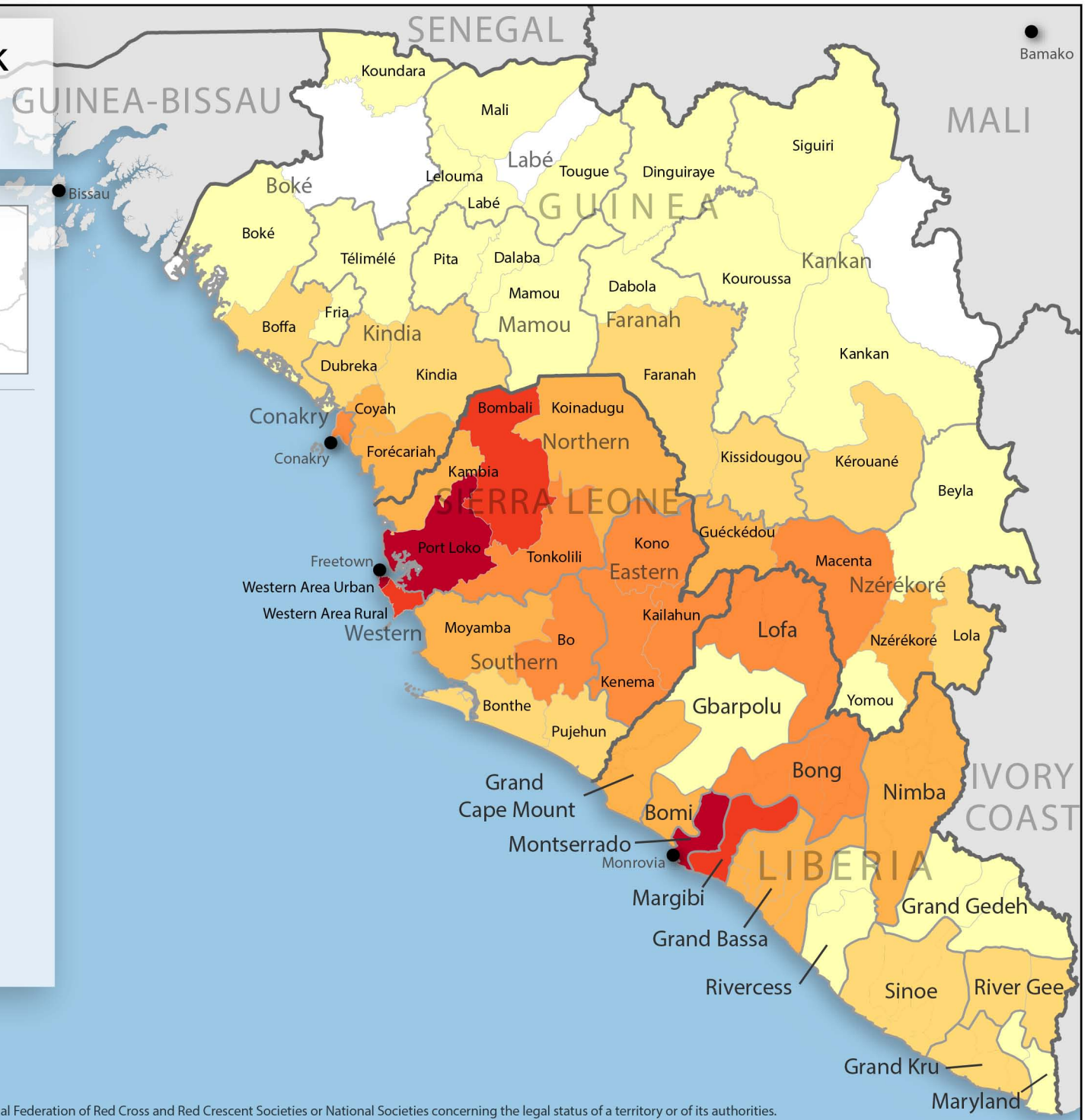
Information is subject to revision as more data becomes available.

GLIDE #: EP-2014-000039-GIN/LBR/SLE



 International Federation of Red Cross and Red Crescent Societies

Produced by SIMS, Supported by the American Red Cross and the British Red Cross



EBOLA

At a glance

Refreshed on 15-Sep-2015 at 14:18

EMERGENCY APPEALS

Appeal Code	Appeal Name	Appeal Timeframe		Budget	Funding	Coverage	Gap	Income	DREF	Expenditure	Balance	Commitments	Exp/Bud
MDR60002	Africa - Ebola Coordination and prep	19-Aug-14	31-Dec-15	15,882,441	11,426,631	72%	4,455,810	11,426,631		6,182,011	5,244,620		39%
MDRGN007	Guinea - Ebola Virus Disease	26-Mar-14	31-Dec-17	56,016,354	26,551,275	47%	29,465,079	26,560,151	0	21,647,272	4,912,879	4,131,212	39%
MDRLR001	Liberia - Ebola Virus Disease	09-Apr-14	31-Dec-17	46,253,362	21,994,736	48%	24,258,626	21,892,282	0	14,826,218	7,066,064		32%
MDRNG017	Nigeria - Ebola Virus Disease	08-Aug-14	31-May-15	1,619,444	625,755	39%	993,689	625,755	0	623,515	2,240		39%
MDRSL005	Sierra Leone - Ebola Virus Disease	06-Apr-14	31-Dec-17	94,595,428	56,232,431	59%	38,362,997	56,119,968	0	38,383,732	17,736,236		41%
MDRSN010	Senegal - Ebola Virus Disease	08-Sep-14	31-Jul-15	1,380,962	182,266	13%	1,198,696	182,266	253515	434,777	1,004		31%
TOTAL EMERGENCY APPEALS				215,747,991	117,013,094	54%	98,734,897	116,807,053	253,515	82,097,526	34,963,042	4,131,212	38%

DREF & EBOLA PREPAREDNESS FUND OPERATIONS

Appeal Code	Appeal Name	Appeal Timeframe		Budget	Funding	Coverage	Gap	Income	DREF	Expenditure	Balance	Commitments	Exp/Bud
MDR42002	Americas - Ebola Preparedness	21-Oct-14	21-Jan-15	100,000	0	N/A	0	0	100000	84,482	15,518		84%
MDR64007	East Africa - Ebola Preparedness	10-Feb-15	15-Oct-15	181,050	181,050	N/A	0	181,050		119,734	61,316		66%
MDR80001	MENA ZONE - Ebola Preparedness	05-Feb-15	05-May-15	119,324	119,324	N/A	0	119,324		68,267	51,057		57%
MDRBJ014	Benin - Ebola Virus Disease	27-Aug-14	27-Nov-14	50,204	0	N/A	0	0	35250.41	35,250	0		70%
MDRCF018	Central African Rep - Ebola Virus Di	29-Aug-14	29-Dec-14	48,697	0	N/A	0	0	33725.67	33,726	0		69%
MDRCI006	Côte d'Ivoire - Ebola Preparedness	18-Apr-14	18-Jul-14	60,950	0	N/A	0	0	59919.04	59,919	0		98%
MDRCI007	Côte d'Ivoire - Ebola Preparedness	23-Apr-15	23-Oct-15	360,000	360,000	N/A	0	360,000		29,872	330,128		8%
MDRCI008	Cote d'Ivoire - Ebola Preparedness	14-Jul-15	14-Sep-15	67,735	67,735	N/A	0	67,735		29,567	38,168		44%
MDRCM019	Cameroon - Ebola Virus Disease	24-Aug-14	25-Jan-15	49,922	0	N/A	0	0	34980.87	34,981	0		70%
MDRET014	Ethiopia - Ebola Virus Preparedness	29-Oct-14	29-Mar-15	46,641	0	N/A	0	0	39218.26	39,218	0		84%
MDRGM009	Gambia - Ebola Virus Disease Prepare	15-Sep-14	30-Jan-15	46,856	0	N/A	0	0	39712.49	39,712	0		85%
MDRGW002	Guinea Bissau - Ebola Virus Prepared	08-Oct-14	08-Jan-15	49,168	0	N/A	0	0	39436.54	39,437	0		80%
MDRKE031	Kenya - Ebola Virus Disease Prepared	23-Sep-14	23-Dec-14	59,127	0	N/A	0	0	36347.38	36,347	0		61%
MDRML010	Mali - Ebola Preparedness	18-Apr-14	31-Aug-14	57,715	0	N/A	0	0	50131.66	50,132	0		87%
MDRML011	Mali - Ebola Preparedness	19-Feb-15	19-Aug-15	59,882	59,885	N/A	0	59,885		47,639	12,246		80%
MDRSN009	Senegal - Ebola Virus Disease	11-Apr-14	24-Aug-14	54,848	0	N/A	0	0	53627.34	53,627	0		98%
MDRTD013	Chad - Ebola Virus Disease Preparedn	12-Sep-14	12-Dec-14	54,766	0	N/A	0	0	22923.93	22,924	0		42%
MDRTG005	Togo - Ebola Virus Disease	27-Aug-14	27-Nov-14	49,530	0	N/A	0	0	38127.35	38,127	0		77%
TOTAL DREF OPERATIONS				1,516,415	787,994	N/A	0	787,994	583,401	862,962	508,433		57%

Donor response

Ebola Emergency Appeals Consolidation, by Appeal

TIMEFRAME: 2014-2015

TOTAL AMOUNT SOUGHT	215,747,991
TOTAL RECEIVED TO DATE	117,013,094
APPEAL COVERAGE TO DATE	54%

	MDR60002	MDRGN007	MDRLR001	MDRNG017	MDRSL005	MDRSN010	Total
	Africa	Guinea	Liberia	Nigeria	Sierra Leone	Senegal	CHF
BUDGET	15,882,441	56,016,354	46,253,362	1,619,444	94,595,428	1,380,962	215,747,991
FUNDING							
<u>Opening Balance</u>							
Income							
Airbus		65,719	2,562				68,281
American Red Cross	242,784	1,400,883	451,884		1,308,722		3,404,274
Andorran Red Cross	6,153						6,153
Australian Government				50,441			50,441
Australian Red Cross	87,106	68,649	81,647		212,746		450,148
Austrian Red Cross (from Austrian Government)		582,579	582,579				1,165,159
Belgian Federal Government			2,407,190				2,407,190
Bill & Melinda Gates Foundation		909,770	909,770		1,053,418		2,872,958
British Red Cross	174,210	41,805	130,324		461,542	75,314	883,196
British Red Cross (from Band Aid)		143,333					143,333
British Red Cross (from British Government)			298,311		19,836,707		20,135,018
British Red Cross (from Children's Investment Fund Foundation)		2,582,799	2,375,883		1,765,146		6,723,828
British Red Cross (from DEC (Disasters Emergency Committee))		1,009,716	170,484		1,270,399		2,450,599
Canadian Red Cross	83,983				265,049		349,032
Canadian Red Cross (from Canadian Government)	490,273	1,803,118	921,325	58,969	923,578	46,250	4,243,512
ChevronTexaco Corp.			1,140				1,140
China Red Cross, Hong Kong branch			72,813				72,813
Czech Government					130,033		130,033
Danish Red Cross	50,000						50,000
Danish Red Cross (from Danish Government)		77,557					77,557
European Commission - DG ECHO	782,139	1,818,244	1,172,571	114,679	996,886		4,884,519
European Commission – FPI	6,369,242						6,369,242
FIATA-Intl Fed Freight Forwarders Assoc.		29,541			12,584		42,125
Finnish Red Cross		73,261	53,637		24,406		151,303

	MDR60002	MDRGN07	MDRLR001	MDRNG017	MDRSL005	MDRSN010	Total
	Africa	Guinea	Liberia	Nigeria	Sierra Leone	Senegal	CHF
BUDGET	15,882,441	56,016,354	46,253,362	1,619,444	94,595,428	1,380,962	215,747,991
FUNDING							
Opening Balance							
Income							
Finnish Red Cross (from Finnish Government)	144,259	417,469	290,516		266,936		1,119,181
French Red Cross		14,835	-304		88		14,619
French Red Cross (from Total)			179,962		179,569		359,530
Freshfields		3,320	2,945				6,265
German Red Cross	21,387						21,387
Guinea - Private Donors		7,423					7,423
Icelandic Red Cross	160,000				714,155		874,155
Icelandic Red Cross (from Icelandic Government)					195,600		195,600
ICRC	10,000						10,000
Infoma			2,285				2,285
Irish Red Cross Society	62,845						62,845
Israel - Private Donors	9,653						9,653
Italian Government Bilateral Emergency Fund (from Italian Government)					1,203,910		1,203,910
Italian Red Cross	220,038						220,038
Japanese Government	671,527	7,763,538	3,972,226		1,410,745		13,818,036
Japanese Red Cross Society	87,579	205,031	204,913	53,400	204,951	45,600	801,474
KPMG Disaster Relief Fund		4,158	2,053		4,158		10,369
KPMG International Cooperative(KPMG-I)	20,120	43,924	32,349		32,348		128,741
Louis Berger		309	29				338
Luxembourg - Private Donors	2,824						2,824
Monaco Government	24,030						24,030
Nestle		42,072	1,602				43,674
Nethope INC.		45,673	45,673		45,673		137,020
Norwegian Red Cross			51,244		42,728		93,972
Olam		549	1,989				2,538
On Line donations	88,607						88,607
On Line donations (from Albania - Private donors)					0		0
On Line donations (from Andorra - Private Donors)		1	1				2
On Line donations (from Antigua And Barbuda - Private donors)		0					0
On Line donations (from Argentina - Private Donors)		0	0		0		1

	MDR60002	MDRGN007	MDRLR001	MDRNG017	MDRSL005	MDRSN010	Total
	Africa	Guinea	Liberia	Nigeria	Sierra Leone	Senegal	CHF
BUDGET	15,882,441	56,016,354	46,253,362	1,619,444	94,595,428	1,380,962	215,747,991
FUNDING							
Opening Balance							
Income							
On Line donations (from Armenia - Private Donors)		0					0
On Line donations (from Australia - Private Donors)		347	357		139		842
On Line donations (from Austria - Private Donors)		6	36		26		68
On Line donations (from Azerbaijan Private Donors)		0	5		4		8
On Line donations (from Bahamas - Private Donors)		0					0
On Line donations (from Bahrain - Private Donors)		110	132		110		351
On Line donations (from Bangladesh - Private Donors)		0	0				0
On Line donations (from Barbados - Private Donors)		2	1		1		4
On Line donations (from Belarus - Private Donors)			1		3		5
On Line donations (from Belgium - Private Donors)		6	5		0		11
On Line donations (from Bermuda - Private Donors)		0			1		1
On Line donations (from Bhutan - Private donors)		0					0
On Line donations (from Bolivia Private Donors)			0		0		0
On Line donations (from Bosnia And Herzegovina - Private donors)		0					0
On Line donations (from Botswana - Private donors)			0				0
On Line donations (from Brazil - Private Donors)		48	209		166		423
On Line donations (from Brunei - Private Donors)		0			1		1
On Line donations (from Bulgaria - Private Donors)		16	27		23		66
On Line donations (from Cambodia - Private Donors)		0	0				0
On Line donations (from Cameroon Private donors)					0		0
On Line donations (from Canada - Private Donors)		423	445		161		1,028
On Line donations (from Cayman Islands - Private Donors)		0	0		0		0
On Line donations (from Chile Private Donors)		0	0		0		1
On Line donations (from China - Private Donors)		338	275		44		657
On Line donations (from Colombia - Private Donors)		2	3		4		8
On Line donations (from Costa Rica - Private Donors)		1	4		6		11
On Line donations (from Croatia - Private Donors)		0	0		0		0
On Line donations (from Cyprus - Private Donors)		0	0		1		1
On Line donations (from Czech private donors)		7	9		6		22
On Line donations (from Denmark - Private Donors)		25	17		2		44

	MDR60002	MDRGN007	MDRLR001	MDRNG017	MDRSL005	MDRSN010	Total
	Africa	Guinea	Liberia	Nigeria	Sierra Leone	Senegal	CHF
BUDGET	15,882,441	56,016,354	46,253,362	1,619,444	94,595,428	1,380,962	215,747,991
FUNDING							
Opening Balance							
Income							
On Line donations (from Dominican Republic - Private Donor)		1	1		1		4
On Line donations (from Ecuador - Private Donors)		0			1		1
On Line donations (from Egypt - Private Donors)		89	109		90		288
On Line donations (from Estonia - Private donors)		0	0		0		0
On Line donations (from Fiji Private Donors)		1	2		1		4
On Line donations (from Finland - Private Donors)		13	13		2		28
On Line donations (from France - Private Donors)		136	115		32		283
On Line donations (from French Guiana - Private donors)		0					0
On Line donations (from Georgia Private Donors)			3		3		6
On Line donations (from Germany - Private Donors)		81	61		23		166
On Line donations (from Great Britain - Private Donors)		1,935	1,559		303		3,796
On Line donations (from Greece - Private Donors)		64	118		83		265
On Line donations (from Greenland - Private donors)		0	0		0		1
On Line donations (from Guatemala Private donors)		0	0				0
On Line donations (from Guernsey - Private donors)		0			0		0
On Line donations (from Guyana Private Donors)					0		0
On Line donations (from Haiti- Private Donors)		0					0
On Line donations (from Holy See (Vatican City State) - Private donors)					0		0
On Line donations (from Hong Kong - Private Donors)		37	244		209		491
On Line donations (from Hungarian - Private Donors)		3	30		25		59
On Line donations (from icelandic RC)		2	3		1		6
On Line donations (from India - Private Donors)		25	52		86		162
On Line donations (from Indonesia - Private Donors)		5	39		31		74
On Line donations (from Iranian private donors)		0	0		0		0
On Line donations (from Ireland - Private Donors)		104	106		39		249
On Line donations (from Isle Of Man - Private donors)					0		0
On Line donations (from Israel - Private Donors)		0	7		7		14
On Line donations (from Italy - Private Donors)		2	43		32		77
On Line donations (from Japan - Private Donors)		39	376		282		697
On Line donations (from Jersey - Private donors)					0		0

	MDR60002	MDRGN007	MDRLR001	MDRNG017	MDRSL005	MDRSN010	Total
	Africa	Guinea	Liberia	Nigeria	Sierra Leone	Senegal	CHF
BUDGET	15,882,441	56,016,354	46,253,362	1,619,444	94,595,428	1,380,962	215,747,991
FUNDING							
Opening Balance							
Income							
On Line donations (from Jordan - Private Donors)		3	4		3		10
On Line donations (from Kazakhstan - Private Donors)		2	3		1		5
On Line donations (from Kenya - Private Donors)		23	15		0		39
On Line donations (from Kosovo - Private donors)			0				0
On Line donations (from Kuwait - Private Donors)		157	205		102		464
On Line donations (from Latvia - Private Donors)		1	3		2		5
On Line donations (from Lebanese - Private Donors)		0	20		16		35
On Line donations (from Lithuania- Private Donors)		1	1		1		2
On Line donations (from Luxembourg - Private Donors)		0	1		1		2
On Line donations (from Macao - Private donors)			17		14		31
On Line donations (from Malaysia - Private Donors)		54	79		55		188
On Line donations (from Maldives Private Donors)			1		0		1
On Line donations (from Malta - Private Donors)		1	1		0		2
On Line donations (from Mauritius Private Donors)		13	8		0		21
On Line donations (from Mexico - Private Donors)		3	27		20		50
On Line donations (from Moldova, Republic Of - Private donors)			0		1		1
On Line donations (from Mongolia - Private Donors)			0				0
On Line donations (from Morocco Private Donors)			0				0
On Line donations (from Myanmar - Private Donors)		0	1				1
On Line donations (from Namibia - Private Donors)			1		1		2
On Line donations (from Nepal Private Donors)		0	1		1		1
On Line donations (from Netherlands Antilles - Private donors)		0					0
On Line donations (from Netherlands - Private Donors)		40	36		12		88
On Line donations (from New Zealand - Private Donors)		31	82		49		161
On Line donations (from Nicaragua Private Donors)					0		0
On Line donations (from Nigeria private donors)		3	3		2		7
On Line donations (from Northern Mariana Islands - Private donors)		0					0
On Line donations (from Norway - Private Donors)		12	131		103		247
On Line donations (from Oman - Private Donors)		135	107		31		274
On Line donations (from Pakistan Private Donors)		12	9				21

	MDR60002	MDRGN007	MDRLR001	MDRNG017	MDRSL005	MDRSN010	Total
	Africa	Guinea	Liberia	Nigeria	Sierra Leone	Senegal	CHF
BUDGET	15,882,441	56,016,354	46,253,362	1,619,444	94,595,428	1,380,962	215,747,991
FUNDING							
Opening Balance							
Income							
On Line donations (from Panama Private donors)		2	8		8		17
On Line donations (from Peru - Private Donors)		0	0		0		1
On Line donations (from Philippines - Private Donors)		1	33		24		58
On Line donations (from Poland - Private Donors)		4	16		15		35
On Line donations (from Portuguese - Private Donors)		3	37		29		69
On Line donations (from Puerto Rico - Private donors)		1	4		3		8
On Line donations (from Qatar Private Donors)		155	182		153		490
On Line donations (from Republic of Korea - Private Donors)		5	96		75		176
On Line donations (from Romania Private Donors)		1	1		1		2
On Line donations (from Russia - Private Donors)		27	52		30		108
On Line donations (from Salvador - Private Donors)			0				0
On Line donations (from Saudi Arabia - Private Donors)		39	157		129		325
On Line donations (from Serbia - Private Donors)		0			0		0
On Line donations (from Sierra Leone - Private Donors)			28		22		50
On Line donations (from Singapore - Private Donors)		133	414		334		880
On Line donations (from Slovakia Private Donors)		5	3				9
On Line donations (from Slovenia - Private Donors)		1	1		1		3
On Line donations (from South Africa - Private Donors)		9	20		14		43
On Line donations (from Spain - Private Donors)		83	155		90		328
On Line donations (from Sri Lanka - Private Donors)		1	29		29		58
On Line donations (from St Kits and Nevis Private donor)		0					0
On Line donations (from Swedish - Private Donors)		66	180		119		365
On Line donations (from Switzerland - Private Donors)		462	324		33		819
On Line donations (from Syria Private Donors)					1		1
On Line donations (from Taiwan - Private Donors)		113	230		121		463
On Line donations (from Tajikistan - Private Donors)		0	1				1
On Line donations (from Tanzania - Private Donors)		0					0
On Line donations (from Thailand - Private Donors)		28	63		46		137
On Line donations (from Trinidad & Tobago - Private Donors)		0	1		2		4
On Line donations (from Tunis Private Donors)			0				0

	MDR60002	MDRGN007	MDRLR001	MDRNG017	MDRSL005	MDRSN010	Total
	Africa	Guinea	Liberia	Nigeria	Sierra Leone	Senegal	CHF
BUDGET	15,882,441	56,016,354	46,253,362	1,619,444	94,595,428	1,380,962	215,747,991
FUNDING							
Opening Balance							
Income							
On Line donations (from Turkey - Private Donors)		13	20		13		45
On Line donations (from Uganda - Private Donors)		0			0		0
On Line donations (from Ukraine private donors)		2	9		6		17
On Line donations (from Unidentified donor)		1	1		2		5
On Line donations (from United Arab Emirates - Private Donors)		252	427		351		1,030
On Line donations (from United States - Private Donors)		5,846	7,142		3,662		16,650
On Line donations (from Uruguay - Private Donors)		0	0		0		1
On Line donations (from Venezuela - Private Donors)		0	0		0		1
On Line donations (from Vietnam - Private Donors)		5	5		9		18
On Line donations (from Virgin Islands, U.S. - Private donors)					0		0
On Line donations (from Zimbabwe - Private Donors)		1					1
Philippine Red Cross	24,110						24,110
Philips Foundation		3,584					3,584
Portuguese Red Cross		1,804					1,804
Qatar Red Crescent Society	9,501						9,501
Red Crescent Society of Islamic Republic of Iran		25,000			10,000		35,000
Red Cross of Monaco	28,191	18,213	12,142	18,096	18,097	15,102	109,842
Shell				61,599			61,599
Sime Darby Berhad			142,332				142,332
Spanish Government	753,067		1,613,715		3,872,916		6,239,698
Spanish Red Cross					284,955		284,955
Swedish Red Cross		1,021,899	1,299,160		830,362		3,151,421
Swiss Red Cross	19,245				308,312		327,557
Swiss Red Cross (from Swiss Government)		800,000	1,000,000		1,700,000		3,500,000
Switzerland - Private Donors	1,407						1,407
Taiwan Red Cross Organisation		26,415					26,415
The Netherlands Red Cross	130,370	1,328,161	584,178		74,329		2,117,038
The Netherlands Red Cross (from Netherlands Government)	965,448	723,726	723,726	241,651	1,206,285		3,860,836
The Netherlands Red Cross (from Netherlands Red Cross Silent Emergency Fund)		48,840			51,875		100,715

	MDR60002	MDRGN007	MDRLR001	MDRNG017	MDRSL005	MDRSN010	Total
	Africa	Guinea	Liberia	Nigeria	Sierra Leone	Senegal	CHF
BUDGET	15,882,441	56,016,354	46,253,362	1,619,444	94,595,428	1,380,962	215,747,991
FUNDING							
Opening Balance							
Income							
The Republic of Korea National Red Cross		30,000		30,000			60,000
The Thai Red Cross Society (from Taiwan Red Cross Organisation)	199,676						199,676
Toyota Motor Corp.					19,102		19,102
Tullow Guinea Limited		181,376					181,376
UNDP - United Nations Development Programme					1,789,863		1,789,863
UNICEF - United Nations Children's Fund	46,911		174,644				221,555
Unidentified donor		700	236				936
United States Government - USAID		2,899,190	969,744		12,516,309		16,385,243
World Cocoa Foundation	138,598	181,163					319,761
Cash contributions	12,125,284	26,456,967	20,954,277	628,835	55,252,171	182,266	115,599,801
British Red Cross		100	100		100		300
Finnish Red Cross					162,531		162,531
Spanish Red Cross					4,050		4,050
Swiss Red Cross					127,872		127,872
The Netherlands Red Cross		30,078	11,790		162,539		204,407
UNICEF - United Nations Children's Fund			541,093				541,093
Inkind Goods & Transport		30,178	552,983		457,092		1,040,253
Australian Red Cross			65,515				65,515
British Red Cross		2,452	68,874				71,326
British Red Cross (from British Government)					69,820		69,820
Canadian Red Cross	6,230	20,348			44,015		70,593
Canadian Red Cross (from Canadian Government)	26,939	45,355					72,294
Danish Red Cross			220,486				220,486
Finnish Red Cross	21,245		73,035				94,281
French Red Cross		12,450					12,450
Irish Red Cross Society			5,035				5,035
Kenya Red Cross Society			16,467				16,467

	MDR60002	MDRGN007	MDRLR001	MDRNG017	MDRSL005	MDRSN010	Total
	Africa	Guinea	Liberia	Nigeria	Sierra Leone	Senegal	CHF
BUDGET	15,882,441	56,016,354	46,253,362	1,619,444	94,595,428	1,380,962	215,747,991
FUNDING							
Opening Balance							
Income							
New Zealand Red Cross			46,797				46,797
Norwegian Red Cross					61,457		61,457
Spanish Red Cross					7,924		7,924
Swiss Red Cross	35,933				20,173		56,106
United States Government - USAID					287,647		287,647
Inkind Personnel	90,347	80,605	496,209		491,036		1,158,198
Airbus		-3,263					-3,263
British Red Cross (from British Government)					573		573
DFID Partnership Allocations	-787,994						-787,994
KPMG International Cooperative(KPMG-I)	-1,006	-2,196	-1,617		-1,617		-6,437
Nestle		-2,100					-2,100
Shell				-3,080			-3,080
Sime Darby Berhad			-7,117				-7,117
Sundry Income		153			7,880		8,032
Toyota Motor Corp.					-955		-955
Tullow Guinea Limited		-9,069					-9,069
United States Government - USAID					26,251		26,251
Other Income	-789,000	-16,475	-8,734	-3,080	32,131		-785,158
Total Income	11,426,631	26,551,275	21,994,736	625,755	56,232,431	182,266	117,013,094
TOTAL FUNDING	11,426,631	26,551,275	21,994,736	625,755	56,232,431	182,266	117,013,094
COVERAGE	72%	47%	48%	39%	59%	13%	54%

ADDITIONAL CONTRIBUTIONS TO THE OPERATION (based on information Logistics received from partners)

	MDR60002	MDRGN007	MDRLR001	MDRNG017	MDRSL005	MDRSN010	Total
	Africa	Guinea	Liberia	Nigeria	Sierra Leone	Senegal	CHF

Bilateral Contributions

American Red Cross		38,148	38,148
British Red Cross		3,123	3,123
Canadian Red Cross		660,710	660,710
Danish Red Cross		25,089	25,089
Finnish Red Cross		155,627	155,627
French Red Cross	20,000		20,000
German Red Cross		845,560	845,560
Norwegian Red Cross		488,004	488,004
Spanish Red Cross		563,590	563,590
Swiss Red Cross	39,500		39,500
Total Bilateral Contributions	59,500	2,779,850	2,839,350