

www.ifrc.org
Saving lives,
changing minds.

Emergency appeal

Hungary: Population movement

 International Federation
of Red Cross and Red Crescent Societies

Appeal n° MDRHU004

120,000 people to be assisted

Appeal launched 17 September 2015

Glide n° OT-2015-000069-HUN

3.58 m Swiss francs Appeal
budget

Appeal ends April 2016 (7 months)

This **Emergency Appeal** seeks **3,582,099 Swiss francs** on a preliminary basis to support the **Hungarian Red Cross (HRC)** to respond to the needs of **120,000 people** for **seven months**. The operation will **focus on the distribution of bottled water and basic non-food items, prepositioning of food and non-food relief items, health care including first aid, screening, and psychosocial support, hygiene promotion, restoring family links (RFL), and National Society capacity building.**

The planned response reflects the current situation and information available at this point of the evolving operation. This Emergency Appeal will be revised shortly following a detailed assessment and to reflect the changing humanitarian situation.

Details are available in the Emergency Plan of Action (EPoA) [<click here>](#)

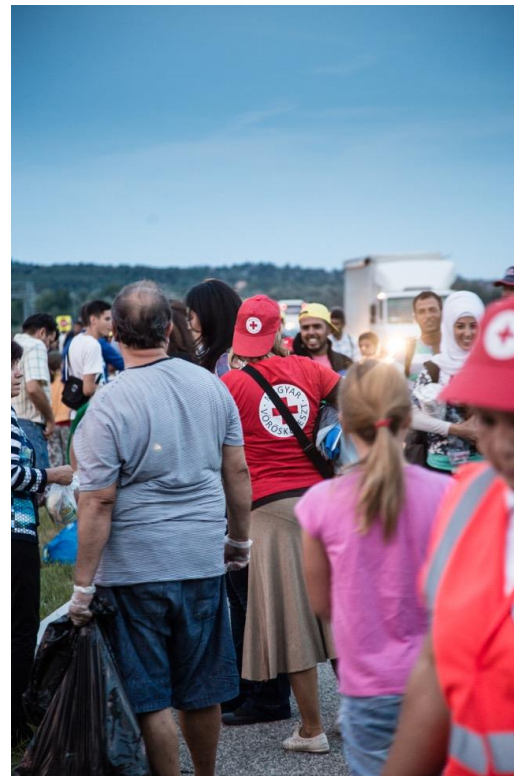
The disaster and the Red Cross and Red Crescent response to date

From June 2015 onwards: increasing numbers of people arrive in Hungary in transit to other destinations in western and northern Europe.

5 August 2015: 322,365 Swiss francs released from the IFRC's Disaster Relief Emergency Fund (DREF) to meet the immediate needs of 72,000 migrants handled by the Röszke Pre-registration Facility. Action to address sanitary and psychological conditions with a special focus on hygiene needs for women and infants and the provision of psychosocial support.

By the first week of August an average of 1,500 migrants were being registered along the border on a daily basis. This number consistently grew over the first and second week of September, with the daily figure increasing to over 3,500 people a day and the highest recent number recorded of 5,809 newly arrived migrants on 13 September.

17 September 2015: Responding to the situation, the humanitarian need, and a request from the Hungarian Red Cross, Emergency Appeal launched on a preliminary basis for 3.58m Swiss francs for 120,000 beneficiaries.



Red Cross volunteers distribute relief items on the highway to migrants walking from Budapest to the Austrian border.

Photo: Stephen Ryan / IFRC

The operational strategy

Summary of the situation, needs assessment and beneficiary selection

Since June 2015 Europe has witnessed a dramatic increase in the flow of migrants. Hungary is geographically situated on the east to west Balkan migration routes, and is considered a transit country for migrants' intent on reaching European Union countries. The situation escalated during the last weeks of July, and by the first week of August some 1,500 migrants on average were being registered on a daily basis along the border. This number consistently grew over the first and second weeks of September, and the daily arrival figures have increased to over 3,500 people a day with the highest number recorded of 5,809 newly arrived migrants on 13 September.

In 2015 a total of more than 196,300 persons have been registered, with 170,076 asylum applications received as of 13 September 2015. Most of the migrants have arrived in Hungary's Csongr d County, which lies at the country's southern Serbian border.

With the financial support of the IFRC's DREF a three-month plan of action was developed in August 2015 to scale-up the Hungarian Red Cross's efforts to assist and protect migrants arriving in the country. With the support of the IFRC, the National Society has been able to provide relief and hygiene-related services, first aid, as well as tracing services with the support of the ICRC for around 30,000 people to date.

Migrants (in particular marginalized groups such as single mothers and their children) lack the necessary information to make informed and sound decisions and to support healthy and safe behaviour. The National Society will work to ensure their well-being, dignity and safety while in transit, and to provide much needed assistance through the provision on food, water, non-food items (NFI), health care, hygiene promotion and RFL. This will be done through strong communication and engagement with those migrating to or through the country.

The assistance is focused on those accommodated at reception and pre-registration centres, collection points, transit locations and on the border between Serbia and Hungary. A priority focus is on assisting pregnant women and new-born babies, single parent households, and persons with acute or serious health conditions. This Emergency Appeal expects to address the needs of up to 120,000 people.

The Appeal will support the National Society in the following immediate actions

1. Water, sanitation, and hygiene promotion
2. Procurement, prepositioning, and distribution of food and basic non-food relief items
3. Health care and information
4. Restoring Family Links (RFL)
5. National Society capacity building

The operational plan is fully in line with the IFRC's mandate, policies, and commitments, and seeks to provide critically needed humanitarian aid to the intended beneficiaries over the coming seven months.

Coordination and partnerships

The operational management team at the Hungarian Red Cross headquarters has been ensuring support to its branches and volunteers, particularly those in the most affected areas.

The IFRC's Europe Regional Office located in Budapest, Hungary is the primary point of interaction with the Hungarian Red Cross. The IFRC's Secretary General visited Hungary on 13 September and participated in a field visit to R szke and in a coordination meeting with Hungarian Red Cross management.

The ICRC and the IFRC are working together with National Red Cross and Red Crescent Societies across the Mediterranean region, including the Hungarian Red Cross, to better respond to the needs of migrants particularly in the fields of protection, assistance and humanitarian diplomacy.

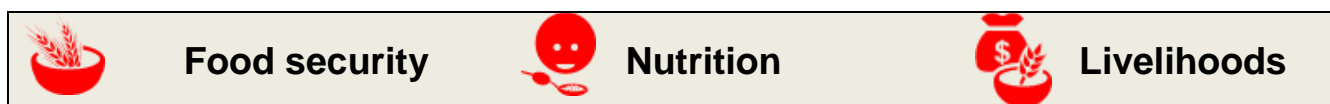
The Hungarian Red Cross Tracing Service is working closely with the ICRC Delegation and the ICRC's coordinator in Belgrade for RFL issues and forensic services, and the RFL component of this operation was planned in coordination with the ICRC Belgrade Office.

A number of governmental and non-governmental actors are providing services to migrants and asylum seekers in Hungary. The Hungarian Red Cross maintains regular contact with these actors and with the relevant Government authorities.

The Ministry of Human Capacities manages regular meetings to assess the current situation and to discuss the response, and to coordinate service provision in terms of geographical areas of focus.

UNHCR organizes regular meetings to further strengthen coordination and referral pathways amongst the concerned actors.

Proposed sectors of intervention



Outcome 1: Hungarian Red Cross is ready to address a deterioration of the humanitarian situation through the distribution of food stocks

Output 1.1 Hungarian Red Cross has a contingency stock of 50,000 food packs for adults and 10,000 food packs for babies.

Shelter and settlements (including basic non-food item relief distribution and contingency stock)

Outcome 2: Non-food assistance is provided to migrants.

Output 2.1 Migrants receive baby carriers, blankets and raincoats from the Hungarian Red Cross.

Outcome 3: Hungarian Red Cross is ready to address a deterioration of humanitarian situation through availability of stock.

Output 3.1 Hungarian Red Cross has a contingency stock of tents, blankets, camp beds and sleeping bags.

Restoring Family Links (RFL)

Outcome 4: Family links are restored wherever people are separated from, or stay without news of, their families.

Output 4.1 The Hungarian Red Cross monitors the situation and mobilizes its assets based on updated needs.

Health and care

Outcome 5 The target population's basic health needs are met through the action of mobile first aid teams and through provision of information on prevention of infectious diseases.

Output 5.1 First aid, basic health screening and care services are provided to the arriving migrants, with a particular focus on essential drug and medication refills and middle upper arm circumference (MUAC) malnutrition screening (systematically in children under 5 five years of age). Pregnant women will be identified and provided with a nutrition status check-up and necessary information.

Psychosocial support

Outcome 6: The psychosocial needs of migrants and Red Cross / Red Crescent personnel assisting them are met

Output 6.1 Psychosocial support is provided to migrants and personnel.



Water; Sanitation; Hygiene promotion

Outcome 7: The Hungarian Red Cross assist public efforts to meet the water needs of migrants.

Output 7.1 Some 120,000 migrants receive bottled water.

Outcome 8: The risk of sanitation-related diseases is reduced through the distribution of basic hygiene kits and hygiene promotion activities.

Output 8.1 Conduct further assessment of the sanitation situation of target population.

Output 8.2 75,000 men, 33,000 women, and 12,000 infants receive hygiene parcels tailored to their specific needs.

Output 8.3 Good hygiene practices are promoted among migrants through the distribution of hygiene promotion leaflets.

Output 8.4 Hungarian Red Cross volunteers and staff involved in the operation received hygiene promotion training.



National Society capacity building

Outcome 9: The functionality of the distribution process and the logistics capacity of the National Society is guaranteed.

Output 9.1 The warehouse capacity of the National Society is increased.

Output 9.2 The fleet capacity of the National Society is increased.

Output 9.3 Four outreach posts are set up in collection points.

Outcome 10: The Hungarian Red Cross capacities are built up for delivering better services to vulnerable populations.

Output 10.1 The Hungarian Red Cross receives specialized training for managing the crisis.

Quality programming / Areas common to all sectors

Outcome 11: The quality of this operation and future operations is ensured.

Output 11.1 The Hungarian Red Cross assesses and monitors the situation and deploys its teams as the situation evolves.

Output 11.2 A lessons learned workshop is organized at the end of the operation.



Programme support services

Based on the technical and coordination support required to deliver the Emergency Plan of Action (EPOA) framework, the following support functions will be put in place to ensure an effective and efficient technical coordination by the Hungarian Red Cross: human resources, logistics and supply chain services; information technology support (IT); communications; security; planning, monitoring, evaluation, and reporting (PMER); and administration and finance. Support will also be provided to enable communications and engagement with migrants to gather feedback and ensure all assistance is appropriate and well-targeted, in the process providing a voice for vulnerable migrants.

For more details please refer to the EPoA.

€ Budget

See attached IFRC Secretariat budget for details.

Elhadj As Sy
Under Secretary General (a.i.)
Programme Services Division

Elhadj As Sy
Secretary General

Reference documents



Click here for:

- [Emergency Plan of Action \(EPoA\)](#)

Contact Information

For further information specifically related to this operation please contact:

In the Hungarian Red Cross

- Istvan Kardos, Director General; phone: +36-1 374 1300; email: istvan.kardos@redcross.hu

In the IFRC Europe Regional Office

- Seija Tyrninoksa, Head of Country Cluster; phone: +36 1 888 4532; email: seija.tyrninoksa@ifrc.org
- Alberto Monguzzi, Disaster Management Coordinator; phone: +36 1 888 4500; email: alberto.monguzzi@ifrc.org

In IFRC, Geneva

- Cristina Estrada, Operations Support; phone: +41 22 7304260; email: cristina.estrada@ifrc.org

For Resource Mobilization and Pledges:

- **IFRC Europe Regional Office:** Sophia Keri, Grant Administration Officer, phone: +36 1 888 4504; email: sophia.keri@ifrc.org

For Performance and Accountability (planning, monitoring, evaluation and reporting enquiries)

- **IFRC Europe Regional Office:** Imre Nagy, Planning and Reporting Manager phone: +36 1 888 4526, email: imre.nagy@ifrc.org

How we work

All IFRC assistance seeks to adhere to the **Code of Conduct** for the International Red Cross and Red Crescent Movement and Non-Governmental Organizations (NGO's) in Disaster Relief and the **Humanitarian Charter and Minimum Standards in Humanitarian Response (Sphere)** in delivering assistance to the most vulnerable. The IFRC's vision is to inspire, **encourage, facilitate and promote at all times all forms of humanitarian activities** by National Societies, with a view to **preventing and alleviating human suffering**, and thereby contributing to the maintenance and promotion of human dignity and peace in the world.

The IFRC's work is guided by Strategy 2020 which puts forward three strategic aims:



Save lives,
protect livelihoods,
and strengthen recovery
from disaster and crises.



Enable **healthy**
and **safe** living.



Promote social inclusion
and a culture of
non-violence and **peace.**

EMERGENCY APPEAL

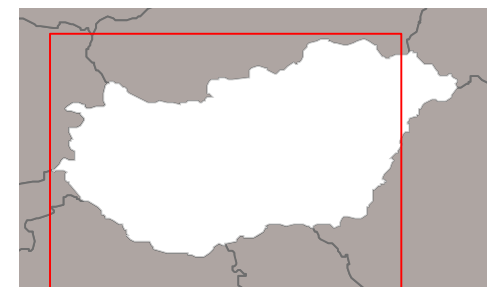
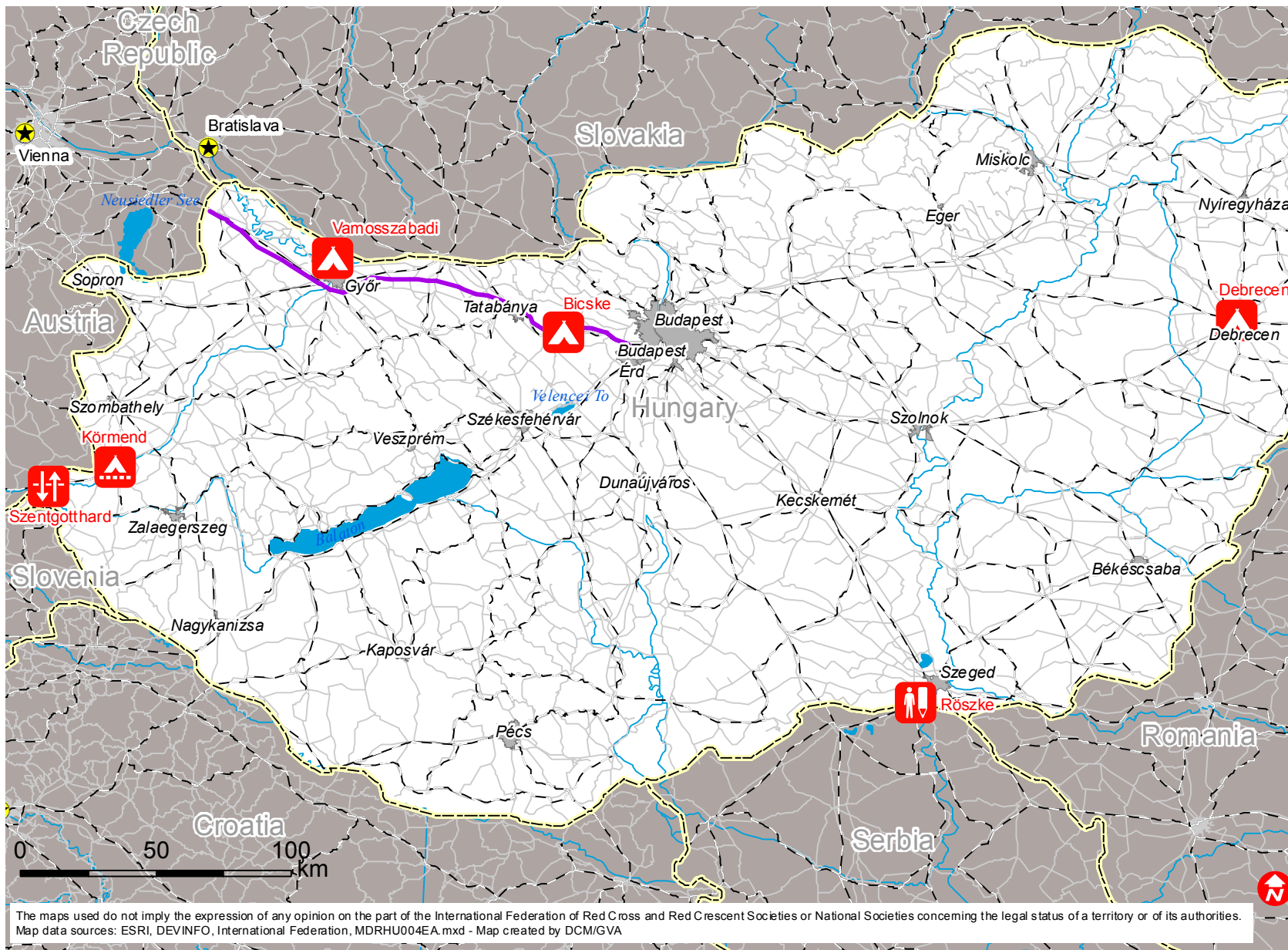
15/09/2015

MDRHU004 Hungary: Population Movement

Budget Group	Multilateral Response	Inter-Agency Shelter Coord.	Bilateral Response	Appeal Budget CHF
Shelter - Relief	31,000			31,000
Shelter - Transitional				0
Construction - Housing				0
Construction - Facilities	74,200			74,200
Construction - Materials				0
Clothing & Textiles	452,250			452,250
Food	107,200			107,200
Seeds & Plants				0
Water, Sanitation & Hygiene	1,509,416			1,509,416
Medical & First Aid	163,355			163,355
Teaching Materials	20,000			20,000
Utensils & Tools				0
Other Supplies & Services				0
Emergency Response Units				0
Cash Disbursements				0
Total RELIEF ITEMS, CONSTRUCTION AND SUPPLIES	2,357,421	0	0	2,357,421
Land & Buildings				0
Vehicles	98,000			98,000
Computer & Telecom Equipment				0
Office/Household Furniture & Equipment				0
Medical Equipment				0
Other Machinery & Equipment				0
Total LAND, VEHICLES AND EQUIPMENT	98,000	0	0	98,000
Storage, Warehousing	23,012			23,012
Distribution & Monitoring	36,750			36,750
Transport & Vehicle Costs	59,195			59,195
Logistics Services				0
Total LOGISTICS, TRANSPORT AND STORAGE	118,957	0	0	118,957
International Staff				0
National Staff				0
National Society Staff	244,279			244,279
Volunteers	378,211			378,211
Total PERSONNEL	622,490	0	0	622,490
Consultants				0
Professional Fees	45,473			45,473
Total CONSULTANTS & PROFESSIONAL FEES	45,473	0	0	45,473
Workshops & Training	41,317			41,317
Total WORKSHOP & TRAINING	41,317	0	0	41,317
Travel	1,000			1,000
Information & Public Relations	13,982			13,982
Office Costs	51,746			51,746
Communications	9,800			9,800
Financial Charges				0
Other General Expenses				0
Shared Office and Services Costs				0
Total GENERAL EXPENDITURES	76,528	0	0	76,528
Partner National Societies				0
Other Partners (NGOs, UN, other)				0
Total TRANSFER TO PARTNERS	0	0	0	0
Programme and Supplementary Services Recovery	218,412			218,412
Total INDIRECT COSTS	218,412	0	0	218,412
Pledge Earmarking & Reporting Fees	3,500			3,500
Total PLEDGE SPECIFIC COSTS	3,500	0	0	3,500
TOTAL BUDGET	3,582,099	0	0	3,582,099
Available Resources				
Multilateral Contributions				0
Bilateral Contributions				0
TOTAL AVAILABLE RESOURCES	0	0	0	0
NET EMERGENCY APPEAL NEEDS	3,582,099	0	0	3,582,099



Hungary: Population movements



- Asylum facilities
- Temporary asylum facility
- Pre registration center
- Border crossing point
- Capitals
- Railroad
- M1
- Main roads
- Main cities
- International boundaries