

Emergency appeal Malawi: Food Insecurity



International Federation
of Red Cross and Red Crescent Societies

Appeal n° **MDRMW012**

10,000 people to be assisted

Appeal launched **September 2015**

74,900 Swiss franc DREF allocated

Appeal ends **March 2016**

749,268 Swiss franc Appeal budget

Summary

This Emergency Appeal seeks **749,268 Swiss francs** to enable the IFRC to support the **Malawi Red Cross Society (MRCS)** to respond to the food security needs of a total of **10,000 drought and flood-affected beneficiaries for six months**. The strategy entails the immediate provision of food assistance and strengthening community resilience in two southern districts of Nsanje and Phalombe to allow vulnerable households to meet their basic food needs. Within the 10,000 targeted beneficiaries, a medium-term intervention will support 1,000 households (5,000 people) through the provision of agricultural inputs for the 2015/16 cropping season. Agricultural training will also be conducted with 100 lead farmers who will cascade the knowledge and skills to the targeted beneficiaries. This appeal reflects the current situation and will be continuously updated and adjusted based on the evolving nature of the crisis, new developments and detailed assessments.

Details are available in the [Emergency Plan of Action](#) (EPoA) <click here>

The disaster and the Red Cross and Red Crescent response to date

January 2015: A slow onset of the rainy season was followed by severe flooding that washed away crops, leaving arable land covered with sand, and leading to widespread crop failure or low yields.

July 2015: the Malawi Vulnerability Assessment Committee (MVAC) report estimated that maize production is reduced by 30 per cent from 2014, and a total of USD 39 million is required to meet the food needs.

17 September 2015: Emergency Appeal launched for 749,268 Swiss francs for 10,000 people, with 74,900 Swiss francs allocated from DREF as start-up funding.

The operational strategy

Needs analysis and beneficiary selection

The operation will provide immediate food assistance through cash transfers to 2,000 households in the two southern districts of Nsanje and Phalombe affected by the floods and drought situation. The MRCS is already well established in terms of food insecurity programming capacity. In Nsanje, a total of 109,942¹ persons are considered affected by the emergency food insecurity crisis, while in Phalombe a total of 120,000² people are considered affected. The Government and the interagency committee of humanitarian actors have developed the following criteria for beneficiary selection:

- Malnourished people
- Chronically ill persons
- Persons with disabilities
- Child-headed households
- Female-headed households

^{1&2} MVAC - July 2015

- The severely poor (those living on \$1.25 per day or less)

Beneficiary selection has been (or will be) done using participatory methods, working in close coordination with Village Civil Protection Committees, community members, and MRCS staff and volunteers by using an open vote selection process which identifies the most vulnerable. The National Society will work in close coordination with health centres to better support malnourished people, utilising information provided from health centres to select and register beneficiaries for the cash transfer programme, and working with the Ministry of Health to train volunteers in monitoring of malnutrition indicators in order to permit referral of severely malnourished people to health centres for therapeutic feeding.

Risk Assessment

While Malawi's overall national HIV prevalence is 10.3 per cent³, prevalence rates in the south of the country are estimated to be 14.9 per cent⁴. The widespread and generalized nature of the HIV epidemic in Malawi puts further strain on households trying to meet their nutritional requirements, both in terms of their increased nutritional needs and livelihoods.

The targeting of beneficiaries for the CTP will be sensitively handled to minimize the risk of the intervention creating social tensions in the households. The MRCS will provide a platform on GBV and its effects at household level during the pre-distribution phase. The MRCS will also commit to educating its staff and volunteers on GBV to equip them to respond to such cases.

Operational strategy

Immediate intervention: the MRCS will assist 10,000 people: (2,000 households) that are in a severe food insecurity situation in the Nsanje and Phalombe Districts through:

- A monthly cash transfer of 20,000 MK (CHF43) per household per month over 5 months. The transfer will be sufficient to meet the immediate food needs of a household of 5. The cash transfer value has been calculated based on the current prices of a standard food basket (50kg bag of maize, 5kg beans, 2 litres cooking oil).
- The operation will be based on mobile money transfers, working in partnership with the mobile provider Airtel Malawi who has extensive experience in implementing humanitarian cash transfers. Free Sim cards will be provided and Airtel will undertake to train staff and volunteers in the registration and transfer systems. Airtel will also be required to conduct information dissemination sessions with beneficiaries to build and transfer knowledge on the use of mobile money platforms. In addition to these sessions they will be requested to produce Factsheets/FAQs on mobile money transfer in local languages to be distributed to beneficiaries. Airtel are also negotiating price reductions on handsets from a provider to be given to those beneficiaries who do not have existing handsets.

Medium-term intervention: within the planned beneficiary figure of 10,000 people (1,000 households), the National Society will support 1,000 households with the following medium-term interventions:

- Support to agricultural production through the provision of agricultural inputs (hybrid seeds of maize, groundnuts and beans and top and base fertilizers for crop season (March 2016) distributed in October/November 2015
- Provision of agricultural training to 100 lead farmers with each lead farmer being responsible for cascading knowledge and skills to 10 follower farmers
- Integrating nutrition training and dissemination of nutrition education in agricultural training

[<click here for the contact details, here for appeal budget and here for the map>](#)

³ UNAIDS 2014

⁴ 2010 Demographic Health Survey

Proposed sectors of intervention



Coordination and partnerships



In Malawi the government leads the overall coordination of disaster response through its Department of Disaster Management Affairs (DoDMA) under the ministry of Local Government. The Malawi Red Cross Society will take part in the coordination meetings held at DoDMA as part of monitoring and sharing information at national level. The Humanitarian Country Team is the coordination platform for partner institutions (UN agencies, WFP, INGO's, NGOs) within its mandate to build common strategies related to humanitarian response and policy issues. The MRCS will engage the Ministry of Health, particularly at field level, to ensure malnutrition needs are monitored and adequately addressed. WFP plays a major role in the formulation of response planning, and support to food distributions. A food security cluster is being established by the Ministry of Agriculture in which the Malawi Red Cross will actively participate.

The IFRC's South Africa Regional Office (SARO) will provide technical support to MRCS during the implementation period, with a focus on the effective coordination of RCRC Movement interventions at the country level, joint coordination of the operation, monitoring, sharing of updates on the progress made, and resolving challenges. IFRC has ensured that all partner National Societies operational in Malawi (Danish, Belgian/Flanders, Finnish, Netherlands, and Swiss Red Cross) have been involved in developing the EPoA, and will continue to do so as it is further refined and developed, dependent on future assessments.



Food security



Nutrition



Livelihoods

Outcome 1: Immediate food needs of 10,000 beneficiaries (2,000 households) are met over a period of six months.

Output 1.1: 2,000 households (10,000 beneficiaries) receive cash distributions in order to purchase food (CHF 43 per month per household).

Activities planned:

- Information for authorities - awareness session in district assemblies
- Targeting process, identification and registration
- Survey verification
- Training on beneficiary identification, registration, rapid assessment and field data collection and analysis
- Coordination with Ministry of Health for development of a referral system for malnourished people
- Establishment of CTP and payment mechanism processes
- Operational training to staff and volunteers on CTP and monitoring on the utilization and adequacy of transfers to meet household food needs
- Validation of beneficiary lists and establishment of an accountability mechanism (including beneficiary communication and feedback systems)
- Cash distributions
- Mobile providers input into training of volunteers in mobile phone registration, provision of free Sim cards, reduced price handset provision to beneficiaries with no existing phone
- Monitoring of malnutrition indicators
- Monitoring and evaluation of the CTP
- Coordination with Ministry of Health for monitoring of referral malnutrition cases
- Training and capacity building in CTP among the staff and volunteers
- Development of CTP preparedness plan for future operations

Outcome 2: Livelihoods of 1,000 households are reinforced to build community resilience in targeted regions.

Output 2.1: Appropriate agricultural inputs (seeds and fertilizers) are distributed to 1,000 farmers (5,000 persons) in rural areas.

Activities planned:

- Assessment to identify most vulnerable households that have capacity to work and have available land for planting
- Conduct specific needs assessment via Ministry of Agriculture to identify most appropriate items to be

- distributed depending on the market availability and period
- Assessment to establish capacity of local traders to provide proposed seeds and fertilizers
- Organize procurement of seeds and fertilizers for 1,000 farmers
- Training of 100 lead farmers in agricultural production and nutrition
- Cascading of agricultural production and nutrition training
- Conduct distribution of seeds and fertilizers by volunteers
- Monitoring and evaluation of the activity

Quality programming / Areas common to all sectors (assessments, monitoring and evaluation)

Outcome 3: The management of the operation is informed by a comprehensive assessment, monitoring and evaluation system.

Output 3.1 Initial needs assessment are updated following consultation with beneficiaries and stakeholders.

Activities planned:

- Management of the implementation team
- Coordination and engagement with key stakeholders, partners, and operational agencies
- Joint monitoring of operations
- Evaluation of the impact of assistance delivered



Programme support services

Human Resources

The MRCS has 7 Regional Disaster Response Team (RDRT)-trained staff, 20 National Disaster Response team (NDRT)-trained staff (and 13 volunteers), 41 Community-based Health and First Aid (CBHFA)-trained staff (and 650 volunteers), and 70 Community-based Disaster Response Team (CBDRT)-trained volunteers. These trained personnel are available to support the implementation of this intervention. To implement this Emergency Appeal the MRCS will employ 5 additional staff (4 district field officers and a PMER assistant). Additionally, existing staff will devote a percentage of their time to the programme delivery, with a focus on CTP training and support for appropriate MRCS headquarters staff and volunteers. This support will be provided by a CTP delegate (for up to one 1 month) who will train and reinforce National Society capacities. In addition to CTP technical support, additional resources will include an IFRC operations manager (based in-country for 6 months), PMER, and finance technical support.

Communications - advocacy and public information

Donors and National Societies will receive information and materials to be used to promote the operation. Relevant information and advocacy materials, including audio-visual products, will be channelled through IFRC and public websites: www.ifrc.org/africa as well as through social media such as the IFRC Twitter account.

Logistics

- The cash distribution will be done in collaboration with the existing MRCS logistics capacity support, with additional logistical capacity provided from the floods emergency programme
- 2 rented light vehicles will be required for transportation of staff and PMER purposes
- All procurements of goods and services will be done in accordance with the MRCS financial procedure manual, the IFRC procurement regulation, and the Malawi public procurement regulatory authority act

Reporting, monitoring and evaluation

The MRCS will build on its experience and existing tools in planning, monitoring, evaluation and reporting. Close monitoring is required to assess the impact of response actions, particularly cash transfers, with at least three monitoring visits planned as well as a mid-term beneficiary satisfaction survey. A lessons-learned workshop and a final evaluation will be carried out to review best practices, and to inform recommendations for future interventions.

Administration and Finance

The IFRC's country representation will facilitate cash transfers from the Emergency Appeal and ensure effective administrative and financial support to be the operation.

Budget

See attached IFRC Secretariat budget for details.

Elhadj Amadou As Sy
Under Secretary General (a.i.)
Programme Services Division

Elhadj Amadou As Sy
Secretary General

Reference documents



Click here for:

- [Emergency Plan of Action](#) (EPoA)

Contact Information**For further information specifically related to this operation please contact:**

- **In Malawi:** Hastings Kandaya, Director of Programmes, Malawi Red Cross Society. Phone: +265 991015441; email: hkandaya@redcross.mw
- **IFRC Regional Representation:** Michael Charles, Programs Coordinator for Southern Africa; mobile: +278-34132988; email: michael.charles@ifrc.org
- **IFRC Africa Zone:** Lucia Lasso, Disaster Management Unit; Nairobi; phone: +254 731-067469; email: lucia.lasso@ifrc.org
- **IFRC Geneva:** Christine South, Operations Quality Assurance Senior Officer; phone: +41.22.730.45 29; email: christine.south@ifrc.org
- **IFRC Zone Logistics Unit (ZLU):** Rishi Ramrakha, Head of zone logistics unit; phone: +254 733 888 022/ Fax +254 20 271 2777; email: rishi.ramrakha@ifrc.org

For Resource Mobilization and Pledges:

- **In IFRC Africa Zone:** Fidelis Kangethe, Partnerships and Resource Mobilization Coordinator; Addis Ababa; phone: +251 930 03 4013; email: fidelis.kangethe@ifrc.org

Please send all pledges for funding to zonerm.africa@ifrc.org**For Performance and Accountability (planning, monitoring, evaluation and reporting): IFRC Zone:**Robert Ondrusek, PMER Coordinator Africa, phone: +254 731 067277; email: robert.ondrusek@ifrc.org**How we work**

All IFRC assistance seeks to adhere to the **Code of Conduct** for the International Red Cross and Red Crescent Movement and Non-Governmental Organizations (NGOs) in Disaster Relief and the **Humanitarian Charter and Minimum Standards in Humanitarian Response (Sphere)** in delivering assistance to the most vulnerable. The IFRC's vision is to inspire, **encourage, facilitate and promote at all times all forms of humanitarian activities** by National Societies, with a view to **preventing and alleviating human suffering**, and thereby contributing to the maintenance and promotion of human dignity and peace in the world.

The IFRC's work is guided by Strategy 2020 which puts forward three strategic aims:



Save lives,
protect livelihoods,
and strengthen recovery
from disaster and crises.



Enable **healthy**
and **safe** living.



Promote **social inclusion**
and a culture of
non-violence and peace.

EMERGENCY APPEAL OPERATION

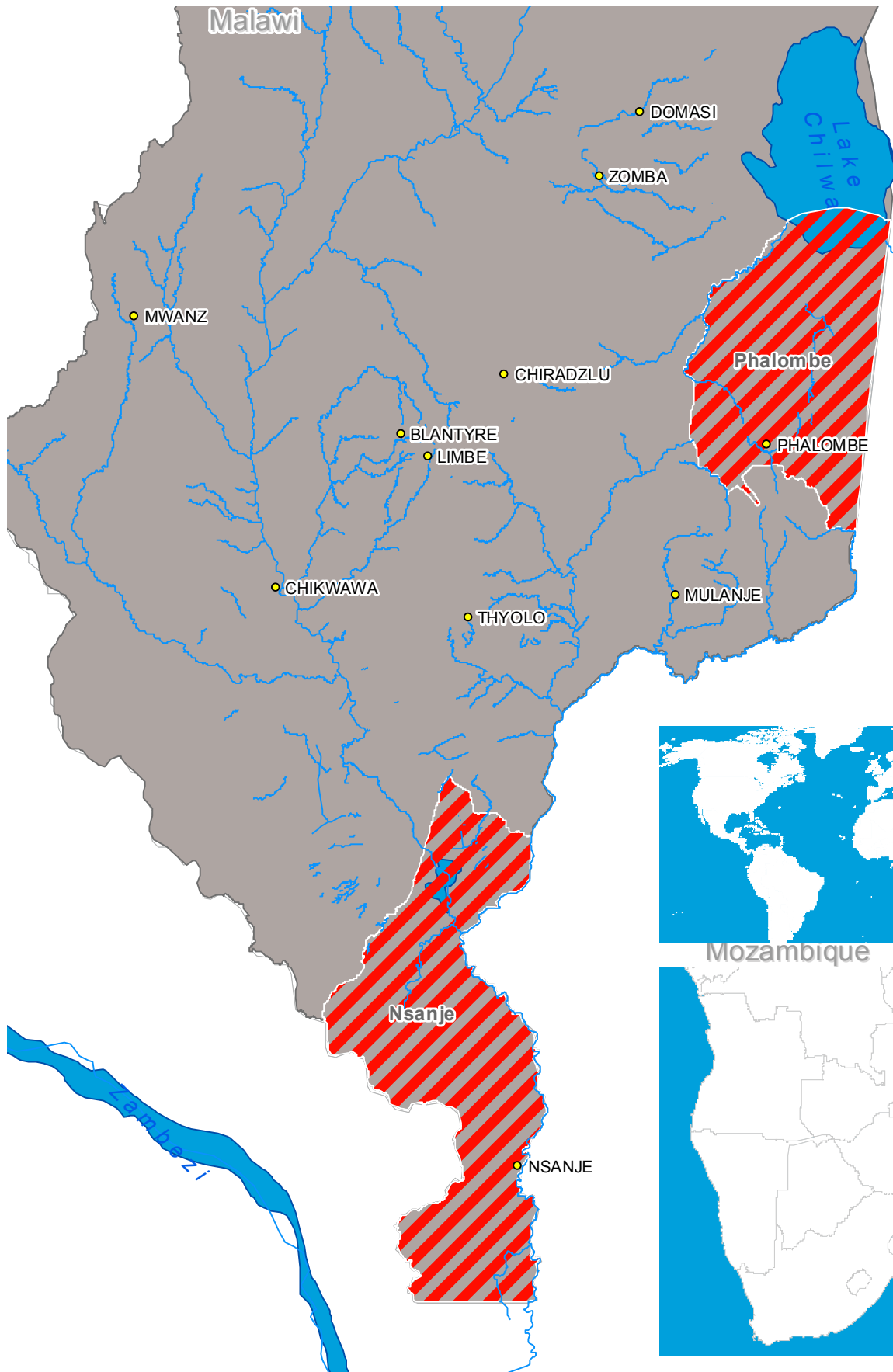
17/09/2015

MDRMW012 Malawi Food Insecurity

Budget Group	Multilateral Response	Inter-Agency Shelter Coord.	Bilateral Response	Budget CHF
Shelter - Relief	0			0
Shelter - Transitional	0			0
Construction - Housing	0			0
Construction - Facilities	0			0
Construction - Materials	0			0
Clothing & Textiles	0			0
Food	0			0
Seeds & Plants	40,000			40,000
Water, Sanitation & Hygiene	0			0
Medical & First Aid	0			0
Teaching Materials	0			0
Utensils & Tools	25,000			25,000
Other Supplies & Services	0			0
Emergency Response Units	0			0
Cash Disbursements	442,900			442,900
Total RELIEF ITEMS, CONSTRUCTION AND SUPPLIES	507,900	0	0	507,900
Land & Buildings	0			0
Vehicles Purchase	0			0
Computer & Telecom Equipment	10,000			10,000
Office/Household Furniture & Equipment	0			0
Medical Equipment	0			0
Other Machinery & Equipment	0			0
Total LAND, VEHICLES AND EQUIPMENT	10,000	0	0	10,000
Storage, Warehousing	0			0
Distribution & Monitoring	0			0
Transport & Vehicle Costs	15,400			15,400
Logistics Services	0			0
Total LOGISTICS, TRANSPORT AND STORAGE	15,400	0	0	15,400
International Staff	27,000			27,000
National Staff	0			0
National Society Staff	45,060			45,060
Volunteers	4,600			4,600
Total PERSONNEL	76,660	0	0	76,660
Consultants	0			0
Professional Fees	6,500			6,500
Total CONSULTANTS & PROFESSIONAL FEES	6,500	0	0	6,500
Workshops & Training	22,400			22,400
Total WORKSHOP & TRAINING	22,400	0	0	22,400
Travel	8,000			8,000
Information & Public Relations	0			0
Office Costs	12,000			12,000
Communications	0			0
Financial Charges	5,000			5,000
Other General Expenses	36,069			36,069
Shared Support Services	3,609			3,609
Total GENERAL EXPENDITURES	64,678	0	0	64,678
Programme and Supplementary Services Recovery	45,730	0	0	45,730
Total INDIRECT COSTS	45,730	0	0	45,730
TOTAL BUDGET	749,268	0	0	749,268
Available Resources				
Multilateral Contributions				0
Bilateral Contributions				0
TOTAL AVAILABLE RESOURCES	0	0	0	0
NET EMERGENCY APPEAL NEEDS	749,268	0	0	749,268



Malawi: Food security



The maps used do not imply the expression of any opinion on the part of the International Federation of Red Cross and Red Crescent Societies or National Societies concerning the legal status of a territory or of its authorities. Map data sources: ESRI, DEVINFO, International Federation, MDRMW012.mxd
Map created by DCM/GVA

 Targeted districts

0 50 km

